



# Roosevelt Middle School



## Master Schedule Update and Review

BLOCK

BLOCK

BLOCK



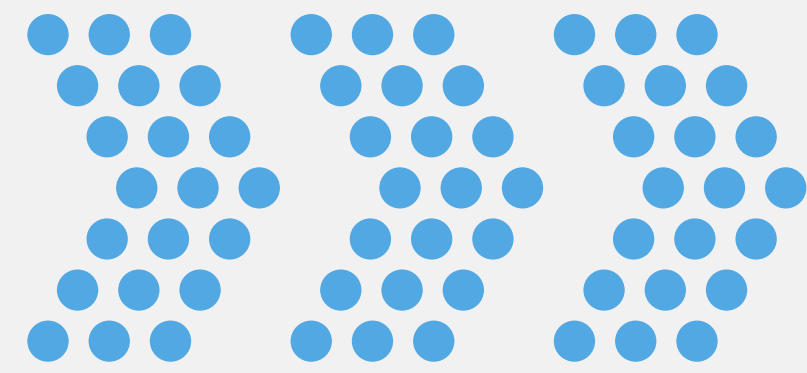
# What is a Block and an 8 period Day?

**8  
P  
e  
r  
i  
o  
d**

	Period	Minutes
	1	41
8:30 - 9:11	2	41
9:14 - 9:55	3	41
9:58 - 10:39	4	41
10:42 - 11:23		
LUNCH		
	5	41
12:21 - 1:02	6	41
1:05 - 1:46	7	41
1:49 - 2:30	8	41
2:33 - 3:14	Homeroom	
3:17 - 3:20		

**B  
l  
o  
c  
k**

	Day 1	Day 2	Minutes
	1	5	82
8:30 - 9:52	2	6	
9:57 - 11:19	LUNCH		
	3	7	82
12:18 - 1:40	4	8	82
1:45 - 3:07	Homeroom		
3:12 - 3:15			



# Background of the Block

the block  
schedule?





**Covid  
Mitigation  
Strategy**

**to**

**Teacher  
Supported  
Model**

# What is the value of an extended instructional period/block schedule?



## Added time allows for:

Cooperative Groupings, Stations, Seminars, Presentations, Debates, Deeper Discussions, Socratic Methods, Movement, Time for more teacher-student individualization, Tier 2 interventions, Independent practice with teacher oversight - Project based curriculum - Hands On activities - Fewer subjects each day (less homework)

# Good Fit for the Existing Curriculum

- **IQWST (Science) daily lessons designed for 71 minutes**
- **Math daily lessons designed for 60-75 minutes**
- **English Language Arts daily lessons designed for 90 minutes**
- **Social studies instruction is shifting to inquiry based instruction designed for longer blocks of instructional time**

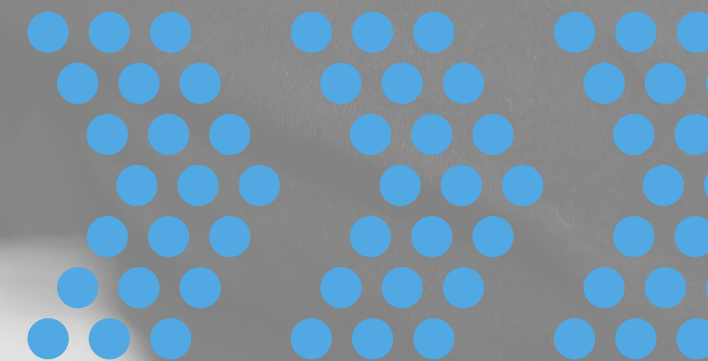
Materials we adopt are supported by best practices research related to how students learn and instructional delivery. We often partner with educational think tanks or universities to make instructional decisions.

# What are the challenges of a block schedule?

- Teachers don't see the students everyday
- Requires changes in lesson design
- P.E. is every other day
- Absenteeism has different implications

# Implications of an extended instructional period?

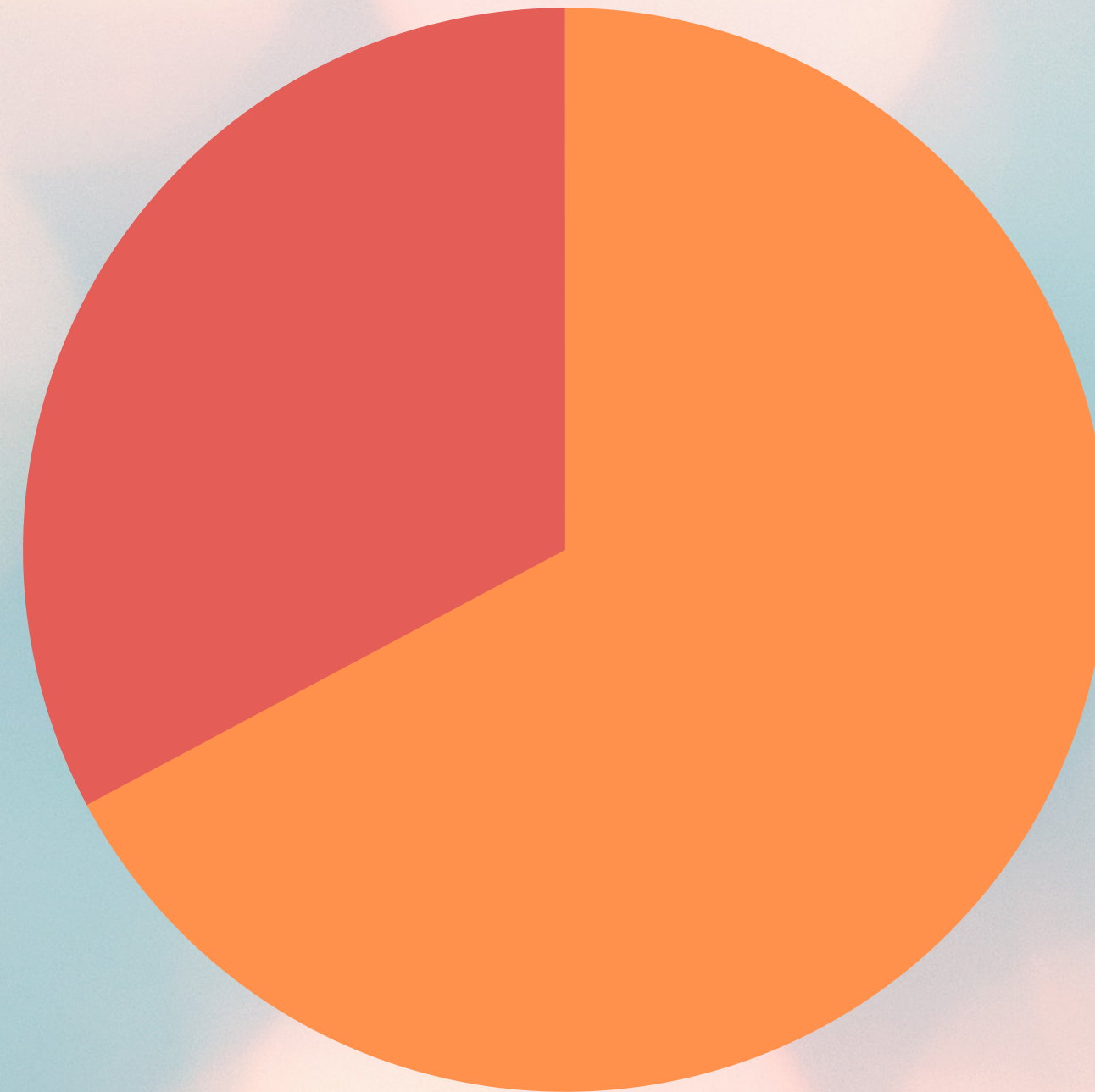
**A Paradigm Shift for Teacher Planning  
Not Realized to it's Fullest Potential Yet**





**64  
Teacher  
Responses**

**8 Period Schedule  
32.8%**

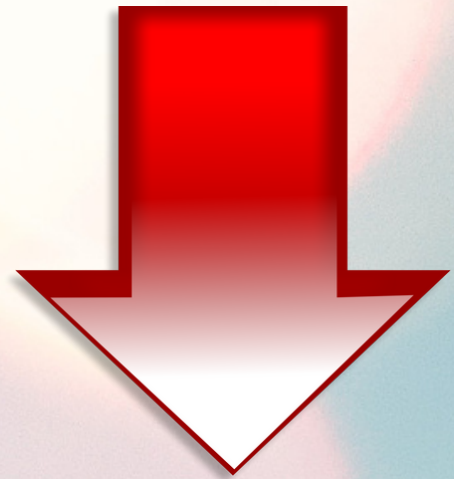


**Block Schedule  
67.2%**

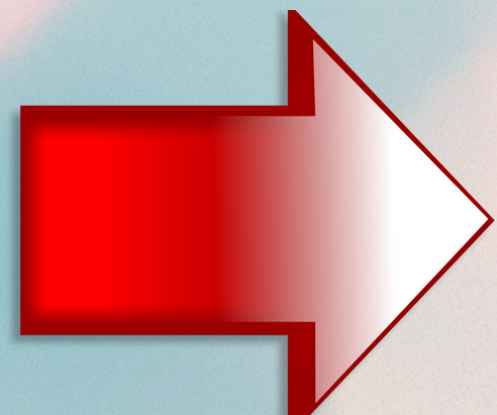
# **Teacher Survey, March 2022**

# Untapped Potential & Possibilities of the Block model

**Student Interest**



**Student Engagement**



**Student Learning**

# Moving Forward...

**All Staff Training**

**Department Specific**

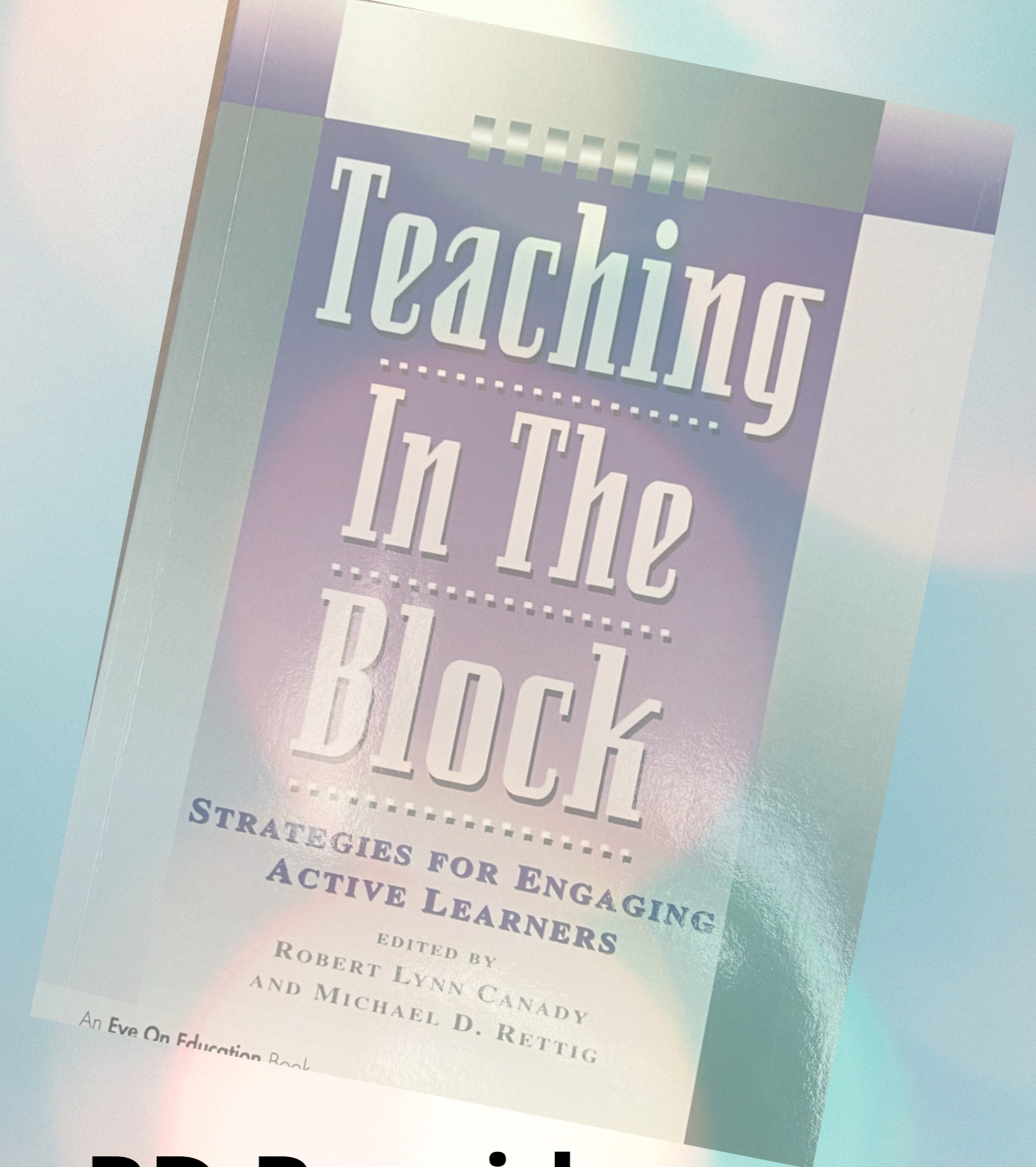
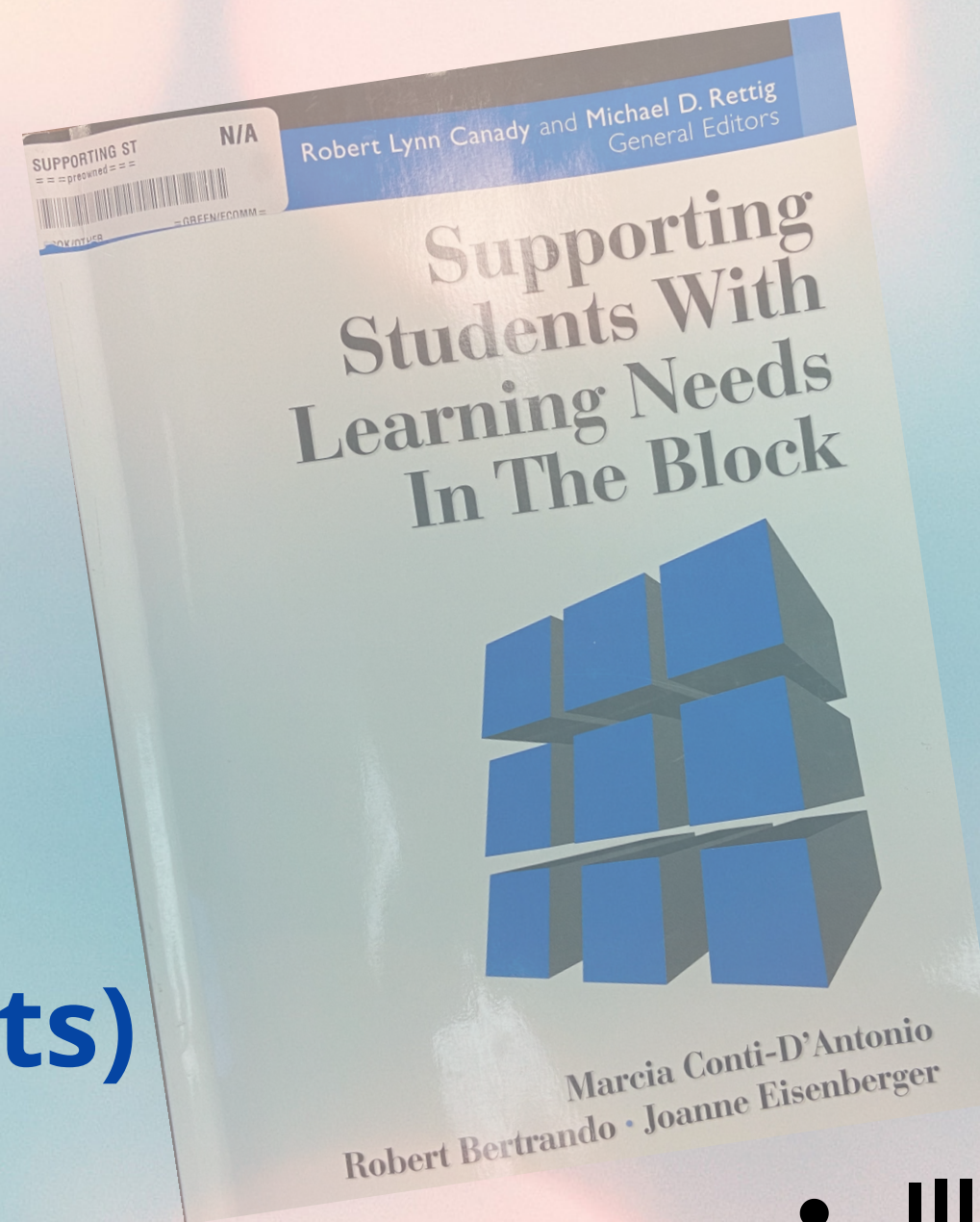
**Individual Workshops**

**Staff Sharing**

**(Team and Departments)**

**Student Feedback**

**Advisory/SEL**



## **PD Providers:**

- **Illinois Civics Hub - Social Studies**
- **BSCS Science Learning - Science**
- **MCMJ/Nancy Mueller - Math**
- **Meghan Hargrave, Literacy Consultant - ELA**

*Comments*  
&  
*Questions*