



FACILITIES MANAGEMENT

Independent School District No. 709

Located at: 101 East 3rd Street

Mailing Address: 215 North 1st Avenue East
Duluth, Minnesota 55802

Facilities Management (218) 336-8907

Safety & Health (218) 336-8700 ext. 3240

Maintenance (218) 336-8906

Operations (218) 336-8905

Fax (218) 336-8909

MEMORANDUM

To: Superintendent Dixon
School Board

From: Kerry M. Leider
Property and Risk Manager

A handwritten signature in black ink, appearing to read "Kerry M. Leider", with a long horizontal flourish extending to the right.

Date: February 8, 2010

Re: Request for Conveyance of Tax Forfeited Land – West Middle School Site

In July 2008, the Duluth School Board, by Resolution #B-7-08-2558, directed action be initiated to secure the purchase or other terms related to real property for the new Western Middle School to be located at the Wheeler North site.

Resolution B-2-10-2737 authorizes the application to the County for the conveyance of parcels legally described on the attached Exhibit A.

Attachments

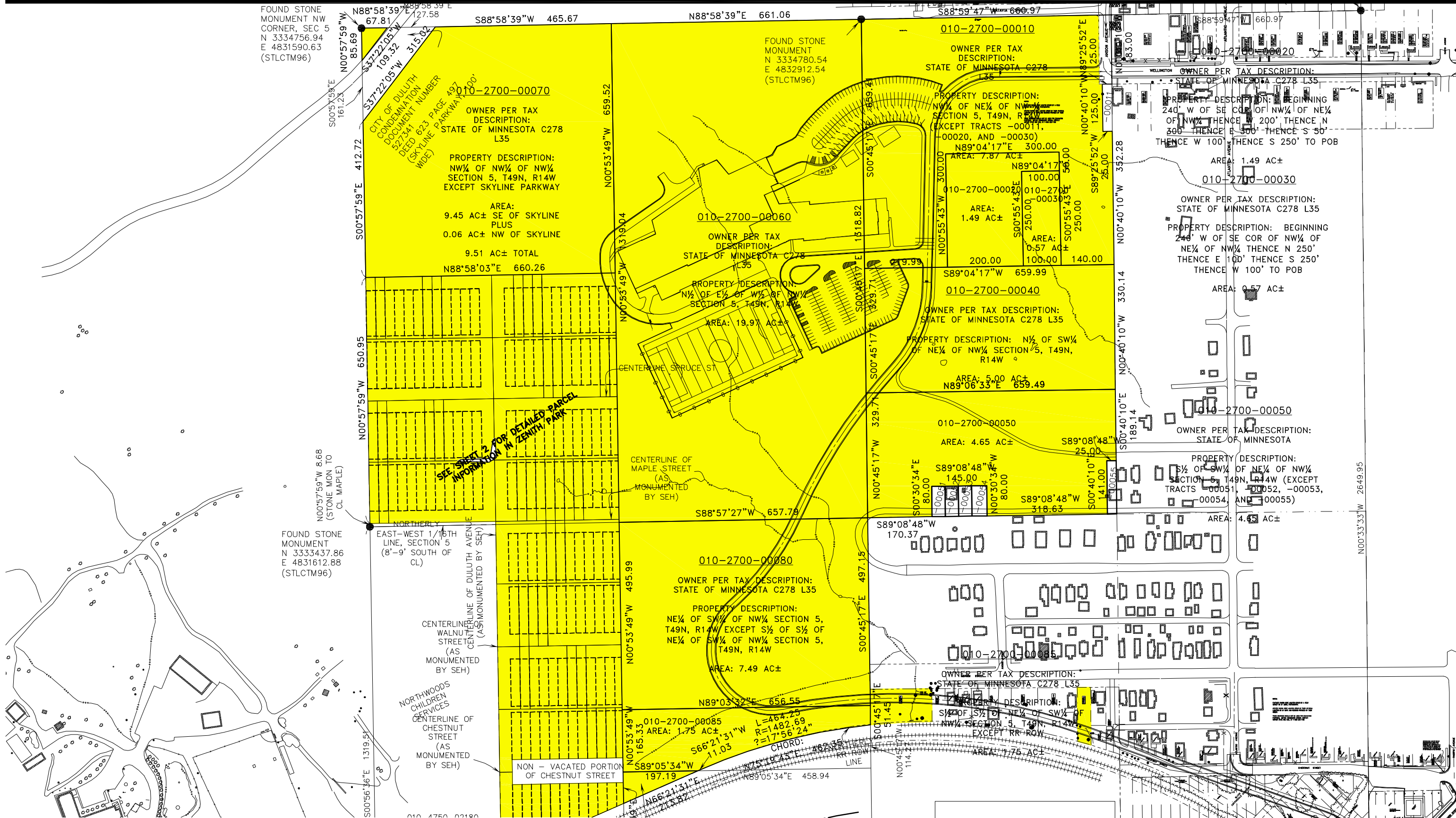
Exhibit A

St. Louis County Parcel Identification Number List

February 23, 2010

PARCEL IDENTIFICATION NUMBER	PROPERTY DISCIPTION
010-2700-00010	NW¼ OF NE¼ OF NW ¼ SECTION 5, T49N, R14W (EXCEPT TRACTS -00011, -00020, AND -00030)
010-2700-00020	BEGINNING 240' W OF SE COR OF NW¼ OF NE¼ OF NW¼ THENCE W 200' THENCE N 300' THENCE E 300' THENCE S 50' THENCE W 100' THENCE S 250' TO POB
010-2700-00030	BEGINNING 240' W OF SE COR OF NW¼ OF NE¼ OF NW¼ THENCE N 250' THENCE E 100' THENCE S 250' THENCE W 100' TO POB
010-2700-00040	N½ OF SW¼ OF NE¼ OF NW¼ SECTION 5, T49N, R14W
010-2700-00050 (Part of)	NW corner to be split off parent parcel
010-2700-00060	N½ OF E½ OF W½ OF NW¼ SECTION 5, T49N, R14W
010-2700-00080	NE¼ OF SW¼ OF NW¼ SECTION 5, T49N, R14W EXCEPT S½ OF S½ OF NE¼ OF SW¼ OF NW¼ SECTION 5, T49N, R14W
010-2700-00085	S½ OF S½ OF NE¼ OF SW¼ OF NW¼ SECTION 5, T49N, R14W EXCEPT RR ROW
010-0350-00530	Lots 1-5, Block 5, Bryants Addition Third Division
010-0350-00690	Lot 17, Block 5, Bryants Addition Third Division
010-2700-00050 (Part of)	S½ OF SW¼ OF NE¼ OF NW¼ SECTION 5, T49N, R14W (EXCEPT TRACTS -00051, -00052, -00053, -00054, AND -00055) and except NW Corner split from parent parcel
010-2700-00070	NW¼ OF NW¼ OF NW¼ SECTION 5, T49N, R14W EXCEPT SKYLINE PARKWAY
010-2700-00090	W½ OF SE¼ OF SW¼ OF NW¼ SECTION 5, T49N, R14W NORTH OF RR ROW
010-4750-00010	Lots 1-4, Block 1, Zenith Park Addition
010-4750-00050	Lot 5, Block 1, Zenith Park Addition
010-4750-00060	Lot 6, Block 1, Zenith Park Addition
010-4750-00070	Lots 7-10, Block 1, Zenith Park Addition
010-4750-00110	Lot 11, Block 1, Zenith Park Addition
010-4750-00120	Lot 12, Block 1, Zenith Park Addition
010-4750-00130	Lot 1, Block 2, Zenith Park Addition
010-4750-00140	Lot 2, Block 2, Zenith Park Addition
010-4750-00150	Lot 3, Block 2, Zenith Park Addition
010-4750-00160	Lot 4, Block 2, Zenith Park Addition
010-4750-00170	Lots 5-12, Block 2, Zenith Park Addition
010-4750-00250	Lots 1-4, Block 3, Zenith Park Addition
010-4750-00290	Lot 5, Block 3, Zenith Park Addition
010-4750-00300	Lot 6, Block 3, Zenith Park Addition
010-4750-00310	Lots 7-10, Block 3, Zenith Park Addition
010-4750-00350	Lot 11, Block 3, Zenith Park Addition
010-4750-00360	Lot 12, Block 3, Zenith Park Addition
010-4750-00370	Lots 1-12, Block 4, Zenith Park Addition
010-4750-00490	Lots 1-4, Block 5, Zenith Park Addition
010-4750-00530	Lot 5, Block 5, Zenith Park Addition
010-4750-00540	Lot 6, Block 5, Zenith Park Addition
010-4750-00550	Lots 7-10, Block 5, Zenith Park Addition
010-4750-00590	Lot 11, Block 5, Zenith Park Addition
010-4750-00600	Lot 12, Block 5, Zenith Park Addition
010-4750-00610	Lots 1-12, Block 6, Zenith Park Addition
010-4750-00730	Lot 1, Block 7, Zenith Park Addition
010-4750-00740	Lot 2, Block 7, Zenith Park Addition
010-4750-00750	Lot 3, Block 7, Zenith Park Addition
010-4750-00760	Lot 4, Block 7, Zenith Park Addition
010-4750-00770	Lot 5, Block 7, Zenith Park Addition
010-4750-00780	Lot 6, Block 7, Zenith Park Addition
010-4750-00790	Lot 7, Block 7, Zenith Park Addition

PARCEL IDENTIFICATION NUMBER	PROPERTY DISCRPTION
010-4750-00800	Lot 8, Block 7, Zenith Park Addition
010-4750-00810	Lots 9-12, Block 7, Zenith Park Addition
010-4750-00850	Lots 1-10, Block 8, Zenith Park Addition
010-4750-00950	Lot 11, Block 8, Zenith Park Addition
010-4750-00960	Lot 12, Block 8, Zenith Park Addition
010-4750-01090	Lots 1-4, Block 10, Zenith Park Addition
010-4750-01130	Lot 5, Block 10, Zenith Park Addition
010-4750-01140	Lot 6, Block 10, Zenith Park Addition
010-4750-01150	Lots 7-12, Block 10, Zenith Park Addition
010-4750-01210	Lot 1, Block 11, Zenith Park Addition
010-4750-01220	Lot 2, Block 11, Zenith Park Addition
010-4750-01230	Lot 3, Block 11, Zenith Park Addition
010-4750-01240	Lot 4, Block 11, Zenith Park Addition
010-4750-01250	Lots 5-12, Block 11, Zenith Park Addition
010-4750-01570	Lot 1, Block 14, Zenith Park Addition
010-4750-01580	Lot 2, Block 14, Zenith Park Addition
010-4750-01590	Lots 3-6, Block 14, Zenith Park Addition
010-4750-01630	Lot 7, Block 14, Zenith Park Addition
010-4750-01640	Lot 8, Block 14, Zenith Park Addition
010-4750-01650	Lots 9-12, Block 14, Zenith Park Addition
010-4750-01690	Lots 1-8, Block 15, Zenith Park Addition
010-4750-01770	Lot 9, Block 15, Zenith Park Addition
010-4750-01780	Lot 10, Block 15, Zenith Park Addition
010-4750-01790	Lot 11, Block 15, Zenith Park Addition
010-4750-01800	Lot 12, Block 15, Zenith Park Addition
010-4750-02050	Lots 1-3, Block 18, Zenith Park Addition
010-4750-02080	Lot 4, Block 18, Zenith Park Addition
010-4750-02090	Lots 5-12, Block 18, Zenith Park Addition



WESTERN MIDDLE SCHOOL

DULUTH, MN

010-2700-00090
 PER TAX DESCRIPTION:
 MINNESOTA C278 L35
 PROPERTY DESCRIPTION:
 SE 1/4 OF SW 1/4 OF NW 1/4
 T49N, R14W, NORTH OF

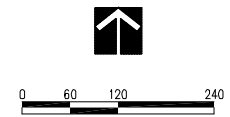


EXHIBIT B
NEW WESTERN MIDDLE
SCHOOL - NORTH WHEELER

RESOLUTION

Authorizing the Application for Conveyance of Tax Forfeited Land –
New West Middle School at the North Wheeler Site

WHEREAS, Minnesota Statute 123B.51 SCHOOLHOUSES AND SITES; USES FOR SCHOOL AND NONSCHOOL PURPOSES; CLOSINGS provides that the board may locate and acquire necessary sites of schoolhouses or enlargements, or additions to existing schoolhouse sites by lease, purchase or condemnation under the power of eminent domain; and

WHEREAS, School Board Resolution B-6-07-2452 directs, “the identification and negotiation of land to be acquired as identified in the RED Option. Options to purchase land may be secured where necessary to protect the district’s interests”. The RED Option calls for a New Western Middle School on a site to be determined; and

WHEREAS, the School Board by approving Resolution B-7-08-2558, selected the North Wheeler Site for the new Western Middle School; and

WHEREAS, there exist currently several parcels of Tax Forfeited Land that are of sufficient acreage in total to meet school site size guidelines of the State of Minnesota Department of Education, said parcels legally described on Exhibit A as attached hereto.

NOW, THEREFORE, BE IT RESOLVED AS FOLLOWS:

The School Board hereby authorizes the Administration to make Application for Conveyance of this Tax Forfeited Land and hereby authorizes the School Board Chair to sign the applications and execute all other documents required for completing and closing these transactions.