



| JAN. 12, 2025

# HELEN EDWARDS ECC

SCHEMATIC DESIGN  
PRESENTATION



## AGENDA

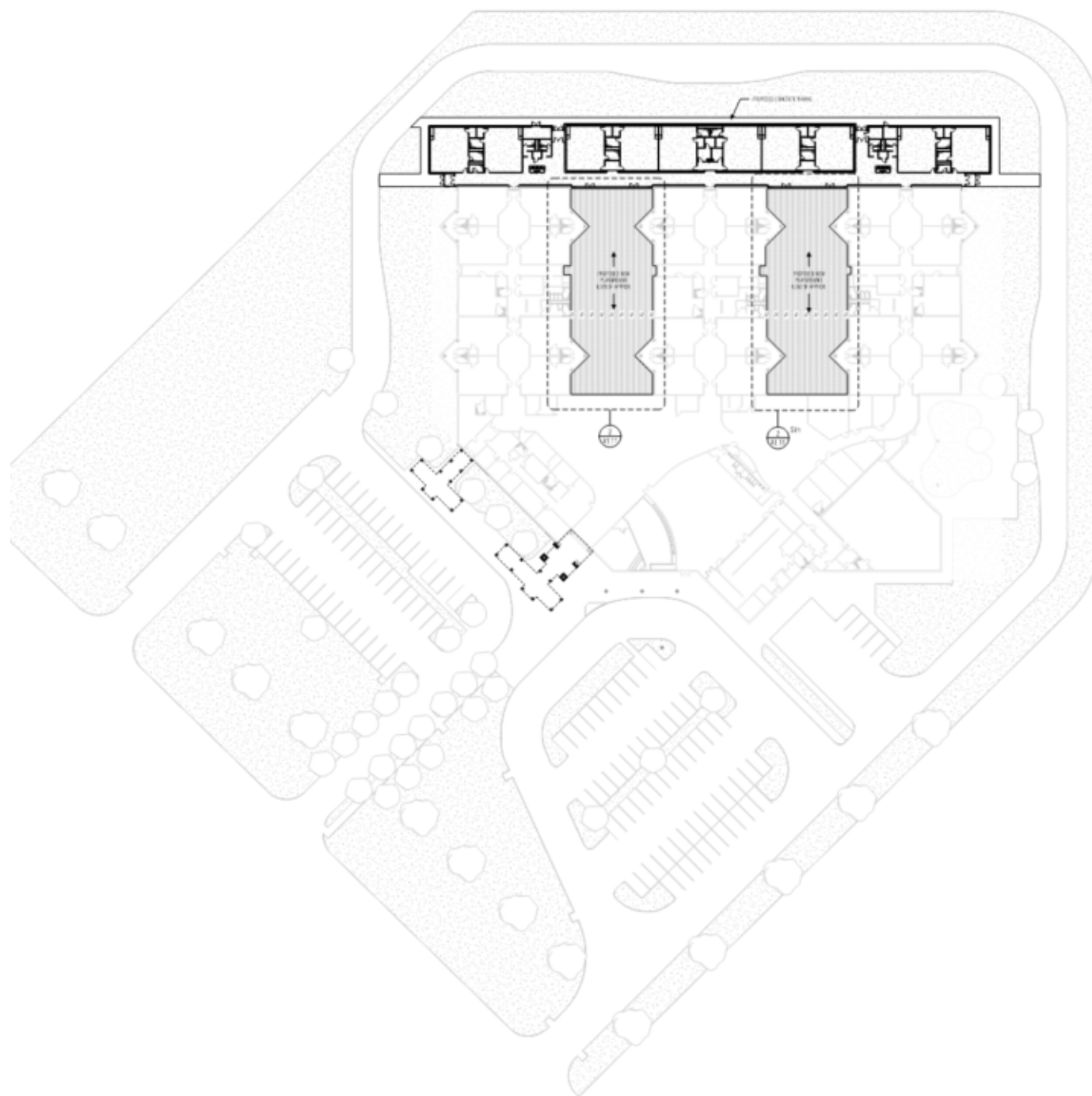
- Site Circulation
- Exterior Design Concepts
- Interior Design Concepts
- Courtyard
- Schedule

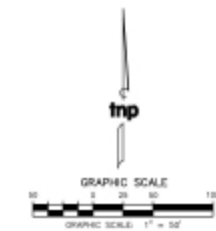


# SITE CIRCULATION



# SITE PLAN





LEGEND	
	PROPOSED CONCRETE
	PROPOSED CONCRETE PAVING
PARKING	
TOTAL PARKING	107 SPACES

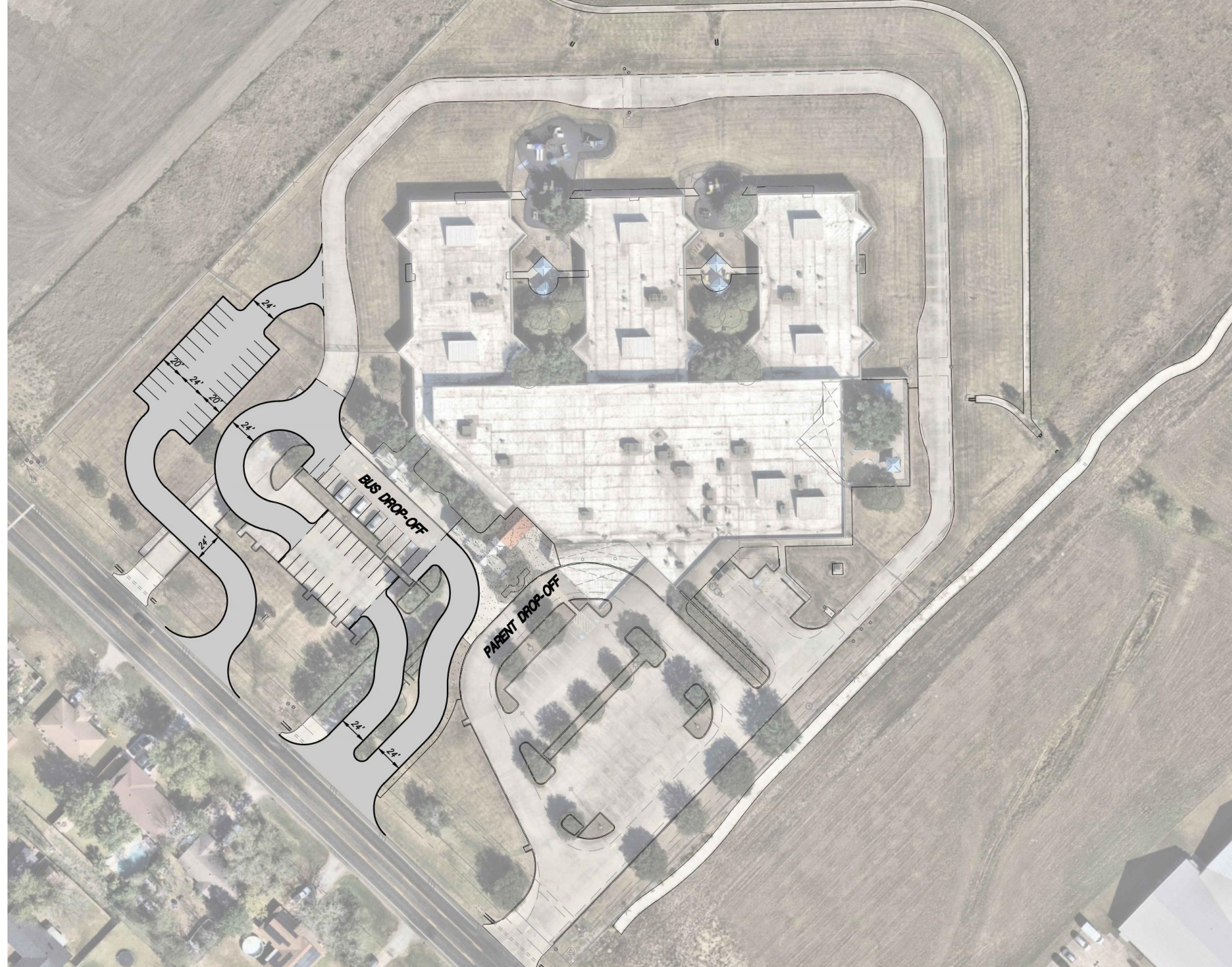
**SITE LAYOUT  
FOR KAUFMAN ISD  
HELEN EDWARDS EARLY CHILDHOOD  
CENTER IMPROVEMENTS**  
CITY OF KAUFMAN, KAUFMAN COUNTY, TEXAS  
JANUARY 05, 2026



**teague nall & perkins**  
825 Waters Creek Boulevard., Suite M300  
Allen, Texas 75013  
214.461.9867 ph 214.461.9864 fx  
TBPB Registration No. F-230  
www.tnplnc.com

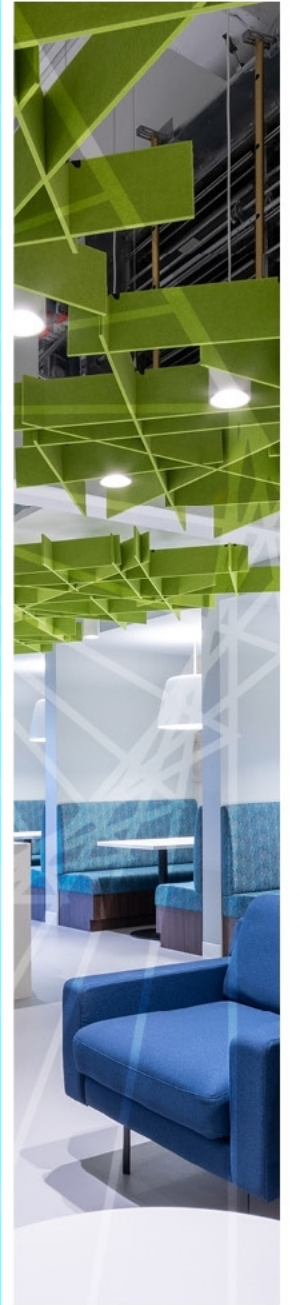


## SITE PLAN





# Exterior Design Concepts



## EXISTING EXTERIOR CONDITIONS



- The front entry canopy is made of yellow-painted concrete columns wrapped in brick.
  - Kalwall and blue metal panels are showing signs of age
- Yellow checkerboard pattern encircles the entire building
- Additional columns are painted yellow + accent color
- All existing walls above level one (14') are white metal panel



# ENTRY CANOPY OPTIONS





## ENTRY CANOPIES OPTION A





## ENTRY CANOPIES OPTION A





## ENTRY CANOPIES OPTION A





## ENTRY CANOPIES OPTION B





## ENTRY CANOPIES OPTION B





## ENTRY CANOPIES OPTION B – Logo Placement 1





## ENTRY CANOPIES OPTION B – Logo Placement 2





## ENTRY CANOPIES OPTION B – Logo Placement 3





# | CLASSROOM ADDITION OPTIONS





## CLASSROOM ADDITION OPTION – A



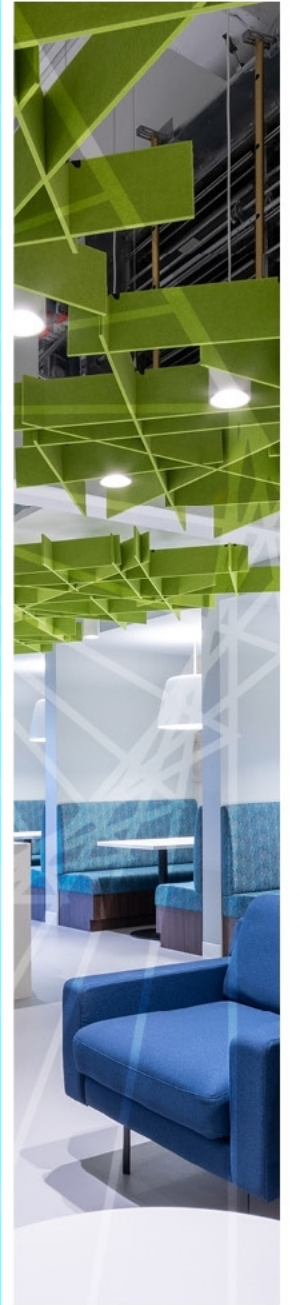


## CLASSROOM ADDITION OPTION – B





# Interior Design Concepts





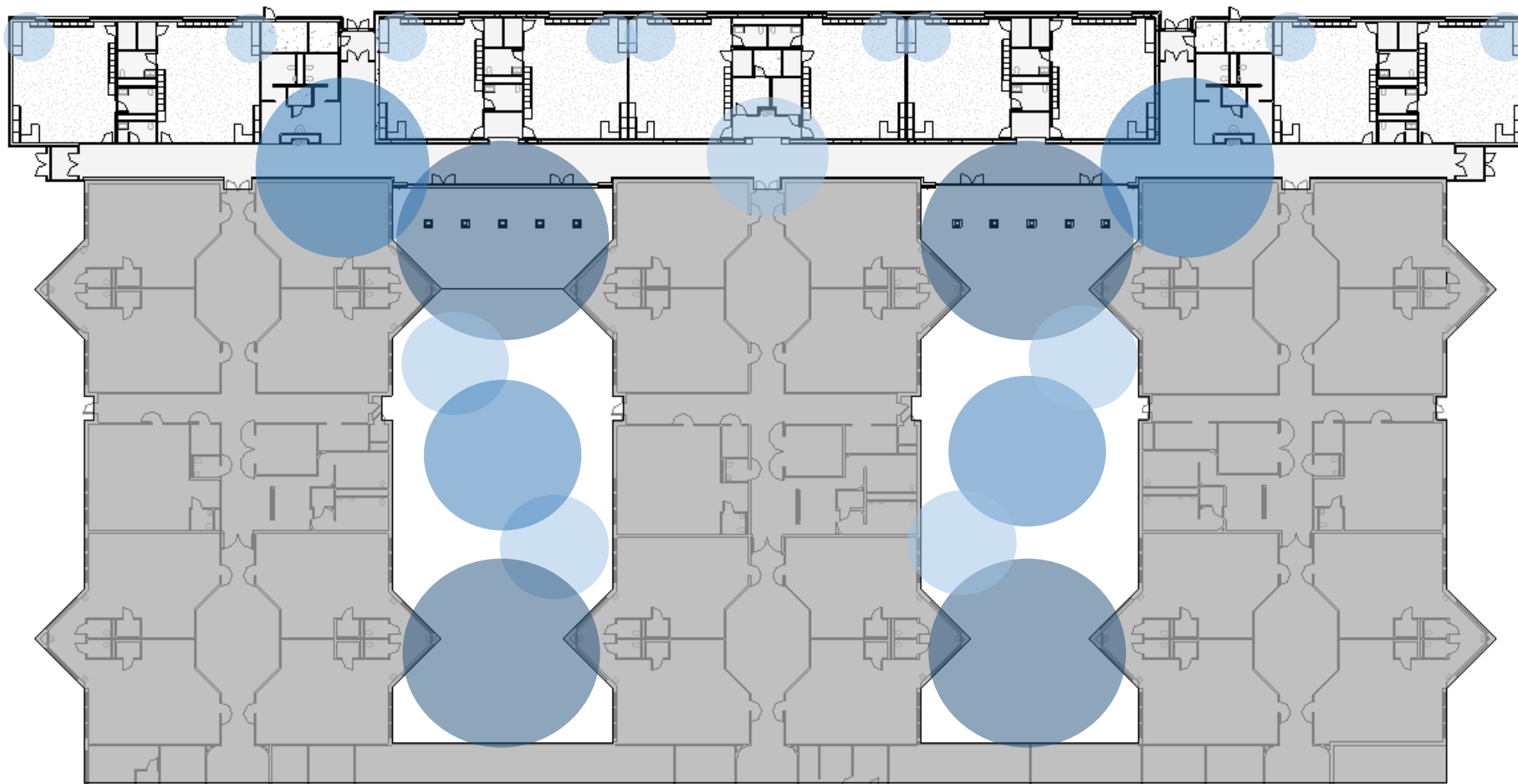
## IMPORTANCE OF COLOR



- The existing school is defined by bold, recognizable colors throughout
- The addition builds on this identity for a seamless transition between spaces
- A new accent color is derived from the existing palette to evolve the design
- Materials and finishes are selected for consistency and durability
- The concept balances familiarity with a fresh, cohesive update

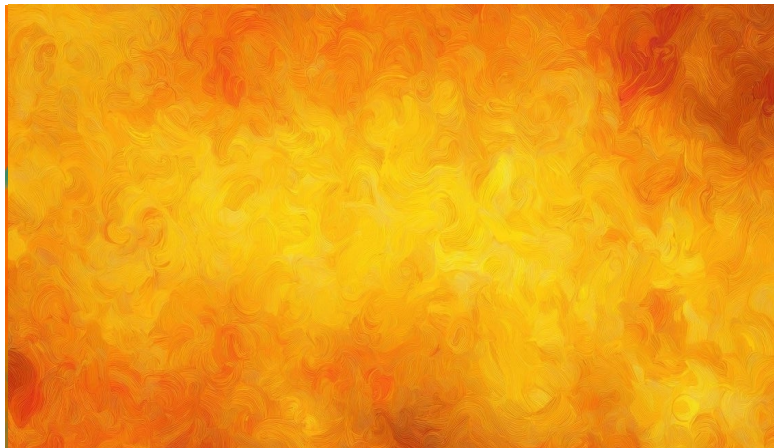
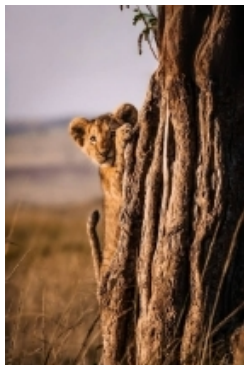
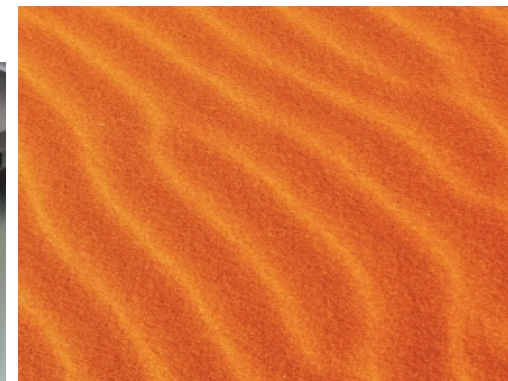
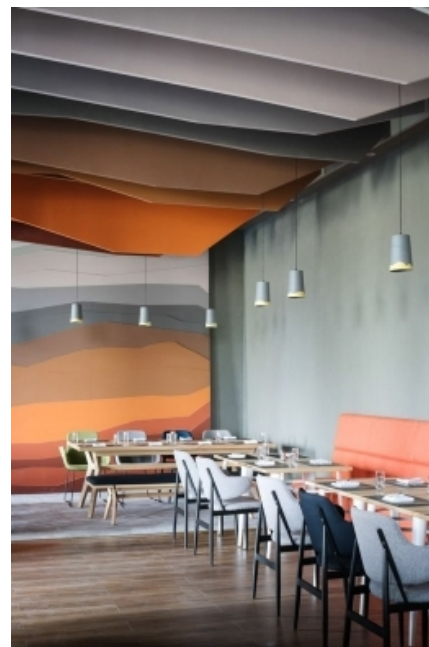
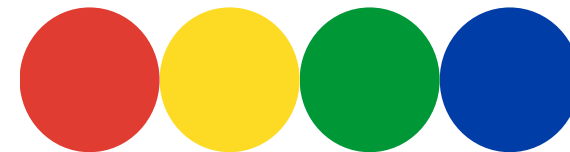


## CONCEPT PLAN



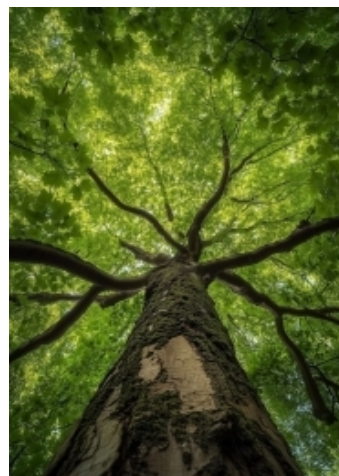
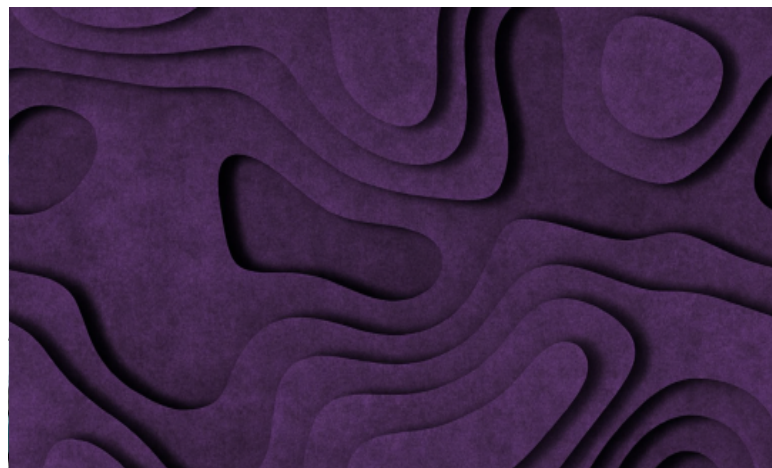
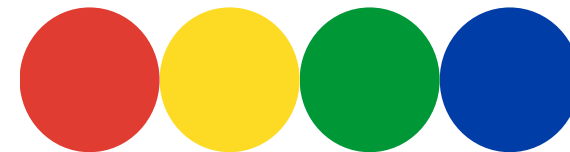


# DESIGN CONCEPT | LIONS



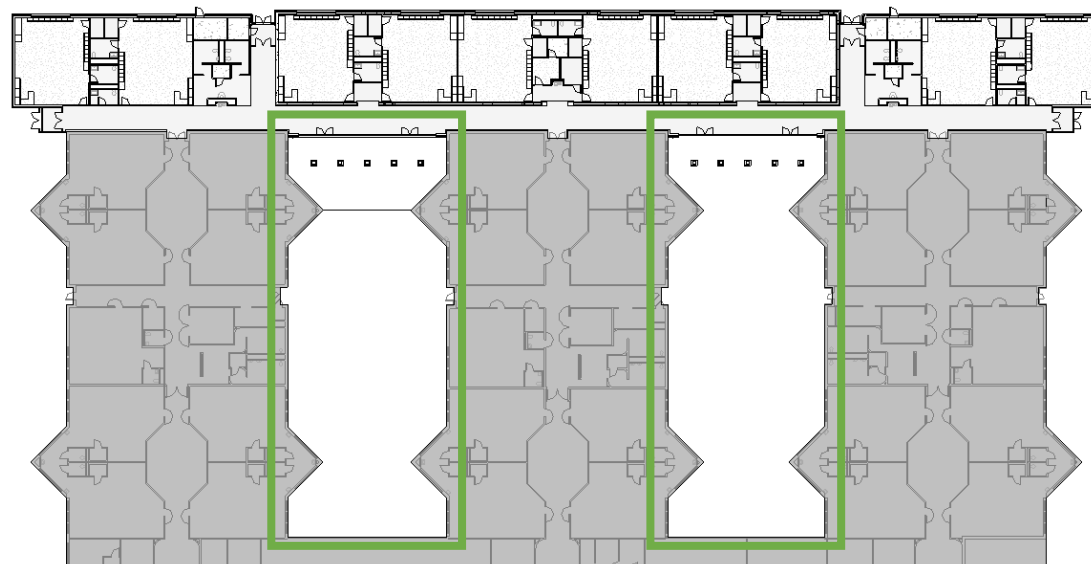


## DESIGN CONCEPT | HUMMINGBIRD





# PLAYSCAPES





# Schedule

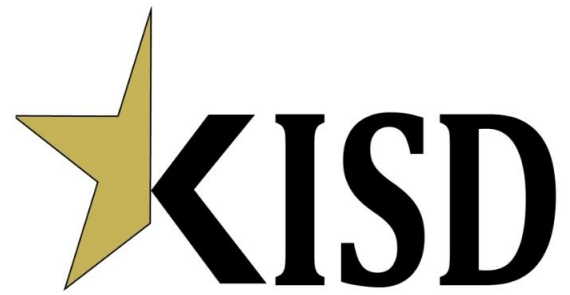




## SCHEDULE

DESIGN & PRECONSTRUCTION	SD DOCUMENTS ISSUED	12/4/2025
	SD ESTIMATE	12/18/2025
	DD / 50% CD's ISSUED	1/29/2026
	DD / 50% CD ESTIMATE	2/13/2026
	TENTATIVE - 75% CD's ISSUED	2/26/2026
	TENTATIVE - 75% CD ESTIMATE	3/16/2026
	100% CD's ISSUED	3/30/2026
	PERMIT SUBMISSION	3/30/2026
GMP	GMP BID DAY	4/20/2026
	GMP PRESENTATION TO KISD & VLK	5/4/2026
	<b>BOARD APPROVAL</b>	<b>5/11/2026</b>
CONSTRUCTION	NOTICE TO PROCEED	5/12/2026
	PERMIT APPROVAL	5/12/2026
	SUBSTANTIAL COMPLETION	7/14/2027
	FINAL COMPLETION	8/13/2027





THANK  
YOU!

