

NOME-BELTZ  
MIDDLE/HIGH SCHOOL  
#nanookstrong  
2025-2026  
**STUDENT HANDBOOK**



***Nome-Beltz Fight Song***

*On Nome-Beltz High!*

*On Nome-Beltz High!*

*Fight, fight, all the time*

*Pass the ball around the players*

*Baskets all the time*

*Rah, Rah, Rah!*

*On Nome-Beltz High!*

*On Nome-Beltz High!*

*Fight on for your fame*

*Fight Nanooks*

*Fight, fight, fight*

*We'll win this game -Rah!*

<b>NOME PUBLIC SCHOOLS VISION AND MISSION STATEMENT</b>	<b>3</b>
<b>POSITIVE BEHAVIOR INTERVENTIONS &amp; SUPPORTS (PBIS)</b>	<b>3</b>
What is PBIS?	3
Nome Public Schools Behavior Purpose Statement	3
School-Wide Behavior Expectations	3
NBMHS Behavior Expectations Matrices	4
<b>PROMOTION AND GRADUATION REQUIREMENTS</b>	<b>4</b>
<b>WITHDRAWAL OR CHANGE OF CLASSES</b>	<b>5</b>
<b>GRADE REPORTING</b>	<b>5</b>
NBMHS grading scale	5
High School Finals	5
Progress Reports & Report Cards	6
<b>SCHEDULE INFORMATION</b>	<b>6</b>
Teacher Assistants	6
Free Periods	6
ANSEP Acceleration Academy	6
Dual Credit Courses	6
<b>PARENT-TEACHER CONFERENCES</b>	<b>7</b>
<b>ALASKA PERFORMANCE SCHOLARSHIP</b>	<b>7</b>
<b>COLLEGE AND APTITUDE EXAMS</b>	<b>7</b>
<b>COUNSELING</b>	<b>8</b>
<b>STUDENT CELEBRATIONS</b>	<b>9</b>
<b>ASSEMBLIES</b>	<b>9</b>
<b>INTERNET SAFETY AND USAGE AGREEMENT</b>	<b>9</b>
<b>SAFETY AND SECURITY</b>	<b>9</b>
Emergency Response Procedures	10
<b>STUDENT ATTENDANCE</b>	<b>11</b>
<b>PLANNED SCHOOL CLOSURES</b>	<b>12</b>
<b>MAKE-UP WORK</b>	<b>13</b>
<b>AFTER SCHOOL TUTORING</b>	<b>13</b>
<b>BATHROOM AND HALL PASSES</b>	<b>13</b>
<b>OFF-CAMPUS PASSES</b>	<b>14</b>
<b>DAILY BULLETIN</b>	<b>14</b>
<b>STUDENT DRESS</b>	<b>14</b>
NBMHS Core Values	14
Universal Dress Code	15
Enforcement	15
<b>LOCKERS</b>	<b>16</b>
<b>BREAKFASTS AND LUNCHES</b>	<b>16</b>
<b>MIDDLE SCHOOL ADVISORY</b>	<b>17</b>
<b>PERSONAL SNACKS AND BEVERAGES</b>	<b>17</b>
<b>STUDENT TELEPHONE CALLS</b>	<b>17</b>
<b>CHEATING AND PLAGIARISM</b>	<b>17</b>

<b>STUDENT-ISSUED MATERIALS</b>	<b>18</b>
<b>CAMPUS VISITORS</b>	<b>18</b>
<b>WEAPONS, KNIVES, AND LOOKALIKES</b>	<b>18</b>
<b>CELL PHONES AND ELECTRONIC DEVICES IN SCHOOL:</b>	<b>18</b>
<b>TOBACCO, VAPE, AND E-CIGARETTES</b>	<b>19</b>
<b>STUDENT ACTIVITIES GUIDELINES</b>	<b>19</b>
Student Conduct Eligibility	19
Student Activities	20
Athletic Fees and Balances Due	20
<b>ELIGIBILITY FOR PARTICIPATION IN EXTRACURRICULAR ACTIVITIES</b>	<b>20</b>
<b>STUDENT TRAVEL RULES</b>	<b>22</b>
<b>ASAA ELIGIBILITY EXCERPTS</b>	<b>23</b>
<b>DANCE SPONSORSHIP AND ELIGIBILITY</b>	<b>23</b>
<b>PROM GUIDELINES</b>	<b>24</b>
<b>SCHOOL AND ACTIVITY BUS EXPECTATIONS</b>	<b>24</b>
<b>HIGH SCHOOL STUDENT PARKING PERMITS</b>	<b>25</b>
<b>STUDENT SEARCH PROCEDURES</b>	<b>25</b>
<b>ELECTRONIC SURVEILLANCE</b>	<b>25</b>
<b>NOME-BELTZ BEHAVIOR GUIDELINES</b>	<b>26</b>
Behavior Response Flowchart	26
In School and Out of School Suspensions	26
<b>BEHAVIOR LEVEL DEFINITIONS AND DISCIPLINARY MEASURES MATRIX</b>	<b>27</b>
<b>STUDENTS RIGHTS &amp; RESPONSIBILITIES</b>	<b>32</b>
<b>GLOSSARY</b>	<b>33</b>
<b>NBMHS BELL SCHEDULE</b>	<b>38</b>
<b>STUDENT &amp; PARENT/GUARDIAN CONTRACT</b>	<b>40</b>

## NOME PUBLIC SCHOOLS VISION AND MISSION STATEMENT

### **Vision Statement:**

*Together – strong in identity, purpose, potential*

### **Mission Statement:**

*We inspire and empower students to be culturally grounded responsible citizens who are deeply connected to our community and world.*

## **POSITIVE BEHAVIOR INTERVENTIONS & SUPPORTS (PBIS)**

The purpose of this section is to inform NBMHS students and their families as we continue our implementation of Positive Behavior Interventions & Supports (PBIS) into campus life. Our goal is to provide all of our students with a safe and effective school environment where they can experience academic and behavioral success and be #nanookstrong.

### **What is PBIS?**

PBIS stands for Positive Behavior Interventions and Supports. PBIS focuses on creating and sustaining school-wide, classroom, and individual systems of support that improve the educational environment for all children. Our PBIS implementation plan includes clearly defined outcomes, research-validated practices, supportive administrative systems, and information for problem solving behaviors. All staff members at NBMHS will establish regular, predictable, positive learning and teaching environments. We will serve as positive role models to students as we teach expected school behaviors. We utilize a system in place for recognizing and rewarding expected behaviors called PBIS Rewards. By improving the school environment, we will increase learning time and promote academic and social success for every Nanook in the Den! For more information, please visit: [PBIS.org](https://www.pbis.org)

### **Nome Public Schools Behavior Purpose Statement**

As Nanooks, we care for ourselves and others in our culturally diverse world by making **SAFE** choices, showing **RESPECT**, and acting **RESPONSIBLY** as life-long learners and citizens.

### **School-Wide Behavior Expectations**

Campus teachers and staff will explicitly teach what it looks like to be respectful, responsible, and safe in every area at our school. These behavior expectations are clearly displayed on the walls around campus.



#### **Nanooks know:**

- **Safety**
- **Respect**
- **Responsibility**



## NBMHS Behavior Expectations Matrices

Consistent expectations are important and provide guidelines for success, opportunities for positive relationships, reduce problem behavior, and increase our school safety. Expectations should be simple and easy to remember, positively stated, and applicable to everyone in the Nanook Den. We work together to monitor and reinforce behaviors. The NBMHS Behavior Matrices will keep everyone on the same page and serve as the basis for school activities and lessons designed around school expectations.



## PROMOTION AND GRADUATION REQUIREMENTS

### Middle School Promotion Requirements

Middle School students are required to take 7 classes per day. The required classes are: Elective, Reading, Writing, Math, Physical Education or Music, Science, and Social Studies. All Middle School students are required to take a minimum of 6 semesters of Middle School classes to be promoted.

### High School Graduation Requirements

High school students must obtain 22 credits from various areas and complete a college and career readiness assessment in order to graduate which include: SAT, ACT, or WorkKeys. The required classes and credit breakdown is as follows ([BP 6146.1](#)):

Required Classes	Total MinimumCredits Required
Language Arts	4
Science	2
Mathematics	3

Social Studies	3
Health/Physical Education	1
Electives	9
<p><b>Note:</b> While 22 is the minimum requirement, most students will earn an excess of credits upon graduation. Take advantage of every learning opportunity to promote success after high school! For other graduation policies and credit information, please see <a href="#">AR 6146.1</a>.</p>	

To ensure the success of all Nanooks: We require all seniors to have a post-secondary plan prior to graduation and all 8th-grade students to have a high school plan upon promotion.

## WITHDRAWAL OR CHANGE OF CLASSES

High school student scheduling begins in the spring, but all schedules will be finalized within the first week of academic classes for enrolled students. Each year, a designated window is set for schedule revisions. After this window closes, classes may not be changed without permission of the administration or designee. A student who drops a course during the first six weeks of the semester may do so without any entry on his/her permanent record. A student who drops a course after the first six weeks of the semester shall receive an F grade on his/her permanent record, unless otherwise decided by the principal or designee because of extenuating circumstances. ([AR 5121](#))

## GRADE REPORTING

1. **Grading Period:** Report cards are given at the end of each of the four quarters with official transcript grades given out at the end of the 2nd and 4th quarters (S1 and S2 respectively).
2. **Progress Reports:** Approximately halfway through each quarter, parents/guardians will receive progress reports to notify them of a student's performance in school.
3. **Grades:** Nome Public Schools uses traditional Carnegie Grades (A,B,C,D,F) as indicators of student performance ([BP 5121](#) [AR 5121](#)). Students and guardians have access to all grading through PowerSchool, and they should contact teachers if discrepancies arise.

## NBMHS grading scale

100-90= A      89-80 = B      79-70 = C      69-60 = D      59 and lower =F

For high school courses, students must earn a minimum of 60% to earn credit for a course.

## High School Finals

All students will be required to take a final exam or complete a project/presentation for **core content classes** at the end of each semester. Grades for finals will not exceed 10% of the overall course grade. The schedule is as follows:

- Semester 1 review/finals week: **January 12-16, 2026**
- Semester 2 review/finals week: **May 26-29, 2026**

### Progress Reports & Report Cards

Progress reports, quarterly reports, and final grades will be sent out on the following schedule:

- |  |   |
|--|---|
| • 1 <sup>st</sup> Quarter Progress Reports   | Week of September 29, 2025                        |
| • <b>1<sup>st</sup> Quarter Report Cards</b> | <b>Week of November 3 (Q1 ends 10/31/2025)</b>    |
| • 2 <sup>nd</sup> Quarter Progress Reports   | Week of December 1, 2025                          |
| • <b>Semester 1 Report Cards</b>             | <b>Week of January 19 (Q2/S1 ends 01/16/2026)</b> |
| • 3 <sup>rd</sup> Quarter Progress Reports   | Week of February 16, 2026                         |
| • <b>3<sup>rd</sup> Quarter Report Cards</b> | <b>Week of March 30 (Q3 ends 03/27/2026)</b>      |
| • 4 <sup>th</sup> Quarter Progress Reports   | Week of April 27, 2026                            |
| • <b>Semester 2 Report Cards</b>             | <b>Week of June 1 (Q4/S2 ends 05/29/2026)</b>     |

## SCHEDULE INFORMATION

### Teacher Assistants

Seniors may be a TA (Teaching Assistant) upon approval from the guidance counselor, principal, and/or teacher. 11th-grade students who would like to be a Teacher's Assistant must have approval from administration. Students may not work as a TA for more than one period per semester. We will provide students with job descriptions and training to ensure their success in earning credit.

### Free Periods

Seniors may request a 1st or a 7th- hour free period as long as this does not hinder graduation; this requires a minimum of 19 credits. Students who do not have a class should either make arrangements with a teacher or leave campus during that time and sign in/out in the main office pending approval from their parent/guardian and administration.

### ANSEP Acceleration Academy

NBHS, in partnership with ANSEP (Alaska Native Science and Engineering Program) is thrilled to host the Acceleration Academy. Through this academy, Nome students will enroll in university courses that count towards high school graduation and any university degree program, participate in group study sessions facilitated by other ANSEP students, participate in hands-on projects led by practicing scientists and engineers, and participate in weekly community building and social activities. ANSEP will cover the cost of all ANSEP activities and the tuition and fees for ANSEP-approved courses.

### Dual Credit Courses

- With the exception of students enrolled in the ANSEP Acceleration Academy, students who take dual credit classes (100-level or above) through accredited institutions of higher learning can fulfill credits needed for graduation from NPS: .25 high school credit for one

credit college course; .5 high school credit for a 2 credit college course; 1.0 high school credit for a three credit college course.

- It is the student's responsibility to submit college transcripts to the counselor for review.
- 9-11th-grade students who wish to take a dual credit course must have permission from their parent/guardian and administration; seniors who would like to take more than two must have permission from their parent/guardian and administration.

## PARENT-TEACHER CONFERENCES

Our goal is to set up an event that will get more families in attendance to grow our partnerships. We will have a schedule out as soon as possible. **#familiesmatter**

- **Fall Conferences:**
  - Monday, November 10
  - Tuesday, November 11
- **Spring Conferences:**
  - Friday, February 13
  - Monday, February 16



## ALASKA PERFORMANCE SCHOLARSHIP

The [Alaska Performance Scholarship](#) provides an opportunity for Alaska high school students to earn a scholarship to help cover the cost of an Alaska postsecondary education. Alaska high school students who take a more rigorous curriculum, get good grades, and score well on college placement or work ready exams, can earn an Alaska Performance Scholarship to qualified Alaska colleges, universities, or vocational/technical programs.

## COLLEGE AND APTITUDE EXAMS

### College Entrance Exams

**PSAT:** Nome-Beltz High School offers college entrance tests throughout the school year. Students also have the opportunity to take the Preliminary Scholastic Aptitude Test / National Merit Scholarship Qualifying Test ([PSAT/NMSQT](#)) to help in their preparations.

We encourage sophomores and/or juniors to take the PSAT because the National Merit Scholarship Corporation offers scholarships based on test scores. A counselor will provide you with information and help with registration and deadlines.

Testing Dates
TBD

**SAT:** The Scholastic Aptitude Test (**SAT**) will be offered three times this school year. Most colleges and universities within the United States, as a prerequisite to college admission, accept the SAT and require a combined score of at least 1500 for college admittance. The SAT is offered on Saturdays and requires online registration at **The College Board**. Admissions to SAT are restricted, so sign up early with a school counselor. They will provide information about fee vouchers and study resources and will provide you with information and help with registration and deadlines.

Testing Dates
October 4, 2025 (Deadline TBD)
November 8, 2025 (Deadline TBD)
December 6, 2025 (Deadline TBD)
May 6, 2026

The American College Test (**ACT**) will be offered three times this school year. Most colleges and universities within the United States, as a prerequisite to college admission, accept the ACT and require a score of at least a 21 for college admission. The ACT is offered during the school week and requires registration with the College and Career Guide, who can also provide study resources and registration deadlines.

Testing Dates
February 14 (January 7th deadline)
April 11 (March 6th deadline)

### WorkKeys Assessment

The **WorkKeys** test is a compilation of assessments that build and measure workplace skills that affect job performance, increase the opportunity for career changes, and facilitate career advancement. We will release testing dates in the fall.

### Military Aptitude Exams

Depending on need, the Armed Services Vocational Aptitude Battery (**ASVAB**) will be offered twice this school year, once for juniors and once for seniors. The military uses the military entrance score, also called the Armed Forces Qualification Test (AFQT), to determine eligibility for admittance to the Armed Services. Juniors and seniors are encouraged to take the test. We will release testing dates in the fall.

## COUNSELING

Counselors can help with a variety of topics including scheduling questions, academic performance, future planning, collegiate questions and testing, social and emotional concerns,



and connecting you with resources. For students, the Counselor's Office works best when scheduling an appointment (email or in person). If you need help or have any questions, feel free to contact us. We are here for you!

## STUDENT CELEBRATIONS

We want to celebrate you! Each month, the administration will honor students who are showing Nanook values in a variety of capacities. Weekly celebrations will happen every Friday at the middle school and on a regular basis with high school students. We will showcase some of these students at the School Board Meeting. We welcome students and their families and loved ones to celebrate this recognition! **#nanookstars**



## ASSEMBLIES

Assemblies are scheduled for the instructional benefit of students and promotion of school spirit. Assemblies will be educational, cultural, and for school spirit. The Spirit Club will have responsibility for organizing and coordinating pep assemblies with a designee. **#nanookden #wegotspirit #howboutyou**

## INTERNET SAFETY AND USAGE AGREEMENT

All students are required to read, sign and abide by the Internet Safety and Usage Agreement. Violation of this agreement will result in the following consequences:

- 1<sup>st</sup> offense: suspension of use for 1 week;
- 2<sup>nd</sup> offense: suspension of use for 2 weeks;
- 3<sup>rd</sup> offense: suspension of use for 4 weeks;
- 4<sup>th</sup> offense: suspension of use for the semester;
- 5<sup>th</sup> offense: suspension of use for the remainder of the school year.

Inappropriate usage deemed extremely severe can result in moving directly to the 5<sup>th</sup> offense and suspension of privileges for one year. Offenses are subject to administrative review and approval. ([AR 6161.4](#))

## SAFETY AND SECURITY

Safety and security are high priorities at NBMHS. The following procedures and general information guide the school's daily efforts to provide a safe, structured, and inviting learning environment for all:

- Any time students arrive late or leave early it is important that they enter the building through the main entrance and sign in and out at the main office;
- All visitors must be pre-approved by the administration and check in at the office upon arrival; guests will wear a visitor badge throughout their visit;

- Any time a student is aware of dangerous situations or has a concern about the safety or well being of another student or staff member, that student is expected to share his or her concerns with a staff member.

## Emergency Response Procedures

Nome Public Schools has emergency procedures for students and staff to follow when emergency signals/announcements are broadcast in the school building. In addition to the regular monthly fire evacuation drills, students will also be informed of the district's emergency preparedness plan in the event of a violent intruder(s) on campus. The ALICE (Alert, Lockdown, Inform, Confront, Evacuate) approach saves lives, builds confidence in teachers and staff when it comes to making decisions, and mitigates risk factors. All NPS K-12 teachers and staff received training and will teach students for planned practice drills. You will receive more information through NPS mailings, announcements, and our newsletter. For more information on ALICE, parents and students should visit the website: [ALICE training](#) Additionally, NPS developed a communication protocol to inform our community of an event. While you will receive more information, please refer to the following image for a brief description:

### NPS Big 5 Emergency Procedures

ACTION	DESCRIPTION
	<p>Implement for the safety and privacy of individuals in distress and <b>not</b> when the safety of staff or students is an issue. Students remain in classrooms - no passes or allowing students to leave the classroom. Instruction continues, but students are held in the room if the bell rings.</p> <p>We will notify families once the Stay in Place is initiated and lifted.</p>
	<p>Initiate for an environmental hazard (ex. air quality, wildlife) in the surrounding area. All students and staff remain inside until otherwise directed. Instruction continues as planned. Further precautions may be announced to suit the situation.</p> <p>We will notify families when Secure Campus is initiated and lifted.</p>
	<p>Initiate ALICE (Alert/Lockdown/Inform/Counter/Evacuate) protocols for an immediate human threat of danger to occupants of a campus or school building.</p> <p>We cooperate with law enforcement to ensure the safety of our students and staff, which is our top priority. <b>DO NOT</b> come to the school or attempt calling the office. We will notify families when Violent Intruder is initiated and will send updates as they become available.</p>
	<p>Implemented when conditions outside the building or off-site are safer than inside or on-site (ex. gas leak, fire). Requires moving or directing students and staff to move from school buildings to a predetermined safe location.</p> <p>We urge parents and other visitors to avoid coming to the school or calling our office at this point in time. We will notify families when Evacuation is initiated and lifted.</p>
	<p>Implement during an earthquake or explosion to protect building occupants from flying and falling debris. Students and staff must immediately drop, cover, and hold on during the incident. May be followed by evacuation.</p> <p>We urge parents and other visitors to avoid coming to the school or calling our office until we have completed assessing the situation. We will notify families when Drop, Cover, and Hold On is initiated and lifted.</p>

## STUDENT ATTENDANCE

Regular attendance at school is necessary if students are to gain the full benefit from their educational opportunities. Students who have good attendance generally enjoy school more, achieve higher grades, and are more employable after graduating from high school. Nome Public Schools staff will do everything possible to provide a positive learning environment that will encourage students to attend. The staff and school will inform the parents of their child's attendance record, and through mutual cooperation, work to achieve satisfactory attendance.

(AR 5113) For more information on how attendance impacts learning, visit [Attendance Works](#) [#attendancematters](#) [#beinittowinit](#)

### Definitions

A) **Absences** - An absence is defined as when a student is not actually physically present in the appropriate class for any reason. All absences, whether excused or unexcused, are counted as absences.

B) **Excused Absences:** All excused absences **must be** accompanied by parent notification, preferably within two (2) school days of the absence.

#### 1. Excused absences include:

- a. Injury or illness
- b. Quarantine
- c. Death in the immediate/extended family
- d. Medical or dental appointment
- e. Court or administrative proceedings
- f. Religious observance
- g. Subsistence/cultural activities

2. **School Sponsored Absences:** School sponsored activity absences are absences due to student participation in school-sponsored clubs, sports activities, or field trips. These absences are considered to be part of the regular school program. Church groups, scouts, beauty pageants, club swim teams, leagues, non-school sponsored activities, etc, are not included as school sponsored activities. Students missing regular classes due to school-sponsored activities, such as sporting events, are expected to make plans with their teachers in advance of travel.

Students who are traveling or miss school for school activities will need to communicate this to their teachers. Please remember that teachers are **not** required to provide specific instructional assignments during a planned absence, but students will have the opportunity to make-up classwork, assignments, and quizzes or tests upon their return. It is the responsibility of students to ensure that they utilize school supports to make up work.

For more information regarding activities sanctioned by the [Alaska School Activities Association \(ASAA\)](#), please visit their website. We also recommend that you familiarize



yourself with the [2025-2026 ASAA Handbook](#) as NBMHS adheres to all policies and guidelines for its ASAA supported events.

### 3. Additional details:

- Any absence, including medical, in order to count as excused, must be accompanied by a parent notification within two (2) school days of the absence.

C) **Unexcused Absences:** An unexcused absence is one that does not meet the requirements of an excused absence.

D) **Tardy:** All students arriving late to campus must check in at the main office before heading to class - this is for the safety and security of our building. Students excessively late for class are subject to administrative review and behavior consequences, depending on frequency and severity.

E) **Skipping:** A student who is considered on campus, but has willfully missed an inordinate amount of the regular class period(s) to which he/she was assigned, or who has traveled outside of his/her assigned classroom space without first obtaining school permission is documented as skipping. All instances of skipping class are subject to administrative review and behavior consequences, depending on frequency and severity.

F) **Truancy:** A full day of unexcused absences in all classes. Administration will make contact home in the case of truancy; excessive truancy will be reported to the appropriate agencies.

### Attendance Recognition and Celebration

We will recognize students with excellent attendance with incentives and announcements through various outlets such as: pep assemblies, social media, newsletters, and school board meetings; other celebratory events and recognition will occur throughout the year. Being present WILL make a difference in your education and school experience! #beinittowinit

### PLANNED SCHOOL CLOSURES

To help improve attendance and your planning for the year, here is a list of planned school closures. NBMHS will NOT hold school on the following days:

September 1	Labor Day
November 10-11	Parent-Teacher Conferences
November 27-28	Thanksgiving Break
December 22-January 2	Winter Break
January 5	Teacher Inservice
February 13 & 16	Parent-Teacher Conferences
March 16-20	Iditarod (Spring) Break
April 24	Teacher Inservice
May 25	Memorial Day



## MAKE-UP WORK

### Planned Absences

Please remember that teachers are **not** required to provide specific instructional assignments during a planned absence, but students will have the opportunity to make-up classwork, assignments, and quizzes or tests upon their return and we will do our best to offer support:

- As a general rule, students will be given one day for each school day missed up to a maximum of 10 make-up days in order to potentially receive full credit for all make-up assignments. Extended absences will be considered on an individual basis.
- Absences that occur at the end of a grading cycle might result in an incomplete (INC) course grade; students will have 2 weeks (10 school days) to submit the appropriate work required for course credit. All outstanding work not completed by the agreed upon due date will receive a zero (0% score). Please note that grades for the 2nd semester are due the day after school releases and incompletes will not be assigned. Incomplete grades for a course will be at the administration's and/or teacher's discretion.
- Inform the Main Office if you are out for subsistence; we honor these activities with additional exemptions and support. #subsistencevalues
- *Absences impact learning; extensive absences will impact a student's ability to succeed. Please make every effort to be in class while school is in session.*

Students shall be given the opportunity to make up missed assignments / assessments due to an excused absence, and will receive full credit if the work is turned in according to the above make-up work policy.

Students who miss schoolwork because of unexcused absences or suspensions will be given the opportunity to make up missed work for credit; refer to the make-up work policy above. Teachers will assign such makeup work as necessary to ensure academic progress, not as a punitive measure. (BP 6154)

## AFTER SCHOOL TUTORING

Students who would like support or time to complete current or make up work may come to tutoring. High school students may receive tutoring from 3:25pm until 4:00pm on Tuesdays, Thursdays, and Fridays and may opt to take the middle school bus at 4:10pm. After 4:10pm, students must be in an organized activity to remain on campus. Students who attend tutoring regularly show improvements! We will offer snacks when possible, but plan ahead and bring something to get you through! We also offer Migrant Ed tutoring on Tuesdays and Thursdays from 4:10-5:00; an Activity Bus will provide transportation

## BATHROOM AND HALL PASSES

- Designated bathroom passes are only for trips to the restroom and/or water fountain. Only one student in a class may use a bathroom pass at any given time.

- For other situations when a student leaves the room, they must have a hall pass, signed by a staff member. An acceptable pass indicates the date, time left, and destination. Teacher Assistants (TAs) and other designated students will have provided passes/lanyards whenever they are out of the room completing their work.

## OFF-CAMPUS PASSES

NBMHS is a closed campus, which means students are not allowed to leave during the school day, including lunch time, without parent's permission and a principal or principal designee's approval. Should you have to leave campus sometime during the school day you must:

- **BRING** a written note from your parent or guardian on the day that you need to leave. Your parent or guardian may also send an email, but phone calls will not be accepted.
- **SHOW** your teacher the approved pass provided by the main office; before leaving campus, you must sign out with the Attendance Secretary. Students who do not have a vehicle registered must be accompanied by a guardian or guardian approved person.
- **STOP** in the main office and sign in so that you can go to class when you return.
- Note: Students who leave/return during lunch must be signed in/out with a parent/guardian listed in PowerSchool.
- **Leaving campus without permission will result in an automatic one-day Out of School Suspension; repeat offenses will result in more severe disciplinary action.**

## DAILY BULLETIN

All notices of club meetings, general information, athletic, and social events are announced each day at the start of 1st-period via the Daily Bulletin. Students can check the bulletin in PowerSchool for pertinent information and announcements. Students who would like to submit information must have their notices approved and emailed to the office the day before to ensure publication.

## STUDENT DRESS

NBMHS believes that students and their parents/guardians hold the primary responsibility in determining a student's personal attire, hairstyle, jewelry, and personal items (backpacks, book bags). Schools are responsible for assuring that student attire, hairstyle, jewelry, and personal items do not interfere with the health or safety of any student and do not contribute to a hostile or intimidating environment for any student. Dress and appearance are an integral part of a positive educational atmosphere; we aim for professional dress to encourage post-secondary success and workplace readiness.

### NBMHS Core Values

In relation to student dress, NBMHS's core values are the following:

- Students should be able to dress and style their hair for school in a manner that expresses their individuality without fear of unnecessary discipline or body shaming;
- Students have the right to be treated equitably. Dress code enforcement will not create disparities, reinforce or increase marginalization of any group, nor will it be more strictly enforced against students because of racial identity, ethnicity, gender identity, gender expression, gender nonconformity, sexual orientation, cultural or religious identity, household income, body size/type, or body maturity;
- Students and staff are responsible for managing their personal distractions; and
- Students should not face unnecessary barriers to school attendance.

### **Universal Dress Code**

Students must wear:

- Top (shirt, blouse, sweater, sweatshirt, tank, etc.);
- Bottom (pants, skirt, dress, etc.); and
- Footwear.

This dress code permits additional student attire requirements when necessary to ensure safety in certain academic settings (physical activity, science or CTE courses, for example). Additionally, this policy allows for reasonable variation in required student attire for participation in activities such as swimming.

Students may not wear clothing, jewelry, or personal items that:

- Are pornographic, contain threats, or that promote illegal or violent conduct such as the unlawful use of weapons, drugs, alcohol, tobacco, or drug paraphernalia;
- Demonstrate hate group association/affiliation and/or use hate speech targeting groups based on race, ethnicity, gender, sexual orientation, gender identity, religious affiliation, or other protected groups;
- Show private parts (breasts, nipples, genitals, buttocks, belly buttons). Clothing must cover private parts in opaque (not able to be seen-through) material;
- Cover the student's head or face to the extent that the student is not identifiable. This includes but is not limited to hoodies, hair, non-medical masks and other non-religious headgear; or
- Demonstrate gang association/affiliation.

### **Enforcement**

- Administration is required to ensure that all staff are aware of and understand the guidelines of this policy. Staff will use reasonable efforts to avoid dress-coding students in front of others and contacting administration when they have concerns.

- Students will be disciplined or removed from class as a consequence for wearing attire in violation of this policy when the attire creates a substantial disruption to the educational environment, poses a hazard to the health or safety of others, or factors into a student behavior rule violation such as malicious harassment or the prohibition on harassment, intimidation, and bullying.
- Typical consequences for a violation of this policy include parent/guardian contact or conference and the directive to change or remove the non-complying attire. A student may be instructed to leave their classroom briefly to change clothes. NBMHS will provide clothing when possible. Administration will notify a student's parent/guardian of the school's response to violations of the student dress policy.

## LOCKERS

- **Middle School:** Because backpacks are not allowed in the classroom, all middle school students will be assigned a locker where they are expected to store all personal items, including backpacks; bulky items may be neatly placed at the locker benches.
- **High School:** As part of their orientation, all freshmen will have assigned lockers; sophomores, juniors, and seniors may request a locker.

### Regarding ALL NBMHS lockers:

- Keep lockers organized and secure at all times;
- Avoid jamming lockers; this causes damage that could result in fees. Students who set lockers may lose privileges;
- We encourage locker decorations; however, students are responsible for clearing lockers at the end of the year. Students are responsible for any adhesives/stickers used on their lockers - be careful, you might be scrubbing away! #scrubadubdub
- Lockers are the property of the school and can be searched by administration to ensure school safety.

## BREAKFASTS AND LUNCHES

All food including fruit needs to stay in the cafeteria. High school students may also use the Nanook Room; with permission, middle school students may use this space as well.

### ***Please be cooperative regarding the following rules:***

- **Honor** others' personal space
- **Take** reasonable servings;
- **Bring** all trays to the dishwashing area;
- **Deposit** all meal litter into wastebaskets;
- **Leave** the table and floor around your place in clean condition for others;
- **Keep** food trays in the cafeteria. We can make exceptions for school-related lunch meetings; in that case, make sure you allow time to return your tray!

Students are not allowed to use the Home Econ room for personal use; the cafeteria has microwaves for use during designated meal times.

### **Middle and High School students:**

- After getting off of the bus, **all students will head to the cafeteria**, even if they are not eating.
- Breakfast dismissal is at 8:25 for HS and 9:05 for MS students, who will head to their Advisory classes with their teachers.
- Advisory runs from 9:10-9:25 on most days; with 1st-period starting immediately after.

## MIDDLE SCHOOL ADVISORY

We assign all middle school students to an Advisory class. Advisory is where students turn in their personal devices. Advisory is a structured support time for academics, social and emotional learning, and bonding within classes and cohorts. Get ready for some competitions!

## PERSONAL SNACKS AND BEVERAGES

Non-caffeinated beverages and snacks are at the discretion of teachers. No food or drink is allowed while using technology. Please clean up after yourselves!

## STUDENT TELEPHONE CALLS

With permission from their classroom teachers and a pass, students may use the phone in the main office. Please use the time between classes for non-emergency calls from the office phone. If there is an emergency situation, the office will contact the student. When students need to call home because of illness, someone in the office must speak to a parent/guardian to verify dismissal and make arrangements for transportation home.

## CHEATING AND PLAGIARISM

Students who lie, cheat, plagiarize, or claim products generated by Artificial Intelligence as their own violate the **NPS School Board Policy 5131.9 regarding Academic Honesty**. Students plagiarize when they quote, paraphrase, summarize, or present someone else's work without giving credit. All student work considered to be the result of cheating or plagiarism will receive ZERO credit (0%) for that assessment. Plagiarism is a serious offense which can impact credit acquisition and graduation. Additionally:

- **First offenses** will result in a zero for the assessment, a verbal warning, and contact with parents/guardians;
- **Further offenses** will be reported to administration, who will determine disciplinary measures;
- **Teachers will not assign extra credit or make up assignments as a substitute for plagiarized work.**

## STUDENT-ISSUED MATERIALS

Students are responsible for the replacement cost in case of loss of, or damage to, issued materials (textbooks, laptops, etc.). Students must clear their balance and resulting charges in order to receive official transcripts and other important school documentation.

## CAMPUS VISITORS

All parents and guardians are welcome to campus and should check in at the main office upon arrival. Access to the school campus during school hours requires permission from administration and receipt of a guest pass. In order to keep a structured academic environment, our campus does not allow visitors to attend school with currently enrolled students throughout the school day, unless guests make arrangements with teachers and administration ([BP 1260](#)).

## WEAPONS, KNIVES, AND LOOKALIKES

Weapons, knives and lookalikes (including but not limited to multipurpose tools, pocket knives, toy knives, guns, squirt guns, bombs, grenades, fireworks, lighters, martial arts equipment, metal knuckles, etc.) are not permitted on the school bus or on campus. Possession of any of these items may result in police notification, out-of-school suspension, or recommendation for expulsion.

## CELL PHONES AND ELECTRONIC DEVICES IN SCHOOL:

Alaska House Bill 57 mandates that school districts create policies restricting cell phone use. Research recognizes that personal devices often diminish the impact of instructional time. These devices include, but are not limited to: cell phones, smart watches, headphones/earbuds and tablets. To avoid classroom disruptions, please contact the school office (907- 443-5201) to communicate with students during the academic school day. NBMHS staff and administration will enforce the following:

### Middle School Policy:

- All middle school students will silence devices/use Airplane Mode and turn them in at the start of Advisory. Students will retrieve devices at the end of the academic day. Middle school students will not have access to their devices between 9:10-4:10pm.

### High School Policy:

- At the beginning of every class period, high school students will silence devices/use Airplane mode and turn them in to the designated area. When the bell rings at the end of class, students will retrieve their devices.
- High School students may use their cell phones before 1st-period, during passing periods, at lunch, and after dismissal. Parents/Guardians should be aware of the bell schedule ([page 38](#)) to understand students' access time to devices. It is important to learn how to regulate usage, so let's support our Nanooks!

### Inappropriate Usage for Middle and High School:

- Administration will address noncompliance with the outlined policy above, which will result in confiscation and appropriate disciplinary measures:



- o **1st offense:** Administration will confiscate devices and hold them in the main office until the end of day and contact parents. Students will retrieve devices after the last bell.
- o **2nd offense:** Administration will confiscate the device, hold it in the main office, and contact parents about the situation. Parents may retrieve their child's device from the school or make arrangements with administration to deliver the device after school hours.
- o **Additional offenses** may result in further disciplinary action.

## TOBACCO, VAPE, AND E-CIGARETTES

NBMHS is a tobacco and drug free campus and prohibits the use of all tobacco products by staff, students, visitors, and community members in or on NBMHS property, on school district-sponsored transportation, at school district-sponsored events, in district-owned vehicles, and within five hundred feet of schools. NBMHS prohibits the possession of tobacco products and other substances by students in or on NBMHS property, on school-sponsored transportation, at school-sponsored events, and in school-owned vehicles. For purposes of this policy, the term "tobacco products" includes but is not limited to, cigarettes, cigars, snuff, smoking tobacco, smokeless tobacco, nicotine, electronic smoking/vapor devices and vapor products, non-FDA approved nicotine delivering devices, chemicals or devices that produce the same flavor or physical effect of nicotine substances; and any other smoking/vaping equipment, material, or tobacco innovation.

## STUDENT ACTIVITIES GUIDELINES

Student activities include: clubs, organizations, sports, as well as all special activities sponsored by these groups. All student activities are important for student growth, however, to participate, students must follow all required eligibility and participation guidelines. Students wishing to remain in the building until their activities begin must wait in the Nanook Room.

### Student Conduct Eligibility

In accordance with ASAA regulations, students who are assigned more than one day of In-School Suspension (ISS) or who are assigned to Out-of-School Suspension (OSS) will face ineligibility. Ineligible students cannot participate in any activity, travel, and/or competition and may not attend dances; they may continue to participate in practices at the coach's discretion. Students serving OSS may not be on campus or use school property. Please see the [ASAA handbook](#) for more information.

### Student Activities

The following is a list of organizational clubs and sports available at Nome-Beltz at the time of publication; additional activities may be added throughout the year. Students must be enrolled in order to participate in school activities. Scholastic Grade Rules apply to all ASAA events:



## Organizational Clubs

Student Council  
Drama Club  
National Honor Society  
NNYLO (Nome Native Youth Leadership)  
Educators Rising  
NYO (Native Youth Olympics)  
Pep Band  
Spirit Club  
Culture Club  
Skills USA  
Pride Club  
Battle of the Books  
Spelling Bee

## ASAA Sponsored Activities

Boys Basketball (JV & Varsity)  
Girls Basketball (JV & Varsity)  
Cross Country Running (High School)  
Cheerleading (JV & Varsity)  
Band / Choir (High School)  
Volleyball (JV & Varsity)  
Swim Team (Varsity)  
Esports (JV & Varsity)  
Wrestling (JV & Varsity)  
Skiing (JV & Varsity)  
Track and Field

## Athletic Fees and Balances Due

The school district has chosen to assess an athletics fee to assist in offsetting the cost of administering the athletic program at Nome-Beltz. A student participating in sports will be charged \$100.00 per sport and \$50 for each child or additional sport. Athletic fees and balances due to the school must be paid in full prior to activity participation. Athletic Fee Waivers may be completed as part of enrollment.

## ELIGIBILITY FOR PARTICIPATION IN EXTRACURRICULAR ACTIVITIES

### 1. Alcohol, Drug, Tobacco, or Other Controlled Substances

The Alaska School Activities Association adopted a Citizenship Rule for athletes. This rule will be statewide and sets the consequences for athletes who are expelled from school as well as those caught using tobacco, alcohol, or drugs. Violations will follow a student within the state of Alaska. In short, the consequences for athletes who are caught using tobacco, alcohol, or drugs will be:

- **1st offense:** 10-day suspension from practice and competition; this can be reduced to a 5-day suspension and practice can be resumed if the educational component is completed by the student and the parent/guardian.
- **2nd offense:** 45-day suspension from interscholastic activities and practice; no reduction in length of the suspension; educational component is required to be completed by the student and parent/guardian.
- **3rd offense:** Suspension for 1 calendar year from interscholastic activities and practices; if the required educational component is completed for student and parent, the student may return to practice.
- **4th offense:** Student privileges to participate in interscholastic activities and practices will be revoked for the remainder of the student's high school years.

Please discuss this policy with your family as well as the dangers of using substances in general. The entire policy can be viewed at the [Alaska School Activities Association](#) website.

### 2. Attendance at After-School Functions

Students serving OSS may not be on campus throughout the duration of their suspension. After returning to class, students may participate in school activities and events.

### 3. Activity Progress Reports/Grade Checks

The activities director will check the grades of all participating students prior to competition and/or travel. These checks will occur on a rotating Monday schedule, which will be posted throughout the school. The following procedure will be used for all students that are declared as ineligible or eligible based upon the PowerSchool grade check:

- 1) On designated Mondays administration will certify all students as either eligible or ineligible based on current NPS guidelines. Students certified as ineligible will be held out of travel and competition for the next seven calendar days. **Teachers will not accept student work for grading on eligibility check days to ensure equitable practices for all students.**
- 2) Administration will provide a set of the Activity Progress Reports to the appropriate sponsor for distribution to the participants. Administration will also maintain a set of the activity progress reports.
- 3) The participants should return the parent signed Activity Progress Report to their coach/sponsor prior to travel and/or competition.

### 4. Scholastic Grade Rule

- Student academic performance must be a priority. Student involvement in extracurricular activities has been demonstrated to contribute to higher student achievement. Students, parents, coaches and sponsors should all be aware of a student's academic performance on a continuous basis.
- Students must maintain a minimum 2.0 cumulative GPA on a 4.0 scale to be eligible for any extra-curricular activity. *During eligibility checks, a student who falls below a 2.0 GPA or who has more than one failing grade will be ineligible for competition or travel.* First quarter eligibility will be determined by the prior year's semester grades, with the exception of first quarter incoming freshmen.
- Ineligible students will not be allowed to travel or participate in contests or performances, but may continue to practice at coach/sponsor discretion.
- Students with more than one failing grade on their Activities Progress Report will not be permitted to travel or participate in contest(s) that week. Activity Progress Reports are required in season, prior to competition or performance as appropriate.
- Students must also meet the academic requirements that are set by the ASAA board.

### 5. School Attendance

Students must:

- **Attend** all classes the same day to participate in an event/practice;
- **Attend** school the day after travel to be eligible for the next week of scheduled competition.

If the student has a medical appointment or has received administrative approval, the absence shall not preclude participation.

### 6. Student Conduct

Students are role models and ambassadors of Nome-Beltz and our community. **Any student assigned to more than one day of In-School-Suspension (ISS) or who is assigned Out-of-School Suspension (OSS) may be ineligible for participation in any activity, travel, or competition, and other extra-curricular activities including dances and prom.**

## STUDENT TRAVEL RULES

1. **Students must obey the instructions of the chaperone(s).** Students, who display disobedience or uncooperativeness to the chaperone(s), to the extent that safety or chaperone effectiveness is compromised, may be returned to their home-site with administrative (principal, assistant principal or superintendent) concurrence, and their parent/guardian billed by the school district for the cost of return travel.
2. **The use of tobacco, alcohol, and/or drugs is prohibited regardless of the age of the student.** Students who break the laws of Alaska, such as in the case of shoplifting, alcohol possession or consumption, drug use, etc., will be reported to local law enforcement, the principal, and parent(s)/guardian(s). The student will also be returned to their home-site and their parent-guardian billed by the school district for the price of return travel.
3. **Students must attend all classes on the day of a trip prior to departure and the day after the return from travel.** Students failing to attend classes on the day of departure will not be allowed to travel and failing to attend the day after will be ineligible for the next week of competition. The Principal or their designee may excuse students from attending classes. Permission to miss classes on the day of departure should be secured no later than the day before the trip departure date.
4. **Students will be with the chaperone(s) at all times when traveling.** Chaperone(s) may assign students to groups of at least three students while at a mall, movie or event. Under no circumstances will students be permitted to leave the building without a chaperone(s) in attendance.
5. **Students must dress appropriately for cold weather travel on commuter airlines.** This includes parka, insulated boots, gloves, insulated pants, and insulating headgear. All are to be worn on the plane. Appropriate clothing for both departure and arrival destinations is required when traveling on a major airline.
6. **Students must respect the chaperone(s) decisions regarding the selection and approval of all activities.** Only movies rated "G", "PG" and "PG-13" shall be permitted.
7. **Unless the schedule absolutely does not permit it, time will be set aside daily for students to work on classroom assignments.**
8. **Students will not be out of their rooms following curfew, lights out and bed check.** Offenses may result in the following: student(s) being returned to their home-site with home-site administrative (principal, assistant principal or superintendent) concurrence and their parent-guardian billed by the school district for the price of return travel; out of school suspension.

## ASAA ELIGIBILITY EXCERPTS

1. **ASAA Enrollment Rule**
  - All freshmen, sophomore and junior students must be enrolled in a minimum of five (5) semester units of credit or the equivalent to be eligible;

- Seniors must be enrolled in a minimum of five (5) semester units of credit or the equivalent to be eligible;
- In addition, all students must maintain at least an overall 2.0 GPA during the current semester to remain eligible. Students who do not maintain an overall 2.0 GPA may regain eligibility during the current semester by achieving and maintaining an overall GPA within the school's grading system.

## 2. Semester Credit Rule

### Freshman, Sophomores, and Juniors

- Must have passed at least five (5) semester units of credit or the equivalent during the previous semester.
- Must have maintained at least an overall 2.0 GPA during the previous semester.
- Underclassmen who have not maintained an overall 2.0 GPA during the previous semester may regain eligibility during the current semester by achieving and maintaining an overall 2.0 GPA within the school's grading system.

### Seniors

- First entering 12<sup>th</sup> grade must have passed at least five (5) semester units of credit or the equivalent during the previous semester.
- All seniors must have maintained at least an overall 2.0 GPA during the previous semester
- Seniors who have not maintained a 2.0 GPA during the previous semester may regain eligibility during the current semester by achieving and maintaining an overall 2.0 GPA within the school's grading system.

3. **Maximum Participation:** No student may participate in more than four (4) seasons in any specific interscholastic activity.
4. **Age Rule:** A student who becomes nineteen (19) years of age by August 1 shall be ineligible for interscholastic competition.

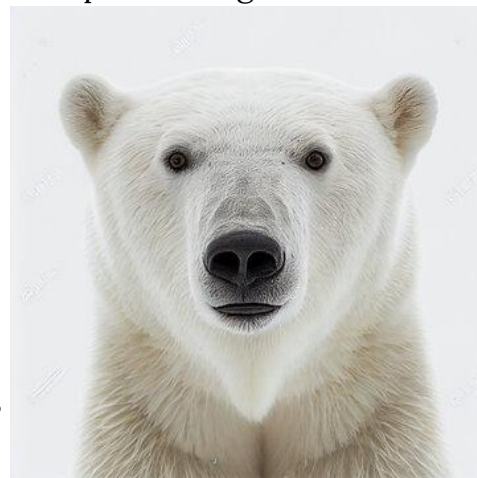
## DANCE SPONSORSHIP AND ELIGIBILITY

The following set of rules shall be read over and understood by a club or organization wishing to hold a dance. It will be the responsibility of the sponsor to make certain that dances are run in strict adherence to the rules. When decorating for a dance, only approved adhesives may be used to stick material to walls to prevent damage. It is the sponsor's responsibility to cooperate and coordinate any decorating for any dance, including prom, with campus maintenance.

### For all school dances, sponsors will:

1. **Pre-approve** the event with administration;
2. **Provide** a list of chaperones; **have** chaperones initial or sign the Activity Request Form. At least two (2) NPS staff members, and enough chaperones to properly monitor students are required to be present for the duration of the dance;
3. **Ensure** dances scheduled on game nights align with Activity Director expectations; Dance times will be published and shall end no later than 11:30pm. The Prom schedule may be extended upon administrative approval;

4. **Adhere** to NBMHS policy regarding attendance: With the exception of high school prom and designated high school sports weekends, students who do not attend Nome-Beltz will not be permitted at dances;
5. **Monitor** students, who must remain in the dance area. No one is to enter any other part of the building without a supervisor. Students who leave a dance will not be readmitted, this includes returning to vehicles;
6. **Close** doors one and one half (1-1/2) hours after the dance starts, or at 10:00 P.M., whichever is earlier. Principals will give permission for late entry only to students whose jobs last beyond the closing of the doors or students with a legitimate reason.



**Additionally:**

- Middle school students may not attend high school dances and high school students may not attend middle school school dances.
- Students in violation of school rules at dances or school events will be dealt with in the same manner as if the violation occurred during a normal school day.
- No open containers, tobacco products, drugs and/or alcohol of any kind are permitted per state law and school policy. It is the responsibility of the supervisors to notify the police of any violations. All attendees are subject to bag searches. Disciplinary actions will align with NBMHS policies.

## PROM GUIDELINES

The privilege of attending the Nome-Beltz High School prom shall be governed by these guidelines:

1. Attendance at prom is open to all NPS high school students.
2. Students at Nome-Beltz may invite other students to the prom by submitting a **Prom Guest Permission Form** and approval from the administration. Guests must be at least 14 years old and/or in 9<sup>th</sup> grade and must be under the age of 21.
3. Students serving OSS on the day of prom will not be allowed to attend; if prom is a weekend event, students serving OSS the school day before and/or after will not be allowed to attend.

## SCHOOL AND ACTIVITY BUS EXPECTATIONS

**Students must remember that riding the bus is a privilege, not a right.** The principal, assistant principal, bus contractor, and/or the superintendent can deny a student's privilege of riding the bus for any misconduct. The behavior matrix below ensures that all students are safe, responsible and respectful, even to and from school. #nanooksknow #safetyfirst

Be Respectful	<ul style="list-style-type: none"> <li>• Follow driver and aide's directions</li> <li>• Use kind words and actions</li> <li>• Keep voices at classroom level</li> </ul>
Be Responsible	<ul style="list-style-type: none"> <li>• Take care of yourself and others</li> <li>• Save snacks and drinks for later</li> <li>• Keep bus clean</li> </ul>
Be Safe	<ul style="list-style-type: none"> <li>• Sit and stay in seat</li> <li>• Keep hands and feet to self</li> <li>• Report unsafe behavior</li> <li>• Allow the driver to focus</li> </ul>

## HIGH SCHOOL STUDENT PARKING PERMITS

NPS provides transportation to and from school and we encourage all students to use this service. In order to use a personal vehicle of any type (including snow machines, ATVs, and motorcycles) for transportation to and from school, students 16 and older must register for a parking permit. The process is as follows:

1. **Complete and sign** a Student Driver Parking Permit Form, which includes a copy of the student's valid State of Alaska driver's license.
2. **Place** parking permit on the dashboard when on campus to ensure visibility.

Additionally, all students in possession of a parking permit must adhere to the following:

3. **Remain** parked for the entire day unless permission allows otherwise;
4. **Avoid** parking in front of outlets to ensure teacher/guest access;
5. **Park** only in the middle section of the parking lot or south of the RC area;
6. **Provide** written parent/guardian permission in advance in the rare occasion a student is leaving during their regular scheduled day;
7. **Operate** vehicles in a safe manner. Students who operate their vehicles in a reckless manner on campus may have their driving privileges and permits revoked.

## STUDENT SEARCH PROCEDURES

Nome Public Schools staff and Board recognize that incidents may occur where the health, safety and welfare of students and staff are jeopardized. Such incidents necessitate the search and seizure of students, their property, or their lockers by school officials. **Administration may conduct searches without notification.** (BP 5145.12)

## ELECTRONIC SURVEILLANCE

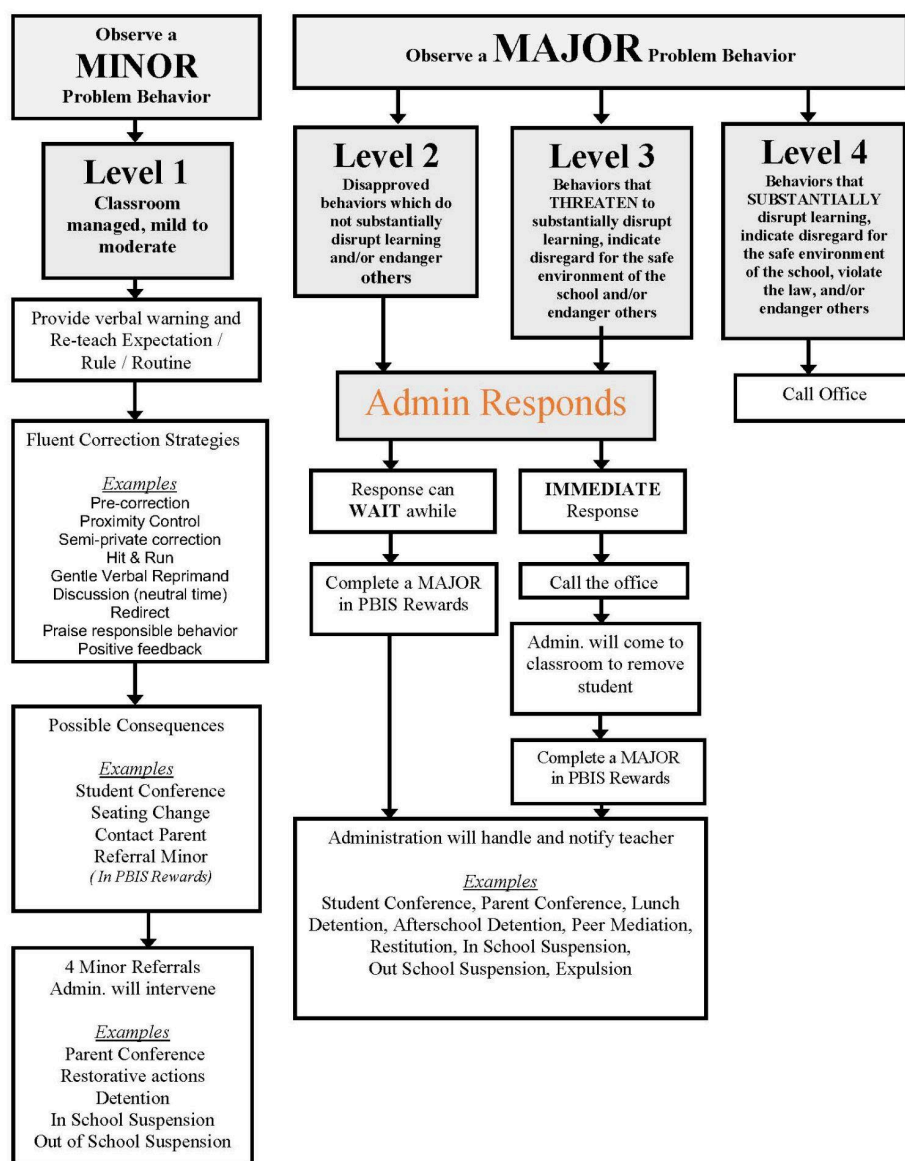
Nome Public Schools uses electronic surveillance equipment for safety and security purposes throughout the public areas of our campus. (BP 3515.6)

## NOME-BELTZ BEHAVIOR GUIDELINES

Incidents requiring disciplinary actions are divided into four categories according to the level of severity and disruption of a safe, respectful and responsible school environment. This matrix lists the most common behavior issues and is not inclusive of all possible behavior issues that can arise during a school day or activity. The administration may alter discipline as deemed necessary. Unacceptable behavior not listed will be handled on an individual basis using the progressive discipline model as a guide to consequences.

### Behavior Response Flowchart

We want complete transparency in how we respond to behaviors in the classroom. Teachers employ various corrective strategies in the classroom for minor problem behaviors and administration will respond appropriately to major problem behaviors. The behavior response flowchart illustrates how our processes work.



### In School and Out of School Suspensions

- Grounds for suspension; (1) continued willful disobedience or open and persistent defiance of reasonable school authority; (2) behavior that is threatening or harmful to the welfare, safety, or morals of other pupils or a person employed or volunteering at the school.
- This matrix is intended to be a guide. The administration may alter disciplinary measures as appropriate in partnership with the superintendent.



## BEHAVIOR LEVEL DEFINITIONS AND DISCIPLINARY MEASURES MATRIX

<b>Level 1 (Minor Referrals)</b> <ul style="list-style-type: none"> <li>Classroom level behavior:Mild-Moderate</li> </ul>	<b>Level 2 (Major Referral)</b> <ul style="list-style-type: none"> <li>Disapproved behaviors which do not substantially disrupt learning and/or endanger others.</li> <li>Response from administration within 24 hours</li> </ul>	<b>Level 3 (Major Referral)</b> <ul style="list-style-type: none"> <li>Behaviors that threaten to substantially disrupt learning, indicate disregard for the safe environment of the school, and/or endanger others</li> </ul>	<b>Level 4 (Major Referral)</b> <ul style="list-style-type: none"> <li>The offenses listed within level 4 will be dealt with in accordance with its section located within the Nome Public Schools board policy website.</li> <li>School consequences are separate from any legal consequences that may arise from the situation (contacting the police and other law enforcement agencies.)</li> <li>(<a href="#">BP 5131.6</a>: Alcohol and other Drugs; <a href="#">BP 5131.63</a>: Performance Enhancing Drugs;<a href="#">BP 5131.7</a>: Weapons and Dangerous Instruments)</li> </ul>
<ul style="list-style-type: none"> <li><b>Academic misconduct/Cheating/Plagiarism</b></li> <li><b>Attendance Related</b> <ul style="list-style-type: none"> <li>Tardies</li> </ul> </li> </ul>	<ul style="list-style-type: none"> <li><b>Academic misconduct/Cheating/Plagiarism</b> <ul style="list-style-type: none"> <li>Repeat offense</li> </ul> </li> <li><b>Attendance Related</b> <ul style="list-style-type: none"> <li>Skipping</li> </ul> </li> </ul>	<ul style="list-style-type: none"> <li><b>Attendance Related</b> <ul style="list-style-type: none"> <li>Skipping</li> <li>Repeat offense</li> </ul> </li> <li><b>Bullying/Harassment/Intimidation and Cyberbullying</b></li> </ul>	<ul style="list-style-type: none"> <li><b>Alcohol</b> <ul style="list-style-type: none"> <li>Possession/under influence</li> </ul> </li> <li><b>Assault</b></li> <li><b>Bullying /Harassment /Intimidation and</b></li> </ul>



<ul style="list-style-type: none"> <li>• <b>Dangerous actions/Unsafe behaviors not otherwise listed</b> <ul style="list-style-type: none"> <li>○ Roughhousing</li> <li>○ Touch</li> </ul> </li> <li>• <b>Disrespect</b></li> <li>• <b>Disruptive behavior</b></li> <li>• <b>Dress code violation</b></li> <li>• <b>Dysregulation</b></li> <li>• <b>False reports/False statements</b></li> <li>• <b>Insubordination/Willful Disobedience (Not meeting behavior expectations)</b> <ul style="list-style-type: none"> <li>○ Gum chewing</li> </ul> </li> </ul> <p><b>Inappropriate Behaviors</b></p> <ul style="list-style-type: none"> <li>■ Language</li> <li>■ Touch</li> <li>■ Use of materials</li> <li>■ Use or possession of personal electronics</li> </ul> <ul style="list-style-type: none"> <li>• <b>Obscenity/Profanity</b></li> <li>• <b>Sleeping in class</b></li> <li>• <b>Teasing</b></li> <li>• <b>Theft</b></li> <li>• <b>Vandalism</b> <ul style="list-style-type: none"> <li>○ Graffiti</li> </ul> </li> </ul>	<ul style="list-style-type: none"> <li>○ Tardies</li> <li>• <b>Bullying/Harassment/Intimidation and Cyberbullying</b></li> <li>• <b>Dangerous actions/Unsafe behaviors not otherwise listed</b> <ul style="list-style-type: none"> <li>○ Aggression</li> <li>○ Roughhousing</li> <li>○ Touch</li> <li>○ Leaving <i>class</i> without permission</li> <li>○ Repeat offense</li> </ul> </li> <li>• <b>Disrespect</b></li> <li>• <b>Disruptive behavior</b> <ul style="list-style-type: none"> <li>○ Repeat offense</li> </ul> </li> <li>• <b>False reports/False statements</b> <ul style="list-style-type: none"> <li>○ Repeat offense</li> </ul> </li> <li>• <b>Fighting</b></li> <li>• <b>Insubordination/Willful Disobedience</b> <ul style="list-style-type: none"> <li>○ Dress Code Violation</li> <li>○ Repeat offense</li> </ul> </li> <li>• <b>Obscenity/Profanity</b> <ul style="list-style-type: none"> <li>○ Directed at staff</li> <li>○ Repeat offense</li> </ul> </li> <li>• <b>Theft</b> <ul style="list-style-type: none"> <li>○ Repeat offense</li> </ul> </li> </ul>	<ul style="list-style-type: none"> <li>○ Pantsing</li> <li>○ Repeat offense</li> <li>• <b>Dangerous actions/Unsafe behaviors not otherwise listed</b> <ul style="list-style-type: none"> <li>○ Aggression</li> <li>○ Elopement</li> <li>○ Leaving <i>school</i> without permission</li> <li>○ Roughhousing</li> <li>○ Touch</li> <li>○ Repeat offense</li> </ul> </li> <li>• <b>Defiance /Insubordination</b> <ul style="list-style-type: none"> <li>○ Repeat offense</li> </ul> </li> <li>• <b>Disrespect</b> <ul style="list-style-type: none"> <li>○ Gross</li> <li>○ Repeat offense</li> </ul> </li> <li>• <b>Disruptive behavior</b> <ul style="list-style-type: none"> <li>○ Endangerment to others</li> <li>○ Repeat offense</li> </ul> </li> <li>• <b>Fighting</b> <ul style="list-style-type: none"> <li>○ Minor injury</li> <li>○ Threat of injuries to bystanders</li> <li>○ Repeat offense</li> </ul> </li> <li>• <b>Insubordination/Willful disobedience</b> <ul style="list-style-type: none"> <li>○ Repeat offense</li> </ul> </li> </ul>	<p><b>Cyberbullying</b></p> <ul style="list-style-type: none"> <li>○ Pantsing</li> <li>○ Sexual in nature</li> <li>○ Recording altercations on a device</li> <li>○ Repeat offense</li> </ul> <ul style="list-style-type: none"> <li>• <b>Dangerous actions/Unsafe behaviors not otherwise listed</b> <ul style="list-style-type: none"> <li>○ Aggression</li> <li>○ Arson</li> <li>○ Elopement</li> <li>○ Leaving group while on school trip/outing</li> <li>○ Leaving <i>campus</i> without permission</li> <li>○ Roughhousing</li> <li>○ Touch</li> <li>○ Disorderly conduct</li> <li>○ Repeat offense</li> </ul> </li> <li>• <b>Disruptive Behavior</b> <ul style="list-style-type: none"> <li>○ Endangerment to others(repeated)</li> <li>○ Repeat offense</li> </ul> </li> <li>• <b>Fighting</b> <ul style="list-style-type: none"> <li>○ Injury of bystanders</li> </ul> </li> </ul>
--	---	--	--

	<ul style="list-style-type: none"> <li>• <b>Trespassing</b></li> <li>• <b>Vandalism</b> <ul style="list-style-type: none"> <li>○ Repeat offense</li> </ul> </li> </ul>	<ul style="list-style-type: none"> <li>• <b>Obscenity/Profanity</b> <ul style="list-style-type: none"> <li>○ Pornography</li> <li>○ Sexual comment</li> <li>○ Repeat offense</li> </ul> </li> <li>• <b>Other Major Offenses</b></li> <li>• <b>Theft</b> <ul style="list-style-type: none"> <li>○ Repeat offense</li> </ul> </li> <li>• <b>Threat of physical attack</b></li> <li>• <b>Tobacco/Vape/E-Cigarettes</b></li> <li>• <b>Vandalism</b> <ul style="list-style-type: none"> <li>○ Minor Damage</li> <li>○ Repeat offense</li> </ul> </li> </ul>	<ul style="list-style-type: none"> <li>○ Premeditated</li> <li>○ Resulting in serious injury</li> <li>○ Repeat offense</li> <li>• <b>Illicit Drugs</b> <ul style="list-style-type: none"> <li>○ Possession/under influence</li> <li>○ Repeat offense</li> </ul> </li> <li>• <b>Insubordination/Willful disobedience</b> <ul style="list-style-type: none"> <li>○ Repeat offense</li> </ul> </li> <li>• <b>Obscenity/Profanity</b> <ul style="list-style-type: none"> <li>○ Pornography (distribute)</li> <li>○ Repeat offense</li> </ul> </li> <li>• <b>Other Major Offenses</b> <ul style="list-style-type: none"> <li>○ Breaking/ entering</li> <li>○ Trespassing</li> <li>○ Repeat offense</li> </ul> </li> <li>• <b>Rape/Attempted Rape</b></li> <li>• <b>Sexual Assault</b></li> <li>• <b>Theft</b> <ul style="list-style-type: none"> <li>○ Repeat offense</li> </ul> </li> <li>• <b>Threat of physical attack</b></li> <li>• <b>Tobacco/Vape/E-Cigarettes</b> <ul style="list-style-type: none"> <li>○ Repeat offense</li> </ul> </li> <li>• <b>Vandalism</b> <ul style="list-style-type: none"> <li>○ Major damage (&gt;\$500)</li> <li>○ Repeat offense</li> </ul> </li> </ul>
--	--	--	---

Consequences	Consequences	Consequences	Consequences
<b>Minor Referrals Within Reporting Period</b> <ul style="list-style-type: none"> <li>• 4 Minors → Lunch detention</li> <li>• 8 minor referrals → ISS</li> <li>• 12 minor referrals → OSS</li> </ul> <p>Not reporting for detention/ISS will result in more severe consequences.</p>	<ul style="list-style-type: none"> <li>• Parent/Guardian Contact</li> <li>• Detention</li> <li>• In School Suspension</li> <li>• Out of school suspension</li> </ul>	<ul style="list-style-type: none"> <li>• Parent/Guardian Contact</li> <li>• In School Suspension</li> <li>• Out of School Suspension</li> <li>• Referral to CAMP/BHS cessation courses</li> <li>• Referral to law enforcement</li> </ul>	<ul style="list-style-type: none"> <li>• Parent/Guardian Contact</li> <li>• Minimum of 2 days Out of School Suspension</li> <li>• Referral to law enforcement</li> </ul>
<b>Tardies: Arriving to class after the bell</b> <ul style="list-style-type: none"> <li>• Students who enter class up to 5 minutes after the bell will be marked as tardy (T);</li> <li>• After 5 minutes: HS students will report to the office; MS students will be referred to administration.</li> </ul>			
<b>Skipping</b> <ul style="list-style-type: none"> <li>• A student who is considered on campus, but has willfully missed an inordinate amount of the regular class period(s) to which he/she was assigned, or who has traveled outside of his/her assigned classroom space without first obtaining school permission is documented as skipping. All instances of skipping class are subject to administrative review and behavior consequences, depending on frequency and severity.</li> </ul>			
<b>Possession of a deadly weapon other than a firearm including a knife:</b> <ul style="list-style-type: none"> <li>• Required 30 day out-of-school suspension</li> <li>• Modifications through Superintendent on a case-by-case basis <a href="#">BP 5131.7</a></li> </ul>			
<b>Possession of a firearm:</b> <ul style="list-style-type: none"> <li>• Required 30 day out-of-school suspension with recommendation to Superintendent for a one calendar year expulsion.</li> <li>• Modifications through the Superintendent on a case- by-case basis <a href="#">BP 5131.7</a></li> </ul>			
<b>Long-term Suspension and Expulsion:</b>			

Chronic or severe offenses may result in long-term suspension or expulsion. Actions on school property that threaten the safety and welfare of the school can warrant long-term suspension and/or a recommendation for expulsion. These include but are not limited to: assault of a staff member, possession of drugs/alcohol with the intent to distribute, sex/sexual assault, terroristic threats, and possession of weapons.

## **INTERNET SAFETY AND USAGE AGREEMENT**

*All students are required to read, sign and abide by the Internet Safety and Usage Agreement.  
Violation of this agreement will result in the following consequences\*:*

- 1st offense\*: suspension of use for 1 week;
- 2nd offense\*: suspension of use for 2 weeks;
- 3rd offense: suspension of use for 4 weeks;
- 4th offense: suspension of use for the semester;
- 5th offense: suspension of use for the remainder of the school year.

*\* Inappropriate usage deemed extremely severe can result in moving directly to the 5th offense and suspension of privileges for one year. Offenses are subject to administrative review and approval. ([AR 6161.4](#))*

## STUDENTS RIGHTS & RESPONSIBILITIES

**Introduction:** As a student, your rights and responsibilities are as follows:

All district personnel have the right and responsibility to intervene when students engage in actions that are contrary to school, district, local, state or federal regulations and guidelines. All students have the right to appeal any decisions or action from a higher authority. This is called “**due process**.” See Due Process section below.

### **Freedom of Speech/Expression** (AR 5145.2 (a))

Students are prohibited from making any expressions or distributing or posting any materials which are obscene, libelous or slanderous, or which demonstrably incite students to commit unlawful acts on school premises, violate school rules, or substantially disrupt the school's orderly operation.

### **Freedom to Publish**

Generally the restrictions and regulations governing responsible journalism, as defined by the American Society of Newspaper Editors, should be applied to NBHS student publications with the clear understanding that school officials have the authority, indeed the duty, to provide for an ordered educational atmosphere free from constant turmoil and distraction.

## DUE PROCESS

All students have the right to appeal any decision or action from a higher authority. This is called “due process.” Along with this comes a prescribed complaint procedure in which you can count on a fair hearing and opportunity to voice your side of the story.

**Procedures**--Steps or procedures to be followed by all parties involved in a complaint regarding credit, scheduling or staff/student relationships, including classroom discipline and attendance:

1. All complaints must be instituted within five (5) school days of the action being grieved. The complaint may be made on the form available in the NBHS office. Assistance in completing the form is available. The involved staff member, parent/guardian and student should confer in an attempt to solve the problem.
2. If the above conference does not solve the problem, the person with the complaint will request a conference with the administration.
3. If a solution is still not acceptable, the complaint will be submitted to the Grievance Committee (to be formed when needed). After receipt of the written complaint, the Grievance Committee will then schedule a meeting between the grievant and the respondent in order to ascertain all the facts and arrive at a conclusion and a recommended solution. The decision of the Grievance Committee will be rendered in writing to both parties and the administrator within four (4) school days after the hearing has been completed.
4. Either party may appeal the Grievance Committee decision to the principal, which will review the committee's decision and make a decision in a timely manner.

## GLOSSARY

Term	Definition	Expected Behavior
<b>Academic Misconduct/Cheating</b>	Plagiarism or failure to correctly attribute sources; use of internet resources to gather information to submit as one's own work; submitting other(s) work as one's own; cheating in the form of using unauthorized assistance such as notes, verbal or physical exchange, electronic messages or any behavior which results in a higher grade than what the student would have earned without such assistance.	Create products, earn grades, and cite resources that truthfully represent personal achievement
<b>Aggression</b>	For the purposes of this Behavior rubric, "aggression" refers to behaviors that may harm or present danger directly or indirectly. The behaviors may be physical or verbal and the harm may be physical or psychological. The aggression may involve the use of technology (social media sites, texting, the Internet). Aggressive behaviors are negative and unwanted actions such as name calling, stereotyping, labeling, pushing, shoving, tripping, threatening, excluding (spreading rumors, telling others not to be friends with someone), retaliating, and intimidating.	Display behavior that supports the visual, verbal, and psychological differences inherent in a diverse population
<b>Alcohol/Tobacco</b>	Use, possession, or distribution of tobacco or alcohol on school district property or at school-sponsored events; includes being intoxicated at school, school-sponsored events, and on school-sponsored transportation	Practice healthful and safe activities
<b>Arson</b>	To unlawfully and intentionally damage, or attempt to damage, any real or personal property by fire or incendiary device	Support safety for all persons and properties
<b>Battery</b>	Touching or striking of another person against his/her will or intentionally using bodily harm to an individual; includes an individual physically attacking or beating up another individual, an attack with a weapon, or physically placing or mailing a bomb, regardless of whether the bomb explodes.	Support a safe environment for all
<b>Breaking and Entering</b>	The unlawful entry or attempted entry into a NPS building or other structure	Support a safe and secure environment for all

<b>Bullying</b>	Intentional written, oral, or physical act, when the act is undertaken with the intent of threatening, intimidating, harassing, or frightening the student, and physically harms the student or damages the student's property has the effect of substantially interfering with the student's education is so severe, persistent, or pervasive that it creates an intimidating or threatening educational environment has the effect of substantially disrupting the orderly operation of the school; or there is a power differential between the students involved. Includes hazing and cyber-bullying	Demonstrate positive character traits and values and conduct themselves in a civil and respectful manner in order to promote harmonious and courteous relations in the school environment
<b>Burglary</b>	The unlawful entry or attempted entry into a NPS building or other structure with the intent to unlawfully take property	Support a safe and secure environment for all
<b>Defiance/Insubordination</b>	Refusal to follow "reasonable" directions of a district staff member. that are intended to support a positive, safe, and orderly learning environment	Follow directions given by school district staff
<b>Detention (Lunch/After School)</b>	An administratively imposed consequence requiring a student to remain in a designated place either during lunch or after school. Students assigned a lunch detention will be required to wait at the end of the lunch line and then be escorted to the appropriate room. Students assigned to after school detention will report at a designated time and room after school ends for the day.	
<b>Disorderly Conduct</b>	Any act which substantially disrupts the orderly conduct of a school function or learning environment; or poses a threat to the safety, and/or welfare of others (ex. pulling the fire alarm)	Support the learning environment
<b>Disrespect</b>	Behaviors such as inappropriate language (profanity, blaming, complaining, "put-downs"), "tone-of-voice", or body language that indicate disregard for the school, district staff or students	Treat people respectfully (ex. listen, care, trust, support, negotiate, acknowledge, accept, contribute)
<b>Dress Code Violation</b>	Violation of school dress policy includes individual choices of clothing and grooming styles that present a health or safety hazard or a distraction that would interfere with the educational process. Students are prohibited from wearing clothing that allows undergarments or private body parts to be visible. Students are also prohibited from wearing clothing that is imprinted with profane language or promotes drugs/alcohol/tobacco. Clothing which is gang related, carries slogans, logos, or pictures or a sexual, racist, or abusive nature is also prohibited.	Give proper attention to personal cleanliness and to wear clothes that are suitable for the school activities in which they participate

<b>Drugs</b>	Use, possession, purchase, manufacture, sale or distribution of marijuana, other illegal drugs or inhalants, or other noxious substances; includes distribution, manufacture or sale of drug paraphernalia and imitations of illegal drugs; includes off-campus use and subsequently being under the influence while on district property or at a district function	Practice healthy and safe activities
<b>Expulsion</b>	The denial of the right of school attendance, either from a specific school or from the District, for an indefinite period of time. No student shall be expelled unless other means of correction have failed or would not be adequate in bringing about proper conduct. In addition, the matter of an expelled student's further education shall be referred to the appropriate authority.	
<b>Fighting/Mutual Altercation</b>	Mutual participation in physical violence against a person or persons	Support a safe environment for all
<b>Harassment/Intimidation</b>	<p>Intentional written, oral, or physical act, when the act is undertaken with the intent of threatening, intimidating, harassing, or frightening the student, and</p> <ul style="list-style-type: none"> <li>· physically harms the student or damages the student's property</li> <li>· has the effect of substantially interfering with the student's education</li> <li>· is so severe, persistent, or pervasive that it creates an intimidating or threatening educational environment</li> <li>· has the effect of substantially disrupting the orderly operation of the school; or</li> <li>· there is a power differential between the students involved</li> </ul> <p>Includes hazing and cyber-bullying</p>	Demonstrate positive character traits and values and conduct themselves in a civil and respectful manner in order to promote harmonious and courteous relations in the school environment
<b>In-School Suspension</b>	The intent of in-school suspension is twofold; the first is to isolate the student from the normal social aspect of school while allowing for academic pursuit. The second is restorative and encourages student reflection on their actions including recognizing their culpability and identifying more appropriate choices and strategies for conducting themselves.	
<b>Inappropriate use of Materials</b>	Using materials in ways other than intended by the teacher that are disruptive to the learning process	Use materials appropriately
<b>Inappropriate use or Possession of Electronics</b>	Possession of banned electronics. Inappropriate use of electronics, including; using at inappropriate times, used in an off-task, rude, or distracting manner.	Use music/video players/recorders, laptops, cell phones, or the like outside of instructional time unless instructed otherwise by a staff member
<b>Inappropriate Behavior</b>	Any behavior that is unsafe or disrupts the learning atmosphere of the building such as throwing objects, running, wrestling, chasing, playing "keep-away", and hiding	Engage in behavior that supports the educational environment
<b>Inappropriate Language</b>	Offensive language including but not limited to swearing	Use respectful, appropriate language



<b>Larceny</b>	The unlawful taking, carrying, leading or riding away with property of another person without threat, violence or bodily harm; includes pocket picking, purse or backpack snatching, theft from a building, theft from a motor vehicle or motor vehicle parts or accessories, theft of bicycles, theft from a machine or device which is operated or activated by the use of a coin	Respect the property of others and support a safe and secure environment for all
<b>Leaving School Without Permission</b>	Exiting school grounds without school staff and/or parental knowledge and permission	Be present for all classes
<b>Natural Consequences</b>	Natural consequences are disciplinary consequences designed to fit the infraction. Examples of natural consequences include painting over graffiti, campus cleanup for littering, written apology for rude behavior, etc.	
<b>Other Major Offenses</b>	Including but not limited to bribery, fraud, physical assault, verbal abuse, stalking, racial slurs, embezzlement, gambling, forgery, gang related activity, hazing, physical initiation, extortion/blackmail, or any other action not included in any other severe incident category	Practice activities that support the learning intended by the design of the educational system
<b>Out-of-School Suspension (OSS)</b>	If the discipline designee determines that the student will not benefit from placement in ISS or that his/her presence on school property is detrimental to the health, welfare or safety of other students, he/she may be sent home from school for a period of suspension. Unless the student poses an immediate or continuing threat to person(s) or property or the behavior is a serious disruption to the academic process, removal from school will begin the school day following the offense. During OSS, the student may not be in any Nome school building, on any school campus, or at any school-sponsored program or activity.	
<b>Physical Altercation</b>	Participation in physical violence against a person	Support a safe and secure environment for all
<b>Sexual Battery</b>	Physical contact done forcibly or against a person's will or where the victim is incapable of giving consent because of his/her youth and/or mental incapacity; includes rape, fondling, indecent liberties, child molestation, and sodomy. Sexual intercourse, sexual contact or other unlawful behavior intended to result in sexual gratification without force or threat of force and where the victim(s) is capable of giving consent; includes indecent exposure (exposure of private body parts to the sight of another person in a public place) and obscenity (conduct which by community standards is deemed to corrupt public morals by its indecency and/or lewdness such as phone calls or other communication; and	Support a safe environment for all

	unlawful manufacture, publishing, selling, buying or possessing materials, such as literature or photographs.	
<b>Sexual Harassment</b>	To create or allow to exist an atmosphere of sexual harassment; defined as deliberate, repeated and unsolicited physical actions, gestures, or verbal or written comments of a sexual nature; when such conduct has the purpose or effect of interfering with a student's academic performance or creating an intimidating, hostile or offensive learning environment	Support a safe and supportive environment for all
<b>Theft</b>	When a student takes anything that does not belong to him/her	Respect the property of others
<b>Threats</b>	Physical, verbal, written, or electronic action which immediately creates fear of harm, without displaying a weapon and without subjecting the victim to actual physical attack.	Communicate frustration and/or anger in a respectful and non-threatening manner
<b>Trespassing</b>	Entering onto school district property after being notified that one is not allowed on the property. Student presence on school property at any time during a truancy, suspension or expulsion is trespassing	Support a safe and secure environment for all
<b>Vandalism/Graffiti</b>	The negligent, willful, or unlawful damaging of any district-owned real or personal property, including graffiti when damage is temporary or there is minimal cost to repair	Respect the property of others and support a safe and secure environment for all
<b>Willful Disobedience</b>	Violation of policies or procedures such as those written in the Student Handbook, Course Syllabus, or verbally explained by a district staff member	Comply with school policies and procedures
<b>Weapon</b>	Firearms: A firearm is any weapon which will, is designed, or may readily be converted to expel a projectile by the action of an explosive; the frame or receiver of any such weapon; any firearm muffler or firearm silencer; or any machine gun. Other Weapons: The possession, use or intention to use any instrument or object to inflict harm on or intimidate another person.	

## NBMHS BELL SCHEDULE

### Nome-Beltz Middle High School 2024-2025 Bell Schedule



#### HIGH SCHOOL

##### *Regular Day*

1st	8:30-9:20
2nd	9:25-10:15
3rd	10:20-11:10
4th	11:15-12:05
LUNCH →	12:05-12:35
5th	12:40-1:30
6th	1:35-2:25
7th	2:30-3:20

##### *Early Release*

1st	8:30-9:10
2nd	9:15-9:55
3rd	10:00-10:40
4th	10:45-11:25
LUNCH →	11:25-11:55
5th	12:00-12:40
6th	12:45-1:25
7th	1:30-2:10

##### *Assembly Schedule*

1st	8:30-9:10
2nd	9:15-9:55
3rd	10:00-10:40
4th	10:45-11:25
LUNCH →	11:25-11:55
5th	12:00-12:45
6th	12:50-1:35
7th	1:40-2:25
Assembly	2:30-3:20

#### MIDDLE SCHOOL

##### *Regular Day*

Advisory	9:10-9:25
1st	9:25-10:15
2nd	10:20-11:10
3rd	11:15-12:05
4th	12:10-1:00
LUNCH →	1:00-1:30
5th	1:35-2:25
6th	2:30-3:20
7th	3:25-4:10

##### *Early Release*

Advisory	9:10-9:15
1st	9:15-9:55
2nd	10:00-10:40
3rd	10:45-11:25
4th	11:30-12:10
LUNCH →	12:10-12:40
5th	12:45-1:25
6th	1:30-2:10
7th	2:15-2:50

##### *Assembly Schedule*

Advisory	9:10-9:15
1st	9:15-9:55
2nd	10:00-10:40
3rd	10:45-11:25
4th	11:30-12:10
LUNCH →	12:10-12:45
5th	12:50-1:35
6th	1:40-2:25
7th	2:30-3:20
Assembly	3:20-4:10



## STUDENT & PARENT/GUARDIAN CONTRACT

I have read the Student Handbook and understand the behavior expectations, consequences, and policies of Nome-Beltz Middle High School. I understand that if I have questions, I can ask teachers, counselors, staff, and administration for assistance. I understand that if I lose my copy, I may receive another from the Main Office or access the Handbook through the district/school website.

Please tear off and return this paper to your English/Language Arts teacher by: **9/12/2025**

This will count for a homework assignment in PowerSchool!

Student Name (please print): \_\_\_\_\_

Student Signature: \_\_\_\_\_ Date: \_\_\_\_\_

Parent/ Guardian Name (please print): \_\_\_\_\_

Parent/ Guardian Signature: \_\_\_\_\_

**#nanooksknow #nanookpower**

