

Pathway Toward Equity

Mt. Hood Community College Strategic Plan

MHCC Vice President Student Development John Hamblin

Board of Education Director Diane McKeel

Board of Education Director Diane Noriega



An aerial photograph of a college campus. The scene is filled with lush green trees, some with yellowing leaves, suggesting an autumn setting. A wide, paved walkway runs through the center, where several students are walking. In the background, a building with a blue wall is visible. The overall atmosphere is bright and active.

3rd largest community college

18,500 students

#4 college for quality and affordability

Highlights

Equity-Minded

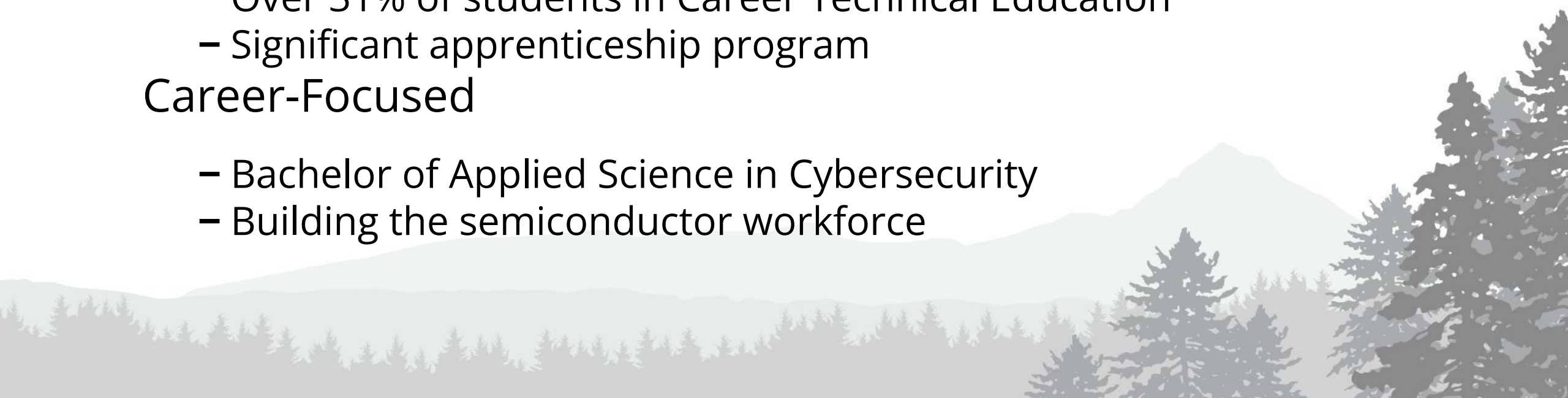
- Over 40% students of color
- Significant immigrant and refugee population

Student-Centered

- Over 31% of students in Career Technical Education
- Significant apprenticeship program

Career-Focused

- Bachelor of Applied Science in Cybersecurity
- Building the semiconductor workforce



Mt. Hood Community College Strategic Plan



THE PATHWAY TOWARD
EQUITY

MT. HOOD COMMUNITY COLLEGE

The Process and Desired Outcomes

Input and feedback came from community members, students, employees, partners and stakeholders

- 1.** To create a transparent process that engaged all Mt. Hood Community College constituencies.
- 2.** Have a final product that was an expression of our values and who we are as a college community.
- 3.** Develop an actionable plan with tangible, specific goals to drive all other planning, including annual budgets.

What We Heard

Top strengths and weaknesses as identified by survey members

Strengths:

1. Academic Programs
2. Financial Aid
3. Location

Weaknesses:

1. Availability of Classes
2. Technology



Opportunities

8 opportunities for the college as identified by survey members

1. Built environment does not offer many opportunities for social gathering and interaction
2. Decision-making is not always transparent
3. Difficult to track student success
4. Many students are unaware of the services available to help them succeed
5. Pathways from K-12 to MHCC and beyond are not clearly spelled out
6. Business partnerships vary in strength
7. The needs of a highly diverse student body are not fully addressed
8. Community is not aware of the wide range of MHCC programs and Services

The Plan

Equity Statement

At Mt. Hood Community College we hold ourselves accountable to align our systems, policies, practices, and resource allocations to strategically and purposefully advance equity. We recognize the harm done to historically excluded people. We work towards a future where all people across the spectrum of difference thrive at Mt. Hood Community College. We seek to provide every person within our community the tools to be successful. We actively design equitable systems to promote fairness and justice.

Mt. Hood Community College prioritizes equity and acknowledges the importance of the ongoing and intentional work to interrupt oppression and remove barriers that perpetuate inequity. We strive to become an organization that demonstrates equity in concept, practice, and outcomes, where all people are valued and feel a sense of belonging.

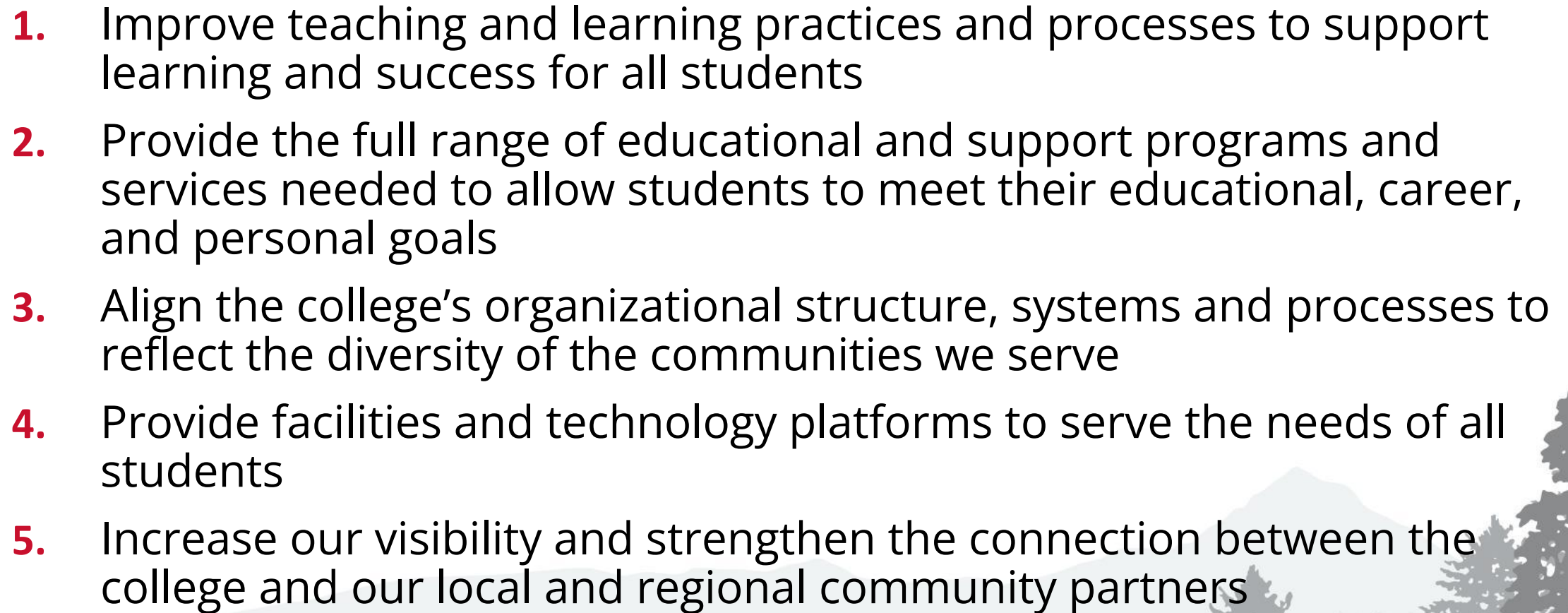
Vision Statement

Mt. Hood Community College is valued as a cornerstone of the community for affordability, equitable student success, innovation, and financial stewardship.

Mission Statement

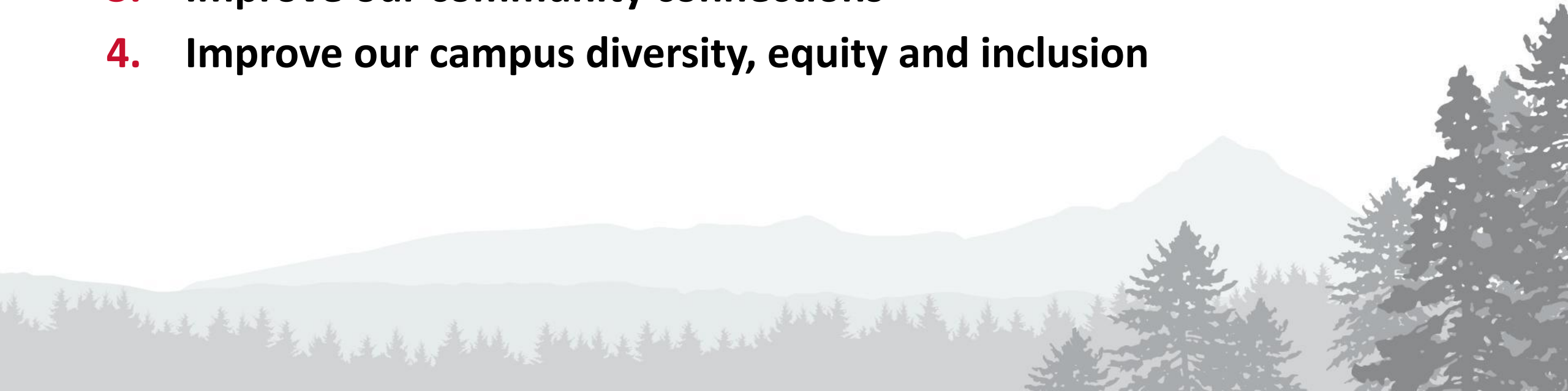
With a commitment to being inclusive, Mt. Hood Community College offers a full range of education and training in a supportive environment to advance personal and professional growth. We are a community hub for cultural, economic, recreational, and intellectual enrichment.

Goals

1. Improve teaching and learning practices and processes to support learning and success for all students
 2. Provide the full range of educational and support programs and services needed to allow students to meet their educational, career, and personal goals
 3. Align the college's organizational structure, systems and processes to reflect the diversity of the communities we serve
 4. Provide facilities and technology platforms to serve the needs of all students
 5. Increase our visibility and strengthen the connection between the college and our local and regional community partners
- 
- A decorative background image showing a silhouette of a forest of evergreen trees in the foreground and a range of mountains in the distance under a light sky.

Accountability

- 1. Improve student success, for all students regardless of race, age, gender, or income**
- 2. Increase number of students meeting core learning outcomes, for all students regardless of race, age, gender, or income**
- 3. Improve our community connections**
- 4. Improve our campus diversity, equity and inclusion**



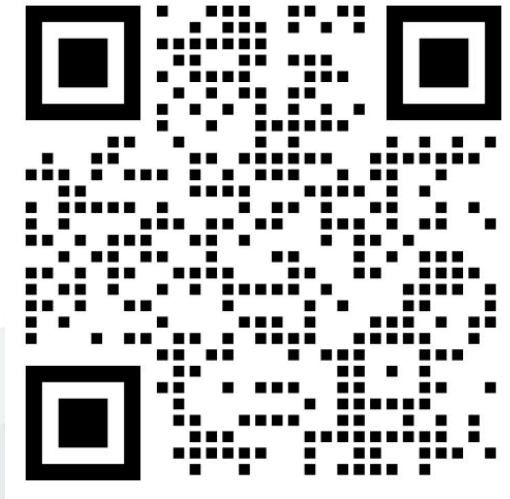
Learn More

Strategic Plan:

[https://www.mhcc.edu/docs/MT-Hood CC StratPlan FINAL B.pdf](https://www.mhcc.edu/docs/MT-Hood%20CC%20StratPlan%20FINAL%20B.pdf)

Environmental Scan:

[https://www.mhcc.edu/docs/Mt-Hood-CC EnviroScan-Final-Draft A.pdf](https://www.mhcc.edu/docs/Mt-Hood-CC%20EnviroScan-Final-Draft%20A.pdf)



Questions?



MT. HOOD
COMMUNITY COLLEGE