



*Wharton County
Junior College*



Monthly Financial Reports

December 2016

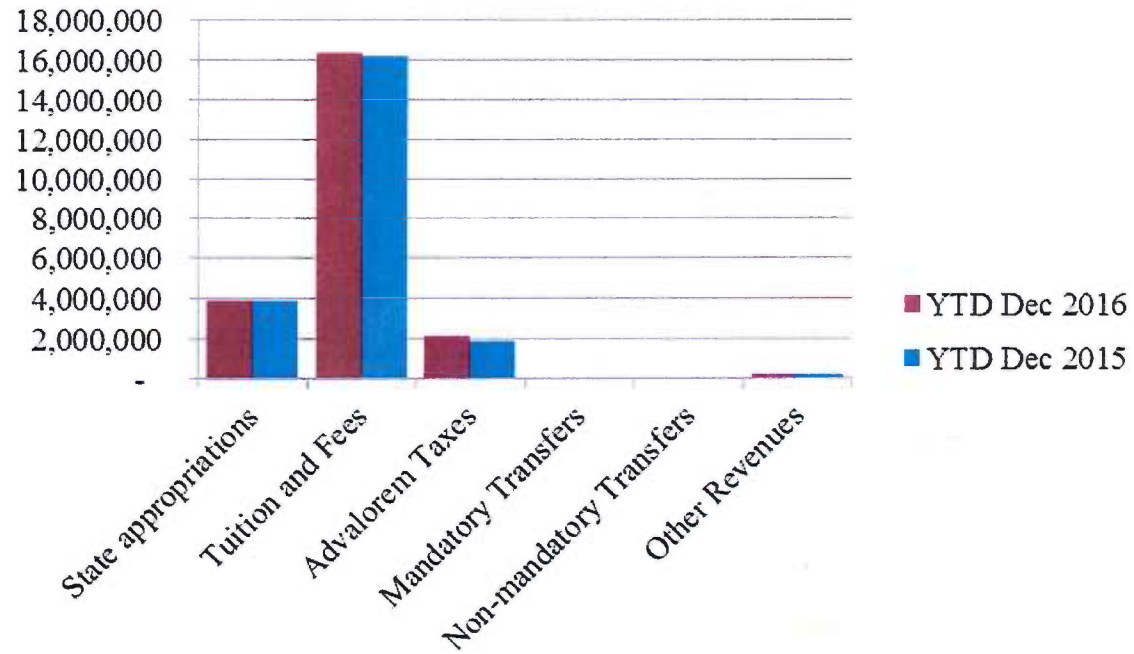
Revenue & Expenditure Summary

	FISCAL 2017				FISCAL 2016			
	Current Month	Y-T-D ACTUAL	Budget	% of Budget	Y-T-D ACTUAL	Budget	% of Budget	% OF PRIOR YR ACTUAL
Fund 1000								
Revenues:								
State appropriations	\$864,125	\$3,911,307	\$ 9,112,077	42.92%	\$3,915,904	\$ 9,112,077	42.97%	100%
Tuition and Fees	1,362,417	16,351,301	21,903,163	74.65%	16,207,952	21,244,443	76.29%	101%
Advalorem Taxes	1,692,419	2,099,363	5,800,669	36.19%	1,861,153	5,238,000	35.53%	113%
Mandatory Transfers	-	-	1,372,261	0.00%	-	302,500	0.00%	0%
Non-mandatory Transfers	-	-	252,602	0.00%	-	209,111	0.00%	0%
Other Revenues	34,232	169,128	448,963	37.67%	204,813	443,101	46.22%	83%
Total Revenues	3,953,193	22,531,099	38,889,735	57.94%	22,189,822	36,549,232	60.71%	102%
Expenditures:								
Salaries	1,815,571	7,147,822	22,315,219	32.03%	6,919,412	21,356,446	32.40%	103%
Employee Benefits	398,484	1,424,982	5,234,612	27.22%	1,349,395	4,940,274	27.31%	106%
Capital Expenditures	39,409	99,482	461,237	-	20,103	45,103	-	0%
Mandatory Transfers	-	179,429	361,800	49.59%	25,429	357,300	7.12%	706%
Non-mandatory Transfers	-	-	-	-	-	-	-	0%
Other Expenditures	569,109	2,933,005	10,516,867	27.89%	2,844,690	9,850,109	28.88%	103%
Total expenditures	2,822,573	11,784,720	38,889,735	30.30%	11,159,029	36,549,232	30.53%	106%
Net increase/ (decrease) in net assets	\$ 1,130,620	\$ 10,746,379			\$ 11,030,793			
Less Outstanding encumbrances		(1,616,347)			(1,244,052)			
Net increase less encumbrances		\$ 9,130,032			\$ 9,786,741			

* Note: Net student receivables in the amount of \$4,643,513.89 are currently outstanding. Tuition and fees are subject to collection in future periods.

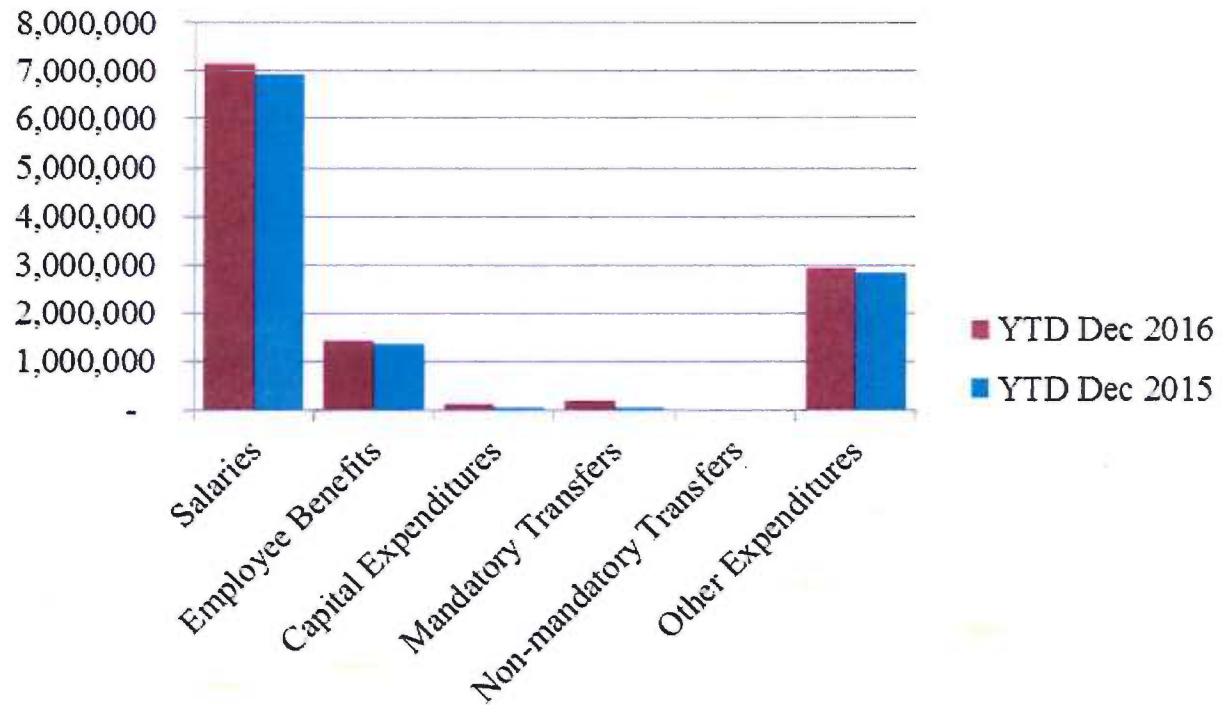


Year to Date Revenues



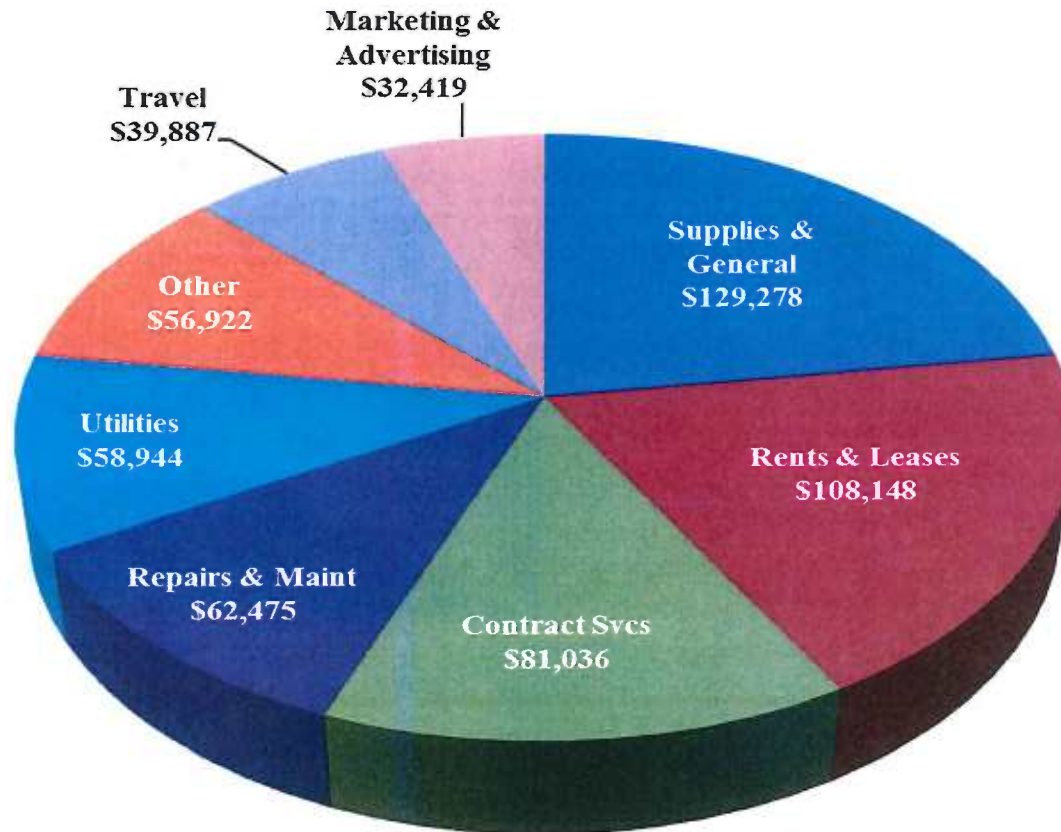


Year to Date Expenses





Other Expenses for December



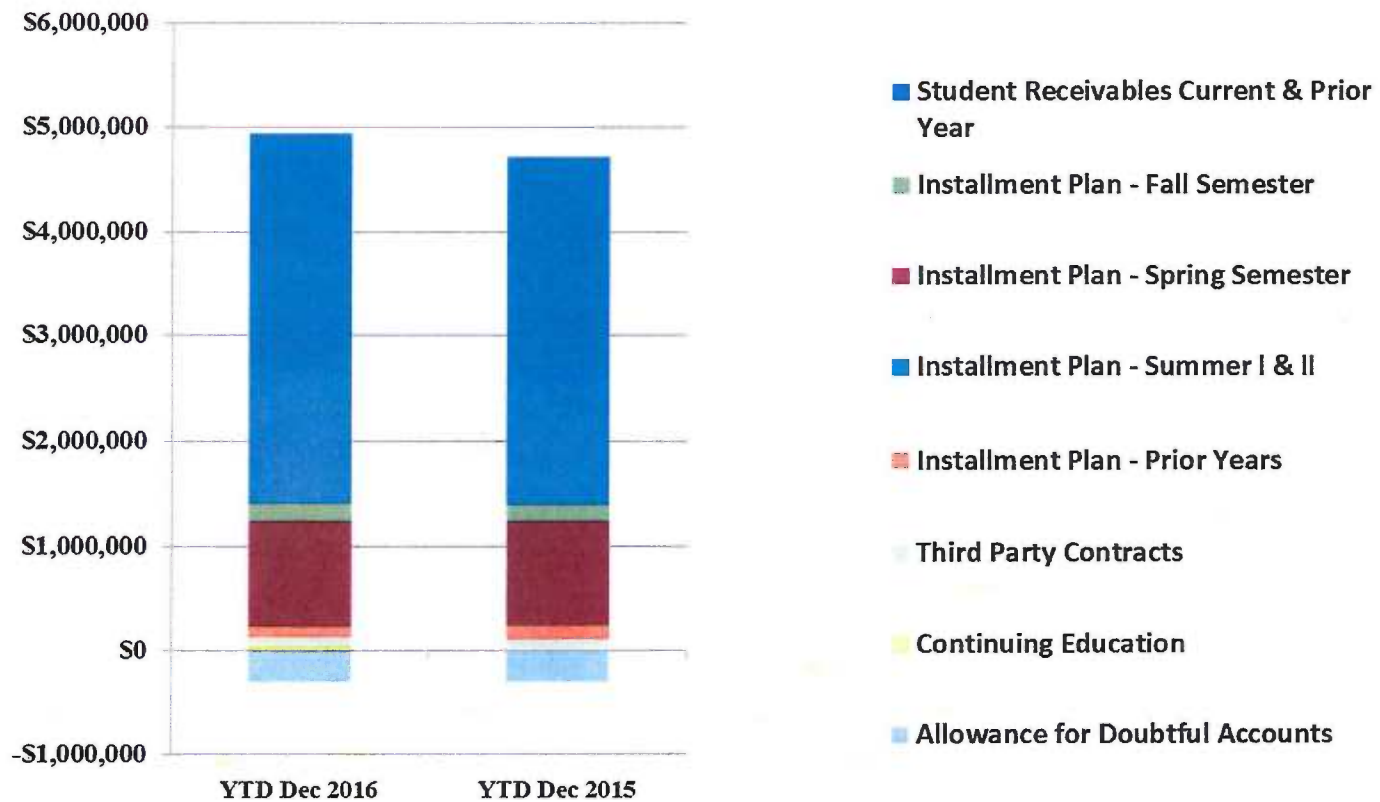


Analysis of Student Receivable Outstanding As of December 31, 2016

	2017	2016
Student Receivables Current & Prior Year	\$ 3,521,346.19	\$ 3,313,314.86
Installment Plan Receivable Due Fall Semester	170,867.35	\$ 157,031.98
Installment Plan Receivable Due Spring Semester	1,010,973.10	1,007,890.93
Installment Plan Receivable Summer I & II	0.00	0.00
Installment Plan Receivable Prior Years	\$ 106,503.39	126,530.90
Total Installment Plan Receivable	\$ 1,288,343.84	\$ 1,291,453.81
Third Party Contracts Receivable	\$ 97,941.33	\$ 108,279.85
Continuing Education Receivable	30,429.75	5,890.00
Allowance for Doubtful Accounts	(294,547.22)	(297,742.94)
	<u>\$ 4,643,513.89</u>	<u>\$ 4,421,195.58</u>



AR by Category



COMBINED BALANCE SHEET

(Funds included: GOVERNMENTAL FUND TYPES)

REPORT FGRCOBS
COAS: W
FISCAL YEAR: 17

Wharton County Junior College
Combined Balance Sheet--All Fund Types and Account Groups
December 31, 2016
(With comparative totals for December 31, 2015)
(amounts expressed in dollars)

RUN DATE: 01/10/2017
TIME: 08:56:33 AM
PAGE: 1

Governmental Fund Types

	Auxiliary Enterprise	Restricted Funds	Current Unrestricted	Current Year 2017	Prior Year 2016
ASSETS and OTHER DEBITS:					
ASSETS:					
Cash	311,062	924,551	4,176,913	5,412,526	5,025,475
Cash Investments	699,830	478,074	14,875,063	16,052,967	15,732,762
Accounts Receivable	261,969	5,681	4,657,931	4,925,580	4,703,854
Taxes Receivable		--	349,322	349,322	320,601
Local, St & Fed Agency Receivable		8,274	--	8,274	16,126
Due From Other Funds		--	--		69,380
Prepaid Expense	35,057	--	--	35,057	33,304
Property, Plant & Equipment		--	--		
Deferred Outflows		--	2,267,905	2,267,905	886,346
TOTAL ASSETS AND OTHER DEBITS:	1,307,918	1,416,581	26,327,134	29,051,633	26,787,849
Liabilities, equity and other credits					
LIABILITIES:					
Accounts Payable		17	68,656	68,672	-54,385
Employee Benefits Payable		--	175,069	175,069	173,299
Payroll Taxes Payable		--	--	--	--
Accrued Liabilities		--	--	--	--
Deferred Revenue		446,064	-14,439	431,625	497,204
Long Term Debt		--	--	--	--
Net Pension Liability		--	5,747,658	5,747,658	5,031,677
Deposits Payable	45,785	--	11,378	57,163	52,778
Due To Other Funds		--	--	--	45,594
Scholarships-Designated Donations		82,499	--	82,499	58,253
Scholarships-Non-designated		706,632	--	706,632	94,030
Donatio					
Deferred Inflows		--	2,169,564	2,169,564	1,538,983
TOTAL LIABILITIES:	45,785	1,235,211	8,157,887	9,438,882	7,437,434
EQUITY AND OTHER CREDITS:					
Control Accounts		--	--		
Fund Balances		--	--		
Prior Year Fund Balance		--	7,422,869	7,422,869	7,029,039
Endowment Fund-Original		--	--		
Endowment Fund-Income		--	--		
FB Professional Development		--	--		
FB Salary Equity		--	--		
FB Capital Equipment		--	--		

Wharton County Junior College
 Combined Balance Sheet--All Fund Types and Account Groups
 December 31, 2016
 (With comparative totals for December 31, 2015)
 (amounts expressed in dollars)

Governmental Fund Types

	Auxiliary Enterprise	Restricted Funds	Current Unrestricted	Current Year 2017	Prior Year 2016
EQUITY AND OTHER CREDITS:					
FB Investment Gain And Loss		--	--		
Fund Balance Receivables		--	--		
Reserved-Undesignated		--	--		
FBTC Operating Fund Balance		--	--		
Plant Fund Balance		--	--		
Bond Fund Balance		--	--		
Scholarship		--	--		
Fund Balance-Rounding Diff		--	--		
Fund Balances:					
Reserve for Encumbrance	39,646	28,696	1,616,347	1,684,690	1,509,067
Fund Balance	1,222,487	152,674	9,130,031	10,505,192	10,812,309
Reserve For Operations		--	--		
TOTAL EQUITY AND OTHER CREDITS:	1,262,133	181,370	18,169,247	19,612,750	19,350,415
TOTAL LIABILITIES,	1,307,918	1,416,581	26,327,134	29,051,633	26,787,849
EQUITY AND OTHER CREDITS:					

REPORT FGRCOBS
COAS: W
FISCAL YEAR: 17

Wharton County Junior College
Combined Balance Sheet--All Fund Types and Account Groups
December 31, 2016
(With comparative totals for December 31, 2015)
(amounts expressed in dollars)

RUN DATE: 01/10/2017
TIME: 08:56:33 AM
PAGE: 3

Proprietary Fund Types

	Agency Funds	Current Year 2017	Prior Year 2016
ASSETS and OTHER DEBITS:			
ASSETS:			
Cash	175,355	175,355	168,533
Cash Investments	103,416	103,416	103,045
Accounts Receivable	-	-	-
Taxes Receivable	-	-	-
Local, St & Fed Agency Receivable	-	-	-
Due From Other Funds	-	-	-
Prepaid Expense	-	-	-
Property, Plant & Equipment	-	-	-
Deferred Outflows	-	-	-
TOTAL ASSETS AND OTHER DEBITS:	278,771	278,771	271,577
Liabilities, equity and other credits			
LIABILITIES:			
Accounts Payable	-	-	-
Employee Benefits Payable	-	-	-
Payroll Taxes Payable	-	-	-
Accrued Liabilities	-	-	-
Deferred Revenue	-	-	-
Long Term Debt	-	-	-
Net Pension Liability	-	-	-
Deposits Payable	278,439	278,439	271,357
Due To Other Funds	-	-	-
Scholarships-Designated Donations	-	-	-
Scholarships-Non-designated	-	-	-
Donatio	-	-	-
Deferred Inflows	-	-	-
TOTAL LIABILITIES:	278,439	278,439	271,357
EQUITY AND OTHER CREDITS:			
Control Accounts	332	332	221
Fund Balances	-	-	-
Prior Year Fund Balance	-	-	-
Endowment Fund-Original	-	-	-
Endowment Fund-Income	-	-	-
FB Professional Development	-	-	-
FB Salary Equity	-	-	-
FB Capital Equipment	-	-	-

REPORT FGRCOBS
COAS: W
FISCAL YEAR: 17

Wharton County Junior College
Combined Balance Sheet--All Fund Types and Account Groups
December 31, 2016
(With comparative totals for December 31, 2015)
(amounts expressed in dollars)

RUN DATE: 01/10/2017
TIME: 08:56:33 AM
PAGE: 4

Proprietary Fund Types

Agency Funds	Current Year 2017	Prior Year 2016
<hr/>		
EQUITY AND OTHER CREDITS:		
FB Investment Gain And Loss		
Fund Balance Receivables		
Reserved-Undesignated		
FBTC Operating Fund Balance		
Plant Fund Balance		
Bond Fund Balance		
Scholarship		
Fund Balance-Rounding Diff		
Fund Balances:		
Reserve for Encumbrance		
Fund Balance		
Reserve For Operations		
TOTAL EQUITY AND OTHER CREDITS:	332	221
<hr/>		
TOTAL LIABILITIES,	278,771	271,577
EQUITY AND OTHER CREDITS:	278,771	278,771
<hr/>		

REPORT FGRCOBS
 COAS: W
 FISCAL YEAR: 17

Wharton County Junior College
 Combined Balance Sheet--All Fund Types and Account Groups
 December 31, 2016
 (With comparative totals for December 31, 2015)
 (amounts expressed in dollars)

RUN DATE: 01/10/2017
 TIME: 08:56:33 AM
 PAGE: 5

Fiduciary Fund Types

	Quasi Endowment Fund	Endowment Funds	Current Year 2017	Prior Year 2016
ASSETS and OTHER DEBITS:				
ASSETS:				
Cash		167,180	167,180	697,037
Cash Investments		9,420,805	9,420,805	8,422,275
Accounts Receivable		5,596	5,596	6,427
Taxes Receivable		--	--	--
Local, St & Fed Agency Receivable		--	--	--
Due From Other Funds		--	--	--
Prepaid Expense		--	--	--
Property, Plant & Equipment		--	--	--
Deferred Outflows		--	--	--
TOTAL ASSETS AND OTHER DEBITS:		9,593,582	9,593,582	9,125,738
Liabilities, equity and other credits				
LIABILITIES:				
Accounts Payable		--	--	--
Employee Benefits Payable		--	--	--
Payroll Taxes Payable		--	--	--
Accrued Liabilities		--	--	--
Deferred Revenue		--	--	--
Long Term Debt		--	--	--
Net Pension Liability		--	--	--
Deposits Payable		--	--	--
Due To Other Funds		--	--	23,787
Scholarships-Designated Donations		--	--	--
Scholarships-Non-designated		--	--	--
Donatio				
Deferred Inflows		--	--	--
TOTAL LIABILITIES:				23,787
EQUITY AND OTHER CREDITS:				
Control Accounts		--	--	--
Fund Balances		--	--	--
Prior Year Fund Balance		--	--	--
Endowment Fund-Original		--	--	--
Endowment Fund-Income		--	--	--
FB Professional Development		--	--	--
FB Salary Equity		--	--	--
FB Capital Equipment		--	--	--

REPORT FGRCOBS
COAS: W
FISCAL YEAR: 17

Wharton County Junior College
Combined Balance Sheet--All Fund Types and Account Groups
December 31, 2016
(With comparative totals for December 31, 2015)
(amounts expressed in dollars)

RUN DATE: 01/10/2017
TIME: 08:56:33 AM
PAGE: 6

Fiduciary Fund Types

	Quasi Endowment Fund	Endowment Funds	Current Year 2017	Prior Year 2016
<hr/>				
EQUITY AND OTHER CREDITS:				
FB Investment Gain And Loss		--		
Fund Balance Receivables		--		
Reserved-Undesignated		--		
FBTC Operating Fund Balance		--		
Plant Fund Balance		--		
Bond Fund Balance		--		
Scholarship		--		
Fund Balance-Rounding Diff		--		
Fund Balances:				
Reserve for Encumbrance		--		
Fund Balance		9,593,582	9,593,582	9,101,952
Reserve For Operations		--		
TOTAL EQUITY AND OTHER CREDITS:		9,593,582	9,593,582	9,101,952
<hr/>				
TOTAL LIABILITIES, EQUITY AND OTHER CREDITS:		9,593,582	9,593,582	9,125,738
<hr/>				
=====				

REPORT FGRCOBS
COAS: W
FISCAL YEAR: 17

Wharton County Junior College
Combined Balance Sheet--All Fund Types and Account Groups
December 31, 2016
(With comparative totals for December 31, 2015)
(amounts expressed in dollars)

RUN DATE: 01/10/2017
TIME: 08:56:33 AM
PAGE: 7

Account Groups

	Repair and Replacement	Debt Retirement Bond Fund	Investment in Plant Fund	Unexpended Plant Fund	Current Year 2017	Prior Year 2016
ASSETS and OTHER DEBITS:						
ASSETS:						
Cash	13,174,868	507,500	--	-12,984,480	697,887	1,274,304
Cash Investments	--	--	--	21,105,929	21,105,929	20,361,759
Accounts Receivable	--	--	--	31,255	31,255	26,971
Taxes Receivable	--	--	--	--	--	--
Local, St & Fed Agency Receivable	--	--	--	--	--	--
Due From Other Funds	--	--	--	--	--	--
Prepaid Expense	--	--	--	--	--	--
Property, Plant & Equipment	--	--	24,859,061	--	24,859,061	23,940,144
Deferred Outflows	--	--	--	--	--	--
TOTAL ASSETS AND OTHER DEBITS:	13,174,868	507,500	24,859,061	8,152,704	46,694,132	45,603,178
Liabilities, equity and other credits						
LIABILITIES:						
Accounts Payable	--	--	--	--	--	--
Employee Benefits Payable	--	--	--	--	--	--
Payroll Taxes Payable	--	--	--	--	--	--
Accrued Liabilities	--	--	--	--	--	--
Deferred Revenue	--	--	--	--	--	--
Long Term Debt	--	--	2,294,087	--	2,294,087	2,589,670
Net Pension Liability	--	--	--	--	--	--
Deposits Payable	--	--	--	--	--	--
Due To Other Funds	--	--	--	--	--	--
Scholarships-Designated Donations	--	--	--	--	--	--
Scholarships-Non-designated	--	--	--	--	--	--
Donatio	--	--	--	--	--	--
Deferred Inflows	--	--	--	--	--	--
TOTAL LIABILITIES:			2,294,087		2,294,087	2,589,670
EQUITY AND OTHER CREDITS:						
Control Accounts	--	--	--	--	--	--
Fund Balances	--	--	--	--	--	--
Prior Year Fund Balance	--	--	--	--	--	--
Endowment Fund-Original	--	--	--	--	--	--
Endowment Fund-Income	--	--	--	--	--	--
FB Professional Development	--	--	--	--	--	--
FB Salary Equity	--	--	--	--	--	--
FB Capital Equipment	--	--	16,441,317	--	16,441,317	14,239,051

REPORT FGRCOBS
COAS: W
FISCAL YEAR: 17

Wharton County Junior College
Combined Balance Sheet--All Fund Types and Account Groups
December 31, 2016
(With comparative totals for December 31, 2015)
(amounts expressed in dollars)

RUN DATE: 01/10/2017
TIME: 08:56:33 AM
PAGE: 9

Memorandum Only

	Current Year 2017	Prior Year 2016
ASSETS and OTHER DEBITS:		
ASSETS:		
Cash	6,452,949	7,165,349
Cash Investments	46,683,117	44,619,840
Accounts Receivable	4,962,432	4,737,251
Taxes Receivable	349,322	320,601
Local, St & Fed Agency Receivable	8,275	16,126
Due From Other Funds		69,380
Prepaid Expense	35,057	33,304
Property, Plant & Equipment	24,859,061	23,940,144
Deferred Outflows	2,267,905	886,346
TOTAL ASSETS AND OTHER DEBITS:	85,618,117	81,788,342
Liabilities, equity and other credits		
LIABILITIES:		
Accounts Payable	68,672	-54,385
Employee Benefits Payable	175,069	173,299
Payroll Taxes Payable	-	-
Accrued Liabilities		
Deferred Revenue	431,625	497,204
Long Term Debt	2,294,087	2,589,670
Net Pension Liability	5,747,658	5,031,677
Deposits Payable	335,602	324,135
Due To Other Funds		69,380
Scholarships-Designated Donations	82,499	58,253
Scholarships-Non-designated	706,632	94,030
Donatio		
Deferred Inflows	2,169,564	1,538,983
TOTAL LIABILITIES:	12,011,408	10,322,247
EQUITY AND OTHER CREDITS:		
Control Accounts	332	221
Fund Balances		
Prior Year Fund Balance	7,422,869	7,029,039
Endowment Fund-Original		
Endowment Fund-Income		
FB Professional Development		
FB Salary Equity		
FB Capital Equipment	16,441,317	14,239,051
FB Investment Gain And Loss		
Fund Balance Receivables	-	-
Reserved-Undesignated		
FBTC Operating Fund Balance		

REPORT FGRCOBS
COAS: W
FISCAL YEAR: 17

Wharton County Junior College
Combined Balance Sheet--All Fund Types and Account Groups
December 31, 2016
(With comparative totals for December 31, 2015)
(amounts expressed in dollars)

RUN DATE: 01/10/2017
TIME: 08:56:33 AM
PAGE: 10

Memorandum Only

	Current Year 2017	Prior Year 2016
Plant Fund Balance		
Bond Fund Balance		
Scholarship		
Fund Balance-Rounding Diff	-	
Fund Balances:		
Reserve for Encumbrance	1,684,690	1,509,067
Fund Balance	48,057,502	48,688,717
Reserve For Operations		
TOTAL EQUITY AND OTHER CREDITS:	73,606,709	71,466,095
TOTAL LIABILITIES, EQUITY AND OTHER CREDITS:	85,618,117	81,788,342
	=====	=====

Investments

December 31, 2016

WHARTON COUNTY JUNIOR COLLEGE

INVESTMENT IN TEXPOOL

December 31, 2016

MONTHLY INTEREST RATE .4570%

		AVERAGE	END-OF-		YEAR-TO-
	ACCOUNT	DAILY	MONTH	MONTHLY	DATE
FUND	NUMBER	BALANCE	BALANCE	EARNINGS	EARNINGS
UNRESTRICTED	2411100002	\$6,730,245.40	\$6,921,368.14	\$ 2,628.26	\$10,881.61
AUXILIARY	2411100001	699,576.09	\$699,830.13	271.56	946.28
RESTRICTED	2411100017	122,471.16	128,827.40	47.70	144.65
SCHOLARSHIP	2411100019	349,118.52	349,247.01	137.35	586.53
ENDOWMENT	2411100014	804,892.02	692,283.92	315.48	1,465.00
PLANT	2411100015	2,217,180.36	2,217,985.45	860.61	3,431.06
AGENCY	2411100016	103,377.97	103,415.50	40.12	139.79
			\$11,112,957.55	\$4,301.08	\$17,594.92

**WHARTON COUNTY JUNIOR COLLEGE
HISTORY OF TEXPOOL INTEREST RATES**

<u>MONTH</u>	<u>2002</u>	<u>2003</u>	<u>2004</u>	<u>2005</u>	<u>2006</u>	<u>2007</u>	<u>2008</u>	<u>2009</u>	<u>2010</u>	<u>2011</u>	<u>2012</u>	<u>2013</u>	<u>2014</u>	<u>2015</u>	<u>2016</u>
JANUARY	2.0548%	1.3891%	1.0187%	2.2325%	4.2714%	5.2718%	4.2460%	0.9529%	0.1630%	0.1587%	0.0875%	0.0986%	0.0273%	0.0465%	0.2674%
FEBRUARY	1.8577%	1.3472%	1.0270%	2.4406%	4.4833%	5.2802%	3.4374%	0.6690%	0.1512%	0.1470%	0.0903%	0.0935%	0.0283%	0.0441%	0.3010%
MARCH	1.7815%	1.3298%	1.0280%	2.5708%	4.5697%	5.2933%	2.9723%	0.5788%	0.1577%	0.1461%	0.1150%	0.1047%	0.0299%	0.0480%	0.3273%
APRIL	1.8341%	1.2629%	1.0162%	2.7591%	4.7397%	5.2738%	2.4471%	0.4762%	0.1662%	0.1122%	0.1110%	0.1022%	0.0336%	0.0524%	0.3380%
MAY	1.8223%	1.2326%	1.0240%	2.9563%	4.9024%	5.2568%	2.2812%	0.4326%	0.1935%	0.0838%	0.1246%	0.0715%	0.0244%	0.0553%	0.3399%
JUNE	1.8324%	1.1973%	1.0623%	3.0583%	5.0021%	5.2884%	2.2635%	0.3939%	0.2078%	0.0793%	0.1395%	0.0576%	0.0284%	0.0575%	0.3633%
JULY	1.8936%	1.0604%	1.2557%	3.2577%	5.2258%	5.2760%	2.2460%	0.3384%	0.2259%	0.0665%	0.1316%	0.0531%	0.0313%	0.0630%	0.3690%
AUGUST	1.8709%	1.0408%	1.4121%	3.4512%	5.2355%	5.2473%	2.2878%	0.3380%	0.2279%	0.0851%	0.1313%	0.0437%	0.0353%	0.0716%	0.3737%
SEPTEMBER	1.8693%	1.0308%	1.5424%	3.6028%	5.2648%	5.1330%	2.4068%	0.2822%	0.2165%	0.0929%	0.1572%	0.0394%	0.0333%	0.0850%	0.3799%
OCTOBER	1.8609%	1.0302%	1.7129%	3.7823%	5.2831%	4.9280%	1.9762%	0.2095%	0.2036%	0.0839%	0.1657%	0.0498%	0.0268%	0.0966%	0.3828%
NOVEMBER	1.5622%	1.0344%	1.8491%	3.9888%	5.2780%	4.7144%	1.8207%	0.2112%	0.1917%	0.1033%	0.1564%	0.0446%	0.0286%	0.1105%	0.3987%
DECEMBER	1.4629%	1.0327%	2.0685%	4.1676%	5.2859%	4.5565%	1.4855%	0.2090%	0.1587%	0.0871%	0.1506%	0.0372%	0.0418%	0.1863%	0.4570%

INVESTMENT REPORT

1ST QUARTER 2017

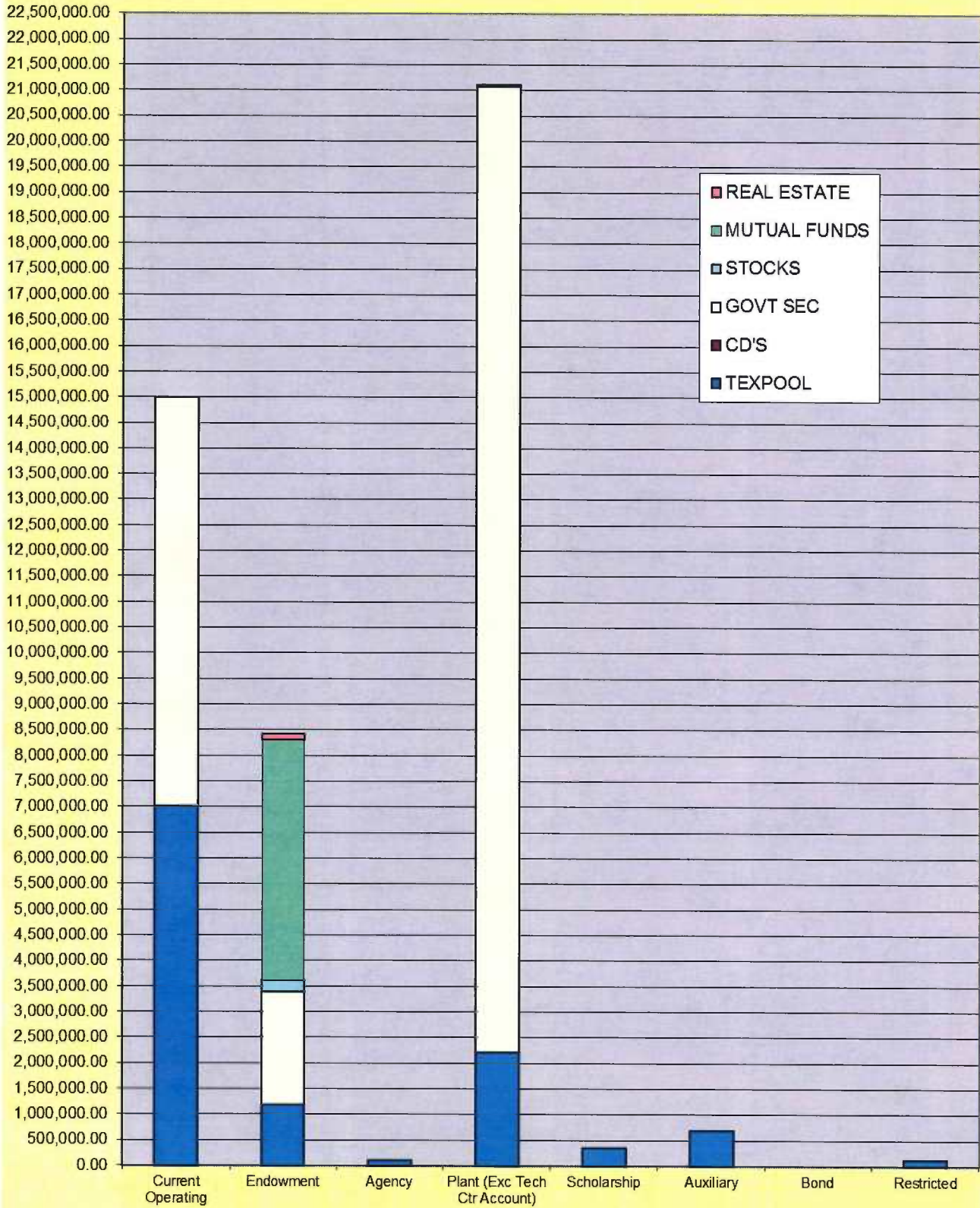
Period Beginning 09/01/16 Ending 11/30/16

November 30, 2016

The report that follows details the investments and earnings made by Wharton County Junior College (the College). Investments for all funds excluding the Endowment fund were made according to the College's investment policy dated August 16, 2016 and reflect compliance with the Texas Public Funds Investments Act, Chapter 2256.023. Investments for the Endowment fund were made according to the College's Endowment Fund Investment Policy.

Summarized below are the investments made by type of investment. Please see the attached schedules for further detail. Please direct all questions to Bryce Kocian, Investment Officer and Vice-President of Administrative Services, Wharton County Junior College, 911 Boling Highway, Wharton, Texas 77488. Phone: 979/532-6315 E-mail: brycek@wcjc.edu

INVESTMENTS BY FUND & TYPE



TOTAL INVESTMENT IN (as of period ending date 11/30/16)

	INCOME AMOUNT THIS QUARTER (Earned & Accrued)	QUARTER ENDING BOOK/MARKET VALUE (Includes gains and losses)
TEXPOOL	\$ 13,293.84	\$ 11,699,764.82
GOVERNMENT SECURITIES	\$ 93,993.93	\$ 29,019,304.40
CERTIFICATES OF DEPOSIT	\$ 0.00	\$ 0.00
STOCKS	\$ 1,802.42	\$ 257,684.08
MUTUAL FUNDS	\$ 4,301.20	\$ 4,694,925.21
REAL ESTATE	\$ 0.00	\$ 111,000.00

EXPLANATION OF REPORT TERMS

This report reflects the market value at the end of the stated period. This market value, what an independent, willing buyer will pay for the asset being offered, is based on information from various sources, usually a report by the firm from which the security was obtained or the Wall Street Journal. Yields are obtained from the same source as the market value. Starting with the F/Y 1997 financial statements all investments are stated at fair value, as required by GASB 31 and income is accrued each quarter.

Bryce D. Kocian
Bryce D. Kocian, Investment Officer

Cynthia Ward
Cynthia Ward, Investment Officer



Wharton County Junior College
911 Boling Highway • Wharton, Texas 77488 • (979) 632-4560

FY 17

SUMMARY

SUMMARY

FUND	S&P	MATURITY	BEGINNING	BEGINNING	CHANGES		ENDING	INCOME	ENDING	MATURITY	YIELD
	CREDIT	DATE	BOOK	MARKET	ADDITIONS	DEDUCTIONS	MARKET	ACCRUED	BOOK	VALUE	VALUE
	RATING		VALUE	VALUE			VALUE	OR RECEIVED	VALUE	VALUE	
CURRENT OPERATING											
TEXPOOL	AAAm	N/A	7,881,145.76	7,881,145.76	3,141,746.47	(4,000,000.00)	7,022,892.23	8,253.35	7,022,892.23	N/A	0.39%
GOVT SECUR-FHLB 06/13/18	AA+	06/13/18	1,050,153.30	1,050,153.30	0.00	(1,631.70)	1,048,521.60	2,827.23	1,048,521.60	1,050,000.00	1.79%
GOVT SECUR-FFCB 06.15.16	AA+	06/06/19	1,000,955.00	1,000,955.00	0.00	(5,737.00)	995,218.00	3,241.10	995,218.00	1,000,000.00	1.22%
GOVT SECUR-FHLMC 1/30/18	AA+	01/30/18	1,000,333.00	1,000,333.00	0.00	(1,000,333.00)	0.00	1,623.29	0.00	1,000,000.00	1.01%
GOVT SECUR-FFCB 03/01/21	AA+	03/01/21	1,001,255.00	1,001,255.00	0.00	(10,965.00)	990,290.00	4,045.89	990,290.00	1,000,000.00	1.65%
GOVT SECUR-FFCB 07.14.16	AA+	07/13/20	996,959.00	996,959.00	0.00	(13,870.00)	983,089.00	2,966.85	983,089.00	1,000,000.00	1.23%
GOVT SECUR-FHLB 04/13/21	AA+	04/13/21	1,000,073.00	1,000,073.00	0.00	(16,119.00)	983,954.00	3,669.59	983,954.00	1,000,000.00	1.55%
GOVT SECUR-FFCB 11.09.16	AA+	10/11/19	0.00	0.00	998,600.00	(9,331.00)	989,269.00	663.14	989,269.00	1,000,000.00	1.17%
GOVT SECUR-FHLB 11.21.16	AA+	11/09/21	0.00	0.00	985,750.00	(8,218.00)	977,532.00	363.01	977,532.00	1,000,000.00	1.80%
GOVT SECUR-FNMA 05/30/19	AA+	05/30/19	1,000,406.00	1,000,406.00	0.00	(2,146.00)	998,260.00	3,066.50	998,260.00	1,000,000.00	1.25%
TOTAL GOVT SECUR			7,950,134.30	7,950,134.30	1,984,350.00	(1,068,350.70)	7,966,133.60	22,466.60	7,966,133.60	9,050,000.00	1.41%
TOTAL INVESTMENT IN FUND			14,931,280.06	14,931,280.06	5,126,096.47	(5,068,350.70)	14,989,025.83	30,719.95	14,989,025.83	9,050,000.00	0.96%
ENDOWMENT											
TEXPOOL	AAAm	N/A	1,190,818.92	1,190,818.92	1,149.52	0.00	1,191,968.44	1,149.52	1,191,968.44	N/A	0.39%
STOCK-CST BRANDS	BB	N/A	1,051.82	1,051.82	5.28	0.00	1,057.10	1.38	1,057.10	N/A	N/A
STOCK-NCR	BB+	N/A	609.30	609.30	80.28	0.00	689.58	0.00	689.58	N/A	N/A
STOCK-TERADATA	Not Rated	N/A	571.14	571.14	0.00	(95.22)	475.92	0.00	475.92	N/A	N/A
STOCK-Bankamerica Corp(Nations) (Barnett)	BBB+	N/A	3,809.04	3,809.04	1,253.16	0.00	5,062.20	17.70	5,062.20	N/A	N/A
STOCK-Team Inc	Not Rated	N/A	5,400.90	5,400.90	379.10	0.00	5,780.00	0.00	5,780.00	N/A	N/A
STOCK-VALERO	BBB	N/A	11,070.00	11,070.00	1,098.00	0.00	12,168.00	240.00	12,168.00	N/A	N/A
STOCK-TENNECO	BB+	N/A	1,172.43	1,172.43	98.91	0.00	1,271.34	0.00	1,271.34	N/A	N/A
STOCK-OCCIDENTAL	A	N/A	39,347.20	39,347.20	0.00	(2,339.84)	37,007.36	384.00	37,007.36	N/A	N/A
STOCK-CA RESOURCES CORP	CCC+	N/A	248.25	248.25	237.25	0.00	485.50	0.00	485.50	N/A	N/A
STOCK-PG&E	BBB+	N/A	3,406.70	3,406.70	0.00	(228.80)	3,177.90	26.95	3,177.90	N/A	N/A
STOCK-EXXON/MOBIL	AA+	N/A	17,428.00	17,428.00	134.00	0.00	17,562.00	150.00	17,562.00	N/A	N/A
STOCK-TENET HEALTHCARE	B	N/A	812.60	812.60	0.00	(289.58)	523.02	0.00	523.02	N/A	N/A
STOCK-WALMART	AA	N/A	28,576.00	28,576.00	0.00	(300.00)	28,276.00	200.00	28,276.00	N/A	N/A
STOCK-DUKE ENERGY	A-	N/A	23,021.74	23,021.74	0.00	(2,027.34)	20,994.40	247.10	20,994.40	N/A	N/A
STOCK-SPECTRA ENERGY	BBB	N/A	5,485.48	5,485.48	793.10	0.00	6,278.58	62.37	6,278.58	N/A	N/A
STOCK-IBM	AA-	N/A	9,532.80	9,532.80	58.72	0.00	9,591.52	84.00	9,591.52	N/A	N/A
STOCK-APPLE COMPUTER	AA+	N/A	59,416.00	59,416.00	1,971.20	0.00	61,387.20	319.20	61,387.20	N/A	N/A
STOCK-ARKEMA	BBB	N/A	534.79	534.79	36.47	0.00	571.26	8.87	571.26	N/A	N/A
STOCK-TOTAL S.A.	A+	N/A	12,701.50	12,701.50	74.48	0.00	12,775.98	0.00	12,775.98	N/A	N/A
TOTAL STOCK			224,195.69	224,195.69	6,219.95	(5,280.78)	225,134.86	1,741.57	225,134.86	N/A	0.00%
MUTUAL FUND-DREYFUS MDCP INDX	NA	N/A	1,974,949.71	1,974,949.71	85,749.40	0.00	2,060,699.11	0.00	2,060,699.11	N/A	0.00%
MUTUAL FUND-FIDELITY SEL UTIL	NA	N/A	639,474.31	639,474.31	0.00	(21,447.65)	618,026.66	0.00	618,026.66	N/A	0.00%
MUTUAL FUND-FIDELITY SMALL CAP GROW	NA	N/A	687,499.68	687,499.68	12,642.88	0.00	700,142.56	0.00	700,142.56	N/A	0.00%
MUTUAL FUND-VOYA CORP LEAD TRST	NA	N/A	613,927.00	613,927.00	18,303.42	0.00	632,230.42	0.00	632,230.42	N/A	0.00%
MUTUAL FUND-VNGRD HI DIV YIELD INDX	NA	N/A	667,842.49	667,842.49	15,983.97	0.00	683,826.46	4,301.20	683,826.46	N/A	2.87%
TOTAL MUTUAL FUNDS			4,583,693.19	4,583,693.19	132,679.67	(21,447.65)	4,694,925.21	4,301.20	4,694,925.21	N/A	0.41%
GOVT SECUR-FFCB 01/22/18	AA+	01/22/18	999,981.00	999,981.00	0.00	(901.00)	999,080.00	2,343.56	999,080.00	1,000,000.00	0.96%
GOVT SECUR-FHLMC 04/28/2021	AA+	04/28/21	1,001,428.00	1,001,428.00	0.00	(1,001,428.00)	0.00	2,678.08	0.00	1,000,000.00	1.70%
GOVT SECUR-FFCB 03/26/18	AA+	03/26/18	1,200,061.20	1,200,061.20	0.00	(1,364.40)	1,198,696.80	3,060.16	1,198,696.80	1,200,000.00	1.04%
TOTAL GOVT SECUR			3,201,470.20	3,201,470.20	0.00	(1,003,693.40)	2,197,776.80	8,081.80	2,197,776.80	3,200,000.00	1.22%
REAL ESTATE			111,000.00	111,000.00	0.00	0.00	111,000.00	0.00	111,000.00	N/A	N/A
TOTAL INVESTMENT IN FUND			9,311,178.00	9,311,178.00	140,049.14	(1,030,421.83)	8,420,805.31	15,274.09	8,420,805.31	3,200,000.00	0.71%

FUND	S&P CREDIT RATING	MATURITY DATE	BEGINNING BOOK VALUE	BEGINNING MARKET VALUE	CHANGES		ENDING MARKET VALUE	INCOME ACCRUED OR RECEIVED	ENDING BOOK VALUE	MATURITY VALUE	YIELD
					ADDITIONS	DEDUCTIONS					
PLANT											
TEXPOOL (except Tech Center acct)	AAAm	N/A	2,714,554.39	2,714,554.39	2,570.45	(500,000.00)	2,217,124.84	2,570.45	2,217,124.84	N/A	0.39%
GOVT SECUR-FHLB 06.15.16	AA+	06/14/21	1,000,201.00	1,000,201.00	0.00	(13,119.00)	987,082.00	4,038.90	987,082.00	1,000,000.00	1.62%
GOVT SECUR-FFCB 10/10/17	AA+	10/10/17	1,004,742.00	1,004,742.00	0.00	(2,090.00)	1,002,652.00	2,851.37	1,002,652.00	1,000,000.00	1.04%
GOVT SECUR-FFCB 12/02/19	AA+	12/02/19	1,001,855.00	1,001,855.00	0.00	(2,661.00)	999,194.00	4,088.76	999,194.00	1,000,000.00	1.64%
GOVT SECUR-FHLMC 08/01/19	AA+	08/01/19	1,006,291.00	1,006,291.00	0.00	(10,462.00)	995,829.00	3,116.44	995,829.00	1,000,000.00	1.50%
GOVT SECUR-FHLMC 04/30/18	AA+	04/30/18	999,920.00	999,920.00	0.00	(999,920.00)	0.00	1,711.64	0.00	1,000,000.00	1.04%
GOVT SECUR-FNMA 03/24/21	AA+	03/24/21	999,047.00	999,047.00	0.00	(13,554.00)	985,493.00	3,678.08	985,493.00	1,000,000.00	1.50%
GOVT SECUR-FNMA 05/24/19	AA+	05/24/19	1,001,266.00	1,001,266.00	0.00	(4,760.00)	996,506.00	2,942.47	996,506.00	1,000,000.00	1.20%
GOVT SECUR-FFCB 05/25/21	AA+	05/25/21	1,001,125.00	1,001,125.00	0.00	(12,535.00)	988,590.00	4,070.41	988,590.00	1,000,000.00	1.66%
GOVT SECUR-FFCB 04/13/20	AA+	04/13/20	1,000,022.00	1,000,022.00	0.00	(7,994.00)	992,028.00	3,471.24	992,028.00	1,000,000.00	1.40%
GOVT SECUR-FNMA 11/25/20	AA+	11/25/20	1,001,321.00	1,001,321.00	0.00	(6,856.00)	994,465.00	4,413.70	994,465.00	1,000,000.00	1.80%
GOVT SECUR-FFCB 07.14.2016	AA+	07/14/21	998,151.00	998,151.00	0.00	(18,158.00)	979,993.00	3,689.86	979,993.00	1,000,000.00	1.49%
GOVT SECUR-FHLB 04/19/21	AA+	04/19/21	1,001,084.00	1,001,084.00	0.00	(12,075.00)	989,009.00	4,029.11	989,009.00	1,000,000.00	1.63%
GOVT SECUR-FHLB 02/10/20	AA+	02/10/20	1,000,229.00	1,000,229.00	0.00	(7,435.00)	992,794.00	3,415.62	992,794.00	1,000,000.00	1.37%
GOVT SECUR-FHLB 10/28/20	AA+	10/28/20	1,001,334.00	1,001,334.00	0.00	(6,239.00)	995,095.00	4,264.66	995,095.00	1,000,000.00	1.74%
GOVT SECUR-FFCB 10/19/18	AA+	10/19/18	999,399.00	999,399.00	0.00	(2,323.00)	997,076.00	2,653.01	997,076.00	1,000,000.00	1.09%
GOVT SECUR-FNMA 02/24/21	AA+	02/24/21	1,002,456.00	1,002,456.00	0.00	(11,666.00)	990,790.00	3,989.04	990,790.00	1,000,000.00	1.60%
GOVT SECUR-FHLB 10/19/20	AA+	10/19/20	1,003,667.00	1,003,667.00	0.00	(9,754.00)	993,913.00	4,215.06	993,913.00	1,000,000.00	1.70%
GOVT SECUR-FFCB 11/15/21	AA+	11/15/21	0.00	0.00	1,000,000.00	(21,735.00)	978,265.00	624.66	978,265.00	1,000,000.00	1.52%
GOVT SECUR-FHLB 11/24/21	AA+	11/24/21	0.00	0.00	1,000,000.00	(3,107.00)	996,893.00	0.00	996,893.00	1,000,000.00	2.00%
GOVT SECUR-FNMA 12/20/17	AA+	12/20/17	1,000,845.00	1,000,845.00	0.00	(1,118.00)	999,727.00	2,181.50	999,727.00	1,000,000.00	1.08%
TOTAL GOVT SECURITIES			18,022,955.00	18,022,955.00	2,000,000.00	(1,167,561.00)	18,855,394.00	63,445.53	18,855,394.00	20,000,000.00	1.48%
STOCK- HEWLETT PACKARD	BBB	N/A	1,135.23	1,135.23	54.90	0.00	1,190.13	14.15	1,190.13	N/A	N/A
STOCK- HEWLETT PACKARD	BBB	N/A	1,696.92	1,696.92	150.89	0.00	1,847.81	0.00	1,847.81	N/A	N/A
STOCK- COCA COLA	BBB	N/A	1,476.62	1,476.62	0.00	(118.54)	1,358.08	11.90	1,358.08	N/A	N/A
STOCK- DEVON ENERGY	BBB	N/A	25,131.40	25,131.40	3,021.80	0.00	28,153.20	34.80	28,153.20	N/A	N/A
TOTAL STOCK			29,440.17	29,440.17	3,227.59	(118.54)	32,549.22	60.85	32,549.22	N/A	N/A
TOTAL INVESTMENT IN FUND			20,766,949.56	20,766,949.56	2,005,798.04	(1,667,679.54)	21,105,068.06	66,076.83	21,105,068.06	20,000,000.00	1.37%
BOND											
TOTAL INVESTMENT IN FUND	0.00	N/A	0.00	0.00	0.00	0.00	0.00	0.00	0.00	N/A	
AUXILIARY											
TEXPOOL	AAAm	N/A	698,883.85	698,883.85	674.72	0.00	699,558.57	674.72	699,558.57	N/A	0.39%
SCHOLARSHIP											
TEXPOOL	AAAm	N/A	598,660.48	598,660.48	449.18	(250,000.00)	349,109.66	449.18	349,109.66	N/A	0.39%
AGENCY											
TEXPOOL	AAAm	N/A	103,275.71	103,275.71	99.67	0.00	103,375.38	99.67	103,375.38	N/A	0.39%
RESTRICTED											
TEXPOOL	AAAm	N/A	82,623.75	82,623.75	33,111.95	0.00	115,735.70	96.95	115,735.70	N/A	0.39%
TOTAL STOCKS			253,635.86	253,635.86	9,447.54	(5,399.32)	257,684.08	1,802.42	257,684.08	N/A	0.00%
TOTAL MUTUAL FUNDS			4,583,693.19	4,583,693.19	132,679.67	(21,447.65)	4,694,925.21	4,301.20	4,694,925.21	N/A	0.41%
TOTAL GOVT SECURITIES			28,274,559.50	28,274,559.50	3,984,350.00	(3,239,605.10)	29,019,304.40	93,993.93	29,019,304.40	32,250,000.00	1.43%
TOTAL CD'S			0.00	0.00	0.00	0.00	0.00	0.00	0.00	0.00	0.00%
TOTAL TEXPOOL			13,269,962.86	13,269,962.86	3,179,801.96	(4,750,000.00)	11,699,764.82	13,293.84	11,699,764.82	N/A	0.39%
TOTAL MONEY MARKET			(0.00)	(0.00)	0.00	0.00	(0.00)	0.00	(0.00)	N/A	0.00%
TOTAL REAL ESTATE			111,000.00	111,000.00	0.00	0.00	111,000.00	0.00	111,000.00	N/A	N/A
TOTAL ALL INVESTMENTS			46,492,851.41	46,492,851.41	7,306,279.17	(8,016,452.07)	45,782,678.51	113,391.39	45,782,678.51	N/A	1.09%



Wharton County Junior College

911 Boling Highway • Wharton, Texas 77488 • (979) 532-4560

INVESTMENT REPORT FOR THE FIRST QUARTER FISCAL YEAR 2017

Period includes 09/01/16 - 11/30/16

FUND/INVESTMENT	BEGINNING	CHANGES		ENDING	ENDING	PREVIOUS	INCOME	YIELD	
	MARKET	ADDITIONS	DEDUCTIONS	MARKET	BOOK	YEAR - ENDING			
	VALUE			VALUE	VALUE	BOOK VALUE FY 16			
CURRENT OPERATING									
INVESTMENT IN TEXPOOL	7,881,145.76	3,141,746.47	(4,000,000.00)	7,022,892.23	7,022,892.23	7,881,145.76	INTEREST	8,253.35	0.39%
INVESTMENT IN GOVERNMENT SECURITIES	7,050,134.30	1,984,350.00	(1,068,350.70)	7,966,133.60	7,966,133.60	7,050,134.30	INTEREST	22,466.60	1.41%
TOTAL INVESTMENT IN FUND	14,931,280.06	5,126,096.47	(5,068,350.70)	14,989,025.83	14,989,025.83	14,931,280.06		30,719.95	0.96%
WEIGHTED AVERAGE MATURITY OPERATING FUNDS (DAYS)	475.89								
ENDOWMENT									
INVESTMENT IN TEXPOOL	1,190,818.92	1,149.52	0.00	1,191,968.44	1,191,968.44	1,190,818.92	INTEREST	1,149.52	0.39%
INVESTMENT IN CD	0.00	0.00	0.00	0.00	0.00	0.00	INTEREST	0.00	0.00%
INVESTMENT IN GOVERNMENT SECURITIES	3,201,470.20	0.00	(1,003,693.40)	2,197,776.80	2,197,776.80	3,201,470.20	INTEREST	8,081.80	1.22%
INVESTMENT IN STOCKS	224,195.69	6,219.95	(5,280.78)	225,134.86	225,134.86	224,195.69	DIVIDENDS	1,741.57	0.00%
INVESTMENT IN MUTUAL FUNDS	4,583,693.19	132,679.67	(21,447.65)	4,694,925.21	4,694,925.21	4,583,693.19	DIVIDENDS	4,301.20	0.41%
INVESTMENT IN REAL ESTATE	111,000.00	0.00	0.00	111,000.00	111,000.00	111,000.00	LEASE	0.00	
TOTAL INVESTMENT IN FUND	9,311,178.00	140,049.14	(1,030,421.83)	8,420,805.31	8,420,805.31	9,311,178.00		15,274.09	0.71%
WEIGHTED AVERAGE MATURITY ENDOWMENT FUND (DAYS)	218.80								
PLANT									
INVESTMENT IN TEXPOOL (Excluding Tech Center)	2,714,554.39	2,570.45	(500,000.00)	2,217,124.84	2,217,124.84	2,714,554.39	INTEREST	2,570.45	0.39%
INVESTMENT IN TEXPOOL-Tech Center	0.00	0.00	0.00	0.00	0.00	0.00	INTEREST	0.00	
INVESTMENT IN CD	0.00	0.00	0.00	0.00	0.00	0.00	INTEREST	0.00	
INVESTMENT IN GOVERNMENT SECURITIES	18,022,955.00	2,000,000.00	(1,167,561.00)	18,855,394.00	18,855,394.00	18,022,955.00	INTEREST	63,445.53	1.48%
INVESTMENT IN STOCKS	29,440.17	3,227.59	(118.54)	32,549.22	32,549.22	29,440.17	DIVIDENDS	60.85	
TOTAL INVESTMENT IN FUND	20,766,949.56	2,005,798.04	(1,667,679.54)	21,105,068.06	21,105,068.06	20,766,949.56		66,076.83	1.37%

FUND/INVESTMENT	BEGINNING	CHANGES		ENDING	ENDING	PREVIOUS	INCOME	ACCRUED / RECEIVED	YIELD
	MARKET	ADDITIONS	DEDUCTIONS	MARKET	BOOK	YEAR - ENDING			
	VALUE			VALUE	VALUE	BOOK VALUE FY 16			
BOND									
TOTAL INVESTMENT IN FUND	0.00	0.00	0.00	0.00	0.00	0.00		0.00	
WEIGHTED AVERAGE MATURITY PLANT & BOND FUNDS (DAYS)	1,118.65								
AGENCY									
INVESTMENT IN TEXPOOL	103,275.71	99.67	0.00	103,375.38	103,375.38	103,275.71	INTEREST	99.67	0.39%
TOTAL INVESTMENT IN FUND	103,275.71	99.67	0.00	103,375.38	103,375.38	103,275.71		99.67	0.39%
AUXILIARY									
INVESTMENT IN TEXPOOL	698,883.85	674.72	0.00	699,558.57	699,558.57	698,883.85	INTEREST	674.72	0.39%
TOTAL INVESTMENT IN FUND	698,883.85	674.72	0.00	699,558.57	699,558.57	698,883.85		674.72	0.39%
SCHOLARSHIP									
INVESTMENT IN TEXPOOL	598,660.48	449.18	(250,000.00)	349,109.66	349,109.66	598,660.48	INTEREST	449.18	0.39%
TOTAL INVESTMENT IN FUND	598,660.48	449.18	(250,000.00)	349,109.66	349,109.66	598,660.48		449.18	0.39%
RESTRICTED									
INVESTMENT IN TEXPOOL	82,623.75	33,111.95	0.00	115,735.70	115,735.70	82,623.75	INTEREST	96.95	0.39%
TOTAL INVESTMENT IN FUND	82,623.75	33,111.95	0.00	115,735.70	115,735.70	82,623.75		96.95	0.39%

	This period		Previous year	
TOTAL	45,782,678.51	45,782,678.51	46,492,851.41	TOTAL 113,391.39 1.09%
stocks	257,684.08	257,684.08	253,635.86	stocks 1,802.42
mutual funds	4,694,925.21	4,694,925.21	4,583,693.19	mutual funds 4,301.20
govt sec	29,019,304.40	29,019,304.40	28,274,559.50	govt sec 93,993.93
CD's	0.00	0.00	0.00	CD's 0.00
Texpool	11,699,764.82	11,699,764.82	13,269,962.86	Texpool 13,293.84
Money Market	(0.00)	(0.00)	0.00	Prosperity Accol 0.00
Real Estate	111,000.00	111,000.00	111,000.00	Real Estate 0.00
	45,782,678.51	45,782,678.51	46,492,851.41	113,391.39

Wharton County Junior College						
Investment Weighted Average Maturity						
For Quarter Ending November 30, 2016						
INVESTMENT DESCRIPTION	PURCHASE DATE	MATURITY DATE	MATURITY VALUE	DAYS TO MATURITY	WAM (DAYS)	
OPERATING FUNDS						
CASH			12,432,366.49	1	0.61	
GOVT SECUR-FFCB 3133EFF28	3/1/2016	3/1/2021	1,000,000.00	1,552	75.77	
GOVT SECUR-FHLB 3130A9Z61	11/21/2016	11/9/2021	1,000,000.00	1,805	88.12	
GOVT SECUR-FHLB 313383A68	7/1/2013	6/13/2018	1,050,000.00	560	28.71	
GOVT SECUR-FHLB 3130A7Q81	4/29/2016	4/13/2021	1,000,000.00	1,595	77.87	
GOVT SECUR-FFCB 3133EGLB9	7/14/2016	7/13/2020	1,000,000.00	1,321	64.49	
GOVT SECUR-FFCB 3133EGCZ6	6/15/2016	6/6/2019	1,000,000.00	918	44.82	
GOVT SECUR-FFCB 3133EGXK6	11/9/2016	10/11/2019	1,000,000.00	1,045	51.02	
GOVT SECUR-FNMA 3136G3QZ1	5/27/2016	5/30/2019	1,000,000.00	911	44.48	
			20,482,366.49			
WEIGHTED AVERAGE MATURITY DAYS-OPERATING FUNDS					475.89	
ENDOWMENT FUNDS						
CASH			2,359,162.86	1	0.52	
GOVT SECUR-FFCB 3133ECDE1	1/23/2013	1/22/2018	1,000,000.00	418	91.68	
GOVT SECUR-FFCB 3133ECJX3	4/18/2013	3/26/2018	1,200,000.00	481	126.60	
TOTAL ENDOWMENT			4,559,162.86			
WEIGHTED AVERAGE MATURITY DAYS ENDOWMENT FUNDS					218.80	
PLANT AND BONDS FUNDS						
CASH			2,894,118.00	1	0.13	
GOVT SECUR-FFCB 3133EFJE8	10/19/2015	10/19/2018	1,000,000.00	688	31.42	
GOVT SECUR-FHLB 3130A6LQ8	10/19/2015	10/19/2020	1,000,000.00	1,419	64.81	
GOVT SECUR-FHLMC 3137EADK2	11/25/2015	8/1/2019	1,000,000.00	974	44.49	
GOVT SECUR-FNMA 3136G2TB3	11/25/2015	11/25/2020	1,000,000.00	1,456	66.50	
GOVT SECUR-FHLB 3130A6MH7	11/2/2015	10/28/2020	1,000,000.00	1,428	65.22	
GOVT SECUR-FNMA 3136G3CM5	3/24/2016	3/24/2021	1,000,000.00	1,575	71.94	
GOVT SECUR-FNMA 3136G3MC6	5/24/2016	5/24/2019	1,000,000.00	905	41.34	
GOVT SECUR-FNMA 3136G2XN2	2/26/2016	2/24/2021	1,000,000.00	1,638	74.81	
GOVT SECUR-FFCB 3133EGBZ7	5/25/2016	5/25/2021	1,000,000.00	1,637	74.77	
GOVT SECUR-FFCB 3133EDXA5	11/7/2014	10/10/2017	1,000,000.00	314	14.34	
GOVT SECUR-FNMA 3135G0RT2	11/7/2014	12/20/2017	1,000,000.00	385	17.58	
GOVT SECUR-FHLB 3130A7A70	2/10/2016	2/10/2020	1,000,000.00	1,167	53.30	
GOVT SECUR-FFCB 3133EFRM1	12/2/2015	12/2/2019	1,000,000.00	1,097	50.10	
GOVT SECUR-FFCB 3133EF2L0	4/13/2016	4/13/2020	1,000,000.00	1,230	56.18	
GOVT SECUR-FHLB 3130A7RL1	4/19/2016	4/19/2021	1,000,000.00	1,601	73.12	
GOVT SECUR-FHLB 3130A8FC2	6/15/2016	6/14/2021	1,000,000.00	1,657	75.68	
GOVT SECUR-FFCB 3133EGLU7	7/14/2016	7/14/2021	1,000,000.00	1,687	77.05	
GOVT SECUR-FFCB 3133EGG82	11/15/2016	11/15/2021	1,000,000.00	1,811	82.72	
GOVT SECUR-FHLB 3130AA7B8	11/30/2016	11/24/2021	1,000,000.00	1,820	83.13	
TOTAL PLANT			21,894,118.00			
WEIGHTED AVERAGE MATURITY DAYS PLANT AND BOND FUNDS					1118.65	

WEIGHTED AVERAGE MATURITY FUND

b14



*Wharton County
Junior College*



Monthly Financial Reports

November 2016



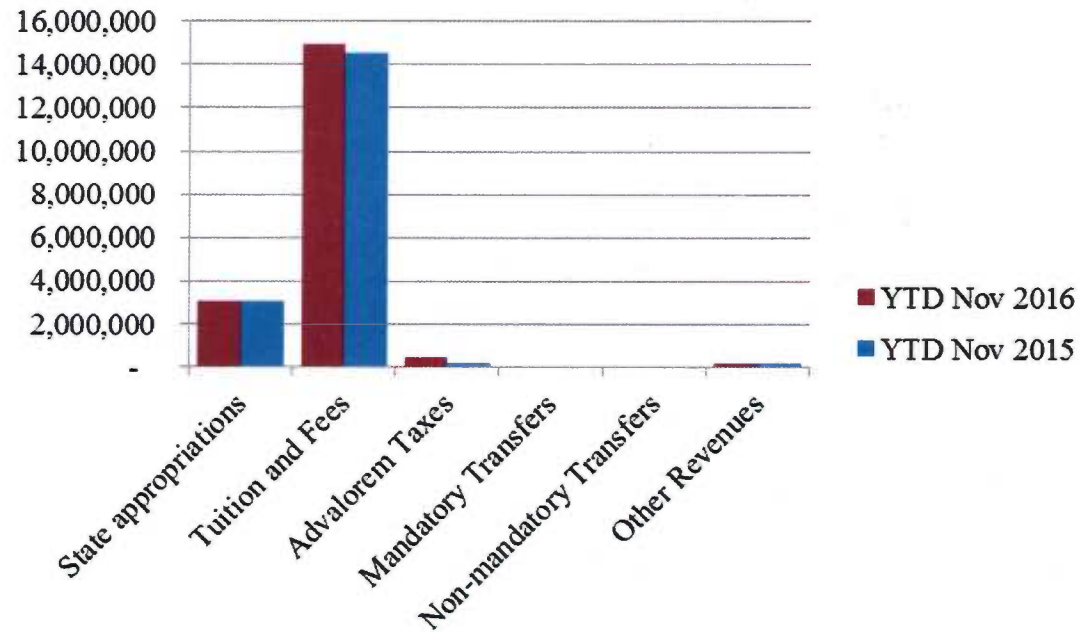
Revenue & Expenditure Summary

	FISCAL 2017				FISCAL 2016			
	Current Month	Y-T-D ACTUAL	Budget	% of Budget	Y-T-D ACTUAL	Budget	% of Budget	% OF PRIOR YR ACTUAL
Fund 1000								
Revenues:								
State appropriations	\$864,125	\$3,047,182	\$ 9,112,077	33.44%	\$3,052,548	\$ 9,112,077	33.50%	100%
Tuition and Fees	5,219,539	14,988,884	21,903,163	68.43%	14,540,893	21,244,443	68.45%	103%
Advalorem Taxes	363,457	406,944	5,800,669	7.02%	125,596	5,238,000	2.40%	324%
Mandatory Transfers	-	-	1,372,261	0.00%	-	302,500	0.00%	0%
Non-mandatory Transfers	-	-	248,772	0.00%	-	209,111	0.00%	0%
Other Revenues	(3,630)	134,896	448,963	30.05%	167,412	443,101	37.78%	81%
Total Revenues	6,443,491	18,577,906	38,885,905	47.78%	17,886,449	36,549,232	48.94%	104%
Expenditures:								
Salaries	1,827,255	5,332,251	22,315,219	23.90%	5,162,664	21,356,446	24.17%	103%
Employee Benefits	403,387	1,026,498	5,234,612	19.61%	999,542	4,940,274	20.23%	103%
Capital Expenditures	60,073	60,073	461,237	-	5,602	28,603	-	0%
Mandatory Transfers	-	179,429	361,800	49.59%	25,429	357,300	7.12%	0%
Non-mandatory Transfers	-	-	-	-	-	-	-	0%
Other Expenditures	729,710	2,363,896	10,513,037	22.49%	2,317,498	9,866,609	23.49%	102%
Total expenditures	3,020,425	8,962,147	38,885,905	23.05%	8,510,735	36,549,232	23.29%	105%
Net increase/ (decrease) in net assets	\$ 3,423,066	\$ 9,615,759			\$ 9,375,714			
Less Outstanding encumbrances		(1,793,064)			(1,312,762)			
Net increase less encumbrances		\$ 7,822,695			\$ 8,062,952			

* Note: Net student receivables in the amount of \$5,121,391.16 are currently outstanding. Tuition and fees are subject to collection in future periods.



Year to Date Revenues

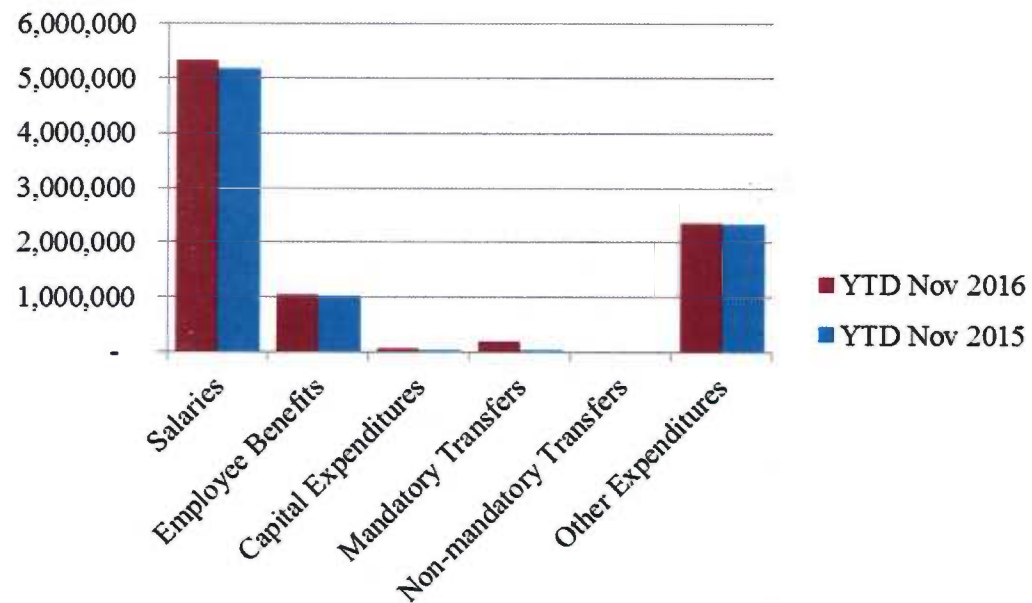




Wharton County
Junior College

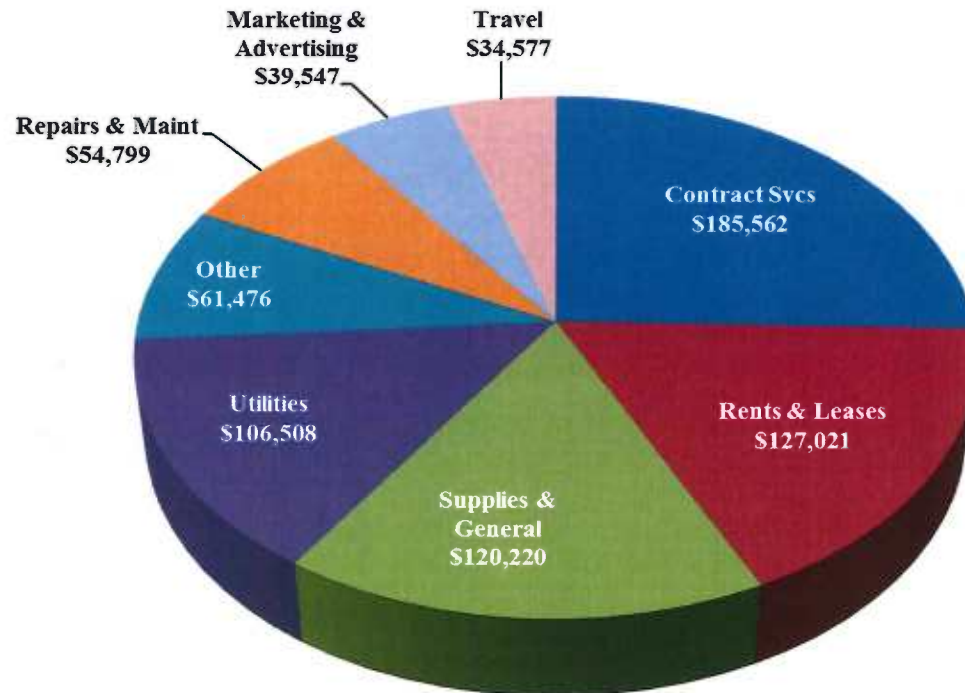


Year to Date Expenses





Other Expenses for November



- Contract services include \$82k for University of Houston Library services for FY17

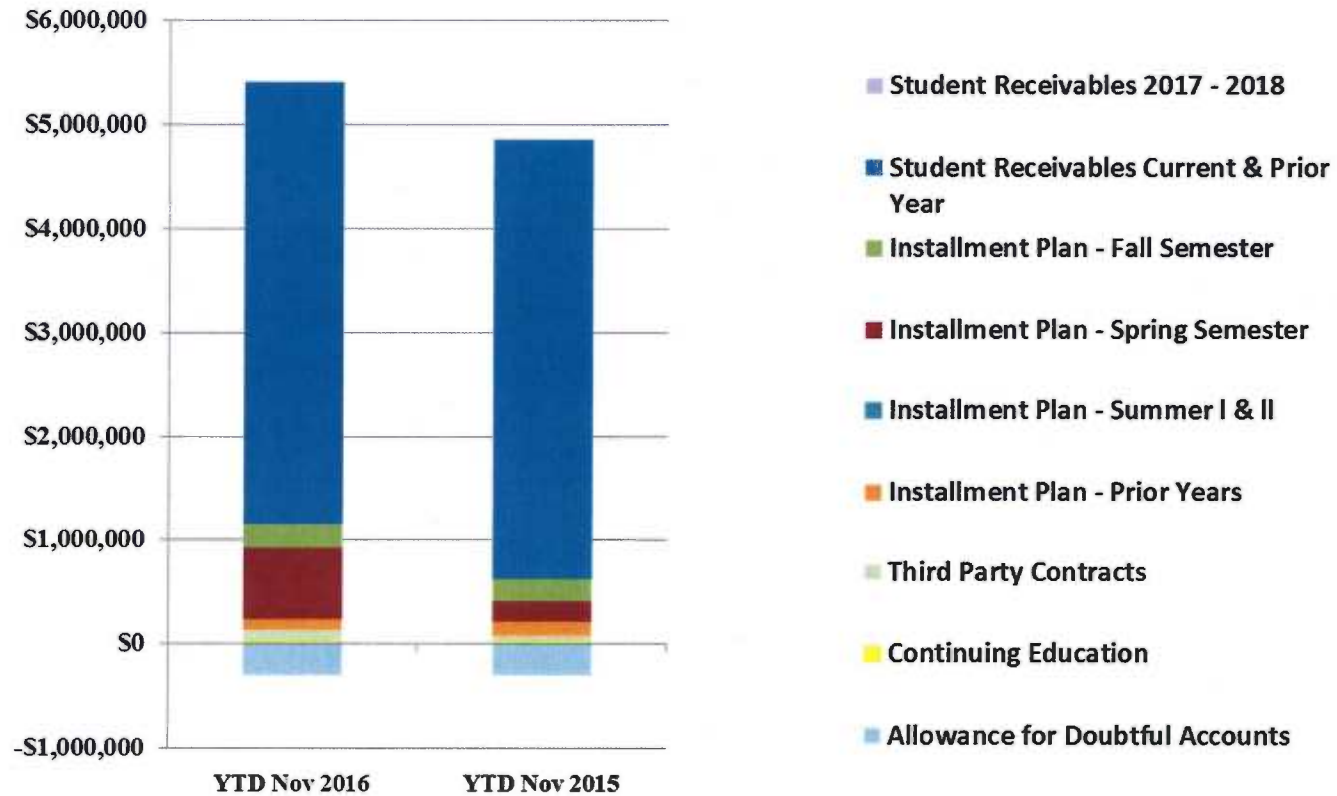


Analysis of Student Receivable Outstanding As of November 30, 2016

	2017	2016
Student Receivables Current & Prior Year	\$ 4,264,637.62	\$ 4,246,156.61
Installment Plan Receivable Due Fall Semester	232,747.07	\$ 222,945.30
Installment Plan Receivable Due Spring Semester	683,332.76	181,646.41
Installment Plan Receivable Summer I & II	0.00	0.00
Installment Plan Receivable Prior Years	\$ 108,379.89	135,507.89
Total Installment Plan Receivable	\$ 1,024,459.72	\$ 540,099.60
Third Party Contracts Receivable	\$ 106,856.40	\$ 59,739.96
Continuing Education Receivable	21,426.25	20,095.00
Allowance for Doubtful Accounts	(295,988.83)	(299,581.68)
	\$ 5,121,391.16	\$ 4,566,509.49



AR by Category



COMBINED BALANCE SHEET

(Funds included: GOVERNMENTAL FUND TYPES)

Governmental Fund Types

	Auxiliary Enterprise	Current Unrestricted	Restricted Funds	Current Year 2017	Prior Year 2016
ASSETS and OTHER DEBITS:					
ASSETS:					
Cash	341,606	2,329,021	943,055	3,613,681	4,148,791
Cash Investments	699,559	14,989,026	464,845	16,153,430	14,815,757
Accounts Receivable	26,660	5,148,226	5,681	5,180,567	4,627,417
Taxes Receivable		349,322	--	349,322	320,601
Local, St & Fed Agency Receivable		--	8,274	8,274	16,126
Due From Other Funds		--	--	--	69,380
Prepaid Expense	35,057	--	--	35,057	33,304
Property, Plant & Equipment		--	--	--	--
Deferred Outflows		2,267,905	--	2,267,905	886,346
TOTAL ASSETS AND OTHER DEBITS:	1,102,882	25,083,500	1,421,855	27,608,237	24,917,723
Liabilities, equity and other credits					
LIABILITIES:					
Accounts Payable		-50,537	17	-50,520	-42,724
Employee Benefits Payable		173,650	--	173,650	200,701
Payroll Taxes Payable		--	--	--	--
Accrued Liabilities		--	--	--	--
Deferred Revenue	2,050	-6,841	446,064	441,273	489,137
Long Term Debt		--	--	--	--
Net Pension Liability		5,747,658	--	5,747,658	5,031,677
Deposits Payable	45,385	11,378	--	56,763	52,778
Due To Other Funds		--	--	--	45,594
Scholarships-Designated Donations		--	35,929	35,929	-88,889
Scholarships-Non-designated		--	735,436	735,436	85,407
Donatio					
Deferred Inflows		2,169,564	--	2,169,564	1,538,983
TOTAL LIABILITIES:	47,435	8,044,872	1,217,446	9,309,753	7,312,664
EQUITY AND OTHER CREDITS:					
Control Accounts		--	--	--	--
Fund Balances		--	--	--	--
Prior Year Fund Balance		7,422,869	--	7,422,869	7,029,039
Endowment Fund-Original		--	--	--	--
Endowment Fund-Income		--	--	--	--
FB Professional Development		--	--	--	--
FB Salary Equity		--	--	--	--
FB Capital Equipment		--	--	--	--

REPORT FGRCOBS
COAS: W
FISCAL YEAR: 17

Wharton County Junior College
Combined Balance Sheet--All Fund Types and Account Groups
30-Nov-2016
(With comparative totals for 30-Nov-2015)
(amounts expressed in dollars)

RUN DATE: 12/12/2016
TIME: 08:58:36 AM
PAGE: 2

Governmental Fund Types

	Auxiliary Enterprise	Current Unrestricted	Restricted Funds	Current Year 2017	Prior Year 2016
EQUITY AND OTHER CREDITS:					
FB Investment Gain And Loss		--	--		
Fund Balance Receivables		--	--		
Reserved-Undesignated		--	--		
FBTC Operating Fund Balance		--	--		
Plant Fund Balance		--	--		
Bond Fund Balance		--	--		
Scholarship		--	--		
Fund Balance-Rounding Diff		--	--		
Fund Balances:					
Reserve for Encumbrance	46,361	1,793,064	52,744	1,892,169	1,539,191
Fund Balance	1,009,086	7,822,695	151,665	8,983,446	9,036,829
Reserve For Operations		--	--		
TOTAL EQUITY AND OTHER CREDITS:	1,055,447	17,038,628	204,410	18,298,484	17,605,059
TOTAL LIABILITIES, EQUITY AND OTHER CREDITS:	1,102,882	25,083,500	1,421,855	27,608,237	24,917,723

REPORT FGRCOBS
COAS: W
FISCAL YEAR: 17

Wharton County Junior College
Combined Balance Sheet--All Fund Types and Account Groups
30-Nov-2016
(With comparative totals for 30-Nov-2015)
(amounts expressed in dollars)

RUN DATE: 12/12/2016
TIME: 08:58:36 AM
PAGE: 3

Proprietary Fund Types

	Agency Funds	Current Year 2017	Prior Year 2016
ASSETS and OTHER DEBITS:			
ASSETS:			
Cash	182,060	182,060	177,454
Cash Investments	103,375	103,375	103,028
Accounts Receivable	-	-	-
Taxes Receivable			
Local, St & Fed Agency Receivable			
Due From Other Funds			
Prepaid Expense			
Property, Plant & Equipment			
Deferred Outflows			
TOTAL ASSETS AND OTHER DEBITS:	285,436	285,436	280,482
Liabilities, equity and other credits			
LIABILITIES:			
Accounts Payable			2,230
Employee Benefits Payable			-
Payroll Taxes Payable			
Accrued Liabilities			
Deferred Revenue			
Long Term Debt			
Net Pension Liability			
Deposits Payable	285,198	285,198	278,100
Due To Other Funds			
Scholarships-Designated Donations			
Scholarships-Non-designated			
TOTAL LIABILITIES:	285,198	285,198	280,330
EQUITY AND OTHER CREDITS:			
Control Accounts	238	238	152
Fund Balances			
Prior Year Fund Balance			
Endowment Fund-Original			
Endowment Fund-Income			
FB Professional Development			
FB Salary Equity			
FB Capital Equipment			

REPORT FGRCOBS
COAS: W
FISCAL YEAR: 17

Wharton County Junior College
Combined Balance Sheet--All Fund Types and Account Groups
30-Nov-2016
(With comparative totals for 30-Nov-2015)
(amounts expressed in dollars)

RUN DATE: 12/12/2016
TIME: 08:58:36 AM
PAGE: 4

Proprietary Fund Types

Agency Funds	Current Year 2017	Prior Year 2016
<hr/>		
EQUITY AND OTHER CREDITS:		
FB Investment Gain And Loss		
Fund Balance Receivables		
Reserved-Undesignated		
FBTC Operating Fund Balance		
Plant Fund Balance		
Bond Fund Balance		
Scholarship		
Fund Balance-Rounding Diff		
Fund Balances:		
Reserve for Encumbrance		
Fund Balance		
Reserve For Operations		
TOTAL EQUITY AND OTHER CREDITS:	238	152
<hr/>		
TOTAL LIABILITIES, EQUITY AND OTHER CREDITS:	285,436	280,482
=====		

REPORT FGRCOBS
COAS: W
FISCAL YEAR: 17

Wharton County Junior College
Combined Balance Sheet--All Fund Types and Account Groups
30-Nov-2016
(With comparative totals for 30-Nov-2015)
(amounts expressed in dollars)

RUN DATE: 12/12/2016
TIME: 08:58:36 AM
PAGE: 5

Fiduciary Fund Types

	Quasi Endowment Fund	Endowment Funds	Current Year 2017	Prior Year 2016
ASSETS and OTHER DEBITS:				
ASSETS:				
Cash		1,167,180	1,167,180	1,699,537
Cash Investments		8,420,805	8,420,805	7,422,275
Accounts Receivable		5,596	5,596	6,427
Taxes Receivable		--	--	--
Local, St & Fed Agency Receivable		--	--	--
Due From Other Funds		--	--	--
Prepaid Expense		--	--	--
Property, Plant & Equipment		--	--	--
Deferred Outflows		--	--	--
TOTAL ASSETS AND OTHER DEBITS:		9,593,582	9,593,582	9,128,238
Liabilities, equity and other credits				
LIABILITIES:				
Accounts Payable		--	--	--
Employee Benefits Payable		--	--	--
Payroll Taxes Payable		--	--	--
Accrued Liabilities		--	--	--
Deferred Revenue		--	--	--
Long Term Debt		--	--	--
Net Pension Liability		--	--	--
Deposits Payable		--	--	--
Due To Other Funds		--	--	23,787
Scholarships-Designated Donations		--	--	--
Scholarships-Non-designated		--	--	--
Donatio				
Deferred Inflows		--	--	--
TOTAL LIABILITIES:				23,787
EQUITY AND OTHER CREDITS:				
Control Accounts		--	--	--
Fund Balances		--	--	--
Prior Year Fund Balance		--	--	--
Endowment Fund-Original		--	--	--
Endowment Fund-Income		--	--	--
FB Professional Development		--	--	--
FB Salary Equity		--	--	--
FB Capital Equipment		--	--	--

REPORT FGRCOBS
COAS: W
FISCAL YEAR: 17

Wharton County Junior College
Combined Balance Sheet--All Fund Types and Account Groups
30-Nov-2016
(With comparative totals for 30-Nov-2015)
(amounts expressed in dollars)

RUN DATE: 12/12/2016
TIME: 08:58:36 AM
PAGE: 6

Fiduciary Fund Types

	Quasi Endowment Fund	Endowment Funds	Current Year 2017	Prior Year 2016
<hr/>				
EQUITY AND OTHER CREDITS:				
FB Investment Gain And Loss		--		
Fund Balance Receivables		--		
Reserved-Undesignated		--		
FBTC Operating Fund Balance		--		
Plant Fund Balance		--		
Bond Fund Balance		--		
Scholarship		--		
Fund Balance-Rounding Diff		--		
Fund Balances:				
Reserve for Encumbrance		--		
Fund Balance		9,593,582	9,593,582	9,104,451
Reserve For Operations		--		
TOTAL EQUITY AND OTHER CREDITS:		9,593,582	9,593,582	9,104,451
<hr/>				
TOTAL LIABILITIES,		9,593,582	9,593,582	9,128,238
EQUITY AND OTHER CREDITS:				
=====				

REPORT FGRCOBS
COAS: W
FISCAL YEAR: 17

Wharton County Junior College
Combined Balance Sheet--All Fund Types and Account Groups
30-Nov-2016
(With comparative totals for 30-Nov-2015)
(amounts expressed in dollars)

RUN DATE: 12/12/2016
TIME: 08:58:36 AM
PAGE: 7

Account Groups

	Repair and Replacement	Debt Retirement Bond Fund	Investment in Plant Fund	Unexpended Plant Fund	Current Year 2017	Prior Year 2016
ASSETS and OTHER DEBITS:						
ASSETS:						
Cash	13,174,284	507,349	--	-13,004,626	677,007	2,269,542
Cash Investments	--	--	--	21,105,068	21,105,068	19,360,777
Accounts Receivable	--	--	--	51,930	51,930	31,346
Taxes Receivable	--	--	--	--	--	--
Local, St & Fed Agency Receivable	--	--	--	--	--	--
Due From Other Funds	--	--	--	--	--	--
Prepaid Expense	--	--	--	--	--	--
Property, Plant & Equipment	--	--	24,791,755	--	24,791,755	23,915,912
Deferred Outflows	--	--	--	--	--	--
TOTAL ASSETS AND OTHER DEBITS:	13,174,284	507,349	24,791,755	8,152,372	46,625,760	45,577,576
Liabilities, equity and other credits						
LIABILITIES:						
Accounts Payable	--	--	--	--	--	--
Employee Benefits Payable	--	--	--	--	--	--
Payroll Taxes Payable	--	--	--	--	--	--
Accrued Liabilities	--	--	--	--	--	--
Deferred Revenue	--	--	--	--	--	--
Long Term Debt	--	--	2,294,087	--	2,294,087	2,589,670
Net Pension Liability	--	--	--	--	--	--
Deposits Payable	--	--	--	--	--	--
Due To Other Funds	--	--	--	--	--	--
Scholarships-Designated Donations	--	--	--	--	--	--
Scholarships-Non-designated	--	--	--	--	--	--
Donatio	--	--	--	--	--	--
Deferred Inflows	--	--	--	--	--	--
TOTAL LIABILITIES:			2,294,087		2,294,087	2,589,670
EQUITY AND OTHER CREDITS:						
Control Accounts	--	--	--	--	--	--
Fund Balances	--	--	--	--	--	--
Prior Year Fund Balance	--	--	--	--	--	--
Endowment Fund-Original	--	--	--	--	--	--
Endowment Fund-Income	--	--	--	--	--	--
FB Professional Development	--	--	--	--	--	--
FB Salary Equity	--	--	--	--	--	--
FB Capital Equipment	--	--	16,374,011	--	16,374,011	14,214,818

Memorandum Only

	Current Year 2017	Prior Year 2016
ASSETS and OTHER DEBITS:		
ASSETS:		
Cash	5,639,929	8,295,323
Cash Investments	45,782,679	41,701,837
Accounts Receivable	5,238,093	4,665,189
Taxes Receivable	349,322	320,601
Local, St & Fed Agency Receivable	8,275	16,126
Due From Other Funds		69,380
Prepaid Expense	35,057	33,304
Property, Plant & Equipment	24,791,755	23,915,912
Deferred Outflows	2,267,905	886,346
TOTAL ASSETS AND OTHER DEBITS:	84,113,014	79,904,019
Liabilities, equity and other credits		
LIABILITIES:		
Accounts Payable	-50,520	-40,494
Employee Benefits Payable	173,650	200,701
Payroll Taxes Payable	-	-
Accrued Liabilities		
Deferred Revenue	441,273	489,137
Long Term Debt	2,294,087	2,589,670
Net Pension Liability	5,747,658	5,031,677
Deposits Payable	341,961	330,878
Due To Other Funds		69,380
Scholarships-Designated Donations	35,929	-88,889
Scholarships-Non-designated	735,436	85,407
Donatio		
Deferred Inflows	2,169,564	1,538,983
TOTAL LIABILITIES:	11,889,037	10,206,451
EQUITY AND OTHER CREDITS:		
Control Accounts	238	152
Fund Balances		
Prior Year Fund Balance	7,422,869	7,029,039
Endowment Fund-Original		
Endowment Fund-Income		
FB Professional Development		
FB Salary Equity		
FB Capital Equipment	16,374,011	14,214,818
FB Investment Gain And Loss		
Fund Balance Receivables		
Reserved-Undesignated		
FBTC Operating Fund Balance		

REPORT FGRCOBS
COAS: W
FISCAL YEAR: 17

Wharton County Junior College
Combined Balance Sheet--All Fund Types and Account Groups
30-Nov-2016
(With comparative totals for 30-Nov-2015)
(amounts expressed in dollars)

RUN DATE: 12/12/2016
TIME: 08:58:36 AM
PAGE: 10

Memorandum Only

	Current Year 2017	Prior Year 2016
Plant Fund Balance		
Bond Fund Balance		
Scholarship		
Fund Balance-Rounding Diff	-	-
Fund Balances:		
Reserve for Encumbrance	1,892,169	1,539,191
Fund Balance	46,534,691	46,914,368
Reserve For Operations		
TOTAL EQUITY AND OTHER CREDITS:	72,223,977	69,697,568
TOTAL LIABILITIES, EQUITY AND OTHER CREDITS:	84,113,014	79,904,019
	=====	=====