



RECEIVED OCT 27 2018

**Shareholders:**  
Gregory J. Sawko  
Mark A. Burroughs

1172 Bent Oaks Drive  
Denton, Texas 76210

[www.DentonLawyer.com](http://www.DentonLawyer.com)

(940) 382-4357 Telephone  
(940) 591-0991 Telecopy

[AttyBurroughs@DentonLawyer.com](mailto:AttyBurroughs@DentonLawyer.com)

October 19, 2018

The Board of Trustees,  
Dr. Jamie Wilson, Superintendent  
Debbie Monschke, E.D. of Administrative Services  
Denton Independent School District  
1307 North Locust  
Denton, Texas 76201

RE: Property Tax Attorney Activity Report for Tax Year 2017-2018

Dear Members of the Board, Superintendent Wilson and E.D. Monschke:

Another twelve months has passed, and it is again my privilege to present our delinquent ad valorem property tax collections year-end report to Denton Independent School District. We are very proud at Sawko & Burroughs, P.C. to represent DISD as your property tax attorneys for this highly specialized service. The following report is for the tax fiscal year ending September 30, 2018.

The 2017-2018 collections year once again brought current-year delinquent collections (in this case for 2017 taxes) to an all-time high, hitting **99.60%**, which is a record high for the District for the second year in a row! The last nine years running are the first years that records show Denton ISD ever exceeded a 99% collections rate on current-year taxes during the 12 months following the levy. Less than one million dollars (**\$959,382** to be exact) of the entire 2017 adjusted levy of **\$245,737,977** remains for us to collect!

As to the years prior to 2017, the collections rate once again hit a good number at **30%**. I need to reference several factors generally affecting your tax roll, however. As in recent prior years, a large number of taxpayers are taking advantage of the "over-65 deferral/abatement" provided as a taxpayer relief measure under the Texas Property Tax Code. These now comprise nearly 30% (\$729,904) of the entire pre-2017 delinquency roll and are exempt from any legal action until taken out of that status by action of the taxpayer. Only reduced interest and no penalties are assessed accounts with a tax deferral, and such a deferral can extend indefinitely. Also, tax accounts added or modified by the Denton Central Appraisal District resulting in a new, later delinquency date are not subject to collections activity until statutory grace periods pass. These accounts alone comprise another 20% of the entire delinquency roll. We are not provided individual explanations by DCAD for these status designations. In each of these

The Board of Trustees  
Jamie Wilson  
Debbie Monschke  
Page Two  
October 19, 2018

instances, the taxes involved appear in the reports as “delinquent” but in fact are not. As a result, a growing percentage of accounts exist which skew collections figures noticeably.

Because of these deferrals, abatements and alternate delinquency date accounts, starting out we can only actually pursue about 51% of that pre-2017 delinquency roll *before* taking into account bankruptcies, uncollectible personal property and mobile home accounts, etc. Adding these uncollectible and filed bankruptcy accounts, (which total another \$403,211), to the abatements and different delinquency date accounts, comes up to a total of **\$1,675,509**. This means that 63% of the entire \$2,655,705 balance of the 2016 and prior delinquency roll for DISD cannot be actively enforced for collection, although they show up as “delinquent” on the Tax Office reports. The result is that the collections rate for pre-2016 tax years is distorted when looking strictly at the Tax Office summaries. We are left to work with an ever shrinking balance of actual collectibles due on DISD tax accounts.

DISD also continues to experience an extraordinarily high level of refunds paid back to taxpayers by the Denton County Tax Office for DISD. In 2014, the total refunds hit what was then a new high of \$707,361. In 2015, that total leaped to \$1,720,886. In 2016, the total jumped again to \$2,187,763. Last year, that sum was \$1,806,832. Now, for tax year 2018, an all-time high of refunds was hit at \$2,437,113 during the year. To put in perspective, this same refund total was only at \$195,000 at the 2009 tax year-end. Refunds are deducted from the “paid” totals, which payments were often induced by our activities working for you. This further also tends to skew the year-end performance outcome indicators. We receive no explanations for refunds from the Tax Office, although I believe the District must approve refunds over certain dollar amounts (but for refunds falling into other categories of reimbursement not requiring such approval, such as DCAD-ordered deletions, court removal of taxes, etc.).

The last several years I pointed out another significant occurrence in tax assessment for the District in the form of Denton County Tax Office “Adjustments” to the tax roll. These are generally supplements and deletions due primarily to Appraisal District action. Although positive “Adjustments” may end up as delinquent, they are often legally current and nearly all pay before actual delinquency and turnover to our firm. The last six years of “Adjustments” are as follows: **2012** \$1,132,576; **2013** \$4,329,998; **2014** \$2,837,169; **2015** \$4,178,021; **2016** \$2,167,542; **2017** \$9,789,764; and **2018** \$7,232,299. DCAD “Supplements” are often rollback taxes or omitted property being added to the roll. In any case, the figure this year is huge and represents another qualifier to actual “delinquency” figures depending on when they were added to the roll.

As is customary with this report, we are enclosing our office’s unique breakdown of delinquent taxes splitting out current-year delinquent 2017 taxes from 2016 and prior year taxes due, allocated by collections activity. Also enclosed is our “TWENTY-FOUR YEAR COLLECTION HISTORY” (which includes several years before Sawko & Burroughs, P.C. represented the District), to provide a more complete picture of this past year’s collections totals compared with previous collection years.

The total unpaid tax balance for all years (including current) for DISD as of September 30, 2018 stands at **\$3,615,088** according to the latest Tax Office report, a sum lower than last year by almost \$200,000. All taxpayers owing unpaid taxes have actually been contacted or had multiple attempts to contact them made by our firm (but for accounts we are prevented from performing collections services upon). Additionally, for your information, so long as a taxpayer is in communication with us and is

The Board of Trustees  
Jamie Wilson  
Debbie Monschke  
Page Three  
October 19, 2018

engaged in resolving their unpaid balance in a reasonable manner, we do not take any otherwise avoidable enforcement action.

The great majority of assailable accounts remaining due have had specific legal processing undertaken. The following identifies the associated status of legal enforcement activities (this synthesizes several detailed reports enclosed herewith):

<u>Status</u>	<u>2016 and Prior</u>	<u>2017 Only</u>
Bankrupt (wherein we represent DISD)	\$ 98,100	\$ 15,594
Lawsuits/judgments/tax sales ongoing	\$662,919	\$249,937
Legally uncollectible	\$305,111	\$ 83
Over-65, disabled deferrals/exemptions/ abatements/payment agreements	\$777,101	\$174,686
Hold status/different delinquency date	\$551,405	\$ 94,739
Awaiting legal action	\$243,533	\$413,762*

\*These 2017 accounts were primarily turned over to us for collections enforcement after July 1, 2018

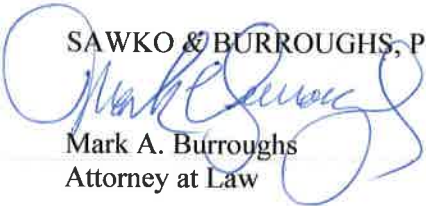
As we have noted in the past, a relevant fact about your prior-year taxes is that a majority of those accounts are personal property (and mobile home) taxes, the real properties having been in great measure collected. In turn, the great majority of those remaining personal property accounts are actually uncollectible due to business closure, bankruptcy, move-out, passage of statute of limitations, etc. At the same time, for current-year delinquent 2017 taxes still unpaid, over 70% are real property accounts (\$675,976 of a total \$948,825), which are almost always eventually collectible.

It bears repeating that we are extremely proud to serve the Denton Independent School District, and you are very important to us as a client. We are always at your disposal to answer your questions or concerns and to accept your direction as to how to serve you and the District better. It is one of several distinct advantages of having a local professional service provider that happens to be one of the most experienced, respected property tax legal counsel in this State. Please feel free to contact us at any time in this regard. Also, we would very much like to come before the Board at any time in order to provide an opportunity for "Q&A", discuss litigation-related issues and to take direction from Trustees and Administration directly. It has been quite some time since we made such an appearance.

As always, thank you very much for your service to the School District, to our children and to the community.

Sincerely,

SAWKO & BURROUGHS, P.C.

  
Mark A. Burroughs  
Attorney at Law

MAB/gcy  
Enclosures

G/Tax/CurrentJurisdictions/DISD/Correspondence/JurisdictionVIP/Board/Board- 2017-2018 Year-End Report

## **EXPLANATION OF STATUS CODES**

---

- **Auction-** Accounts coded as foreclosed property with some balance showing due.
- **Bankruptcy-** Accounts that are involved in an active bankruptcy
- **Currently at Research-** Accounts selected for legal action, sent for title research.
- **Different Delinquency Date-** Accounts having a delinquent date different from the standard February 1<sup>st</sup>.
- **Exempt-** Accounts exempt from taxation.
- **Intervention-** Accounts where we as Plaintiff intervened in Co-Plaintiff's judgment.
- **Judgment-** Accounts that have a judgment but not foreclosed upon.
- **Newly Added Record-** Accounts newly added to tax roll, thus our system.
- **No Action Taken -** Accounts that have no action taken against them.
- **On Hold-** Accounts that have been placed on hold for various reasons.
- **Over 65/Disabled-** Accounts that have an Over 65 in age or Disability Exemption applied to their property.
- **Paid-** Accounts that have received payment between updates from the Tax Office.
- **Payment Agreement-** Accounts that have entered into a payment agreement.
- **Probate-** Currently in probate court, awaiting disposition of tax payment
- **Quarterly Taxpayer-** Accounts paying tax on a quarterly basis (on hold).
- **Returned Mail-** Accounts where we have received returned mail.
- **Rollback Account-** Accounts where an Agriculture Exemption has been removed and previous 5 years tax can now be collected.
- **Suit 1-Filed-** Accounts where a lawsuit has been filed.
- **Suit 2-Citation-** Accounts under suit with citations issued.
- **Suit 3-Final Hearing-** Accounts under suit which are scheduled for trial.
- **Suit-Rollback-** Accounts under suit where Rollbacks were applied.
- **Taxes Paid-Fees Due-** Accounts that have zero taxes due but outstanding Court costs.
- **Trust Account-** Accounts being held in Trust by the Taxing Authority as a result of going to Auction and not being sold.
- **Uncollectable-** Accounts deemed legally or practically uncollectable.

# **Denton Independent School District**

## **Summary by Year by Property Type**

<i>1986</i>	Real Estate	1 properties	\$7.41
	Totals	1 properties	\$7.41
<i>1987</i>	Real Estate	1 properties	\$11.67
	Totals	1 properties	\$11.67
<i>1988</i>	Real Estate	1 properties	\$12.57
	Totals	1 properties	\$12.57
<i>1989</i>	Real Estate	1 properties	\$16.13
	Totals	1 properties	\$16.13
<i>1990</i>	Real Estate	1 properties	\$18.60
	Totals	1 properties	\$18.60
<i>1991</i>	Real Estate	1 properties	\$8.48
	Totals	1 properties	\$8.48
<i>1992</i>	Real Estate	1 properties	\$9.47
	Totals	1 properties	\$9.47
<i>1993</i>	Real Estate	2 properties	\$44.75
	Totals	2 properties	\$44.75
<i>1994</i>	Real Estate	3 properties	\$87.12
	Totals	3 properties	\$87.12
<i>1995</i>	Real Estate	3 properties	\$90.18
	Totals	3 properties	\$90.18
<i>1996</i>	Real Estate	5 properties	\$661.60
	Totals	5 properties	\$661.60
<i>1997</i>	Mobile Home	4 properties	\$552.13
	Personal	1 properties	\$18.46
	Real Estate	13 properties	\$1,382.45
	Totals	18 properties	\$1,953.04
<i>1998</i>	Mobile Home	5 properties	\$712.04
	Personal	2 properties	\$399.03
	Real Estate	16 properties	\$2,678.40
	Totals	23 properties	\$3,789.47
<i>1999</i>	Mobile Home	5 properties	\$612.08
	Personal	3 properties	\$450.27
	Real Estate	18 properties	\$2,899.26
	Totals	26 properties	\$3,961.61
<i>2000</i>	Mobile Home	5 properties	\$663.92
	Personal	4 properties	\$894.71
	Real Estate	19 properties	\$3,253.01
	Totals	28 properties	\$4,811.64

# **Denton Independent School District**

## **Summary by Year by Property Type**

2001	Mobile Home	9 properties	\$2,154.43
	Personal	6 properties	\$1,841.75
	Real Estate	21 properties	\$4,151.34
	Totals	36 properties	\$8,147.52
2002	Mineral	2 properties	\$3,244.29
	Mobile Home	14 properties	\$2,922.08
	Personal	6 properties	\$7,668.54
	Real Estate	28 properties	\$9,813.36
Totals	50 properties	\$23,648.27	
2003	Mineral	2 properties	\$194.30
	Mobile Home	19 properties	\$3,472.48
	Personal	14 properties	\$8,605.67
	Real Estate	28 properties	\$11,121.34
Totals	63 properties	\$23,393.79	
2004	Mineral	5 properties	\$1,512.45
	Mobile Home	20 properties	\$3,889.10
	Personal	17 properties	\$20,274.44
	Real Estate	28 properties	\$12,522.26
Totals	70 properties	\$38,198.25	
2005	Mineral	11 properties	\$2,270.16
	Mobile Home	24 properties	\$4,556.97
	Personal	18 properties	\$18,464.37
	Real Estate	30 properties	\$18,473.22
Totals	83 properties	\$43,764.72	
2006	Mineral	16 properties	\$5,628.39
	Mobile Home	30 properties	\$5,122.40
	Personal	28 properties	\$19,213.87
	Real Estate	37 properties	\$22,848.13
Totals	111 properties	\$52,812.79	
2007	Mineral	21 properties	\$2,163.62
	Mobile Home	133 properties	\$16,228.84
	Personal	202 properties	\$57,444.26
	Real Estate	48 properties	\$38,009.70
Totals	404 properties	\$113,846.42	
2008	Mineral	18 properties	\$1,372.76
	Mobile Home	127 properties	\$16,000.89
	Personal	245 properties	\$138,774.44
	Real Estate	46 properties	\$42,531.24
Totals	436 properties	\$198,679.33	
2009	Mineral	59 properties	\$2,324.14
	Mobile Home	114 properties	\$12,767.88
	Personal	232 properties	\$109,246.08

# **Denton Independent School District**

## **Summary by Year by Property Type**

<i>2009</i>	Real Estate	60 properties	\$55,382.55
	Totals	465 properties	\$179,720.65
<i>2010</i>	Mineral	38 properties	\$1,076.49
	Mobile Home	93 properties	\$9,409.32
	Personal	226 properties	\$89,031.12
	Real Estate	77 properties	\$73,150.86
	Totals	434 properties	\$172,667.79
<i>2011</i>	Mineral	53 properties	\$1,608.67
	Mobile Home	56 properties	\$4,535.59
	Personal	194 properties	\$121,206.92
	Real Estate	84 properties	\$76,239.31
	Totals	387 properties	\$203,590.49
<i>2012</i>	Mineral	51 properties	\$1,246.19
	Mobile Home	59 properties	\$5,573.48
	Personal	149 properties	\$139,602.30
	Real Estate	81 properties	\$83,053.11
	Totals	340 properties	\$229,475.08
<i>2013</i>	Mineral	32 properties	\$2,655.06
	Mobile Home	58 properties	\$5,227.27
	Personal	153 properties	\$112,857.06
	Real Estate	104 properties	\$107,929.25
	Totals	347 properties	\$228,668.64
<i>2014</i>	Mineral	41 properties	\$1,572.71
	Mobile Home	87 properties	\$8,452.06
	Personal	235 properties	\$145,446.00
	Real Estate	136 properties	\$142,858.98
	Totals	499 properties	\$298,329.75
<i>2015</i>	Mineral	125 properties	\$7,436.05
	Mobile Home	105 properties	\$9,518.89
	Personal	285 properties	\$162,917.18
	Real Estate	167 properties	\$178,480.14
	Totals	682 properties	\$358,352.26
<i>2016</i>	Mineral	134 properties	\$4,078.67
	Mobile Home	152 properties	\$13,756.44
	Personal	350 properties	\$193,174.71
	Real Estate	243 properties	\$238,377.91
	Totals	879 properties	\$449,387.73
<i>2017</i>	Mineral	284 properties	\$9,340.12
	Mobile Home	248 properties	\$25,996.51
	Personal	424 properties	\$237,512.52
	Real Estate	590 properties	\$675,975.93

## ***Denton Independent School District Summary by Year by Property Type***

---

Totals	1546 properties	\$948,825.08
--------	-----------------	--------------

---

<b>Totals</b>	6947 properties	<b>\$3,586,992.30</b>
---------------	-----------------	-----------------------

---

## ***Denton Independent School District Summary of All Years***

Mineral	892 properties	\$47,724.07
Mobile Home	1367 properties	\$152,124.80
Personal	2794 properties	\$1,585,043.70
Real Estate	1894 properties	\$1,802,099.73

---

<b>Totals</b>	6947 properties	<b>\$3,586,992.30</b>
---------------	-----------------	-----------------------

---



# Denton ISD Report for Year 2017 Only - All Properties

Account Status	As of 02/01/2018		As of 09/30/2018		Net Change	
	Properties	Tax Due	Properties	Tax Due	Properties	Tax Due
Auction	3	\$4,942.32	5	\$6,579.42	2	\$1,637.10
Bankruptcy	8	\$7,898.09	14	\$15,594.34	6	\$7,696.25
Currently at Research	17	\$26,992.63	2	\$1,399.95	-15	(\$25,592.68)
Different Delinquency Date	90	\$96,296.13	166	\$91,714.58	76	(\$4,581.55)
Hold	5	\$13,778.71	5	\$3,023.60	0	(\$10,755.11)
Intervention	7	\$10,310.67	7	\$13,865.02	0	\$3,554.35
Judgement	123	\$115,416.96	101	\$71,402.70	-22	(\$44,014.26)
No Action Taken	4678	\$6,461,045.68	1076	\$413,761.92	-3602	(\$6,047,283.76)
Over 65/Disabled	79	\$152,912.71	71	\$134,044.09	-8	(\$18,868.62)
Partial Payment Agreement	26	\$58,142.56	29	\$40,641.93	3	(\$17,500.63)
Probate	5	\$4,303.48	2	\$9,425.43	-3	\$5,121.95
Suit 1	21	\$45,036.26	26	\$46,726.45	5	\$1,690.19
Suit 2	35	\$93,585.48	31	\$91,354.37	-4	(\$2,231.11)
Suit 3	4	\$796.92	8	\$9,184.79	4	\$8,387.87
Taxes Paid - Fees Due	3	\$6,804.74	1	\$23.10	-2	(\$6,781.64)
Uncollectable	2	\$83.39	2	\$83.39	0	\$0.00
<b>Totals for Denton ISD</b>	<b>5106</b>	<b>\$7,098,346.73</b>	<b>1546</b>	<b>\$948,825.08</b>	<b>-3560</b>	<b>(\$6,149,521.65)</b>

## Denton ISD Report for Year 2017 Only - Mineral Properties

As of 02/01/2018

Account Status	Properties	Tax Due
Bankruptcy	1	\$2.77
Different Delinquency Date	7	\$92.84
Judgement	1	\$72.38
No Action Taken	892	\$55,637.44
Suit 1	1	\$23.56
Suit 3	3	\$549.78
Taxes Paid - Fees Due	1	\$23.10
<b>Totals for Mineral Properties</b>	<b>906</b>	<b>\$56,401.87</b>

As of 09/30/2018

Properties	Tax Due
5	\$101.34
3	\$18.47
1	\$72.38
270	\$8,551.49
1	\$23.56
3	\$549.78
1	\$23.10
<b>284</b>	<b>\$9,340.12</b>

Net Change

Properties	Tax Due
4	\$98.57
-4	(\$74.37)
0	\$0.00
-622	(\$47,085.95)
0	\$0.00
0	\$0.00
0	\$0.00
<b>-622</b>	<b>(\$47,061.75)</b>

## Denton ISD Report for Year 2017 Only - Mobile Home Properties

As of 02/01/2018

Account Status	Properties	Tax Due
Bankruptcy	1	\$105.95
Currently at Research	1	\$47.29
Different Delinquency Date	2	\$303.54
Intervention	1	\$41.60
Judgement	48	\$5,547.20
No Action Taken	586	\$65,956.54
Suit 2	6	\$679.26
<b>Totals for Mobile Home Properties</b>	<b>645</b>	<b>\$72,681.38</b>

As of 09/30/2018

Properties	Tax Due
1	\$105.95
0	\$0.00
2	\$597.72
0	\$0.00
42	\$4,796.94
201	\$19,968.24
2	\$527.66
<b>248</b>	<b>\$25,996.51</b>

Net Change

Properties	Tax Due
0	\$0.00
-1	(\$47.29)
0	\$294.18
-1	(\$41.60)
-6	(\$750.26)
-385	(\$45,988.30)
-4	(\$151.60)
<b>-397</b>	<b>(\$46,684.87)</b>

## Denton ISD Report for Year 2017 Only - Personal Properties

As of 02/01/2018

Account Status	Properties	Tax Due
Bankruptcy	1	\$307.36
Currently at Research	9	\$9,688.39
Different Delinquency Date	11	\$33,120.90
Hold	3	\$1,199.78
Intervention	5	\$8,578.40
Judgement	33	\$23,449.12
No Action Taken	918	\$821,261.00
Suit 1	13	\$26,503.32
Suit 2	9	\$25,975.50
Suit 3	0	\$0.00
Uncollectable	1	\$69.30

**Totals for Personal Properties** 1003 \$950,153.07

As of 09/30/2018

Properties	Tax Due
3	\$7,415.64
0	\$0.00
18	\$40,686.56
4	\$2,258.87
6	\$13,243.15
27	\$16,866.82
328	\$96,078.57
19	\$37,328.66
14	\$17,110.29
4	\$6,454.66
1	\$69.30

424 \$237,512.52

Net Change

Properties	Tax Due
2	\$7,108.28
-9	(\$9,688.39)
7	\$7,565.66
1	\$1,059.09
1	\$4,664.75
-6	(\$6,582.30)
-590	(\$725,182.43)
6	\$10,825.34
5	(\$8,865.21)
4	\$6,454.66
0	\$0.00

-579 (\$712,640.55)

## Denton ISD Report for Year 2017 Only - Real Estate Properties

As of 02/01/2018

Account Status	Properties	Tax Due
Auction	3	\$4,942.32
Bankruptcy	5	\$7,482.01
Currently at Research	7	\$17,256.95
Different Delinquency Date	70	\$62,778.85
Hold	2	\$12,578.93
Intervention	1	\$1,690.67
Judgement	41	\$86,348.26
No Action Taken	2282	\$5,518,190.70
Over 65/Disabled	79	\$152,912.71
Partial Payment Agreement	26	\$58,142.56
Probate	5	\$4,303.48
Suit 1	7	\$18,509.38
Suit 2	20	\$66,930.72
Suit 3	1	\$247.14
Taxes Paid - Fees Due	2	\$6,781.64
Uncollectable	1	\$14.09

**Totals for Real Estate Properties** 2552 \$6,019,110.41

As of 09/30/2018

Properties	Tax Due
5	\$6,579.42
5	\$7,971.41
2	\$1,399.95
143	\$50,411.83
1	\$764.73
1	\$621.87
31	\$49,666.56
277	\$289,163.62
71	\$134,044.09
29	\$40,641.93
2	\$9,425.43
6	\$9,374.23
15	\$73,716.42
1	\$2,180.35
0	\$0.00
1	\$14.09

590 \$675,975.93

Net Change

Properties	Tax Due
2	\$1,637.10
0	\$489.40
-5	(\$15,857.00)
73	(\$12,367.02)
-1	(\$11,814.20)
0	(\$1,068.80)
-10	(\$36,681.70)
-2005	(\$5,229,027.08)
-8	(\$18,868.62)
3	(\$17,500.63)
-3	\$5,121.95
-1	(\$9,135.15)
-5	\$6,785.70
0	\$1,933.21
-2	(\$6,781.64)
0	\$0.00

-1962 (\$5,343,134.48)

---

**Totals for Denton ISD**

5106 \$7,098,346.73

1546 \$948,825.08

-3560 (\$6,149,521.65)

---

## Denton ISD Report for Years 2016 & Prior - All Properties

Account Status	As of 10/1/2017		As of 09/30/2018		Net Change	
	Properties	Tax Due	Properties	Tax Due	Properties	Tax Due
Auction	2	\$4,247.23	4	\$13,160.68	2	\$8,913.45
Bankruptcy	34	\$110,100.28	31	\$98,099.77	-3	(\$12,000.51)
Currently at Research	14	\$7,044.21	1	\$584.69	-13	(\$6,459.52)
Different Delinquency Date	243	\$597,904.26	127	\$542,413.57	-116	(\$55,490.69)
Exempt	61	\$10,473.07	55	\$10,096.75	-6	(\$376.32)
Hold	7	\$15,013.26	6	\$8,991.17	-1	(\$6,022.09)
Intervention	26	\$70,299.42	12	\$35,683.11	-14	(\$34,616.31)
Judgement	230	\$609,884.20	214	\$499,136.54	-16	(\$110,747.66)
No Action Taken	1887	\$583,118.20	1295	\$243,532.91	-592	(\$339,585.29)
Over 65/Disabled	91	\$832,618.98	86	\$729,904.22	-5	(\$102,714.76)
Partial Payment Agreement	37	\$72,934.63	16	\$37,100.34	-21	(\$35,834.29)
Probate	1	\$3,747.99	2	\$18,602.76	1	\$14,854.77
Suit 1	26	\$64,260.09	23	\$32,996.24	-3	(\$31,263.85)
Suit 2	55	\$151,728.15	32	\$45,854.83	-23	(\$105,873.32)
Suit 3	25	\$19,033.00	10	\$9,023.59	-15	(\$10,009.41)
Trust Account	8	\$7,876.75	8	\$7,874.88	0	(\$1.87)
Uncollectable	604	\$362,511.88	482	\$305,111.17	-122	(\$57,400.71)
<b>Totals for Denton ISD</b>	<b>3351</b>	<b>\$3,522,795.60</b>	<b>2404</b>	<b>\$2,638,167.22</b>	<b>-947</b>	<b>(\$884,628.38)</b>

# Denton ISD Report for Year 2017 Only - All Properties

Account Status	As of 02/01/2018		As of 09/30/2018		Net Change	
	Properties	Tax Due	Properties	Tax Due	Properties	Tax Due
Auction	3	\$4,942.32	5	\$6,579.42	2	\$1,637.10
Bankruptcy	8	\$7,898.09	14	\$15,594.34	6	\$7,696.25
Currently at Research	17	\$26,992.63	2	\$1,399.95	-15	(\$25,592.68)
Different Delinquency Date	90	\$96,296.13	166	\$91,714.58	76	(\$4,581.55)
Hold	5	\$13,778.71	5	\$3,023.60	0	(\$10,755.11)
Intervention	7	\$10,310.67	7	\$13,865.02	0	\$3,554.35
Judgement	123	\$115,416.96	101	\$71,402.70	-22	(\$44,014.26)
No Action Taken	4678	\$6,461,045.68	1076	\$413,761.92	-3602	(\$6,047,283.76)
Over 65/Disabled	79	\$152,912.71	71	\$134,044.09	-8	(\$18,868.62)
Partial Payment Agreement	26	\$58,142.56	29	\$40,641.93	3	(\$17,500.63)
Probate	5	\$4,303.48	2	\$9,425.43	-3	\$5,121.95
Suit 1	21	\$45,036.26	26	\$46,726.45	5	\$1,690.19
Suit 2	35	\$93,585.48	31	\$91,354.37	-4	(\$2,231.11)
Suit 3	4	\$796.92	8	\$9,184.79	4	\$8,387.87
Taxes Paid - Fees Due	3	\$6,804.74	1	\$23.10	-2	(\$6,781.64)
Uncollectable	2	\$83.39	2	\$83.39	0	\$0.00
<b>Totals for Denton ISD</b>	<b>5106</b>	<b>\$7,098,346.73</b>	<b>1546</b>	<b>\$948,825.08</b>	<b>-3560</b>	<b>(\$6,149,521.65)</b>

## Denton ISD Report for Year 2017 Only - Mineral Properties

As of 02/01/2018

Account Status	Properties	Tax Due
Bankruptcy	1	\$2.77
Different Delinquency Date	7	\$92.84
Judgement	1	\$72.38
No Action Taken	892	\$55,637.44
Suit 1	1	\$23.56
Suit 3	3	\$549.78
Taxes Paid - Fees Due	1	\$23.10
<b>Totals for Mineral Properties</b>	<b>906</b>	<b>\$56,401.87</b>

As of 09/30/2018

Properties	Tax Due
5	\$101.34
3	\$18.47
1	\$72.38
270	\$8,551.49
1	\$23.56
3	\$549.78
1	\$23.10
<b>284</b>	<b>\$9,340.12</b>

Net Change

Properties	Tax Due
4	\$98.57
-4	(\$74.37)
0	\$0.00
-622	(\$47,085.95)
0	\$0.00
0	\$0.00
0	\$0.00
<b>-622</b>	<b>(\$47,061.75)</b>

## Denton ISD Report for Year 2017 Only - Mobile Home Properties

As of 02/01/2018

Account Status	Properties	Tax Due
Bankruptcy	1	\$105.95
Currently at Research	1	\$47.29
Different Delinquency Date	2	\$303.54
Intervention	1	\$41.60
Judgement	48	\$5,547.20
No Action Taken	586	\$65,956.54
Suit 2	6	\$679.26
<b>Totals for Mobile Home Properties</b>	<b>645</b>	<b>\$72,681.38</b>

As of 09/30/2018

Properties	Tax Due
1	\$105.95
0	\$0.00
2	\$597.72
0	\$0.00
42	\$4,796.94
201	\$19,968.24
2	\$527.66
<b>248</b>	<b>\$25,996.51</b>

Net Change

Properties	Tax Due
0	\$0.00
-1	(\$47.29)
0	\$294.18
-1	(\$41.60)
-6	(\$750.26)
-385	(\$45,988.30)
-4	(\$151.60)
<b>-397</b>	<b>(\$46,684.87)</b>

## Denton ISD Report for Year 2017 Only - Personal Properties

As of 02/01/2018

Account Status	Properties	Tax Due
Bankruptcy	1	\$307.36
Currently at Research	9	\$9,688.39
Different Delinquency Date	11	\$33,120.90
Hold	3	\$1,199.78
Intervention	5	\$8,578.40
Judgement	33	\$23,449.12
No Action Taken	918	\$821,261.00
Suit 1	13	\$26,503.32
Suit 2	9	\$25,975.50
Suit 3	0	\$0.00
Uncollectable	1	\$69.30

**Totals for Personal Properties** 1003 \$950,153.07

As of 09/30/2018

Properties	Tax Due
3	\$7,415.64
0	\$0.00
18	\$40,686.56
4	\$2,258.87
6	\$13,243.15
27	\$16,866.82
328	\$96,078.57
19	\$37,328.66
14	\$17,110.29
4	\$6,454.66
1	\$69.30

424 \$237,512.52

Net Change

Properties	Tax Due
2	\$7,108.28
-9	(\$9,688.39)
7	\$7,565.66
1	\$1,059.09
1	\$4,664.75
-6	(\$6,582.30)
-590	(\$725,182.43)
6	\$10,825.34
5	(\$8,865.21)
4	\$6,454.66
0	\$0.00

-579 (\$712,640.55)

## Denton ISD Report for Year 2017 Only - Real Estate Properties

As of 02/01/2018

Account Status	Properties	Tax Due
Auction	3	\$4,942.32
Bankruptcy	5	\$7,482.01
Currently at Research	7	\$17,256.95
Different Delinquency Date	70	\$62,778.85
Hold	2	\$12,578.93
Intervention	1	\$1,690.67
Judgement	41	\$86,348.26
No Action Taken	2282	\$5,518,190.70
Over 65/Disabled	79	\$152,912.71
Partial Payment Agreement	26	\$58,142.56
Probate	5	\$4,303.48
Suit 1	7	\$18,509.38
Suit 2	20	\$66,930.72
Suit 3	1	\$247.14
Taxes Paid - Fees Due	2	\$6,781.64
Uncollectable	1	\$14.09

**Totals for Real Estate Properties** 2552 \$6,019,110.41

As of 09/30/2018

Properties	Tax Due
5	\$6,579.42
5	\$7,971.41
2	\$1,399.95
143	\$50,411.83
1	\$764.73
1	\$621.87
31	\$49,666.56
277	\$289,163.62
71	\$134,044.09
29	\$40,641.93
2	\$9,425.43
6	\$9,374.23
15	\$73,716.42
1	\$2,180.35
0	\$0.00
1	\$14.09

590 \$675,975.93

Net Change

Properties	Tax Due
2	\$1,637.10
0	\$489.40
-5	(\$15,857.00)
73	(\$12,367.02)
-1	(\$11,814.20)
0	(\$1,068.80)
-10	(\$36,681.70)
-2005	(\$5,229,027.08)
-8	(\$18,868.62)
3	(\$17,500.63)
-3	\$5,121.95
-1	(\$9,135.15)
-5	\$6,785.70
0	\$1,933.21
-2	(\$6,781.64)
0	\$0.00

-1962 (\$5,343,134.48)



---

**Totals for Denton ISD**

5106 \$7,098,346.73

1546 \$948,825.08

-3560 (\$6,149,521.65)

---

## Denton ISD Report for Years 2016 & Prior - All Properties

Account Status	As of 10/1/2017		As of 09/30/2018		Net Change	
	Properties	Tax Due	Properties	Tax Due	Properties	Tax Due
Auction	2	\$4,247.23	4	\$13,160.68	2	\$8,913.45
Bankruptcy	34	\$110,100.28	31	\$98,099.77	-3	(\$12,000.51)
Currently at Research	14	\$7,044.21	1	\$584.69	-13	(\$6,459.52)
Different Delinquency Date	243	\$597,904.26	127	\$542,413.57	-116	(\$55,490.69)
Exempt	61	\$10,473.07	55	\$10,096.75	-6	(\$376.32)
Hold	7	\$15,013.26	6	\$8,991.17	-1	(\$6,022.09)
Intervention	26	\$70,299.42	12	\$35,683.11	-14	(\$34,616.31)
Judgement	230	\$609,884.20	214	\$499,136.54	-16	(\$110,747.66)
No Action Taken	1887	\$583,118.20	1295	\$243,532.91	-592	(\$339,585.29)
Over 65/Disabled	91	\$832,618.98	86	\$729,904.22	-5	(\$102,714.76)
Partial Payment Agreement	37	\$72,934.63	16	\$37,100.34	-21	(\$35,834.29)
Probate	1	\$3,747.99	2	\$18,602.76	1	\$14,854.77
Suit 1	26	\$64,260.09	23	\$32,996.24	-3	(\$31,263.85)
Suit 2	55	\$151,728.15	32	\$45,854.83	-23	(\$105,873.32)
Suit 3	25	\$19,033.00	10	\$9,023.59	-15	(\$10,009.41)
Trust Account	8	\$7,876.75	8	\$7,874.88	0	(\$1.87)
Uncollectable	604	\$362,511.88	482	\$305,111.17	-122	(\$57,400.71)
<b>Totals for Denton ISD</b>	<b>3351</b>	<b>\$3,522,795.60</b>	<b>2404</b>	<b>\$2,638,167.22</b>	<b>-947</b>	<b>(\$884,628.38)</b>

# Denton ISD Report for Years 2016 & Prior - Mineral Properties

As of 10/01/2017

Account Status	Properties	Tax Due
Bankruptcy	9	\$1,570.90
Currently at Research	5	\$579.04
Different Delinquency Date	0	\$0.00
Different Delinquency Date	50	\$6,858.48
Exempt	6	\$130.80
Exempt	0	\$0.00
Intervention	1	\$87.60
Judgement	52	\$46,743.34
No Action Taken	527	\$48,415.21
Over 65/Disabled	2	\$1,582.54
Suit 1	0	\$0.00
Suit 1	9	\$1,047.60
Suit 2	9	\$2,701.76
Suit 3	0	\$0.00
Suit 3	17	\$8,266.22
Uncollectable	0	\$0.00
Uncollectable	10	\$5,766.76
<b>Totals for Mineral Properties</b>	<b>697</b>	<b>\$123,750.25</b>

As of 09/30/2018

Properties	Tax Due
11	\$833.66
0	\$0.00
44	\$6,187.92
0	\$0.00
0	\$0.00
6	\$130.80
0	\$0.00
7	\$4,671.34
287	\$15,703.29
0	\$0.00
8	\$726.60
0	\$0.00
0	\$0.00
5	\$4,363.58
0	\$0.00
10	\$5,766.76
0	\$0.00
<b>378</b>	<b>\$38,383.95</b>

Net Change

Properties	Tax Due
2	(\$737.24)
-5	(\$579.04)
44	\$6,187.92
-50	(\$6,858.48)
-6	(\$130.80)
6	\$130.80
-1	(\$87.60)
-45	(\$42,072.00)
-240	(\$32,711.92)
-2	(\$1,582.54)
8	\$726.60
-9	(\$1,047.60)
-9	(\$2,701.76)
5	\$4,363.58
-17	(\$8,266.22)
10	\$5,766.76
-10	(\$5,766.76)
<b>-319</b>	<b>(\$85,366.30)</b>

## Denton ISD Report for Years 2016 & Prior - Mobile Home Properties

As of 10/01/2017

Account Status	Properties	Tax Due
Bankruptcy	0	\$0.00
Different Delinquency Date	3	\$2,806.12
Different Delinquency Date	0	\$0.00
Intervention	0	\$0.00
Intervention	3	\$1,053.31
Judgement	32	\$13,276.54
No Action Taken	125	\$18,839.22
Over 65/Disabled	0	\$0.00
Suit 2	0	\$0.00
Suit 2	2	\$947.27
Suit 3	1	\$54.96
Uncollectable	0	\$0.00
Uncollectable	160	\$75,180.19
<b>Totals for Mobile Home Properties</b>	<b>326</b>	<b>\$112,157.61</b>

As of 09/30/2018

Properties	Tax Due
1	\$309.58
0	\$0.00
4	\$2,417.84
2	\$594.12
0	\$0.00
74	\$49,543.95
206	\$29,338.78
4	\$2,722.91
2	\$813.34
0	\$0.00
0	\$0.00
119	\$40,387.77
0	\$0.00
<b>412</b>	<b>\$126,128.29</b>

Net Change

Properties	Tax Due
1	\$309.58
-3	(\$2,806.12)
4	\$2,417.84
2	\$594.12
-3	(\$1,053.31)
42	\$36,267.41
81	\$10,499.56
4	\$2,722.91
2	\$813.34
-2	(\$947.27)
-1	(\$54.96)
119	\$40,387.77
-160	(\$75,180.19)
<b>86</b>	<b>\$13,970.68</b>

## Denton ISD Report for Years 2016 & Prior - Personal Properties

As of 10/01/2017

Account Status	Properties	Tax Due
Bankruptcy	20	\$99,150.33
Currently at Research	9	\$6,465.17
Different Delinquency Date	39	\$431,230.95
Exempt	8	\$464.84
Hold	4	\$7,453.07
Intervention	17	\$42,745.73
Judgement	110	\$356,694.34
No Action Taken	836	\$255,760.17
Suit 1	7	\$21,427.84
Suit 2	26	\$73,177.40
Suit 3	3	\$3,885.29
Trust Account	1	\$55.35
Uncollectable	404	\$257,645.92
<b>Totals for Personal Properties</b>	<b>1484</b>	<b>\$1,556,156.40</b>

As of 09/30/2018

Properties	Tax Due
15	\$88,913.56
0	\$0.00
32	\$410,440.11
3	\$448.50
4	\$6,145.99
9	\$34,523.53
103	\$328,009.30
691	\$180,761.63
12	\$30,927.48
18	\$23,157.95
5	\$4,660.01
1	\$55.35
326	\$239,487.77
<b>1219</b>	<b>\$1,347,531.18</b>

Net Change

Properties	Tax Due
-5	(\$10,236.77)
-9	(\$6,465.17)
-7	(\$20,790.84)
-5	(\$16.34)
0	(\$1,307.08)
-8	(\$8,222.20)
-7	(\$28,685.04)
-145	(\$74,998.54)
5	\$9,499.64
-8	(\$50,019.45)
2	\$774.72
0	\$0.00
-78	(\$18,158.15)
<b>-265</b>	<b>(\$208,625.22)</b>

# Denton ISD Report for Years 2016 & Prior - Real Estate Properties

As of 10/01/2017

As of 09/30/2018

Net Change

Account Status	Properties	Tax Due
Auction	2	\$4,247.23
Bankruptcy	5	\$9,379.05
Currently at Research	0	\$0.00
Different Delinquency Date	151	\$157,008.71
Exempt	47	\$9,877.43
Hold	3	\$7,560.19
Intervention	5	\$26,412.78
Judgement	36	\$193,169.98
No Action Taken	399	\$260,103.60
Over 65/Disabled	89	\$831,036.44
Partial Payment Agreement	37	\$72,934.63
Probate	1	\$3,747.99
Suit 1	10	\$41,784.65
Suit 2	18	\$74,901.72
Suit 3	4	\$6,826.53
Trust Account	7	\$7,821.40
Uncollectable	30	\$23,919.01
<b>Totals for Real Estate Properties</b>	<b>844</b>	<b>\$1,730,731.34</b>

Properties	Tax Due
4	\$13,160.68
4	\$8,042.97
1	\$584.69
47	\$123,367.70
46	\$9,517.45
2	\$2,845.18
1	\$565.46
30	\$116,911.95
111	\$17,729.21
82	\$727,181.31
16	\$37,100.34
2	\$18,602.76
3	\$1,342.16
12	\$21,883.54
0	\$0.00
7	\$7,819.53
27	\$19,468.87
<b>395</b>	<b>\$1,126,123.80</b>

Properties	Tax Due
2	\$8,913.45
-1	(\$1,336.08)
1	\$584.69
-104	(\$33,641.01)
-1	(\$359.98)
-1	(\$4,715.01)
-4	(\$25,847.32)
-6	(\$76,258.03)
-288	(\$242,374.39)
-7	(\$103,855.13)
-21	(\$35,834.29)
1	\$14,854.77
-7	(\$40,442.49)
-6	(\$53,018.18)
-4	(\$6,826.53)
0	(\$1.87)
-3	(\$4,450.14)
<b>-449</b>	<b>(\$604,607.54)</b>

**Totals for Denton ISD**      3351    \$3,522,795.60

2404    \$2,638,167.22

-947    (\$884,628.38)

## Denton County Tax Office

### YEAR-TO-DATE SUMMARY PART A

**55 - DENTON ISD**

Tax Year = 2017 AND Year End Date = 9/30/2018 AND Month Range from 10/1/2017 to 9/30/2018 and Tax Units = DENTON ISD

#### CURRENT YEAR INFORMATION

<b>Start Value</b>	<b>Start Exemption</b>	<b>Start Taxable</b>	<b>Rate</b>	<b>Calc Start Levy</b>	<b>Actual Start Levy</b>	<b>Start Frozen Loss</b>	<b>Start + Frozen</b>
19,482,388,255	3,400,519,914	16,081,868,341	1.540000	247,660,772.45	239,211,376.49		247,660,773.77
<b>Adjusted Value</b>	<b>Adjusted Exemption</b>	<b>Adj Taxable</b>	<b>Rate</b>	<b>Calc Adj Levy</b>	<b>Actual Current Levy</b>	<b>Adj Frozen Loss</b>	<b>Act Levy + Act Frozen</b>
20,147,149,656	3,620,626,615	16,526,523,041	1.540000	254,508,454.83	245,737,976.24	8,770,478.86	254,508,455.10
<b>StartValue</b>	<b>Net Value Adj</b>	<b>Start Value + net Value Adj</b>			<b>Actual Current Value</b>		
19,482,388,255	664,761,401	20,147,149,656			20,147,149,656		
<b>StartExemption</b>	<b>Net Exmp Adj</b>	<b>Start Exemp + Net Exmp Adj</b>			<b>Actual Current Exemption</b>		
3,400,519,914	220,106,701	3,620,626,615			3,620,626,615		

YEAR	START BALANCE	START REFUND DUE	NET START BALANCE	NET MTD ADJ	NET YTD ADJ	YTD PENALTY	YTD INTEREST	YTD COL PEN	OVERPMT REFUND
1986	7.41	0.00	7.41	0.00	0.00	0.00	0.00	0.00	0.00
1987	11.67	0.00	11.67	0.00	0.00	0.00	0.00	0.00	0.00
1988	12.57	0.00	12.57	0.00	0.00	0.00	0.00	0.00	0.00
1989	16.13	0.00	16.13	0.00	0.00	0.00	0.00	0.00	0.00
1990	18.60	0.00	18.60	0.00	0.00	0.00	0.00	0.00	0.00
1991	8.48	0.00	8.48	0.00	0.00	0.00	0.00	0.00	0.00
1992	19.81	0.00	19.81	0.00	0.00	1.24	30.84	8.49	0.00
1993	183.53	0.00	183.53	0.00	0.00	16.65	395.34	110.16	0.00
1994	288.27	0.00	288.27	(45.95)	(45.95)	18.62	416.50	118.06	0.00
1995	324.50	0.00	324.50	(234.32)	(234.32)	0.00	0.00	0.00	0.00
1996	1,848.22	0.00	1,848.22	(997.08)	(997.08)	22.75	460.37	123.22	0.00
1997	2,387.67	0.00	2,387.67	(317.34)	(317.34)	14.08	278.96	79.57	0.00
1998	744.63	0.00	744.63	(824.90)	(824.90)	27.32	520.19	155.06	0.00
1999	5,324.73	0.00	5,324.73	(1,053.40)	(1,053.40)	37.16	672.84	201.45	0.00
2000	5,656.72	0.00	5,656.72	(845.08)	(845.08)	0.00	0.00	0.00	0.00
2001	15,661.90	0.00	15,661.90	(7,413.95)	(7,413.95)	12.05	189.26	57.85	0.00
2002	29,582.50	0.00	29,582.50	(5,833.80)	(5,833.80)	12.05	177.21	55.44	0.00
2003	31,270.04	0.00	31,270.04	(7,876.25)	(7,876.25)	0.00	0.00	0.00	0.00
2004	45,743.13	0.00	45,743.13	(7,009.16)	(7,009.16)	64.28	626.04	161.18	0.00
2005	59,093.54	0.00	59,093.54	(13,438.26)	(13,438.26)	79.93	2,526.30	193.99	0.00
2006	136,360.34	0.00	136,360.34	(81,932.78)	(81,932.78)	15.99	1,947.47	-472.31	0.00
2007	126,758.94	0.00	126,758.94	(14,220.98)	(14,220.98)	144.14	2,578.67	-15.34	0.00
2008	196,502.36	0.00	196,502.36	0.00	0.00	100.94	2,028.54	-106.22	0.00
2009	178,200.67	0.00	178,200.67	0.00	0.00	139.01	2,169.84	39.16	0.00
2010	139,782.84	0.00	139,782.84	0.00	0.00	353.20	5,811.69	575.90	0.00
2011	205,197.80	0.00	205,197.80	46,604.16	46,604.16	487.37	5,619.96	544.99	0.00

**Denton County Tax Office**

**YEAR-TO-DATE SUMMARY PART A**

**55 - DENTON ISD**

Tax Year = 2017 AND Year End Date = 9/30/2018 AND Month Range from 10/1/2017 to 9/30/2018 and Tax Units = DENTON ISD

YEAR	START BALANCE	START REFUND DUE	NET START BALANCE	NET MTD ADJ	NET YTD ADJ	YTD PENALTY	YTD INTEREST	YTD COL PEN	OVERPMT REFUND
2012	285,135.63	0.00	285,135.63	224,394.00	224,394.00	4,274.68	9,624.52	2,237.02	0.00
2013	298,142.81	0.00	298,142.81	241,951.30	241,951.30	4,939.34	11,680.46	3,899.41	0.00
2014	427,107.76	0.00	427,107.76	277,255.77	277,255.77	7,350.97	17,776.20	9,710.27	0.00
2015	591,682.29	0.00	591,682.29	205,388.93	205,388.93	17,203.56	32,962.40	31,185.33	0.00
2016	1,007,387.83	0.00	1,007,387.83	(147,851.49)	(147,851.49)	57,821.60	60,092.46	109,612.46	0.00
2017	239,211,376.49	0.00	239,211,376.49	6,526,599.75	6,526,599.75	397,218.46	128,558.30	137,350.00	0.00
<b>TOTAL</b>	<b>243,001,839.81</b>	<b>0.00</b>	<b>243,001,839.81</b>	<b>7,232,299.17</b>	<b>7,232,299.17</b>	<b>490,355.39</b>	<b>287,144.36</b>	<b>295,825.14</b>	<b>0.00</b>

# Denton County Tax Office

**YEAR-TO-DATE SUMMARY PART B**

**55 - DENTON ISD**

Tax Year = 2017 AND Year End Date = 9/30/2018 AND Month Range from 10/1/2017 to 9/30/2018 and Tax Units = DENTON ISD

**CURRENT YEAR INFORMATION**

<b>Start Value</b>	<b>Start Exemption</b>	<b>Start Taxable</b>	<b>Rate</b>	<b>Calc Start Levy</b>	<b>Actual Start Levy</b>	<b>Start Frozen Loss</b>	<b>Start + Frozen</b>
19,482,388,255	3,400,519,914	16,081,868,341	1.540000	247,660,772.45	239,211,376.49		247,660,773.77
<b>Adjusted Value</b>	<b>Adjusted Exemption</b>	<b>Adj Taxable</b>	<b>Rate</b>	<b>Calc Adj Levy</b>	<b>Actual Current Levy</b>	<b>Adj Frozen Loss</b>	<b>Act Levy + Act Frozen</b>
20,147,149,656	3,620,626,615	16,526,523,041	1.540000	254,508,454.83	245,737,976.24	8,770,478.86	254,508,455.10
<b>StartValue</b>	<b>Net Value Adj</b>	<b>Start Value + net Value Adj</b>			<b>Actual Current Value</b>		
19,482,388,255	664,761,401	20,147,149,656			20,147,149,656		
<b>StartExemption</b>	<b>Net Exmp Adj</b>	<b>Start Exemp + Net Exmp Adj</b>			<b>Actual Current Exemption</b>		
3,400,519,914	220,106,701	3,620,626,615			3,620,626,615		

YEAR	YTD LEVY PAID	YTD REFUND PAID	YTD DISCOUNT	NET YTD LEVY PAID	CALC BALANCE	PAYMENTS PENDING	REFUNDS PENDING	ACTUAL BALANCE	DIFF
1986	0.00	0.00	0.00	0.00	7.41	0.00	0.00	7.41	0.00
1987	0.00	0.00	0.00	0.00	11.67	0.00	0.00	11.67	0.00
1988	0.00	0.00	0.00	0.00	12.57	0.00	0.00	12.57	0.00
1989	0.00	0.00	0.00	0.00	16.13	0.00	0.00	16.13	0.00
1990	0.00	0.00	0.00	0.00	18.60	0.00	0.00	18.60	0.00
1991	0.00	0.00	0.00	0.00	8.48	0.00	0.00	8.48	0.00
1992	10.34	0.00	0.00	10.34	9.47	0.00	0.00	9.47	0.00
1993	138.78	0.00	0.00	138.78	44.75	0.00	0.00	44.75	0.00
1994	155.20	0.00	0.00	155.20	87.12	0.00	0.00	87.12	0.00
1995	0.00	0.00	0.00	0.00	90.18	0.00	0.00	90.18	0.00
1996	189.54	0.00	0.00	189.54	661.60	0.00	0.00	661.60	0.00
1997	117.29	0.00	0.00	117.29	1,953.04	0.00	0.00	1,953.04	0.00
1998	227.75	0.00	0.00	227.75	-308.02	0.00	0.00	(308.02)	0.00
1999	309.72	0.00	0.00	309.72	3,961.61	0.00	0.00	3,961.61	0.00
2000	0.00	0.00	0.00	0.00	4,811.64	0.00	0.00	4,811.64	0.00
2001	100.43	0.00	0.00	100.43	8,147.52	0.00	0.00	8,147.52	0.00
2002	100.43	0.00	0.00	100.43	23,648.27	0.00	0.00	23,648.27	0.00
2003	0.00	0.00	0.00	0.00	23,393.79	0.00	0.00	23,393.79	0.00
2004	535.72	0.00	0.00	535.72	38,198.25	0.00	0.00	38,198.25	0.00
2005	2,477.91	0.00	0.00	2,477.91	43,177.37	0.00	0.00	43,177.37	0.00
2006	2,207.43	0.00	0.00	2,207.43	52,220.13	0.00	0.00	52,220.13	0.00
2007	2,814.26	0.00	0.00	2,814.26	109,723.70	0.00	0.00	109,723.70	0.00
2008	2,458.89	0.00	0.00	2,458.89	194,043.47	0.00	0.00	194,043.47	0.00
2009	2,796.39	0.00	0.00	2,796.39	175,404.28	0.00	0.00	175,404.28	0.00
2010	9,089.14	0.00	0.00	9,089.14	130,693.70	0.00	0.00	130,693.70	0.00
2011	87,543.16	(229.50)	0.00	87,313.66	164,488.30	0.00	0.00	164,488.30	0.00



## Denton County Tax Office

**YEAR-TO-DATE SUMMARY PART B**

**55 - DENTON ISD**

Tax Year = 2017 AND Year End Date = 9/30/2018 AND Month Range from  
10/1/2017 to 9/30/2018 and Tax Units = DENTON ISD

YEAR	YTD LEVY PAID	YTD REFUND PAID	YTD DISCOUNT	NET YTD LEVY PAID	CALC BALANCE	PAYMENTS PENDING	REFUNDS PENDING	ACTUAL BALANCE	DIFF
2012	294,676.26	(229.51)	0.00	294,446.75	215,082.88	0.00	0.00	215,082.88	0.00
2013	307,772.73	(1,921.69)	0.00	305,851.04	234,243.07	0.00	0.00	234,243.07	0.00
2014	365,475.83	(1,931.02)	0.00	363,544.81	340,818.72	0.00	0.00	340,818.72	0.00
2015	488,822.81	(86,698.23)	0.00	402,124.58	394,946.64	0.00	0.00	394,946.64	0.00
2016	841,258.71	(477,811.37)	0.00	363,447.34	496,089.00	0.00	0.00	496,089.00	0.00
2017	246,646,885.68	(1,868,291.68)	0.00	244,778,594.00	959,382.24	0.00	0.00	959,382.24	0.00
<b>TOTAL</b>	<b>249,056,164.40</b>	<b>(2,437,113.00)</b>	<b>0.00</b>	<b>246,619,051.40</b>	<b>3,615,087.58</b>	<b>0.00</b>	<b>0.00</b>	<b>3,615,087.58</b>	<b>0.00</b>

# Denton County Tax Office

## YEAR-TO-DATE SUMMARY PART C

Tax Year = 2017 AND Year End Date = 9/30/2018 AND Month Range from 10/1/2017 to 9/30/2018 and Tax Units = DENTON ISD

**55 - DENTON ISD**

### CURRENT YEAR INFORMATION

<b>Start Value</b>	<b>Start Exemption</b>	<b>Start Taxable</b>	<b>Rate</b>	<b>Calc Start Levy</b>	<b>Actual Start Levy</b>	<b>Start Frozen Loss</b>	<b>Start + Frozen</b>
19,482,388,255	3,400,519,914	16,081,868,341	1.540000	247,660,772.45	239,211,376.49		247,660,773.77
<b>Adjusted Value</b>	<b>Adjusted Exemption</b>	<b>Adj Taxable</b>	<b>Rate</b>	<b>Calc Adj Levy</b>	<b>Actual Current Levy</b>	<b>Adj Frozen Loss</b>	<b>Act Levy + Act Frozen</b>
20,147,149,656	3,620,626,615	16,526,523,041	1.540000	254,508,454.83	245,737,976.24	8,770,478.86	254,508,455.10
<b>StartValue</b>	<b>Net Value Adj</b>	<b>Start Value + net Value Adj</b>		<b>Actual Current Value</b>			
19,482,388,255	664,761,401	20,147,149,656		20,147,149,656			
<b>StartExemption</b>	<b>Net Exmp Adj</b>	<b>Start Exemp + Net Exmp Adj</b>		<b>Actual Current Exemption</b>			
3,400,519,914	220,106,701	3,620,626,615		3,620,626,615			

YEAR	NET START BALANCE	NET MTD ADJ	NET YTD ADJ	NET MTD PAID	NET YTD PAID	CALC BALANCE	REFUNDS DUE	COL %
1986	7.41	0.00	0.00	0.00	0.00	7.41	0.00	0.00
1987	11.67	0.00	0.00	0.00	0.00	11.67	0.00	0.00
1988	12.57	0.00	0.00	0.00	0.00	12.57	0.00	0.00
1989	16.13	0.00	0.00	0.00	0.00	16.13	0.00	0.00
1990	18.60	0.00	0.00	0.00	0.00	18.60	0.00	0.00
1991	8.48	0.00	0.00	0.00	0.00	8.48	0.00	0.00
1992	19.81	0.00	0.00	10.34	10.34	9.47	0.00	52.19
1993	183.53	0.00	0.00	138.78	138.78	44.75	0.00	75.61
1994	288.27	(45.95)	(45.95)	155.20	155.20	87.12	0.00	64.04
1995	324.50	(234.32)	(234.32)	0.00	0.00	90.18	0.00	0.00
1996	1,848.22	(997.08)	(997.08)	189.54	189.54	661.60	0.00	22.26
1997	2,387.67	(317.34)	(317.34)	117.29	117.29	1,953.04	0.00	5.66
1998	744.63	(824.90)	(824.90)	227.75	227.75	(308.02)	0.00	0.00
1999	5,324.73	(1,053.40)	(1,053.40)	309.72	309.72	3,961.61	0.00	7.25
2000	5,656.72	(845.08)	(845.08)	0.00	0.00	4,811.64	0.00	0.00
2001	15,661.90	(7,413.95)	(7,413.95)	100.43	100.43	8,147.52	0.00	1.21
2002	29,582.50	(5,833.80)	(5,833.80)	100.43	100.43	23,648.27	0.00	0.42
2003	31,270.04	(7,876.25)	(7,876.25)	0.00	0.00	23,393.79	0.00	0.00
2004	45,743.13	(7,009.16)	(7,009.16)	535.72	535.72	38,198.25	0.00	1.38
2005	59,093.54	(13,438.26)	(13,438.26)	2,477.91	2,477.91	43,177.37	0.00	5.42
2006	136,360.34	(81,932.78)	(81,932.78)	2,207.43	2,207.43	52,220.13	0.00	4.05
2007	126,758.94	(14,220.98)	(14,220.98)	2,814.26	2,814.26	109,723.70	0.00	2.50
2008	196,502.36	0.00	0.00	2,458.89	2,458.89	194,043.47	0.00	1.25
2009	178,200.67	0.00	0.00	2,796.39	2,796.39	175,404.28	0.00	1.56
2010	139,782.84	0.00	0.00	9,089.14	9,089.14	130,693.70	0.00	6.50
2011	205,197.80	46,604.16	46,604.16	87,313.66	87,313.66	164,488.30	0.00	34.67

## Denton County Tax Office

**YEAR-TO-DATE SUMMARY PART C**

**55 - DENTON ISD**

Tax Year = 2017 AND Year End Date = 9/30/2018 AND Month Range from  
10/1/2017 to 9/30/2018 and Tax Units = DENTON ISD

YEAR	NET START BALANCE	NET MTD ADJ	NET YTD ADJ	NET MTD PAID	NET YTD PAID	CALC BALANCE	REFUNDS DUE	COL %
2012	285,135.63	224,394.00	224,394.00	294,446.75	294,446.75	215,082.88	0.00	57.78
2013	298,142.81	241,951.30	241,951.30	305,851.04	305,851.04	234,243.07	0.00	56.62
2014	427,107.76	277,255.77	277,255.77	363,544.81	363,544.81	340,818.72	0.00	51.61
2015	591,682.29	205,388.93	205,388.93	402,124.58	402,124.58	394,946.64	0.00	50.45
2016	1,007,387.83	(147,851.49)	(147,851.49)	363,447.34	363,447.34	496,089.00	(0.02)	42.28
2017	239,211,376.49	6,526,599.75	6,526,599.75	244,778,594.00	244,778,594.00	959,382.24	(798.34)	99.60
<b>TOTAL</b>	<b>243,001,839.81</b>	<b>7,232,299.17</b>	<b>7,232,299.17</b>	<b>246,619,051.40</b>	<b>246,619,051.40</b>	<b>3,615,087.58</b>	<b>(798.36)</b>	

# Denton County Tax Office

## YEAR-TO-DATE SUMMARY PART A

**55 - DENTON ISD**

Tax Year = 2017 AND Year End Date = 2/28/2018 AND Month Range from 10/1/2017 to 2/28/2018 and Tax Units = DENTON ISD

### CURRENT YEAR INFORMATION

<b>Start Value</b>	<b>Start Exemption</b>	<b>Start Taxable</b>	<b>Rate</b>	<b>Calc Start Levy</b>	<b>Actual Start Levy</b>	<b>Start Frozen Loss</b>	<b>Start + Frozen</b>
19,482,388,255	3,400,519,914	16,081,868,341	1.540000	247,660,772.45	239,211,376.49		247,660,773.77
<b>Adjusted Value</b>	<b>Adjusted Exemption</b>	<b>Adj Taxable</b>	<b>Rate</b>	<b>Calc Adj Levy</b>	<b>Actual Current Levy</b>	<b>Adj Frozen Loss</b>	<b>Act Levy + Act Frozen</b>
20,232,189,339	3,611,609,196	16,620,580,143	1.540000	255,956,934.20	247,210,444.66	8,746,489.79	255,956,934.45
<b>StartValue</b>	<b>Net Value Adj</b>	<b>Start Value + net Value Adj</b>			<b>Actual Current Value</b>		
19,482,388,255	749,801,084	20,232,189,339			20,232,189,339		
<b>StartExemption</b>	<b>Net Exmp Adj</b>	<b>Start Exemp + Net Exmp Adj</b>			<b>Actual Current Exemption</b>		
3,400,519,914	211,089,282	3,611,609,196			3,611,609,196		

YEAR	START BALANCE	START REFUND DUE	NET START BALANCE	NET MTD ADJ	NET YTD ADJ	YTD PENALTY	YTD INTEREST	YTD COL PEN	OVERPMT REFUND
1986	7.41	0.00	7.41	0.00	0.00	0.00	0.00	0.00	0.00
1987	11.67	0.00	11.67	0.00	0.00	0.00	0.00	0.00	0.00
1988	12.57	0.00	12.57	0.00	0.00	0.00	0.00	0.00	0.00
1989	16.13	0.00	16.13	0.00	0.00	0.00	0.00	0.00	0.00
1990	18.60	0.00	18.60	0.00	0.00	0.00	0.00	0.00	0.00
1991	8.48	0.00	8.48	0.00	0.00	0.00	0.00	0.00	0.00
1992	19.81	0.00	19.81	0.00	0.00	1.24	30.84	8.49	0.00
1993	183.53	0.00	183.53	0.00	0.00	2.15	51.35	14.28	0.00
1994	288.27	0.00	288.27	(45.95)	(45.95)	0.00	0.00	0.00	0.00
1995	324.50	0.00	324.50	(234.32)	(234.32)	0.00	0.00	0.00	0.00
1996	1,848.22	0.00	1,848.22	(997.08)	(997.08)	-4.66	-107.15	-35.77	0.00
1997	2,387.67	0.00	2,387.67	(317.34)	(317.34)	0.23	4.49	1.32	0.00
1998	744.63	0.00	744.63	(824.90)	(824.90)	22.05	419.13	125.01	0.00
1999	5,324.73	0.00	5,324.73	(1,053.40)	(1,053.40)	0.00	0.00	0.00	0.00
2000	5,656.72	0.00	5,656.72	(845.08)	(845.08)	0.00	0.00	0.00	0.00
2001	15,661.90	0.00	15,661.90	(7,314.87)	(7,314.87)	0.00	0.00	0.00	0.00
2002	29,582.50	0.00	29,582.50	(5,734.19)	(5,734.19)	0.00	0.00	0.00	0.00
2003	31,270.04	0.00	31,270.04	(7,776.64)	(7,776.64)	0.00	0.00	0.00	0.00
2004	45,743.13	0.00	45,743.13	(6,909.55)	(6,909.55)	52.23	472.94	110.56	0.00
2005	59,093.54	0.00	59,093.54	(13,162.76)	(13,162.76)	51.05	2,167.58	68.33	0.00
2006	136,360.34	0.00	136,360.34	(81,687.18)	(81,687.18)	0.63	1,784.75	2.55	0.00
2007	126,758.94	0.00	126,758.94	(14,220.98)	(14,220.98)	55.36	1,799.40	212.45	0.00
2008	196,502.36	0.00	196,502.36	0.00	0.00	33.32	1,399.03	116.46	0.00
2009	178,200.67	0.00	178,200.67	0.00	0.00	37.34	1,307.52	128.97	0.00
2010	139,782.84	0.00	139,782.84	0.00	0.00	44.18	989.49	143.41	0.00
2011	205,197.80	0.00	205,197.80	4,540.08	4,540.08	157.62	1,437.64	460.52	0.00

## Denton County Tax Office

**YEAR-TO-DATE SUMMARY PART C**

**55 - DENTON ISD**

Tax Year = 2017 AND Year End Date = 9/30/2018 AND Month Range from  
10/1/2017 to 9/30/2018 and Tax Units = DENTON ISD

YEAR	NET START BALANCE	NET MTD ADJ	NET YTD ADJ	NET MTD PAID	NET YTD PAID	CALC BALANCE	REFUNDS DUE	COL %
2012	285,135.63	224,394.00	224,394.00	294,446.75	294,446.75	215,082.88	0.00	57.78
2013	298,142.81	241,951.30	241,951.30	305,851.04	305,851.04	234,243.07	0.00	56.62
2014	427,107.76	277,255.77	277,255.77	363,544.81	363,544.81	340,818.72	0.00	51.61
2015	591,682.29	205,388.93	205,388.93	402,124.58	402,124.58	394,946.64	0.00	50.45
2016	1,007,387.83	(147,851.49)	(147,851.49)	363,447.34	363,447.34	496,089.00	(0.02)	42.28
2017	239,211,376.49	6,526,599.75	6,526,599.75	244,778,594.00	244,778,594.00	959,382.24	(798.34)	99.60
<b>TOTAL</b>	<b>243,001,839.81</b>	<b>7,232,299.17</b>	<b>7,232,299.17</b>	<b>246,619,051.40</b>	<b>246,619,051.40</b>	<b>3,615,087.58</b>	<b>(798.36)</b>	

# Denton County Tax Office

## YEAR-TO-DATE SUMMARY PART A

Tax Year = 2017 AND Year End Date = 2/28/2018 AND Month Range from 10/1/2017 to 2/28/2018 and Tax Units = DENTON ISD

**55 - DENTON ISD**

### CURRENT YEAR INFORMATION

<b>Start Value</b>	<b>Start Exemption</b>	<b>Start Taxable</b>	<b>Rate</b>	<b>Calc Start Levy</b>	<b>Actual Start Levy</b>	<b>Start Frozen Loss</b>	<b>Start + Frozen</b>
19,482,388,255	3,400,519,914	16,081,868,341	1.540000	247,660,772.45	239,211,376.49		247,660,773.77
<b>Adjusted Value</b>	<b>Adjusted Exemption</b>	<b>Adj Taxable</b>	<b>Rate</b>	<b>Calc Adj Levy</b>	<b>Actual Current Levy</b>	<b>Adj Frozen Loss</b>	<b>Act Levy + Act Frozen</b>
20,232,189,339	3,611,609,196	16,620,580,143	1.540000	255,956,934.20	247,210,444.66	8,746,489.79	255,956,934.45
<b>StartValue</b>	<b>Net Value Adj</b>	<b>Start Value + net Value Adj</b>			<b>Actual Current Value</b>		
19,482,388,255	749,801,084	20,232,189,339			20,232,189,339		
<b>StartExemption</b>	<b>Net Exmp Adj</b>	<b>Start Exemp + Net Exmp Adj</b>			<b>Actual Current Exemption</b>		
3,400,519,914	211,089,282	3,611,609,196			3,611,609,196		

YEAR	START BALANCE	START REFUND DUE	NET START BALANCE	NET MTD ADJ	NET YTD ADJ	YTD PENALTY	YTD INTEREST	YTD COL PEN	OVERPMT REFUND
1986	7.41	0.00	7.41	0.00	0.00	0.00	0.00	0.00	0.00
1987	11.67	0.00	11.67	0.00	0.00	0.00	0.00	0.00	0.00
1988	12.57	0.00	12.57	0.00	0.00	0.00	0.00	0.00	0.00
1989	16.13	0.00	16.13	0.00	0.00	0.00	0.00	0.00	0.00
1990	18.60	0.00	18.60	0.00	0.00	0.00	0.00	0.00	0.00
1991	8.48	0.00	8.48	0.00	0.00	0.00	0.00	0.00	0.00
1992	19.81	0.00	19.81	0.00	0.00	0.00	0.00	0.00	0.00
1993	183.53	0.00	183.53	0.00	0.00	0.00	0.00	0.00	0.00
1994	288.27	0.00	288.27	(45.95)	(45.95)	0.00	0.00	0.00	0.00
1995	324.50	0.00	324.50	(234.32)	(234.32)	0.00	0.00	0.00	0.00
1996	1,848.22	0.00	1,848.22	(997.08)	(997.08)	-4.66	-107.15	-35.77	0.00
1997	2,387.67	0.00	2,387.67	(317.34)	(317.34)	0.23	4.49	1.32	0.00
1998	744.63	0.00	744.63	(824.90)	(824.90)	22.05	419.13	125.01	0.00
1999	5,324.73	0.00	5,324.73	(1,053.40)	(1,053.40)	0.00	0.00	0.00	0.00
2000	5,656.72	0.00	5,656.72	(845.08)	(845.08)	0.00	0.00	0.00	0.00
2001	15,661.90	0.00	15,661.90	(7,314.87)	(7,314.87)	0.00	0.00	0.00	0.00
2002	29,582.50	0.00	29,582.50	(5,734.19)	(5,734.19)	0.00	0.00	0.00	0.00
2003	31,270.04	0.00	31,270.04	(7,776.64)	(7,776.64)	0.00	0.00	0.00	0.00
2004	45,743.13	0.00	45,743.13	(6,909.55)	(6,909.55)	52.23	472.94	110.56	0.00
2005	59,093.54	0.00	59,093.54	(13,162.76)	(13,162.76)	51.05	2,167.58	68.33	0.00
2006	136,360.34	0.00	136,360.34	(81,687.18)	(81,687.18)	0.63	1,784.75	2.55	0.00
2007	126,758.94	0.00	126,758.94	(14,220.98)	(14,220.98)	55.36	1,799.40	212.45	0.00
2008	196,502.36	0.00	196,502.36	0.00	0.00	33.32	1,399.03	116.46	0.00
2009	178,200.67	0.00	178,200.67	0.00	0.00	37.34	1,307.52	128.97	0.00
2010	139,782.84	0.00	139,782.84	0.00	0.00	44.18	989.49	143.41	0.00
2011	205,197.80	0.00	205,197.80	4,540.08	4,540.08	157.62	1,437.64	460.52	0.00

## Denton County Tax Office

**YEAR-TO-DATE SUMMARY PART A**

**55 - DENTON ISD**

Tax Year = 2017 AND Year End Date = 2/28/2018 AND Month Range from  
10/1/2017 to 2/28/2018 and Tax Units = DENTON ISD

YEAR	START BALANCE	START REFUND DUE	NET START BALANCE	NET MTD ADJ	NET YTD ADJ	YTD PENALTY	YTD INTEREST	YTD COL PEN	OVERPMT REFUND
2012	285,135.63	0.00	285,135.63	113,620.89	113,620.89	264.69	2,032.29	659.65	0.00
2013	298,142.81	0.00	298,142.81	111,440.07	111,440.07	652.57	3,279.22	1,660.30	0.00
2014	427,107.76	0.00	427,107.76	113,747.40	113,747.40	1,933.03	6,398.39	4,338.20	0.00
2015	591,682.29	0.00	591,682.29	45,748.80	45,748.80	6,246.37	11,915.91	13,419.41	0.00
2016	1,007,387.83	0.00	1,007,387.83	38,303.42	38,303.42	34,786.41	31,299.65	66,970.08	0.00
2017	239,211,376.49	0.00	239,211,376.49	7,999,068.17	7,999,068.17	117,948.89	19,659.05	1,905.49	0.00
<b>TOTAL</b>	<b>243,001,839.81</b>	<b>0.00</b>	<b>243,001,839.81</b>	<b>8,285,344.59</b>	<b>8,285,344.59</b>	<b>162,284.70</b>	<b>86,341.52</b>	<b>90,309.71</b>	<b>0.00</b>

## Denton County Tax Office

### YEAR-TO-DATE SUMMARY PART A

**55 - DENTON ISD**

Tax Year = 2017 AND Year End Date = 2/28/2018 AND Month Range from  
10/1/2017 to 2/28/2018 and Tax Units = DENTON ISD

YEAR	START BALANCE	START REFUND DUE	NET START BALANCE	NET MTD ADJ	NET YTD ADJ	YTD PENALTY	YTD INTEREST	YTD COL PEN	OVERPMT REFUND
2012	285,135.63	0.00	285,135.63	113,620.89	113,620.89	264.69	2,032.29	659.65	0.00
2013	298,142.81	0.00	298,142.81	111,440.07	111,440.07	652.57	3,279.22	1,660.30	0.00
2014	427,107.76	0.00	427,107.76	113,747.40	113,747.40	1,933.03	6,398.39	4,338.20	0.00
2015	591,682.29	0.00	591,682.29	45,748.80	45,748.80	6,246.37	11,915.91	13,419.41	0.00
2016	1,007,387.83	0.00	1,007,387.83	38,303.42	38,303.42	34,786.41	31,299.65	66,970.08	0.00
2017	239,211,376.49	0.00	239,211,376.49	7,999,068.17	7,999,068.17	117,948.89	19,659.05	1,905.49	0.00
<b>TOTAL</b>	<b>243,001,839.81</b>	<b>0.00</b>	<b>243,001,839.81</b>	<b>8,285,344.59</b>	<b>8,285,344.59</b>	<b>162,284.70</b>	<b>86,341.52</b>	<b>90,309.71</b>	<b>0.00</b>



# Denton County Tax Office

## YEAR-TO-DATE SUMMARY PART B

**55 - DENTON ISD**

Tax Year = 2017 AND Year End Date = 2/28/2018 AND Month Range from 10/1/2017 to 2/28/2018 and Tax Units = DENTON ISD

### CURRENT YEAR INFORMATION

<b>Start Value</b>	<b>Start Exemption</b>	<b>Start Taxable</b>	<b>Rate</b>	<b>Calc Start Levy</b>	<b>Actual Start Levy</b>	<b>Start Frozen Loss</b>	<b>Start + Frozen</b>
19,482,388,255	3,400,519,914	16,081,868,341	1.540000	247,660,772.45	239,211,376.49		247,660,773.77
<b>Adjusted Value</b>	<b>Adjusted Exemption</b>	<b>Adj Taxable</b>	<b>Rate</b>	<b>Calc Adj Levy</b>	<b>Actual Current Levy</b>	<b>Adj Frozen Loss</b>	<b>Act Levy + Act Frozen</b>
20,232,189,339	3,611,609,196	16,620,580,143	1.540000	255,956,934.20	247,210,444.66	8,746,489.79	255,956,934.45
<b>StartValue</b>	<b>Net Value Adj</b>	<b>Start Value + net Value Adj</b>			<b>Actual Current Value</b>		
19,482,388,255	749,801,084	20,232,189,339			20,232,189,339		
<b>StartExemption</b>	<b>Net Exmp Adj</b>	<b>Start Exemp + Net Exmp Adj</b>			<b>Actual Current Exemption</b>		
3,400,519,914	211,089,282	3,611,609,196			3,611,609,196		

YEAR	YTD LEVY PAID	YTD REFUND PAID	YTD DISCOUNT	NET YTD LEVY PAID	CALC BALANCE	PAYMENTS PENDING	REFUNDS PENDING	ACTUAL BALANCE	DIFF
1986	0.00	0.00	0.00	0.00	7.41	0.00	0.00	7.41	0.00
1987	0.00	0.00	0.00	0.00	11.67	0.00	0.00	11.67	0.00
1988	0.00	0.00	0.00	0.00	12.57	0.00	0.00	12.57	0.00
1989	0.00	0.00	0.00	0.00	16.13	0.00	0.00	16.13	0.00
1990	0.00	0.00	0.00	0.00	18.60	0.00	0.00	18.60	0.00
1991	0.00	0.00	0.00	0.00	8.48	0.00	0.00	8.48	0.00
1992	10.34	0.00	0.00	10.34	9.47	0.00	0.00	9.47	0.00
1993	17.89	0.00	0.00	17.89	165.64	0.00	0.00	165.64	0.00
1994	0.00	0.00	0.00	0.00	242.32	0.00	0.00	242.32	0.00
1995	0.00	0.00	0.00	0.00	90.18	0.00	0.00	90.18	0.00
1996	-38.89	0.00	0.00	-38.89	890.03	0.00	0.00	890.03	0.00
1997	1.87	0.00	0.00	1.87	2,068.46	0.00	0.00	2,068.46	0.00
1998	183.81	0.00	0.00	183.81	-264.08	0.00	0.00	(264.08)	0.00
1999	0.00	0.00	0.00	0.00	4,271.33	0.00	0.00	4,271.33	0.00
2000	0.00	0.00	0.00	0.00	4,811.64	0.00	0.00	4,811.64	0.00
2001	0.00	0.00	0.00	0.00	8,347.03	0.00	0.00	8,347.03	0.00
2002	0.00	0.00	0.00	0.00	23,848.31	0.00	0.00	23,848.31	0.00
2003	0.00	0.00	0.00	0.00	23,493.40	0.00	0.00	23,493.40	0.00
2004	435.29	0.00	0.00	435.29	38,398.29	0.00	0.00	38,398.29	0.00
2005	2,237.17	0.00	0.00	2,237.17	43,693.61	0.00	0.00	43,693.61	0.00
2006	2,079.45	0.00	0.00	2,079.45	52,593.71	0.00	0.00	52,593.71	0.00
2007	2,074.51	0.00	0.00	2,074.51	110,463.45	0.00	0.00	110,463.45	0.00
2008	1,895.31	0.00	0.00	1,895.31	194,607.05	0.00	0.00	194,607.05	0.00
2009	1,949.17	0.00	0.00	1,949.17	176,251.50	0.00	0.00	176,251.50	0.00
2010	1,651.94	0.00	0.00	1,651.94	138,130.90	0.00	0.00	138,130.90	0.00
2011	38,569.82	0.00	0.00	38,569.82	171,168.06	0.00	0.00	171,168.06	0.00

# Denton County Tax Office

## YEAR-TO-DATE SUMMARY PART C

Tax Year = 2017 AND Year End Date = 9/30/2018 AND Month Range from 10/1/2017 to 9/30/2018 and Tax Units = DENTON ISD

**55 - DENTON ISD**

### CURRENT YEAR INFORMATION

<b>Start Value</b>	<b>Start Exemption</b>	<b>Start Taxable</b>	<b>Rate</b>	<b>Calc Start Levy</b>	<b>Actual Start Levy</b>	<b>Start Frozen Loss</b>	<b>Start + Frozen</b>
19,482,388,255	3,400,519,914	16,081,868,341	1.540000	247,660,772.45	239,211,376.49		247,660,773.77
<b>Adjusted Value</b>	<b>Adjusted Exemption</b>	<b>Adj Taxable</b>	<b>Rate</b>	<b>Calc Adj Levy</b>	<b>Actual Current Levy</b>	<b>Adj Frozen Loss</b>	<b>Act Levy + Act Frozen</b>
20,147,149,656	3,620,626,615	16,526,523,041	1.540000	254,508,454.83	245,737,976.24	8,770,478.86	254,508,455.10
<b>StartValue</b>	<b>Net Value Adj</b>	<b>Start Value + net Value Adj</b>		<b>Actual Current Value</b>			
19,482,388,255	664,761,401	20,147,149,656		20,147,149,656			
<b>StartExemption</b>	<b>Net Exmp Adj</b>	<b>Start Exemp + Net Exmp Adj</b>		<b>Actual Current Exemption</b>			
3,400,519,914	220,106,701	3,620,626,615		3,620,626,615			

YEAR	NET START BALANCE	NET MTD ADJ	NET YTD ADJ	NET MTD PAID	NET YTD PAID	CALC BALANCE	REFUNDS DUE	COL %
1986	7.41	0.00	0.00	0.00	0.00	7.41	0.00	0.00
1987	11.67	0.00	0.00	0.00	0.00	11.67	0.00	0.00
1988	12.57	0.00	0.00	0.00	0.00	12.57	0.00	0.00
1989	16.13	0.00	0.00	0.00	0.00	16.13	0.00	0.00
1990	18.60	0.00	0.00	0.00	0.00	18.60	0.00	0.00
1991	8.48	0.00	0.00	0.00	0.00	8.48	0.00	0.00
1992	19.81	0.00	0.00	10.34	10.34	9.47	0.00	52.19
1993	183.53	0.00	0.00	138.78	138.78	44.75	0.00	75.61
1994	288.27	(45.95)	(45.95)	155.20	155.20	87.12	0.00	64.04
1995	324.50	(234.32)	(234.32)	0.00	0.00	90.18	0.00	0.00
1996	1,848.22	(997.08)	(997.08)	189.54	189.54	661.60	0.00	22.26
1997	2,387.67	(317.34)	(317.34)	117.29	117.29	1,953.04	0.00	5.66
1998	744.63	(824.90)	(824.90)	227.75	227.75	(308.02)	0.00	0.00
1999	5,324.73	(1,053.40)	(1,053.40)	309.72	309.72	3,961.61	0.00	7.25
2000	5,656.72	(845.08)	(845.08)	0.00	0.00	4,811.64	0.00	0.00
2001	15,661.90	(7,413.95)	(7,413.95)	100.43	100.43	8,147.52	0.00	1.21
2002	29,582.50	(5,833.80)	(5,833.80)	100.43	100.43	23,648.27	0.00	0.42
2003	31,270.04	(7,876.25)	(7,876.25)	0.00	0.00	23,393.79	0.00	0.00
2004	45,743.13	(7,009.16)	(7,009.16)	535.72	535.72	38,198.25	0.00	1.38
2005	59,093.54	(13,438.26)	(13,438.26)	2,477.91	2,477.91	43,177.37	0.00	5.42
2006	136,360.34	(81,932.78)	(81,932.78)	2,207.43	2,207.43	52,220.13	0.00	4.05
2007	126,758.94	(14,220.98)	(14,220.98)	2,814.26	2,814.26	109,723.70	0.00	2.50
2008	196,502.36	0.00	0.00	2,458.89	2,458.89	194,043.47	0.00	1.25
2009	178,200.67	0.00	0.00	2,796.39	2,796.39	175,404.28	0.00	1.56
2010	139,782.84	0.00	0.00	9,089.14	9,089.14	130,693.70	0.00	6.50
2011	205,197.80	46,604.16	46,604.16	87,313.66	87,313.66	164,488.30	0.00	34.67

# Denton County Tax Office

## 55 - DENTON ISD

### YEAR-TO-DATE SUMMARY PART B

Tax Year = 2017 AND Year End Date = 2/28/2018 AND Month Range from  
10/1/2017 to 2/28/2018 and Tax Units = DENTON ISD

YEAR	YTD LEVY PAID	YTD REFUND PAID	YTD DISCOUNT	NET YTD LEVY PAID	CALC BALANCE	PAYMENTS PENDING	REFUNDS PENDING	ACTUAL BALANCE	DIFF
2012	91,901.47	(0.01)	0.00	91,901.46	306,855.06	0.00	0.00	306,831.39	23.67
2013	95,242.95	(482.15)	0.00	94,760.80	314,822.08	0.00	0.00	314,822.08	0.00
2014	103,552.87	(356.53)	0.00	103,196.34	437,658.82	4,216.84	0.00	433,441.98	0.00
2015	176,809.09	(77,279.42)	0.00	99,529.67	537,901.42	4,529.31	0.00	533,372.11	0.00
2016	414,867.05	(133,429.80)	0.00	281,437.25	764,254.00	6,463.92	0.00	756,978.95	811.13
2017	241,542,236.09	(391,295.76)	0.00	241,150,940.33	6,059,504.33	371,652.23	0.00	5,626,953.91	60,898.19
<b>TOTAL</b>	<b>242,475,677.20</b>	<b>(602,843.67)</b>	<b>0.00</b>	<b>241,872,833.53</b>	<b>9,414,350.87</b>	<b>386,862.30</b>	<b>0.00</b>	<b>8,965,755.58</b>	<b>61,732.99</b>

# Denton County Tax Office

## YEAR-TO-DATE SUMMARY PART C

Tax Year = 2017 AND Year End Date = 2/28/2018 AND Month Range from 10/1/2017 to 2/28/2018 and Tax Units = DENTON ISD

**55 - DENTON ISD**

### CURRENT YEAR INFORMATION

<b>Start Value</b>	<b>Start Exemption</b>	<b>Start Taxable</b>	<b>Rate</b>	<b>Calc Start Levy</b>	<b>Actual Start Levy</b>	<b>Start Frozen Loss</b>	<b>Start + Frozen</b>
19,482,388,255	3,400,519,914	16,081,868,341	1.540000	247,660,772.45	239,211,376.49		247,660,773.77
<b>Adjusted Value</b>	<b>Adjusted Exemption</b>	<b>Adj Taxable</b>	<b>Rate</b>	<b>Calc Adj Levy</b>	<b>Actual Current Levy</b>	<b>Adj Frozen Loss</b>	<b>Act Levy + Act Frozen</b>
20,232,189,339	3,611,609,196	16,620,580,143	1.540000	255,956,934.20	247,210,444.66	8,746,489.79	255,956,934.45
<b>Start Value</b>	<b>Net Value Adj</b>	<b>Start Value + net Value Adj</b>		<b>Actual Current Value</b>			
19,482,388,255	749,801,084	20,232,189,339		20,232,189,339			
<b>Start Exemption</b>	<b>Net Exmp Adj</b>	<b>Start Exemp + Net Exmp Adj</b>		<b>Actual Current Exemption</b>			
3,400,519,914	211,089,282	3,611,609,196		3,611,609,196			

YEAR	NET START BALANCE	NET MTD ADJ	NET YTD ADJ	NET MTD PAID	NET YTD PAID	CALC BALANCE	REFUNDS DUE	COL %
1986	7.41	0.00	0.00	0.00	0.00	7.41	0.00	0.00
1987	11.67	0.00	0.00	0.00	0.00	11.67	0.00	0.00
1988	12.57	0.00	0.00	0.00	0.00	12.57	0.00	0.00
1989	16.13	0.00	0.00	0.00	0.00	16.13	0.00	0.00
1990	18.60	0.00	0.00	0.00	0.00	18.60	0.00	0.00
1991	8.48	0.00	0.00	0.00	0.00	8.48	0.00	0.00
1992	19.81	0.00	0.00	10.34	10.34	9.47	0.00	52.19
1993	183.53	0.00	0.00	17.89	17.89	165.64	0.00	9.74
1994	288.27	(45.95)	(45.95)	0.00	0.00	242.32	0.00	0.00
1995	324.50	(234.32)	(234.32)	0.00	0.00	90.18	0.00	0.00
1996	1,848.22	(997.08)	(997.08)	(38.89)	(38.89)	890.03	0.00	0.00
1997	2,387.67	(317.34)	(317.34)	1.87	1.87	2,068.46	0.00	0.09
1998	744.63	(824.90)	(824.90)	183.81	183.81	(264.08)	0.00	0.00
1999	5,324.73	(1,053.40)	(1,053.40)	0.00	0.00	4,271.33	0.00	0.00
2000	5,656.72	(845.08)	(845.08)	0.00	0.00	4,811.64	0.00	0.00
2001	15,661.90	(7,314.87)	(7,314.87)	0.00	0.00	8,347.03	0.00	0.00
2002	29,582.50	(5,734.19)	(5,734.19)	0.00	0.00	23,848.31	0.00	0.00
2003	31,270.04	(7,776.64)	(7,776.64)	0.00	0.00	23,493.40	0.00	0.00
2004	45,743.13	(6,909.55)	(6,909.55)	435.29	435.29	38,398.29	0.00	1.12
2005	59,093.54	(13,162.76)	(13,162.76)	2,237.17	2,237.17	43,693.61	0.00	4.87
2006	136,360.34	(81,687.18)	(81,687.18)	2,079.45	2,079.45	52,593.71	0.00	3.80
2007	126,758.94	(14,220.98)	(14,220.98)	2,074.51	2,074.51	110,463.45	0.00	1.84
2008	196,502.36	0.00	0.00	1,895.31	1,895.31	194,607.05	0.00	0.96
2009	178,200.67	0.00	0.00	1,949.17	1,949.17	176,251.50	0.00	1.09
2010	139,782.84	0.00	0.00	1,651.94	1,651.94	138,130.90	0.00	1.18
2011	205,197.80	4,540.08	4,540.08	38,569.82	38,569.82	171,168.06	0.00	18.38

# Denton County Tax Office

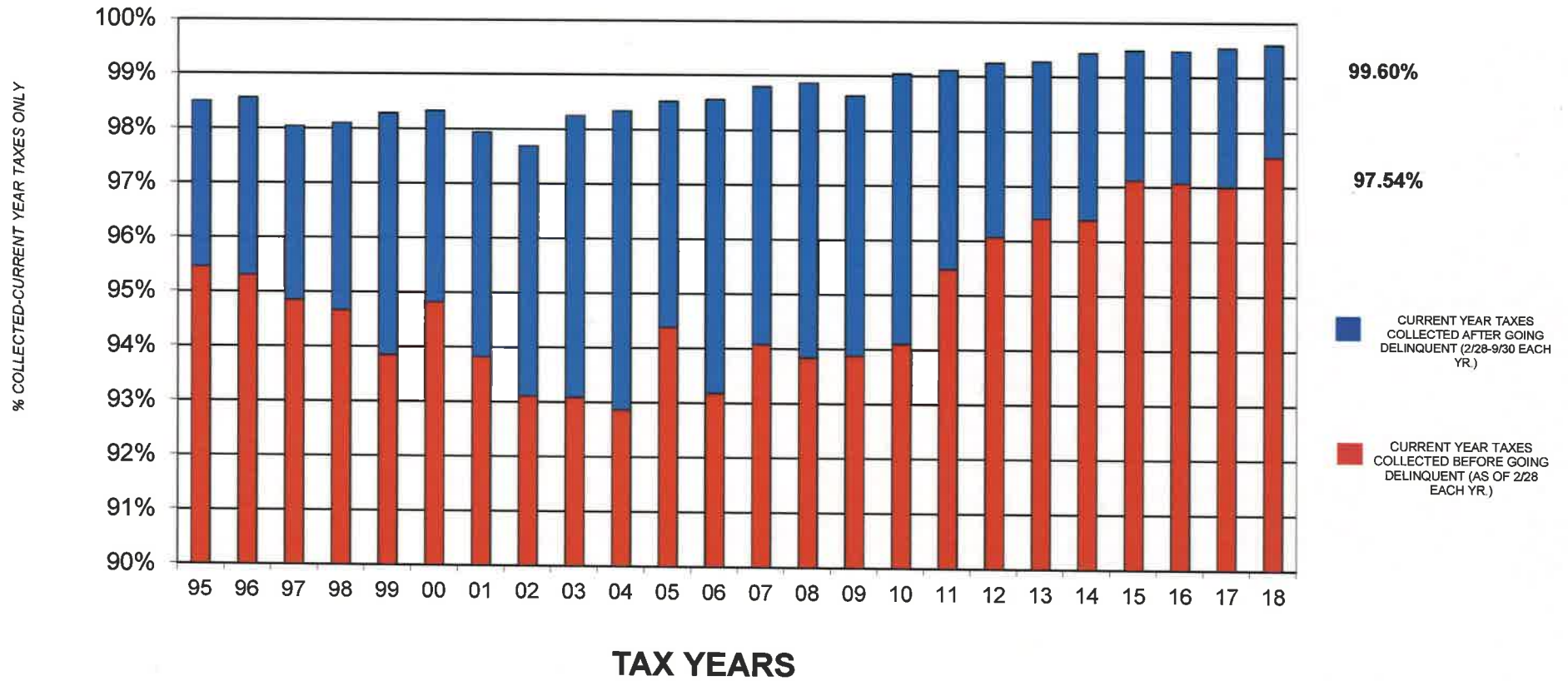
## 55 - DENTON ISD

### YEAR-TO-DATE SUMMARY PART C

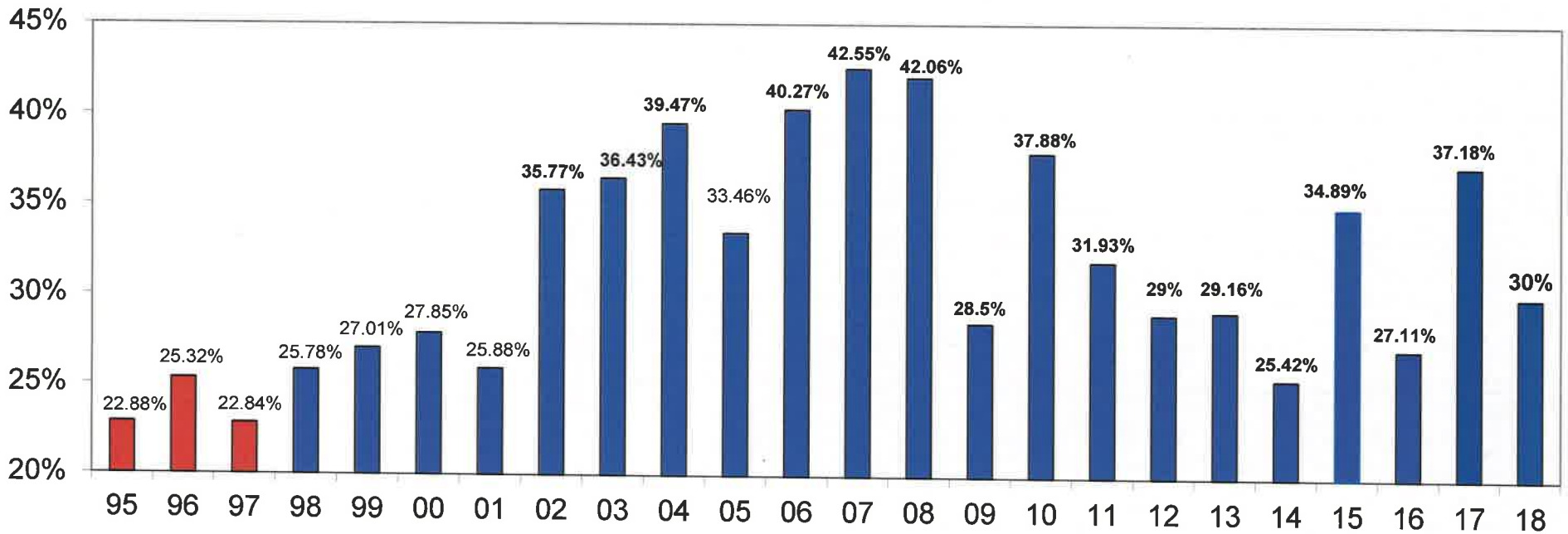
Tax Year = 2017 AND Year End Date = 2/28/2018 AND Month Range from 10/1/2017 to 2/28/2018 and Tax Units = DENTON ISD

YEAR	NET START BALANCE	NET MTD ADJ	NET YTD ADJ	NET MTD PAID	NET YTD PAID	CALC BALANCE	REFUNDS DUE	COL %
2012	285,135.63	113,620.89	113,620.89	91,901.46	91,901.46	306,855.06	0.00	23.04
2013	298,142.81	111,440.07	111,440.07	94,760.80	94,760.80	314,822.08	(0.01)	23.13
2014	427,107.76	113,747.40	113,747.40	103,196.34	103,196.34	437,658.82	0.00	19.08
2015	591,682.29	45,748.80	45,748.80	99,529.67	99,529.67	537,901.42	0.00	15.61
2016	1,007,387.83	38,303.42	38,303.42	281,437.25	281,437.25	764,254.00	(0.02)	26.91
2017	239,211,376.49	7,999,068.17	7,999,068.17	241,150,940.33	241,150,940.33	6,059,504.33	0.00	97.54
<b>TOTAL</b>	<b>243,001,839.81</b>	<b>8,285,344.59</b>	<b>8,285,344.59</b>	<b>241,872,833.53</b>	<b>241,872,833.53</b>	<b>9,414,350.87</b>	<b>(0.03)</b>	

## % COLLECTED-CURRENT TAX YEAR ONLY

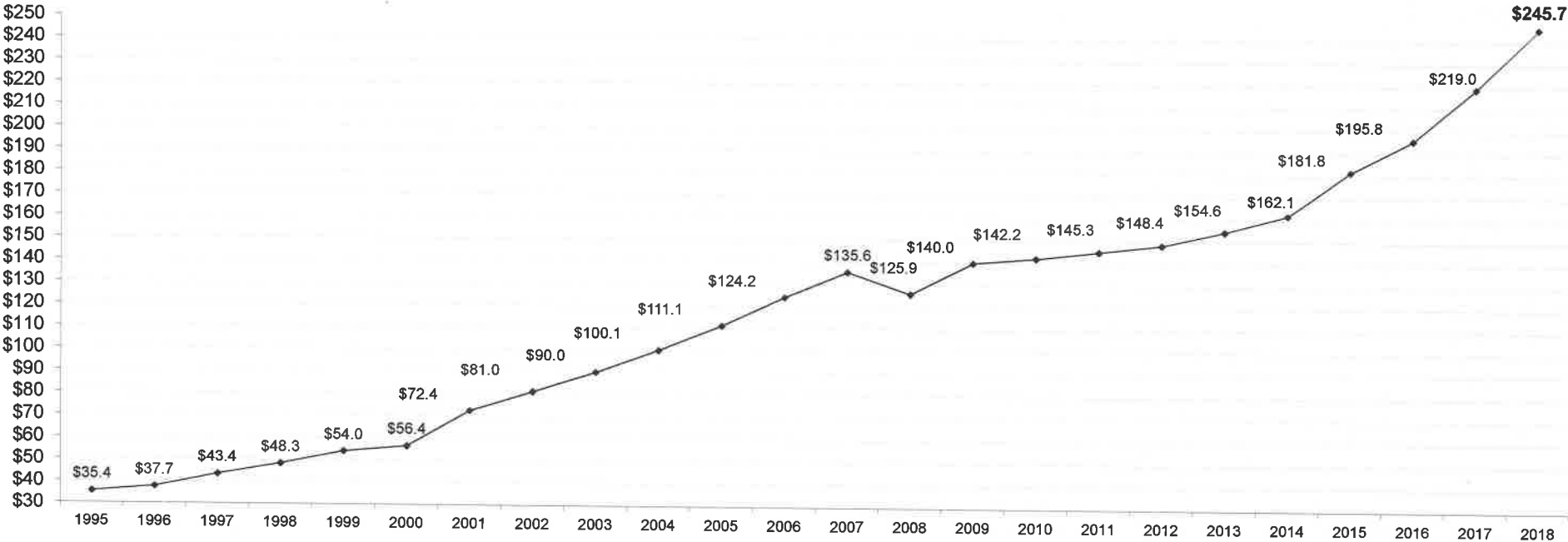


DISD PRIOR YEAR DELINQUENT TAX COLLECTIONS HISTORY  
(all years except current year taxes)



Red= TAX YEARS BEFORE SAWKO & BURROUGHS, P.C.  
BLUE= TAX YEARS UNDER CONTRACT WITH SAWKO & BURROUGHS, P.C.

### DISD TAX LEVY (Adjusted) in millions (\$)



**Note:** During this rise from \$35 million to \$245 million in tax levied, the total year end delinquency rate actually shrank from 5.9% of levy in 1995 to .40% of 1% (as a percentage of levy) in 2018.



**DISD TWENTY-FOUR YEAR COLLECTIONS HISTORY 1995-2018\***

**I. TOTAL COLLECTIONS** as a percentage of levy from **10/01 through 9/30** each tax year. (Includes delinquent & current tax, penalty and interest)

<u>Tax Year</u> <u>Ending 9/30</u>	<u>Current Year</u> <u>Tax Levy (Adj.)</u>	<u>Current Year Tax, P&amp;I</u> <u>Collected as of 10/01</u>	<u>Prior Years Tax, P&amp;I</u> <u>Collected as of 10/01</u>	<u>Total Collections</u> <u>to Levy Ratio</u>
1995	\$35,435,592	\$35,104,977	\$ 631,215	100.85%
1996	\$37,719,194	\$37,395,760	\$ 758,271	101.18%
1997*	\$43,419,520	\$42,791,654	\$ 657,705	100.07%
1998	\$48,285,329	\$47,630,334	\$ 862,460	100.43%
1999	\$54,000,294	\$53,362,184	\$1,041,295	100.75%
2000	\$56,386,461	\$55,851,312	\$1,082,752	100.97%
2001	\$72,400,262	\$71,346,782	\$1,090,325	100.05%
2002	\$81,056,287	\$79,717,056	\$1,836,925	100.61%
2003	\$90,075,193	\$89,086,859	\$2,221,257	101.37%
2004	\$100,152,893	\$99,085,412	\$2,574,511	101.50%
2005	\$111,084,340	\$110,120,537	\$2,298,096	101.68%
2006	\$124,236,923	\$123,295,102	\$2,798,093	101.49%
2007	\$136,639,843	\$134,025,449	\$3,236,531	101.87%
2008	\$125,894,230	\$125,370,623	\$3,683,260	102.51%
2009	\$140,038,944	\$138,977,782	\$1,792,739	100.52%
2010	\$142,232,724	\$141,659,123	\$2,813,065	101.57%
2011	\$145,307,400	\$144,655,729	\$1,677,500	100.71%
2012	\$148,386,944	\$147,822,994	\$1,719,090	100.78%
2013	\$154,606,553	\$154,156,902	\$1,702,642	100.81%
2014	\$162,055,919	\$161,644,111	\$1,608,628	100.74%
2015	\$181,760,695	\$181,278,379	\$2,083,273	100.88%
2016	\$195,776,985	\$195,262,520	\$1,464,462	100.49%
2017	\$219,003,806	\$218,557,035	\$1,886,973	100.66%
<b>2018</b>	<b>\$245,737,977</b>	<b>\$245,304,370</b>	<b>\$2,092,180</b>	<b>100.68%</b>

\*Note: Sawko & Burroughs, P.C. began collecting for DISD 1/01/97, although most of the delinquency roll was first turned over after 7/01/97.

**II. PRIOR-YEAR delinquent collections from 10/01 through 9/30 of each tax year (all years except current year delinquencies).**

<u>Collections Year</u> <u>Ending 9/30 of:</u>	<u>% Collected</u>	<u>Tax Collected</u>	<u>Ending Balance</u>	<u>P&amp;I Collected</u>
1995	22.88%	\$464,251	\$1,564,654	\$166,963
1996	25.32%	\$550,638	\$1,593,316	\$207,632
1997*	22.84%	\$499,555	\$1,681,028	\$158,150
1998	25.78%	\$674,513	\$1,919,325	\$187,541
1999	27.01%	\$771,902	\$2,016,936	\$269,393
2000	27.58%	\$791,857	\$1,978,348	\$290,894
2001	25.88%	\$837,420	\$2,357,821	\$252,904
2002	35.77%	\$1,423,849	\$2,513,175	\$413,076
2003	36.43%	\$1,700,211	\$2,866,611	\$521,046
2004	39.47%	\$2,010,685	\$2,986,681	\$563,777
2005	33.46%	\$1,762,881	\$3,240,449	\$533,574
2006	40.27%	\$2,280,270	\$3,263,520	\$517,823
2007	42.55%	\$2,590,752	\$3,398,230	\$645,774
2008	42.06%	\$2,761,478	\$2,986,612	\$921,781
2009	28.50%	\$1,397,693	\$3,377,161	\$395,045
2010	37.88%	\$2,332,561	\$3,700,484	\$480,504
2011	31.92%	\$1,322,784	\$3,447,056	\$354,716
2012	29.00%	\$1,367,216	\$3,353,493	\$351,874
2013	29.16%	\$1,321,332	\$3,159,209	\$381,310
2014	25.42%	\$1,144,756	\$3,064,808	\$463,872
2015	34.89%	\$1,641,021	\$3,062,774	\$442,252
2016	27.11%	\$1,196,096	\$3,191,054	\$268,366
2017	37.18%	\$1,647,532	\$2,783,075	\$239,941
<b>2018</b>	<b>30.00%**</b>	<b>\$1,134,759</b>	<b>\$2,655,705</b>	<b>\$251,723</b>

\*Note: Sawko & Burroughs, P.C. began collecting for DISD 1/01/97, although most of the delinquency roll was first turned over after 7/01/97.

\*\* Percentage calculated from starting balance of prior year taxes, plus adjustments, divided into tax collected during the tax year.

**DISD TWENTY-FOUR YEAR COLLECTIONS HISTORY 1995-2018\***

**I. TOTAL COLLECTIONS** as a percentage of levy from **10/01 through 9/30** each tax year. (Includes delinquent & current tax, penalty and interest)

<u>Tax Year</u> <u>Ending 9/30</u>	<u>Current Year</u> <u>Tax Levy (Adj.)</u>	<u>Current Year Tax, P&amp;I</u> <u>Collected as of 10/01</u>	<u>Prior Years Tax, P&amp;I</u> <u>Collected as of 10/01</u>	<u>Total Collections</u> <u>to Levy Ratio</u>
1995	\$35,435,592	\$35,104,977	\$ 631,215	100.85%
1996	\$37,719,194	\$37,395,760	\$ 758,271	101.18%
1997*	\$43,419,520	\$42,791,654	\$ 657,705	100.07%
1998	\$48,285,329	\$47,630,334	\$ 862,460	100.43%
1999	\$54,000,294	\$53,362,184	\$1,041,295	100.75%
2000	\$56,386,461	\$55,851,312	\$1,082,752	100.97%
2001	\$72,400,262	\$71,346,782	\$1,090,325	100.05%
2002	\$81,056,287	\$79,717,056	\$1,836,925	100.61%
2003	\$90,075,193	\$89,086,859	\$2,221,257	101.37%
2004	\$100,152,893	\$99,085,412	\$2,574,511	101.50%
2005	\$111,084,340	\$110,120,537	\$2,298,096	101.68%
2006	\$124,236,923	\$123,295,102	\$2,798,093	101.49%
2007	\$136,639,843	\$134,025,449	\$3,236,531	101.87%
2008	\$125,894,230	\$125,370,623	\$3,683,260	102.51%
2009	\$140,038,944	\$138,977,782	\$1,792,739	100.52%
2010	\$142,232,724	\$141,659,123	\$2,813,065	101.57%
2011	\$145,307,400	\$144,655,729	\$1,677,500	100.71%
2012	\$148,386,944	\$147,822,994	\$1,719,090	100.78%
2013	\$154,606,553	\$154,156,902	\$1,702,642	100.81%
2014	\$162,055,919	\$161,644,111	\$1,608,628	100.74%
2015	\$181,760,695	\$181,278,379	\$2,083,273	100.88%
2016	\$195,776,985	\$195,262,520	\$1,464,462	100.49%
2017	\$219,003,806	\$218,557,035	\$1,886,973	100.66%
<b>2018</b>	<b>\$245,737,977</b>	<b>\$245,304,370</b>	<b>\$2,092,180</b>	<b>100.68%</b>

\*Note: Sawko & Burroughs, P.C. began collecting for DISD 1/01/97, although most of the delinquency roll was first turned over after 7/01/97.

**II. PRIOR-YEAR delinquent collections from 10/01 through 9/30 of each tax year (all years except current year delinquencies).**

<u>Collections Year</u> <u>Ending 9/30 of:</u>	<u>% Collected</u>	<u>Tax Collected</u>	<u>Ending Balance</u>	<u>P&amp;I Collected</u>
1995	22.88%	\$464,251	\$1,564,654	\$166,963
1996	25.32%	\$550,638	\$1,593,316	\$207,632
1997*	22.84%	\$499,555	\$1,681,028	\$158,150
1998	25.78%	\$674,513	\$1,919,325	\$187,541
1999	27.01%	\$771,902	\$2,016,936	\$269,393
2000	27.58%	\$791,857	\$1,978,348	\$290,894
2001	25.88%	\$837,420	\$2,357,821	\$252,904
2002	35.77%	\$1,423,849	\$2,513,175	\$413,076
2003	36.43%	\$1,700,211	\$2,866,611	\$521,046
2004	39.47%	\$2,010,685	\$2,986,681	\$563,777
2005	33.46%	\$1,762,881	\$3,240,449	\$533,574
2006	40.27%	\$2,280,270	\$3,263,520	\$517,823
2007	42.55%	\$2,590,752	\$3,398,230	\$645,774
2008	42.06%	\$2,761,478	\$2,986,612	\$921,781
2009	28.50%	\$1,397,693	\$3,377,161	\$395,045
2010	37.88%	\$2,332,561	\$3,700,484	\$480,504
2011	31.92%	\$1,322,784	\$3,447,056	\$354,716
2012	29.00%	\$1,367,216	\$3,353,493	\$351,874
2013	29.16%	\$1,321,332	\$3,159,209	\$381,310
2014	25.42%	\$1,144,756	\$3,064,808	\$463,872
2015	34.89%	\$1,641,021	\$3,062,774	\$442,252
2016	27.11%	\$1,196,096	\$3,191,054	\$268,366
2017	37.18%	\$1,647,532	\$2,783,075	\$239,941
<b>2018</b>	<b>30.00%**</b>	<b>\$1,134,759</b>	<b>\$2,655,705</b>	<b>\$251,723</b>

\*Note: Sawko & Burroughs, P.C. began collecting for DISD 1/01/97, although most of the delinquency roll was first turned over after 7/01/97.

\*\* Percentage calculated from starting balance of prior year taxes, plus adjustments, divided into tax collected during the tax year.

**III. CURRENT-YEAR delinquent collections from 10/01 through 9/30 each year. (Only the tax year going delinquent this year is included).**

<u>Year Ending 09/30 of:</u>	<u>% Collected end Sept.</u>	<u>% Collected end Feb.</u>	<u>% Collected From End February</u>
1995	98.50% (\$530,672 due)	95.45%	3.05% (thru 9/30/95)
1996	98.56% (\$540,265 due)	95.30%	3.26% (thru 9/30/96)
1997*	98.04% (\$849,137 due)	94.85%	3.19% (thru 9/30/97)
1998	98.10% (\$914,358 due)	94.66%	3.44% (thru 9/30/98)
1999	98.28% (\$925,866 due)	93.85% (\$3,296,178 due)	4.43% (thru 9/30/99)
2000	98.33% (\$938,040 due)	94.82% (\$2,908,757 due)	3.51% (thru 9/30/00)
2001	97.94% (\$1,486,901 due)	93.82% (\$4,459,037 due)	4.12% (thru 9/30/01)
2002	97.69% (\$1,864,773 due)	93.11% (\$5,587,242 due)	4.58% (thru 9/30/02)
2003	98.25% (\$1,573,855 due)	93.09% (\$6,190,609 due)	5.16% (thru 9/30/03)
2004	98.34% (\$1,657,685 due)	92.87% (\$7,120,884 due)	5.47% (thru 9/30/04)
2005	98.52% (\$1,643,093 due)	94.38% (\$6,233,293 due)	4.14% (thru 9/30/05)
2006	98.56% (\$1,777,999 due)	93.18% (\$8,475,772 due)	5.38% (thru 09/30/06)
2007	98.80% (\$1,614,394 due)	94.08% (\$8,043,353 due)	4.72% (thru 09/30/07)
2008	98.87% (\$1,420,193 due)	93.84 (\$7,764,058 due)	5.03% (thru 09/30/08)
2009	98.64% (\$1,901,145 due)	93.88% (\$8,577,424 due)	4.76% (thru 09/30/09)
2010	99.04% (\$1,363,041 due)	94.10% (\$8,385,591 due)	4.94% (thru 09/30/10)
2011	99.11% (\$1,278,825 due)	95.47% (\$6,596,286 due)	3.64% (thru 09/30/11)
2012	99.25% (\$1,105,704 due)	96.07% (\$5,833,519 due)	3.18% (thru 09/30/12)
2013	99.38% (\$950,357 due)	96.41% (\$5,540,686 due)	2.97% (thru 09/30/13)
2014	99.44% (\$893,727 due)	96.39% (\$5,866,088 due)	3.05% (thru 09/30/14)
2015	99.49% (\$915,325 due)	97.12% (\$5,256,453 due)	2.37% (thru 09/30/15)
2016	99.48% (\$1,013,121 due)	97.07% (\$5,754,100 due)	2.41% (thru 09/30/16)
2017	99.54% (\$1,007,388 due)	97.00% (\$6,585,468 due)	2.54% (thru 09/30/17)
<b>2018</b>	<b>99.60% (\$959,382 due)</b>	<b>97.54% (\$6,059,504 due)</b>	<b>2.06% (thru 09/30/18)**</b>

\*Note: Sawko & Burroughs, P.C. began collecting for DISD 1/01/97, although most of the delinquency roll was first turned over 7/01/97.

\*\* Each 1% of "Current-Year Delinquent" collections for the 2017-18 tax year = \$2,457,380.