



Weather Safety

Platform Overview

Keep your students safe and your staff informed with Perry Weather



HARLEM SCHOOL DISTRICT 122

Trusted by Schools **Nationwide**



“Everything has **run smoothly and I’m loving it!** I have been very excited to make the jump to Perry Weather. My athletic director had nothing but good things to say.”



Alex Fellows, Athletic Trainer
Mount Pleasant School

“Perry Weather seems to be the **most accurate and it breaks down the lightning by distance** so when I'm outside with my athletes I can know when it's time to go in.”



Loren Gallo, Athletic Trainer
Liberty Christian School (Argyle)

“The **WBG feature and the alerts** that go with it have been an extremely beneficial tool, especially since the new UIL guidelines.”



Kathy, Head Athletic Trainer
St. Stephen's Episcopal School



Powerful Hardware. **Easy to Use Software.**



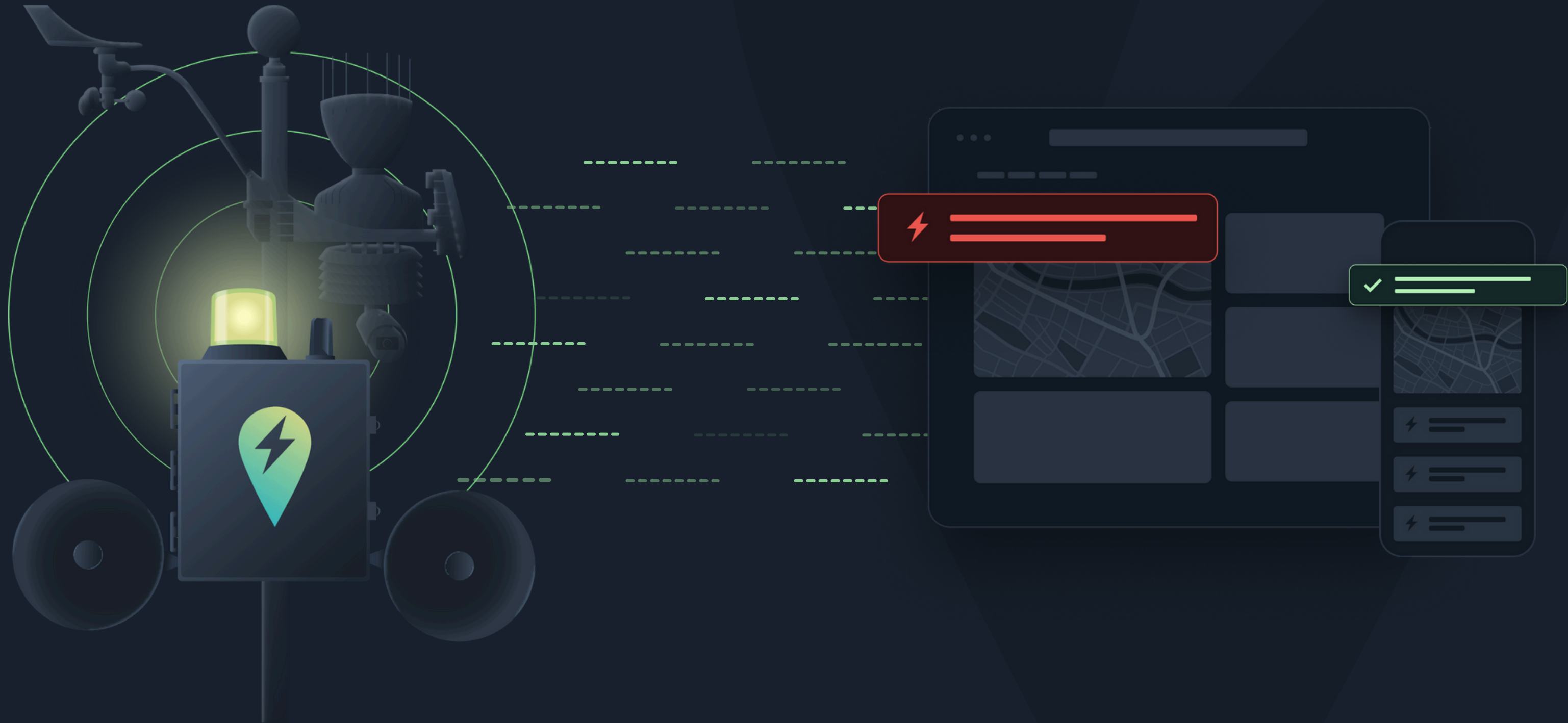
On-site weather station provides precise weather data from your specific location.



Monitor your school properties through one simple dashboard, accessible via mobile app or web browser.



Receive automatic alerts aligned with your weather policies via text, push notifications, or outdoor warning system.



Protect Your Student Athletes, Coaches, and Fans.

Keep Your Staff Updated.



On-Site Data

Monitor temperature, humidity, wind, rain, lightning, and heat stress (WBGT) in real-time.



Outdoor Warnings

Trigger manual alerts via PA with text-to-speech or mass text groups via the app.



Web + Mobile App

Access Perry Weather from anywhere, even on the go from mobile + desktop apps.



Policy Integrations

Predefined actions and alerts that trigger based on your school's weather policies.



Automated Alerts

Get notified for lightning, heat stress, and custom triggers or manual warnings.



Central Dashboard

Monitor weather conditions, forecasts, and alerts in one user-friendly platform.



Lightning Timers

Know exactly when it's safe to resume practice or games after a lightning strike.



Historical Data

Easily access or export historical weather data like WBGT and rainfall.

Automate Your Heat Stress Policy Management.

No Handhelds Required.

Policy Integration

Integrate your heat stress policies to guide you and your staff in taking the right actions.

No Fuss Monitoring

Stationary 3.5" WBGT monitor for accurate readings, eliminating the errors of handheld devices.

Historical Data

Get historical WBGT data for any period, with easy-to-export reports, automatically recorded by Perry Weather.

Automated Alerts

Actionable alerts via text or push notification, complete with clear, concise instructions to comply with heat stress policies.



WBGT Alert



Instant Notifications Powered By Your Weather Policies

1 Add Your Heat Stress Policy

Set your school's heat stress policy thresholds and select which individuals or groups get notified. (Our support team can do this for you.)

2 Customize Your Notifications

Customize notifications your staff receives when heat stress policies impact outdoor workouts, practices, or games.

3 Receive Instant Alerts

When heat stress policies are in effect, your staff receives instant notifications via mobile push notification or text message.

Wet Bulb Globe Temperature Policy

Update the notification settings you would like to enforce.

Policy * Wet Bulb Globe Temperature ▼

Notify at * 90.1 °F

All Clear * ⓘ 30 MIN

Apply to * Perry Weather Team ▼

Apply to all groups

Warning Settings Alert


Message | BLACK ZONE. WBGT has reached 92.1°F.


Additional message
Added to the end of the message above.
No outdoor workouts.

Warning Settings All Clear

Message | The Wet Bulb Globe Temperature has remained below policy threshold of 90.1°F for 30 mins as of 5:07 PM PM at your location.

Additional message
Added to the end of the message above.
Resume outdoor workouts.

 **Perry Weather**
BLACK ZONE. WBGT has reached 92.1°F.
No outdoor workouts.

 **Perry Weather**
 The Wet Bulb Globe Temperature has remained below policy threshold of 90.1°F for 30 mins as of 5:07 PM at your location. Resume outdoor workouts.

Accurate Lightning Detection With **Instant Alerts**



World Class Detection

Perry Weather gets its lightning data from the NLDN, the same network NASA and the US Coast Guard rely on. You'll get alerts in under 15 seconds after a strike happens on average.



Automated Alerts

Receive guided alerts via SMS, push notification, or outdoor warning systems so everyone knows what to do next.

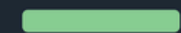


Countdown Timers

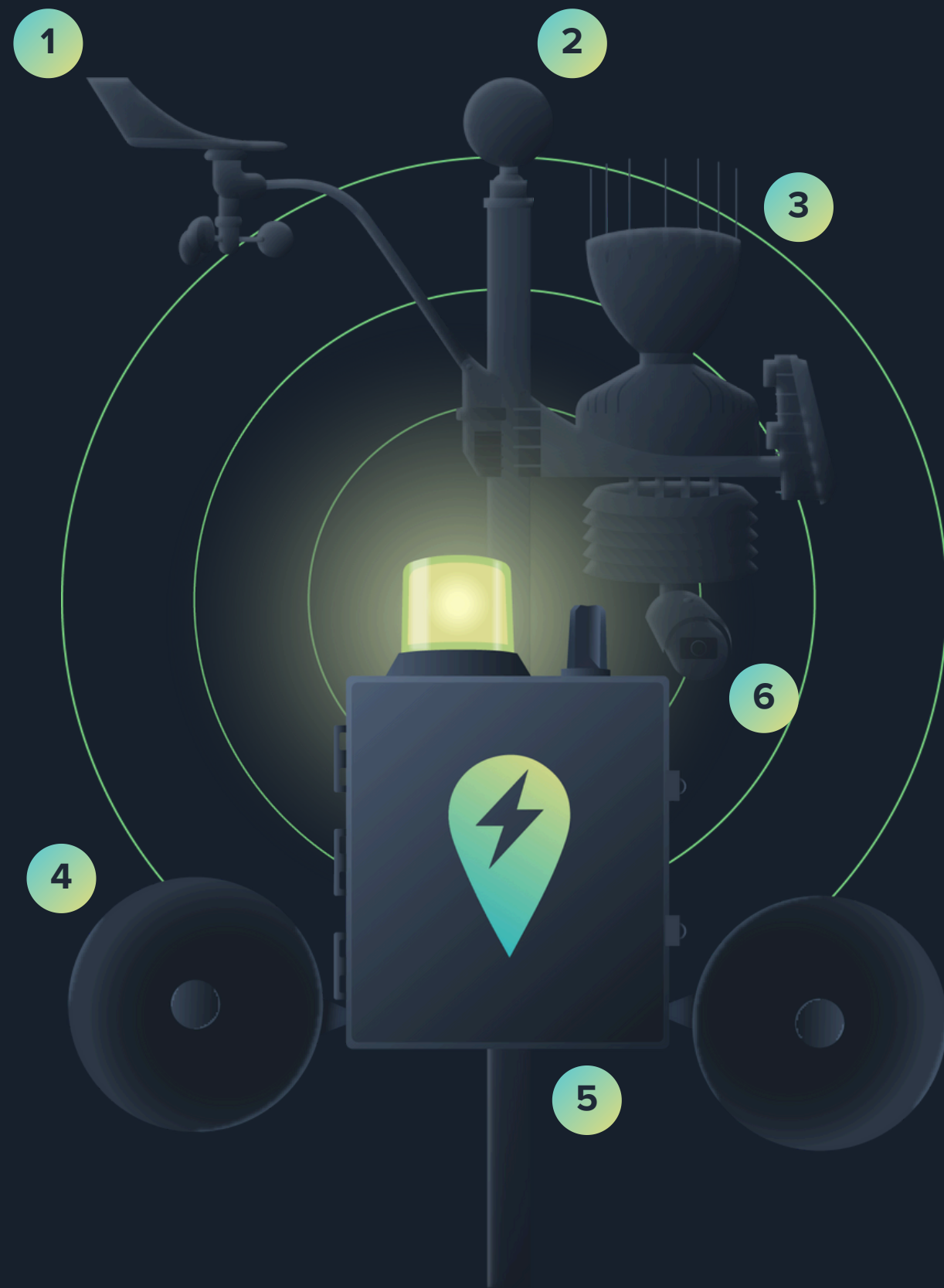
When lightning hits within your set policy ranges, countdown timers start, telling you exactly when activities can safely restart. If there's a new strike, the timer resets.



Lightning Status



On-Site Weather Station & Warning System with **Precise** Monitoring and Audible Alerts



1 Wind Gauge

Instrument that monitors wind speed and wind direction.

2 Black Bulb Sensor

3.5" commercial grade black bulb instrument for the most accurate wet bulb globe temperature (WBGT) readings.

3 Rain Gauge

Measures the precise on-location precipitation values over a given period of time.

4 127dB Siren/Speaker

Automatic siren sounds when lightning is detected. Manually trigger alerts with text-to-speech.

5 Housing Box

Watertight protection for internal components and 12V DC backup battery.

6 Streaming Camera

1080p HD camera captures images every hour. Live-streaming options available.

Monitor All School Properties From One Dashboard

1 Location Toggle

Toggle between locations to quickly see weather conditions for all properties in your school.

2 Current Conditions

Monitor current conditions such as temp, precipitation heat index, WBGT, and wind speed/direction.

3 Lightning Status

When lightning strikes within your policy ranges, a countdown timer begins so you know exactly when it's safe to resume activities. Timers reset after new strikes.

4 Historical Data

Monitor on-site weather data and access or export historical data.

- Wet Bulb Globe Temperature (WBGT)
- Temperature (°F)
- Precipitation
- Wind Speed

Monday, April 10, 2024 • You have **2 locations** in a policy warning

Perry Weather High School

[+ Add Location](#)

1 Perry Weather High School Image updated 41 minutes ago

2 Current Conditions [Historical →](#)

Temp: 67° Precip: 0.17" Feels: 67° WBGT: 68.2 Wind: 8

Conditions updated 1 minute ago

3 Lightning Status

0-10 mi: 29:37
10-20 mi: 29:16
20-30 mi: 28:55

4 WBGT

9AM: 67.2, 10AM: 69.5, 11AM: 68.2

5 Live Radar

6 Forecast Breakdown

	Sat 11 AM	Sat 12 PM	Sat 1 PM	Sat 2 PM	Sat 3 PM	Sat 4 PM
Precip	0.17"	0.17"	0.83"	0.83"	0.82"	0.78"
Temp	67°	67°	66°	67°	67°	66°
Precip	0.01"	0.03"	0.07"	0.07"	0.07"	0.07"
Feels	67°	67°	66°	67°	67°	66°
WBGT	69	69	68	69	68	67
Wind	8	10	10	13	13	13

7 Today's Policy Risks

Precip: High Chance exceeding 0.25 in Next 24hr

Policy Warnings in effect: **Lightning**

Low Risk Today: **WBGT, Wind Chill, Wind Speed**

5 Live Radar

Track storms with live or future radar. Monitor lightning strikes within your policy zones including ground strikes and cloud strikes.

6 Forecast Breakdown

Monitor current conditions such as temp, precipitation heat index, WBGT, and wind speed/direction.

7 Policy Risk Forecast

View hourly or 7-day forecasts for weather conditions like temperature, precipitation, heat index (feels like), wet bulb globe temperature (WBGT) and wind speed/wind direction.

We Don't Stop at Weather Monitoring and Alerts

Display Custom Widgets on Any Screen

Embed custom widgets that display weather conditions to the public on websites, hallway TVs, scoreboards, and more!



Perry Weather High School
Last Updated: 5/11/2024, 5:20 PM

89.2 WBGT

Clear 0-10 mi

93°F Temp

89.2 WBGT

0" Precip

5 Wind

24/7 Access to Pro Meteorologists

When decisions are difficult to make, or if you have an upcoming event with storms in the forecast, lean on the Perry Weather meteorologist team! Available via email, phone, or text 24/7!



Meteorologist 1:30

72°

Example Meteorologist Team Use Cases:

Storms on Graduation Day

You're in charge of operations on graduation day and a storm pops up in the middle of the ceremony. Do you move indoors, or wait until it clears? We'll help you make the call.

Unexpected Spike Forecasts

An unexpected heat spike disrupts training plans. Should you send your players back or push through? We'll help you adjust training schedules to keep athletes safe.

In-Game Lightning Advice

It's Friday night and you're in the second quarter when lightning strikes. Do you postpone the game or wait it out? We'll use our weather models to help you make the right call.

We Go Beyond Just Athlete Safety.

The Many Use Cases of Perry Weather.

1 Transportation

Manage busing schedules and school bus routes to prevent weather-related delays.

2 Safety and Security

Get active shooter and other security alerts through the custom PA alerts system.

3 Science Education

Integrate real-time weather data into the science curriculum for practical learning.

4 Field Trip Planning

Monitor WBGT and lightning data for safe outdoor learning experiences during field trips.

5 Facilities & Maintenance

Track weather patterns to optimize building temperature control and energy efficiency.

6 School Cancellations

Make informed decisions on school closures with real-time weather data.

7 Recess / PE Planning

Use real-time weather data to adjust recess schedules based on heat, rain, or air quality.

8 Band & Cheer Planning

Track temperatures and lightning to plan band, cheer, and dance practice.

...And Many More!

Outdoor Warning System Specifications



Power & Connectivity

Hard-wired (120V AC)
12V DC backup battery
100-watt solar panel (optional)
Dedicated cellular network



Warning System Features

Automatic or manual triggering
Custom alert times
Text & email notifications
Install anywhere
Text-to-speech
Integrates with weather station
Remote monitoring
Web & mobile app integration



Siren Specifications

127dB audible siren
Customizable horn direction

Additional sirens available upon request



High-vis Strobe Light



Installation Options

Assisted installation
Self installation
White glove installation

perry  weather

Outdoor Warning System **FAQ Sheet**



1 How does Perry Weather detect lightning?

Perry Weather uses the National Lightning Detection Network (NLDN), the same network NASA and the US Coast Guard rely on, to alert you when lightning strikes within a radius you choose, usually 10 miles from your facility.

2 Does the unit require wifi or wired internet?

No. Perry Weather Warning systems run on a private cellular VPN with automatic backups.

3 Where are they installed?

Typically on top of buildings or light poles, or other locations at your discretion (we can help).

4 How loud are the sirens?

Our 127dB siren sounds for lightning strike alerts that can be heard within a 1,500 ft radius. Volume levels can be adjusted down or up.

5 Will the sirens go off in the middle of the night?

No. Warning systems only sound during a set schedule of your choosing, allowing you to determine quiet times.

6 How is the unit powered?

Typically customers choose hardwire power for reliability, but if you need to place a unit in a more remote area, we have solar power available with battery backup.

7 How does the Public Address feature work?

Send text-to-speech messages from the Perry Weather mobile or desktop app to be heard through your outdoor warning system.

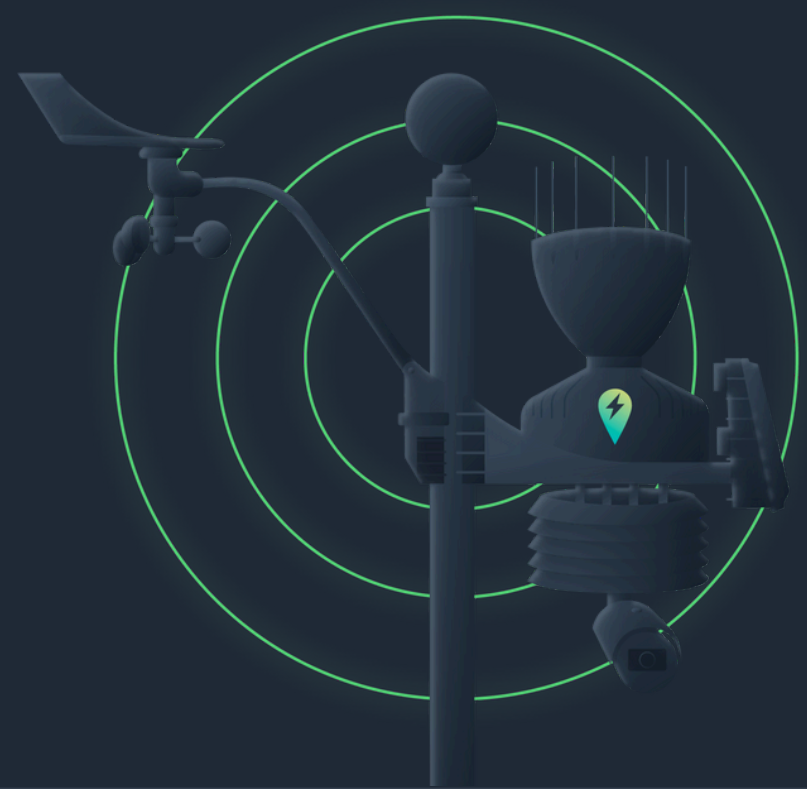
Example Use Cases:

In case of a storm during an event with many attendees, communicate through the PA system with a custom message to inform them about what to expect.

If a student goes missing at a track event, use the PA system to quickly broadcast a description of their appearance to assist in locating them

During a fire drill or lockdown, if students are outside, use the PA system to instruct everyone to stay outside until the lockdown has ended.

Weather Monitoring Station Specifications



3.5" Black Bulb Sensor



HD Wide Angle Camera



Wind Speed/Direction Gauge



On Board Sensors

- Air Quality
- Heat Index
- Humidity
- Precipitation
- Temperature
- Wind Chill
- Wind Direction
- Wind Speed
- Wet Bulb Globe Temperature (WBGT)



Power & Connectivity

Hard-wired (120V AC)
12V DC backup battery
100-watt solar panel (optional)
Dedicated cellular network



Installation Options

Assisted installation
Self installation
White glove full-installation

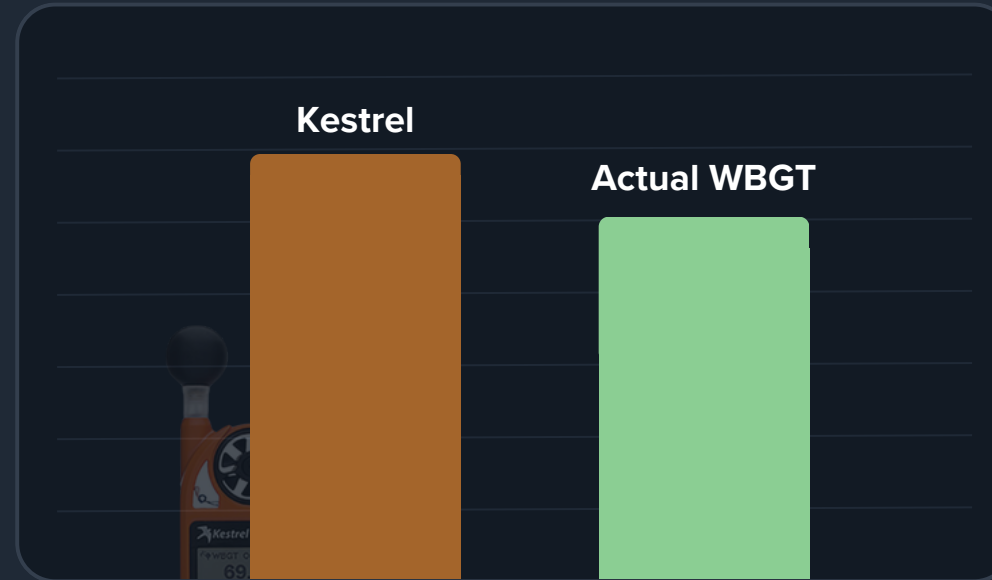


Why Handheld Devices **Don't Cut It**



Kestrel Devices Have a Bias For Higher Readings

Multiple independent studies have shown that Kestrel devices tend to provide readings that are higher than the actual WBGT. This becomes more pronounced as the WBGT values increase, resulting in activities being altered when they didn't need to be.



[Link to independent study](#)



Kestrel Can't Tell You What Actions to Take When Heat Stress Policy Limits Are Met

Kestrel devices are simply a measurement device. They aren't integrated with your heat stress policies, and they can't tell trainers and staff what to do next. Perry Weather alerts all coaches and staff what to do next via text + mobile notifications.



Perry Weather

■ BLACK ZONE. WBGT has reached 89.9°F. No outdoor workouts until cooler WBGT is reached.



Perry Weather

● ORANGE ZONE. WBGT has reached 87.7°F. Max practice time is 2H. Provide at least 4 separate rest breaks each hour min duration of 4min each.



Perry Weather

✓ The Wet Bulb Globe Temperature has remained below policy threshold of 79.6°F for 30 mins as of 5:07 PM at your location. Resume outdoor workouts.



Where Kestrel Comes up Short

3.5" ISO-standard black bulb
Larger bulbs provide more accurate readings

Solar radiation shield
Maintains a controlled environment around the temp sensor

No setup, no calibration
Eliminates human error and calibration issues

Automated heat stress policy alerts
Instant notifications with clear instructions for your AT and coaching staff

Automated historical logging and exporting
No need for a bluetooth connection to log WBGT values

perry weather

Kestrel



Perry Weather vs ThorGuard

Perry Weather

ThorGuard

User-Friendly Mobile App and Web Dashboard



Black Bulb Sensor for Accurate WBGT Monitoring



GPS Tracking and Alerts for Unlimited Locations



Customizable Quiet Times and Alerts via Text (SMS), Push Notifications, Email



24/7 Live Meteorologist Support



Quick Installation Time Under 6 Weeks



Perry Weather vs Free Apps

Perry Weather

Free Apps

Mobile App and Web Dashboard



Real-Time On-Site Weather Monitoring Data



GPS Tracking and Alerts for Unlimited Locations



Customizable Quiet Times and Alerts via Text (SMS),
Push Notifications, Email



Alert Warnings with Sirens and Strobe Lights



24/7 Live Meteorologist Support



Frequently Asked Questions

How many of my staff members can access the software?

Perry Weather supports unlimited users on your account, from admin to basic text only users, starting with 10.

Does Perry Weather stop play if lightning is detected during a game or practice?

You set the rules! Perry Weather triggers custom alerts based on your lightning policies (e.g., pause play, seek shelter). You decide if it pauses games.

How do we set up all of our users and weather policies?

Let us handle everything for you. Your personal account manager will set up your weather policies and user accounts, ensuring you're all set and ready to go.

What kind of weather conditions can Perry Weather warn us about?

We monitor a variety of weather hazards like lightning, heat stress (WBGT), precipitation, air quality, wind speed, and more! All with alerts based on your chosen thresholds.

How accurate are your weather stations compared to my phone weather app?

Mobile app forecasts often capture data from nearby airport weather stations, not the microclimates specific to your location. Our on-site stations provide hyperlocal, minute-by-minute data, far more accurate data.

How is your WBGT measurement different from handheld devices?

Perry Weather's outdoor weather station is equipped with a more capable 3.5" diameter black bulb, providing precise and timely WBGT readings without any need for calibration or waiting time.

Thank You

To learn more about Perry Weather visit us at perryweather.com

