

LEGAL DESCRIPTION

BEING across a tract of land situated in the J. Curtis Survey, Abstract No. 196 and the G. W. Gunnell Survey, Abstract No. 351 Collin county, Texas, and being across a called 9.689 acres tract conveyed to Collin County Community District as recorded in County Clerks No. 20161215001702780, Land Records of Collin County, Texas, being across a called 9.719 acres tract conveyed to Collin county Community District as recorded in County Clerks No. 20170123000100100, Land Records of Collin County, Texas, being across a called 23.888 acres tract conveyed to Collin County Community District as recorded in County Clerks No. 20160923001280200, Land Records of Collin County, Texas, being across Lot 2, Block A, Wylie Civic Center Addition, an Addition to the City of Wylie, Collin County, Texas, according to the Plat thereof recorded in Volume 2011, Page 56, Plat Records Collin County, Texas and conveyed to Collin County Community District as recorded in County Clerks No. 20161216001707960, Land Records of Collin County, Texas, and being across a called 9.994 acre tract conveyed to Collin County Community College District as recorded in County Clerks No. 005-02495-2017, Court Records of Collin County, Texas and being more particularly described by metes and bound as follows:

BEGINNING at a Txdot aluminum cap found for corner in the north line of said called 9.689 acre tract, said aluminum cap also being at the southwest corner of Lot 1, Block A, Wylie Fire Station No. 2 as recorded in Cabinet P, Page 511, P.R.C.C.T., said aluminum cap being in the west Right Of Way line of F.M. No. 1378;

THENCE S 00°31'07" E following the west Right Of Way line of F.M. No. 1378a distance of 268.18' to a Txdot aluminum cap found for corner;

THENCE S 01°03'53" W a distance of 231.65' to a point;

THENCE S 88°56'07" E a distance of 16.20' to a point;

THENCE S 04°53'33" E a distance of 15.08' to a point;

THENCE N 88°56'07" W a distance of 17.76' to a point;

THENCE S 01°03'53" W a distance of 122.29' to a point;

THENCE S 64°37'46" E a distance of 35.15' to a point in the west Right Of Way line of F.M. No. 1378;

THENCE S 04°53'33" E following the west Right Of Way line of F.M. No. 1378 a distance of 8.12' to a capped 1/2" iron rod found;

THENCE S 01°26'24" E following the west Right Of Way line of F.M. No. 1378 a distance of 19.86' to a point;

THENCE S 79°38'30" W a distance of 34.43' to a point;

THENCE S 01°03'53" W a distance of 12.45' to a point;

THENCE S 88°56'07" E a distance of 34.59' to a point in the west Right Of Way line of F.M. No. 1378;

THENCE S 01°26'24" E following the west Right Of Way line of F.M. No. 1378 a distance of 15.01' to a point;

THENCE N 88°56'07" W a distance of 35.24' to a point;

THENCE S 01°03'53" W a distance of 79.42' to a point;

THENCE S 00°29'41" E a distance of 215.60' to a point;

THENCE S 88°43'42" E a distance of 30.01' to a point in the west Right Of Way line of F.M. No. 1378;

THENCE S 00°29'41" E following the west Right Of Way line of F.M. No. 1378 a distance of 7.83' to a Txdot aluminum cap found for corner;

THENCE S 04°02'24" W following the west Right Of Way line of F.M. No. 1378 a distance of 7.18' to a point;

THENCE N 88°43'42" W a distance of 30.04' to a point;

THENCE S 04°02'24" W a distance of 156.54' to a point at the beginning of a non-tangent curve to the right;

THENCE along said curve to the right through a central angle of 12°06'11", a radius of 2073.89', an arc length of 438.08', with a chord bearing of S 20°49'50" W, and a chord length of 437.27' to a point;

THENCE S 29°21'00" W a distance of 166.32' to a point;

THENCE S 34°34'45" W a distance of 313.18' to a point;

THENCE S 35°00'28" W a distance of 74.81' to a point;

THENCE S 54°59'32" E a distance of 30.00' to a point in the west Right Of Way line of F.M. No. 1378;

THENCE S 35°00'28" W following the west Right Of Way line of F.M. No. 1378 a distance of 15.00' to a point;

SURDUKAN SURVEYING, INC.

P.O. BOX 126
ANNA, TEXAS 75409
(972) 924-8200
TEXAS FIRM NO. 10069500

EXHIBIT A
ONCOR ELECTRIC DELIVERY COMPANY, LLC
COLLIN COUNTY COMMUNITY
COLLEGE DISTRICT
WYLIE CAMPUS
CITY OF WYLIE
COLLIN COUNTY, TEXAS

THENCE N 54°59'32" W a distance of 30.00' to a point;
 THENCE S 35°00'28" W a distance of 411.41' to a point;
 THENCE S 35°44'04" E a distance of 31.95' to a point in the west Right Of Way line of F.M. No. 1378;
 THENCE S 32°49'41" W following the west Right Of Way line of F.M. No. 1378 a distance of 16.11' to a point;
 THENCE N 35°44'04" W a distance of 32.23' to a point;
 THENCE S 32°49'41" W a distance of 167.05' to a point;
 THENCE S 18°47'44" E a distance of 38.27' to a point in the west Right Of Way line of F.M. No. 1378;
 THENCE S 32°49'41" W following the west Right Of Way line of F.M. No. 1378 a distance of 32.20' to a 5/8" iron rod found for corner;
 THENCE S 31°50'10" W following the west Right Of Way line of F.M. No. 1378 a distance of 51.18' to a point;
 THENCE N 18°47'44" W a distance of 58.53' to a point;
 THENCE N 32°49'41" E a distance of 247.31' to a point;
 THENCE N 35°00'28" E a distance of 34.56' to a point;
 THENCE N 54°59'32" W a distance of 20.00' to a point;
 THENCE N 35°00'28" E a distance of 50.00' to a point;
 THENCE S 54°59'32" E a distance of 20.00' to a point;
 THENCE N 35°00'28" E a distance of 423.73' to a point;
 THENCE N 34°34'45" E a distance of 312.44' to a point;
 THENCE N 29°21'00" E a distance of 165.31' to a point at the beginning of a non-tangent curve to the left;
 THENCE along said curve to the left through a central angle of 12°03'17", a radius of 2058.89', an arc length of 433.18', with a chord bearing of N 20°50'45" E, and a chord length of 432.38;
 THENCE N 04°02'24" E a distance of 161.98' to a point;
 THENCE N 00°29'41" W a distance of 222.78' to a point;
 THENCE N 01°03'53" E a distance of 33.73' to a point;
 THENCE WEST a distance of 338.77' to a point;
 THENCE SOUTH a distance of 98.30' to a point;
 THENCE N 89°49'41" E a distance of 5.00' to a point;
 THENCE SOUTH a distance of 20.00' to a point;
 THENCE WEST a distance of 20.00' to a point;
 THENCE NORTH a distance of 20.00' to a point;
 THENCE S 89°56'34" E a distance of 5.00' to a point;
 THENCE NORTH a distance of 98.29' to a point;
 THENCE WEST a distance of 42.79' to a point;
 THENCE SOUTH a distance of 10.00' to a point;
 THENCE WEST a distance of 20.00' to a point;
 THENCE NORTH a distance of 10.00';
 THENCE WEST a distance of 569.78' to a point at the beginning of a tangent curve to the left;
 THENCE along said curve to the left through a central angle of 41°24'35", a radius of 95.00', an arc length of 68.66', with a chord bearing of S 69°17'43" W, and a chord length of 67.18' to a point of reverse curve;
 THENCE along said reverse curve to the right through a central angle of 38°23'14", a radius of 25.00', an arc length of 16.75', with a chord bearing of S 67°47'02" W, and a chord length of 16.44' to a point;
 THENCE SOUTH a distance of 5.03' to a point;
 THENCE WEST a distance of 10.00' to a point;
 THENCE SOUTH a distance of 96.75' to a point;
 THENCE S 11°00'00" W a distance of 398.31' to a point;
 THENCE S 78°39'26" E a distance of 112.75' to a point;
 THENCE N 11°00'00" E a distance of 5.00' to a point;
 THENCE S 79°00'00" E a distance of 20.00' to a point;
 THENCE S 11°00'00" W a distance of 20.00' to a point;

SURDUKAN SURVEYING, INC.

P.O. BOX 126
 ANNA, TEXAS 75409
 (972) 924-8200
 TEXAS FIRM NO. 10069500

EXHIBIT A
 ONCOR ELECTRIC DELIVERY COMPANY, LLC
 COLLIN COUNTY COMMUNITY
 COLLEGE DISTRICT
 WYLIE CAMPUS
 CITY OF WYLIE
 COLLIN COUNTY, TEXAS

THENCE N 11°00'00" E a distance of 5.00' to a point;
 THENCE N 78°39'25" W a distance of 122.75' to a point;
 THENCE N 11°00'00" E a distance of 407.29' to a point;
 THENCE NORTH a distance of 95.79' to a point;
 THENCE WEST a distance of 10.00' to a point;
 THENCE NORTH a distance of 5.00' to a point;
 THENCE WEST a distance of 242.51' to a point;
 THENCE S 86°21'42" W a distance of 42.92' to a point;
 THENCE SOUTH a distance of 5.28' to a point;
 THENCE WEST a distance of 20.00' to a point;
 THENCE NORTH a distance of 20.00' to a point;
 THENCE EAST a distance of 20.00' to a point;
 THENCE SOUTH a distance of 4.70' to a point;
 THENCE N 86°21'42" E a distance of 42.61' to a point;
 THENCE N 90°00'00" E a distance of 242.83' to a point;
 THENCE NORTH a distance of 5.00' to a point;
 THENCE EAST a distance of 30.00' to a point;
 THENCE SOUTH a distance of 4.94' to a point at the beginning of a tangent curve to the left;
 THENCE along said curve to the left through a central angle of 36°22'06", a radius of 15.00', an arc length of 9.52', with a chord bearing of N 66°46'28" E, and a chord length of 9.36' to a point of reverse curve;
 THENCE along said reverse curve to the right through a central angle of 41°24'35", a radius of 105.00', an arc length of 75.89', with a chord bearing of N 69°17'43" E, and a chord length of 74.25' to a point;
 THENCE EAST a distance of 318.97' to a point;
 THENCE NORTH a distance of 17.19' to a point;
 THENCE WEST a distance of 5.00' to a point;
 THENCE NORTH a distance of 20.00' to a point;
 THENCE EAST a distance of 20.00' to a point;
 THENCE SOUTH a distance of 20.00' to a point;
 THENCE WEST a distance of 5.00' to a point;
 THENCE SOUTH a distance of 17.19' to a point;
 THENCE N 90°00'00" E a distance of 240.81' to a point;
 THENCE NORTH a distance of 10.00' to a point;
 THENCE EAST a distance of 20.00' to a point;
 THENCE SOUTH a distance of 10.00' to a point;
 THENCE N 90°00'00" E a distance of 381.75' to a point;
 THENCE N 01°03'53" E a distance of 212.52' to a point;
 THENCE N 88°56'07" W a distance of 10.00' to a point;
 THENCE N 01°03'53" E a distance of 60.00' to a point;
 THENCE S 88°56'07" E a distance of 20.00' to a point;
 THENCE N 01°03'53" E a distance of 208.94' to a point;
 THENCE N 00°31'07" W a distance of 268.21' to a point;
 THENCE S 89°37'44" E a distance of 15.00' to the POINT OF BEGINNING and containing 76,524 Square Feet or 1.757 Acres of land.



SURDUKAN SURVEYING, INC.

P.O. BOX 126
 ANNA, TEXAS 75409
 (972) 924-8200
 TEXAS FIRM NO. 10069500

EXHIBIT A
 ONCOR ELECTRIC DELIVERY COMPANY, LLC
 COLLIN COUNTY COMMUNITY
 COLLEGE DISTRICT
 WYLIE CAMPUS
 CITY OF WYLIE
 COLLIN COUNTY, TEXAS

LOT 1, BLOCK A
WYLIE FIRE STATION NO. 2
CABINET P. PAGE 511
P.R.C.C.T.

CALLED 9.689 ACRES
COLLIN COUNTY COMMUNITY
COLLEGE DISTRICT
C.C. NO. 20161215001702780

CALLED 9.719 ACRES
COLLIN COUNTY COMMUNITY
COLLEGE DISTRICT
C.C. NO. 20170123000100100

COLLIN COUNTY COMMUNITY
COLLEGE DISTRICT
AGREED FINAL JUDGEMENT
NO. 005-02495-2017

POINT OF BEGINNING

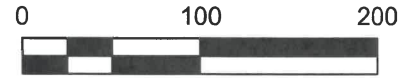
TXDOT ALUMIUM CAP
FOUND - C.M.

TXDOT ALUMIUM CAP
FOUND - C.M.

FM No. 1378 / COUNTRY CLUB ROAD

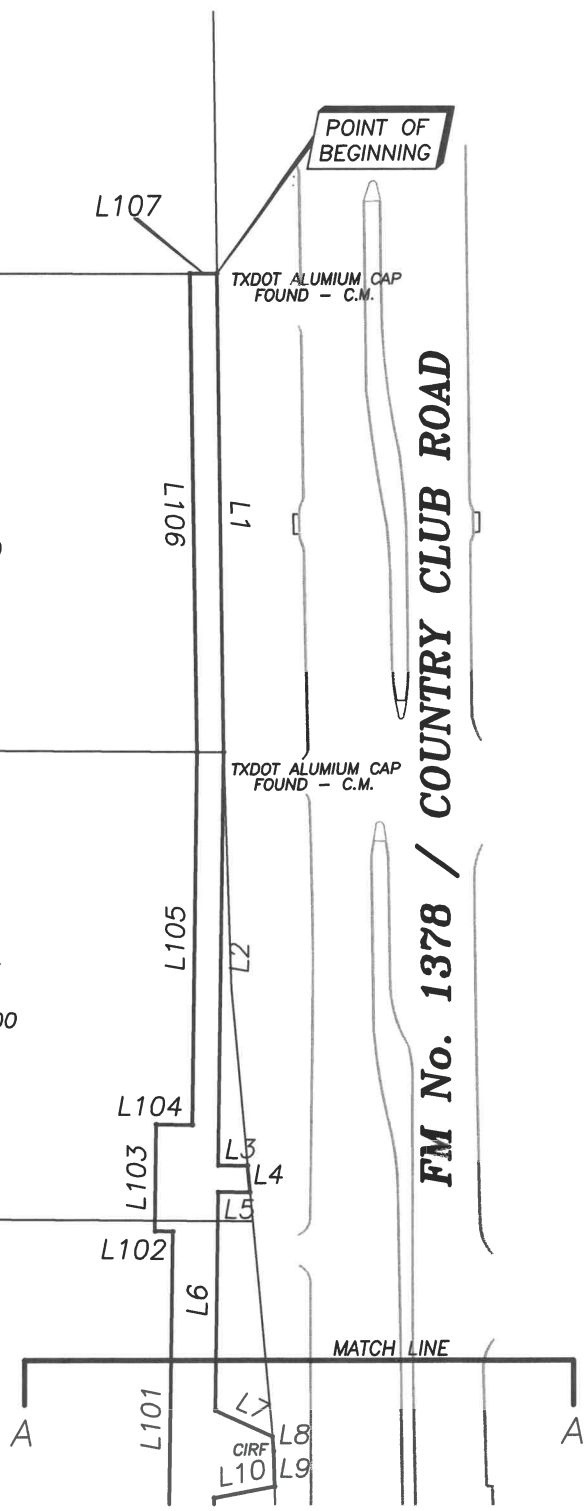


NORTH



LEGEND

C.M. = CONTROLLING MONUMENT
CIRF = CAPPED 1/2" IRON ROD
FOUND

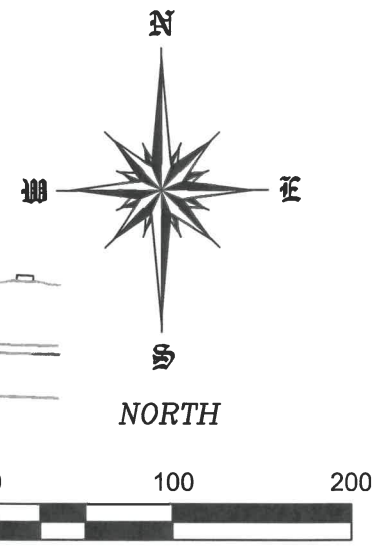
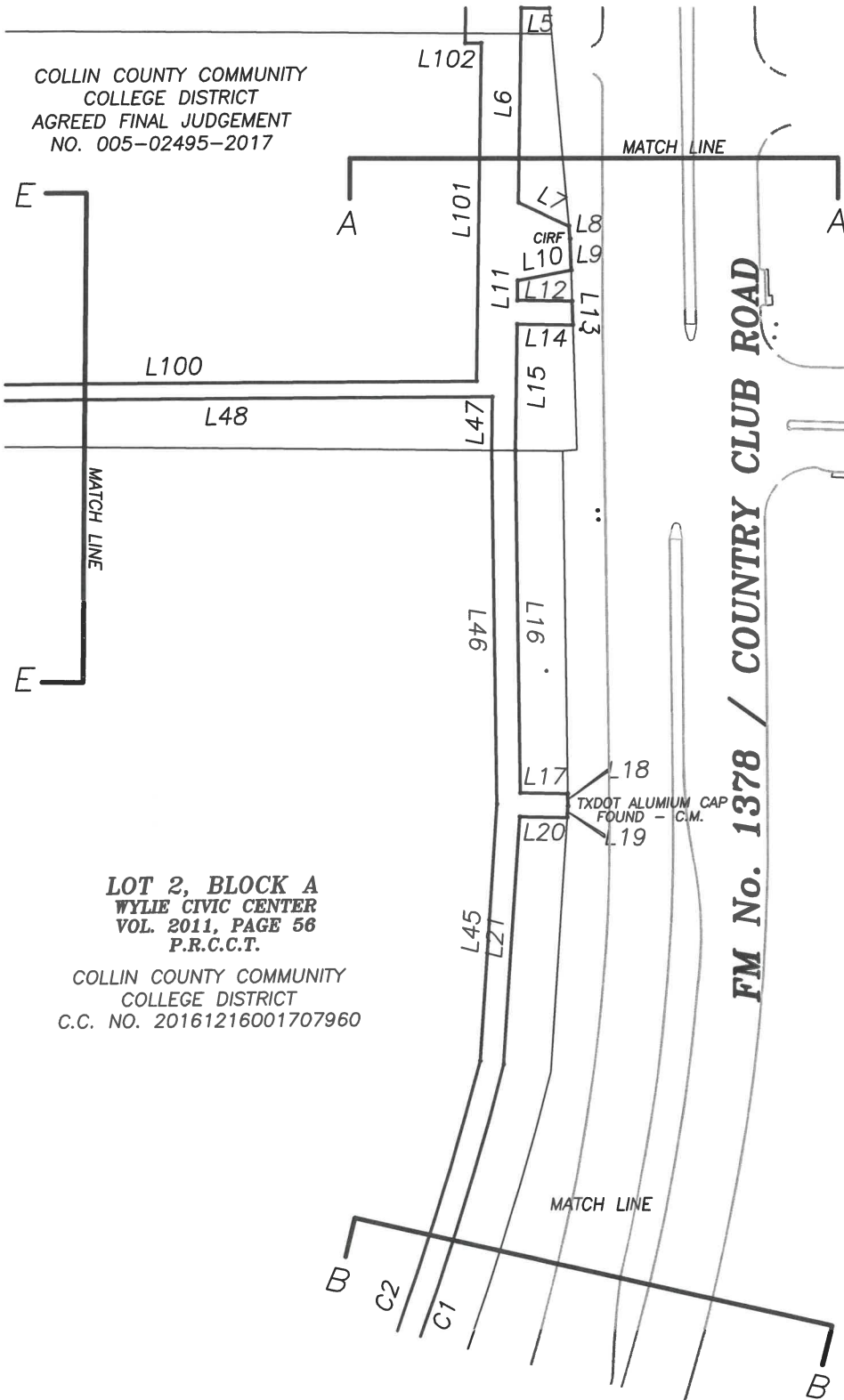


SURDUKAN SURVEYING, INC.

P.O. BOX 126
ANNA, TEXAS 75409
(972) 924-8200
TEXAS FIRM NO. 10069500

EXHIBIT A
ONCOR ELECTRIC DELIVERY COMPANY, LLC
COLLIN COUNTY COMMUNITY
COLLEGE DISTRICT
WYLIE CAMPUS
CITY OF WYLIE
COLLIN COUNTY, TEXAS

COLLIN COUNTY COMMUNITY
COLLEGE DISTRICT
AGREED FINAL JUDGEMENT
NO. 005-02495-2017



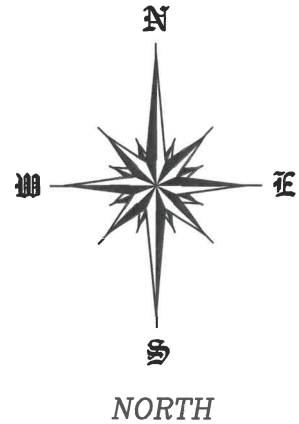
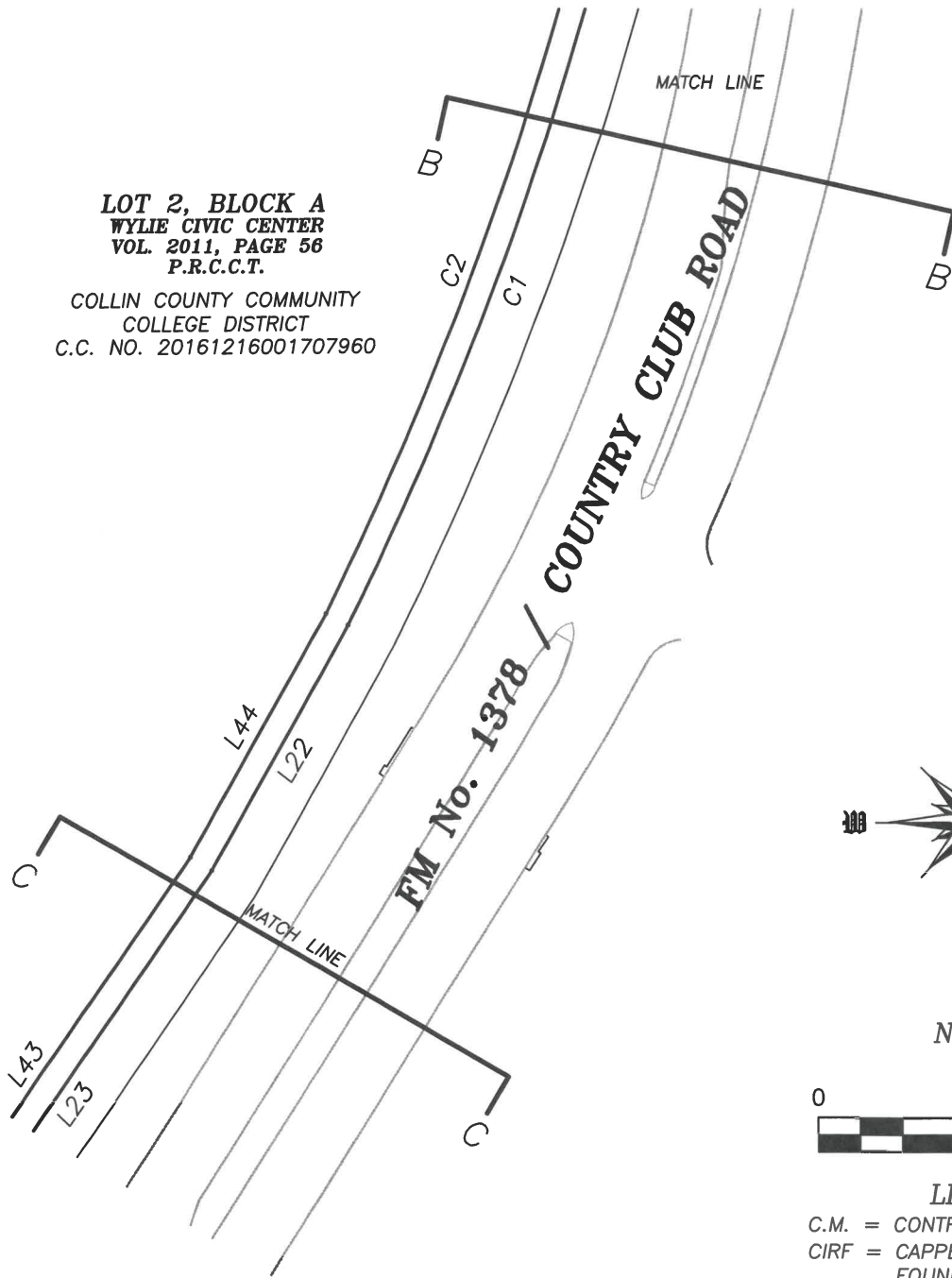
LEGEND
C.M. = CONTROLLING MONUMENT
CIRF = CAPPED 1/2" IRON ROD
FOUND

**LOT 2, BLOCK A
WYLIE CIVIC CENTER
VOL. 2011, PAGE 56
P.R.C.C.T.**
COLLIN COUNTY COMMUNITY
COLLEGE DISTRICT
C.C. NO. 20161216001707960

SURDUKAN SURVEYING, INC.
P.O. BOX 126
ANNA, TEXAS 75409
(972) 924-8200
TEXAS FIRM NO. 10069500

EXHIBIT A
ONCOR ELECTRIC DELIVERY COMPANY, LLC
COLLIN COUNTY COMMUNITY
COLLEGE DISTRICT
WYLIE CAMPUS
CITY OF WYLIE
COLLIN COUNTY, TEXAS

LOT 2, BLOCK A
WYLIE CIVIC CENTER
VOL. 2011, PAGE 56
P.R.C.C.T.
 COLLIN COUNTY COMMUNITY
 COLLEGE DISTRICT
 C.C. NO. 20161216001707960

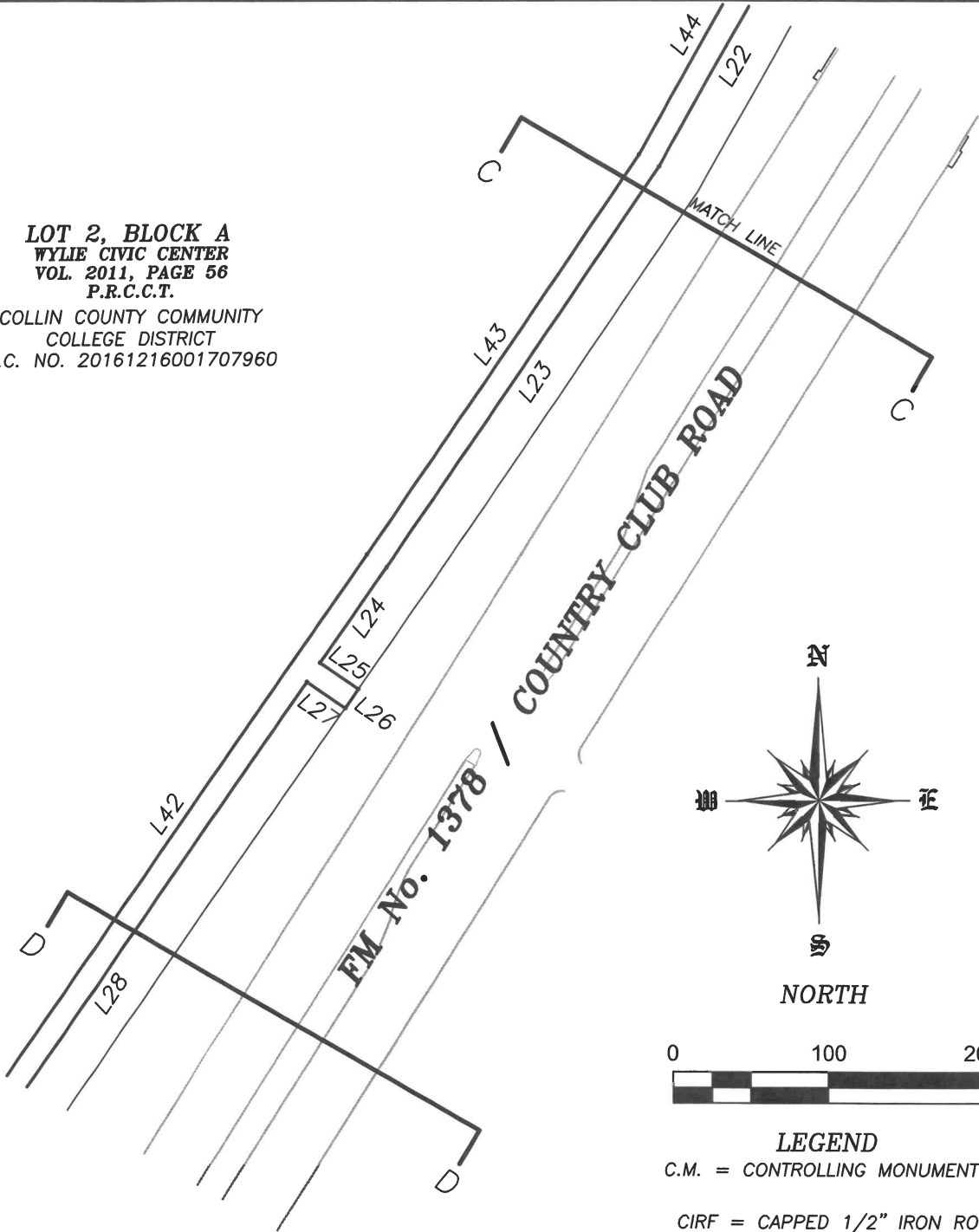


LEGEND
 C.M. = CONTROLLING MONUMENT
 CIRF = CAPPED 1/2" IRON ROD
 FOUND

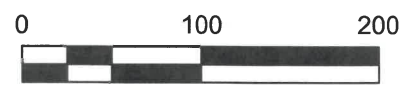
SURDUKAN SURVEYING, INC.
 P.O. BOX 126
 ANNA, TEXAS 75409
 (972) 924-8200
 TEXAS FIRM NO. 10069500

EXHIBIT A
 ONCOR ELECTRIC DELIVERY COMPANY, LLC
 COLLIN COUNTY COMMUNITY
 COLLEGE DISTRICT
 WYLIE CAMPUS
 CITY OF WYLIE
 COLLIN COUNTY, TEXAS

LOT 2, BLOCK A
WYLIE CIVIC CENTER
VOL. 2011, PAGE 56
P.R.C.C.T.
 COLLIN COUNTY COMMUNITY
 COLLEGE DISTRICT
 C.C. NO. 20161216001707960



NORTH



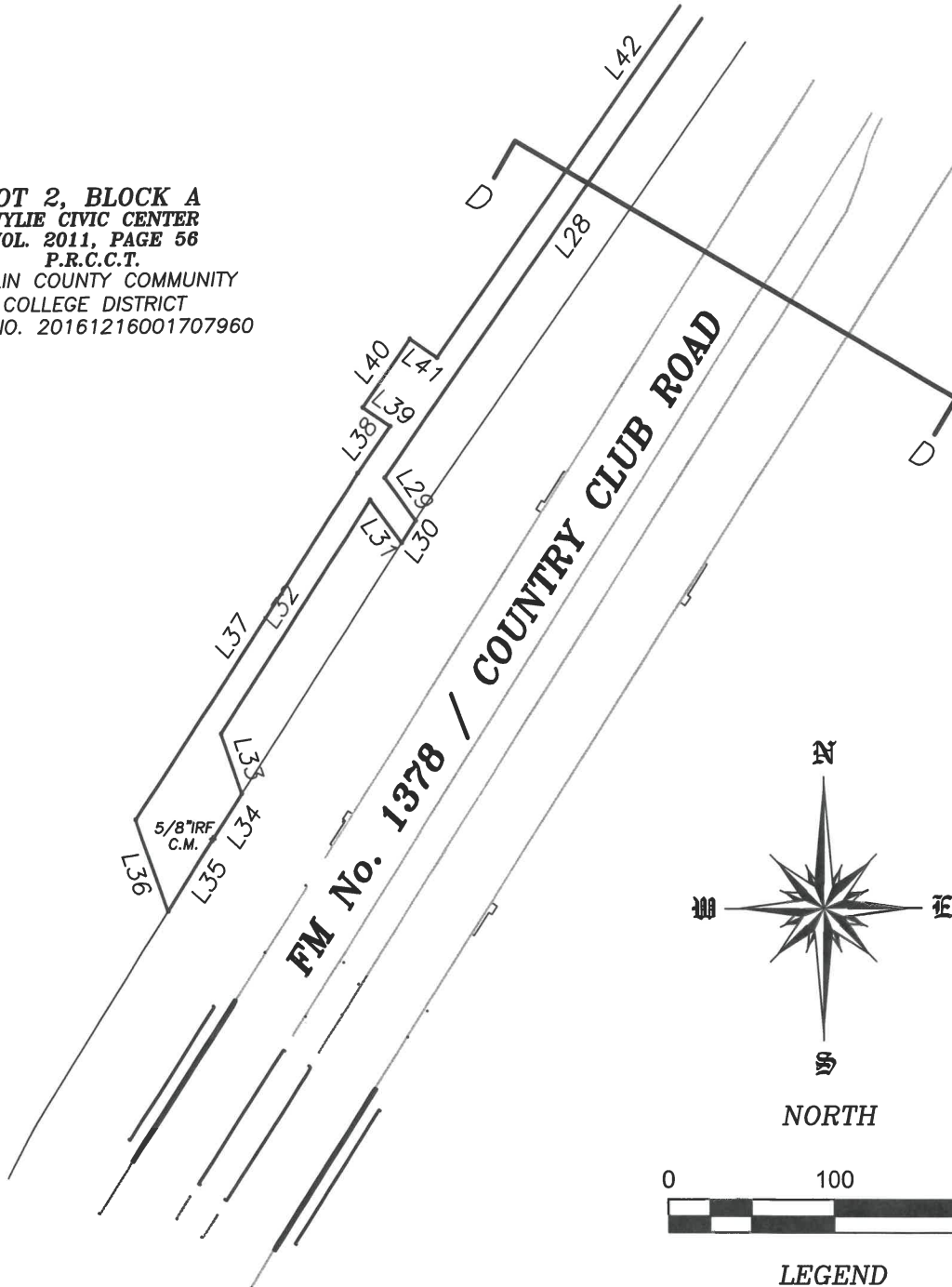
LEGEND

- C.M. = CONTROLLING MONUMENT
- CIRF = CAPPED 1/2" IRON ROD FOUND

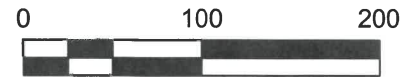
SURDUKAN SURVEYING, INC.
 P.O. BOX 126
 ANNA, TEXAS 75409
 (972) 924-8200
 TEXAS FIRM NO. 10069500

EXHIBIT A
 ONCOR ELECTRIC DELIVERY COMPANY, LLC
 COLLIN COUNTY COMMUNITY
 COLLEGE DISTRICT
 WYLIE CAMPUS
 CITY OF WYLIE
 COLLIN COUNTY, TEXAS

LOT 2, BLOCK A
WYLIE CIVIC CENTER
VOL. 2011, PAGE 56
P.R.C.C.T.
 COLLIN COUNTY COMMUNITY
 COLLEGE DISTRICT
 C.C. NO. 20161216001707960



NORTH



LEGEND

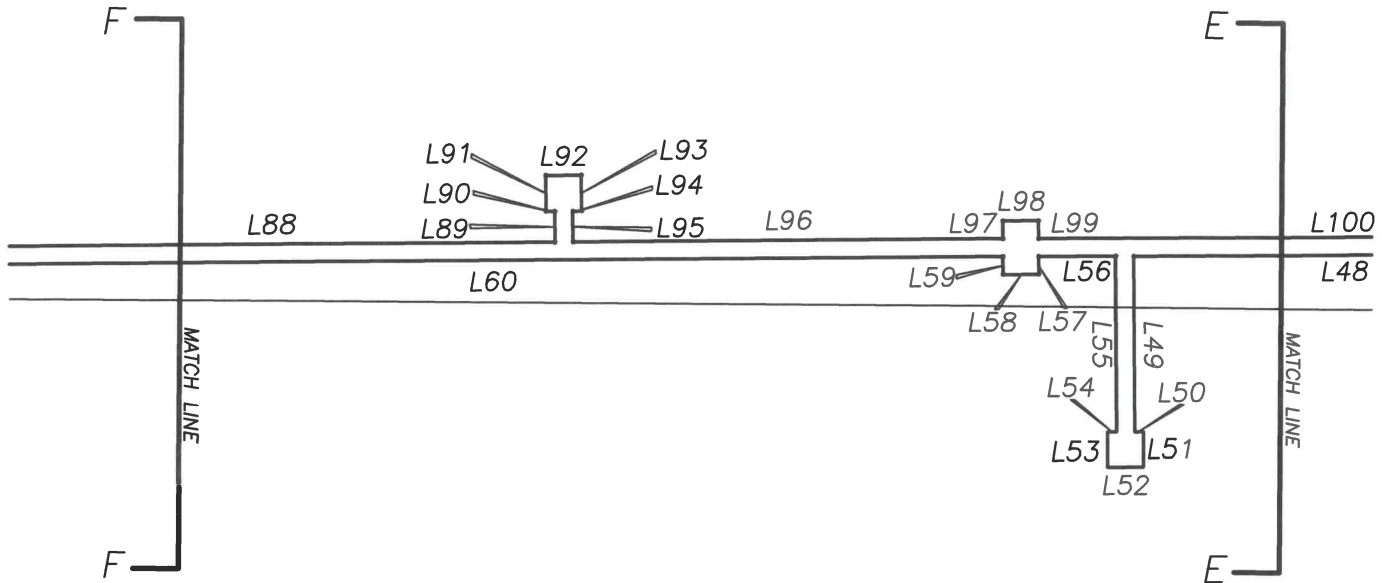
C.M. = CONTROLLING MONUMENT
 CIRF = CAPPED 1/2" IRON ROD
 FOUND

SURDUKAN SURVEYING, INC.

P.O. BOX 126
 ANNA, TEXAS 75409
 (972) 924-8200
 TEXAS FIRM NO. 10069500

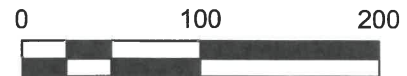
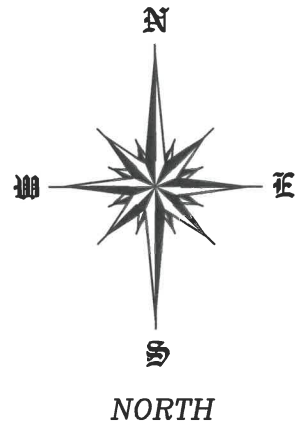
EXHIBIT A
 ONCOR ELECTRIC DELIVERY COMPANY, LLC
 COLLIN COUNTY COMMUNITY
 COLLEGE DISTRICT
 WYLIE CAMPUS
 CITY OF WYLIE
 COLLIN COUNTY, TEXAS

COLLIN COUNTY COMMUNITY
 COLLEGE DISTRICT
 AGREED FINAL JUDGEMENT
 NO. 005-02495-2017



LOT 2, BLOCK A
WYLIE CIVIC CENTER
VOL. 2011, PAGE 56
P.R.C.C.T.

COLLIN COUNTY COMMUNITY
 COLLEGE DISTRICT
 C.C. NO. 20161216001707960



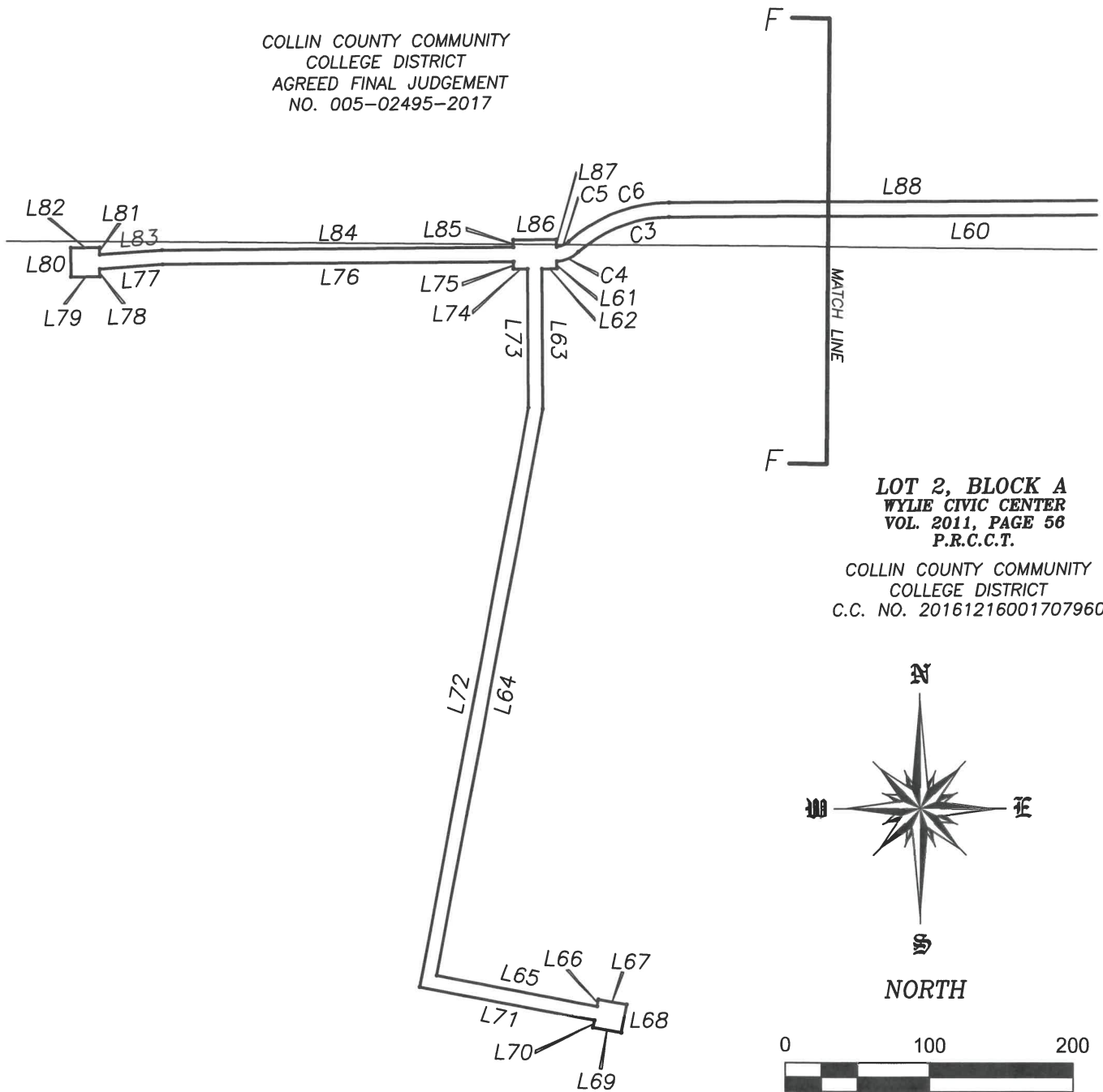
LEGEND

C.M. = CONTROLLING MONUMENT
 CIRF = CAPPED 1/2" IRON ROD
 FOUND

SURDUKAN SURVEYING, INC.
 P.O. BOX 126
 ANNA, TEXAS 75409
 (972) 924-8200
 TEXAS FIRM NO. 10069500

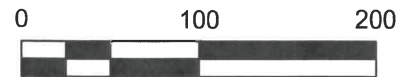
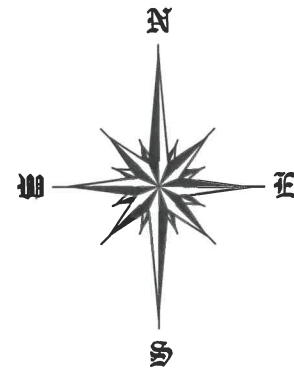
EXHIBIT A
ONCOR ELECTRIC DELIVERY COMPANY, LLC
COLLIN COUNTY COMMUNITY
COLLEGE DISTRICT
WYLIE CAMPUS
CITY OF WYLIE
COLLIN COUNTY, TEXAS

COLLIN COUNTY COMMUNITY
COLLEGE DISTRICT
AGREED FINAL JUDGEMENT
NO. 005-02495-2017



**LOT 2, BLOCK A
WYLIE CIVIC CENTER
VOL. 2011, PAGE 58
P.R.C.C.T.**

COLLIN COUNTY COMMUNITY
COLLEGE DISTRICT
C.C. NO. 20161216001707960



LEGEND

C.M. = CONTROLLING MONUMENT
CIRF = CAPPED 1/2" IRON ROD
FOUND

SURDUKAN SURVEYING, INC.

P.O. BOX 126
ANNA, TEXAS 75409
(972) 924-8200
TEXAS FIRM NO. 10069500

EXHIBIT A
ONCOR ELECTRIC DELIVERY COMPANY, LLC
COLLIN COUNTY COMMUNITY
COLLEGE DISTRICT
WYLIE CAMPUS
CITY OF WYLIE
COLLIN COUNTY, TEXAS

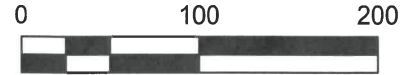
LINE TABLE

LINE	BEARING	DISTANCE
L1	S 00°31'07" E	268.18'
L2	S 01°03'53" W	231.65'
L3	S 88°56'07" E	16.20'
L4	S 04°53'33" E	15.08'
L5	N 88°56'07" W	17.76'
L6	S 01°03'53" W	122.29'
L7	S 64°37'46" E	35.15'
L8	S 04°53'33" E	8.12'
L9	S 01°26'24" E	19.86'
L10	S 79°38'30" W	34.43'
L11	S 01°03'53" W	12.45'
L12	S 88°56'07" E	34.59'
L13	S 01°26'24" E	15.01'
L14	N 88°56'07" W	35.24'
L15	S 01°03'53" W	79.42'
L16	S 00°29'41" E	215.60'
L17	S 88°43'42" E	30.01'
L18	S 00°29'41" E	7.83'
L19	S 04°02'24" W	7.18'
L20	N 88°43'42" W	30.04'
L21	S 04°02'24" W	156.54'
L22	S 29°21'00" W	166.32'
L23	S 34°34'45" W	313.18'
L24	S 35°00'28" W	74.81'
L25	S 54°59'32" E	30.00'
L26	S 35°00'28" W	15.00'
L27	N 54°59'32" W	30.00'
L28	S 35°00'28" W	411.41'
L29	S 35°44'04" E	31.95'
L30	S 32°49'41" W	16.11'
L31	N 35°44'04" W	32.23'
L32	S 32°49'41" W	167.05'
L33	S 18°47'44" E	38.27'
L34	S 32°49'41" W	32.20'
L35	S 31°50'10" W	51.18'
L36	N 18°47'44" W	58.53'
L37	N 32°49'41" E	247.31'
L38	N 35°00'28" E	34.56'
L39	N 54°59'32" W	20.00'
L40	N 35°00'28" E	50.00'
L41	S 54°59'32" E	20.00'
L42	N 35°00'28" E	423.73'
L43	N 34°34'45" E	312.44'
L44	N 29°21'00" E	165.31'
L45	N 04°02'24" E	161.98'
L46	S 01°03'53" W	33.73'
L46	N 00°29'41" W	222.78'
L47	N 01°03'53" E	33.73'
L48	N 90°00'00" W	338.77'
L49	S 00°00'00" W	98.30'
L50	N 89°49'41" E	5.00'
L51	S 00°00'00" E	20.00'
L52	N 90°00'00" W	20.00'
L53	N 00°00'00" W	20.00'

LINE	BEARING	DISTANCE
L54	S 89°56'34" E	5.00'
L55	N 00°00'00" W	98.29'
L56	N 90°00'00" W	42.79'
L57	S 00°00'00" E	10.00'
L58	N 90°00'00" W	20.00'
L59	N 00°00'00" W	10.00'
L60	N 90°00'00" W	569.78'
L61	S 00°00'00" E	5.03'
L62	N 90°00'00" W	10.00'
L63	S 00°00'00" W	96.75'
L64	S 11°00'00" W	398.31'
L65	S 78°39'26" E	112.75'
L66	N 11°00'00" E	5.00'
L67	S 79°00'00" E	20.00'
L68	S 11°00'00" W	20.00'
L69	N 79°00'00" W	20.00'
L70	N 11°00'00" E	5.00'
L71	N 78°39'25" W	122.75'
L72	N 11°00'00" E	407.29'
L73	N 00°00'00" W	95.79'
L74	N 90°00'00" W	10.00'
L75	N 00°00'00" W	5.00'
L76	N 90°00'00" W	242.51'
L77	S 86°21'42" W	42.92'
L78	S 00°00'00" E	5.28'
L79	N 90°00'00" W	20.00'
L80	N 00°00'00" W	20.00'
L81	N 90°00'00" E	20.00'
L82	S 00°00'00" E	4.70'
L83	N 86°21'42" E	42.61'
L84	N 90°00'00" E	242.83'
L85	N 00°00'00" W	5.00'
L86	N 90°00'00" E	30.00'
L87	S 00°00'00" E	4.94'
L88	N 90°00'00" W	318.97'
L89	N 00°00'00" W	17.19'
L90	N 90°00'00" W	5.00'
L91	N 00°00'00" W	20.00'
L92	N 90°00'00" E	20.00'
L93	S 00°00'00" E	20.00'
L94	N 90°00'00" W	5.00'
L95	S 00°00'00" E	17.19'
L96	N 90°00'00" E	240.81'
L97	N 00°00'00" W	10.00'
L98	N 90°00'00" E	20.00'
L99	S 00°00'00" E	10.00'
L100	N 90°00'00" E	381.75'
L101	N 01°03'53" E	212.52'
L102	N 88°56'07" W	10.00'
L103	N 01°03'53" E	60.00'
L104	S 88°56'07" E	20.00'
L105	N 01°03'53" E	208.94'
L106	N 00°31'07" W	268.21'
L107	S 89°37'44" E	15.00'



NORTH



LEGEND

C.M. = CONTROLLING MONUMENT
 CIRF = CAPPED 1/2" IRON ROD FOUND

BEARING BASIS:

The basis of bearings, horizontal and vertical position are derived from Texas WDS RTK Network, rotate to true north, Vertical position are referenced to NAVD88 using (GEI0D03).

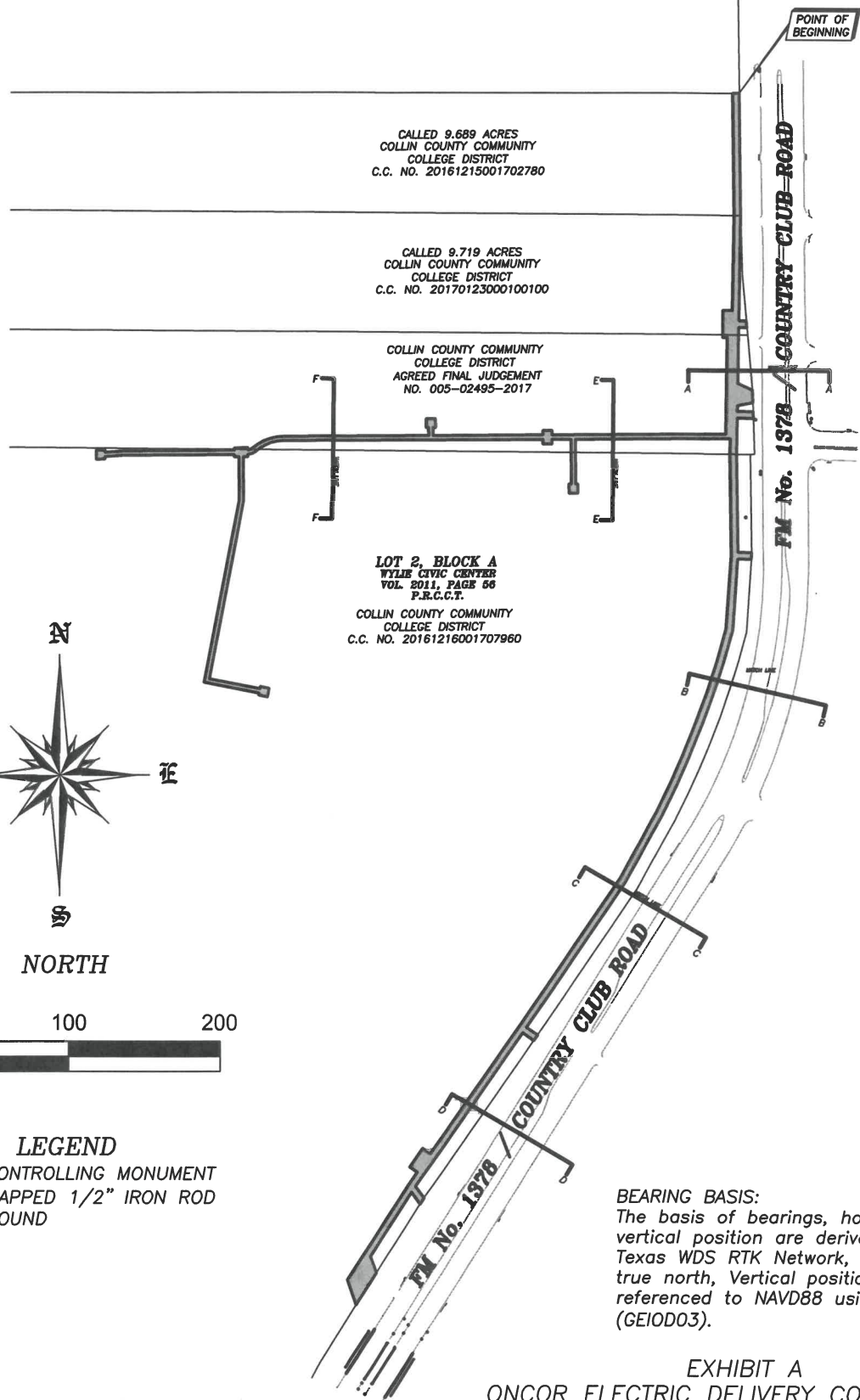
CURVE TABLE

CURVE	DELTA ANGLE	RADIUS	ARC LENGTH	CHORD BEARING	CHORD LENGTH
C1	12°06'11"	2073.89'	438.08'	S 20°49'50" W	437.27'
C2	12°03'17"	2058.89'	433.18'	N 20°50'45" E	432.38'
C3	41°24'35"	95.00'	68.66'	N 69°17'43" E	67.18'
C4	38°23'14"	25.00'	16.75'	S 67°47'02" W	16.44'
C5	36°22'06"	15.00'	9.52'	N 66°46'28" E	9.36'
C6	41°24'35"	105.00'	75.89'	N 69°17'43" E	74.25'

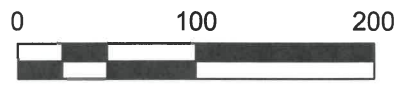
SURDUKAN SURVEYING, INC.

P.O. BOX 126
 ANNA, TEXAS 75409
 (972) 924-8200
 TEXAS FIRM NO. 10069500

EXHIBIT A
 ONCOR ELECTRIC DELIVERY COMPANY, LLC
 COLLIN COUNTY COMMUNITY
 COLLEGE DISTRICT
 WYLIE CAMPUS
 CITY OF WYLIE
 COLLIN COUNTY, TEXAS



NORTH



LEGEND

C.M. = CONTROLLING MONUMENT
CIRF = CAPPED 1/2" IRON ROD
FOUND

BEARING BASIS:
The basis of bearings, horizontal and vertical position are derived from Texas WDS RTK Network, rotate to true north, Vertical position are referenced to NAVD88 using (GEIOD03).

SURDUKAN SURVEYING, INC.
P.O. BOX 126
ANNA, TEXAS 75409
(972) 924-8200
TEXAS FIRM NO. 10069500

EXHIBIT A
ONCOR ELECTRIC DELIVERY COMPANY, LLC
COLLIN COUNTY COMMUNITY
COLLEGE DISTRICT
WYLIE CAMPUS
CITY OF WYLIE
COLLIN COUNTY, TEXAS