

# Artificial Intelligence in Duluth Public Schools

Greg Krueger, Jen Larva, and Cindy Miller

---

**Core Purpose:** To provide a **structured**, **ethical**, and **rigorous** framework for AI literacy integration in Duluth Public Schools



# BELIEFS



## 1. INCLUSIVE DIGITAL FUTURES

We believe in ensuring inclusive **digital futures**. AI literacy can reduce inequities and expand opportunities.



## 2. HUMAN-CENTERED APPROACH

We believe in a **human-centered approach** where AI is a tool to support the irreplaceable role of educators.



## 3. ETHICAL & SUSTAINNABLE AI

We commit to using only ethically responsible AI tools that are **safe, private, and environmentally sustainable**.





# Program Objectives and Goals



Empowering educators to utilize AI as a high-level classroom assistant.



Preparing secondary students with skills to navigate the "Age of AI."



Establishing a "Walled Garden" for safe, acceptable AI learning.



Acknowledging current student access and use of AI tools.

# Why & Importance



**Responsibility to build students' AI literacy**



**Preparation for college and career opportunities beyond ISD709**



**Equitable access to educational tools and information**



**AI is not perfect; students must be prepared to scrutinize information in the age of AI**



**Sustaining curiosity, confidence and thoughtful AI use across system**



# What is AI Literacy



**AI Literacy means knowing how to use AI tools effectively and ethically.**

- It isn't just a tech skill; it's a human superpower that **balances** understanding how the technology works with knowing how it impacts our world.

# ETHICAL LANGUAGE AND DIGITAL GUARDRAILS IN EDUCATION

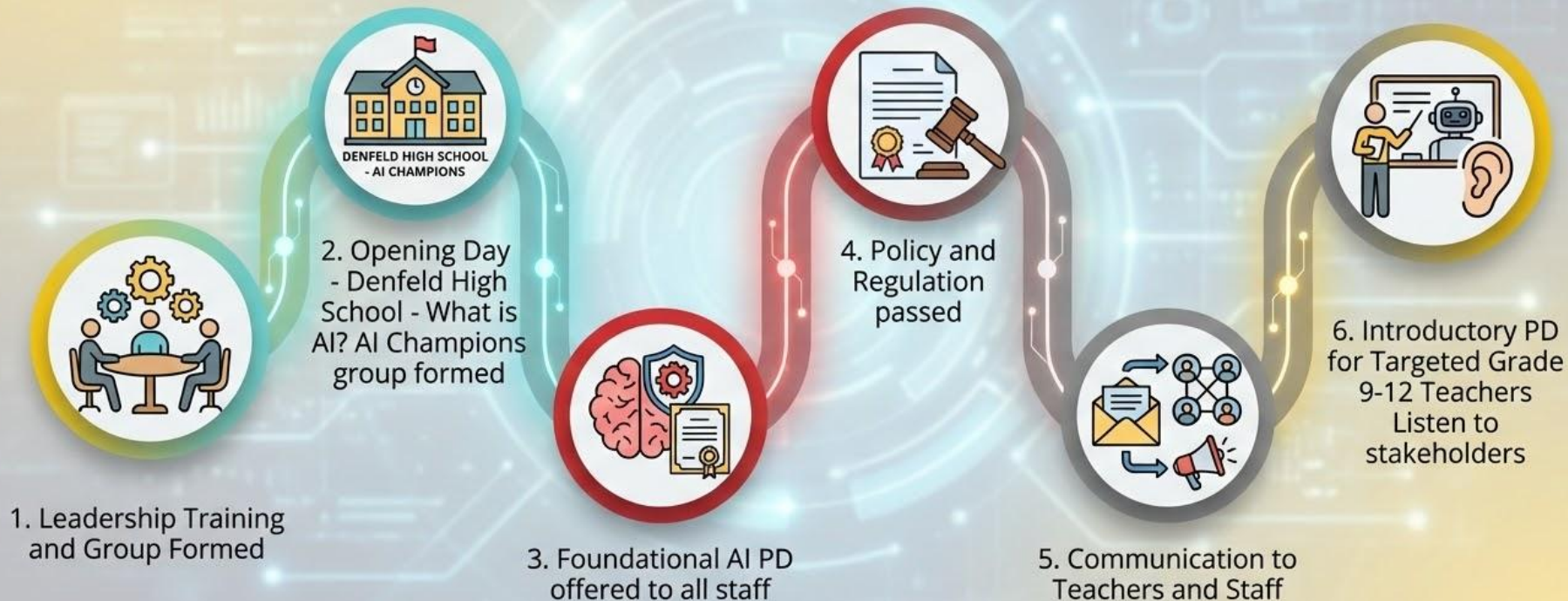


## Strategic Long-Term Vision

- Consistent ethical "Common Language" across departments.
- Alignment with state and university technology leaders.
- Robust governance through updated policies and digital guardrails.
- Compliance with student data privacy laws

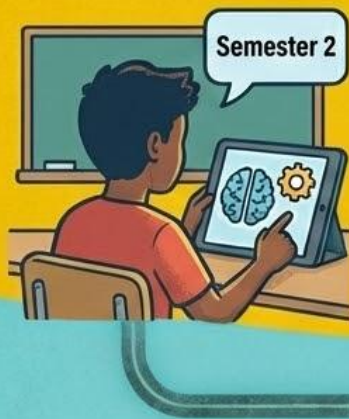
# Timeline

Phase 1: Spring - Fall 2025





# AI IMPLEMENTATION ROLLOUT & NEXT STEPS



**Student Readiness (Semester 2):** High school teachers in the target subject areas are currently delivering introductory AI lessons to ensure students understand responsible use before gaining tool access.



## Public Transparency

A dedicated Instructional Technology webpage—featuring a Parent/Community One-Pager and an AI FAQ—is scheduled for publication to ensure community clarity prior to student rollout.

**February 23, 2026**

## Student Launch:

The Technical Department is scheduled to grant Gemini access to all students in **grades 9-12 on February 23, 2026.**



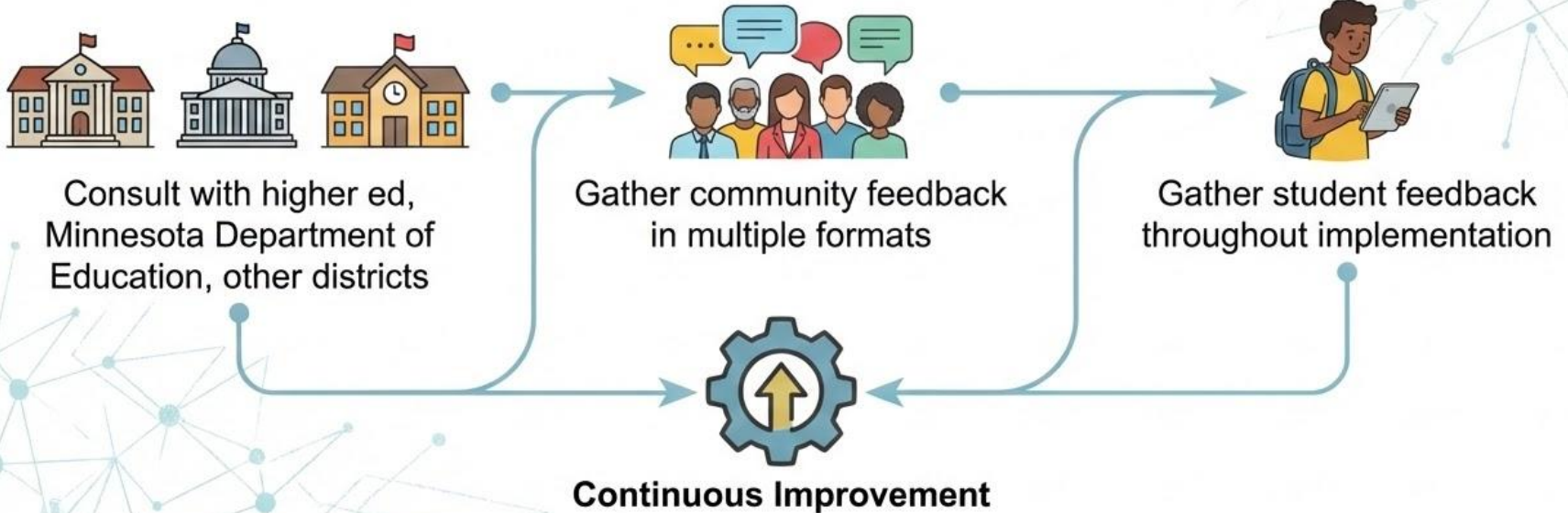
**March 2 PD Day**

**Instructional Integration:** Following the **March 2 PD Day**, secondary departments will begin formal implementation of the "Common Language" tool to guide students in ethical AI use for every assignment.



# Considering Stakeholder Input

In order to foster continuous improvement, we plan to:



Publish contact information for AI implementation leaders on district website

# Questions

Do you have any further questions for the team?



Google Gemini was used to enhance the appearance of these slides.



# Appendix: MSBA Resources

[Strategic Use of AI in Education](#) (Presentation)

[Artificial Intelligence, ChatGPT, and the Future of Education](#) (Article)