



UNITED INDEPENDENT SCHOOL DISTRICT INFORMATIONAL ITEM

TOPIC: Report on Status of Construction Project at Lyndon B. Johnson High School

SUBMITTED BY: Enrique Rangel *Enrique Rangel* **OF:** Facilities Department

APPROVED FOR TRANSMITTAL TO SCHOOL BOARD: _____

DATE ASSIGNED FOR BOARD CONSIDERATION: March 25, 2009

RECOMMENDATIONS:

See attachment "Status Report on Building Repairs at Lyndon B. Johnson High School" dated March 4, 2009.

Administration also recommends building a traffic safety loop and guard house to connect all parking lots and exit driveways to the North main entrance/exit (see attached traffic site plan).

Estimated Cost: \$259,000.00

Proposed Budget: FY 2009 Facilities Capital Improvements Projects

Proposed Schedule: Summer 2009

Status Report on Building Repairs at Lyndon B. Johnson High School

As of March 4, 2009

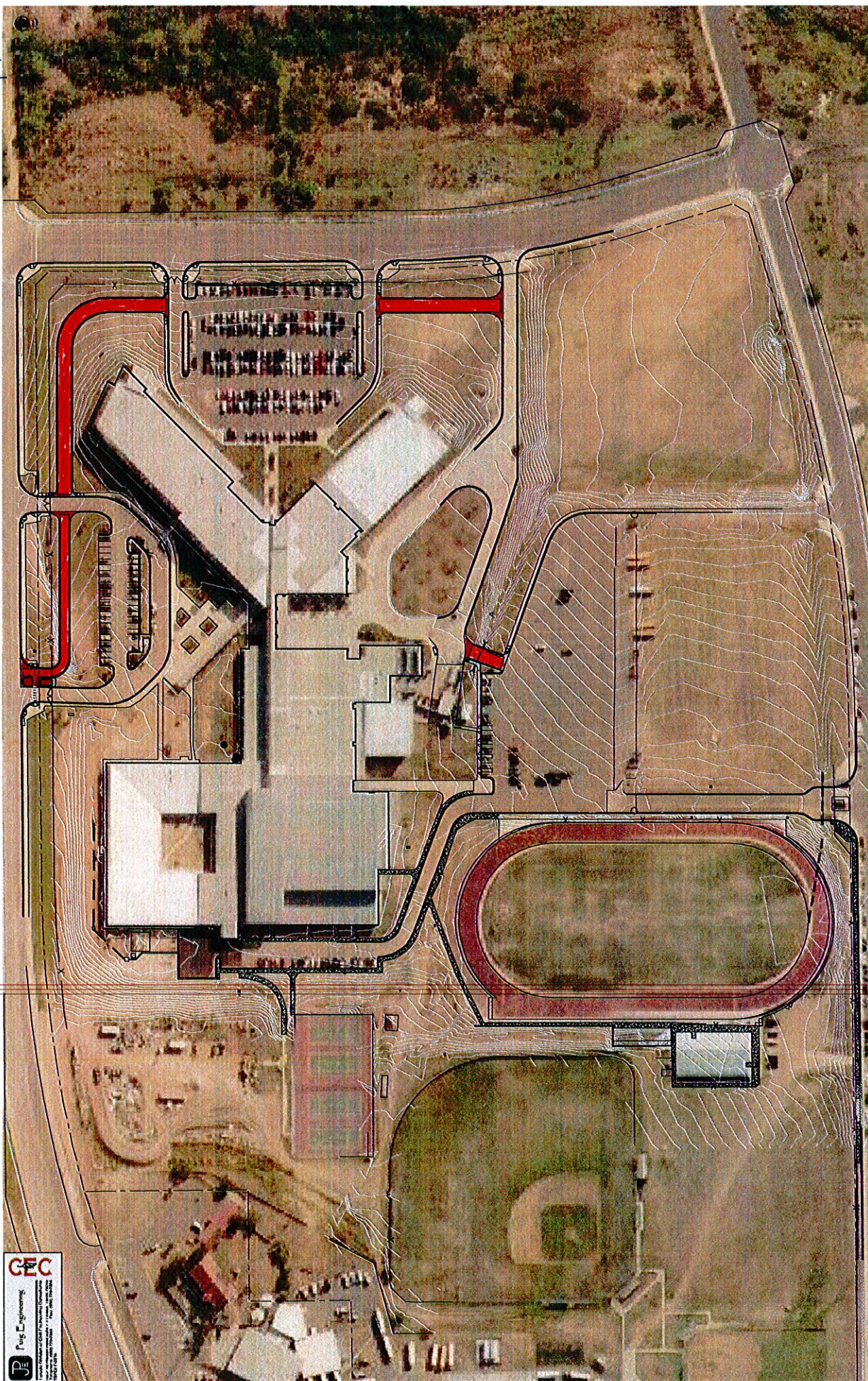
| Project Description | Cost | Budget Source | Status |
|---|-------------------------|--|---------------|
| 1. Roof/masonry Replacement / A&E Fees | \$1,636,000 | S&P Settlement Proceeds | 100% complete |
| 2. Air conditioning Repairs / A&E Fees | \$191,970 | S&P Settlement Proceeds | 100% complete |
| 3. Fire Alarm and Electrical Repairs | \$90,000 (Estimate) | S&P Settlement Proceeds | Pending Bids |
| 4. Drainage/Erosion Control Repairs | \$513,000 (Estimate) | S&P Settlement Proceeds | Pending Bids |
| 5. Proposed Traffic Safety Loop/Guard House | \$259,000 (Estimate) | FY'09 Facilities CIP budget | Pending Bids |
| Financial Summary: | | | |
| Total S&P Settlement Proceeds Budget: | \$2,481,700 | | |
| Total Expenditures to date: | \$1,875,270 | | |
| Remaining Balance to date: | \$606,430 | (To fund Items No. 3 and 4 listed above) | |
| Prepared by Facilities Dept. | | | |
| March 4, 2009 | | | |

PROJECT: LBJ High School Site Improvements

| ITEM | DESCRIPTION | QUANTITY | UNIT | UNIT PRICE | TOTAL |
|---|--------------------------------------|----------|------|------------|---------------------|
| NORTH ENTRANCE DRAINAGE IMPROVEMENTS | | | | | |
| 1 | 12" ADS N-12 Pipe | 250 | Lf. | \$18.50 | \$4,625.00 |
| 2 | 30" ADS N-12 Pipe | 350 | Lf. | \$38.50 | \$13,475.00 |
| 3 | 3' x 3' Drain Basin with Grate Inlet | 3 | Ea. | \$1,250.00 | \$3,750.00 |
| 4 | 4' x 4' Drain Basin with Grate Inlet | 3 | Ea. | \$1,650.00 | \$4,950.00 |
| 5 | 48" Junction Box | 1 | Ea. | \$1,450.00 | \$1,450.00 |
| 6 | 4" Rip Rap with 4x4 W.W.M. | 14,500 | Sf. | \$5.50 | \$79,750.00 |
| 7 | Site Grading | 2,500 | Cy. | \$12.50 | \$31,250.00 |
| 8 | 4' Railing | 260 | Lf. | \$30.00 | \$7,800.00 |
| Total North Drainage | | | | | \$147,050.00 |
| ACCESS ROADS ENTRANCES / EXITS | | | | | |
| 9 | Subgrade prep | 3,200 | Sy. | \$9.50 | \$30,400.00 |
| 10 | Caliche base | 3,200 | Sy. | \$13.00 | \$41,600.00 |
| 11 | 2" hot mix asphalt | 2,200 | Sy. | \$24.00 | \$52,800.00 |
| 12 | 6" Concrete driveway section | 2,350 | Sf. | \$11.50 | \$27,025.00 |
| 13 | Curb & gutter | 4,150 | Sf. | \$5.50 | \$22,825.00 |
| 14 | Striping | 1 | Ls. | \$750.00 | \$750.00 |
| 15 | Sidewalk | 400 | Sf. | \$6.50 | \$2,600.00 |
| 16 | ADA ramp | 9 | Ea. | \$1,850.00 | \$16,650.00 |
| 17 | Demolition | 1 | Ls. | \$4,500.00 | \$4,500.00 |
| Total North Drainage | | | | | \$194,650.00 |
| RETAINING WALLS / SOUTH ENTRANCE DRAINAGE IMPROVEMENTS | | | | | |
| 18 | Keystone Retaining walls 1.5' - 3' | 2,450 | Lf. | \$85.00 | \$208,250.00 |
| 19 | Site Grading | 4,500 | Cy. | \$12.50 | \$56,250.00 |
| 20 | 4" Rip Rap with 4x4 W.W.M. | 600 | Sf. | \$5.50 | \$3,300.00 |
| 21 | Valley gutter / flume | 1,300 | Sf. | \$5.00 | \$6,500.00 |
| 22 | Headwall structure | 1 | Ea. | \$2,500.00 | \$2,500.00 |
| Total Retaining Walls / South Drainage | | | | | \$276,800.00 |
| MISCELLANEOUS | | | | | |
| 23 | Mobilization | 1 | Ls. | \$5,500.00 | \$5,500.00 |
| 24 | SWPP | 1 | Ls. | \$3,000.00 | \$3,000.00 |
| Total Miscellaneous | | | | | \$8,500.00 |

Total Improvements \$627,000.00

15% Contingency \$721,050.00



PE Pruig Engineering
10000 S. 100th St., Suite 100, Overland Park, KS 66209
913.646.1100
www.pruigengineering.com

