

1920

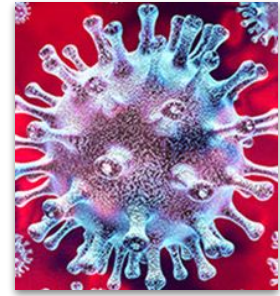


Shifting Learning Models During COVID-19

January 14, 2021

Shifting Learning Models During COVID-19

- Process Review
- Distance Learning-*Plus*
- Updates on New Mitigations
- Project KIDS, PALS (Partners Achieving Learning Success) and BYC (Burnsville Youth Collaborative)
- Transportation
- Food Service
- Activities and Athletics Update



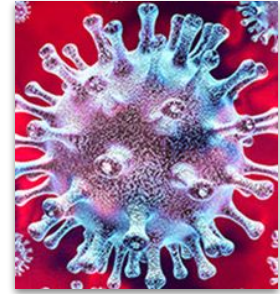
**Plan for
In-Person
Learning**



Elementary—Grades PreK-5

Shifting Learning Models During COVID-19

- Process development
 - Planning partners
 - Common language
- Return to hybrid and in-person learning
 - Reflections from shift to distance learning
 - Complexities of second move
- Next steps



**Plan for
In-Person
Learning**

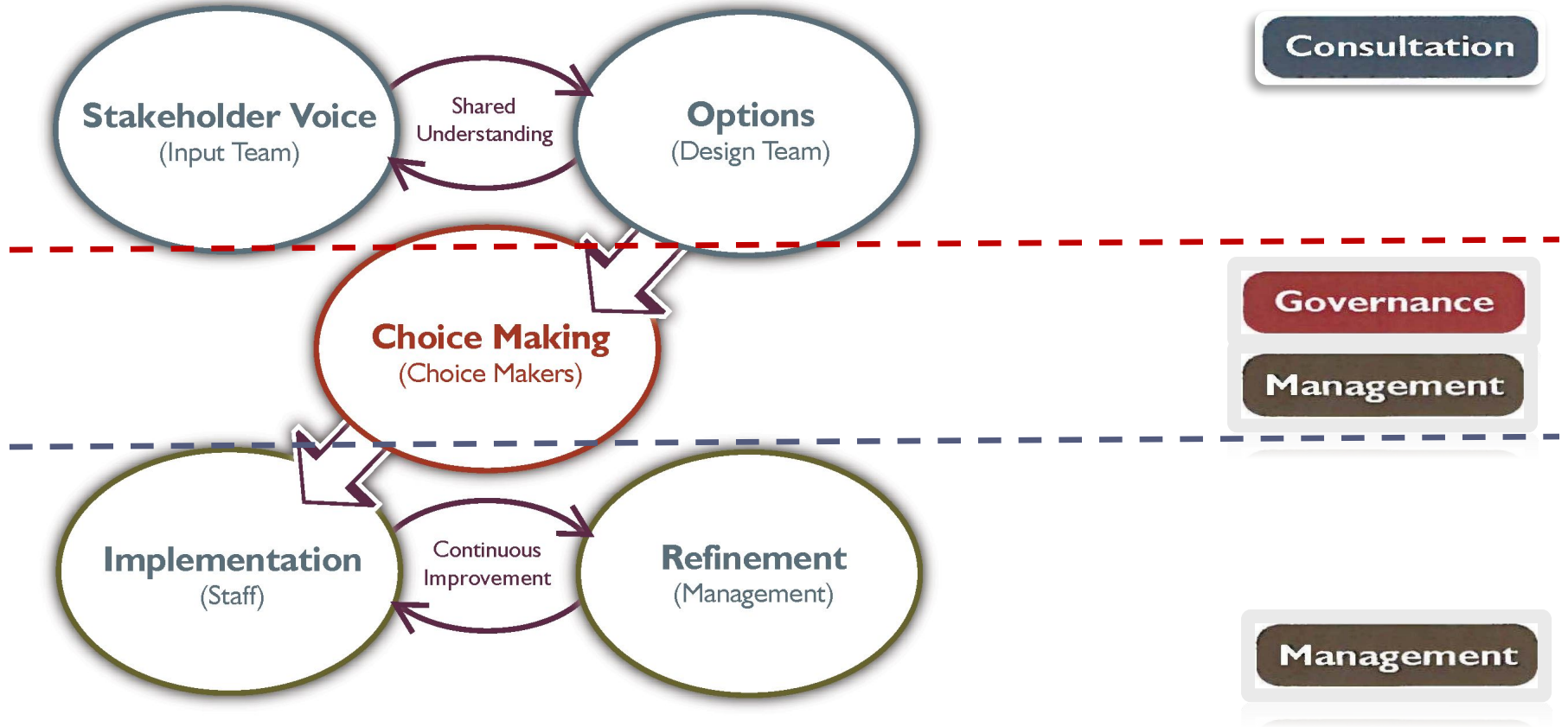


Elementary—Grades PreK-5

Decision Making Framework

Used For:

- Choice Making
- Managing Participant's Time and Roles
- Clarification of Authority



Partnership

- Fall implementation went well
 - Strategic start was well received
 - Team feedback from fall showed we could still make improvements
- Partner planning vs parallel planning
- Designed a process to improve partnerships and communication
 - Dave Lake and Imina Oftedahl supported process as “champions” to represent operations and instructional leadership respectively



Common Language - Airplane Flight Analogy

- **Preflight**

- All items we do immediately (prepare for flight)
- What can get done now, should get done now (plan for unexpected)

- **Inflight**

- Only those items that must wait
- Represent items done during “transition days”

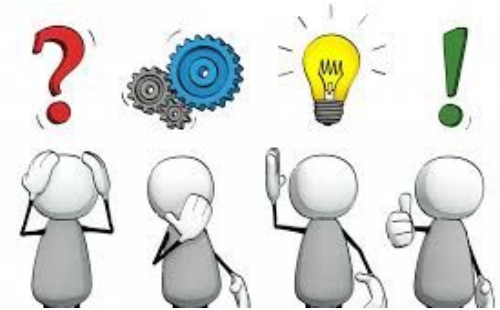
- **Postflight**

- Review and reflect on what went well and what needs to improve
- Start working to plan next flight



Shift to Distant Learning - Postflight Review

- A little over a month of planning
- Relatively smooth change
- Great feedback about our partnership, communication and general awareness
- Some reflections that this is a stressful time with anxiety, and acknowledging the need for leadership



Planning for Return to Hybrid / In-person

- Complicated return with steps from new semester
 - Enrollments
 - Master scheduling at Middle and High Schools
- Preflight, inflight, postflight similar process
- Identification of “Dependent Items” added to the preflight process
 - Dependent items are those tasks a person or department cannot complete until another person or departments completes a specified prerequisite task



Planning for Return to Hybrid / In-person

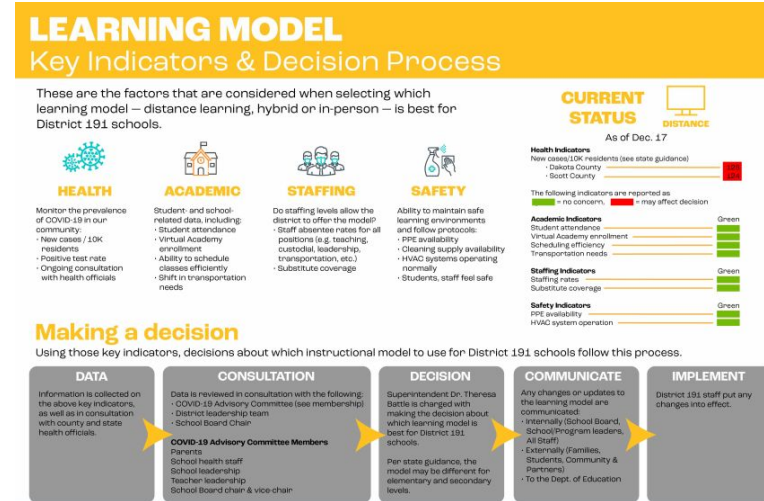
- Meetings began early December soon after the shift to distant learning
- Creation of preflight checklists, inflight checklists & dependent items
- Level of confidence in readiness



Middle Schools				
Item	Description of what needs to be done	Person(s) Responsible	Resource(s) or Partner(s) Needed	Comments
Families decide on model	Send out Family survey; set deadline and encourage families to meet deadline	Aaron and Principals	Communications	
ID students moving between models	Monitor results of survey to identify students moving between models	MS Principals; clerical	Access to survey results	
Determine number of VA students	Monitor results of survey to identify number of students in VA for semester 2	MS Principals; clerical	Access to survey results	
Determine number of hybrid students	Monitor results of survey to identify number of students in hybrid for semester 2	MS Principals; clerical	Access to survey results	

Process Next steps

- Postflight review after the shift
- Prepare Middle and High Schools for future shifts to full in-person or distant learning
- Monitor health and safety practices
- Continued communication



Distance Learning-*Plus* Update

- Consideration to bring students with intensive and/or target service needs, back into the buildings
- Earliest would be January 19, but likely around February 1
- Health and safety top priority
- Beginning with students who are experiencing significant challenges during distance learning



Updates on New Mitigations

- Saliva Testing for Staff
 - Every other Monday
- COVID-19 Vaccines
 - Dakota and Scott County Public Health

Project KIDS / PALS / BYC

Project KIDS:

OPEN: Wednesday, January 27 Kindergarten-Grade 5 (K-5), at Marion W. Savage Elementary and Sioux Trail Elementary.

CLOSED: Thursday, January 28 & Friday, January 29.

Beginning February 1 until end of school year:

Project KIDS will provide care for K-2 grades and will be open at each elementary school for both before and after school care.

February 1-12

Project KIDS will provide care for grades 3-5 at either Marion W. Savage Elementary or Sioux Trail Elementary , with times to be determined.

February 15 until end of school year. All grades K-5 at the elementary buildings before and after school.

Summer Project KIDS program dates are June 16 - August 27

PALS and BYC

After-school Alternative Learning Center (ALC) programs are designed for students currently in grades K-8 and focus on reading, writing, and math development through scientific discovery.

K-5 PALS program runs January 5–May 5 on Tuesdays and Wednesdays, time to be determined. Grades 6-8 BYC program runs January 5–May 5 on Tuesdays and Wednesdays, time to be determined. Classes are virtual, with synchronous instruction delivered by licensed teachers through Google Meet.

Currently, 351 students are enrolled in PALS and BYC programming.

Transportation

- Received great feedback from families
- Increased bus capacities:
 - Full size bus (25-47)
 - Type-A bus (6-12)
- Routes are being created by:
 - In-person learning numbers
 - Maximizing bus fleet
- Prioritizing health and safety
 - Face masks, ventilation, cleaning and disinfecting
 - Assigned seats and attendance taken



Food Service

- Free meals continue for children ages 1-18
- Weekly curbside meal pick-up at Eagle Ridge Middle School, Nicollet Middle School, and Sioux Trail Elementary on Wednesdays 11:00am-12:30pm for distance learners
- Home delivered meals continue for those with medical or transportation needs



Athletics and Activities Updates

- Returned to practices on January 4
- Continue to monitor COVID data and Minnesota Department of Education (MDE)/Minnesota Department of Health (MDH) guidance
- Data reviewed by Athletics and Activities COVID Response Team
- Will set dials based on team recommendation



