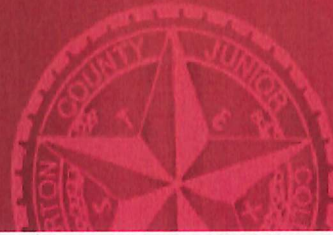




*Wharton County
Junior College*



Monthly Financial Reports

January 2025



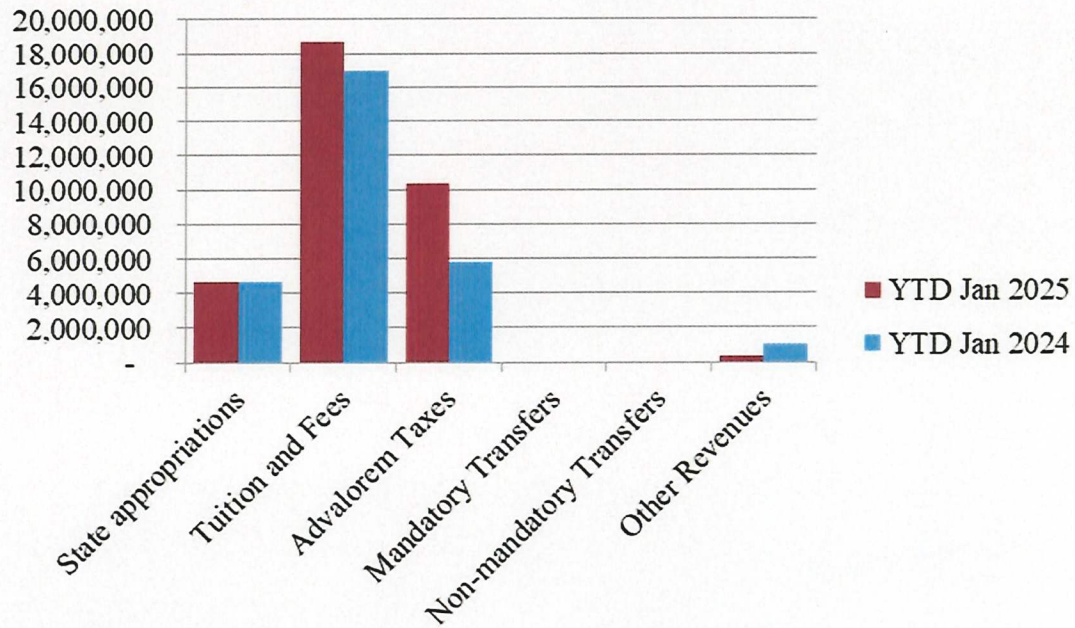
Revenue & Expenditure Summary

	FISCAL 2025				FISCAL 2024			% OF PRIOR YR ACTUAL
	Current Month	Y-T-D ACTUAL	Budget	% of Budget	Y-T-D ACTUAL	Budget	% of Budget	
Fund 1000								
Revenues:								
State appropriations	\$ -	\$ 4,652,628	\$ 9,305,255	50.00%	\$ 4,652,628	\$ 9,305,255	50.00%	100%
Tuition and Fees	1,908,666	18,728,265	22,613,331	82.82%	16,997,443	20,749,657	81.92%	110%
Advalorem Taxes	6,279,555	10,313,487	12,147,842	84.90%	5,750,512	9,976,525	57.64%	179%
Mandatory Transfers	-	-	1,201,254	0.00%	-	956,147	0.00%	0%
Non-mandatory Transfers	-	-	1,718,416	0.00%	-	2,434,200	0.00%	0%
Other Revenues	67,074	378,160	603,607	62.65%	1,064,353	1,017,633	104.59%	36%
Total Revenues	8,255,294	34,072,539	47,589,705	71.60%	28,464,936	44,439,417	64.05%	120%
Expenditures:								
Salaries	1,653,921	8,904,913	24,236,885	36.74%	8,635,202	22,846,493	37.80%	103%
Employee Benefits	366,349	1,916,606	6,249,056	30.67%	1,884,743	6,148,161	30.66%	102%
Capital Expenditures	254,548	364,996	2,981,565	12.24%	628,908	2,527,802	24.88%	58%
Mandatory Transfers	-	-	-	-	-	-	-	0%
Non-mandatory Transfers	-	-	-	-	-	-	-	0%
Other Expenditures	897,035	5,798,959	14,122,199	41.06%	4,504,997	12,916,961	34.88%	129%
Total expenditures	3,171,852	16,985,474	47,589,705	35.69%	15,653,850	44,439,417	35.23%	109%
Net increase/ (decrease) in net assets	\$ 5,083,442	\$ 17,087,065			\$ 12,811,086			
Less Outstanding encumbrances		(3,550,906)			(3,907,277)			
Net increase less encumbrances		\$ 13,536,159			\$ 8,903,809			

* Note: Net student receivables in the amount of \$ 5,297,759.93 are currently outstanding. Tuition and fees are subject to collection in future periods.

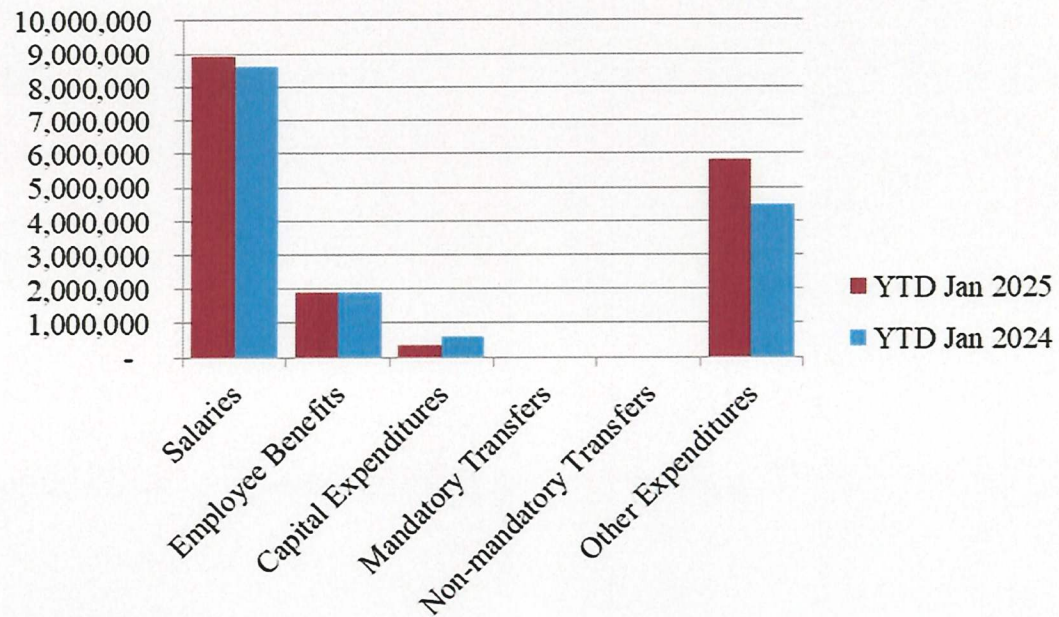


Year to Date Revenues



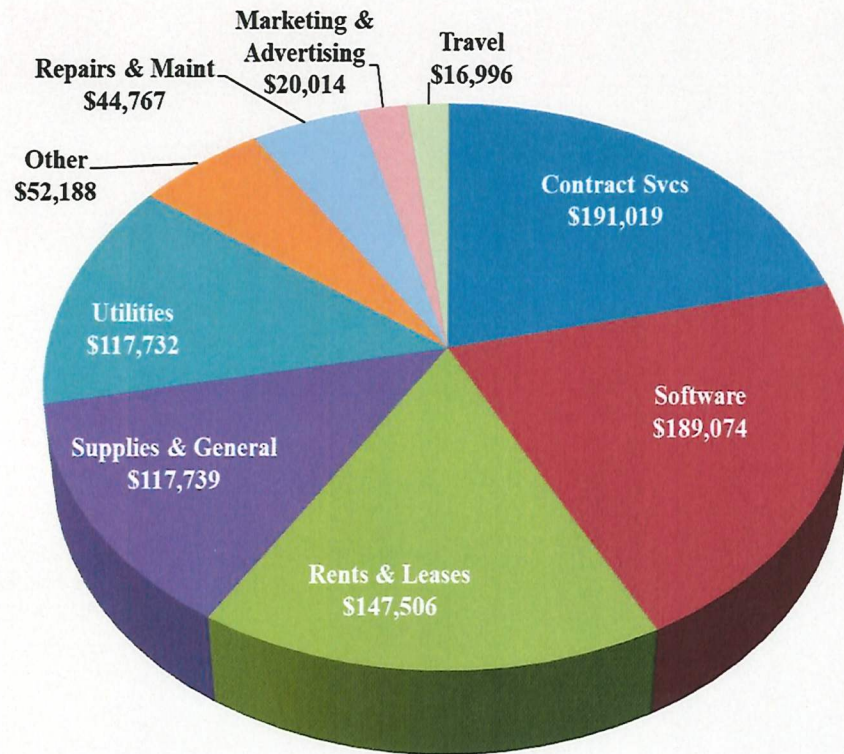


Year to Date Expenses

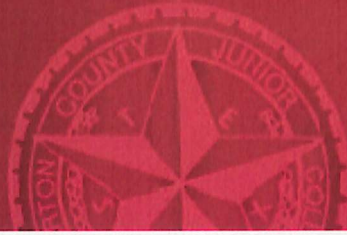




Other Expenses for January



- Contract Services includes 127K for Banner Saas implementation
- Software expense includes \$84k for Touchnet payment gateway

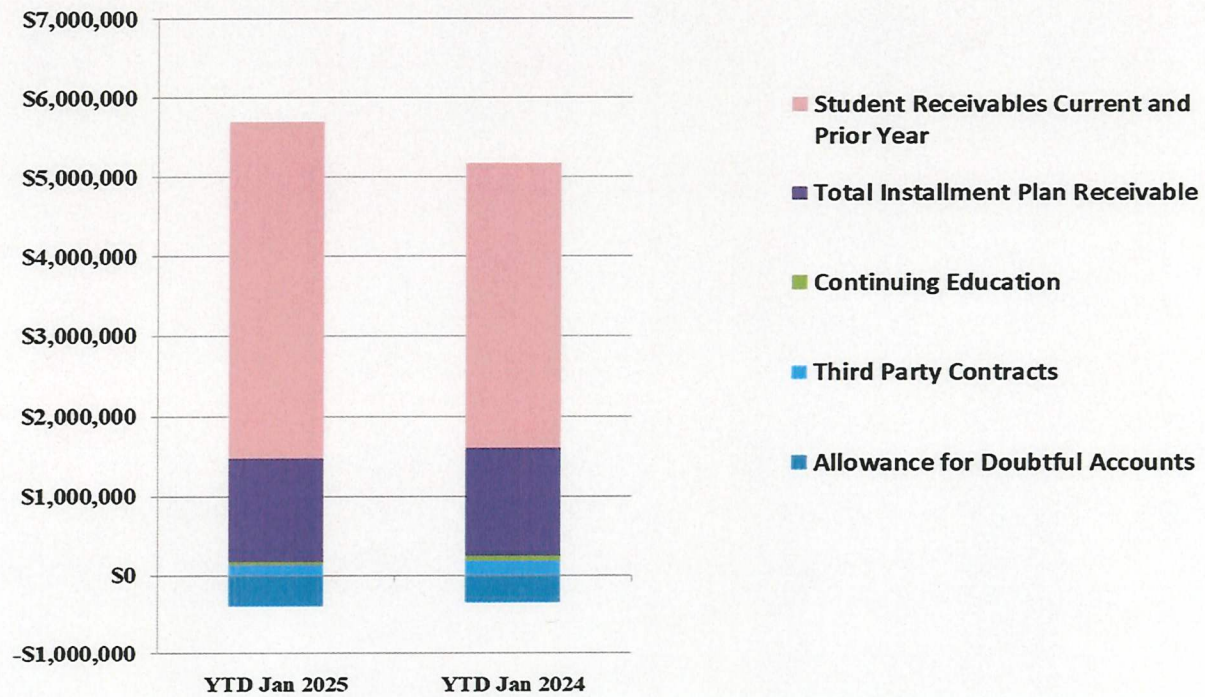


Analysis of Student Receivable Outstanding As of January 31, 2025

	2025	2024
Student Receivables Current and Prior Yr.	\$ 4,222,153.24	\$ 3,559,363.51
Installment Plan Receivable Due Fall Semester	\$ 95,828.67	\$ 98,282.64
Installment Plan Receivable Due Spring Semester	1,097,278.73	1,146,182.27
Installment Plan Receivable Summer I & II	0.00	0.00
Installment Plan Receivable Prior Years	107,186.53	122,920.46
Total Installment Plan Receivable	<u>\$ 1,300,293.93</u>	<u>\$ 1,367,385.37</u>
Third Party Contracts Receivable	\$ 131,488.85	\$ 175,637.16
Continuing Education Receivable	41,914.00	68,242.44
Allowance for Doubtful Accounts	(398,090.09)	(351,677.20)
Net Accounts Receivable	<u>\$ 5,297,759.93</u>	<u>\$ 4,818,951.28</u>



AR by Category



COMBINED BALANCE SHEET

(Funds included: GOVERNMENTAL FUND TYPES)

Governmental Fund Types

	Auxiliary Enterprise	Current Unrestricted	Restricted Funds	Current Year 2025	Prior Year 2024
ASSETS and OTHER DEBITS:					
ASSETS:					
Cash	165,534	2,183,717	602,769	2,952,020	5,791,251
Cash Investments	726,278	25,134,745	1,069,365	26,930,388	23,051,131
Accounts Receivable	283,061	5,330,288	5,681	5,619,030	5,156,183
Taxes Receivable		4,977,840	--	4,977,840	645,743
Local, St & Fed Agency Receivable		--	355,720	355,720	453,904
Deposits		--	--	--	--
Due From Other Funds	137	300,000	46,801	346,938	867,281
Prepaid Expense		2,656	--	2,656	5,382
Property, Plant & Equipment		--	--	--	--
Deferred Outflows		7,616,786	--	7,616,786	7,616,786
TOTAL ASSETS AND OTHER DEBITS:	1,175,009	45,546,033	2,080,336	48,801,378	43,587,661
Liabilities, equity and other credits					
LIABILITIES:					
Accounts Payable	29,958	430,533	34,476	494,967	190,790
Employee Benefits Payable	615	315,699	--	316,314	293,931
Payroll Taxes Payable		-5,548	--	-5,548	-5,682
Accrued Liabilities		--	--	--	--
Deferred Revenue		28,000	460,413	488,413	541,074
Long Term Debt		--	--	--	--
Net Pension Liability		9,751,478	--	9,751,478	9,751,478
Net OPEB Liability		23,642,817	--	23,642,817	23,642,817
Lease/SBITA Liab - Long Term		--	--	--	--
Deposits Payable	67,317	11,878	--	79,195	77,645
Due To Other Funds		47,075	300,000	347,075	601,434
Scholarships-Designated Donations		--	-33,767	-33,767	36,555
Scholarships-Non-designated		--	626,694	626,694	1,201,824
Donatio					
Deferred Inflows		11,847,738	--	11,847,738	11,847,738
TOTAL LIABILITIES:	97,889	46,069,670	1,387,816	47,555,375	48,179,605
EQUITY AND OTHER CREDITS:					
Control Accounts		--	--	--	--
Fund Balances		--	--	--	--
Prior Year Fund Balance		-18,853,512	--	-18,853,512	-19,313,888
Endowment Fund-Original		--	--	--	--
Endowment Fund-Income		--	--	--	--
FB Professional Development		--	--	--	--
FB Salary Equity		--	--	--	--
FB Capital Equipment		--	--	--	--
FB Investment Gain And Loss		--	--	--	--
Fund Balance Receivables		--	--	--	--
Reserved-Undesignated		--	--	--	--
FBTC Operating Fund Balance		--	--	--	--
Plant Fund Balance		--	--	--	--
Bond Fund Balance		--	--	--	--
Scholarship		--	--	--	--
Fund Balance-Rounding Diff		--	--	--	--
Fund Balances:					
Reserve for Encumbrance	31,266	3,550,906	349,359	3,931,531	4,358,963
Fund Balance	1,045,854	14,778,969	343,161	16,167,984	10,362,982
Reserve For Operations		--	--	--	--
TOTAL EQUITY AND OTHER CREDITS:	1,077,120	-523,637	692,520	1,246,002	-4,591,944
TOTAL LIABILITIES, EQUITY AND OTHER CREDITS:	1,175,009	45,546,033	2,080,336	48,801,378	43,587,661

Proprietary Fund Types

	Agency Funds	Current Year 2025	Prior Year 2024
ASSETS and OTHER DEBITS:			
ASSETS:			
Cash	88,532	88,532	76,856
Cash Investments	179,501	179,501	170,608
Accounts Receivable	-	-	-
Taxes Receivable			
Local, St & Fed Agency Receivable			
Deposits			
Due From Other Funds	137	137	2,854
Prepaid Expense			
Property, Plant & Equipment			
Deferred Outflows			
TOTAL ASSETS AND OTHER DEBITS:	268,170	268,170	250,319
Liabilities, equity and other credits			
LIABILITIES:			
Accounts Payable			
Employee Benefits Payable	-	-	-
Payroll Taxes Payable			
Accrued Liabilities			
Deferred Revenue			
Long Term Debt			
Net Pension Liability			
Net OPEB Liability			
Lease/SBITA Liab - Long Term			
Deposits Payable	264,495	264,495	255,844
Due To Other Funds			
Scholarships-Designated Donations			
Scholarships-Non-designated			
Donatio			
Deferred Inflows			
TOTAL LIABILITIES:	264,495	264,495	255,844
EQUITY AND OTHER CREDITS:			
Control Accounts	3,675	3,675	-5,526
Fund Balances			
Prior Year Fund Balance			
Endowment Fund-Original			
Endowment Fund-Income			
FB Professional Development			
FB Salary Equity			
FB Capital Equipment			
FB Investment Gain And Loss			
Fund Balance Receivables			
Reserved-Undesignated			
FBTC Operating Fund Balance			
Plant Fund Balance			
Bond Fund Balance			
Scholarship			
Fund Balance-Rounding Diff			
Fund Balances:			
Reserve for Encumbrance			
Fund Balance			
Reserve For Operations			
TOTAL EQUITY AND OTHER CREDITS:	3,675	3,675	-5,526
TOTAL LIABILITIES, EQUITY AND OTHER CREDITS:	268,170	268,170	250,319

Fiduciary Fund Types

	Endowment Funds	Quasi Endowment Fund	Current Year 2025	Prior Year 2024
ASSETS and OTHER DEBITS:				
ASSETS:				
Cash	328,813	--	328,813	276,813
Cash Investments	14,862,113	--	14,862,113	12,388,890
Accounts Receivable	9,160	--	9,160	2,194
Taxes Receivable		--		
Local, St & Fed Agency Receivable		--		
Deposits		--		
Due From Other Funds		--		
Prepaid Expense		--		
Property, Plant & Equipment		--		
Deferred Outflows		--		
TOTAL ASSETS AND OTHER DEBITS:	15,200,085		15,200,085	12,667,896
Liabilities, equity and other credits				
LIABILITIES:				
Accounts Payable		--		
Employee Benefits Payable		--		
Payroll Taxes Payable		--		
Accrued Liabilities		--		
Deferred Revenue		--		
Long Term Debt		--		
Net Pension Liability		--		
Net OPEB Liability		--		
Lease/SBITA Liab - Long Term		--		
Deposits Payable		--		
Due To Other Funds		--		237,527
Scholarships-Designated Donations		--		
Scholarships-Non-designated		--		
Donatio		--		
Deferred Inflows		--		
TOTAL LIABILITIES:				237,527
EQUITY AND OTHER CREDITS:				
Control Accounts		--		
Fund Balances		--		
Prior Year Fund Balance		--		
Endowment Fund-Original		--		
Endowment Fund-Income		--		
FB Professional Development		--		
FB Salary Equity		--		
FB Capital Equipment		--		
FB Investment Gain And Loss		--		
Fund Balance Receivables		--		
Reserved-Undesignated		--		
FBTC Operating Fund Balance		--		
Plant Fund Balance		--		
Bond Fund Balance		--		
Scholarship		--		
Fund Balance-Rounding Diff		--		
Fund Balances:		--		
Reserve for Encumbrance		--		
Fund Balance	15,200,085	--	15,200,085	12,430,369
Reserve For Operations		--		
TOTAL EQUITY AND OTHER CREDITS:	15,200,085		15,200,085	12,430,369
TOTAL LIABILITIES, EQUITY AND OTHER CREDITS:	15,200,085		15,200,085	12,667,896

Wharton County Junior College
 Combined Balance Sheet--All Fund Types and Account Groups
 31-JAN-2025
 (With comparative totals for 31-JAN-2024)
 (amounts expressed in dollars)

Account Groups

	Investment in Plant Fund	Debt Retirement Bond Fund	Repair and Replacement	Unexpended Plant Fund	Current Year 2025	Prior Year 2024
ASSETS and OTHER DEBITS:						
ASSETS:						
Cash		240	7,444,018	-7,269,778	174,480	116,129
Cash Investments		434,296	--	10,440,251	10,874,546	11,763,226
Accounts Receivable		--	--	4,526	4,526	4,587
Taxes Receivable		--	--	--	--	--
Local, St & Fed Agency Receivable		--	--	--	--	--
Deposits		--	--	--	--	--
Due From Other Funds		--	--	--	--	--
Prepaid Expense		--	--	--	--	-55,897
Property, Plant & Equipment	49,375,587	--	--	--	49,375,587	45,235,541
Deferred Outflows		--	--	--	--	--
TOTAL ASSETS AND OTHER DEBITS:	49,375,587	434,535	7,444,018	3,174,999	60,429,139	57,063,586
Liabilities, equity and other credits						
LIABILITIES:						
Accounts Payable		--	--	--	--	--
Employee Benefits Payable		--	--	--	--	--
Payroll Taxes Payable		--	--	--	--	--
Accrued Liabilities	2,579,576	--	--	--	2,579,576	2,579,576
Deferred Revenue		--	--	--	--	--
Long Term Debt		--	--	--	--	--
Net Pension Liability		--	--	--	--	--
Net OPEB Liability		--	--	--	--	--
Lease/SHITA Liab - Long Term	7,550,278	--	--	--	7,550,278	7,550,278
Deposits Payable		--	--	--	--	--
Due To Other Funds		--	--	--	--	31,174
Scholarships-Designated Donations		--	--	--	--	--
Scholarships-Non-designated		--	--	--	--	--
Donatio		--	--	--	--	--
Deferred Inflows		--	--	--	--	--
TOTAL LIABILITIES:	10,129,853				10,129,853	10,161,027
EQUITY AND OTHER CREDITS:						
Control Accounts		--	--	--	--	--
Fund Balances		--	--	--	--	--
Prior Year Fund Balance		--	--	--	--	--
Endowment Fund-Original		--	--	--	--	--
Endowment Fund-Income		--	--	--	--	--
FB Professional Development		--	--	--	--	--
FB Salary Equity		--	--	--	--	--
FB Capital Equipment	43,865,079	--	--	--	43,865,079	39,639,187
FB Investment Gain And Loss		--	--	--	--	--
Fund Balance Receivables		--	--	--	--	--
Reserved-Undesignated		--	--	--	--	--
FBTC Operating Fund Balance		--	--	--	--	--
Plant Fund Balance		--	--	--	--	--
Bond Fund Balance		--	--	--	--	--
Scholarship		--	--	--	--	--
Fund Balance-Rounding Diff		--	--	--	--	--
Fund Balances:		--	--	--	--	--
Reserve for Encumbrance		--	--	--	--	--
Fund Balance	-2,871,875	434,535	6,759,801	2,111,746	6,434,207	7,268,526
Reserve For Operations		--	--	--	--	--
TOTAL EQUITY AND OTHER CREDITS:	40,993,204	434,535	6,759,801	2,111,746	50,299,286	46,907,713
TOTAL LIABILITIES, EQUITY AND OTHER CREDITS:	51,123,058	434,535	6,759,801	2,111,746	60,429,139	57,068,741

Wharton County Junior College
 Combined Balance Sheet--All Fund Types and Account Groups
 31-JAN-2025
 (With comparative totals for 31-JAN-2024)
 (amounts expressed in dollars)

Memorandum Only

	Current Year 2025	Prior Year 2024
ASSETS and OTHER DEBITS:		
ASSETS:		
Cash	3,543,845	6,261,049
Cash Investments	52,846,548	47,373,854
Accounts Receivable	5,632,715	5,162,964
Taxes Receivable	4,977,840	645,743
Local, St & Fed Agency Receivable	355,720	453,904
Deposits		
Due From Other Funds	347,075	870,135
Prepaid Expense	2,656	-50,515
Property, Plant & Equipment	49,375,587	45,235,541
Deferred Outflows	7,616,786	7,616,786
TOTAL ASSETS AND OTHER DEBITS:	124,698,772	113,569,462
Liabilities, equity and other credits		
LIABILITIES:		
Accounts Payable	494,967	190,790
Employee Benefits Payable	316,314	293,931
Payroll Taxes Payable	-5,548	-5,682
Accrued Liabilities	2,579,576	2,579,576
Deferred Revenue	488,413	541,074
Long Term Debt		
Net Pension Liability	9,751,478	9,751,478
Net OPEB Liability	23,642,817	23,642,817
Lease/SBITA Liab - Long Term	7,550,278	7,550,278
Deposits Payable	343,689	333,489
Due To Other Funds	347,075	870,135
Scholarships-Designated Donations	-33,767	36,555
Scholarships-Non-designated	626,694	1,201,824
Donatio		
Deferred Inflows	11,847,738	11,847,738
TOTAL LIABILITIES:	57,949,723	58,834,004
EQUITY AND OTHER CREDITS:		
Control Accounts	3,675	-5,526
Fund Balances		
Prior Year Fund Balance	-18,853,512	-19,313,888
Endowment Fund-Original		
Endowment Fund-Income		
FB Professional Development		
FB Salary Equity		
FB Capital Equipment	43,865,079	39,639,187
FB Investment Gain And Loss		
Fund Balance Receivables	-	-
Reserved-Undesignated		
FBTC Operating Fund Balance		
Plant Fund Balance		
Bond Fund Balance		
Scholarship		
Fund Balance-Rounding Diff	-	-
Fund Balances:		
Reserve for Encumbrance	3,931,531	4,358,963
Fund Balance	37,802,276	30,061,877
Reserve For Operations		
TOTAL EQUITY AND OTHER CREDITS:	66,749,048	54,740,613
TOTAL LIABILITIES, EQUITY AND OTHER CREDITS:	124,698,772	113,574,617