

**June 2015**

Derby Public Schools

# Performance Dashboard

---

## Bradley School

Mario Ciccarini, Principal

*“People without information cannot act. People with information cannot help but act.”*

*Ken Blanchard*



## Promotion:

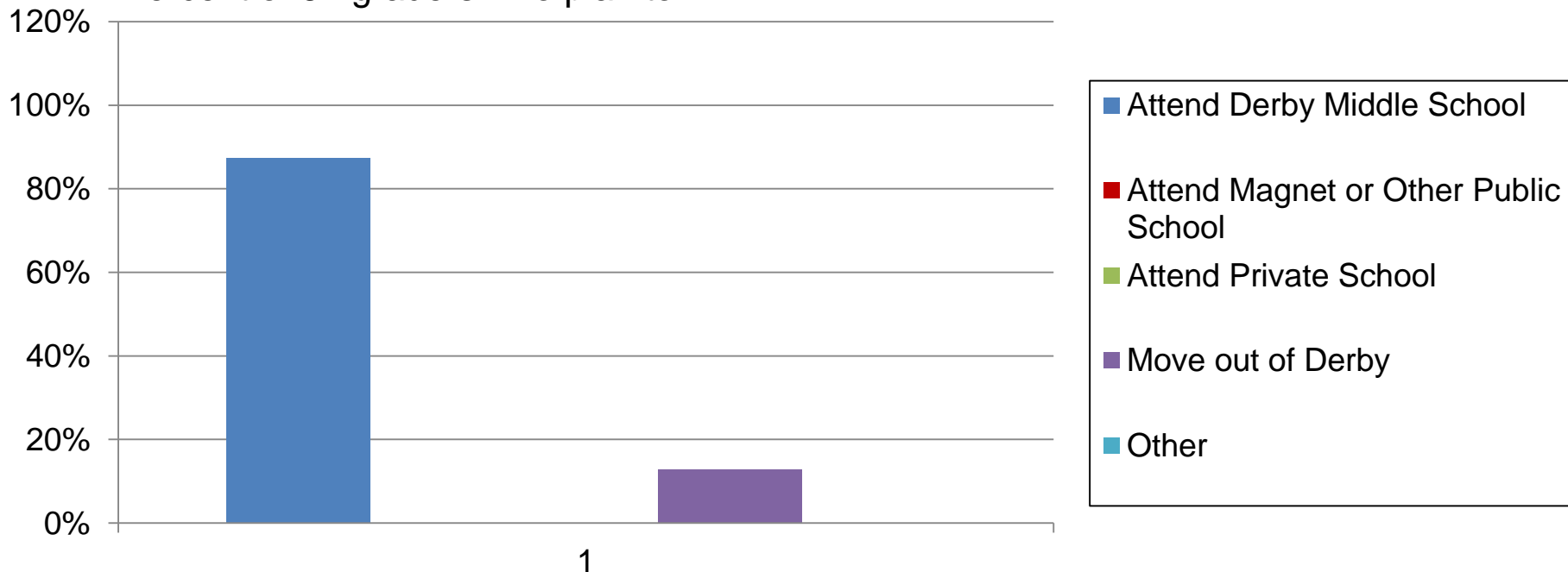
Percent of students promoted

Bradley School

	K	1	2	3	4	5
<b>June, 2015</b>	100%	97%	100%	100%	100%	100%
<b>June, 2014</b>	100%	100%	98%	100%	100%	100%
<b>June, 2013</b>	92%	98%	97%	98%	100%	100%
<b>June, 2012</b>	94%	98%	100%	98%	100%	100%
<b>June, 2011</b>	99%	100%	100%	100%	100%	100%
<b>June, 2010</b>	99%	100%	100%	100%	100%	100%

## Departing 5<sup>th</sup> Grader Plans

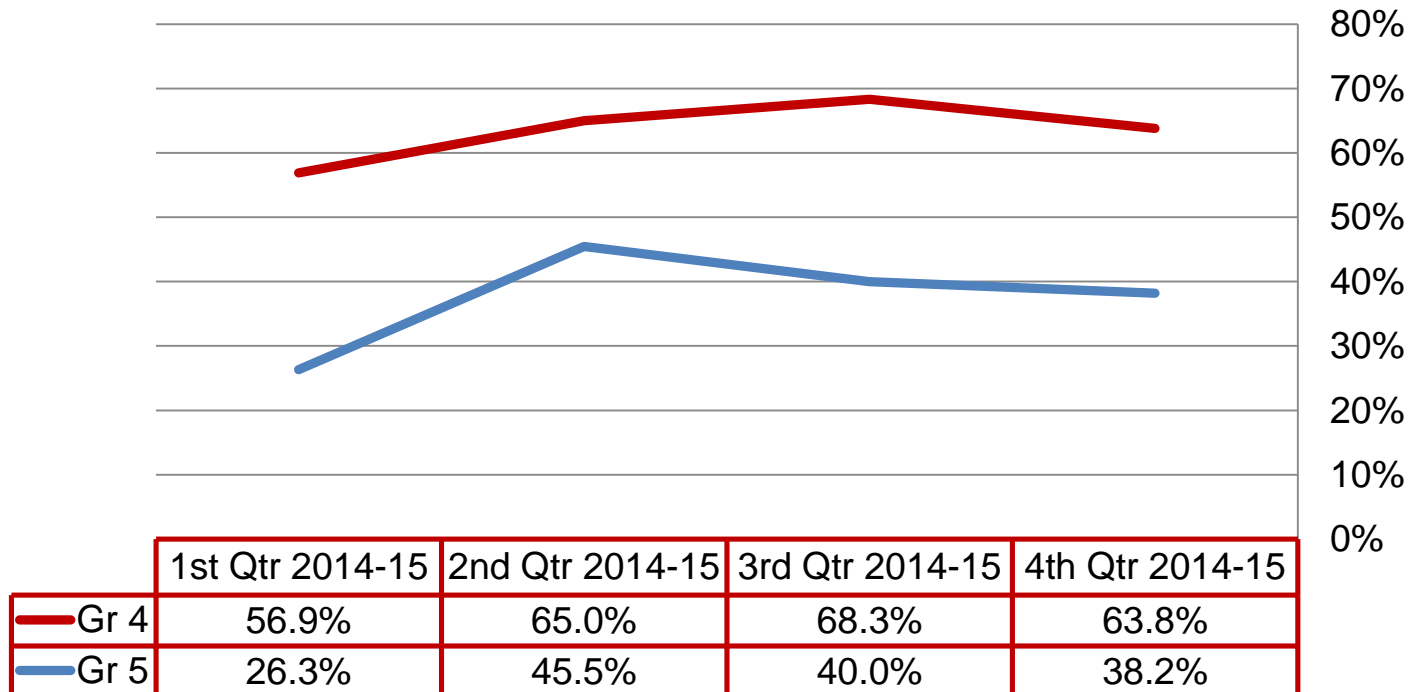
Percent of 5<sup>th</sup> graders who plan to:



# Quarterly Data

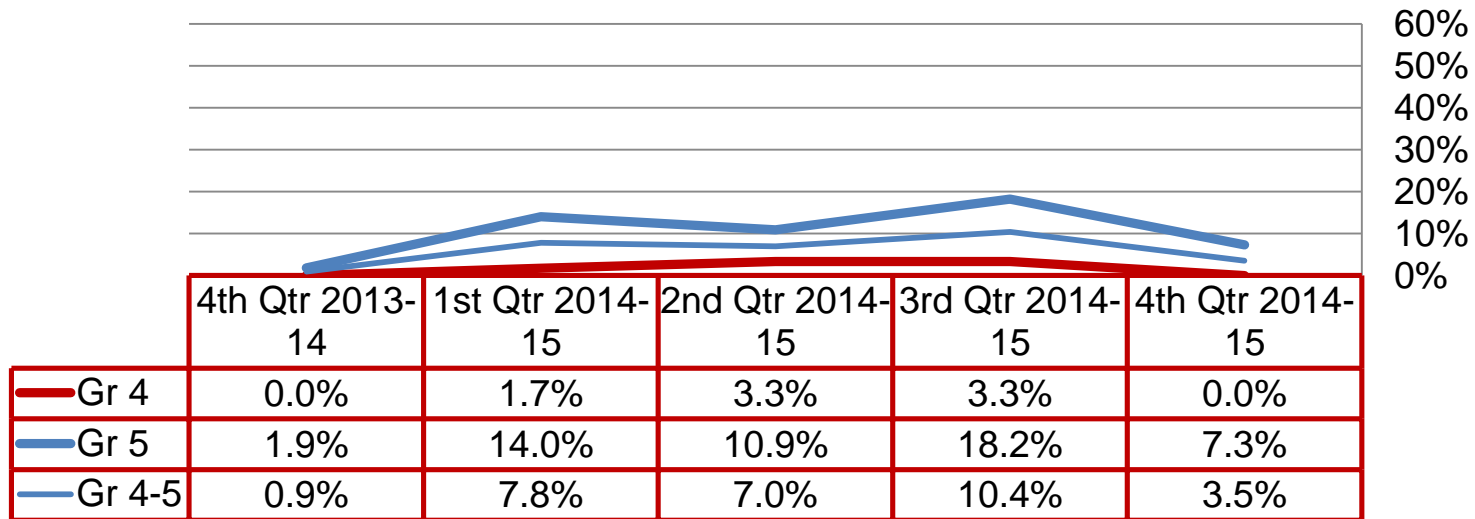
## High Grades

Percent of students earning A+, A, A-, B+, B, B- in all subject areas:



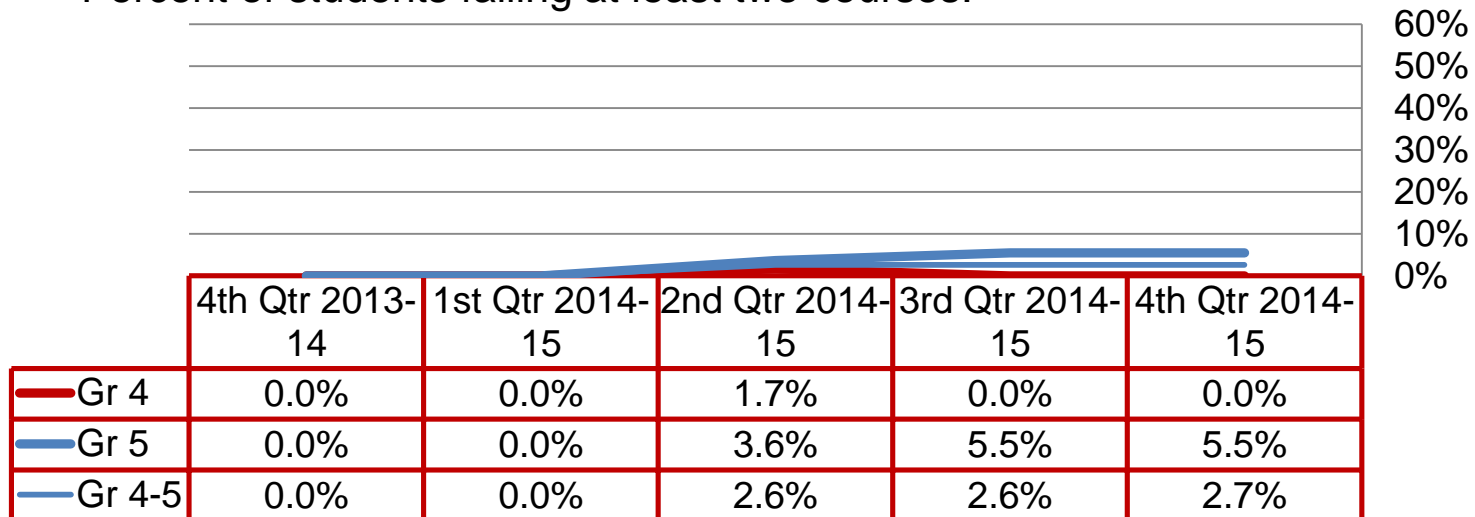
## Failing Grades

Percent of students failing at least one course:



## Failing Grades

Percent of students failing at least two courses:



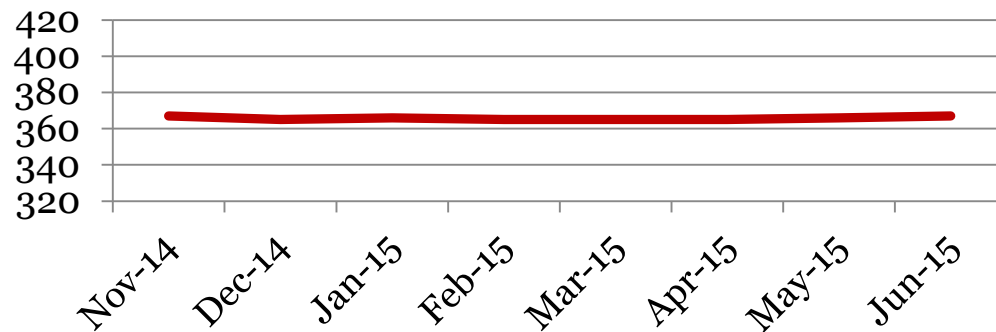
# Monthly Data

Bradley School

## Enrollment – 1<sup>st</sup> of the month

	<b>PK</b>	<b>K</b>	<b>1</b>	<b>2</b>	<b>3</b>	<b>4</b>	<b>5</b>	<b>Total</b>
<b>Jun-15</b>	n/a	<b>51</b>	<b>65</b>	<b>64</b>	<b>73</b>	<b>59</b>	<b>55</b>	<b>367</b>
<b>May-15</b>	n/a	<b>51</b>	<b>64</b>	<b>64</b>	<b>72</b>	<b>60</b>	<b>55</b>	<b>366</b>
<b>Apr-15</b>	n/a	51	63	64	72	60	55	<b>365</b>
<b>Mar-15</b>	n/a	51	63	64	72	60	55	<b>365</b>
<b>Feb-15</b>	n/a	50	63	63	74	60	55	<b>365</b>
<b>Jan-15</b>	4	50	63	62	73	59	55	<b>366</b>
<b>Dec-14</b>	4	50	63	63	72	58	55	<b>365</b>
<b>Nov-14</b>	4	50	63	63	73	57	57	<b>367</b>
<b>Apr-14</b>	8	68	64	66	67	57	54	<b>384</b>

## Total School Enrollment

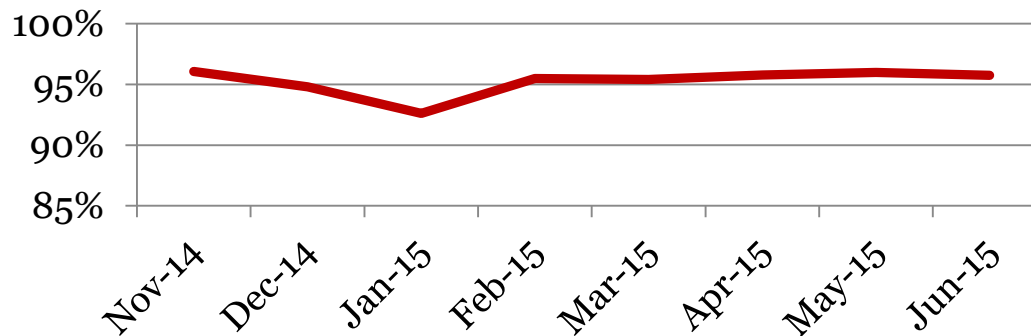


## Attendance – Students

Average daily percent present:

	PK	K	1	2	3	4	5	Total
<b>Jun-15</b>	n/a	94	95	96	96	96	97	96
<b>May-15</b>	n/a	95	96	96	96	96	96	96
<b>Apr-15</b>	n/a	95	97	96	95	96	96	<b>96</b>
<b>Mar-15</b>	n/a	95	97	95	94	95	97	<b>95</b>
<b>Feb-15</b>	n/a	96	95	96	94	95	96	<b>95</b>
<b>Jan-15</b>	68	91	93	93	92	94	94	<b>93</b>
<b>Dec-14</b>	87	96	95	96	94	96	94	<b>95</b>
<b>Nov-14</b>	97	96	98	95	95	96	97	<b>96</b>
<b>Jun-14</b>	89	95	96	96	94	96	96	95

### Total Student Attendance

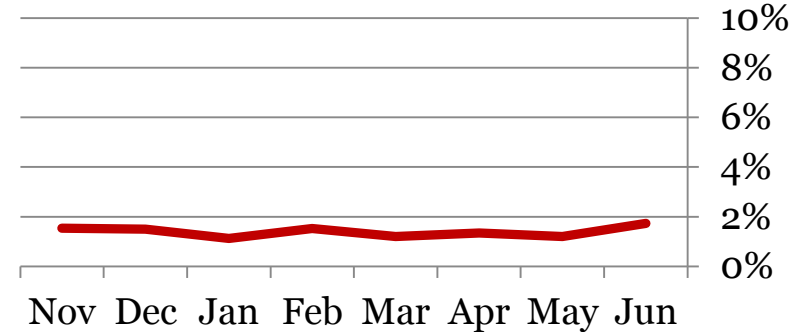


## Tardies

Average daily percent tardy:

	PK	K	1	2	3	4	5	Total
<b>Jun-15</b>	n/a	2	2	2	1	2	1	<b>2</b>
<b>May-15</b>	n/a	1	2	1	1	1	1	<b>1</b>
<b>Apr-15</b>	n/a	1	1	2	1	1	1	<b>1</b>
<b>Mar-15</b>	n/a	1	2	2	1	1	1	<b>1</b>
<b>Feb-15</b>	n/a	1	2	2	2	2	1	<b>2</b>
<b>Jan-15</b>	0	1	1	1	1	1	1	<b>1</b>
<b>Dec-14</b>	4	1	2	1	2	2	1	<b>2</b>
<b>Nov-14</b>	5	1	3	1	2	2	0	<b>2</b>
<b>Jun-15</b>	1	2	2	1	1	1	1	<b>1</b>

## Total Student Tardies

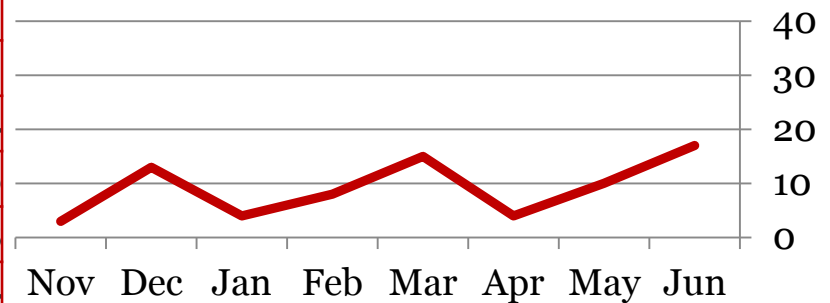


## Tardies

Number of students tardy 5 or more days:

	PK	K	1	2	3	4	5	Total
<b>Jun-15</b>	n/a	2	4	4	3	3	1	<b>17</b>
<b>May-15</b>	n/a	2	2	4	0	2	0	<b>10</b>
<b>Apr-15</b>	n/a	0	2	1	0	1	0	<b>4</b>
<b>Mar-15</b>	n/a	1	4	6	2	2	0	<b>15</b>
<b>Feb-15</b>	n/a	2	2	1	2	1	0	<b>8</b>
<b>Jan-15</b>	0	0	1	1	0	2	0	<b>4</b>
<b>Dec-14</b>	1	2	3	1	3	3	0	<b>13</b>
<b>Nov-14</b>	0	0	0	1	1	1	0	<b>3</b>
<b>Jun-15</b>	<b>0</b>	<b>0</b>	<b>2</b>	<b>1</b>	<b>1</b>	<b>0</b>	<b>1</b>	<b>5</b>

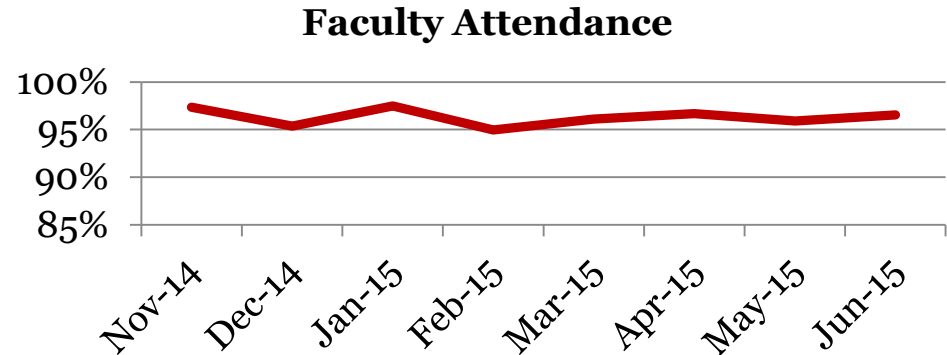
## # Students over Threshold



## Attendance – Faculty

Average daily percent present:

	<b>Total</b>
<b>Jun-15</b>	<b>97</b>
<b>May-15</b>	<b>96</b>
<b>Apr-15</b>	<b>97</b>
<b>Mar-15</b>	<b>96</b>
<b>Feb-15</b>	<b>95</b>
<b>Jan-15</b>	<b>97</b>
<b>Dec-14</b>	<b>95</b>
<b>Nov-14</b>	<b>97</b>
<b>Jun-14</b>	<b>97</b>



*\*This indicator reflects certified staff and does not include absences created by class trips, professional development, workman's comp and FMLA. However % may be reduced due to long term illness beyond FMLA.*



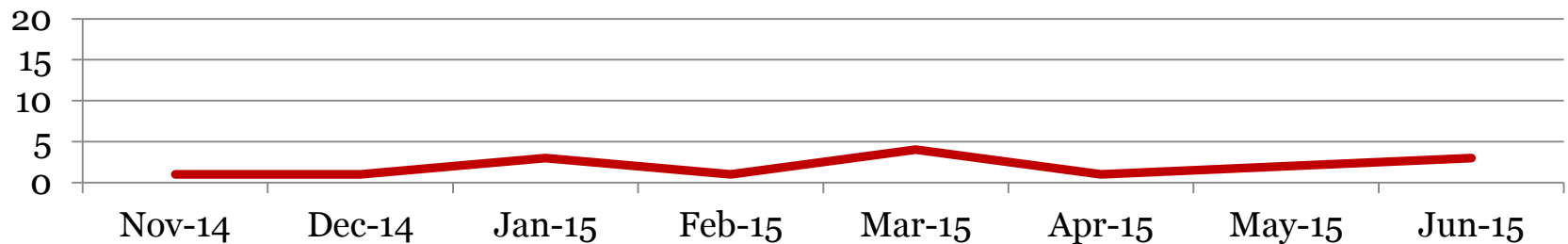
## Suspensions – Out of School

Bradley School

Number of student suspensions (total days of suspension):

	PK	K	1	2	3	4	5	Total								
<b>Jun-15</b>	n/a	0	0	0	1	3	0	0	0	0	0	0	0	0	1	<b>3</b>
<b>May-15</b>	n/a	0	0	0	0	0	0	0	2	2	0	0	0	0	2	<b>2</b>
<b>Apr-15</b>	n/a	(0)	0	(0)	1	(1)	0	(0)	0	(0)	0	(0)	0	(0)	1	<b>(1)</b>
<b>Mar-15</b>	n/a	(0)	0	(0)	0	(0)	0	(0)	1	(4)	0	(0)	0	(0)	1	<b>(4)</b>
<b>Feb-15</b>	n/a	(0)	0	(0)	1	(1)	0	(0)	0	(0)	0	(0)	0	(0)	1	<b>(1)</b>
<b>Jan-15</b>	0	(0)	1	(1)	0	(0)	0	(0)	0	(0)	0	(0)	2	(2)	3	<b>(3)</b>
<b>Dec-14</b>	0	(0)	0	(0)	0	(0)	0	(0)	0	(0)	0	(0)	1	(1)	1	<b>(1)</b>
<b>Nov-14</b>	0	(0)	0	(0)	0	(0)	0	(0)	0	(0)	0	(0)	1	(1)	1	<b>(1)</b>
<b>Jun-14</b>	0	0	0	0	0	0	0	0	0	0	0	0	0	0	0	<b>0</b>

**Total Out of School Suspensions**



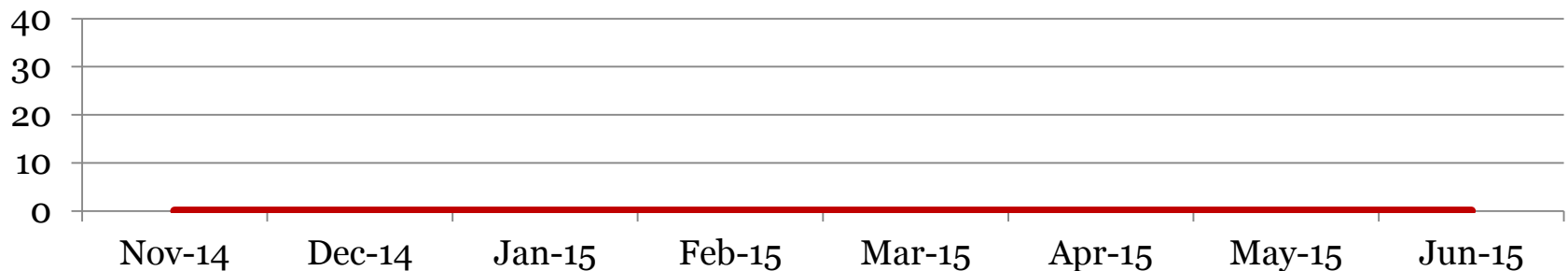
## Suspensions – In School

Bradley School

Number of student suspensions (total days of suspension):

	PK	K	1	2	3	4	5	Total
<b>Jun-15</b>	n/a	0	0	0	0	0	0	0
<b>May-15</b>	n/a	0	0	0	0	0	0	0
<b>Apr-15</b>	n/a	(0)	0	(0)	0	(0)	0	(0)
<b>Mar-15</b>	n/a	(0)	0	(0)	0	(0)	0	(0)
<b>Feb-15</b>	n/a	(0)	0	(0)	0	(0)	0	(0)
<b>Jan-15</b>	0	(0)	0	(0)	0	(0)	0	(0)
<b>Dec-14</b>	0	(0)	0	(0)	0	(0)	0	(0)
<b>Nov-14</b>	0	(0)	0	(0)	0	(0)	0	(0)
<b>Jun-14</b>	0	0	0	0	0	0	0	0

**Total In School Suspensions**



## Newly Enrolled Students

	<b>PK</b>	<b>K</b>	<b>1</b>	<b>2</b>	<b>3</b>	<b>4</b>	<b>5</b>	<b>Total</b>
<b>Summer-15</b>	n/a	31	1	0	0	0	1	<b>33</b>
<b>Jun-15</b>	n/a	0	1	0	1	0	0	<b>2</b>
<b>May-15</b>	n/a	<b>0</b>	<b>0</b>	<b>0</b>	<b>0</b>	<b>0</b>	<b>0</b>	<b>0</b>
<b>Apr-15</b>	n/a	0	1	0	2	2	0	<b>5</b>
<b>Mar-15</b>	n/a	0	0	0	0	0	0	<b>0</b>
<b>Feb-15</b>	n/a	1	0	1	1	0	0	<b>3</b>
<b>Jan-15</b>	0	0	0	1	1	2	0	<b>4</b>
<b>Dec-14</b>	0	0	0	0	1	1	0	<b>2</b>
<b>Nov-14</b>	0	0	0	0	0	1	0	<b>1</b>
<b>Summer-14</b>	1	41	3	5	4	1	4	<b>59</b>
<b>Jun-14</b>	<b>0</b>	<b>0</b>	<b>0</b>	<b>0</b>	<b>0</b>	<b>1</b>	<b>0</b>	<b>1</b>

