



Quarterly Report 1Q21



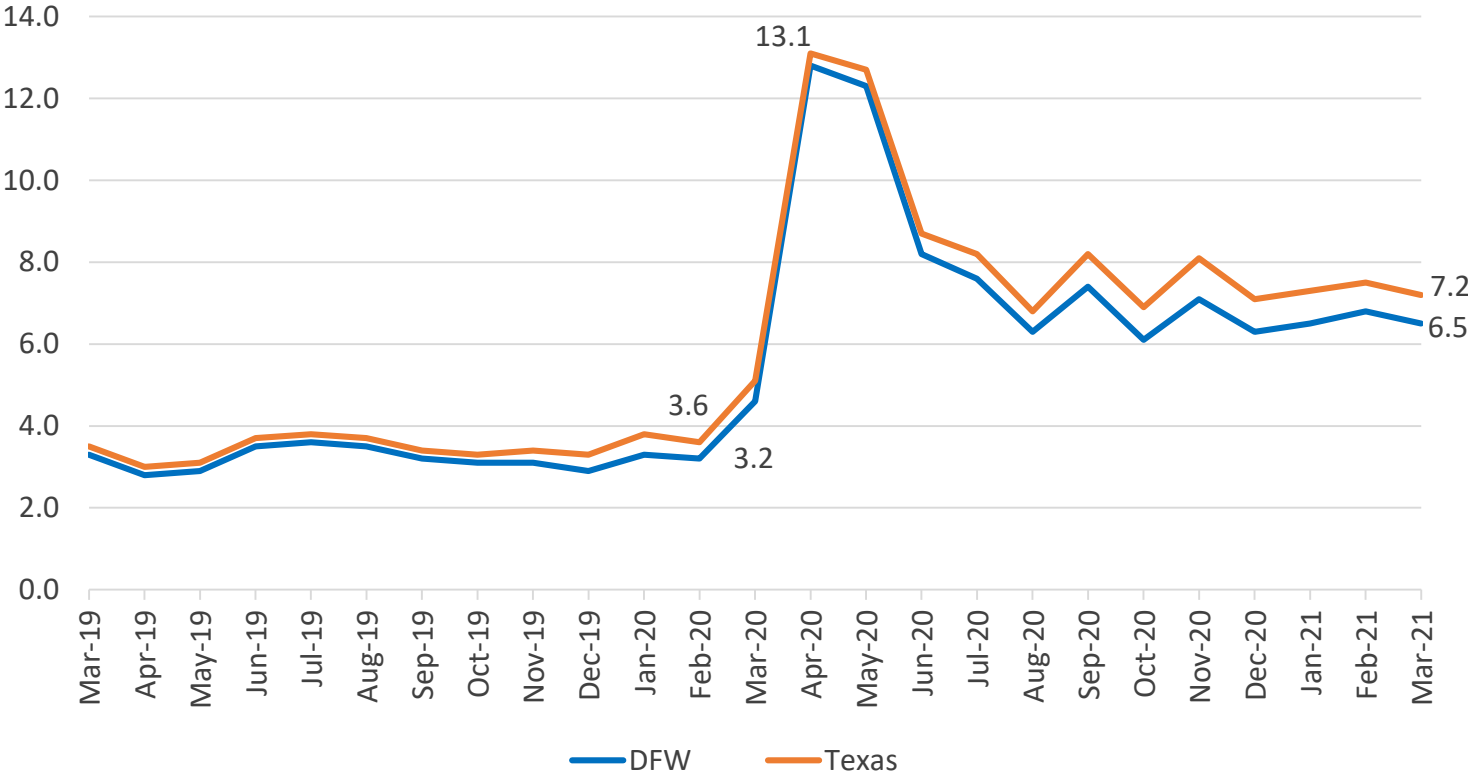
TEMPLETON
DEMOGRAPHICS

hanleywood | metrostudy

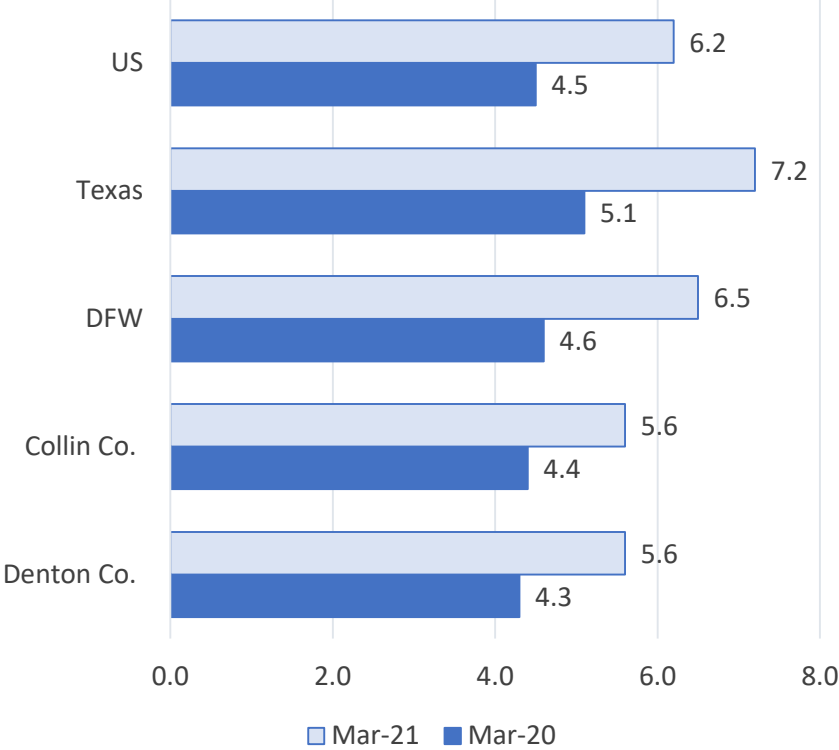


DFW MSA Economic Update

Unemployment Rate, Jan 2018 - Mar 2021

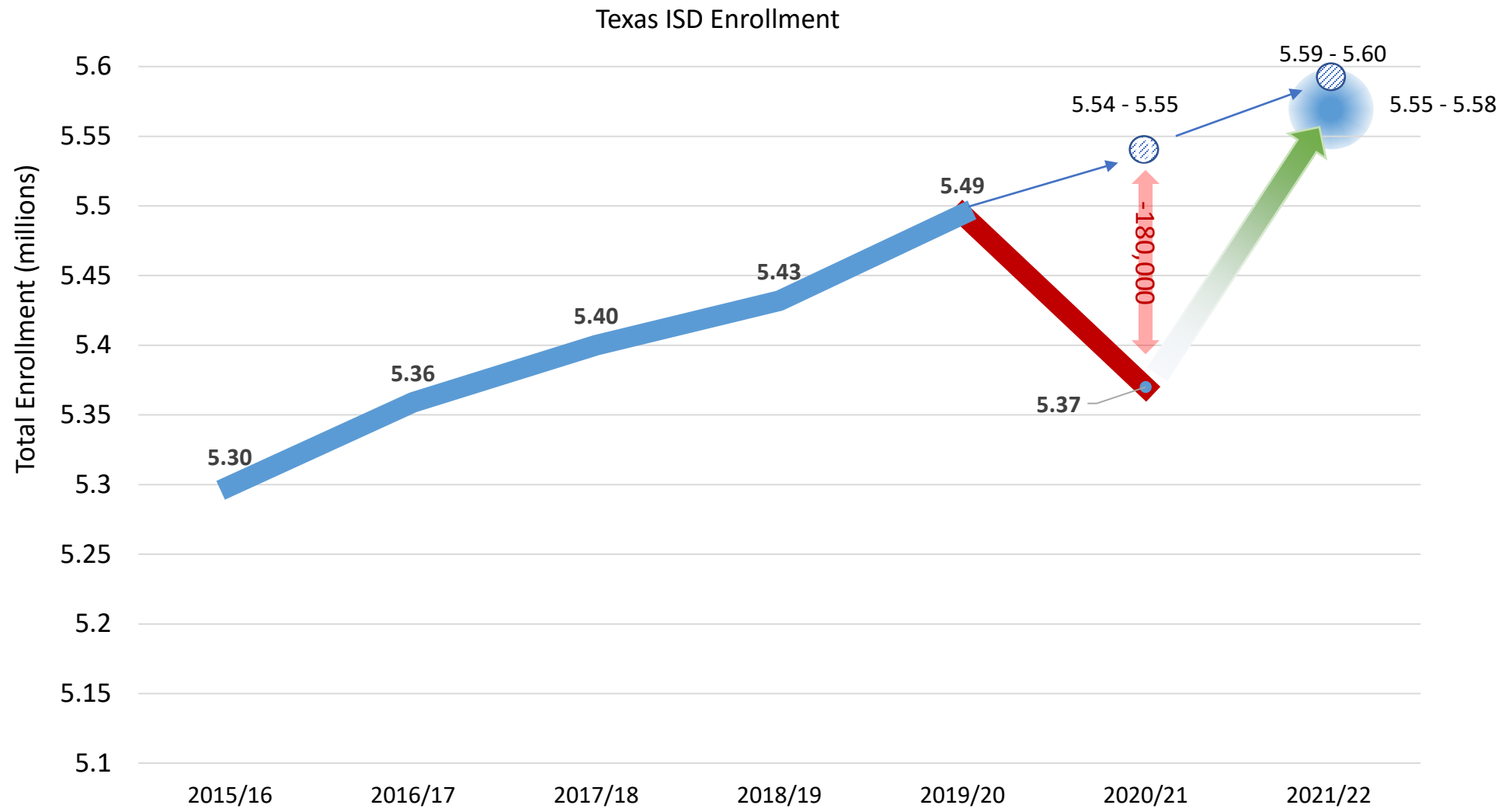


Unemployment Rate, Year Over Year



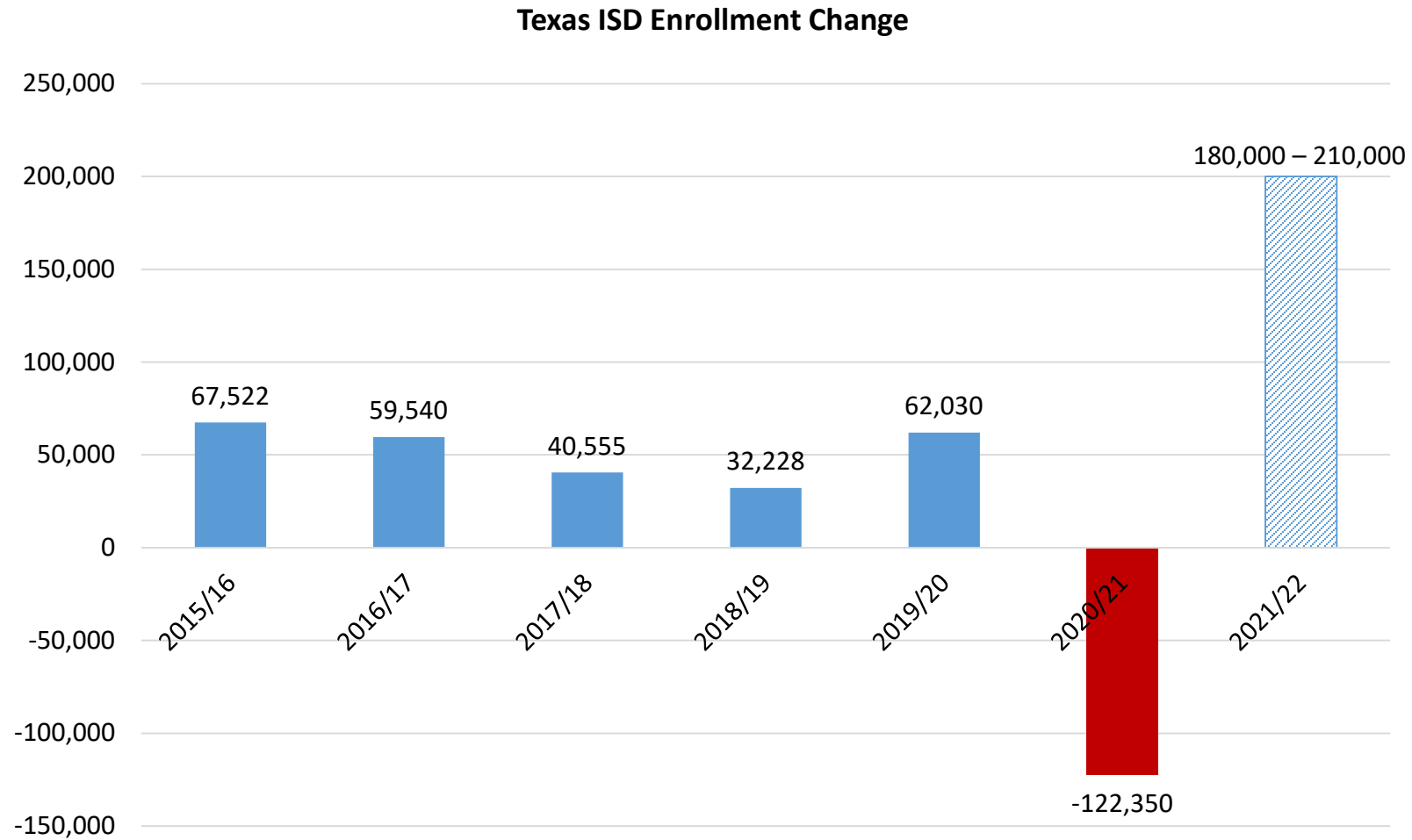


State Enrollment Trends



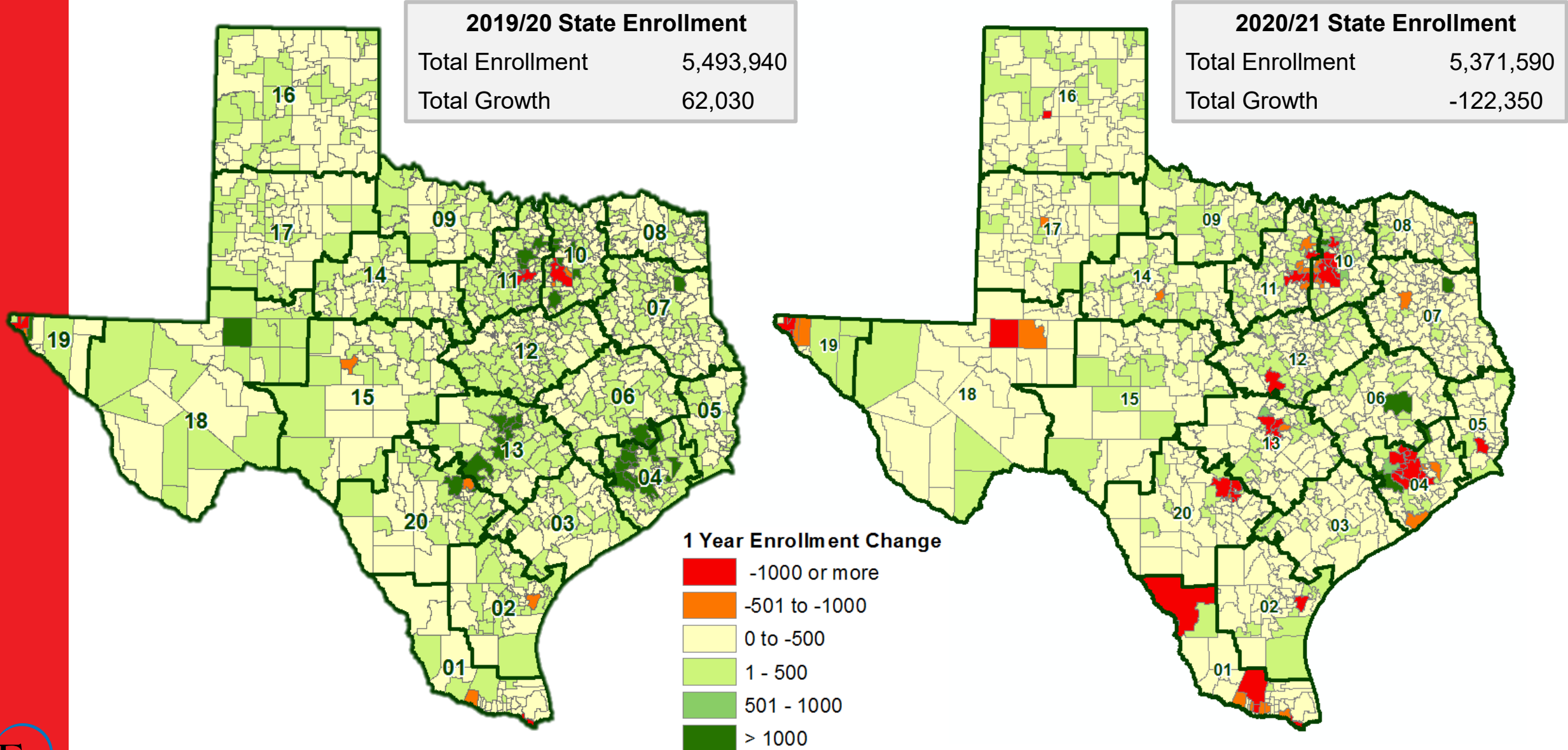


State Enrollment Trends



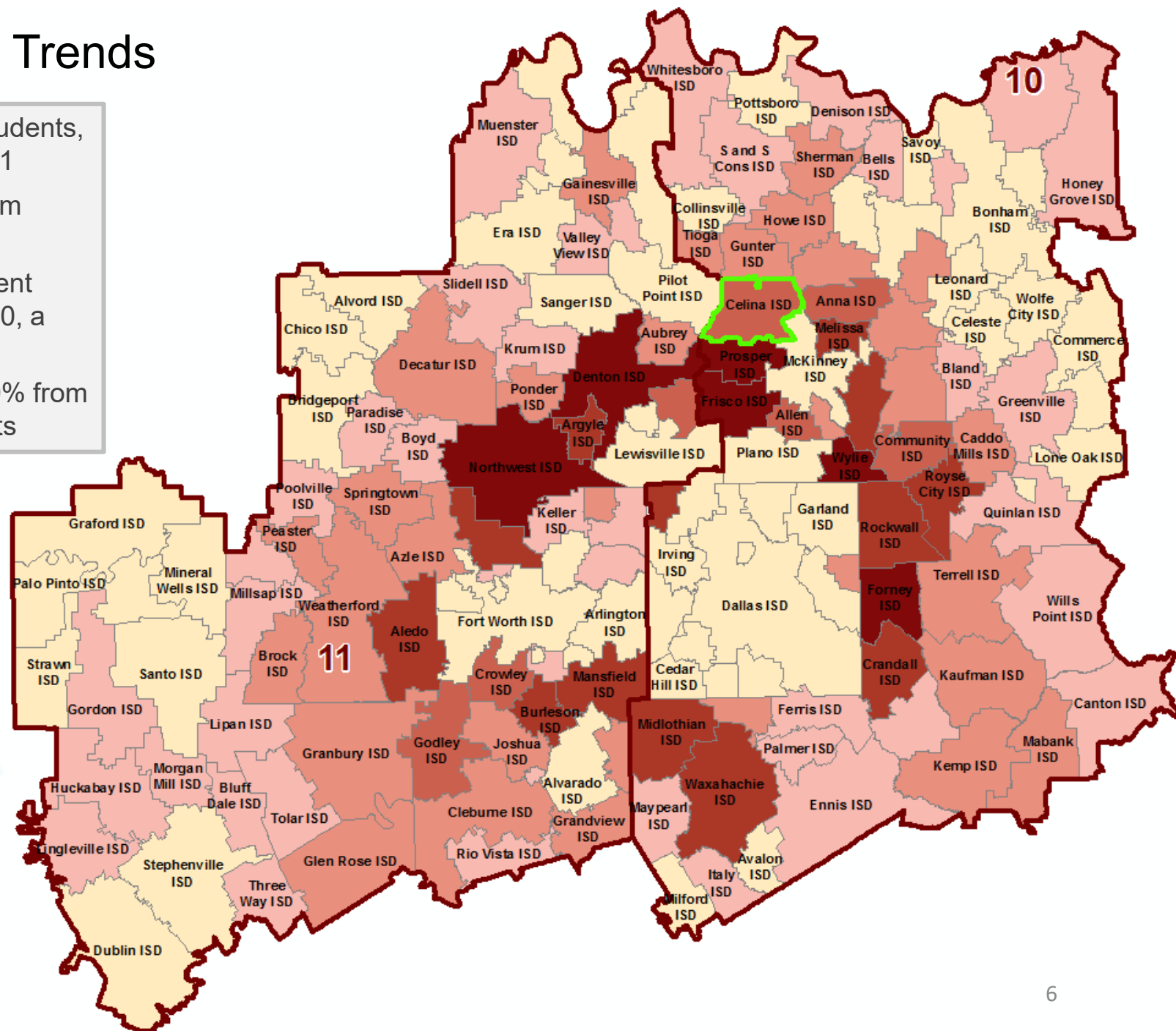
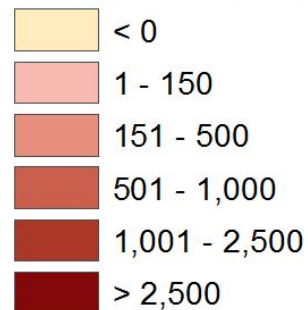


State Enrollment Trends





- Celina ISD enrollment has risen 608 students, or 25.8% between 2015/16 and 2020/21
- CISD enrollment grew 132 students from 2019/20, an increase of 4.6%
- Region 10 has seen an overall enrollment decline of 17,918 students from 2019/20, a decrease of -2.2%
- Region 11 enrollment has declined -2.9% from 2019/20, a difference of 17,104 students





Region 10 Enrollment Trends

Rank	District	2015/16 Enrollment	2019/20 Enrollment	2020/21 Enrollment	5-Year Change (15/16-20/21)	Annual Change (19/20-20/21)	5-YEAR PCT Growth	1-YEAR PCT Growth
1	Prosper ISD	8,294	16,857	19,138	10,844	2,281	130.7%	13.5%
2	Frisco ISD	53,301	62,705	63,493	10,192	788	19.1%	1.3%
3	Forney ISD	9,383	11,977	12,765	3,382	788	36.0%	6.6%
4	Wylie ISD	14,617	17,230	17,482	2,865	252	19.6%	1.5%
5	Princeton ISD	3,877	5,434	5,818	1,941	384	50.1%	7.1%
6	Melissa ISD	2,338	3,580	4,104	1,766	524	75.5%	14.6%
7	Midlothian ISD	8,146	9,783	9,838	1,692	55	20.8%	0.6%
8	Royse City ISD	5,214	6,600	6,886	1,672	286	32.1%	4.3%
9	Waxahachie ISD	8,121	9,481	9,679	1,558	198	19.2%	2.1%
10	Rockwall ISD	15,462	17,007	16,987	1,525	-20	9.9%	-0.1%
11	Crandall ISD	3,454	4,592	4,868	1,414	276	40.9%	6.0%
12	Coppell ISD	11,882	13,218	13,052	1,170	-166	9.8%	-1.3%
13	Anna ISD	3,072	3,828	3,979	907	151	29.5%	3.9%
14	Community ISD	1,919	2,560	2,757	838	197	43.7%	7.7%
15	Allen ISD	20,815	21,880	21,617	802	-263	3.9%	-1.2%
16	Celina ISD	2,354	2,831	2,962	608	131	25.8%	4.6%
17	Terrell ISD	4,266	4,804	4,728	462	-76	10.8%	-1.6%
18	Sunnyvale ISD	1,638	1,979	2,025	387	46	23.6%	2.3%
19	Van Alstyne ISD	1,482	1,798	1,868	386	70	26.0%	3.9%
20	Farmersville ISD	1,566	1,767	1,884	318	117	20.3%	6.6%



DFW New Home Ranking Report

ISD Ranked by Annual Closings – 1Q21

Rank	District Name	Annual Starts	Annual Closings	Inventory	VDL	Future
1	Denton ISD	3,311	2,777	1,833	3,925	18,656
2	Northwest ISD	2,891	2,700	1,431	3,125	24,696
3	Prosper ISD	2,914	2,650	1,741	3,653	19,208
4	Frisco ISD	2,323	2,414	1,503	2,317	8,562
5	Eagle Mt.-Saginaw ISD	2,007	2,295	650	1,241	19,295
6	Forney ISD	2,112	1,855	1,007	3,144	26,490
7	Dallas ISD	1,368	1,837	1,422	2,529	6,412
8	Princeton ISD	1,305	1,138	440	1,746	7,011
9	Rockwall ISD	1,233	1,134	715	1,555	9,135
10	Lewisville ISD	997	1,123	617	1,914	2,324
11	Royse City ISD	1,335	1,050	708	1,897	9,788
12	Crowley ISD	879	989	440	1,571	16,383
13	Melissa ISD	1,018	917	486	683	4,401
14	Mansfield ISD	1,061	910	629	1,180	6,774
15	Little Elm ISD	849	901	459	868	1,357
16	McKinney ISD	949	889	533	2,009	13,181
17	Crandall ISD	911	794	358	866	7,341
18	Fort Worth ISD	881	782	460	1,377	4,834
19	Wylie ISD	863	774	458	796	3,243
20	Waxahachie ISD	873	768	560	834	19,345

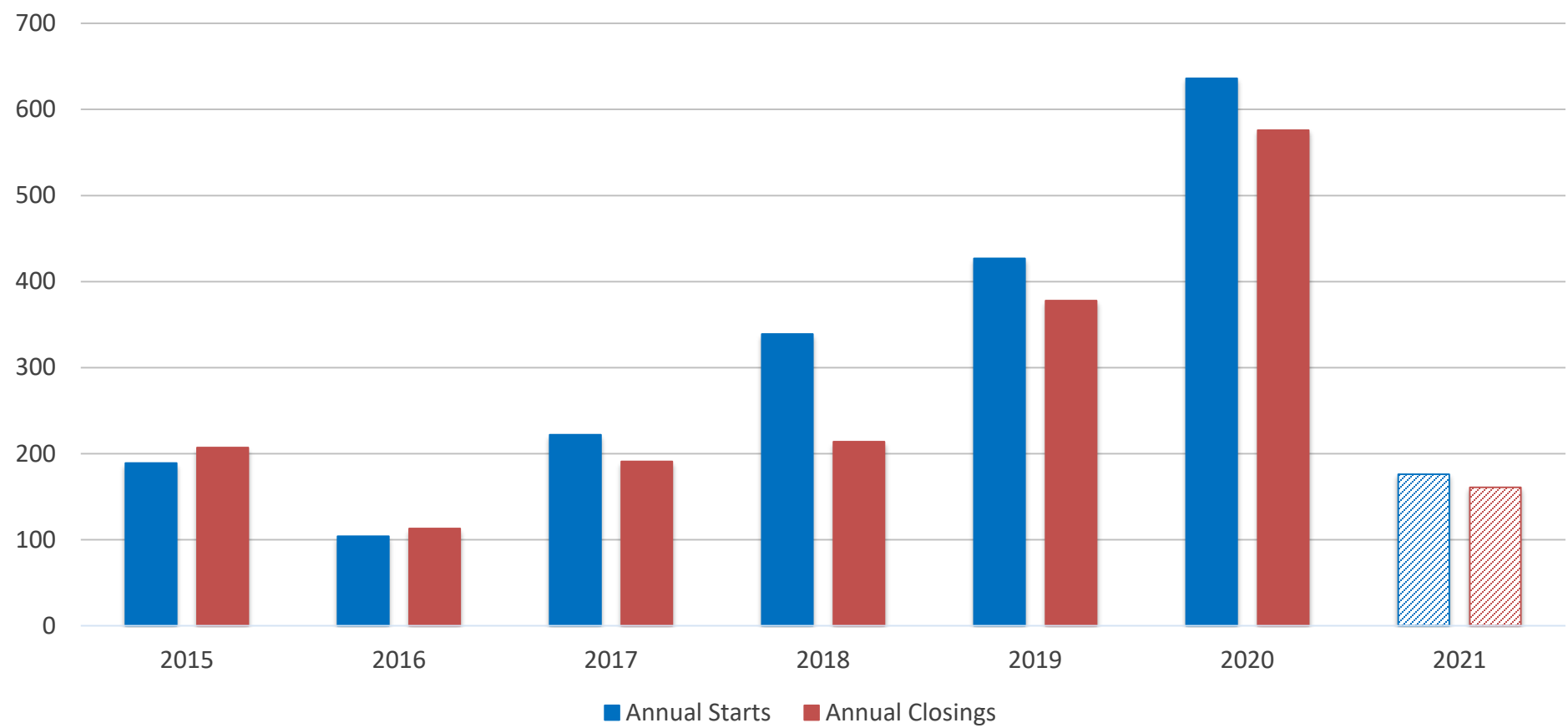


25	Red Oak ISD	774	670	306	557	2,097
26	Celina ISD	690	639	353	1,884	22,375*
27	Garland ISD	720	619	434	1,249	3,900

* Based on additional
Templeton Demographics
housing research



Celina ISD New Housing Activity



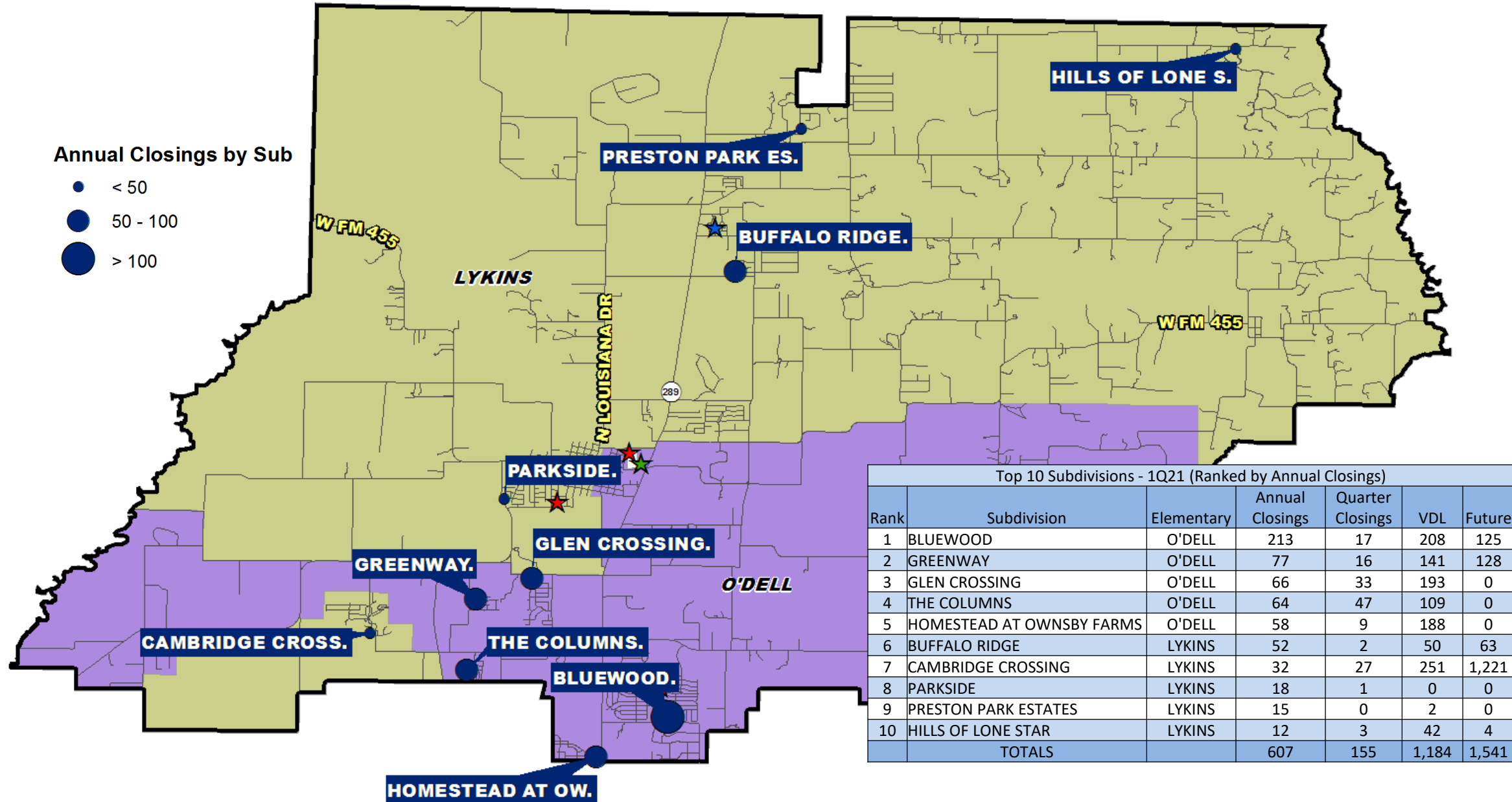
Starts	2015	2016	2017	2018	2019	2020	2021
1Q	39	37	46	72	91	120	176
2Q	54	15	66	93	81	180	
3Q	45	29	50	91	121	178	
4Q	51	23	60	83	134	158	
Total	189	104	222	339	427	636	176

Closings	2015	2016	2017	2018	2019	2020	2021
1Q	33	28	24	32	59	107	161
2Q	53	34	33	31	109	146	
3Q	62	26	67	70	110	175	
4Q	59	25	67	81	100	148	
Total	207	113	191	214	378	576	161



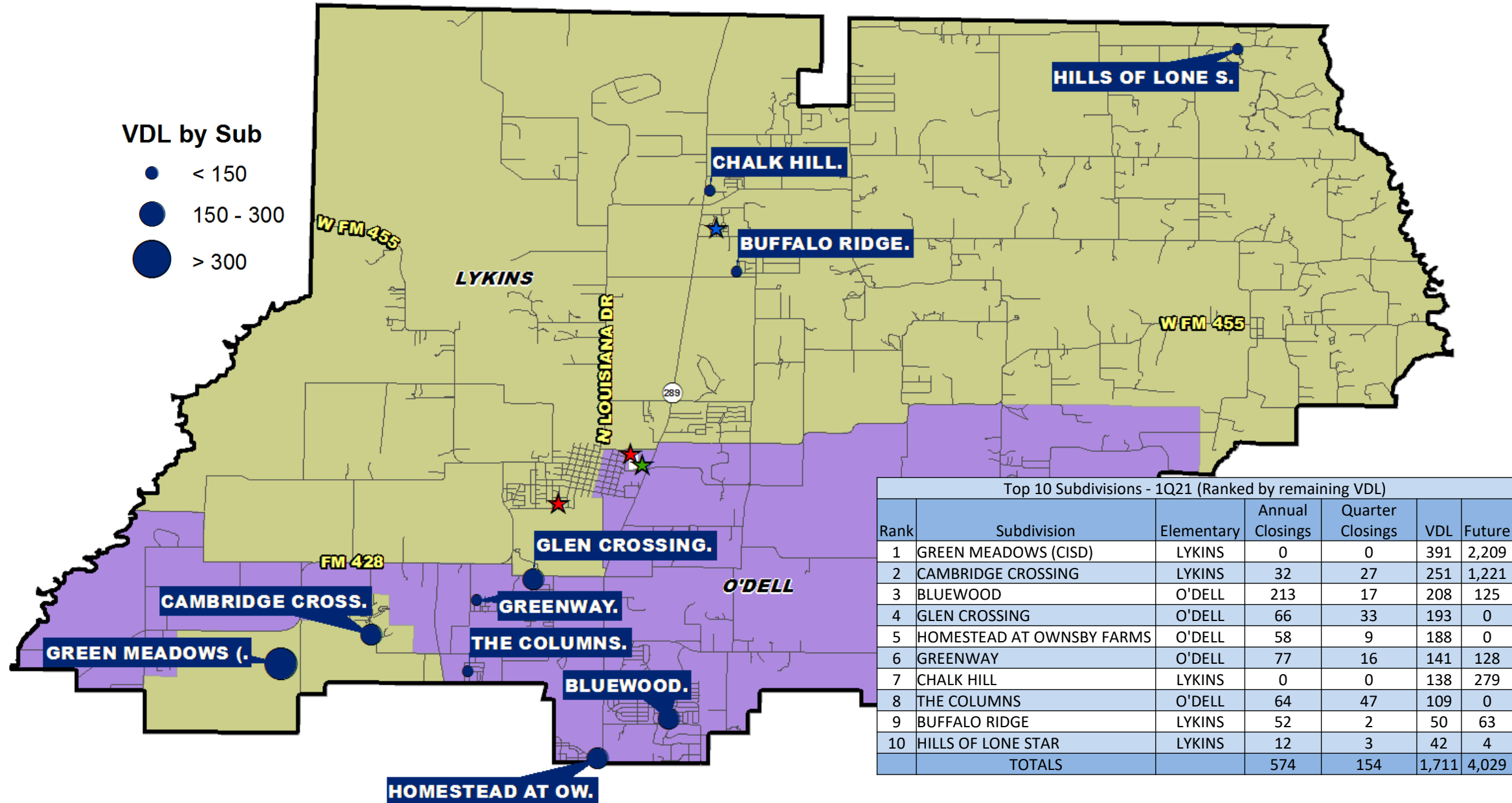


Annual Closing Distribution



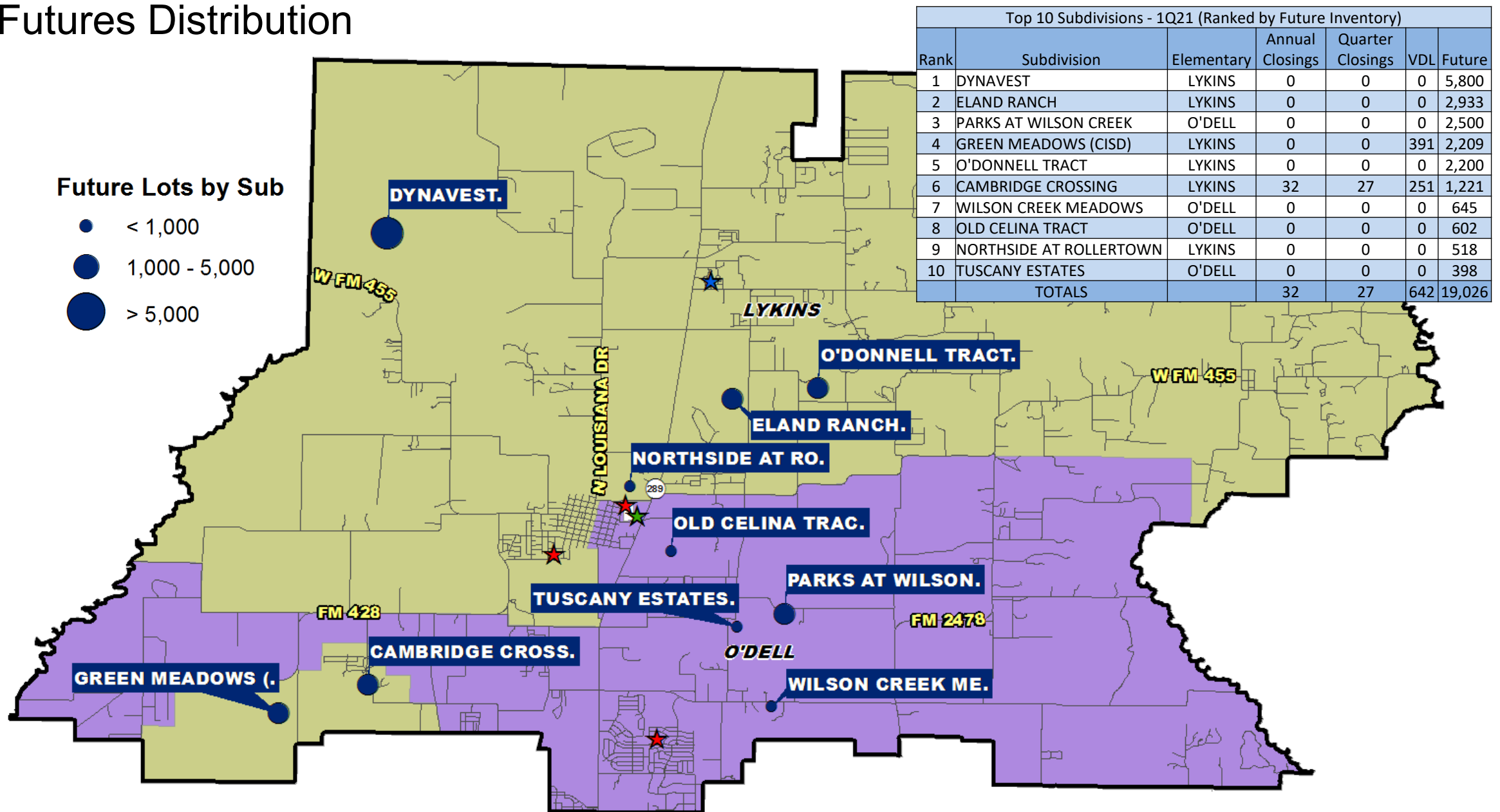


VDL Distribution






Futures Distribution





District Housing Overview by Elementary Zone

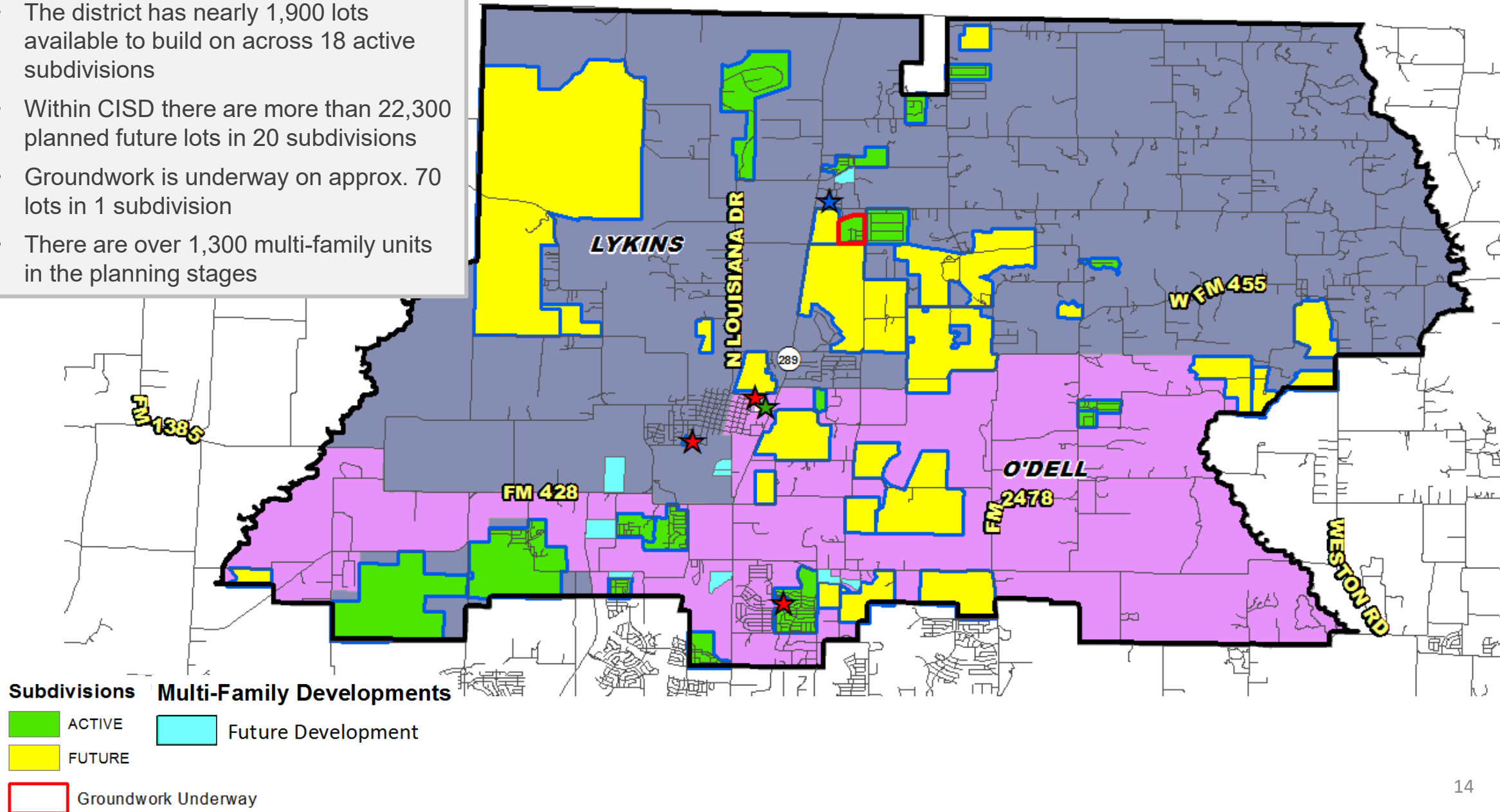
Elementary	Annual Starts	Quarter Starts	Annual Closings	Quarter Closings	Under Const.	Inventory	Vacant Dev. Lots	Future
LYKINS	207	89	155	36	109	138	969	16,726
O'DELL	483	87	484	125	149	215	915	5,649
Grand Total	690	176	639	161	258	353	1,884	22,375

 Highest activity in the category



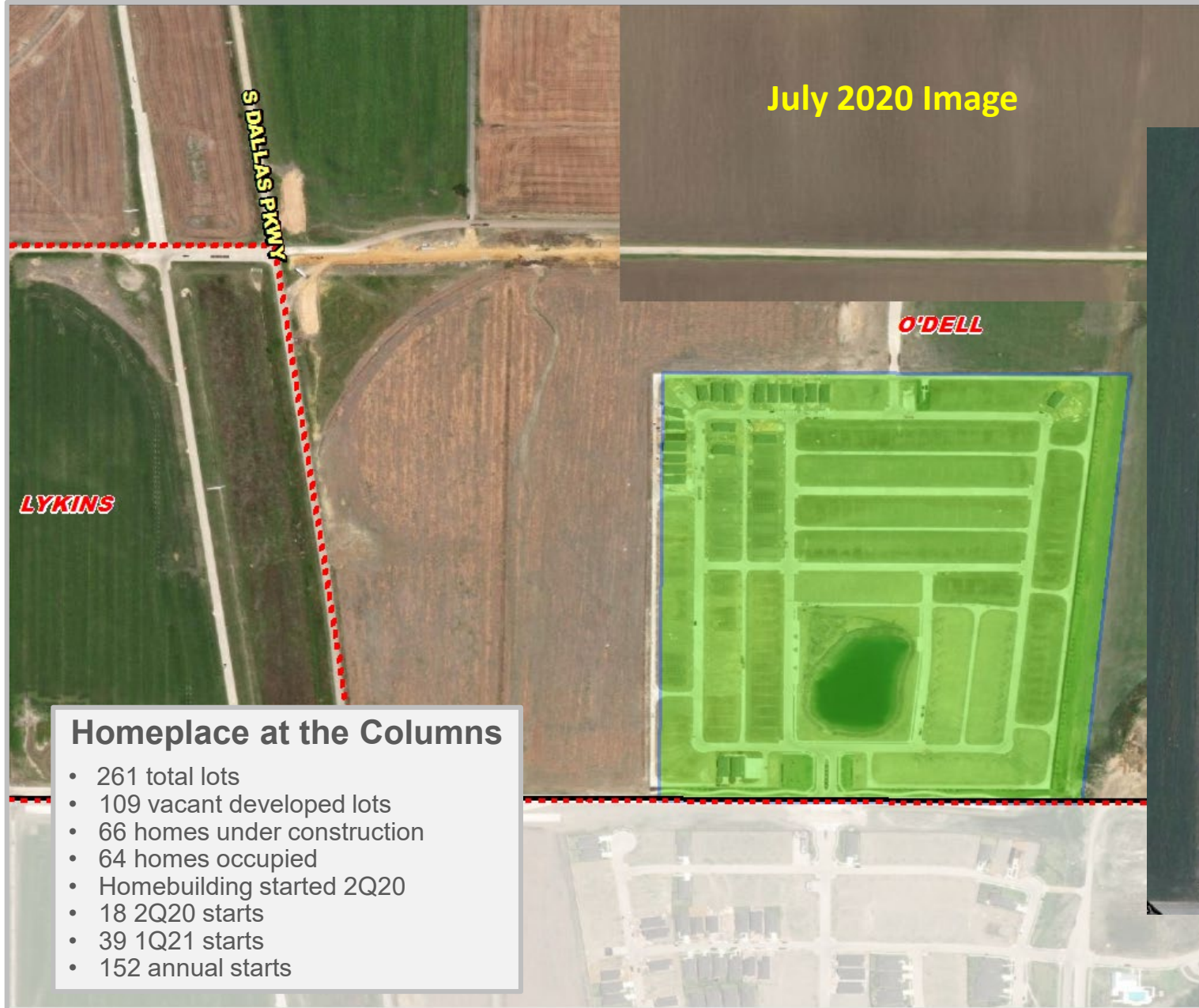
District Housing Overview

- The district has nearly 1,900 lots available to build on across 18 active subdivisions
- Within Cisd there are more than 22,300 planned future lots in 20 subdivisions
- Groundwork is underway on approx. 70 lots in 1 subdivision
- There are over 1,300 multi-family units in the planning stages





Residential Activity



July 2020 Image



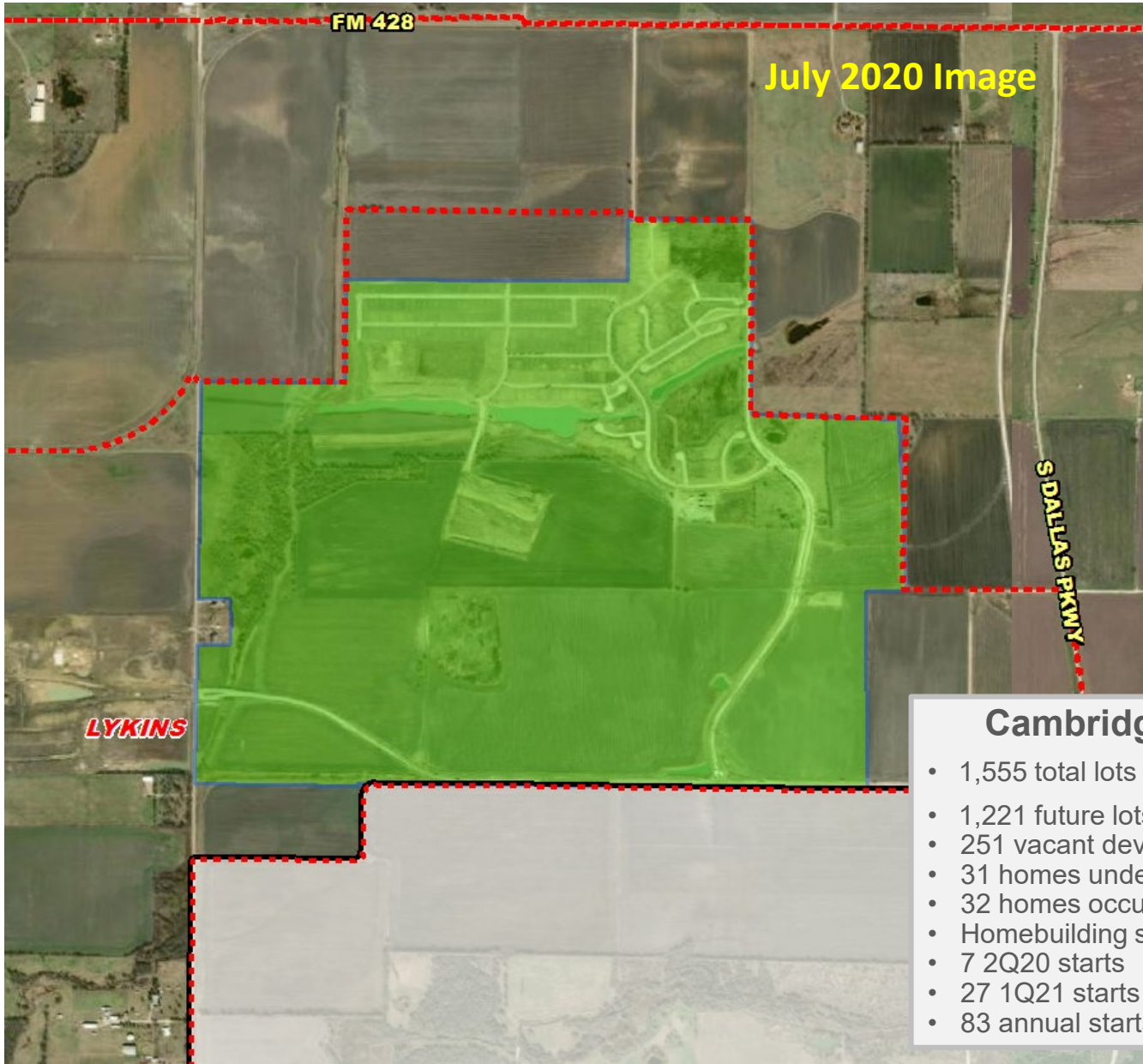
March 2021 Image

Homeplace at the Columns

- 261 total lots
- 109 vacant developed lots
- 66 homes under construction
- 64 homes occupied
- Homebuilding started 2Q20
- 18 2Q20 starts
- 39 1Q21 starts
- 152 annual starts



Residential Activity



Cambridge Crossing

- 1,555 total lots
- 1,221 future lots
- 251 vacant developed lots
- 31 homes under construction
- 32 homes occupied
- Homebuilding started 2Q20
- 7 2Q20 starts
- 27 1Q21 starts
- 83 annual starts



TEA Transfer Report

Transfers In From:	2015/16	2016/17	2017/18	2018/19	2019/20	2020/21	5-Year Change
Anna ISD	6	6	3	3	3	3	-3
Denton ISD	7	3	3	3	3	4	-3
Frisco ISD	6	3	13	0	4	3	-3
Gunter ISD	4	9	12	10	3	3	-1
McKinney ISD	5	3	3	3	3	3	-2
Pilot Point ISD	3	3	3	3	3	3	0
Prosper ISD	6	5	3	3	3	3	-3
Total Transfers In*	48	44	61	43	49	43	-5

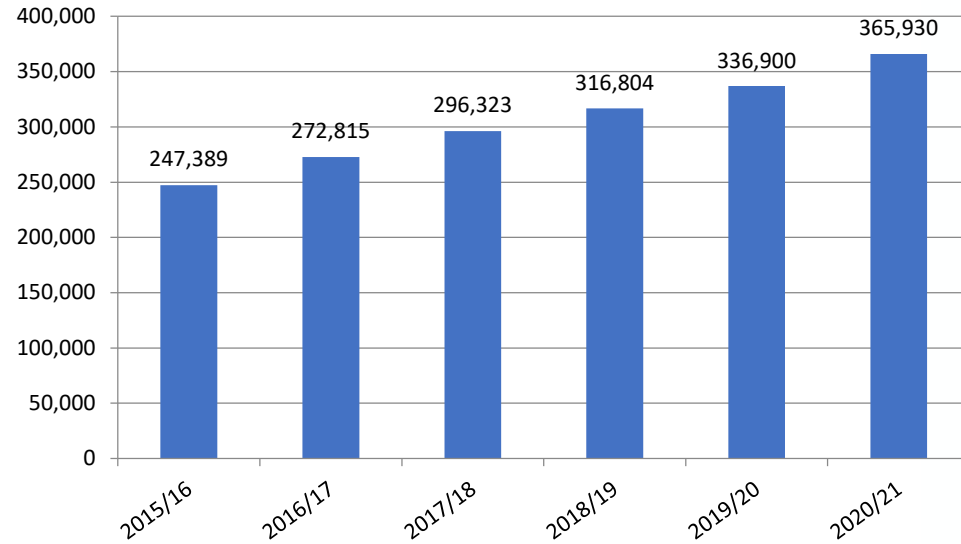
Transfers Out To:	2015/16	2016/17	2017/18	2018/19	2019/20	2020/21	5-Year Change
Allen ISD	3	3	3	3	3	3	0
Anna ISD	3	3	3	3	3	3	0
Denton ISD	3	3	3	3	3	4	1
Frisco ISD	22	23	27	33	40	37	15
Gunter ISD	31	28	27	19	10	14	-17
Imagine International Academy of N. TX	10	10	10	10	4	11	1
McKinney ISD	11	11	16	19	16	13	2
Prosper ISD	46	43	44	54	72	82	36
Texas College Preparatory Academies	3	3	3	3	4	10	7
Van Alstyne ISD	3	3	3	3	3	3	0
Total Transfers Out*	150	135	148	165	186	213	63

*Totals include additional districts per TEA rounding rules

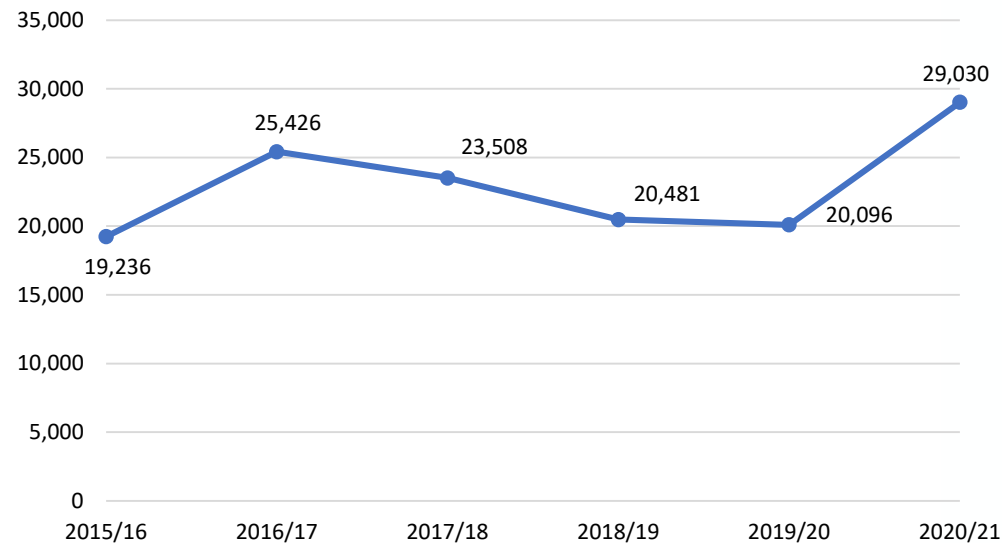


Charter Schools in Texas

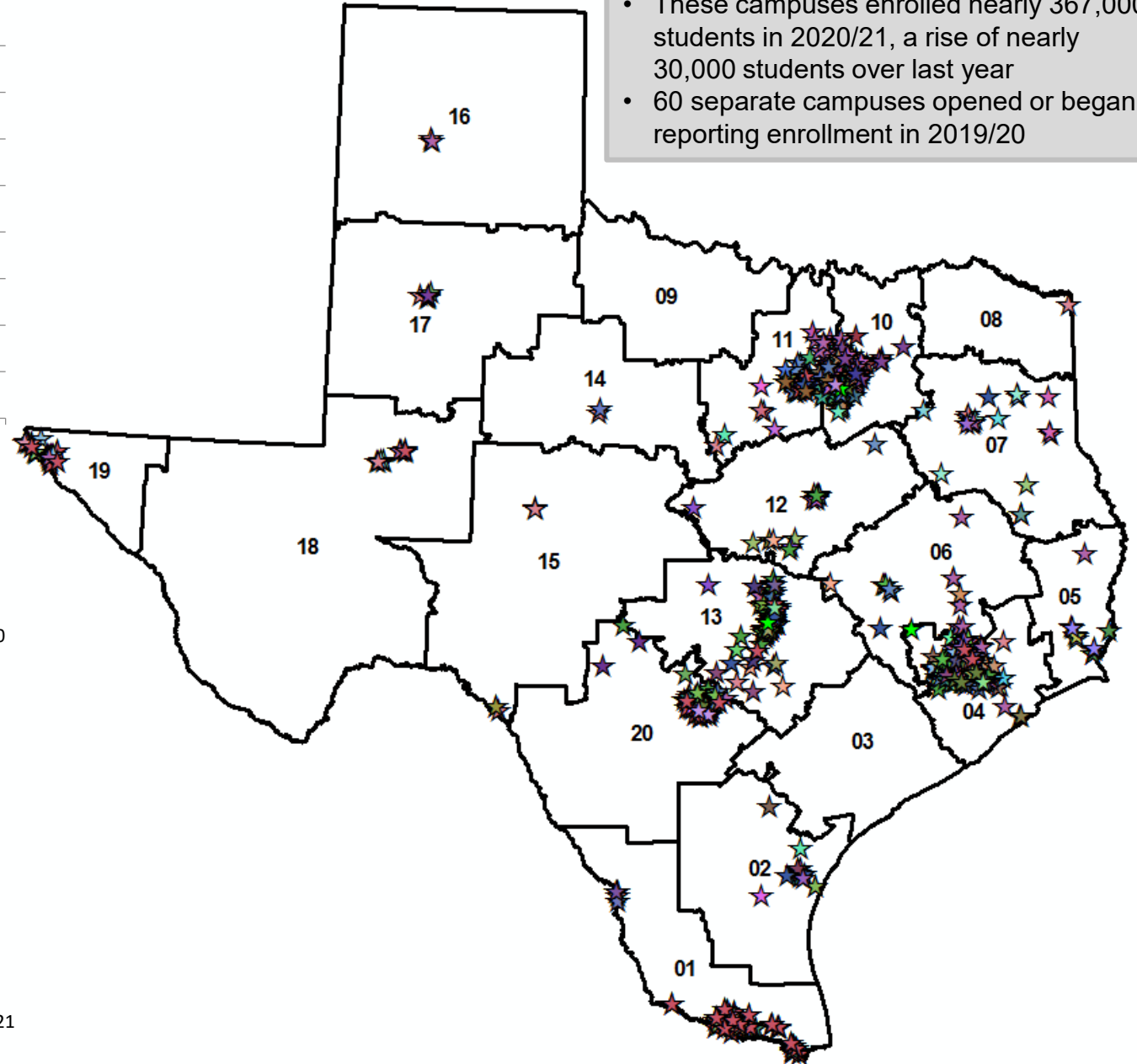
Total Charter Enrollment



Charter Enrollment Change



- There are currently more than 830 charter school campuses open across Texas
- These campuses enrolled nearly 367,000 students in 2020/21, a rise of nearly 30,000 students over last year
- 60 separate campuses opened or began reporting enrollment in 2019/20



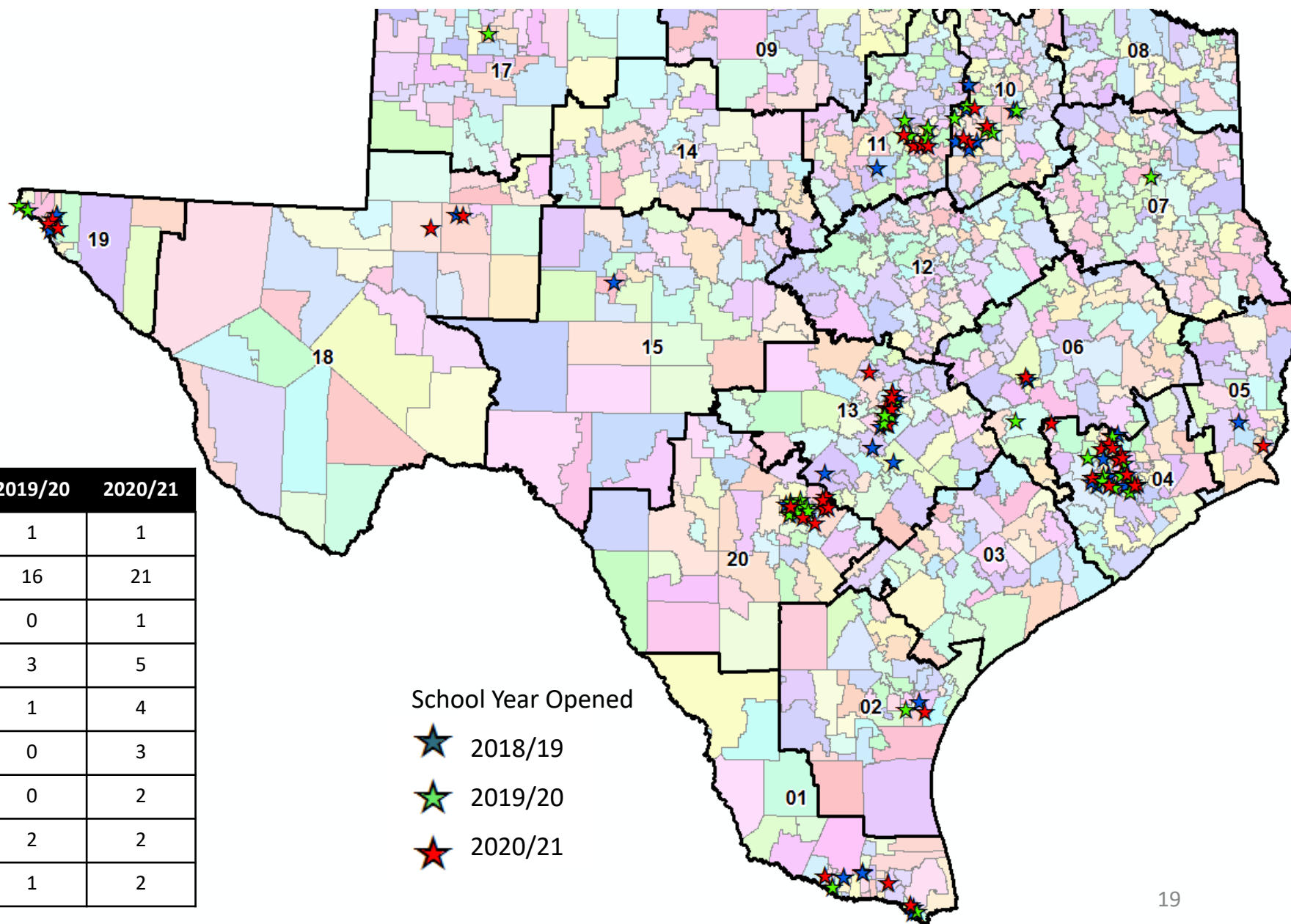


New Campus Growth

New Campuses by Charter Organization & Region, 2018/19 – 2020/21

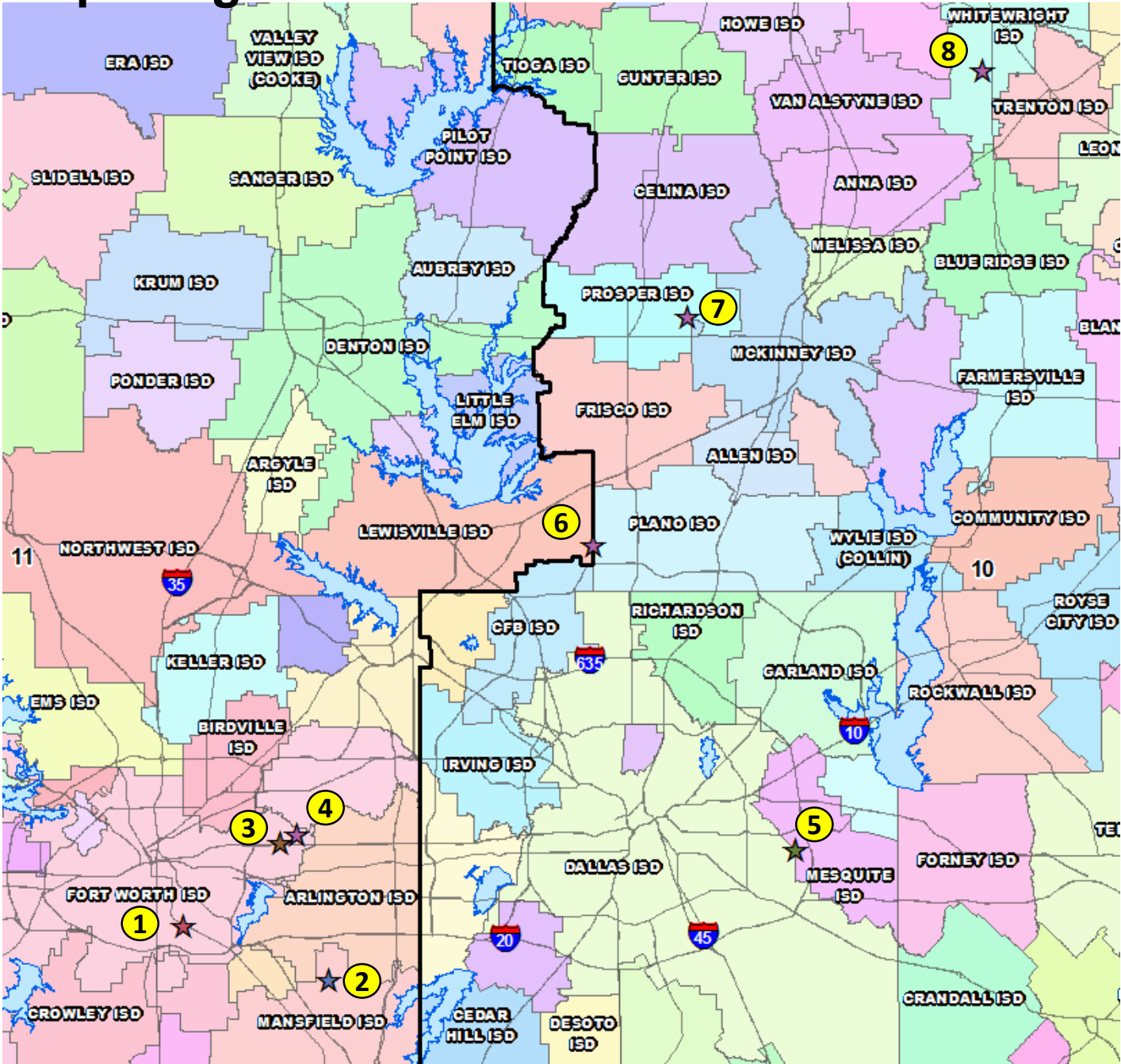
Region	2018/19	2019/20	2020/21
Region 1	6	4	6
Region 4	11	10	15
Region 10	6	5	5
Region 11	3	6	5
Region 13	11	4	8
Region 19	4	3	4
Region 20	4	9	12
Total	45	41	60

Charter Organization	2018/19	2019/20	2020/21
Harmony	2	1	1
IDEA	14	16	21
International Leadership of Texas	6	0	1
KIPP	2	3	5
Uplift	1	1	4
Basis Texas	0	0	3
Premier High School	1	0	2
Great Hearts Texas	1	2	2
YES Prep	1	1	2





New Campuses Opening in DFW in 2021/22





New Campuses Opening in DFW in 2021/22

#	Charter School	Location	Grades	Notes
1	IDEA Southeast	2935 E Seminary Dr	KG – 2, 6	Will be K-8, anticipated opening with 350-400 students
2	Great Hearts Arlington	6701 S Cooper St	KG – 7	Approx. 680 student capacity
3	Uplift Crescendo Prep	1200 Cooks Ln	PK – 5	Opening with 300-400 students
4	Ignite Community School Ft Worth	8601 Randol Mill Rd	KG – 3, 6-7	Opening with 250-275 students, part of ResponsiveEd charter
5	KIPP Pleasant Grove HS	2100 W Bruton Rd	9	Anticipate 520 max students in 9-12, moving to existing site in 2022/23
6	Foundation School of Autism- Dallas	2200 Midway Rd	PK - 1	Expect 40 students, part of ResponsiveEd charter
7	Founders Classical Academy of Prosper	3598 N Custer Rd	KG – 8	Anticipate 650-700 enrollment
8	Quest Collegiate Academy Whitewright	498 Bethel Cannon Rd	KG – 5	Opening with 120 students



Virtual Learning Programs... Ahead of the Curve

5 traditional ISDs and 2 charter schools offered a virtual only campus for statewide enrollment before the 2020/21 school year

Hallsville ISD



TEXAS
VIRTUAL ACADEMYSM

POWERED BY STRIDE K12

ResponsiveEd



iUniversity Prep

A Grapevine-Colleyville ISD Virtual Academy

Huntsville ISD



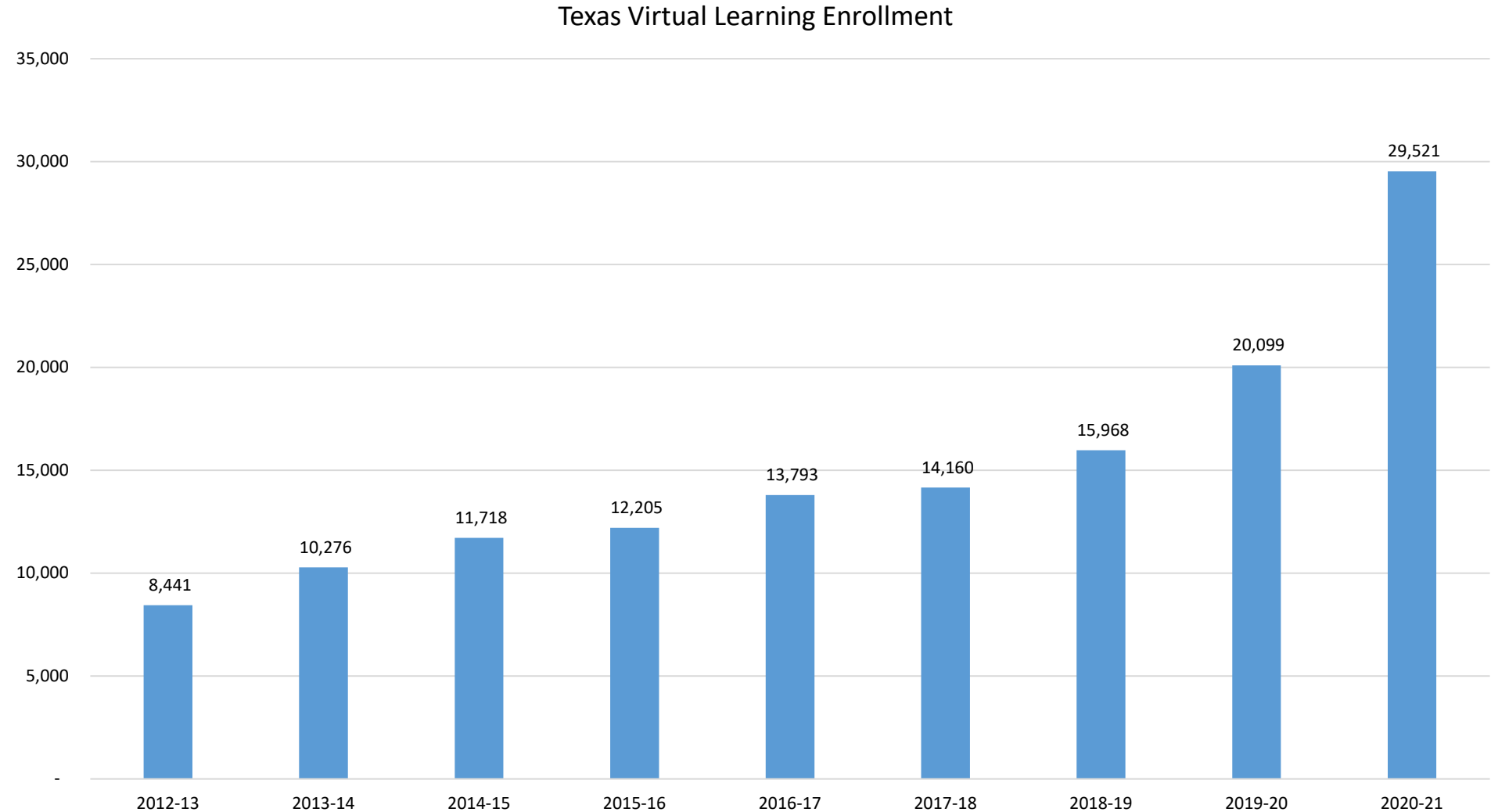
TEXAS
ONLINE PREPARATORY
SCHOOL

Houston ISD





Virtual Learning Programs

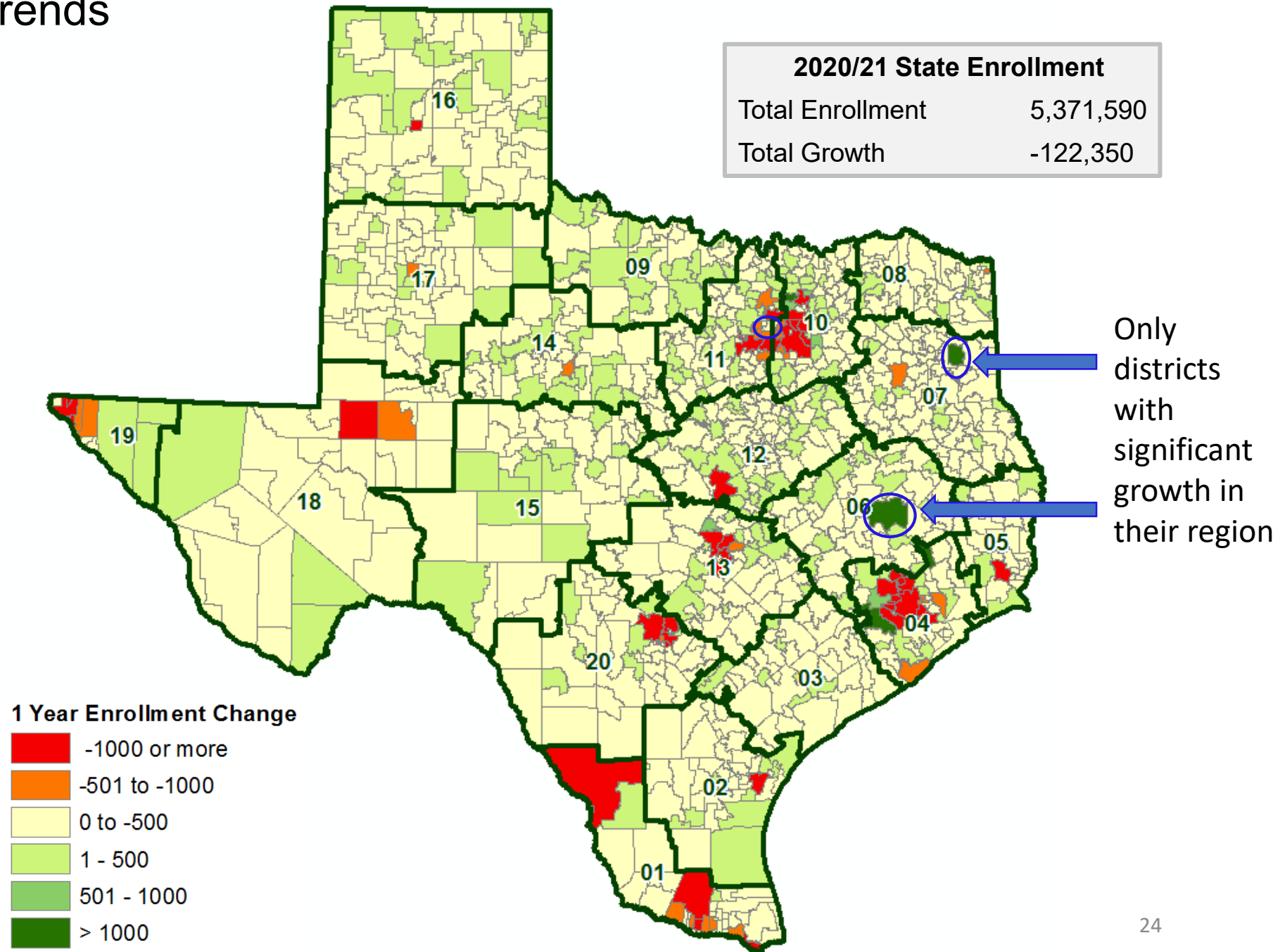


Those 7 campuses added more than 9,400 students in 2020/21, a growth rate of 47%



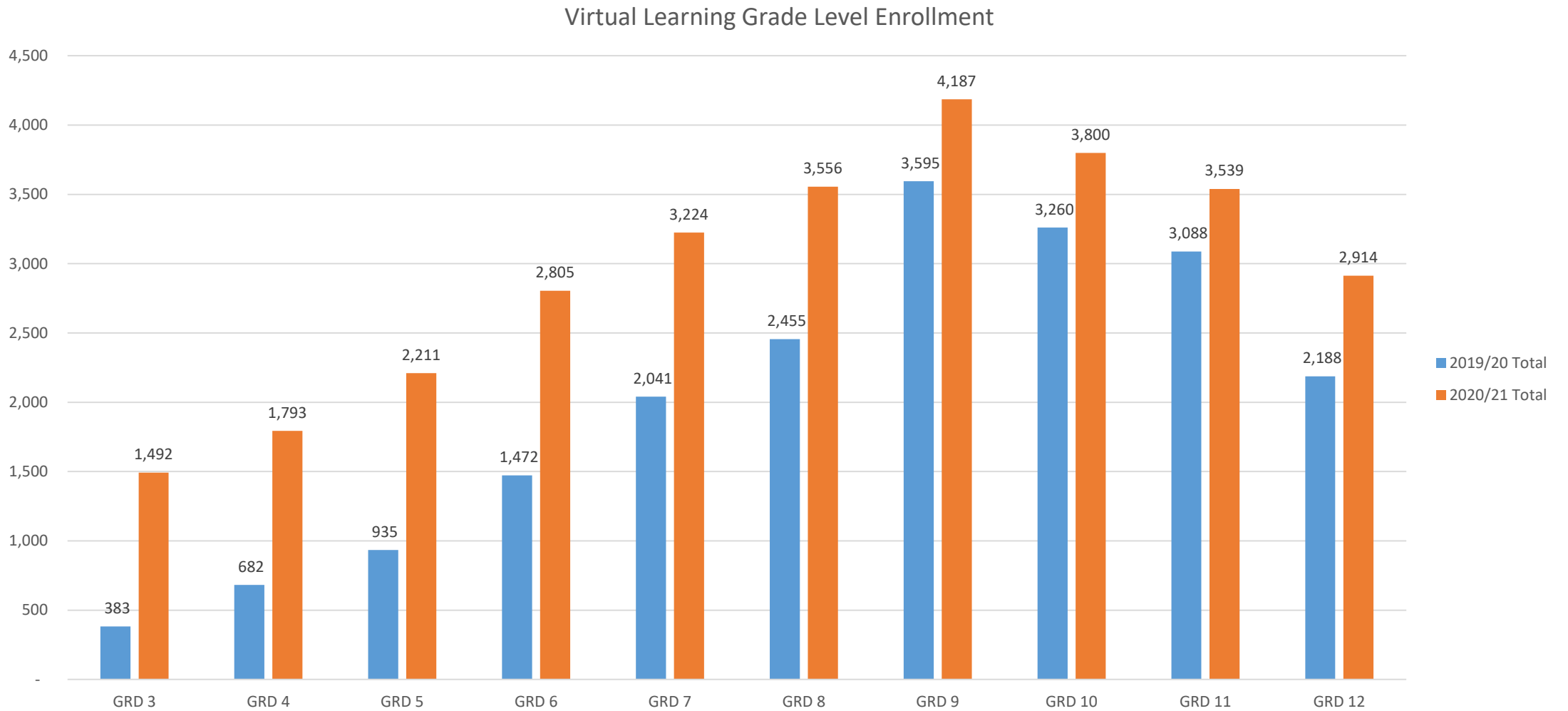


State Enrollment Trends





Virtual Learning Programs





Virtual Learning Programs... The Next Generation



Virtual Learning May Remain An Option At Some North Texas School Districts

Denton ISD K-8 Virtual Academy



K-8 Virtual Academy Enrollment Now Open

Interested in enrolling in the K-8 Virtual Academy? Please click [here](#) to fill out our online commitment form.



HOUSTON★CHRONICLE

LOCAL // EDUCATION

'Here to stay': Houston-area schools plan for virtual classes beyond the pandemic



Ten Year Forecast by Grade Level

Year (Oct)	EE	PK	K	1st	2nd	3rd	4th	5th	6th	7th	8th	9th	10th	11th	12th	Total	Total Growth	% Growth
2016/17	9	33	207	186	161	180	167	183	183	199	188	207	196	164	166	2,429		
2017/18	7	39	177	194	195	173	189	184	208	203	215	213	215	205	159	2,576	147	6.1%
2018/19	11	42	188	200	201	203	192	199	202	229	211	218	221	205	200	2,722	146	5.7%
2019/20	13	47	201	215	201	217	213	206	206	217	245	212	223	214	200	2,830	108	4.0%
2020/21	10	40	190	215	212	211	235	232	227	230	242	268	220	219	209	2,960	130	4.6%
2021/22	10	40	266	261	276	270	268	300	278	273	276	264	279	219	216	3,496	536	18.1%
2022/23	10	40	293	313	307	325	318	314	360	334	328	304	275	275	217	4,013	517	14.8%
2023/24	10	40	352	344	361	354	384	368	393	450	418	361	322	272	272	4,701	688	17.1%
2024/25	10	40	422	396	396	417	408	445	441	452	518	464	383	319	268	5,379	678	14.4%
2025/26	10	40	506	464	457	457	483	472	489	494	492	575	483	378	315	6,115	736	13.7%
2026/27	10	40	607	570	534	528	528	560	566	587	593	546	591	478	372	7,110	995	16.3%
2027/28	10	40	698	683	658	617	611	611	672	679	704	659	562	585	470	8,259	1,149	16.2%
2028/29	10	40	800	786	788	760	713	708	672	739	747	781	678	556	575	9,353	1,094	13.2%
2029/30	10	40	919	900	906	910	879	826	779	740	793	829	803	671	547	10,552	1,199	12.8%
2030/31	10	40	1,011	1035	1,038	1,047	1,054	1020	892	834	794	880	852	794	659	11,960	1,408	13.3%

Yellow box = largest grade per year
Green box = second largest grade per year



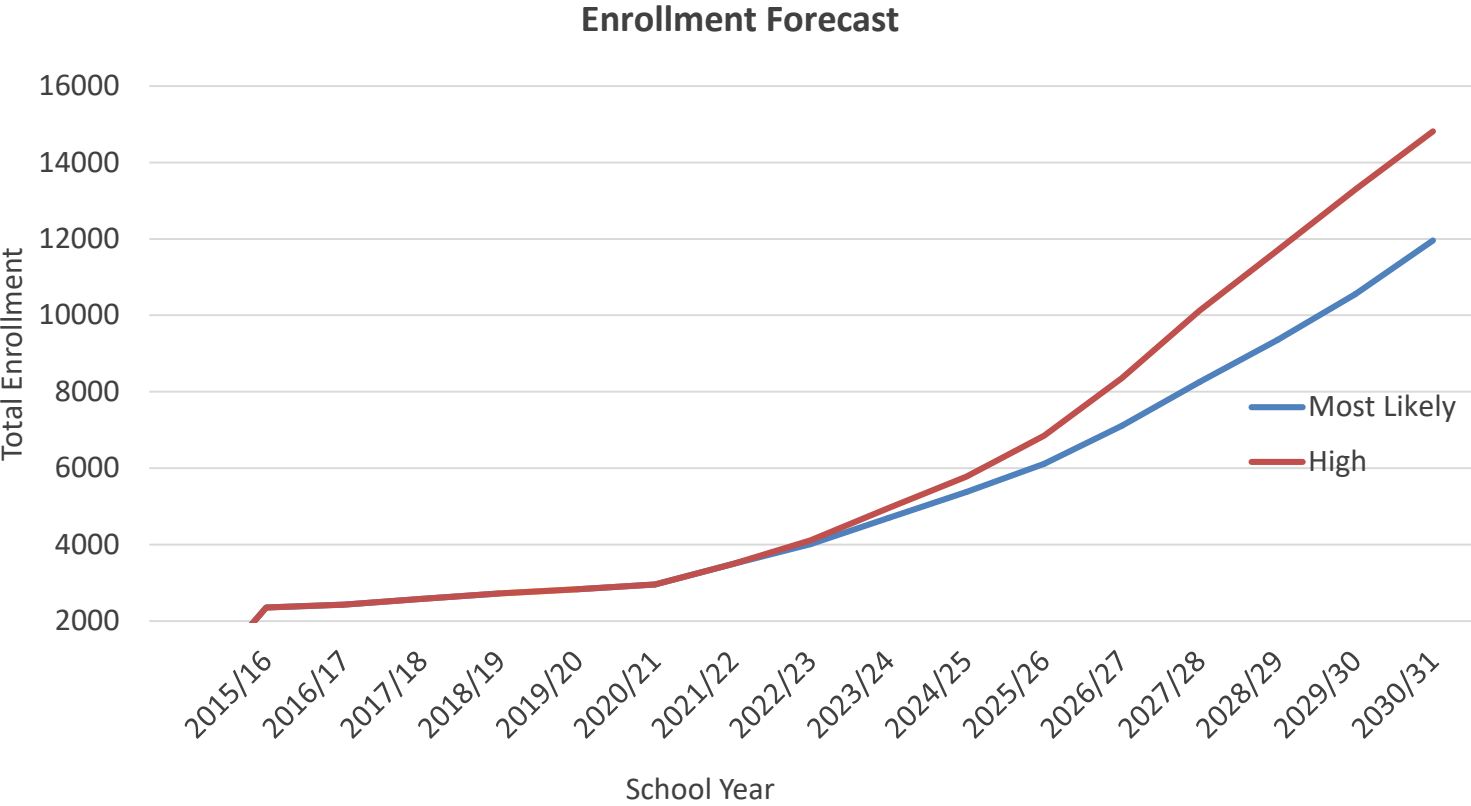
Ten Year Forecast by Campus Level

			Fall	ENROLLMENT PROJECTIONS									
Campus	Capacity	2019/20	2020/21	2021/22	2022/23	2023/24	2024/25	2025/26	2026/27	2027/28	2028/29	2029/30	2030/31
CELINA PRIMARY SCHOOL	400	261	240	316	343	402	472	556	657	748	850	969	1,061
LYKINS ELEMENTARY SCHOOL	750	559	559	652	732	811	902	1,025	1,180	1,382	1,615	1,897	2,213
O'DELL ELEMENTARY SCHOOL	750	493	546	723	845	1,000	1,160	1,308	1,540	1,798	2,140	2,524	2,981
ELEMENTARY TOTAL	1,900	1,313	1,345	1,691	1,920	2,213	2,534	2,889	3,377	3,928	4,605	5,390	6,255
Elementary Absolute Change		77	32	346	229	293	321	355	488	551	677	785	865
Elementary Percent Change		6.23%	2.44%	25.72%	13.54%	15.26%	14.51%	14.01%	16.89%	16.32%	17.24%	17.05%	16.05%
CELINA 6TH GRADE CENTER	400	206	227	278	360	393	441	489	566	672	672	779	892
INTERMEDIATE SCHOOL TOTAL	400	206	227	278	360	393	441	489	566	672	672	779	892
Intermediate Absolute Change		206	21	51	82	33	48	48	77	106	0	107	113
Intermediate Percent Change			10.19%	22.47%	29.50%	9.17%	12.21%	10.88%	15.75%	18.73%	0.00%	15.92%	14.51%
CELINA JUNIOR HIGH SCHOOL	985	462	472	549	662	868	970	986	1,180	1,383	1,486	1,533	1,628
JUNIOR HIGH TOTAL	985	462	472	549	662	868	970	986	1,180	1,383	1,486	1,533	1,628
Junior High Absolute Change		-180	10	77	113	206	102	16	194	203	103	47	95
Junior High Percent Change		-28.04%	2.16%	16.31%	20.58%	31.12%	11.75%	1.65%	19.68%	17.20%	7.45%	3.16%	6.20%
CELINA HIGH SCHOOL	1,500	849	914	976	1,069	1,225	1,432	1,749	1,985	2,274	2,588	2,848	3,183
HIGH SCHOOL TOTAL	1,500	849	914	976	1,069	1,225	1,432	1,749	1,985	2,274	2,588	2,848	3,183
High School Absolute Change		5	65	62	93	156	207	317	236	289	314	260	335
High School Percent Change		0.59%	7.66%	6.78%	9.53%	14.59%	16.90%	22.14%	13.49%	14.56%	13.81%	10.05%	11.76%
COLLIN COUNTY JJAEP		2	2	2	2	2	2	2	2	2	2	2	2
DISTRICT TOTALS	4,785	2,832	2,960	3,496	4,013	4,701	5,379	6,115	7,110	8,259	9,353	10,552	11,960
District Absolute Change		108	128	536	517	688	678	736	995	1,149	1,094	1,199	1,408
District Percent Change		3.96%	4.52%	18.11%	14.79%	17.14%	14.42%	13.68%	16.27%	16.16%	13.25%	12.82%	13.34%

Yellow box = over capacity



Key Takeaways



- Celina ISD enrollment has grown nearly 5% from 2019/20
- CISD saw the highest number of 1st quarter new home starts and closings in over 5 years
- There are nearly 1,900 available lots to build on across the district, with an additional nearly 22,400 future lots planned
- Celina ISD is expected to enroll over 6,100 students by 2025-26 and nearly 12,000 students by 2030-31