

CM201-U

Safety & Security Updates July 2025

What to do?
When to do it?
Who is in charge?
How do we debrief?
Where do we recover?
Drill – Rehearse – Drill

Presented by
Robin Tobias



UPGRADES

- Security Cameras
- Maps
- Go-Bags
- ICS Bags
- Reunification Kits
- Evolv
- Trainings
- Tabletop Kits



WE CAN BE SAFER

- **Emergency Plans & Response Resources**
 - Crisis Management Guide (CMG)
 - EOP, COP, Quick Reference Guide
- **ALICE**
 - Options Based Responses
- **Threat Assessment**
 - Teams & Case/Behavior Management
- **Incident Command System (ICS)**
 - Leadership & Chain of Command
- **Reunification**
 - Accountability & Recovery
- **First Responder Partnerships**
 - SRO Goals & Activities



Emergency Plans & Responses






Crisis Management Guide Reference & Informational Resources Communication Process & Protocols Alert Letter Process Drills & Response Actions Green / Yellow / Red Alerts Clerical Support	911 or Non-Emergency Superintendent, Cabinet, Board Safety & Security Office Staff, Students, Parents Tech Access & Readiness
---	---

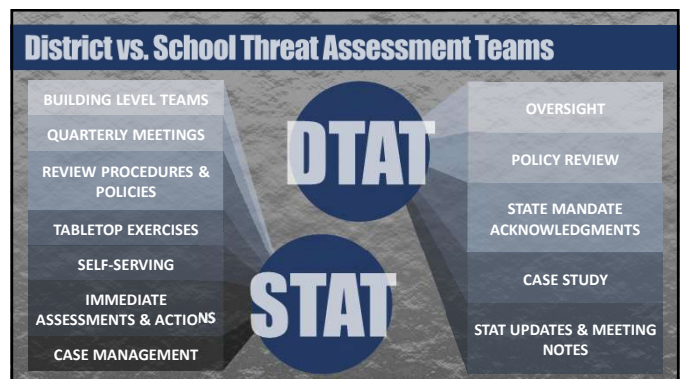
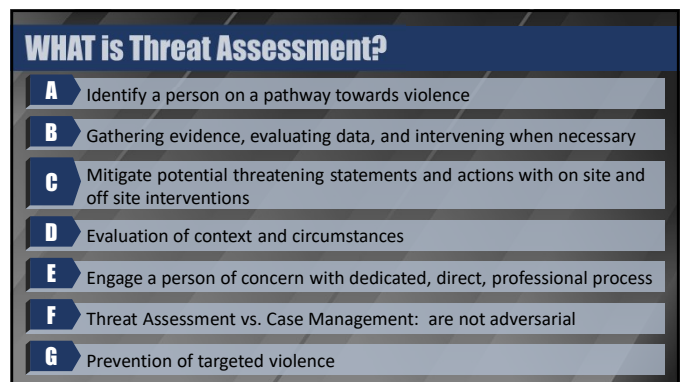
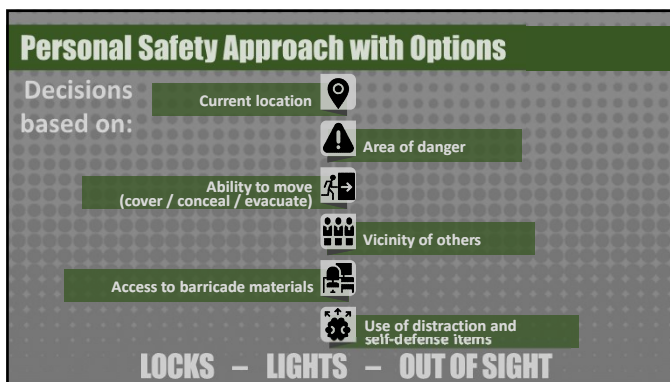
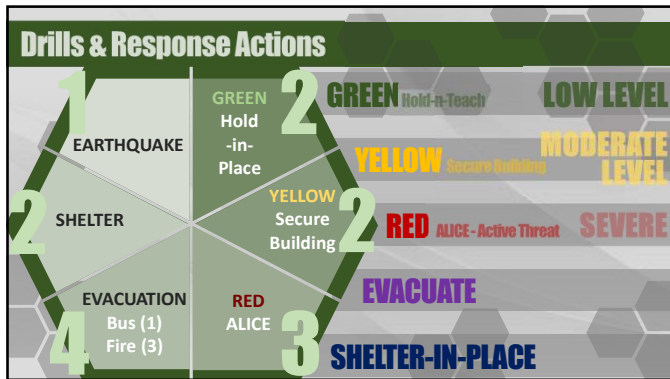
AREAS of CONCENTRATION

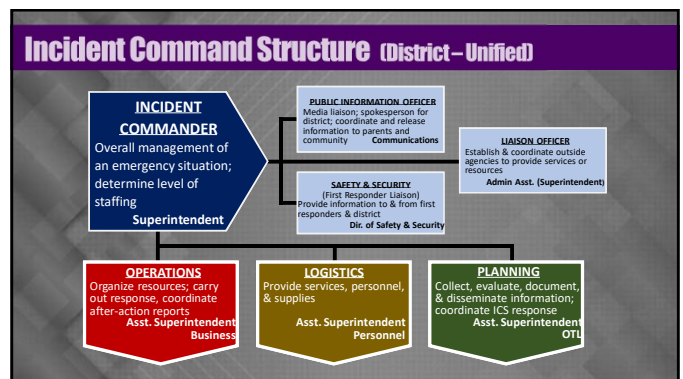
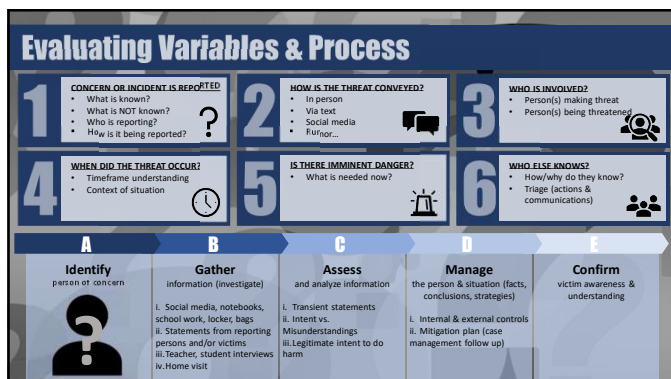
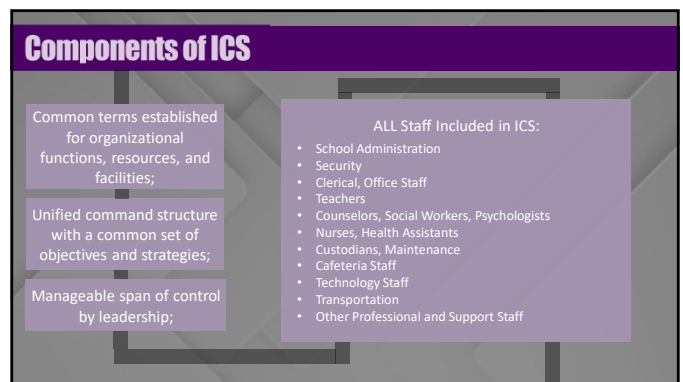
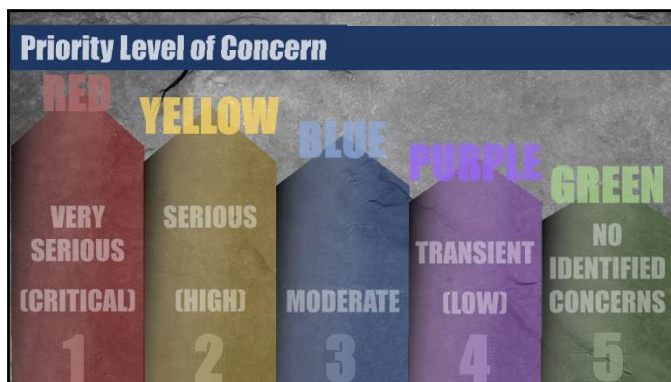
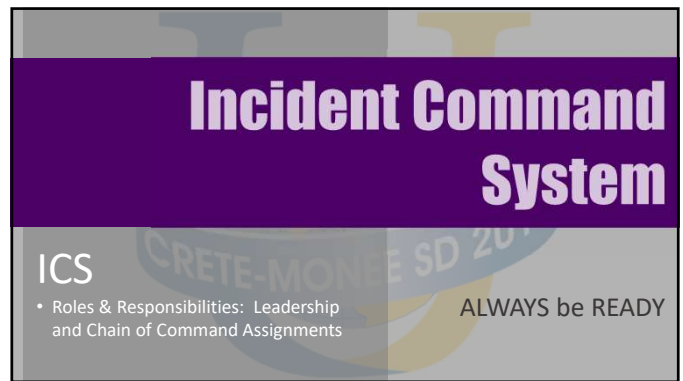
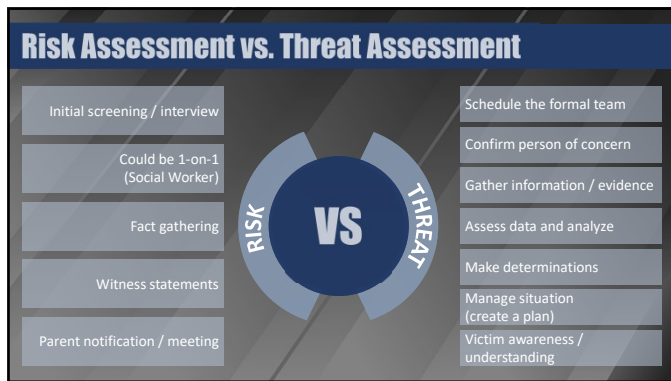
- Understanding an emergency event
- Determining the level of an emergency
- Communication protocols
- Managing the moment
- Managing the crisis
- Rehearsals and drills
- Roles and responsibilities

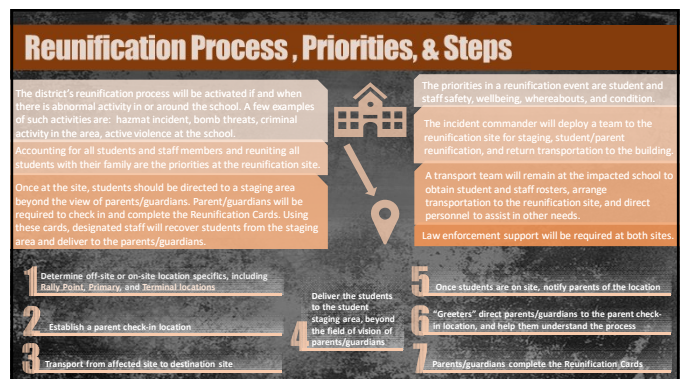
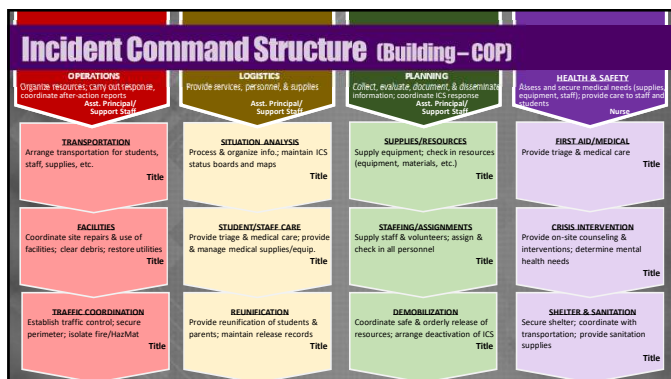
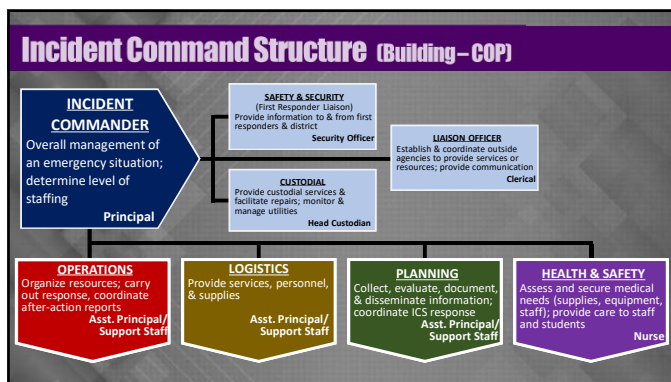
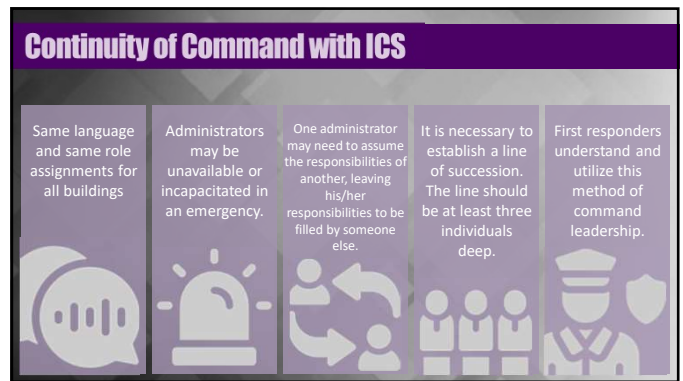
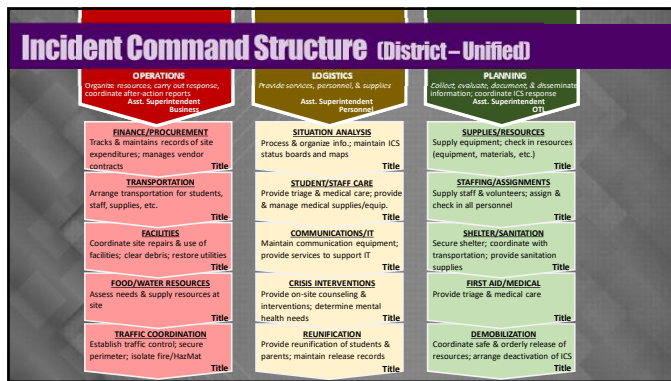


Reference & Instructional Resources

EOP	Emergency Operations Plan	<ul style="list-style-type: none"> • District level protocols and procedures • Unified operations • Multiagency response needs and communications 	
COP	Crises Operation Plan	<ul style="list-style-type: none"> • Building level protocols and procedures • Community specific locations and resources • Site control and responsibilities 	
QRG	Quick Reference Guide		
Maps	Maps & Site References		
ERM	Emergency Response Manual		









First Responder Partnerships

Planning
Drills & Rehearsals
Tabletops & Scenarios
Emergency Response & Management
Fire – Police – EMS – Local & County

Emergency Management - POST

- **PRIORITIES**
 - Student and staff safety and wellbeing
 - Student and staff whereabouts and condition
 - Starting the recovery process
- **OBJECTIVES**
 - Every student has been accounted for
 - Every staff member has been accounted for
 - Every student still in the school's control is reunited with their family
- **STRATEGIES**
 - The Standard ICS, Standard Response Practices, Standard Reunification Method
- **TACTICS**
 - Tactics will vary based on the event and the environment



School Resource Officer: The Triad Model

Carefully
Selected



Specifically
Trained

Properly Equipped

THANK YOU

Questions Comments

Emphasis on Resource & Response

Police Officer

- ▶ Constitutional & State Law
- ▶ Armed Response
- ▶ Crime Prevention & Mitigation
- ▶ Juvenile Advocacy



Public Safety Educator

- ▶ School & Community Safety
- ▶ Laws Pertaining to Students
- ▶ Environment & Facility Safety
- ▶ Social Media Awareness & Education

Informal Mentor/Counselor

- ▶ Decision Making
- ▶ Crime Prevention
- ▶ Empowering Youth & Wellness
- ▶ Supporting Social & Emotional Development