

June 16, 2025

Superintendent's Report



Summer Updates

- Leadership Planning for 25-26
- Capital Projects
- Curriculum Development
- Staffing and Hiring
- Opening Day





Intergovernmental Collaboration



More Partners,
More Issues,
More
Collaboration

Cities, Villages,
Municipalities

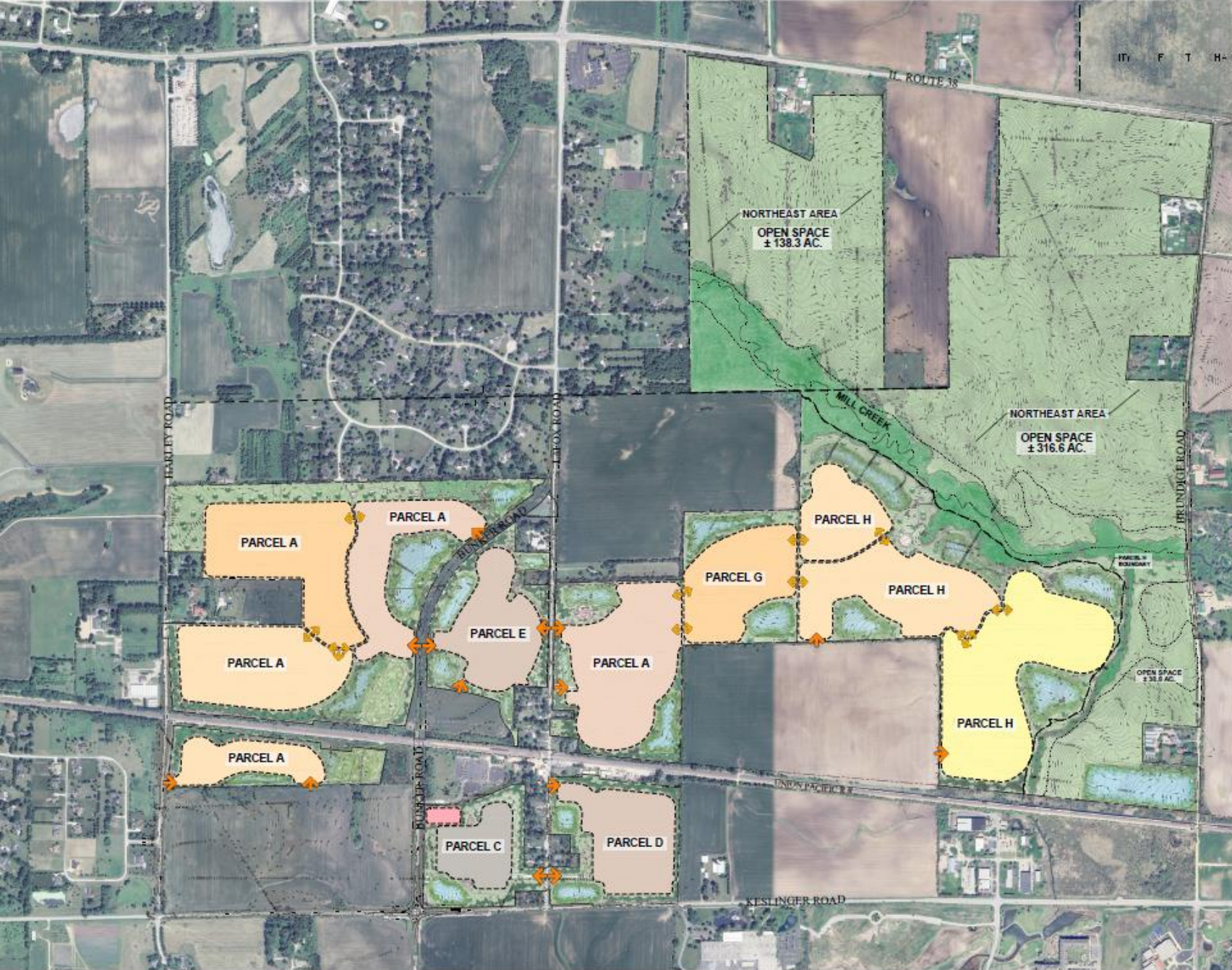
Local and
Neighboring
Taxing Bodies

Neighboring
Districts



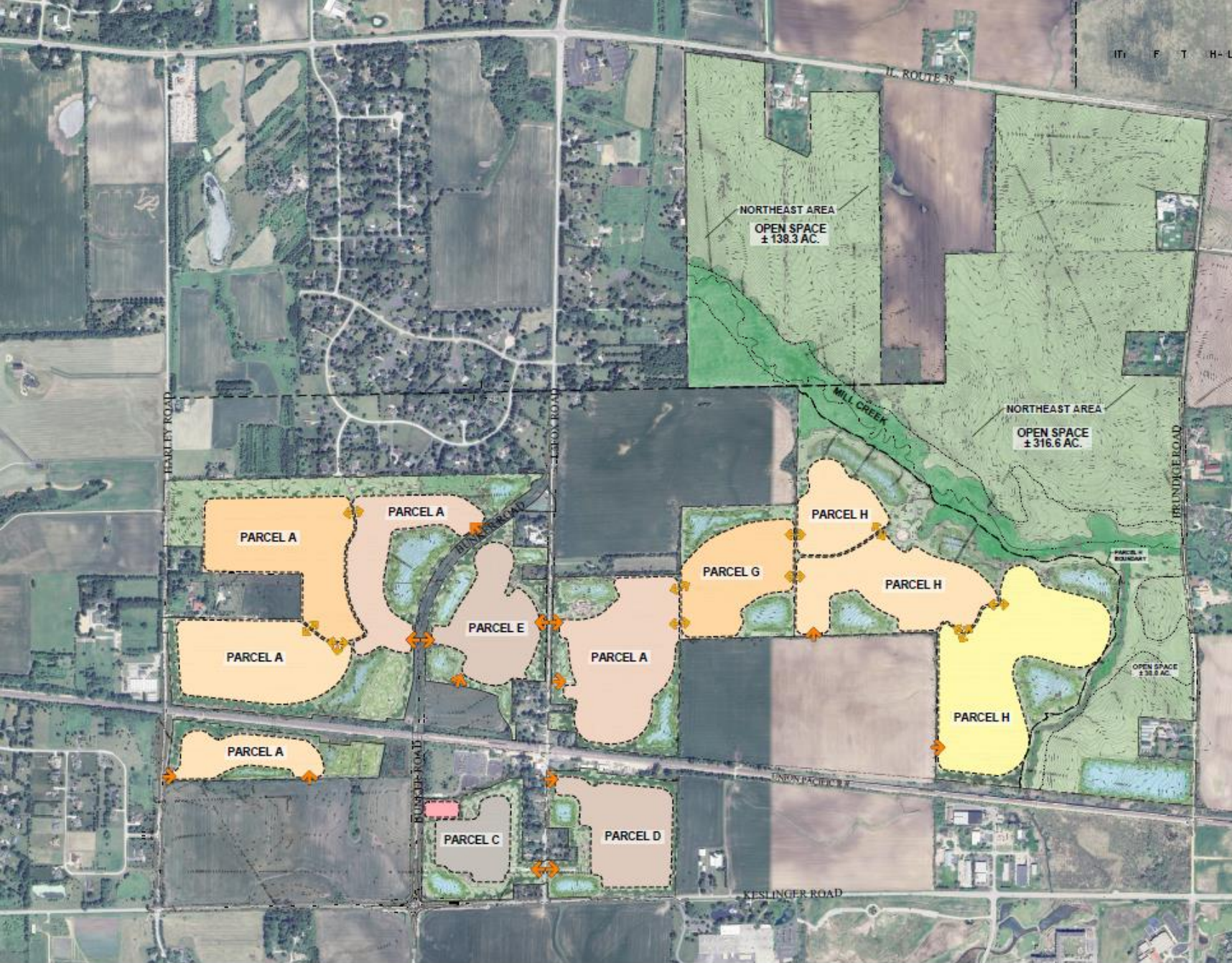
Potential Residential Development





Potential Residential Development

- Same Property as Settlements of La Fox and Charles Farm
- Proposed Annexation by the Village of Campton Hills
- Lower Density than previous proposals



Key Points

- ≈900 Total Units
- ≈700 Single Family
- D 304 Only
- 30-40 Residences/Year
- 15-20 Year Timeline
- First Units Anticipated 2027
- Dedicated Green Space
- Access from the West
- Ongoing Discussions with Village and Developer

**Additional Development on the Horizon



All



Together now

