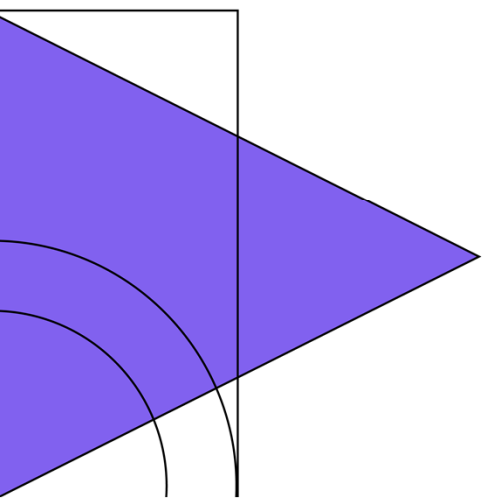
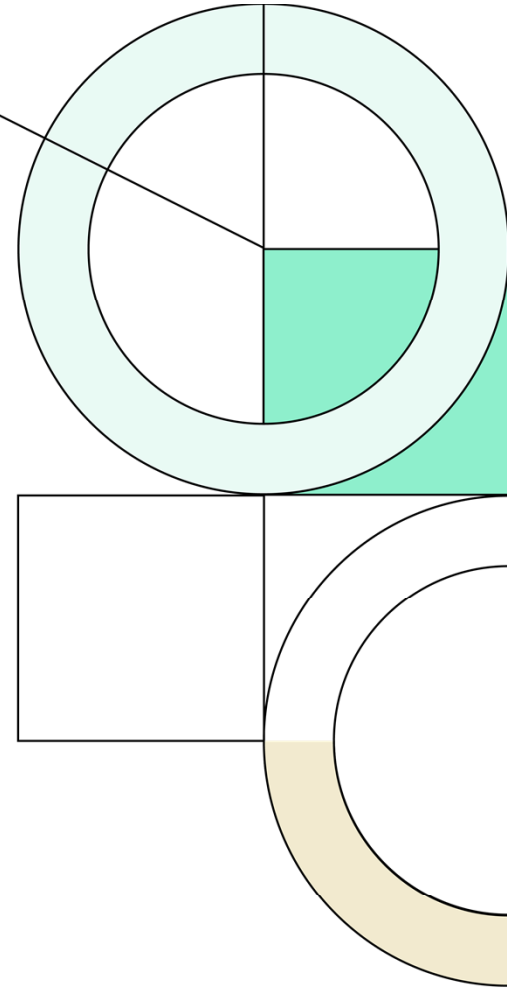




Lewisville
Independent
School
District

3Q24

Demographic Report





Annual Enrollment Change

Year (OCT)	EE	PK	K	1st	2nd	3rd	4th	5th	6th	7th	8th	9th	10th	11th	12th	Totals	Total Growth	% Growth
2020/21	233	926	2,939	3,345	3,227	3,332	3,422	3,474	3,732	3,850	3,943	4,252	4,353	4,178	4,204	49,410		
2021/22	0	1,239	3,148	3,219	3,357	3,321	3,343	3,422	3,591	3,764	3,905	4,311	4,183	4,156	4,122	49,081	-329	-0.7%
2022/23	196	1,187	3,106	3,295	3,306	3,419	3,414	3,386	3,569	3,650	3,804	4,224	4,117	4,002	4,013	48,688	-393	-0.8%
2023/24	156	1,219	3,070	3,225	3,337	3,347	3,528	3,390	3,440	3,621	3,688	4,085	4,139	4,044	4,067	48,356	-332	-0.7%
2024/25	0	1,382	2,896	3,170	3,251	3,407	3,359	3,557	3,478	3,522	3,698	3,995	4,093	3,989	4,015	47,812	-544	-1.1%

*Yellow Box = largest grade per year
Green Box = second largest grade per year

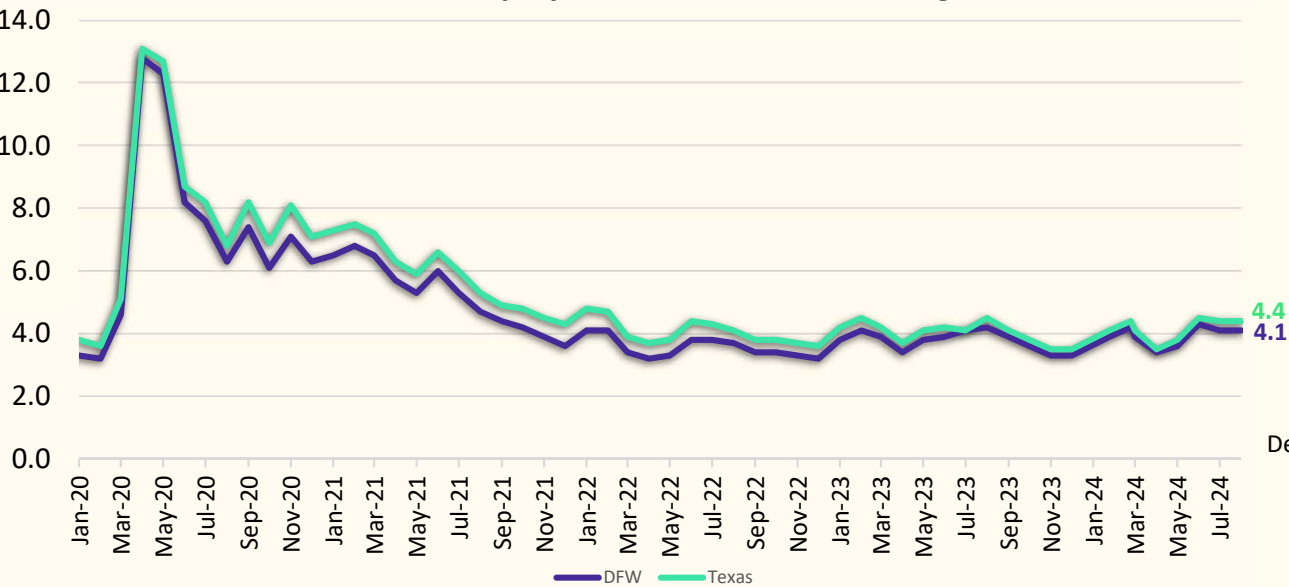
2024/25	156	1,147	3,053	3,164	3,255	3,367	3,388	3,537	3,439	3,480	3,658	3,966	4,002	4,018	3,990	47,620		
	-156	235	-157	6	-4	40	-29	20	39	42	40	29	91	-29	25	192		
		17.0%	-5.4%	0.2%	-0.1%	1.2%	-0.9%	0.6%	1.1%	1.2%	1.1%	0.7%	2.2%	-0.7%	0.6%	0.4%		

	PK	K	1st	2nd	3rd	4th	5th	6th	7th	8th	9th	10th	11th	12th	Elem	MS	HS
3 Year Avg.	1.040	1.015	1.060	1.014	1.020	1.021	1.002	1.031	1.013	1.012	1.083	0.973	0.965	0.989	1.012	1.020	1.004
2021/22	1.338	1.071	1.095	1.004	1.029	1.003	1.000	1.034	1.009	1.014	1.093	0.984	0.955	0.987	1.034	1.019	1.005
2022/23	0.958	0.987	1.047	1.027	1.018	1.028	1.013	1.043	1.016	1.011	1.082	0.955	0.957	0.966	1.020	1.023	0.990
2023/24	1.027	0.988	1.038	1.013	1.012	1.032	0.993	1.016	1.015	1.010	1.074	0.980	0.982	1.016	1.013	1.014	1.013
2024/25	1.133	0.943	1.033	1.008	1.021	1.004	1.008	1.026	1.024	1.021	1.083	1.002	0.964	0.993	1.003	1.024	1.010

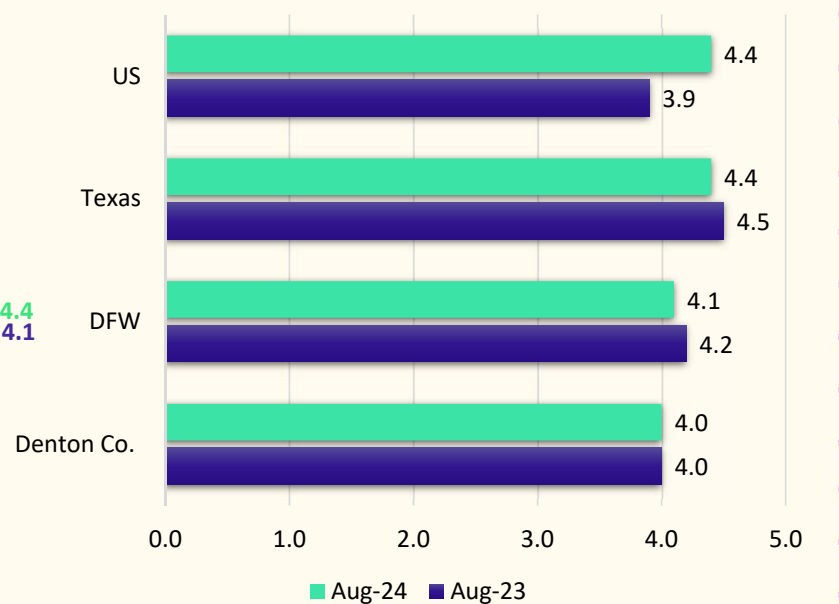


Local Economic Conditions

Unemployment Rate, Jan. 2020 - August 2024



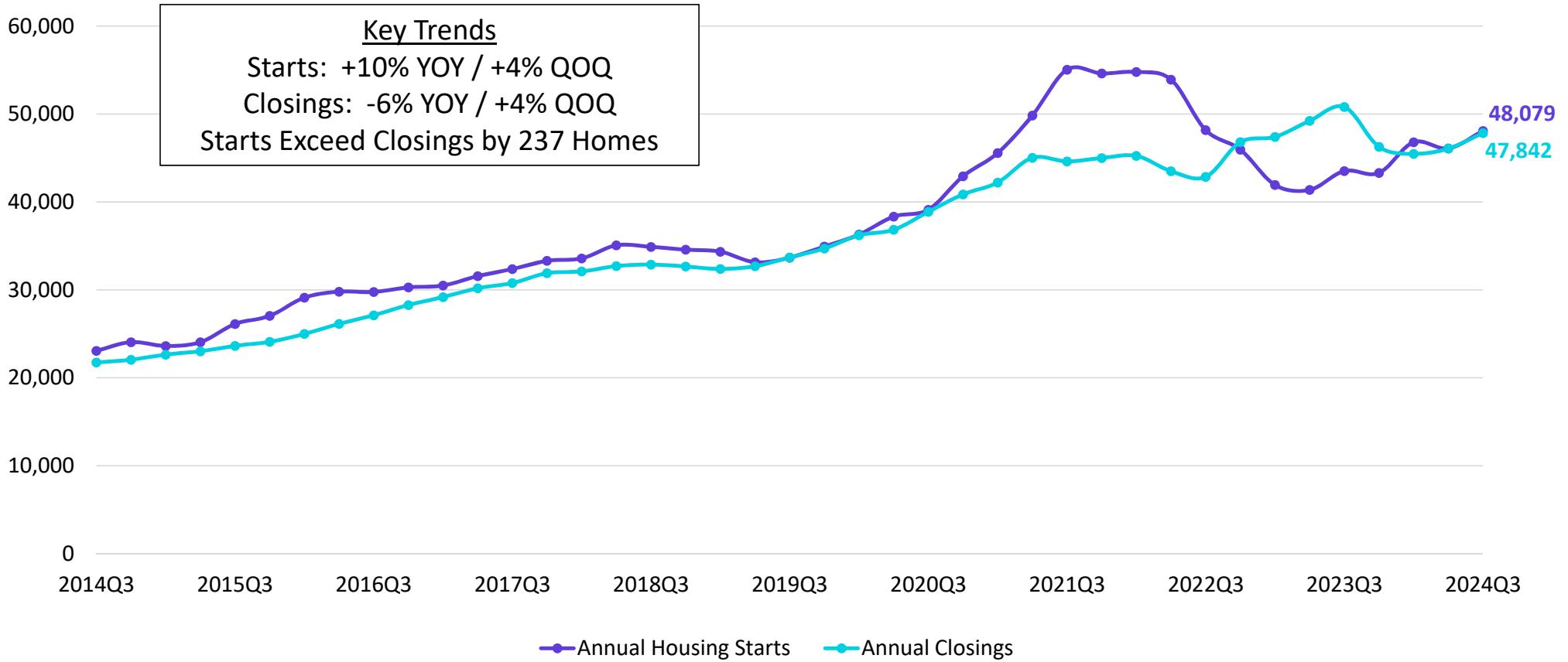
Unemployment Rate, Year over Year





DFW New Home Starts & Closings

Annual Housing Starts vs. Annual Closings



Source: Zonda



DFW New Home Ranking Report

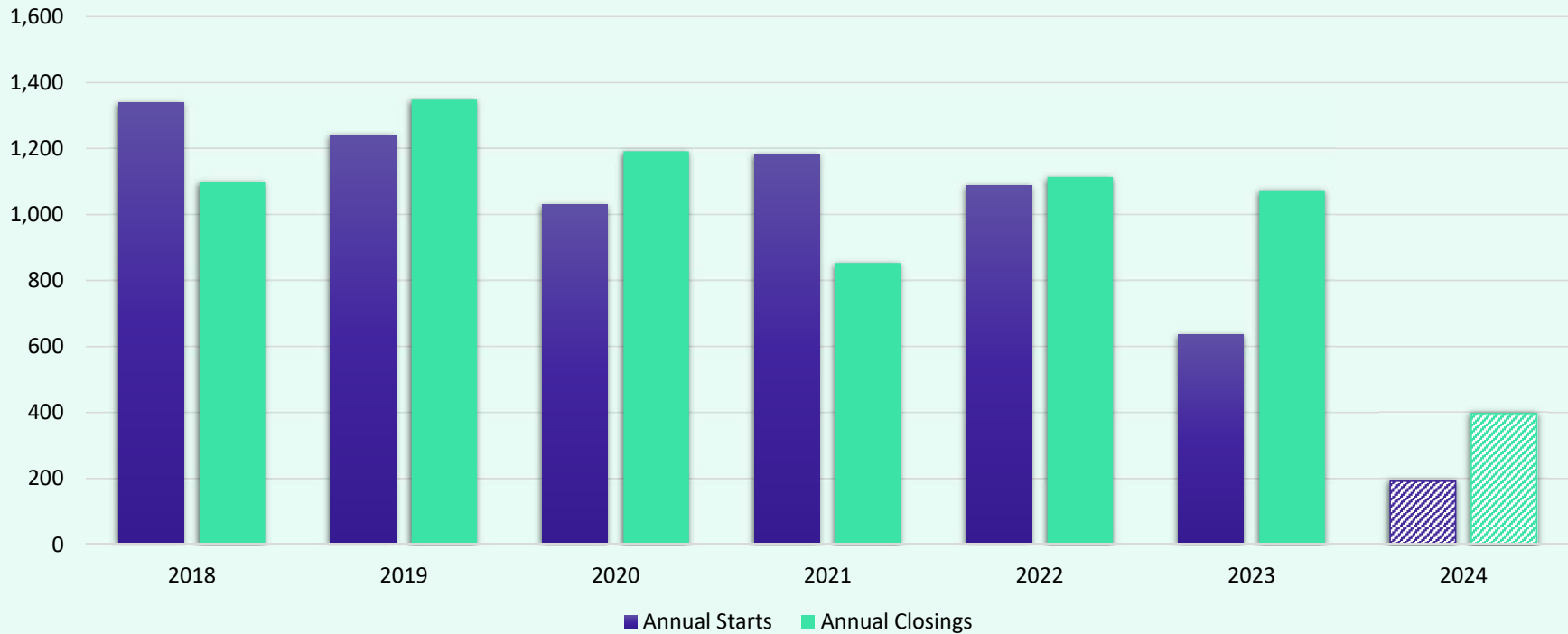
ISD Ranked by Annual Closings – 3Q24

Rank	District Name	Annual Starts	Annual Closings	Inventory	VDL	Future
1	PROSPER ISD	2,854	3,490	1,498	2,693	10,698
2	NORTHWEST ISD	2,877	3,124	1,711	4,005	40,279
3	PRINCETON ISD	3,123	2,725	1,529	3,572	8,099
4	DENTON ISD	2,434	2,546	1,323	2,716	25,427
5	MCKINNEY ISD	2,565	2,127	1,328	2,640	10,475
6	FORNEY ISD	2,016	2,086	1,029	4,078	22,792
7	EAGLE MT-SAGINAW ISD	1,413	1,848	661	1,753	12,629
8	COMMUNITY ISD	1,666	1,389	873	2,791	7,322
9	MELISSA ISD	1,021	1,369	479	990	2,422
10	CRANDALL ISD	1,622	1,291	764	2,398	15,692
11	ROYSE CITY ISD	1,040	1,283	527	2,452	9,461
12	AUBREY ISD	1,225	1,282	477	1,167	5,797
13	DALLAS ISD	1,227	1,276	1,426	2,461	4,722
14	ANNA ISD	1,098	1,142	692	1,090	12,263
15	CROWLEY ISD	1,110	1,132	633	2,620	12,798
16	ROCKWALL ISD	1,273	1,118	835	2,808	8,515
17	CELINA ISD	1,474	1,114	1,038	4,051	36,498
18	FRISCO ISD	1,212	1,051	802	2,274	7,542
19	MIDLOTHIAN ISD	1,017	892	742	2,206	11,950
20	MANSFIELD ISD	777	839	555	2,039	5,513
21	GARLAND ISD	663	777	483	930	2,485
22	ARGYLE ISD	878	717	647	628	7,167
23	LEWISVILLE ISD	297	692	254	398	1,686*
24	WYLIE ISD	506	595	334	1,028	1,580
25	MESQUITE ISD	675	521	468	1277	3910

* Based on additional research by Zonda Education
 ** Totals **DO NOT** include age-restricted communities



District New Home Starts and Closings by Quarter



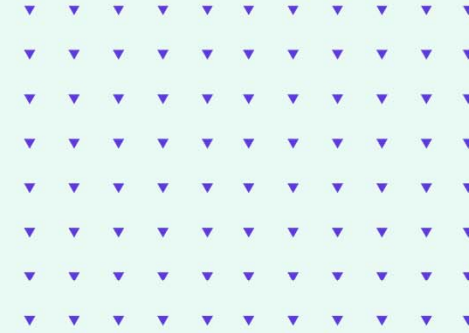
Starts	2018	2019	2020	2021	2022	2023	2024
1Q	252	317	267	254	263	244	53
2Q	366	273	280	319	346	224	100
3Q	483	372	245	359	274	64	39
4Q	239	280	239	252	206	105	
Total	1,340	1,242	1,031	1,184	1,089	637	192

Closings	2018	2019	2020	2021	2022	2023	2024
1Q	185	265	303	214	205	394	150
2Q	307	341	272	203	325	249	180
3Q	327	372	300	211	284	135	67
4Q	279	370	317	225	300	295	
Total	1,098	1,348	1,192	853	1,114	1,073	397



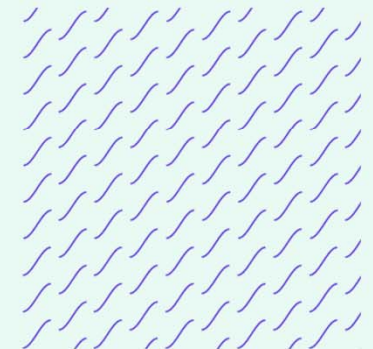
District Housing Overview by Elementary Zone

Elementary	Annual Starts	Quarter Starts	Annual Closings	Quarter Closings	Under Const.	Inventory	Vacant Dev. Lots	Future
BLUEBONNET	8	0	7	0	8	9	22	127
BRIDLEWOOD	0	0	1	0	0	0	2	0
CAMEY	0	0	8	1	0	1	0	0
CASTLE HILLS	5	0	8	0	14	17	19	0
DEGAN	0	0	30	4	0	12	4	0
ETHRIDGE	0	0	0	0	0	0	0	5
FLOWER MOUND	45	2	144	23	12	23	1	0
FOREST VISTA	0	0	0	0	0	0	0	54
HERITAGE	13	5	6	1	13	13	22	57
INDEPENDENCE	56	6	117	10	22	31	9	0
INDIAN CREEK	1	0	33	0	1	1	24	61
LAKELAND	0	0	0	0	0	0	0	52
LEWISVILLE	0	0	0	0	0	0	31	52
LIBERTY	0	0	16	0	2	3	10	335
MCAULIFFE	0	0	0	0	0	0	9	0
MEMORIAL	83	15	195	4	42	51	111	145
MILL STREET	4	4	0	0	4	4	0	8
MORNINGSIDE	28	0	56	1	5	12	0	74
OLD SETTLERS	5	1	4	1	4	4	3	4
OWEN	5	0	0	0	5	5	18	0
PRAIRIE TRAIL	0	0	0	0	0	0	0	141
ROCKBROOK	0	0	0	0	0	0	0	138
SOUTHRIDGE	22	1	28	5	16	24	9	0
TIMBER CREEK	0	0	0	0	0	0	0	15
TOM HICKS	8	5	33	13	14	29	95	186
VALLEY RIDGE	0	0	1	0	0	0	0	232
WELLINGTON	14	0	5	4	10	15	9	0
GRAND TOTAL	297	39	692	67	172	254	398	1,686



- Highest activity in the category
- Second highest activity in the category
- Third highest activity in the category

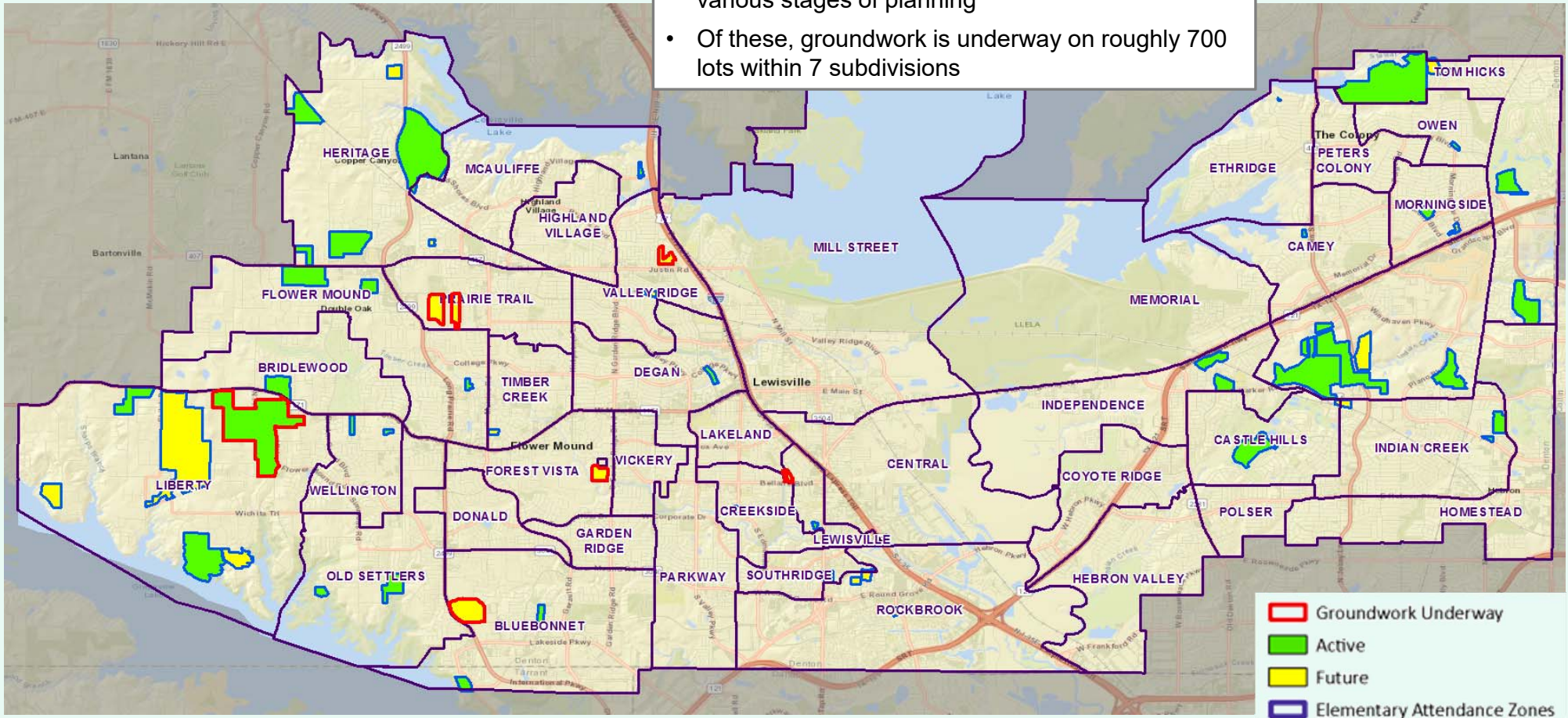
* Only Elementary zones with activity are shown





District Housing Overview

- The district has 40 actively building subdivisions
- Within LISD there are 23 future subdivisions in various stages of planning
- Of these, groundwork is underway on roughly 700 lots within 7 subdivisions





Residential Activity

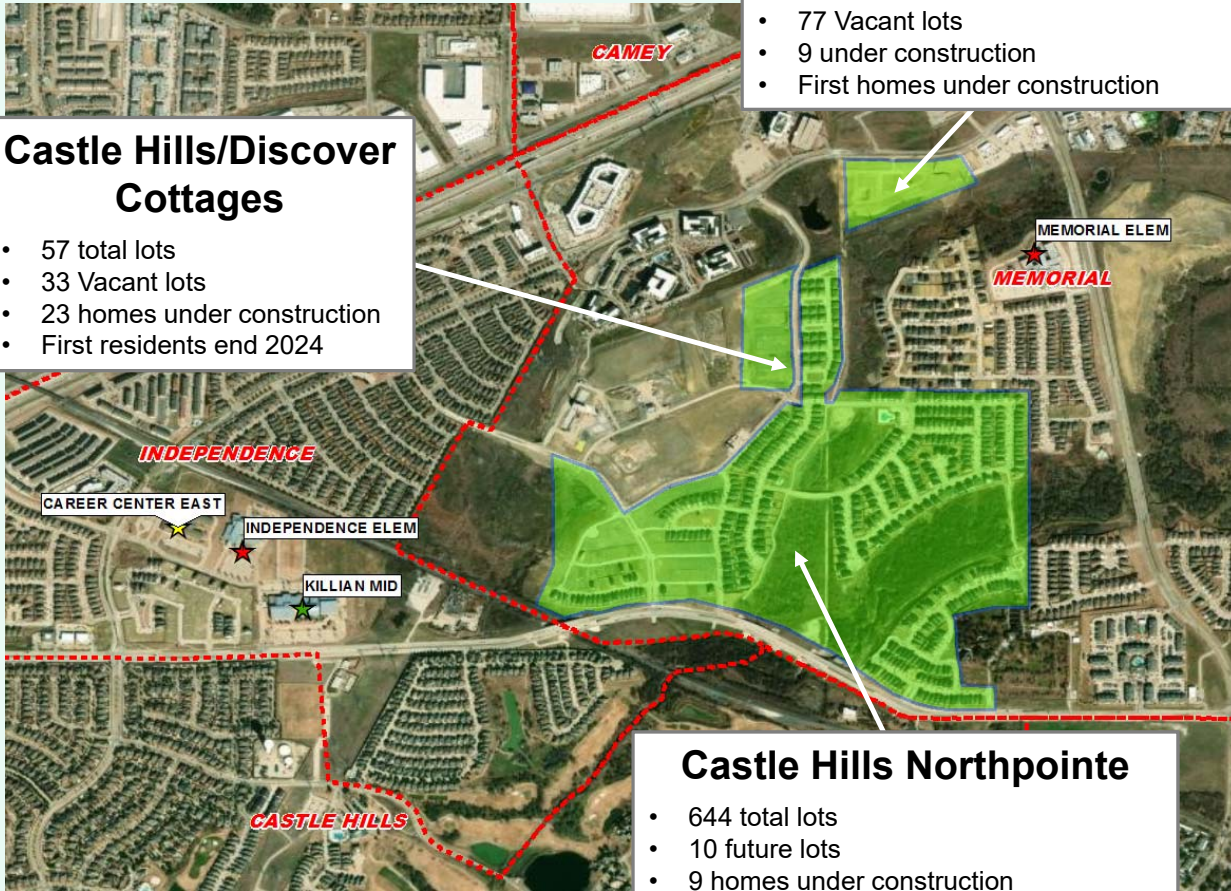
Castle Hills Windhaven Townhomes

- 86 total lots
- 77 Vacant lots
- 9 under construction
- First homes under construction

October 2024

Castle Hills/Discover Cottages

- 57 total lots
- 33 Vacant lots
- 23 homes under construction
- First residents end 2024



Castle Hills Northpointe

- 644 total lots
- 10 future lots
- 9 homes under construction
- 619 homes occupied
- Final homes in existing phases nearing completion
- Current Student Yield: 0.545

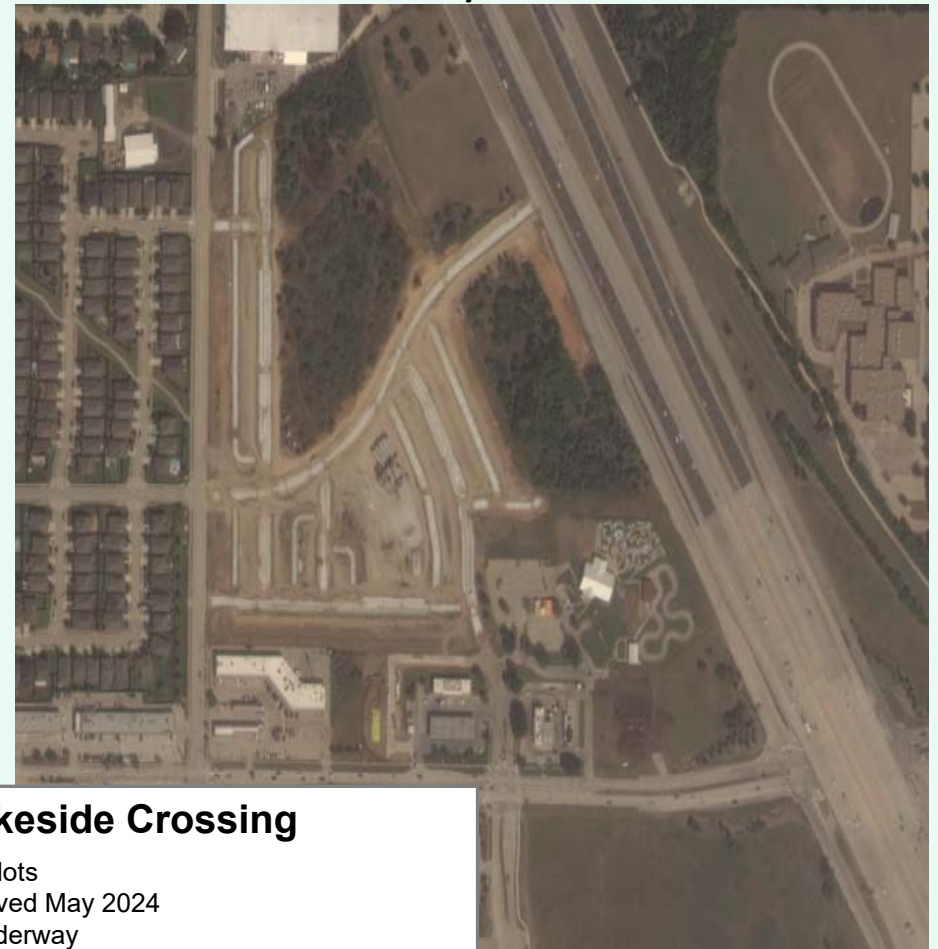
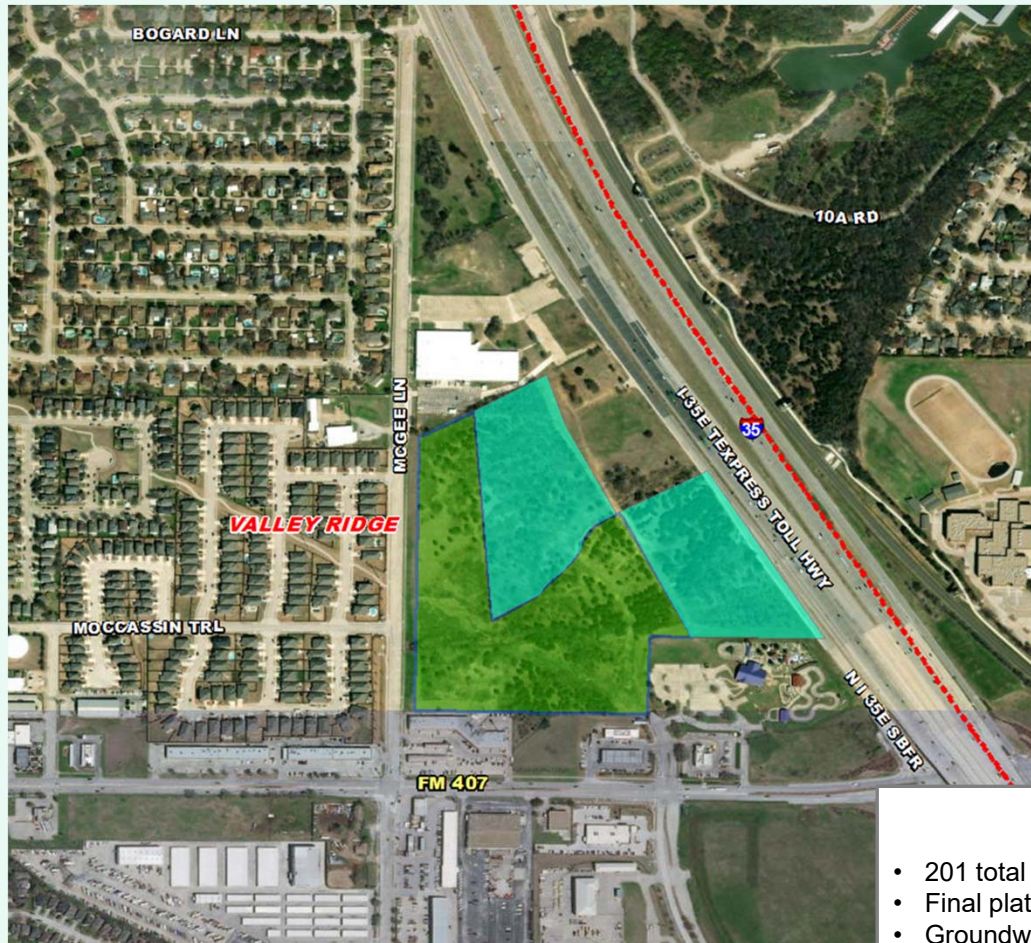




Residential Activity



September 2024



Lakeside Crossing

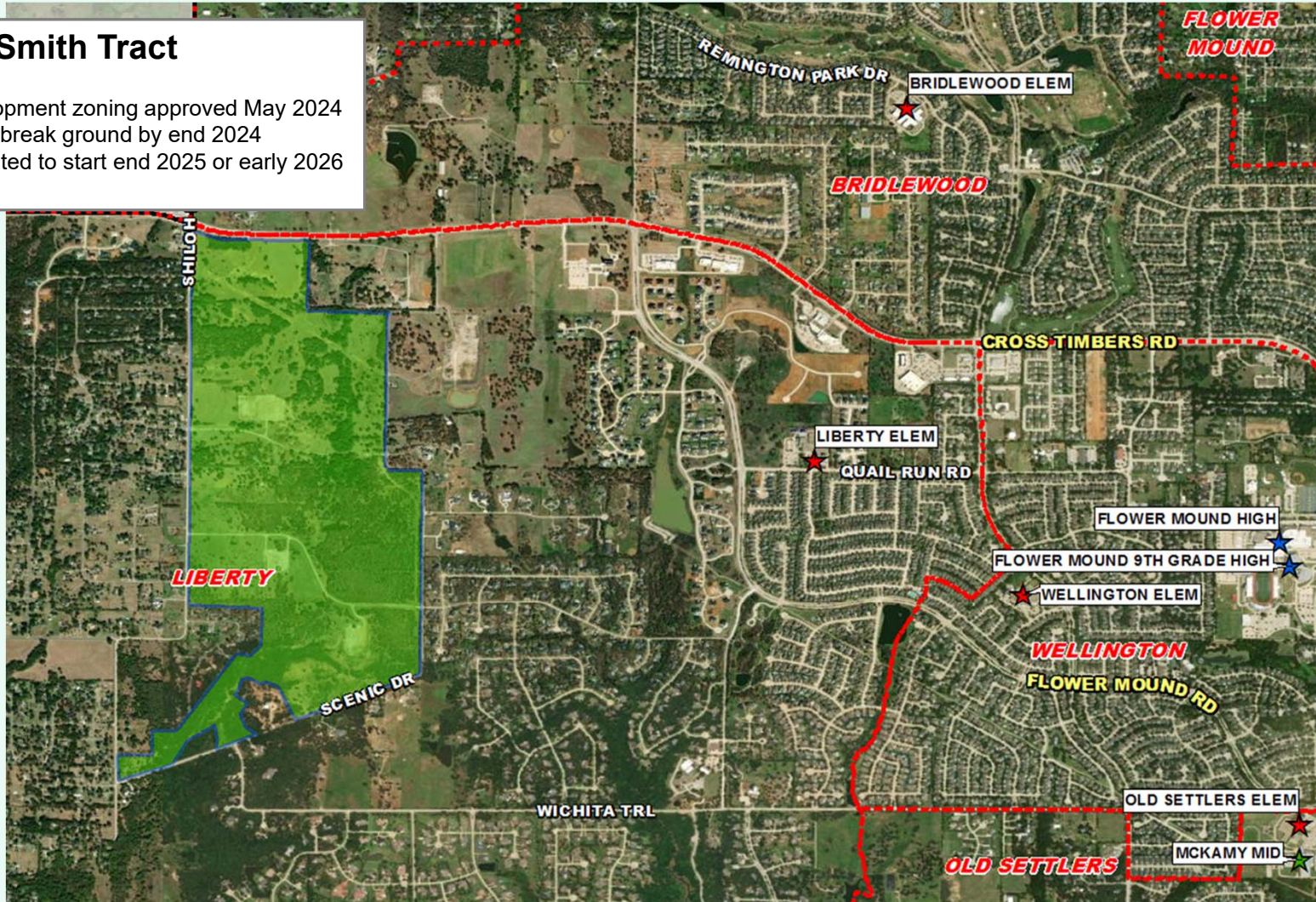
- 201 total future lots
- Final plat approved May 2024
- Groundwork underway
- Anticipate homes starting spring 2025
- Appx. 760 future multifamily units in planning stages



Residential Activity

Smith Tract

- 223 total future lots
- Conservation development zoning approved May 2024
- Developer hopes to break ground by end 2024
- First homes anticipated to start end 2025 or early 2026
- Toll Brothers



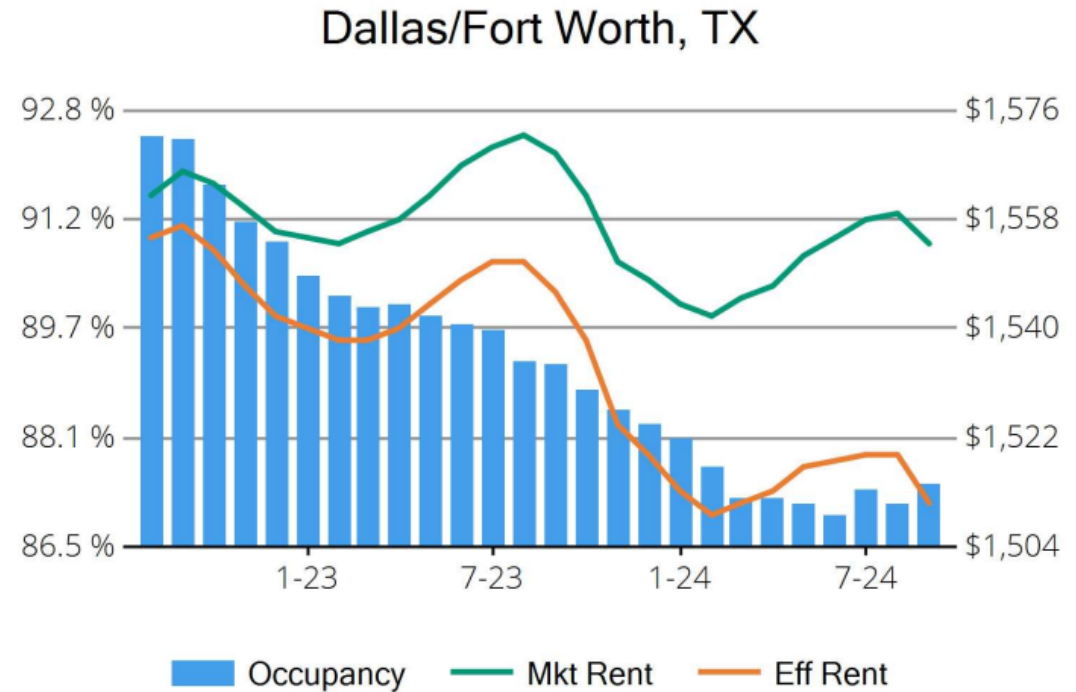


Housing Market Trends: Multi-family Market- September 2024



Stabilized and Lease-up Properties

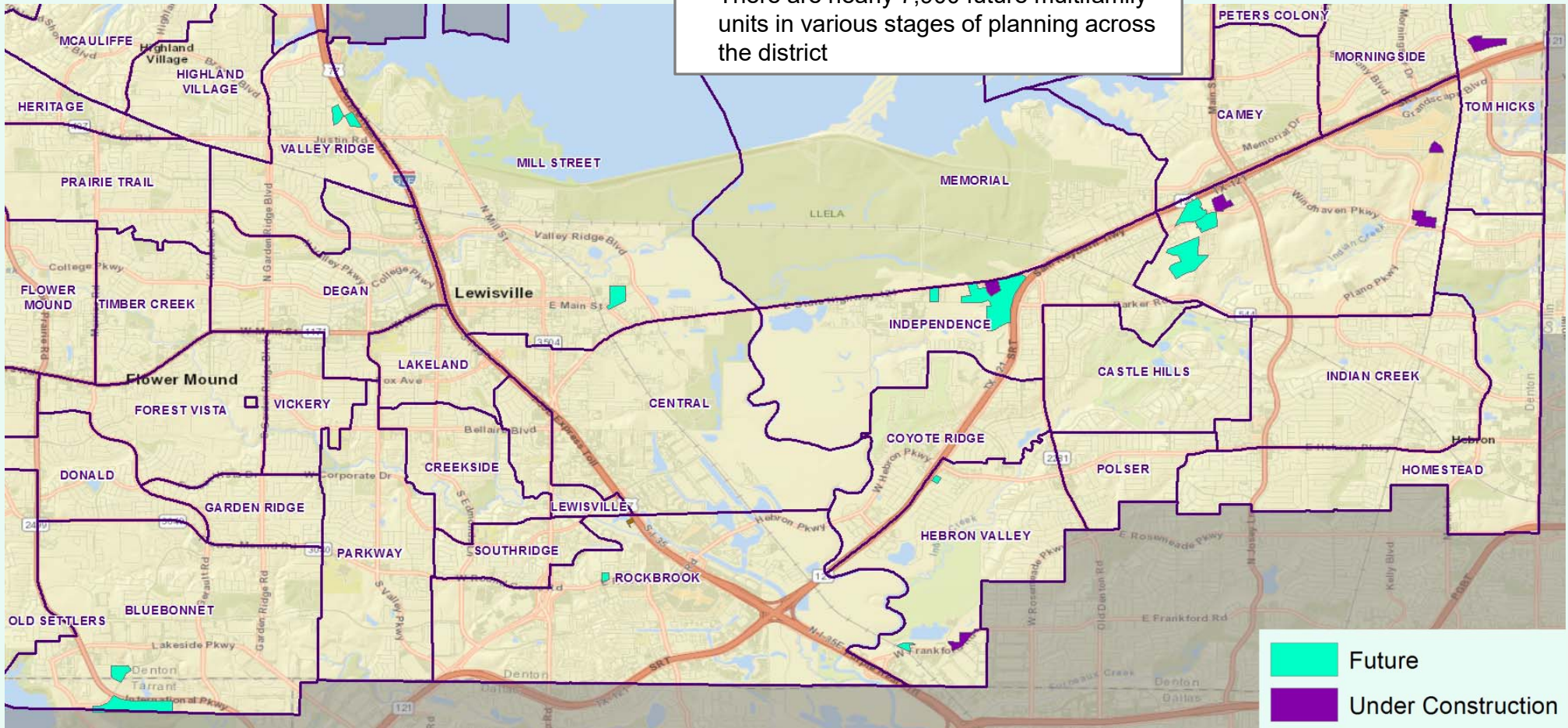
Conventional Properties	Sep 2024	Annual Change
Occupancy	87.4	-2.0%
Unit Change	37,217	
Units Absorbed (Annual)	18,083	
Average Size (SF)	879	+0.6%
Asking Rent	\$1,554	-0.9%
Asking Rent per SF	\$1.77	-1.4%
Effective Rent	\$1,511	-2.2%
Effective Rent per SF	\$1.72	-2.7%
% Offering Concessions	38%	+62.8%
Avg. Concession Package	6.7%	+25.3%





District Multifamily Overview

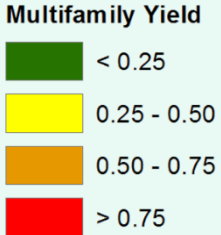
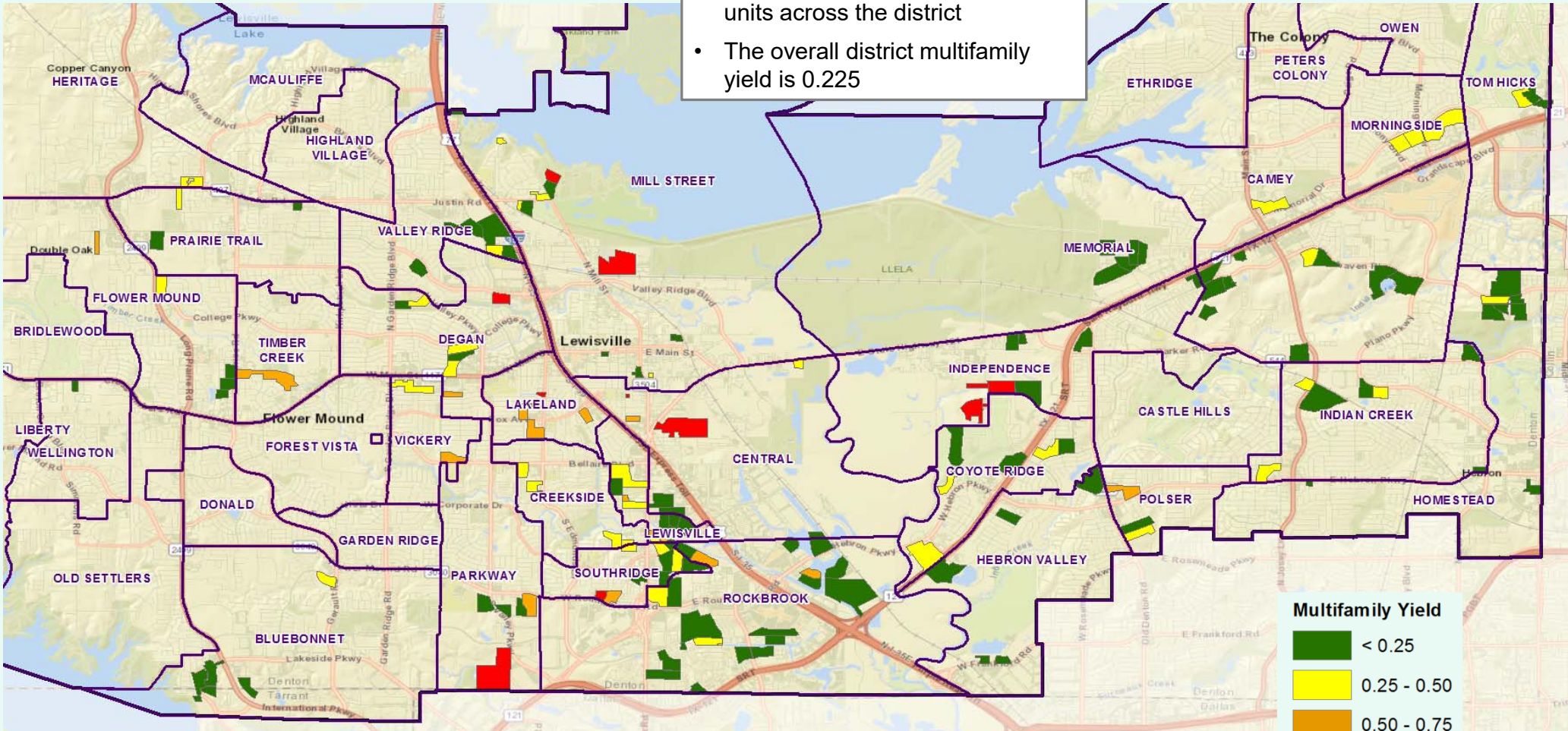
- There are more than 3,100 multifamily units under construction across the district
- There are nearly 7,900 future multifamily units in various stages of planning across the district





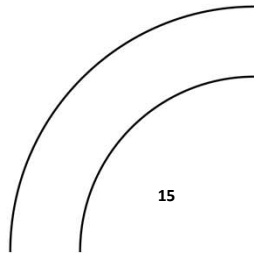
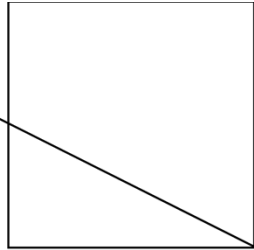
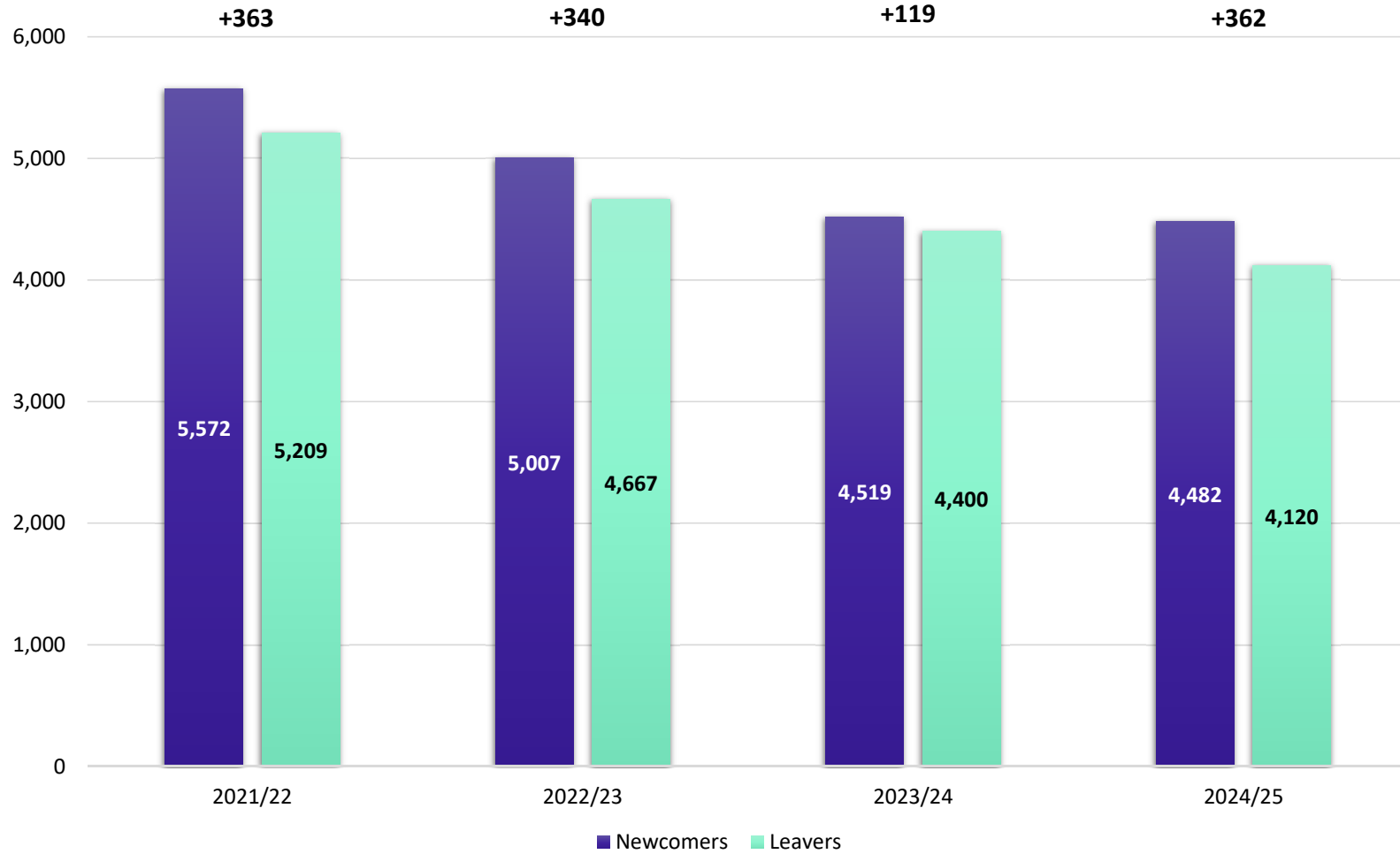
District Multifamily Yield

- There are 11,017 students residing in 48,855 multifamily units across the district
- The overall district multifamily yield is 0.225



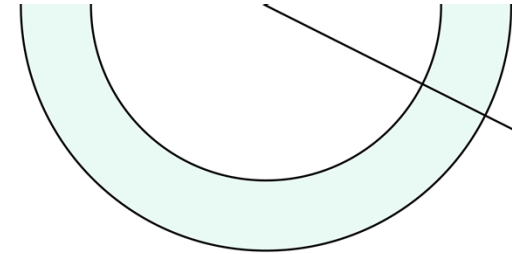


Newcomers and Leavers

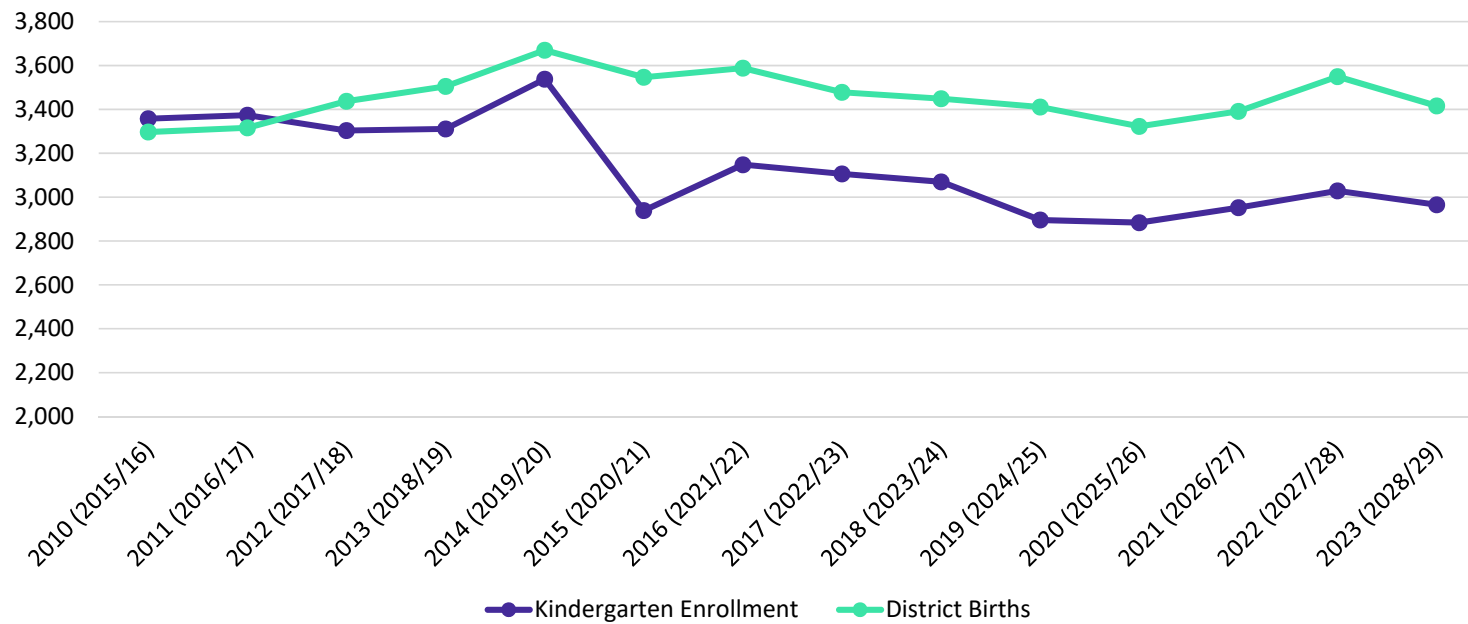




Birth Rate Analysis



Lewisville KG Enroll vs. District Births



	District Births	Kindergarten Enrollment	Ratio
2010 (2015/16)	3,297	3,358	1.019
2011 (2016/17)	3,316	3,374	1.017
2012 (2017/18)	3,437	3,304	0.961
2013 (2018/19)	3,505	3,311	0.945
2014 (2019/20)	3,670	3,538	0.964
2015 (2020/21)	3,547	2,939	0.829
2016 (2021/22)	3,588	3,148	0.877
2017 (2022/23)	3,478	3,106	0.893
2018 (2023/24)	3,449	3,070	0.890
2019 (2024/25)	3,411	2,896	0.849
2020 (2025/26)	3,323	2,884	0.868
2021 (2026/27)	3,391	2,952	0.871
2022 (2027/28)	3,550	3,029	0.853
2023 (2028/29)	3,416	2,965	0.868



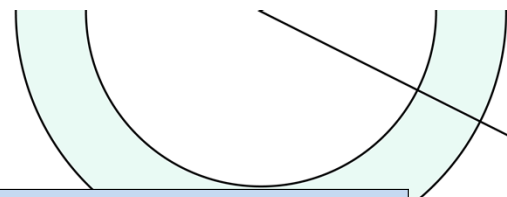
Ten Year Forecast by Grade Level

Year (OCT)	EE	PK	K	1st	2nd	3rd	4th	5th	6th	7th	8th	9th	10th	11th	12th	Totals	Total Growth	% Growth
2020/21	233	926	2,939	3,345	3,227	3,332	3,422	3,474	3,732	3,850	3,943	4,252	4,353	4,178	4,204	49,410		
2021/22	0	1,239	3,148	3,219	3,357	3,321	3,343	3,422	3,591	3,764	3,905	4,311	4,183	4,156	4,122	49,081	-329	-0.7%
2022/23	196	1,187	3,106	3,295	3,306	3,419	3,414	3,386	3,569	3,650	3,804	4,224	4,117	4,002	4,013	48,688	-393	-0.8%
2023/24	156	1,219	3,070	3,225	3,337	3,347	3,528	3,390	3,440	3,621	3,688	4,085	4,139	4,044	4,067	48,356	-332	-0.7%
2024/25	0	1,382	2,896	3,170	3,251	3,407	3,359	3,557	3,478	3,522	3,698	3,995	4,093	3,989	4,015	47,812	-544	-1.1%
2025/26	0	1,348	2,884	2,992	3,206	3,301	3,465	3,383	3,645	3,527	3,565	3,974	3,964	3,982	3,951	47,187	-625	-1.3%
2026/27	0	1,382	2,952	2,997	3,023	3,256	3,353	3,464	3,466	3,727	3,565	3,836	3,939	3,862	3,977	46,799	-388	-0.8%
2027/28	0	1,425	3,029	3,064	3,029	3,083	3,308	3,376	3,554	3,523	3,777	3,839	3,825	3,830	3,853	46,515	-284	-0.6%
2028/29	0	1,394	2,965	3,141	3,092	3,078	3,139	3,325	3,466	3,620	3,563	4,068	3,812	3,729	3,815	46,206	-309	-0.7%
2029/30	0	1,413	3,017	3,072	3,173	3,145	3,131	3,159	3,403	3,532	3,661	3,840	4,039	3,711	3,720	46,016	-191	-0.4%
2030/31	0	1,406	2,996	3,127	3,101	3,228	3,199	3,147	3,228	3,466	3,576	3,939	3,807	3,933	3,702	45,854	-161	-0.4%
2031/32	0	1,373	2,948	3,106	3,157	3,152	3,279	3,215	3,222	3,291	3,511	3,847	3,907	3,706	3,918	45,631	-223	-0.5%
2032/33	0	1,360	2,925	3,056	3,136	3,206	3,202	3,300	3,282	3,281	3,333	3,792	3,814	3,803	3,694	45,184	-448	-1.0%
2033/34	0	1,340	2,892	3,030	3,083	3,187	3,258	3,224	3,370	3,343	3,324	3,592	3,754	3,713	3,790	44,901	-283	-0.6%
2034/35	0	1,321	2,865	2,996	3,057	3,134	3,241	3,281	3,294	3,432	3,385	3,558	3,557	3,647	3,704	44,472	-429	-1.0%

Yellow box = largest grade per year
Green box = second largest grade per year



Ten Year Forecast by Elementary Campus



CAMPUS	2020 Maximum Capacity	Operational Capacity	HISTORY	FALL	ENROLLMENT PROJECTIONS									
			2023/24	2024/25	2025/26	2026/27	2027/28	2028/29	2029/30	2030/31	2031/32	2032/33	2033/34	2034/35
BLUEBONNET ELEMENTARY	748	680	673	664	645	649	636	617	605	605	602	600	603	606
BRIDLEWOOD ELEMENTARY	880	744	586	570	547	530	516	493	491	494	497	505	505	504
CAMEY ELEMENTARY	770	549	439	430	406	374	372	346	344	343	342	337	322	309
CASTLE HILLS ELEMENTARY	836	734	654	597	552	541	513	503	511	508	509	503	488	474
CENTRAL ELEMENTARY	836	632	543	587	559	558	547	550	553	557	553	540	524	510
COYOTE RIDGE ELEMENTARY	814	627	518	474	461	437	419	413	414	410	413	416	418	422
CREEKSIDE ELEMENTARY	660	541	383	376	342	339	336	336	350	355	357	354	345	334
DEGAN ELEMENTARY	726	539	402	392	381	376	391	387	383	391	389	382	372	360
DONALD ELEMENTARY	880	676	571	526	503	473	462	433	413	413	411	408	405	404
ETHRIDGE ELEMENTARY	506	387	343	326	326	318	325	335	362	369	373	374	363	353
FLOWER MOUND ELEMENTARY	836	700	569	519	483	448	427	402	387	395	403	410	413	417
FOREST VISTA ELEMENTARY	968	645	566	552	537	528	535	517	529	531	526	520	506	492
GARDEN RIDGE ELEMENTARY	594	424	346	327	317	315	307	319	332	337	342	345	341	338
HEBRON VALLEY ELEMENTARY	968	968	405	432	427	447	459	463	457	465	463	458	448	435
HERITAGE ELEMENTARY	1,012	825	504	474	465	453	437	431	416	427	432	436	435	434
HICKS ELEMENTARY	792	639	593	550	522	513	517	509	513	515	520	517	510	503
HIGHLAND VILLAGE ELEMENTARY	572	470	373	376	371	374	368	372	373	375	379	381	383	385
HOMESTEAD ELEMENTARY	726	573	458	470	470	485	487	491	507	505	506	503	496	490
INDEPENDENCE ELEMENTARY	990	837	823	824	830	835	836	817	828	831	830	831	834	844
INDIAN CREEK ELEMENTARY	814	627	540	491	494	507	505	504	511	508	504	499	495	494

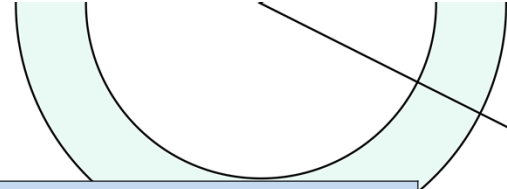


Ten Year Forecast by Elementary Campus

CAMPUS	2020 Maximum Capacity	Operational Capacity	HISTORY	FALL	ENROLLMENT PROJECTIONS									
			2023/24	2024/25	2025/26	2026/27	2027/28	2028/29	2029/30	2030/31	2031/32	2032/33	2033/34	2034/35
JACKSON EARLY ED. CENTER	900	810	439	430	430	430	430	430	430	430	430	430	430	430
LAKELAND ELEMENTARY	1,034	847	649	585	562	543	520	515	512	516	522	522	516	512
LEWISVILLE ELEMENTARY	858	671	491	507	494	510	503	509	524	529	536	536	530	523
LIBERTY ELEMENTARY	990	769	583	564	523	508	512	480	477	475	466	463	452	442
LLC ELEMENTARY SCHOOL		0	11	18	18	18	18	18	18	18	18	18	18	18
MCAULIFFE ELEMENTARY	726	573	524	508	496	492	484	483	490	488	491	493	497	501
MEMORIAL ELEMENTARY	968	900	730	745	808	857	906	943	926	939	956	967	968	968
MILL ST. ELEMENTARY	880	727	630	653	647	642	647	645	622	622	629	622	621	625
MORNINGSIDE ELEMENTARY	550	380	345	337	335	319	323	326	312	317	327	326	324	326
OLD SETTLERS ELEMENTARY	1,078	1,038	468	461	435	420	408	399	389	393	398	409	418	430
OWEN ELEMENTARY	704	534	262	280	307	326	347	369	407	423	428	436	446	455
PARKWAY ELEMENTARY	748	595	605	570	554	526	490	451	429	424	415	418	419	424
PETERS COLONY ELEMENTARY	814	644	559	620	614	646	688	703	724	737	726	718	700	678
POLSER ELEMENTARY	792	554	500	502	528	526	529	534	525	521	507	494	478	464
PRAIRIE TRAIL ELEMENTARY	968	747	652	665	671	692	691	696	708	711	712	704	694	691
ROCKBROOK ELEMENTARY	990	786	592	576	544	526	528	510	512	513	512	505	489	474
SOUTHRIDGE ELEMENTARY	836	649	613	689	700	675	666	672	657	645	642	630	626	630
TIMBER CREEK ELEMENTARY	682	512	437	406	402	384	372	372	374	387	396	409	420	429
VALLEY RIDGE ELEMENTARY	946	742	548	581	559	581	578	593	571	560	562	560	561	568
VICKERY ELEMENTARY	946	810	624	637	606	596	590	579	557	553	547	544	540	538
WELLINGTON ELEMENTARY	1,012	876	721	731	709	710	688	671	668	666	659	660	659	662
ELEMENTARY TOTALS	33,350	26,981	21,272	21,022	20,579	20,427	20,314	20,134	20,110	20,204	20,230	20,185	20,014	19,895
Elementary Total Change			-37	-250	-443	-153	-113	-180	-24	94	26	-45	-171	-120
Elementary Percent Change			-0.17%	-1.18%	-2.11%	-0.74%	-0.55%	-0.88%	-0.12%	0.47%	0.13%	-0.22%	-0.85%	-0.60%



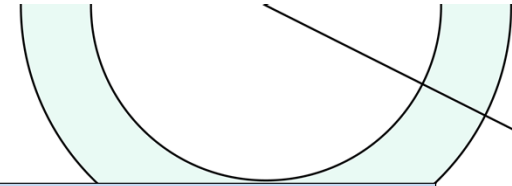
Ten Year Forecast by Middle School Campus



CAMPUS	2020 Maximum Capacity	Operational Capacity	HISTORY	FALL	ENROLLMENT PROJECTIONS									
			2023/24	2024/25	2025/26	2026/27	2027/28	2028/29	2029/30	2030/31	2031/32	2032/33	2033/34	2034/35
ARBOR CREEK MIDDLE SCHOOL	1,050	890	894	941	943	934	897	872	864	876	876	902	904	905
BRIARHILL MIDDLE SCHOOL	1,150	950	794	800	803	775	756	719	718	680	677	668	675	674
CREEK VALLEY MIDDLE SCHOOL	1,100	880	564	575	542	556	566	574	591	578	589	574	586	591
DELAY MIDDLE SCHOOL	1,300	1,120	627	589	619	629	649	618	619	586	574	572	585	597
DOWNING MIDDLE SCHOOL	1,025	865	503	530	561	569	592	582	555	516	463	448	457	466
DURHAM MIDDLE SCHOOL	1,100	946	647	642	656	667	697	682	648	618	608	611	611	615
FORESTWOOD MIDDLE SCHOOL	1,400	1,268	919	893	886	878	886	874	824	783	739	737	756	762
GRIFFIN MIDDLE SCHOOL	1,250	1,130	721	700	748	823	847	867	941	1,009	1,068	1,083	1,125	1,144
HEDRICK MIDDLE SCHOOL	1,225	1,159	871	874	858	874	875	856	853	813	759	696	686	670
HUFFINES MIDDLE SCHOOL	1,050	896	617	623	624	604	623	583	614	599	610	580	586	591
KILLIAN MIDDLE SCHOOL	1,425	1,337	945	999	965	941	915	895	853	811	774	790	791	798
LAKEVIEW MIDDLE SCHOOL	1,150	1,090	419	400	371	388	395	416	395	393	380	387	405	422
LAMAR MIDDLE SCHOOL	1,025	885	728	711	703	703	707	700	690	649	632	632	649	663
MCKAMY MIDDLE SCHOOL	1,150	1,106	825	756	753	747	760	736	736	704	661	641	645	640
SHADOW RIDGE MIDDLE SCHOOL	1,000	956	642	619	659	624	643	629	649	609	568	529	530	527
LLC MIDDLE SCHOOL			33	46	46	46	46	46	46	46	46	46	46	46
MIDDLE SCHOOL TOTALS	17,400	15,478	10,749	10,698	10,737	10,758	10,854	10,649	10,596	10,270	10,024	9,896	10,037	10,111
Middle School Total Change			-274	-51	39	21	96	-205	-53	-326	-246	-128	141	74
Middle School Percent Change			-2.49%	-0.47%	0.36%	0.20%	0.89%	-1.89%	-0.50%	-3.08%	-2.40%	-1.28%	1.42%	0.74%



Ten Year Forecast by High School Campus

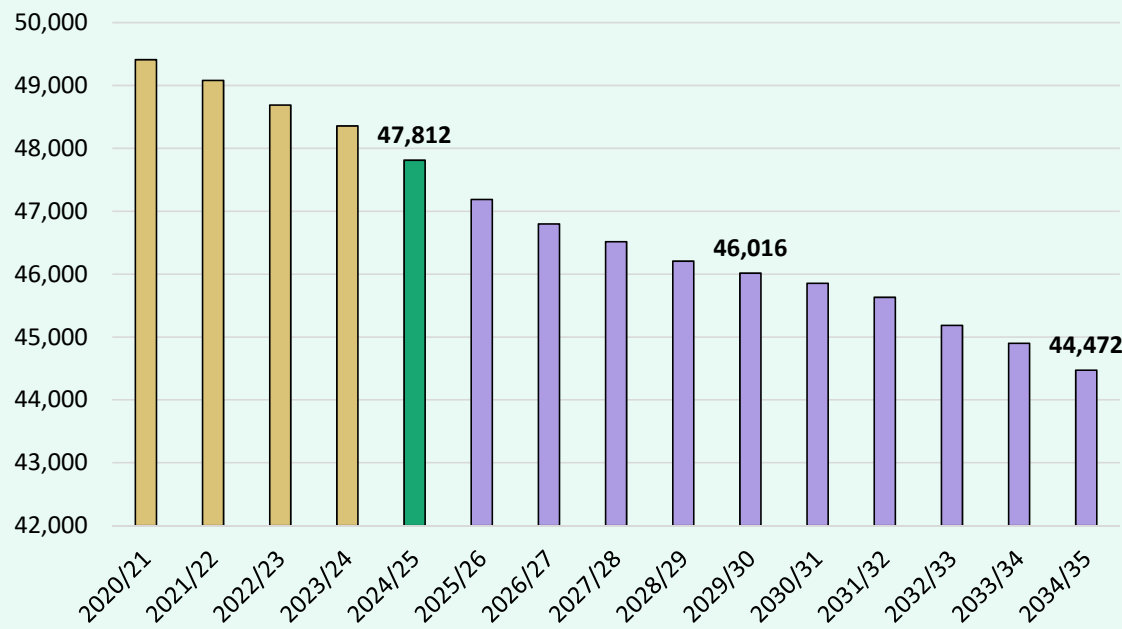


CAMPUS	2020 Maximum Capacity	Operational Capacity	HISTORY	FALL	ENROLLMENT PROJECTIONS									
			2023/24	2024/25	2025/26	2026/27	2027/28	2028/29	2029/30	2030/31	2031/32	2032/33	2033/34	2034/35
FLOWER MOUND 9th GRADE CAMPUS	783	783	808	885	822	838	757	870	773	795	817	737	665	678
HEBRON 9th GRADE CAMPUS	1,512	1,400	878	851	899	810	888	833	787	826	792	753	782	763
MARCUS 9th GRADE CAMPUS	837	745	728	769	710	712	716	746	686	721	687	642	601	610
FLOWER MOUND HIGH SCHOOL	3,780	3,555	2,633	2,548	2,579	2,549	2,572	2,442	2,492	2,426	2,464	2,409	2,373	2,242
HEBRON HIGH SCHOOL	3,564	3,290	2,796	2,828	2,711	2,693	2,613	2,648	2,588	2,561	2,501	2,459	2,424	2,382
LEWISVILLE HIGH SCHOOL	2,862	2,650	1,963	1,943	2,026	1,921	1,815	1,879	1,825	1,891	1,933	1,907	1,854	1,825
LEWISVILLE BEN HARMON HS	1,458	1,330	1,173	1,063	1,039	1,125	1,105	1,137	1,179	1,174	1,135	1,092	1,052	995
LEWISVILLE KILLOUGH	1,122	920	1,023	1,026	927	891	865	899	903	880	863	873	868	774
MARCUS HIGH SCHOOL	3,645	3,345	2,276	2,236	2,282	2,244	2,243	2,191	2,228	2,201	2,206	2,147	2,103	1,984
THE COLONY HIGH SCHOOL	3,321	2,960	1,882	1,814	1,747	1,702	1,644	1,650	1,720	1,777	1,851	1,955	1,998	2,084
LLC HIGH SCHOOL			175	129	129	129	129	129	129	129	129	129	129	129
HIGH SCHOOL TOTALS	22,884	20,978	16,335	16,092	15,871	15,614	15,347	15,424	15,310	15,381	15,378	15,103	14,849	14,466
High School Total Change			-21	-243	-221	-257	-267	76	-114	71	-3	-275	-254	-383
High School Percent Change			-0.13%	-1.49%	-1.37%	-1.62%	-1.71%	0.50%	-0.74%	0.46%	-0.02%	-1.79%	-1.68%	-2.58%
DISTRICT TOTALS	73,634	63,437	48,356	47,812	47,187	46,799	46,515	46,206	46,016	45,854	45,631	45,184	44,901	44,472
District Total Change			-332	-544	-625	-388	-284	-309	-191	-161	-223	-448	-283	-429
District Percent Change			-0.68%	-1.13%	-1.31%	-0.82%	-0.61%	-0.66%	-0.41%	-0.35%	-0.49%	-0.98%	-0.63%	-0.95%



Key Takeaways

Enrollment Forecast



- LISD enrollment declined by 544 students this year
- New home starts across DFW are up 10% year over year
- LISD has seen a slowdown in new home starts in 2024 due to lack of lot availability
- LISD has more than 250 currently in inventory with more than 400 additional lots available to build on
- Groundwork is underway on roughly 700 lots within 7 subdivisions
- LISD is forecasted to enroll nearly 46,000 students by 2029/30 and roughly 44,500 students in 2034/35