



**Construction Report**  
**August 19, 2020**  
**Operations Division**  
**Denton Independent School District**

**Prepared by:**

**Paul Andress, Executive Director of Operations**

**Garry Ryan, Executive Manager of Construction, Planning & Growth**

**Sherry Utchell, Administrative Assistant**

**Balfour Beatty Construction**

**Northstar Builders**

**Stantec Architects**

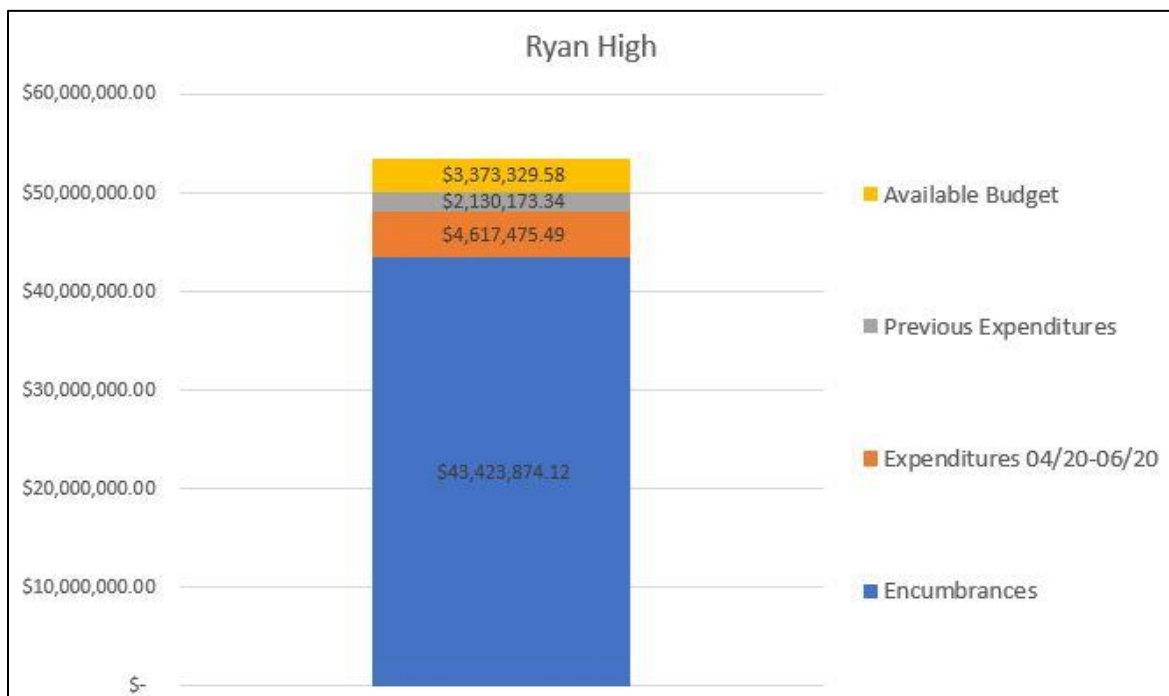
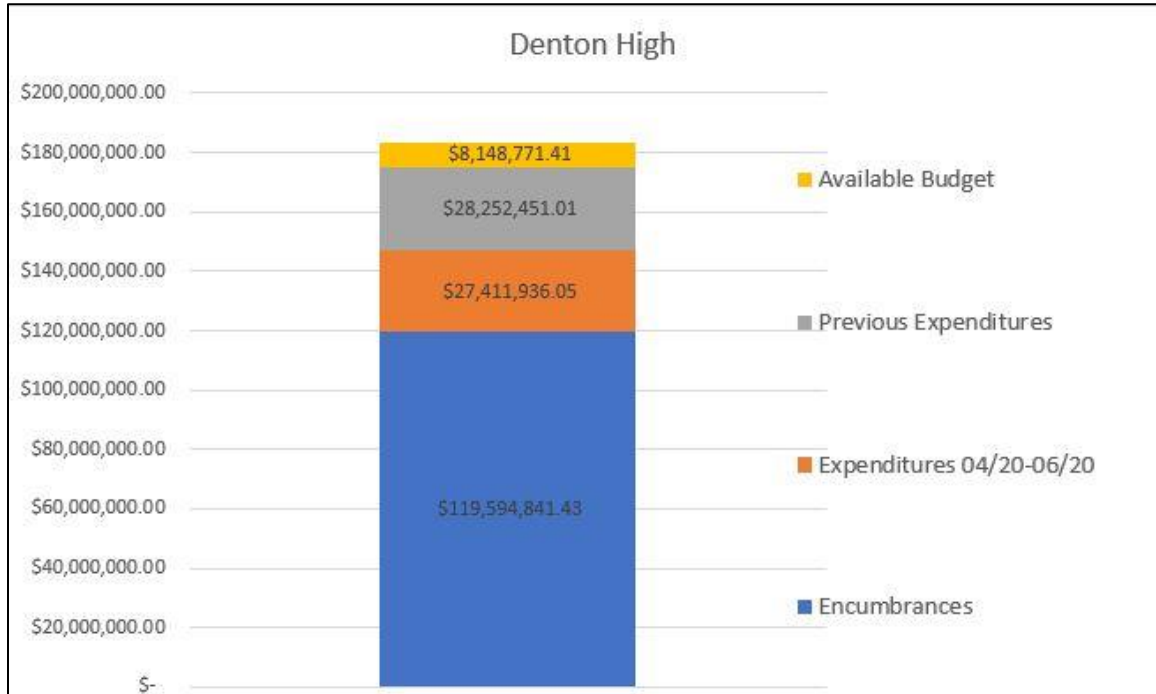
**VLK Architects**

## Table of Contents

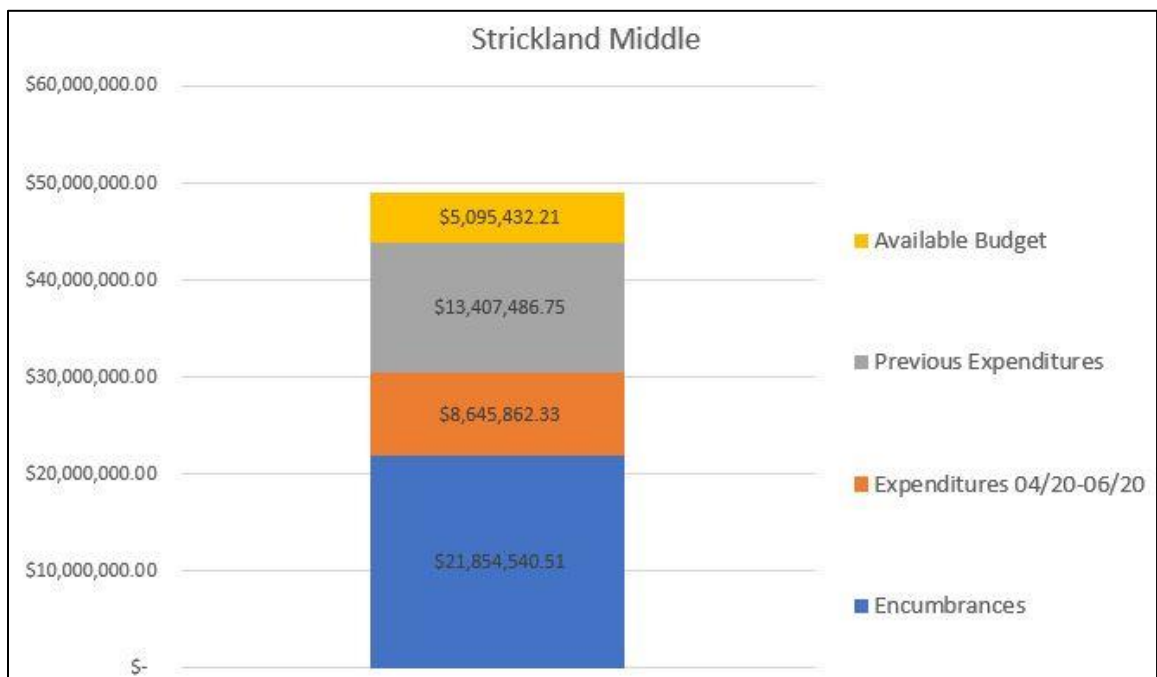
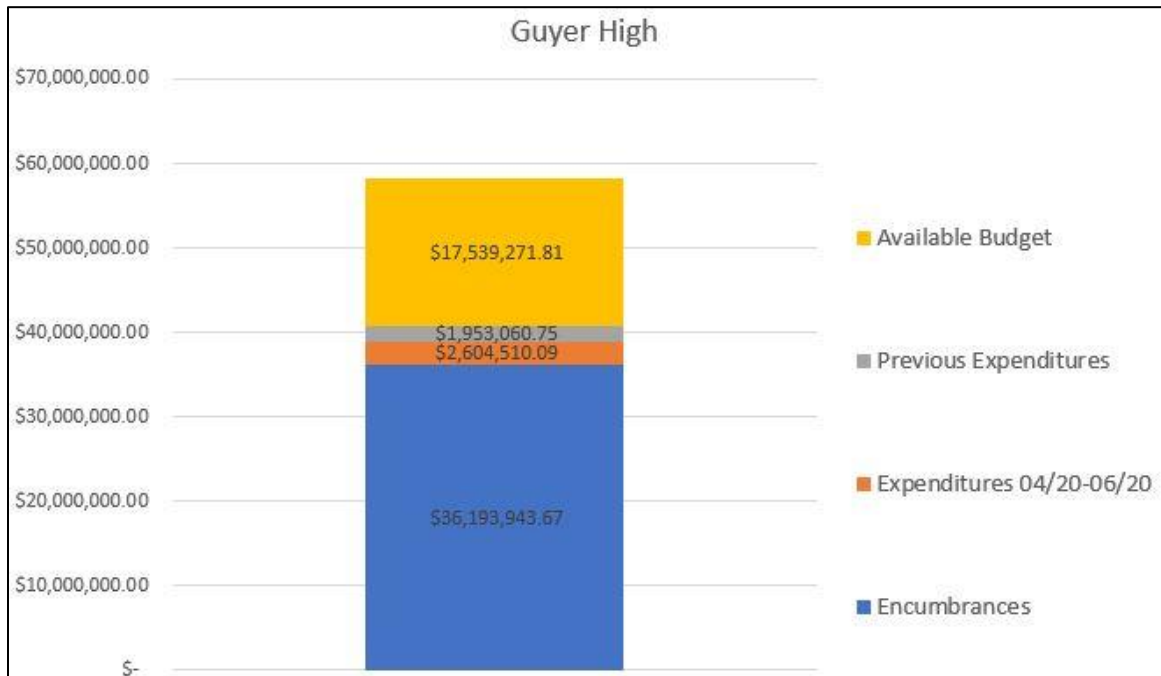
Construction Costs.....	3
Technology Projects.....	6
New Denton High Update.....	11
Strickland Middle Renovations.....	14
W. Wilson Elementary Replacement Campus.....	17
Ryan High Renovations Update.....	22
Guyer High Renovations Update.....	27
Braswell High Renovations Update.....	30
Controls/MEP.....	42



# Construction Costs



## Construction Costs cont.





## Construction Costs cont.



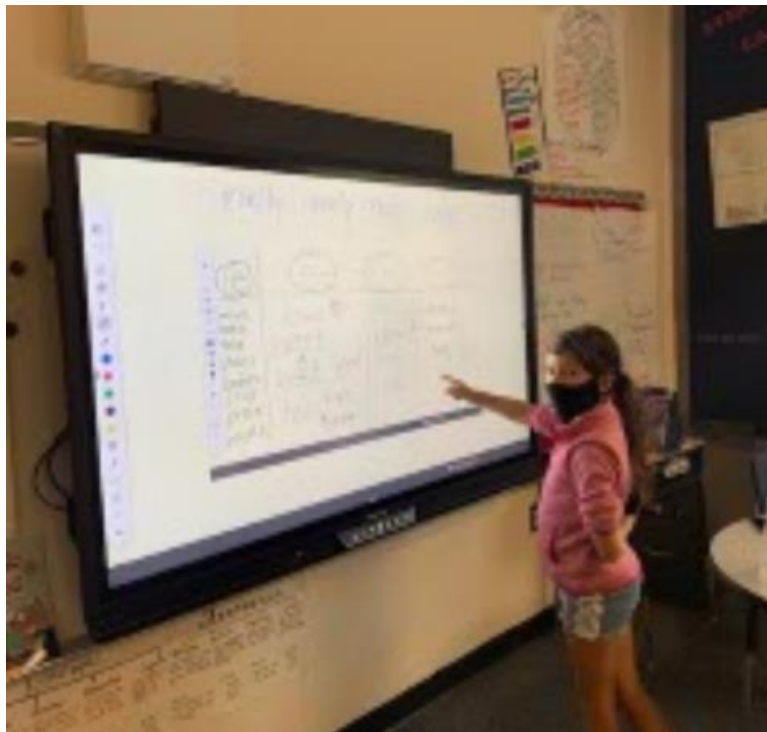
**End of Construction Costs**



# **Project – 86**

## **2018 Technology Bond Projects**

(2018 Bond Authorization)



## Technology Projects

The Classroom Display and AV Project is continuing deployment. The campuses are rolling out in 2 phases. Phase 1 includes campuses with projectors 2008 and older. Phase 2 are campuses with projectors predominately 2013 or older.

ProComputing is operating under the current health guidelines of wearing protective items such as n95 facemasks and gloves as well as adhering to the social distancing guidelines. ProComputing is installing panels Monday-Thursday.

Phase 1 Campuses previously completed:

- Hawk Elementary • Newton Rayzor Elementary • Blanton Elementary
- McMath Middle School • Borman Elementary • Houston Elementary
- Ginnings Elementary • Evers Park Elementary • ATC • Hodge Elementary • McNair Elementary • EP Rayzor Elementary • Rivera Elementary

Phase 1 Campuses Completed since May include:

- Paloma Creek
- Davis
- Alexander
- CMS
- GHS
- Stephens

Phase 2 Campuses Completed:

- Pecan Creek
- Nelson
- WS Ryan

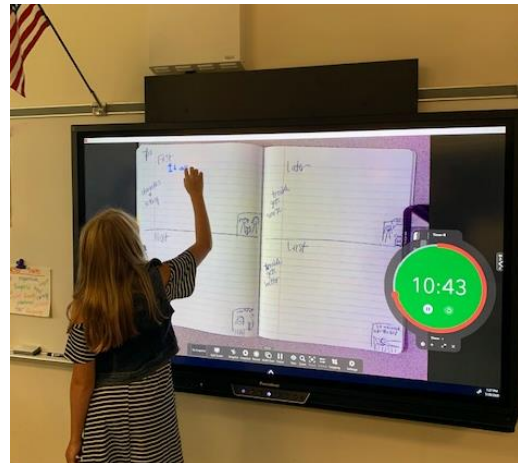


## Technology Projects cont.

- Savannah

Phase 2 Campuses to still be completed:

- Navo
- Cross Oaks
- Providence
- HMS
- GHS
- RCMS
- FMHS
- Sparks
- RHS
- BMMS



Panel Classrooms at Pecan Creek Elementary



## Technology Projects cont.

### **PA (Public Address) System**

The standalone PA system project supplements the Classroom A/V project to unify our separate systems in these areas and minimize ongoing support needs as well as granting self-management capabilities for campuses for items such as bell schedules and clocks.

Tasks completed previous 90 days:

- None

Tasks upcoming:

- Funding will be available after the Fall 2020 bond sale
- An RFP should be issued in September

### **Fiber**

This is in support of multiple project sites and will serve to enhance the District's fiber optic network infrastructure.

Tasks completed previous 90 days:

- None

Tasks upcoming:

- Remainder of funding will be available after the Fall 2020 bond sale

### **MDF/IDF's**

Creating dedicated MDF and IDF closets at 8 schools to remove network equipment from the current classroom wall mounts.



## Technology Projects cont.

Tasks completed previous 90 days:

- None

Tasks upcoming:

- Remainder of funding will be available after the Fall 2020 bond sale
- Release of RFP

### **Network Infrastructure Additions & Refresh**

Phase 1 of this project is E-rate eligible. E-rate process underway with Board approval. Project will commence based on E-rate approval and 2020 bond sale in August. This covers approximately half the district and Phase 2 will be a separate RFP scheduled to be release Fall 2020.

Tasks completed previous 90 days:

- None

Tasks upcoming:

- Funding will be available after the Fall 2020 bond sale
- Meet with selected vendor for Phase 1 project kick-off
- Release RFP for Phase 2

End of Technology Projects report



**Project - 02**

**New Denton High School**

(2018 Bond Authorization)

Architects – VLK Architects

Contractor – Northstar Builders

Move In – Spring / Summer 2022





## New Denton High School cont.

### Tasks completed previous 90 days:

- East and West Classroom Wings exterior windows installed
- 90% complete on 1<sup>st</sup> floor slabs & 30% complete on 2<sup>nd</sup> floor slabs
- Complete structural steel erection for administration space and dome
- Complete CMU on Athletic/Shop Areas
- Complete Public Water & Utilities
- Poured Tennis Court slabs





## New Denton High School cont.

### Tasks upcoming:

- Erect the Structural Steel for the Gyms
- ICF for the Storm Shelter/Band Hall
- Complete Slabs for Field Houses
- Complete Fire Lanes
- Start Baseball/Softball Fields
- Start CMU on Auditorium and Cafeteria

End of New Denton High School report



# Project – 17

## Strickland Middle School Renovation

(2018 Bond Authorization)

Architect – VLK Architects

Contractor – Balfour Beatty Construction

Move In – Summer 2021



Demolition for New Library  
& Administration

After Commencement

Before Commencement



## Strickland Middle School Renovation cont.

### Tasks completed last 90 days:

- Completed installation of brick veneer, dynamic glass and concrete columns at 2 story classroom addition
- Completed bus drive canopy on South side of the school
- Completed above ceiling MEP rough-ins and inspections at 2 story addition, fine arts and athletic areas
- Started installation of science casework, millwork, door and hardware in all areas
- Started finishes including ceramic tile, flooring, paint and ceilings in all areas
- Started demolition of basement and first floor for new library and administration



## Strickland Middle School Renovation cont.

### Tasks upcoming:

- Finish punch list items for all areas completed
- Continue demolition for new library and administration
- Start grading and foundation for new areas
- Start structural steel erection for crawl space
- Pour concrete slabs for new building
- Start structural steel erection for the building

End of Strickland Middle School Renovation report



**Project – 37**

**Woodrow Wilson Elementary**

**Replacement Campus**

(2018 Bond Authorization)

Architect – Stantec Architects

Contractor – Balfour Beatty Construction

Move In – Summer 2021





## Wilson Elementary Replacement Campus cont.

### Tasks completed previous 90 days:

- Crawlspace areas completed
- First Floor Slabs have been completed
- Steel Erection in all areas except 2<sup>nd</sup> and 5<sup>th</sup> classroom wing is completed
- Second Floor Slabs in all areas except 2<sup>nd</sup> and 5<sup>th</sup> classroom wing is completed
- Exterior Framing & Sheathing in Kitchen/Dining is completed
- West Fire Lane has been poured



*Storm Shelter CMU*



## Wilson Elementary Replacement cont.



*Dining Clerestory Windows*



*Admin Area Interior & Elevator Pit*





## Wilson Elementary Replacement cont.



*2<sup>nd</sup> and 5<sup>th</sup> classroom wing Steel Erection*



*Pre-K and 1<sup>st</sup> classroom wing Level 2*





## Wilson Elementary Replacement cont.

### Tasks upcoming:

- Complete Steel Erection & Slabs
- Complete Exterior Framing & Sheathing
- Roofing
- Complete CMU at Storm Shelter
- Interior Walls
- Storefronts

End of Wilson Elementary Replacement report



# Project – 01

## Ryan High School Renovations

(2018 Bond Authorization)

Architect – VLK Architects

Contractor – Northstar Builders

Move In – Spring 2022



## Ryan High School Renovations cont.

### Tasks completed previous 90 days:

- Utilities installed
- Existing concession building removed
- Parking paving poured, caulked, and striped
- Electrical rough-in for new lighting and sound system in the gym
- Existing bleachers refurbished and upgraded



*Football Field 50 Yard Line*





## Ryan High School Renovations cont.



*Baseball, Practice Fields, and Tennis Courts*



*Transportation Parking Lot*



## Ryan High School Renovations cont.



*Gymnasium*



*Kitchen*





## Ryan High School Renovations cont.



*Shop Renovation*

### Tasks upcoming:

- Parking lot paving
- Foundation for Auditorium
- Install turf, install chain link fence, and gate at the football field
- Building pads for new concessions area, batting cage area, and new storage building area
- Painting of logos in gymnasium and paint practice gymnasium
- Install light fixtures, goals and wall pads, sound system, scoreboards and video monitors in the gymnasium
- Complete new serving line
- Interior metal framing of walls in the Shop

End of Ryan High School Renovations report



# **Project – 03**

## **Guyer High School Renovations**

(2018 Bond Authorization)

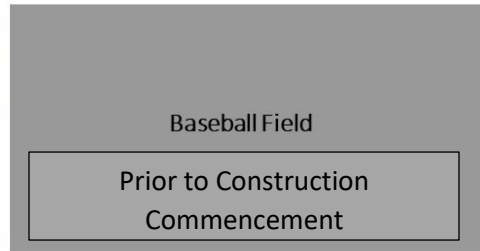
Architect – VLK Architects

Contractor – Balfour Beatty Construction

Move In – Summer 2021



After Construction  
Commencement



Baseball Field  
Prior to Construction  
Commencement



## Guyer High School Renovations cont.

### Tasks completed previous 90 days:

- Completed demolition of existing softball field
- Completed excavation and starting fill for the softball field, baseball field, tennis courts, weight room addition and field houses
- Started utility work
- Poured concrete for parking additions
- Started CMU installation at track storage and softball dugouts





## Guyer High School Renovations cont.

### Tasks upcoming:

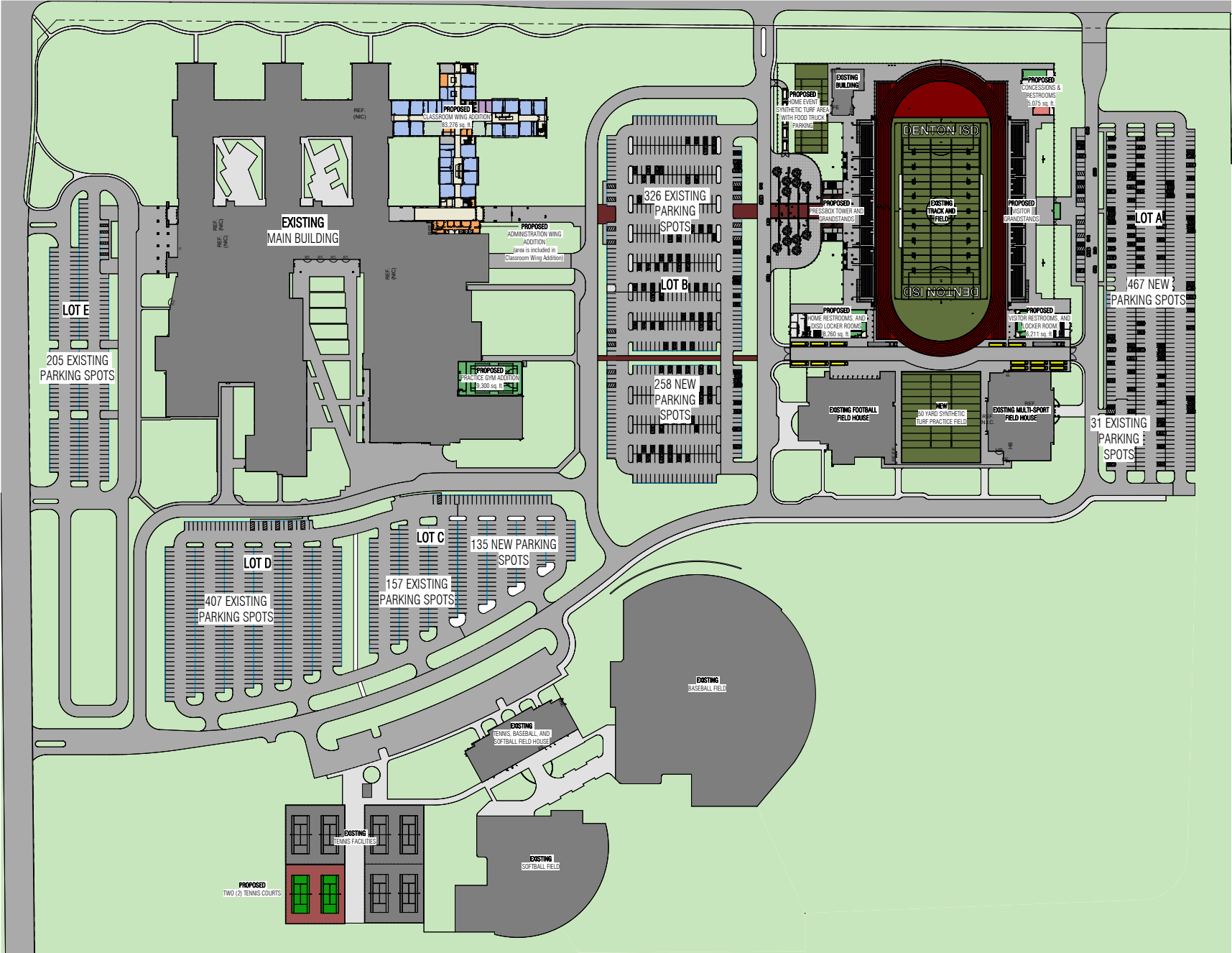
- Complete fill for all fields
- Complete foundation work for weight room addition, field house, tennis courts and field events
- Start foundations for scoreboards, foul poles, netting and fencing
- Start installation of CMU block at softball field house, weight room addition and field events area
- Complete utility work

End of Guyer High School Renovations report



**Project – 04**  
**Braswell High School Additions**  
(2018 Bond Authorization)  
Design Phase  
Staged Opening Concluding 2022





PARKING COUNT	
<b>PARKING LOT A (VISITOR SIDE):</b>	
EXISTING SPACES:	31
NEW SPACES:	467
<b>TOTAL SPACES:</b>	<b>498</b>
<b>PARKING LOT B (HOME SIDE):</b>	
EXISTING SPACES:	326
NEW SPACES:	258
<b>TOTAL SPACES:</b>	<b>584</b>
<b>PARKING LOT C (SOUTH):</b>	
EXISTING SPACES:	157
NEW SPACES:	135
<b>TOTAL SPACES:</b>	<b>292</b>
<b>PARKING LOT D (SOUTH):</b>	
EXISTING SPACES:	407
<b>TOTAL SPACES:</b>	<b>407</b>
<b>PARKING LOT E (WEST):</b>	
EXISTING SPACES:	205
<b>TOTAL SPACES:</b>	<b>205</b>
<b>EXISTING SPACES TOTAL:</b>	
	1126
<b>NEW SPACES TOTAL:</b>	
	775
<b>TOTAL PARKING:</b>	
	1851
<b>SPACES REQ. BY A.H.J.:</b>	
	1750
<b>TOTAL :</b>	
	1906
<b>RUS PARKING AT STADIUM:</b>	
TOTAL SPACES:	~20

TRUE NORTH

PLAN NORTH

1

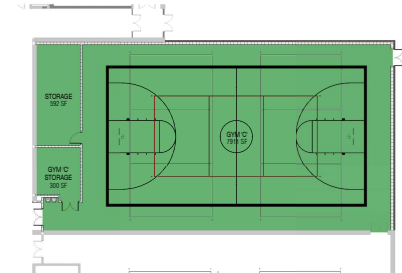
OVERALL SITE PLAN

SCALE: 1" = 80'-0"

Braswell H.S. & Carrico Athletic Complex Additions  
MAIN BUILDING - FIRST FLOOR PLAN



SD LEVEL ONE  
SCALE: 1" = 20'-0"

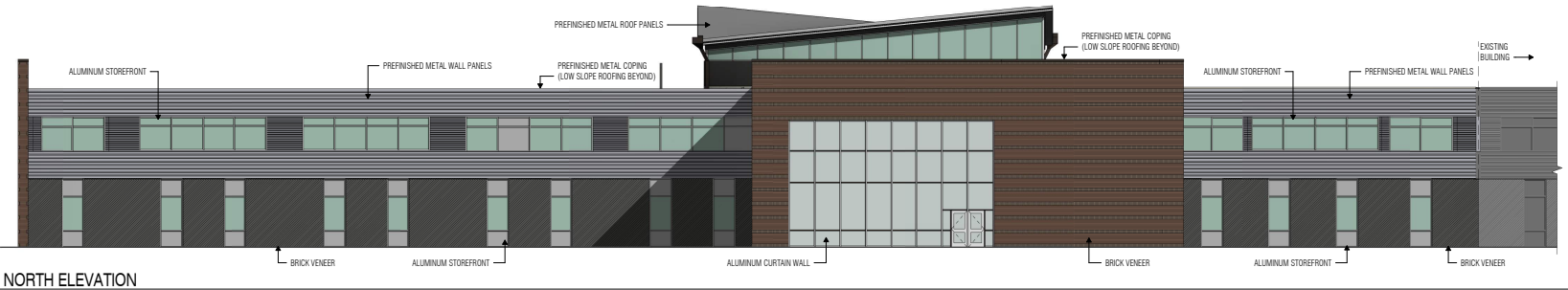




DEPARTMENT LEGEND

- ADMINISTRATION
- CIRCULATION
- CLASSROOMS
- COLLABORATIVE AREA
- FINE ARTS
- RESTROOMS AND SERVICE
- SCIENCE AND TECHNOLOGY
- SCIENCE LABS
- SPECIAL EDUCATION

SD LEVEL TWO  
SCALE: 1" = 20'-0"



NORTH ELEVATION  
SCALE: 1" = 10'-0"



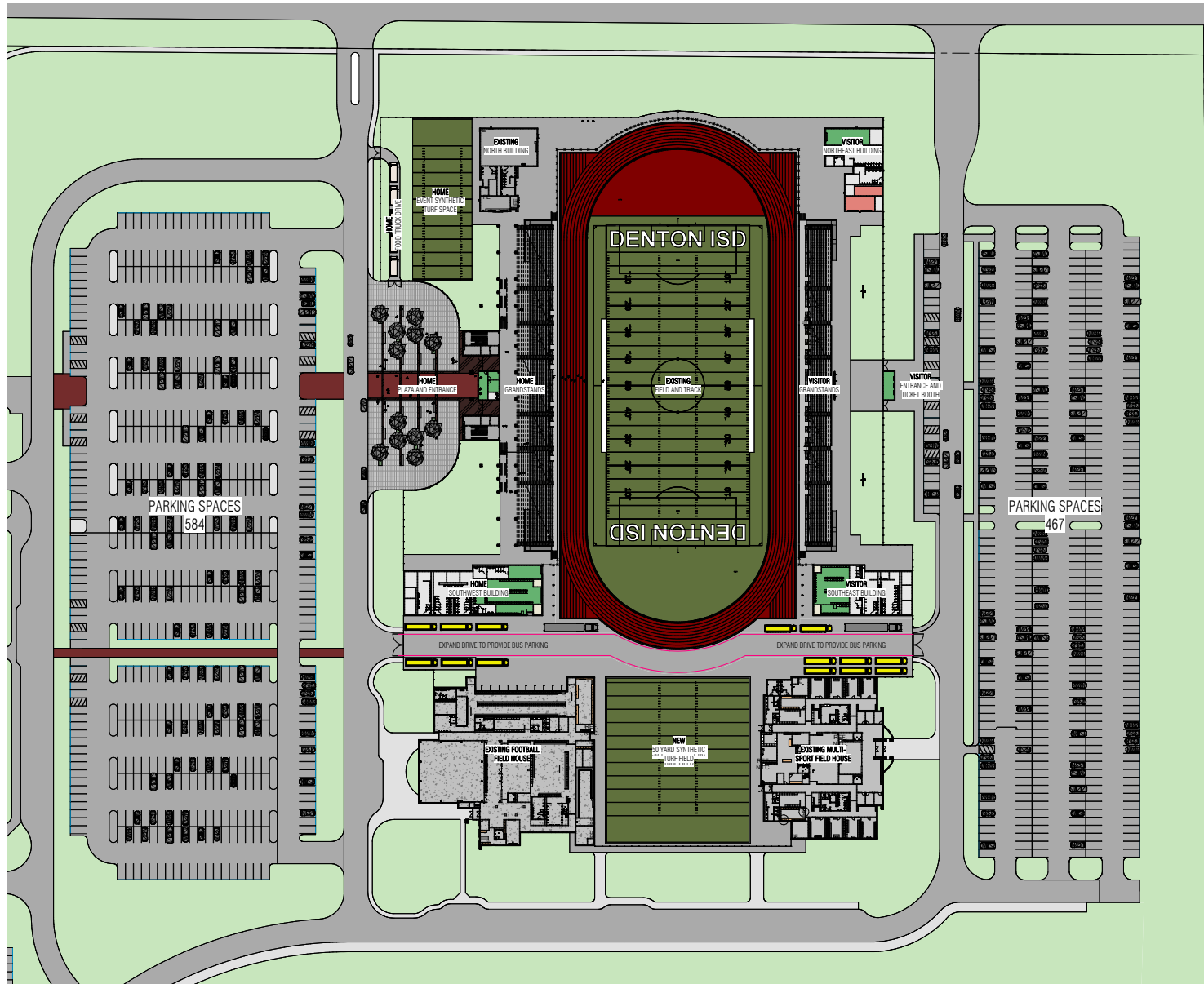
EAST ELEVATION  
SCALE: 1" = 10'-0"



EASTERN ENTRY- VIEW LOOKING NORTH  
SCALE:



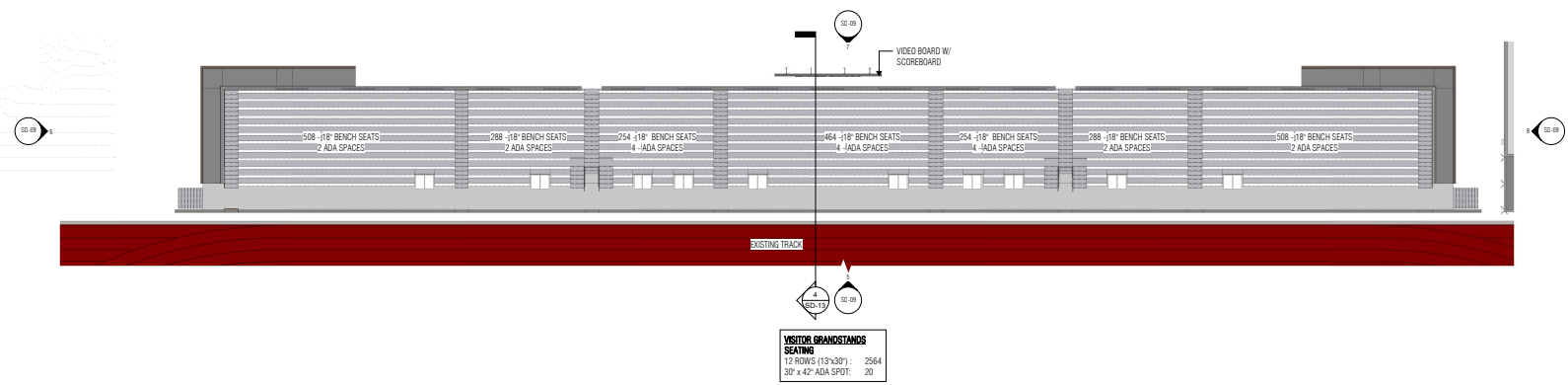
NORTHERN VIEW- FROM HIGHWAY  
SCALE:



DESIGN CRITERIA PLUMBING FIXTURE COUNTS																															
NEW STADIUM GRANDSTANDS				EXISTING FIXTURES (HOME SIDE)																											
HOME SIDE:				MALE: 2 WC + 2 U + 2 LAV																											
VISITOR SIDE:				FEMALE: 7 WC + 4 LAV																											
TOTAL OCCUPANTS				UNSEX: 1 WC + 1 LAV																											
7,194																															
REQUIRED FIXTURES (GROUP A-S OCCUPANTS)																															
HOME SIDE:				VISITOR SIDE:																											
MALE				2,301		WC		1:75 FOR FIRST 1,500		=20		LAVS 1:200 = 12		VISITOR SIDE:		MALE		1,296		WC		1:75 FOR FIRST 1,500		=17		LAVS 1:200 = 7					
						WC		1:120 FOR EXCESS		=27						TOTAL				TOTAL		=17									
						FEMALE		2,301		WC		1:40 FOR FIRST 1,500		=38		LAVS 1:150 = 15				FEMALE		1,296		WC		1:40 FOR FIRST 1,500		=32		LAVS 1:150 = 9	
										=51												TOTAL		=32							
DRINKING FOUNTAINS:																															
HOME SIDE:				VISITOR SIDE:																											
TOTAL				4602		TOTAL		1:1000		=05												TOTAL		2592		TOTAL		1:1000		=03	
TOTAL FIXTURES REQUIRED VS. FIXTURE PROVIDED																															
HOME SIDE:				VISITOR SIDE:																											
MALE				WC		27 REQ'D		(7 WC + 15 URINALS + 1 UNSEX)		= 23 PROVIDED												MALE		WC		17 REQ'D		(6 WC + 11 URINALS + 1 UNSEX)		= 17 PROVIDED	
				LAV		12 REQ'D		(9 LAVS + 1 UNSEX)		= 10 PROVIDED														LAV		07 REQ'D		(8 LAVS + 1 UNSEX)		= 09 PROVIDED	
														</																	

PARKING COUNT	
PARKING LOT A (VISITOR SIDE):	
EXISTING SPACES:	31
NEW SPACES:	467
TOTAL SPACES:	498
PARKING LOT B (HOME SIDE):	
EXISTING SPACES:	326
NEW SPACES:	228
TOTAL SPACES:	554
EXISTING SPACES TOTAL:	
NEW SPACES TOTAL:	725
TOTAL PARKING:	1082
BUS PARKING AT STADIUM:	
TOTAL SPACES:	~20

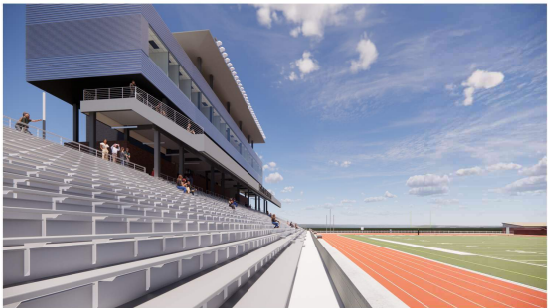




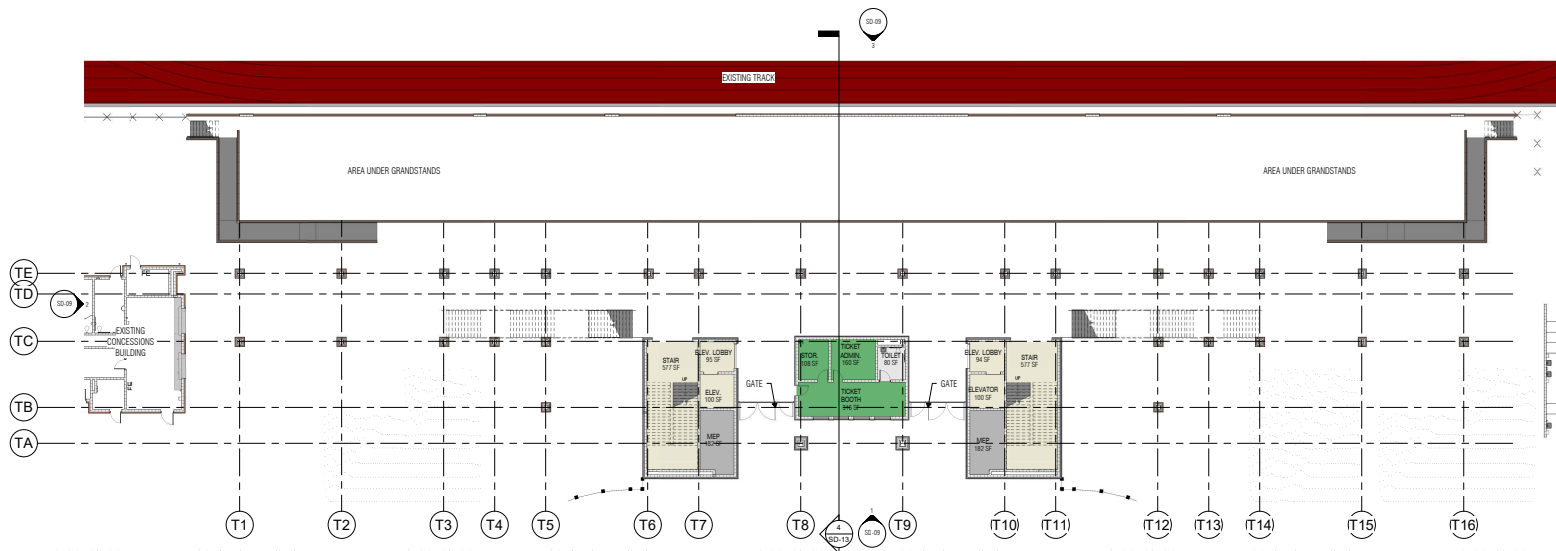
CARRICO STADIUM - LEVEL 01 - VISITOR GRANDSTANDS  
SCALE: 1/16" = 1'-0"



VISITOR - GRANDSTANDS AND SCOREBOARD



HOME - FRONT ROW GRANDSTANDS

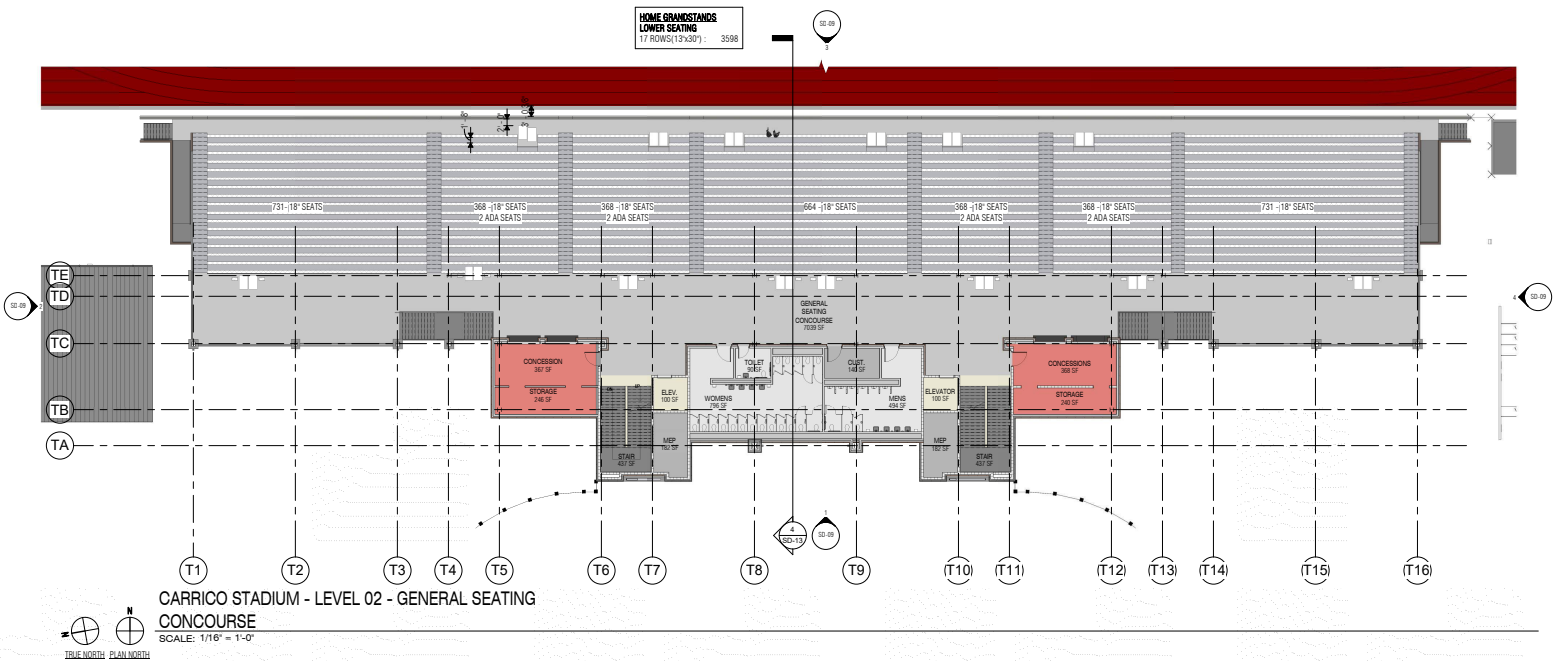


CARRICO STADIUM - LEVEL 01 GROUND  
SCALE: 1/16" = 1'-0"



HOME - GROUND LEVEL CONCOURSE

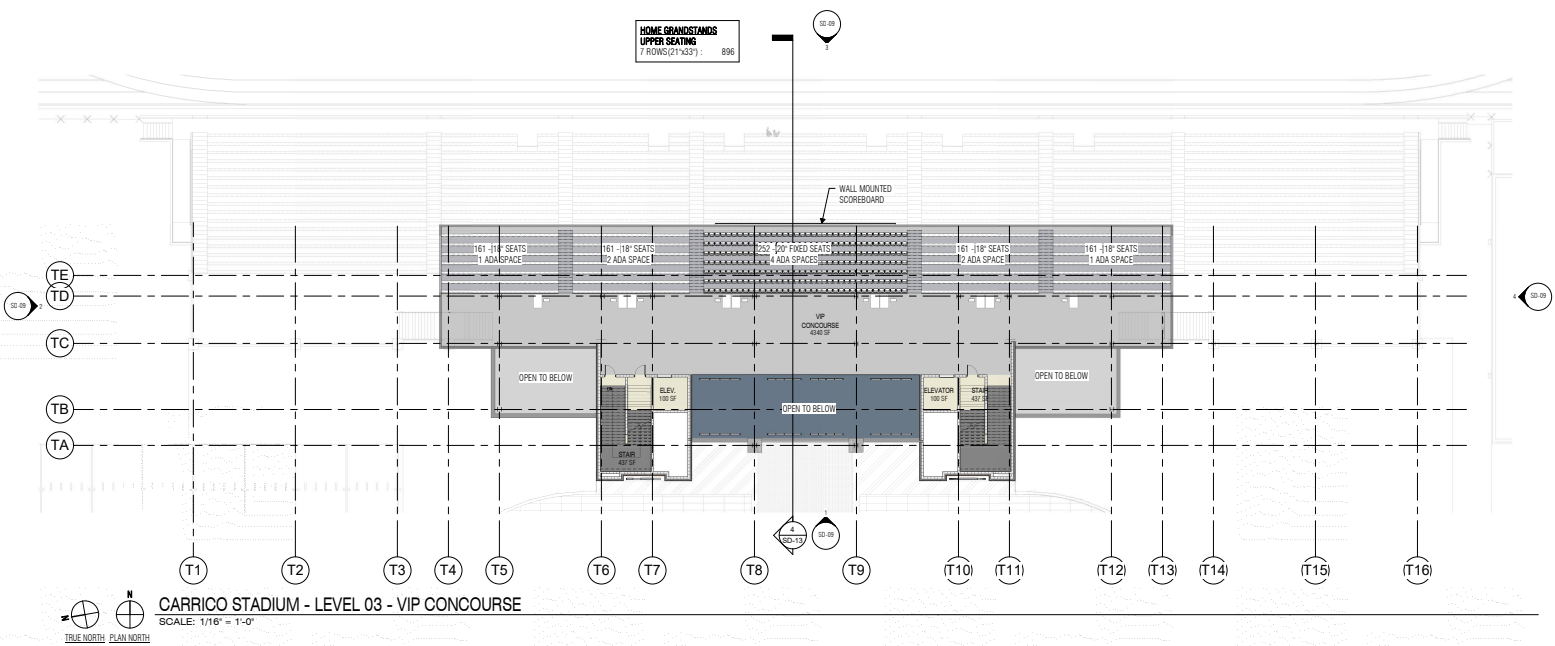




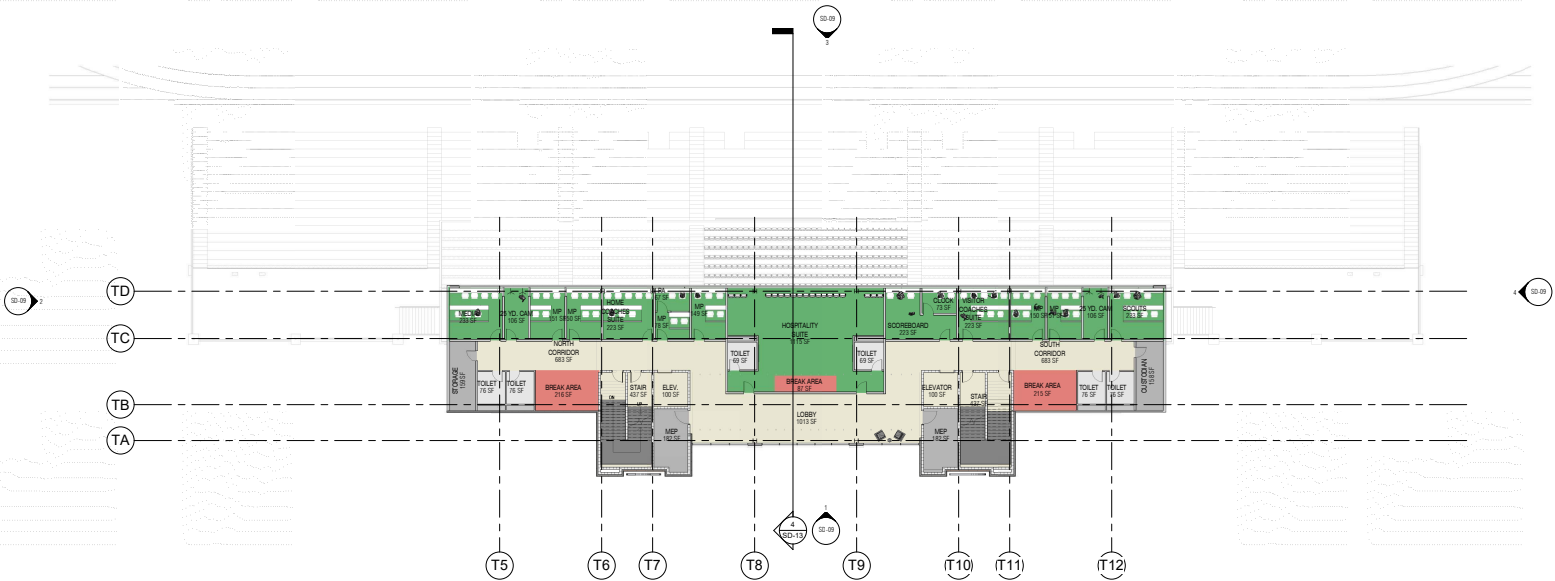
HOME - SOUTH END - GENERAL SEATING CONCOURSE LEVEL



HOME - 50 YARD LINE AT GENERAL SEATING CONCOURSE LEVEL



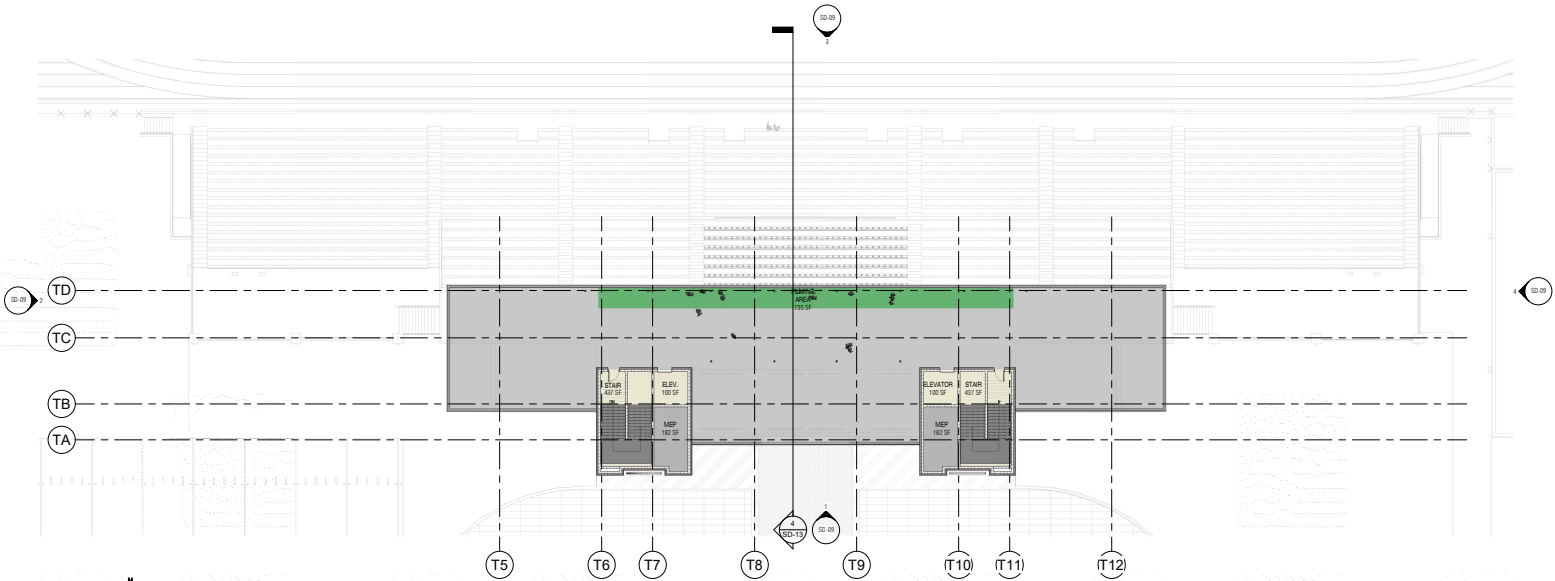
HOME - VIP SEATING CONCOURSE



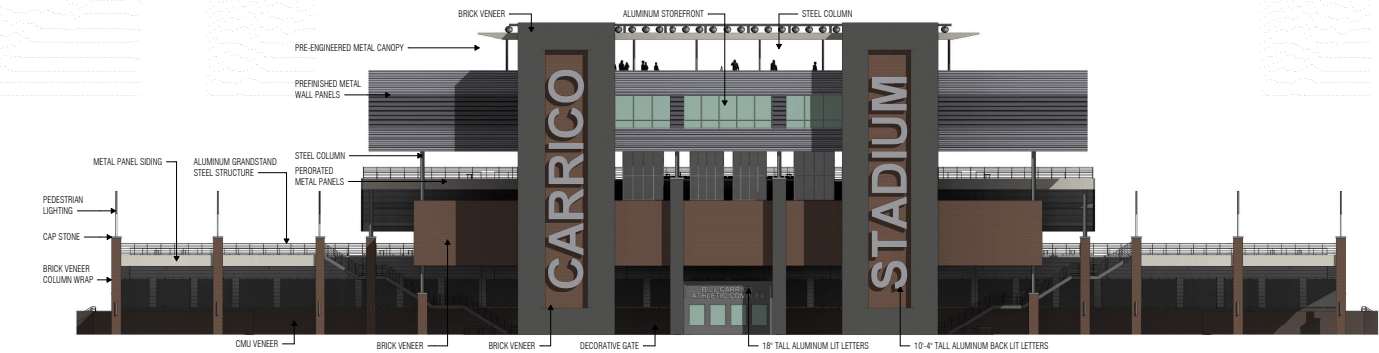
HOME - MEDIA SUITE IN THE PRESS BOX



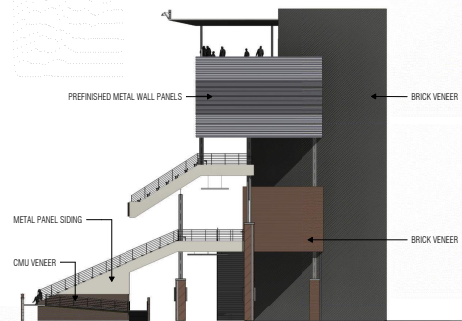
HOME - PRESS BOX LOBBY



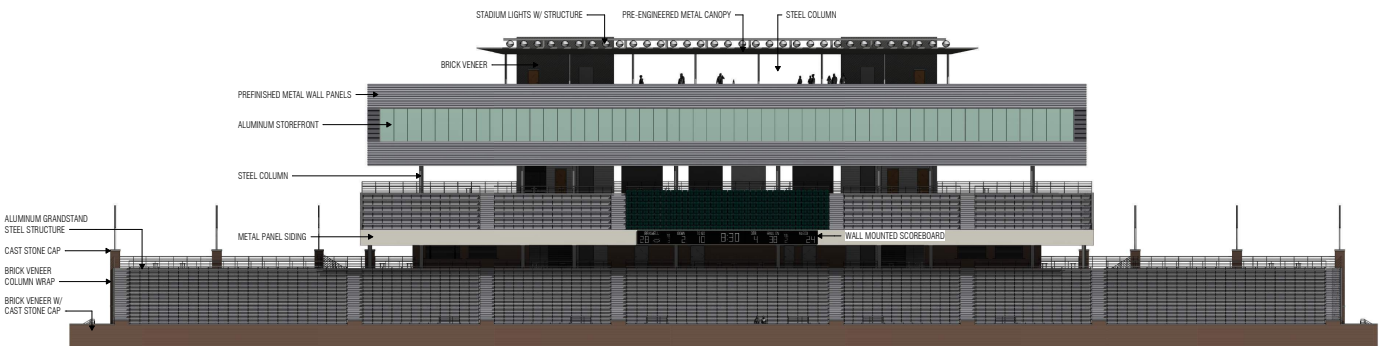
HOME - FILM DECK



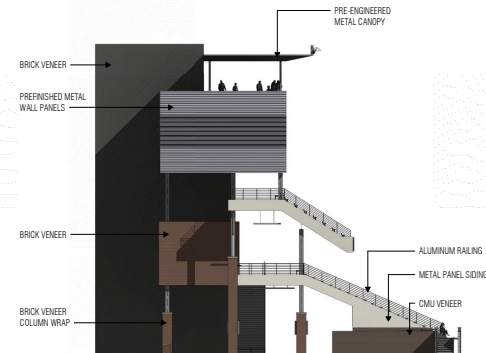
CARRICO STADIUM - WEST ELEVATION  
SCALE: 1/16" = 1'-0"



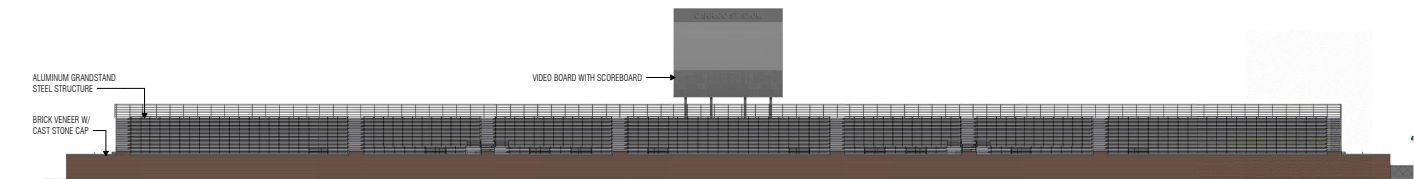
CARRICO STADIUM - NORTH ELEVATION  
SCALE: 1/16" = 1'-0"



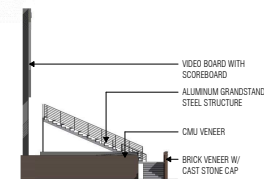
CARRICO STADIUM - EAST ELEVATION  
SCALE: 1/16" = 1'-0"



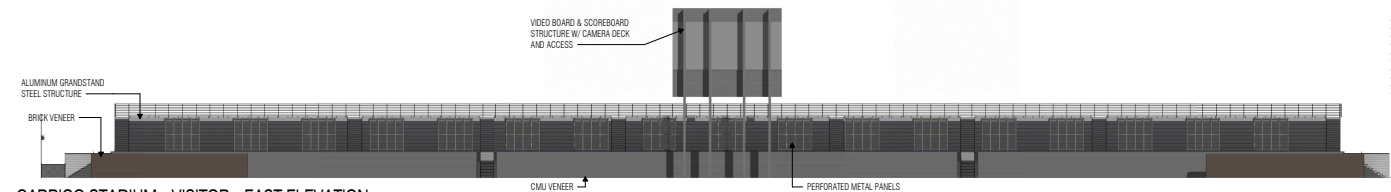
CARRICO STADIUM - SOUTH ELEVATION  
SCALE: 1/16" = 1'-0"



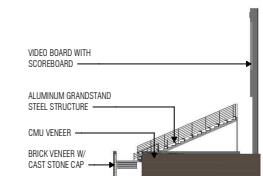
CARRICO STADIUM - VISITOR - WEST ELEVATION  
SCALE: 1/16" = 1'-0"



CARRICO STADIUM - VISITOR - NORTH ELEVATION  
SCALE: 1/16" = 1'-0"



CARRICO STADIUM - VISITOR - EAST ELEVATION  
SCALE: 1/16" = 1'-0"



CARRICO STADIUM - VISITOR - SOUTH ELEVATION  
SCALE: 1/16" = 1'-0"





AERIAL VIEW OF PLAZA



AERIAL VIEW OF HOME GRANDSTANDS



HOME PLAZA AND ENTRY



VIEW FROM HIGHWAY 380







# Controls/MEP Upgrades

## Currently in Progress:

- HVAC and Access Controls at Ann Windle
- HVAC and Access Controls at E.P. Rayzor Elementary
- HVAC and Access Controls at Ginnings Elementary
- HVAC and Access Controls at Ryan High School
- Access Controls at Providence Elementary
- Mechanical work at Ann Windle
- Mechanical work at E.P. Rayzor Elementary
- Mechanical work at Ginnings Elementary
- Mechanical work at Ryan High School
- Mechanical work at Crownover Middle
- Mechanical work at McMath Middle
- Mechanical work at Service Center Annex

## Starting Soon:

- Mechanical work at Rivera Elementary
- HVAC & Access Controls at Rivera Elementary

End of Controls/MEP Upgrades report

