



EDUCATE • INSPIRE • EMPOWER

Artificial Intelligence

Katy Tibbs, Digital Learning & AI Integration Specialist
Ben Baldizon, Program Manager AI Integration

November 2025



Who we are



Katy Tibbs

MESD Digital Learning & AI Integration
Specialist



Benjamin Baldizon

MESD Program Manager for AI Innovation
& Capacity Building



MESD Vision

MESD's Vision for AI



Purpose: To ensure AI is used responsibly, ethically, and equitably to support MESD's mission of educating, engaging, inspiring, and empowering through systems of support.

Strategic Alignment

Our vision directly supports MESD's **Strategic Plan**:

- **Student Success:** Expands accessibility, differentiation, personalized learning and prepares students for an AI-enabled world.
- **Equity:** Promotes use of AI tools that promote inclusion and accessibility that reduce—not widen—digital divides.
- **Workforce Well-Being:** Equips staff with training to use AI effectively and safely.
- **Innovation:** Encourages creative, ethical use of emerging technologies.
- **Operational Excellence:** Improves efficiency and decision-making through responsible automation.



MESD Systems



Steering Committee Members

- Sascha Perrins
- Angela Hubbs
- Amy Marquardt-Dustin
- David Cramblett
- Ben Baldizon
- Katy Tibbs
- Jamie Smith
- Cross departmental representation
- Began in Fall 2024
- Expand to an AI Advisory group in January 2026

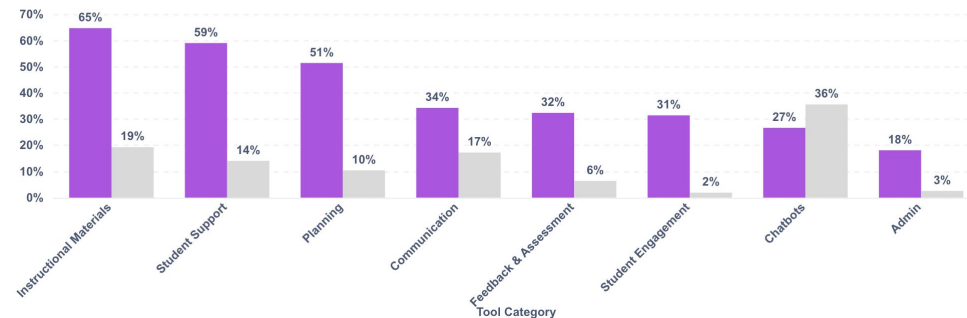
Instructional Focus



- **Piloted and vetted AI tools** (FERPA, COPPA, HIPAA compliant) including **MagicSchool AI**, **Google Gemini for Education Tools** and **Diffit**.
- **Professional learning:** AI training for MESD departments and educators at MESD schools and programs.
- **Resource development:**
 - MESD AI website with recommended tools, prompt libraries, and student use examples.
 - Monthly MESD Digital Learning Newsletter
 - Draft **AI Guidance** for staff and students aligned to board policy.

Teacher Tool Usage by Category

● % of Users ● % of Generations



MESD Educator Frequently Used Tools:

- Text Rewriter
- Text Translator
- Standards Unpacker
- Lesson Planner
- Writing Feedback
- Text Leveler
- Social Stories
- Assignment Scaffolder
- Accommodation Suggestion

Operational Focus



- **New Program Manager, AI Innovation and Capacity Building (Operations)** expanding AI use for efficiency, automation, and compliance.
- **Piloted and vetted AI tools** (FERPA, COPPA, HIPAA compliant) Google Gemini for Workspace and ChatGPT teams.
- **Integrating AI** into HR, business services, communications, and data systems.
- **Examples:**
 - Providing ongoing **AI PD** at monthly administrator and ILT meetings
 - Automating survey data entry into one sheet for Research and Evaluation
 - Automating data entry for admin assistants
 - Creating Custom GPTs/Gems for various people/uses (turning meetings notes into summaries and action plans, writing newsletters, aligning annual goals with Continuous Improvement Plans, helping staff identify tasks they would like to have AI do/support)
 - Setting up local LLM (all internal/hosted on MESD servers)



MESD Regional Leadership

Professional Learning



- Regional AI Network (RAIN) Cohort (2025, 2026)
 - 104 participants
- AI EmpowerED EDU Conference (2024, 2025, and upcoming 2026)
- Regional AI Steering Committee Workshop for district leaders
- ODE grant EdTech Cadre
- Paraeducator Conference and Trainings



Key Partnerships



Clackamas ESD/Northwest Regional ESD

- cross-ESD collaboration supporting AI efforts across our regions

Multnomah Clackamas Educator Network

- Professional Learning grant
- FTE funding



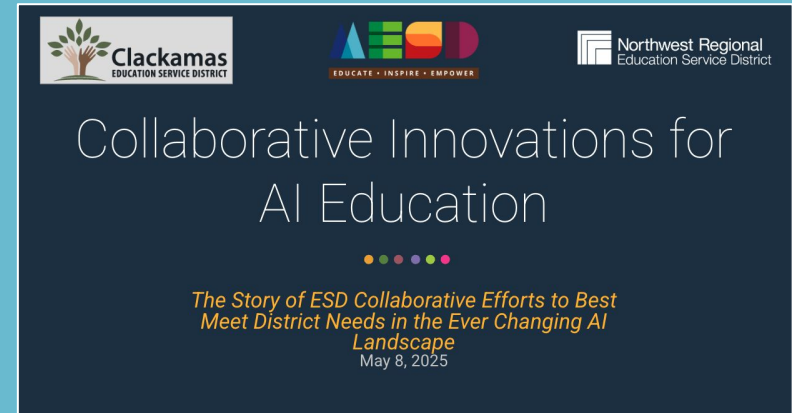
Encode AI-youth led organization advocating for responsible AI policy

aiEDU-nonprofit focused on advancing AI literacy and AI readiness in our education systems

Thought Leadership



- AESA Conference
- OAESD Conference
- Research Study with University of Portland (AI Competency)
- Board Policy (December 2024) regional model





Looking Ahead

2025-2026 Priorities



- Finalize and launch **MESD AI Guidance** for staff and student use.
 - Increase communication to all stakeholders
- **Increase use of AI as Assistive technology:** AI supports for IEP goal writing and personalized access to curriculum.
- Align **operational AI efforts** through new program manager and cross-departmental collaboration.
- Continue and expand professional learning opportunities: **AI Steering Committees, Educator Cohorts, 3rd Annual AI EmpowerED EDU Conference** (Spring 2026).



EDUCATE • INSPIRE • EMPOWER

Stay in touch with Multnomah Education Service District!



www.multnomahesd.org

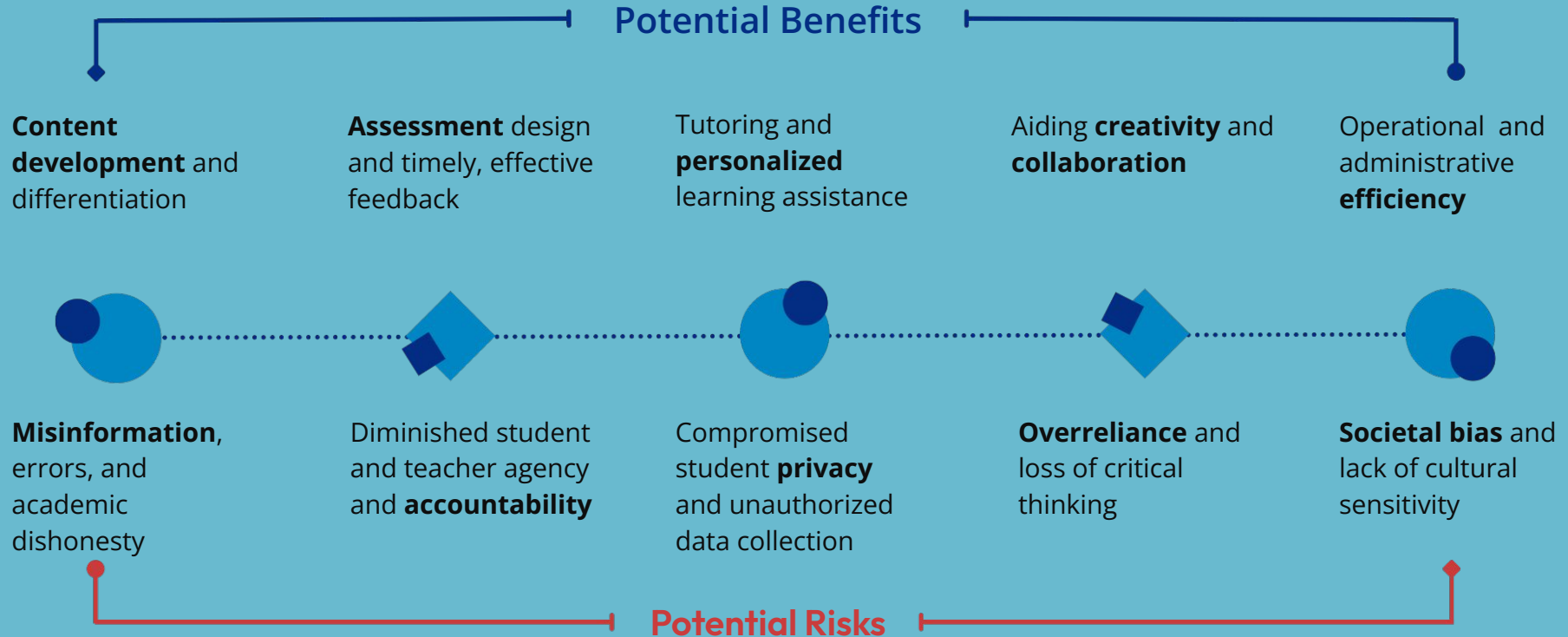


@MultnomahESD



Additional Resources

Potential Benefits & Risks of Using AI in Education



Why Are We Investing Resources in AI?



- AI is reshaping industries across society
- Information/Media Literacy for civic engagement
- AI use is a real world skill that employers are looking for and we need to equip students with
- Access, accessibility & differentiation
- Potential for greater efficiency and transformed educator workload
- Inform staff and students on responsible use that minimizes risks

Upskilling in an Age of AI



The AI shift requires **rapid upskilling**, with AI and big data skills leading the way.
([World Economic Forum, Jan 2025](#))

Environmental Stewardship



Our Commitment:

We recognize that AI tools require significant energy and computing resources, contributing to environmental impact.

Goal:

Use AI **responsibly and thoughtfully**, aligning innovation with sustainability.

Our Approach at MESD:

- **Balance:** We promote human-centered, low-tech, and collaborative approaches when they are more sustainable or equally effective.
- **Efficiency:** We emphasize **strong prompt design** and **purposeful use**—using AI only when it truly adds value.
- **Tool Choice:** We discuss how different AI models vary in energy use and encourage selecting the **most sustainable option** for the task.
- **Awareness:** Educators and staff are learning about the environmental costs of AI during trainings.

AI Empowered EDU Conference



May 13, 2025 - University of Portland

- Second collaborative AI conference
- Partnership with CESD, NWRES, UP
- 335 attendees
- 29 Districts represented
- 45 speakers
- 33 Unique sessions
- Student Panel

Third Annual Conference set for May 2026

- **Conference Goal:** More student led or co-created sessions

Each session focuses on tools, strategies, and policies related to the following key themes:



AI for Inclusive and Impactful Education



Efficiency and Productivity



Ethical and Responsible AI Literacy



Leadership and Strategic Planning



Preparing Students for the Workforce

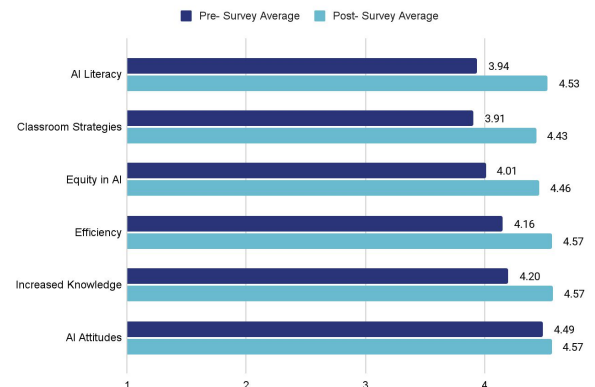
2024-25 SY AI Cohort: Pre/Post Survey Results



Domain	Pre-Survey Mean	Post-Survey Mean	Change	p-value	Interpretation
AI Literacy	3.94	4.53	0.59	$p < .001$	Significant improvement
Classroom Strategies	3.91	4.43	0.52	$p < .001$	Significant improvement
Equity in AI	4.01	4.46	0.45	$p < .001$	Significant improvement
Efficiency	4.16	4.57	0.41	$p = .0048$	Significant improvement
Increased Knowledge	4.20	4.57	0.37	$p < .001$	Significant improvement, confirmed via nonparametric test*
AI Attitudes	4.49	4.57	0.08	$p = .38$	No significant change; attitudes remained positive and stable.

Pre and Post Averages by Domain

(n= 29 matched responses)



Key Takeaways:

- Participants demonstrated the greatest growth in **AI Literacy (+0.59)** and **Classroom Strategies (+0.52)**.
- Results showed statistically significant improvement in all domains except AI Attitudes, which remained positive and stable
- These findings indicate that the professional learning effectively strengthened participants' AI literacy, ethical awareness, and classroom integration skills.