



Denton ISD Board of Trustees

Denton Enterprise Airport Update
September 12, 2017

Scott T. Gray, C.M., C.A.E.
Airport Manager

Denton Enterprise Airport
DFW Access... Extraordinary Business



- # Denton Enterprise Airport
- ## DFW Access... Extraordinary Business

1985

- Small, Outdated Terminal
- Six Commercial and Private Buildings
- 5,000' x 150' Runway
- 630 Acres



Denton Enterprise Airport
DFW Access... Extraordinary Business

Capital Improvements



- 1990 – Runway Extension (6,000' x 150')
- 2004 – Air Traffic Control Tower
- 2007 – Terminal Building Constructed
- 2008 – Taxiway Alpha Constructed
- 2009 – Terminal Ramp Expanded
- 2010 – Runway Extension (7,002' x 150')
- 2011 – Airport Rescue and Firefighting Vehicle
- 2011 – Terminal Ramp Expanded

Denton Enterprise Airport
DFW Access... Extraordinary Business

2013

- 45 Ground Leases
- 29 Businesses
- 410 Based Aircraft
- 7,002' x 150' Runway
- 700 Acres



Denton Enterprise Airport
DFW Access... Extraordinary Business

2017

- 80 Ground Leases
- 30 Businesses
- 355 Based Aircraft
- 7,002' x 150' Runway
- 930 Acres



Google Earth

Denton Enterprise Airport
DFW Access... Extraordinary Business

Economic Impact

- Approximately 853.9 Jobs
- \$34.2 M Payroll
- \$148.8 M Goods/Services



Denton Enterprise Airport
DFW Access... Extraordinary Business

7th Busiest Airport In Texas



- 150,000 Operations Per Year
- 4th Busiest Contract ATCT
- 89th Busiest Airport in the U.S.

Denton Enterprise Airport
DFW Access... Extraordinary Business

Service Providers

- **US Jet Center**
- **US Aviation Academy**
- **Greenpoint Aerospace**
- **Alliance Air Charter**
- **24 Other Businesses**



Denton Enterprise Airport
DFW Access... Extraordinary Business

US Jet Center



Denton Enterprise Airport
DFW Access... Extraordinary Business

US Aviation Academy



Denton Enterprise Airport
DFW Access... Extraordinary Business

Greenpoint Aerospace



Denton Enterprise Airport
DFW Access... Extraordinary Business

Alliance Air Charter



Denton Enterprise Airport
DFW Access... Extraordinary Business

City Structure

- Airport Business Plan – 2010
- Enterprise Fund – 2010/11
 - Strive towards Financial Self-sufficiency
 - Operates more like a business
- Division of the Transportation Department
- \$1.7 M Operating Budget
- Six (6) Full Time Employees



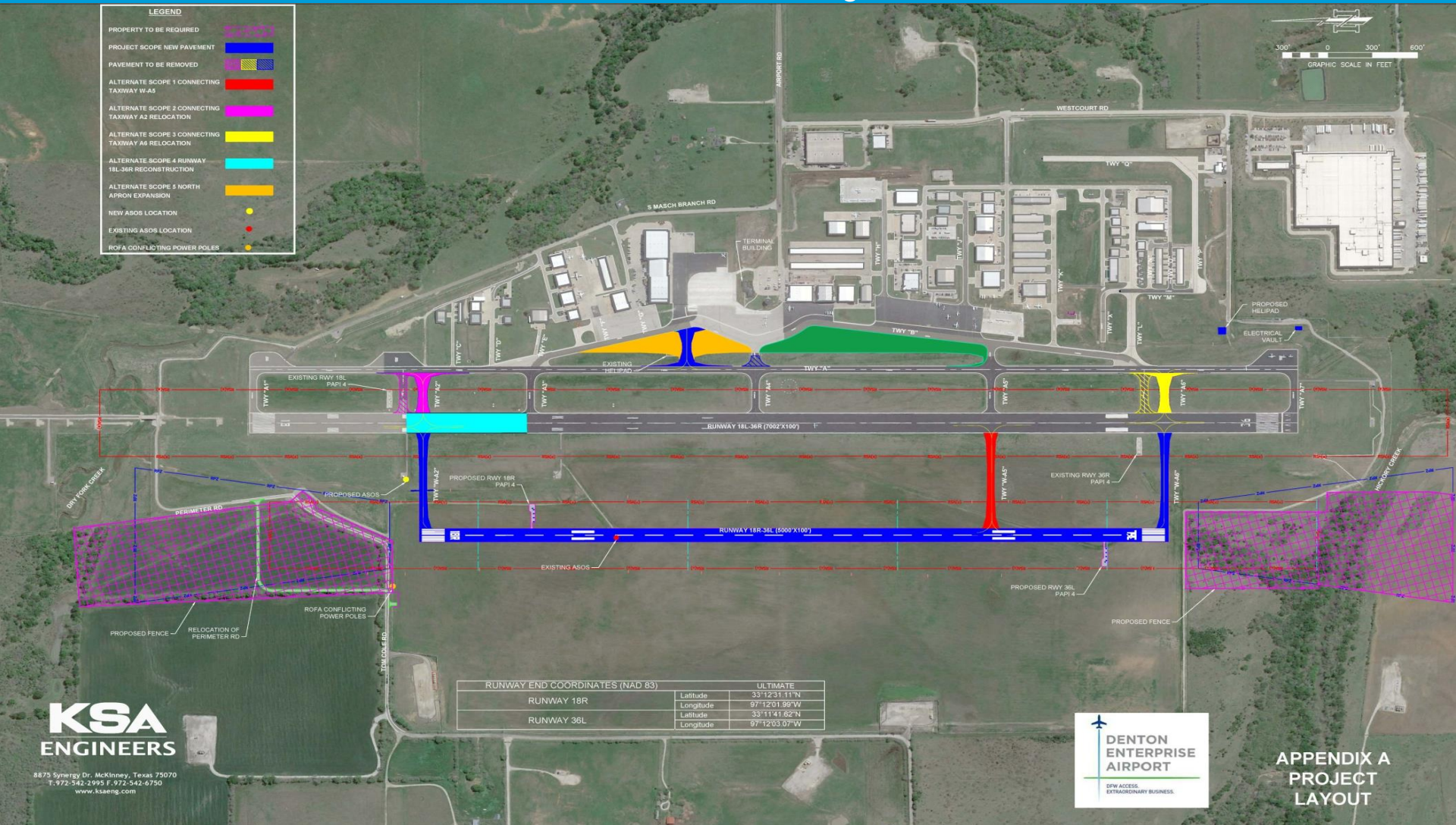
Development Opportunities

- 356,000 SF in Negotiations
- 386,000 SF Available



Denton Enterprise Airport
DFW Access... Extraordinary Business

West Parallel Runway



Denton Enterprise Airport
DFW Access... Extraordinary Business

Questions?



Denton Enterprise Airport
DFW Access... Extraordinary Business