

Proposed Boundaries Beginning 2025-26

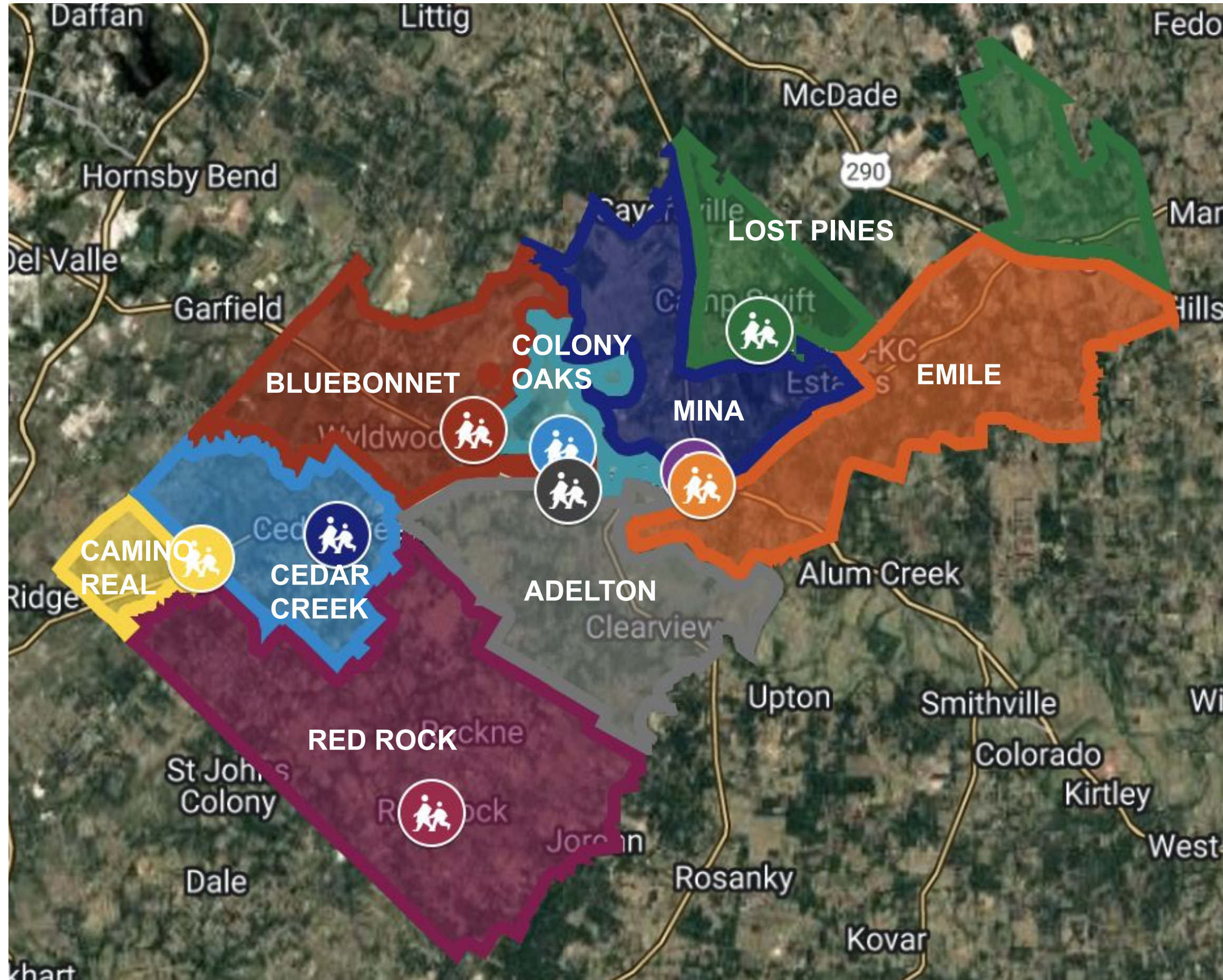
Dr. Kristi Lee
Deputy Superintendent



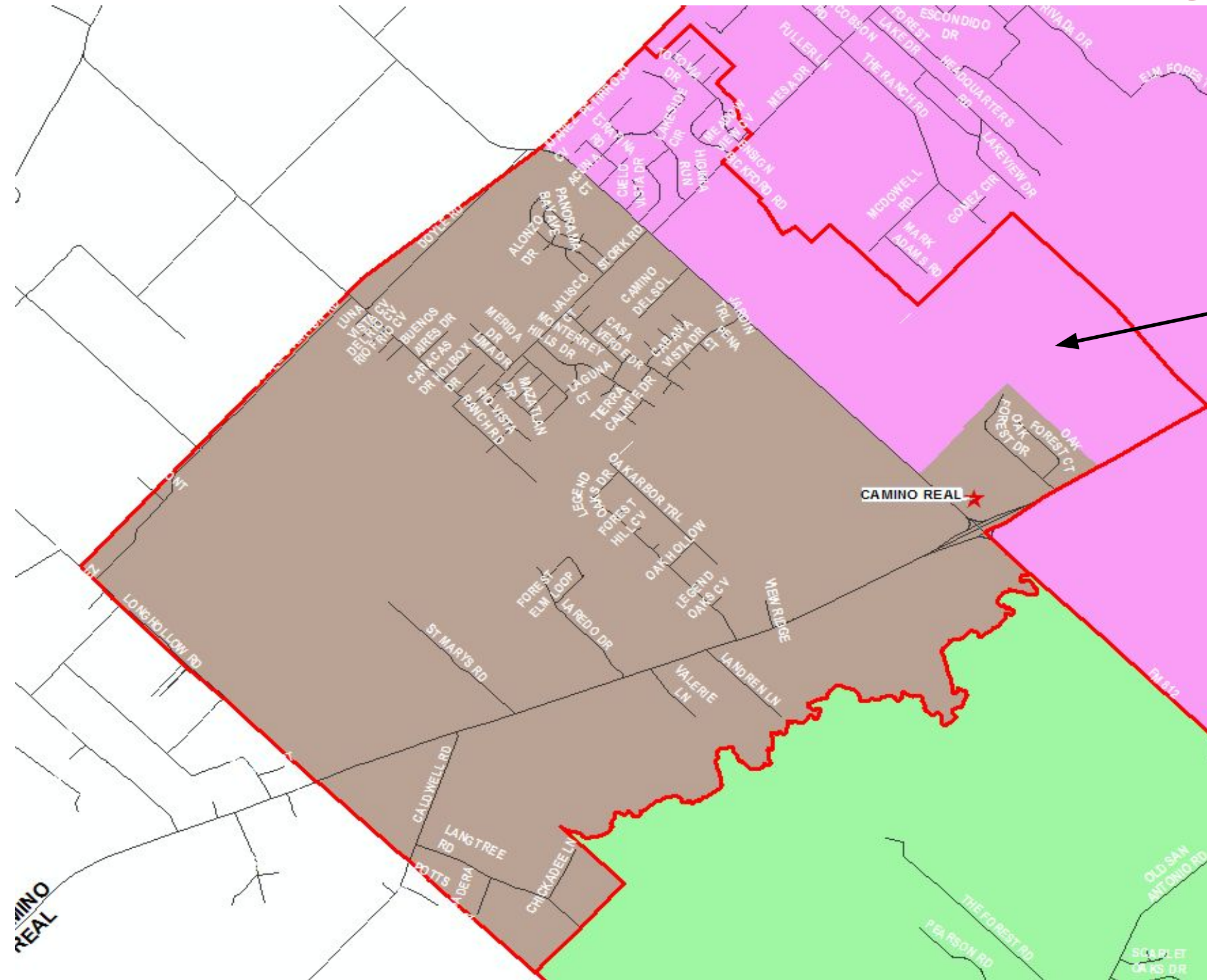
Summary of Changes

- New boundaries were created to factor in the 9th elementary (Adelton Elementary School)
- New boundaries were created to factor in the 3rd and 4th middle schools (Riverside and Creekside)
- Very minor adjustment was made to the high school boundary line

Elementary



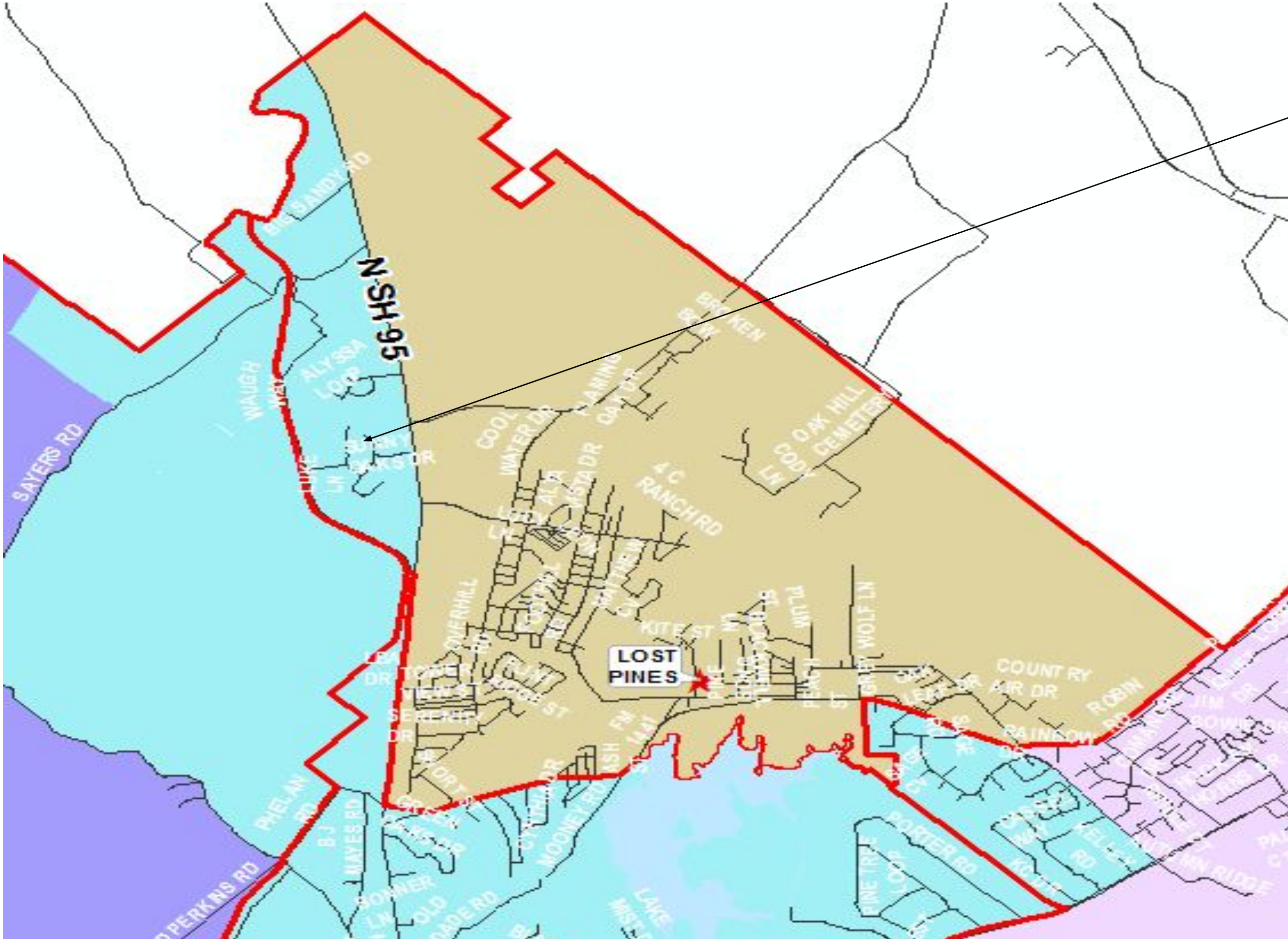
Camino Real Elementary



Moving to CCE

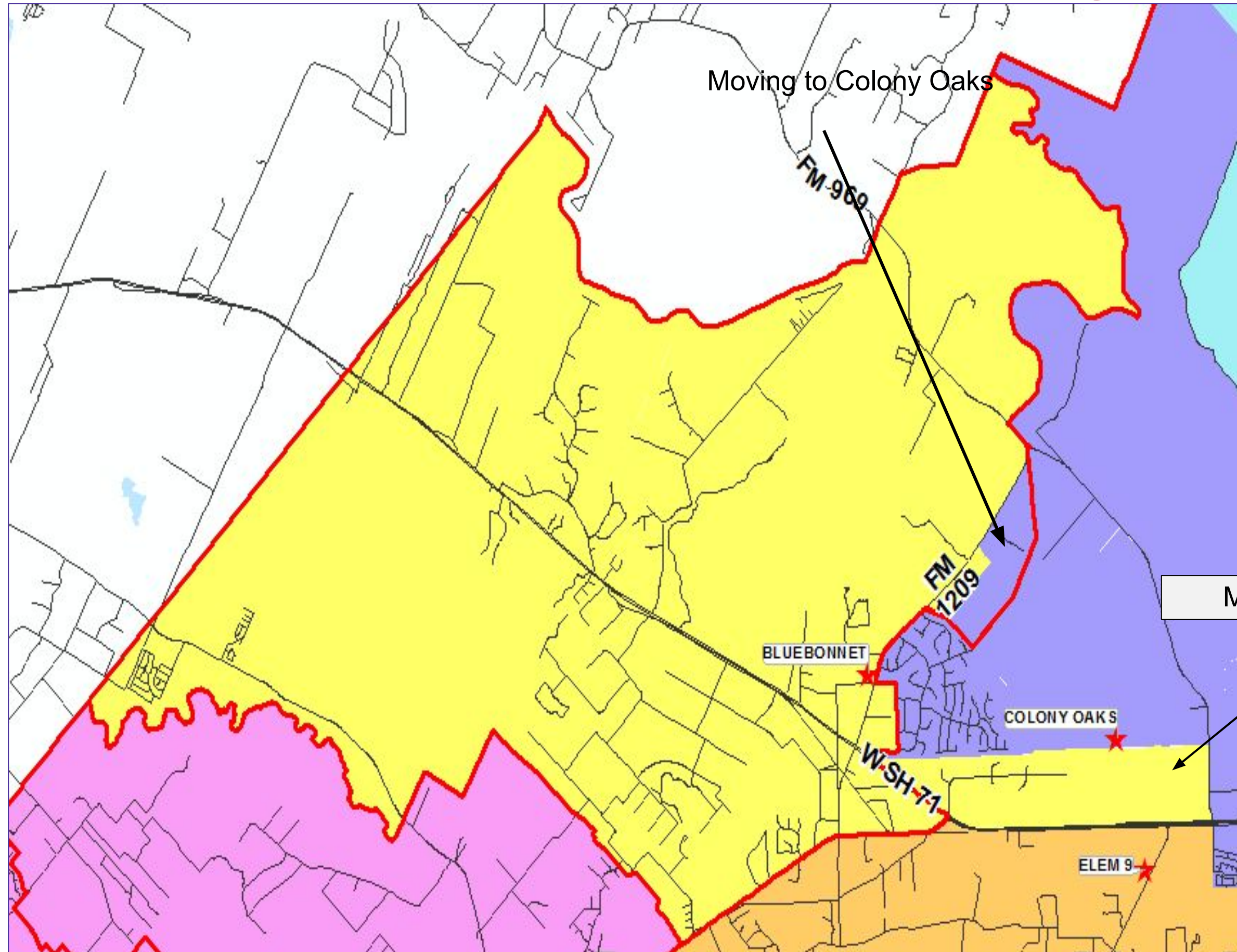


Lost Pines Elementary

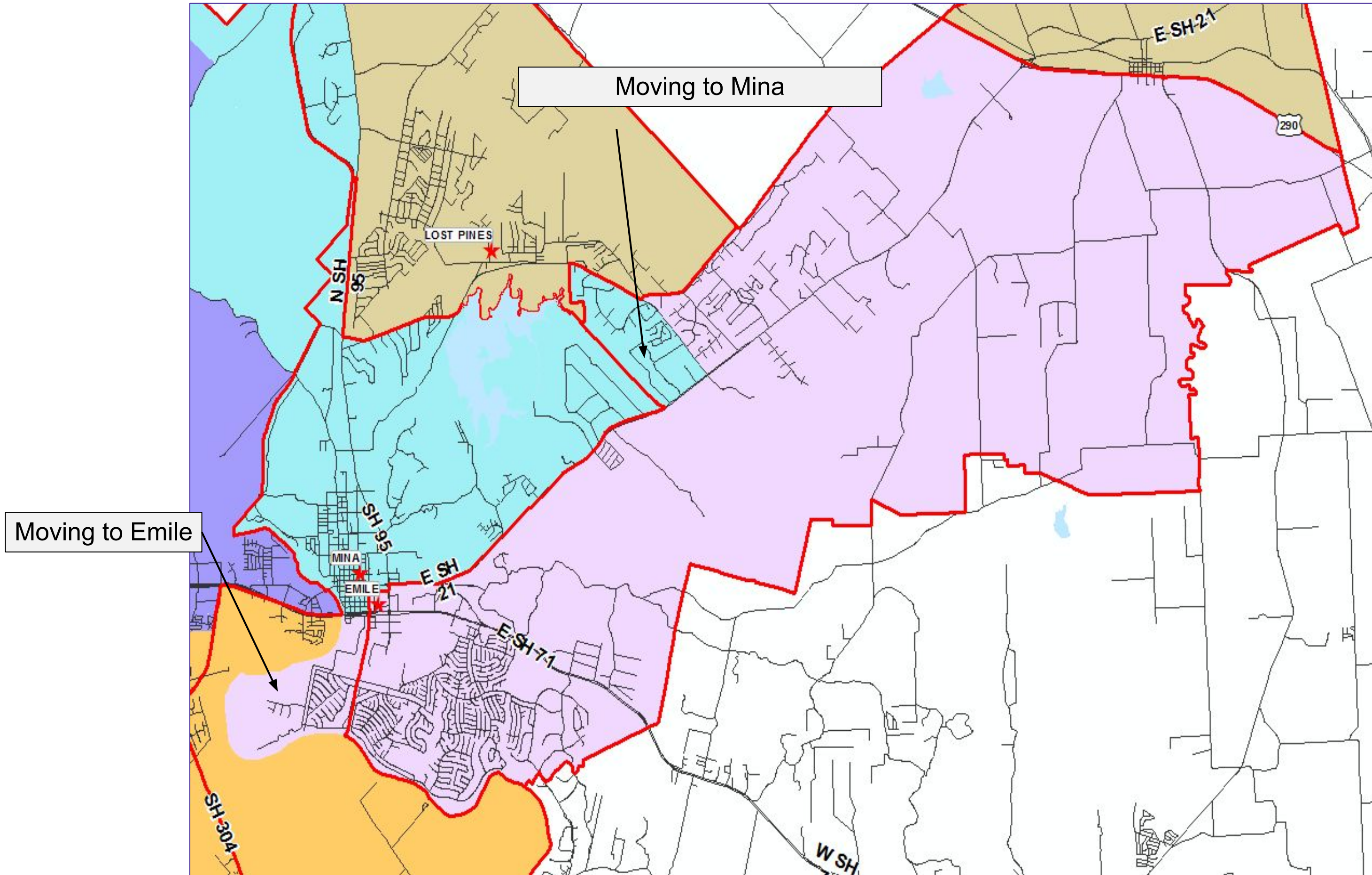


Moving to Mina

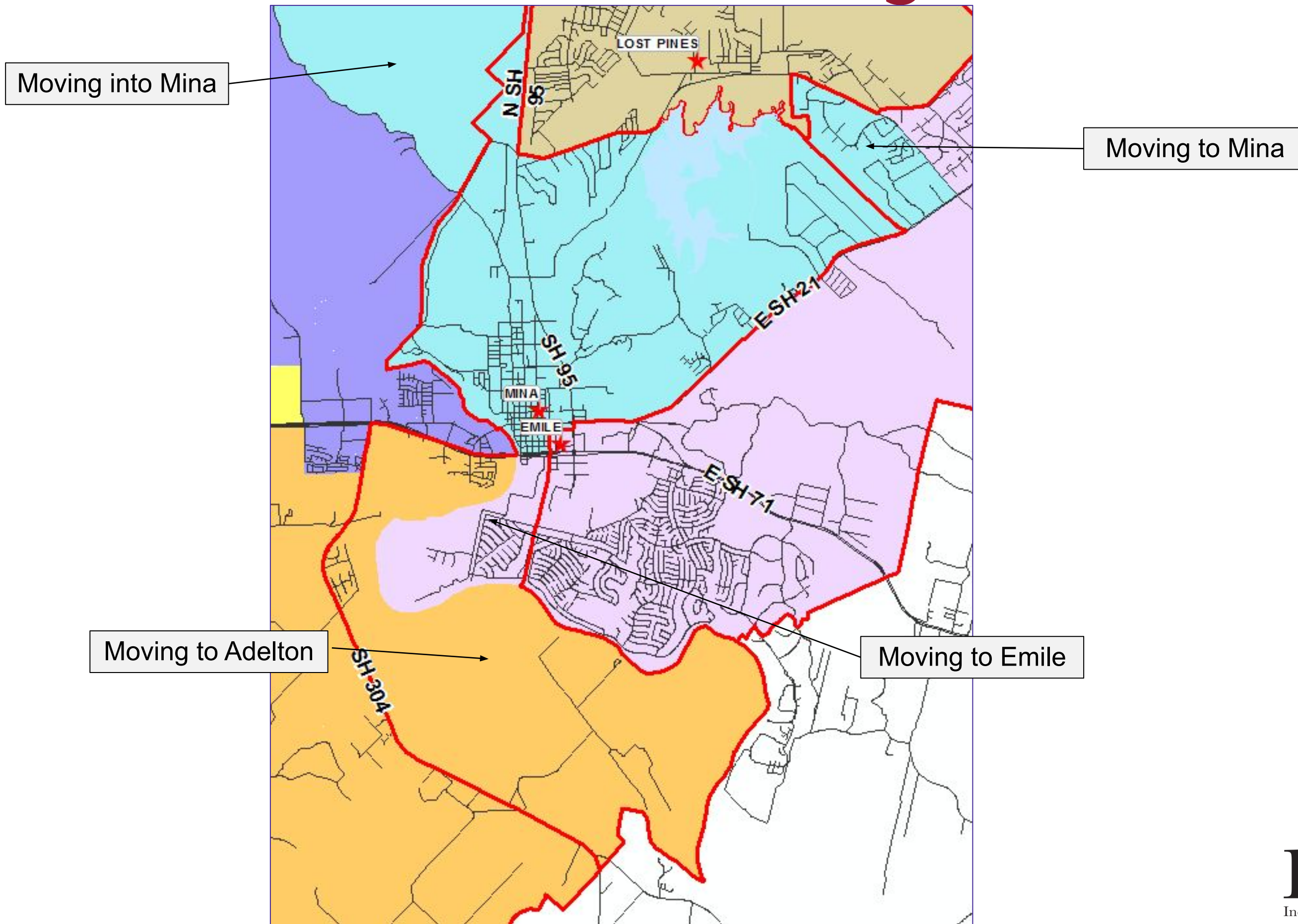
Bluebonnet Elementary



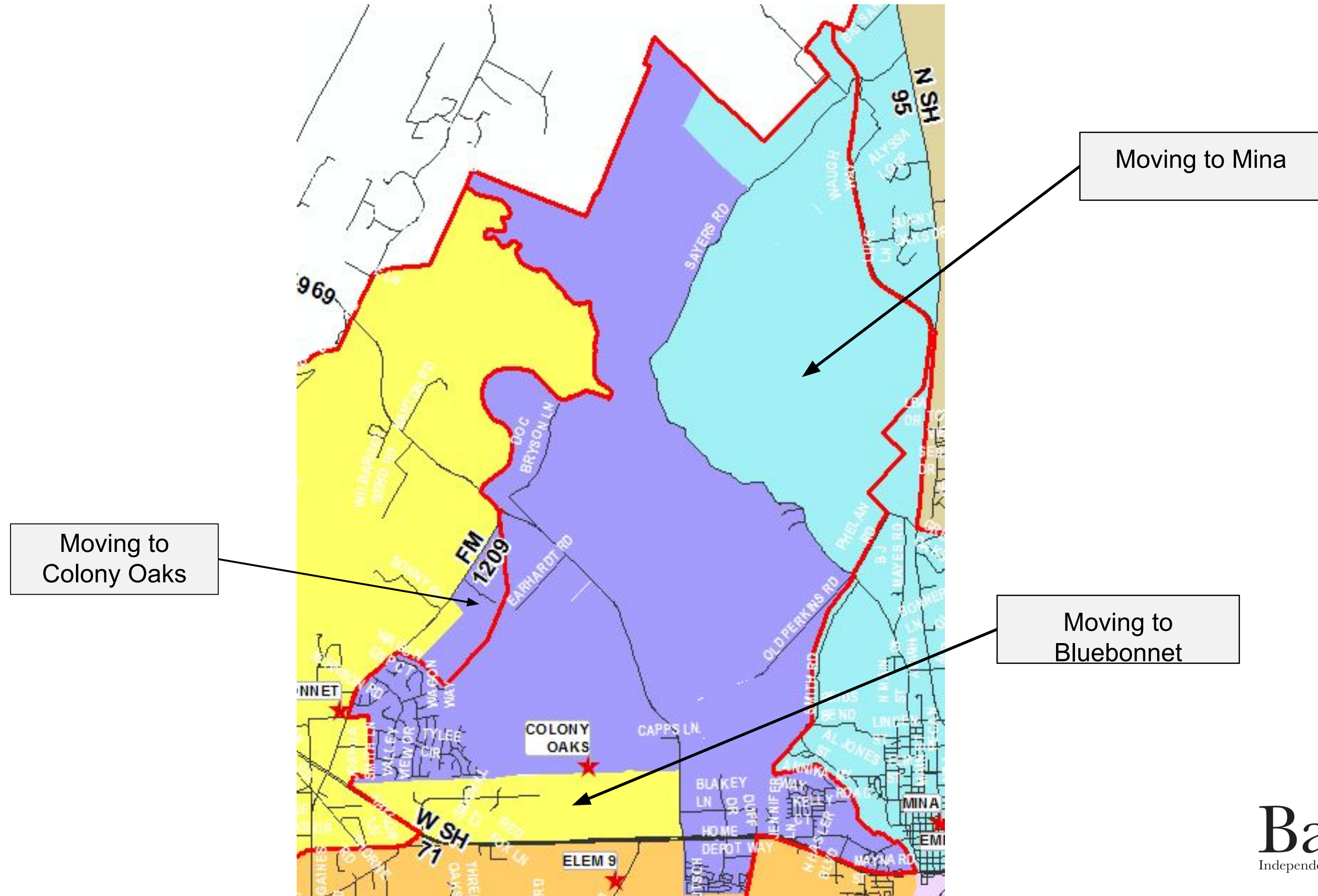
Emile Elementary



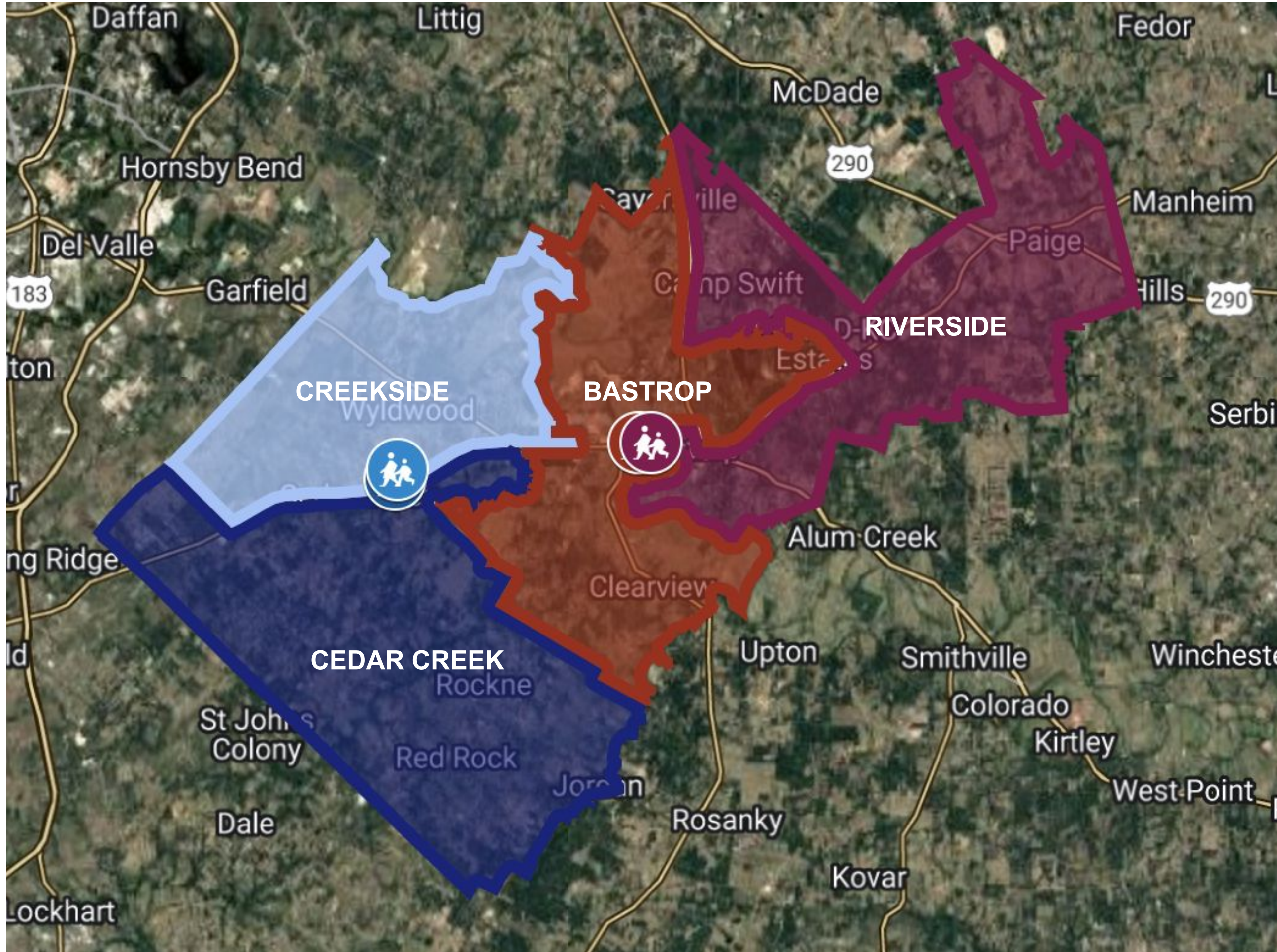
Mina Elementary



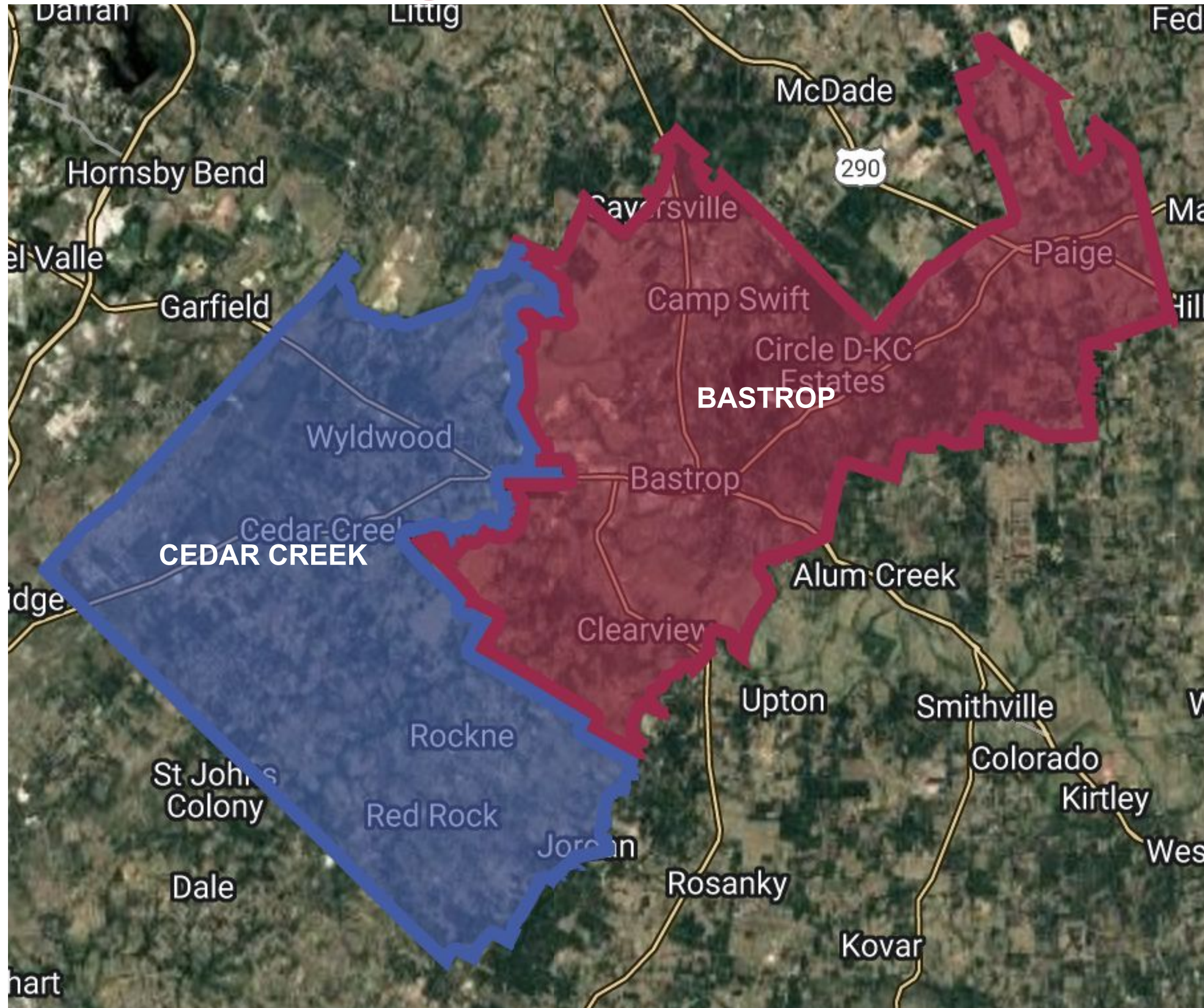
Colony Oaks Elementary



Middle School



High School



Projected Enrollment

ELEMENTARY	25-26	26-27	MIDDLE SCHOOLS	25-26	26-27
Adelton	515	556	Bastrop	624	719
Bluebonnet	801	832	Cedar Creek	810	831
Camino Real	734	730	Creekside	707	880
Cedar Creek	930	973	Riverside	689	768
Colony Oaks	637	742	<p>Elementary enrollment for 2026-2027 will change based upon the anticipated opening of elementary school #10.</p>		
Emile	674	704			
Lost Pines	799	802			
Mina	647	665			
Red Rock	781	787			

THANK YOU!

Are there any questions?

