



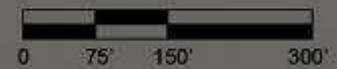
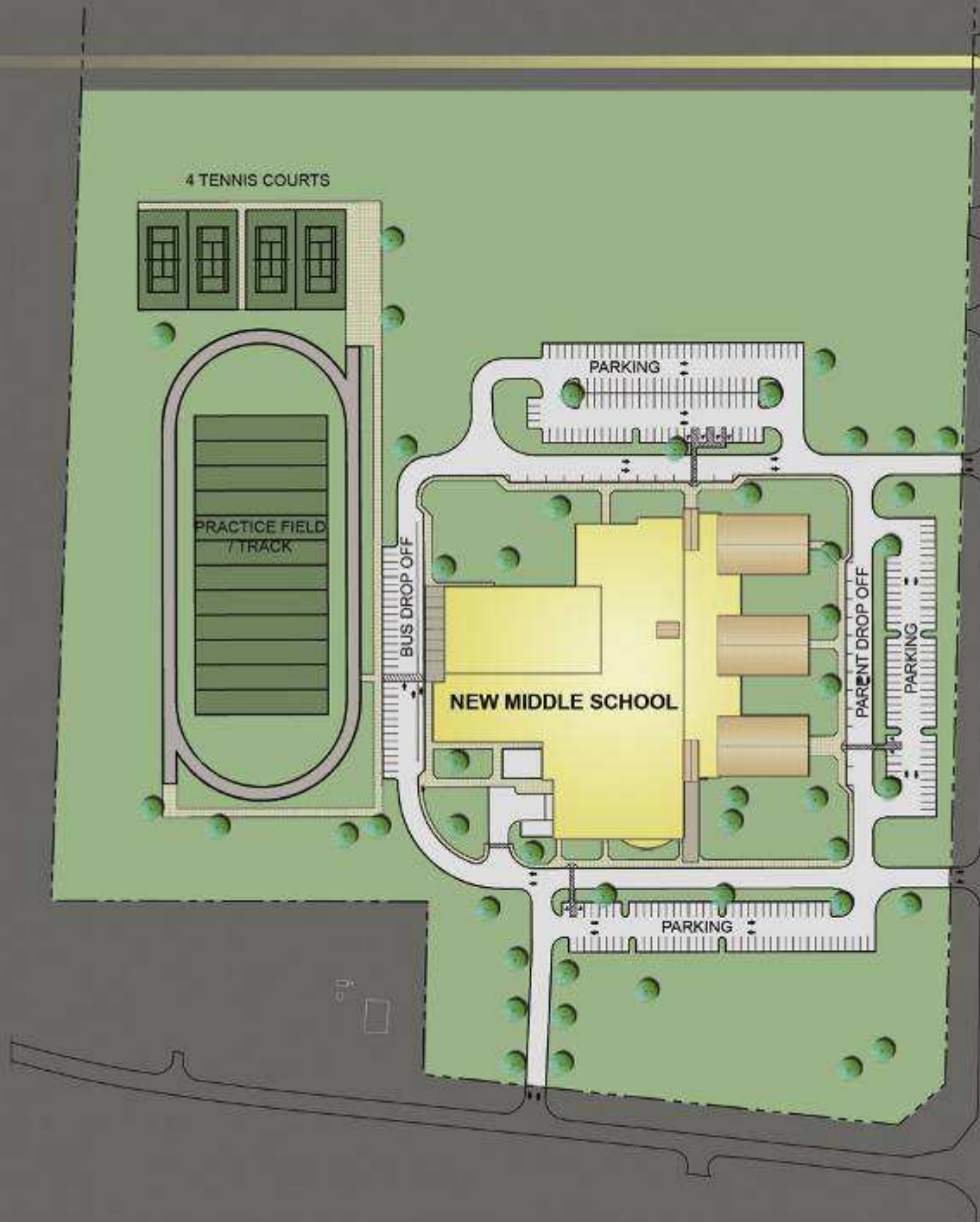
TOM HARPOOL MIDDLE SCHOOL

8401

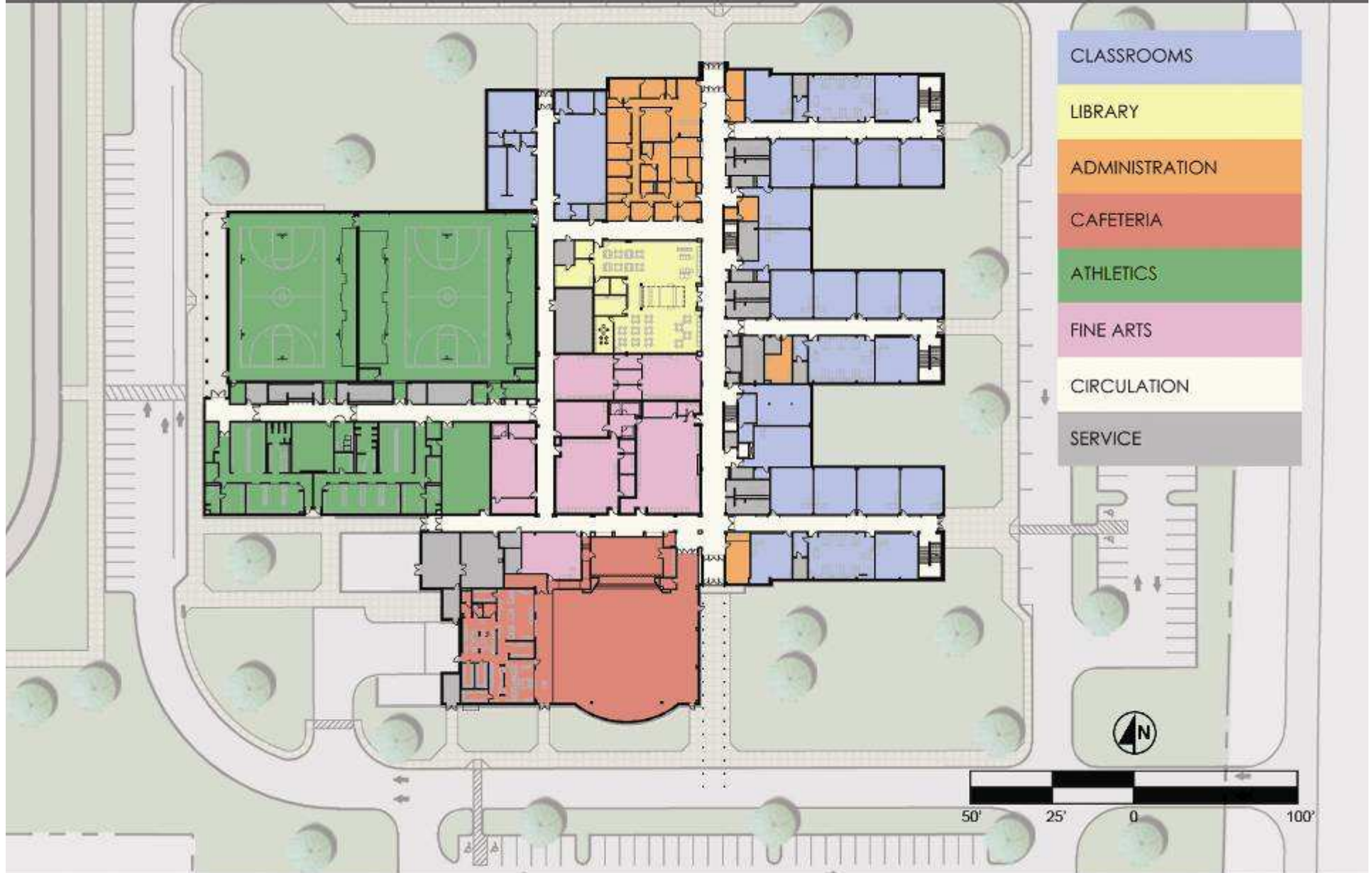


NEW MIDDLE SCHOOL

SITE PLAN



FLOOR PLAN – 1ST LEVEL



FLOOR PLAN – 2ND LEVEL



- CLASSROOMS
- ADMINISTRATION
- CIRCULATION
- SERVICE



MIDDLE SCHOOL NO. 7

164,300 s.f. prototypical design to be reviewed by Curriculum and Principals for modifications

Schedule:

Design:	January 2009 – October 2009
Bid:	November 2009
Board Approval of GMP:	December 2009
Construction:	January 2010 – June 2011
Opening for Students:	August 2011

Budget:

Construction funds from 2007 Bond: \$33,609,998.00

Sustainability Considerations:

Geo-thermal HVAC:	\$600,000.00 - \$850,000.00 (add) 7 – 12 year pay back
Thermally insulated windows:	\$80,000.00 - \$100,000.00 (add) 5 – 7 year pay back
Solar panel water heating:	viability is under investigation
Additional features will be investigated	

