



**PREMIER  
HIGH SCHOOL<sup>SM</sup>**

**Of Little Rock**

**Amendment  
Request**

**January 11, 2022**

**CHARTER AMENDMENT  
NARRATIVE**



# Charter Amendment Request From

The Charter Amendment Request Form and all required documentation must be received via email ([ade.charterschools@arkansas.gov](mailto:ade.charterschools@arkansas.gov)) at the Arkansas Department of Education at least 35 days prior to the Charter Authorizing Panel meeting.

**Charter Name:** Premier High School of Little Rock **LEA:** 6053700

**Superintendent or Director:** Rhonda Bradford

**Email:** rbradford@responsiveedar.com **Phone:** 501-472-0539

## Type of Amendment(s) Requested

**Add a New Campus** (Must also submit the Facilities Utilization Agreement)

Address: 3216 N. Stateline Road (Texarkana) | 1904 Grant Ave (Jonesboro)

School District: Texarkana School District | Jonesboro Public Schools

**Relocate Existing Campus** (Must also submit the Facilities Utilization Agreement)

Campus Name: \_\_\_\_\_

Current Address: \_\_\_\_\_

Proposed Address: \_\_\_\_\_

School District: \_\_\_\_\_

**Increase Enrollment Cap**

Current Cap: 250

Proposed Cap: 600

**Change Grade Levels Served**

Current Grade Levels Served: \_\_\_\_\_

Proposed Grade Levels Served: \_\_\_\_\_

## Premier High School Expansion Amendment Narrative

### Amendment:

- 1) Merge PHS-Fort Smith charter with PHS-Little Rock charter through charter license.
- 2) Add two satellite campuses in Jonesboro and Texarkana Arkansas to the charter license.
- 3) Increase enrollment Cap to 600 for charter license (PHS-Little Rock) to reflect the merger of the two (2) charters and additional campuses.

### Overview

Responsive Education Solutions, Inc (RES) submitted an open-enrollment public charter school application for Premier High School of Fort Smith to the Arkansas Division of Elementary and Secondary Education earlier this year. The application was approved by the Charter Authorizing Panel on August 17, 2021. RES is seeking charter licenses for PHS-Little Rock for the purpose of establishing another open-enrollment charter and merging the two (2) charter together under one district with two (2) separate buildings.

RES is seeking to merge the PHS-Fort Smith charter under the PHS-Little Rock charter. The district charter name will be PHS of Arkansas with a separate building local education agency (LEA). The current enrollment cap for PHS-Little Rock is two-hundred fifty (250) students and the current enrollment cap for PHS-Fort Smith is three-hundred (300) students. RES is seeking to increase enrollment cap for PHS of Arkansas to six hundred (600) to reflect merger of the two (2) charters.

RES was awarded a 2.8 million dollar federal CSP grant to serve communities with opportunity zones in the state of Arkansas and Texas. In Arkansas, the grant has allocated 1.4 million dollars (\$1,400,000,00) in CSP grant funds to support start-up costs associated with the

additional satellite campuses. RES has identified two (2) additional communities in Arkansas who would benefit from the innovative educational model Premier High School offers across the state. RES is seeking to expand to Jonesboro, AR and Texarkana, AR. The additional campuses will be added to charter licenses under Premier High Schools of Arkansas (formerly PHS-Little Rock). The two (2) satellite campuses will serve approximately sixty five to seventy-five students (65-75/campus). The satellite campus will serve those students who have dropped out or are at risk of dropping out of the local high school or educational programming. The satellite campuses will mirror brick and mortar Premier High School consisting of highly qualified and competent staff members, emergent technology and adequate instructional supplies and resources. With the support of CSP funds, state aid, and local support, the satellite campuses will provide students with a unique, personalized learning environment to meet their individual needs.

## **Rationale**

### **Charter Merger & Enrollment Cap**

Premier High School currently has four (4) separate charter agreements and four (4) separate campus LEA numbers that are issued by the State Education Agency (SEA). Creating a license charter will allow the district to transition to a uniform system that allows the district to have multiple sites instead of four (4) separate school districts. The benefits of this include, but are not limited to financial sustainability, data management systems, and organizational structure.

### **Charter Enrollment Cap Breakdown**

**Enrollment Cap Request:** 600 students

<b>PHS of Arkansas</b>	<b>Grades Served</b>	<b>Projected Campus Enrollment (FY23)</b>	<b>Projected Campus Enrollment (FY24)</b>
PHS Little Rock	9-12	135	150
PHS Fort Smith	9-12	135	150
PHS Jonesboro	9-12	75	85
PHS Texarkana	9-12	75	85
<b>Total</b>		<b>420</b>	<b>470</b>

**Satellite Locations**

The satellite campuses will support the need identified and community interest in a Premier High School. RES has received local support from parents, local business owners, current students, and community leaders in opening a Premier High School in Texarkana, AR and Jonesboro, AR. The current data in both districts indicate that there is a population of students who are leaving high school without a high school diploma. The data also indicates that there is a population of students who aren't engaged in the current educational setting. As a result, these students have chronic absenteeism and additional indicators that are prohibiting them from being successful in high school. The satellite campuses will partner with local high school, community agencies, and community members to provide a personalized learning environment for these students. The additional campuses will provide additional innovative

educational models and opportunities to communities in Arkansas. Ultimately, the expansion of Premier High School will continue to serve Arkansas students who are most at risk.

### **Impact of Expansion**

The additional campuses will be located within the city limits of Texarkana, Arkansas, in Miller county and Jonesboro, Arkansas, in Craighead County. The focus of the campuses will be reaching students in the community who have made the decision to drop out of high school.

Additionally, the program is offered as an option for those considered “at risk” of dropping out.

According to the US Census Data, the opportunity zone in Texarkana and Jonesboro is located in the heart of the community. Reviewing this data, ResponsiveEd feels that this part of the community is most at risk and in need of an additional educational opportunity. The effect on enrollment for surrounding school districts will be minimal as Premier High School will primarily be composed of those who have decided to leave the traditional public school system. However, as an open-enrollment public charter school, any eligible student from the community who decides to enroll at Premier High School may do so. It is expected that at capacity, up to 100 students will come from the local school district and surrounding school districts.

The Premier model brings the portion of our mission statement “provide HOPE to students” alive. Personalized learning is at the core of this school and begins with the personalized plan established the moment students walk through the door. With protocols in place such as goal setting, individualized learning plans, graduation projection plans, post-secondary goal plans, extended day services and exposure to college campuses, Premier High School is committed to assisting students in accomplishing not only their goals but their dreams. Premier High School will strive to employ committed adults that approach their job with passion and work every day

to make a difference in their students. Premier is unique and therefore the staff must think outside the box using innovation and best practices to serve our students and community. Premier High School staff works as a professional learning community in order to meet an individual student's needs. Premier High School will routinely reexamine the mission and put protocols in place to ensure each student that graduates from Premier High School leaves with a post-secondary plan.

The distinguishing characteristics of the academic program at Premier High School will include serving grades 9-12 utilizing personalized, self-directed, and accelerated curriculum options. Learning through the use of emergent technology will be emphasized at Premier High School, as evidenced by a 1:1 student to computer ratio and the use of online, interactive curriculum for all core courses. Highly qualified educators facilitate the learning process, provide learning resources, and ensure students learn and progress effectively.

## **Purpose**

The purpose of the proposed charter school is to facilitate cooperation between Premier High School and the community of Texarkana and Jonesboro, to:

1. Improve student learning outcomes;
2. Increase the choice of career pathways and industry based certifications provided to students
3. Partner with community business leaders and community leaders to enhance workforce and college readiness
4. Decrease the drop-out rate and increase the completion rate;
5. Enhance educational programming; provide an increase in the portfolio of educational options and choice in program design in Arkansas through the introduction of:
  - a. Extended and flexible time options;
  - b. Personalized learning achieved through diagnostic testing;
  - c. Small learning communities.

## **Other Program Distinctives**



## **Emergent Technology**

Premier High School will have an innovation classroom that will be equipped with emergent technology to provide students with hands-on career technical education through innovative hardware and software such as 3D printers, Zspace devices, and virtual reality headsets. The Innovation Hub will be used to increase students' engagement and enhance learning opportunities through project based learning and CTE opportunities.

## **Industry Based Certifications**

### **Purpose of Industry Based Certifications**

Our goal at Premier High School is to prepare students for high-wage, high-demand, high-skill careers by providing a coherent sequence of learning experiences which lead to one or more Industry-Based Certifications. Each IB offered at Premier High School must meet the following criteria to be considered:

**Industry Recognized:** Recognition through a national or international business, industry, professional organization, state agency, government entity, or state-based industry association.

**Capstone:** Represents a culmination of knowledge and skills achieved through completion of a course or sequence of courses in a high school career and technical education program.

**Stackable:** Attainable by high school students and transfers seamlessly to post-secondary work through acceptance for credit or hours at an institution of higher education or to additional industry certifications and opportunities through acceptance by industry as a validated credential for workplace entry and advancement.

**Valuable for Industry:** Demonstrates the skills and abilities necessary to secure entry into high-skill occupations as demonstrated through attributes such as high-wage jobs with growth potential.

Industry Based Certification Programs that are planned to be offered through local partners such as University of Arkansas-Hope, Texas A & M Texarkana, Arkansas State University, and Arkansas Workforce to offer industry based certifications

Certified Nursing Assistant  
Electrician  
Forklift Operator Certification

Security Officer  
 AR Department of Workforce Career Readiness Certification (CRC) certificate  
 Engineering Design & Production Lab  
 Automotive Collision Repair  
 Automotive Service Technology  
 Computer Science - Networking  
 Welding Technology  
 Culinary Arts  
 Hospitality Management / Culinary Arts  
 HVACR  
 Medical Professions/CNA  
 Medical Professions  
 Drones-Unmanned Aerial Systems (UAS)  
 Robotics & Automation Technologies

**Potential Business & Community Partners in Texarkana & Jonesboro**

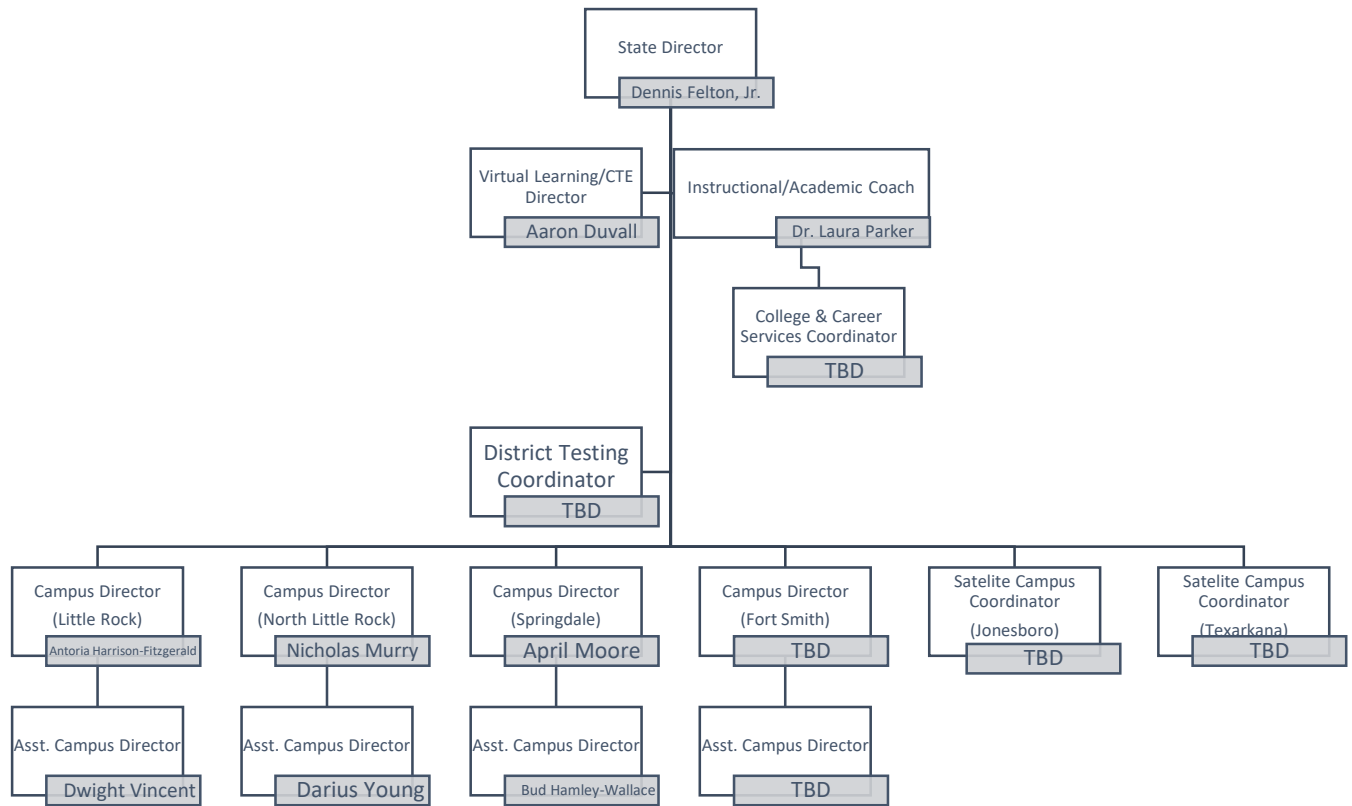
University of Arkansas-Texarkana	Wadley Regional Medical Center
Texarkana College	St. Bernards Medical Center
Goodwill Industries of Arkansas	Texarkana Arkansas Career & Technological Center
Riceland, Inc	Cosmetology Academy of Texarkana
Texarkana Boys & Girls Club	Jonesboro School District
Walmart Department Stores	Arkansas State University
Southwestern Electric Power Company	Razor Dogs
Nestle Foods, Inc	Juvenile Justice Department
City Youth	Northeast AR Technical Institute

**Partnership with Local Texarkana ISD & Jonesboro ISD**

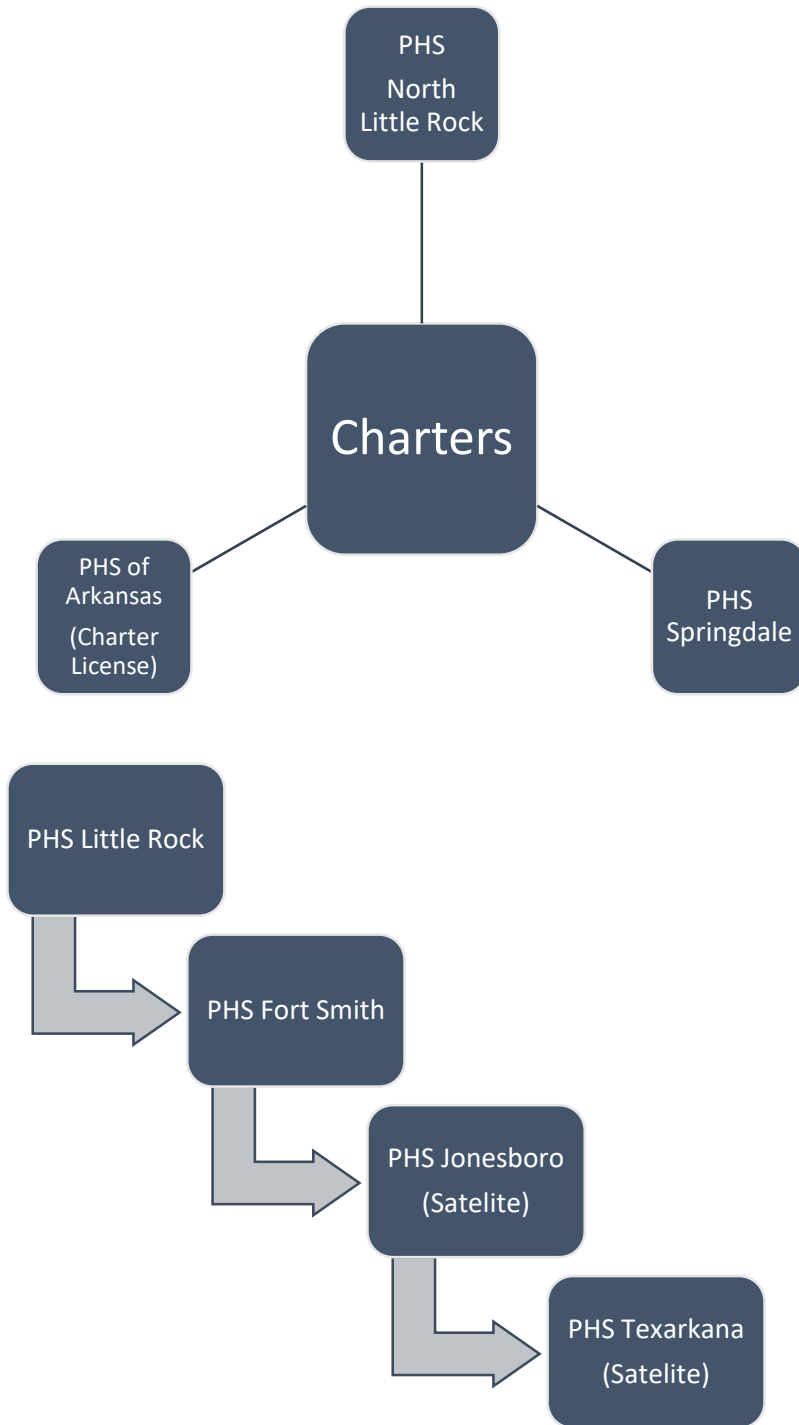
**Opportunities for District and Premier High School Partnership**

- Intervention for high school dropouts (students not currently enrolled in any high school program)
- Increase graduation rate for 4 year cohort and year 5 cohort by getting student back on track to graduate

- Collaborate to provide alternative programs for ALE students through PHS (instruction, onboarding, professional development, curriculum)
- Collaborate with high school to provide additional CTE pathways and certifications for PHS - School district CTE & Premier CTE, sharing resources & programs
- Collaborate through professional development to provide “staff with high quality professional development for “at-risk” students.”



**Premier High Schools of Arkansas  
Leadership Organization Chart**



**Premier High Schools of Arkansas**  
**Charter Structure**

# **BUDGET**

**RESPONSIVE ED ARKANSAS- PREMIER HIGH SCHOOL OF LITTLE ROCK COMBINED PROJECTION**

**Campus Operating Budget - Three Year**

	ADM	YR 1 - 2022-23 385	YR 2 - 2023-24 420	YR 3 - 2024-25 435
REVENUE		<u>Total</u>	<u>Total</u>	<u>Total</u>
Revenue per ADM	\$	7,349	\$ 7,475	\$ 7,604
Facility Funding	\$	198,883	\$ 198,883	\$ 216,964
Foundation Funding		2,829,365	3,139,500	3,307,740
Professional Development		13,860	15,120	15,660
CNP Funding		48,125	52,500	54,375
<b>TOTAL Revenue</b>	<b>\$</b>	<b>3,090,233</b>	<b>\$ 3,406,003</b>	<b>\$ 3,594,739</b>
<b>EXPENDITURES</b>				
61000 - Personal Services - Salaries				
Total 61000 - Personal Services - Salaries	\$	1,313,360	\$ 1,339,627	\$ 1,366,420
62000 - Personal Services - Employee Benefits				
Total 62000 - Personal Services - Employee Benefits	\$	367,741	\$ 375,096	\$ 382,598
63000 - Purchased Professional and Technical Services				
Total 63000 - Purchased Professional and Technical Services	\$	328,327	\$ 545,075	\$ 572,929
64000 - Purchased Property Services				
Total 64000 - Purchased Property Services	\$	513,400	\$ 513,400	\$ 513,400
65000 - Other Purchased Services				
Total 65000 - Other Purchase Services	\$	107,955	\$ 110,860	\$ 112,105
66000 - Supplies & Materials				
Total 66000 - Supplies and Materials	\$	278,333	\$ 295,636	\$ 303,051
67000 - Property				
Total 67000 - Supplies & Materials	\$	12,000	\$ 12,000	\$ 12,000
68000 - Other Objects				
Total 68000 - Other Operating Costs	\$	21,389	\$ 23,333	\$ 24,167
<b>TOTAL Expenditures</b>	<b>\$</b>	<b>2,942,505</b>	<b>\$ 3,215,027</b>	<b>\$ 3,286,669</b>
<b>Net Carryover</b>	<b>\$</b>	<b>147,729</b>	<b>\$ 190,977</b>	<b>\$ 308,070</b>

**FACILITIES UTILIZATION  
AGREEMENTS**



# Facilities Utilization Agreement

To be completed and submitted with an amendment request to add a new campus or relocate an existing campus

Lessor (Owner): Range Land, LLC

Lessee (Tenant): Responsive Education Solutions, Inc.

Information regarding affiliation, family ties or other relationships between the Lessor and Lessee:  
RES is a Texas 501(c)(3) non-profit corporation

no affiliations

Address of Premises: 3216 North Stateline Avenue, Texarkana, AR 71854

Describe the present use of the facility: Vacant

Square Footage: 8,156 sqft Rental Amount: \$4,078

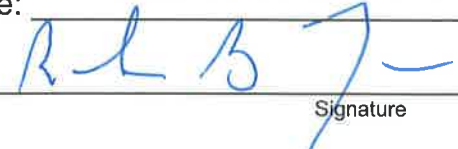
Terms of Lease: Lease execution to June 30, 2027 Rent includes CAM, Real Estate Taxes & Ins.

**Contingency:** The terms of this agreement are contingent upon Premier High School of Texarkana Charter School receiving approval by the Authorizer to operate an open-enrollment public charter school at the premises identified.

No indebtedness of any kind incurred or created by the open-enrollment public charter school shall constitute an indebtedness of the State of Arkansas or its political subdivisions and no indebtedness of the open-enrollment public charter school shall involve or be secured by the faith, credit or taxing power for the state or its political subdivisions. An open-enrollment public charter school shall not incur any debt, including lease, without the prior review and approval of the Commissioner of Education.

We affirm that the facility is, or will be prior to charter occupancy, compliant with ADE/IDEA accessibility regulations and will remain so while the charter occupies the location.

Lessee: Responsive Education Solutions, Inc

By:  Date: 1-11-22  
Signature

Lessor: Range Land, LLC

By: \_\_\_\_\_ Date: \_\_\_\_\_  
Signature

# Facilities Utilization Agreement

To be completed and submitted with an amendment request to add a new campus or relocate an existing campus

Lessor (Owner): Robert Woods, Inc.

Lessee (Tenant): Responsive Education Solutions, Inc.

Information regarding affiliation, family ties or other relationships between the Lessor and Lessee:

RES is a Texas 501(c)(3) non-profit corporation ("Tenant") no affiliations

Address of Premises: 1904 Grant Avenue, Suites A, B, C, & D Jonesboro, AR 72401

Describe the present use of the facility: vacant

Square Footage: 6,000 sqft Rental Amount: \$5,500/month

Terms of Lease: Rent includes Common Area Maintenance, Real Estate Taxes, & Shopping Cntr Ins

**Contingency:** The terms of this agreement are contingent upon Premier HS of Jonesboro  
Charter School receiving approval by the Authorizer to operate an open-enrollment public charter school at the premises identified.

No indebtedness of any kind incurred or created by the open-enrollment public charter school shall constitute an indebtedness of the State of Arkansas or its political subdivisions and no indebtedness of the open-enrollment public charter school shall involve or be secured by the faith, credit or taxing power for the state or its political subdivisions. An open-enrollment public charter school shall not incur any debt, including lease, without the prior review and approval of the Commissioner of Education.

We affirm that the facility is, or will be prior to charter occupancy, compliant with ADE/IDEA accessibility regulations and will remain so while the charter occupies the location.

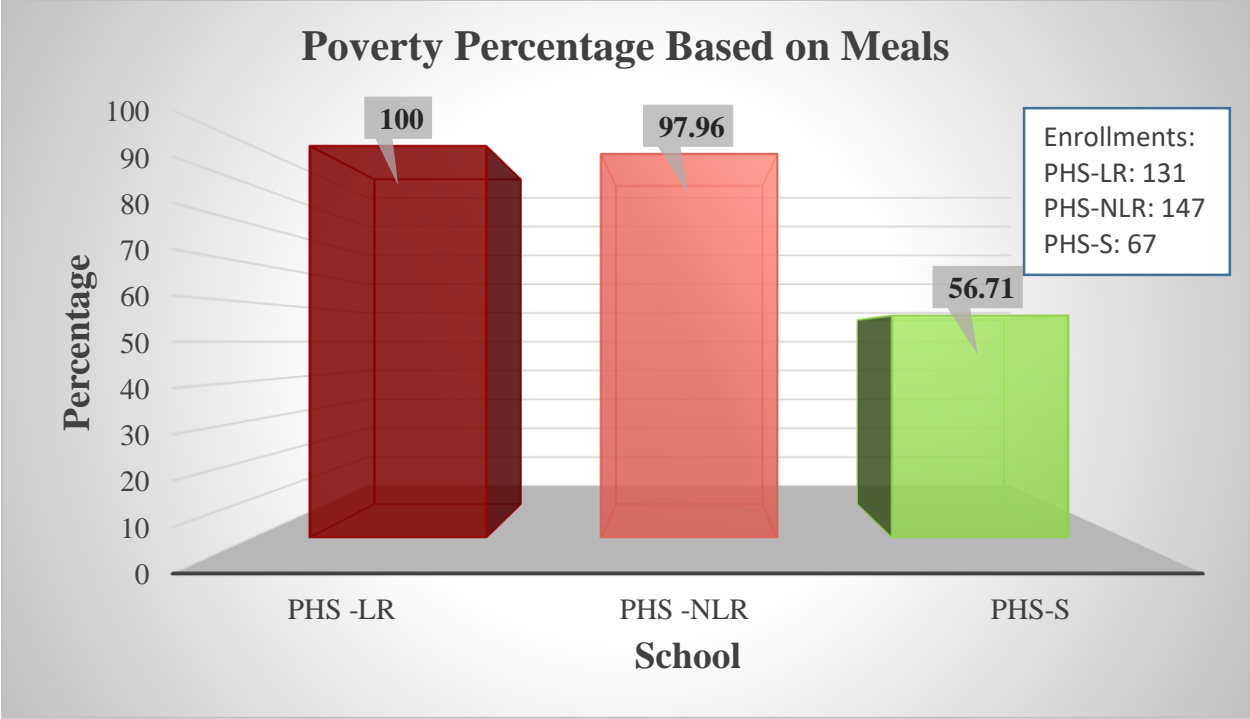
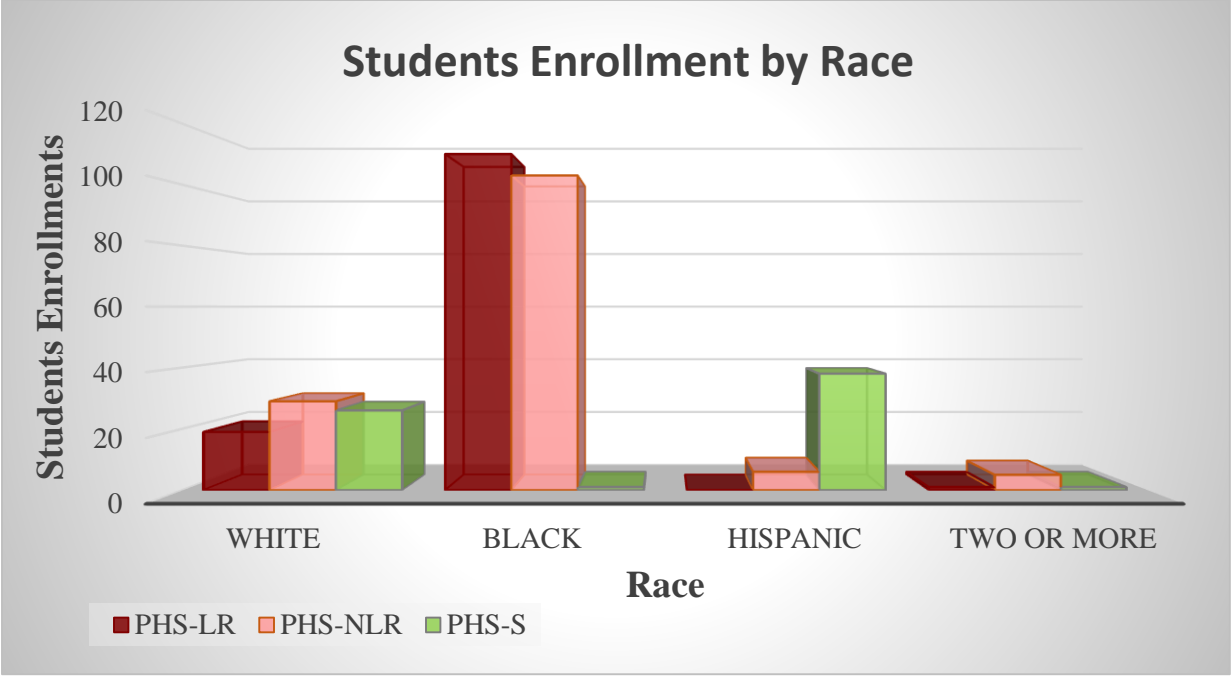
Lessee: Responsive Education Solutions, Inc.

By: \_\_\_\_\_ Date: \_\_\_\_\_  
Signature

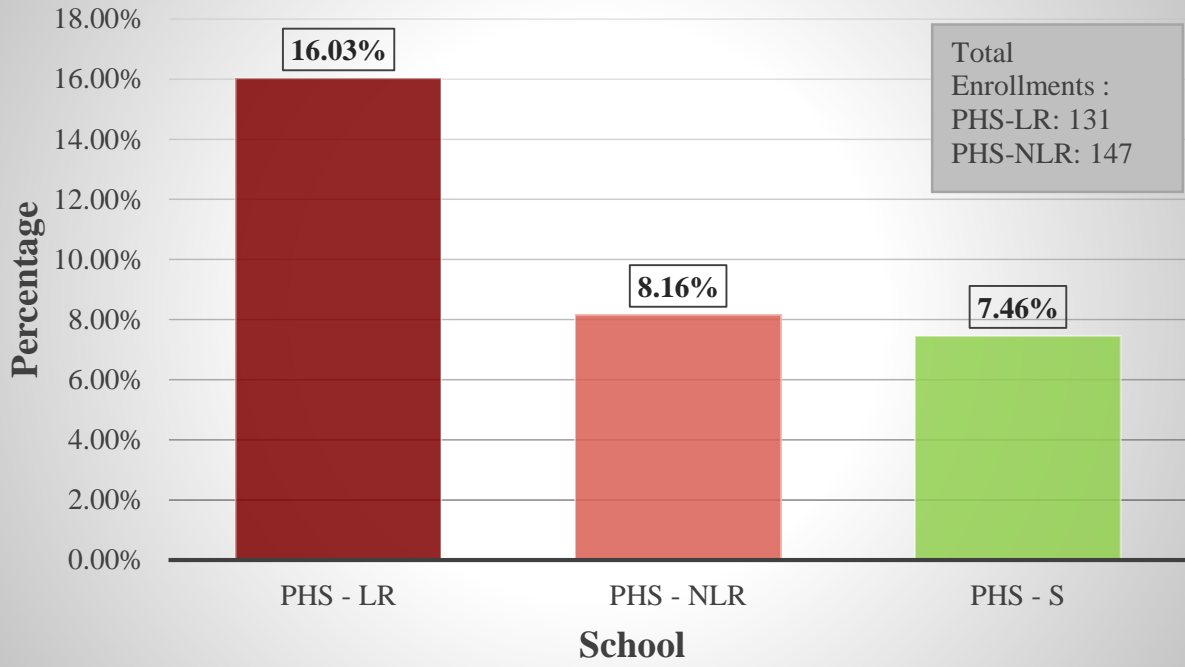
Lessor: Robert Woods, Inc.

By: \_\_\_\_\_ Date: \_\_\_\_\_  
Signature

**PREMIER HIGH SCHOOL  
CURRENT DEMOGRAPHICS**



### % of Students Receiving Special Services



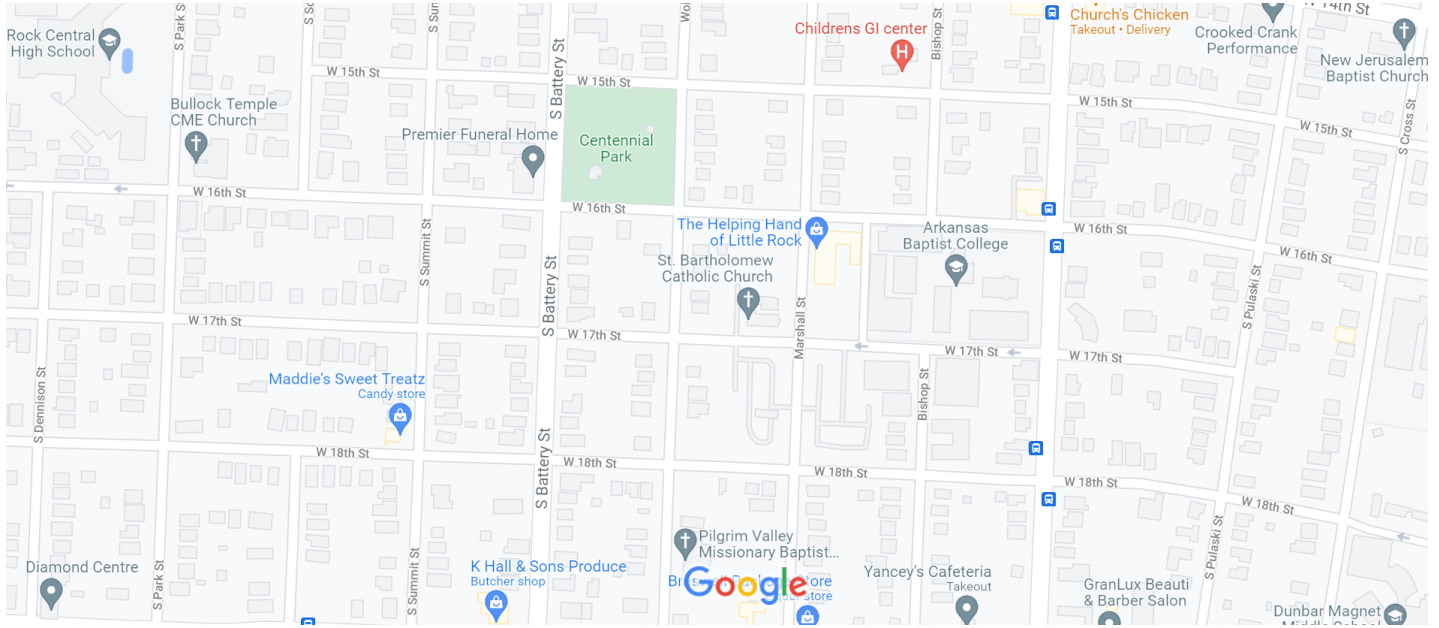
## **Current Locations**

**Little Rock**

**North Little Rock**

**Fort Smith**

**Springdale**



Map data ©2021 Google 200 ft

# Google Maps 801 W 29th St



Map data ©2021 Google 200 ft



## 801 W 29th St

Building



Directions



Save



Nearby



Send to your phone



Share

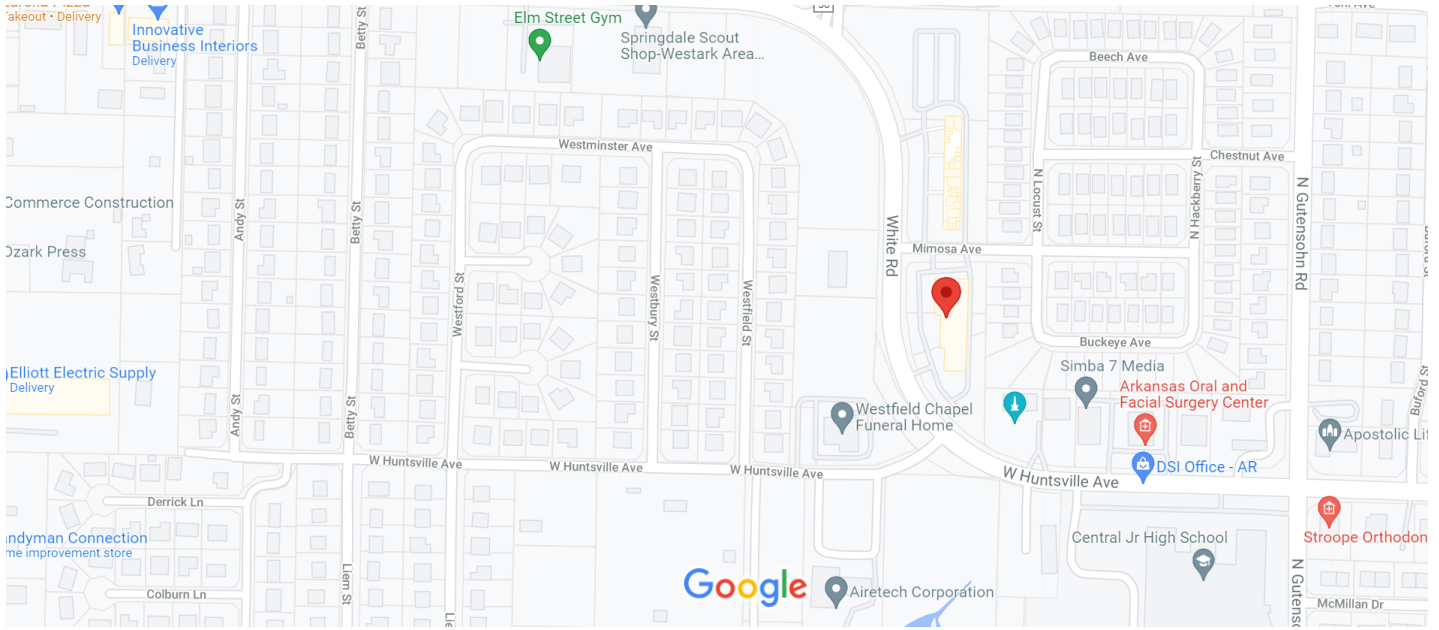


801 W 29th St, North Little Rock, AR 72114

## Photos



# Google Maps 603 White Rd



Map data ©2021 200 ft



## 603 White Rd

Springdale, AR 72762



Directions



Save



Nearby



Send to your phone

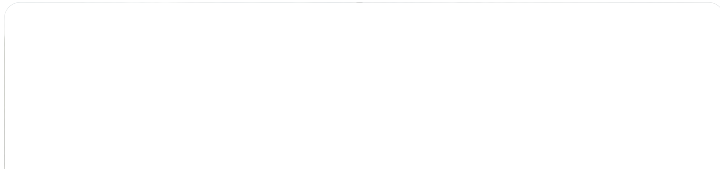


Share



Confirm or fix this location  
The location shown is not precise

## Photos



# **PROPOSED LOCATIONS**

**Jonesboro**

**Texarkana**

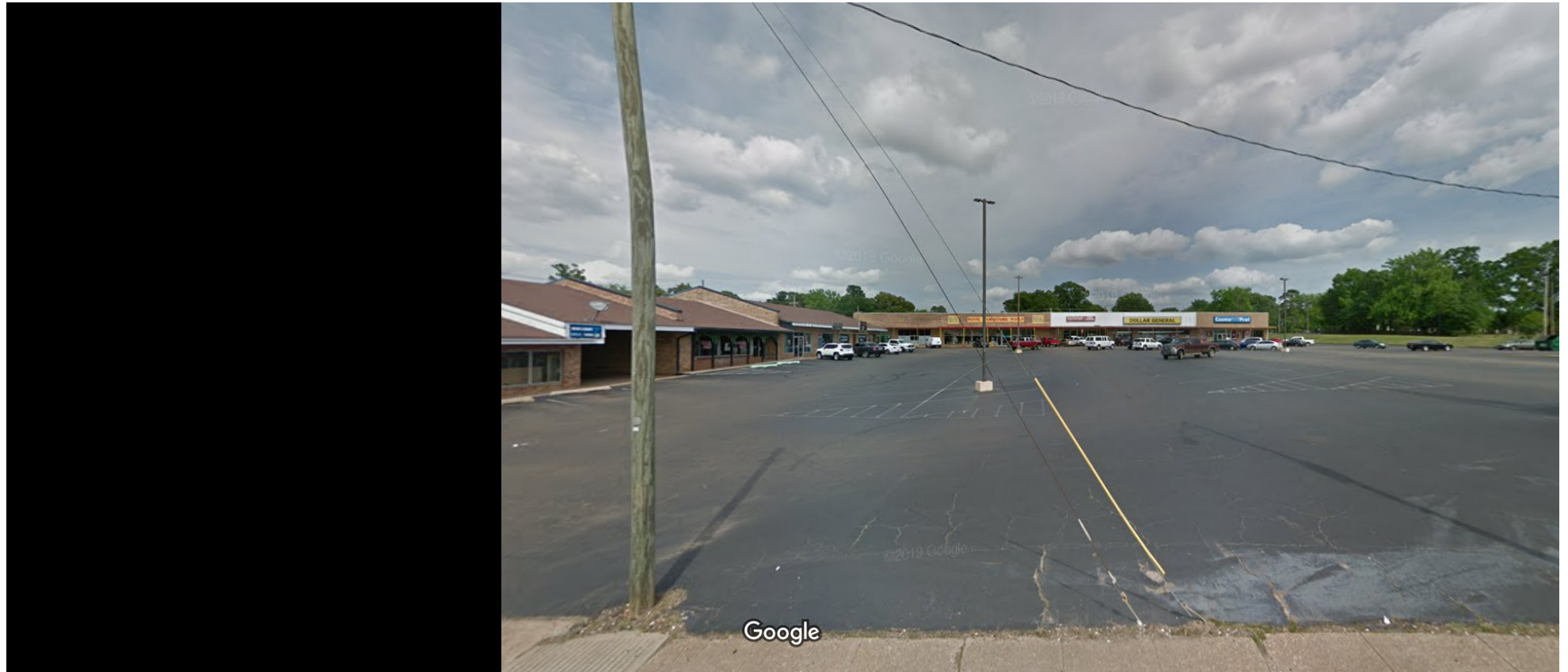


Image capture: May 2019 © 2022 Google

Texarkana, Texas

Google

Street View - May 2019

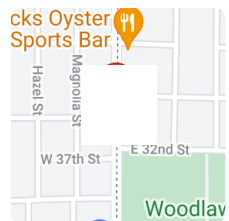




Image capture: Sep 2019 © 2022 Google

Jonesboro, Arkansas

Google

Street View - Sep 2019



Your Sales rep is: Brent Hopkins 870-330-7608  
My Fax # is:

Acct: 6023762 Name: Responsive Education Sc  
Phone: 501-419-9109 Address: 400 Hardin Road  
City: Little Rock Zip: 72211  
Paytype: BL Source: EM TFN:   
Rate: L1 Class: 4190 Legal Notices  
Days: 3 Rate Issues: 3 Start: Sun, Jan 02, 2022  
Editions: TXG/ Stop: Sun, Jan 16, 2022

Bold Charge 0.00 Words: 71 Price: 80.46  
Other charge 0.00 Lines: 18 Discount: 0.00  
Other charge 0.00 Depth: 1.61 Commission: 0.00  
Other charge 0.00 Columns: 1 Net Price: 0.00  
Other charge 0.00 Graphics: 0 Tax: 0.00

St Words: 2 Total: 80.46  
 Boxed Ad Applied Credit: 0.00

Copyline: ResponsiveEdResponsiveEduc  
On Hold:   
Product Code:   
Sort String:   
PO #:

Tear Sheets:

**ResponsiveEd**  
Responsive Education Solutions plans to submit an application to the State Board of Education to open a charter school in Texarkana, Arkansas to be referred to as Premier High School of Texarkana.  
**NOTICE OF PUBLIC MEETING**  
January 20, 6:00 p.m.  
Holiday Inn  
5200 Convention Plaza Drive  
Texarkana, Arkansas 71854  
All are welcome to join us to learn about Responsive Education Solutions and the opportunities we will bring to your community.

Ad shown is not actual print size  
Adid: 75501804

# **ResponsiveEd**

Responsive Education Solutions plans to submit an application to the State Board of Education to open a charter school in Jonesboro, Arkansas to be referred to as Premier High School of Jonesboro.

## **NOTICE OF PUBLIC MEETING**

January 27, 6:00 p.m.

Holiday Inn

2908 Gilmore Drive

Jonesboro, Arkansas 72401

All are welcome to join us to learn about Responsive Education Solutions and the opportunities we will bring to your community.

Note: Legal ad every Sunday



# PREMIER HIGH SCHOOL<sup>®</sup> JONESBORO



WE PROVIDE INDIVIDUAL ATTENTION THAT HELPS STUDENTS EARN THEIR HIGH SCHOOL DIPLOMA.

## CALL FOR MORE INFORMATION

on how Premier High School prepares students for success.

---

**870-551-3522**

**PremierHighSchools.com**

**Opening 2022**  
*Gran apertura 2022*

**Tuition-Free**  
*Educación Gratuita*



# WHY CHOOSE PREMIER HIGH SCHOOL?

**Graduate early**

*Graduarse temprano*



**Recover credits**

*Recuperar créditos perdidos*

**Attend school around  
your work schedule**

*Asistir a la escuela sin  
afectar el horario de trabajo*



**Balance family  
and your education**

*Balance de la familia y la educación*

**Prepare for  
higher education**

*Prepararse para la educación superior*



**Learn in a small  
campus environment**

*Aprender en un entorno más pequeño*

**WE OFFER A 4-HOUR SCHEDULE.**

**WHAT ARE YOU WAITING FOR?  
APPLY NOW!**

---

**870-551-3522**

**PremierHighSchools.com**



# PREMIER HIGH SCHOOL® TEXARKANA (ARKANSAS)



WE PROVIDE INDIVIDUAL ATTENTION THAT HELPS STUDENTS EARN THEIR HIGH SCHOOL DIPLOMA.

## CALL FOR MORE INFORMATION

on how Premier High School prepares students for success.

---

**903-251-3901**

**PremierHighSchools.com**

**Opening 2022**  
*Gran apertura 2022*

**Tuition-Free**  
*Educación Gratuita*

# WHY CHOOSE PREMIER HIGH SCHOOL?

**Graduate early**

*Graduarse temprano*



**Recover credits**

*Recuperar créditos perdidos*

**Attend school around  
your work schedule**

*Asistir a la escuela sin  
afectar el horario de trabajo*



**Balance family  
and your education**

*Balance de la familia y la educación*

**Prepare for  
higher education**

*Prepararse para la educación superior*



**Learn in a small  
campus environment**

*Aprender en un entorno más pequeño*

**WE OFFER A 4-HOUR SCHEDULE.**

**WHAT ARE YOU WAITING FOR?  
APPLY NOW!**

---

**870-551-3522**

**PremierHighSchools.com**