

1100 WARRENVILLE RD PH: 630.527.2320  
 SUITE 400W FAX: 630.527.2321  
 NAPERVILLE, IL www.imegcorp.com  
 60563

PROFESSIONAL SEAL

CONSULTANT

KEY PLAN

AGENCY APPROVAL

**PRELIMINARY  
NOT FOR  
CONSTRUCTION**

DISCLAIMER

IMEG CORP. RESERVES PROPRIETARY RIGHTS, INCLUDING COPYRIGHTS, TO THE DRAWING AND THE DATA SHOWN THEREON. ANY CHANGES AND/OR DATA ARE THE EXCLUSIVE PROPERTY OF IMEG CORP. AND SHALL NOT BE USED OR REPRODUCED FOR ANY OTHER PROJECT WITHOUT THE EXPRESS WRITTEN APPROVAL AND PARTICIPATION OF IMEG CORP. © 2011 IMEG CORP.

REFERENCE SCALE IN INCHES



REVISIONS

No.	Date	Revision/Issue

SHEET INFORMATION

Issue	CONCEPT STUDY
Date	6/21/2021
Job Number	21002994.00
Drawn	CJO
Checked	JMO
Approved	JMO

SHEET TITLE

**HOT AND CHILLED WATER SYSTEM  
SCHEMATIC DIAGRAM - DEMOLITION**

SCALE

Scale: 1/2" = 1'-0"

SHEET NUMBER

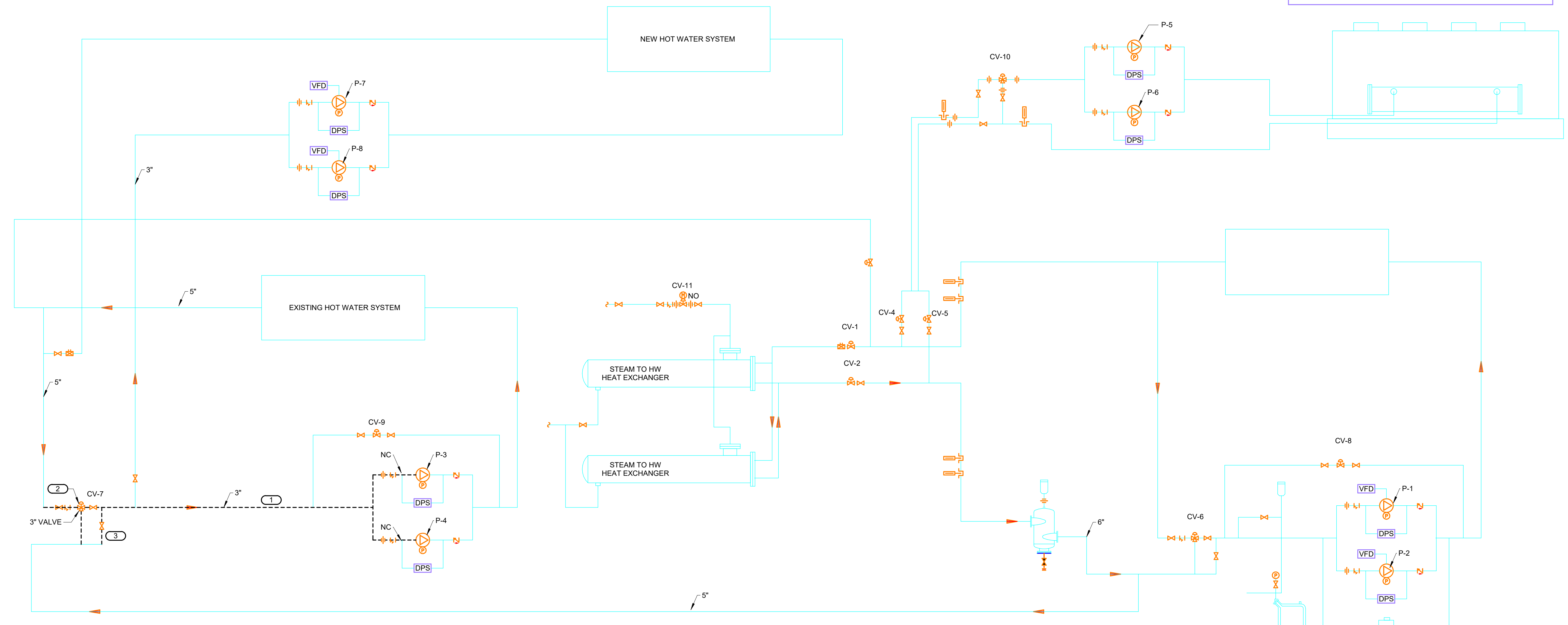
**MD100**

**HEATING WATER FLOW  
DIAGRAM SYMBOL LIST**

SYMBOL	DESCRIPTION
---	DEMO PIPING
→	DIRECTION OF FLOW IN PIPE
—	EXISTING PIPE
⊗	METER
NC	NEW CONNECTION
—	NEW PIPING
⊕	PRESSURE GAUGE (FURNISHED WITH BALL VALVE)
⊕	TEMPERATURE SENSOR WITH WELL
⊕	THERMOMETER WITH WELL (FILLED TYPE)
⊕	UNION/LANGE
⊕	SHUTOFF VALVE NORMALLY OPEN
⊕	SHUTOFF VALVE NORMALLY CLOSED
⊕	BALANCING VALVE
⊕	CONTROL VALVE (TWO-WAY)
⊕	CONTROL VALVE (THREE-WAY)
⊕	CHECK VALVE
⊕	"WYE" - STRAINER

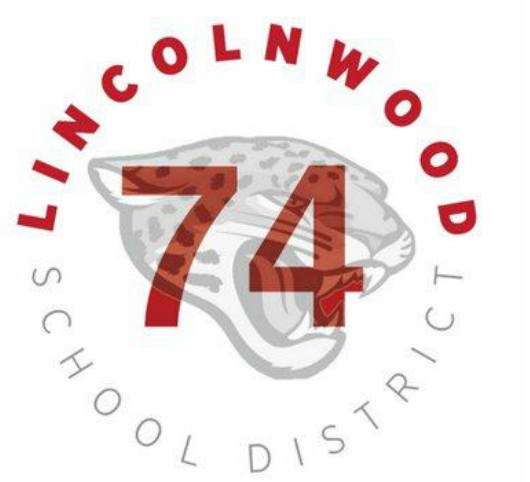
**KEYNOTES:**

1. DISCONNECT AND REMOVE EXISTING PIPING DOWNSTREAM OF CV 7 AND ALL ASSOCIATED VALVES.
2. DISCONNECT AND REMOVE CV 7, CUT BACK INLET, OUTLET AND DISCHARGE PIPING AS REQUIRED. DISCONNECT AND REMOVE EXISTING SHUTOFF VALVES AND STRAINER AS REQUIRED.
3. DISCONNECT AND REMOVE EXISTING 3" BYPASS VALVE. CUT BACK PIPING AS REQUIRED AND PREPARE FOR NEW CONNECTION.



**1 HOT AND CHILLED WATER SYSTEM SCHEMATIC DIAGRAM - DEMOLITION**  
NO SCALE

21002994.00 6/21/2021 11:49:36 AM Project Name



**IMEG**  
 1100 WARRENVILLE RD PH: 630.527.2320  
 SUITE 400W FAX: 630.527.2321  
 NAPERVILLE, IL www.imegcorp.com  
 60563

PROFESSIONAL SEAL

CONSULTANT

KEY PLAN

AGENCY APPROVAL

**PRELIMINARY  
 NOT FOR  
 CONSTRUCTION**

DISCLAIMER  
 IMEG CORP. RESERVES PROPRIETARY RIGHTS, INCLUDING COPYRIGHTS, TO THE DRAWING AND THE DATA SHOWN THEREON. THE DRAWING AND DATA ARE THE EXCLUSIVE PROPERTY OF IMEG CORP. AND SHALL NOT BE USED OR REPRODUCED FOR ANY OTHER PROJECT WITHOUT THE EXPRESS WRITTEN APPROVAL AND PARTICIPATION OF IMEG CORP.  
 © 2011 IMEG CORP.

REFERENCE SCALE IN INCHES  
 0 1 2

REVISIONS  
 No. Date Revision/Issue

SHEET INFORMATION  
 Issue **CONCEPT STUDY**  
 Date **6/21/2021**  
 Job Number **21002994.00**  
 Drawn **CJO**  
 Checked **JMO**  
 Approved **JMO**

SHEET TITLE  
**HOT AND CHILLED WATER SYSTEM  
 SCHEMATIC DIAGRAM - NEW**

SCALE  
 Scale **1/2" = 1'-0"**

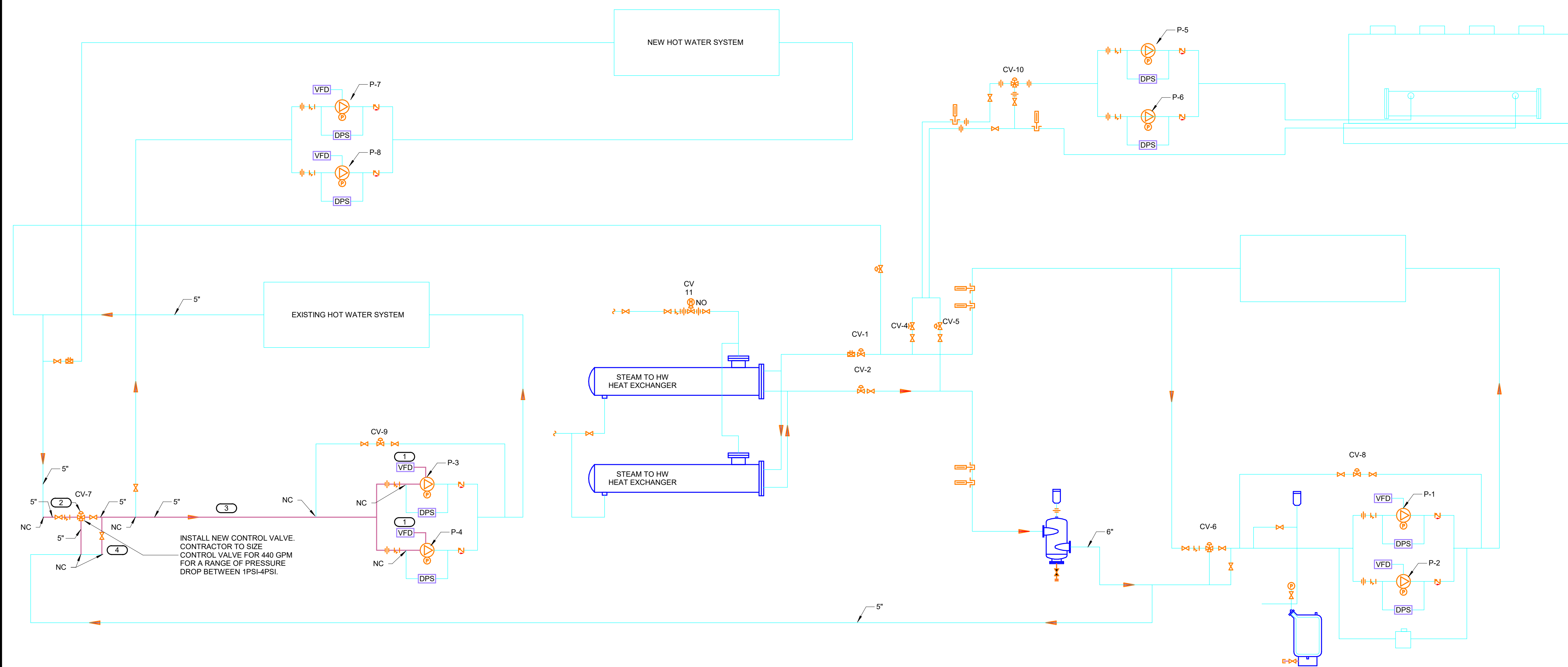
SHEET NUMBER

**M100**

**HEATING WATER FLOW  
 DIAGRAM SYMBOL LIST**

SYMBOL	DESCRIPTION
---	DEMO PIPING
→	DIRECTION OF FLOW IN PIPE
—	EXISTING PIPE
—	METER
NC	NEW CONNECTION
—	NEW PIPING
⊕	PRESSURE GAUGE (FURNISHED WITH BALL VALVE)
⊕	TEMPERATURE SENSOR WITH WELL
⊕	THERMOMETER WITH WELL (FILLED TYPE)
—	UNION/FLANGE
⊕	SHUTOFF VALVE NORMALLY OPEN
⊕	SHUTOFF VALVE NORMALLY CLOSED
⊕	BALANCING VALVE
⊕	CONTROL VALVE (TWO-WAY)
⊕	CONTROL VALVE (THREE-WAY)
⊕	CHECK VALVE
⊕	"WYE" - STRAINER

- KEYNOTES: ( # )**
1. INSTALL VFDs FOR PUMPS 3 & 4. REPLACE PUMP MOTOR WITH MOTOR RATED FOR USE WITH A VFD.
  2. INSTALL NEW CONTROL VALVE SIZED BY CONTRACTOR.
  3. INSTALL NEW 5" HEATING WATER LINE DOWNSTREAM OF CV 7 AS REQUIRED TO SERVE PUMPS 3 & 4. REPLACE EXISTING SHUTOFF VALVES AND STRAINERS AS REQUIRED.
  4. CHANGE BYPASS FROM 3" TO 5" PIPING AND INSTALL NEW BYPASS VALVE.



**1 HOT AND CHILLED WATER SYSTEM SCHEMATIC DIAGRAM - NEW**  
 NO SCALE

21002994.00 6/21/2021 11:49:36 AM Project Name