

## SAP GOAL AND MEASURES

### ACADEMICS

#### *District Growth Areas:*

- Ensuring the continued development of curriculum across all content areas fidelity and uniformity across the district
- Support a common assessment system to measure student learning
  
- Supporting staff to better use assessment data to make instructional decisions and determine the effectiveness of strategies being implemented
- Support universal preschool program

#### *School Growth Areas:*

- Testing new report
- 0
  
- 0
- 0

### HUMAN CAPITAL

#### *District Growth Areas:*

- Recruit highly qualified staff
  
- Professional Development will be imbedded and driven by staff or demonstrated student need

#### *School Growth Areas:*

- 0
  
- 0
  
- 0

**OPERATIONS**

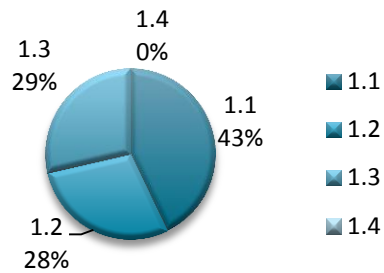
<i>District Growth Areas:</i>	<i>School Growth Areas:</i>
• Supporting technology with the available funding	• 0
• Support the integrated use of technology in all schools	• 0
• Support Business Management Services	• 0 • 0

**CULTURE AND CLIMATE**

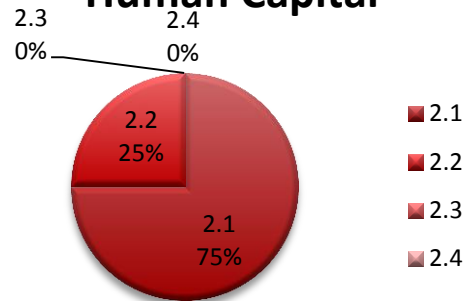
<i>District Growth Areas:</i>	<i>School Growth Areas:</i>
• Support continued integration of PBIS in all schools	• 0
• Increase parent involvement and feedback residency issues	• 0
• Addressing student/family transiency and illegal residency issues	• 0
	• 0

# Monthly Statistics Report

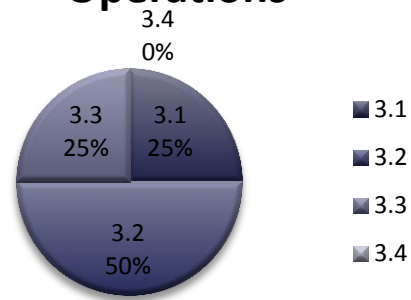
## Academics



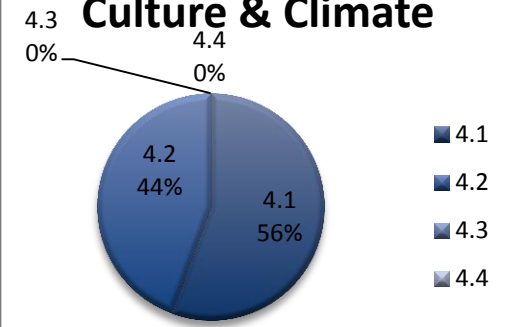
## Human Capital



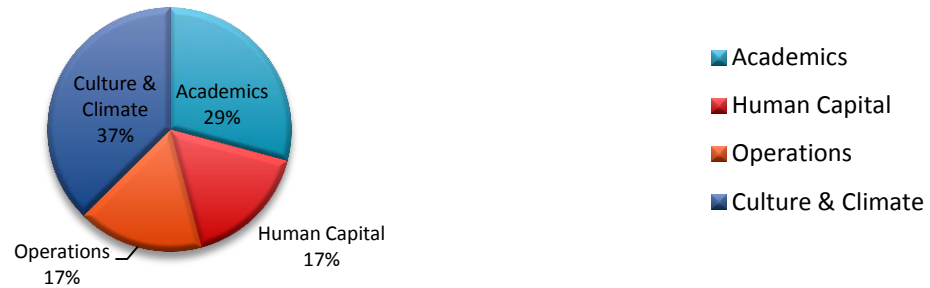
## Operations



## Culture & Climate



## Strategic Plan



Indicator	1.1	1.2	1.3	1.4	Date Completed	Academics
Academics	✓					Analyzing and implementing schedule changes
	✓	✓	✓			Participated in Administrative Walk-through/Instructional Rounds
		✓	✓			Reading teachers and support staff participated in applying for grant through Mini Grants Workshop
	✓					SPDG Strategic Decision Making PD (Literacy) scheduled

Indicator	2.1	2.2	2.3	2.4	Date Completed	Human Capital
Human Capital	✓					Library Media Specialist interview process
		✓				FIMA Staff Safety PD
	✓					Hiring of additional Alternative Education Teacher
	✓					Hired a Spanish teacher

Indicator	3.1	3.2	3.3	3.4	Date Completed	Operations
Operations	✓	✓				Ongoing one-to-one laptop implementation and distribution of laptops
			✓			Transfer of funds to order supplies
		✓				Staff Edgenuity PD

Indicator	4.1	4.2	4.3	4.4	Date Completed	Culture and Climate
Culture and Climate	✓					Vertical District Alignment of PBIS Structure Practices
		✓				Special Veteran's Day Assembly/Celebration
		✓				Parent/Guardian Teacher Conferences
		✓				Principals Chat Sessions
	✓	✓				Report Cards, Grade Level Newsletters distributed
	✓					PBIS reward recognition utilizing PBIS School Store
	✓					Grade level PBIS student recognition activities
	✓					Applied for BEST community grant