



SOUTH SAN ANTONIO INDEPENDENT SCHOOL DISTRICT

Agenda Item Summary

Meeting Date: May 3, 2017

Purpose:  Report Only  Recognition  Discussion/ Possible Action

Presenter(s): Delinda Castro, Chief Academic Officer

Item Title:

Discussion and possible action to approve campus attendance zones for the 2017-2018 school year.

Description:

With the consolidation of Kazen MS and Athens ES, campus attendance zones across the district have been analyzed and realigned to best serve our South San community.

District Goal:

Goal 6 We will promote and ensure a safe and secure learning environment for all students.

Funding Budget Code and Amount:

CFO Approval

Table with 2 columns: Funding Budget Code and Amount, CFO Approval

APPROVAL ROUTE

SIGNATURE

DATE

Principal/Director:

Executive Director:

Chief Administrator:

Superintendent:

Handwritten signatures for Principal/Director, Executive Director, Chief Administrator, and Superintendent.

Handwritten dates: 4-21-17, 4-21-17, 4-27-17

**South San Antonio ISD District**  
**Proposed Boundaries Options (For Board Review May 3rd, 2017)**

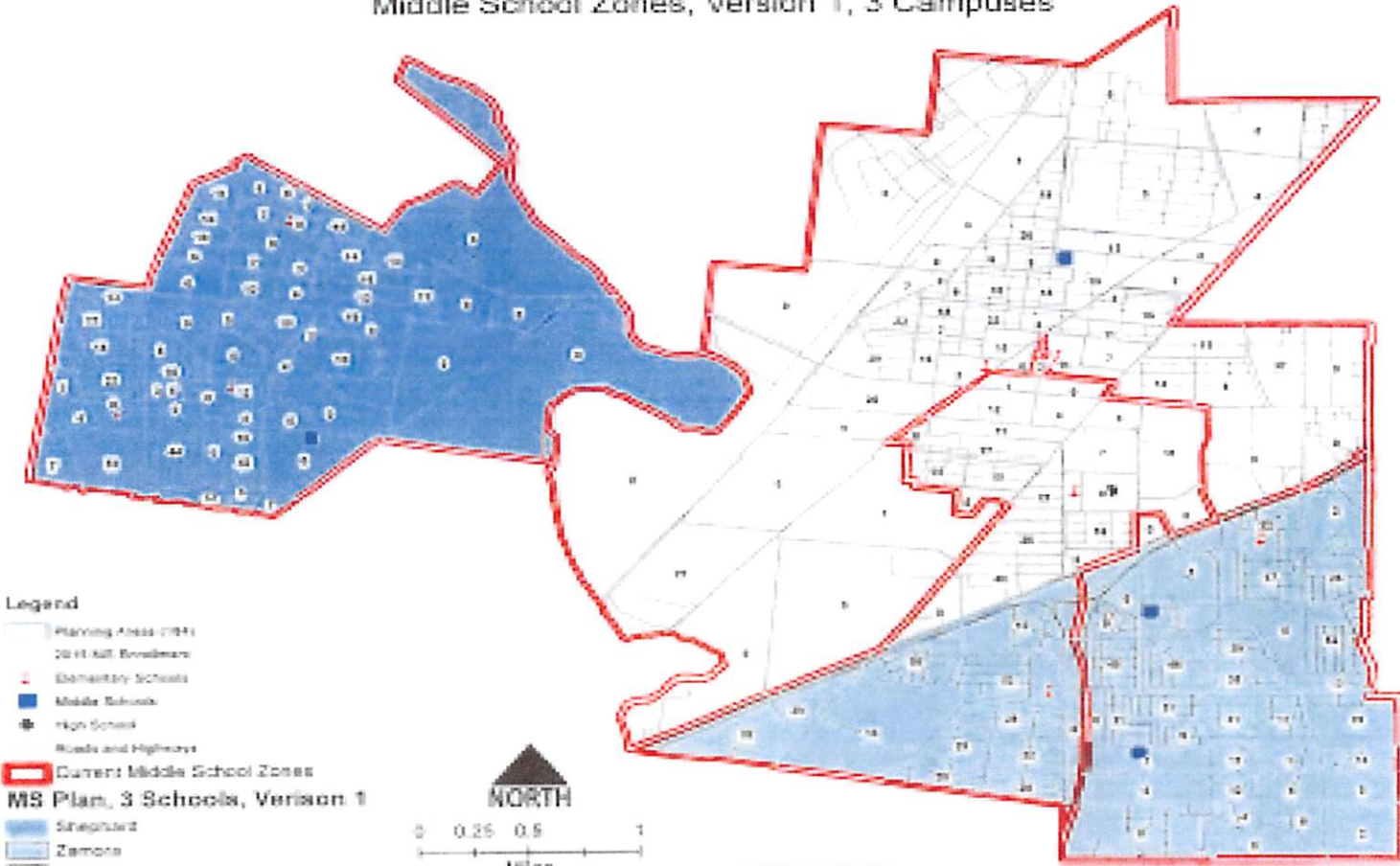
**1. Consolidation of Kazen Middle School, Athens Elementary and the Alternative School**

a. Results include

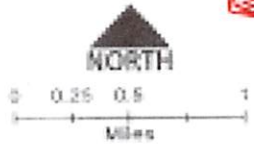
- i. All Middle School students south of IH-35 will attend Zamora Middle School
- ii. All Middle School student north of IH-35 and east of Leon Creek/Military Drive overpass will attend Dwight Middle School
- iii. All Kindred Elementary students going to 6th grade will attend Dwight Middle School
- iv. All students in the Hunter's Glen Apartment Complex will no longer attend Benavidez. They will now attend Palo Alto Elementary School.
- v. All students who attended Athens will now attend Carrillo Elementary
- vi. Alternative School Mandatory Placements will be sent to a neighboring school district
- vii. All students at the Yarrow Boulevard Apartment Complex will attend Kindred Elementary

**THIS IS A PROPOSED DRAFT**

# Middle School Zones, Version 1, 3 Campuses

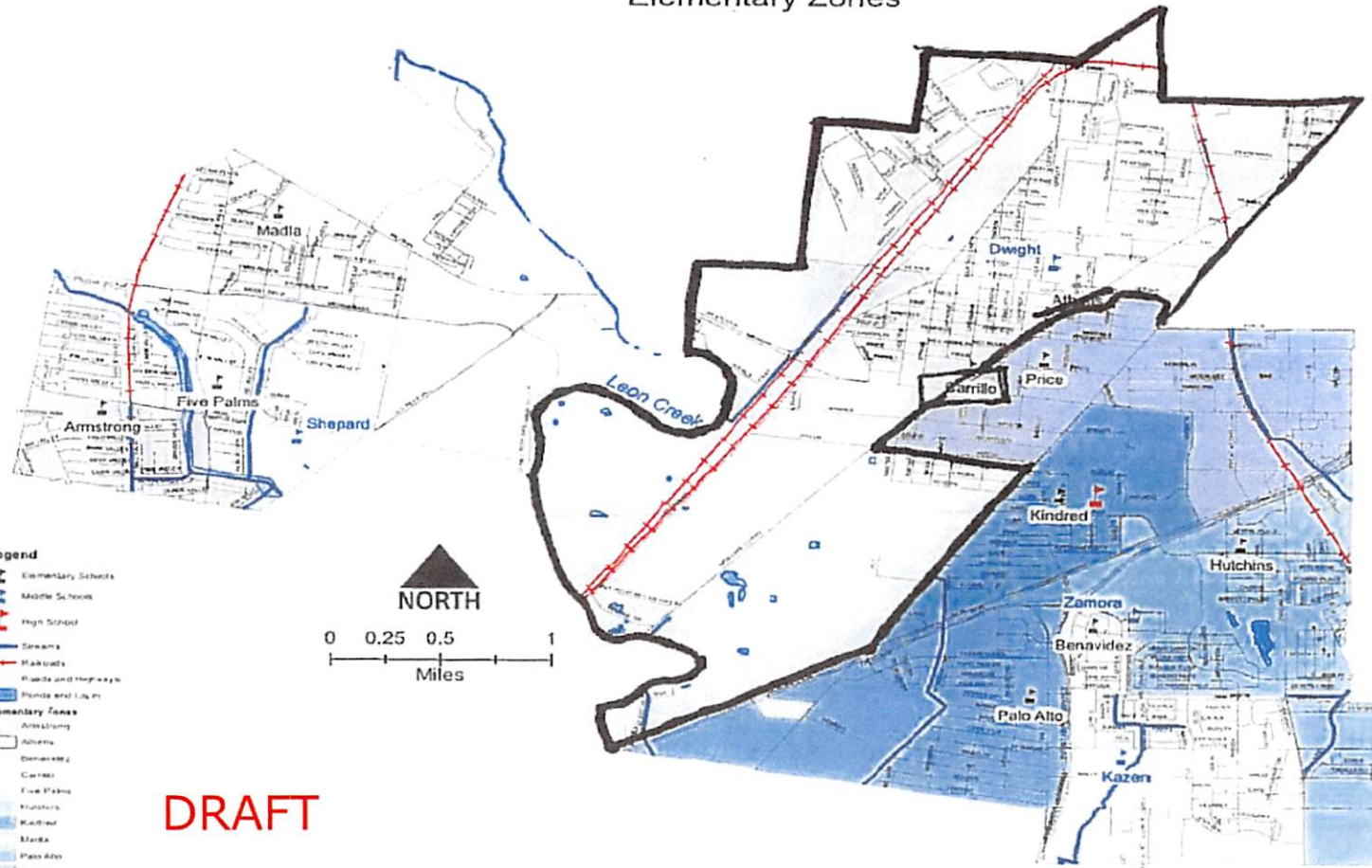


- Legend**
- Planning Area (1991)
  - 2011 Mill Boundaries
  - Elementary Schools
  - Middle Schools
  - High Schools
  - Roads and Highways
  - Current Middle School Zones
  - MS Plan, 3 Schools, Version 1**
  - Shepherd
  - Zamora
  - Dwight

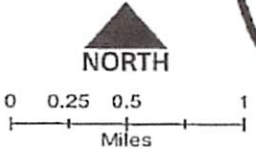


DRAFT

# Elementary Zones



- Legend**
- Elementary Schools
  - Middle Schools
  - High School
  - Streams
  - Roads
  - Roads and Highways
  - Parks and Lakes
  - Elementary Zones**
  - Armstrong
  - Five Palms
  - Madia
  - Shepard
  - Leon Creek
  - Barrillo
  - Dwight
  - Price
  - Kindred
  - Zamora
  - Benavidez
  - Palo Alto
  - Kazen
  - Hutchins
  - Price



**DRAFT**