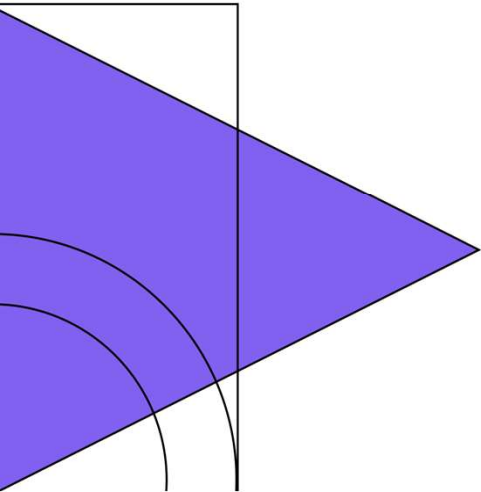
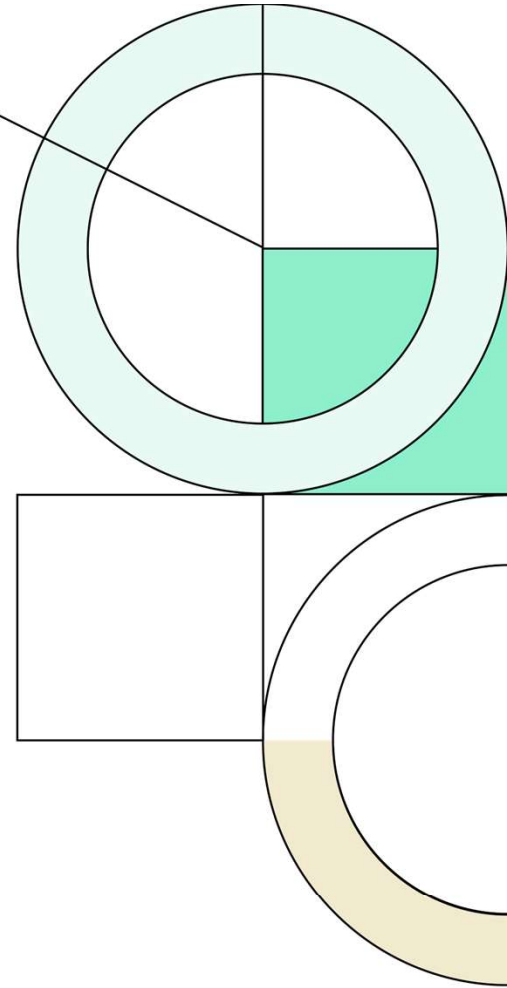




# United Independent School District

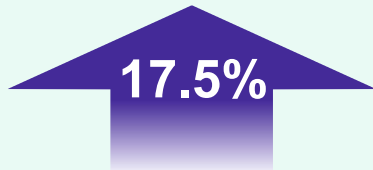
Demographic Study  
Spring 2024





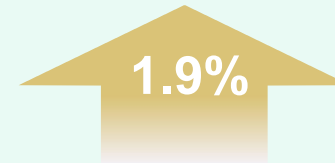
## Census Population Changes

2020 District  
Population Estimate  
**184,054**



**156,570**  
2010 Census  
District Population

2020 District Population  
Below Age 19 Estimate  
**63,579**



**62,421**  
2010 Census District  
Population Below Age 19

2020 District Households  
Estimate  
**52,389**



**40,914**  
2010 Census District Households

2020 District Household Size  
**3.51**



**3.76**  
2010 District Household Size



## Census Population Changes

2023 District  
Population Estimate  
**189,750**

**3.1%**

**184,054**  
2020 Census  
District Population

2023 District Population  
Below Age 19 Estimate  
**65,545**

**3.1%**

**63,579**  
2020 Census District  
Population Below Age 19

2023 District Households  
Estimate  
**54,705**

**4.4%**

**52,389**  
2020 Census District Households

2023 District Household Size  
**3.47**

**-0.04**

**3.51**  
2020 District Household Size



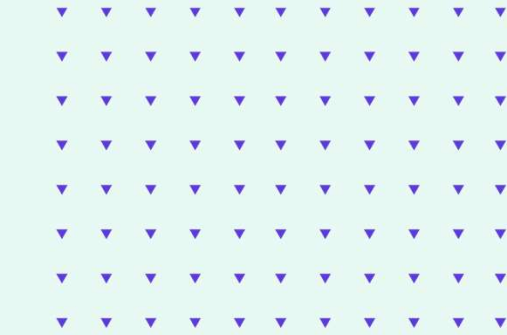
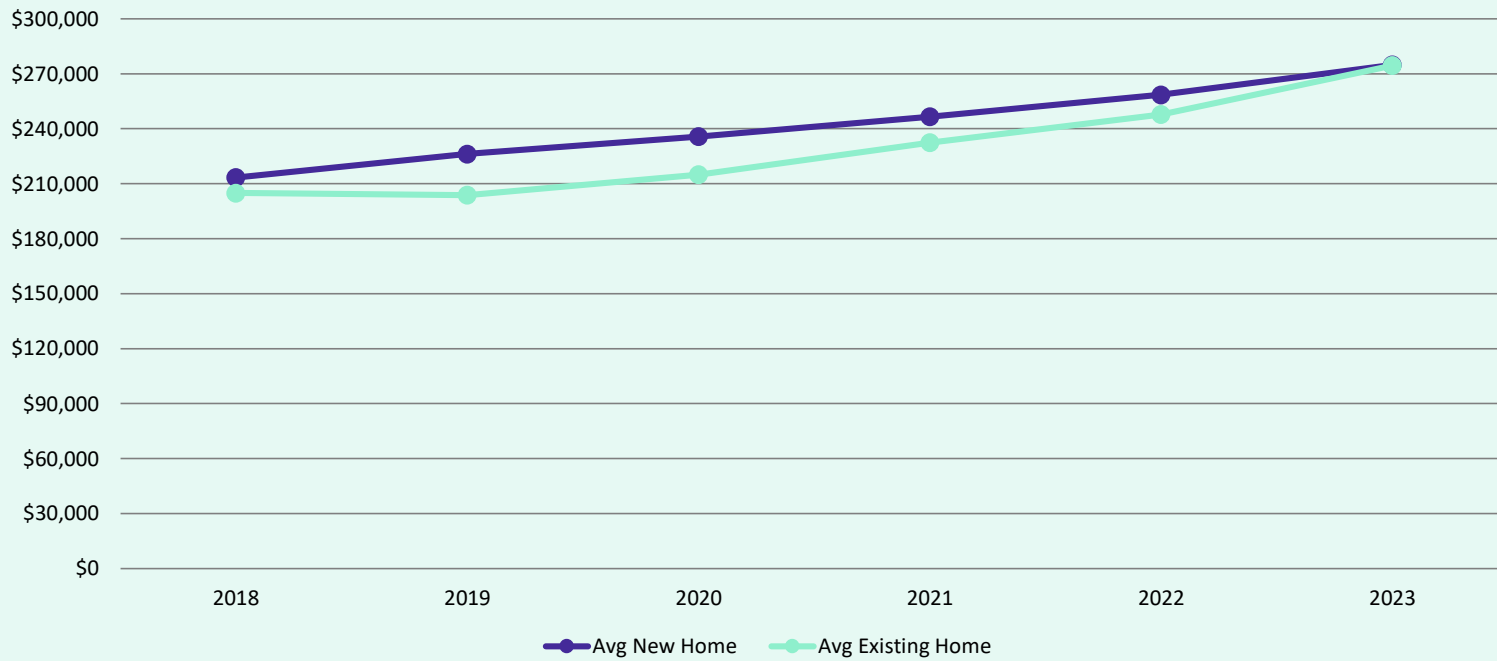
# United ISD Historical Home Sales





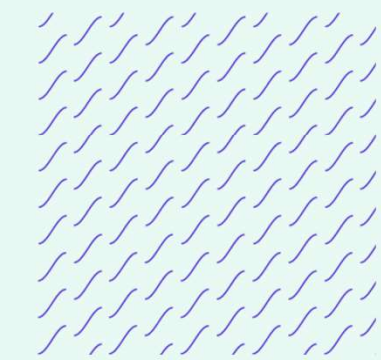
# United ISD Home Price Analysis

### Average New vs. Existing Sale Price, 2012-2023



	Avg New Home	Avg Existing Home
2018	\$213,428	\$204,913
2019	\$226,222	\$203,779
2020	\$235,755	\$214,976
2021	\$246,537	\$232,453
2022	\$258,531	\$247,815
2023	\$274,912	\$274,570

- The average new home sale price in United ISD has risen 29% between 2016 and 2023, an increase of almost \$61,500
- The average existing home sale price in UISD has risen 25% in the last 5 years, an increase of over \$69,600
- 2023 home sales to date indicate a slowing of new home price increases in response to increased interest rates





# POPULATION TRENDS AND KEY INDICATORS

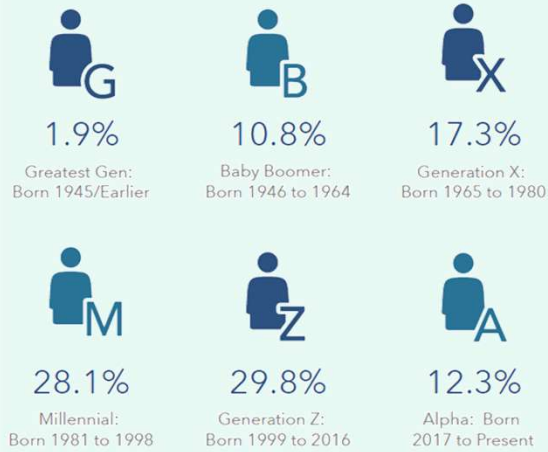
**UNITED ISD**  
Area: 2,488.76 square miles

<b>189,750</b>	<b>54,705</b>	<b>3.41</b>	<b>29.7</b>	<b>\$63,938</b>	<b>\$182,393</b>	<b>66</b>	<b>122</b>	<b>69</b>
Population	Households	Avg Size Household	Median Age	Median Household Income	Median Home Value	Wealth Index	Housing Affordability	Diversity Index

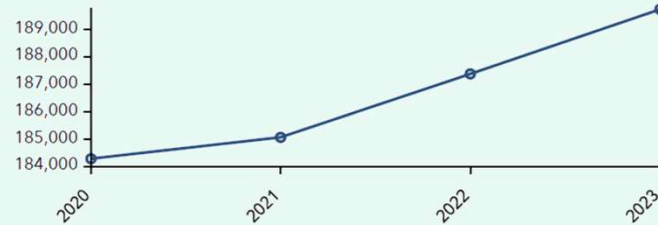
## MORTGAGE INDICATORS



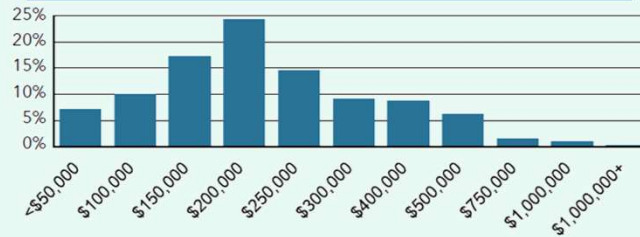
## POPULATION BY GENERATION



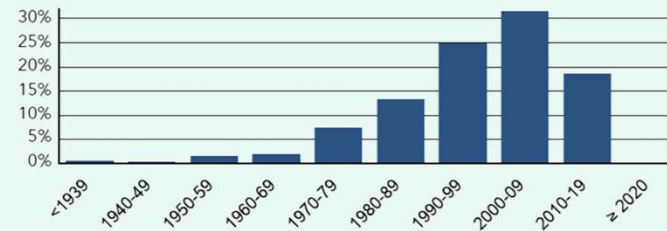
## Historical Trends: Population



## Home Value



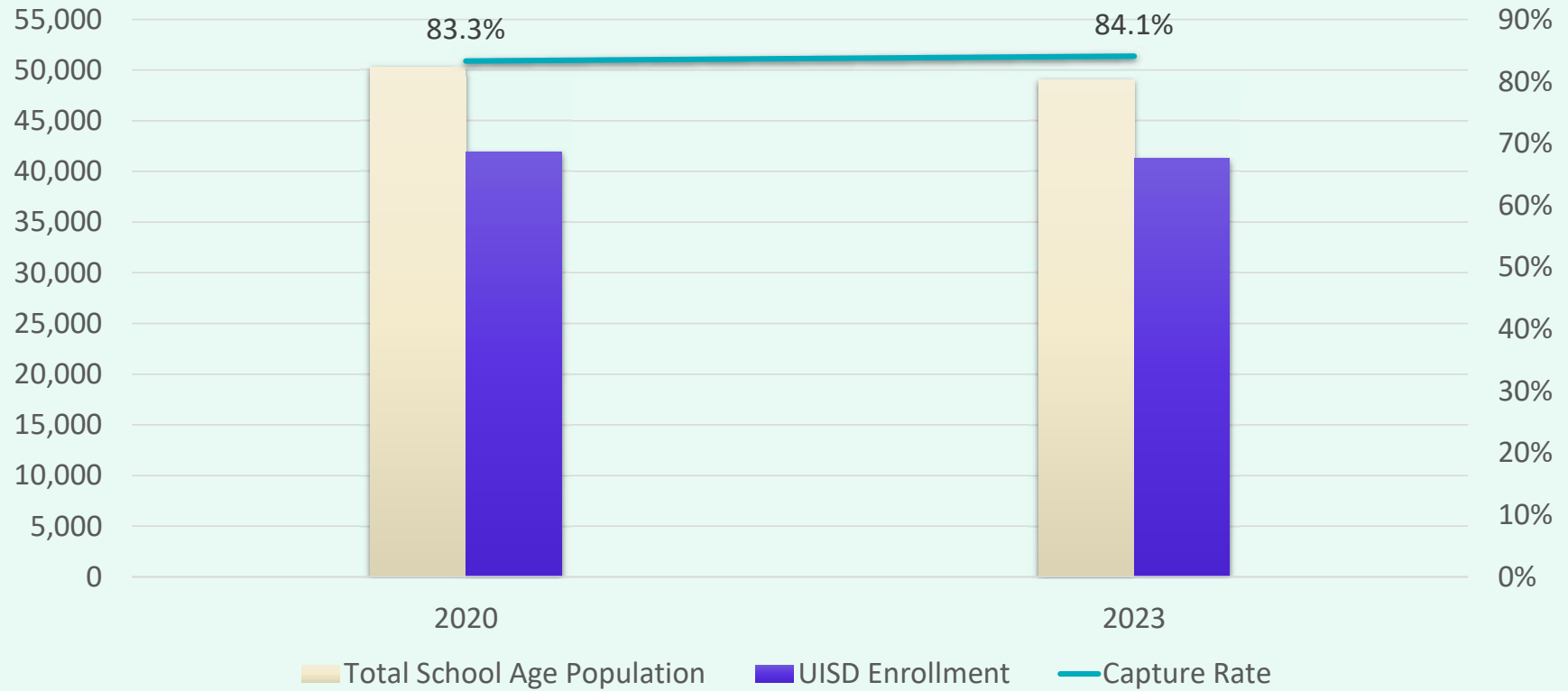
## Housing: Year Built





# United ISD Capture Rate

### UISD Student Capture Rate

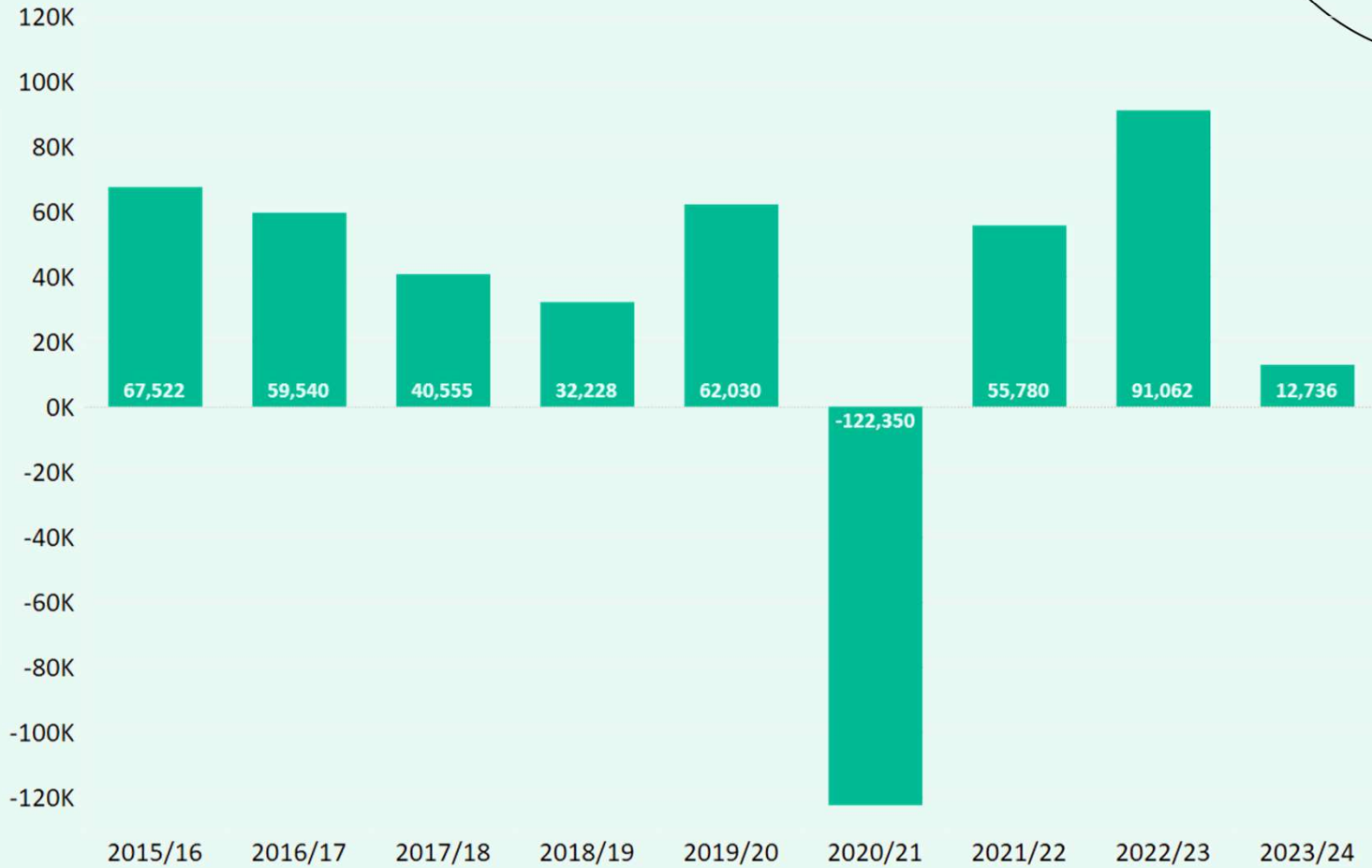


	Ages 5-9	Ages 10-14	Ages 15-19	Total School Age Population	UISD Enrollment	Capture Rate
2020	15,275	16,981	18,078	50,334	41,921	83.3%
2023	17,118	16,137	15,803	49,058	41,256	84.1%



# State Enrollment Trends

## Texas ISD Enrollment Change







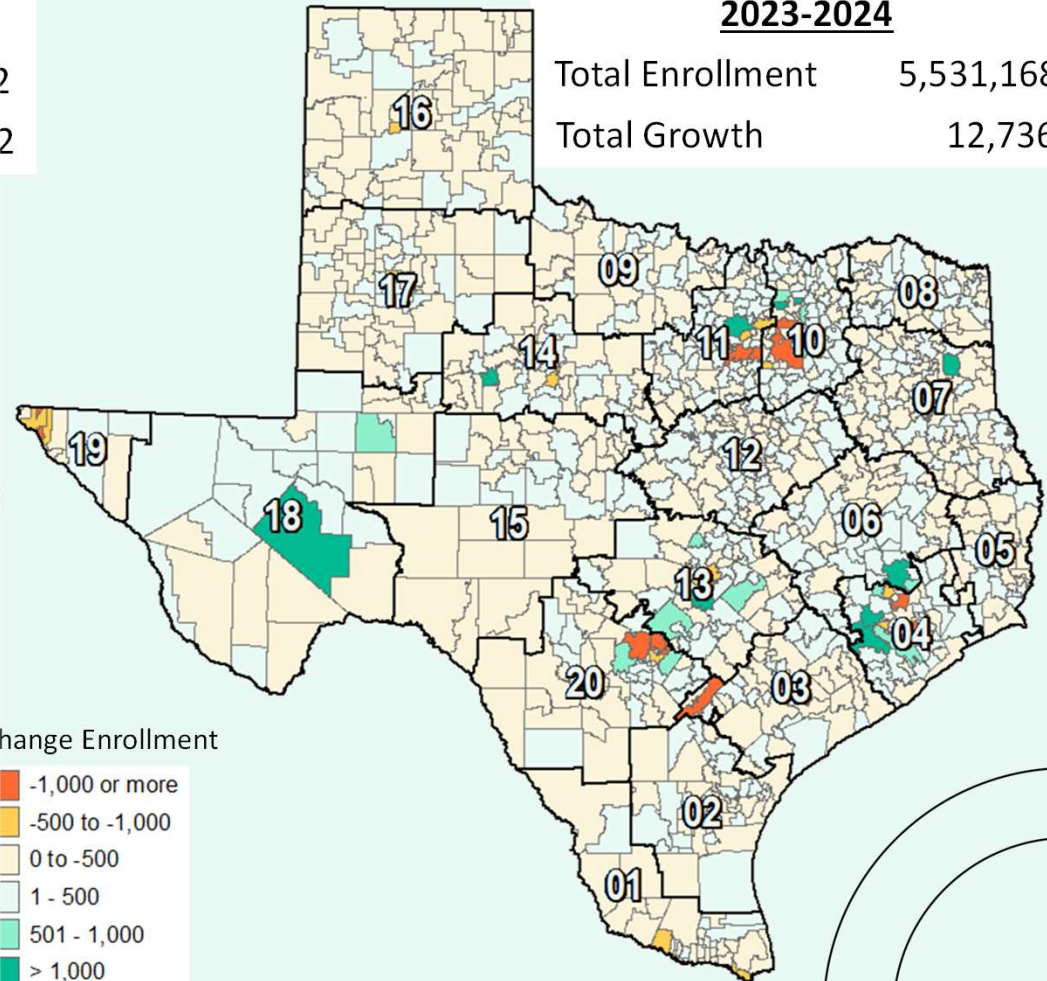
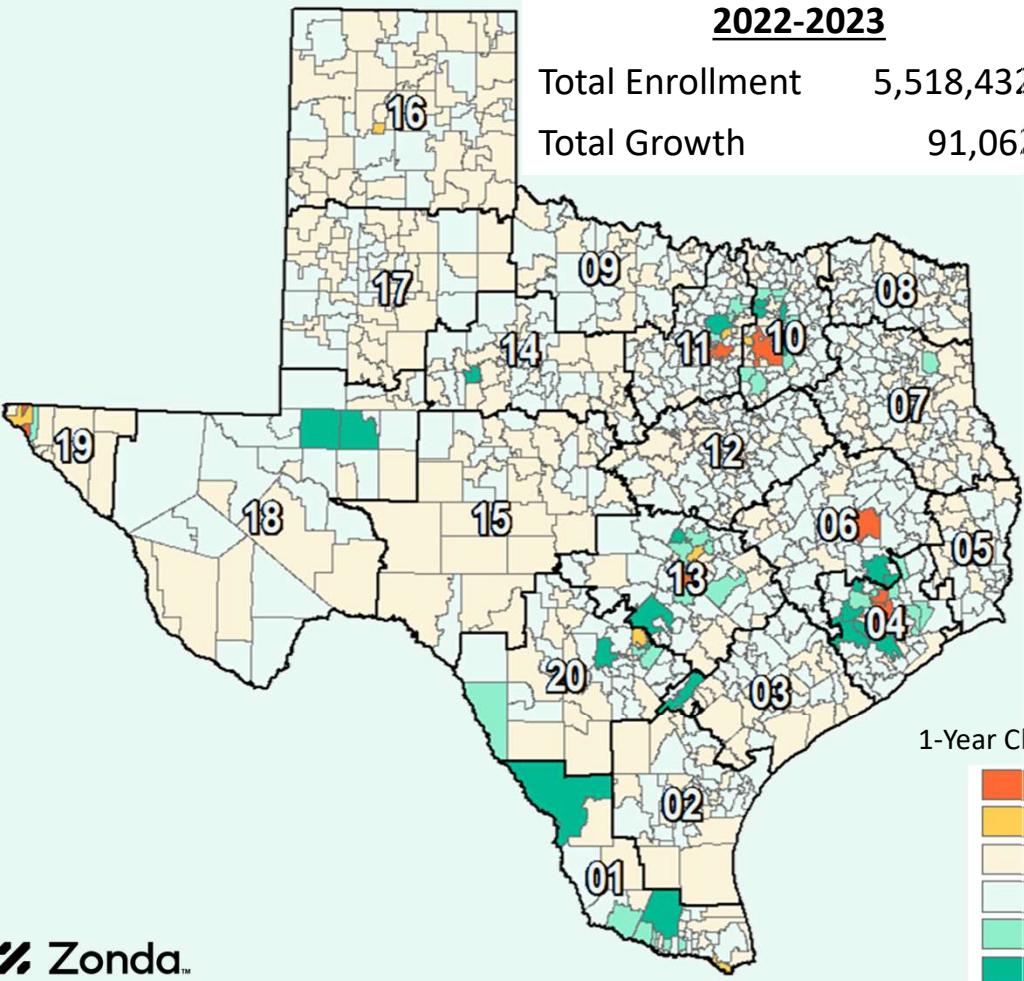
# State Enrollment Trends

## 2022-2023

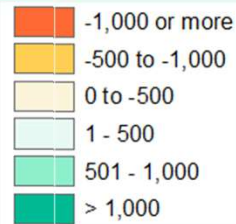
Total Enrollment 5,518,432  
Total Growth 91,062

## 2023-2024

Total Enrollment 5,531,168  
Total Growth 12,736



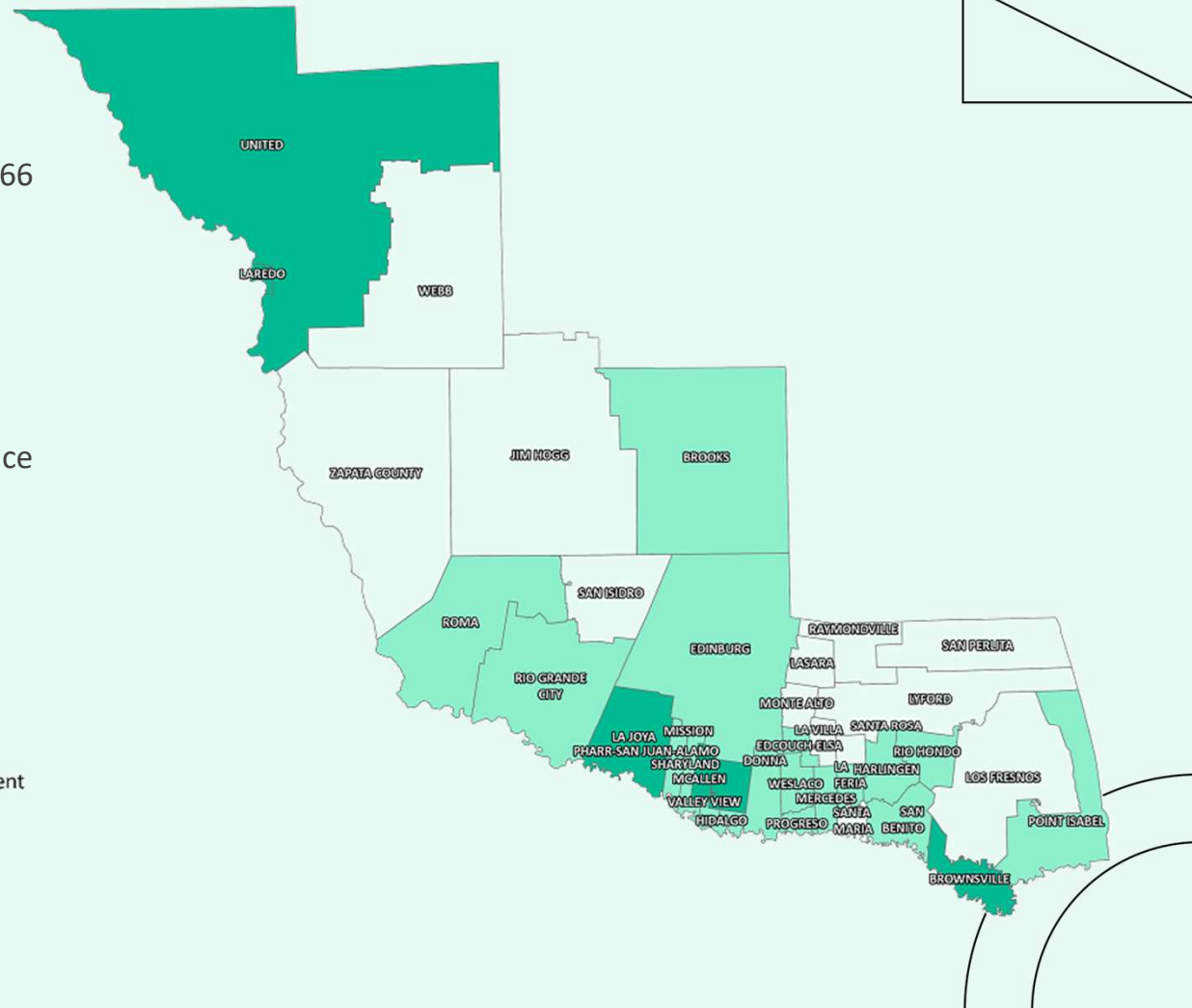
1-Year Change Enrollment





# Region 1 Enrollment Trends

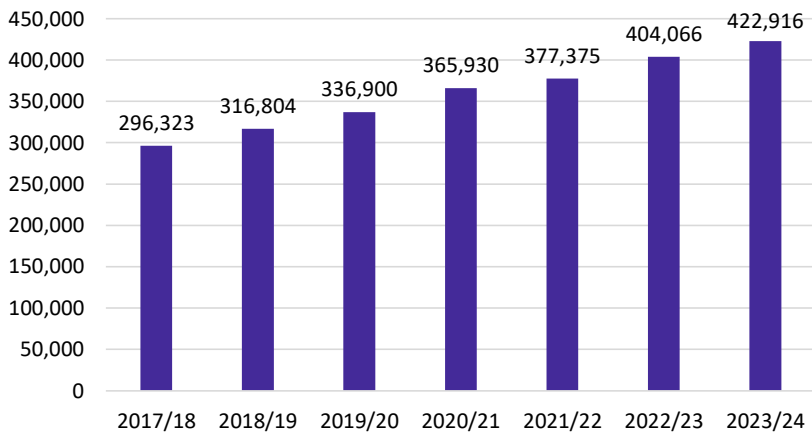
- Region 1 has seen a 5-year enrollment decrease of 36,166 students (-9.3% growth).
- Student enrollment declined by 4,380 students from 2022/23, in Region 1 (-1.2% growth).
- United ISD enrollment declined by 2,161 students between 2018/19 and 2023/24 (-5%).
- UISD enrollment declined by 178 students, or -0.4%, since 2022/23



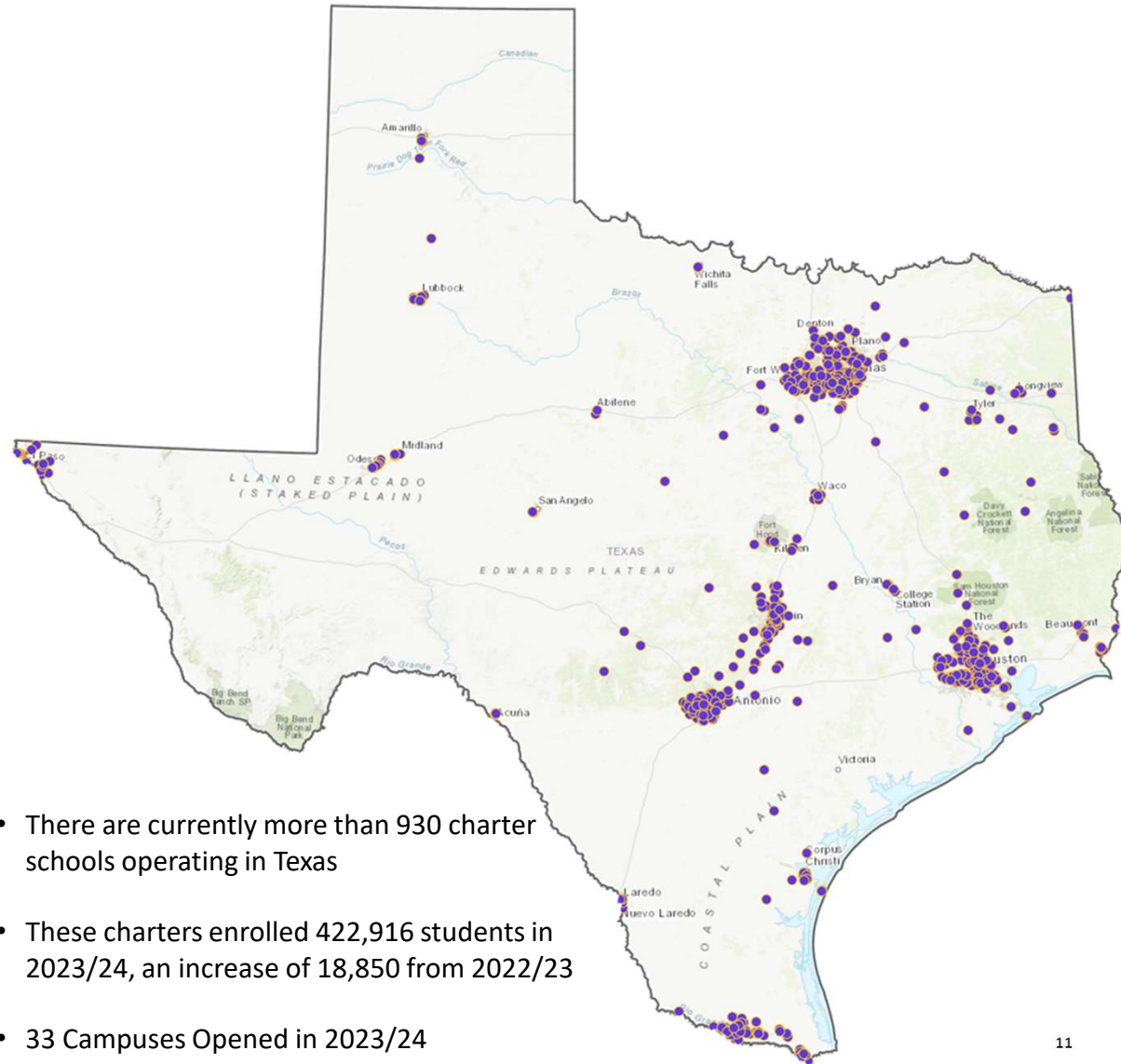
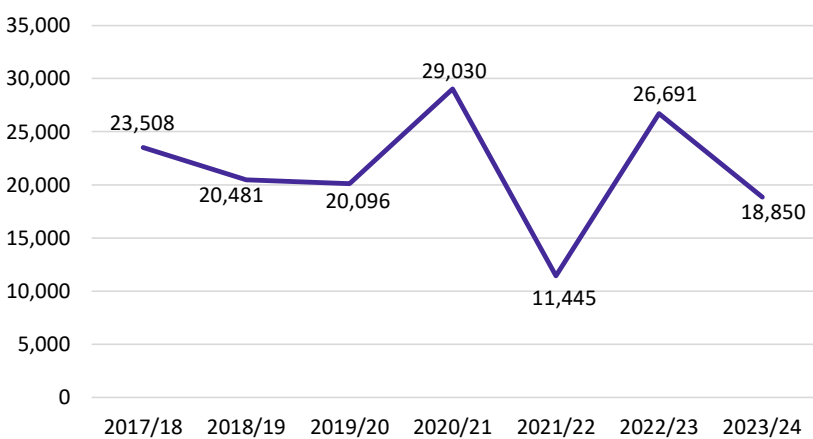


# Charter Schools

### Total Charter Enrollment



### Charter Enrollment Change



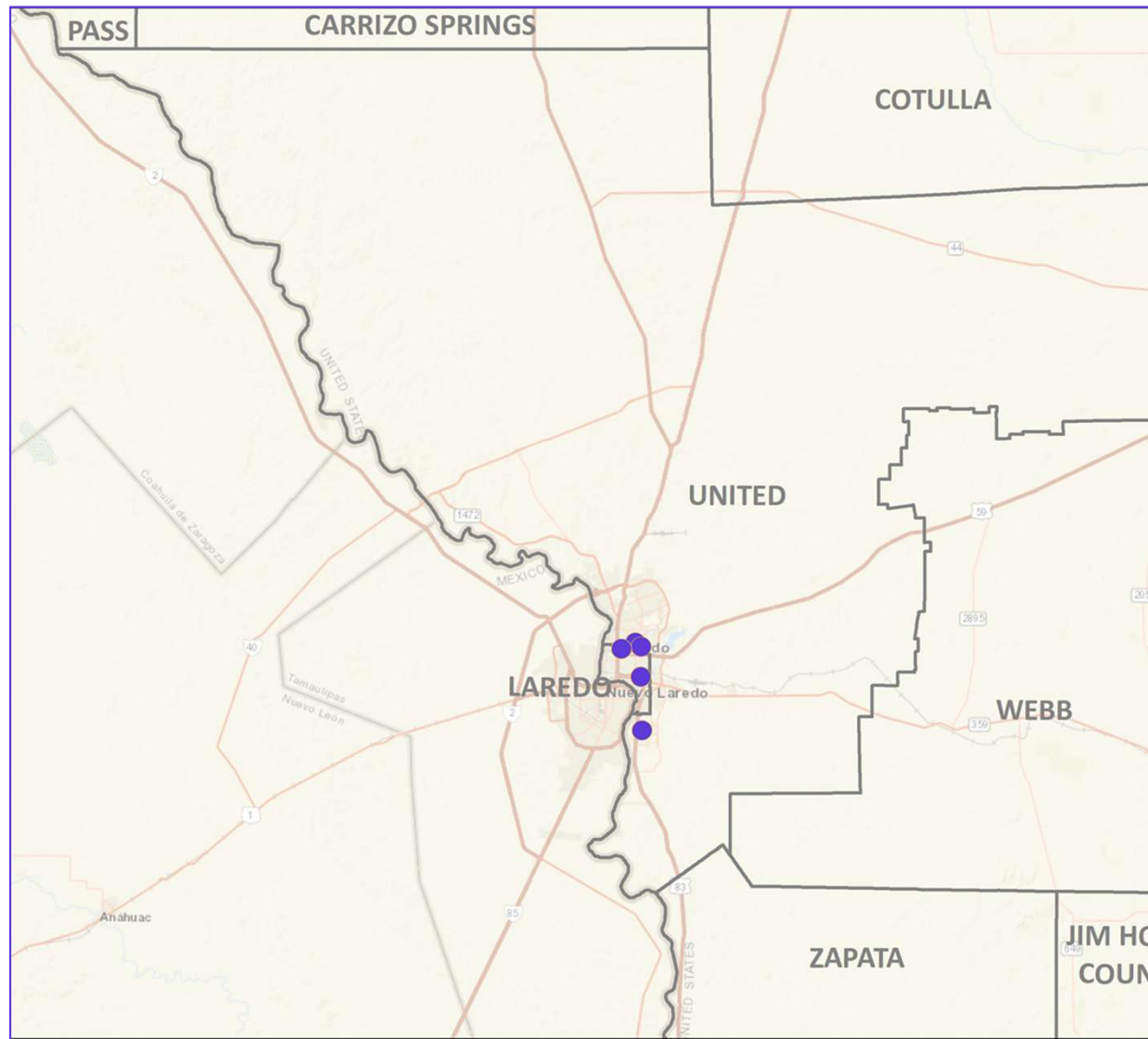
- There are currently more than 930 charter schools operating in Texas
- These charters enrolled 422,916 students in 2023/24, an increase of 18,850 from 2022/23
- 33 Campuses Opened in 2023/24



## Charter Schools: United ISD

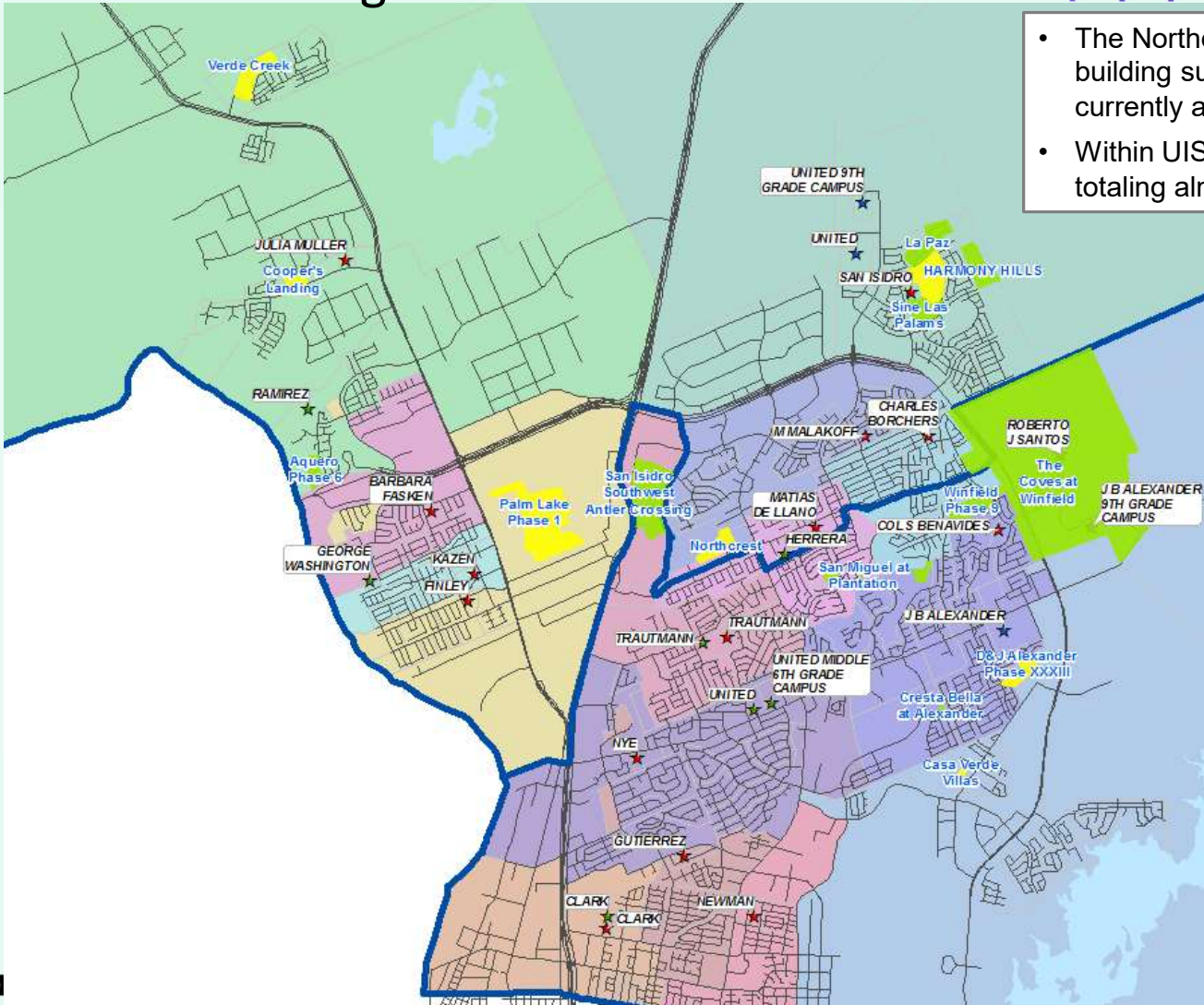
There are currently 6 charter school campuses open within United ISD

These campuses enrolled more than 2,410 students in 2023/24





# District Housing Overview - North



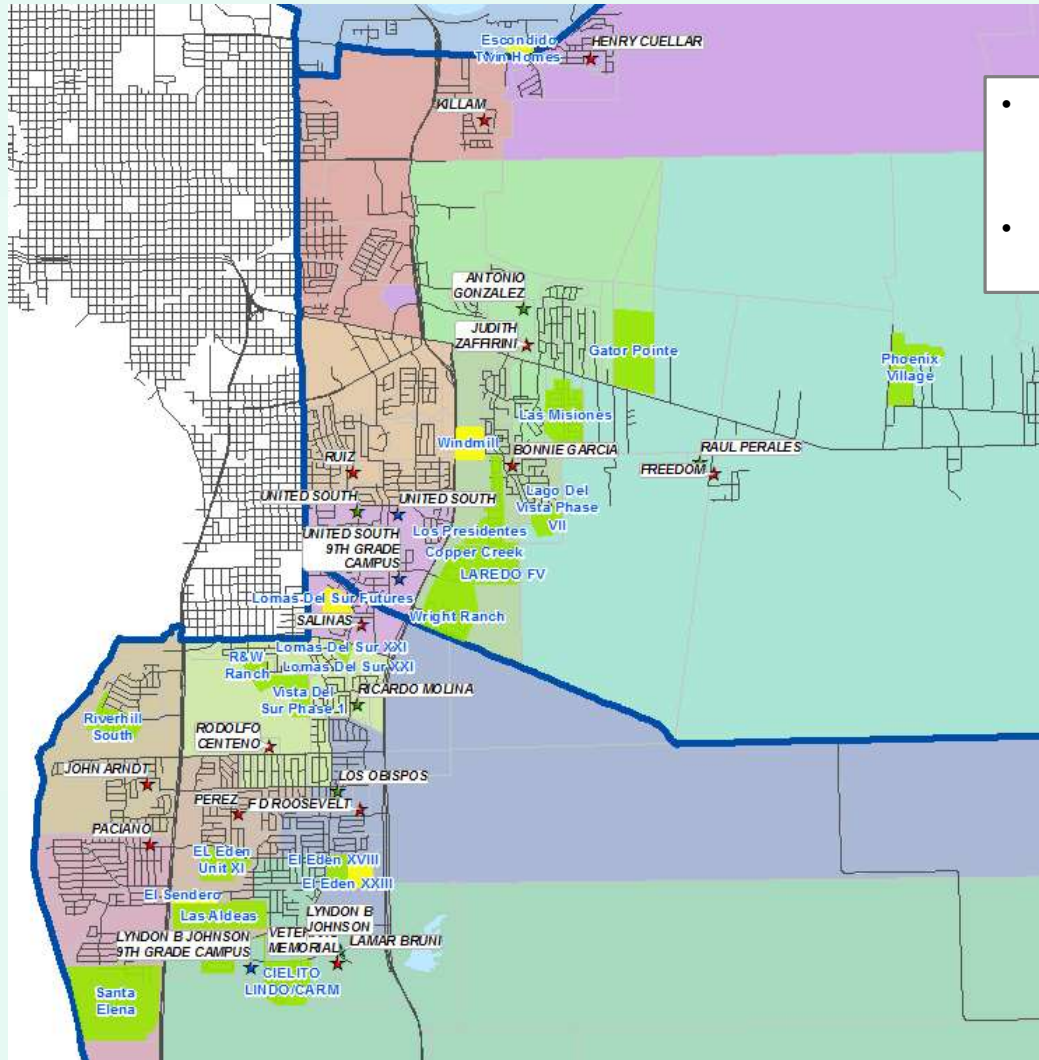
- The Northern Area of district has 11 actively building subdivisions, with more almost 400 lots currently available to build on
- Within UISD there are 7 future subdivisions, totaling almost 2,000 future lots

**Subdivisions**

- ACTIVE
- FUTURE



# District Housing Overview - South



- The Southern Area of district has 17 actively building subdivisions, with more almost 1,000 lots currently available to build on
- Within UISD there are 5 future subdivisions, totaling almost 2,500 future lots

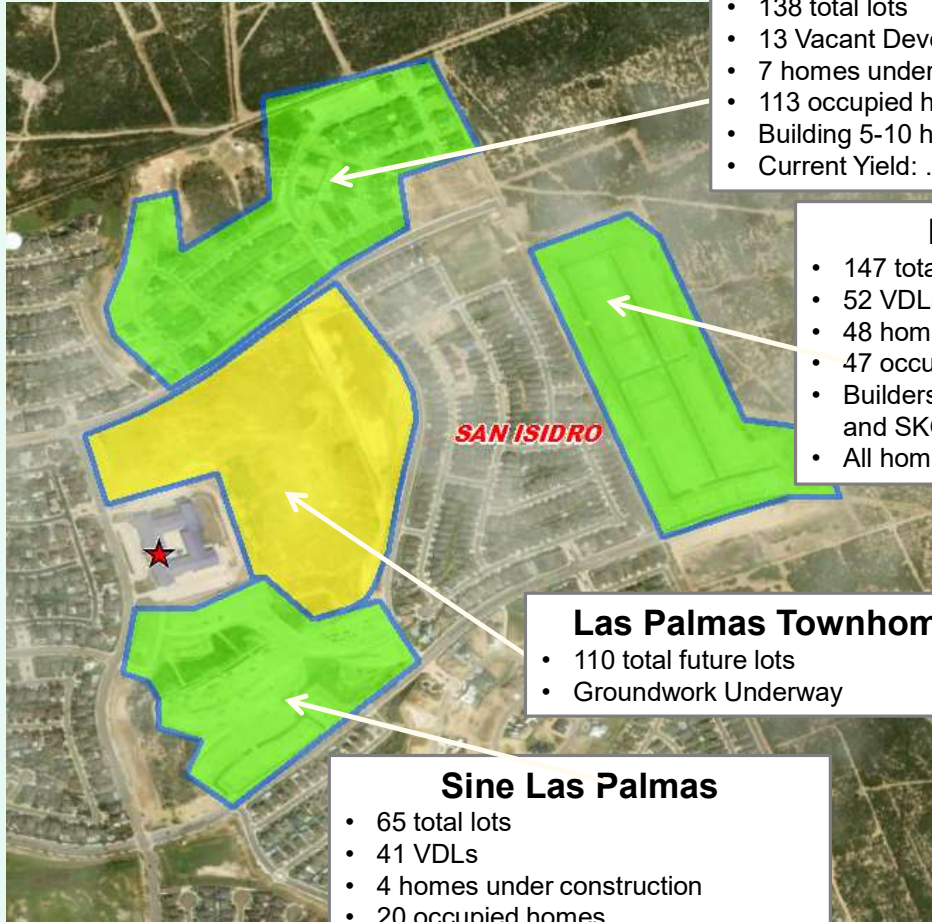
**Subdivisions**

- ACTIVE
- FUTURE



# Residential Activity

February  
2024



### La Paz Phase 2

- 138 total lots
- 13 Vacant Developed Lots (VDL)
- 7 homes under construction
- 113 occupied homes
- Building 5-10 homes a year
- Current Yield: .609

### Harmony Hills

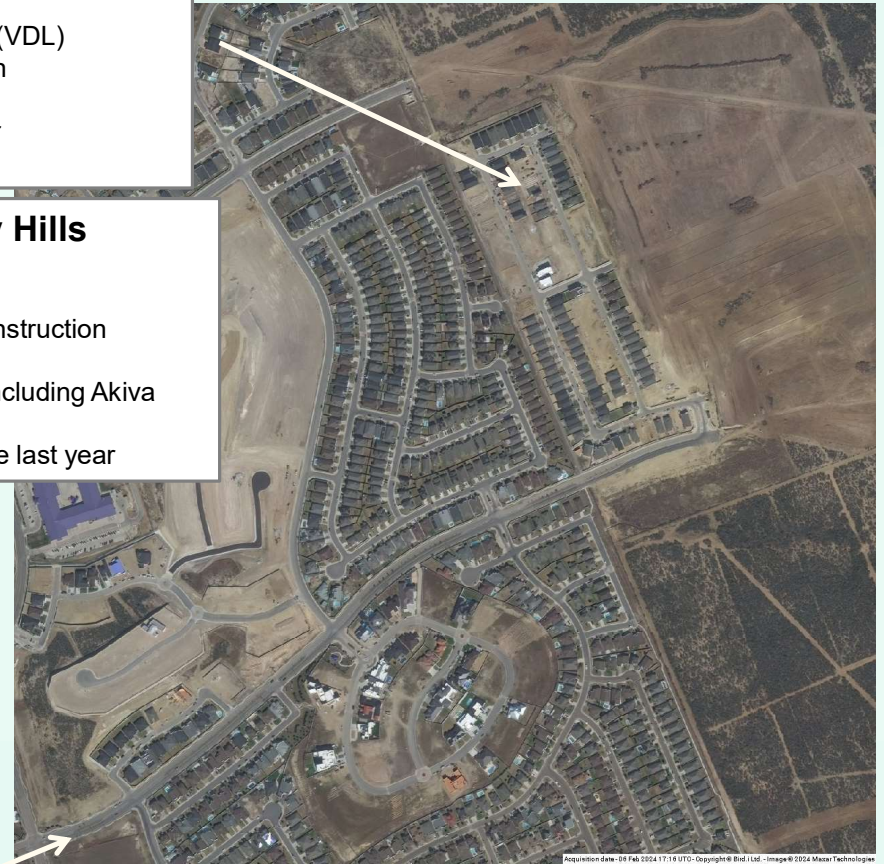
- 147 total lots
- 52 VDLs
- 48 homes under construction
- 47 occupied homes
- Builders: multiple, including Akiva and SKG Homes
- All homes built in the last year

### Las Palmas Townhomes

- 110 total future lots
- Groundwork Underway

### Sine Las Palmas

- 65 total lots
- 41 VDLs
- 4 homes under construction
- 20 occupied homes
- Builder: SKG Homes
- All homes build in the last year



Acquisition date - 06 Feb 2024 17:16 UTC - Copyright © Bing, Ltd. - Image © 2024 Maxar Technologies

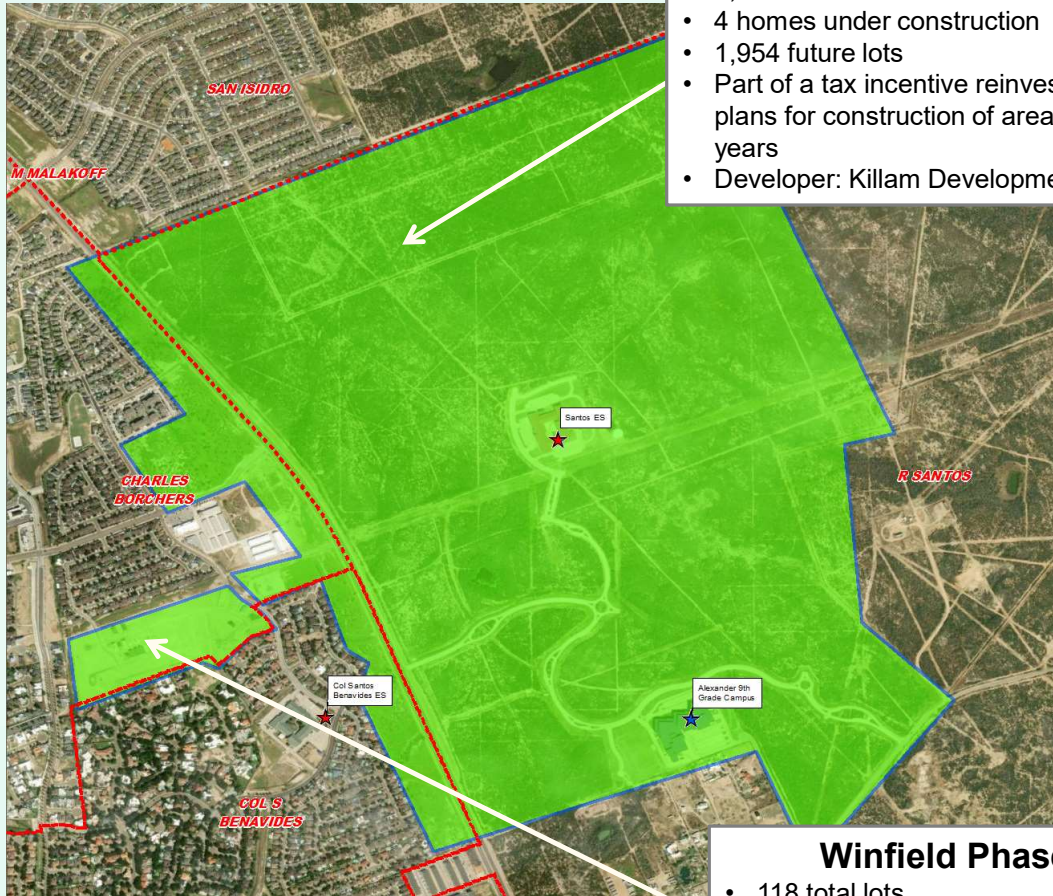


# Residential Activity

## The Coves at Winfield

- 1,954 total lots
- 4 homes under construction
- 1,954 future lots
- Part of a tax incentive reinvestment zone; plans for construction of area over 30 years
- Developer: Killam Development

*February 2024*



## Winfield Phase 9

- 118 total lots
- 55 VDLs
- 8 homes under construction
- 66 occupied homes





# Residential Activity

## Windmill

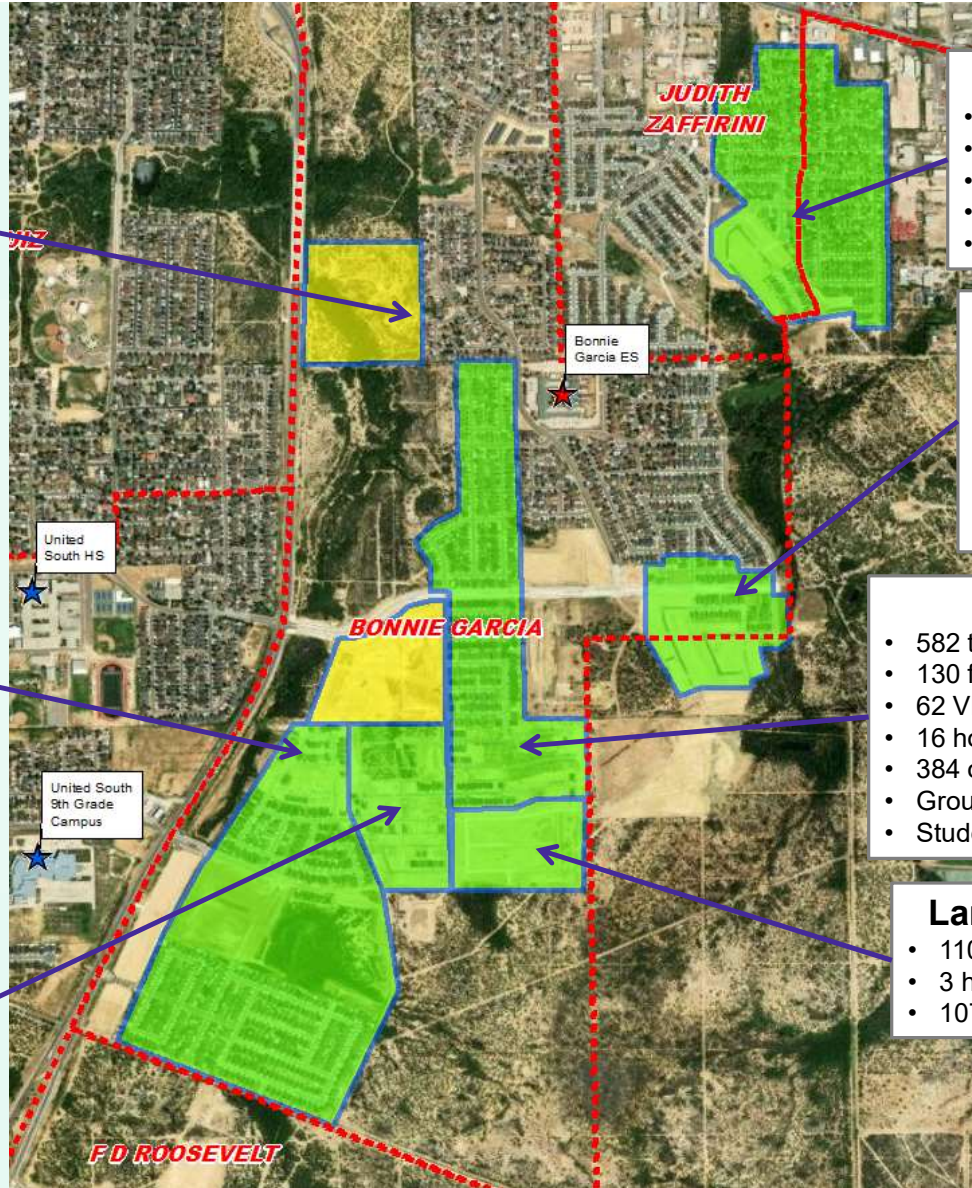
- 99 total future lots
- Plat filed March 2023, but no construction as of present

## Wright Ranch

- 675 total lots
- 220 future lots
- 3 homes under construction
- 10 VDL
- 442 occupied
- Groundwork underway on 66 lots in phase VIII
- Builder: View Homes
- Approx. 50 homes built in last year
- Student Yield: .71

## Copper Creek

- 112 total lots
- 13 homes under construction
- 58 VDL
- 41 occupied
- Builder: SKG Homes



## Las Misiones

- 525 total lots
- 5 homes under construction
- 60 VDL
- 460 occupied
- Student Yield: .861

## Lago del Vista Phase VII

- 140 total lots
- 12 homes under construction
- 65 VDL
- 63 occupied
- Student Yield: .861

## Los Presidentes

- 582 total lots
- 130 future lots
- 62 VDLs
- 16 homes under construction
- 384 occupied homes
- Groundwork underway on next phase
- Student Yield: .677

## Laredo FV Development

- 110 total lots
- 3 homes under construction
- 107 VDL



# Residential Activity

**R&W Ranch**

- 210 total lots
- 36 future lots
- 14 VDLs
- 4 homes under construction
- 156 occupied homes
- Groundwork underway
- Approximately 20 homes built in the last year
- Student Yield: .416

**Lomas Del Sur Futures**

- 200 total future lots
- Groundwork underway

**Vista Del Sur Phase 1**

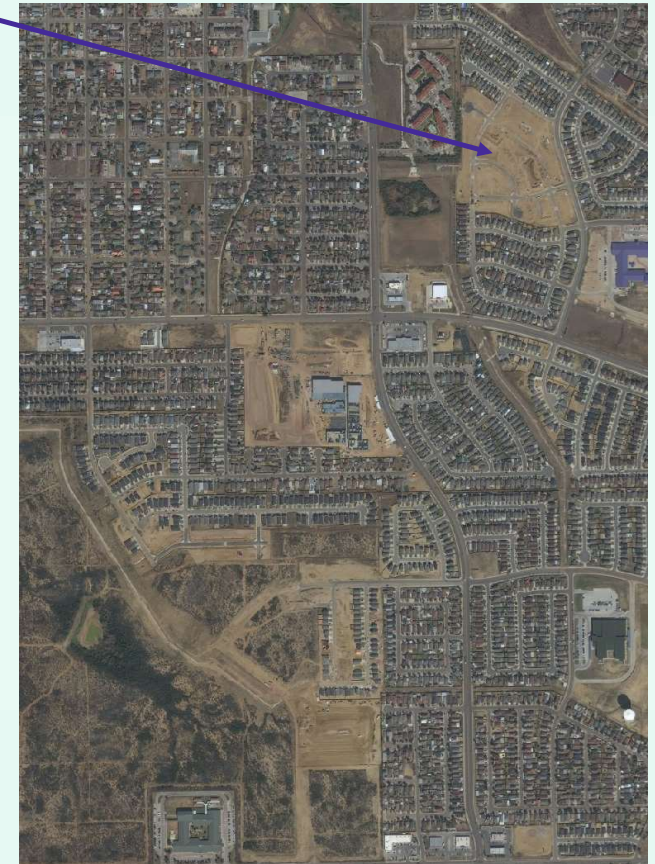
- 84 total lots
- 9 homes under construction
- 20 VDL
- 55 occupied homes
- All construction done in the last year

**Lomas Del Sur Phase XXI**

- 48 total lots
- 5 VDL
- 43 occupied homes



February 2024





# Residential Activity



**El Eden Stage XVIII**

- 81 total lots
- 28 VDLs
- 15 homes under construction
- 38 occupied homes
- Builder: SKG Homes
- All homes built in past year

**El Eden Phase XXIII**

- 116 total future lots
- Final plat filed March 2024
- Groundwork underway

*February 2024*





# Residential Activity

## El Eden Unit XI

- 242 total units
- 120 futures
- 33 VDLs
- 6 homes under construction
- 83 occupied homes
- Groundwork underway on futures
- Building approximately 40 homes per year



## El Sendero

- 69 total future lots
- Final plat filed February 2024
- Groundwork underway



## Las Aldeas

- 476 total units
- 272 futures
- 171 VDLs
- 9 homes under construction
- 22 occupied homes
- All construction done in the past year
- Groundwork underway on phase 2

February 2024





## Multifamily Activity



*April 2024*



- Unnamed Development Complex**
- 50 units under construction
  - Land owned by Joeman Property Management



# Multifamily Activity

• There are nearly 530 future multi-family units in various stages of planning across the district

**Calle Del Norte**

- 55 future units
- Estimated to start construction spring 2024 and start leasing units in spring 2025

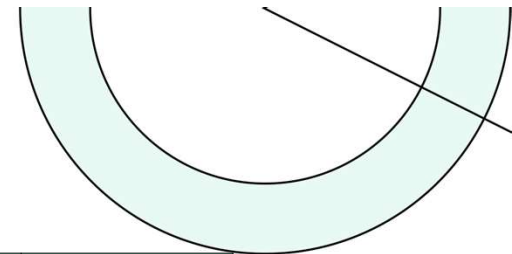


**Hillside Crossing**

- 120 future units
- Estimated to start construction spring 2024 and start leasing units in spring 2025



# TEA Transfer Report



Transfers In From:	2018/19	2019/20	2020/21	2021/22	2022/23	2023/24	5 Year Change
Laredo ISD	128	142	144	115	117	134	+6
Zapata County ISD	0	0	0	3	3	3	+3
<b>Total Transfers In*</b>	<b>128</b>	<b>142</b>	<b>144</b>	<b>118</b>	<b>120</b>	<b>137</b>	<b>+9</b>

Transfers Out To:	2018/19	2019/20	2020/21	2021/22	2022/23	2023/24	5 Year Change
Cotulla ISD	16	12	15	19	16	13	-3
Fort Stockton ISD	0	0	0	0	0	19	+19
Great Hearts Texas	0	0	0	0	0	14	+14
Hallsville ISD	3	17	25	162	76	64	+61
Harmony Public Schools – South Texas	855	933	1,011	1,071	1,170	1,164	+309
Laredo ISD	1,142	1,217	1,215	1,331	1,463	1,414	+272
Premier High Schools	36	27	40	57	36	27	-9
Roscoe Collegiate ISD	0	0	0	71	32	31	+31
Triumph Public High Schools – Laredo**	181	156	128	85	115	146	-35
<b>Total Transfers Out*</b>	<b>2,246</b>	<b>2,535</b>	<b>2,531</b>	<b>2,830</b>	<b>2,950</b>	<b>2,917</b>	<b>671</b>

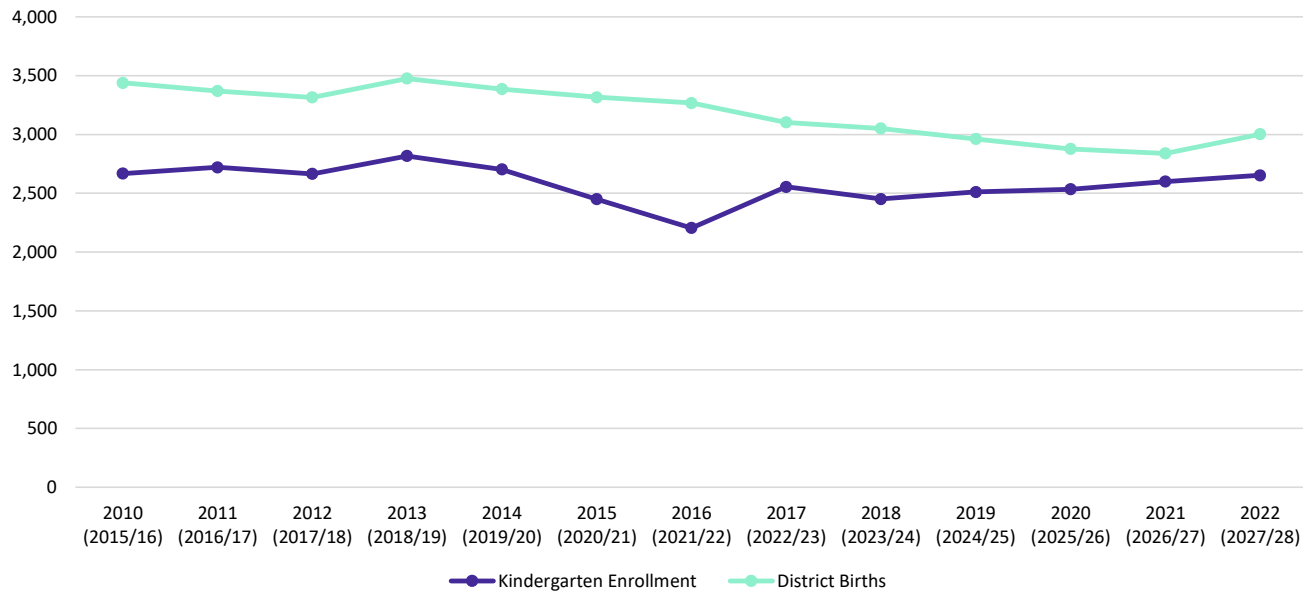
\* Totals include additional districts due to TEA rounding rules

\*\*Formerly Gateway Academy Charter District



# Birth Rate Data

United ISD KG Enrollment v. District Births

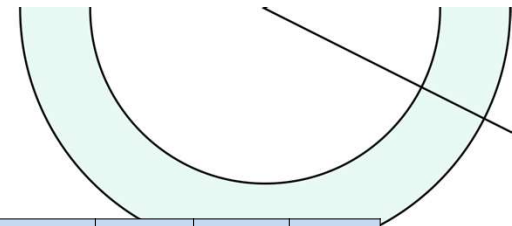


Year	District Births by Zipcode	Kindergarten Enrollment	Ratio
2010 (2015/16)	3,439	2,667	0.776
2011 (2016/17)	3,370	2,720	0.807
2012 (2017/18)	3,315	2,665	0.804
2013 (2018/19)	3,475	2,816	0.810
2014 (2019/20)	3,386	2,703	0.798
2015 (2020/21)	3,316	2,450	0.739
2016 (2021/22)	3,267	2,206	0.675
2017 (2022/23)	3,102	2,554	0.823
2018 (2023/24)	3,051	2,451	0.803
2019 (2024/25)	2,962	2,511	0.848
2020 (2025/26)	2,877	2,533	0.880
2021 (2026/27)	2,840	2,599	0.915
2022 (2027/28)	3,002	2,652	0.883





# Annual Enrollment Changes



Year	EE	PK	K	1st	2nd	3rd	4th	5th	6th	7th	8th	9th	10th	11th	12th	Total	Total Growth	% Growth
2020/21	153	1,233	2,450	2,899	2,979	2,942	2,940	2,965	3,253	3,332	3,322	3,501	3,394	3,188	3,370	41,921	-1,097	-2.6%
2021/22	159	1,082	2,206	2,505	2,655	2,748	2,727	2,801	2,889	3,135	3,240	3,546	3,276	3,045	3,322	39,336	-2,585	-6.2%
2022/23	203	1,429	2,554	2,910	2,748	2,826	2,950	2,916	3,106	3,072	3,271	3,649	3,435	3,109	3,242	41,420	2,084	5.3%
2023/24	247	1,550	2,451	2,843	2,851	2,730	2,861	2,979	3,038	3,157	3,095	3,515	3,467	3,165	3,307	41,256	-164	-0.4%

*Yellow box = largest grade per year  
Green box = second largest grade per year*

Year	EE	PK	K	1st	2nd	3rd	4th	5th	6th	7th	8th	9th	10th	11th	12th	ELEM	MID	HS
3 YR avg	1.178	1.094	1.006	1.152	0.998	0.993	1.004	1.011	1.042	1.014	1.008	1.089	0.952	0.923	1.057	1.027	1.021	1.005
2019/20	1.028	0.993	1.047	1.041	1.003	1.017	0.987	0.978	0.926	1.000	1.021	1.085	0.998	0.884	0.888	1.012	0.982	0.964
2020/21	0.832	0.778	0.906	1.073	0.966	0.997	1.001	0.997	1.025	1.006	0.998	1.070	0.949	0.938	1.079	0.990	1.010	1.009
2021/22	1.039	0.878	0.900	1.022	0.916	0.922	0.927	0.953	0.974	0.964	0.972	1.067	0.936	0.897	1.042	0.940	0.970	0.986
2022/23	1.277	1.321	1.158	1.319	1.097	1.064	1.074	1.069	1.109	1.063	1.043	1.126	0.969	0.949	1.065	1.130	1.072	1.027
2023/24	1.217	1.085	0.960	1.113	0.980	0.993	1.012	1.010	1.042	1.016	1.007	1.075	0.950	0.921	1.064	1.011	1.022	1.002

- District Enrollment declined by 164 Students from the Fall of the 2022-23 School Year
- Kindergarten declined by over 100 students
- Strong secondary cohorts likely reflect students returning from charter or private schools



# Ten Year Forecast by Grade Level

Year (Oct.)	EE	PK	K	1st	2nd	3rd	4th	5th	6th	7th	8th	9th	10th	11th	12th	Total	Growth	% Growth
2019/20	184	1,584	2,703	3,085	2,952	2,936	2,974	3,174	3,312	3,328	3,272	3,578	3,400	3,123	3,413	43,018	-49	-0.1%
2020/21	153	1,233	2,450	2,899	2,979	2,942	2,940	2,965	3,253	3,332	3,322	3,501	3,394	3,188	3,370	41,921	-1,097	-2.6%
2021/22	159	1,082	2,206	2,505	2,655	2,748	2,727	2,801	2,889	3,135	3,240	3,546	3,276	3,045	3,322	39,336	-2,585	-6.2%
2022/23	203	1,429	2,554	2,910	2,748	2,826	2,950	2,916	3,106	3,072	3,271	3,649	3,435	3,109	3,242	41,420	2,084	5.3%
2023/24	247	1,550	2,451	2,843	2,851	2,730	2,861	2,979	3,038	3,157	3,095	3,515	3,467	3,165	3,307	41,256	-164	-0.4%
2024/25	247	1,546	2,511	2,620	2,836	2,865	2,724	2,897	3,120	3,082	3,158	3,346	3,354	3,186	3,317	40,809	-447	-1.1%
2025/26	247	1,561	2,533	2,688	2,633	2,919	2,875	2,751	3,038	3,175	3,086	3,390	3,168	3,106	3,344	40,514	-295	-0.7%
2026/27	247	1,609	2,599	2,734	2,747	2,690	2,918	2,910	2,892	3,075	3,194	3,361	3,195	2,918	3,275	40,364	-150	-0.4%
2027/28	247	1,638	2,652	2,783	2,753	2,797	2,697	2,956	3,003	2,933	3,085	3,446	3,123	2,944	3,056	40,113	-251	-0.6%
2028/29	247	1,652	2,677	2,839	2,806	2,812	2,797	2,733	3,052	3,047	2,944	3,324	3,325	2,884	3,086	40,225	112	0.3%
2029/30	247	1,681	2,703	2,869	2,858	2,843	2,797	2,832	2,861	3,090	3,069	3,197	3,180	3,069	3,028	40,324	99	0.2%
2030/31	247	1,708	2,753	2,896	2,886	2,899	2,832	2,832	2,959	2,904	3,103	3,338	3,061	2,935	3,222	40,575	251	0.6%
2031/32	247	1,733	2,791	2,950	2,911	2,930	2,881	2,864	2,965	3,002	2,928	3,466	3,157	2,822	3,081	40,728	153	0.4%
2032/33	247	1,757	2,822	2,992	2,966	2,950	2,913	2,912	2,997	3,006	3,024	3,199	3,335	2,910	2,961	40,991	263	0.6%
2033/34	247	1,785	2,865	3,026	3,011	3,010	2,935	2,942	3,045	3,040	3,027	3,289	3,079	3,075	3,051	41,427	436	1.1%

**Yellow box** = largest grade per year  
**Green box** = second largest grade per year



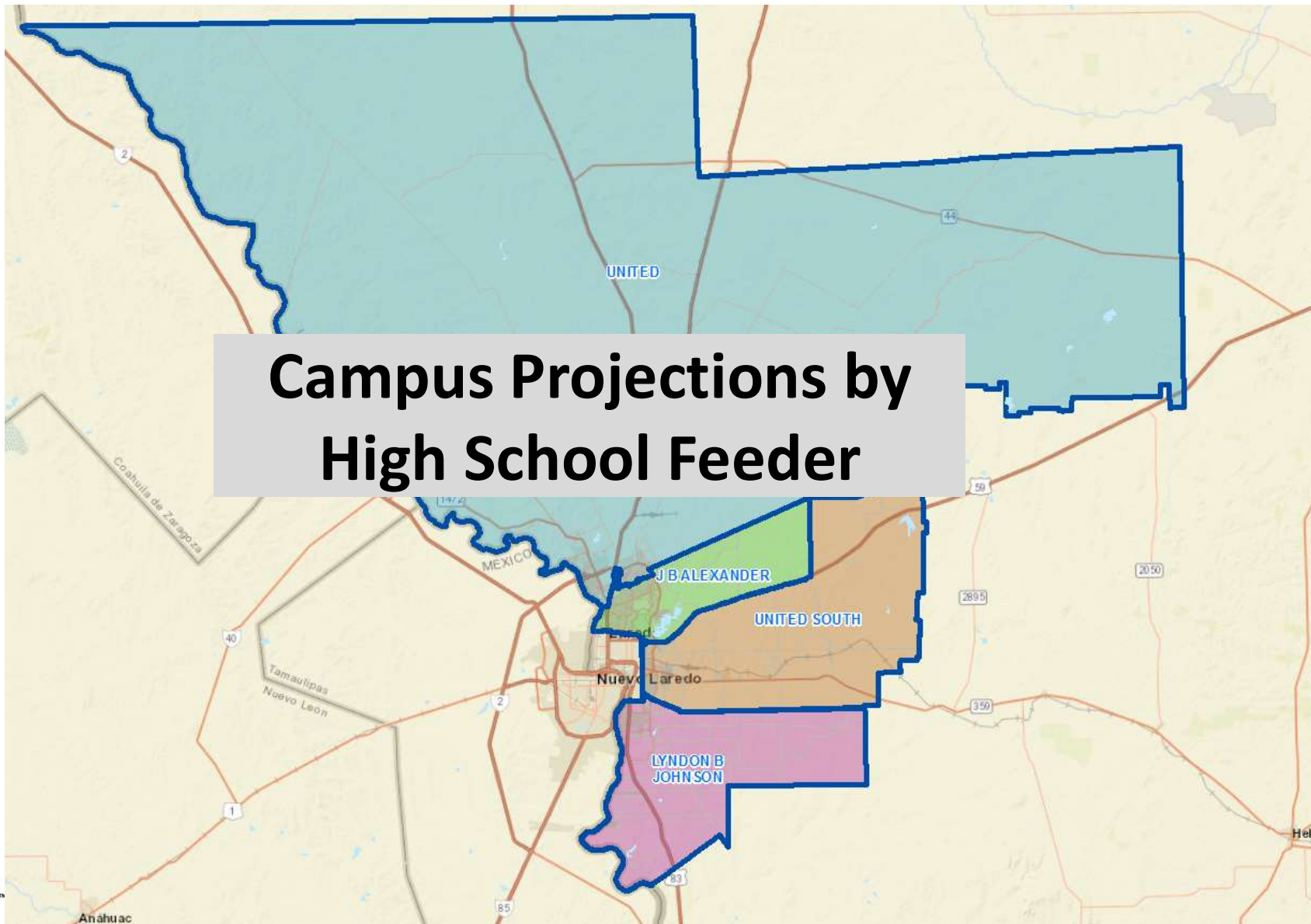
# Ten Year Forecast by Campus Level - Elementary

Campus	Capacity	2023/24 %	Fall	ENROLLMENT PROJECTIONS									
	w/ Portables	Utilization	2023/24	2024/25	2025/26	2026/27	2027/28	2028/29	2029/30	2030/31	2031/32	2032/33	2033/34
Arndt Elementary School	1,062	78%	797	796	781	802	784	783	787	790	797	804	811
Borchers Elementary School	942	66%	502	460	463	452	438	438	446	451	456	458	462
Centeno Elementary School	984	98%	800	821	850	859	860	862	875	882	888	895	901
Clark Elementary School	690	59%	382	360	358	363	340	335	342	345	349	350	350
Colonel Santos Benavides Elementary School	994	104%	828	788	780	769	760	757	746	740	740	739	742
Cuellar Elementary School	746	73%	505	492	487	498	509	502	514	515	517	523	527
De Llano Elementary School	612	91%	437	457	452	459	459	449	450	450	453	454	455
Fasken Elementary School	844	92%	724	690	668	665	646	635	641	646	652	657	663
Finley Elementary School	666	78%	484	517	535	576	611	633	638	646	653	659	666
Freedom Elementary School	864	81%	663	710	747	783	800	810	817	820	827	836	842
Garcia Elementary School	1,020	86%	615	646	671	677	673	676	689	714	736	749	763
Gutierrez Elementary School	648	65%	406	389	387	367	372	364	375	381	391	401	408
Juarez/Limcoln @ D.D. Hachar ES	790	83%	584	564	553	545	532	537	538	538	549	546	545
Kazan Elementary School	580	82%	367	355	344	342	342	337	352	363	376	388	398
Kennedy-Zapata Elementary School	534	70%	341	345	331	342	340	329	348	360	373	391	411
Killam Elementary School	812	87%	630	626	610	612	584	580	590	590	598	607	613
Malakoff Elementary School	864	77%	601	603	612	640	648	657	670	667	657	651	643
Muller Elementary School	910	108%	809	798	817	837	862	860	863	869	879	885	892
Newman Elementary School	908	57%	391	402	406	411	413	415	417	420	422	424	425
Nye Elementary School	820	89%	692	678	669	672	674	698	703	710	718	725	732
Perez Elementary School	778	84%	597	608	612	612	625	622	632	639	644	652	658
Prada Elementary School	864	91%	743	759	781	763	771	758	765	781	786	795	801
Roberto Santos Elementary School	886	71%	564	584	617	673	723	771	806	853	910	977	1,057
Roosevelt Elementary School	766	89%	643	628	645	653	655	672	691	707	723	738	755
Ruiz Elementary School	854	95%	733	525	428	437	430	422	436	441	438	443	443
Salinas Elementary School	854	93%	753	744	706	691	689	676	695	723	748	774	802
San Isidro Elementary School	918	100%	828	819	796	771	786	810	813	816	822	824	821
Trautmann Elementary School	954	75%	683	668	654	687	683	682	673	658	654	655	661
Veterans Memorial Elementary School	854	100%	807	795	811	829	833	817	837	855	863	864	872
Zaffirini Elementary School	996	79%	603	622	637	668	681	677	680	682	688	695	701
<b>ELEMENTARY SCHOOL TOTALS</b>	<b>25,014</b>	<b>84%</b>	<b>18,512</b>	<b>18,246</b>	<b>18,207</b>	<b>18,454</b>	<b>18,523</b>	<b>18,563</b>	<b>18,830</b>	<b>19,053</b>	<b>19,307</b>	<b>19,559</b>	<b>19,821</b>
Elementary School Absolute Growth			-24	-266	-39	247	69	40	267	223	254	252	262
Elementary School Percent Growth			-0.13%	-1.44%	-0.21%	1.35%	0.37%	0.22%	1.44%	1.18%	1.33%	1.30%	1.34%



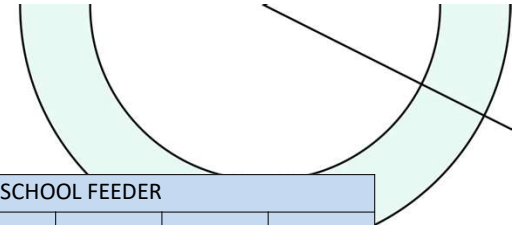
# Ten Year Forecast by Campus Level - Secondary

Campus	Capacity w/ Portables	2023/24 % Utilization	Fall 2023/24	ENROLLMENT PROJECTIONS									
				2024/25	2025/26	2026/27	2027/28	2028/29	2029/30	2030/31	2031/32	2032/33	2033/34
Bruni Vergara Middle School	1,109	76%	717	683	681	718	718	764	756	743	708	711	720
Clark Middle School	1,106	52%	576	574	564	570	573	606	599	585	571	582	591
Elias Herrera Middle School	1,274	83%	1,055	1,133	1,138	1,165	1,137	1,085	1,060	1,051	1,074	1,093	1,103
Garcia Middle School	1,081	32%	343	336	332	339	349	357	338	323	312	321	325
Gonzalez Middle School	1,218	69%	715	751	766	739	721	737	738	733	720	734	732
Los Obispos Middle School	1,244	63%	658	668	630	638	634	663	654	661	670	687	699
Raul Perales Middle School	903	71%	642	644	663	647	711	777	817	818	818	830	846
Ricardo Molina Middle School	894	86%	769	767	729	721	740	745	749	730	722	734	744
Roberto Ramirez Middle School	894	0%	0	484	482	490	460	488	477	488	472	483	485
Trautmann Middle School	1,303	73%	744	779	805	754	740	693	724	723	728	721	702
United Middle School	895	78%	685	664	643	644	622	609	606	627	645	636	642
United Middle 6th Campus	736	43%	314	322	318	301	303	299	324	317	316	322	322
United South Middle School	1,352	85%	894	825	797	697	590	502	443	427	400	420	440
Washington Middle School	1,388	108%	1,093	645	666	653	638	633	650	655	654	668	676
STEP Academy			55	55	55	55	55	55	55	55	55	55	55
Alternative Campuses			30	30	30	30	30	30	30	30	30	30	30
<b>MIDDLE SCHOOL TOTALS</b>	<b>15,397</b>	<b>67%</b>	<b>9,290</b>	<b>9,360</b>	<b>9,299</b>	<b>9,161</b>	<b>9,021</b>	<b>9,043</b>	<b>9,020</b>	<b>8,966</b>	<b>8,895</b>	<b>9,027</b>	<b>9,112</b>
Middle School Absolute Growth			-159	70	-61	-138	-140	22	-23	-54	-71	132	85
Middle School Percent Growth			-1.68%	0.75%	-0.65%	-1.48%	-1.53%	0.24%	-0.25%	-0.60%	-0.79%	1.48%	0.94%
Alexander High School	2,502	95%	2,330	2,367	2,414	2,457	2,481	2,533	2,518	2,435	2,388	2,336	2,385
AHS 9th Grade Campus	1,197	71%	848	842	877	862	891	863	793	856	828	844	853
LB Johnson High School	2,727	99%	2,364	2,352	2,396	2,410	2,339	2,334	2,266	2,283	2,292	2,361	2,328
LBJ 9th Grade Campus	1,197	76%	907	876	901	823	867	824	860	891	919	831	854
United High School	3,123	87%	2,711	2,613	2,445	2,295	2,190	2,250	2,285	2,290	2,226	2,295	2,287
UHS 9th Grade Campus	1,185	72%	856	747	726	737	806	766	753	756	851	751	768
United South High School	2,709	89%	2,398	2,389	2,227	2,090	1,977	2,042	2,072	2,074	2,018	2,078	2,069
USHS 9th Grade Campus	1,172	73%	854	831	836	889	832	821	741	785	818	723	764
STEP Academy	350	37%	130	130	130	130	130	130	130	130	130	130	130
Alternative Campuses			56	56	56	56	56	56	56	56	56	56	56
<b>HIGH SCHOOL TOTALS</b>	<b>16,162</b>	<b>85%</b>	<b>13,454</b>	<b>13,203</b>	<b>13,008</b>	<b>12,749</b>	<b>12,569</b>	<b>12,619</b>	<b>12,474</b>	<b>12,556</b>	<b>12,526</b>	<b>12,405</b>	<b>12,494</b>
High School Absolute Growth			8	-251	-195	-259	-180	50	-145	82	-30	-121	89
High School Percent Growth			0.06%	-1.87%	-1.48%	-1.99%	-1.41%	0.40%	-1.15%	0.66%	-0.24%	-0.97%	0.72%
<b>DISTRICT TOTALS</b>	<b>56,573</b>	<b>80%</b>	<b>41,256</b>	<b>40,809</b>	<b>40,514</b>	<b>40,364</b>	<b>40,113</b>	<b>40,225</b>	<b>40,324</b>	<b>40,575</b>	<b>40,728</b>	<b>40,991</b>	<b>41,427</b>
District Absolute Growth			-175	-447	-295	-150	-251	112	99	251	153	263	436
District Percent Growth			-0.4%	-1.1%	-0.7%	-0.4%	-0.6%	0.3%	0.2%	0.6%	0.4%	0.6%	1.1%





# Campus Projection by Feeder: Alexander High School



Campus	Capacity w/ Portables	Fall	ENROLLMENT PROJECTIONS - ALEXANDER HIGH SCHOOL FEEDER									
		2023/24	2024/25	2025/26	2026/27	2027/28	2028/29	2029/30	2030/31	2031/32	2032/33	2033/34
Borchers Elementary School (13%)	122	65	60	60	59	57	57	58	59	59	60	60
Clark Elementary School	690	382	360	358	363	340	335	342	345	349	350	350
Colonel Santos Benavides Elementary School	994	828	788	780	769	760	757	746	740	740	739	742
De Llano Elementary School (57%)	349	249	260	258	261	262	256	257	257	258	259	260
Gutierrez Elementary School	648	406	389	387	367	372	364	375	381	391	401	408
Nye Elementary School	820	692	678	669	672	674	698	703	710	718	725	732
Roberto Santos Elementary School	886	564	584	617	673	723	771	806	853	910	977	1,057
Trautmann Elementary School	954	683	668	654	687	683	682	673	658	654	655	661
<b>ELEMENTARY SCHOOL TOTALS</b>	<b>5,463</b>	<b>3,869</b>	<b>3,787</b>	<b>3,782</b>	<b>3,851</b>	<b>3,871</b>	<b>3,920</b>	<b>3,959</b>	<b>4,002</b>	<b>4,080</b>	<b>4,166</b>	<b>4,270</b>
Elementary School Absolute Growth		60	-82	-5	69	19	49	39	43	78	86	104
Elementary School Percent Growth		1.58%	-2.13%	-0.13%	1.83%	0.51%	1.27%	0.99%	1.09%	1.95%	2.10%	2.50%
Clark Middle School	1,106	576	574	564	570	573	606	599	585	571	582	591
Trautmann Middle School	1,303	744	779	805	754	740	693	724	723	728	721	702
United Middle School	895	685	664	643	644	622	609	606	627	645	636	642
United Middle 6th Campus	736	314	322	318	301	303	299	324	317	316	322	322
<b>MIDDLE SCHOOL TOTALS</b>	<b>4,040</b>	<b>2,319</b>	<b>2,339</b>	<b>2,330</b>	<b>2,269</b>	<b>2,238</b>	<b>2,207</b>	<b>2,253</b>	<b>2,252</b>	<b>2,260</b>	<b>2,261</b>	<b>2,257</b>
Middle School Absolute Growth		-24	20	-9	-61	-31	-31	46	-1	8	1	-4
Middle School Percent Growth		-1.02%	0.86%	-0.38%	-2.62%	-1.37%	-1.39%	2.08%	-0.04%	0.36%	0.04%	-0.18%
Alexander High School	2,502	2,330	2,367	2,414	2,457	2,481	2,533	2,518	2,435	2,388	2,336	2,385
AHS 9th Grade Campus	1,197	848	842	877	862	891	863	793	856	828	844	853
<b>HIGH SCHOOL TOTALS</b>	<b>3,699</b>	<b>3,178</b>	<b>3,209</b>	<b>3,291</b>	<b>3,319</b>	<b>3,372</b>	<b>3,396</b>	<b>3,311</b>	<b>3,291</b>	<b>3,216</b>	<b>3,180</b>	<b>3,238</b>
High School Absolute Growth		108	31	82	28	53	24	-85	-20	-75	-36	58
High School Percent Growth		3.52%	0.98%	2.56%	0.85%	1.60%	0.71%	-2.50%	-0.60%	-2.28%	-1.12%	1.82%
<b>FEEDER TOTALS</b>	<b>13,202</b>	<b>9,366</b>	<b>9,335</b>	<b>9,403</b>	<b>9,439</b>	<b>9,481</b>	<b>9,523</b>	<b>9,523</b>	<b>9,545</b>	<b>9,556</b>	<b>9,607</b>	<b>9,765</b>
District Absolute Growth		144	-31	68	36	41	42	0	22	11	51	158
District Percent Growth		1.6%	-0.3%	0.7%	0.4%	0.4%	0.4%	0.0%	0.2%	0.1%	0.5%	1.6%

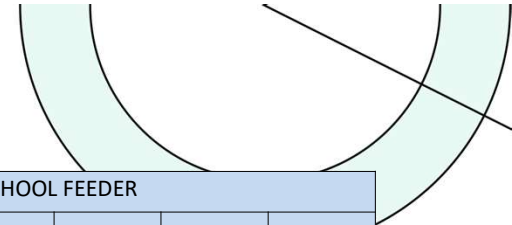


# Campus Projection by Feeder: Lyndon B Johnson High School

Campus	Capacity w/ Portables	Fall	ENROLLMENT PROJECTIONS - LYNDON B JOHNSON HIGH SCHOOL FEEDER									
		2023/24	2024/25	2025/26	2026/27	2027/28	2028/29	2029/30	2030/31	2031/32	2032/33	2033/34
Arndt Elementary School	1,062	797	796	781	802	784	783	787	790	797	804	811
Centeno Elementary School	984	800	821	850	859	860	862	875	882	888	895	901
Juarez/Lincoln @ D.D. Hachar ES	790	584	564	553	545	532	537	538	538	549	546	545
Kennedy-Zapata Elementary School	534	341	345	331	342	340	329	348	360	373	391	411
Perez Elementary School	778	597	608	612	612	625	622	632	639	644	652	658
Prada Elementary School	864	743	759	781	763	771	758	765	781	786	795	801
Roosevelt Elementary School	766	643	628	645	653	655	672	691	707	723	738	755
Salinas Elementary School (35%)	299	264	260	247	242	241	237	243	253	262	271	281
Veterans Memorial Elementary School	854	807	795	811	829	833	817	837	855	863	864	872
<b>ELEMENTARY SCHOOL TOTALS</b>	<b>6,931</b>	<b>5,576</b>	<b>5,575</b>	<b>5,611</b>	<b>5,645</b>	<b>5,641</b>	<b>5,616</b>	<b>5,716</b>	<b>5,806</b>	<b>5,884</b>	<b>5,956</b>	<b>6,035</b>
Elementary School Absolute Growth		-46	0	35	35	-5	-25	101	89	79	72	79
Elementary School Percent Growth		-0.81%	0.00%	0.63%	0.62%	-0.08%	-0.45%	1.79%	1.56%	1.35%	1.22%	1.33%
Bruni Vergara Middle School	1,109	717	683	681	718	718	764	756	743	708	711	720
Garcia Middle School	1,081	343	336	332	339	349	357	338	323	312	321	325
Los Obispos Middle School	1,244	658	668	630	638	634	663	654	661	670	687	699
Ricardo Molina Middle School	894	769	767	729	721	740	745	749	730	722	734	744
<b>MIDDLE SCHOOL TOTALS</b>	<b>4,328</b>	<b>2,487</b>	<b>2,454</b>	<b>2,372</b>	<b>2,416</b>	<b>2,441</b>	<b>2,529</b>	<b>2,497</b>	<b>2,457</b>	<b>2,412</b>	<b>2,453</b>	<b>2,488</b>
Middle School Absolute Growth		-45	-33	-82	44	25	88	-32	-40	-45	41	35
Middle School Percent Growth		-1.78%	-1.33%	-3.34%	1.85%	1.03%	3.61%	-1.27%	-1.60%	-1.83%	1.70%	1.43%
LB Johnson High School	2,727	2,364	2,352	2,396	2,410	2,339	2,334	2,266	2,283	2,292	2,361	2,328
LBJ 9th Grade Campus	1,197	907	876	901	823	867	824	860	891	919	831	854
<b>HIGH SCHOOL TOTALS</b>	<b>3,924</b>	<b>3,271</b>	<b>3,228</b>	<b>3,297</b>	<b>3,233</b>	<b>3,206</b>	<b>3,158</b>	<b>3,126</b>	<b>3,174</b>	<b>3,211</b>	<b>3,192</b>	<b>3,182</b>
High School Absolute Growth		19	-43	69	-64	-27	-48	-32	48	37	-19	-10
High School Percent Growth		0.58%	-1.31%	2.14%	-1.94%	-0.84%	-1.50%	-1.01%	1.54%	1.17%	-0.59%	-0.31%
<b>FEEDER TOTALS</b>	<b>15,183</b>	<b>11,334</b>	<b>11,257</b>	<b>11,280</b>	<b>11,294</b>	<b>11,288</b>	<b>11,303</b>	<b>11,339</b>	<b>11,437</b>	<b>11,507</b>	<b>11,601</b>	<b>11,705</b>
District Absolute Growth		-72	-76	22	15	-7	15	37	97	71	94	104
District Percent Growth		-0.6%	-0.7%	0.2%	0.1%	-0.1%	0.1%	0.3%	0.9%	0.6%	0.8%	0.9%



# Campus Projection by Feeder: United High School



Campus	Capacity w/ Portables	Fall	ENROLLMENT PROJECTIONS - UNITED HIGH SCHOOL FEEDER									
		2023/24	2024/25	2025/26	2026/27	2027/28	2028/29	2029/30	2030/31	2031/32	2032/33	2033/34
Borchers Elementary School (87%)	820	437	400	403	393	381	381	388	392	397	398	402
De Llano Elementary School (43%)	263	188	196	194	197	197	193	194	194	195	195	196
Fasken Elementary School	844	724	690	668	665	646	635	641	646	652	657	663
Finley Elementary School	666	484	517	535	576	611	633	638	646	653	659	666
Kazan Elementary School	580	367	355	344	342	342	337	352	363	376	388	398
Malakoff Elementary School	864	601	603	612	640	648	657	670	667	657	651	643
Muller Elementary School	910	809	798	817	837	862	860	863	869	879	885	892
San Isidro Elementary School	918	828	819	796	771	786	810	813	816	822	824	821
<b>ELEMENTARY SCHOOL TOTALS</b>	<b>5,865</b>	<b>4,438</b>	<b>4,378</b>	<b>4,370</b>	<b>4,422</b>	<b>4,473</b>	<b>4,506</b>	<b>4,559</b>	<b>4,594</b>	<b>4,630</b>	<b>4,657</b>	<b>4,680</b>
Elementary School Absolute Growth		-5	-60	-8	52	51	33	53	35	36	28	23
Elementary School Percent Growth		-0.12%	-1.35%	-0.19%	1.19%	1.15%	0.74%	1.19%	0.76%	0.78%	0.60%	0.49%
Elias Herrera Middle School	1,274	1,055	1,133	1,138	1,165	1,137	1,085	1,060	1,051	1,074	1,093	1,103
Roberto Ramirez Middle School	894	0	484	482	490	460	488	477	488	472	483	485
Washington Middle School	1,388	1,093	645	666	653	638	633	650	655	654	668	676
<b>MIDDLE SCHOOL TOTALS</b>	<b>3,556</b>	<b>2,148</b>	<b>2,262</b>	<b>2,286</b>	<b>2,308</b>	<b>2,235</b>	<b>2,206</b>	<b>2,187</b>	<b>2,194</b>	<b>2,200</b>	<b>2,244</b>	<b>2,264</b>
Middle School Absolute Growth		-61	114	24	22	-73	-29	-19	7	6	44	20
Middle School Percent Growth		-2.76%	5.31%	1.06%	0.96%	-3.16%	-1.30%	-0.86%	0.32%	0.27%	2.00%	0.89%
United High School	3,123	2,711	2,613	2,445	2,295	2,190	2,250	2,285	2,290	2,226	2,295	2,287
UHS 9th Grade Campus	1,185	856	747	726	737	806	766	753	756	851	751	768
<b>HIGH SCHOOL TOTALS</b>	<b>4,308</b>	<b>3,567</b>	<b>3,360</b>	<b>3,171</b>	<b>3,032</b>	<b>2,996</b>	<b>3,016</b>	<b>3,038</b>	<b>3,046</b>	<b>3,077</b>	<b>3,046</b>	<b>3,055</b>
High School Absolute Growth		-77	-207	-189	-139	-36	20	22	8	31	-31	9
High School Percent Growth		-2.11%	-5.80%	-5.63%	-4.38%	-1.19%	0.67%	0.73%	0.26%	1.02%	-1.01%	0.30%
<b>FEEDER TOTALS</b>	<b>13,729</b>	<b>10,153</b>	<b>10,000</b>	<b>9,827</b>	<b>9,762</b>	<b>9,704</b>	<b>9,728</b>	<b>9,784</b>	<b>9,834</b>	<b>9,907</b>	<b>9,947</b>	<b>9,999</b>
District Absolute Growth		-143	-153	-173	-65	-58	24	56	50	73	41	52
District Percent Growth		-1.4%	-1.5%	-1.7%	-0.7%	-0.6%	0.2%	0.6%	0.5%	0.7%	0.4%	0.5%

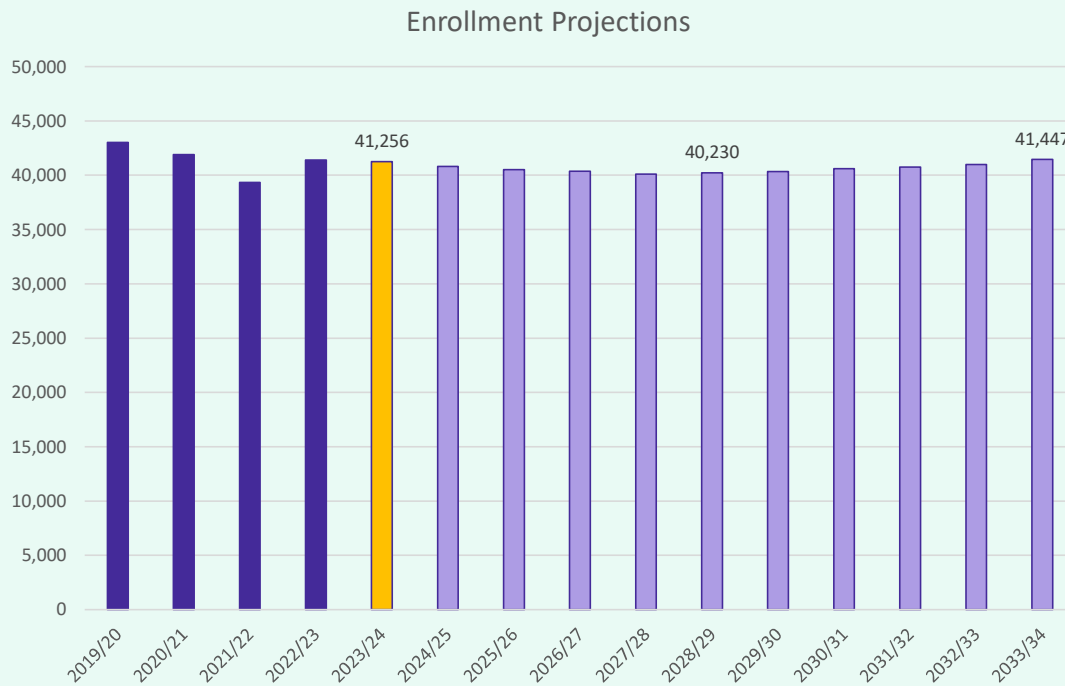




# Campus Projection by Feeder: United South High School

Campus	Capacity w/ Portables	Fall	ENROLLMENT PROJECTIONS - UNITED SOUTH HIGH SCHOOL FEEDER									
		2023/24	2024/25	2025/26	2026/27	2027/28	2028/29	2029/30	2030/31	2031/32	2032/33	2033/34
Cuellar Elementary School	746	505	492	487	498	509	502	514	515	517	523	527
Freedom Elementary School	864	663	710	747	783	800	810	817	820	827	836	842
Garcia Elementary School	1,020	615	646	671	677	673	676	689	714	736	749	763
Killam Elementary School	812	630	626	610	612	584	580	590	590	598	607	613
Ruiz Elementary School	854	733	525	428	437	430	422	436	441	438	443	443
Salinas Elementary School (65%)	555	489	484	459	449	448	439	452	470	486	503	521
Zaffirini Elementary School	996	603	622	637	668	681	677	680	682	688	695	701
<b>ELEMENTARY SCHOOL TOTALS</b>	<b>5,847</b>	<b>4,238</b>	<b>4,104</b>	<b>4,038</b>	<b>4,124</b>	<b>4,125</b>	<b>4,106</b>	<b>4,178</b>	<b>4,231</b>	<b>4,291</b>	<b>4,356</b>	<b>4,411</b>
Elementary School Absolute Growth		-28	-134	-66	86	1	-19	72	53	60	65	55
Elementary School Percent Growth		-0.66%	-3.17%	-1.61%	2.13%	0.02%	-0.45%	1.74%	1.27%	1.42%	1.51%	1.27%
Gonzalez Middle School	1,218	715	751	766	739	721	737	738	733	720	734	732
Raul Perales Middle School	903	642	644	663	647	711	777	817	818	818	830	846
United South Middle School	1,352	894	825	797	697	590	502	443	427	400	420	440
<b>MIDDLE SCHOOL TOTALS</b>	<b>3,473</b>	<b>2,251</b>	<b>2,220</b>	<b>2,226</b>	<b>2,083</b>	<b>2,022</b>	<b>2,016</b>	<b>1,998</b>	<b>1,978</b>	<b>1,938</b>	<b>1,984</b>	<b>2,018</b>
Middle School Absolute Growth		-29	-31	6	-143	-61	-6	-18	-20	-40	46	34
Middle School Percent Growth		-1.27%	-1.38%	0.27%	-6.42%	-2.93%	-0.30%	-0.89%	-1.00%	-2.02%	2.37%	1.71%
United South High School	2,709	2,398	2,389	2,227	2,090	1,977	2,042	2,072	2,074	2,018	2,078	2,069
USHS 9th Grade Campus	1,172	854	831	836	889	832	821	741	785	818	723	764
<b>HIGH SCHOOL TOTALS</b>	<b>3,881</b>	<b>3,252</b>	<b>3,220</b>	<b>3,063</b>	<b>2,979</b>	<b>2,809</b>	<b>2,863</b>	<b>2,813</b>	<b>2,859</b>	<b>2,836</b>	<b>2,801</b>	<b>2,833</b>
High School Absolute Growth		9	-32	-157	-84	-170	54	-50	46	-23	-35	32
High School Percent Growth		0.28%	-0.98%	-4.88%	-2.74%	-5.71%	1.92%	-1.75%	1.64%	-0.80%	-1.23%	1.14%
<b>FEEDER TOTALS</b>	<b>13,201</b>	<b>9,741</b>	<b>9,544</b>	<b>9,327</b>	<b>9,186</b>	<b>8,956</b>	<b>8,985</b>	<b>8,989</b>	<b>9,068</b>	<b>9,065</b>	<b>9,141</b>	<b>9,262</b>
District Absolute Growth		-48	-197	-217	-141	-230	29	4	79	-3	76	121
District Percent Growth		-0.5%	-2.0%	-2.3%	-1.5%	-2.5%	0.3%	0.0%	0.9%	0.0%	0.8%	1.3%

## Key Takeaways



- Strong housing activity continues throughout the district in 28 active developments
- An additional 12 future developments will also begin impacting the district over the next 10 years
- Large exiting 12<sup>th</sup> grade classes and smaller entering grades are moderating the impacts of new growth
- Enrollment is expected to drop to just over 40,000 students by the 2028-29 school year
- Eventually moderate gains will return and the district may reach almost 41,500 students by 2033-34



# Understanding Building Capacity.....

Following the Texas Education Code related to Facility Standards –

- Square footage for General Classrooms – Elementary – Pre-K – 1<sup>st</sup> – 36 SF per Student
  - Elementary – 2<sup>nd</sup> – 5<sup>th</sup> – 32 SF per Student
  - Secondary – 6<sup>th</sup> – 12<sup>th</sup> – 28 SF per Student
- Science Lab Rooms – 41 SF per Student
- Gymnasium/Physical Education Areas – Elementary School Level – 3,000 SF  
 Middle School Level – 4,800 SF  
 High School Level – 7,500 SF

Evaluating building code requirements –

- The City of Laredo is currently under the 2018 International Building Code requirements.

Gathering information on the building and use of the various spaces –

- Evaluating the building and the individual rooms related to the dimensions and purpose of each of those spaces. The areas are broken down into categories of standard classrooms, small group learning instructional spaces, fine arts & physical education spaces, campus support areas, basic needs within the building, and the circulation and structure within the building.

## Assessment –

Category of Space	# of Spaces	Square Footage	% of Bldg.	% Used/Day
Standard Classroom Spaces	#	#	%	%

CAMPUS NAME	
Standard Classrooms	Science Classrooms
# of Classrooms	# of Science Rooms
Average Square Ft.	Average Square Ft.
Square Footage #	Square Footage #
SF Requirement per Student	SF Requirement per Student
# of Students	# of Students
Minus Allocation of Classrooms for Flexibility	
# of Classrooms	
Periods in the Day	Periods in the Day
# of Periods	# of Periods
Classroom Student Totals	Science Student Totals
Combined Student Capacity #	
Add Students attending Fine Art/Athletic Classes at # per class X # of Class Locations = # of Students	
TOTAL OPERATIONAL STUDENT CAPACITY #	

# United Independent School District – Building Capacity Study

## Arndt Elementary School

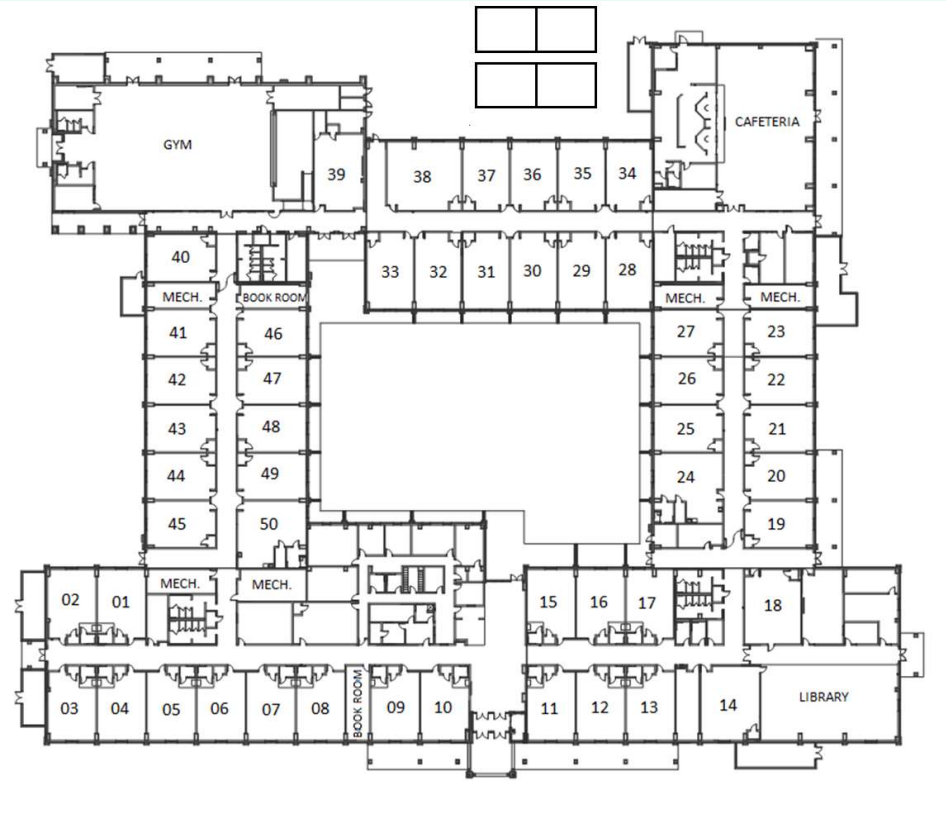


- STANDARD SIZE CLASSROOM SPACES
- SMALL GROUP/INDIVIDUAL LEARNING SPACES
- SPECIAL PROGRAM SPACES
- FINE ART PROGRAM SPACES (ART & MUSIC) AND PHYSICAL EDUCATION SPACES
- CAMPUS SUPPORT STAFF SPACES (ADMINISTRATIVE)
- BASIC NEED SPACES
- RESOURCES, STORAGE, & MEDIA SERVICE SPACES
- SCIENCE CLASSROOM AREAS

Campus	Standard Classrooms	Classroom Allocation for Science	Classroom Allocation for Support Programs	Allocation for Flex	Special Education Classroom Spaces	Operational Capacity Total
Arndt ES	53	2	6	2	6	
	X	X	X	x	x	
# of Students	22	-	22	-	22	+
	1,166		44		132	
					44	
					72	
						1,018

# United Independent School District – Building Capacity Study

## San Sidro Elementary School



# United Independent School District – Building Capacity Study

## San Isidro Elementary School



- - STANDARD SIZE CLASSROOM SPACES
- - SMALL GROUP/INDIVIDUAL LEARNING SPACES
- - SPECIAL PROGRAM SPACES
- - FINE ART PROGRAM SPACES (ART & MUSIC) AND PHYSICAL EDUCATION SPACES
- - CAMPUS SUPPORT STAFF SPACES (ADMINISTRATIVE)
- - BASIC NEED SPACES
- - RESOURCES, STORAGE, & MEDIA SERVICE SPACES
- - SCIENCE CLASSROOM AREAS
- 
- 

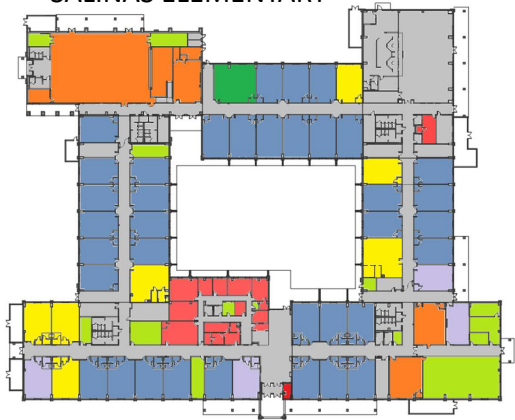
\*Portable Buildings are not included in the Capacity Calculations above. The Portable buildings add 88 Additional Student Capacity if included in the calculations.

Campus	Standard Classrooms	Classroom Allocation for Science	Classroom Allocation for Support Programs	Allocation for Flex	Special Education Classroom Spaces	Operational Capacity Total
San Isidro ES	42	1	4	2	5	830
	X	x	X	X	X	
# of Students	22	-	22	-	22	
	924	22	88	44	60	830

Category of Space	# of Spaces	Square Footage	% of Bldg.	% Used/Day
Standard Classrooms Spaces	40	35,879	34.2%	76%
Small Learning Spaces	4	3,350	3.2%	60%
Special Program Spaces	5	5,072	4.8%	Varies
Fine Art & Physical Ed Spaces	5	10,024	9.6%	90%
Campus Support Spaces	12	4,159	4.0%	Varies
Basic Need Spaces	Multiple	14,787	14.1%	Varies
Resource & Storage Spaces	Multiple	6,459	6.2%	N/A
Circulation Spaces	Throughout	25,270	23.9%	100%
<b>Totals</b>		<b>105,000</b>	<b>100%</b>	

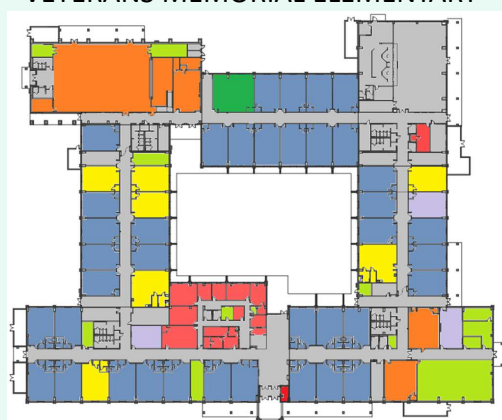
Specific needs and uses of the classroom spaces in each of the prototype elementary buildings can cause different operational capacities for each.

SALINAS ELEMENTARY –



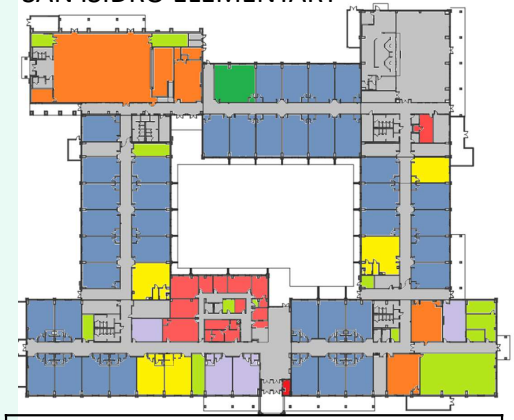
45 STANDARD CLASSROOMS AVAILABLE FOR USE					
Classrooms & Science Rm	Rotation Spaces	Small Group Learning Space	Resources & Storage	Special Program Support	Operational Capacity
37	4	4	N/A	7	810

VETERANS MEMORIAL ELEMENTARY –

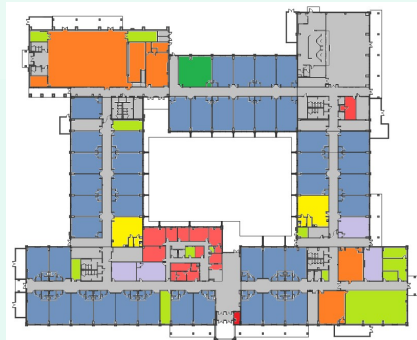


45 STANDARD CLASSROOMS AVAILABLE FOR USE					
Classrooms & Science Rm	Rotation Spaces	Small Group Learning Space	Resources & Storage	Special Program Support	Operational Capacity
39	4	3	N/A	7	810

SAN ISIDRO ELEMENTARY –



45 STANDARD CLASSROOMS AVAILABLE FOR USE					
Classrooms & Science Rm	Rotation Spaces	Small Group Learning Space	Resources & Storage	Special Program Support	Operational Capacity
40	4	4	N/A	5	830



STANDARD CAPACITY ANALYSIS FOR THE PROTOTYPE ELEMENTARY –	
45 Classrooms @ 22 to 1.....	990 Students
Minus – 1 Science Room.....	(22 Students)
Minus – 4 Intervention Classrooms.....	(88 Students)
Minus – 2 Classrooms for Flex.....	(44 Students)
Special Education Program Spaces.....	24 Students
<b>Operational Capacity.....</b>	<b>860 Students</b>

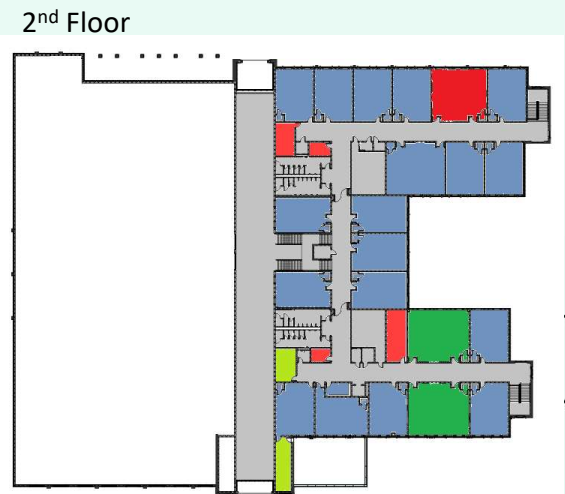
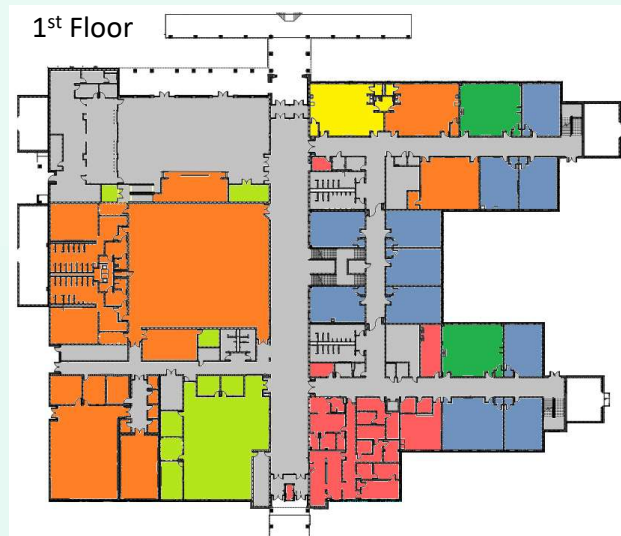
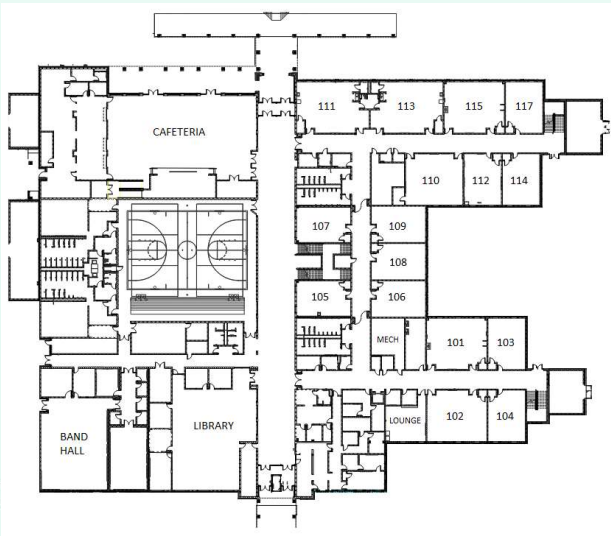
# United Independent School District – Building Capacity Study

## Raul Perales Middle School



- - STANDARD SIZE CLASSROOM SPACES
- - SMALL GROUP/INDIVIDUAL LEARNING SPACES
- - SPECIAL PROGRAM SPACES
- - FINE ART PROGRAM SPACES (ART & MUSIC) AND PHYSICAL EDUCATION SPACES
- - CAMPUS SUPPORT STAFF SPACES (ADMINISTRATIVE)
- - BASIC NEED SPACES
- - RESOURCES, STORAGE, & MEDIA SERVICE SPACES
- - SCIENCE CLASSROOM SPACES

RAUL PERALES MIDDLE SCHOOL	
Standard Classrooms	Science Classrooms
30 Classrooms	4 Science Rooms
Average Square Ft.	Average Square Ft.
720.00	1,275
28 SF per Student	41 SF per Student
25 Students	31 Students
Minus Allocation of Classrooms for Flexibility & Planning/Conference Time	Efficiency of Use (Avg. Sq. Ft./41 SF per Student X 95%) (29 Students)
5 Classrooms	
Periods in the Day	Periods in the Day
5	5
625 Students	116 Students
<b>741 STUDENT CAPACITY</b>	
Add Students attending Fine Art/Athletic Classes at (25 per class X 6 Locations) +(12 per class X 1 Special Education Classrooms) = 162 Students	
<b>903 STUDENT CAPACITY</b>	





# United Independent School District – Building Capacity by High School Feeder Pattern

United ISD Capacity Study - Capacity Summary w/ Square Footages

Campuses	Square Footage	Operational Capacity	Maximum Capacity	# of Portables	# of Available Classrooms	Portable Seats	Campus Capacity w/ Portables	2023-24 School Enrollment	Building (Operational) Utilization %	Comments/Description
<b>United High School Feeder Pattern</b>										
Borchers Elementary School	92,880	766	810	3	6	132	942	502	66%	3 Portables (6 Classrooms)
Fasken Elementary School	92,880	788	832	4	1	12	844	725	92%	4 Portables (1 Classrooms)
Finley Elementary School	70,828	622	666	0	0	0	666	484	78%	No Portables
Kazen Elementary School	67,450	448	492	2	4	88	580	364	81%	2 Portables (4 Classrooms)
Malakoff Elementary School	92,880	776	820	1	2	44	864	600	77%	1 Portable (2 Classrooms)
Muller Elementary School	90,481	752	796	5	6	114	910	809	108%	5 Portables (6 Classrooms)
San Isidro Elementary School	105,000	830	874	2	2	44	918	815	98%	2 Portables (2 Classrooms)
Elias Herrera Middle School	167,180	1,274	1,274	0	0	0	1,274	1,055	83%	No Portables
Juan Roberto Ramirez Middle School	110,050	894	894	0	0	0	894	0	0%	No Portables
Washington Middle School	92,100	1,008	1,008	10	19	380	1,388	1,093	108%	10 Portables (19 Classrooms)
UHS 9th Grade Campus	199,035	1,185	1,185	0	0	0	1,185	856	72%	No Portables
United High School	437,249	3,123	3,123	0	0	0	3,123	2,711	87%	No Portables
<b>United South High School Feeder Pattern</b>										
B. Garcia Elementary School	92,880	712	756	6	12	264	1,020	615	86%	6 Portables (12 Classrooms)
Freedom Elementary School	105,000	820	864	0	0	0	864	664	81%	No Portables
H. Cuellar Elementary School	90,481	690	734	1	1	12	746	507	73%	1 Portable (1 Classrooms)
J. Zaffirini Elementary School	90,481	764	808	8	9	188	996	603	79%	8 Portables (9 Classrooms)
Killam Elementary School	92,880	724	768	1	2	44	812	630	87%	1 Portable (2 Classrooms)
Ruiz Elementary School	77,393	774	818	4	2	36	854	733	95%	4 Portables (2 Classrooms)
Salinas Elementary School	105,000	810	854	0	0	0	854	753	93%	No Portables
Gonzalez Middle School	101,260	1,030	1,030	11	9	188	1,218	715	69%	11 Portables (9 Classrooms)
Raul Perales Middle School	110,050	903	903	0	0	0	903	642	71%	No Portables
United South Middle School	103,684	1,048	1,048	10	16	304	1,352	894	85%	10 Portables (16 Classrooms)
USHS 9th Grade Campus	199,035	1,172	1,172	0	0	0	1,172	854	73%	No Portables
United South High School	340,160	2,689	2,689	10	1	20	2,709	2,399	89%	10 Portables (1 Classrooms)

 - Building Utilization Exceeding 90%

 - Building Utilization Below 60%



# United Independent School District – Building Capacity by High School Feeder Pattern

United ISD Capacity Study - Capacity Summary w/ Square Footages

Campuses	Square Footage	Operational Capacity	Maximum Capacity	# of Portables	# of Available Classrooms	Portable Seats	Campus Capacity w/ Portables	2023-24 School Enrollment	Building (Operational) Utilization %	Comments/Description
<b>Alexander High School Feeder Pattern</b>										
Clark Elementary School	73,000	646	690	0	0	0	690	384	59%	No Portables
Colonel Santos Benavides Elementary School	92,880	796	840	5	7	154	994	828	104%	5 Portables (7 Classrooms)
Gutierrez Elementary School	76,460	626	648	1	0	0	648	407	65%	1 Portable (0 Classroom)
M. De Llano Elementary School	66,813	478	522	5	5	90	612	437	91%	5 Portables (5 Classrooms)
Newman Elementary School	68,940	688	776	3	6	132	908	383	56%	3 Portables (6 Classrooms)
Nye Elementary School	104,376	776	820	0	0	0	820	692	89%	No Portables
Roberto Santos Elementary School	105,000	798	886	0	0	0	886	564	71%	No Portables
Trautmann Elementary School	107,955	910	954	0	0	0	954	679	75%	No Portables
Clark Middle School	105,078	1,106	1,106	0	0	0	1,106	576	52%	No Portables
Trautmann Middle School	92,100	1,023	1,023	7	14	280	1,303	744	73%	7 Portables (14 Classrooms)
United Middle School - 6th Grade Center	66,300	736	736	0	0	0	736	314	43%	No Portables
United Middle School	108,488	875	875	1	1	20	895	685	78%	1 Portable (1 Classroom)
AHS 9th Grade Campus	199,035	1,197	1,197	0	0	0	1,197	848	71%	No Portables
Alexander High School	332,128	2,442	2,442	6	3	60	2,502	2,330	95%	6 Portables (3 Classrooms)
<b>LBJ High School Feeder Pattern</b>										
Arndt Elementary School	113,080	1,018	1,062	0	0	0	1,062	792	78%	No Portables
Centeno Elementary School	92,880	818	862	3	6	122	984	801	98%	3 Portables (6 Classrooms)
Juarez - Lincoln Elementary School	74,500	700	744	6	3	46	790	579	83%	6 Portables (3 Classrooms)
Kennedy-Zapata Elementary School	68,348	490	534	1	0	0	534	340	69%	1 Portable (0 Classrooms)
Perez Elementary School	72,253	712	778	2	0	0	778	597	84%	2 Portables (0 Classrooms)
Prada Elementary School	84,184	820	864	0	0	0	864	743	91%	No Portables
Roosevelt Elementary School	79,961	722	766	0	0	0	766	646	89%	No Portables
Veterans Memorial Elementary School	105,000	810	854	2	0	0	854	807	100%	2 Portables (0 Classrooms)
L. Bruni Vergara Middle School	97,117	949	949	7	8	160	1,109	717	76%	7 Portables (8 Classrooms)
Los Obispos Middle School	92,100	1,044	1,044	5	10	200	1,244	658	63%	5 Portables (10 Classrooms)
Ricardo Molina Middle School	110,050	894	894	0	0	0	894	769	86%	No Portables
S. Garcia Middle School	92,100	1,081	1,081	0	0	0	1,081	344	32%	No Portables
LBJ 9th Grade Campus	199,035	1,197	1,197	0	0	0	1,197	907	76%	No Portables
LBJ High School	329,552	2,387	2,387	12	17	340	2,727	2,364	99%	12 Portables(17 Classrooms)

- Building Utilization Exceeding 90%

- Building Utilization Below 60%

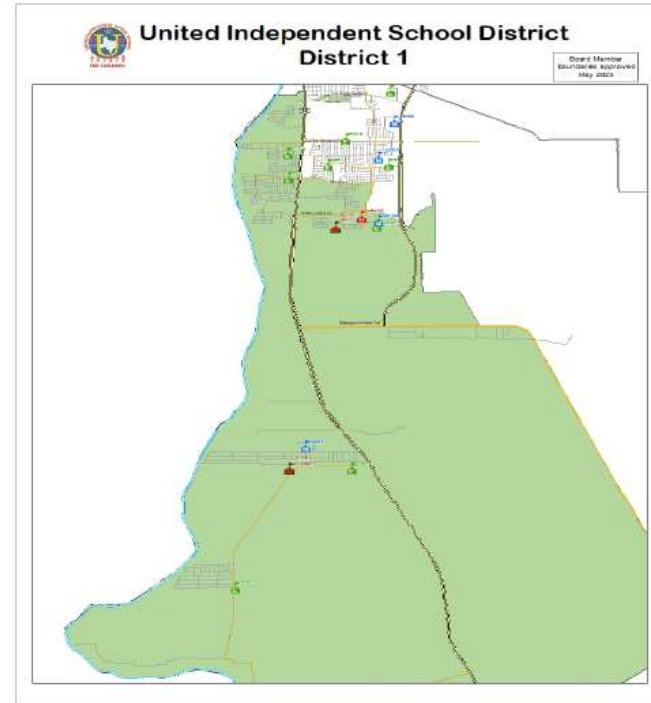


**Gilbert Aguilar, Jr.**  
District 1 - Member



Home: 507 Rio Tamesis  
Rio Bravo, TX 78046  
Mobile: (956) 740-4390  
Email: [gaguilar jr@uisd.net](mailto:gaguilar jr@uisd.net)

Mr. Aguilar proudly served his community as the Mayor of Rio Bravo for three years, and prior to that worked in the oil fields, and as an educator. Mr. Aguilar has a strong passion for education and the success of students, and is eager to bring his expertise to the Board of Trustees to help make a positive impact on United ISD. As mayor, Mr. Aguilar brought a lot of services to the city of Rio Bravo. He will now work hand-in-hand with the District and his community to maintain school safety and support UISD students, parents, and staff for a better tomorrow! Mr. Aguilar has resigned his office as Rio Bravo Mayor and vacated that office in order to serve as Trustee for District 1. United ISD and Superintendent David H. Gonzalez are thrilled to welcome Mr. Aguilar to the Board and look forward to working with Mr. Aguilar and his colleagues on the Board of Trustees to continue United ISD's legacy of excellence in education.



**Schools Located within District 1 Boundary :**

Amdt Elementary	Lamar Bruni Middle	LBJ High School
Prada Elementary	Salvador Garcia Middle	STEP Academy*
Juarez-Lincoln Elementary		
Kennedy Zapata Elementary		
Veterans M. Elementary		

**School Boundary Represented by District 1 and shared with other Board Members:**

Juarez - L Elementary	Ramiro Veliz *	
Kennedy Zapata Elementary	Ramiro Veliz *	
Veterans M. Elementary	Ricardo Rodriguez *	Ramiro Veliz *
Perez Elementary	Ramiro Veliz	
Centeno Elementary	Ramiro Veliz	
Lamar Bruni Middle	Ricardo Rodriguez *	Ramiro Veliz
Salvador Garcia Middle	Ramiro Veliz	
R. Molina Middle	Ramiro Veliz	
LBJ High School	Ramiro Veliz	Ricardo Rodriguez *

**District 1- Campus Counts**

Elem	Middle	High	Total
5	2	1	8

**District 1 - Total Boundary Student Enrollment 2023-24 by Grade**

EC	PK	K	1ST	2ND	3RD	4TH	5TH	6TH	7TH	8TH	9TH	10TH	11TH	12TH	Elementary School Total	Middle School Total	High School Total	TOTAL
43	320	418	530	520	492	495	520	485	521	510	586	562	430	475	3,338	1,516	2,053	6,907

**District 1 - Boundary Land Data**

Parcels	Multi Family Units	Homes Under Construction	Vacant Developed Lots	Future Lots
8,888	588		36	414

**District 1 - Student Yield Factors**

Elem	Middle	High	Total
0.38	0.17	0.23	0.78

\* Represents an undeveloped part of the boundary. Updated on February, 2023.



**Ricardo Rodriguez**  
District 2 - Member



Home: 3308 Simmental Drive  
Laredo, TX 78046  
Phone: (956) 401-4310  
Email: [rrodriguez@uisd.net](mailto:rrodriguez@uisd.net)

**Schools Located within District 2 Boundary :**

- Bonnie G Elementary
- Killam Elementary
- Freedom Elementary
- Zaffirini Elementary
- Antonio G. Middle
- R. Perales Middle

Ricardo "Rick" Rodriguez was born and raised in Laredo Texas. He is a class of 1978 Nixon Graduate. After graduation, Rodriguez attended Laredo Junior College, and at the age of 17, became a detention officer under the supervision of Sheriff Mario Santos. It was during this time that Rodriguez became actively involved in a variety of programs like the PAL, DARE, SWAT teams and bike patrol. Rodriguez' hard work and dedication to excellence led to a major promotion as that of an Assistant Chief Administrator. The appointment placed him third in command under Sheriff Juan Garza.

Rodriguez was elected to the district two seat in November 2008. In 2010 he was appointed as Constable for Pct. 2 by the Webb County Commissioners Court. Upon his appointment, Rodriguez upgraded the office by fostering open door and transparency policies. During his first two years in office, Rodriguez obtained a Stone Garden Grant. This enabled him to purchase new vehicles and safety equipment to protect officers and better serve the community. He is also credited with implementing several programs such as McGruff and Explorers, and assigning safety patrols to manage morning and after school traffic in both of Laredo's public school districts. He has also volunteered traffic control services for churches and special events and served the City of Rio Bravo as an Associate Judge.

Rodriguez serves the needs of parents and students attending United South H.S., Gonzalez M.S., United South M.S., Bonnie Garcia Elementary, Killam Elementary, Ruiz Elementary, Salinas Elementary, and Zaffirini Elementary. In 2011, the UISD Board of Trustees voted for Rodriguez to become Secretary of the Board. He is currently employed by Laredo Independent School District.

Rodriguez is proud of his two sons. His eldest, Ricardo Evan Rodriguez, serves the City of Laredo Police Department as Traffic Officer, and his younger son, the late Rolando Ernesto Rodriguez. He is married to Geovanna "Gigi" Rodriguez and they have one daughter, Regina Eliana Rodriguez.

**School Boundary Represented by District 2 and shared with other Board Members:**

Freedom Elementary	Aliza Flores Oliveros		
Zaffirini Elementary	Aliza Flores Oliveros *		
Cuellar Elementary	Aliza Flores Oliveros		
R Santos Elementary	Aliza Flores Oliveros	Frank Castillo	
Roosevelt Elementary	Ramiro Veliz *		
Ruiz Elementary	Ramiro Veliz		
Veterans Elementary	Gilbert Aguilar *	Ramiro Veliz	
Antonio G Middle	Aliza Flores Oliveros		
R Perales Middle	Aliza Flores Oliveros	Ramiro Veliz *	
Clark Middle	Aliza Flores Oliveros	Javier Montemayor	Michelle Molina
Unites South Middle	Ramiro Veliz		
Los Obispos Middle	Ramiro Veliz *		
Lamar B V Middle	Gilbert Aguilar *	Ramiro Veliz	
Alexander High	Aliza Flores Oliveros	Javier Montemayor	Michelle Molina
United South High	Aliza Flores Oliveros	Ramiro Veliz	
LBJ High	Gilbert Aguilar	Ramiro Veliz	

**District 2 - Total Boundary Student Enrollment 2023-24 by Grade**

EC	PK	K	1ST	2ND	3RD	4TH	5TH	6TH	7TH	8TH	9TH	10TH	11TH	12TH	Elementary School	Middle School	High School	TOTAL
42	222	378	424	460	388	378	403	450	445	445	503	474	469	452	2,695	1,340	1,898	5,933

**District 2 - Boundary Land Data**

Parcels	Multi Family Units	Homes Under Construction	Vacant Developed Lots	Future Lots
10,569	716	87	404	449



**District 2 - Campus Counts**

Elem	Middle	High	Total
4	2	0	6

Frank Castillo

**District 2 - Student Yield Factors**

Elem	Middle	High	Total
0.25	0.13	0.18	0.56



**Aliza Flores Oliveros**  
District 3 - Vice-President

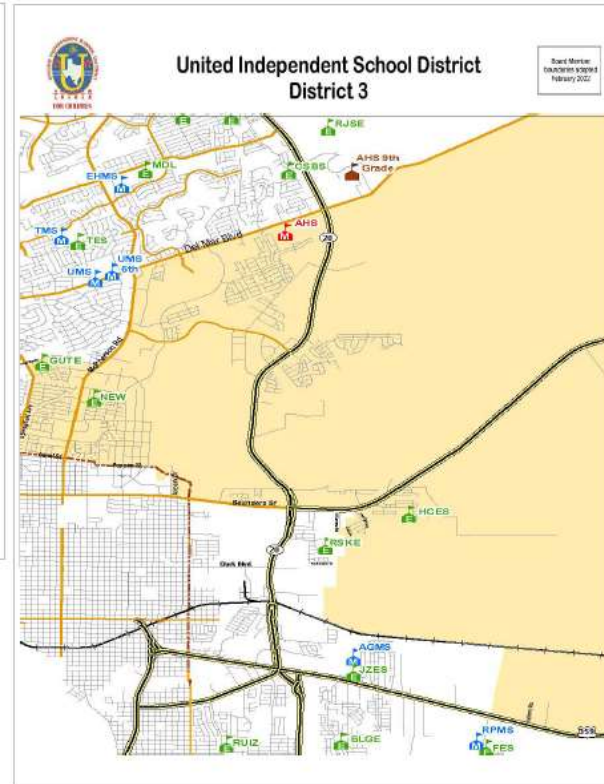


Home: 6620 Grande Bay  
Laredo, TX 78041  
Mobile: (956) 286-2473  
Email: [alizaflores@uisd.net](mailto:alizaflores@uisd.net)

**Schools Located within District 3 Boundary :**

- Newman Elementary
- Cuellar Elementary
- Gutierrez Elementary
- Alexander High School

Mrs. Aliza Flores Oliveros represents District 3. Mrs. Oliveros graduated from Texas A&M University in College Station with her Bachelor of Science degree in Biomedical Science. She has a Master of Arts degree in Counseling Psychology and from Texas A&M International University. She is a Licensed Professional Counselor and a Licensed Baccalaureate Social Worker. As a young college student, Mrs. Oliveros was employed by Laredo Community College as a Math Tutor. While at Texas A&M University, she served as a Resident Advisor and was an active member of the Biomedical Science Association. She is currently, the Executive Director of the Webb County Head Start/Early Head Start program, where she oversees all program content areas that include: Administration, Curriculum and Instruction, Parent Involvement, Program Governance, Social Services, Mental Health and Disability Services, Nutrition Services, Transportation, Fiscal Oversight, Grant Writing, Grant Compliance, and LISD/UISD Partnerships. Prior to her current position, she served as an Instructional Coordinator for the Adult Education Department at Laredo Community College and as a Counselor for the Student Support Services Department. Mrs. Oliveros is a former adjunct instructor at Texas A&M International University and Laredo Community College. She is a former advisory board member of Child Care Management Services, AVANCE, Community Action Agency, and Children's Coalition of Webb County. She has also served on the Board of Directors for the Texas Head Start Association as the South Texas Director's Alternate and is an active member of the South-by-Southwest Head Start Directors Association. Aliza, along with her family, is an active member of St. John Neumann Catholic Church and serves as an Extraordinary Minister of the Holy Eucharist. Aliza Flores Oliveros is the daughter of the late Daniel Flores, Jr. and Lyndal Flores. She is married to Victor Manuel Oliveros, Jr. Together, they have three children: Alexandra, Victor, III, and Nicholas. Mrs. Oliveros looks forward to working with school officials, parents and students of United I.S.D.



**School Boundary Represented by District 3 and shared with other Board Members:**

Cuellar Elementary	Ricardo Rodriguez			
Gutierrez Elementary	Javier Montemayor			
Col Santos Elementary	Javier Montemayor	Frank Castillo		
Clark Elementary	Javier Montemayor	Michelle Molina		
Freedom Elementary	Ricardo Rodriguez			
Nye Elementary	Javier Montemayor	Michelle Molina		
San Isidro Elementary	Michelle Molina *	Frank Castillo		
R Santos Elementary	Ricardo Rodriguez	Frank Castillo *		
Zaffirini Elementary	Ricardo Rodriguez *			
Antonio G Middle	Ricardo Rodriguez			
Clark Middle	Ricardo Rodriguez	Javier Montemayor	Michelle Molina	
E Herrera Middle	Michelle Molina *	Frank Castillo		
R Perales Middle	Ricardo Rodriguez	Ramiro Veliz *		
United Middle	Javier Montemayor	Frank Castillo		
Alexander High	Ricardo Rodriguez	Javier Montemayor	Michelle Molina	Frank Castillo
United High	Michelle Molina	Frank Castillo *		
United South High	Ricardo Rodriguez	Ramiro Veliz		

**District 3 - Campus Counts**

Elem	Middle	High	Total
3	0	1	4

**District 3 - Total Boundary Student Enrollment 2023-24 by Grade**

EC	PK	K	1ST	2ND	3RD	4TH	5TH	6TH	7TH	8TH	9TH	10TH	11TH	12TH	Elementary School	Middle School	High School	TOTAL
32	194	319	379	366	360	362	394	375	389	387	430	422	392	430	2,406	1,151	1,674	5,231

**District 3 - Boundary Land Data**

Parcels	Multi Family Units	Homes Under Construction	Vacant Developed Lots	Future Lots
10,624	1,556	35	44	541

**District 3 - Student Yield Factors**

Elem	Middle	High	Total
0.23	0.11	0.16	0.49



**Ramiro Veliz, III**  
District 4 - President



Home: 4419 Exodus Dr.  
Laredo, TX 78046  
Mobile: (956) 508-7597  
Email: [rveliz@uisd.net](mailto:rveliz@uisd.net)

**Schools Located within District 4 Boundary :**

- Salinas Elementary
- Centeno Elementary
- Perez Elementary
- Roosevelt Elementary
- Ruiz Elementary
- Los Obispos Middle
- R. Molina Middle
- United South High
- United South Middle

**School Boundary Represented by District 4 and shared with other Board Members:**

- Centeno Elementary
- Perez Elementary
- Roosevelt Elementary
- Ruiz Elementary
- Juarez - L Elementary
- Kennedy Z. Elementary
- Veterans Elementary
- Los Obispos Middle
- R. Molina Middle
- United South Middle
- Lamar Bruni V Middle
- R Perales Middle
- Salvador Garcia Middle
- United South High
- LBJ High
- Gilbert Aguilar
- Gilbert Aguilar
- Ricardo Rodriguez \*
- Ricardo Rodriguez
- Gilbert Aguilar \*
- Gilbert Aguilar \*
- Gilbert Aguilar
- Ricardo Rodriguez \*
- Gilbert Aguilar
- Ricardo Rodriguez
- Ricardo Rodriguez \*
- Gilbert Aguilar
- Ricardo Rodriguez
- Aliza Flores Oliveros
- Gilbert Aguilar \*
- Ricardo Rodriguez
- Aliza Flores Oliveros
- Ricardo Rodriguez \*

Ramiro Veliz, III is the President of the United I.S.D. Board of Trustees. Ramiro Veliz, III was elected to District IV on November 6, 2012. He was born and raised in Laredo, Texas and is the son of the Honorable Judge Ramiro Veliz, Jr., and Amelia Veliz. He has a twin brother, Jorge, who is a Peace Officer at the Webb County Constable's Office Precinct #2 and he also has a younger brother, Eddy, who is the Finance Manager at a local auto dealership. Mr. Veliz attended H.B. Zachary Elementary School, Cigarroa Middle School, and graduated in 2000 from Cigarroa High School. He attended Laredo Community College and obtained an Associate's Degree in Criminal Justice in 2010. He also attended South Texas Regional Police Academy at Laredo Community College and completed studies with Top of the Class honors obtaining state certification as a Peace Officer. Mr. Veliz plans to continue his studies towards a Bachelor's Degree in Criminal Justice by enrolling at Texas A&M International University in the near future. He has been married for 12 years to Aide Veliz and they have four children; Ramiro IV, Gabriela, Adriana, and Adrian. His oldest children attend local area schools. His wife is an elementary teacher at L.I.S.D. Mr. Veliz has been a resident of District IV for over eight years and decided to run for the UISD Board for several reasons. "I believe change was already needed and many people had voiced their support for my intention to run. I plan on working very closely with my fellow Board Members, with District Administrators, School Administrators, all U.I.S.D. employees, and with the parents of the children", Veliz stated. "I will have an open mind in facing the various issues present at U.I.S.D. and will dedicate myself towards continuing the success of the District", he added.



**District 4 - Campus Counts**

Elem	Middle	High	Total
5	3	1	9

**District 4 - Total Boundary Student Enrollment 2023-24 by Grade**

EC	PK	K	1ST	2ND	3RD	4TH	5TH	6TH	7TH	8TH	9TH	10TH	11TH	12TH	Elementary School	Middle School	High School	TOTAL
49	267	387	483	434	453	476	456	528	545	531	584	572	476	531	3,005	1,604	2,163	6,772

**District 4 - Boundary Land Data**

Parcels	Multi Family Units	Homes Under Construction	Vacant Developed Lots	Future Lots
8,349	128	28	67	352

**District 4 - Student Yield Factors**

Elem	Middle	High	Total
0.36	0.19	0.26	0.81



**Javier Montemayor, Jr.  
District 5 - Member**



Home: 419 Martens  
Laredo, TX 78041  
Mobile: (956) 220-3040  
Fax: (956) 726-8815  
Work Office: (956)726-8811  
Email: [jm.uisd@gmail.com](mailto:jm.uisd@gmail.com)

**Schools Located within District 5 Boundary :**

- Clark Elementary
- Nye Elementary
- Trautmann Elementary
- Clark Middle
- Trautmann Middle
- United Middle

**School Boundary Represented by District 5 and shared with other Board Members:**

Clark Elementary	Aliza Flores Oliveros	Michelle Molina		
Nye Elementary	Aliza Flores Oliveros	Michelle Molina		
Trautmann Elementary	Frank Castillo			
Col Santos Elementary	Aliza Flores Oliveros	Frank Castillo		
Borchers Elementary	Frank Castillo			
Matias D Llano Elem	Frank Castillo			
Gutierrez Elementary	Aliza Flores Oliveros			
Clark Middle	Ricardo Rodriguez	Aliza Flores	Michelle Molina	
Trautmann Middle	Michelle Molina	Frank Castillo		
United Middle	Aliza Flores Oliveros	Frank Castillo		
Alexander High	Ricardo Rodriguez	Aliza Flores	Michelle Molina	Frank Castillo

**District 5 - Total Boundary Student Enrollment 2023-24 by Grade**

EC	PK	K	1ST	2ND	3RD	4TH	5TH	6TH	7TH	8TH	9TH	10TH	11TH	12TH	Elementary School	Middle School	High School	TOTAL
33	109	227	245	293	237	289	310	331	324	305	410	380	362	366	1,743	960	1,518	4,221

**District 5 - Boundary Land Data**

Parcels	Multi Family Units	Homes Under Construction	Vacant Developed Lots	Future Lots
8,374	800	2	25	0

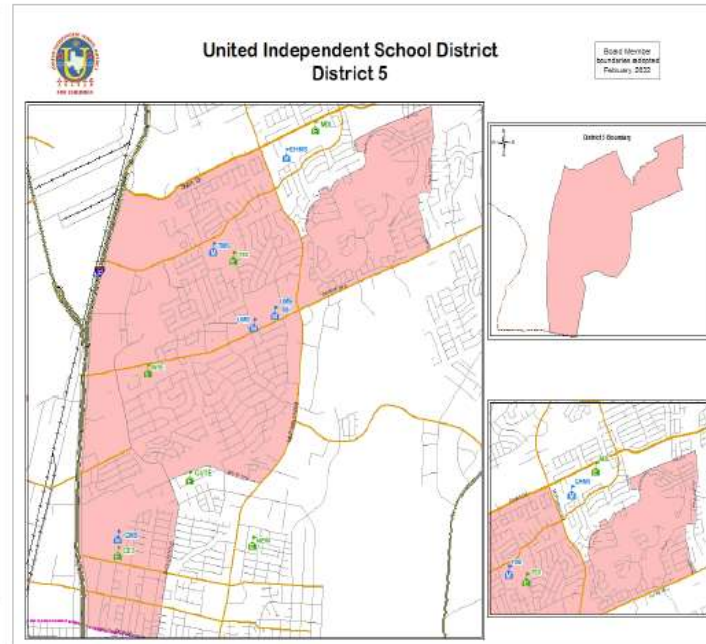
**District 5 - Campus Counts**

Elem	Middle	High	Total
3	3	0	6

**District 5 - Student Yield Factors**

Elem	Middle	High	Total
0.21	0.11	0.18	0.50

Elected to the United I.S.D. Board of Trustees in November 2010, Mr. Javier Montemayor, Jr. is the Board representative for District 5. A practicing attorney since 1997, Mr. Montemayor earned his law degree from Texas Southern University and his bachelor's degree in Political Science from Southwest Texas State University. Currently, Mr. Montemayor maintains a private law practice. His previous work experience includes working as an Assistant District Attorney for Webb and Zapata Counties and as an Associate Attorney for the Law Office of David D. Garcia in Laredo. Before practicing law, Mr. Montemayor worked with the City of Laredo as a Compliance Officer in the Community Development Department and with the South Texas Development Council. Mr. Montemayor is an active member of the community. He has served as chairman of the Webb County Democratic Party and was a member of the Ad Hoc Ethics Advisory Committee with the City of Laredo. His many professional organizations include the State Bar of Texas and Webb County Bar Association. Mr. Montemayor is also affiliated with the Texas Association of Sports Officials, the Boy's and Girl's Club of Laredo, Border Olympics, Leadership Laredo, and the Laredo Center for the Arts, among others. He is the proud son of the late Javier Sr. and Catalina Montemayor. His father was a Lieutenant Colonel in the U.S. Army, a local educator, and a well-known attorney. His mother was an educator for many years and retired from United I.S.D. Mr. Montemayor has one daughter, Alexandra Isabel Montemayor.





**Michelle Molina**  
District 6 - Secretary



1917 Port Edward Drive  
Laredo, TX 78045  
Mobile: (956) 441-4586  
Email: [michelle.molina@uisd.net](mailto:michelle.molina@uisd.net)

**Schools Located within District 6 Boundary :**

- Fasken Elementary
- Finley Elementary
- Kazen Elementary
- Muller Elementary
- Washington Middle
- J Roberto Ramirez Middle

**School Boundary Represented by District 6 and shared with other Board Members:**

Clark Elementary	Aliza Flores Oliveros	Javier Montemayor	
Nye Elementary	Aliza Flores Oliveros	Javier Montemayor	
San Isidro Elementary	Aliza Flores Oliveros *	Frank Castillo	
Clark Middle	Ricardo Rodriguez	Aliza Flores	Javier Montemayor
E Herrera Middle	Aliza Flores Oliveros *	Frank Castillo	
Trautmann Middle	Javier Montemayor	Frank Castillo	
Alexander High	Ricardo Rodriguez	Aliza Flores	Javier Montemayor
United High School	Aliza Flores Oliveros *	Frank Castillo	Frank Castillo

**District 6 - Total Boundary Student Enrollment 2023-24 by Grade**

EC	PK	K	1ST	2ND	3RD	4TH	5TH	6TH	7TH	8TH	9TH	10TH	11TH	12TH	Elementary School	Middle School	High School	TOTAL
40	237	330	384	365	367	384	423	396	422	410	451	488	501	487	2,530	1,228	1,927	5,685

**District 6 - Boundary Land Data**

Parcels	Multi Family Units	Homes Under Construction	Vacant Developed Lots	Future Lots
11,500	936	5	65	355

**District 6 - Campus Counts**

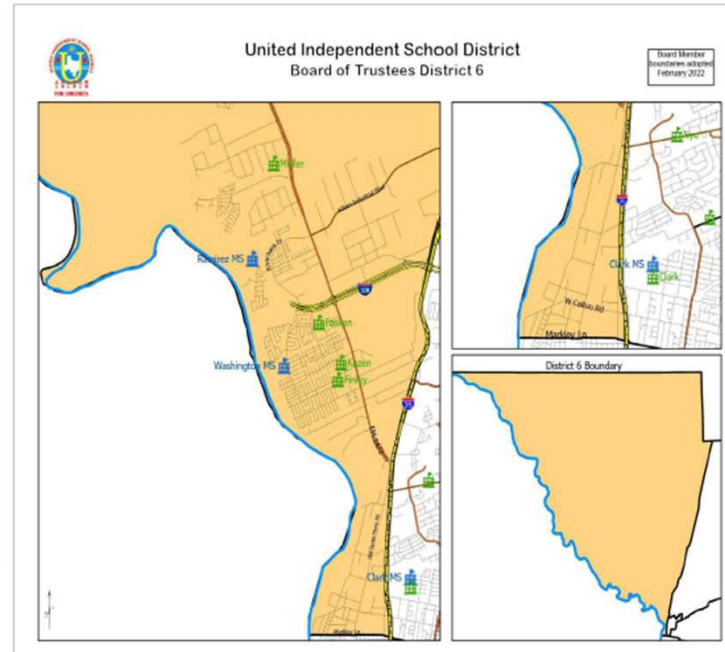
Elem	Middle	High	Total
4	2	0	6

**District 6 - Student Yield Factors**

Elem	Middle	High	Total
0.22	0.11	0.17	0.49

Michelle Molina has 12 years of experience in Mid-Stream Energy as the Senior Vice President of Business Development for Fuel Me. She is married to Armando Molina, principal of an LISD middle school, with more than 20 years of experience in education. She is the mother of three United ISD Mueller Elementary students, age 10 Amanda Rae, Age 6 Zoe Sky, and Age 5 Xander Fox. Mrs. Molina is an autism mom and advocates for all students with special needs. She is a Black Belt in Karate and provides instruction in martial arts at the Molina Institute of Martial Arts. She became a member of the United ISD School Board to bring positive change and to raise the expectations of accountability.

"I want to have an open line of communication with community members, parents, and employees of the district. I want to be able to advocate for the best interest of all United ISD. I want to allocate resources strategically and provide systemic sustainable change. My top priorities include school safety and mental health awareness to all stakeholders, academic progress to be able to close learning gaps, transparency, and integrity to always do what is right, financial stability to ensure accountability of district expenditures and resources, financial stability to ensure accountability of district expenditures and resources, and provide systemic sustainable change, management of day to day operations."



District Member boundaries adopted February 2022

\* Represents an undeveloped part of the boundary. Updated on February, 2023.





**Francisco Castillo**  
District 7 - Member



Home: 1013 Topaz Trail  
Laredo, TX 78045  
Mobile: (956) 251-7109  
Email: [fcastillo@uisd.net](mailto:fcastillo@uisd.net)

**Schools Located within District 7 Boundary :**

- Malakoff Elementary
- Borchers Elementary
- De Llano Elementary
- San Isidro Elementary
- Col Santos Elementary
- R. Santos Elementary

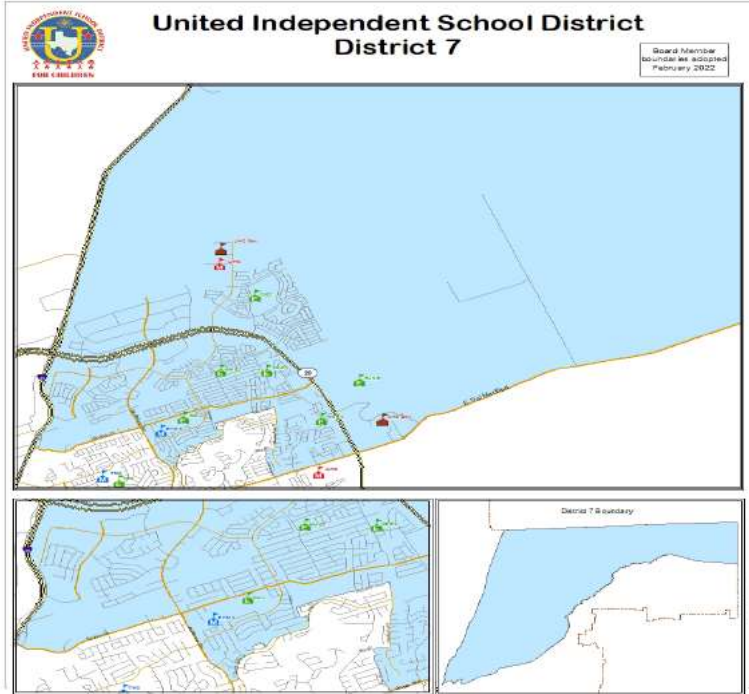
Francisco "Frank" Castillo was elected to serve on the Board of Trustees in November 2020 and is the representative for District 7.

Mr. Castillo holds a Bachelor of Arts degree in Political Science and a Master of Public Administration from Texas A & M International University.

Mr. Castillo has worked as an Adjunct Professor of Political Science at TAMU, the City of Laredo Airport Manager, a Mental Health Care Caseworker, a Texas Department of Criminal Justice Parole Officer, and Community Information Officer. Mr. Castillo retired as a certified Juvenile Probation Officer in 2022. Mr. Castillo is a Webb County Appraisal District member representing United ISD. Mr. Castillo has worked as a substitute and volunteer. He is an active member of the Texas State Employees Union, Pi Sigma Alpha (Political Science Honor Society), Sigma Alpha Pi (National Honor Society for Leadership & Success).

Mr. Castillo was born and raised in Laredo, TX, and attended Laredo Public schools. His daughter attended United ISD schools and his wife is a retired educator of United ISD. Mr. Castillo is eager to serve as the Board Member for District 7. Having seen first hand the issues United ISD stakeholders face, he is committed to ensuring that the District and its programs operate efficiently and effectively.

- E Herrera Middle
- Alexander High School ( 9th grade campus only )
- United High School



**School Boundary** Represented by District 7 and shared with other Board Members:

Borchers Elementary	Javier Montemayor		
De Llano Elementary	Javier Montemayor		
San Isidro Elementary	Aliza Flores Oliveros *	Michelle Molina	
Col Santos Benavides	Aliza Flores Oliveros	Javier Montemayor	
R Santos Elementary	Ricardo Rodriguez	Aliza Flores Oliveros	
Trautmann Elementary	Javier Montemayor		
E Herrera Middle	Aliza Flores Oliveros *	Michelle Molina	
Trautmann Middle	Javier Montemayor	Michelle Molina	
United Middle	Aliza Flores Oliveros	Javier Montemayor	
Alexander High	Ricardo Rodriguez	Aliza Flores	Javier Montemayor
United High School	Aliza Flores Oliveros *	Michelle Molina	

**District 7 - Campus Counts**

Elem	Middle	High	Total
6	1	1	8

Michelle Molina

**District 7 - Total Boundary Student Enrollment 2023-24 by Grade**

EC	PK	K	1ST	2ND	3RD	4TH	5TH	6TH	7TH	8TH	9TH	10TH	11TH	12TH	Elementary School	Middle School	High School	TOTAL
27	171	348	376	394	415	443	448	444	468	460	517	529	471	523	2,622	1,372	2,040	6,034

**District 7 - Boundary Land Data**

Parcels	Multi Family Units	Homes Under Construction	Vacant Developed Lots	Future Lots
11,733	1,096	81	326	2,156

**District 7 - Student Yield Factors**

Elem	Middle	High	Total
0.22	0.12	0.17	0.51



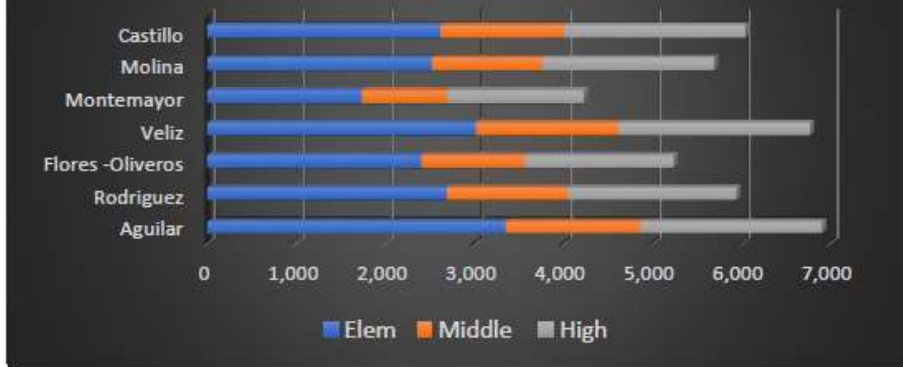
**Board Member Boundary Campus Count**



**PARCELS & MULTI-FAMILIES BY BOARD MEMBER**



**Student Enrollment 23-24  
Board Member Boundary**



by

**Total UISD 23-24 Student Enrollment  
by Board Member**

