



# **K-5 ELA Adoption Recommendation:**

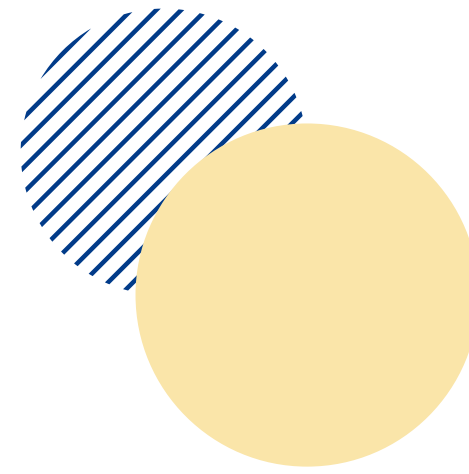
**K-4 - CKLA Amplify (3<sup>rd</sup> Edition)  
5<sup>th</sup> Grade - Open Court McGraw-  
Hill**

Dr. Worland

Adoption Team



# A RESEARCHED-BASED FOUNDATION



## ➤ State Alignment

All reviewed resources are IDOE-approved and align with Indiana literacy standards.

## ➤ The “Why”

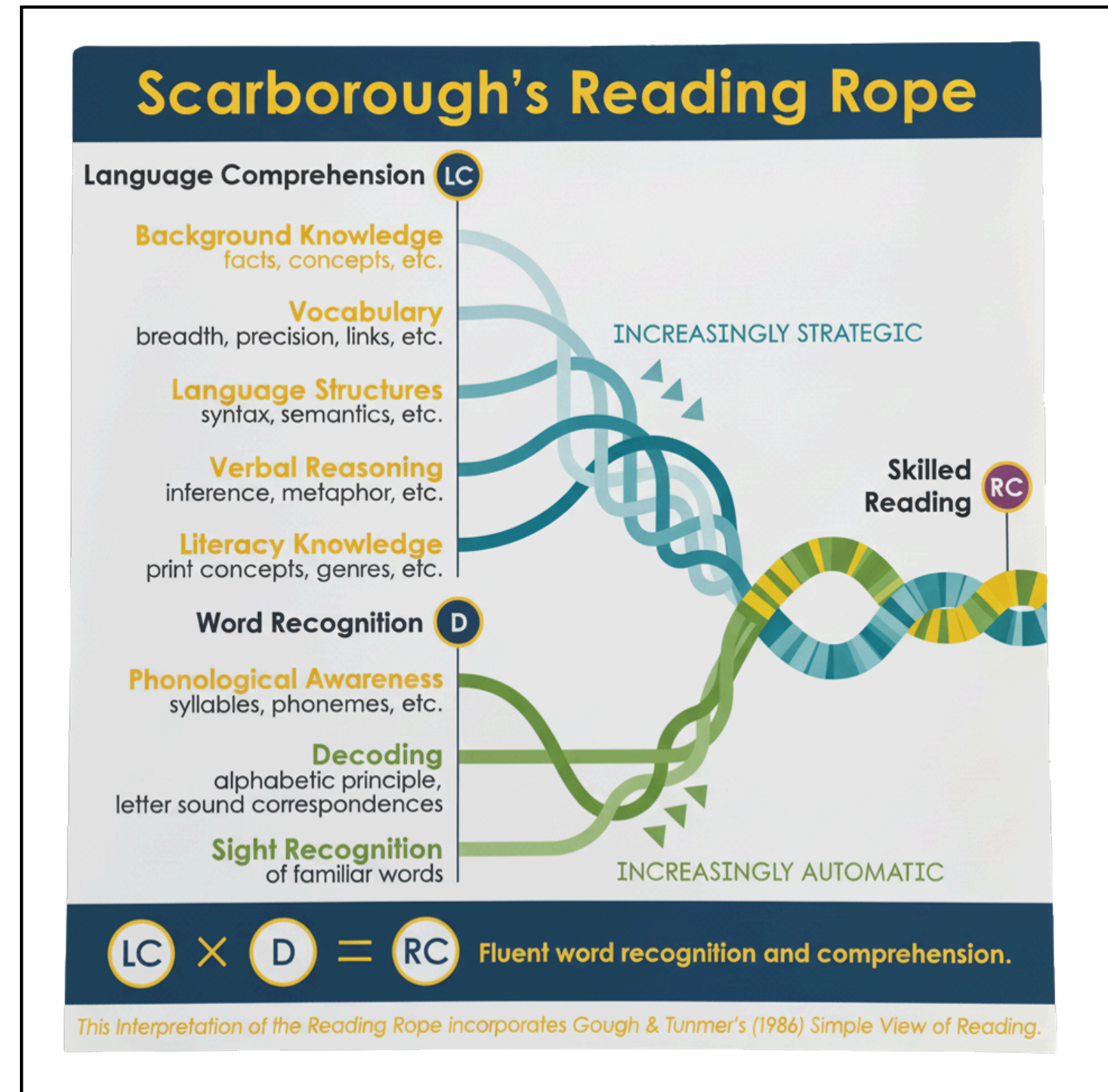
CKLA specifically addresses the Language Comprehension half of the rope (Background Knowledge, Vocabulary, and Language Structures) where our current gaps exist.

## ➤ Science of Reading (SoR)

Our selection process was rooted in the Scarborough’s Reading Rope model.

## ➤ Consistency

We are retaining our Orton-Gillingham (OG) phonics program to maintain our strong “Word Recognition” (Skills) foundation.



# OUR SYSTEMATIC SELECTION PROCESS

We followed a rigorous 8-meeting “Scope of Work” to ensure transparency and collaboration:

## ➤ Phase 1: Analysis (Jan)

Conducted a SWOT analysis of our current state, administered surveys, reviewed data, and identified gaps in writing and background knowledge.

## ➤ Phase 2: Rubric Development (Feb)

Created a custom 12-criteria rubric focusing on instructional quality and SoR alignment.

## ➤ Phase 3: Evaluation (Feb-Mar)

Hosted three deep-dive vendor presentations, two parent review nights, and K-4 PLCs from every elementary building.

## ➤ Phase 4: Decision (Mar)

Final group ranking and vote based on 80 rubric evaluations.



# VOTING RESULTS

---

The committee reached clear consensus during the March 23<sup>rd</sup> voting session:

- **Amplify CKLA:**  
77.8% of the total vote (21 votes)
- **McGraw-Hill Wonders**  
18.5% (5 votes)
- **McGraw-Hill Open Court**  
3.7% (1 vote)
- **McGraw-Hill Open Court - 5<sup>th</sup> Grade (6 member team)**  
100% (2/2 vote)



# WHY CKLA?

---

Teachers and experts we contacted highlighted several key strengths of the Amplify program:

## ➤ **Thematic Depth**

Twenty-three reviewers gave “High Quality” rankings for the “Knowledge-Centric” units that build mental models through science and social studies themes.

## ➤ **Integrated Writing**

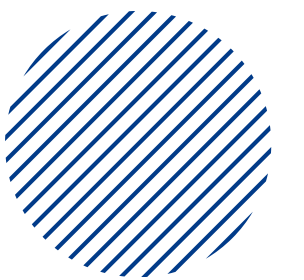
Highly praised for connecting writing tasks directly to the texts students read.

## ➤ **Vocabulary Integration**

Systematic focus on academic vocabulary and morphology.

## ➤ **Cohesion**

Described by staff as an “all-encompassing” curriculum that flows logically.



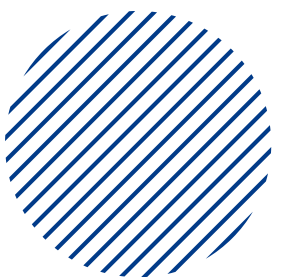


# WHY OPEN COURT?

---

Teachers focused on these key strengths:

- **Inquiry-Based Learning**  
“Reading and Responding” framework that uses inquiry and research to explore cross-curricular themes in science and social studies.
- **Integrated Writing**  
Highly praised for connecting writing tasks directly to the texts students read.
- **Vocabulary Integration**  
Systematic focus on academic vocabulary and morphology.
- **Cohesion**  
Described by staff as an “all-encompassing” curriculum that flows logically.



# NEXT STEPS & IMPLEMENTATION

---

## ➤ April 23

CKLA representative returns to FCS for a targeted Staff Q&A session.

## ➤ May

Committee celebration of the new adoptions

## ➤ April/May/June/July

Launch of comprehensive Professional Development to support teachers with pacing and preparation

## ➤ Fall 2026

Full implementation in K-5 classrooms

