



ALEDO ISD BOARD MEETING TEMPLATE

MEETING DATE: February 18, 2013

AGENDA ITEM: Report on High School Vestibule Design and ALC Additions

PRESENTER: Earl Husfeld

ALIGNS TO BOARD PRIORITY(S): Financial/Facilities - The District shall exhibit excellence in financial and facility planning, management, and stewardship.

BACKGROUND INFORMATION:

- At the December and January board meetings, the Board was presented with reports regarding the need to redesign the vestibule entrance to Aledo High School (AHS) for security improvement purposes, as well as the need to expand the size of the Aledo ISD Learning Center (Learning Center) for future growth.
- The Learning Center houses two programs: one is our dropout prevention and recovery program and the other is our state mandated Discipline Alternative Education Program, which houses students who have been removed from the regular school environment for disciplinary purposes.
- The redesign of the front entrance vestibule at AHS will direct the main entrance traffic in a more secure manner. This type of entrance remodel will resemble the design we have at the main entrance to the Daniel Ninth Grade Campus and will improve the security of the building.

ADMINISTRATIVE CONSIDERATIONS:

- Due to the scale of these individual projects, we believe combining both projects into one construction package will create cost savings for the District.
- Later in tonight's meeting, we are recommending the firm of VLK Architects to serve as our architect for these construction projects and will also recommend the procurement method most appropriate for both projects.
- Leesa Vardeman, with VLK Architects, will review the highlights of the Learning Center addition and provide a more in-depth look at the AHS vestibule redesign.

FISCAL NOTE:

The cost of the additions/renovations to the Aledo ISD Learning Center and Aledo High School Vestibule will be paid from unspent, currently available, 2008 bonds proceeds. There will be no impact to the District's debt position or to the interest and sinking fund portion of the District's tax rate.

ADMINISTRATIVE RECOMMENDATION:

Report Only – Consideration for action on this item will occur later in tonight's meeting.



ALEDO I.S.D.

Proposed Expansion to

THE LEARNING CENTER

Schematic Design Review



VLK | ARCHITECTS

January 14, 2013





Proposed Expansion to The Learning Center
PROJECT GOALS
Schematic Design Review



VLK | ARCHITECTS

TLC currently houses DAEP and Alternative Education students

- DAEP serves both secondary and elementary students

Accommodate increased capacity due to testing requirements

Provide more graduation opportunities for students



Proposed Expansion to The Learning Center
PROJECT GOALS
Schematic Design Review



VLK | ARCHITECTS

Add learning spaces on both sides of the building

- Minimum of 2 additional learning spaces for DAEP
- 4-6 additional learning spaces for Alternative Education

Update the entrance to the building

- Provide distinctions between the programs

Provide space for outdoor learning and lunch

Project priority is to provide maximum flexibility for the Alternative Education learning spaces



Alternative Education additions

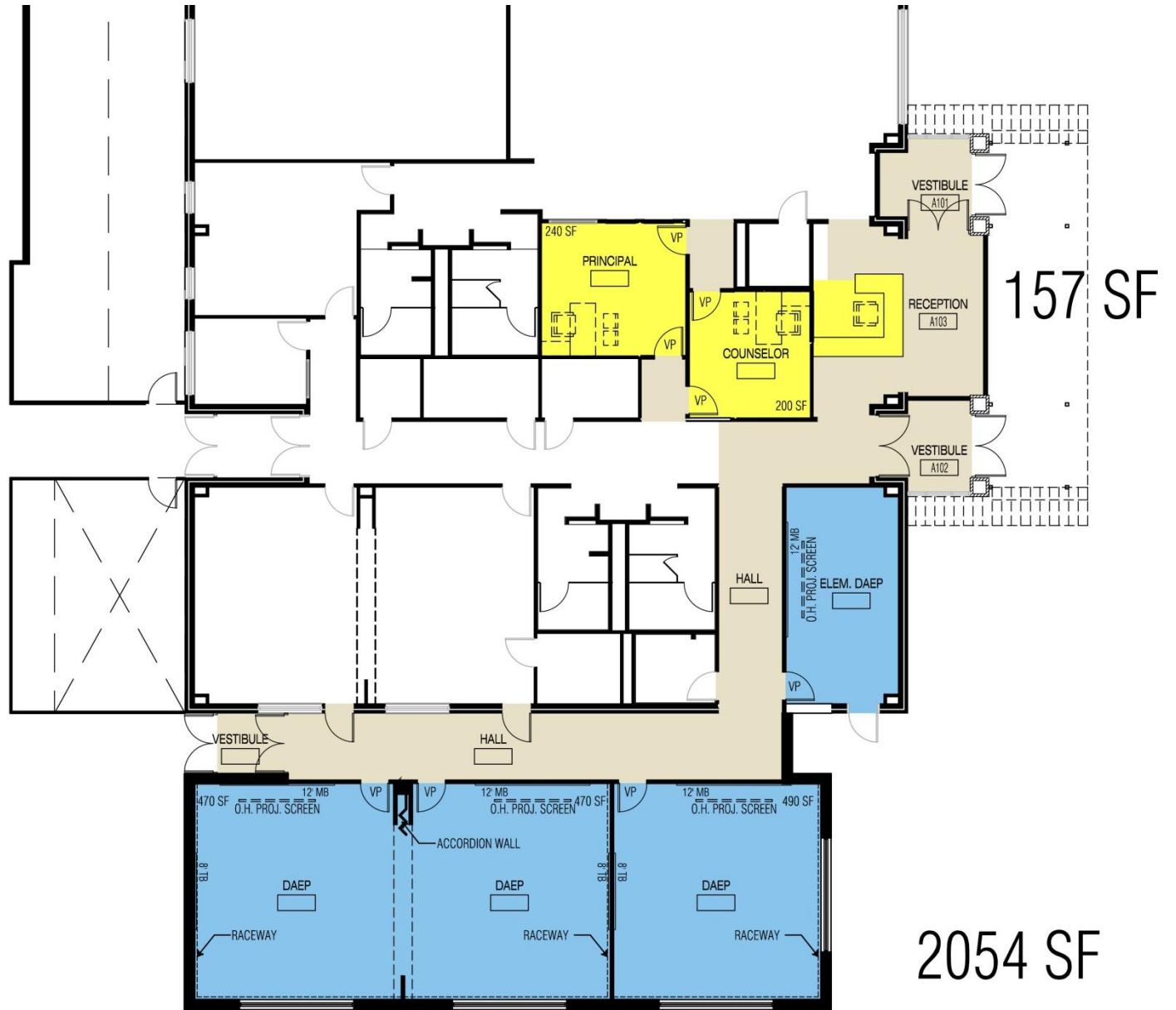
Site improvements



New entrance and administration renovations

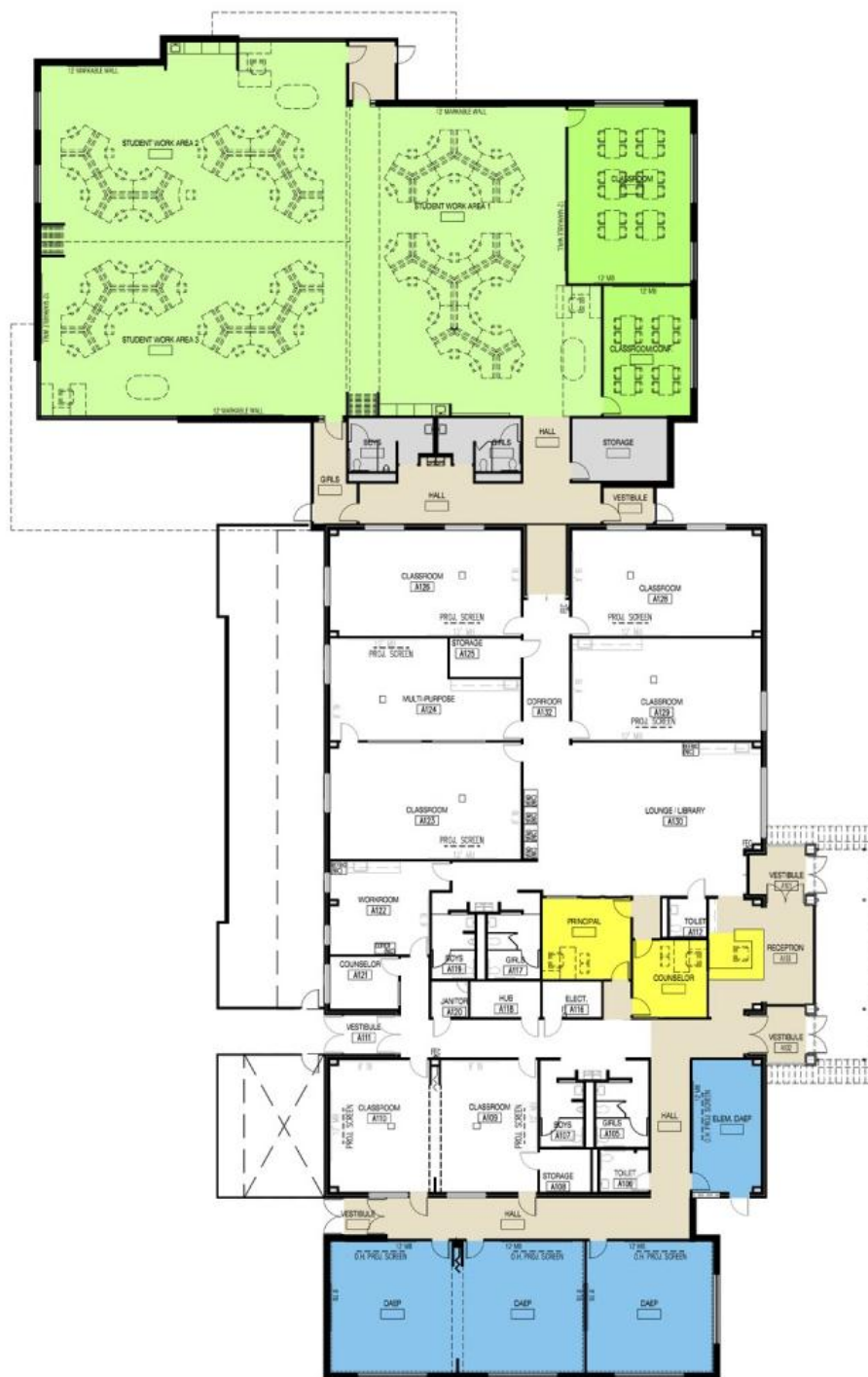
DAEP additions and renovations







7862 SF
60 STUDENTS



Total: 7862 SF



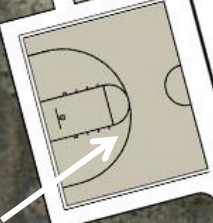
Existing Utilities



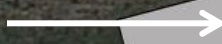
Seating Area



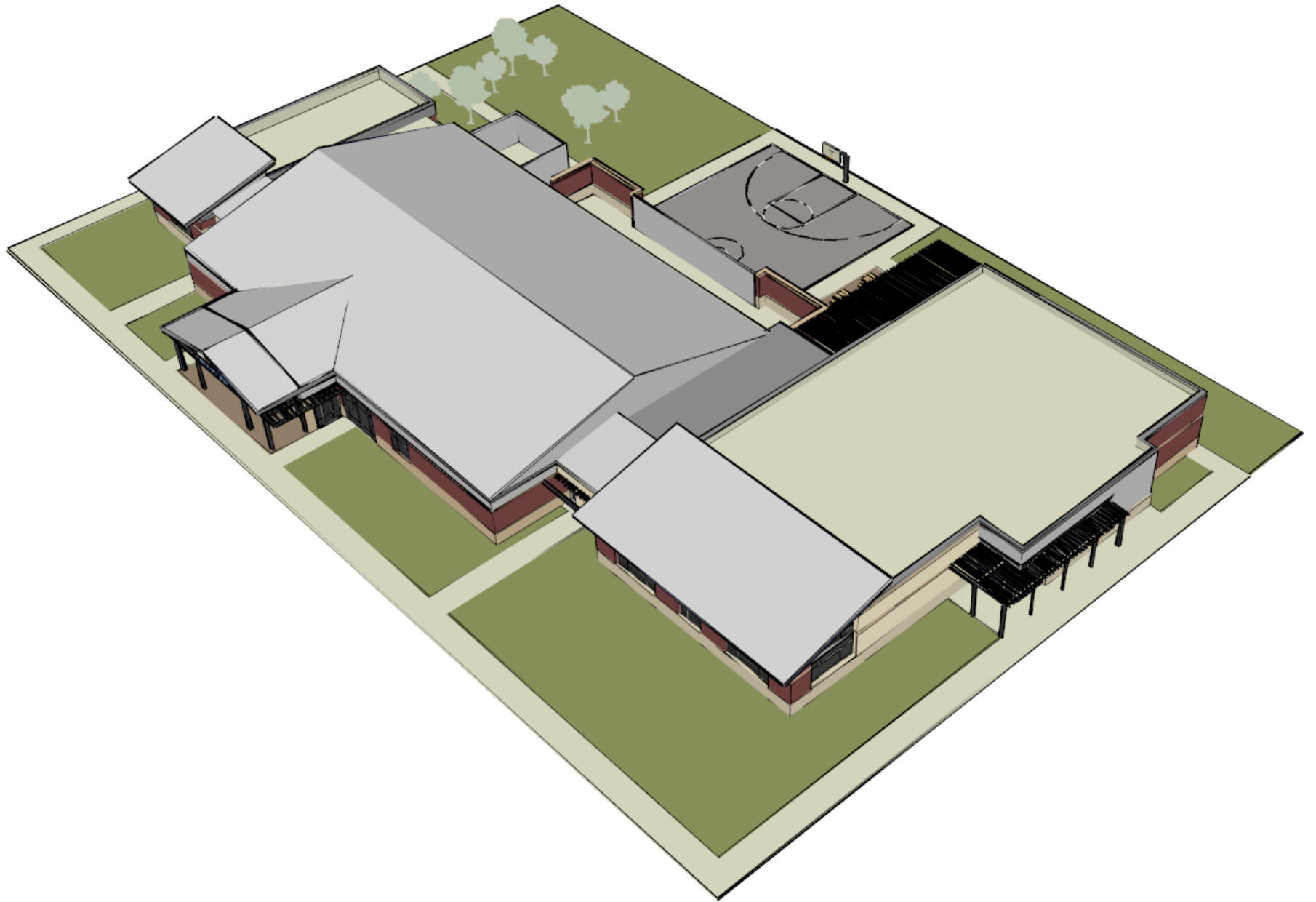
Play Surface

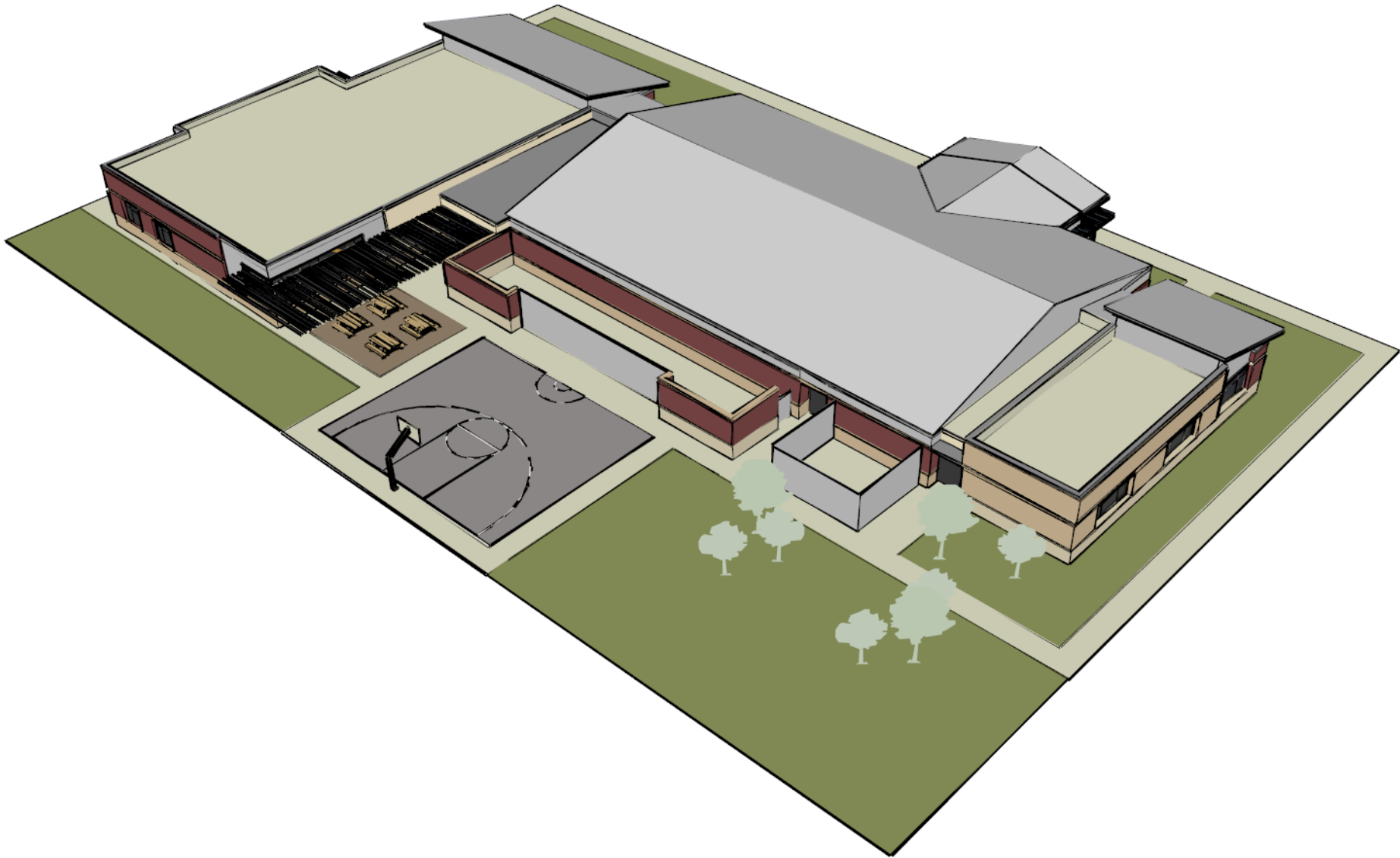


Future Parking



Bailey Ranch Rd











Proposed Expansion to The Learning Center

INFORMATION

Schematic Design Review



VLK | ARCHITECTS

Estimation of probable project cost at schematic level: \$2,725,000

- Factors:

- Rock excavation
- Relocating utilities
- New electrical services
- Standing seam architectural elements
- Relative scale of project
- Occupied structure
- FF&E
- Technology
- Professional fees

Substantial completion mid 2013/2014 school year





DEMO PLAN
 SCALE: 3/32" = 1'-0"

ALEDO HIGH SCHOOL
SECURED VESTIBULE
 JANUARY 8, 2013



LOBBY

PEIMS - OPT 2

DARK ROOM

GIRLS

VEST.

STORAGE

CORRIDOR

VESTIBULE

CLINIC

COTS

SECRETARY

RECEPTION

TOILET

PEIMS - OPT 1

STORAGE

ATTENDANCE

SECURITY

STUDENT STORE

OFFICE

TOILET

COUNSELOR

CONFERENCE

WAITING AREA

CORRIDOR

MAIL

COUNSELOR

STORAGE

NEW STOREFRONT

DISTANCE LEARNING

TEACHERS LOUNGE

COUNSELOR

RECORDS

RECEPTION

NEW STOREFRONT

COUNSELOR

OFFICE SUPPLIES

CASH

VESTIBULE

TLT.

TLT.

COUNSELOR

STORAGE

SECRETARY

SEC/STG



1 FLOOR PLAN
SCALE: 3/32" = 1'-0"

WORKROOM

ASSIST. PRIN.

STORAGE

ASSIST. PRIN.

ASSIST. PRIN.

ELEC.

PRIN. SECRETARY

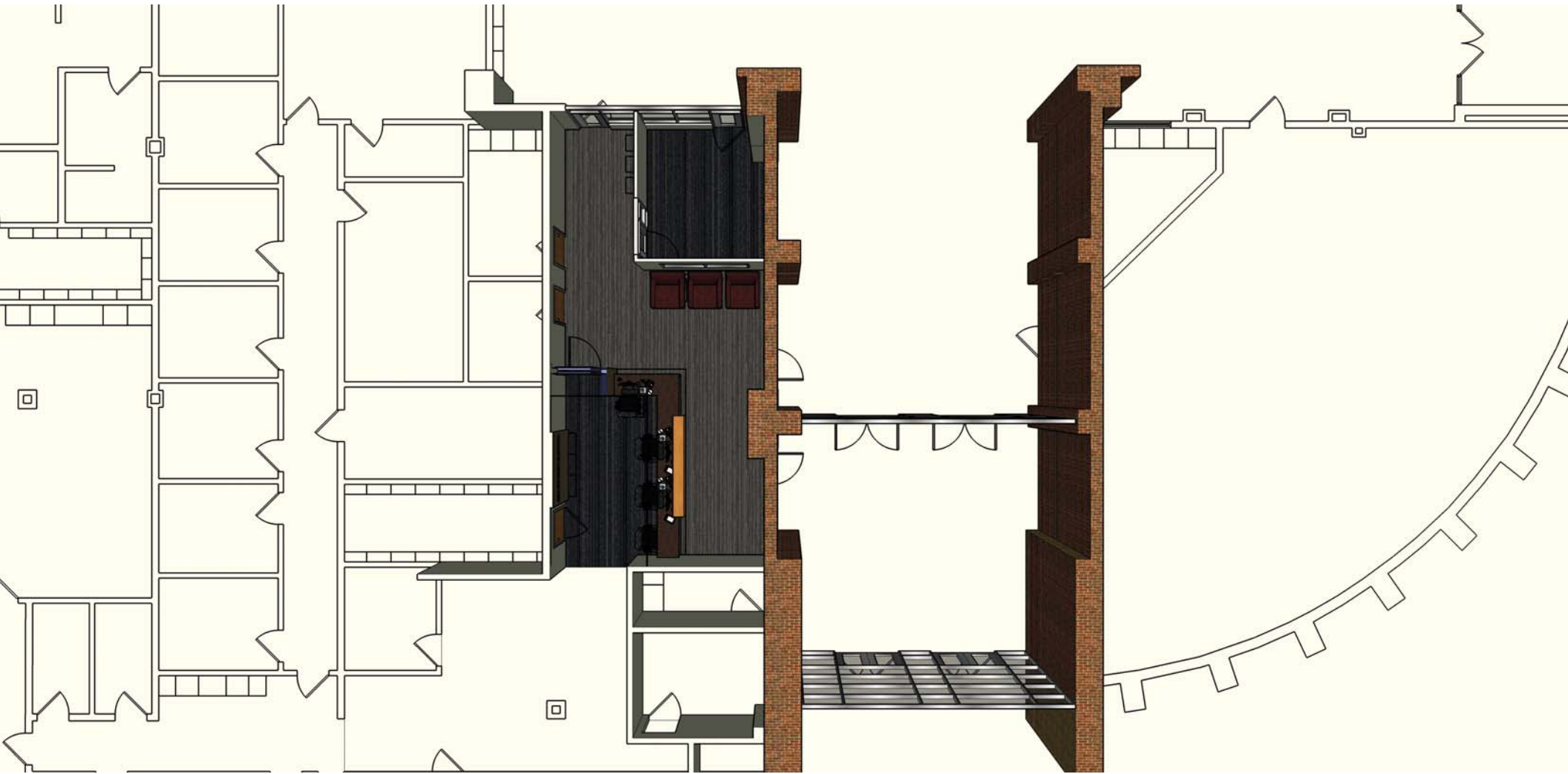
PRINCIPAL

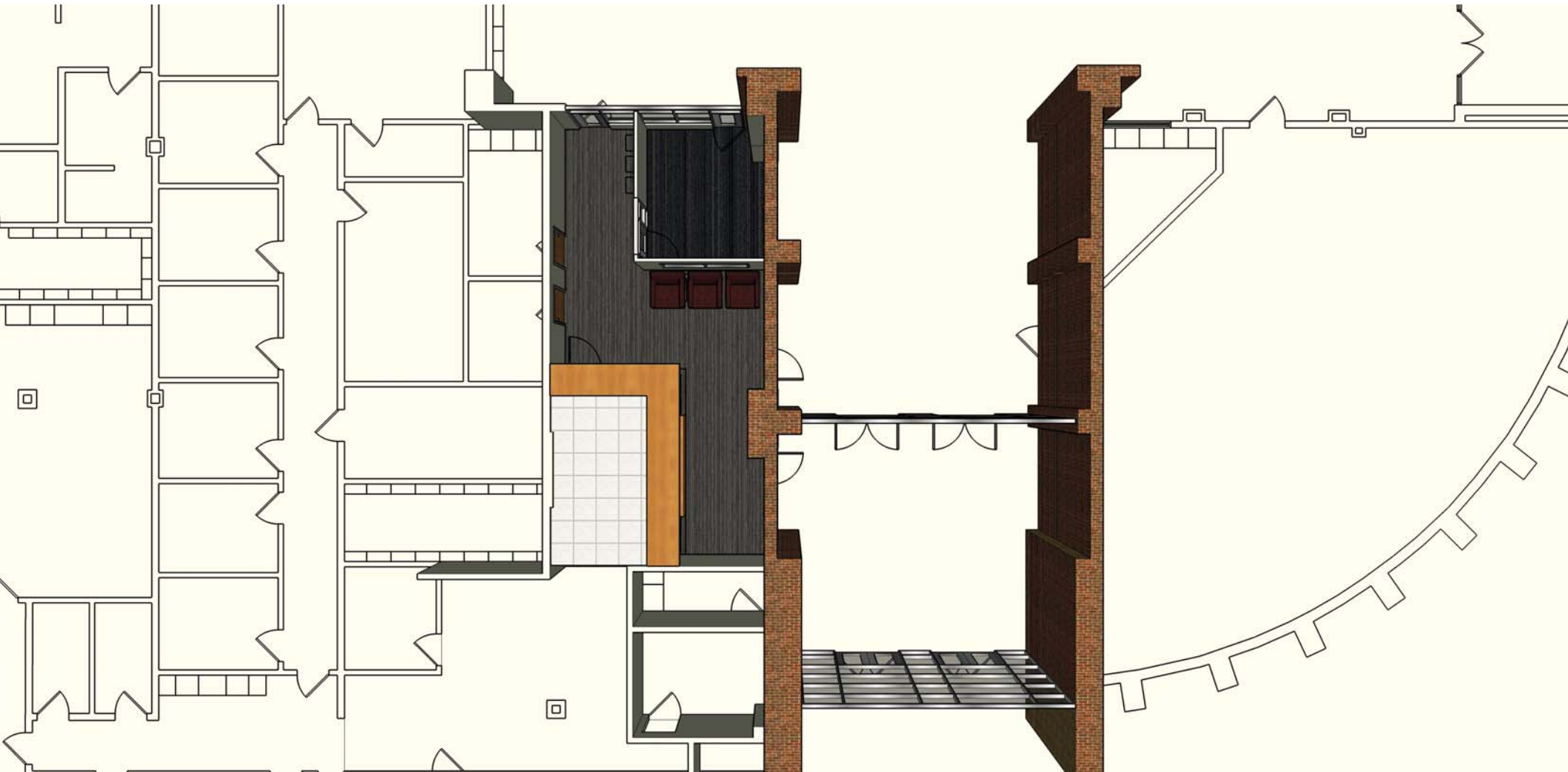
STORAGE

STORAGE

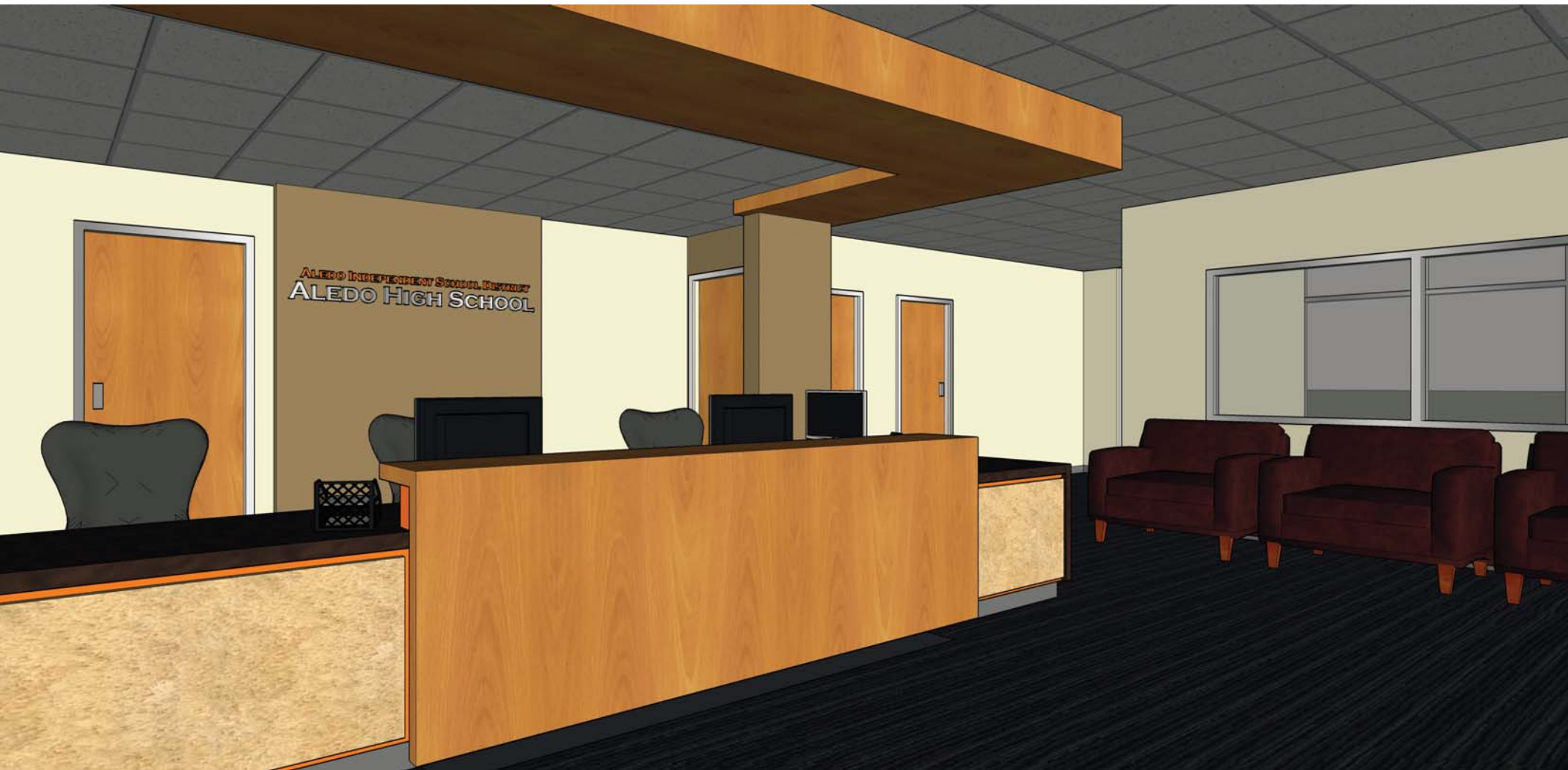
STORAGE

ALEDO HIGH SCHOOL
SECURED VESTIBULE
JANUARY 8, 2013









ALEDO INDEPENDENT SCHOOL DISTRICT
ALEDO HIGH SCHOOL

