



**New Fairfield Public Schools
New Fairfield, CT**

2022-23 Enrollment Projection Report

Table of Contents

Section	Page
Enrollment Summary.....	1
Historical Enrollment Table.....	2
Historical Enrollment Graph.....	3
Projected Enrollment Table.....	4
Projected Enrollment Graph.....	5
Historical & Projected Enrollment Graph.....	6
Historical & Projected Enrollment in Grade Combinations Line Graph.....	7
Historical & Projected Enrollment in Grade Combinations Stacked Column Graph.....	8
Birth to Kindergarten Relationship Graph.....	9
Additional Information	10
New England's PK-12 Enrollment Trends.....	11
Reliability and Use of this Document	12

Enrollment Summary

The global pandemic continues to influence our nation's public health and economic stability in unpredictable ways. As such, it is still too early to identify many of the factors that could impact school enrollments. Over the past school year, we have seen fluctuations in the real estate market and job trends, which have impacted student attendance patterns. Moreover, during the past school year, we have seen how school enrollment patterns can differ substantially from one district to another, with some districts losing students while others experience an influx of students.

We are pleased to send you this report displaying the past, present, and projected enrollments for the District. These ten-year projections are designed to provide the District with yearly, up-to-date enrollment information that can be used by boards and administrators for effective planning and allocation of resources. Included in this report are graphs representing historical and projected grade-by-grade enrollments, as well as historical and projected enrollments in grade combinations. We have received the figures given to us by the District, and we assume that the method of collecting the enrollment data has been consistent from year to year.

Enrollment projections are more reliable in Years #1-4 in the future and less reliable in the "out-years." Projections six to ten years out may serve as a guide to future enrollments and are useful for planning purposes. In light of this, NESDEC has added a "Second Semester refresher" enrollment projection at no cost to affiliates. (For more information, please refer to the Reliability and Use of This Document section).

The NESDEC enrollment projection fell within 20 students of the K-12 total, 2,051 students projected vs. 2,071 enrolled.

Births increased by 3 from a previous ten-year average of 105 to a projected average of 102. In most districts, Grades 1-8 are very stable in enrollments. However, there have been increases in 7 of the 8 most recent years, leading to a net increase averaging 19 students per year.

Over the next three years, K-2 enrollments are projected to increase by +11 students, Grades 3-5 enrollments are projected to decrease by -6 students, Grades 6-8 enrollments are projected to increase by +13 students, and Grades 9-12 enrollments are projected to decrease by -21 students, as students move through the grades.

Historical Enrollment

School District: New Fairfield, CT

10/27/2022

Historical Enrollment By Grade																			
Birth Year	Births*	School Year	PK	K	1	2	3	4	5	6	7	8	9	10	11	12	UNGR	K-12	PK-12
2007	125	2012-13	67	154	163	151	204	196	201	216	206	232	256	280	232	248	0	2739	2806
2008	125	2013-14	66	162	151	170	157	201	203	204	216	206	247	246	261	241	0	2665	2731
2009	85	2014-15	85	139	158	162	174	154	199	209	204	216	213	240	240	268	0	2576	2661
2010	117	2015-16	67	153	130	151	165	173	152	193	198	199	230	213	228	245	0	2430	2497
2011	102	2016-17	77	136	153	138	152	164	172	152	190	201	188	226	211	235	0	2318	2395
2012	100	2017-18	74	150	139	153	137	153	170	180	154	190	190	186	225	206	0	2233	2307
2013	85	2018-19	77	112	157	139	156	141	161	174	184	158	183	189	194	223	0	2171	2248
2014	95	2019-20	89	143	115	152	144	161	139	174	175	189	152	179	185	187	0	2095	2184
2015	95	2020-21	71	119	149	116	153	149	169	144	179	174	181	151	182	194	0	2060	2131
2016	93	2021-22	68	129	137	153	132	159	153	176	160	183	169	178	147	189	0	2065	2133
2017	98	2022-23	76	126	140	142	156	135	169	157	179	160	183	178	182	164	0	2071	2147

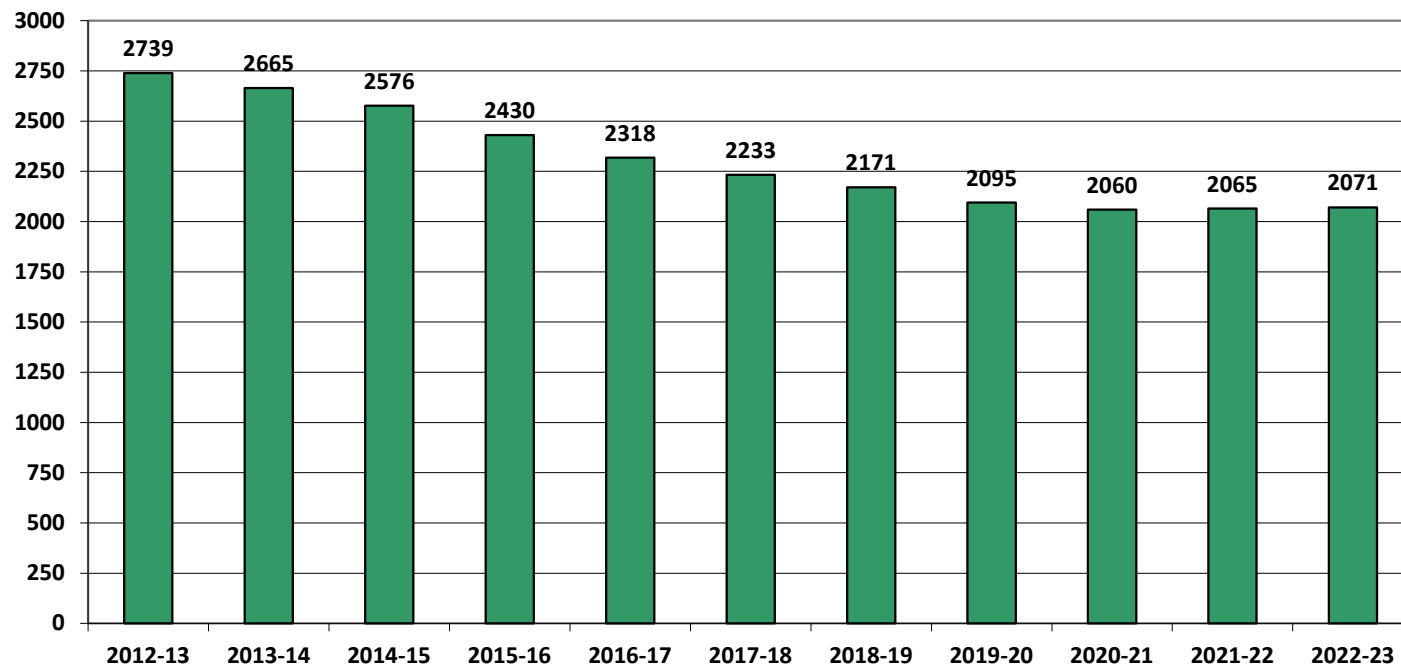
*Birth data provided by Public Health Vital Records Departments in each state.

Historical Enrollment in Grade Combinations									
Year	PK-5	K-5	PK-2	K-2	3-5	6-8	PK-8	K-8	9-12
2012-13	1136	1069	535	468	601	654	1790	1723	1016
2013-14	1110	1044	549	483	561	626	1736	1670	995
2014-15	1071	986	544	459	527	629	1700	1615	961
2015-16	991	924	501	434	490	590	1581	1514	916
2016-17	992	915	504	427	488	543	1535	1458	860
2017-18	976	902	516	442	460	524	1500	1426	807
2018-19	943	866	485	408	458	516	1459	1382	789
2019-20	943	854	499	410	444	538	1481	1392	703
2020-21	926	855	455	384	471	497	1423	1352	708
2021-22	931	863	487	419	444	519	1450	1382	683
2022-23	944	868	484	408	460	496	1440	1364	707

Historical Percentage Changes			
Year	K-12	Diff.	%
2012-13	2739	0	0.0%
2013-14	2665	-74	-2.7%
2014-15	2576	-89	-3.3%
2015-16	2430	-146	-5.7%
2016-17	2318	-112	-4.6%
2017-18	2233	-85	-3.7%
2018-19	2171	-62	-2.8%
2019-20	2095	-76	-3.5%
2020-21	2060	-35	-1.7%
2021-22	2065	5	0.2%
2022-23	2071	6	0.3%
Change	-668		-24.4%

Historical Enrollment

K-12, School Years 2012-13 to 2022-23



Projected Enrollment

School District: New Fairfield, CT

10/27/2022

Enrollment Projections By Grade*																				
Birth Year	Births*		School Year	PK	K	1	2	3	4	5	6	7	8	9	10	11	12	UNGR	K-12	PK-12
2017	98		2022-23	76	126	140	142	156	135	169	157	179	160	183	178	182	164	0	2071	2147
2018	109		2023-24	76	147	132	143	148	161	140	175	164	180	156	183	179	190	0	2098	2174
2019	97		2024-25	77	131	154	135	149	153	167	145	183	165	176	156	184	187	0	2085	2162
2020	91		2025-26	77	123	138	158	141	154	159	173	152	184	161	176	157	192	0	2068	2145
2021	128	(prov.)	2026-27	78	173	129	141	165	146	160	164	181	153	180	161	177	164	0	2094	2172
2022	105	(est.)	2027-28	78	141	182	132	147	170	152	166	172	182	149	180	162	185	0	2120	2198
2023	106	(est.)	2028-29	79	143	148	186	138	152	177	157	174	173	178	149	181	169	0	2125	2204
2024	105	(est.)	2029-30	79	142	150	152	194	142	158	183	164	175	169	178	150	189	0	2146	2225
2025	107	(est.)	2030-31	80	144	149	154	159	200	148	163	192	165	171	169	179	157	0	2150	2230
2026	110	(est.)	2031-32	80	149	151	153	161	164	208	153	171	193	161	171	170	187	0	2192	2272
2027	107	(est.)	2032-33	81	144	156	155	160	166	171	215	160	172	188	161	172	178	0	2198	2279

Note: Ungraded students (UNGR) often are high school students whose anticipated years of graduation are unknown, or students with special needs - UNGR not included in Grade Combinations for 7-12, 9-12, etc.

Based on an estimate of births

Based on children already born

Based on students already enrolled

*Birth data provided by Public Health Vital Records Departments in each state.

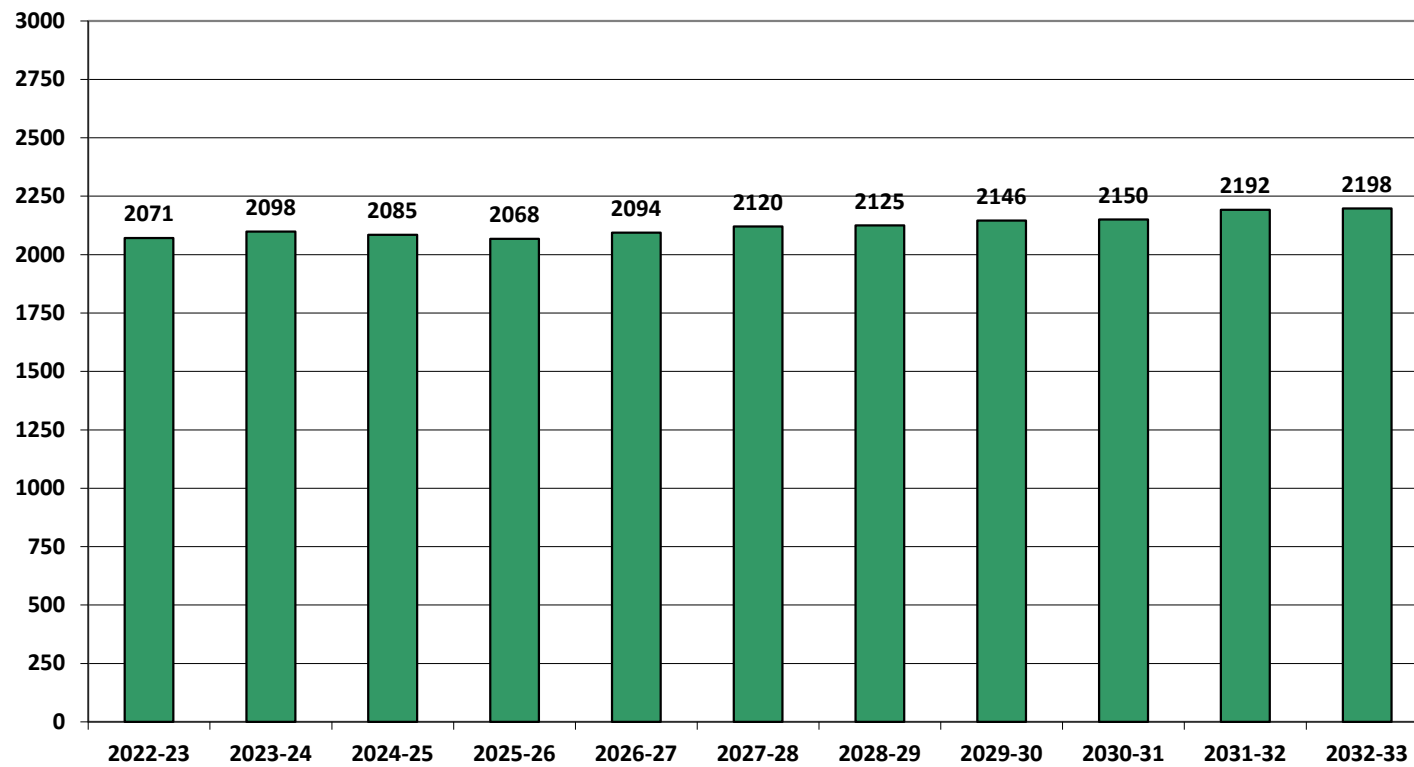
Projected Enrollment in Grade Combinations*									
Year	PK-5	K-5	PK-2	K-2	3-5	6-8	PK-8	K-8	9-12
2022-23	944	868	484	408	460	496	1440	1364	707
2023-24	947	871	498	422	449	519	1466	1390	708
2024-25	966	889	497	420	469	493	1459	1382	703
2025-26	950	873	496	419	454	509	1459	1382	686
2026-27	992	914	521	443	471	498	1490	1412	682
2027-28	1002	924	533	455	469	520	1522	1444	676
2028-29	1023	944	556	477	467	504	1527	1448	677
2029-30	1017	938	523	444	494	522	1539	1460	686
2030-31	1034	954	527	447	507	520	1554	1474	676
2031-32	1066	986	533	453	533	517	1583	1503	689
2032-33	1033	952	536	455	497	547	1580	1499	699

Projected Percentage Changes			
Year	K-12	Diff.	%
2022-23	2071	0	0.0%
2023-24	2098	27	1.3%
2024-25	2085	-13	-0.6%
2025-26	2068	-17	-0.8%
2026-27	2094	26	1.3%
2027-28	2120	26	1.2%
2028-29	2125	5	0.2%
2029-30	2146	21	1.0%
2030-31	2150	4	0.2%
2031-32	2192	42	2.0%
2032-33	2198	6	0.3%
Change	127		6.1%

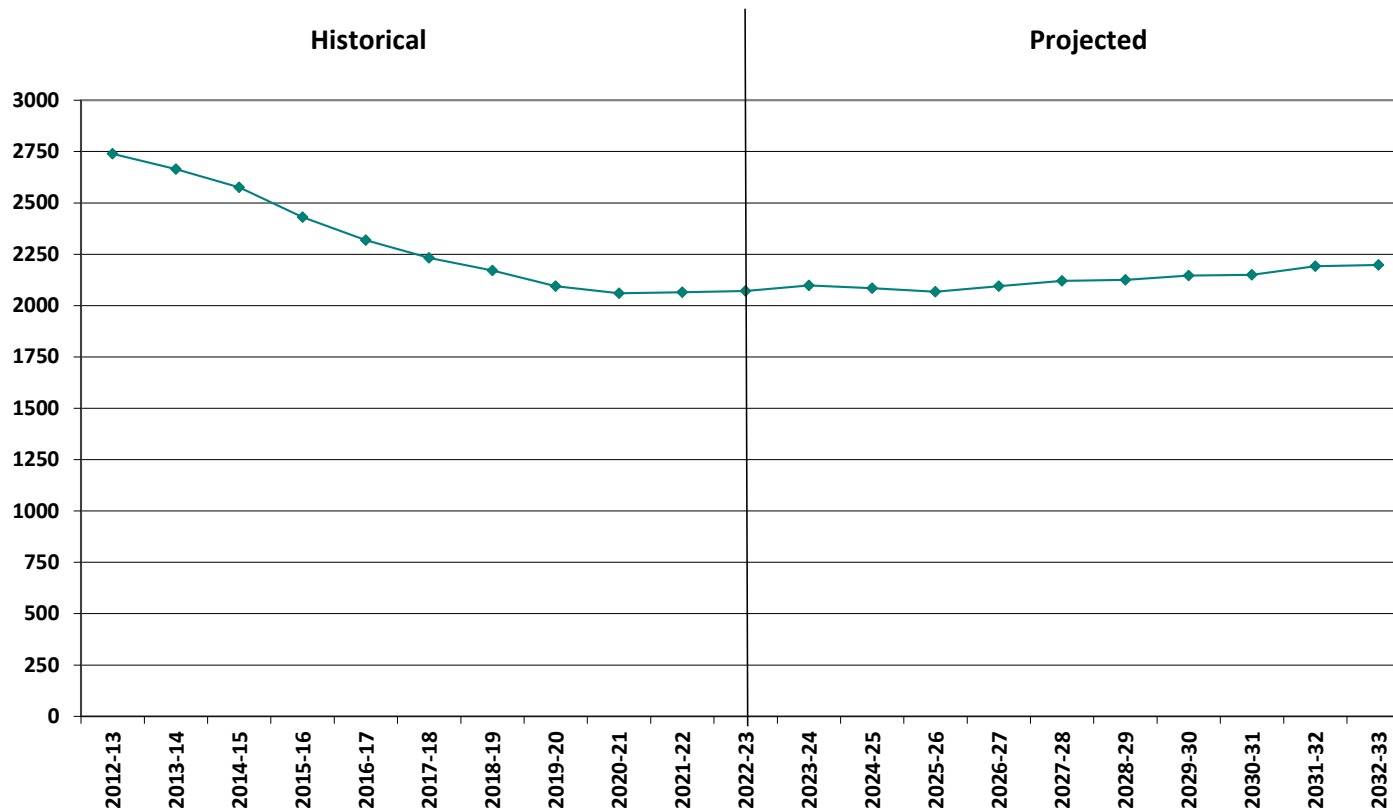
*Projections should be updated annually to reflect changes in in/out-migration of families, real estate sales, residential construction, births, and similar factors.

Projected Enrollment

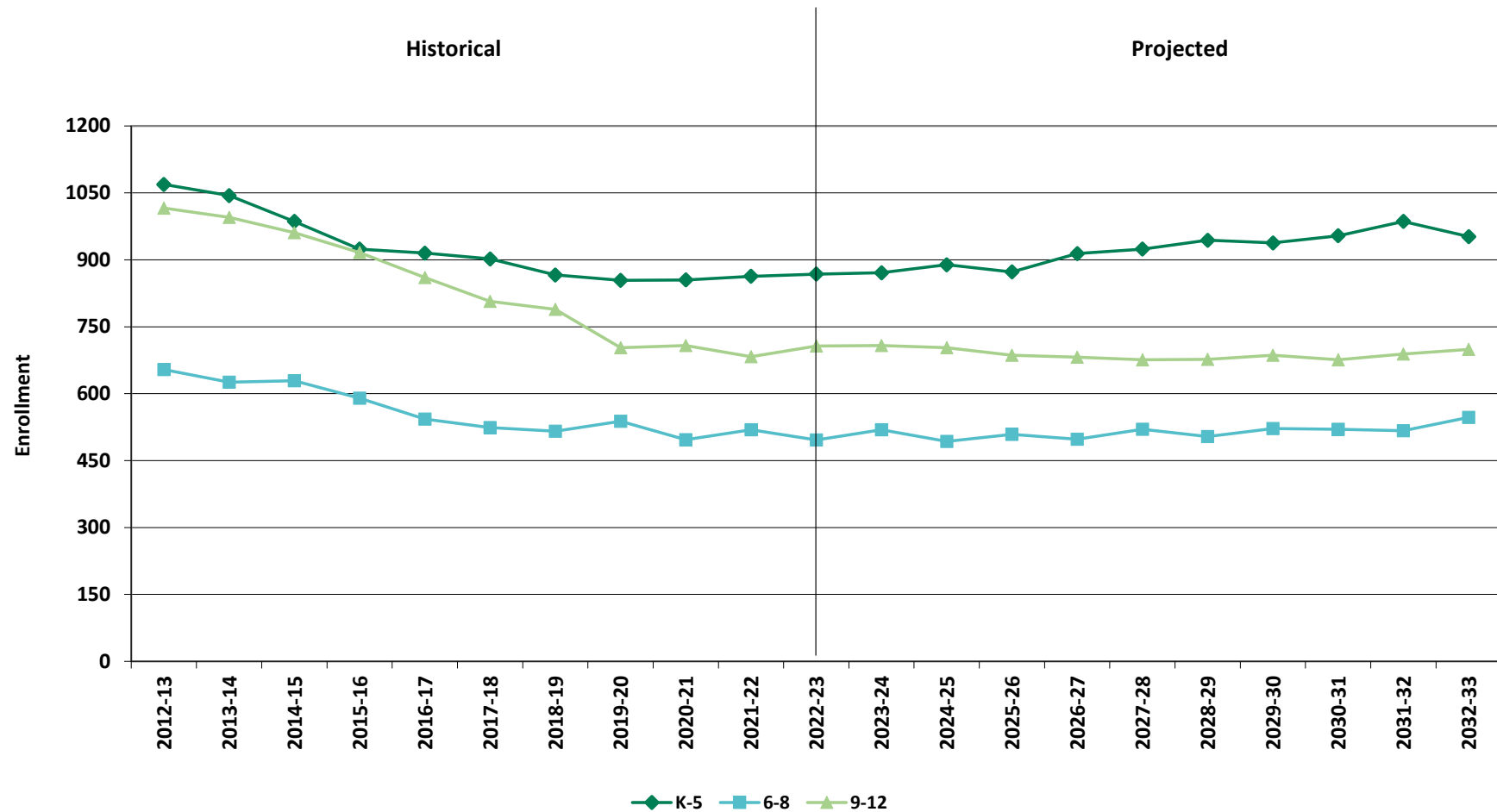
K-12, School Years 2022-23 to 2032-33



Historical & Projected Enrollment

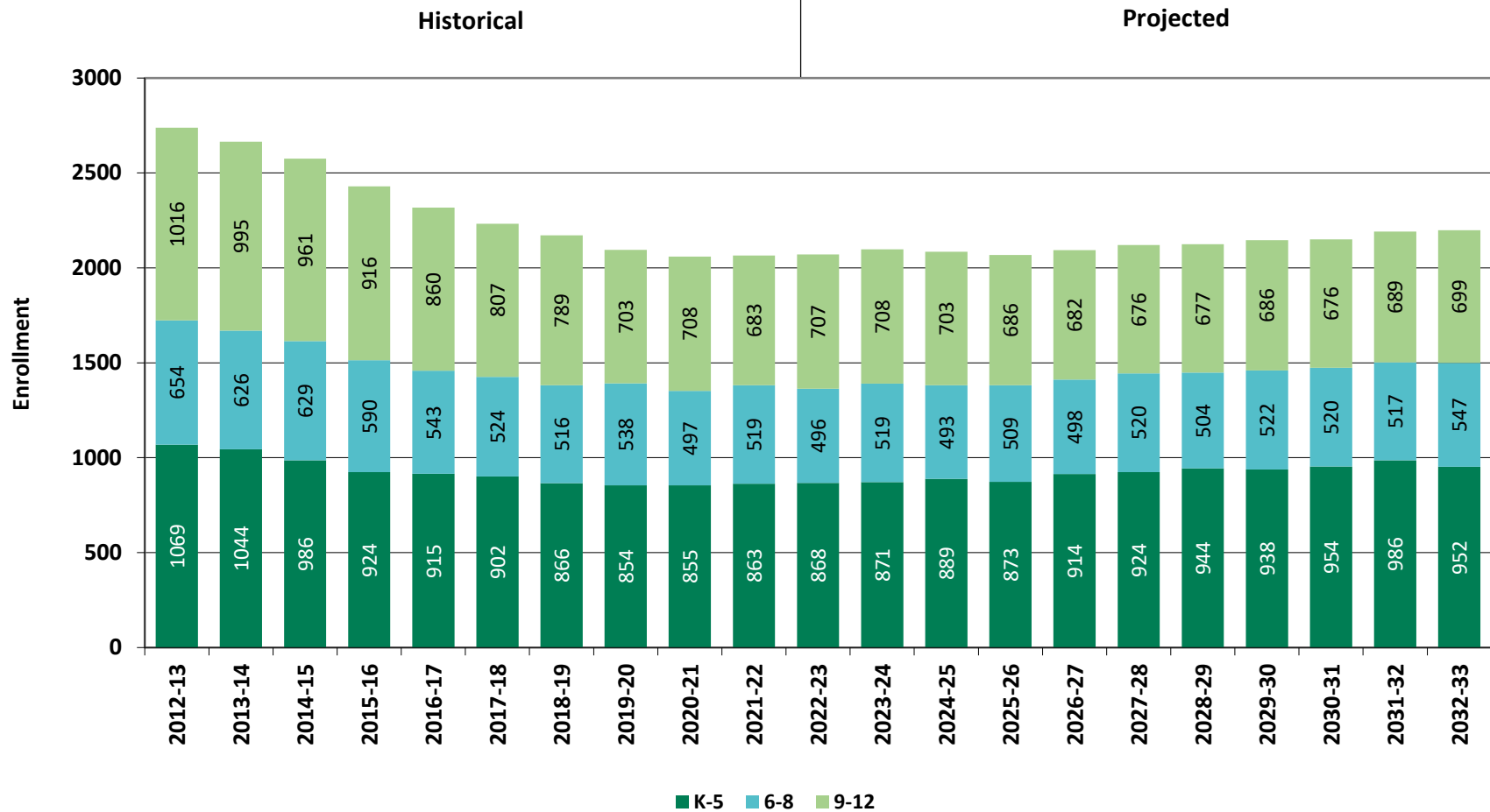


Historical & Projected Enrollments in Grade Combinations

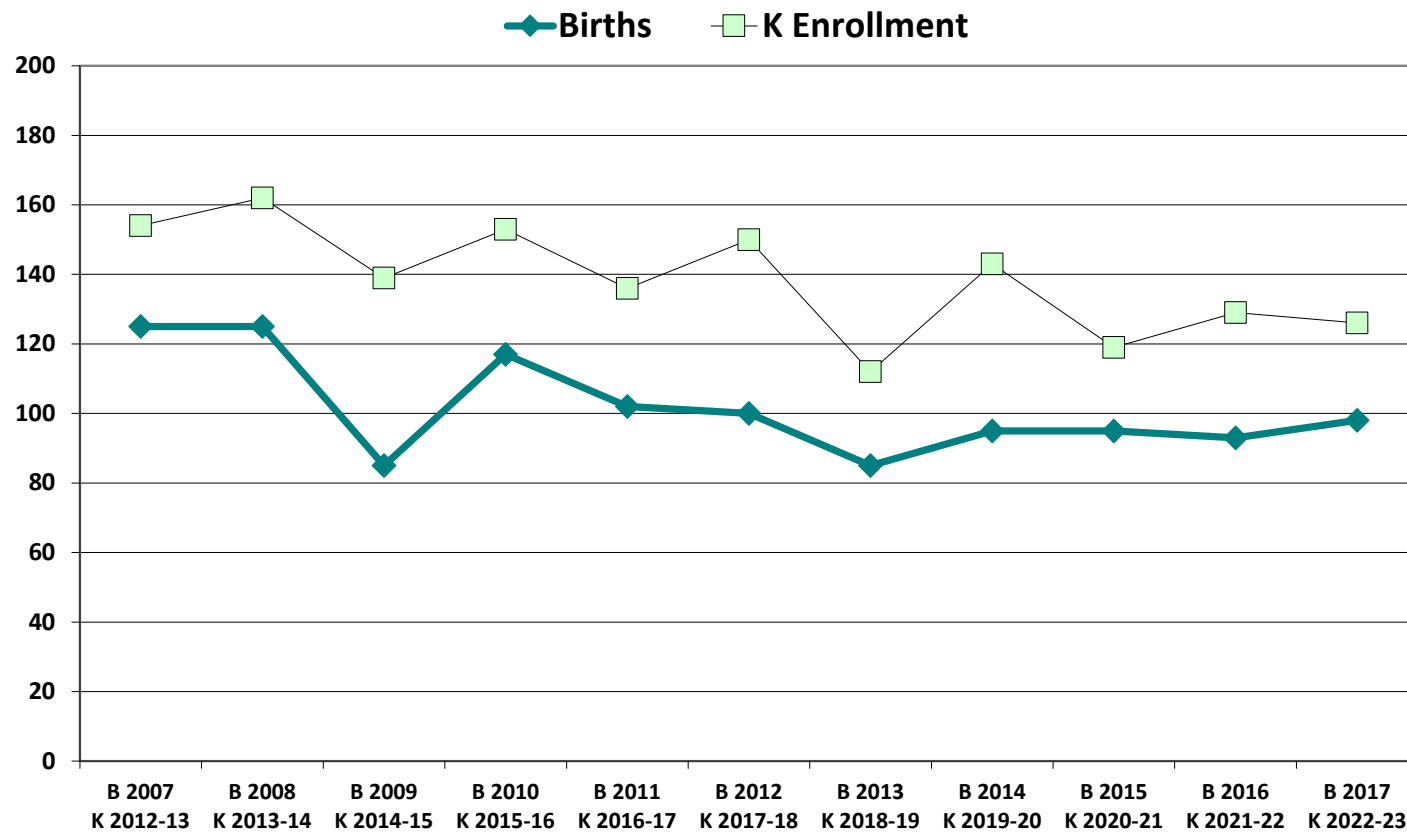




Historical & Projected Enrollments in Grade Combinations



Birth-to-Kindergarten Relationship



Additional Information

Building Permits Issued (Source: HUD)		
Year	Single-Family	Multi-Units
2012	7	0
2018	8	0
2019	6	0
2020	9	0
2021	5	0
2022	1 to date	0 to date

Enrollment History*		
Year	Career-Tech 9-12 Total	Non-Public K-12 Total
2012-13	32	n/a
2018-19	38	n/a
2019-20	39	n/a
2020-21	48	n/a
2021-22	57	n/a
2022-23	43	n/a

Residents in Non-Public Independent and Parochial Schools (General Education)*														
Oct. 1 Enrollment	K	1	2	3	4	5	6	7	8	9	10	11	12	K-12 TOTAL
	n/a	n/a	n/a	n/a	n/a	n/a	n/a	n/a	n/a	n/a	n/a	n/a	n/a	n/a

K-12 Home-Schooled Students*	
2022	14

K-12 Residents in Charter or Magnet Schools, or Choiced-out*	
2022	17

K-12 Special Education Outplaced Students*	
2022	5

K-12 Tuitioned-In, Choiced-In, & Other Non-Residents*	
2022	0

*The above data were provided by the District, with the exception of building permit data (provided by HUD).

"n/a" signifies that information was not provided by District.

New England's PK-12 Enrollment Trends

From 2020 to 2030, the US Department of Education anticipates changes in PK-12 enrollment of -2.4% in the South, -6.5% in the West, -3.8% in the Midwest, -6.2% in the Northeast, and a total of -4.3% nationwide.

State	Fall 2020 PK - 12	Fall 2030 Projected	PK-12 Decline	% Change 2020-2030
CT	509,058	475,600	-33,458	-6.6%
ME	172,455	161,800	-10,655	-6.2%
MA	921,712	879,900	-41,812	-4.5%
NH	169,027	144,600	-24,427	-14.5%
RI	139,184	130,200	-8,984	-6.5%
VT	82,401	74,600	-7,801	-9.5%

Source: U.S. Department of Education, National Center for Education Statistics,
Enrollment In Public Schools fall 1990 to fall 2030, Table 203.20, March 2022.

Although most New England Districts are seeing a decline in the number of births, NESDEC's experience indicates that the impact on enrollment varies from District to District. Almost half of New England Districts have been growing in PK-12 enrollment, and a similar number are declining (often in rural areas), with the other Districts remaining stable.

Reliability and Use of this Document

PROJECTION METHODOLOGY

Cohort component (survival) technique is a frequently used method of preparing enrollment forecasts. NESDEC uses this method, but modifies it in order to move away from forecasts that are wholly computer- or formula-driven. Such modification permits the incorporation of important, current district-specific information into the generation of enrollment forecasts (such as in/out-migration of students, resident births, HUD-reported building permits, etc.). Percentages are calculated from the historical enrollment data to determine a reliable percentage of increase or decrease in enrollment between any two grades. For example, if 100 students enrolled in Grade 1 in 2018-19 increased to 104 students in Grade 2 in 2019-20, the percentage of survival would be 104%, or a ratio of 1.04. Ratios are calculated between each pair of grades or years in school over several recent years.

After study and analysis of the historical ratios, and based upon a reasonable set of assumptions regarding births, migration rates, retention rates, etc., ratios most indicative of future growth patterns are determined for each pair of grades. The ratios thus selected are applied to the present enrollment statistics to project into future years. The ratios are the key factors in the reliability of the projections, assuming validity of the data at the starting point.

RELIABILITY OF ENROLLMENT PROJECTIONS

Projections can serve as useful guides to school administrators for educational planning. Enrollment projections are more reliable in Years #1-4 in the future and less reliable in the "out-years." Projections six to ten years out may serve as a guide to future enrollments and are useful for planning purposes, but they should be viewed as subject to change given the likelihood of potential shifts in underlying assumptions/trends, such as student migration, births as they relate to Kindergarten enrollment, and other factors.

Projections that are based upon **the children who already are in the district** (the current K-12 population only) will be the most reliable. The second level of reliability will be for those children already **born into the community but not yet old enough to be in school**. The least reliable category is the group for which an estimate must be made **to predict the number of births**, thereby adding additional uncertainty. See these three multi-colored groupings on the "Projected Enrollment" tab.

Annual updates allow for early identification of recent changes in historical trends. When the actual enrollment in a grade is significantly different (higher or lower) from the projected number, it is important (yet difficult) to determine whether this is a one-year aberration or whether a new trend may have begun. **In light of this possibility, NESDEC urges all school districts to have updated enrollment forecasts developed by NESDEC each October.** This service is available at no cost to affiliated school districts.

USING THIS INFORMATION ELECTRONICALLY

If you would like to extract the information contained in this report for your own documents or presentations, you can use screenshots, which can be inserted into PowerPoint slides, Word documents, etc. Because screenshots create graphics, the image is not editable. Please feel free to contact us if you need assistance in this matter, by phone (508-481-9444) or by email (ep@nesdec.org).