

Browning High School  
Board of Trustee Report  
June 5, 2018  
Submitted by John E. Salois

---

Year End Assessment Data

Attached is a summary of our yearly data collection. The information was compiled by violet Sinclair-Boggs.

**Browning High School**  
2017 18  
Spring Benchmark







## Table of Contents

### **ISIP 2017 18**

Fall Benchmark: September 5 – 29, 2017

Winter Benchmark: January 2 – 26, 2018

Spring Benchmark: May 1 - 25, 2018

All Grades

9<sup>th</sup>

10<sup>th</sup>

11<sup>th</sup>

12<sup>th</sup>

### **Star Math**

9<sup>th</sup>

10<sup>th</sup>

11<sup>th</sup>

12<sup>th</sup>

### **ACT**

Spring 2016

Spring 2017

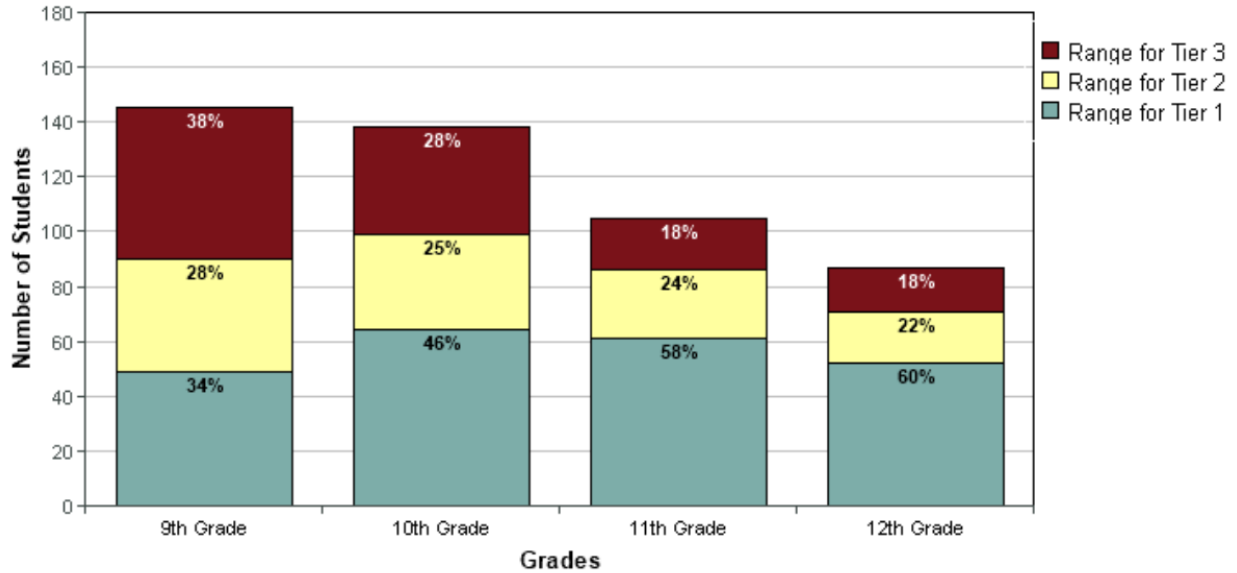
Spring 2018 – not yet available

**ISIP**

**Fall Benchmark - September**

**All Grades – 475/ 575 (79%) total students:**

**All Grades - September 2017**

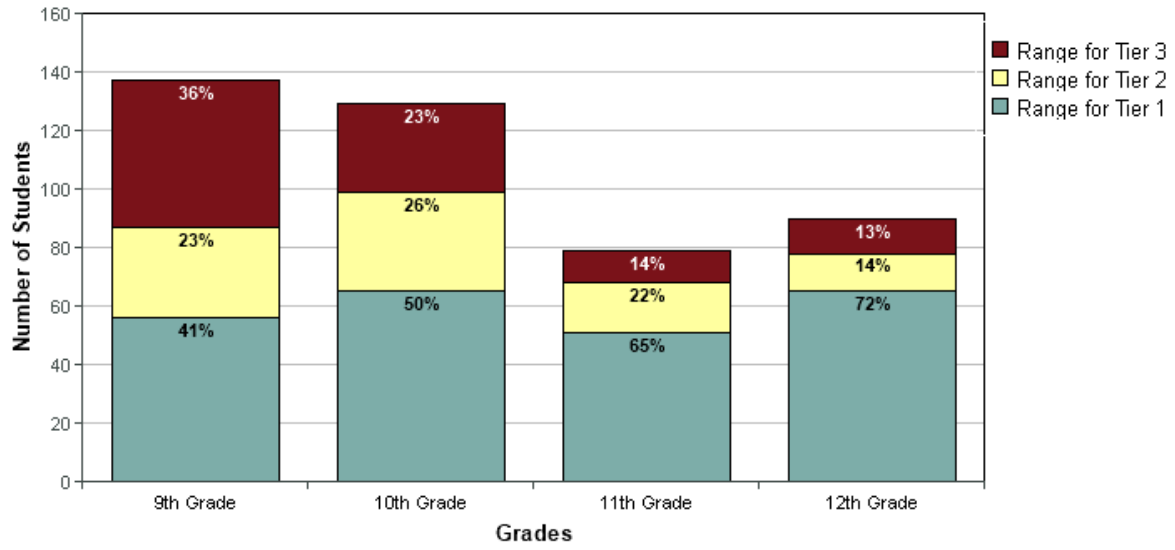


Tier	9th	10th	11th	12th
3	55 (38%)	39 (28%)	19 (18%)	16 (18%)
2	41 (28%)	35 (25%)	25 (24%)	19 (22%)
1	49 (34%)	64 (46%)	61 (58%)	52 (60%)

**All Grades – 439/ 466 (94%) total students:**

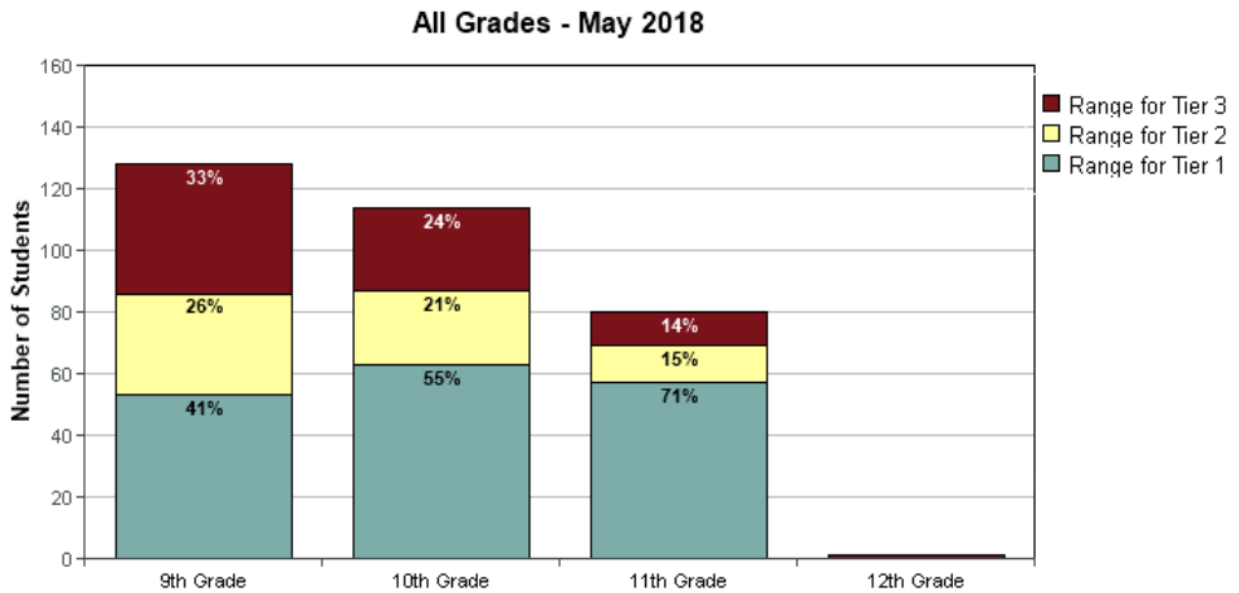
**Winter Benchmark - January**

### All Grades - January 2018



Tier	9 <sup>th</sup>	10 <sup>th</sup>	11 <sup>th</sup>	12 <sup>th</sup>
<b>3</b>	50 (36%)	30 (23%)	11 (14%)	16 (13%)
<b>2</b>	31 (23%)	34 (26%)	17 (22%)	13 (14%)
<b>1</b>	56 (41%)	65 (50%)	51 (65%)	65 (72%)

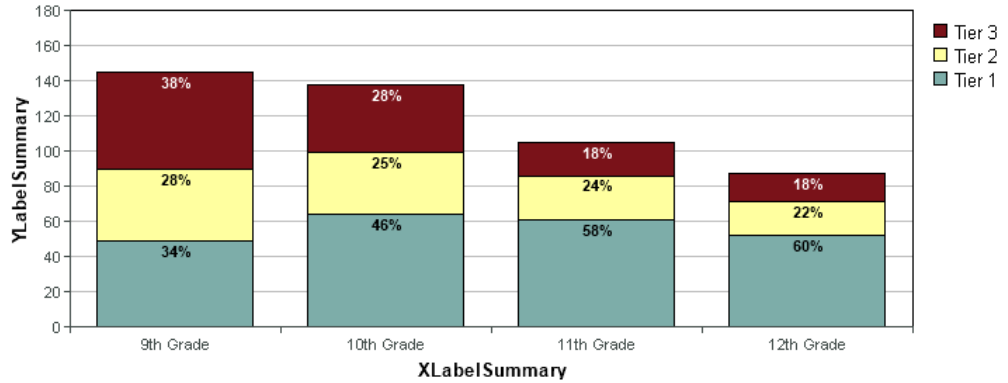
**All Grades – 321/ 448 (72%) total students:  
Spring Benchmark - May**



	Grades			
Tier	9 <sup>th</sup>	10 <sup>th</sup>	11 <sup>th</sup>	12 <sup>th</sup>
<b>3</b>	42 (33%)	27 (24%)	11 (14%)	1 (1%)
<b>2</b>	33 (26%)	24 (21%)	12 (15%)	(0%)
<b>1</b>	53 (41%)	63 (55%)	57 (71%)	(0%)

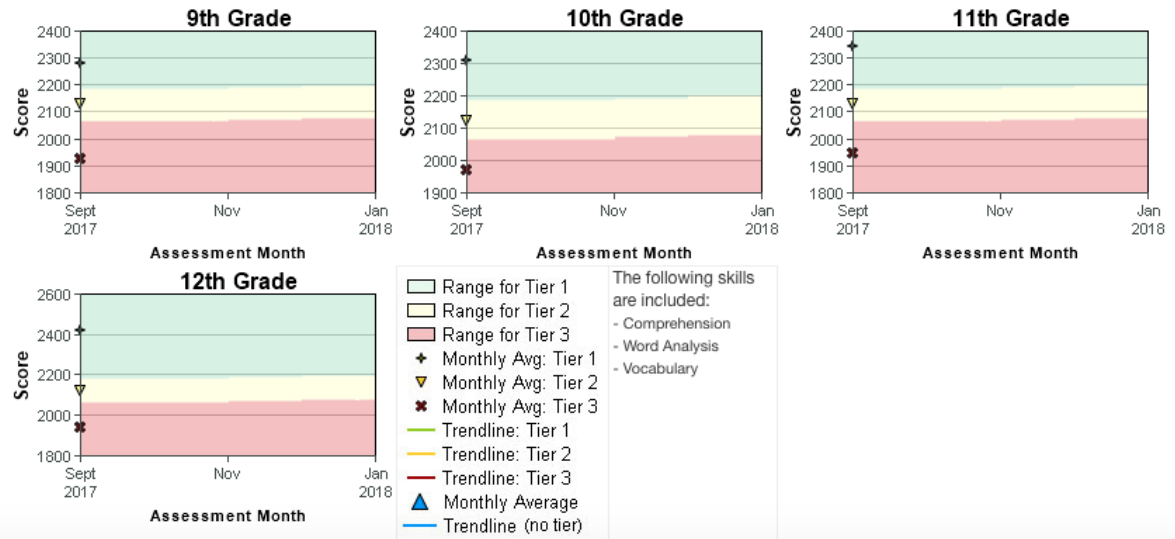
Below you will find ISIP™ data from **Browning High School** that has been collected for **September**. The students' score is used as the dividing line to determine students potentially at risk.

### ISIP Advanced Reading Summary (September 2017)



Total number of students who have been assessed using ISIP Advanced Reading in September: 475

### ISIP Advanced Reading - Skill Growth by Tier Level - Overall Reading

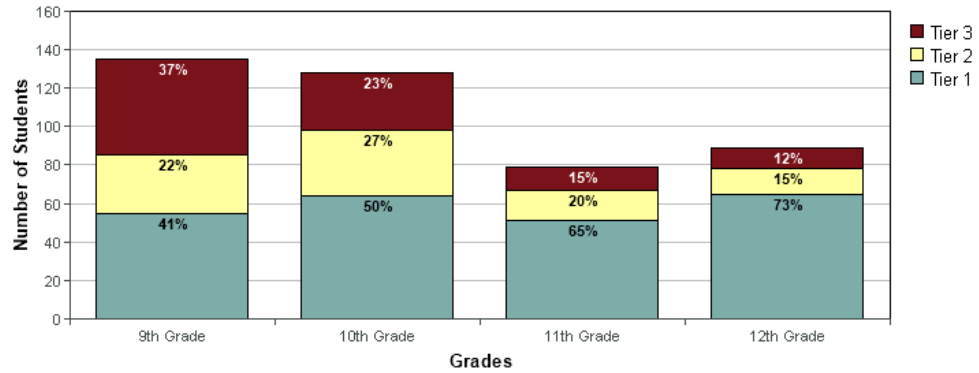


## in January for Browning High School

at Browning Public Schools - 2017/2018 School Year

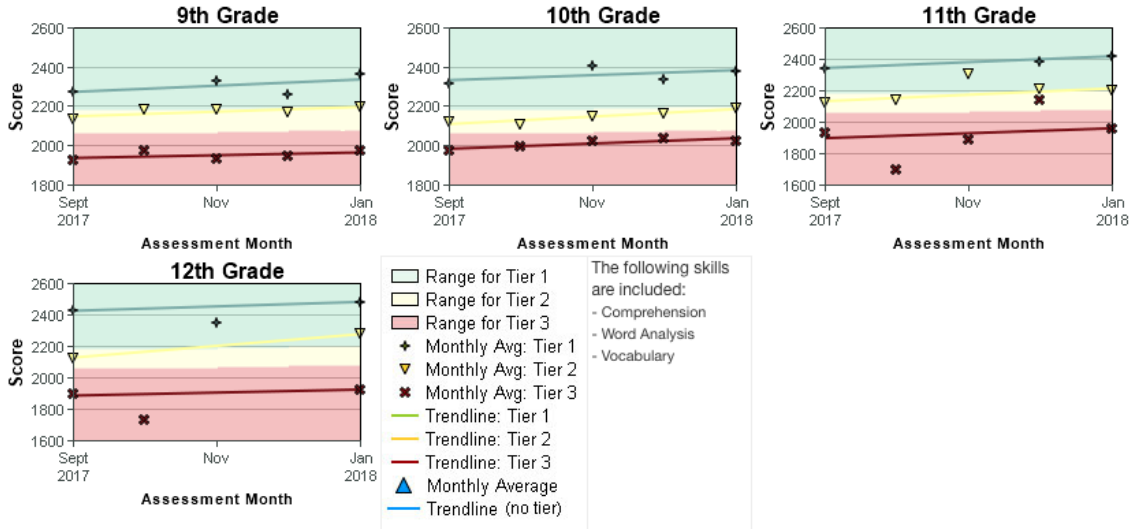
Below you will find ISIP™ data from **Browning High School** that has been collected for **January**. The students' score is used as the dividing line to determine students potentially at risk.

### ISIP Advanced Reading Summary (January 2018)



Total number of students who have been assessed using ISIP Advanced Reading in January: 431

### ISIP Advanced Reading - Skill Growth by Tier Level - Overall Reading



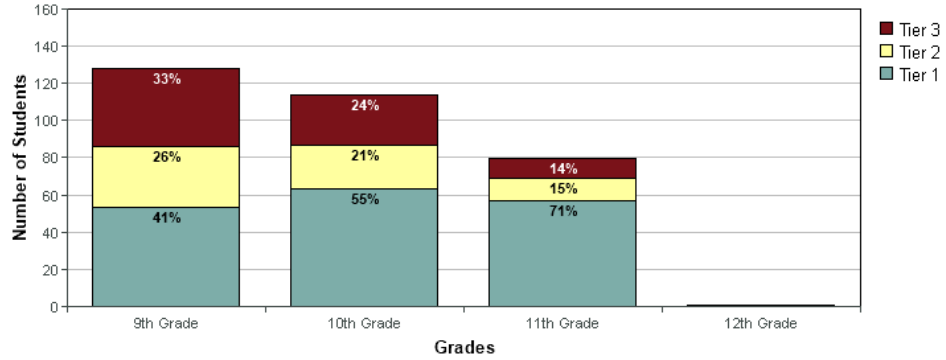


# in May for Browning High School

at Browning Public Schools - 2017/2018 School Year

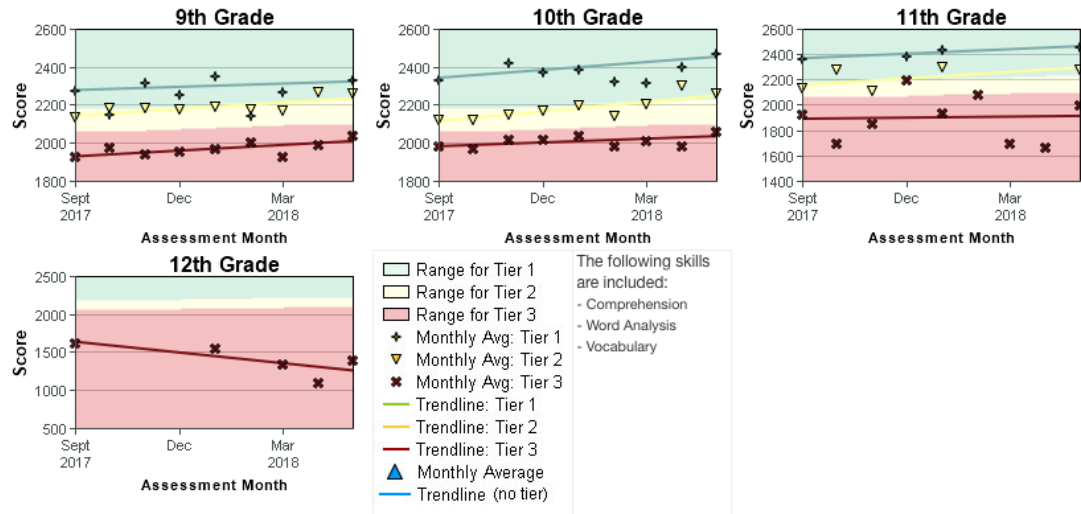
Below you will find ISIP™ data from **Browning High School** that has been collected for **May**. The students' score is used as the dividing line to determine students potentially at risk.

## ISIP Advanced Reading Summary (May 2018)



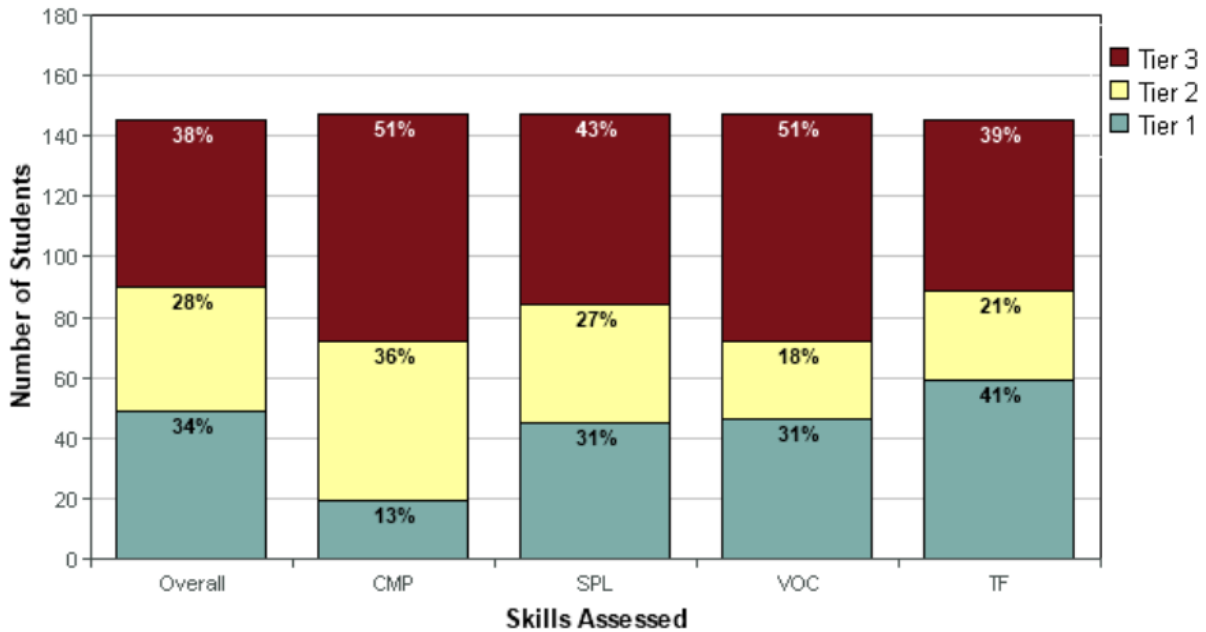
Total number of students who have been assessed using ISIP Advanced Reading in May: 323

## ISIP Advanced Reading - Skill Growth by Tier Level - Overall Reading



**Grade 9: 145/ 146 (99%) Students:  
Fall Benchmark - September**

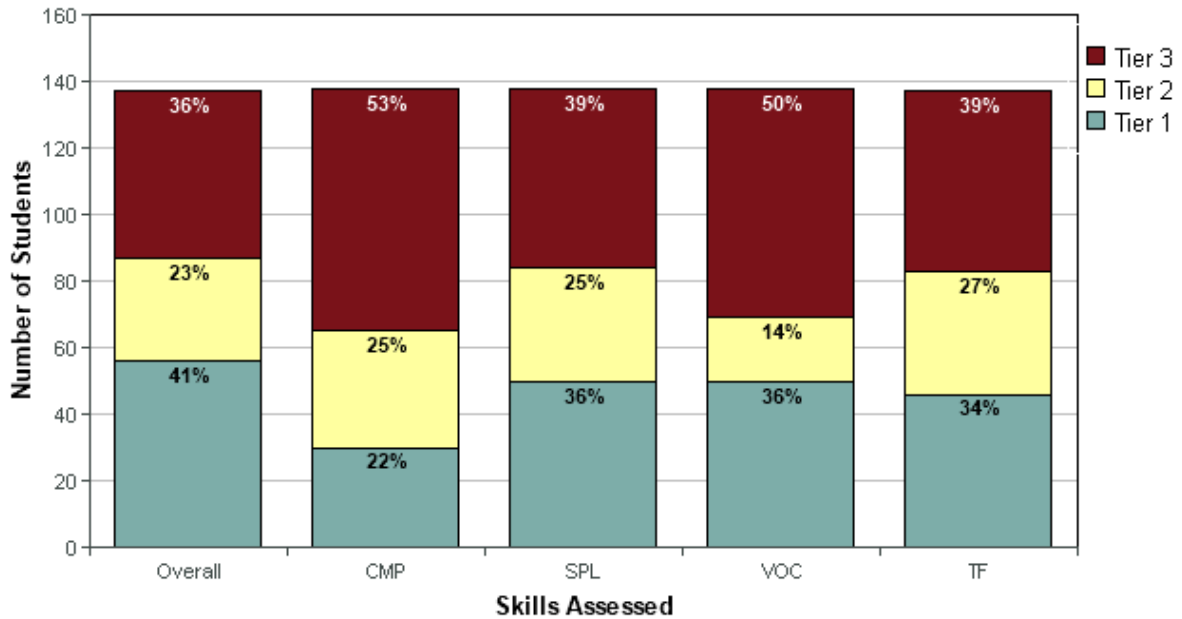
**9th Grade - September 2017**



Overall #/ (%)	CMP	SPL	VOC	TF
55/ (38%)	75/ (51%)	63/ (43%)	75/ (51%)	56/ (39%)
41/ (28%)	53/ (36%)	39/ (27%)	26/ (18%)	30/ (21%)
49/ (34%)	19/ (13%)	45/ (31%)	46/ (31%)	59/ (41%)

**Grade 9: 137/ 146 (94%) Students:  
Winter Benchmark - January**

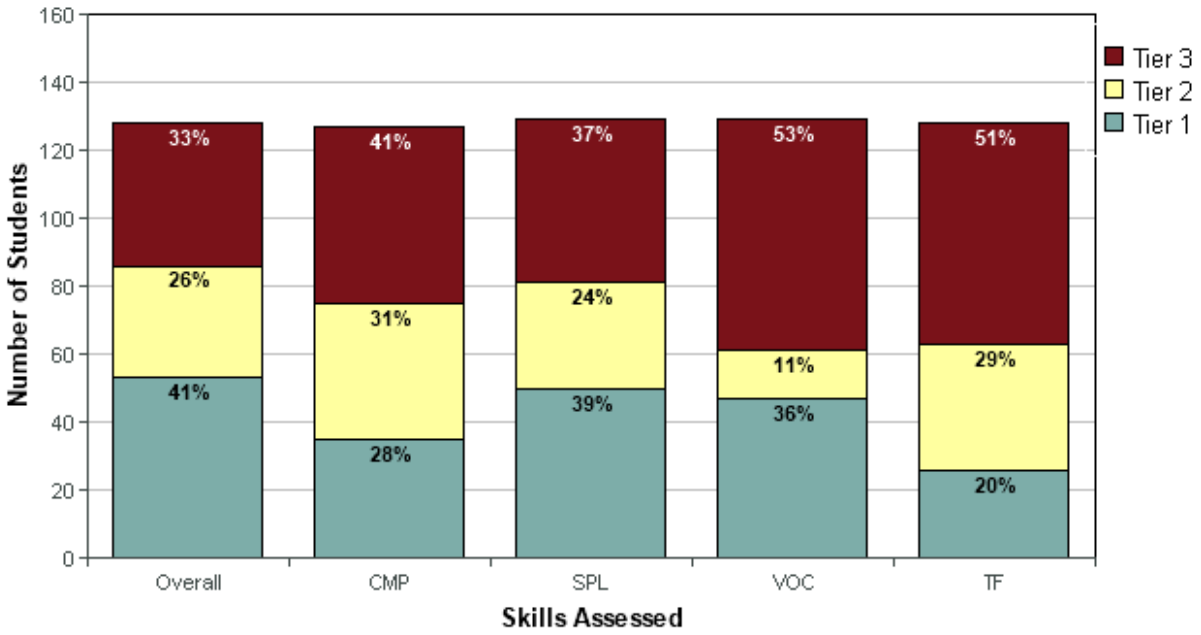
### 9th Grade - January 2018



Overall #/ (%)	CMP	SPL	VOC	TF
50/ (36%)	73/ (53%)	54/ (39%)	69/ (50%)	54/ (39%)
31/ (23%)	35/ (25%)	34/ (25%)	19/ (14%)	37/ (27%)
56/ (41%)	30/ (22%)	50/ (36%)	50/ (36%)	46/ (34%)

**Grade 9: 128/ 140 (91%) Students:  
Spring Benchmark - May**

### 9th Grade - May 2018

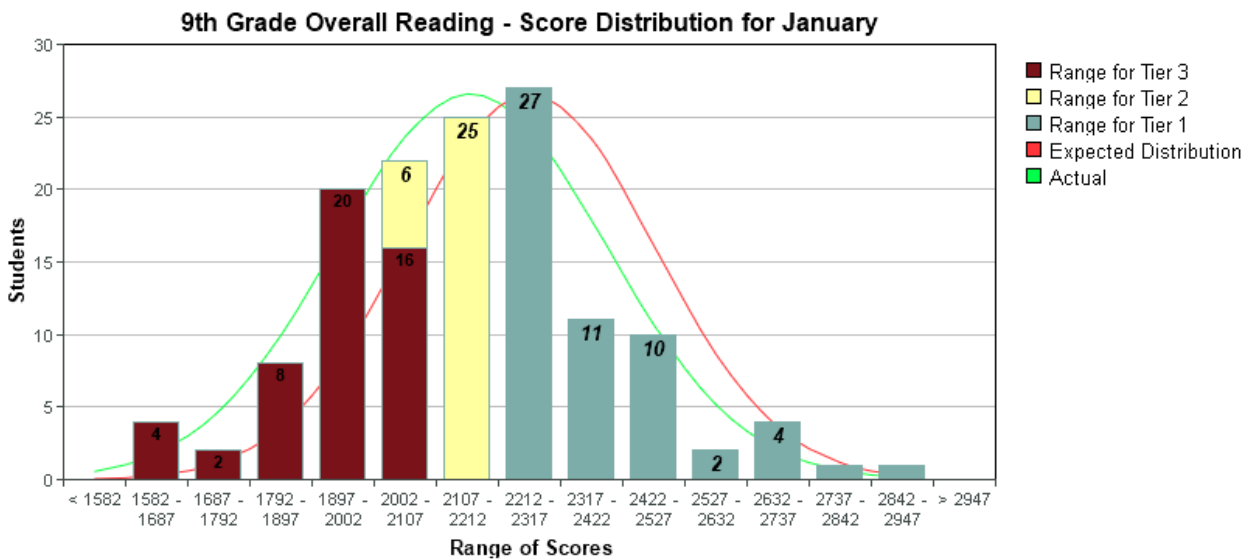
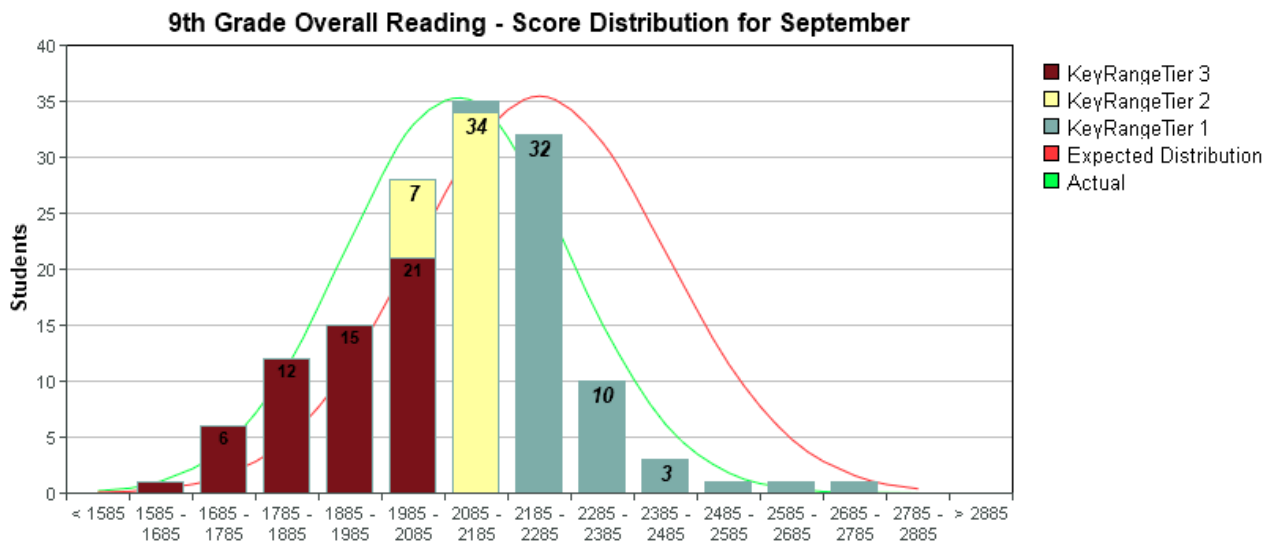


Overall #/ (%)	CMP	SPL	VOC	TF
42/ (36%)	52/ (41%)	48/ (37%)	68/ (53%)	65/ (51%)
33/ (26%)	40/ (31%)	31/ (24%)	14/ (11%)	37/ (29%)
53/ (41%)	35/ (28%)	50/ (39%)	47/ (36%)	26/ (20%)

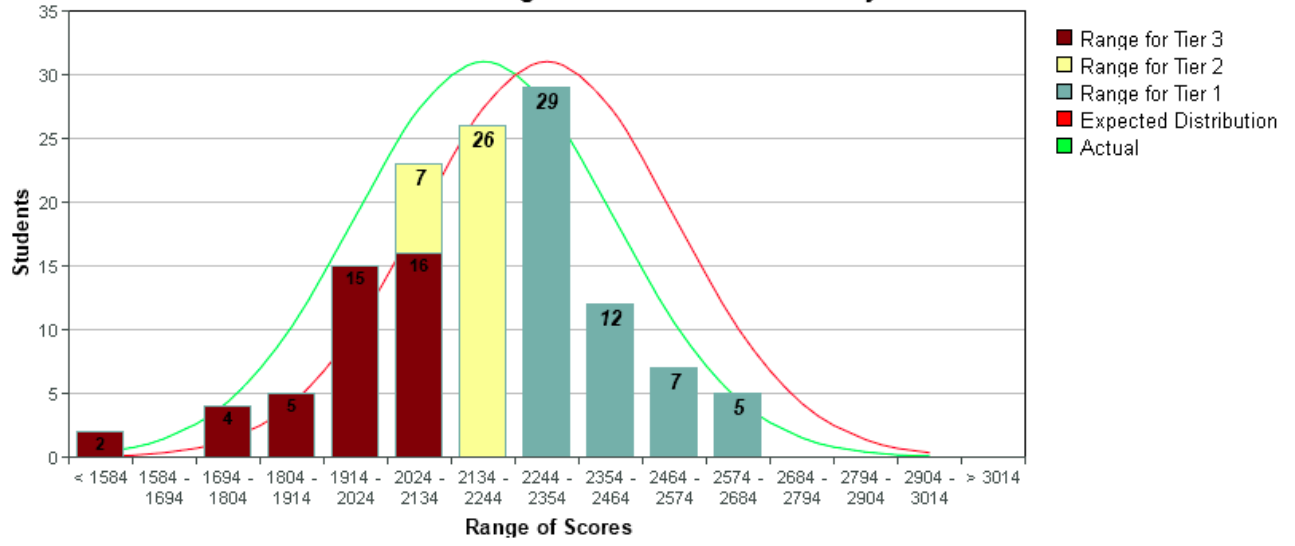
# Distribution Report

## ISIP™ Advanced Reading results for Browning High School

at Browning Public Schools - 2017/2018 School Year

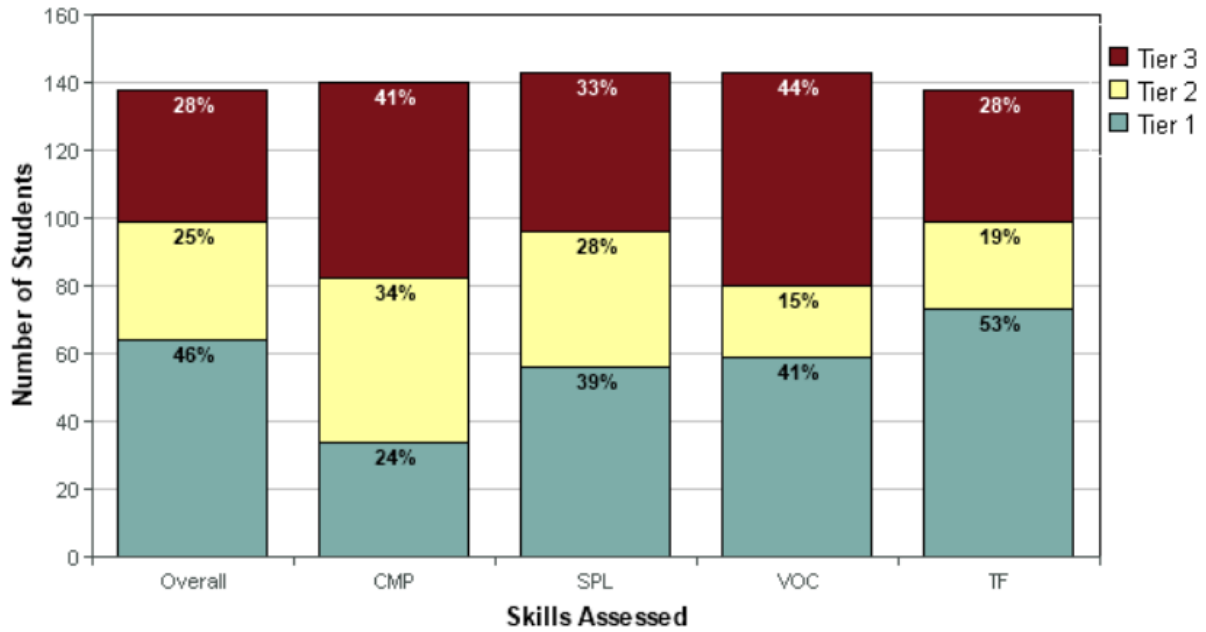


9th Grade Overall Reading - Score Distribution for May



**Grade 10: 138/ 157 (87%)Students:  
Fall Benchmark - September**

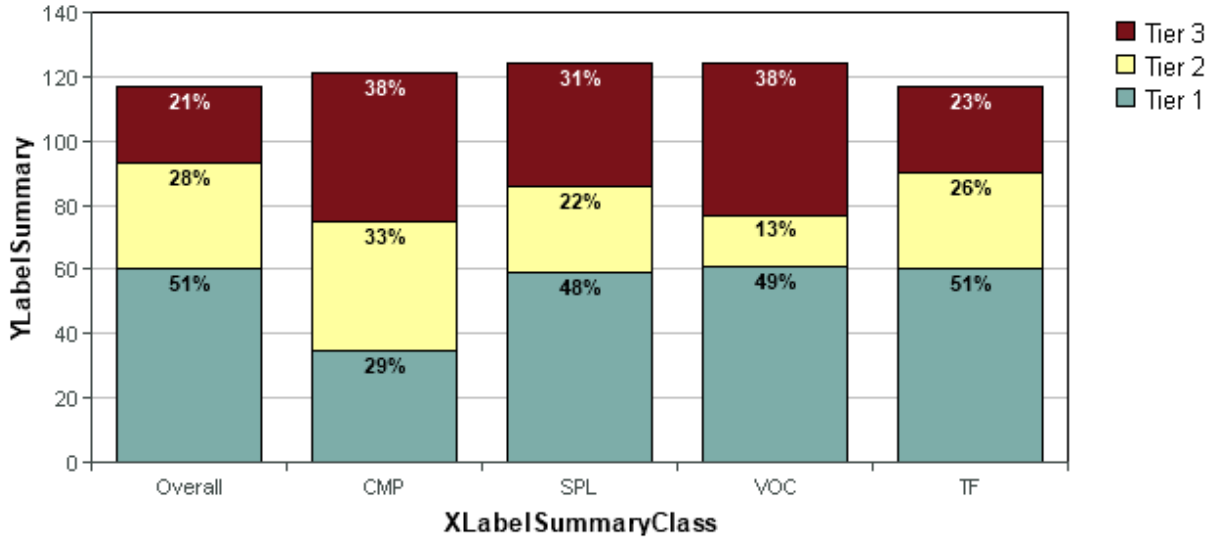
**10th Grade - September 2017**



Overall #/ (%)	CMP	SPL	VOC	TF
39/ (28%)	58/ (41%)	47/ (33%)	63/ (44%)	39/ (28%)
35/ (25%)	48/ (34%)	40/ (28%)	21/ (15%)	26/ (19%)
64/ (46%)	34/ (24%)	56/ (39%)	59/ (41%)	73/ (53%)

**Grade 10: 117/ 133 (88%)Students:  
Winter Benchmark – January**

### 10th Grade - January 2018

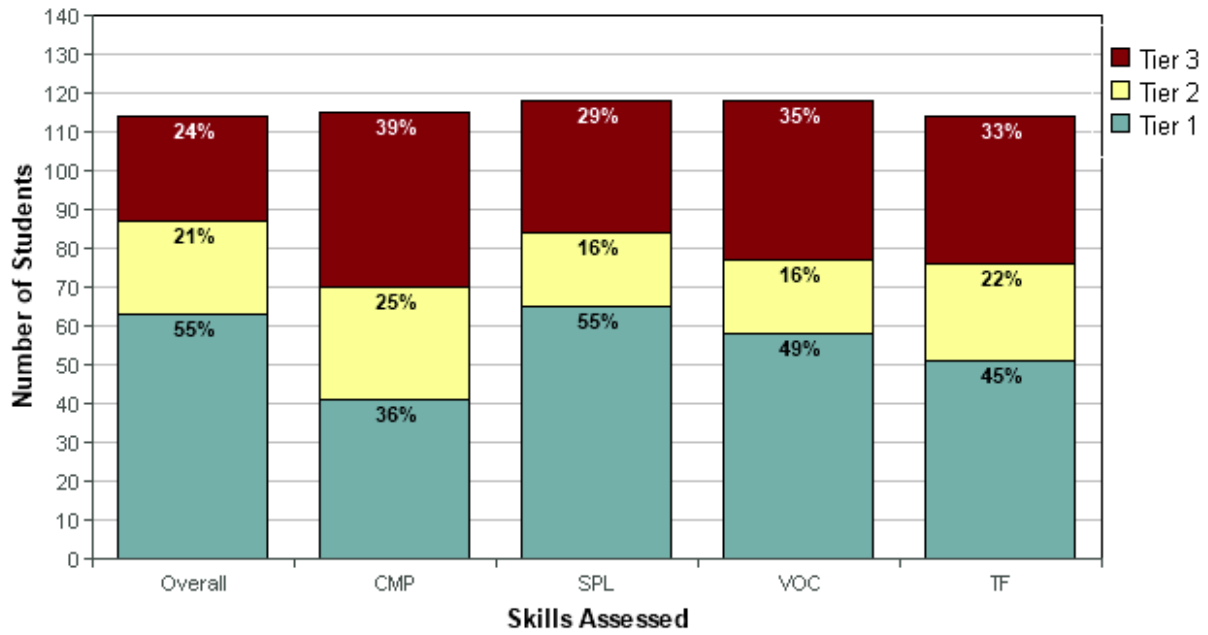


Overall #/ (%)	CMP	SPL	VOC	TF
24/ (21%)	46/ (38%)	38/ (31%)	47/ (38%)	27/ (23%)
33/ (28%)	40/ (33%)	27/ (21%)	16/ (13%)	30/ (26%)
60/ (51%)	35/ (29%)	59/ (48%)	61/ (49%)	60/ (51%)

**Grade 10: 114/ 128 (89%)Students:  
Spring Benchmark – May**



### 10th Grade - May 2018



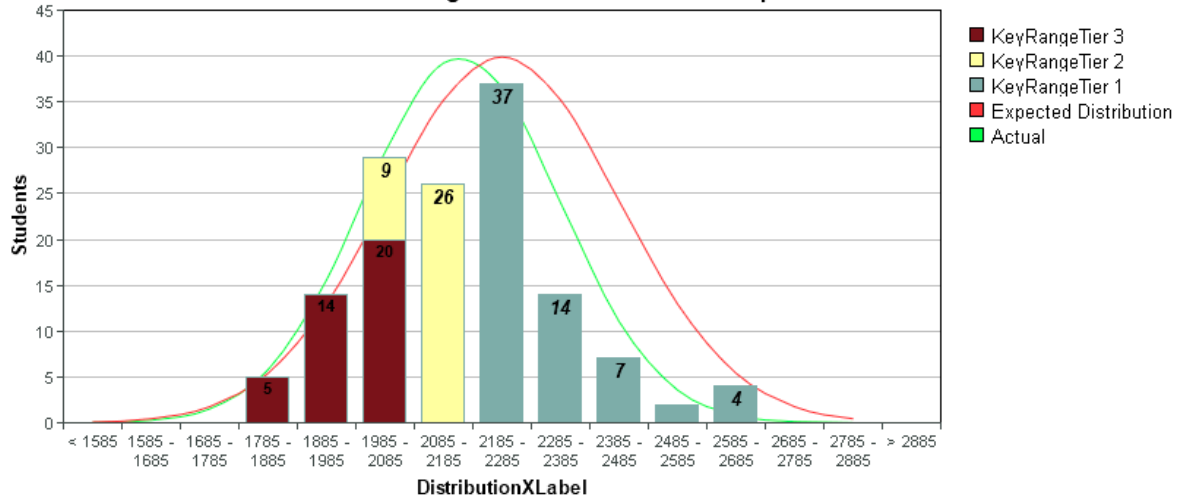
Overall #/ (%)	CMP	SPL	VOC	TF
27/ (24%)	45/ (39%)	34/ (29%)	41/ (35%)	38/ (33%)
24/ (21%)	29/ (25%)	19/ (16%)	19/ (16%)	25/ (23%)
63/ (55%)	41/ (36%)	65/ (55%)	58/ (49%)	51/ (45%)

# Distribution Report

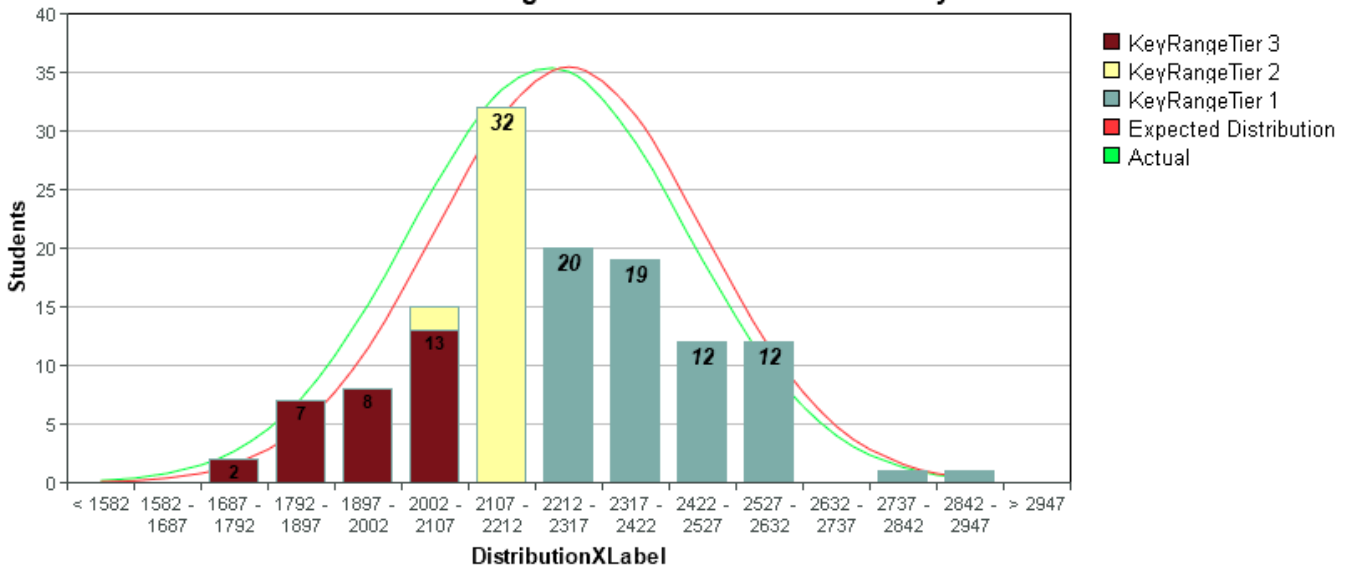
## ISIP™ Advanced Reading results for Browning High School

at Browning Public Schools - 2017/2018 School Year

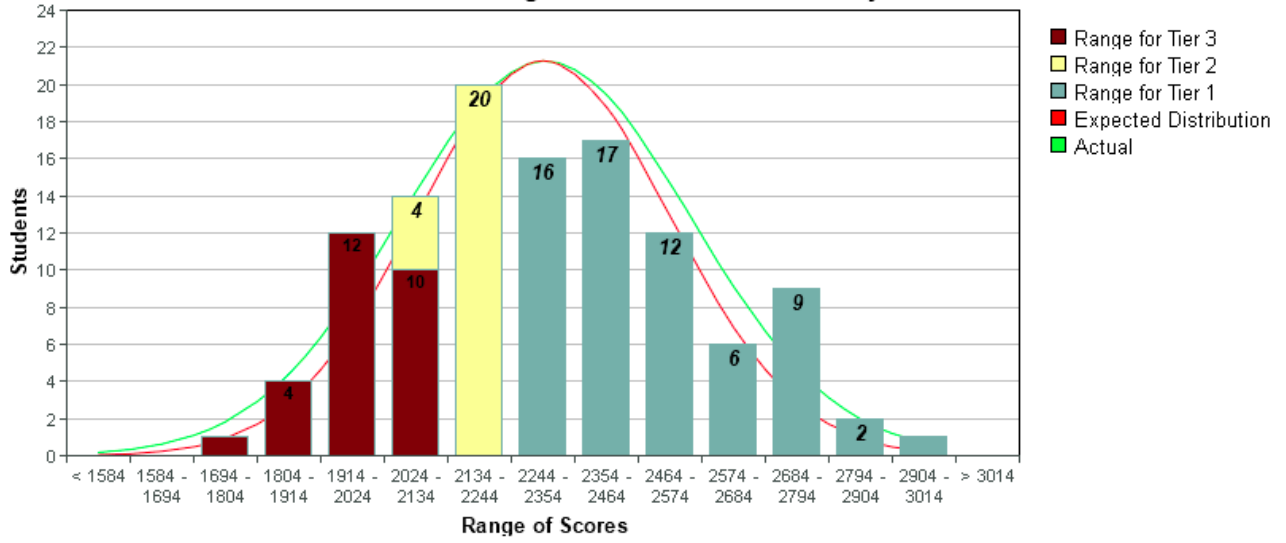
### 10th Grade Overall Reading - Score Distribution for September



### 10th Grade Overall Reading - Score Distribution for January

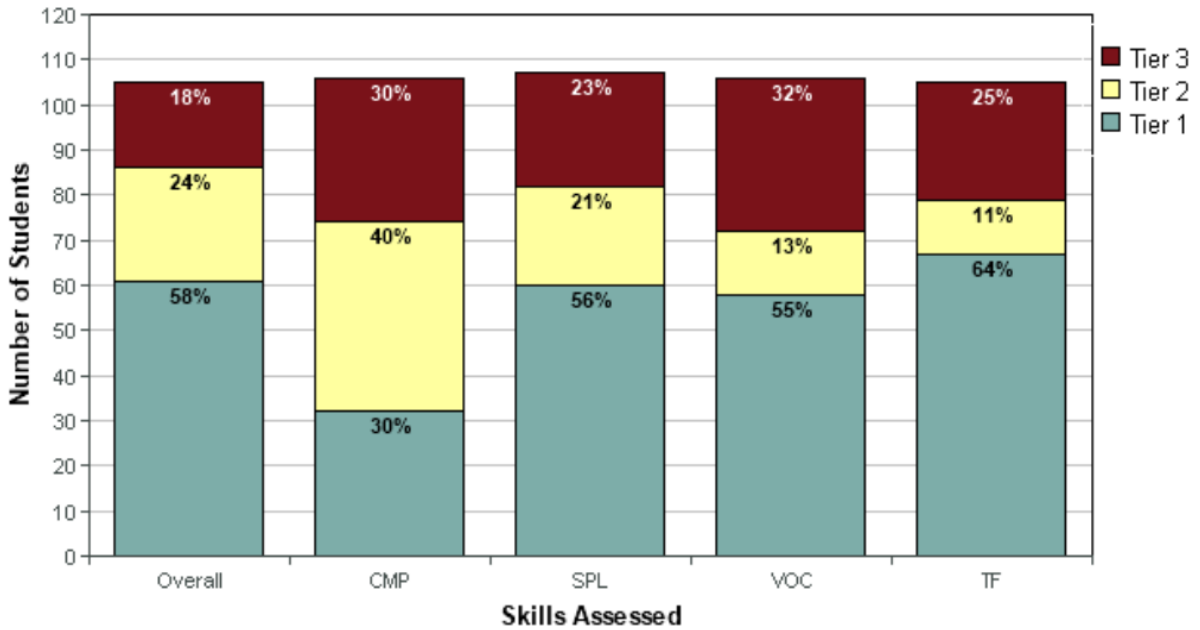


10th Grade Overall Reading - Score Distribution for May



**Grade 11: 105/ 134 (80%) Students:  
Fall Benchmark - September**

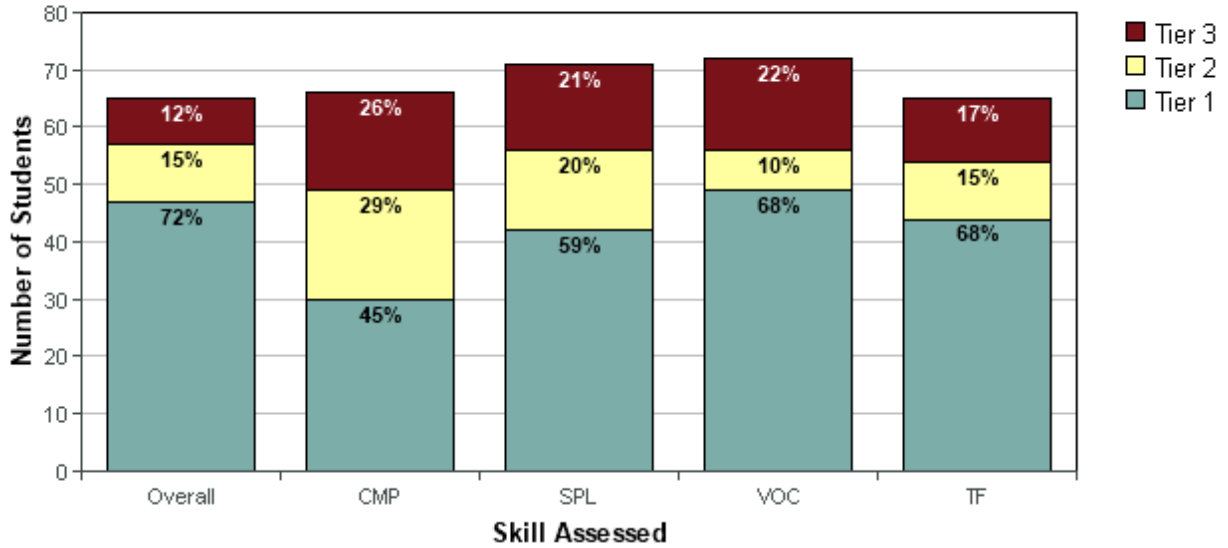
**11th Grade - September 2017**



Overall #/ (%)	CMP	SPL	VOC	TF
19/ (28%)	32/ (41%)	25/ (33%)	34/ (44%)	26/ (28%)
25/ (25%)	42/ (34%)	22/ (28%)	14/ (15%)	12/ (19%)
61/ (46%)	32/ (24%)	60/ (39%)	58/ (41%)	67/ (53%)

**Grade 11: 65/ 106 (61%) Students:  
Winter Benchmark - January**

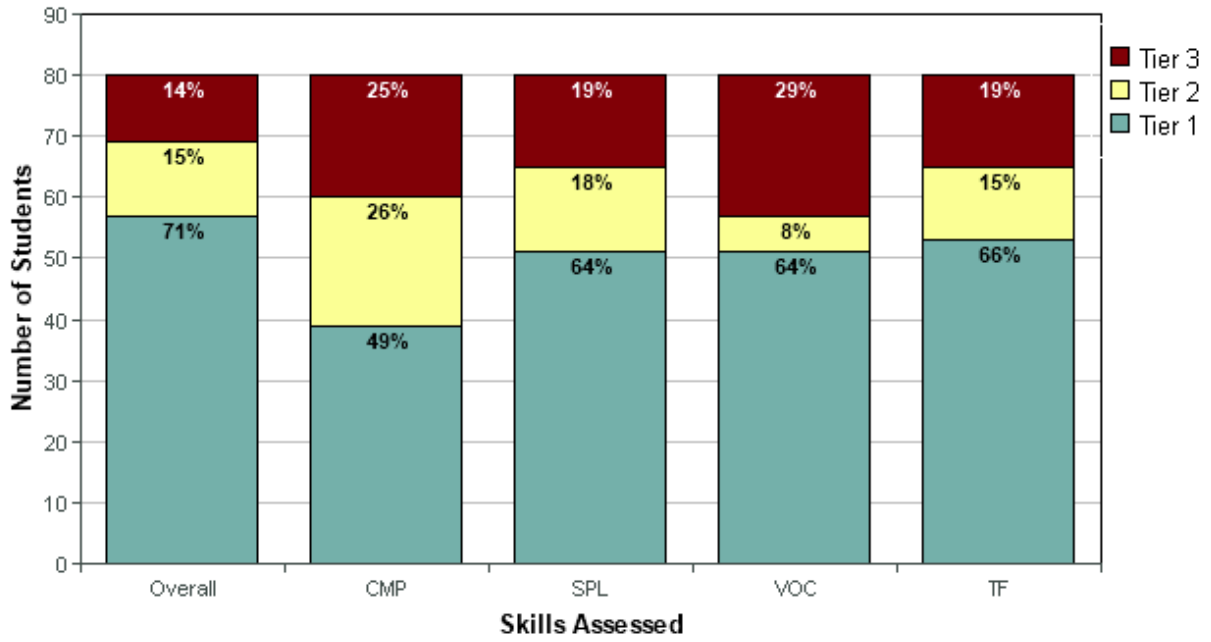
### 11th Grade - January 2018



Overall #/ (%)	CMP	SPL	VOC	TF
8/ (12%)	17/ (26%)	15/ (21%)	16/ (22%)	11/ (17%)
10/ (15%)	19/ (29%)	14/ (20%)	7/ (10%)	10/ (15%)
47/ (72%)	30/ (45%)	42/ (59%)	49/ (68%)	44/ (68%)

**Grade 11: 78/ 100 (78%) Students:  
Spring Benchmark - May**

### 11th Grade - May 2018



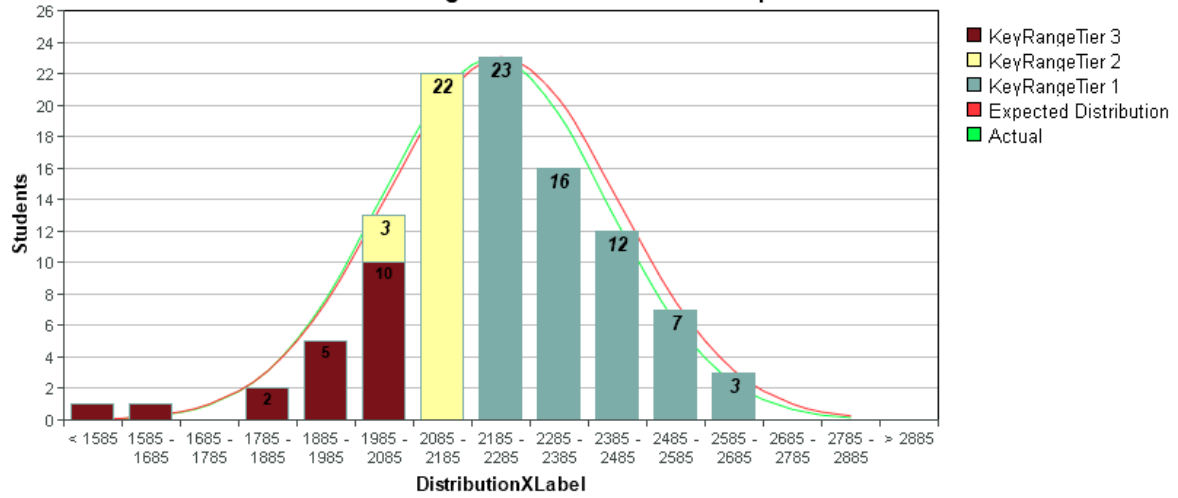
Overall #/ (%)	CMP	SPL	VOC	TF
11/ (14%)	20/ (25%)	15/ (19%)	23/ (29%)	15/ (19%)
12/ (15%)	21/ (26%)	14/ (18%)	6/ (8%)	12/ (15%)
57/ (71%)	39/ (49%)	51/ (64%)	51/ (64%)	53/ (66%)

# Distribution Report

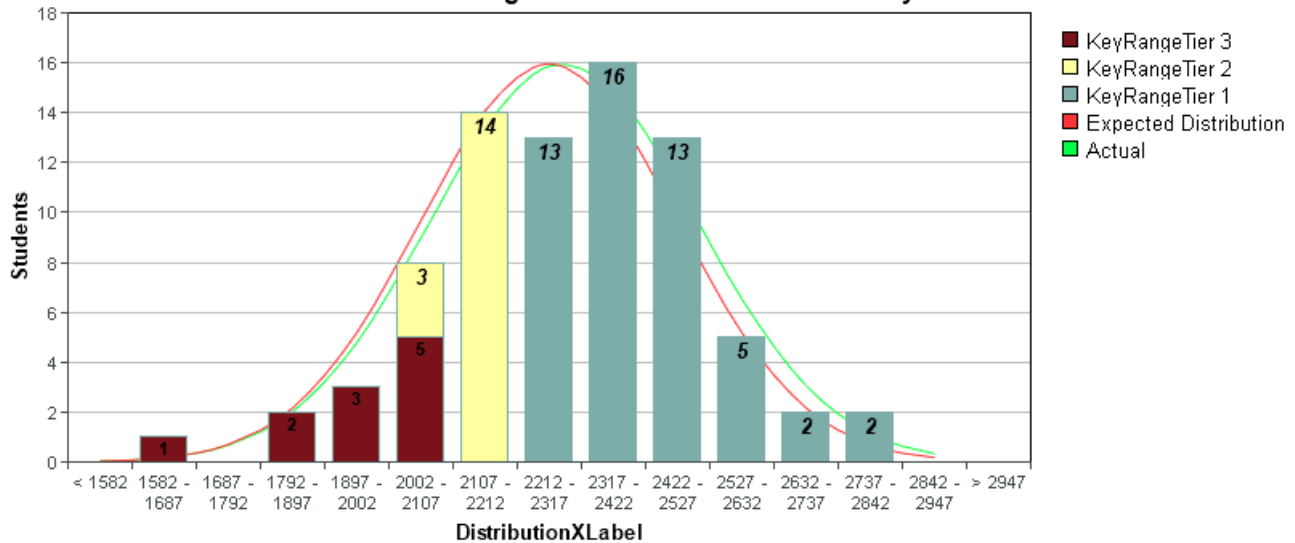
## ISIP™ Advanced Reading results for Browning High School

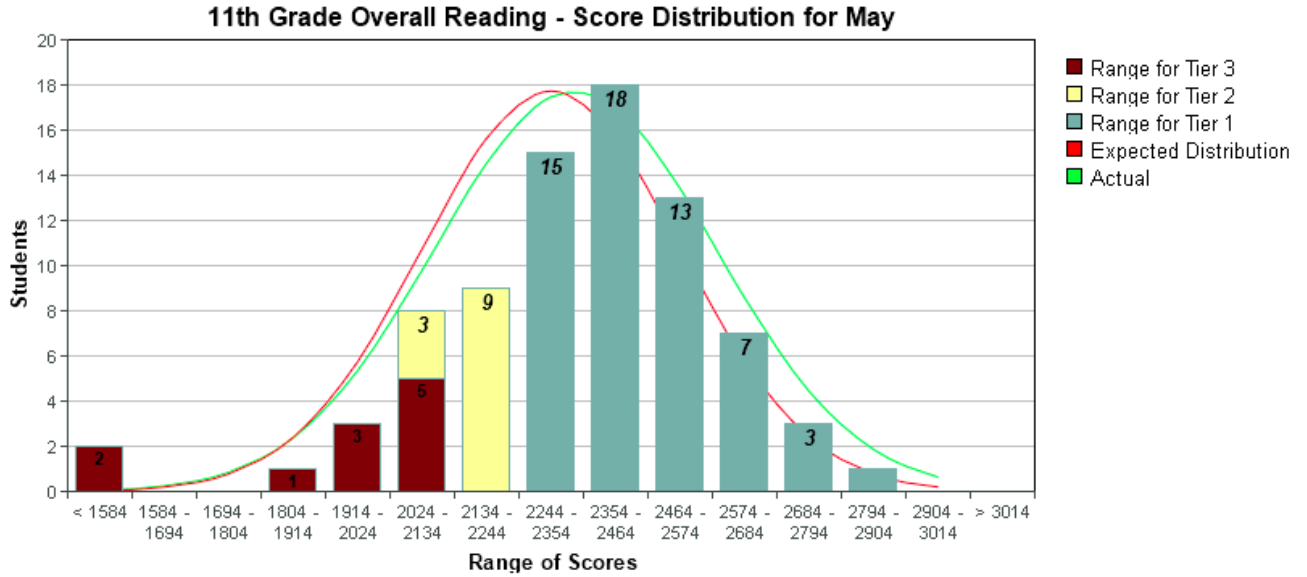
at Browning Public Schools - 2017/2018 School Year

### 11th Grade Overall Reading - Score Distribution for September



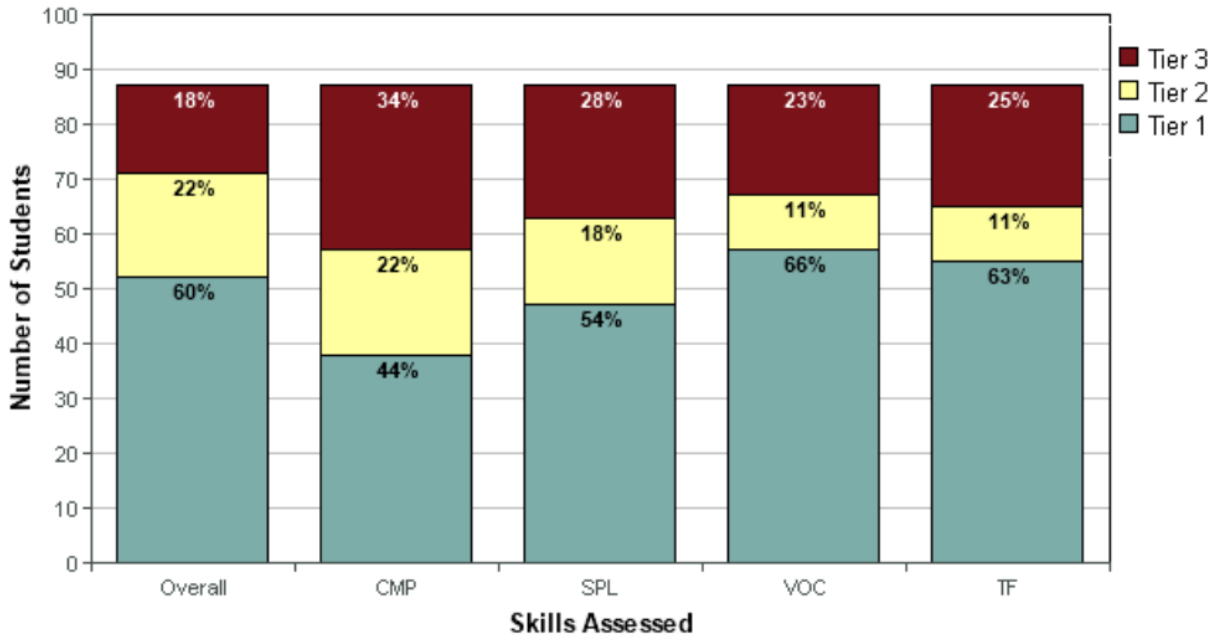
### 11th Grade Overall Reading - Score Distribution for January





**Grade 12: 87/ 138 (68%) Students:  
Fall Benchmark - September**

### 12th Grade - September 2017

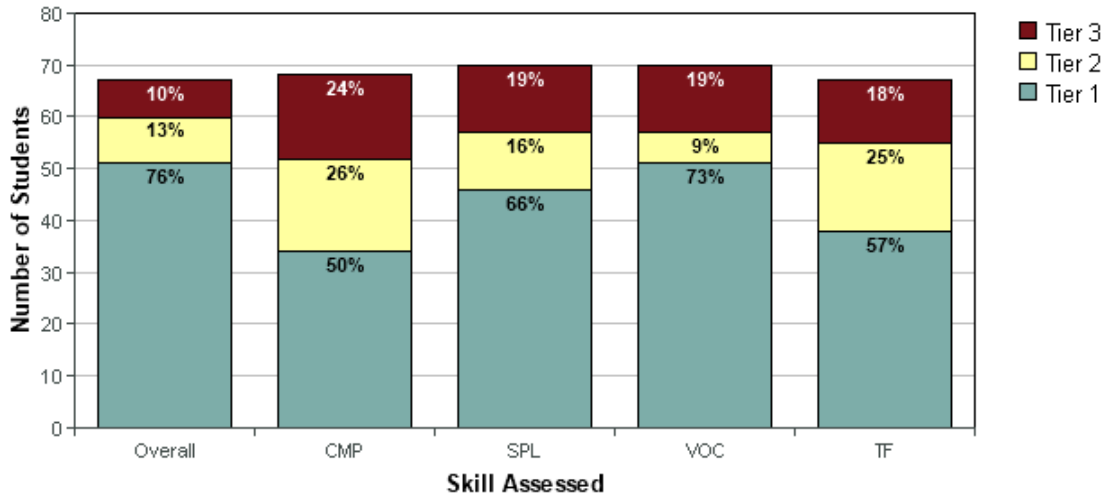


Overall #/ (%)	CMP	SPL	VOC	TF
16/ (28%)	30/ (41%)	24/ (33%)	20/ (44%)	22/ (28%)
19/ (25%)	19/ (34%)	16/ (28%)	10/ (15%)	10/ (19%)
52/ (46%)	38/ (24%)	47/ (39%)	57/ (41%)	55/ (53%)



**Grade 12: 67/ 81 (83%) Students:  
Winter Benchmark - January**

**12th Grade - January 2018**



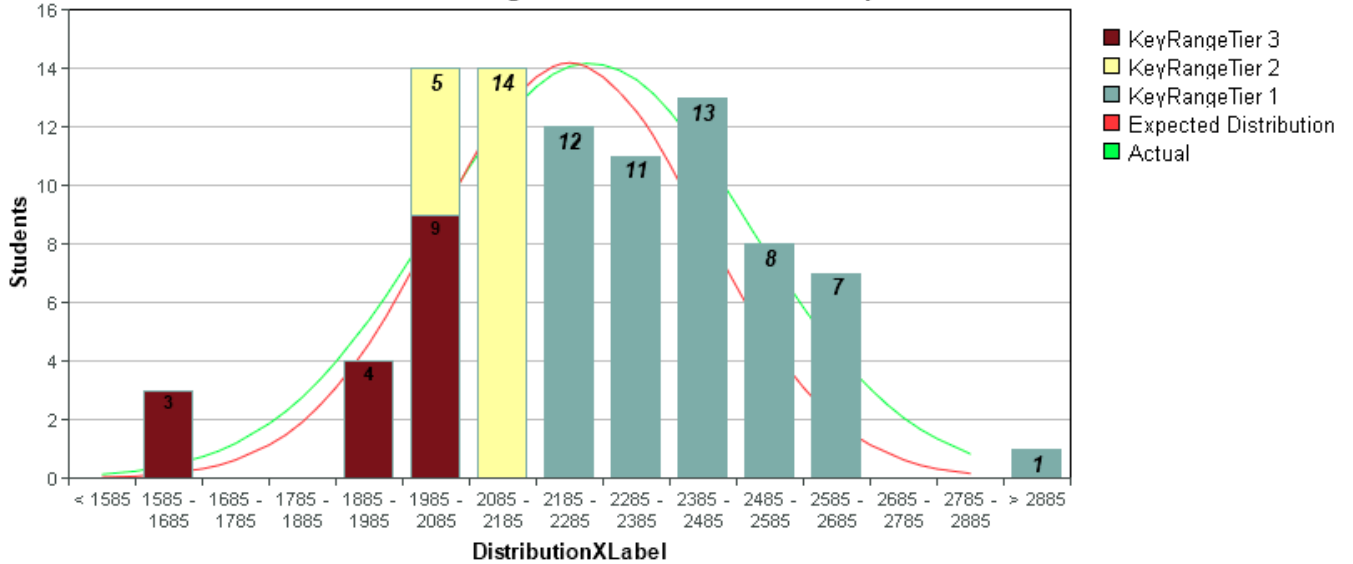
Overall #/ (%)	CMP	SPL	VOC	TF
7/ (10%)	16/ (24%)	13/ (19%)	13/ (19%)	12/ (18%)
9/ (13%)	18/ (26%)	11/ (16%)	6/ (9%)	17/ (25%)
51/ (76%)	34/ (50%)	46/ (66%)	51/ (73%)	38/ (57%)

# Distribution Report

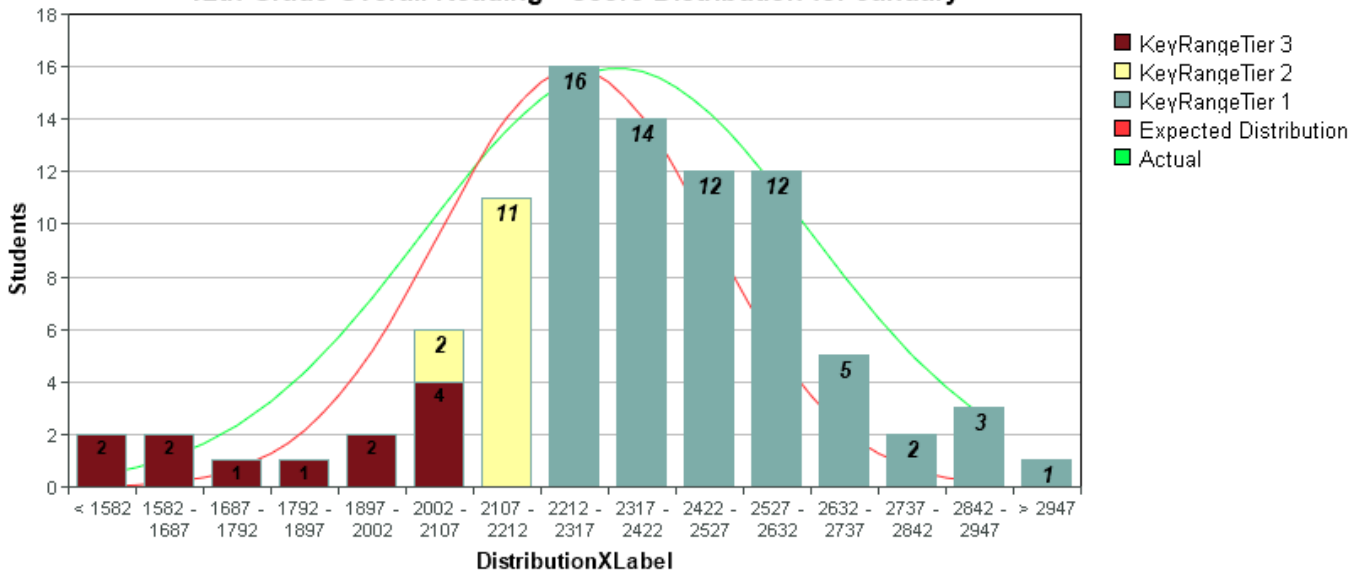
## ISIP™ Advanced Reading results for Browning High School

at Browning Public Schools - 2017/2018 School Year

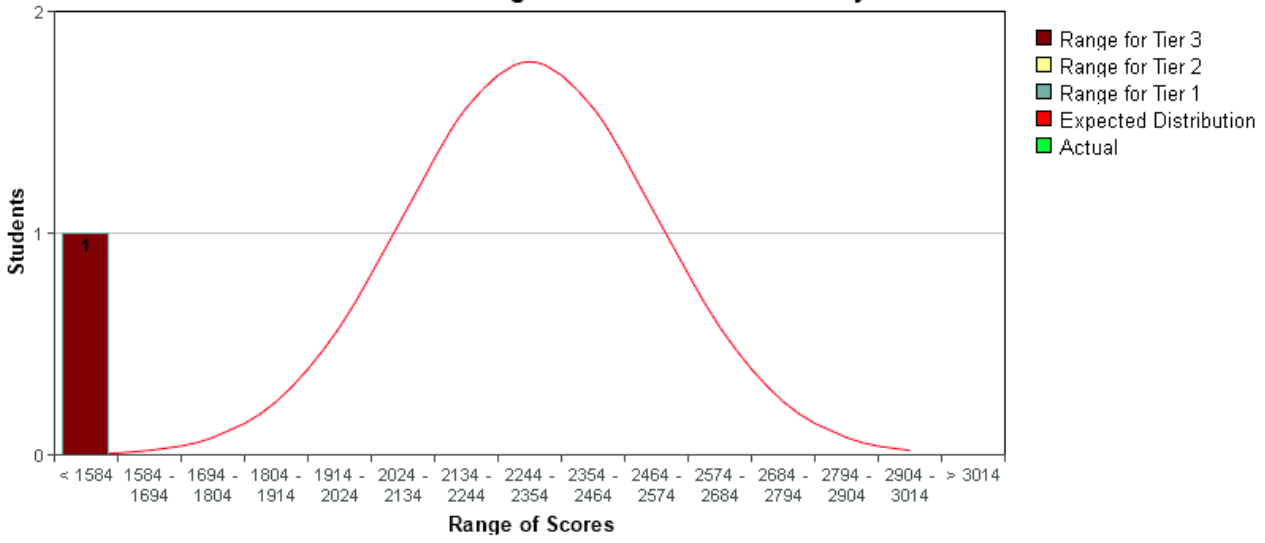
### 12th Grade Overall Reading - Score Distribution for September



### 12th Grade Overall Reading - Score Distribution for January



12th Grade Overall Reading - Score Distribution for May



# Star Math

## Grade 9:

### Browning High School - Growth

Grade	School Year Aug 1 - Sep 30 (Fall)	Percent of Students by District Benchmark Category	Total Students	70+ PR	45-69 PR	25-44 PR	1-24 PR
Grade 9	2017 - 2018 Grade 9		135	4% 6	16% 21	22% 30	58% 78
	2016 - 2017 Grade 8		123	5% 6	16% 20	24% 29	55% 68
	2015 - 2016 Grade 7		114	8% 9	23% 26	23% 26	46% 53



## Screening Report District Benchmark

1

Printed Wednesday, October 4, 2017 12:50:12 PM

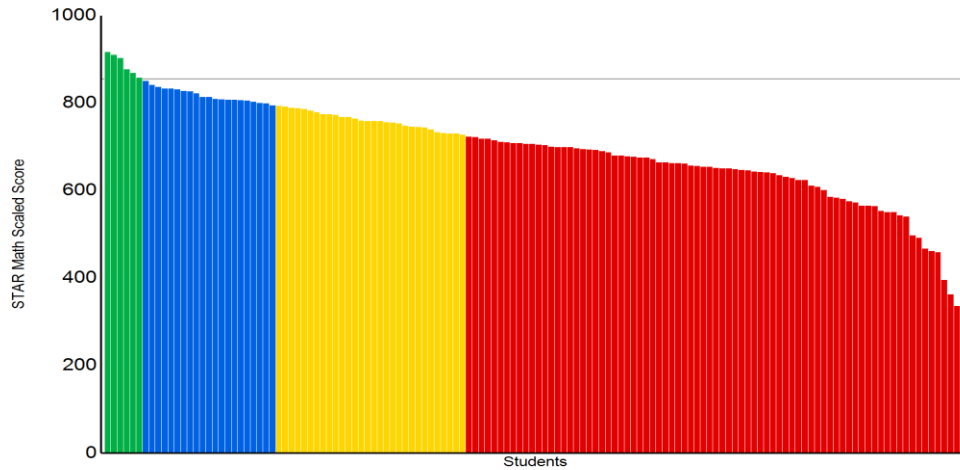
School: Browning High School

Reporting Period: 9/1/2017 - 9/29/2017  
(Fall)

### Report Options

Reporting Parameter Group: All Demographics [Default]

### Grade: 9



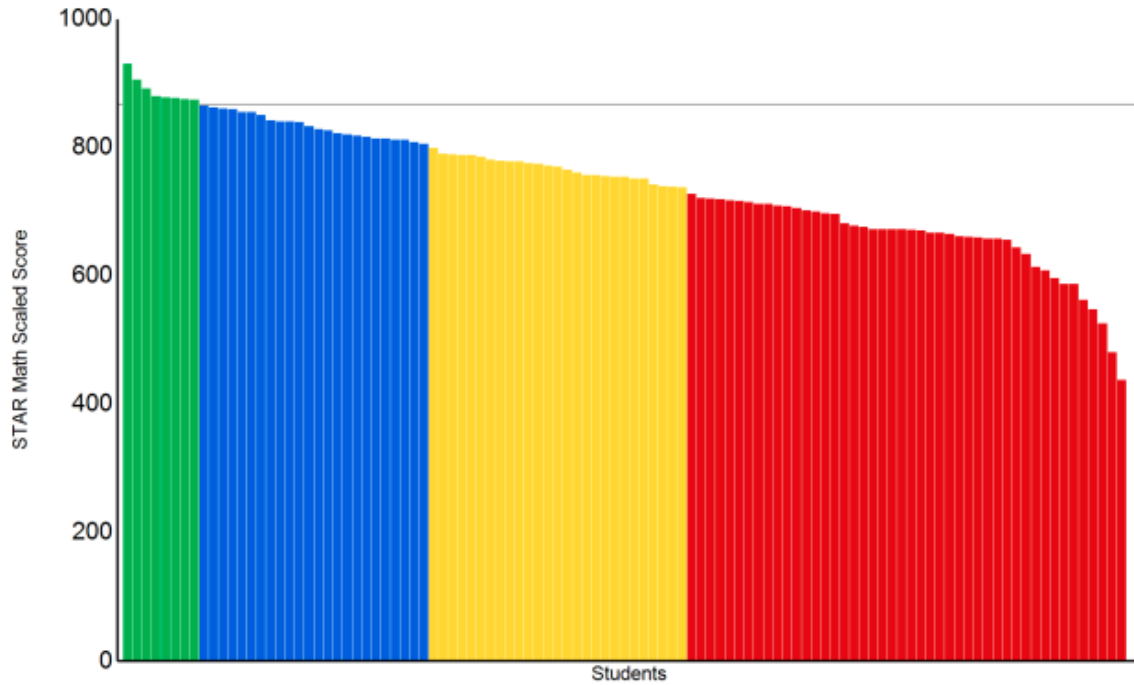
Categories / Levels	Benchmark		Students	
	Scaled Score	Percentile Rank	Number	Percent
<b>At/Above Benchmark</b>				
■ At/Above Benchmark	At/Above 856 SS	At/Above 70 PR	6	4%
Category Total			6	4%
<b>Below Benchmark</b>				
■ On Watch	Below 856 SS	Below 70 PR	21	16%
■ Intervention	Below 795 SS	Below 45 PR	30	22%
■ Urgent Intervention	Below 725 SS	Below 25 PR	78	58%
Category Total			129	96%
<b>Students Tested</b>			135	

**Key questions to ask based on this and other information:** Are you satisfied with the number of students at the highest level of performance? Next, consider the level or score that indicates proficiency. Which students just above proficiency are you "worried about" and what support within or beyond core instruction is warranted? What support is needed for students just below? Do all students represented by your lowest level need urgent intervention?

**Report Options**

Reporting Parameter Group: All Demographics [Default]

**Grade: 9**



Categories / Levels	Benchmark		Students	
	Scaled Score	Percentile Rank	Number	Percent
<b>At/Above Benchmark</b>				
■ At/Above Benchmark	At/Above 868 SS	At/Above 70 PR	8	8%
Category Total			8	8%
<b>Below Benchmark</b>				
■ On Watch	Below 868 SS	Below 70 PR	24	23%
■ Intervention	Below 803 SS	Below 45 PR	27	26%
■ Urgent Intervention	Below 738 SS	Below 25 PR	46	44%
Category Total			97	92%
<b>Students Tested</b>			<b>105</b>	

**Key questions to ask based on this and other information:** Are you satisfied with the number of students at the highest level of performance? Next, consider the level or score that indicates proficiency. Which students just above proficiency are you "worried about" and what support within or beyond core instruction is warranted? What support is needed for students just below? Do all students represented by your lowest level need urgent intervention?

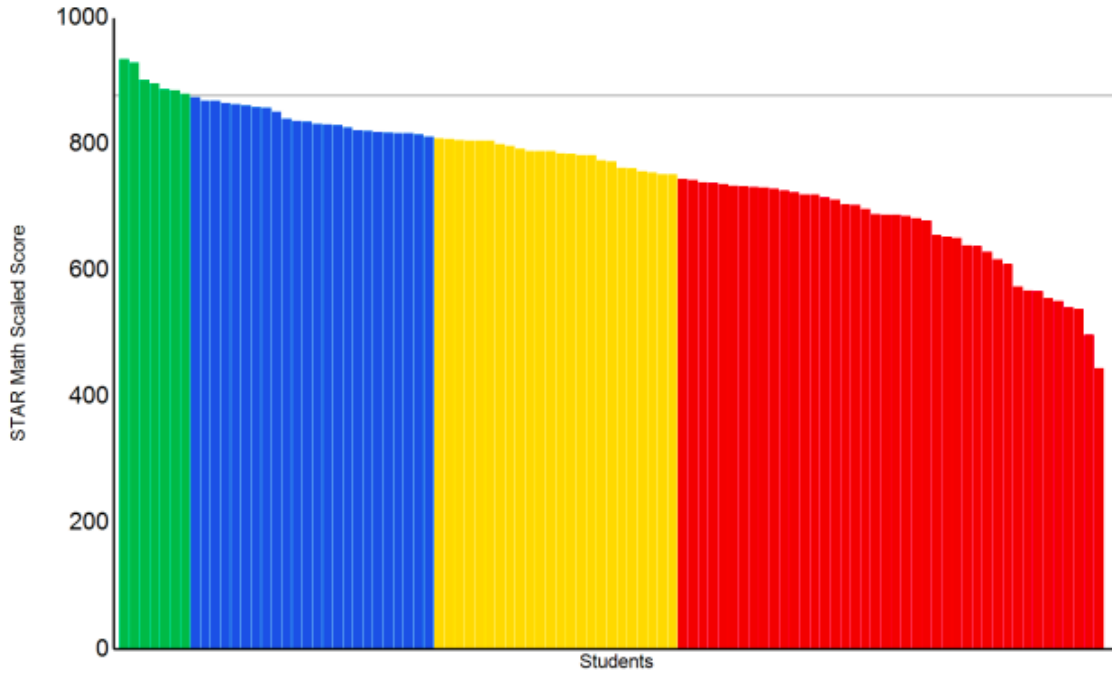
**Browning High School - Growth**

Grade	School Year Apr 1 - May 31 (Spring)	Percent of Students by District Benchmark Category	Total Students	70+ PR	45-69 PR	25-44 PR	1-24 PR
Grade 9	2017 - 2018 Grade 9		99	7% 7	24% 24	25% 25	43% 43
	2016 - 2017 Grade 8		122	3% 4	20% 25	22% 27	54% 66
	2015 - 2016 Grade 7		107	8% 9	12% 13	24% 26	55% 59

**Report Options**

Reporting Parameter Group: All Demographics [Default]

**Grade: 9**



Categories / Levels	Benchmark		Students	
	Scaled Score	Percentile Rank	Number	Percent
<b>At/Above Benchmark</b>				
■ At/Above Benchmark	At/Above 877 SS	At/Above 70 PR	7	7%
Category Total			7	7%
<b>Below Benchmark</b>				
■ On Watch	Below 877 SS	Below 70 PR	24	25%
■ Intervention	Below 811 SS	Below 45 PR	24	25%
■ Urgent Intervention	Below 749 SS	Below 25 PR	42	43%
Category Total			90	93%
<b>Students Tested</b>			97	

# Grade 10:

## Browning High School - Growth

Grade	School Year Aug 1 - Sep 30 (Fall)	Percent of Students by District Benchmark Category	Total Students	70+ PR	45-69 PR	25-44 PR	1-24 PR
Grade 10	2017 - 2018 Grade 10		140	12% 17	20% 28	26% 37	41% 58
	2016 - 2017 Grade 9		137	7% 10	20% 27	22% 30	51% 70
	2015 - 2016 Grade 8		125	7% 9	14% 18	34% 43	44% 55



## Screening Report District Benchmark

1

Printed Wednesday, October 4, 2017 12:57:30 PM

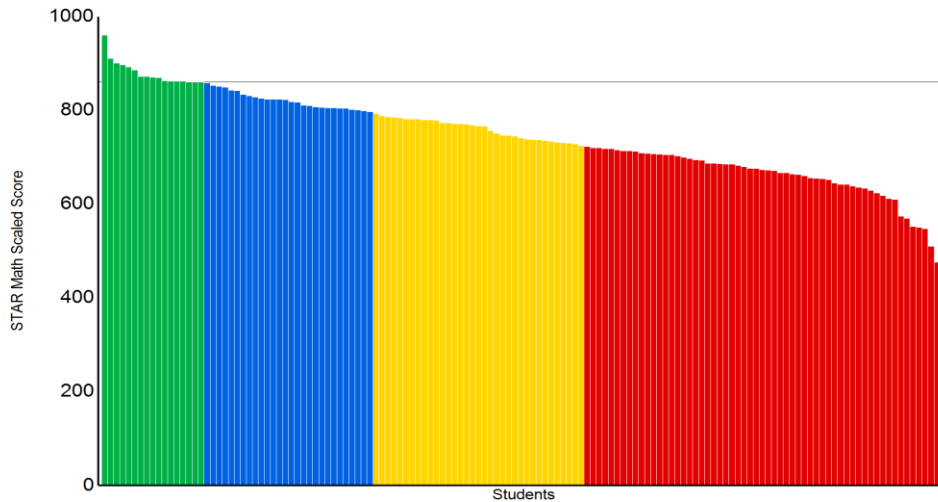
School: Browning High School

Reporting Period: 9/1/2017 - 9/29/2017  
(Fall)

### Report Options

Reporting Parameter Group: All Demographics [Default]

### Grade: 10



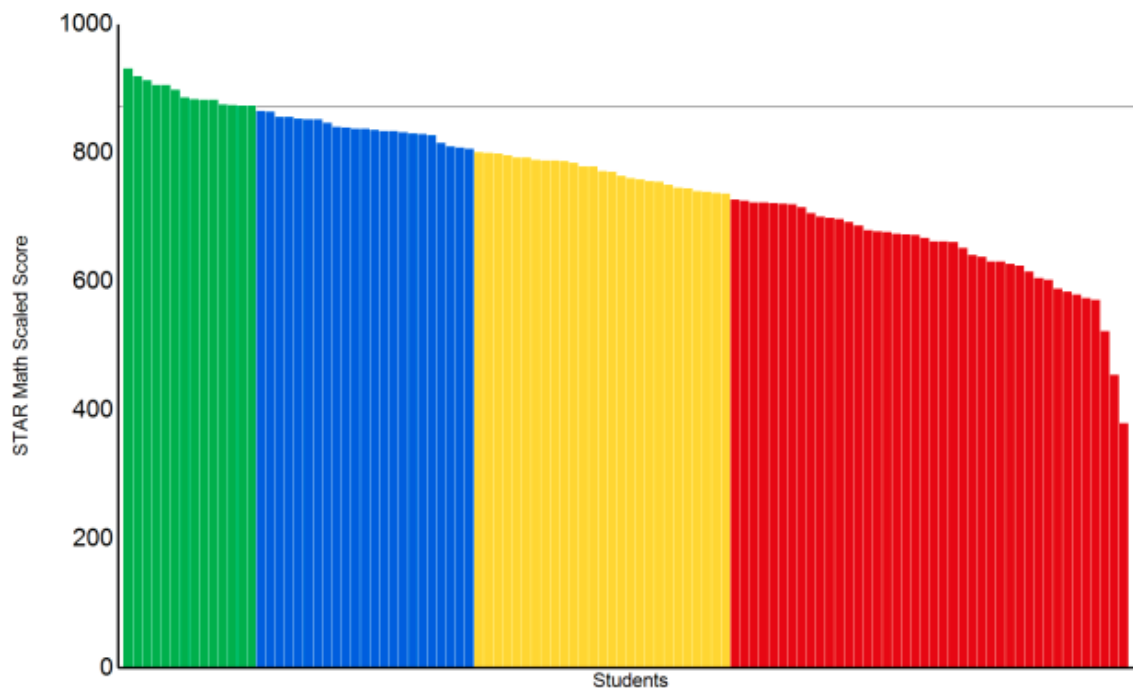
Categories / Levels	Benchmark		Students	
	Scaled Score	Percentile Rank	Number	Percent
<b>At/Above Benchmark</b>				
■ At/Above Benchmark	At/Above 860 SS	At/Above 70 PR	17	12%
Category Total			17	12%
<b>Below Benchmark</b>				
■ On Watch	Below 860 SS	Below 70 PR	28	20%
■ Intervention	Below 796 SS	Below 45 PR	35	25%
■ Urgent Intervention	Below 725 SS	Below 25 PR	59	42%
Category Total			122	88%
<b>Students Tested</b>			139	

**Key questions to ask based on this and other information:** Are you satisfied with the number of students at the highest level of performance? Next, consider the level or score that indicates proficiency. Which students just above proficiency are you "worried about" and what support within or beyond core instruction is warranted? What support is needed for students just below? Do all students represented by your lowest level need urgent intervention?

**Report Options**

Reporting Parameter Group: All Demographics [Default]

**Grade: 10**



Categories / Levels	Benchmark		Students	
	Scaled Score	Percentile Rank	Number	Percent
<b>At/Above Benchmark</b>				
■ At/Above Benchmark	At/Above 871 SS	At/Above 70 PR	14	13%
Category Total			14	13%
<b>Below Benchmark</b>				
■ On Watch	Below 871 SS	Below 70 PR	23	22%
■ Intervention	Below 804 SS	Below 45 PR	27	25%
■ Urgent Intervention	Below 736 SS	Below 25 PR	42	40%
Category Total			92	87%
<b>Students Tested</b>			106	

**Key questions to ask based on this and other information:** Are you satisfied with the number of students at the highest level of performance? Next, consider the level or score that indicates proficiency. Which students just above proficiency are you "worried about" and what support within or beyond core instruction is warranted? What support is needed for students just below? Do all students represented by your lowest level need urgent intervention?



**Browning High School - Growth**

Grade	School Year Apr 1 - May 31 (Spring)	Percent of Students by District Benchmark Category	Total Students	70+ PR	45-69 PR	25-44 PR	1-24 PR
Grade 10	2017 - 2018 Grade 10		101	10% 10	19% 19	29% 29	43% 43
	2016 - 2017 Grade 9		97	10% 10	23% 22	18% 17	49% 48
	2015 - 2016 Grade 8		127	9% 11	13% 17	24% 30	54% 69

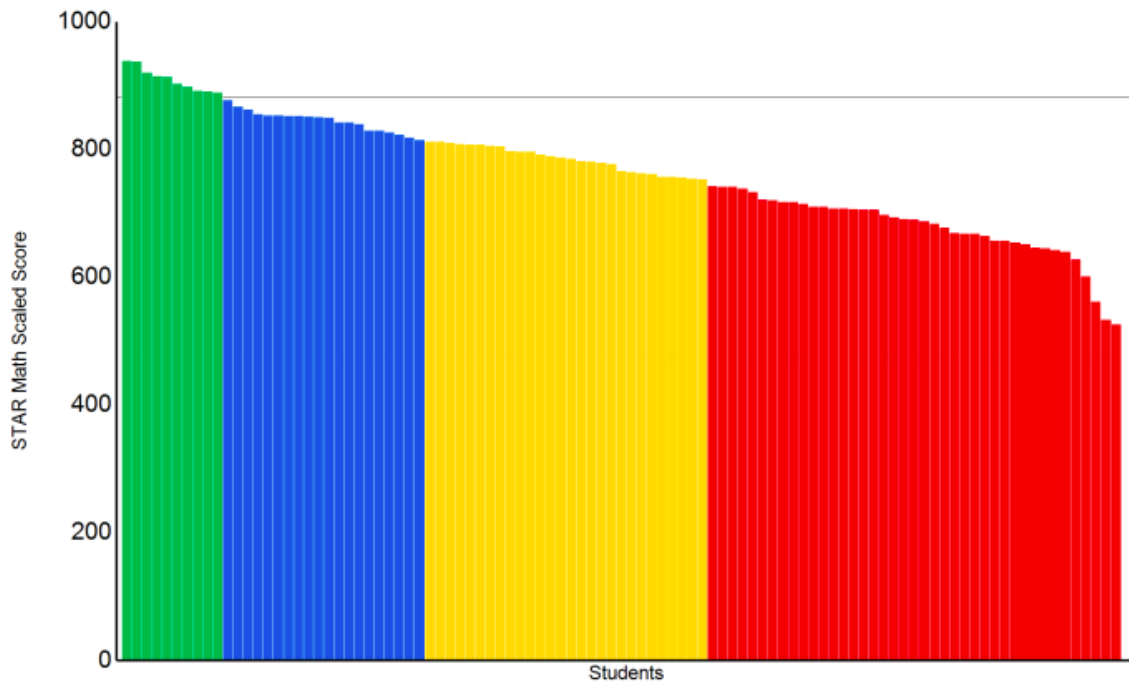
School: Browning High School

Reporting Period: 5/1/2018 - 5/31/2018  
(Spring)

**Report Options**

Reporting Parameter Group: All Demographics [Default]

**Grade: 10**



Categories / Levels	Benchmark		Students	
	Scaled Score	Percentile Rank	Number	Percent
<b>At/Above Benchmark</b>				
■ At/Above Benchmark	At/Above 882 SS	At/Above 70 PR	10	10%
Category Total			10	10%
<b>Below Benchmark</b>				
■ On Watch	Below 882 SS	Below 70 PR	20	20%
■ Intervention	Below 814 SS	Below 45 PR	28	28%
■ Urgent Intervention	Below 749 SS	Below 25 PR	41	41%
Category Total			89	90%
<b>Students Tested</b>			99	

# Grade 11:

## Browning High School - Growth

Grade	School Year Aug 1 - Sep 30 (Fall)	Percent of Students by District Benchmark Category	Total Students	70+ PR	45-69 PR	25-44 PR	1-24 PR
Grade 11	2017 - 2018 Grade 11		109	8% 9	20% 22	28% 31	43% 47
	2016 - 2017 Grade 10		102	12% 12	24% 24	23% 23	42% 43
	2015 - 2016 Grade 9		-	-	-	-	-



## Screening Report District Benchmark

1

Printed Wednesday, October 4, 2017 12:58:24 PM

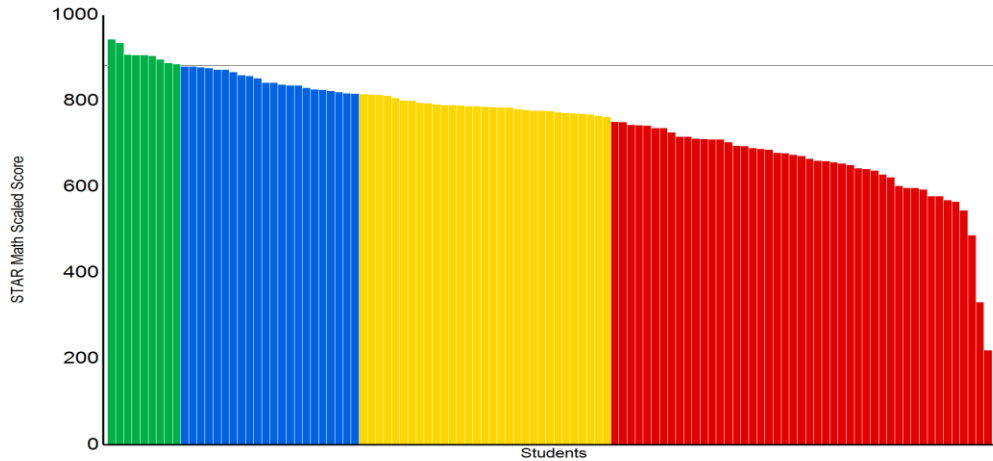
School: Browning High School

Reporting Period: 9/1/2017 - 9/29/2017  
(Fall)

### Report Options

Reporting Parameter Group: All Demographics [Default]

### Grade: 11



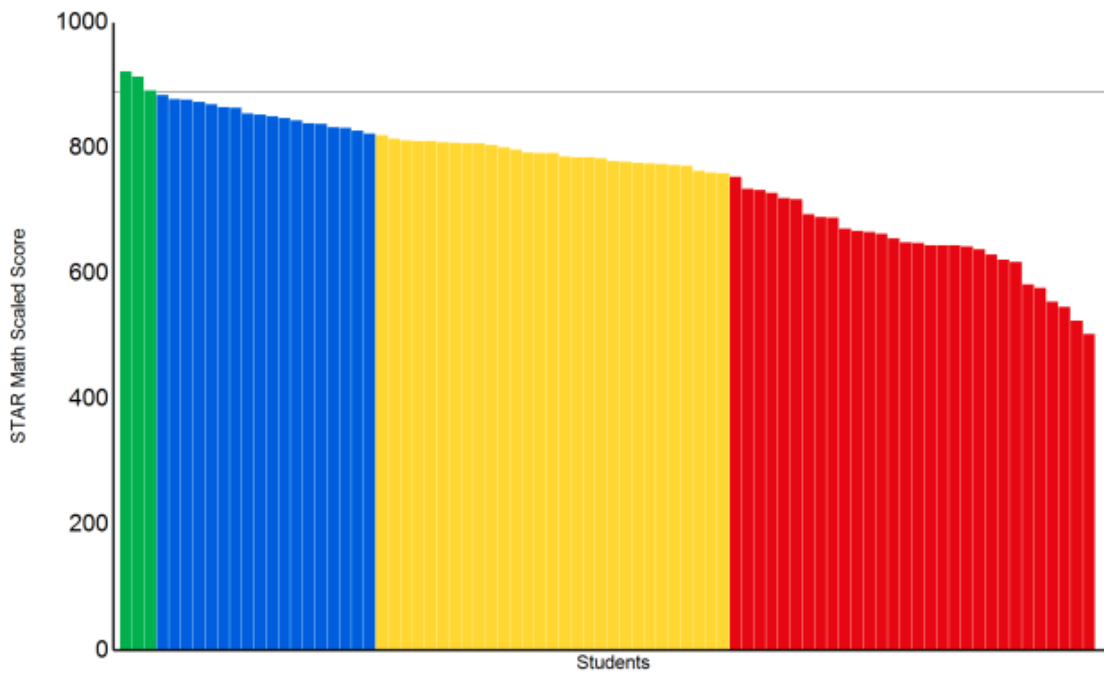
Categories / Levels	Benchmark		Students	
	Scaled Score	Percentile Rank	Number	Percent
<b>At/Above Benchmark</b>				
■ At/Above Benchmark	At/Above 882 SS	At/Above 70 PR	9	8%
Category Total			9	8%
<b>Below Benchmark</b>				
■ On Watch	Below 882 SS	Below 70 PR	22	20%
■ Intervention	Below 817 SS	Below 45 PR	31	28%
■ Urgent Intervention	Below 754 SS	Below 25 PR	47	43%
Category Total			100	92%
<b>Students Tested</b>			109	

**Key questions to ask based on this and other information:** Are you satisfied with the number of students at the highest level of performance? Next, consider the level or score that indicates proficiency. Which students just above proficiency are you "worried about" and what support within or beyond core instruction is warranted? What support is needed for students just below? Do all students represented by your lowest level need urgent intervention?

**Report Options**

Reporting Parameter Group: All Demographics [Default]

**Grade: 11**



Categories / Levels	Benchmark		Students	
	Scaled Score	Percentile Rank	Number	Percent
<b>At/Above Benchmark</b>				
■ At/Above Benchmark	At/Above 889 SS	At/Above 70 PR	3	4%
Category Total			3	4%
<b>Below Benchmark</b>				
■ On Watch	Below 889 SS	Below 70 PR	18	23%
■ Intervention	Below 822 SS	Below 45 PR	29	36%
■ Urgent Intervention	Below 760 SS	Below 25 PR	30	38%
Category Total			77	96%
<b>Students Tested</b>			80	

**Key questions to ask based on this and other information:** Are you satisfied with the number of students at the highest level of performance? Next, consider the level or score that indicates proficiency. Which students just above proficiency are you "worried about" and what support within or beyond core instruction is warranted? What support is needed for students just below? Do all students represented by your lowest level need urgent intervention?

**Browning High School - Growth**

Grade	School Year Apr 1 - May 31 (Spring)	Percent of Students by District Benchmark Category	Total Students	70+ PR	45-69 PR	25-44 PR	1-24 PR
Grade 11	2017 - 2018 Grade 11		63	3% 2	32% 20	33% 21	32% 20
	2016 - 2017 Grade 10		83	14% 12	25% 21	24% 20	36% 30
	2015 - 2016 Grade 9		31	6% 2	42% 13	13% 4	39% 12

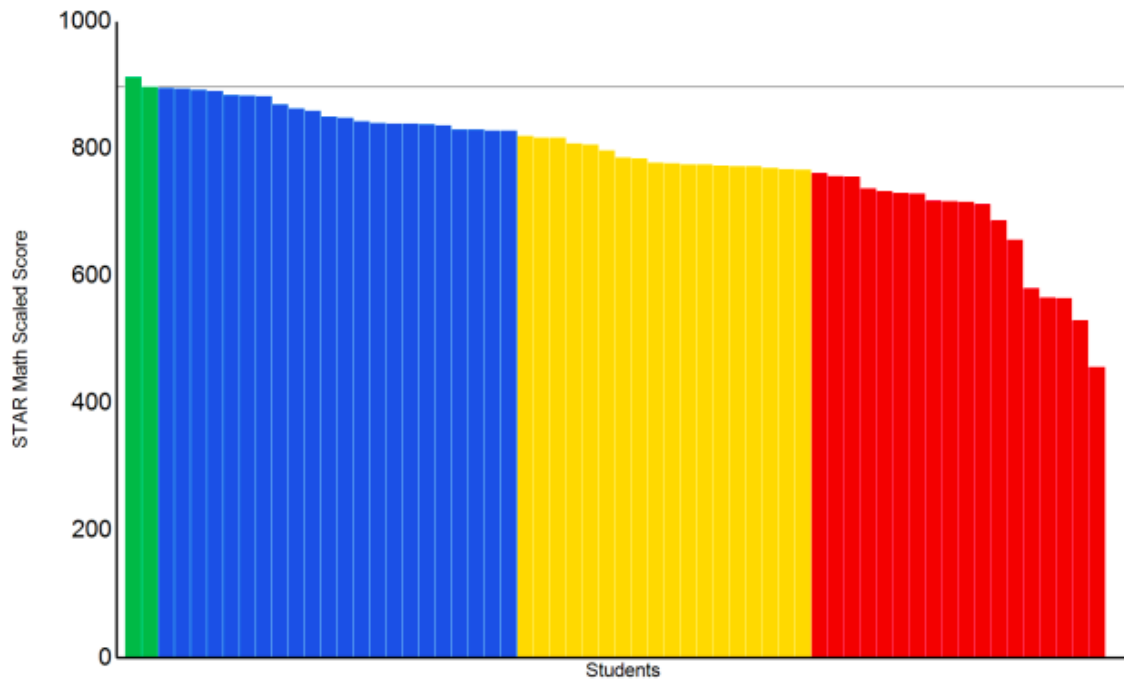
School: Browning High School

Reporting Period: 5/1/2018 - 5/31/2018  
(Spring)

**Report Options**

Reporting Parameter Group: All Demographics [Default]

**Grade: 11**



Categories / Levels	Benchmark		Students	
	Scaled Score	Percentile Rank	Number	Percent
<b>At/Above Benchmark</b>				
■ At/Above Benchmark	At/Above 897 SS	At/Above 70 PR	2	3%
Category Total			2	3%
<b>Below Benchmark</b>				
■ On Watch	Below 897 SS	Below 70 PR	22	37%
■ Intervention	Below 829 SS	Below 45 PR	18	30%
■ Urgent Intervention	Below 767 SS	Below 25 PR	18	30%
Category Total			58	97%
<b>Students Tested</b>			60	

# Grade 12:

## Browning High School - Growth

Grade	School Year Aug 1 - Sep 30 (Fall)	Percent of Students by District Benchmark Category	Total Students	70+ PR	45-69 PR	25-44 PR	1-24 PR
Grade 12	2017 - 2018 Grade 12		58	16% 9	29% 17	22% 13	33% 19
	2016 - 2017 Grade 11		71	13% 9	31% 22	20% 14	37% 26
	2015 - 2016 Grade 10		18	11% 2	17% 3	33% 6	39% 7



## Screening Report District Benchmark

1

Printed Wednesday, October 4, 2017 12:59:05 PM

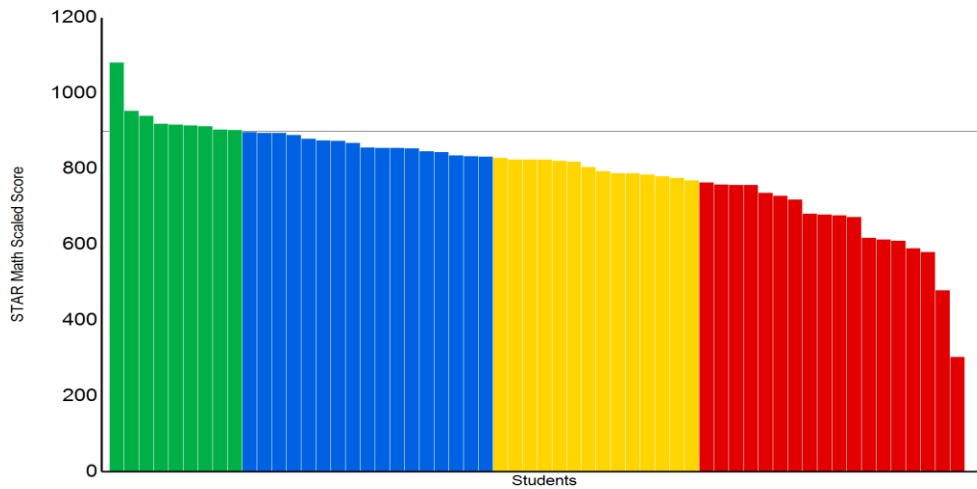
School: Browning High School

Reporting Period: 9/1/2017 - 9/29/2017  
(Fall)

### Report Options

Reporting Parameter Group: All Demographics [Default]

### Grade: 12



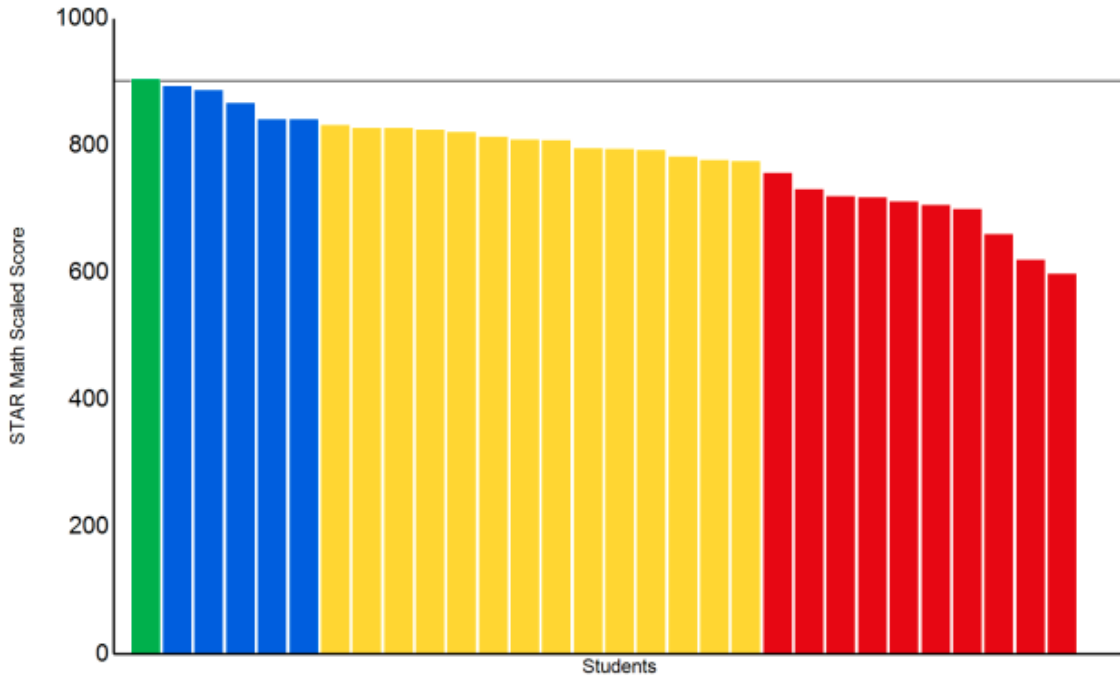
Categories / Levels	Benchmark		Students	
	Scaled Score	Percentile Rank	Number	Percent
<b>At/Above Benchmark</b>				
■ At/Above Benchmark	At/Above 899 SS	At/Above 70 PR	9	16%
Category Total			9	16%
<b>Below Benchmark</b>				
■ On Watch	Below 899 SS	Below 70 PR	17	29%
■ Intervention	Below 832 SS	Below 45 PR	14	24%
■ Urgent Intervention	Below 770 SS	Below 25 PR	18	31%
Category Total			49	84%
<b>Students Tested</b>			58	

**Key questions to ask based on this and other information:** Are you satisfied with the number of students at the highest level of performance? Next, consider the level or score that indicates proficiency. Which students just above proficiency are you "worried about" and what support within or beyond core instruction is warranted? What support is needed for students just below? Do all students represented by your lowest level need urgent intervention?

**Report Options**

Reporting Parameter Group: All Demographics [Default]

**Grade: 12**



Categories / Levels	Benchmark		Students	
	Scaled Score	Percentile Rank	Number	Percent
<b>At/Above Benchmark</b>				
■ At/Above Benchmark	At/Above 902 SS	At/Above 70 PR	1	3%
Category Total			1	3%
<b>Below Benchmark</b>				
■ On Watch	Below 902 SS	Below 70 PR	5	17%
■ Intervention	Below 837 SS	Below 45 PR	14	47%
■ Urgent Intervention	Below 775 SS	Below 25 PR	10	33%
Category Total			29	97%
<b>Students Tested</b>			30	

**Key questions to ask based on this and other information:** Are you satisfied with the number of students at the highest level of performance? Next, consider the level or score that indicates proficiency. Which students just above proficiency are you "worried about" and what support within or beyond core instruction is warranted? What support is needed for students just below? Do all students represented by your lowest level need urgent intervention?

**Browning High School - Growth**

Grade	School Year Apr 1 - May 31 (Spring)	Percent of Students by District Benchmark Category	Total Students	70+ PR	45-69 PR	25-44 PR	1-24 PR
Grade 12	2017 - 2018 Grade 12		19	0% 0	26% 5	26% 5	47% 9
	2016 - 2017 Grade 11		44	7% 3	36% 16	27% 12	30% 13
	2015 - 2016 Grade 10		65	17% 11	26% 17	25% 16	32% 21

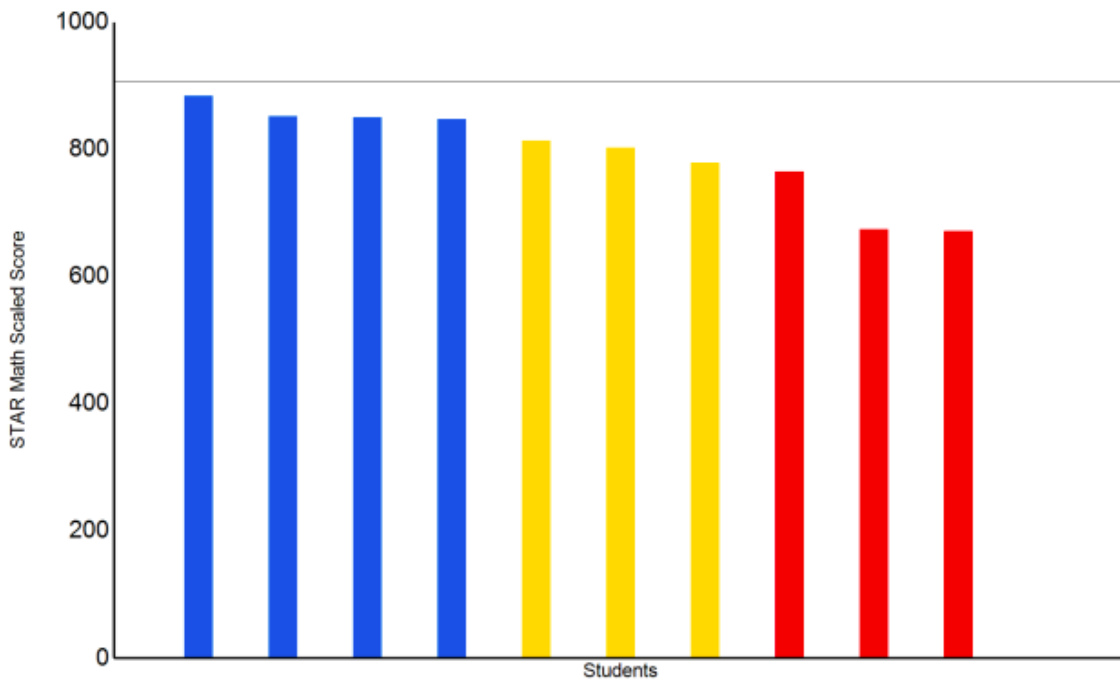
School: Browning High School

Reporting Period: 5/1/2018 - 5/31/2018  
(Spring)

**Report Options**

Reporting Parameter Group: All Demographics [Default]

**Grade: 12**






Categories / Levels	Benchmark		Students	
	Scaled Score	Percentile Rank	Number	Percent
<b>At/Above Benchmark</b>				
At/Above Benchmark	At/Above 907 SS	At/Above 70 PR	0	0%
Category Total			0	0%
<b>Below Benchmark</b>				
On Watch	Below 907 SS	Below 70 PR	4	40%
Intervention	Below 842 SS	Below 45 PR	3	30%
Urgent Intervention	Below 780 SS	Below 25 PR	3	30%
Category Total			10	100%
<b>Students Tested</b>			10	




# Longitudinal Report – Growth (Same students over multiple years)

## 9<sup>th</sup> Grade Fall vs. Spring

### Browning High School - Growth




Grade	School Year Aug 1 - Sep 30 (Fall)	Percent of Students by District Benchmark Category	Total Students	70+ PR	45-69 PR	25-44 PR	1-24 PR
Grade 9	2017 - 2018 Grade 9		135	4% 6	16% 21	22% 30	58% 78
	2016 - 2017 Grade 8		123	5% 6	16% 20	24% 29	55% 68
	2015 - 2016 Grade 7		114	8% 9	23% 26	23% 26	46% 53

### Browning High School - Growth




Grade	School Year Apr 1 - May 31 (Spring)	Percent of Students by District Benchmark Category	Total Students	70+ PR	45-69 PR	25-44 PR	1-24 PR
Grade 9	2017 - 2018 Grade 9		99	7% 7	24% 24	25% 25	43% 43
	2016 - 2017 Grade 8		122	3% 4	20% 25	22% 27	54% 66
	2015 - 2016 Grade 7		107	8% 9	12% 13	24% 26	55% 59

## 10<sup>th</sup> Grade Fall vs. Spring

### Browning High School - Growth

Grade	School Year Aug 1 - Sep 30 (Fall)	Percent of Students by District Benchmark Category	Total Students	70+ PR	45-69 PR	25-44 PR	1-24 PR
Grade 10	2017 - 2018 Grade 10		140	12% 17	20% 28	26% 37	41% 58
	2016 - 2017 Grade 9		137	7% 10	20% 27	22% 30	51% 70
	2015 - 2016 Grade 8		125	7% 9	14% 18	34% 43	44% 55

### Browning High School - Growth

Grade	School Year Apr 1 - May 31 (Spring)	Percent of Students by District Benchmark Category	Total Students	70+ PR	45-69 PR	25-44 PR	1-24 PR
Grade 10	2017 - 2018 Grade 10		101	10% 10	19% 19	29% 29	43% 43
	2016 - 2017 Grade 9		97	10% 10	23% 22	18% 17	49% 48
	2015 - 2016 Grade 8		127	9% 11	13% 17	24% 30	54% 69



## 11<sup>th</sup> Grade Fall vs. Spring

### Browning High School - Growth

Grade	School Year Aug 1 - Sep 30 (Fall)	Percent of Students by District Benchmark Category	Total Students	70+ PR	45-69 PR	25-44 PR	1-24 PR
Grade 11	2017 - 2018 Grade 11		109	8% 9	20% 22	28% 31	43% 47
	2016 - 2017 Grade 10		102	12% 12	24% 24	23% 23	42% 43
	2015 - 2016 Grade 9		-	-	-	-	-

### Browning High School - Growth

Grade	School Year Apr 1 - May 31 (Spring)	Percent of Students by District Benchmark Category	Total Students	70+ PR	45-69 PR	25-44 PR	1-24 PR
Grade 11	2017 - 2018 Grade 11		63	3% 2	32% 20	33% 21	32% 20
	2016 - 2017 Grade 10		83	14% 12	25% 21	24% 20	36% 30
	2015 - 2016 Grade 9		31	6% 2	42% 13	13% 4	39% 12

## 12<sup>th</sup> Grade Fall vs. Spring

### Browning High School - Growth

Grade	School Year Aug 1 - Sep 30 (Fall)	Percent of Students by District Benchmark Category	Total Students	70+ PR	45-69 PR	25-44 PR	1-24 PR
Grade 12	2017 - 2018 Grade 12		58	16% 9	29% 17	22% 13	33% 19
	2016 - 2017 Grade 11		71	13% 9	31% 22	20% 14	37% 26
	2015 - 2016 Grade 10		18	11% 2	17% 3	33% 6	39% 7

### Browning High School - Growth

Grade	School Year Apr 1 - May 31 (Spring)	Percent of Students by District Benchmark Category	Total Students	70+ PR	45-69 PR	25-44 PR	1-24 PR
Grade 12	2017 - 2018 Grade 12		19	0% 0	26% 5	26% 5	47% 9
	2016 - 2017 Grade 11		44	7% 3	36% 16	27% 12	30% 13
	2015 - 2016 Grade 10		65	17% 11	26% 17	25% 16	32% 21

# Longitudinal Report – Growth (Same students over multiple years- ONLY STUDENTS WHO TESTED IN ALL TIMEFRAMS)

## 9<sup>th</sup> Grade Fall vs. Spring

### Browning High School - Growth

Grade	School Year Aug 1 - Sep 30 (Fall)	Percent of Students by District Benchmark Category	Total Students	70+ PR	45-69 PR	25-44 PR	1-24 PR
Grade 9	2017 - 2018 Grade 9		102	4% 4	16% 16	24% 24	57% 58
	2016 - 2017 Grade 8		102	5% 5	16% 16	25% 25	55% 56
	2015 - 2016 Grade 7		102	8% 8	25% 25	24% 24	44% 45

### Browning High School - Growth

Grade	School Year Apr 1 - May 31 (Spring)	Percent of Students by District Benchmark Category	Total Students	70+ PR	45-69 PR	25-44 PR	1-24 PR
Grade 9	2017 - 2018 Grade 9		68	9% 6	21% 14	28% 19	43% 29
	2016 - 2017 Grade 8		68	4% 3	26% 18	22% 15	47% 32
	2015 - 2016 Grade 7		68	9% 6	15% 10	26% 18	50% 34

## 10<sup>th</sup> Grade Fall vs. Spring

### Browning High School - Growth



Grade	School Year Aug 1 - Sep 30 (Fall)	Percent of Students by District Benchmark Category	Total Students	70+ PR	45-69 PR	25-44 PR	1-24 PR
Grade 10	2017 - 2018 Grade 10		113	12% 13	19% 22	32% 36	37% 42
	2016 - 2017 Grade 9		113	8% 9	20% 23	24% 27	48% 54
	2015 - 2016 Grade 8		113	8% 9	16% 18	34% 38	42% 48

### Browning High School - Growth




Grade	School Year Apr 1 - May 31 (Spring)	Percent of Students by District Benchmark Category	Total Students	70+ PR	45-69 PR	25-44 PR	1-24 PR
Grade 10	2017 - 2018 Grade 10		68	12% 8	15% 10	31% 21	43% 29
	2016 - 2017 Grade 9		68	10% 7	19% 13	19% 13	51% 35
	2015 - 2016 Grade 8		68	7% 5	19% 13	22% 15	51% 35

## 11<sup>th</sup> Grade Fall vs. Spring

### Browning High School - Growth




Grade	School Year Aug 1 - Sep 30 (Fall)	Percent of Students by District Benchmark Category	Total Students	70+ PR	45-69 PR	25-44 PR	1-24 PR
Grade 11	2017 - 2018 Grade 11		88	7% 6	23% 20	31% 27	40% 35
	2016 - 2017 Grade 10		88	8% 7	26% 23	26% 23	40% 35

### Browning High School - Growth




Grade	School Year Apr 1 - May 31 (Spring)	Percent of Students by District Benchmark Category	Total Students	70+ PR	45-69 PR	25-44 PR	1-24 PR
Grade 11	2017 - 2018 Grade 11		15	7% 1	60% 9	20% 3	13% 2
	2016 - 2017 Grade 10		15	7% 1	53% 8	20% 3	20% 3
	2015 - 2016 Grade 9		15	13% 2	33% 5	13% 2	40% 6

## 12<sup>th</sup> Grade Fall vs. Spring

### Browning High School - Growth

Grade	School Year Aug 1 - Sep 30 (Fall)	Percent of Students by District Benchmark Category	Total Students	70+ PR	45-69 PR	25-44 PR	1-24 PR
Grade 12	2017 - 2018 Grade 12		9	0% 0	22% 2	22% 2	56% 5
	2016 - 2017 Grade 11		9	0% 0	11% 1	33% 3	56% 5
	2015 - 2016 Grade 10		9	11% 1	11% 1	33% 3	44% 4

### Browning High School - Growth

Grade	School Year Apr 1 - May 31 (Spring)	Percent of Students by District Benchmark Category	Total Students	70+ PR	45-69 PR	25-44 PR	1-24 PR
Grade 12	2017 - 2018 Grade 12		7	0% 0	57% 4	29% 2	14% 1
	2016 - 2017 Grade 11		7	0% 0	57% 4	14% 1	29% 2
	2015 - 2016 Grade 10		7	0% 0	29% 2	71% 5	0% 0

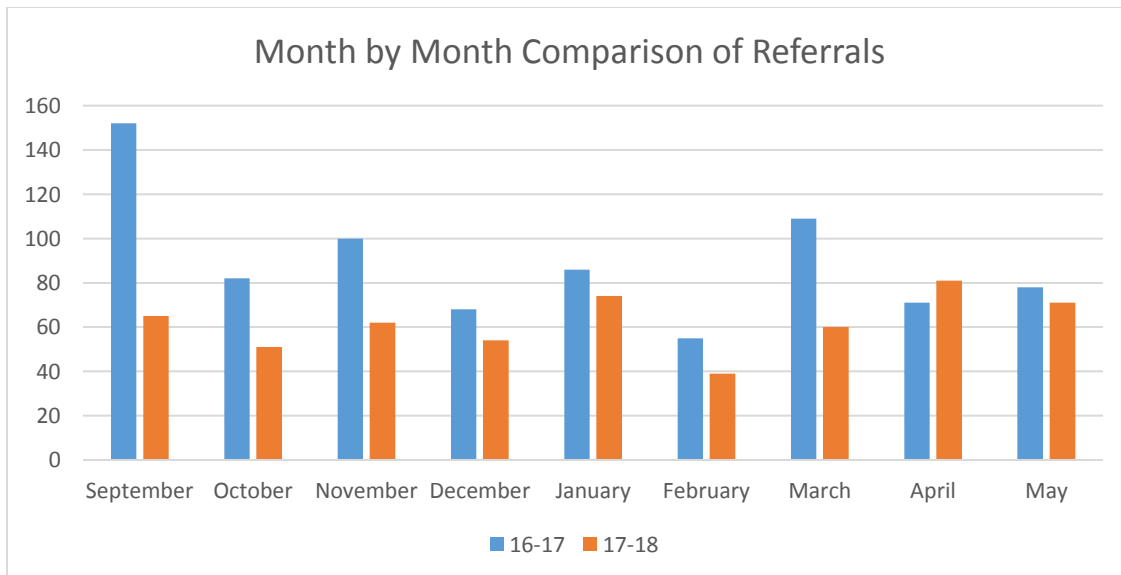
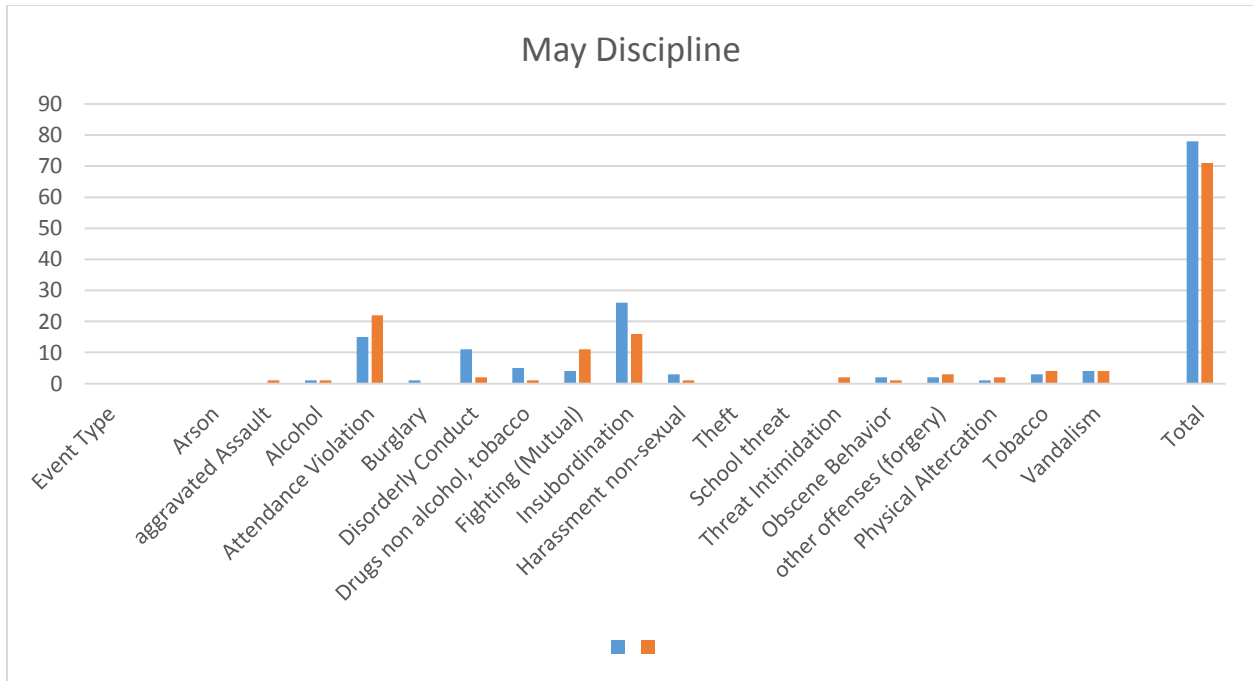
## ACT (Spring 2016 Junior Class Only)

Year	Number of Students Tested		Average ACT Scores									
	School	State	English		Mathematics		Reading		Science		Composite	
			School	State	School	State	School	State	School	State	School	State
2011-2012	76	2,626	13.6	18.2	16.4	20.1	15.7	20.1	14.9	19.6	15.3	19.6
2012-2013	81	8,931	12.6	19.0	15.8	20.4	14.8	20.7	14.1	20.0	14.4	20.1
2013-2014	62	8,828	13.2	18.5	16.8	20.2	16.2	20.5	16.4	20.1	15.7	20.0
2014-2015	85	8,898	13.5	18.5	15.6	20.0	15.4	20.3	15.6	20.2	15.1	19.9
2015-2016	111	9,300	13.5	18.6	15.5	20.0	15.7	20.7	15.7	20.2	15.2	20.0

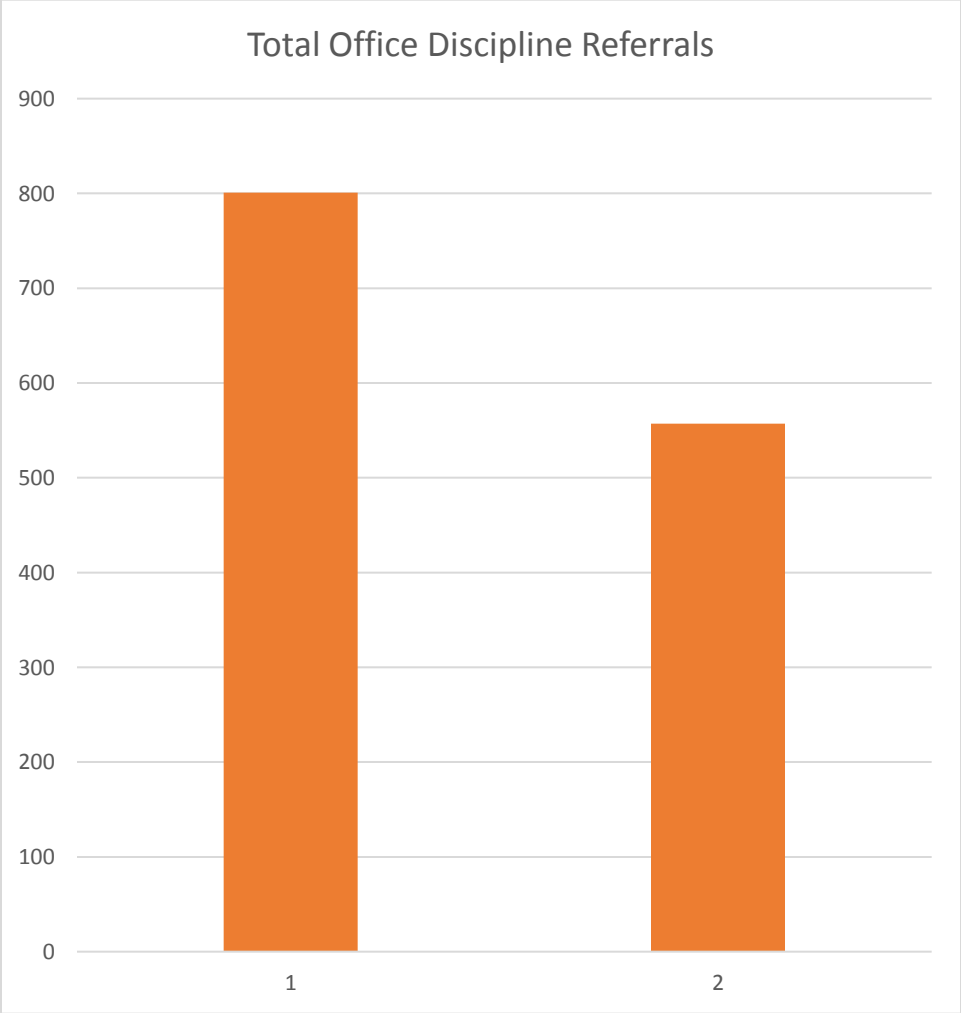
## ACT (Spring 2017 Junior Class Only)

Year	Number of Students Tested		Average ACT Scores									
	District	State	English		Mathematics		Reading		Science		Composite	
			District	State	District	State	District	State	District	State	District	State
2012-2013	81	8,931	12.6	19.0	15.8	20.4	14.8	20.7	14.1	20.0	14.4	20.1
2013-2014	62	8,828	13.2	18.5	16.8	20.2	16.2	20.5	16.4	20.1	15.7	20.0
2014-2015	85	8,898	13.5	18.5	15.6	20.0	15.4	20.3	15.6	20.2	15.1	19.9
2015-2016	111	9,300	13.5	18.6	15.5	20.0	15.7	20.7	15.7	20.2	15.2	20.0
<b>2016-2017</b>	<b>97</b>	<b>9,381</b>	<b>12.7</b>	<b>18.3</b>	<b>15.6</b>	<b>19.8</b>	<b>15.4</b>	<b>20.3</b>	<b>14.8</b>	<b>19.8</b>	<b>14.7</b>	<b>19.7</b>

## Discipline Data



School Year	16-17	17-18
Total	801	557



## Attendance

This is the last 2 months of school

<b>17-18</b> <b>Browning High School</b> PO Box 809, Browning MT 59417-0809 Generated on 05/03/2018 05:42:38 PM Page 1 of 1	<b>Attendance/Membership Summary Report</b> Start/End Date: 04/01/2018 - 05/31/2018 School(s): 1 Calendar(s): 1 Grade: 09, 10, 11, 12
--	---

**School: Browning High School Calendar: 17-18 Browning High School**

	Grade	Student Count	Membership Days	Absent Days	Present Days	ADM	ADA	Unexcused Days	Absences Avg. Daily	Percent In Attendance
	09	147	5755	801.19	4953.81	140.37	120.72	742.53	18.21	86.08%
	10	147	5859	792.38	5066.62	142.90	123.59	742.08	18.04	86.48%
	11	132	5236	654.17	4581.83	127.72	111.75	591.49	14.38	87.51%
	12	129	5207	470.31	4736.69	127.00	115.52	441.47	10.77	90.97%
<b>Total</b>	<b>4</b>	<b>555</b>	<b>22057</b>	<b>2718.05</b>	<b>19338.95</b>	<b>537.99</b>	<b>471.58</b>	<b>2517.57</b>	<b>61.40</b>	<b>87.68%</b>

This is for the entire year. While we had some months with good attendance, we also had several months this winter and spring where the daily averages were low and this affected our overall percentages. The yearly data also includes students who were dropped after 10 days of absences in a row.

<b>17-18</b> <b>Browning High School</b> PO Box 809, Browning MT 59417-0809 Generated on 06/05/2018 10:54:38 AM Page 1 of 1	<b>Attendance/Membership Summary Report</b> Start/End Date: 08/28/2017 - 06/02/2018 School(s): 1 Calendar(s): 1 Grade: 09, 10, 11, 12
--	---

**School: Browning High School Calendar: 17-18 Browning High School**

	Grade	Student Count	Membership Days	Absent Days	Present Days	ADM	ADA	Unexcused Days	Absences Avg. Daily	Percent In Attendance
	09	165	26272	6635.44	19636.56	143.57	107.26	6043.07	33.04	74.74%
	10	178	27310	6071.41	21238.59	149.23	116.05	5491.36	30.09	77.77%
	11	154	23664	4583.35	19080.65	129.29	104.25	4114.97	22.50	80.63%
	12	163	24119	3275.39	20843.61	131.77	113.91	2994.21	16.30	86.42%
<b>Total</b>	<b>4</b>	<b>660</b>	<b>101365</b>	<b>20565.59</b>	<b>80799.41</b>	<b>553.86</b>	<b>441.47</b>	<b>18643.61</b>	<b>101.93</b>	<b>79.71%</b>

## May Activities

As usual May was an extremely busy month. We had our end of year assessments for ISIP and STAR Math. We conducted our 8<sup>th</sup> grade orientation with visits from BMS 8<sup>th</sup> grade students, East Glacier 8<sup>th</sup> Grade, and DeLasalle 8<sup>th</sup> Grade students over several weeks. We also hosted an orientation night for the parents of all incoming 9<sup>th</sup> grade students.

For Seniors we had our senior finals week, Senior Awards/Parent Recognition Night, graduation practice, our annual senior walk through all the District schools located in town, and of course graduation.

Our final week of school for all other students was filled with semester finals, student council elections, and student check out. We also had a fun activity day on Friday June 1 for all of our students. We had several local programs that helped organize and pay for this. It was a reward for the staff completing weekly Olweus meetings with their advisory students, and for the reduction of bullying behavior as reported by students in their surveys, and as documented in the reduction of bullying reported.





