

IMESD Service Providers

Special Education

101 FTE

- Audiology Services
- Autism Consultants
- Early Intervention/Early Childhood (EI/ECSE)
- Hearing & Vision Services
- Long-Term Care & Treatment
- Physical Therapy/Occupational Therapy
- School Psychology & Behavioral Services
- Special Education Administration
- Special Education Program/Child Find (Birth to 5)
- Speech/Language Program (SLP)
- Transition Network Facilitator

Administrative & Other Services 50 FTE

- Business Services
- CARE Coordinators
- Communication & Print Solutions
- Cooperative Purchasing & Courier
- Facilities
- Federal Grants Collections
- Human Resources
- Medicaid
- Nurses
- RiverBend
- Superintendent Leadership

Technology Support

38 FTE

- Analysts
- E-Rate
- Server Specialists
- Technology Specialists
- Web Development

Instructional Services

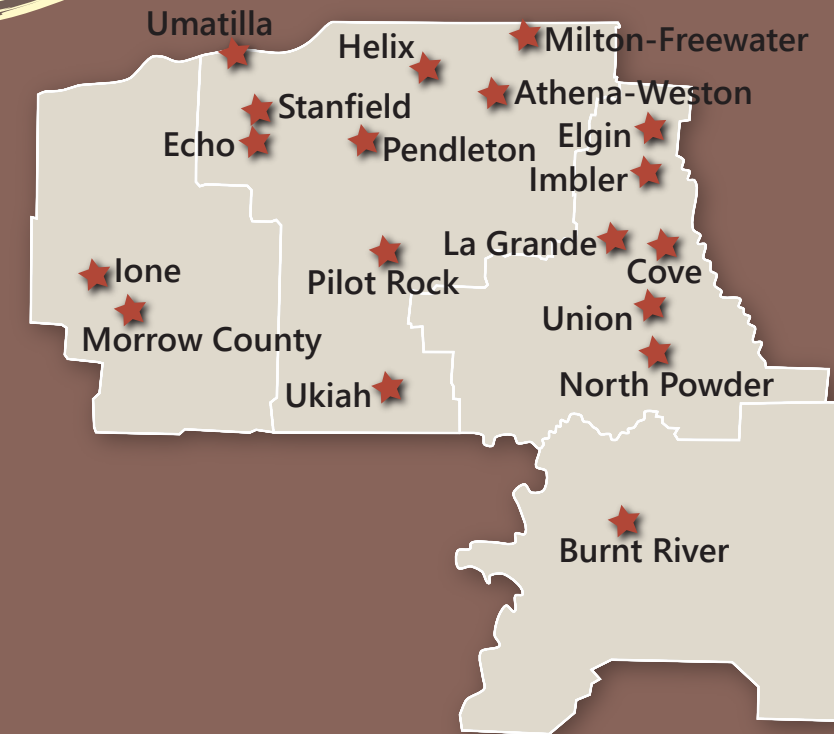
25 FTE

- Assessment & Accountability
- Blue Mountain Early Learning Hub
- Chronic Absenteeism
- Eastern Promise/Career & Technical Education
- English Language Learners TOSA
- Instructional Coaches
- Instructional Services Administration
- InterMountain Online
- Migrant Education Program

214 Total FTE

"The IMESD consortium model is based on trust, relationships and effective listening. The IMESD strives to be nimble in responding to individual needs of our school districts. Our model increases capacity of services and focuses on students first."

- IMESD Board of Directors



Entrepreneurial Business Plans

Technology

Revenue	Expenditures	Net Income (Loss)
\$5,744,497	\$5,774,073	(\$29,576)

Funding Sources: General Fund, Entrepreneurial Contracts

Communication & Print Solutions

Revenue	Expenditures	Net Income (Loss)
\$260,434	\$309,243	(\$48,809)

Funding Sources: General Fund, Entrepreneurial Contracts

Cooperative Purchasing & Courier Service

Revenue	Expenditures	Net Income (Loss)
\$952,397	\$898,444	\$53,953

Funding Sources: General Fund, Entrepreneurial Contracts

Technology received less support for operations from the General Fund.
Communication & Print Solutions focused on lower-margin, critical website conversions.

For more information about Entrepreneurial Business Plans, visit the IMESD website at www.imesd.k12.or.us/local-service-plan

2019-2020 Local Service Plan MAP

P-20 Educational Services

InterMountain ESD
2001 SW Nye Ave | Pendleton, OR 97801
541.966.3100 or 888.437.6892
www.imesd.k12.or.us

Building Color Key

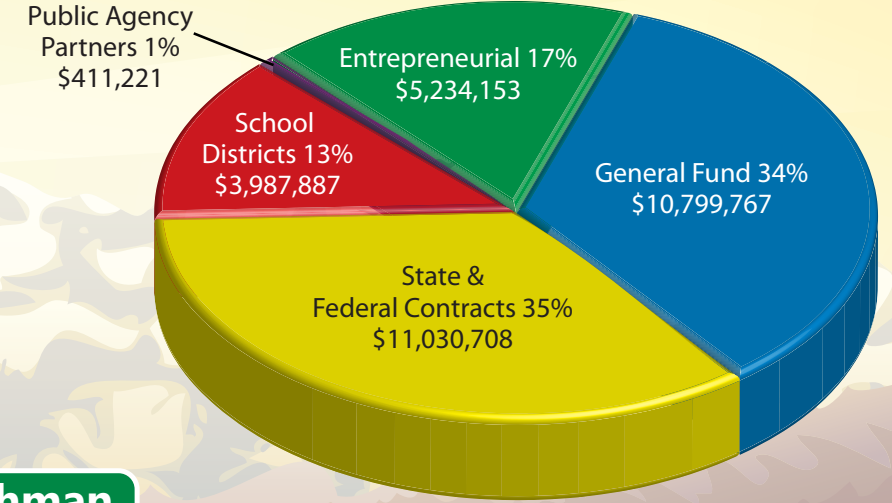
- State & Federal Contracts
- General Fund
- Entrepreneurial
- School Districts
- Public Agency Partners



Did you know?

- The IMESD serves 18 component school districts.
- We serve 31,000 ADMw in 4 counties.
- Each year, the IMESD receives \$362 per ADMw from the Basic School Support Fund (BSSF); school districts receive \$8,000 per ADMw from the State School Fund (SSF).
- Through the Local Service Plan process, the consortium allocates **General Fund** resources equitably across the region.

2018 ESD Revenue Detail



Technology Services



Cooperative Purchasing



Communication & Print Solutions



High School Graduation



Freshman On-Track



**Instructional Services
Assessment/Accountability
Migrant Education**

Kindergarten Readiness



Audiology



Early Intervention/Early Childhood Special Education Program

3rd Grade Reading



Eastern Promise/CTE



**Speech/Language Program
School Psychology & Behavioral Services**



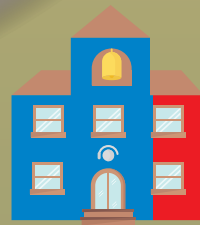
Blue Mountain Early Learning Hub



**Wellness Hubs:
Nurses, CARE, Mental Health**



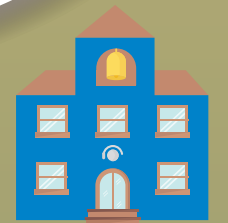
School Security



Admin Services



Regional Programs



Outdoor School