

NORTH BEND

SCHOOL DISTRICT 13

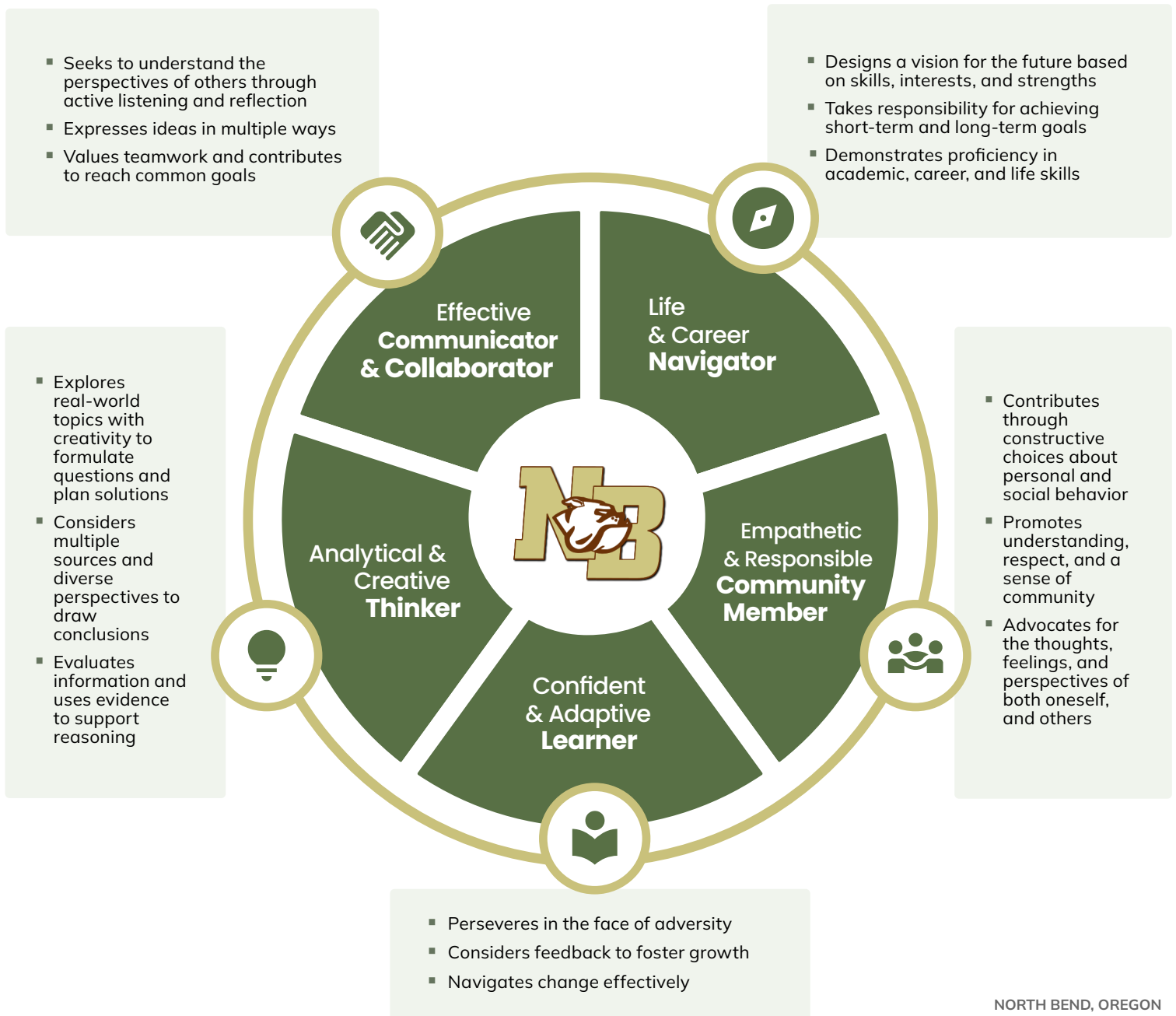
Every Student. Every Day. Every Way.

OUR PROMISE

Every North Bend student is **known, valued, and supported** on their path to high school **graduation and future success.**



PORTRAIT OF A NORTH BEND GRADUATE



GOALS & MEASURES OF STUDENT PROGRESS

1

GOAL #1:

Foundational Readiness for Success

Our students will meet benchmarks in social-emotional learning, literacy, and mathematics.

MEASURES OF STUDENT PROGRESS

- 1.A** Students achieving grade level standards in English Language Arts (ELA) and Math by the end of Grades K, 1, 2, 3
- 1.B** Students achieving self-regulation and positive behavior competencies by the end of Grades K, 1, 2, 3



2

GOAL #2:

Safe, Supported, Connected, & Present

Our students will experience a safe, inclusive environment that nurtures positive relationships and supports their growth and development.

MEASURES OF STUDENT PROGRESS

- 2.A** Students' perceptions of strong school climate (including: safety, inclusion, student-staff relationships)
- 2.B** Students' participation in co-curricular and extra-curricular activities
- 2.C** Students' attendance/absenteeism



3

GOAL #3:

Continuous Growth & Academic Achievement

Our students will have access to the opportunities and tools to demonstrate year-to-year growth toward meeting academic standards.

MEASURES OF STUDENT PROGRESS

- 3.A** Students making continuous academic growth toward district and state standards
- 3.B** Students meeting proficiency standards on district and state assessments
- 3.C** Students experiencing universal access to supports and opportunities across student groups and schools



4

GOAL #4:

Equipped for Success Beyond Graduation

Our students will graduate equipped with skills to adapt to life's challenges and thrive in a meaningful future.

MEASURES OF STUDENT PROGRESS

- 4.A** Students on-track for on-time graduation
- 4.B** Students enrolling and successfully completing advanced experiences (e.g., Dual Credit; CTE Pathways; Community projects/partnerships; Upward Bound)
- 4.C** Students demonstrating competencies from Portrait of a Graduate at key transitions
- 4.D** Students' readiness for successful postsecondary transition within one year of graduation (e.g.: enrollment in a 2-year/4-year college; secure employment; enlistment in the military; engagement in vocational training)



SIGNATURE STRATEGIES



Strategies for GOAL #1	Strategies for GOAL #2	Strategies for GOAL #3	Strategies for GOAL #4
<p>1.1 Monitor and support the use of research-based curriculum and instructional practices across the district.</p> <p>1.2 Provide comprehensive early learning instruction, programs and interventions.</p> <p>1.3 Facilitate consistent two-way communication with families to build awareness, engagement and student success.</p>	<p>2.1 Cultivate student connections, engagement, and positive school culture to enrich student achievement and attendance.</p> <p>2.2 Foster positive learning environments to support the safety, wellbeing, and inclusion of each student.</p> <p>2.3 Strengthen school-home connection, access to programs and resources, and shared responsibility for student success.</p>	<p>3.1 Implement systems for identification, support, and continuous monitoring of strengths and needs tailored to each student.</p> <p>3.2 Ensure access to standards-aligned curriculum and effective instruction through standards-based continuous professional learning.</p> <p>3.3 Ensure that all students are provided the necessary supports to mitigate barriers and facilitate access to district-provided opportunities and resources.</p>	<p>4.1 Provide structured planning and opportunities for reflection on both academic and life goals for students in grades K-12.</p> <p>4.2 Develop a system of support to strengthen students' successful transitions from middle school to high school and high school to career and college.</p> <p>4.3 Provide opportunities for learning real-world skills through community engagement and robust college and career readiness programs.</p>



Every Student. Every Day. Every Way.

MESSAGE FROM THE Superintendent

I am pleased to present our 2025 through 2030 strategic plan. Our plan, including our goals and our signature strategies, emerged from a collaborative effort of 115 people who, together, dedicated hundreds of hours of time over the course of a seven month period to meet, discuss, write, evaluate, and ultimately determine what the focus of our work with students will be in the next five years. This group of people represented students, staff, parents, community members, and community leaders.

Ultimately, student success is our focus. Our "Portrait of a Graduate" outlines the characteristics we want every North Bend graduate to possess as they move into the next phase of their life. All of the goals and strategies represented are designed to make the "Portrait of a Graduate" a reality.

I encourage you to join us as we strive to fulfill our promise that "every North Bend student is known, valued, and supported on their path to high school graduation and future success."

Vince Swagerty, Superintendent
North Bend School District #13

Board of Directors

Jim Jordan
Chair

Carol Yardley
Vice Chair

Michelle Roberts
2nd Vice Chair

Dallas Petenbrink
Member

Mary Schilling
Member

Julie Thies
Member

Nathan McClintock
Member



Our Schools

Hillcrest Elementary

North Bend Middle School

North Bay Elementary

North Bend High School

2,016 Students Enrolled

2023-2024 SY

2% American Indian

3% Ever English Learners

2% Asian

40% Low-income

<1% Black

16% Students with Disabilities

12% Hispanic

<1% Native Hawaiian /Other Pacific Islander

9% Multi-Racial

74% White

