

DON'T WAIT. GRADUATE.



**PREMIER
HIGH SCHOOL**

Amendment Request

June 2023

RESPONSIVE EDUCATION SOLUTIONS TEAM

James Taylor	RES Chief Financial Officer/Technology Officer
Rhonda Bradford	RES AR Superintendent
Dennis Felton, Jr. (Presenter)	AR State Director, Premier High Schools AR State Director, Virtual Learning
Katie Stephens	RES AR Executive Director of Finance
Curtis Shack	Executive Director of Data and Systems Management
Darius Young	PHS Online Administrator
Aaron Duvall	AR CTE Director
Elaine Plybon	BlueX Virtual National Director of Learning
Kacy Barton	BlueX Virtual Systems Administrator
Marla Pearson	RES AR Director Special Programs



PREMIER
HIGH SCHOOL.

Amendment Request Overview



- 1) **Enrollment Cap:** PHS of Arkansas is seeking to increase the overall enrollment cap for the charter from 875 to 975 students.
- 1) To amend the current enrollment cap of each school to reflect the enrollment trends and meet the demands of the various schools within the charter.



PREMIER
HIGH SCHOOLS
OF ARKANSAS

OUR MISSION

is to provide **hope** for students through a **caring, mastery-based, blended learning** option, that promotes a free society and cultivate **moral and academic excellence.**



WHO WE SERVE?

- Students seeking a smaller, personalized in person or virtual learning environment
- Disengaged Student
- Students who have or “at-risk” of dropping out of high school
- Employed Student
- Parent Student
- Delinquent Youth



Why do we continue to “expand” and “exist”?

- 1) Provide an innovative academic program to Arkansas communities that provides an unique educational opportunity with an emphasis on educationally disengaged students.
- 2) Decrease the dropout rate and increase the graduation rate in Arkansas communities where educationally disadvantaged students are a concern.
- 3) To be responsive to parent and student flexibility and needs.
- 4) To replicate best practices in “personalized learning” in Arkansas to increase program capacity and accessibility.
- 5) Premier High School serves ALL...



Premier High Schools in Arkansas

Current Locations

PHS Little Rock

PHS North Little Rock

PHS Springdale

PHS Fort Smith

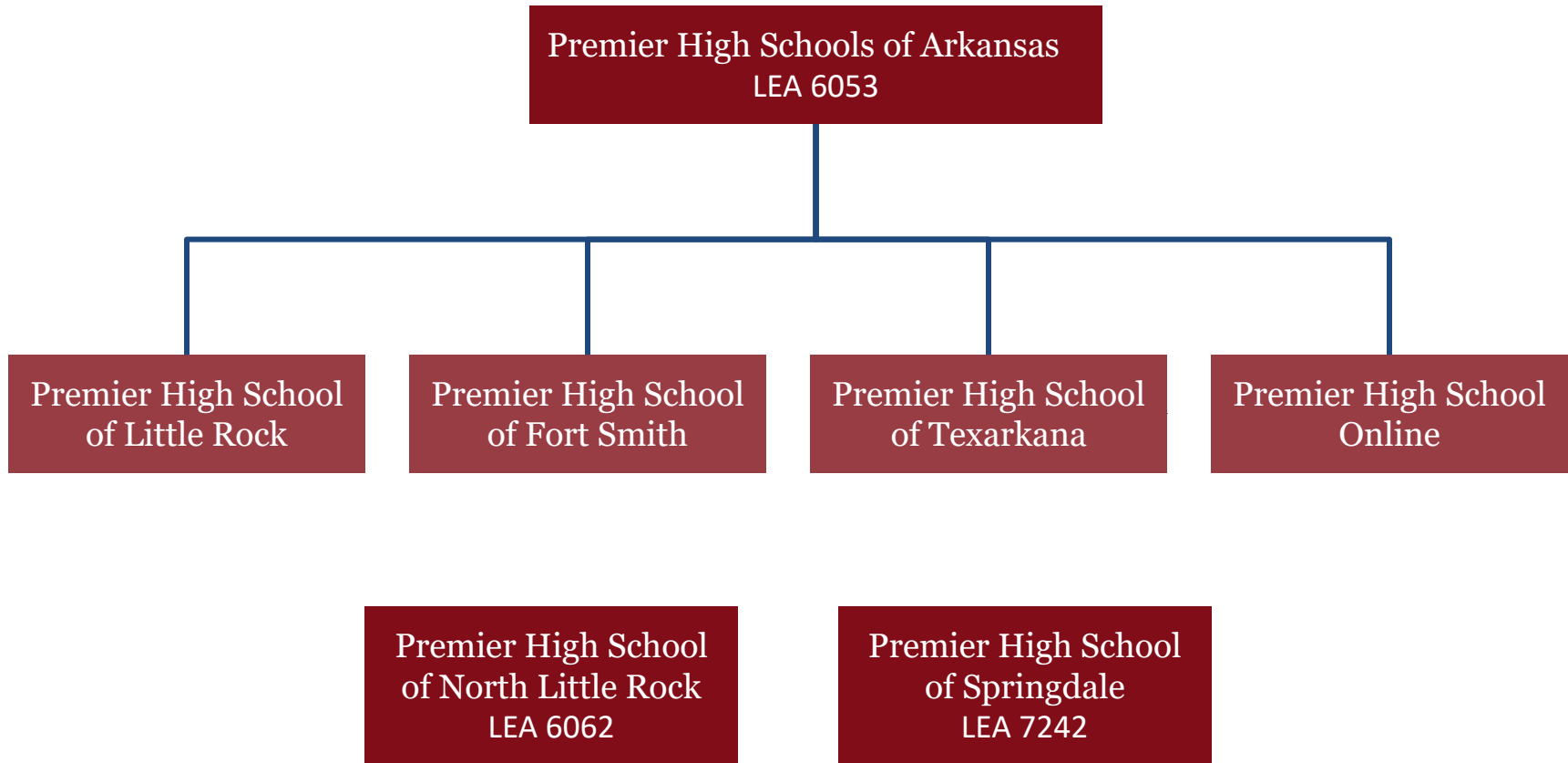
PHS Texarkana

PHS Online

Arkansas



District Structure



Enrollment Breakdown by School

Campus	Current Enrollment Cap	Current Enrollment	Capacity Filled
Little Rock	250	60	24%
Fort Smith	300	66	22%
Texarkana	75	46	61%
Premier Online	250	224	90%
Total	875	396	45%

Proposed Enrollment Breakdown by LEA

Campus	Enrollment Cap	Change
Little Rock	175	Decrease of 75
Fort Smith	175	Decrease of 125
Texarkana	125	Increase of 50
Premier Online	500	Increase of 250
Total	975	Increase of 100



Arkansas Expansion- Premier High Schools

PHS Little Rock: Opened 2013

PHS North Little Rock: Opened 2019

PHS Springdale: Opened 2021

PHS Fort Smith: Opened 2022

PHS Texarkana: Opened 2022

PHS Online: Opened 2022

Currently serving over 600 students across Arkansas



**PREMIER
HIGH SCHOOL.**

Arkansas Statewide Impact- Premier High

2022-2023 Reflection

- 129** Arkansas High School Diplomas Awarded
- 42** Dropout Recovery Graduates
- 35** Early Graduates
- 23** Industry Based Certifications earned
- 65** Students earned credit through JAG
- 34** WBL hours completed
- 32** Community Service learning hours
- 1800+** attendees across six (6) graduations

Premier High Schools Year in Review

PHS Little Rock

- Graduated 14 students
- JAG Implementation/CTE (Drone, Digital Marketing, Cosmetology)
- PEER Grant Student Growth

Fort Smith (opened August 2022)

- Graduated 20 students
- PEAK Center Partnership/Community Support/JAG Implementation

Texarkana (opened August 2022)

- Graduated 6 students
- UAHT Partnership & Community Support/JAG Implementation



Premier High Schools Year in Review

PHS Online (Opened August 2022)

-Graduated 37 students

PHS Springdale graduated 21 students

-WBL Implementation

-EAST Initiative

PHS North LR (opened August 2022)

-Graduated 31 students

-CTE Implementation/JAG

-PEER Grant Student Growth

Small Wins

- Student Engagement & Attendance
- NWEA MAP Growth & Participation
- State Assessment Participation
- PEER Grant Participation
- Community Partners in Student Incentives
- CTE Partnership
- Higher Ed Partnership



Premier High Schools Testimonials

PHS Little Rock

-Saniya Lewis

Fort Smith

-Hunter Cleveland

Texarkana

-Jace House (Air Force)

-Devon Williams (Marine Corps)

PHS Online

Eric Walter & Ill'yana Porter

PHS North Little Rock

Parents Feedback

Community Feedback



Parent & Student Interest & Demand

PHS Online

240 students attended during the 22-23 SY

34 students graduated in May 2023

Currently, we have received over **40** applications for the 23-24 school year and anticipate approximately **150** students returning.

PHS Texarkana

30 seats are currently available

Currently, we have received over **15** applications for the 23-24 school year and anticipate approximately **40** students returning.



What Are We Learning?

Students and parents are seeking a flexible alternate educational option across the state.

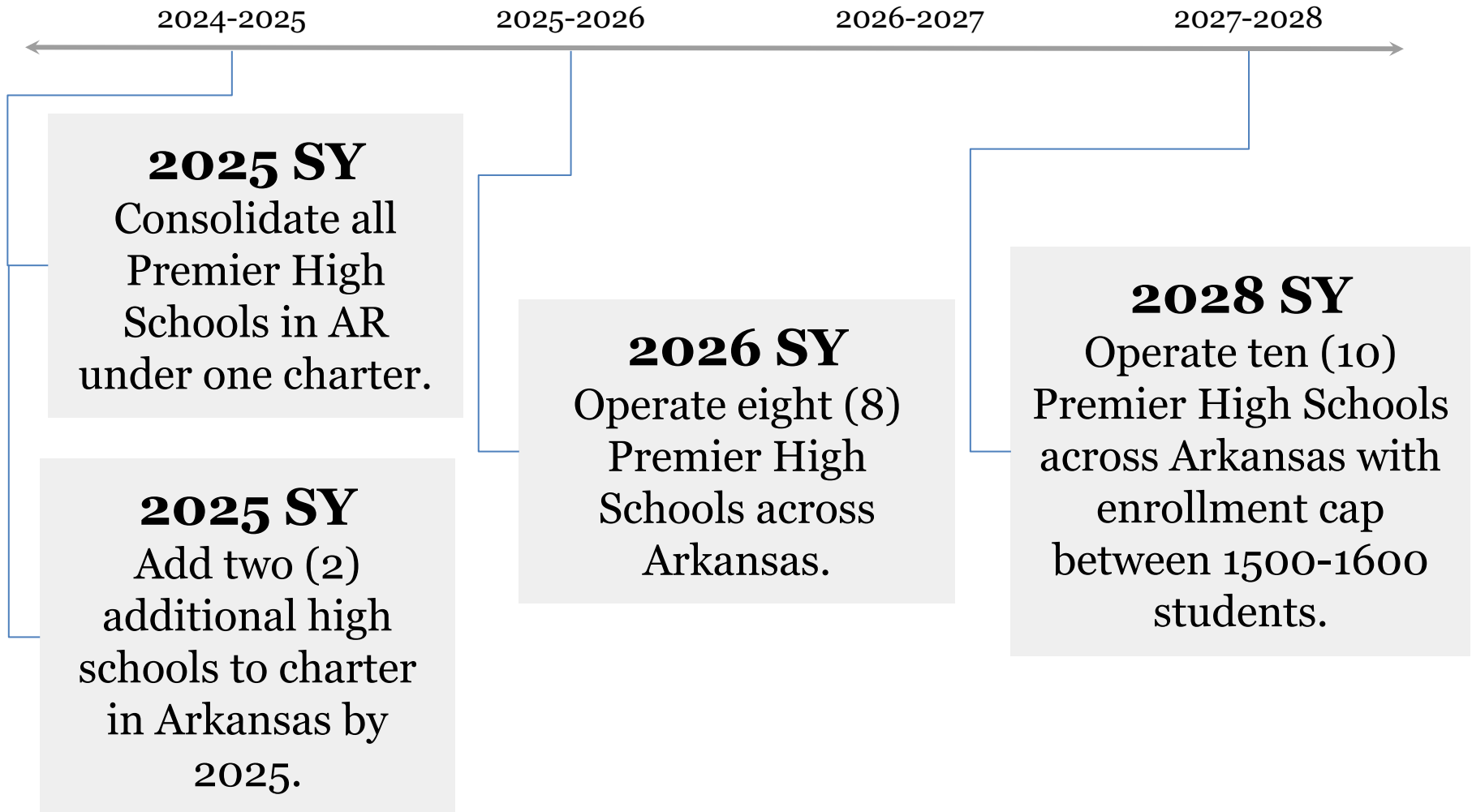
Student engagement and parental engagement is challenging, but rewarding when there is a healthy rapport and effective communication.

Mutual **ACCOUNTABILITY, EFFECTIVE COMMUNICATION,** and **FLEXIBILITY** are essential to student outcomes.

“Education is not a one size fits all, it must be **PERSONALIZED!**”



Long-Term Goals for Premier High Schools of AR



Long-Term Goals

Continue to partner and build relationships with community partners and local school district.

Continue to strive to meet all charter goals outlined in charter agreement with the state of Arkansas.

Provide quality assurance and adequate support for schools located throughout AR.



Benefits to Parents, Students, & the Community

- Additional seats will be available to parents and students seeking the Premier High School model.
- Students who reside in close proximity to a Premier High School will have the opportunity to engage in an innovative, encouraging learning environment.
- Arkansas students and parents who are seeking a personalized learning environment can enroll in Premier High School.



ResponsiveEd AR PREMIER GRADUATES



Inaugural Graduating
Class: **10** graduates
(2014)

Anticipate awarding over
100 high school
diplomas this year

More than **250** AR
Premier graduates to date

Amendment Request

- 1) Enrollment Cap:** PHS of Arkansas is seeking to increase the overall enrollment cap for the charter from 875 to 975 students.
- 1) To amend the enrollment cap of each school to reflect the enrollment trends and meet the demands of the various schools within the charter.



Premier High School



“Where the success of our students matter the most”

“Aiming to be responsive to the needs of the Arkansas communities”

Questions?

