

CEDAR HILL ISD 2024



BOND PROGRAM UPDATE
JULY 21, 2025



Presentation Overview

- **Bond Program Update**
 - **Master Budget & Schedule**
 - **Projects in Design**
 - **Projects in Construction**
 - **Campus-Wide Projects**



Wayne Warren & Mellonee Rheams

Bond Program Update

General

- Master Budget - Monitoring budget to align with project Master schedule
- Master Schedule - Monitoring project timelines in partnership with Huckabee to ensure adherence to key milestones
- Ongoing Meetings with Huckabee and CORE to review design and construction progress and any issues of concern
- Ongoing meetings with District Leadership to develop and implement effective processes for the bond program
- Provide continuous updates to Facilities Committee and Bond Oversight Committee

Bond Program Update

Master Budget

CEDAR HILL ISD 2024



[Request support](#) - [My Projects](#) - [Settings](#) - [Videos](#) - [Logout](#) (La

Master Budget

Summary

Reports

Accounting

Construction

Setup

Show Projected?

Master Budget

Budget

Commitments

Actual

A Initial Budget	B Budget Changes	C Current Budget A+B	D Contracts, POs, Expenses	E Change Orders	F Pending Changes	G Committed Cost D+E+F	H Projected To Complete	I Projected (Over)/Under C-(G+H)	J Incurred Costs	K Balance To Finish (G-J)
▼ A. 001 - Cedar Hill High School	\$69,041,295	\$0	\$69,041,295	\$0	\$0	\$0	\$0	\$69,041,295	\$0	\$0
▼ B. 003/043 - Collegiate Middle/High School	\$31,634,483	\$0	\$31,634,483	\$0	\$0	\$0	\$0	\$31,634,483	\$0	\$0
▼ C. 041 - Permenter Middle School	\$20,494,319	\$0	\$20,494,319	\$0	\$0	\$0	\$0	\$20,494,319	\$0	\$0
▼ D. 042 - Coleman Middle School	\$22,443,115	\$0	\$22,443,115	\$0	\$0	\$0	\$0	\$22,443,115	\$0	\$0
▼ E. 102 - Plummer Elementary School	\$13,722,603	\$0	\$13,722,603	\$680,319	\$0	\$680,319	\$0	\$13,042,284	\$59,610	\$620,709
▼ F. 104 - High Pointe Elementary School	\$14,846,800	\$0	\$14,846,800	\$11,230,125	\$86,189	\$11,316,314	\$2,740	\$3,527,746	\$1,038,778	\$10,277,536
▼ G. 105 - Highlands Elementary School	\$17,593,993	\$0	\$17,593,993	\$0	\$0	\$0	\$0	\$17,593,993	\$0	\$0
▼ H. 107 - Waterford Oaks Elementary School	\$16,607,516	\$0	\$16,607,516	\$861,863	\$0	\$861,863	\$0	\$15,745,653	\$284,368	\$577,495
▼ I. 108 - Lake Ridge Elementary School	\$15,542,538	\$0	\$15,542,538	\$0	\$0	\$0	\$0	\$15,542,538	\$0	\$0
▼ J. 110 - Collegiate Prep Elementary School	\$16,599,378	\$0	\$16,599,378	\$0	\$0	\$0	\$0	\$16,599,378	\$0	\$0
▼ K. 994 - Lacy Enrollment Center	\$8,534,632	\$0	\$8,534,632	\$0	\$0	\$0	\$0	\$8,534,632	\$0	\$0
▼ L. 995 - L. Kim Lewis Auxilliary Services Center	\$21,739,328	\$0	\$21,739,328	\$812,411	\$450,450	\$1,262,861	\$0	\$20,476,467	\$653,203	\$609,658
Total	\$268,800,000	\$0	\$268,800,000	\$13,584,719	\$536,639	\$14,121,357	\$2,740	\$254,675,903	\$2,035,959	\$12,085,398

BOND PROGRAM UPDATE



Bond Program Update

Master Schedule

Project Name	2024						2025						2026						2027						2028						2029																																																																																																																																																																																																																																																																																																																																																																																																																																																																																																																																																																																																																																																																																																																																																								
	May	June	July	August	September	October	November	December	January	February	March	April	May	June	July	August	September	October	November	December	January	February	March	April	May	June	July	August	September	October	November	December	January	February	March	April	May	June	July	August	September	October	November	December																																																																																																																																																																																																																																																																																																																																																																																																																																																																																																																																																																																																																																																																																																																																											
Safety/Security Cameras									Design & Procurement (7 months)						Construction (12 Months)																																																																																																																																																																																																																																																																																																																																																																																																																																																																																																																																																																																																																																																																																																																																																																								
Playgrounds									Design & Procure. (5 months)		Const. (3 M)																																																																																																																																																																																																																																																																																																																																																																																																																																																																																																																																																																																																																																																																																																																																																																												
Public Address Systems									Design & Procure. (5 months)		Construction (6 months)																																																																																																																																																																																																																																																																																																																																																																																																																																																																																																																																																																																																																																																																																																																																																																												
High Pointe ES			Design & Procurement (11 months)						Const. w/Internal Swing Space (14 months)*																																																																																																																																																																																																																																																																																																																																																																																																																																																																																																																																																																																																																																																																																																																																																																														
L. Kim Lewis Auxiliary Services Center/Transportation Facility					Design & Procurement (12 months)						Construction (14 months)																																																																																																																																																																																																																																																																																																																																																																																																																																																																																																																																																																																																																																																																																																																																																																												
Waterford Oaks ES								Design & Procurement (12 months)						No Mid-Year Move						Const. w/TLC as Swing Space (14 months)																																																																																																																																																																																																																																																																																																																																																																																																																																																																																																																																																																																																																																																																																																																																																																			
Lacy Enrollment Center Phase 1 to support Strive & Hilltop									Design & Procurement (6 Months)				Construction (7 Months)																																																																																																																																																																																																																																																																																																																																																																																																																																																																																																																																																																																																																																																																																																																																																																										
Plummer ES									Design & Procurement (12 months)												Const. w/Internal Swing Space (14 months)*																																																																																																																																																																																																																																																																																																																																																																																																																																																																																																																																																																																																																																																																																																																																																																		
Lacy Enrollment Center Phase 2									Design & Procurement (11 months)						Construction (12 months)																																																																																																																																																																																																																																																																																																																																																																																																																																																																																																																																																																																																																																																																																																																																																																								
Collegiate Prep ES													Design & Procurement (12 months)												Const. w/TLC as Swing Space (12 months)																																																																																																																																																																																																																																																																																																																																																																																																																																																																																																																																																																																																																																																																																																																																																														</

Projects In Design

L. Kim Lewis Auxiliary Services Center/Transportation Facility

- Design Development (DD) Phase
- Currently in Planned Development (PD) process with City:
 - Two (2) Submittals to date
 - First round of comments received on 6/24/25
- CD Phase pending PD process



Rendering provided by Huckabee

Projects In Design

Waterford Oaks Elementary

- Design Development (DD) Phase
- Huckabee held a series of Visioning Meetings with District Leadership
- 100% DD Presentation scheduled for 8/14/25 to Facilities Committee
- Design Team conducted site visit with CHISD on 7/14/25 to evaluate Trail Pathway between Waterford Oaks ES and Bessie Coleman



Projects In Design

Plummer Elementary

- Schematic Design (SD) Phase
- Huckabee held a series of Visioning Meetings with District Leadership
- 100% SD Presentation scheduled for 8/14/25 to the Facilities Committee
- DD Phase by late August 2025



Projects In Design

Lacy Enrollment Center

- **Phase 1:** Construction Documents (CD) Phase is 95% complete
 - Scope includes Roofing, HVAC and minor interior renovations
 - Preparing for STRIVE and Hilltop students in August 2026
- **Phase 2:** Construction Documents (CD) Phase began on 7/17/25
 - Scope will include new windows, replace East concrete parking lot, full restroom remodel, installation of fire sprinkler system, replace fire alarm system and other minor enhancements



Projects In Construction

Playgrounds

- Installed new playgrounds at all Elementary Schools
- Construction began on 5/27/25
- Construction to be completed by 8/8/25
- Vendor is Lea Park and Play



Projects In Construction

High Pointe Elementary

- Phase 1 Renovation (*PreK & Kinder*)
 - Anticipated Completion is 7/31/25
- Phase 2 Demolition (*3rd-5th Grade*)
 - 50% Complete; Anticipated Completion 11/21/25
- Phase 2A (*Gym*) - Winter Break 2025
- Phase 3 (*Fine Arts Wing*) - November 2025 through August 2026
- Phase 4 (*Admin & Cafeteria*) - June 2026 through August 2026
- Project Completion including FF&E - July 2026

Projects In Construction

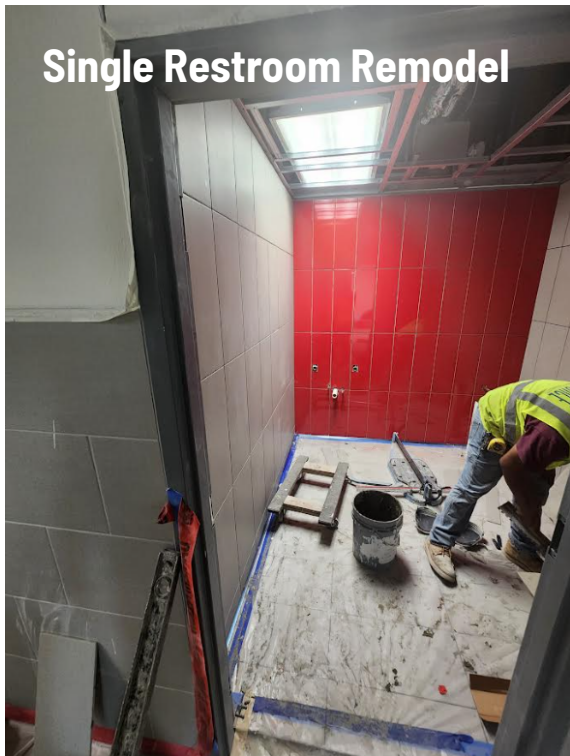
High Pointe Elementary (Phase 1)



Projects In Construction

High Pointe Elementary (Phase 1)

Single Restroom Remodel



Group Restroom Remodel

Campus-Wide Projects

- **Furniture, Fixtures and Equipment (FF&E):**
 - Showcase of sample furniture during District Staff Development Training on 8/5 and 8/6
 - TLC - Elementary Furniture displayed
 - Collegiate MS/HS - Middle and High School Furniture displayed
 - District staff able to provide feedback on options shown during showcase



Sample vendor layout at showcase

Campus-Wide Projects

- **Security Cameras:**

- Site visits conducted with District Staff and Security Consultant to confirm camera locations
- District to issue RFP to initiate the bidding process

- **Public Address (PA), Bells and Clocks:**

- District has selected the preferred PA, Bell, and Clock system for deployment across all campuses to improve communication and safety

CEDAR HILL ISD 2024



Questions & Answers

