



ROSEVILLE AREA SCHOOLS

Graduation and Postsecondary Report

May 26th, 2026



District Goals & Key Strategies



District Goal #1

Our graduates are prepared to achieve their goals and aspirations.

Strategies

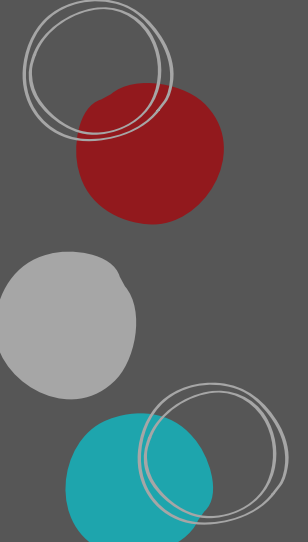
- **Ensure students are college and career ready.**
- **Deliver a challenging, joyful, and safe learning environment**
- **Deliver innovative, effective practices and systems**



District Goal #2

Our learners contribute to an equitable, caring society.

Strategies

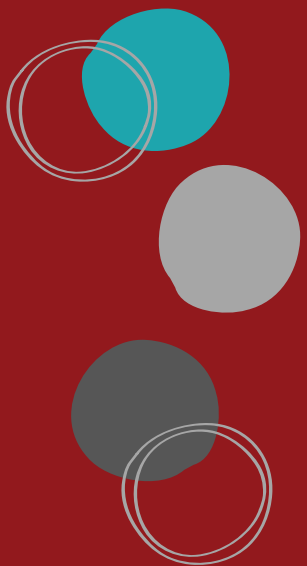
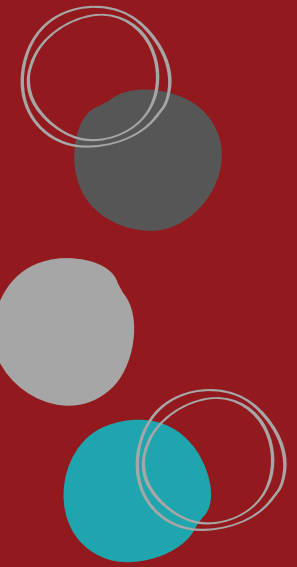
- Cultivate student engagement and joy in learning
 - Amplify student leadership and voice in decision making
 - **Prepare learners to be racially and socially responsive**
- 

District Goal #3

**We are a culturally responsive,
inclusive, anti-racist district.**

Strategies

- **Build a culture of belonging where all feel welcome, included, and safe**

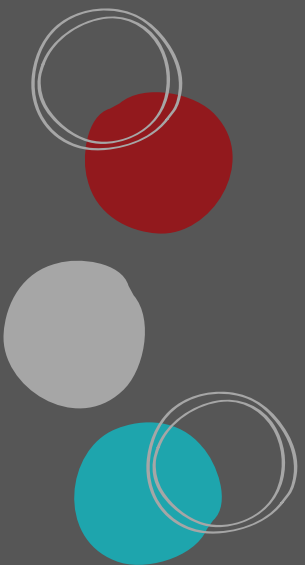
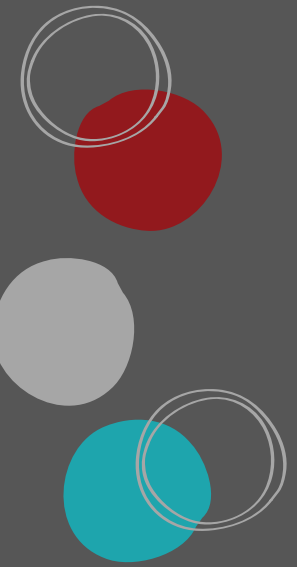


District Goal #4

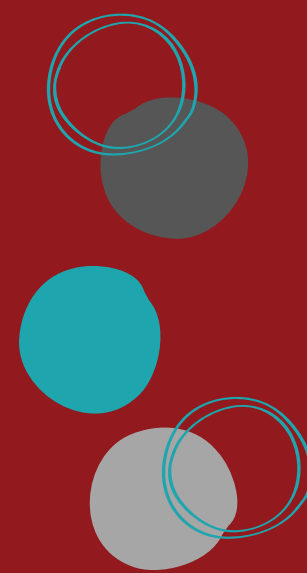
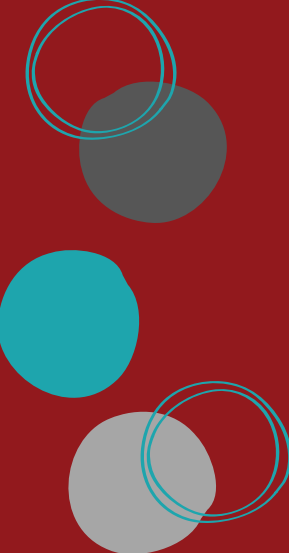
The community is united behind meeting student needs.

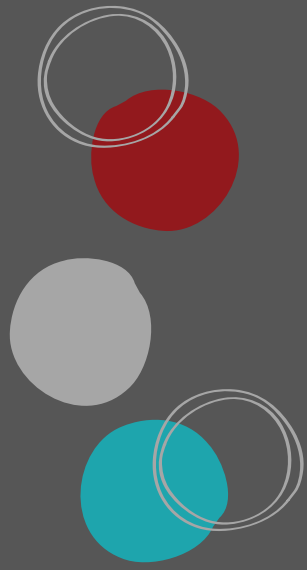
Strategies

- Partner with families and the community to support student success



Graduation 2025





Graduation Data

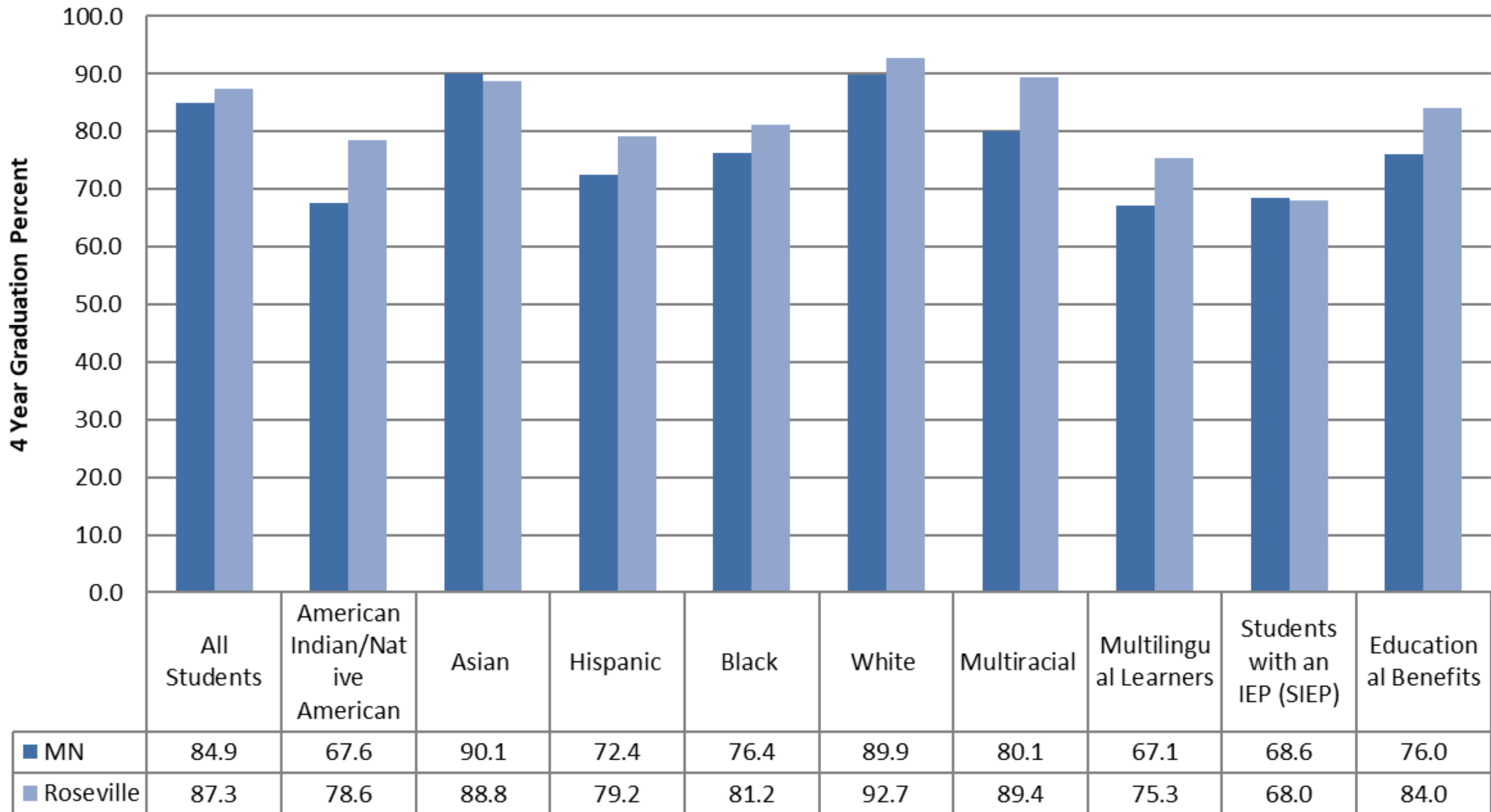
4-year cohort format

9th graders in school year 2021-22

**District data: Roseville Area High School and
Fairview Alternative High School**

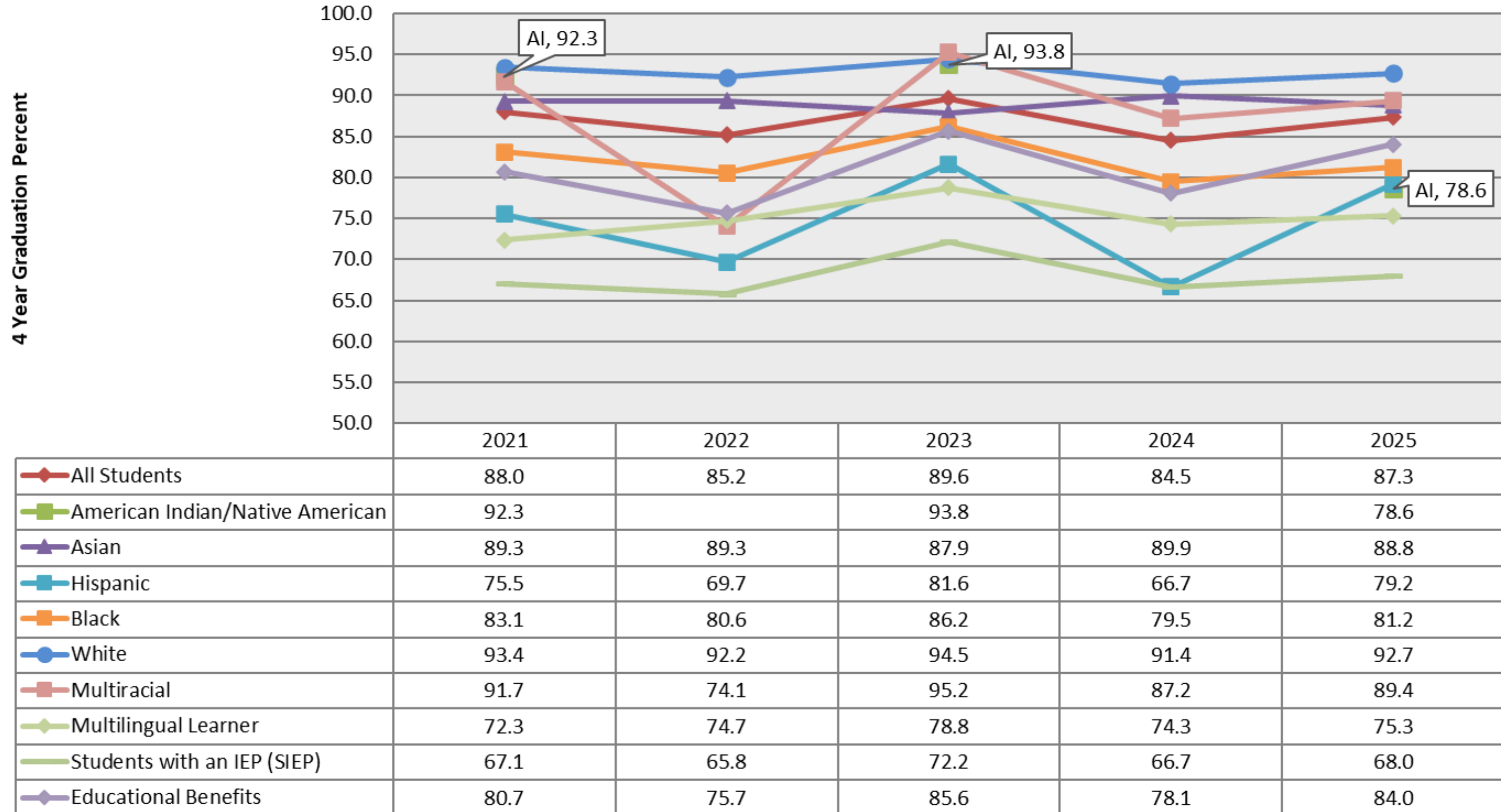
RAS compared to State

2025: 4 Year Graduation Data- MN and Roseville Area Schools



4 Year Graduation by Student Group

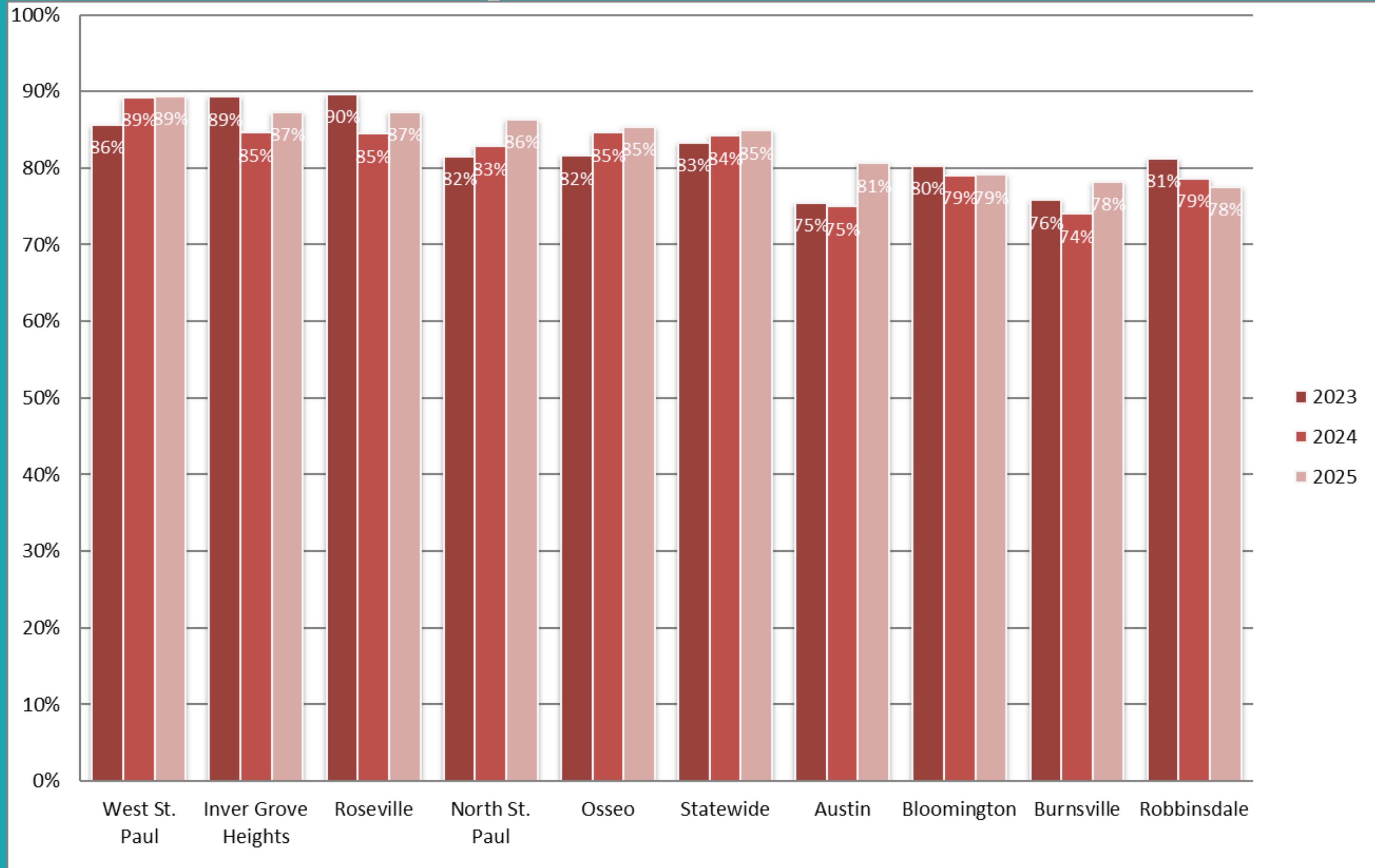
Roseville Area Schools Graduation Percentages by Student Group



Graduation Data- Number of Students

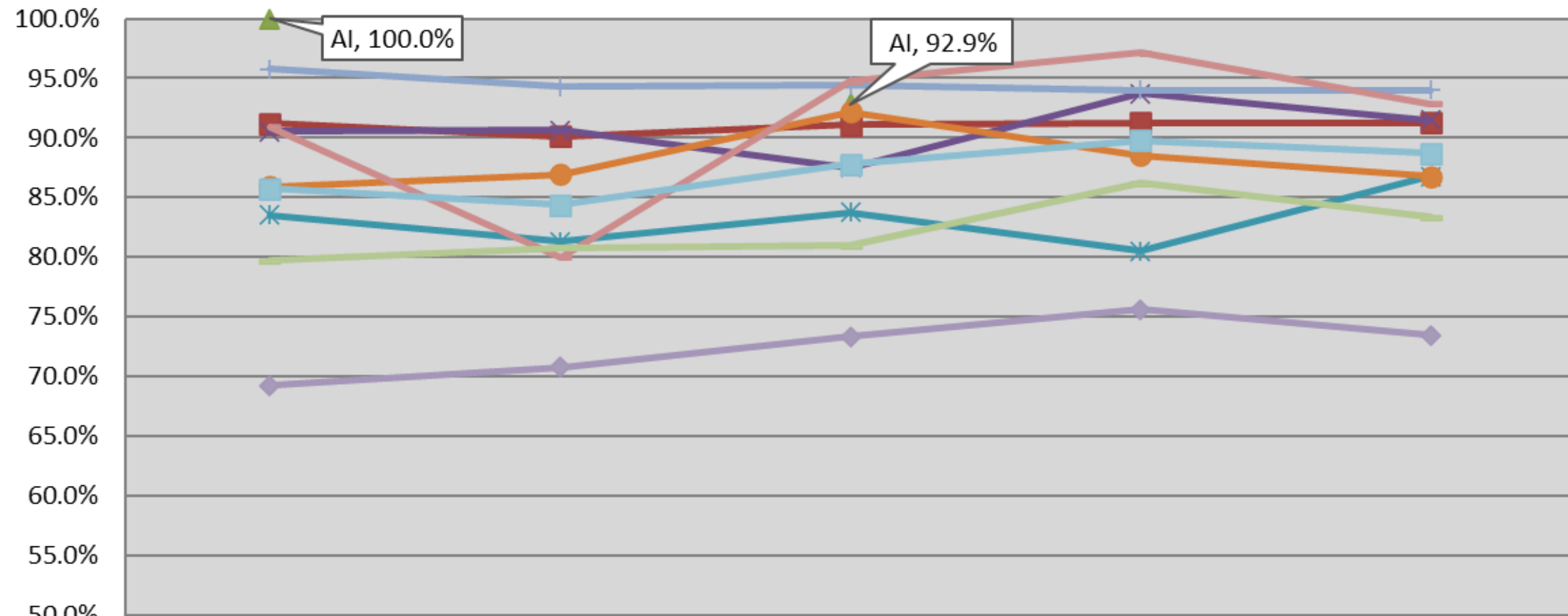
	<u>2021</u>	<u>2022</u>	<u>2023</u>	<u>2024</u>	<u>2025</u>
All Students	513	524	528	540	530
American Indian	12	*	15	*	11
Asian	108	92	94	107	87
Black	69	87	106	89	82
Hispanic	74	69	71	70	80
Multiracial	33	20	20	34	42
White	227	249	222	235	228
Students with an IEP (SIEP)	59	46	57	62	51
Educational Benefits	239	200	268	249	284
Multilingual Learner	68	63	51	52	58

Comparable Districts



RAHS 4 Year Graduation

RAHS 4 Year Graduation Percentages



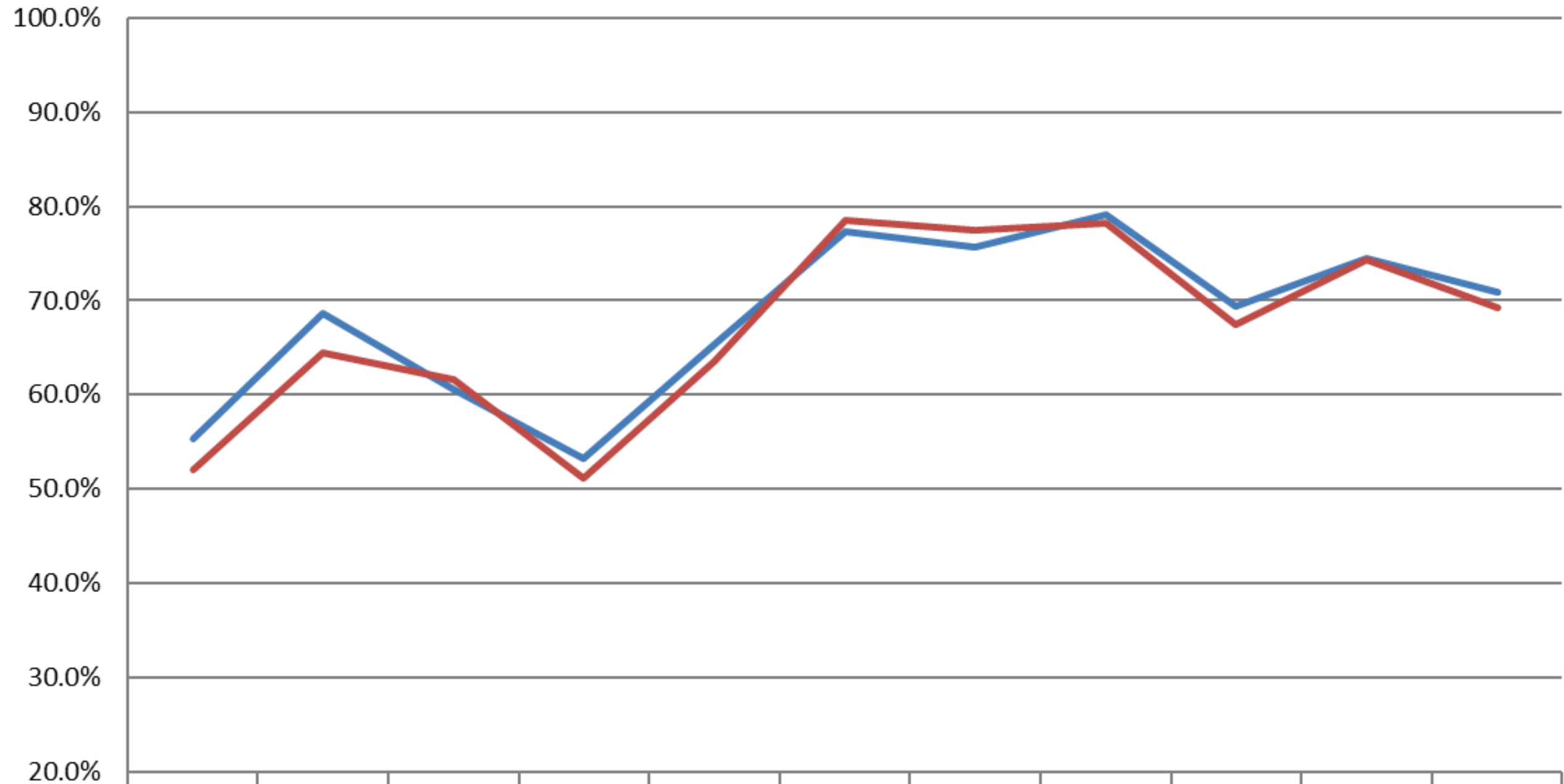
	2021	2022	2023	2024	2025
All Students	91.2%	90.1%	91.1%	91.3%	91.3%
American Indian/Native American	100.0%		92.9%		
Asian	90.5%	90.6%	87.5%	93.7%	91.5%
Hispanic	83.5%	81.3%	83.8%	80.5%	86.8%
Black/African American	85.9%	87.0%	92.2%	88.5%	86.8%
White	95.7%	94.3%	94.4%	94.0%	94.0%
Multiracial	90.9%	80.0%	94.7%	97.1%	92.9%
Multilingual Learners	79.7%	80.8%	81.0%	86.2%	83.3%
Students with an IEP (SIEP)	69.2%	70.8%	73.3%	75.6%	73.4%
Educational Benefits	85.8%	84.4%	87.8%	89.8%	88.7%

RAHS 4 Year Graduation- Number of Students

	<u>2021</u>	<u>2022</u>	<u>2023</u>	<u>2024</u>	<u>2025</u>
All Students	489	502	502	524	501
American Indian/Native American Students	11	*	13	*	*
Asian Students	105	87	91	104	86
Black Students	61	80	94	85	72
Hispanic Students	66	61	67	62	77
White Students	225	248	219	234	219
Multiracial	30	20	18	34	39
Students with an IEP (SIEP)	54	46	55	62	47
Educational Benefits	217	200	245	237	259
Multilingual Learners	59	63	51	50	55

FAHS 7 Year Graduation Data

FAHS Graduation Data- 7 Year Rate



	2015	2016	2017	2018	2019	2020	2021	2022	2023	2024	2025
All Students	55.4%	68.6%	60.6%	53.2%	65.4%	77.3%	75.7%	79.2%	69.4%	74.4%	70.9%
Educational Benefits	52.1%	64.4%	61.7%	51.2%	63.6%	78.6%	77.4%	78.3%	67.4%	74.4%	69.2%

FAHS Graduation Data

4 Year Graduation Category: All Students

	2015	2016	2017	2018	2019	2020	2021	2022	2023	2024	2025
FAHS	23.2%	25.0%	44.7%	37.0%	50.0%	52.3%	53.3%	38.6%	72.2%	42.9%	46.8%

5 Year Graduation Category: All Students

	2015	2016	2017	2018	2019	2020	2021	2022	2023	2024	2025
FAHS	24.9%	44.0%	51.9%	71.7%	63.2%	73.5%	63.8%	72.1%	64.3%	82.9%	52.2%

6 Year Graduation Category: All Students

	2015	2016	2017	2018	2019	2020	2021	2022	2023	2024	2025
FAHS	63.0%	51.5%	52.1%	63.5%	77.3%	70.3%	77.6%	68.0%	74.4%	69.1%	82.9%

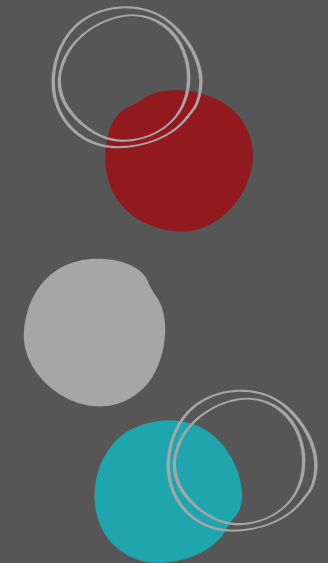
7 Year Graduation Category: All Students

	2015	2016	2017	2018	2019	2020	2021	2022	2023	2024	2025
FAHS	55.4%	68.0%	60.6%	53.2%	65.4%	77.3%	75.7%	79.2%	69.4%	74.4%	70.9%



Graduation Data Summary

Roseville Area Schools

- **Districtwide graduation percentages were up ~3 percentage points**
 - **District outperformed the state by ~2.5 percentage points**
 - **Nearly all of student groups performed above their statewide group**
 - **District is second among comparables**
- 

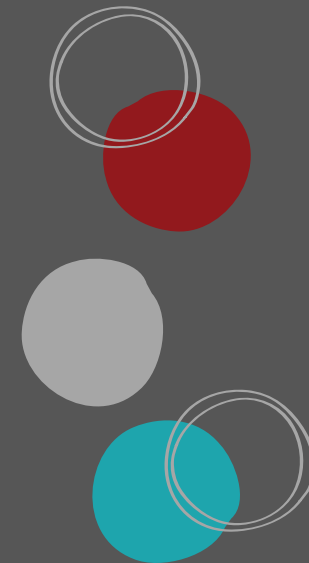


Graduation Data Summary

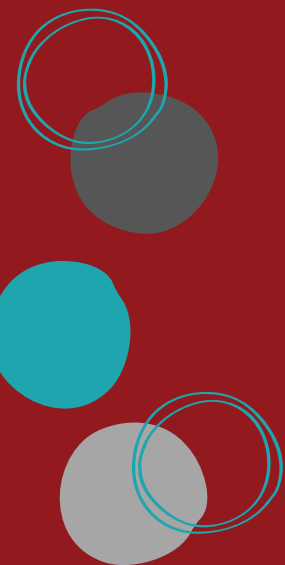
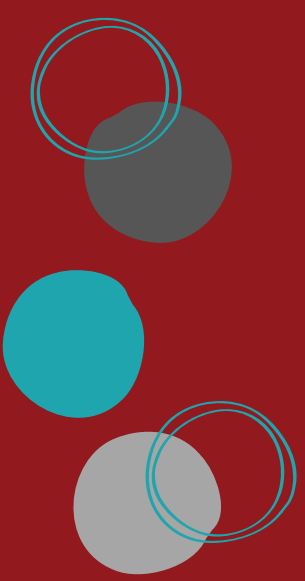
Roseville Area High School

- Remained even with 2024 at 91.3% graduation rate
- Ranked 2nd among comparable districts
- Hispanic students had largest increase from 2024

Fairview Alternative High School

- 7 year rate decreased from previous year by ~3.5 percentage points
 - 4 year and 6 year rates increased from 2024
 - 5th among 9 comparables
- 

Postsecondary Data





Postsecondary Data Overview

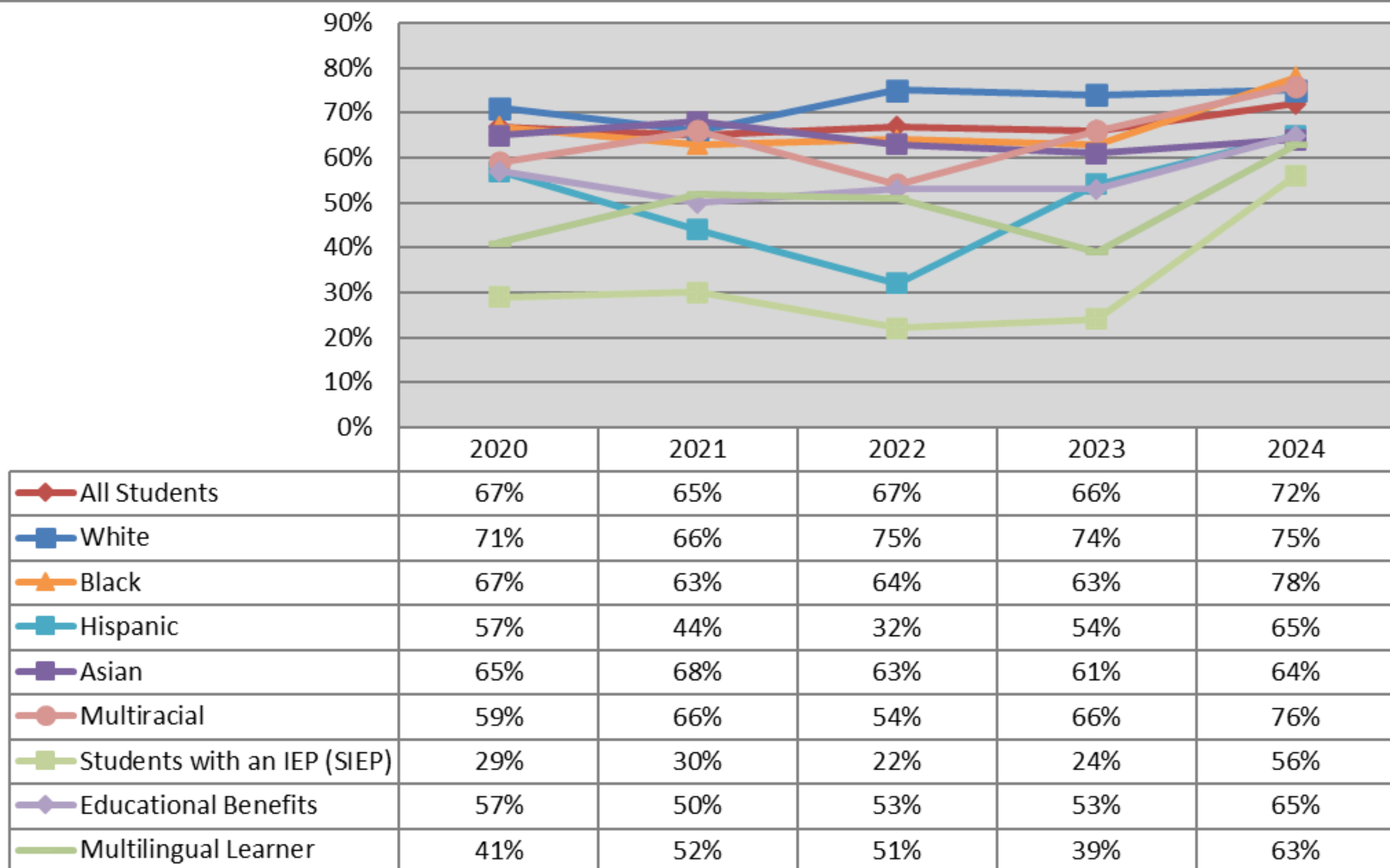
Postsecondary School Enrollment

Developmental Course Enrollment

Graduates Entering the Workforce



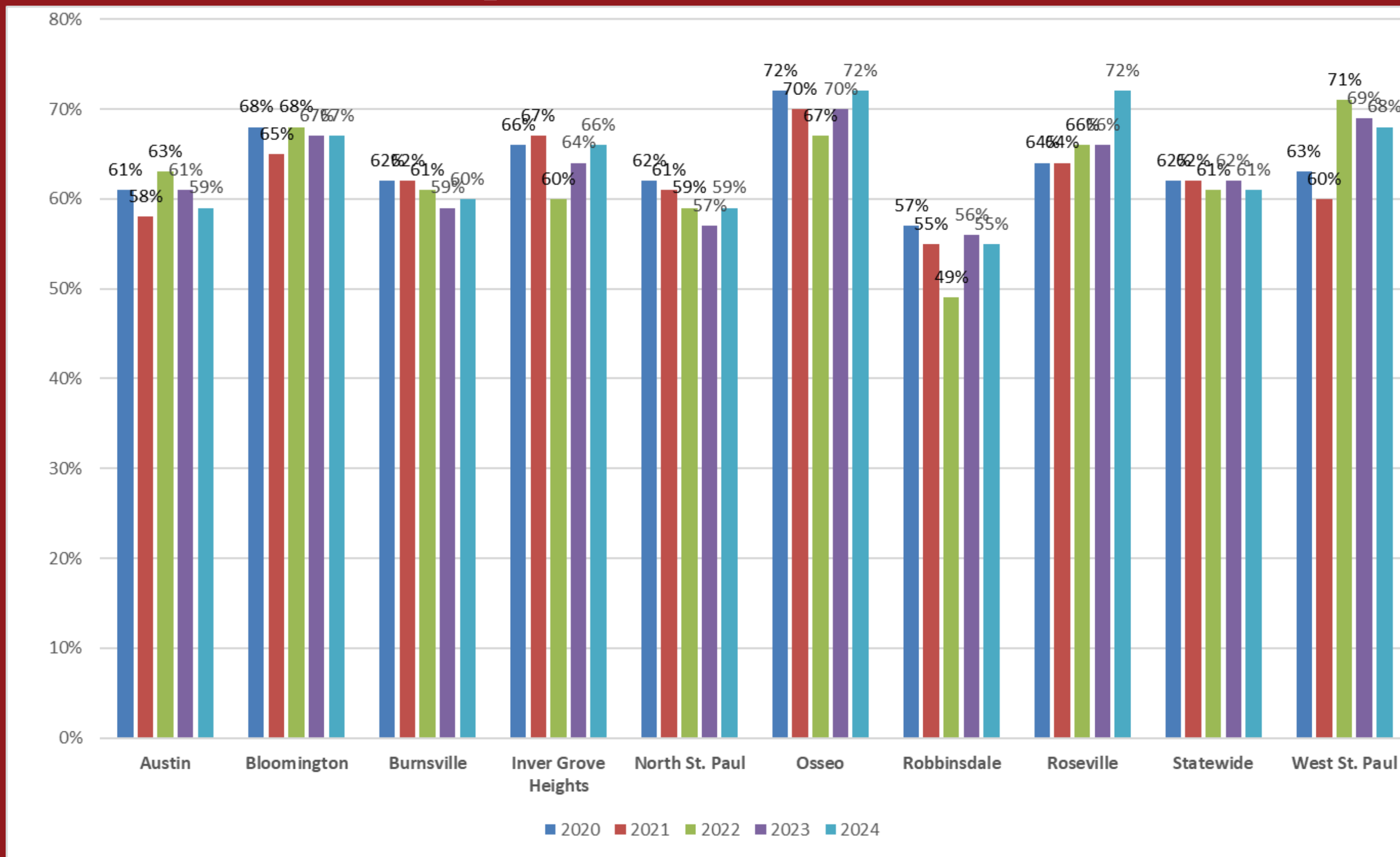
Enrollment in Postsecondary School



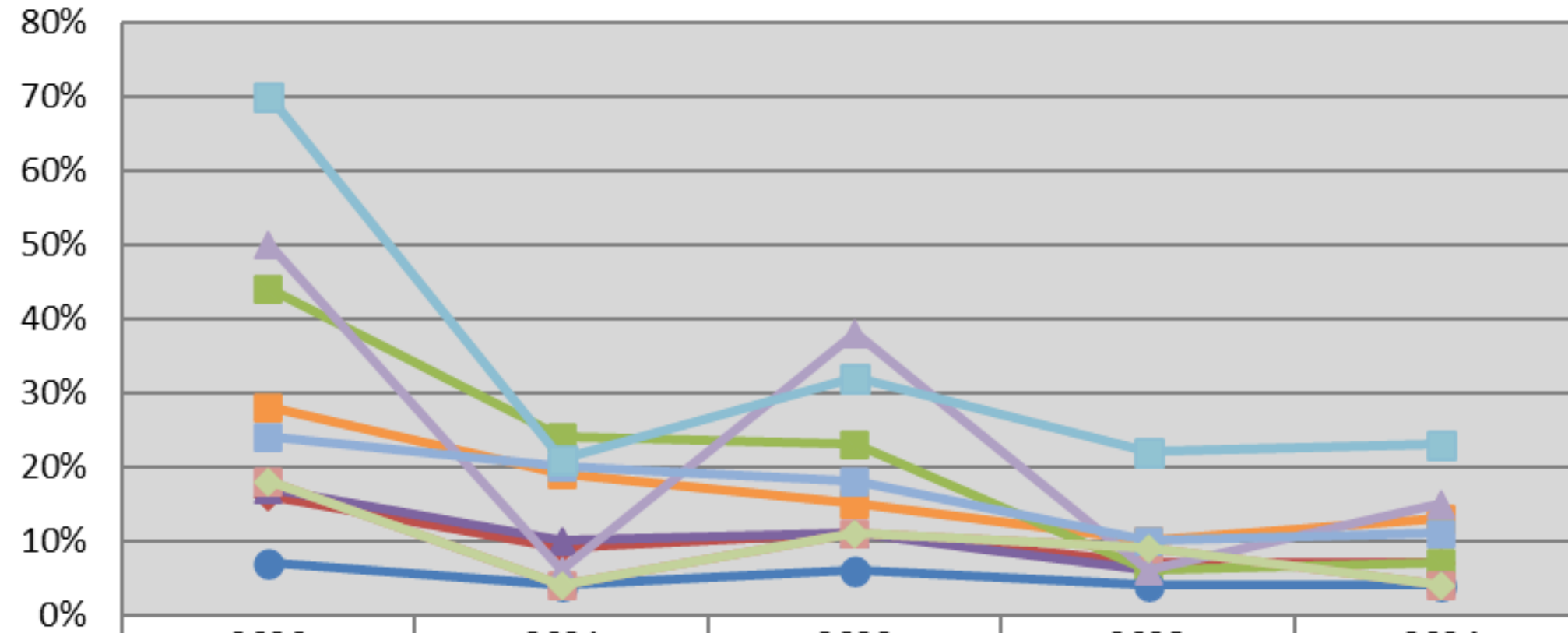
Enrollment in Postsecondary School- Number of Students

	<u>2020</u>	<u>2021</u>	<u>2022</u>	<u>2023</u>	<u>2024</u>
All Students	332	344	364	360	397
American Indian/Native American Students	*	*	*	*	*
Asian Students	85	76	61	57	69
Black Students	62	48	58	69	71
Hispanic Students	21	34	25	44	48
White Students	160	154	191	167	180
Multiracial	23	21	13	21	29
Students with an IEP (SIEP)	14	16	*	13	31
Educational Benefits	106	91	91	136	144
Multilingual Learners	17	29	28	14	26

Enrollment in Postsecondary School-Comparable Districts

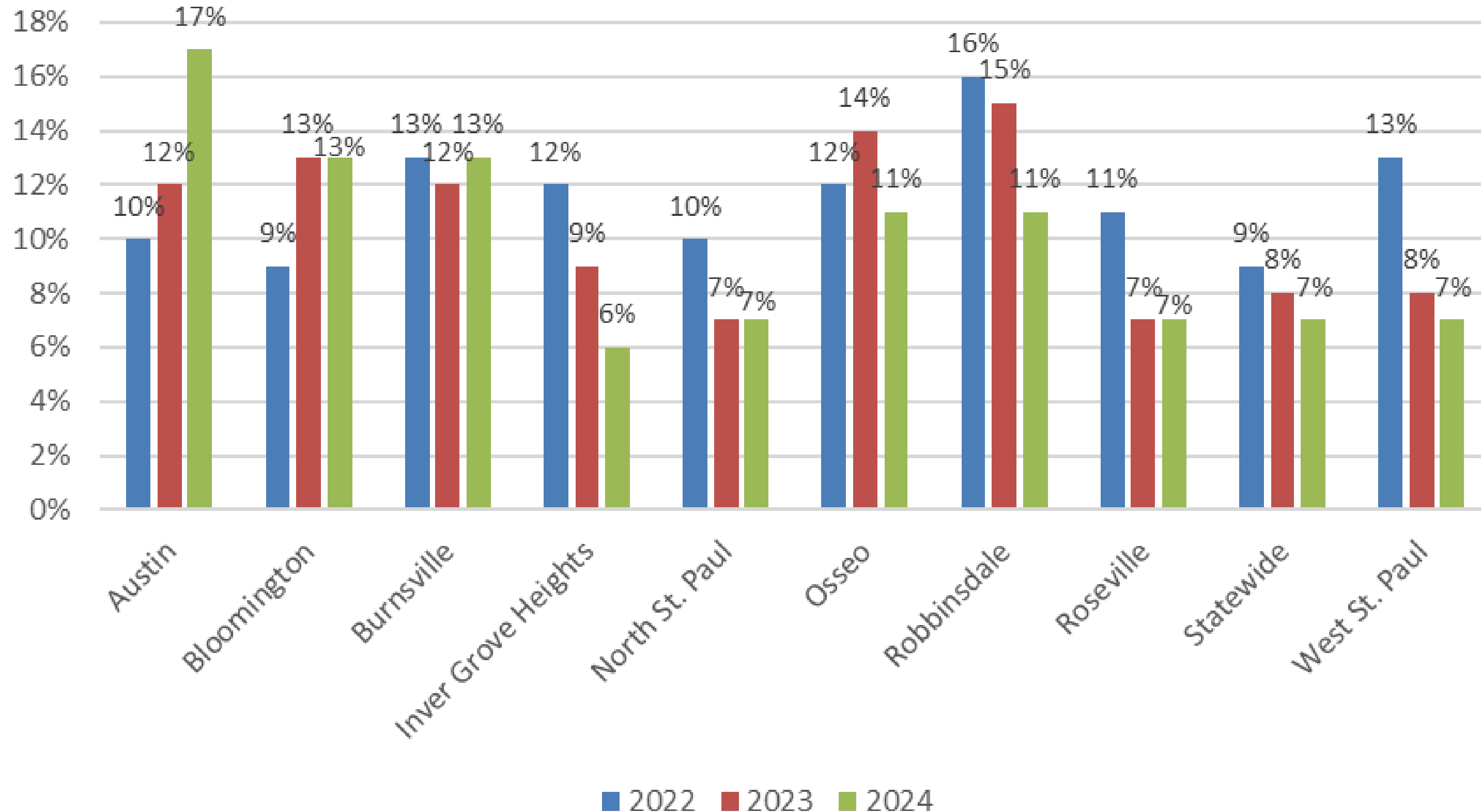


Developmental Course Enrollment



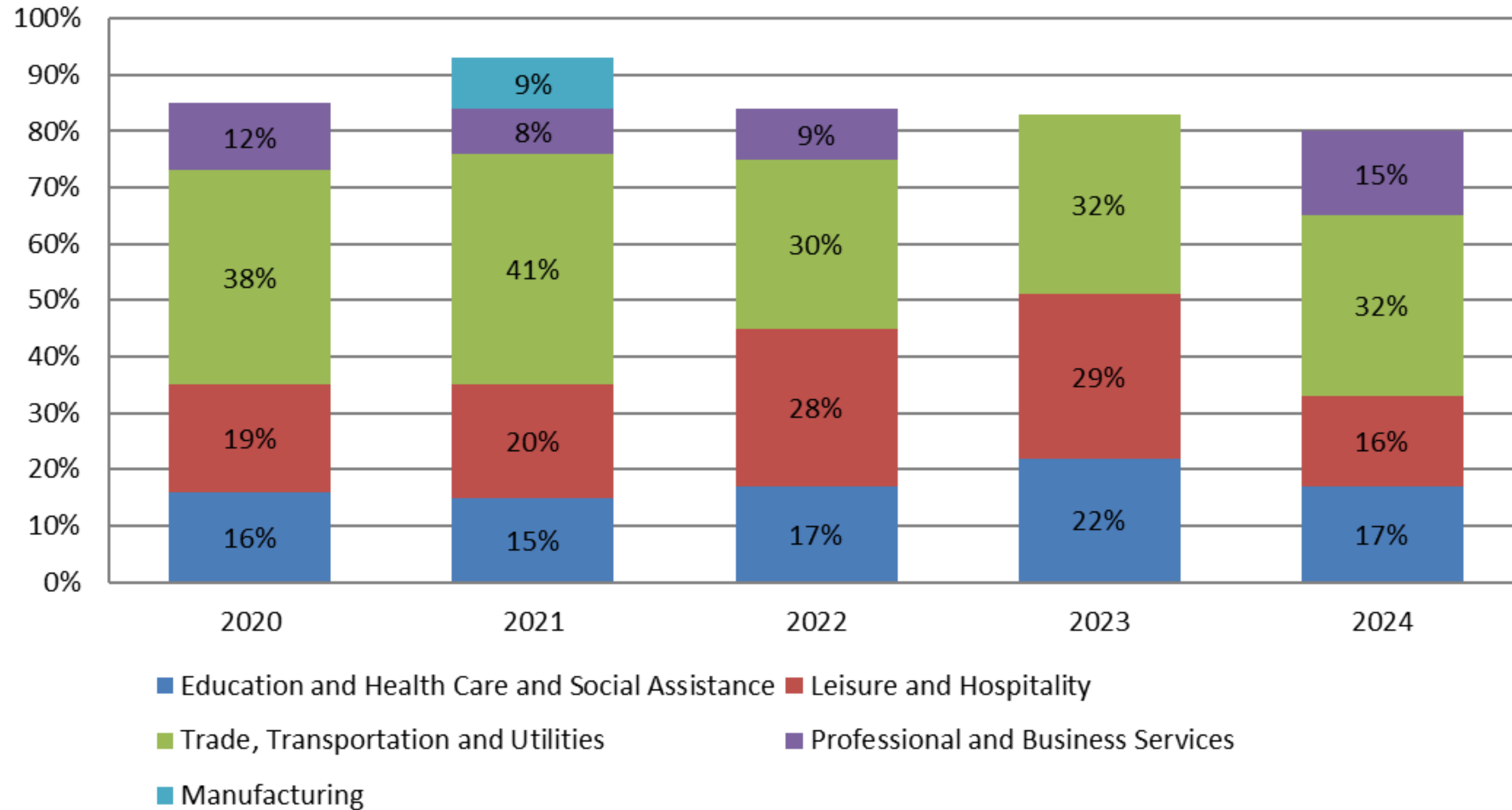
	2020	2021	2022	2023	2024
All Students	16%	9%	11%	7%	7%
American Indian					
Asian	17%	10%	11%	6%	
Black	28%	19%	15%	10%	13%
Hispanic	44%	24%	23%	6%	7%
White	7%	4%	6%	4%	4%
Multiracial	18%	4%	11%	9%	4%
Students with an IEP	50%	6%	38%	6%	15%
Educational Benefits	24%	20%	18%	10%	11%
Multilingual learners	18%	4%	11%	9%	4%

Developmental Course Enrollment- Comparable Districts



Entering the Workforce

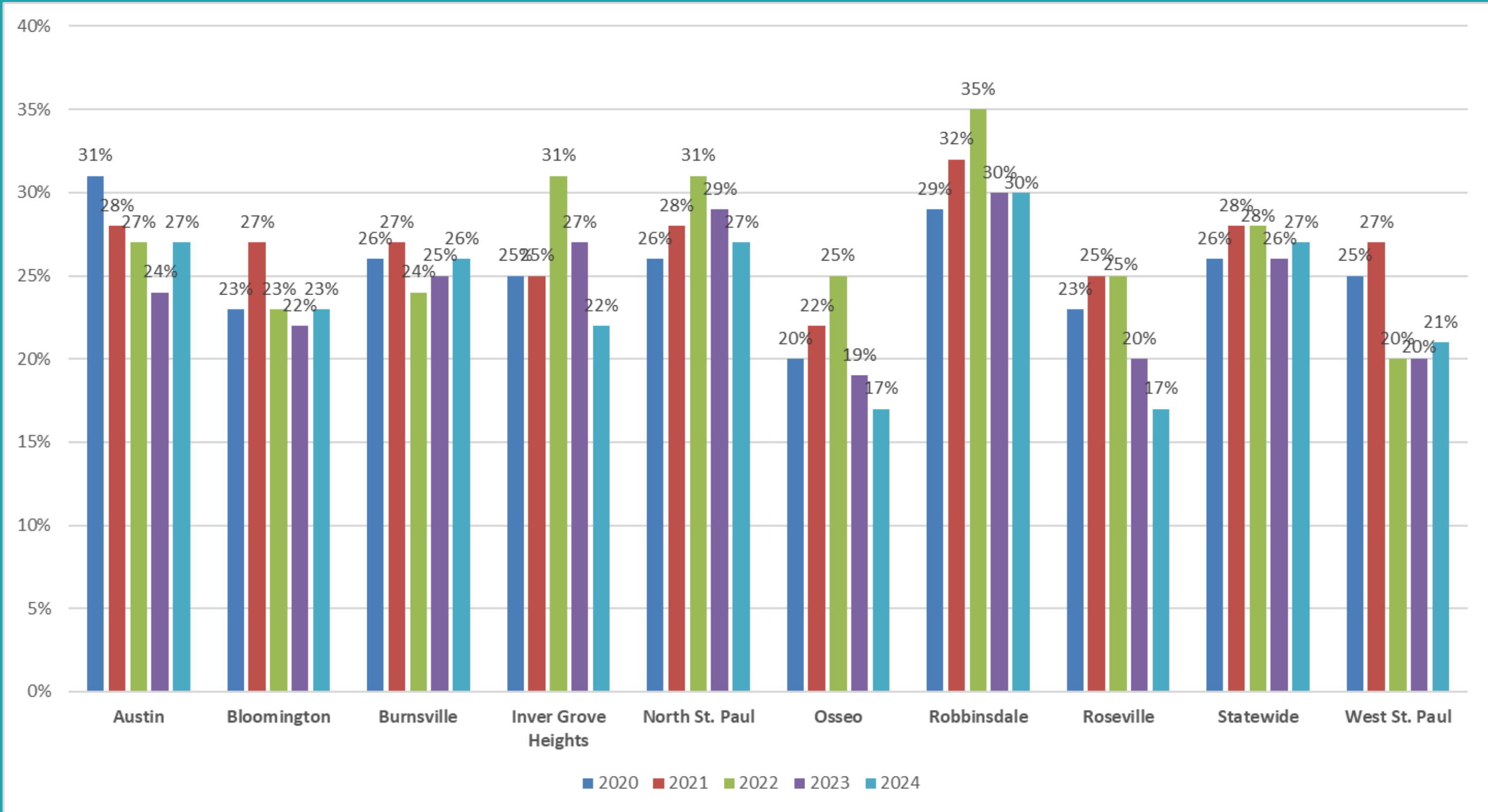
Students Entering the Workforce after Graduation



Entering the Workforce

Workforce Area	2020	2021	2022	2023	2024
Education and Health Care and Social Assistance	17	18	22	24	16
Leisure and Hospitality	20	25	36	32	15
Trade, Transportation and Utilities	40	50	38	35	30
Professional and Business Services	13	10	12		14
Manufacturing		11			

Entering the Workforce- Comparable Districts



Entering the Workforce or Postsecondary School by Race

	2020		2021		2022		2023		2024	
	BIPOC	White	BIPOC	White	BIPOC	White	BIPOC	White	BIPOC	White
Employed	20%	18%	26%	20%	29%	17%	22%	18%	18%	16%
Enrolled in Postsecondary	62%	66%	59%	66%	54%	75%	60%	74%	69%	75%



Postsecondary Data Summary

Postsecondary School Enrollment

- Enrollment increased significantly by 6 percentage points
- Significant increases for Students with an IEP and Multilingual Learners
- Continued gap between male and female identifying students in enrollment

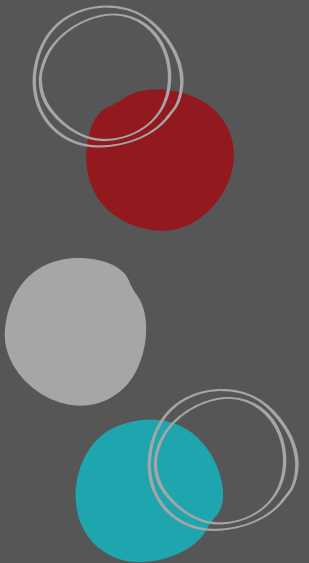
Developmental Courses- Post Secondary Schools

- Remained even with the previous year
 - Large decrease for Multilingual Learners
- 



Postsecondary Data Summary

Graduates Entering the Workforce

- **17% of students entered the workforce in 2024**
 - **Increased during COVID and years after, now showing decreases**
 - **Roseville students entered the Fields of**
 - **Trades, Transportation, and Utilities**
 - **Leisure and Hospitality**
 - **Education, Health Care, and Social Assistance**
 - **Professional and Business Services**
- 

Questions and Discussion

