

*Denton
Independent
School
District*

Quarterly
Report
2Q17



*Learn from Yesterday...
Understand Today...
Plan for Tomorrow*



TEMPLETON
DEMOGRAPHICS



Economic Conditions – DFW Area (June 2017)

2.5%

88,220 new jobs
National rate 1.4%



Job Growth

Unemployment Rate



U.S. 4.5%
Texas 4.7%
DFW MSA 4.0%
Denton 3.6%

-0.2%

31,254

1,692 more starts than 2Q16



Annual Home Starts





Local Economic Update



WinCo Distribution Center Opens

- WinCo opened a distribution center in early 2017 that will employ 165 people when fully staffed
- The distribution center marked the largest economic development project in Denton's history
- The \$135 million, 800,000 sq ft center on S Western Blvd will provide produce and supplies to DFW area WinCo's
- The center also has an additional 130,000 sq.ft. slated for future expansion

Rayzor Ranch Adds Major Tenants

- Rayzor Ranch is expanding tenants with Tuesday Morning, Marshalls and Rooms to Go
- Additional new tenants include In-N-Out Burger, Firehouse Subs and Luxe Nail Spa
- Alamo Draft House and Andy B's Entertainment and Bowling Center are scheduled to open in Rayzor Ranch by the end of 2018
- The Embassy hotel is also under construction, with a 70,000 sq.ft. convention center which will be used by the Denton Convention and Visitor Bureau to promote businesses and tourism



EMBASSY SUITES
HOTELS®





Local Economic Update



Ranch View Surgical Hospital Breaks Ground

- The Ranch View Surgical Hospital started construction on their new \$12.7 million facility
- The 44,700 sq.ft. center is located on I-35 and Crawford Rd
- The facility will have an emergency department, MRI, CT Scans and X-Ray and will focus on orthopedics
- Construction is set to be completed fall 2017

Additional Denton Area Development

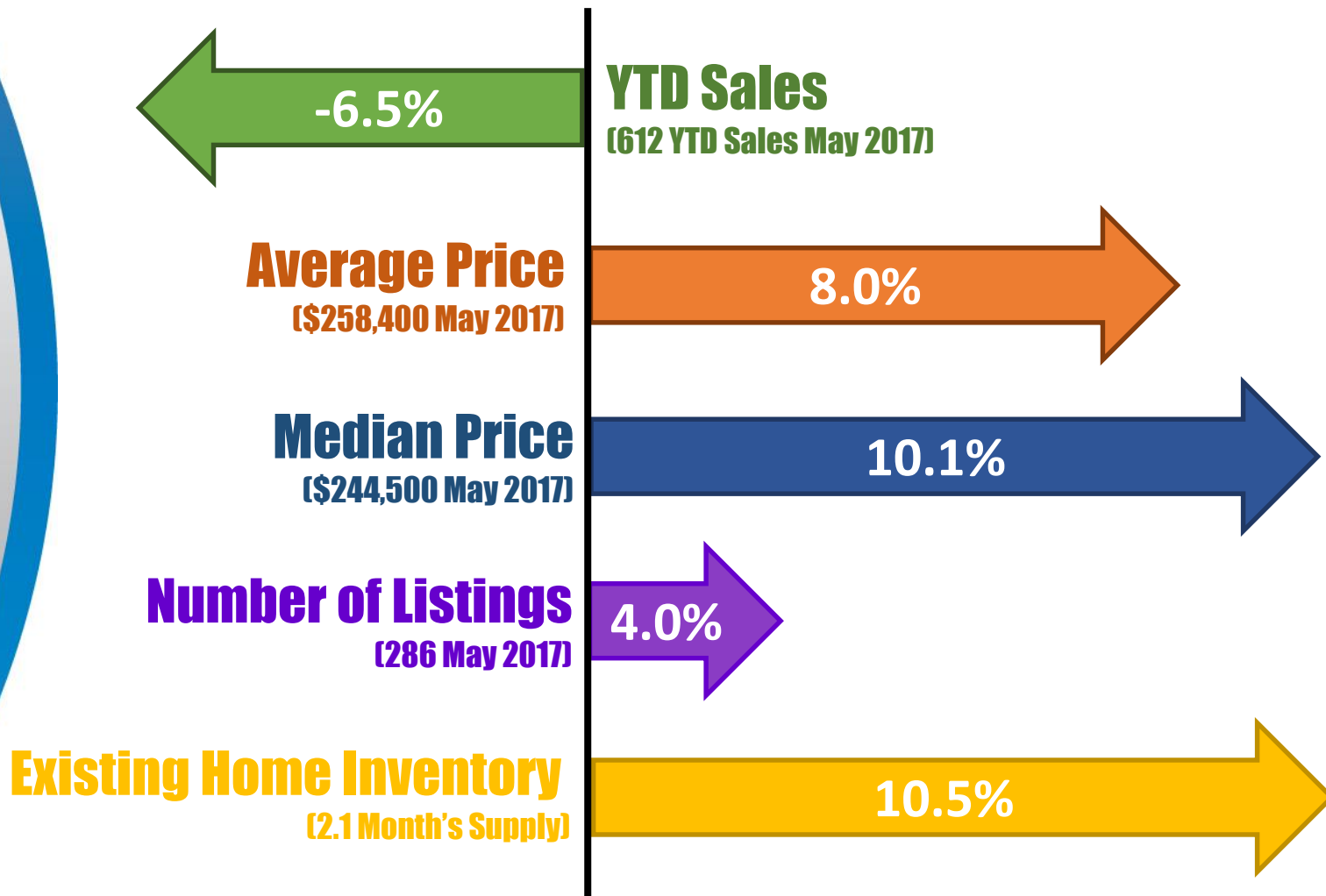
- Med-Trans, a provider of emergency helicopter transportation relocated its headquarters and hangar from Lewisville to the Denton Municipal Airport
- The former Old West Café on Dallas Drive is turning into Cartwright Café's second Denton location. The Café is set to open August 2017
- An Aldi Food Store is under construction on Ector Street
- A \$5 million, 87,900 sq.ft. storage facility broke ground on Blake Street
- Taco Cabana near Golden Triangle Mall is now open
- UNT started construction on their new \$70 million College of Visual Arts and Design, which will open for the fall 2018 semester





Denton Housing Market

Year Over Year Comparisons





DFW New Home Ranking Report

ISD Ranked by Annual Closings – 2Q17

Rank	District Name	Annual Starts	Annual Closings	VDL	Future
1	Frisco ISD	2,576	2,597	4,359	6,639
2	Prosper ISD	2,808	2,399	5,432	26,728
3	Denton ISD**	1,813	1,866	2,283	28,645*
4	Northwest ISD	2,005	1,691	1,664	23,656
5	Dallas ISD	1,800	1,496	2,091	6,593
6	Lewisville ISD	1,234	1,344	1,677	4,561
7	Little Elm ISD	1,137	1,057	1,532	3,646
8	Rockwall ISD	953	974	1,948	8,190
9	Wylie ISD	813	821	1,127	4,150
10	McKinney ISD	835	819	1,495	6,881
11	Eagle Mt.-Saginaw ISD	914	798	1,504	19,242
12	Keller ISD	725	791	749	1,716
13	Mansfield ISD	739	720	926	6,723
14	Crowley ISD	563	679	1,052	9,213
15	Forney ISD	810	654	1,501	13,496
16	Allen ISD	683	597	1,109	1,724
17	Garland ISD	594	569	415	4,119
18	Midlothian ISD	603	546	1,607	19,524
19	Coppell ISD	467	505	427	490
20	Waxahachie ISD	481	463	889	9,522

*Based on additional Templeton Demographics housing research

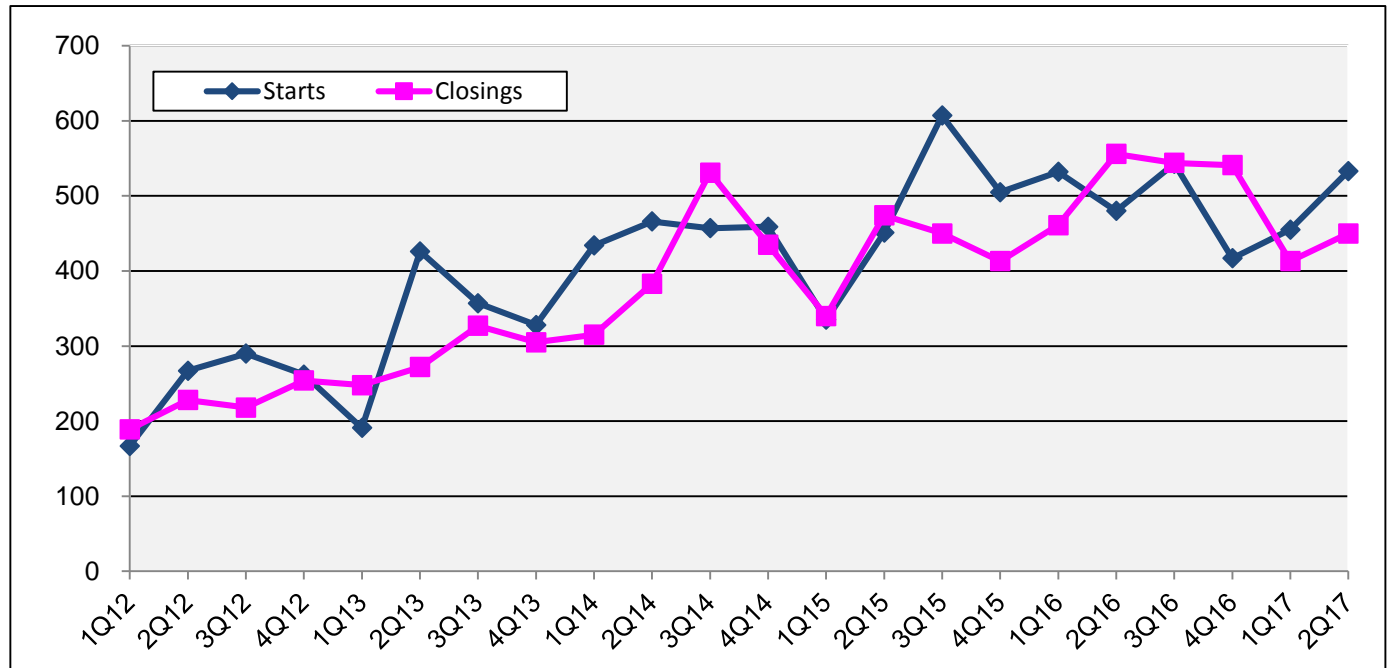
**Does NOT include age-restricted communities Robson Ranch and Fireside Addition





New Housing Activity

Denton ISD



Starts	2012	2013	2014	2015	2016	2017
1Q	167	191	434	335	532	455
2Q	267	426	466	451	480	533
3Q	290	357	457	607	543	
4Q	262	328	459	505	417	
Total	986	1,302	1,816	1,898	1,972	988

Closings	2012	2013	2014	2015	2016	2017
1Q	189	248	315	340	461	413
2Q	228	272	383	474	556	450
3Q	218	327	531	450	544	
4Q	254	305	435	413	541	
Total	889	1,152	1,664	1,677	2,102	863

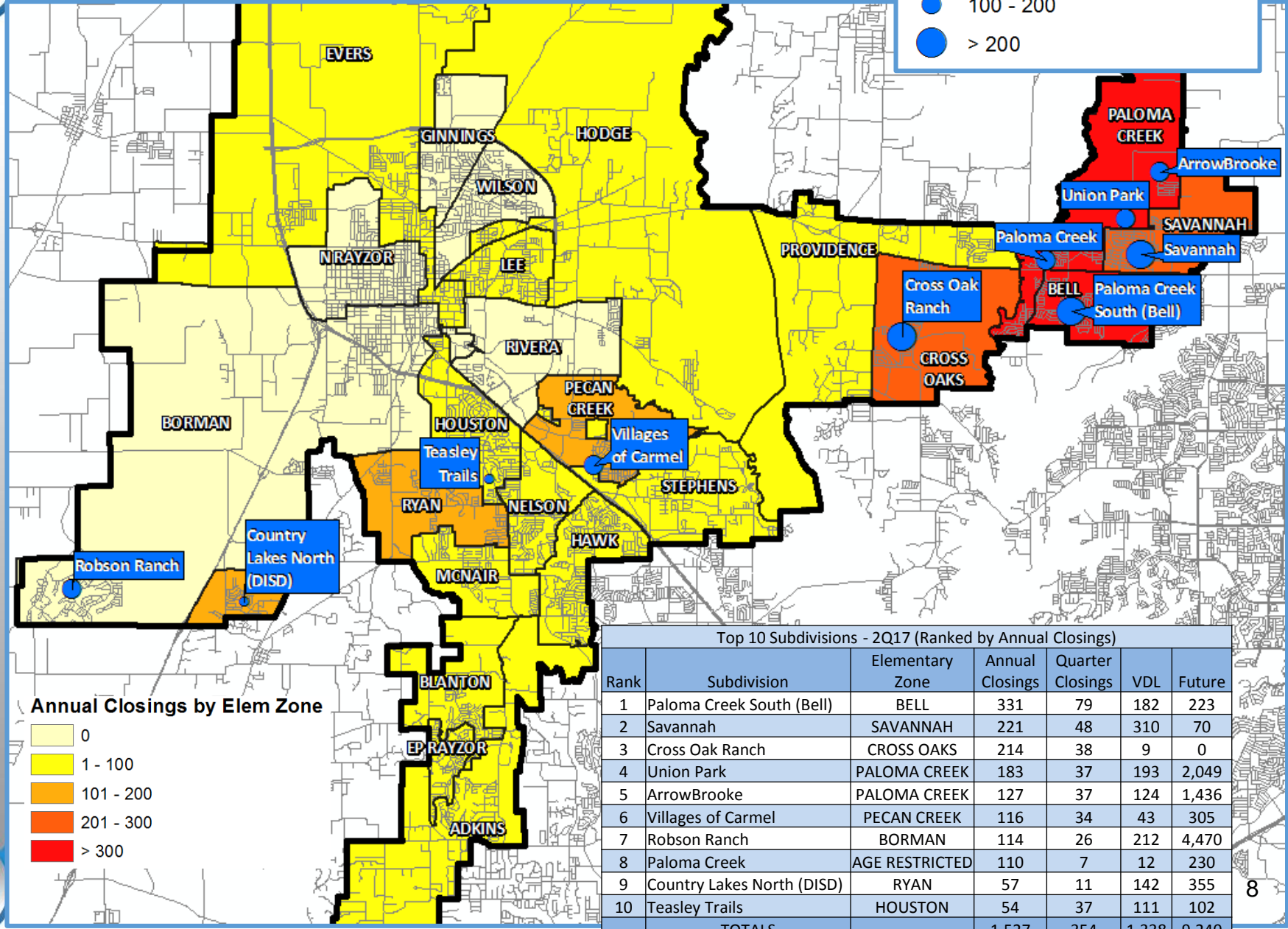
- Denton ISD had 533 new home starts in 2Q17, the most 2Q starts in more than 10 years
- DISD new home inventory is at 6 month's supply, with 648 homes under construction



Annual Closing Distribution 2Q17

Subdivision Annual Closings

- < 100
- 100 - 200
- > 200



Annual Closings by Elem Zone

- 0
- 1 - 100
- 101 - 200
- 201 - 300
- > 300

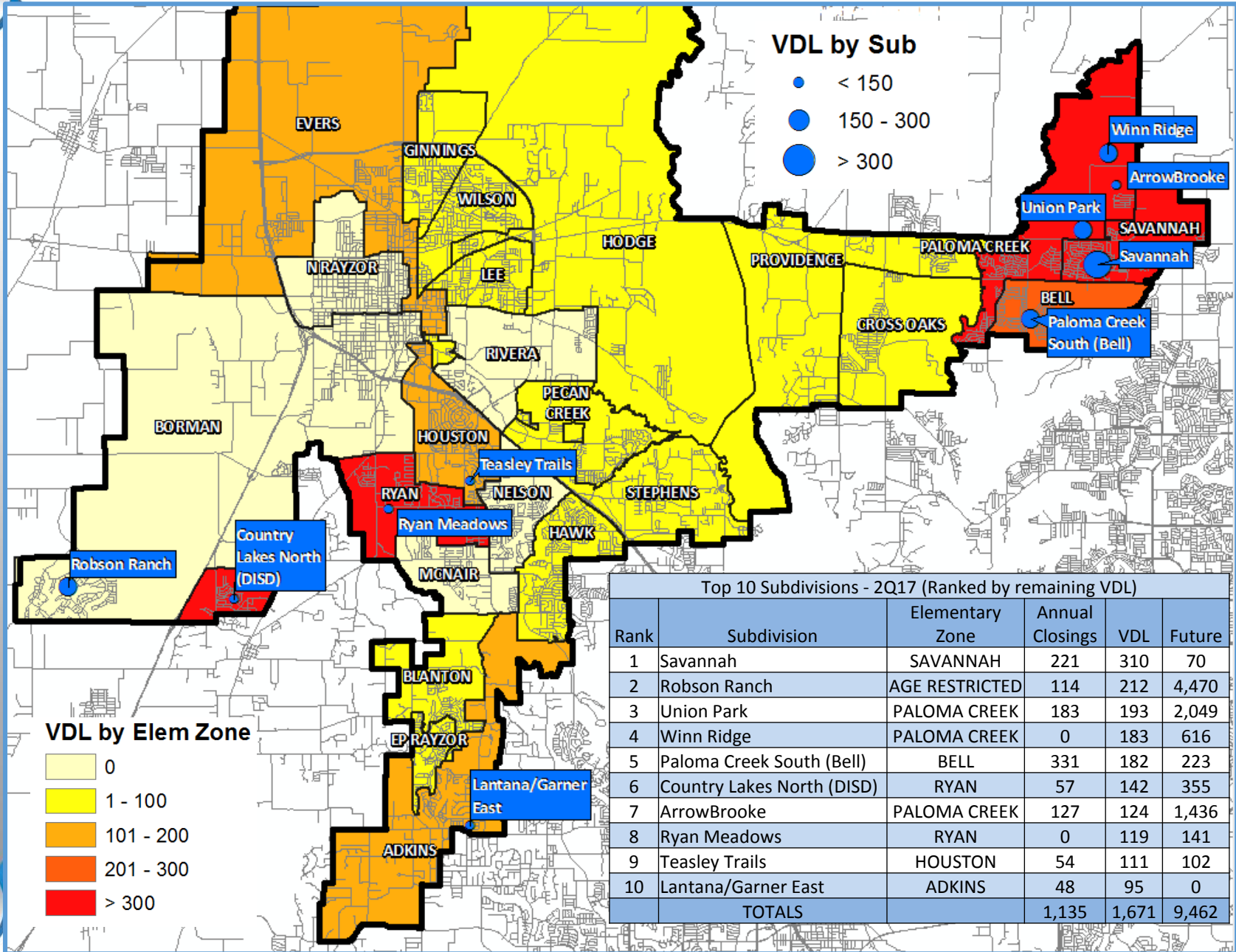
Top 10 Subdivisions - 2Q17 (Ranked by Annual Closings)

Rank	Subdivision	Elementary Zone	Annual Closings	Quarter Closings	VDL	Future
1	Paloma Creek South (Bell)	BELL	331	79	182	223
2	Savannah	SAVANNAH	221	48	310	70
3	Cross Oak Ranch	CROSS OAKS	214	38	9	0
4	Union Park	PALOMA CREEK	183	37	193	2,049
5	ArrowBrooke	PALOMA CREEK	127	37	124	1,436
6	Villages of Carmel	PECAN CREEK	116	34	43	305
7	Robson Ranch	BORMAN	114	26	212	4,470
8	Paloma Creek	AGE RESTRICTED	110	7	12	230
9	Country Lakes North (DISD)	RYAN	57	11	142	355
10	Teasley Trails	HOUSTON	54	37	111	102
TOTALS			1,527	354	1,338	9,240



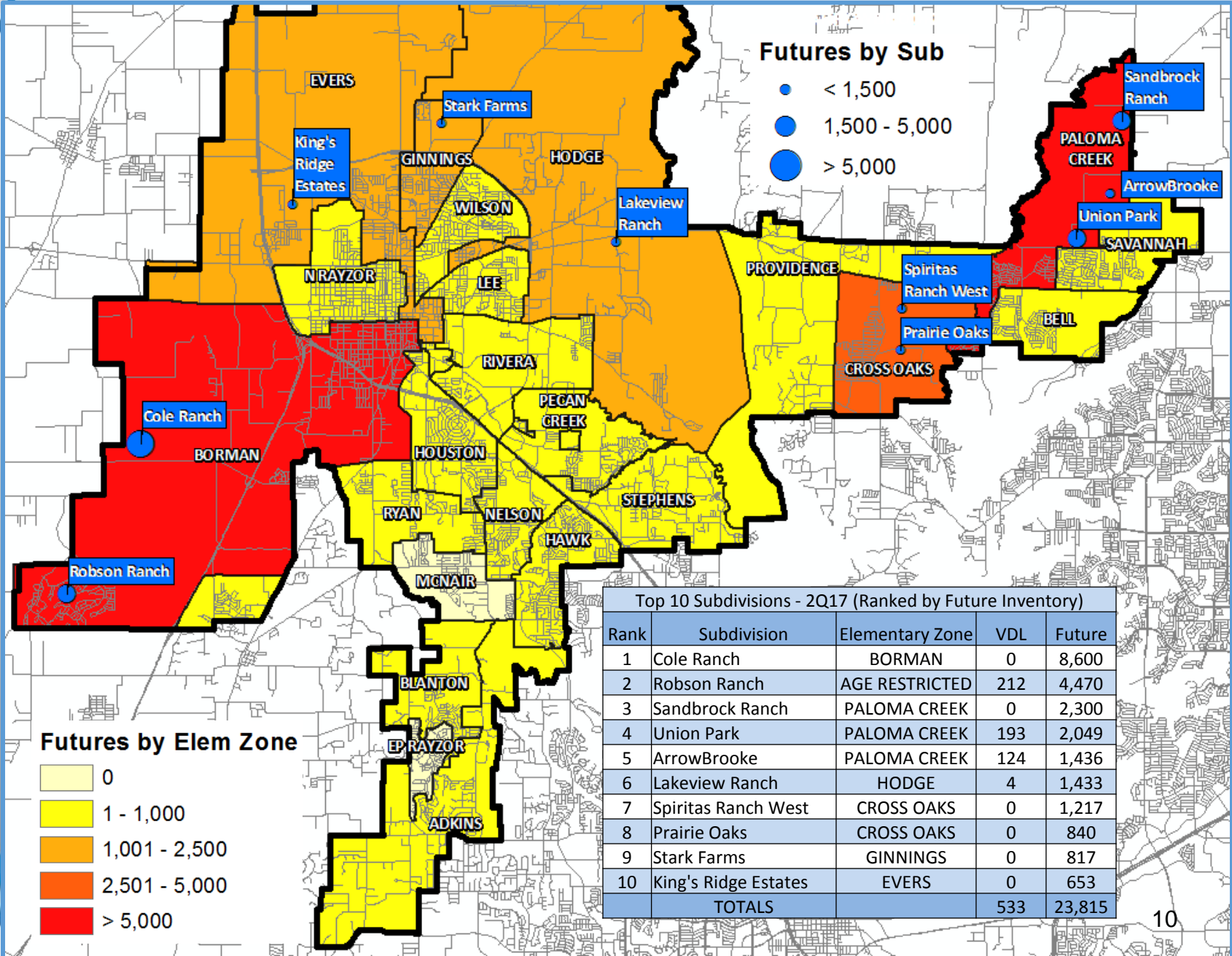


VDL Distribution





Futures Distribution



Futures by Sub

- < 1,500
- 1,500 - 5,000
- > 5,000

Futures by Elem Zone

- 0
- 1 - 1,000
- 1,001 - 2,500
- 2,501 - 5,000
- > 5,000

Top 10 Subdivisions - 2Q17 (Ranked by Future Inventory)

Rank	Subdivision	Elementary Zone	VDL	Future
1	Cole Ranch	BORMAN	0	8,600
2	Robson Ranch	AGE RESTRICTED	212	4,470
3	Sandbrock Ranch	PALOMA CREEK	0	2,300
4	Union Park	PALOMA CREEK	193	2,049
5	ArrowBrooke	PALOMA CREEK	124	1,436
6	Lakeview Ranch	HODGE	4	1,433
7	Spiritas Ranch West	CROSS OAKS	0	1,217
8	Prairie Oaks	CROSS OAKS	0	840
9	Stark Farms	GINNINGS	0	817
10	King's Ridge Estates	EVERS	0	653
TOTALS			533	23,815








New Home Activity by Elementary Zone

Elementary	Annual Starts	Quarter Starts	Annual Closings	Quarter Closings	Under Construction	Inventory	Vacant Dev. Lots	Future
ADKINS	98	23	79	21	34	57	197	109
BELL	352	105	357	89	109	161	209	985
BLANTON	67	32	46	4	48	56	88	231
BORMAN	0	0	0	0	0	0	0	8,946
CROSS OAKS	133	27	214	38	32	43	9	2,748
EP RAYZOR	6	0	12	2	1	2	17	0
EVERS	41	6	21	5	20	24	117	1,594
GINNINGS	0	0	0	0	0	0	36	1,330
HAWK	8	0	17	3	1	5	30	155
HODGE	1	0	3	2	0	0	4	2,058
HOUSTON	104	12	58	37	31	52	111	102
LEE	15	0	25	0	0	0	6	367
MCNAIR	0	0	16	0	0	0	0	0
N RAYZOR	0	0	0	0	0	0	0	150
NELSON	2	0	8	0	0	2	0	8
PALOMA CREEK	362	80	420	81	91	178	512	6,631
PECAN CREEK	156	41	142	37	50	72	73	305
PROVIDENCE	9	1	22	4	6	6	93	614
RIVERA	0	0	0	0	0	0	0	243
RYAN	206	96	147	33	99	124	355	750
SAVANNAH	228	51	252	53	72	120	355	526
STEPHENS	19	7	27	8	10	11	37	393
WILSON	6	0	0	0	5	6	34	400
Grand Totals*	1,813	481	1,866	417	609	919	2,283	28,645

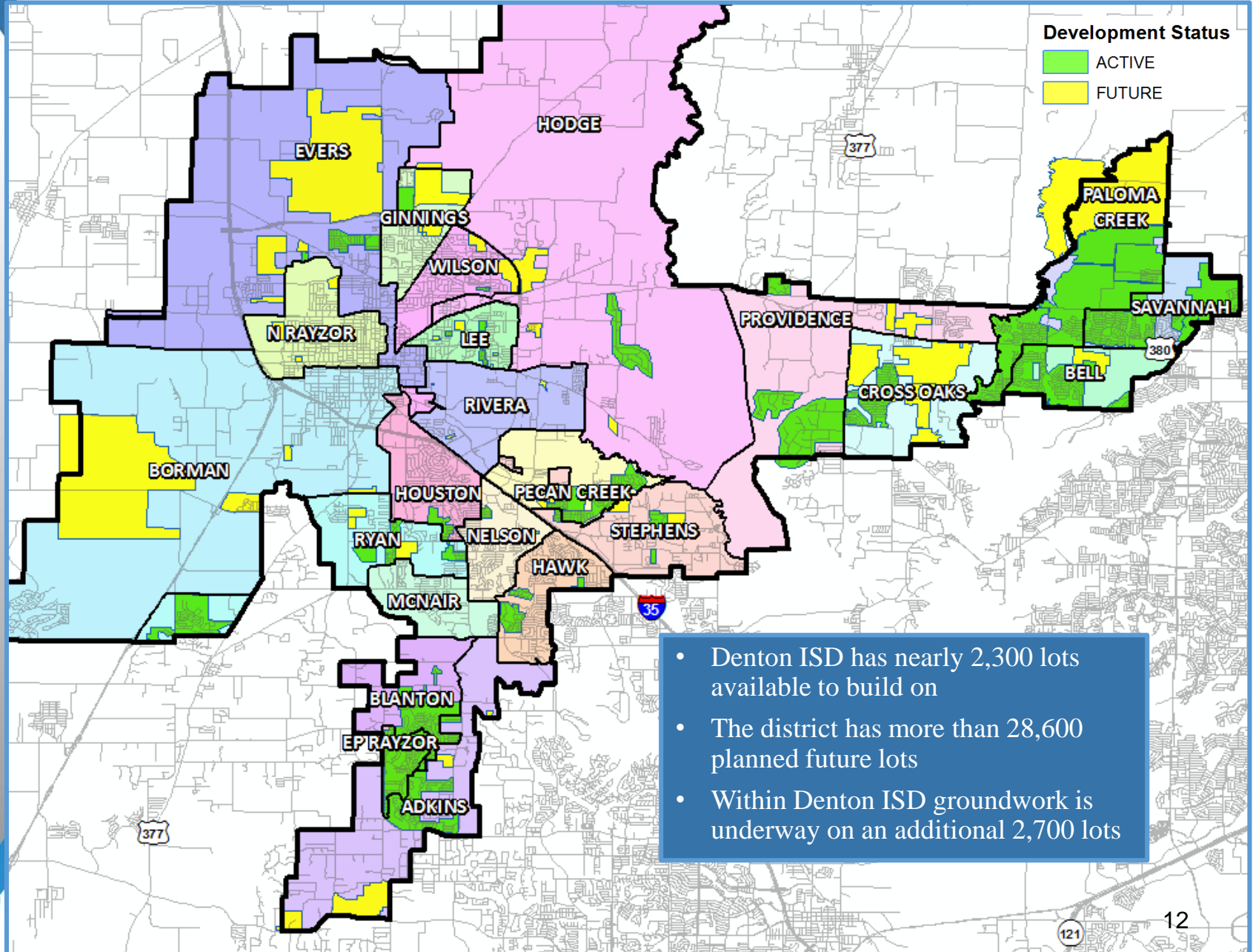
*Table does NOT include age restricted communities

	Highest activity in the category
	Second highest activity in the category
	Third highest activity in the category





District Overview





Residential Activity- 380 Corridor Growth

Oak Hill Ranch

- 391 total future lots
- Revised concept plan shows total lots upped from 147
- Initial groundwork stalled due to change in concept plans
- Anticipate homebuilding starting summer 2018, first residents late 2018
- \$325K - \$500K
- Cross Oaks Elementary



Prairie Oaks

- 840 total future lots
- Final plats for 1A-1B approved with 272 lots
- Homebuilding starting summer 2018
- Building ~100 homes a year starting 2019
- Cross Oaks Elementary



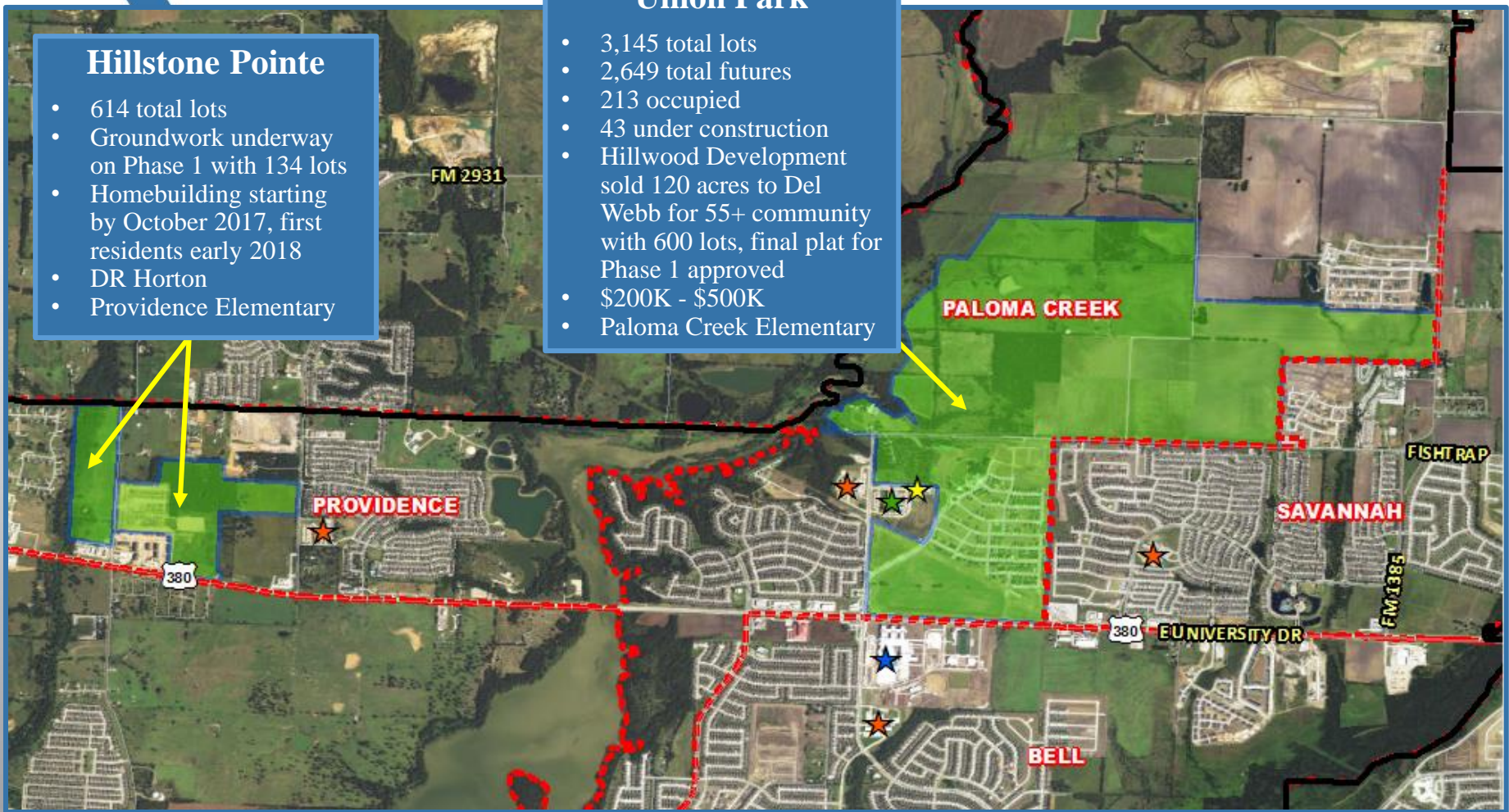
Residential Activity- 380 Corridor Growth

Hillstone Pointe

- 614 total lots
- Groundwork underway on Phase 1 with 134 lots
- Homebuilding starting by October 2017, first residents early 2018
- DR Horton
- Providence Elementary

Union Park

- 3,145 total lots
- 2,649 total futures
- 213 occupied
- 43 under construction
- Hillwood Development sold 120 acres to Del Webb for 55+ community with 600 lots, final plat for Phase 1 approved
- \$200K - \$500K
- Paloma Creek Elementary





Residential Activity- 380 Corridor Growth

Paloma Creek

- Paloma Creek Elementary:
 - 1,930 total lots
 - 230 future lots
 - 1,667 occupied
 - 10 U/C
- Bell Elementary:
 - 2,880 total lots
 - 223 future lots
 - 2,335 occupied
 - 100 U/C
 - Started 100 homes in 2Q17
 - Closed 79 homes in 2Q17



Windsong Ranch

- 2,400 total lots split between Prosper ISD and Denton ISD
- 434 total lots within Denton ISD
- 384 future lots
- 38 occupied
- 6 under construction
- \$400K - \$1M+
- Savannah Elementary





Residential Activity- 380 Corridor Growth

Winn Ridge

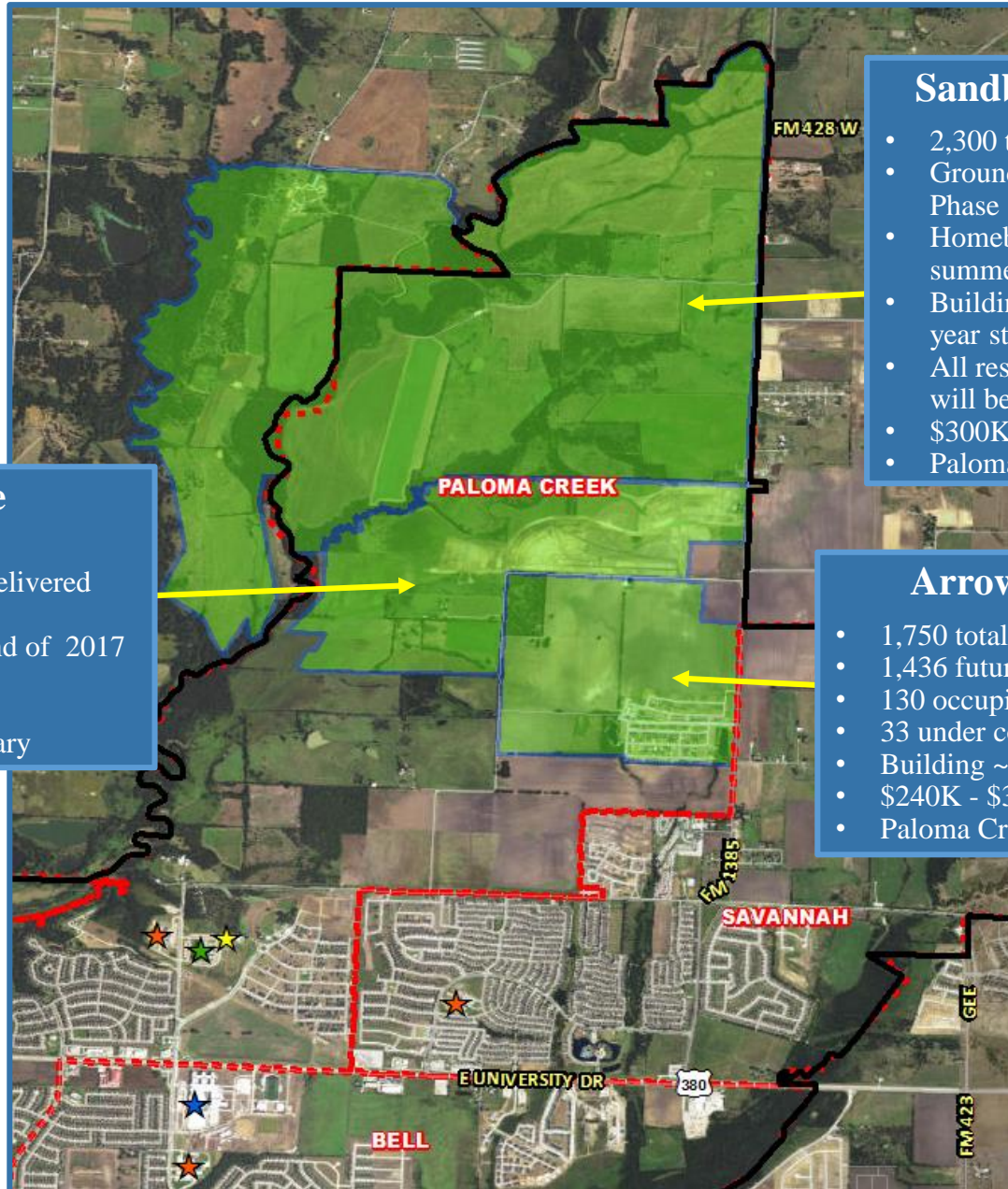
- 1,300 total lots
- Phase 1 with 221 lots delivered and homebuilding
- First residents by the end of 2017
- KB Homes and Centex
- \$195K - \$300K
- Paloma Creek Elementary

Sandbrock Ranch

- 2,300 total future lots
- Groundwork underway on Phase 1 with 220 lots
- Homebuilding starting summer 2018
- Building 150+ homes a year starting 2019
- All residential activity will be within DISD
- \$300K+
- Paloma Creek Elementary

ArrowBrooke

- 1,750 total lots
- 1,436 futures
- 130 occupied
- 33 under construction
- Building ~120 homes a year
- \$240K - \$360K
- Paloma Creek Elementary





Residential Activity

Beaver Creek

- 337 total lots
- Phase 1 delivered with 39 lots, homebuilding started
- Phase 1B with 95 lots delivering fall 2017
- \$225K - \$270K
- Ginnings Elementary

Harvest Hill

- 150 total future lots
- Groundwork starting by September 2017, final plat approved April 2017
- Phase 1 delivering summer 2018
- Anticipate building 50-60 homes a year
- Wilson Elementary

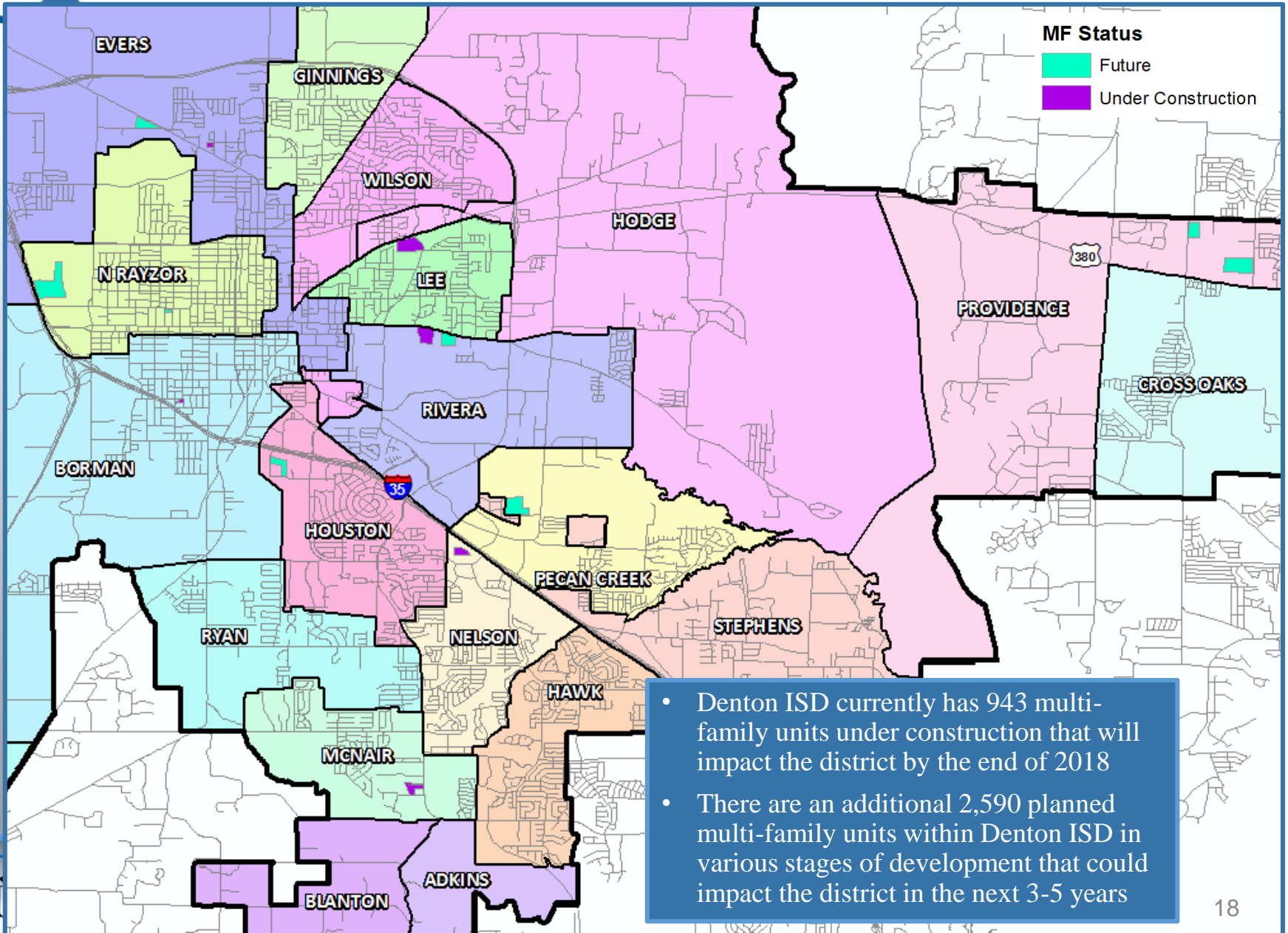


Hercules West Addition
 58 future attached SF homes
 Preliminary plat approved





Multi-Family Development Activity



- Denton ISD currently has 943 multi-family units under construction that will impact the district by the end of 2018
- There are an additional 2,590 planned multi-family units within Denton ISD in various stages of development that could impact the district in the next 3-5 years

Ten Year Forecast

By Grade Level

Year (Oct.)	EE/PRE-K	K	1st	2nd	3rd	4th	5th	6th	7th	8th	9th	10th	11th	12th	Total	Total Growth	Percent
2012/13	1,001	2,121	2,162	2,052	2,065	2,108	2,059	1,929	1,887	1,768	1,819	1,769	1,610	1,425	25,775		
2013/14	967	2,074	2,164	2,163	2,069	2,104	2,085	2,041	1,919	1,904	1,925	1,708	1,640	1,549	26,312	537	2.1%
2014/15	1,063	2,068	2,099	2,178	2,166	2,082	2,133	2,075	2,052	1,973	2,042	1,873	1,665	1,551	27,020	708	2.7%
2015/16	1,143	1,954	2,143	2,088	2,190	2,152	2,115	2,154	2,128	2,094	2,091	1,985	1,756	1,566	27,559	539	2.0%
2016/17	1,108	2,051	2,042	2,199	2,175	2,237	2,207	2,159	2,207	2,185	2,280	2,115	2,002	1,695	28,662	1,103	4.0%
2017/18	1,108	2,114	2,133	2,110	2,296	2,263	2,329	2,236	2,212	2,257	2,351	2,217	2,043	1,915	29,584	922	3.2%
2018/19	1,108	2,196	2,203	2,216	2,197	2,410	2,350	2,346	2,266	2,295	2,418	2,277	2,143	1,941	30,366	782	2.6%
2019/20	1,108	2,268	2,268	2,296	2,302	2,284	2,519	2,379	2,359	2,326	2,486	2,341	2,195	2,048	31,179	813	2.7%
2020/21	1,108	2,349	2,354	2,388	2,391	2,414	2,395	2,557	2,413	2,412	2,517	2,424	2,260	2,089	32,071	892	2.9%
2021/22	1,108	2,398	2,441	2,464	2,502	2,498	2,508	2,439	2,604	2,465	2,587	2,450	2,341	2,153	32,958	887	2.8%
2022/23	1,108	2,437	2,499	2,551	2,573	2,613	2,613	2,555	2,467	2,667	2,662	2,518	2,364	2,231	33,858	900	2.7%
2023/24	1,108	2,515	2,529	2,610	2,656	2,693	2,729	2,649	2,611	2,505	2,851	2,590	2,430	2,253	34,729	871	2.6%
2024/25	1,108	2,564	2,615	2,635	2,732	2,777	2,809	2,768	2,704	2,668	2,707	2,776	2,499	2,316	35,678	949	2.7%
2025/26	1,108	2,608	2,660	2,727	2,754	2,856	2,905	2,846	2,816	2,764	2,895	2,633	2,676	2,379	36,627	949	2.7%
2026/27	1,108	2,644	2,694	2,769	2,850	2,880	2,988	2,946	2,895	2,882	2,975	2,817	2,541	2,546	37,535	908	2.5%

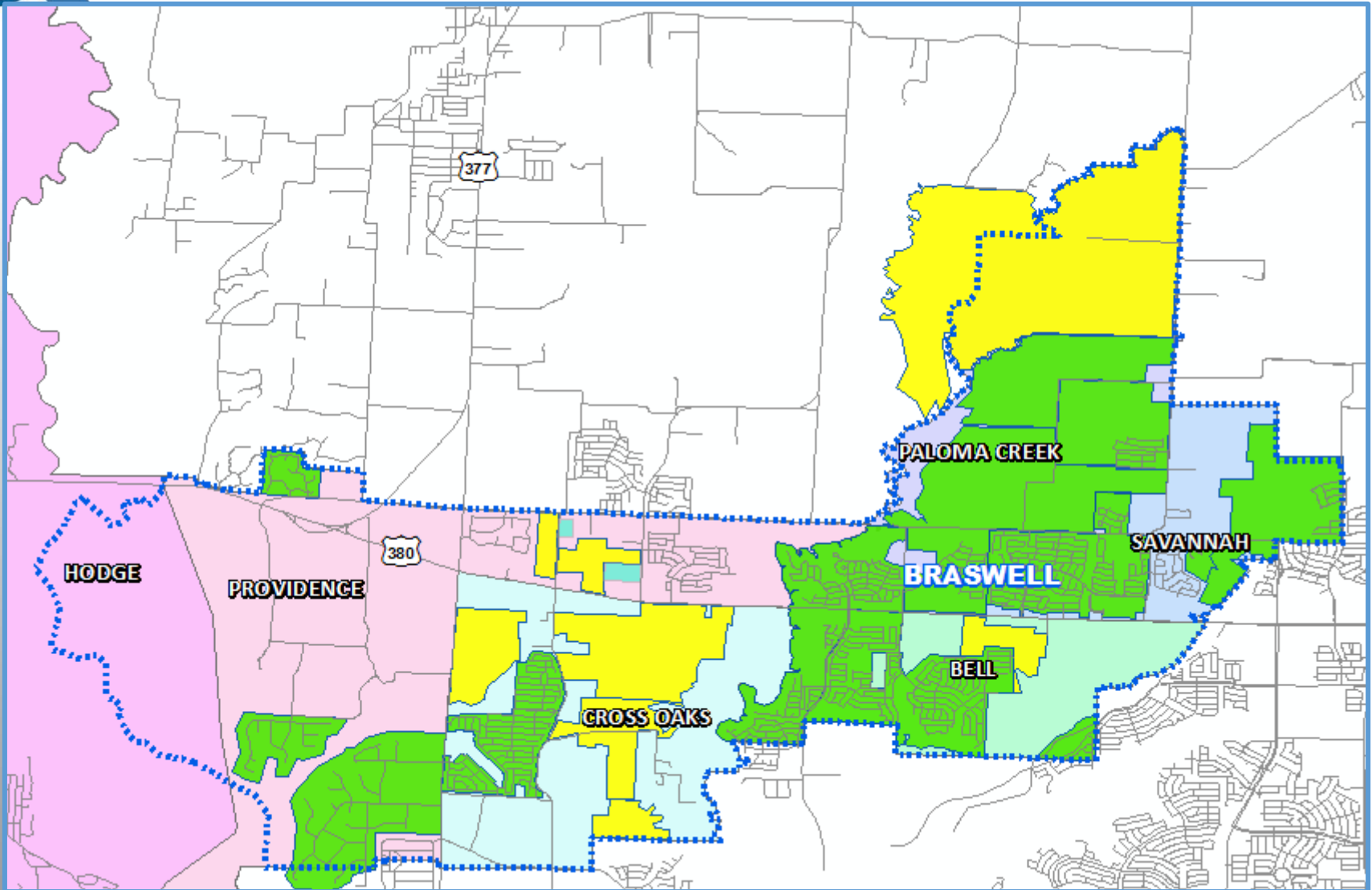
*Yellow box = largest grade per year

*Green box = second largest grade per year

- Denton ISD will enroll more than 30,000 students by 2018
- 5 year growth = 4,296 students
- 2021/22 enrollment = 32,958 students
- 10 year growth = 8,873 students
- 2026/27 enrollment = 37,535 students



Braswell High School Zone



Vertical Zones- Ten Year Forecast

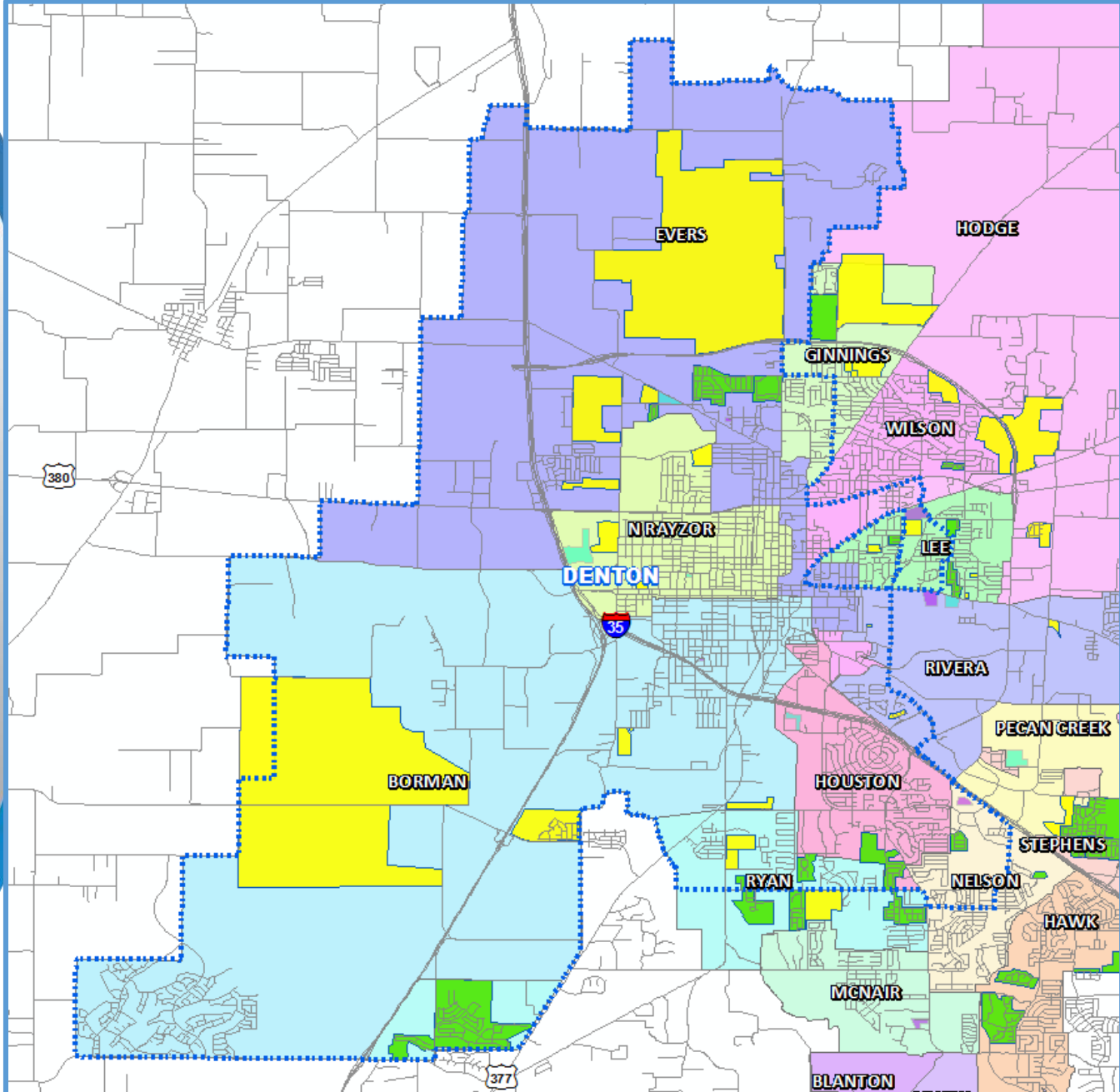
Braswell High School

Campus Name	Capacity	HISTORY		ENROLLMENT PROJECTIONS									
		2015/16	2016/17	2017/18	2018/19	2019/20	2020/21	2021/22	2022/23	2023/24	2024/25	2025/26	2026/27
Bell Elementary School	740	0	653	737	796	843	864	906	910	908	900	901	895
Cross Oaks Elementary School	740	646	740	785	788	794	803	809	824	848	860	879	898
Paloma Creek Elementary School	740	655	486	591	717	850	1,001	1,153	1,280	1,303	1,336	1,351	1,354
Providence Elementary School	740	699	406	406	422	437	441	467	484	514	545	553	559
Savannah Elementary School	740	651	712	722	712	735	707	685	682	692	693	693	697
ELEMENTARY TOTALS	3,700	2,651	2,997	3,241	3,435	3,659	3,816	4,020	4,180	4,265	4,334	4,377	4,403
Elementary Absolute Change		89	346	244	194	224	157	204	160	85	69	43	26
Elementary Percent Change		3.47%	13.05%	8.14%	5.99%	6.52%	4.29%	5.35%	3.98%	2.03%	1.62%	0.99%	0.59%
Rodriguez Middle School	1,323	0	0	654	696	713	786	842	936	988	1,056	1,133	1,252
Navo Middle School	1,181	1,211	1,381	909	1,031	1,091	1,267	1,312	1,381	1,384	1,480	1,516	1,494
MIDDLE SCHOOL TOTALS	2,504	1,211	1,381	1,563	1,727	1,804	2,053	2,154	2,317	2,372	2,536	2,649	2,746
Middle School Absolute Change		134	170	182	164	77	249	101	163	55	164	113	97
Middle School Percent Change		12.44%	14.04%	13.18%	10.49%	4.46%	13.80%	4.92%	7.57%	2.37%	6.91%	4.46%	3.66%
Braswell High School		0	1,232	1,680	1,895	2,137	2,240	2,485	2,640	2,881	3,062	3,240	3,434
HIGH SCHOOL TOTALS		0	1,232	1,680	1,895	2,137	2,240	2,485	2,640	2,881	3,062	3,240	3,434
High School Absolute Change		0	1,232	448	215	242	103	245	155	241	181	178	194
High School Percent Change				36.36%	12.80%	12.77%	4.82%	10.94%	6.24%	9.13%	6.28%	5.81%	5.99%
Braswell High School Zone Totals	6,204	3,862	5,610	6,484	7,057	7,600	8,109	8,659	9,137	9,518	9,932	10,266	10,583
Zone Absolute Change		223	1,748	874	573	543	509	550	478	381	414	334	317
Zone Percent Change		6.13%	45.26%	15.58%	8.84%	7.69%	6.70%	6.78%	5.52%	4.17%	4.35%	3.36%	3.09%





Denton High School Zone



Vertical Zones- Ten Year Forecast

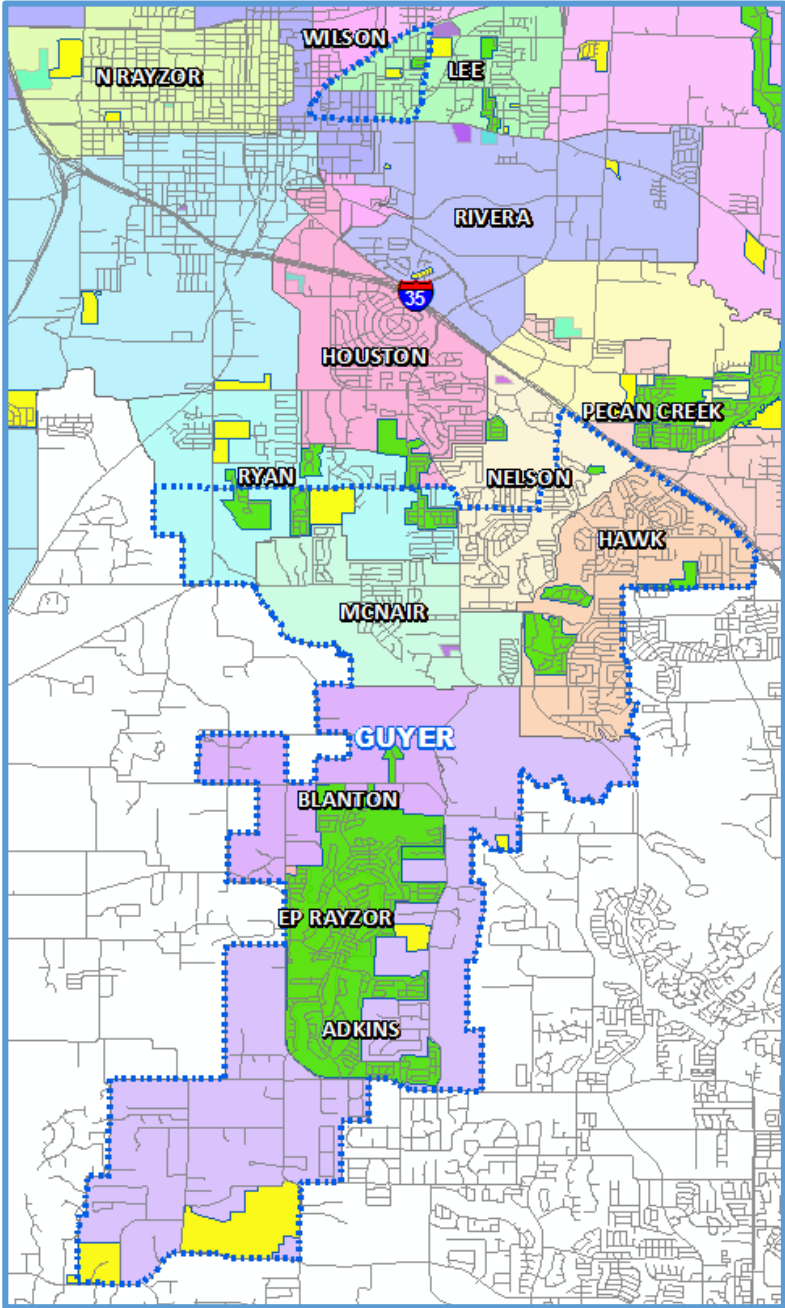
Denton High School

Campus Name	Capacity	HISTORY	Current	ENROLLMENT PROJECTIONS									
		2015/16	2016/17	2017/18	2018/19	2019/20	2020/21	2021/22	2022/23	2023/24	2024/25	2025/26	2026/27
Borman Elementary School	740	445	465	485	527	601	709	810	915	1,030	1,143	1,264	1,382
Evers Park Elementary School	740	566	577	599	631	646	653	700	749	801	854	921	998
Sam Houston Elementary School	740	575	590	623	636	635	653	653	655	677	687	699	702
Lee Elementary School	740	604	600	617	626	632	638	652	651	647	647	648	645
Newton Rayzor Elementary School	740	675	648	638	633	627	623	616	611	614	612	612	614
Ryan Elementary School	740	598	624	661	707	720	747	789	836	885	942	975	1,001
ELEMENTARY TOTALS	4,440	3,463	3,504	3,623	3,760	3,861	4,023	4,220	4,417	4,654	4,885	5,119	5,342
Elementary Absolute Change		16	41	119	137	101	162	197	197	237	231	234	223
Elementary Percent Change		0.46%	1.18%	3.40%	3.78%	2.69%	4.20%	4.90%	4.67%	5.37%	4.96%	4.79%	4.36%
Calhoun Middle School	1,268	672	711	715	717	729	747	765	786	791	832	860	890
McMath Middle School	1,181	748	750	809	811	851	892	954	1,004	1,087	1,159	1,231	1,325
MIDDLE SCHOOL TOTALS	2,449	1,420	1,461	1,524	1,528	1,580	1,639	1,719	1,790	1,878	1,991	2,091	2,215
Middle School Absolute Change		-5	41	63	4	52	59	80	71	88	113	100	124
Middle School Percent Change		-0.35%	2.89%	4.31%	0.26%	3.40%	3.73%	4.88%	4.13%	4.92%	6.02%	5.02%	5.93%
Denton High School	2,460	2,324	2,070	2,060	2,094	2,128	2,213	2,212	2,289	2,359	2,431	2,550	2,640
HIGH SCHOOL TOTALS		2,324	2,070	2,060	2,094	2,128	2,213	2,212	2,289	2,359	2,431	2,550	2,640
High School Absolute Change		158	-254	-10	34	34	85	-1	77	70	72	119	90
High School Percent Change		7.29%	-10.93%	-0.48%	1.65%	1.62%	3.99%	-0.05%	3.48%	3.06%	3.05%	4.90%	3.53%
Denton High School Zone Totals	9,349	7,207	7,035	7,207	7,382	7,569	7,875	8,151	8,496	8,891	9,307	9,760	10,197
Zone Absolute Change		169	-172	172	175	187	306	276	345	395	416	453	437
Zone Percent Change		2.40%	-2.39%	2.44%	2.43%	2.53%	4.04%	3.50%	4.23%	4.65%	4.68%	4.87%	4.48%





Guyer High School Zone



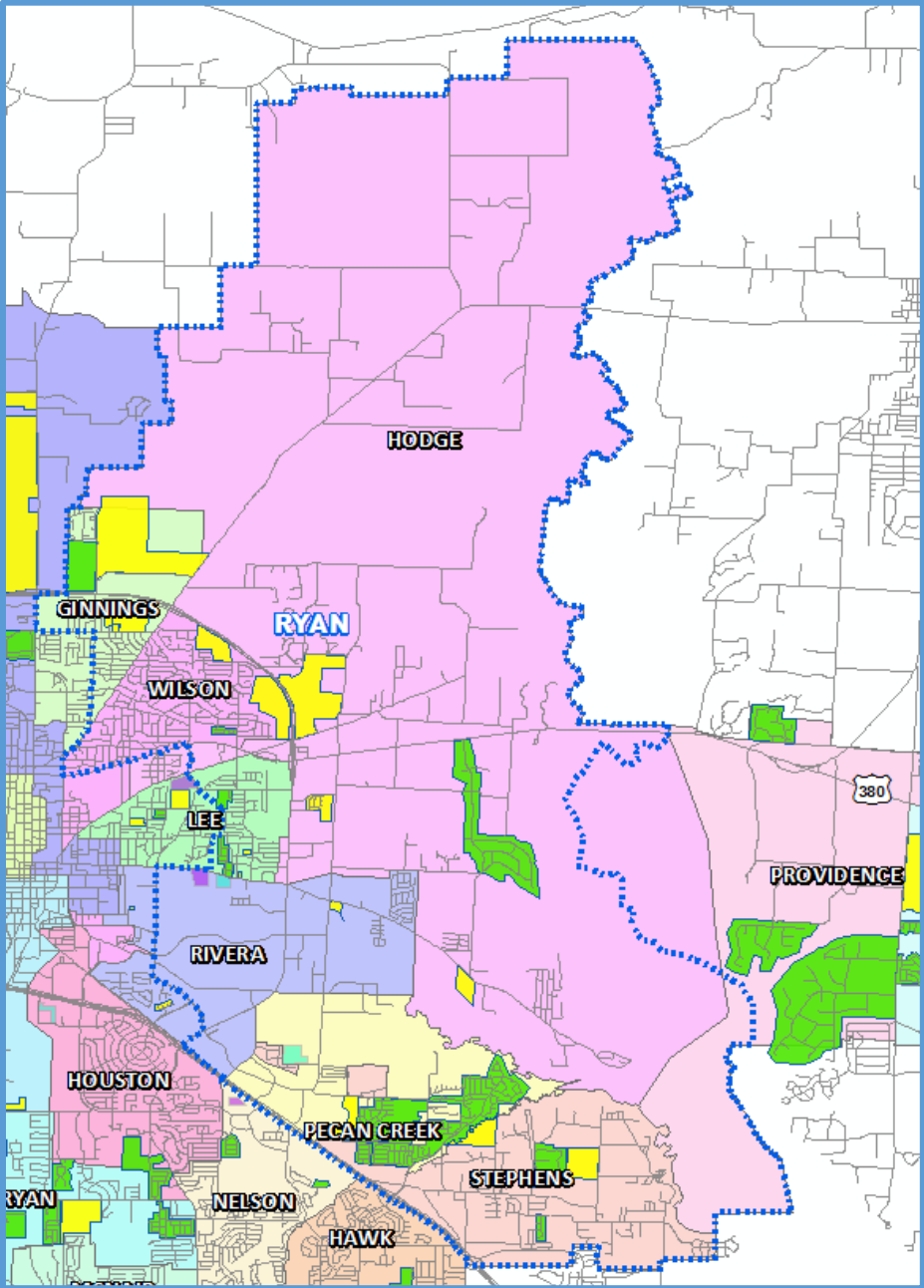
Vertical Zones- Ten Year Forecast

Guyer High School

Campus Name	Capacity	HISTORY	Current	ENROLLMENT PROJECTIONS									
		2015/16	2016/17	2017/18	2018/19	2019/20	2020/21	2021/22	2022/23	2023/24	2024/25	2025/26	2026/27
Adkins Elementary School	740	353	377	397	410	431	453	477	503	526	549	571	593
Blanton Elementary School	740	511	486	482	462	424	419	409	415	421	431	436	437
E P Rayzor Elementary School	740	415	420	397	378	370	357	353	359	364	376	389	402
Hawk Elementary School	740	693	699	652	623	601	580	588	587	590	593	585	570
McNair Elementary School	740	582	583	570	563	560	567	575	583	590	599	607	611
Nelson Elementary School	740	616	630	636	628	634	638	645	621	617	610	601	595
ELEMENTARY TOTALS	4,440	3,170	3,195	3,134	3,064	3,020	3,014	3,047	3,068	3,108	3,158	3,189	3,208
Elementary Absolute Change		-136	25	-61	-70	-44	-6	33	21	40	50	31	19
Elementary Percent Change		-4.11%	0.79%	-1.91%	-2.23%	-1.44%	-0.20%	1.09%	0.69%	1.30%	1.61%	0.98%	0.60%
Crownover Middle School	1,181	955	946	925	929	931	917	868	841	820	833	842	859
Harpool Middle School	1,181	966	981	984	932	950	918	876	844	823	815	840	865
MIDDLE SCHOOL TOTALS	2,362	1,921	1,927	1,909	1,861	1,881	1,835	1,744	1,685	1,643	1,648	1,682	1,724
Middle School Absolute Change		69	6	-18	-48	20	-46	-91	-59	-42	5	34	42
Middle School Percent Change		3.73%	0.31%	-0.93%	-2.51%	1.07%	-2.45%	-4.96%	-3.38%	-2.49%	0.30%	2.06%	2.50%
John Guyer High School	2,140	2,458	2,563	2,631	2,695	2,715	2,755	2,751	2,704	2,668	2,602	2,577	2,555
HIGH SCHOOL TOTALS		2,458	2,563	2,631	2,695	2,715	2,755	2,751	2,704	2,668	2,602	2,577	2,555
High School Absolute Change		63	105	68	64	20	40	-4	-47	-36	-66	-25	-22
High School Percent Change		2.63%	4.27%	2.65%	2.43%	0.74%	1.47%	-0.15%	-1.71%	-1.33%	-2.47%	-0.96%	-0.85%
Guyer High School Zone Totals	8,942	7,549	7,685	7,674	7,620	7,616	7,604	7,542	7,457	7,419	7,408	7,448	7,487
Zone Absolute Change		-4	136	-11	-54	-4	-12	-62	-85	-38	-11	40	39
Zone Percent Change		-0.05%	1.80%	-0.14%	-0.70%	-0.05%	-0.16%	-0.82%	-1.13%	-0.51%	-0.15%	0.54%	0.52%



Ryan High School Zone



Vertical Zones- Ten Year Forecast

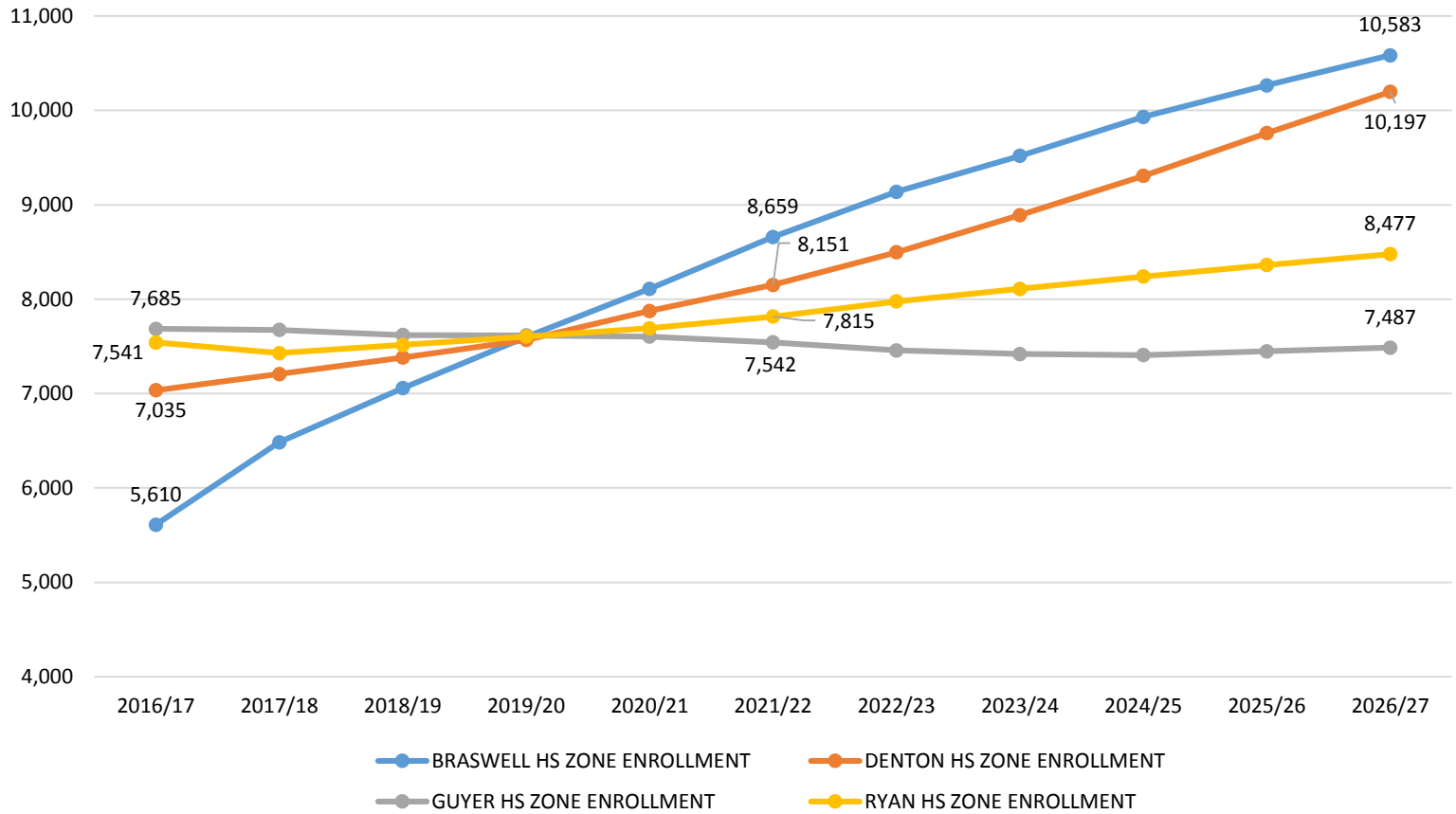
Ryan High School

Campus Name	Capacity	HISTORY	Current	ENROLLMENT PROJECTIONS									
		2015/16	2016/17	2017/18	2018/19	2019/20	2020/21	2021/22	2022/23	2023/24	2024/25	2025/26	2026/27
Ginnings Elementary School	740	609	593	587	603	619	643	661	687	711	739	766	791
Hodge Elementary School	740	650	659	654	651	664	666	689	696	706	719	736	754
Pecan Creek Elementary School	740	716	659	679	702	733	739	759	781	806	808	794	796
Rivera Elementary School	740	661	615	639	654	663	681	712	711	717	716	730	732
Olive Stephens Elementary School	740	519	503	511	513	534	531	521	541	552	554	575	575
Wilson Elementary School	740	609	589	580	593	587	581	585	608	616	622	627	627
ELEMENTARY TOTALS	4,440	3,764	3,618	3,650	3,716	3,800	3,841	3,927	4,024	4,108	4,158	4,228	4,275
Elementary Absolute Change		-12	-146	32	66	84	41	86	97	84	50	70	47
Elementary Percent Change		-0.32%	-3.88%	0.88%	1.81%	2.26%	1.08%	2.24%	2.47%	2.09%	1.22%	1.68%	1.11%
Bette Myers Middle School	1,323	904	899	834	887	885	921	923	945	925	973	995	1,019
Strickland Middle School	1,334	900	873	865	894	904	924	958	942	937	982	999	1,009
MIDDLE SCHOOL TOTALS	2,657	1,804	1,772	1,699	1,781	1,789	1,845	1,881	1,887	1,862	1,955	1,994	2,028
Middle School Absolute Change		77	-32	-73	82	8	56	36	6	-25	93	39	34
Middle School Percent Change		4.46%	-1.77%	-4.12%	4.83%	0.45%	3.13%	1.95%	0.32%	-1.32%	4.99%	1.99%	1.71%
Ryan High School	2,340	2,460	2,097	2,025	1,965	1,960	1,952	1,953	2,012	2,086	2,073	2,086	2,120
Fred Moore High School		57	54	54	54	54	54	54	54	54	54	54	54
HIGH SCHOOL TOTALS	2,340	2,517	2,151	2,079	2,019	2,014	2,006	2,007	2,066	2,140	2,127	2,140	2,174
High School Absolute Change		0	-366	-72	-60	-5	-8	1	59	74	-13	13	34
High School Percent Change		1.33%	-14.54%	-3.35%	-2.89%	-0.25%	-0.40%	0.05%	2.94%	3.58%	-0.61%	0.61%	1.59%
Ryan High School Zone Totals	9,437	8,085	7,541	7,428	7,516	7,603	7,692	7,815	7,977	8,110	8,240	8,362	8,477
Zone Absolute Change		98	-544	-113	88	87	89	123	162	133	130	122	115
Zone Percent Change		1.2%	-6.7%	-1.5%	1.2%	1.2%	1.2%	1.6%	2.1%	1.7%	1.6%	1.5%	1.4%

Enrollment Growth by HS Zone



Enrollment by HS Zone, 2016/17 - 2026/27





Summary

- Denton's unemployment rate is currently below 4%.
- Paloma Creek South started 100 new homes in 2Q17, and closed 79, making it the most active development in 2Q.
- The average home sale price within Denton is \$258,000, a rise of 8% over last year.
- Rodriguez Middle School is expected to open this fall with 650 students.
- Denton ISD can expect an increase of approximately 4,300 students during the next 5 years.
- 2021/22 enrollment projection: 32,958 students.
- DISD is projected to enroll more than 37,500 students for the 2026/27 school year.