



# **BOE**

# **2025/2026 Exit**

# **Interview Data**

Tuesday, June 9, 2026

**M**

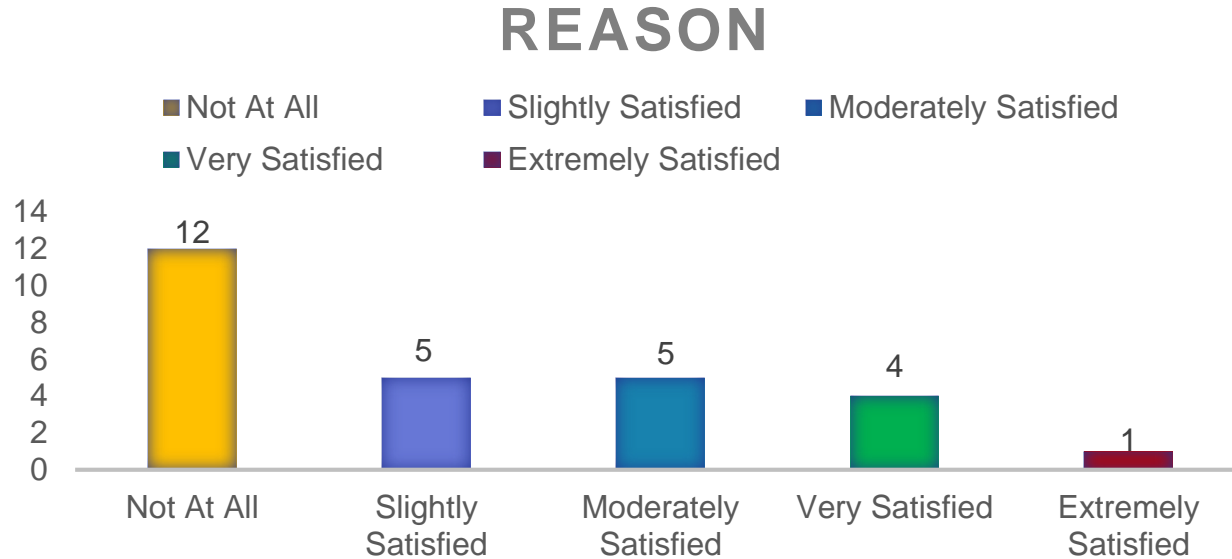
# 2025/2026 School Year Exit Survey

- 159 Surveys were sent to employees
- 39 responses
- 24.6% response rate – typical/low
- Response Rates national averages
- Interpretation Under 20% - Low
- 20–30% - Typical/Average
- 30–50% - Strong
- Above 50% - Excellent

# Q1: What was your main reason for leaving the company?

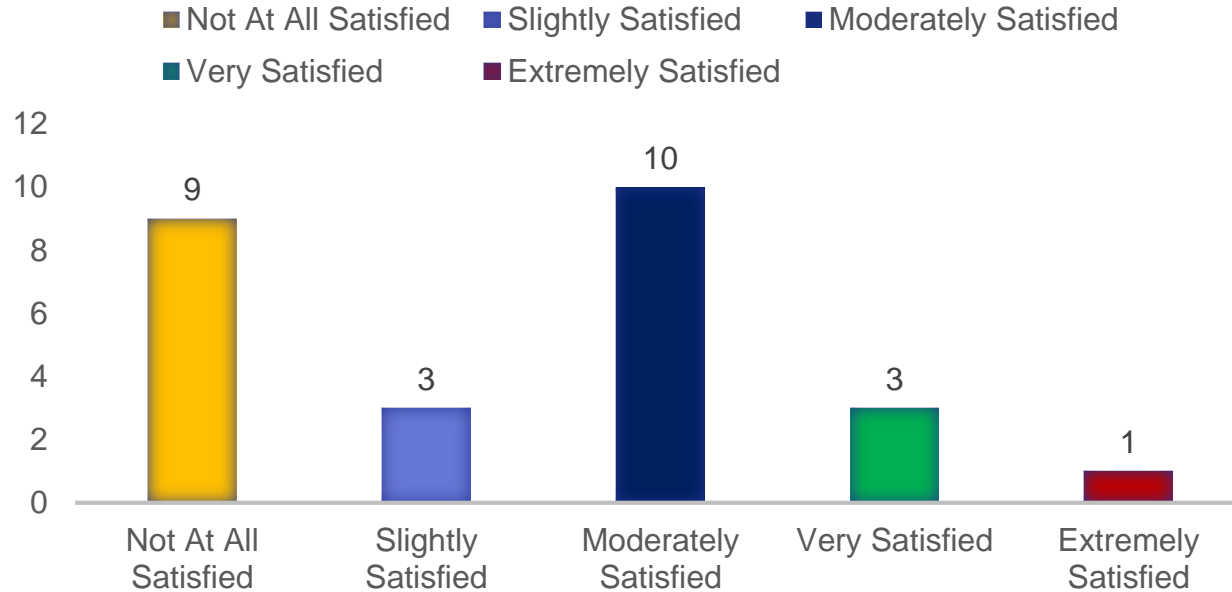


## Q2: Did you feel supported by your school leader?



# Q3: How satisfied were you with your professional development opportunities?

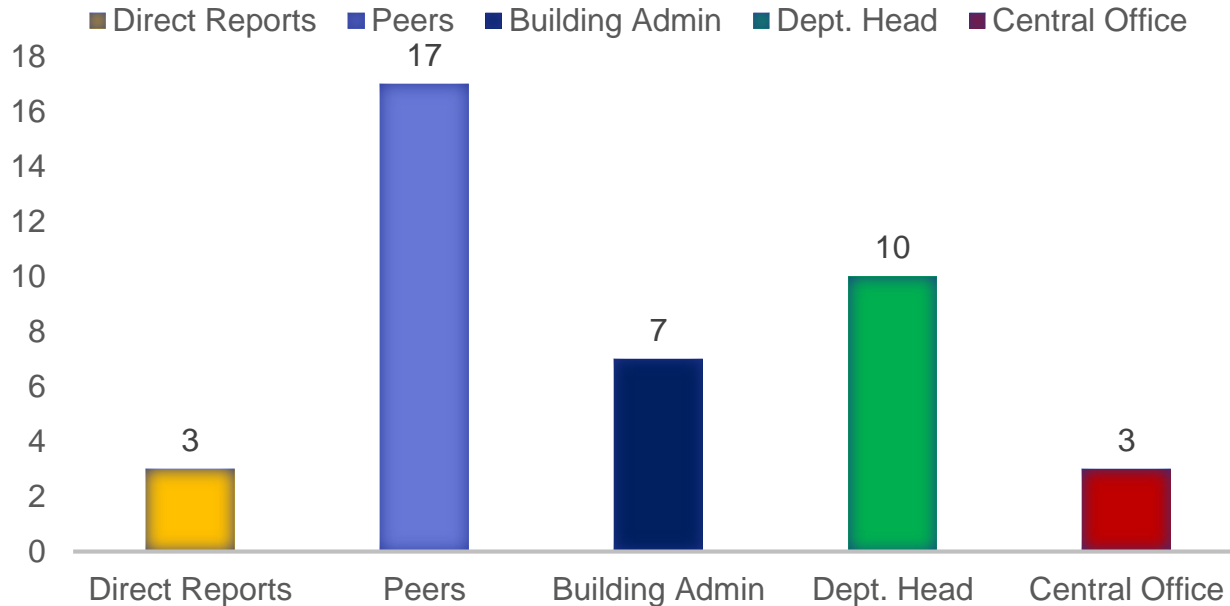
## REASON



## Q4: Did you feel heard and seen in your workplace? (check all that apply)

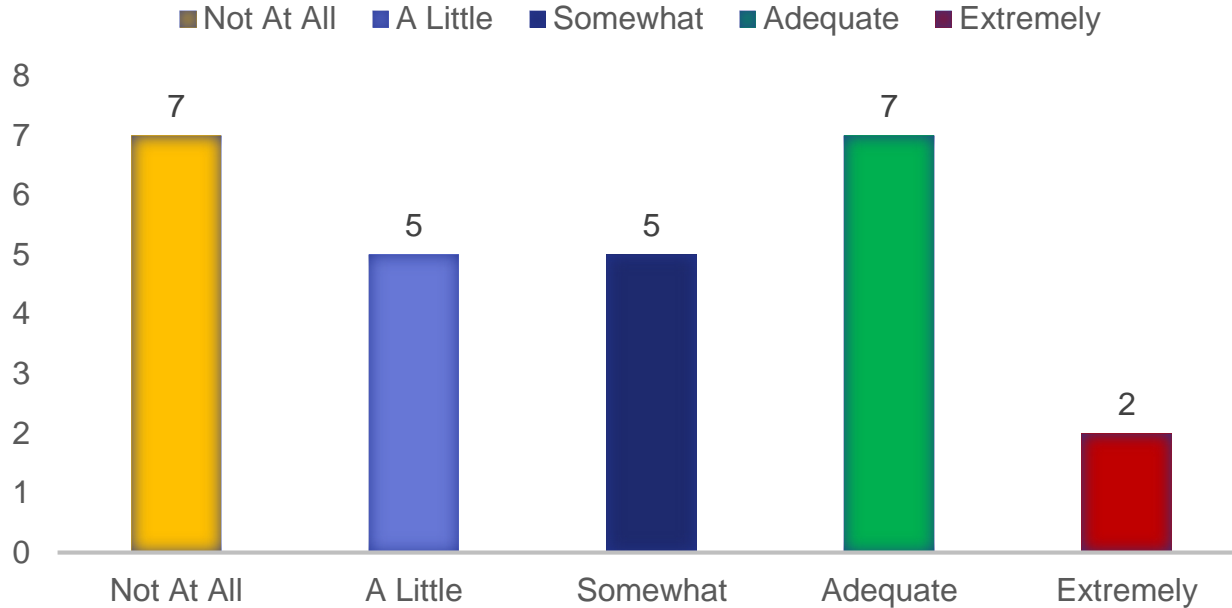
- 

### REASON

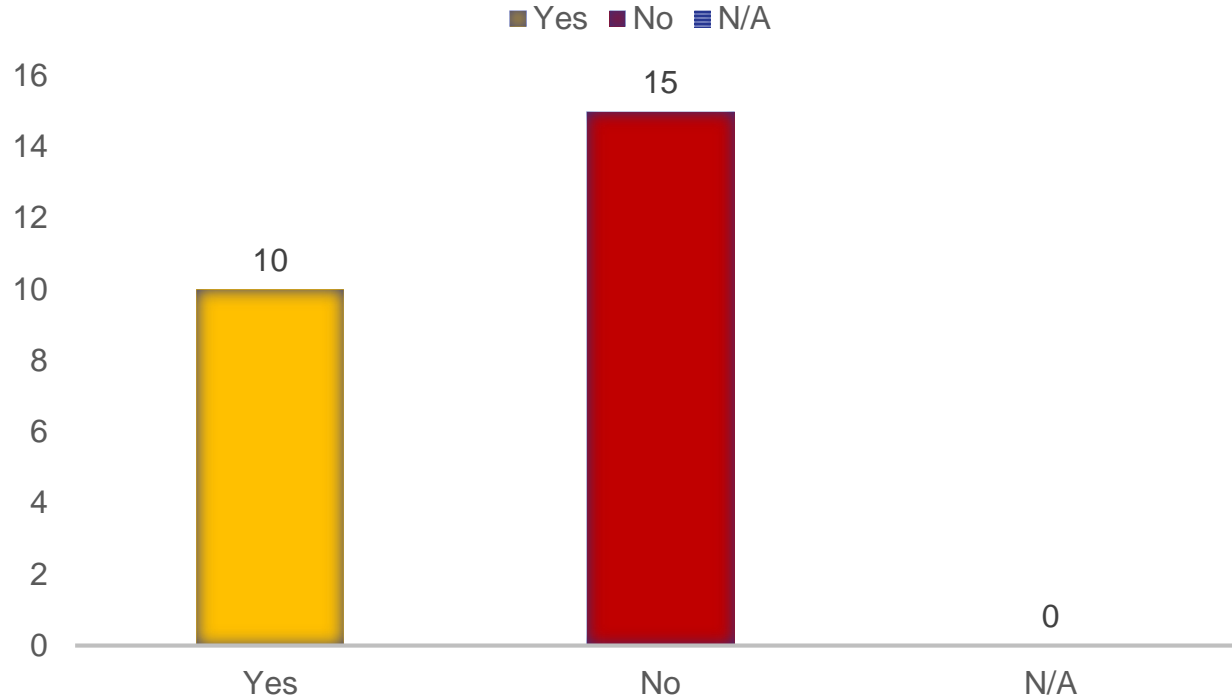


# Q5: Did you feel that compensation and benefits were fair compared to responsibilities of your job?

## REASON

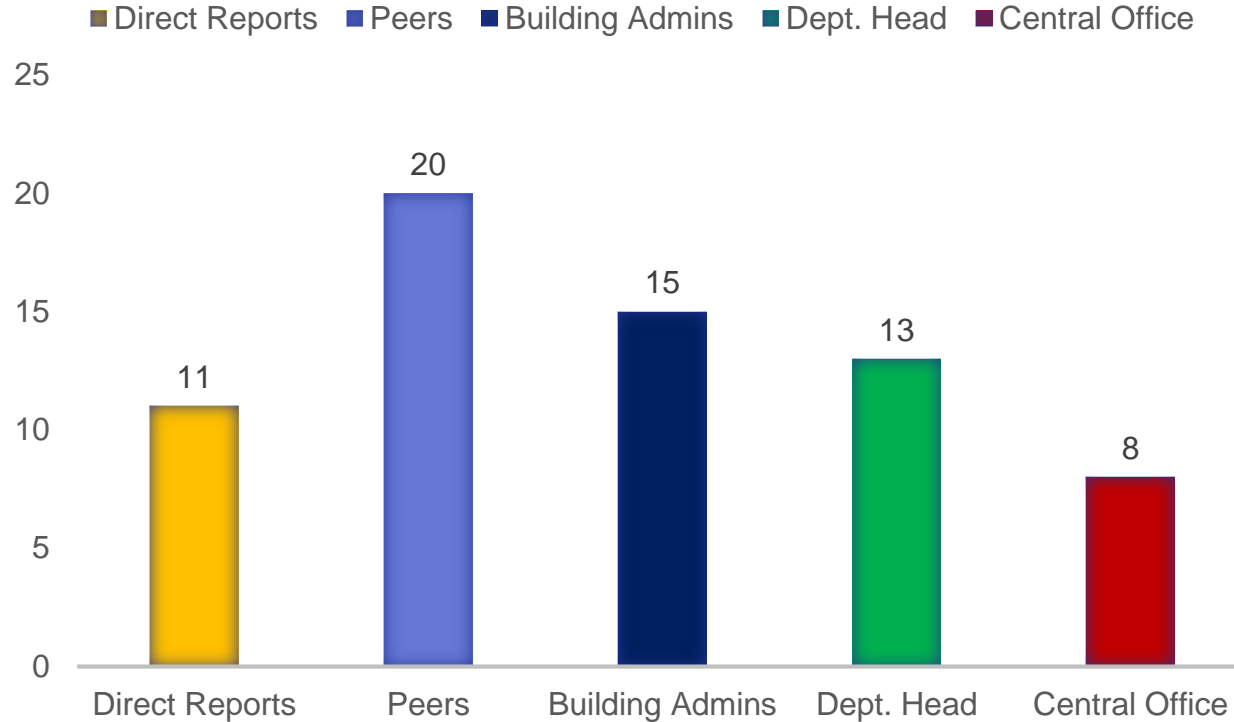


## Q6: If given the right changes, would you have considered staying?

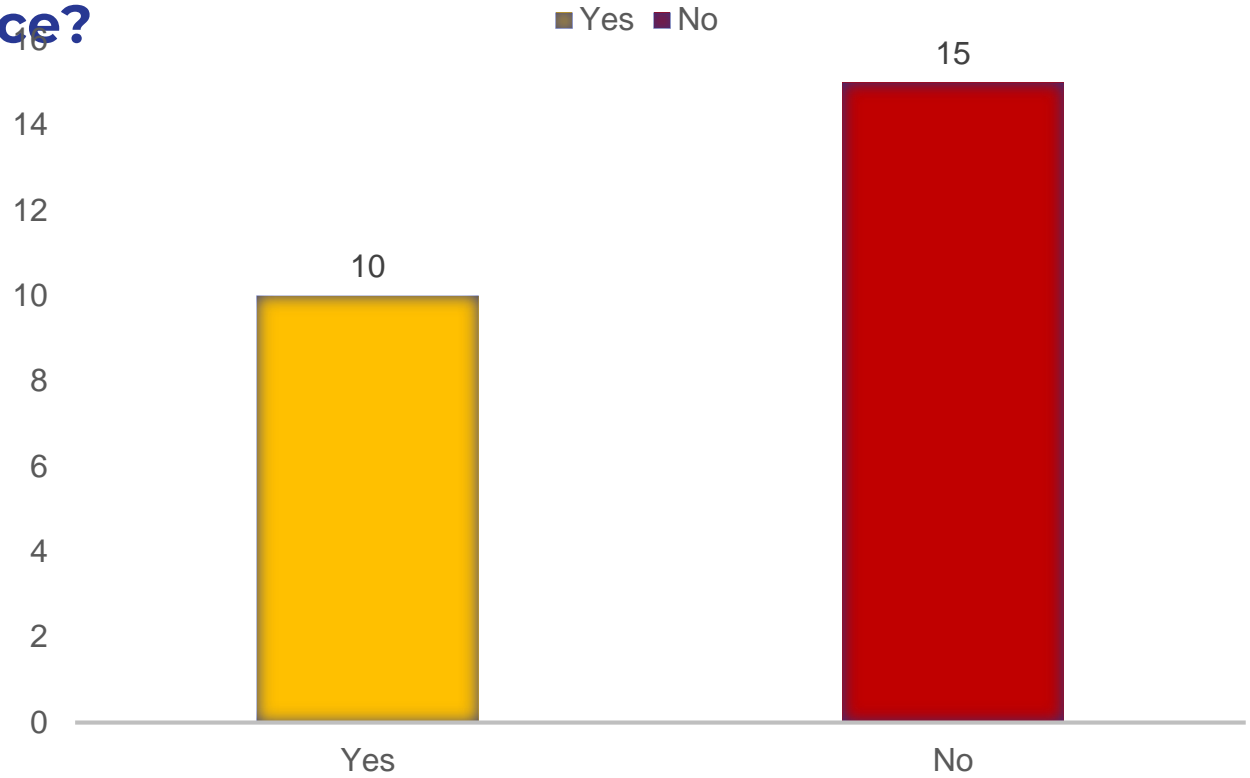


# Q7: Did you feel safe at work? (check all that apply)

SERIES 1



# Q8: Would you recommend MPS as an employer of choice?



## Q9: How would you describe your position with the District?

