

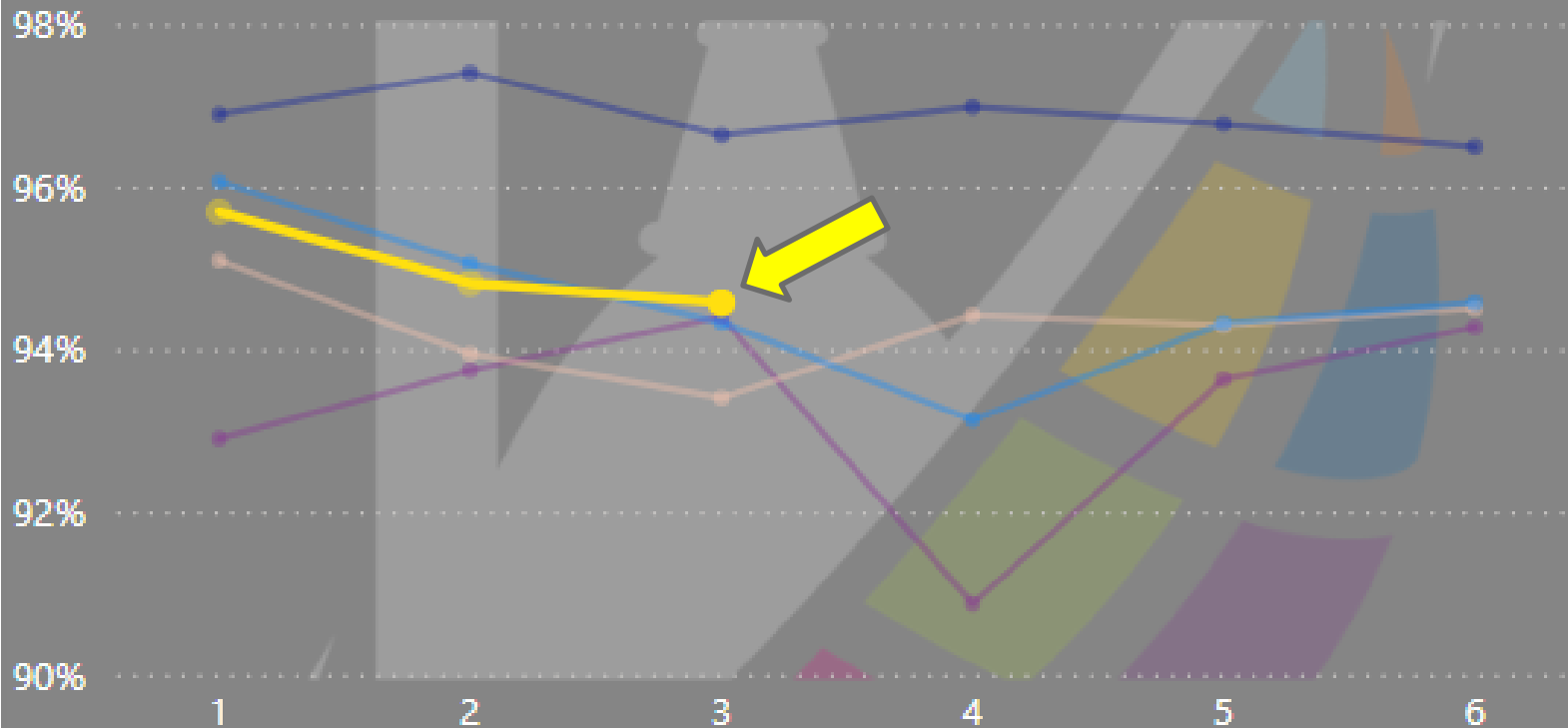
# Attendance Report: Reporting Period 3 November 4 - December 20, 2024



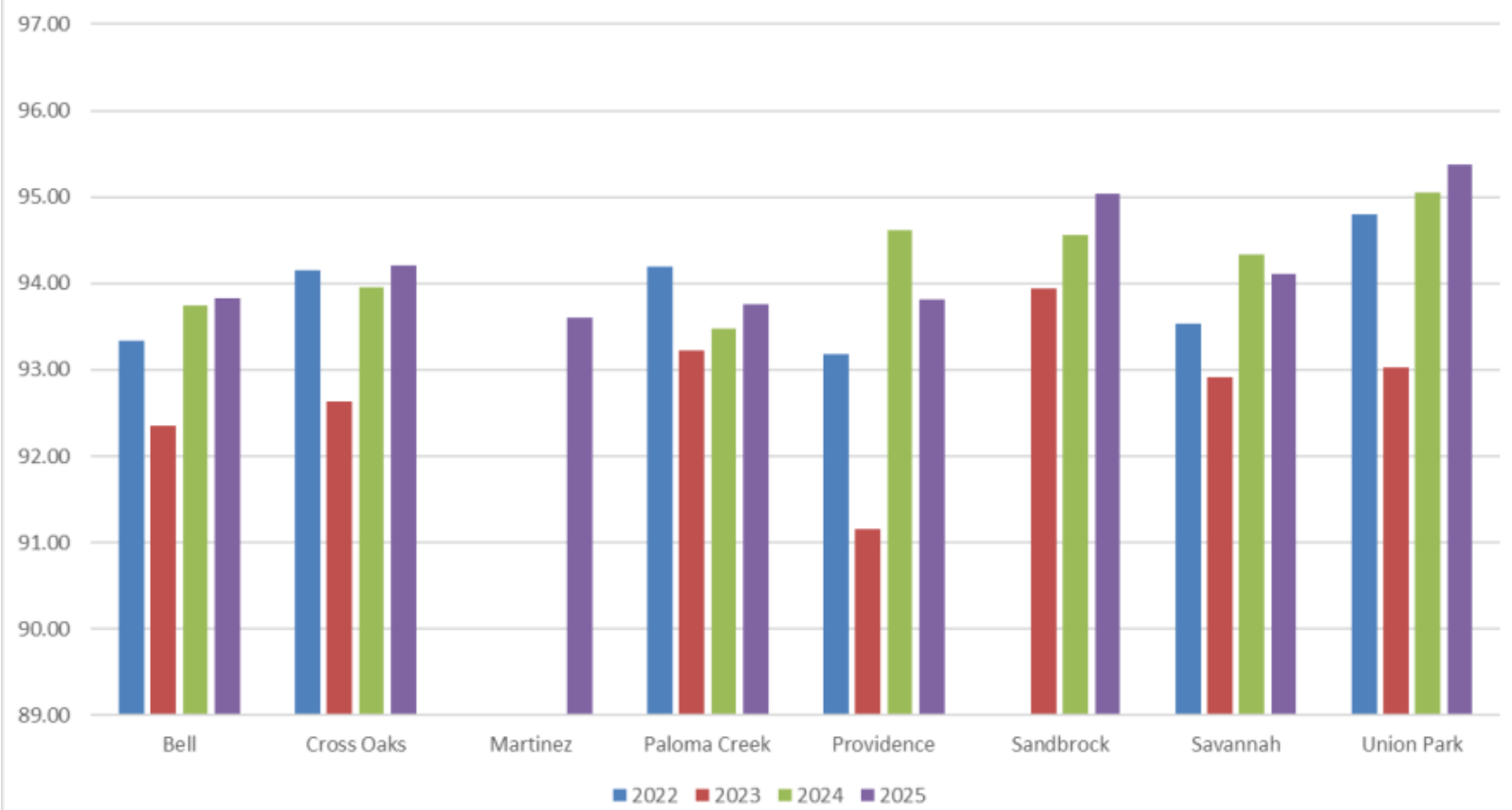
Student Support Services  
Lesli Guajardo

# ADA by Academic Year and Reporting Period

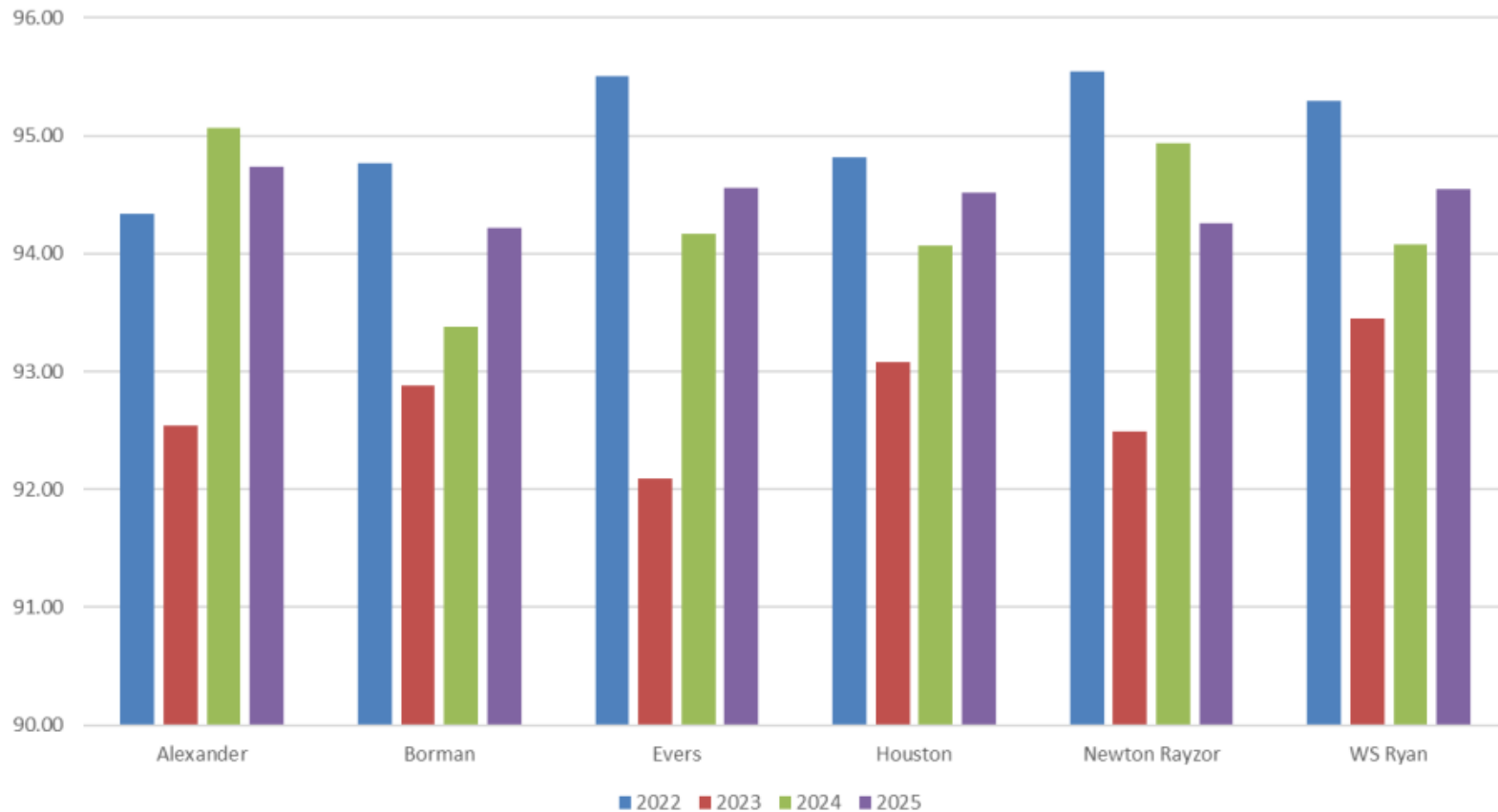
Academic Year ● 2021 ● 2022 ● 2023 ● 2024 ● 2025



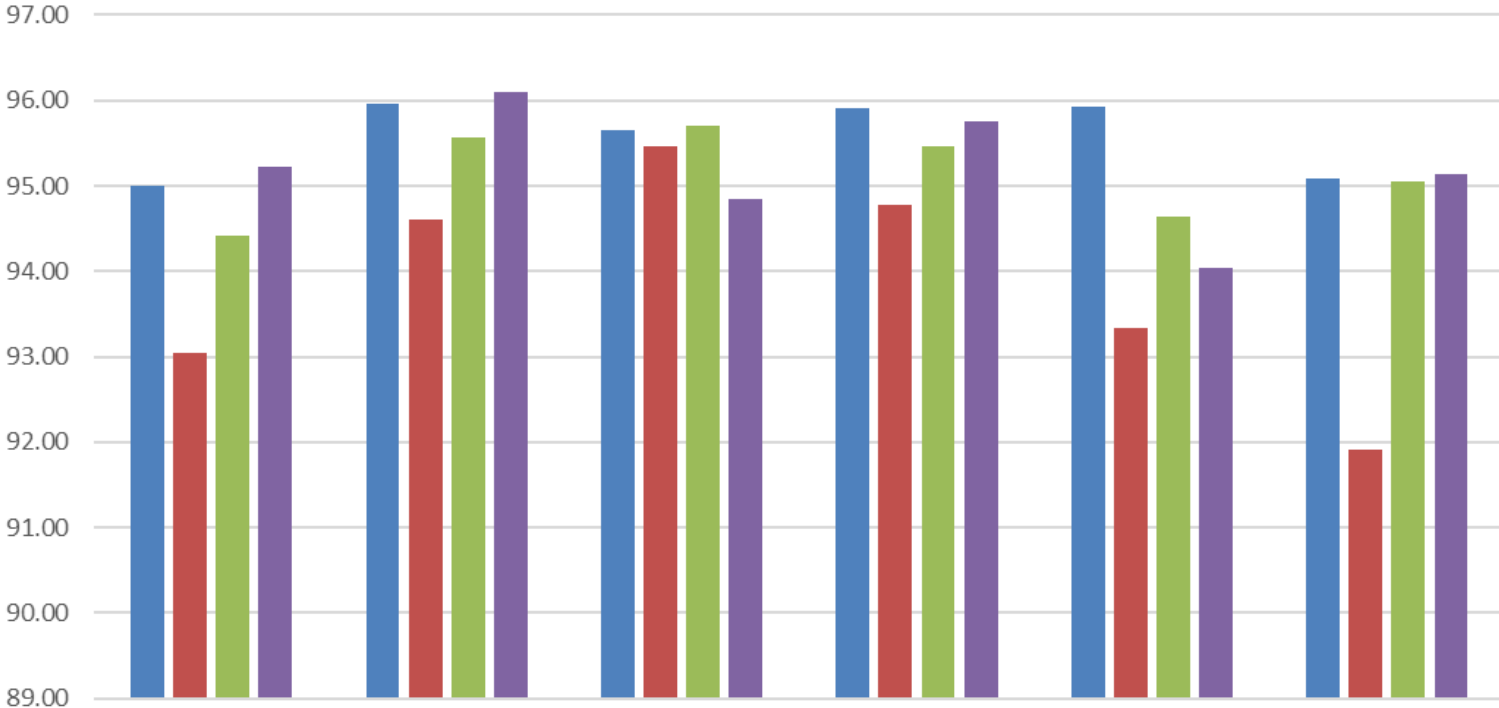
### Braswell Zone Elementary RP 3



### Denton Zone Elementary RP 3

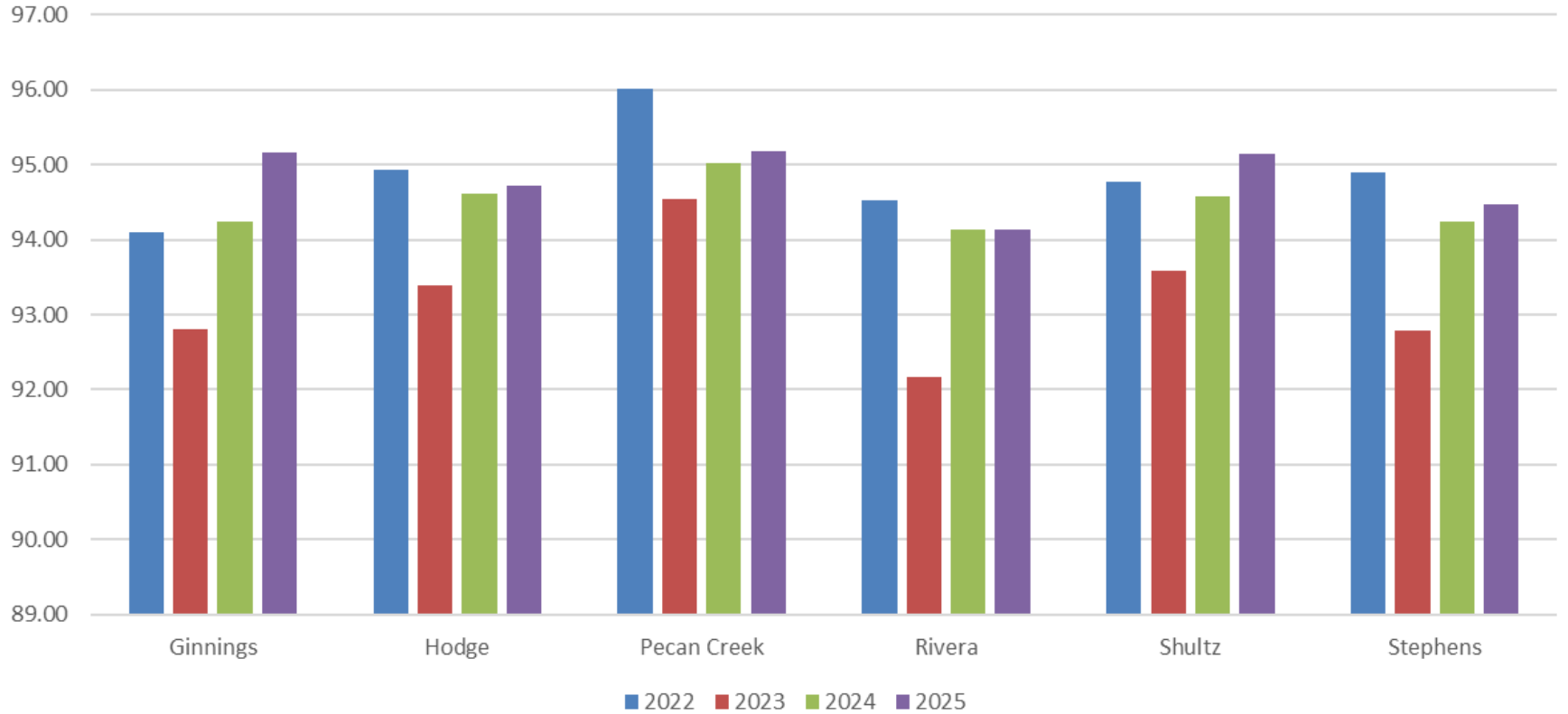


### Guyer Zone Elementary RP 3

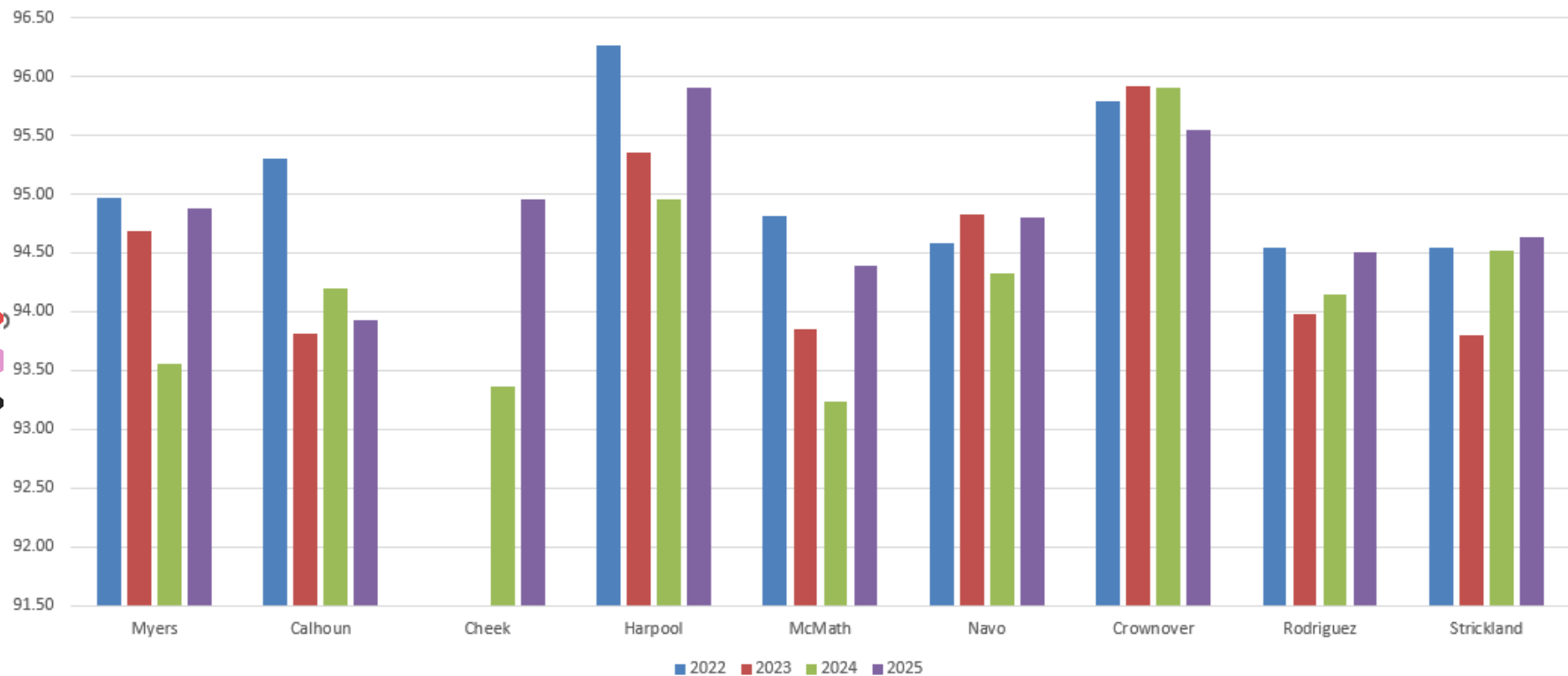


■ 2022 ■ 2023 ■ 2024 ■ 2025

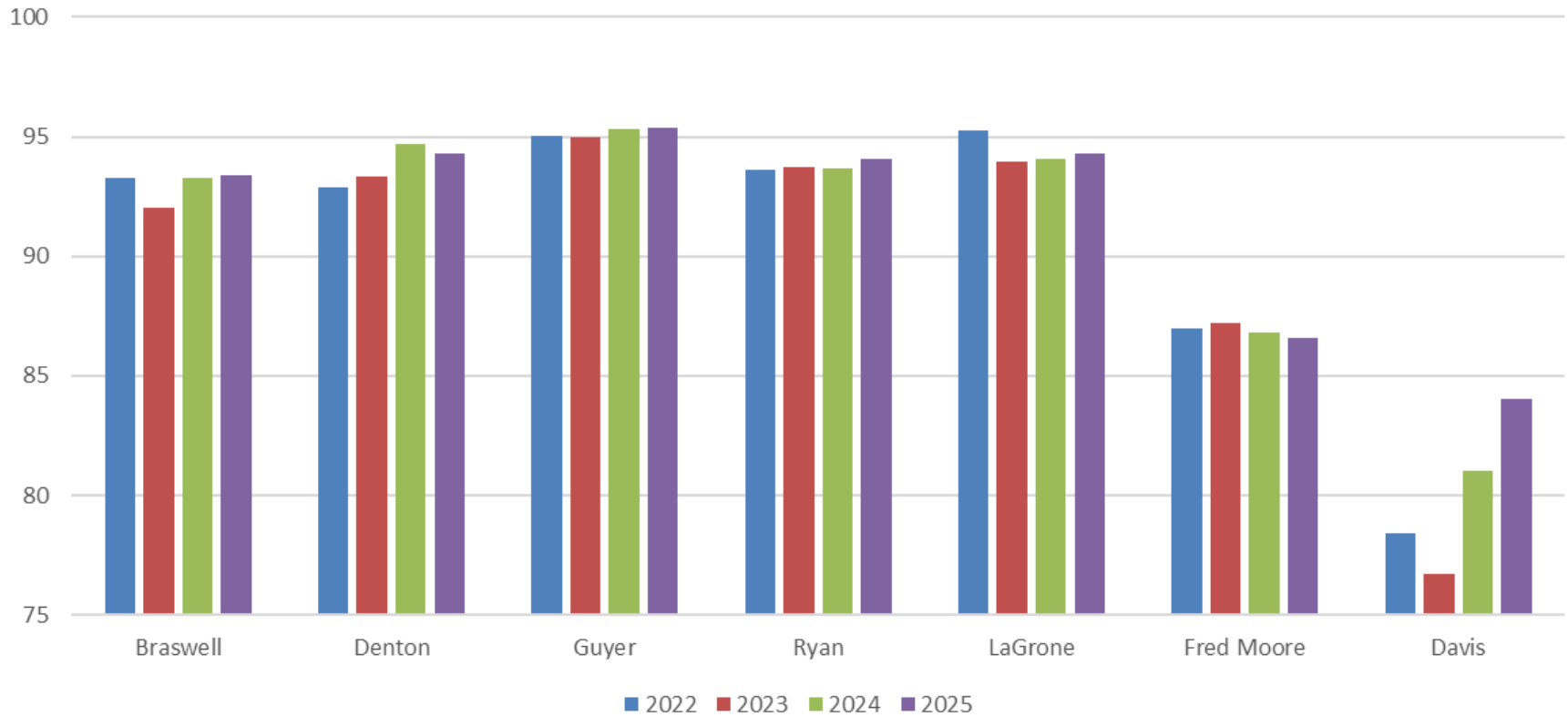
# Ryan Zone Elementary RP 3



### Middle School Reporting Period 3



# High School Reporting Period 3







*Questions?*