



Expect
More.

Winter FastBridge Update

Presented to the School Board
February 2, 2026

What is FastBridge?

- Universal screener to measure strength of Tier 1 instruction and identify students for additional support
- earlyReading, earlyMath (K-1)
- aReading, aMath (Grades 2-12)



Expect
More.

Benchmarks

Benchmarks are test-specific cut scores that indicate the student's risk of performing below a future performance target (typically year end). These align with national normed percentiles:

- High risk: Below the 15th percentile
- Some risk: 15th - 39th percentile
- Low risk: 40th - 99th percentile OR
 - Low risk: 40th - 70th percentile
 - Advanced: 71st - 99th percentile

!!! High Risk ! Some Risk low risk Advanced

These risk indicators can be used to identify a student's level of instructional need.

Note that low risk is not no risk – particularly at the low end of the range.



Expect
More.

How are schools using FastBridge?

- Identify gaps in Tier 1 Instruction
- Identify students for tiered intervention
- Supporting work in CAT (Professional Learning Communities), BARR meetings, BILT
- Looking at student growth, progress monitoring



Expect
More.



earlyReading

What does earlyReading measure?

Foundational literacy skills: phonemic awareness, phonics, fluency

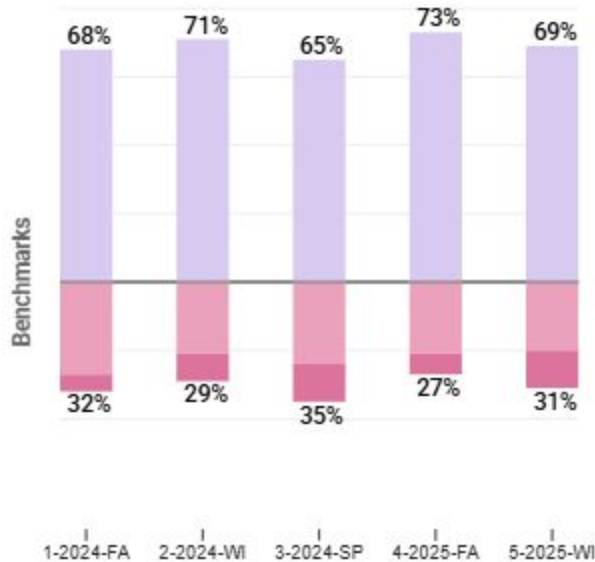
	Fall	Winter	Spring
Kindergarten	Concepts of Print Letter Names Letter Sounds Onset Sounds	Letter Sounds Onset Sounds Nonsense Words Word Segmenting	Letter Sounds Nonsense Words Sight Words Word Segmenting
1st Grade	Nonsense Words Sentence Reading Sight Words Word Segmenting	CBM (passages) Reading Nonsense Words Sight Words Word Segmenting	CBM (passages) Reading Nonsense Words Sight Words Word Segmenting



Expect
More.

KINDERGARTEN

+1% vs 2024-FALL



!! High Risk ! Some Risk low risk ★ Advanced

earlyReading - K

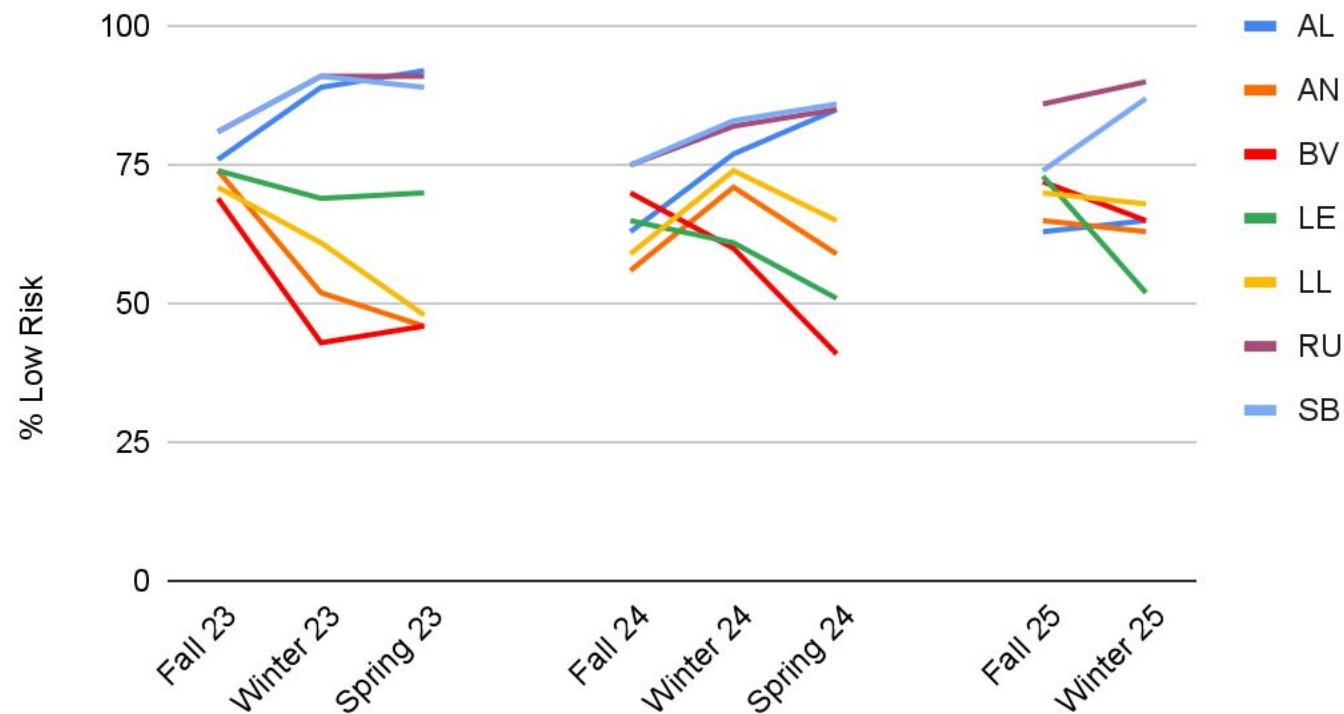
- Kindergarten class came in higher this fall -- went from 68% to 73% low risk
- Return to pattern of dropping in winter
- Note: winter screening was before break instead of after



Expect
More.

early Reading Kindergarten Highlights

Low Risk % Over Time - earlyReading K



Expect
More.

ONE

+6% vs 2024-FALL



earlyReading - Grade 1

- Smaller growth from fall to winter than in years past
- Pattern of growth from Fall to Winter

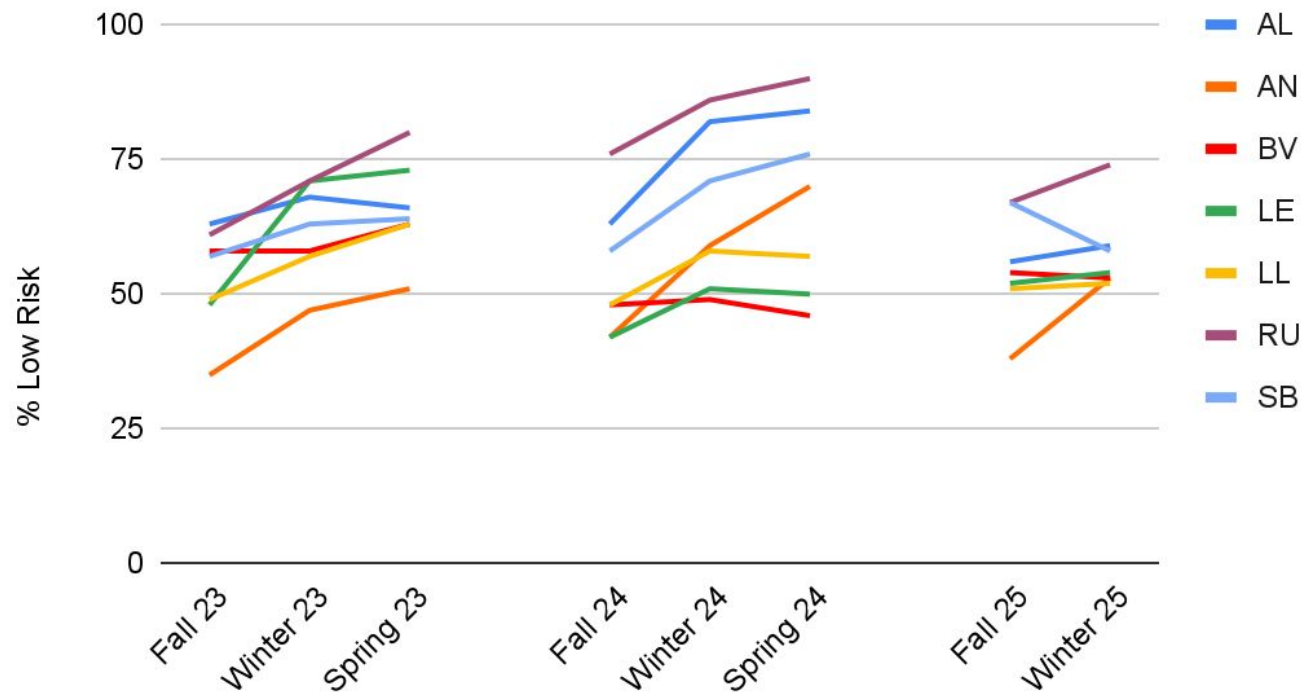
!! High Risk ! Some Risk low risk ★ Advanced



Expect
More.

early Reading Grade 1 Highlights

Low Risk % Over Time - earlyReading G1



Expect
More.



aReading

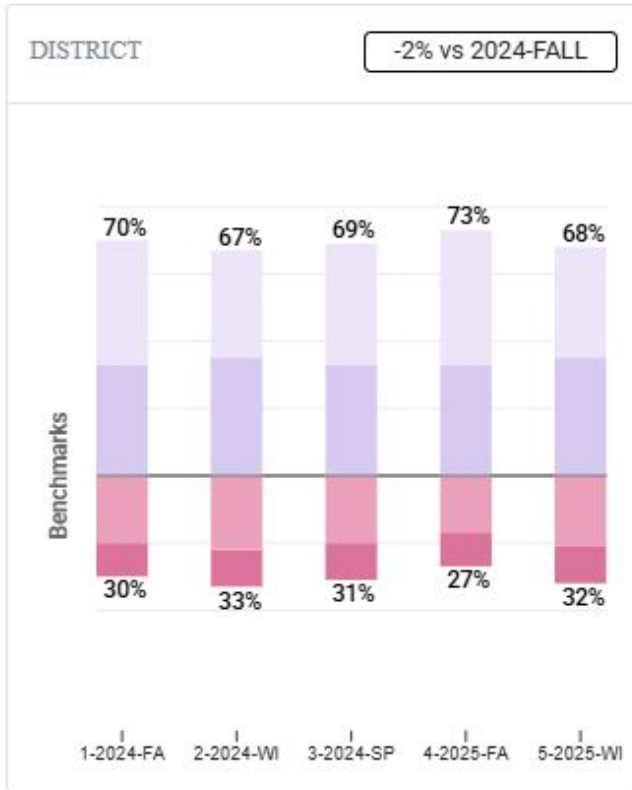
What does aReading measure?

- General, grade-level literacy skills
- Assesses broad reading ability including phonics, vocabulary, comprehension, and morphology

30 minutes, computer-based adaptive assessment



Expect
More.



!!! High Risk ! Some Risk Low risk ★ Advanced

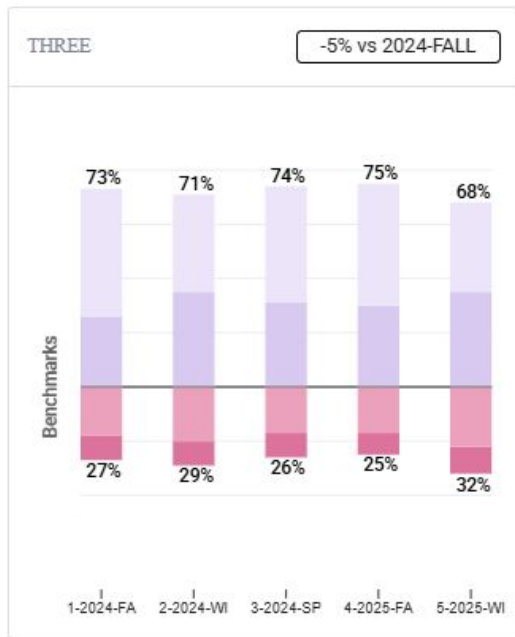
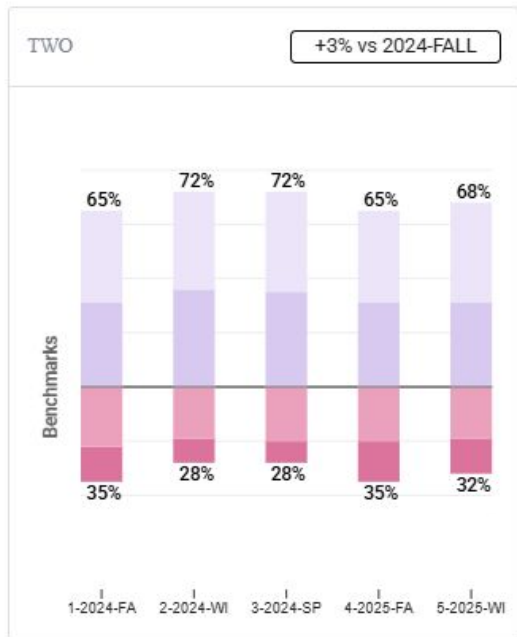
aReading - District

- Dip from fall to winter
- Overall a slight improvement over last year
 - Winter to winter (most stable)
 - Note: We are now able to compare to last year including secondary data
- About half of "on track" students are at the "advanced" level



Expect
More.

aReading - District (Grades 2/3)



- Second grade is the only elementary grade that grew from fall to winter
 - Outperforming 2023
- Third grade came in higher (75% vs. 73%) but dropped to 68%

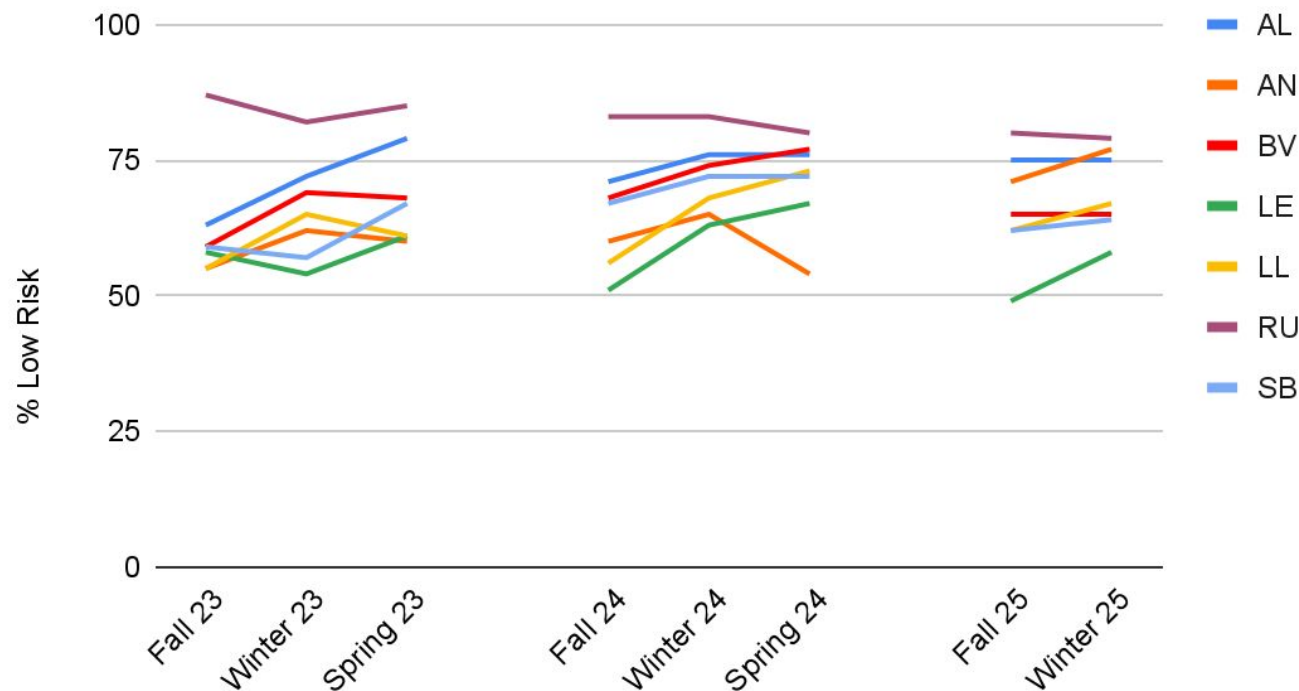
!!! High Risk ! Some Risk low risk ★ Advanced



Expect
More.

aReading Grade 2 Highlights

Low Risk % Over Time - aReading G2



Expect
More.

Andersen Grade 2



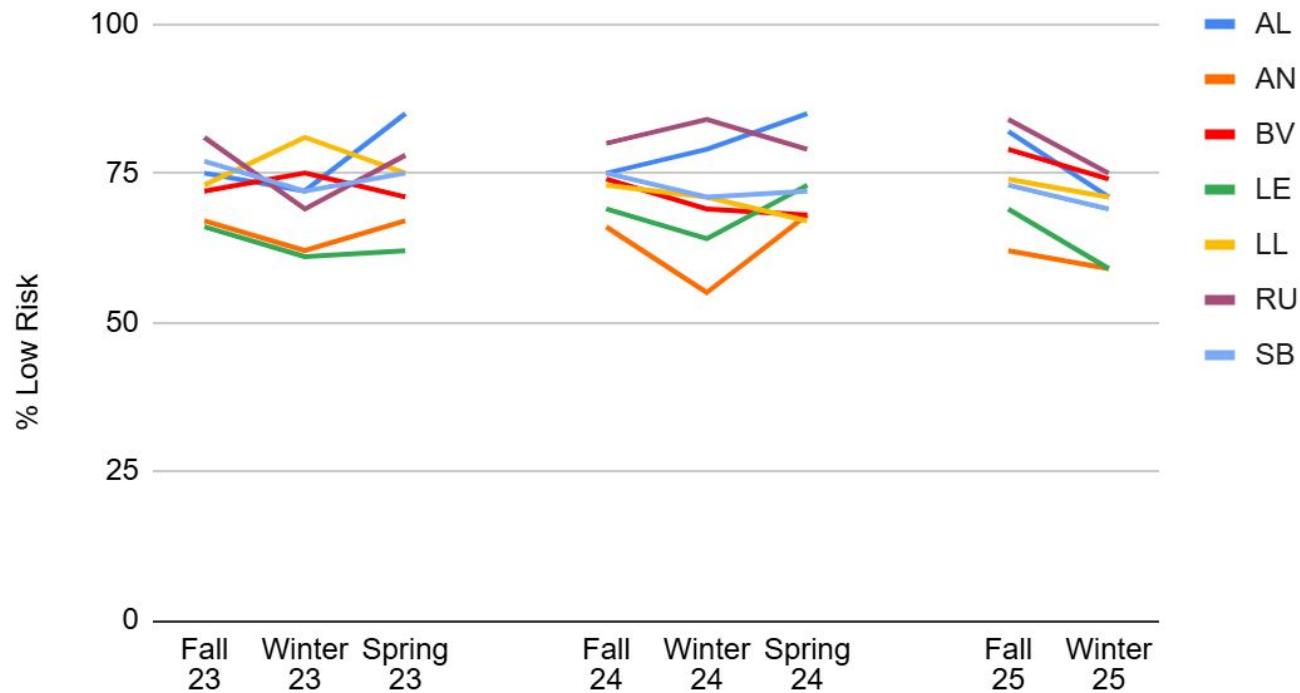
- Growth in first grade last year carried through to this year's second graders
 - Curriculum pilot in first grade
 - Second year of experience



Expect
More.

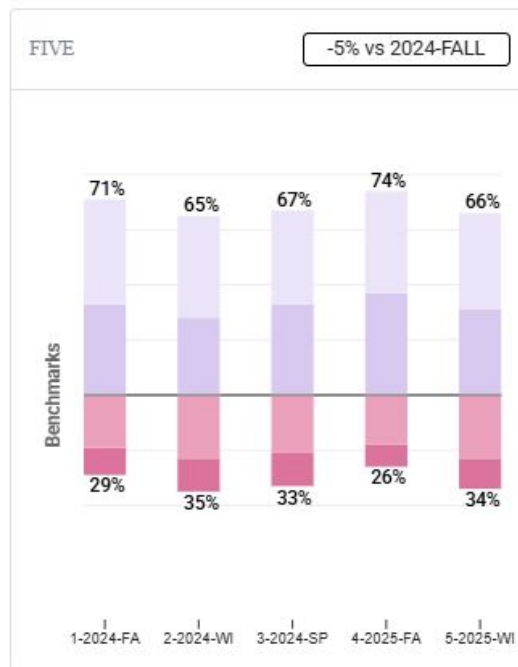
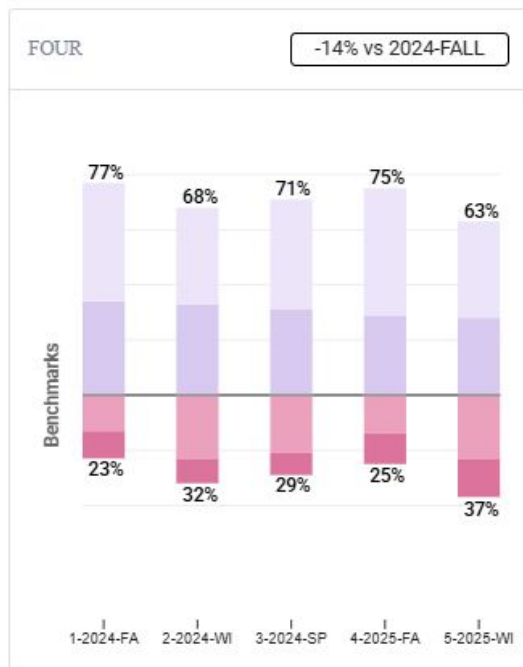
aReading Grade 3 Highlights

Low Risk % Over Time - aReading G3



Expect
More.

aReading - District (Grades 4/5)



- Multi-year trend of fall to winter drop continues
 - Grade 4: 75% to 63%
 - Grade 5: 74% to 66%

!! High Risk ! Some Risk low risk ★ Advanced



Expect
More.

CBMreading - District (Grades 4/5)



- CBMreading is a measure of oral reading fluency and accuracy
- Measure of foundational skills: Impacts the general reading ability and comprehension measured by aReading

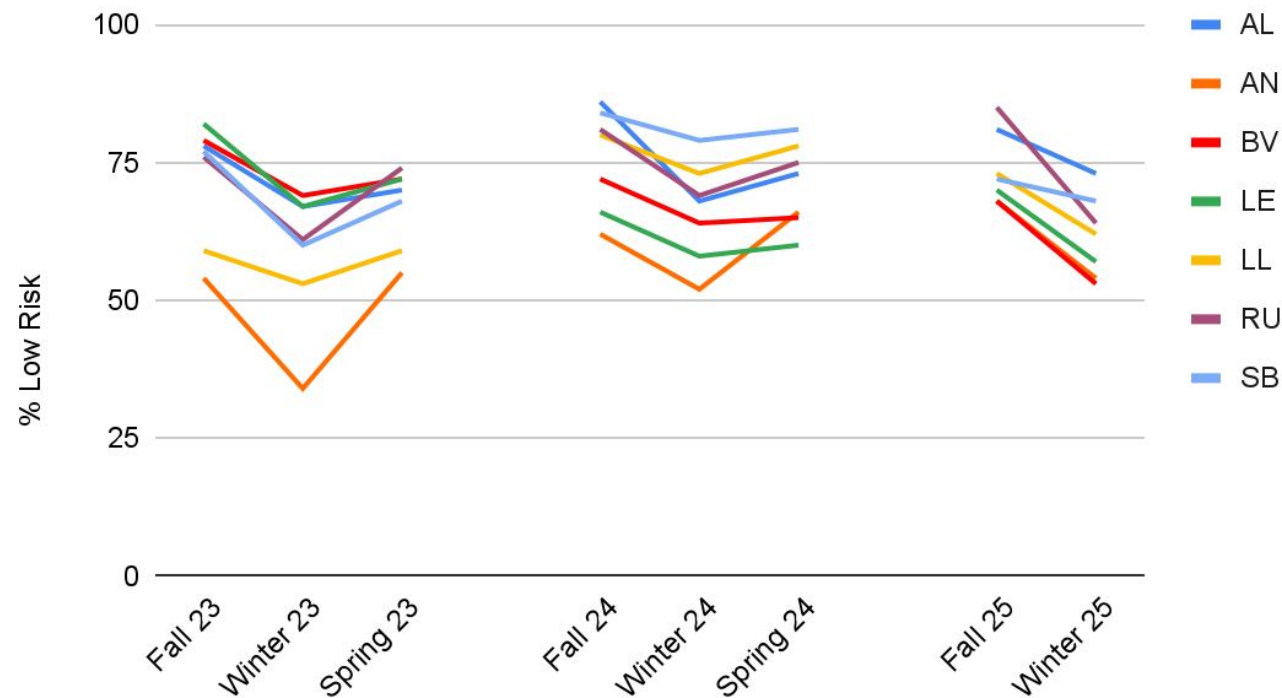
!!! High Risk ! Some Risk low risk ★ Advanced



Expect
More.

aReading Grade 4 Highlights

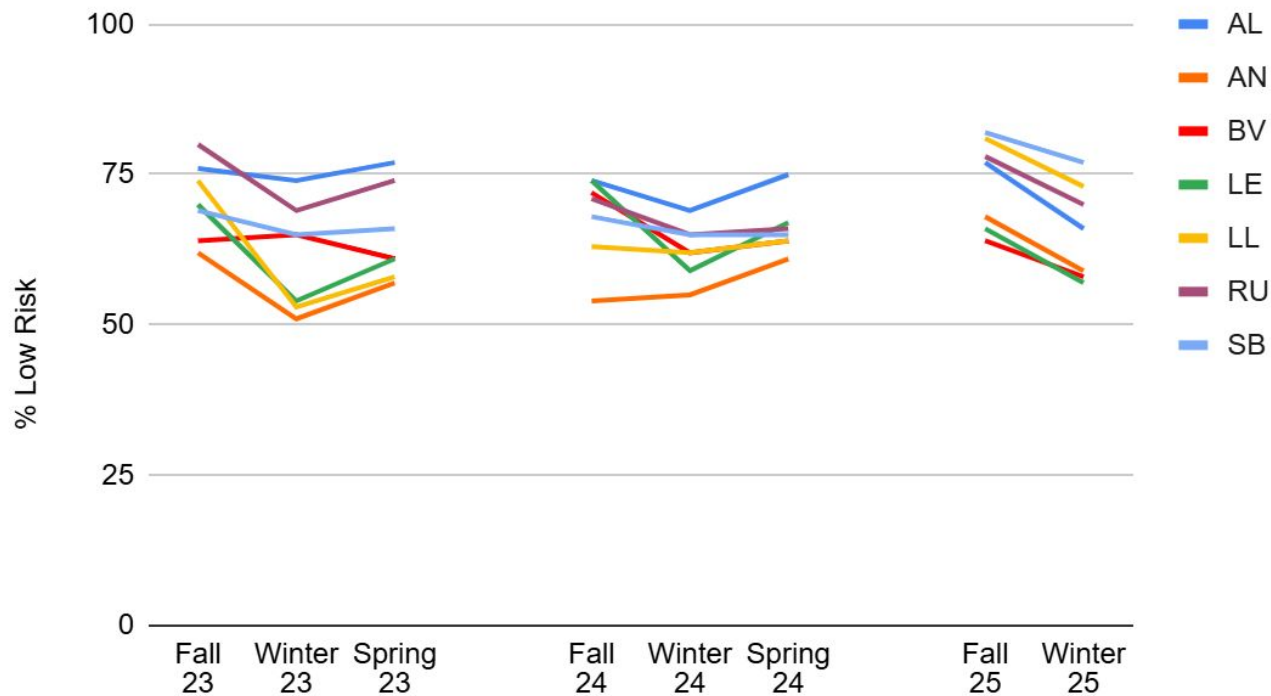
Low Risk % Over Time - aReading G4



Expect
More.

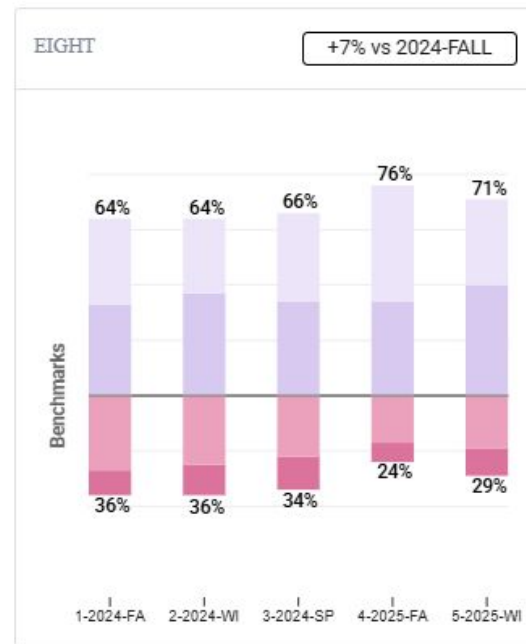
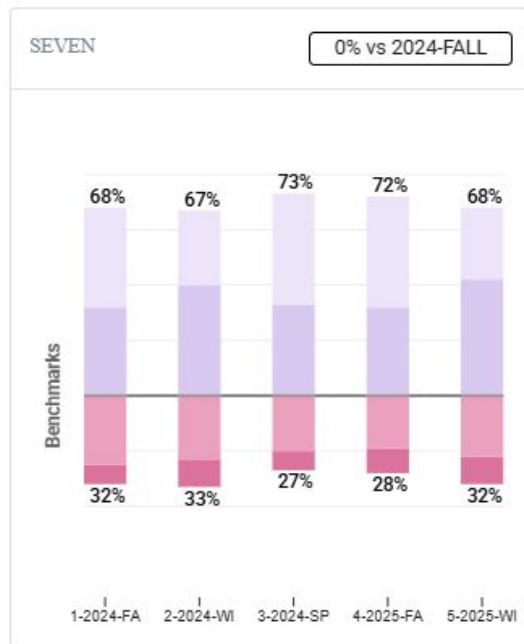
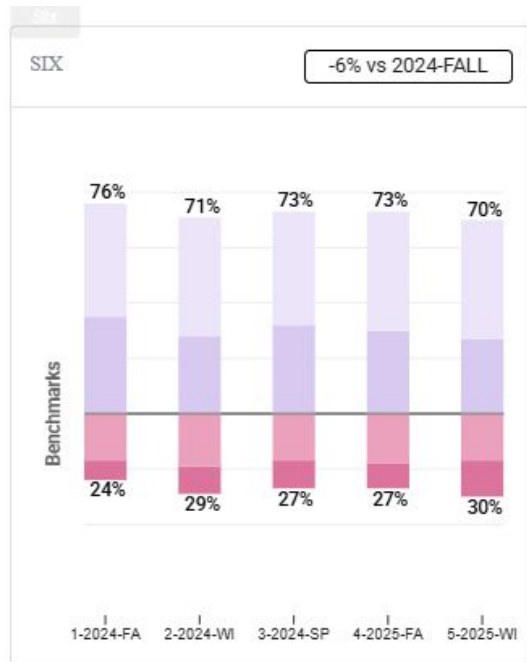
aReading Grade 5 Highlights

Low Risk % Over Time - aReading G5



Expect
More.

aReading - District (Grades 6/7/8)



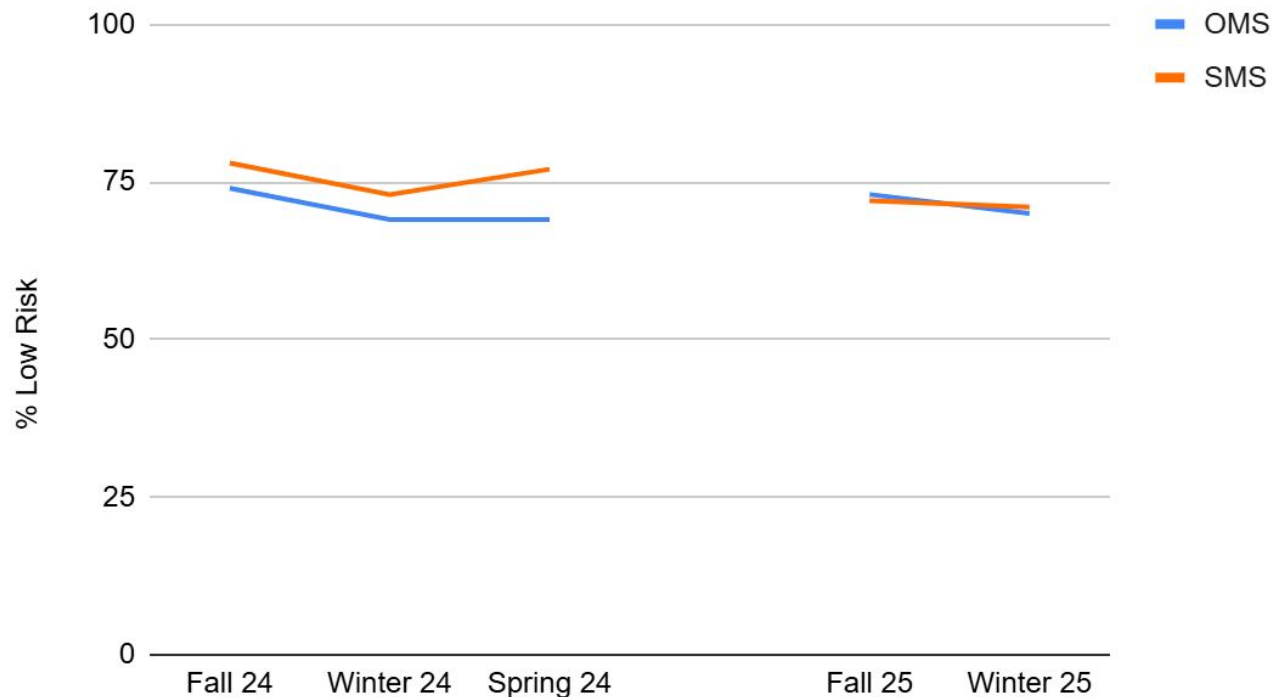
!!! High Risk ! Some Risk low risk ★ Advanced



Expect
More.

aReading Grade 6 Highlights

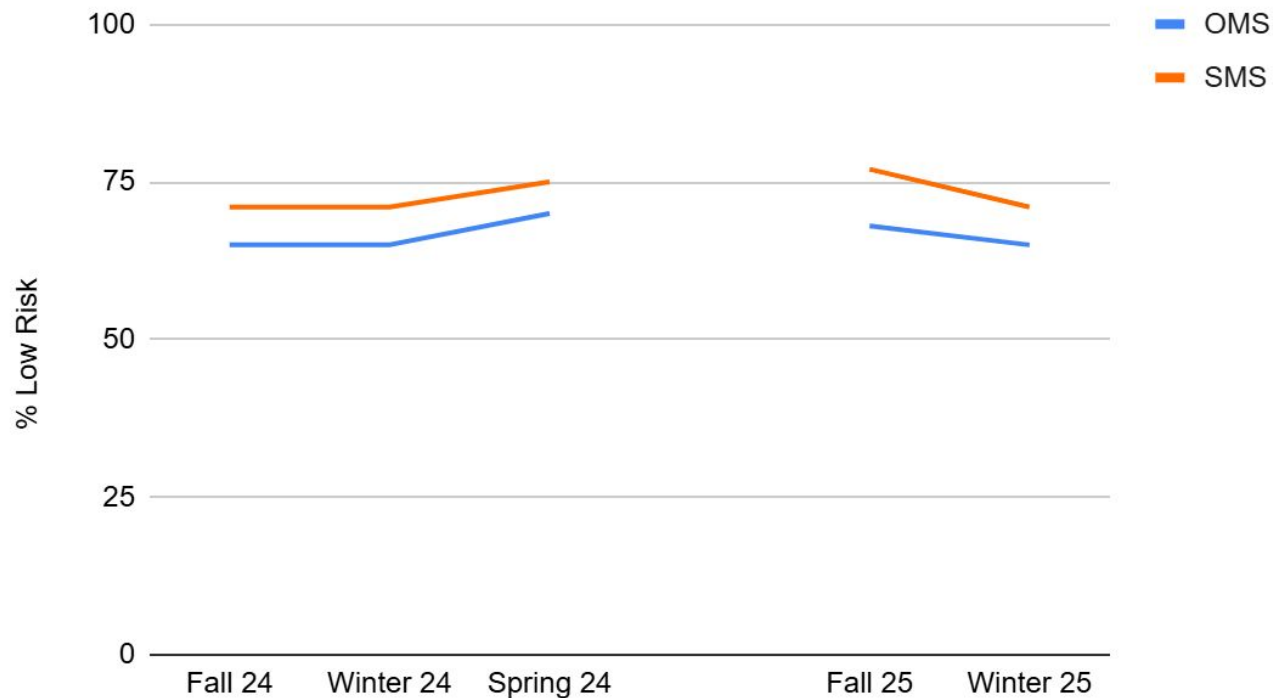
Low Risk % Over Time - aReading G6



Expect
More.

aReading Grade 7 Highlights

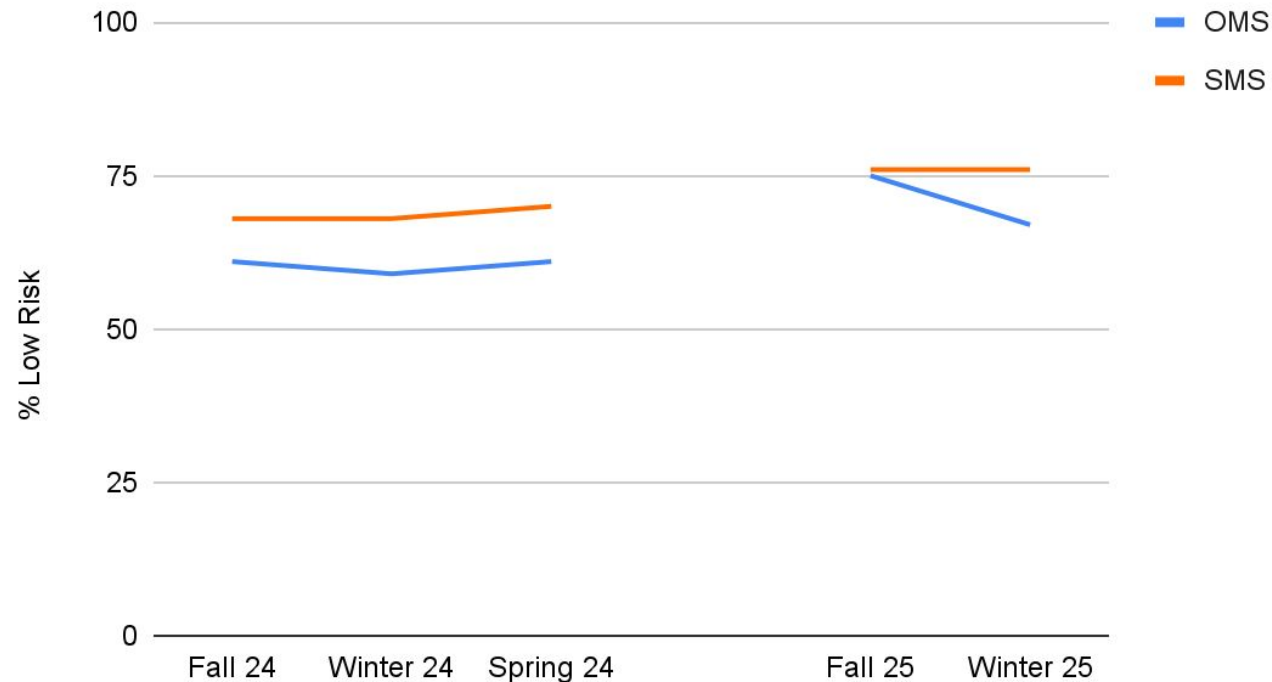
Low Risk % Over Time - aReading G7



Expect
More.

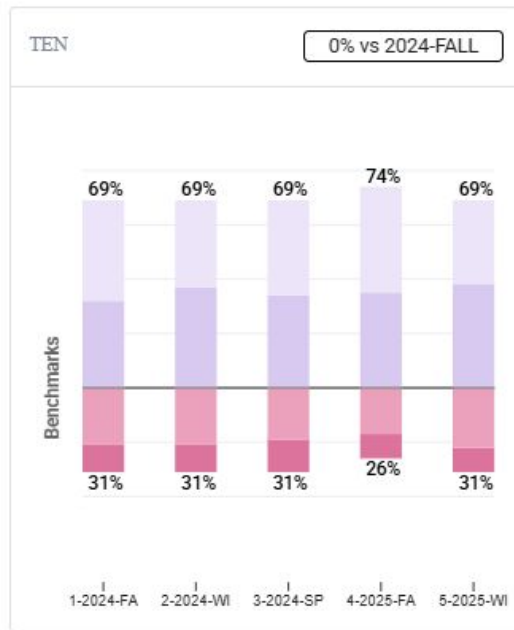
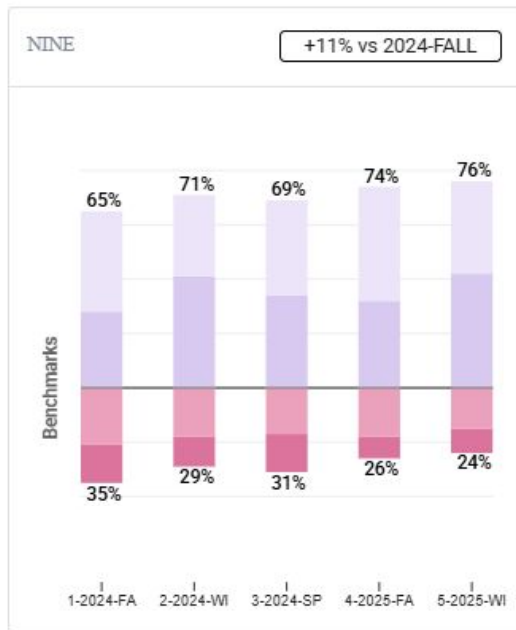
aReading Grade 8 Highlights

Low Risk % Over Time - aReading G8



Expect
More.

aReading - District (Grades 9/10)



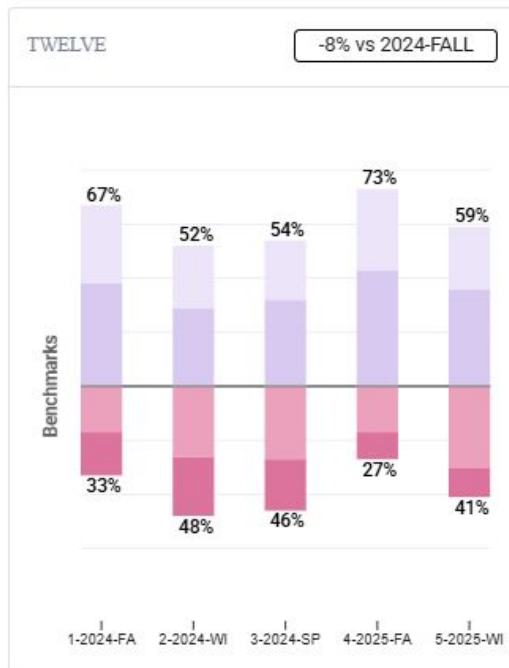
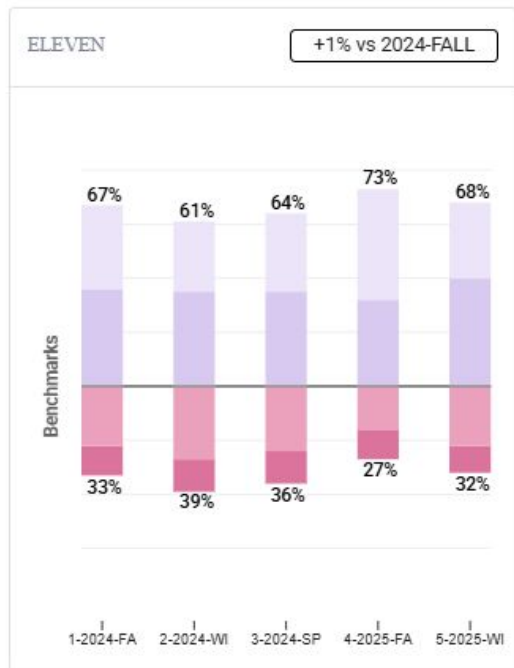
!! High Risk ! Some Risk low risk ★ Advanced

- Signs of growth in grade 9 continue from last year
 - 74% to 76% low risk
- Stable at grade 10 (69%)



Expect
More.

aReading - District (Grades 11/12)



- Continued trend of dips from fall to winter
- Winter over winter growth in both grades

!!! High Risk ! Some Risk Low Risk ★ Advanced



Expect
More.

Winter Reading Longitudinal Data

Reading	K earlyReading	1 earlyReading	2 aReading	3 aReading	4 aReading	5 aReading	6 aReading	7 aReading
2020	N/A	N/A	65%	73%	71%	72%		
2021	59%	57%	67%	72%	75%	71%		
2022	66%	61%	69%	71%	72%	72%		
2023	71%	63%	66%	70%	61%	63%		
2024	70%	64%	72%	71%	68%	65%	71%	
2025	69%	59%	68%	68%	63%	67%	70%	68%



Expect
More.

FastBridge aReading vs. MCA Reading (2025)

3rd - 8th, 10th Grade	Does Not Meet	Partially Meets	Meets	Exceeds
highRisk	321	55	9	0
someRisk	348	346	175	2
lowRisk	108	339	845	98
Advanced	4	42	681	663



Expect
More.

FastBridge vs. MCA

FastBridge Percentile Cut	MCA Percent Proficient
40th Percentile+	83%
50th Percentile+	89%
60th Percentile+	94%
65th Percentile+	96%

FastBridge Percentile Band	MCA Percent Proficient	Count
0-10	3%	256
10-20	5%	293
20-30	15%	376
30-40	34%	365
40-50	52%	233
50-60	69%	488
60-70	85%	470
70-80	94%	468
80-90	98%	476
90-100	99%	398



Expect
More.

FastBridge Reading Takeaways:

- Ability to identify areas of need and areas of growth
 - Down to school, grade, teacher level
- Uneven progress across elementary grade levels as new curricula are implemented
- Consistent fall to winter drop in elementary
- Growth in grades 8 and 9, stability in other secondary grades



Expect
More.



earlyMath

What does earlyMath measure?

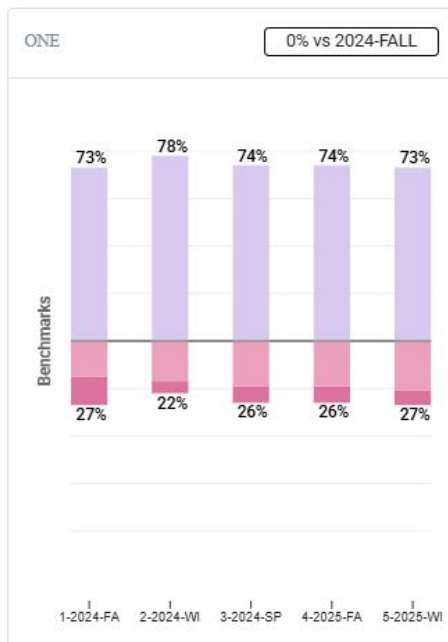
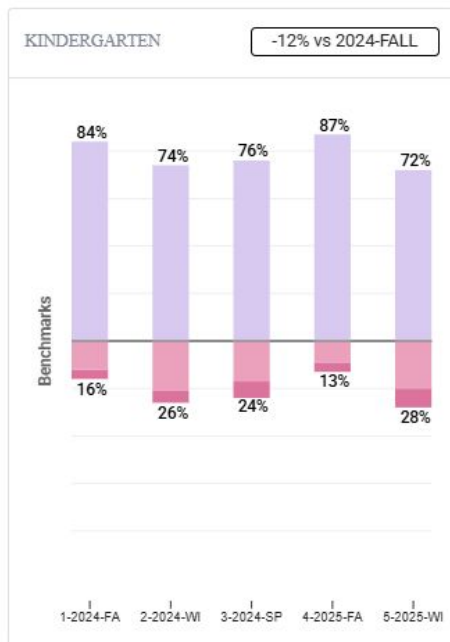
Foundational numeracy skills in the domains of number, relations, and operations

	Fall	Winter	Spring
Kindergarten	Matching Quantity Number Sequence Numeral Identification	Decomposing Numbers Number Sequence Numeral Identification	Decomposing Numbers Number Sequence Numeral Identification
1st Grade	Decomposing Numbers Number Sequence Numeral Identification	Decomposing Numbers Number Sequence Place Value	Decomposing Numbers Place Value Story Problems



Expect
More.

earlyMath - District



- Drop in Kindergarten from 87% to 72% low risk
 - Similar to last year
 - Consistent across schools
- First grade remaining very consistent

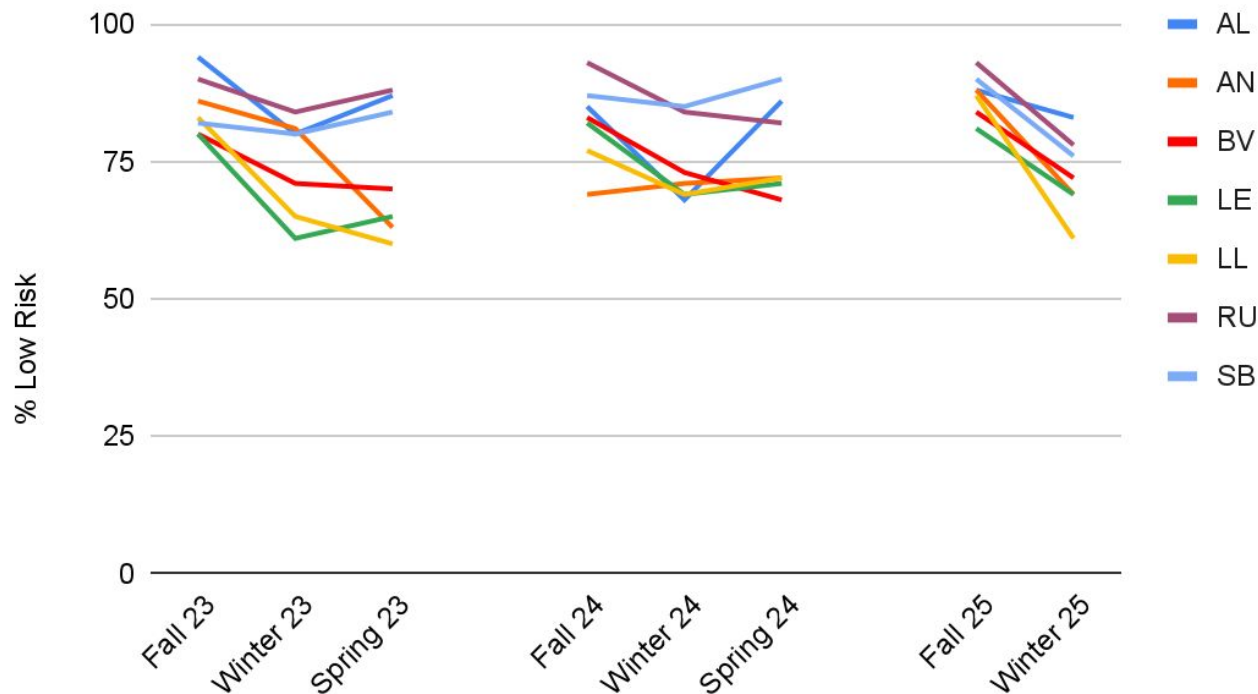
!! High Risk ! Some Risk low risk ★ Advanced



Expect
More.

earlyMath Kindergarten Highlights

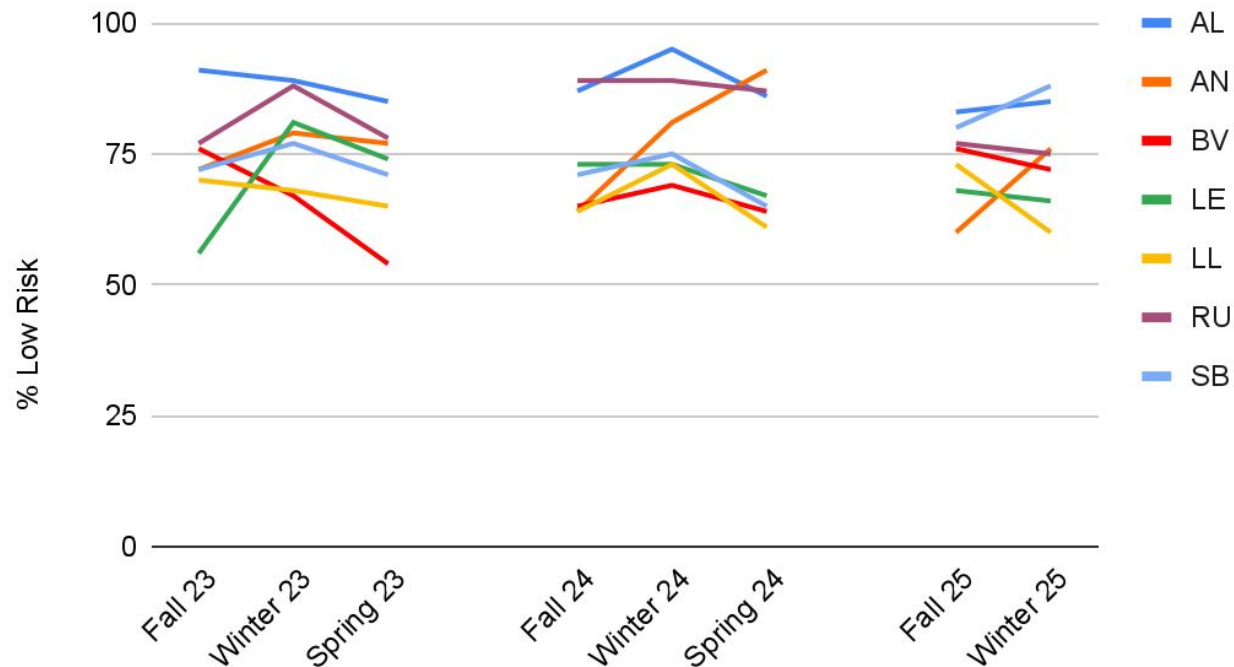
Low Risk % Over Time - earlyMath K



Expect
More.

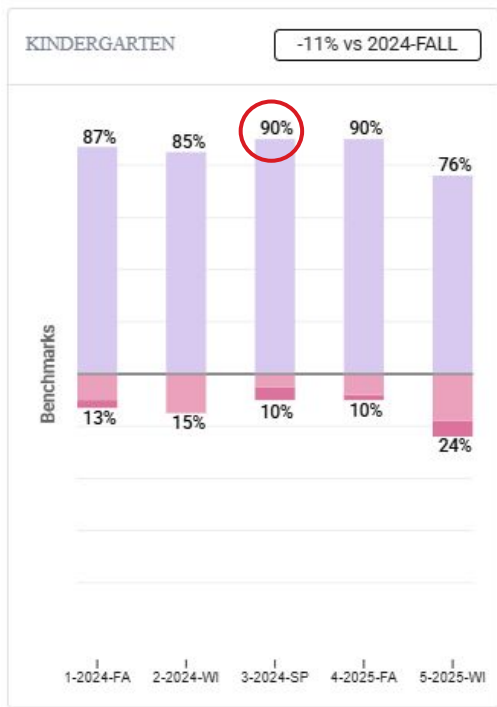
earlyMath Grade 1 Highlights

Low Risk % Over Time - earlyMath G1



Expect
More.

Stonebridge earlyMath



- Kindergarten holding steady at 71% low risk
- First grade came in higher from kindergarten, and grew 8 percentage points



Expect
More.



aMath

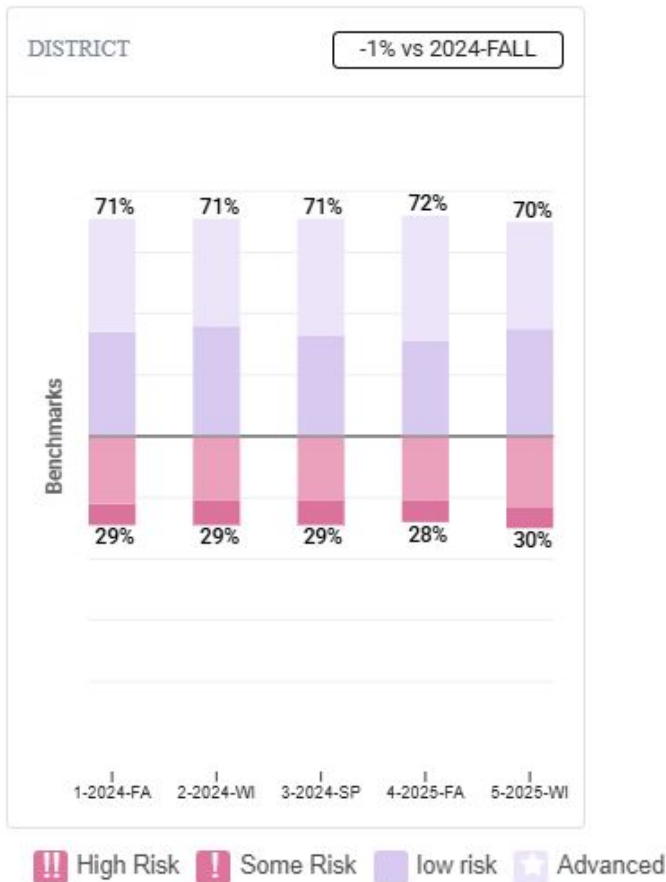
What does aMath measure?

- General, grade-level math skills
- Assesses broad math abilities and predicts overall achievement in operations and algebraic thinking; number and operations in base ten; number and operations with fractions; measurement and data; and geometry

30 minutes, computer-based adaptive assessment



Expect
More.



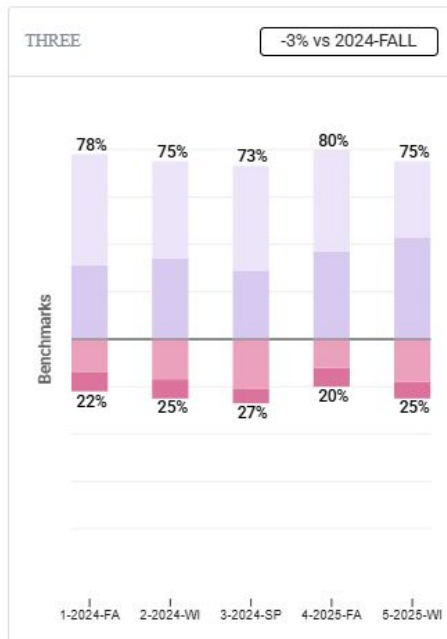
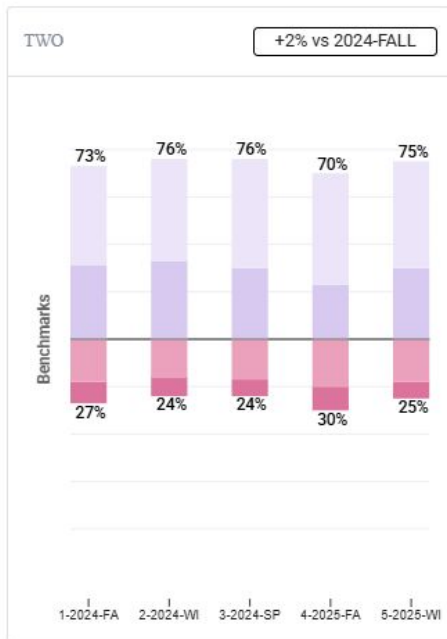
aMath - District

- Static from fall to winter
- Overall static from last year
 - Fall to fall shows a slight increase
 - Winter to winter shows a slight decrease (most stable)
 - Note: secondary fully included



Expect
More.

aMath - District (Grades 2/3)



!! High Risk ! Some Risk low risk ★ Advanced

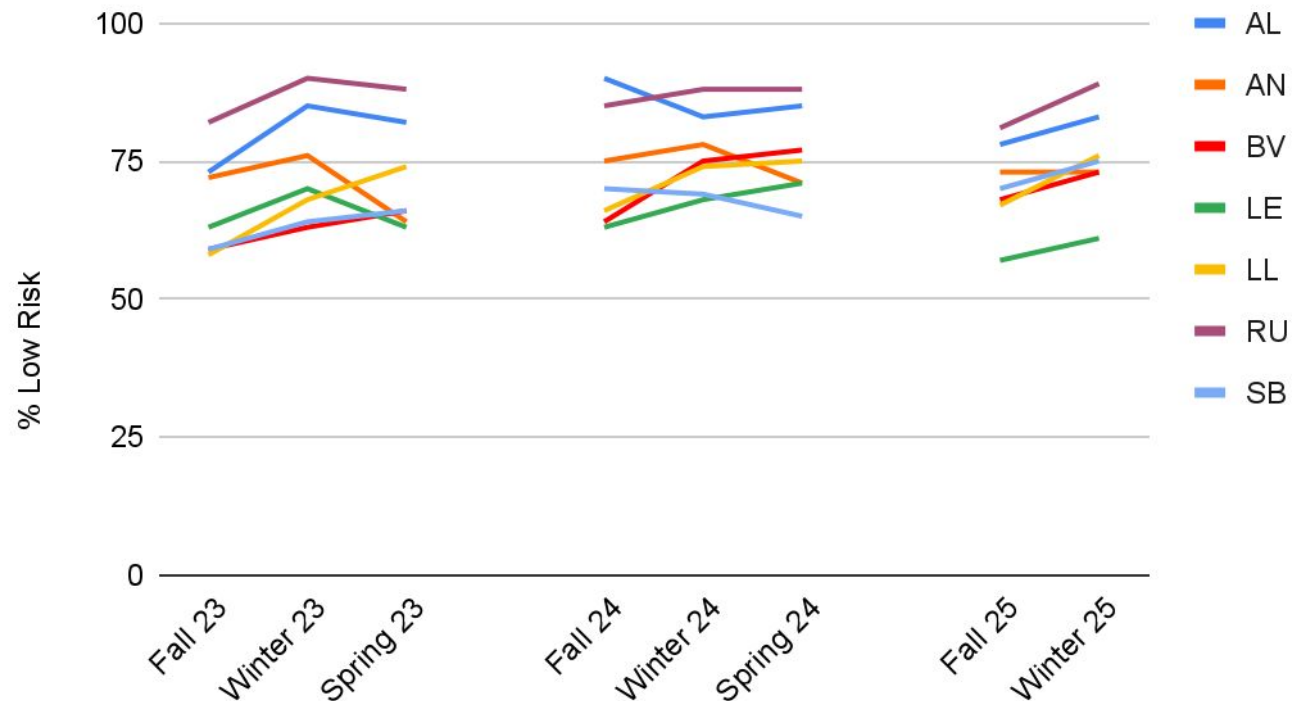
- Most growth in second grade from 70% to 75% low risk
 - Similar to last year
- Third grade more stable at 75% low risk



Expect
More.

aMath Grade 2 Highlights

Low Risk % Over Time - aMath G2



Expect
More.

aMath - District (Grades 4/5)



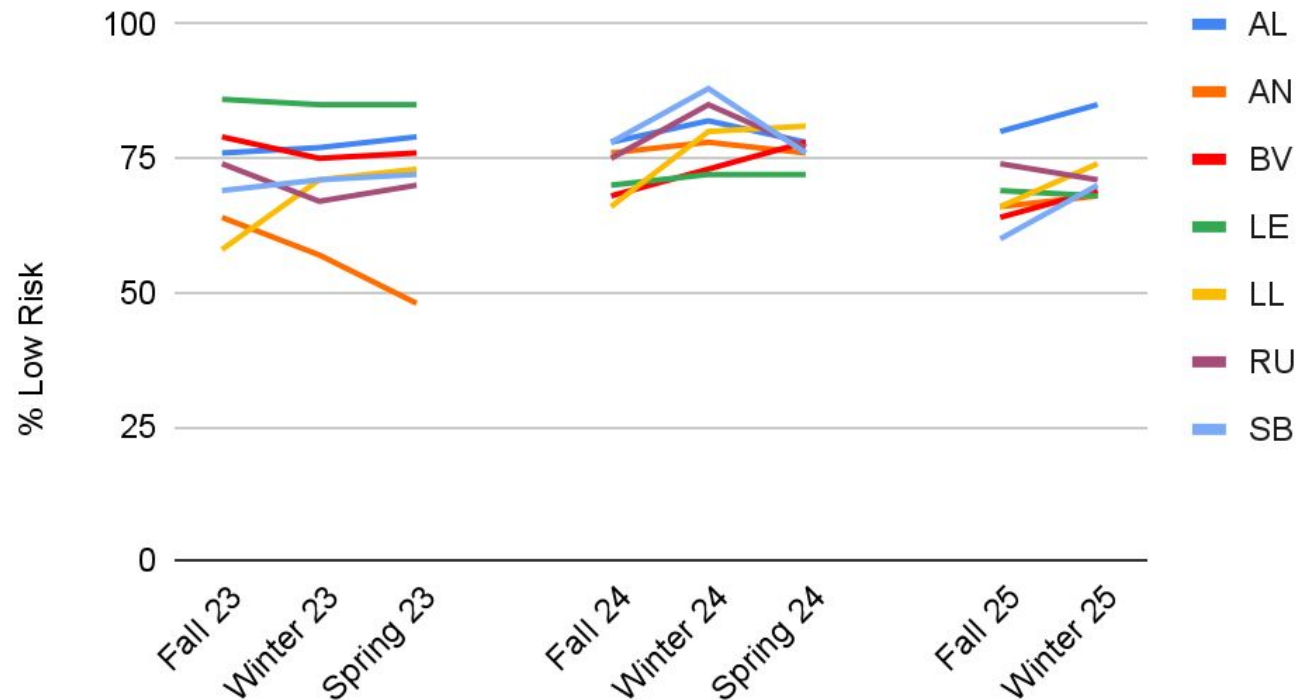
- Growth in grade 4 from 70% to 73% low risk
- Drop in grade 5 from fall to winter (78% to 70%)
 - Winter to winter steady at 70%
- More students in "advanced" from fall to winter



Expect
More.

aMath Grade 4 Highlights

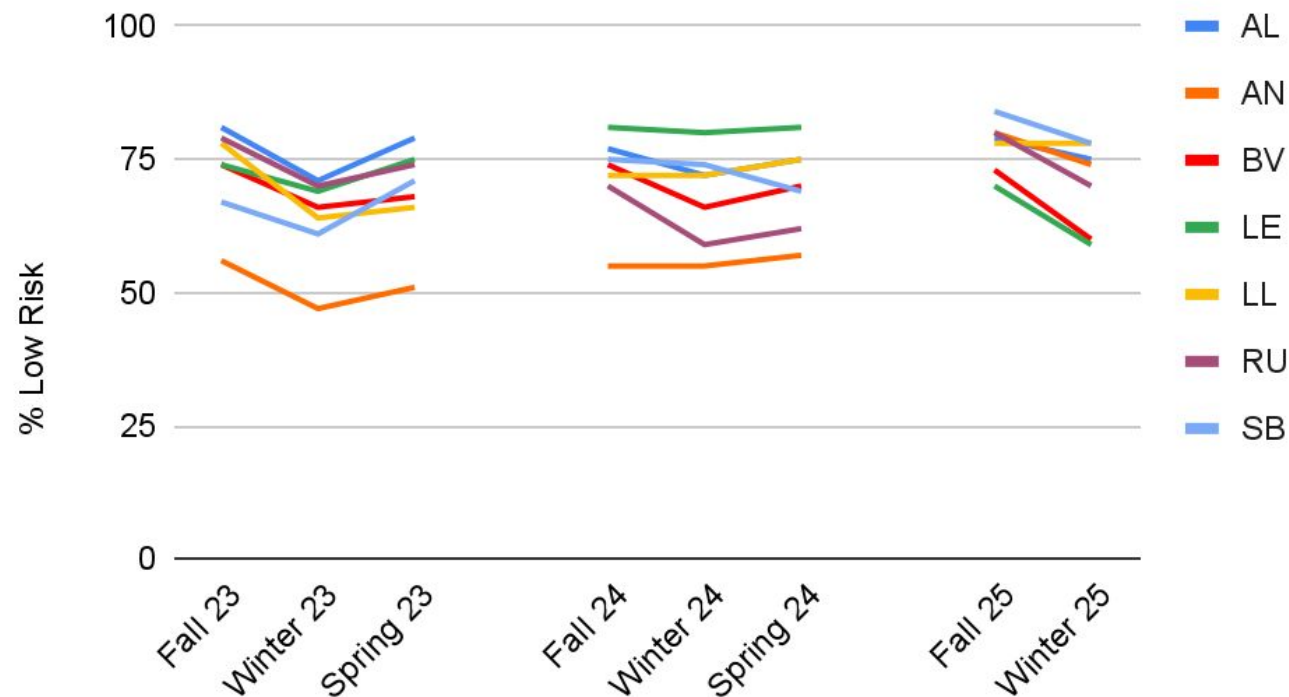
Low Risk % Over Time - aMath G4



Expect
More.

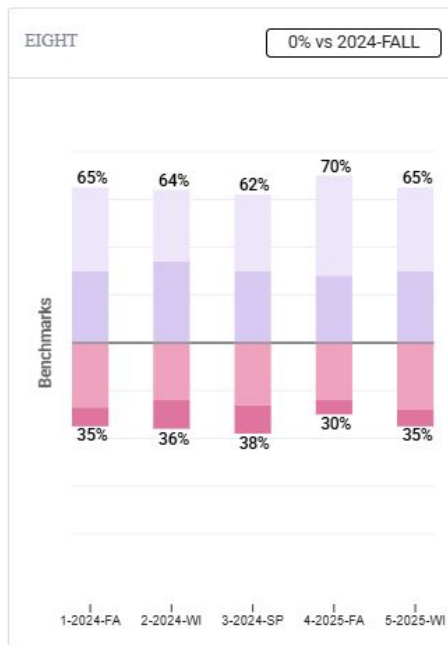
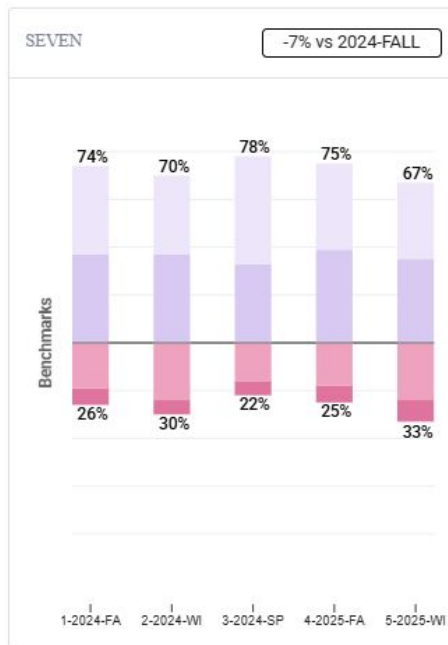
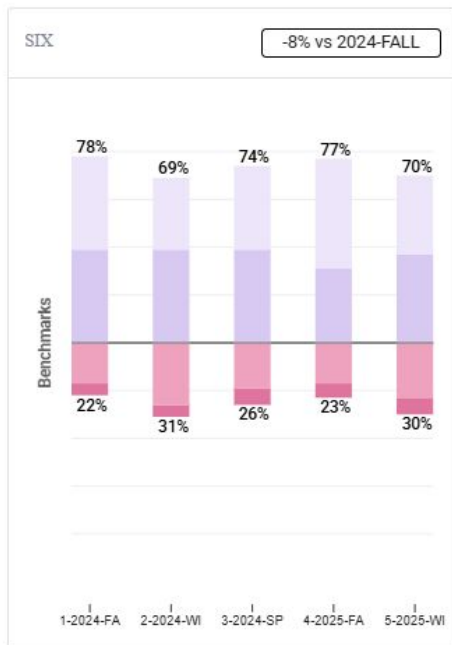
aMath Grade 5 Highlights

Low Risk % Over Time - aMath G5



Expect
More.

aMath - District (Grades 6/7/8)



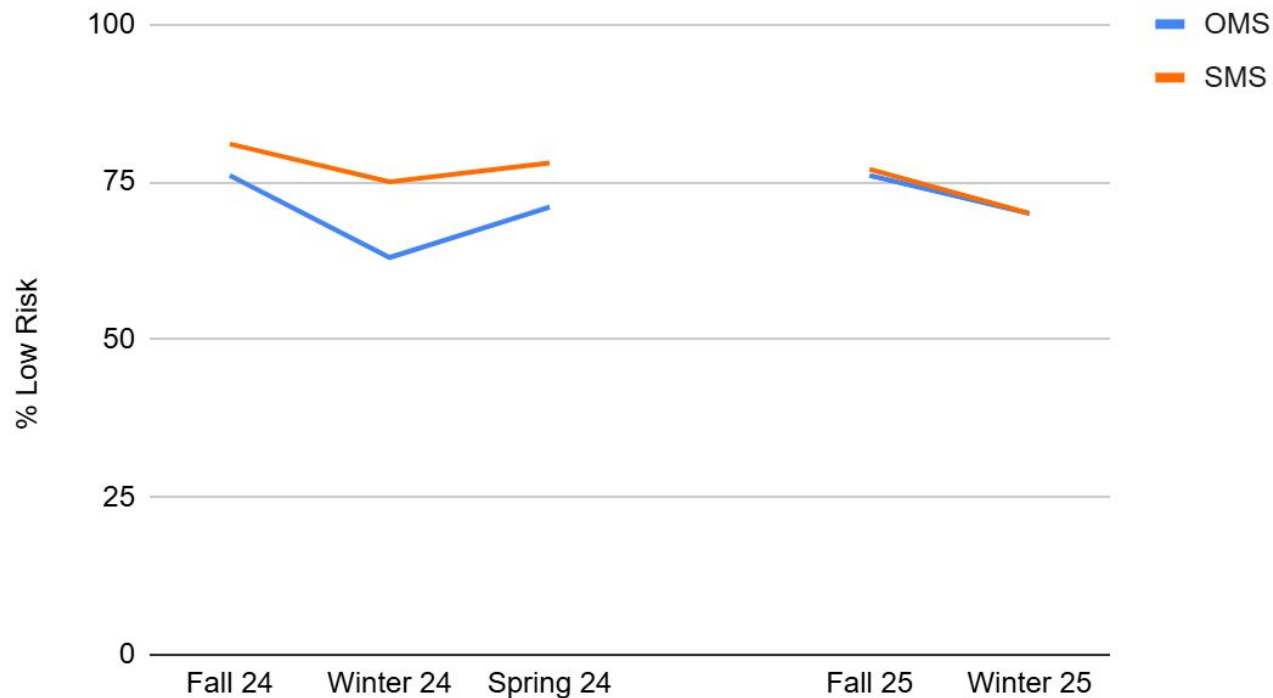
!! High Risk ! Some Risk low risk ★ Advanced



Expect
More.

aMath Grade 6 Highlights

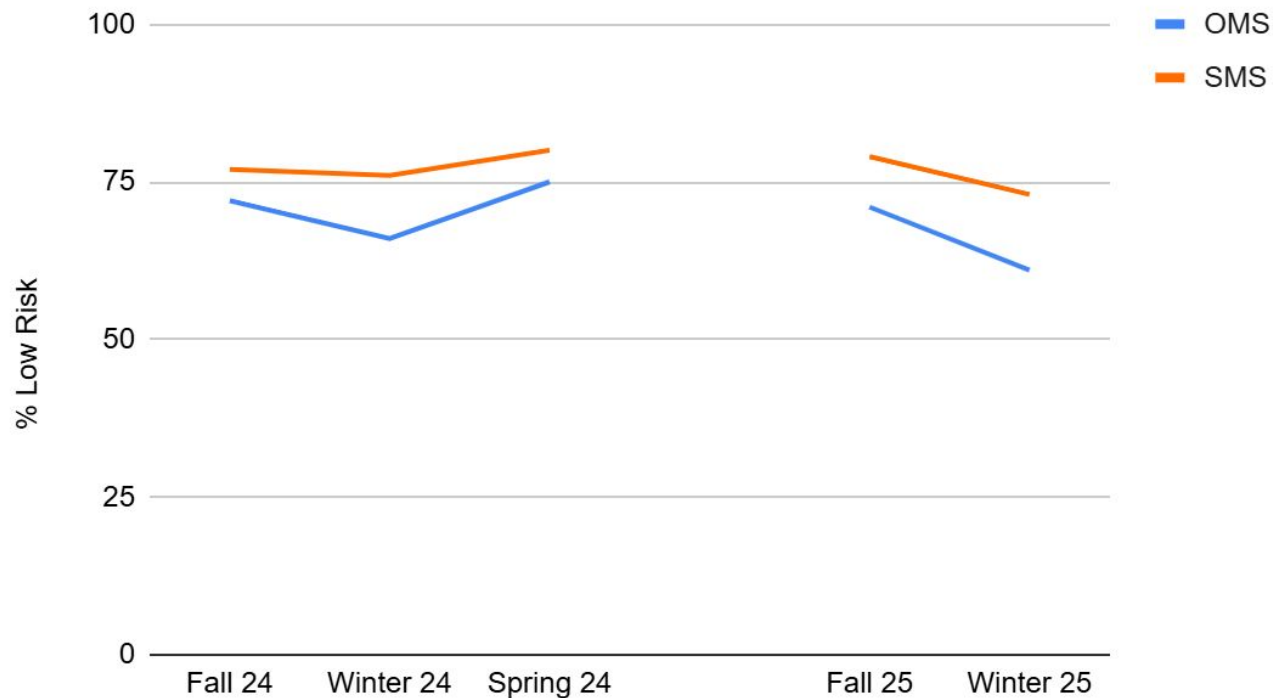
Low Risk % Over Time - aMath G6



Expect
More.

aMath Grade 7 Highlights

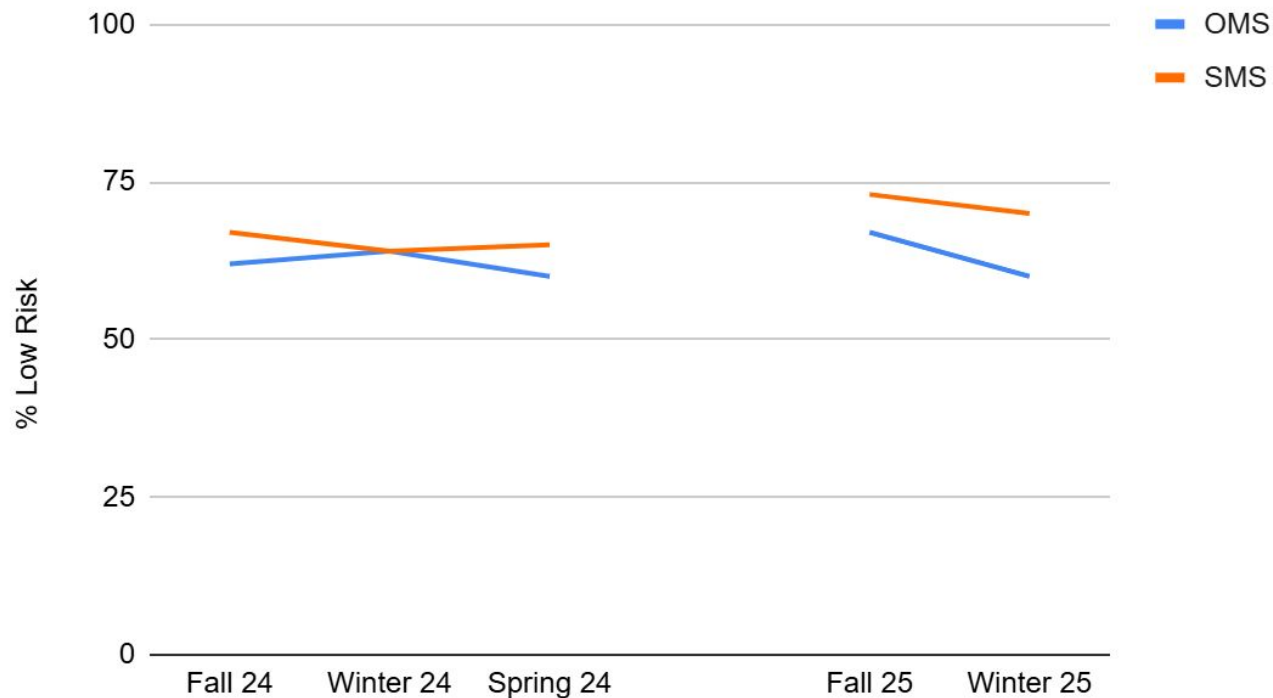
Low Risk % Over Time - aMath G7



Expect
More.

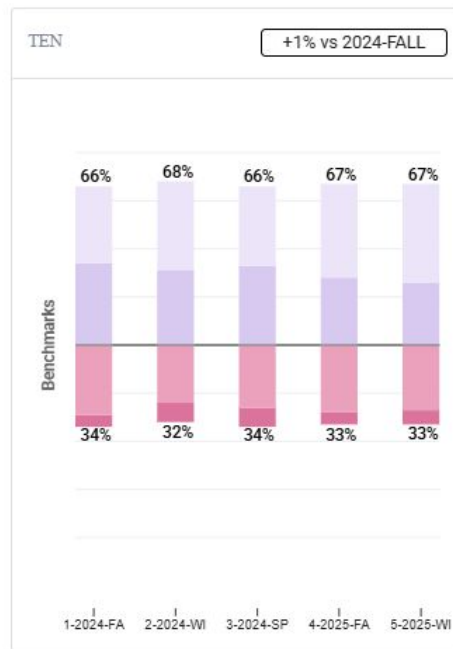
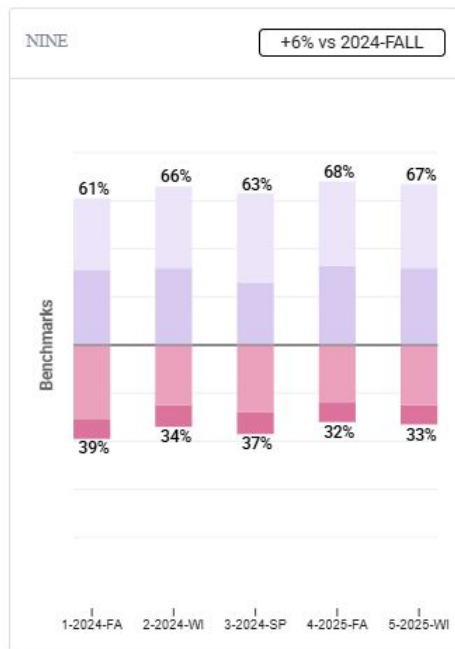
aMath Grade 8 Highlights

Low Risk % Over Time - aMath G8



Expect
More.

aMath - District (Grades 9/10)



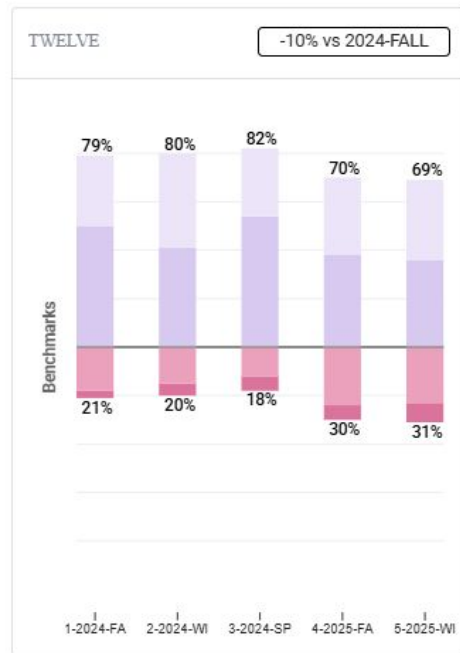
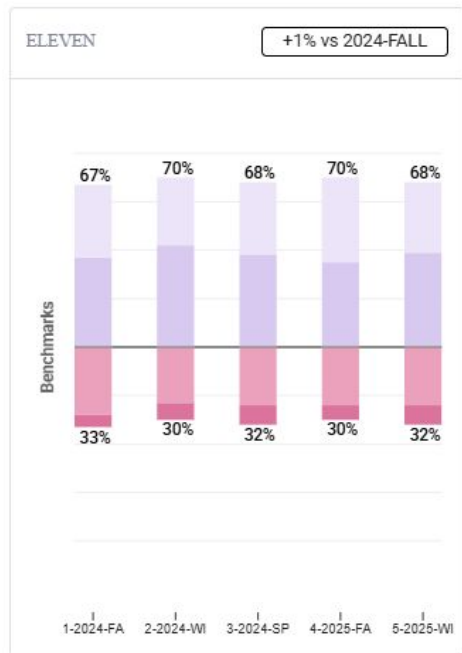
!!! High Risk ! Some Risk low risk ★ Advanced

- 9th and 10th grade holding steady at 67% on track
 - 9th started the year higher
- Lower than aReading at the same grade levels



Expect
More.

aMath - District (Grades 11/12)



- 11th grade stable at 68%
- More students screened in 12th grade this year
 - More representative
 - Sample informed by course-taking

!! High Risk ! Some Risk low risk ★ Advanced



Expect
More.

FastBridge aMath vs. MCA Math (2025)

3rd - 8th, 11th Grade	Does Not Meet	Partially Meets	Meets	Exceeds
highRisk	240	24	4	0
someRisk	389	340	94	0
lowRisk	102	491	824	89
Advanced	5	41	535	781



Expect
More.

FastBridge vs. MCA

FastBridge Percentile Cut	MCA Percent Proficient
40th Percentile+	79%
50th Percentile+	86%
60th Percentile+	93%
65th Percentile+	95%

FastBridge Percentile Band	MCA Percent Proficient	Count
0-10	2%	163
10-20	2%	266
20-30	9%	335
30-40	21%	382
40-50	39%	463
50-60	63%	485
60-70	83%	548
70-80	94%	510
80-90	97%	381
90-100	100%	428



Expect
More.

Math FastBridge Takeaways

- Ability to identify areas of need and areas of growth
 - Down to school, grade, teacher level
- Early math showing more alignment
- Continued push for rigor in math in grades 4 and 5 -- more students at advanced vs. low risk
- Math review cycle has begun (new standards 27-28)
- Secondary shows areas of strength and need across grade levels and schools



Expect
More.



Data Appendix

early Reading Kindergarten Highlights

	Fall 23	Winter 23	Spring 23	Fall 24	Winter 24	Spring 24	Fall 25	Winter 25
AL	76	89	92	63	77	85	63	65
AN	74	52	46	56	71	59	65	63
BV	69	43	46	70	60	41	72	65
LE	74	69	70	65	61	51	73	52
LL	71	61	48	59	74	65	70	68
RU	81	91	91	75	82	85	86	90
SB	81	91	89	75	83	86	74	87



Expect
More.

early Reading Grade 1 Highlights

	Fall 23	Winter 23	Spring 23	Fall 24	Winter 24	Spring 24	Fall 25	Winter 25
AL	63	68	66	63	82	84	56	59
AN	35	47	51	42	59	70	38	53
BV	58	58	63	48	49	46	54	53
LE	48	71	73	42	51	50	52	54
LL	49	57	63	48	58	57	51	52
RU	61	71	80	76	86	90	67	74
SB	57	63	64	58	71	76	67	58



Expect
More.

aReading Grade 2 Highlights

		Winter 23	Spring 23	Fall 24	Winter 24	Spring 24	Fall 25	Winter 25
AL	63	72	79	71	76	76	75	75
AN	55	62	60	60	65	54	71	77
BV	59	69	68	68	74	77	65	65
LE	58	54	61	51	63	67	49	58
LL	55	65	61	56	68	73	62	67
RU	87	82	85	83	83	80	80	79
SB	59	57	67	67	72	72	62	64



Expect
More.

aReading Grade 3 Highlights

		Winter 23	Spring 23	Fall 24	Winter 24	Spring 24	Fall 25	Winter 25
AL	75	72	85	75	79	85	82	71
AN	67	62	67	66	55	68	62	59
BV	72	75	71	74	69	68	79	74
LE	66	61	62	69	64	73	69	59
LL	73	81	75	73	71	67	74	71
RU	81	69	78	80	84	79	84	75
SB	77	72	75	75	71	72	73	69



Expect
More.

aReading Grade 4 Highlights

	Fall 23	Winter 23	Spring 23	Fall 24	Winter 24	Spring 24	Fall 25	Winter 25
AL	78	67	70	86	68	73	81	73
AN	54	34	55	62	52	66	68	54
BV	79	69	72	72	64	65	68	53
LE	82	67	72	66	58	60	70	57
LL	59	53	59	80	73	78	73	62
RU	76	61	74	81	69	75	85	64
SB	77	60	68	84	79	81	72	68



Expect
More.

aReading Grade 5 Highlights

	Fall 23	Winter 23	Spring 23	Fall 24	Winter 24	Spring 24	Fall 25	Winter 25
AL	76	74	77	74	69	75	77	66
AN	62	51	57	54	55	61	68	59
BV	64	65	61	72	62	64	64	58
LE	70	54	61	74	59	67	66	57
LL	74	53	58	63	62	64	81	73
RU	80	69	74	71	65	66	78	70
SB	69	65	66	68	65	65	82	77



Expect
More.

aReading Grade 6 Highlights

	Fall 24	Winter 24	Spring 24	Fall 25	Winter 25
OMS	74	69	69	73	70
SMS	78	73	77	72	71



Expect
More.

aReading Grade 7 Highlights

	Fall 24	Winter 24	Spring 24	Fall 25	Winter 25
OMS	65	65	70	68	65
SMS	71	71	75	77	71



Expect
More.

aReading Grade 8 Highlights

	Fall 24	Winter 24	Spring 24	Fall 25	Winter 25
OMS	61	59	61	75	67
SMS	68	68	70	76	76



Expect
More.

earlyMath Kindergarten Highlights

	Fall 23	Winter 23	Spring 23	Fall 24	Winter 24	Spring 24	Fall 25	Winter 25
AL	94	80	87	85	68	86	88	83
AN	86	81	63	69	71	72	88	69
BV	80	71	70	83	73	68	84	72
LE	80	61	65	82	69	71	81	69
LL	83	65	60	77	69	72	87	61
RU	90	84	88	93	84	82	93	78
SB	82	80	84	87	85	90	90	76



Expect
More.

earlyMath Grade 1 Highlights

	Fall 23	Winter 23	Spring 23	Fall 24	Winter 24	Spring 24	Fall 25	Winter 25
AL	91	89	85	87	95	86	83	85
AN	72	79	77	64	81	91	60	76
BV	76	67	54	65	69	64	76	72
LE	56	81	74	73	73	67	68	66
LL	70	68	65	64	73	61	73	60
RU	77	88	78	89	89	87	77	75
SB	72	77	71	71	75	65	80	88



Expect
More.

aMath Grade 2 Highlights

	Fall 23	Winter 23	Spring 23	Fall 24	Winter 24	Spring 24	Fall 25	Winter 25
AL	73	85	82	90	83	85	78	83
AN	72	76	64	75	78	71	73	73
BV	59	63	66	64	75	77	68	73
LE	63	70	63	63	68	71	57	61
LL	58	68	74	66	74	75	67	76
RU	82	90	88	85	88	88	81	89
SB	59	64	66	70	69	65	70	75



Expect
More.

aMath Grade 3 Highlights

	Fall 23	Winter 23	Spring 23	Fall 24	Winter 24	Spring 24	Fall 25	Winter 25
AL	75	73	84	82	85	85	93	83
AN	82	77	76	72	66	61	68	67
BV	79	76	74	74	72	64	80	75
LE	75	73	68	70	73	71	76	71
LL	80	74	67	78	68	70	76	73
RU	87	86	78	91	83	84	86	77
SB	80	86	73	75	71	68	76	75



Expect
More.

aMath Grade 4 Highlights

	Fall 23	Winter 23	Spring 23	Fall 24	Winter 24	Spring 24	Fall 25	Winter 25
AL	76	77	79	78	82	78	80	85
AN	64	57	48	76	78	76	66	68
BV	79	75	76	68	73	78	64	69
LE	86	85	85	70	72	72	69	68
LL	58	71	73	66	80	81	66	74
RU	74	67	70	75	85	77	74	71
SB	69	71	72	78	88	76	60	70



Expect
More.

aMath Grade 5 Highlights

	Fall 23	Winter 23	Spring 23	Fall 24	Winter 24	Spring 24	Fall 25	Winter 25
AL	81	71	79	77	72	75	79	75
AN	56	47	51	55	55	57	80	74
BV	74	66	68	74	66	70	73	60
LE	74	69	75	81	80	81	70	59
LL	78	64	66	72	72	75	78	78
RU	79	70	74	70	59	62	80	70
SB	67	61	71	75	74	69	84	78



Expect
More.

aMath Grade 6 Highlights

	Fall 24	Winter 24	Spring 24	Fall 25	Winter 25
OMS	76	63	71	76	70
SMS	81	75	78	77	70



Expect
More.

aMath Grade 7 Highlights

	Fall 24	Winter 24	Spring 24	Fall 25	Winter 25
OMS	72	66	75	71	61
SMS	77	76	80	79	73



Expect
More.

aMath Grade 8 Highlights

	Fall 24	Winter 24	Spring 24	Fall 25	Winter 25
OMS	62	64	60	67	60
SMS	67	64	65	73	70



Expect
More.



Questions