



EAST AURORA
SCHOOL DISTRICT 131

Security Projects of 2025

Jeff Wiencek- Security Manager

With a very appreciated partnership with Building/Grounds and IT

Initial Vulnerability Study

At the beginning of the school year, I personally met with administrative leaders of every single school to observe current conditions as well as interview staff. Security concerns and safety requests were taken.

The vulnerability study with suggested remediation plans was created and prioritized. These continue to be developed and fulfilled.

ICE monitoring and Response to Concerns



Supporting schools, community along in cooperation with APD, to minimize angst within schools where incidents have occurred or been in proximity.



Improved Procedure (Students Under the influence)

High School Safety and Security meeting, staff expressed some inconsistency and confusion regarding students who may be under the influence.

Armed with this info, we worked to create an updated procedure. This procedure has been shared with building administrators and district medical staff.

Development & Distribution of Trespass Signage

Regional Office of Education meetings have confirmed an uptick in harassing first amendment auditors who enter public building and refuse to leave. The district has worked with others to proactively put out additional signage to deter such incidents.

This also increases enforceability of trespassing laws for unwelcome, unvetted persons in the district properties.

**NO
TRESPASSING
PROHIBIDO EL PASO**

The area past this point is **NOT open to the public** and is for employees only. Members of the public are **NOT permitted to enter** unless authorized by an employee of East Aurora School District 131.

El área más allá de este punto **NO está abierta al público** y es solo para empleados. **NO se permite** la entrada al público a menos que lo autorice un empleado de East Aurora School District 131.



District Food Delivery Practices

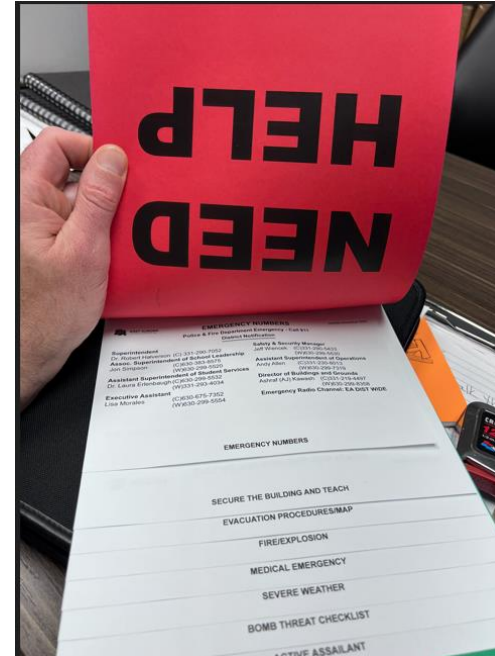
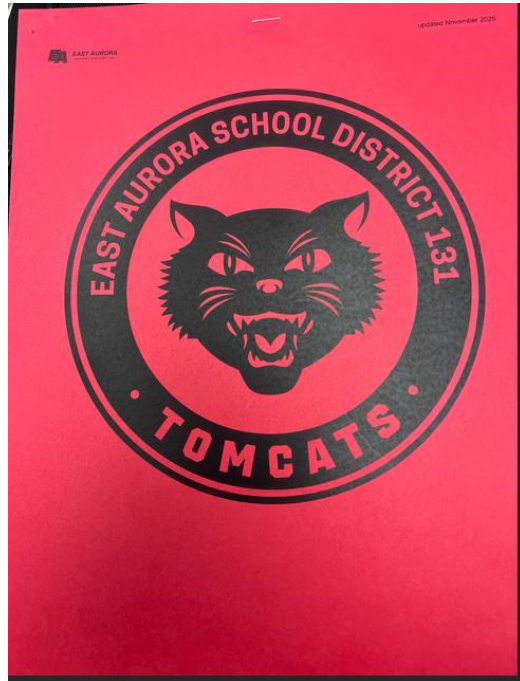
The district is looking at alter its food delivery protocol. While convenient (and tasty) for staff, allowing delivery persons to drop off food in schools exposes our schools, staff and students to unvetted persons.

Allowing staff to leave deliveries outside in coolers/containers after being notified by door intercom, increases safety for our schools, as well as encouraging healthy options.

A small change in protocol can create a big change in safety.



Creation of Updated Emergency Flip Charts



EAHS Safer Searching Location

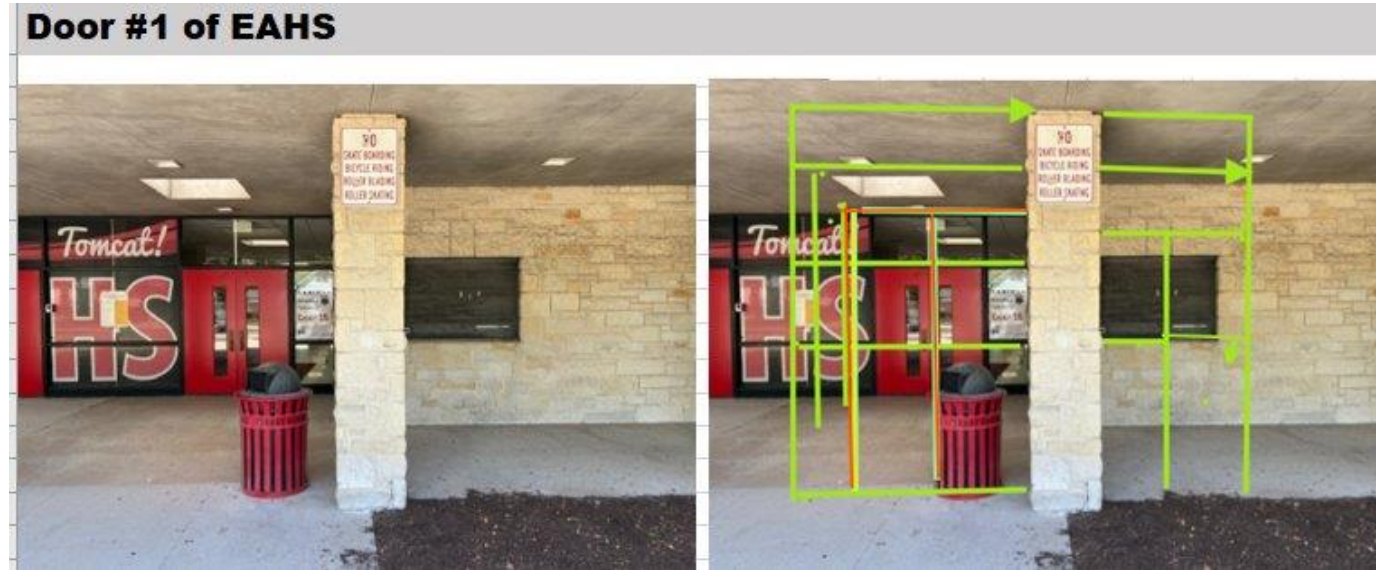
We have numerous students who need to be searched daily before entering school. It was agreed that the previous practice of searching these student inside the open school was counterintuitive.

Assistant Principal Francisco De Los Santos proposed a temporary safety enhancement of the existing Safety vestibule at Door #45 (pictured), which has been employed this year.



Planning of Safety Vestibule for Door # 1

The district is developing plans for a safety vestibule at Door #1.



Providing Secure Access to Building Interiors



ECC already has swipe entry on exterior doors
And swipe access only at interior vestibule doors

The district is working to provide this same swipe security access on the office doors that enter the children area of the school.

Doing so will prevent upset persons from entering the children's area of the school without permission.

Door Repair at Bardwell



Due to years of heating and cooling of wooden doors, there were many that could not closed by teachers in this 96-year-old school.

Multiple work orders were created, and our skilled building teams rectified these issues for the safety of staff and students.

Creating parking lot enforcement capability



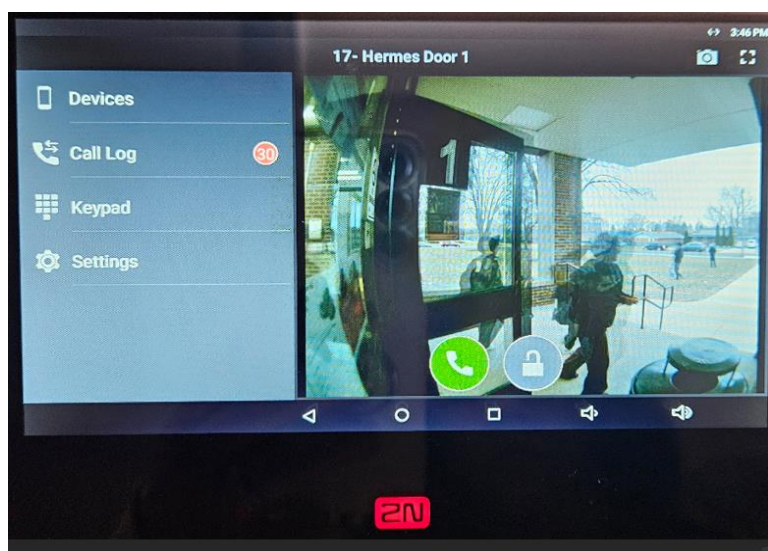
Bardwell staff had concerns, due people hanging out in cars in this staff lot as well as taking up the limited parking places, the district will be posting Staff Only signs. In addition signs about their vehicle potentially being towed will be installed.

Entry Security Camera upgrades Allen School



The District has replaced cameras and provided access upon multiple staff computers for confidently vet visitors before granting entry into the school.

Door Entry cameras at Hermes



The district replaced these cameras with new technology, allowing staff to more accurately view and vet visitors to the school .

More robust Behavioral Threat Assessment Program

A systematic process used to identify, evaluate, and manage individuals who may pose a threat of violence to themselves or others.

This proactive approach involves multidisciplinary teams in settings like schools to assess concerning behaviors and implement a management plan to prevent harm before it happens.

THE CSTAG MODEL: 5 STEPS



REPORT
& INTAKE



EVALUATE
THREAT

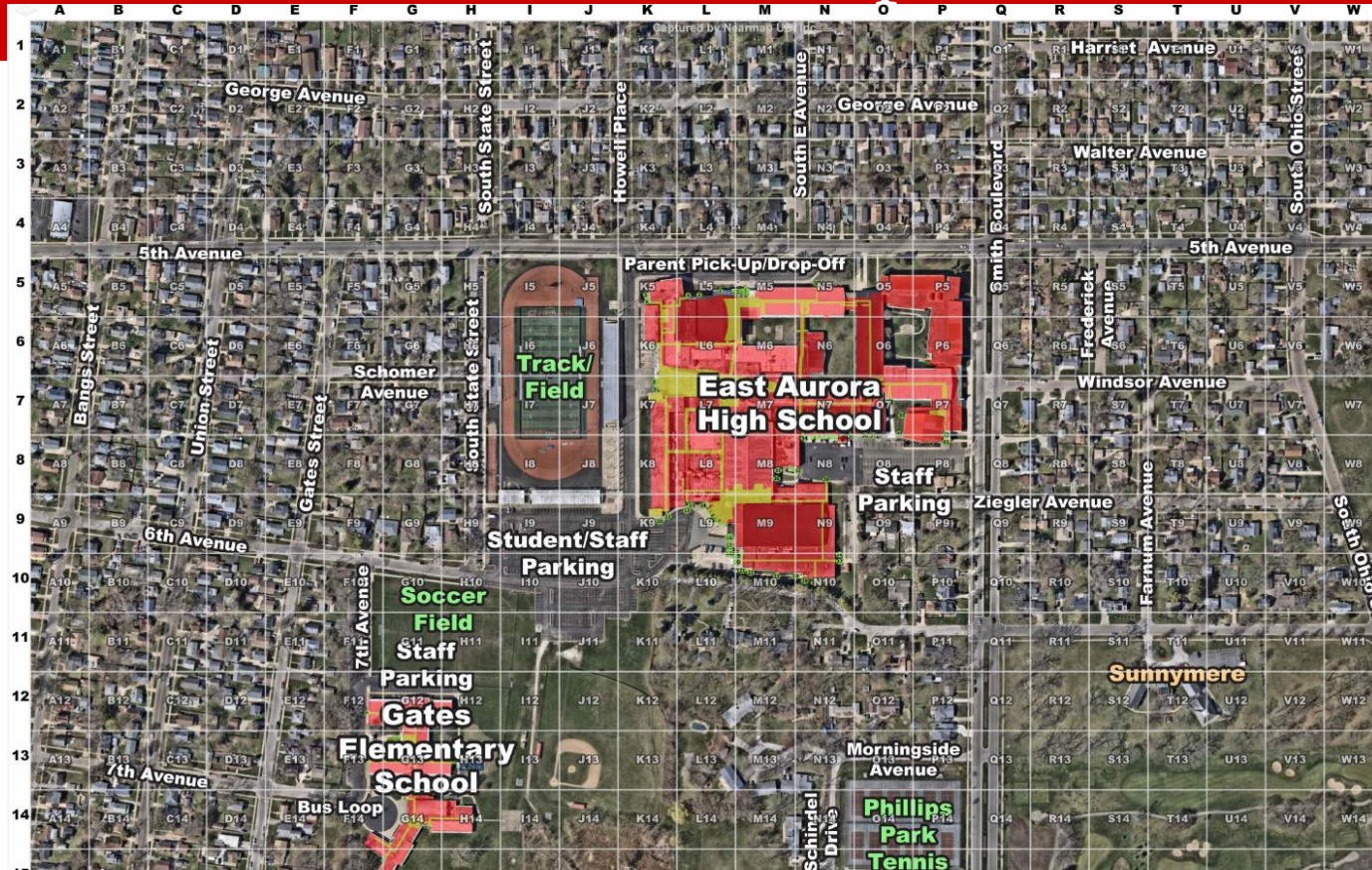


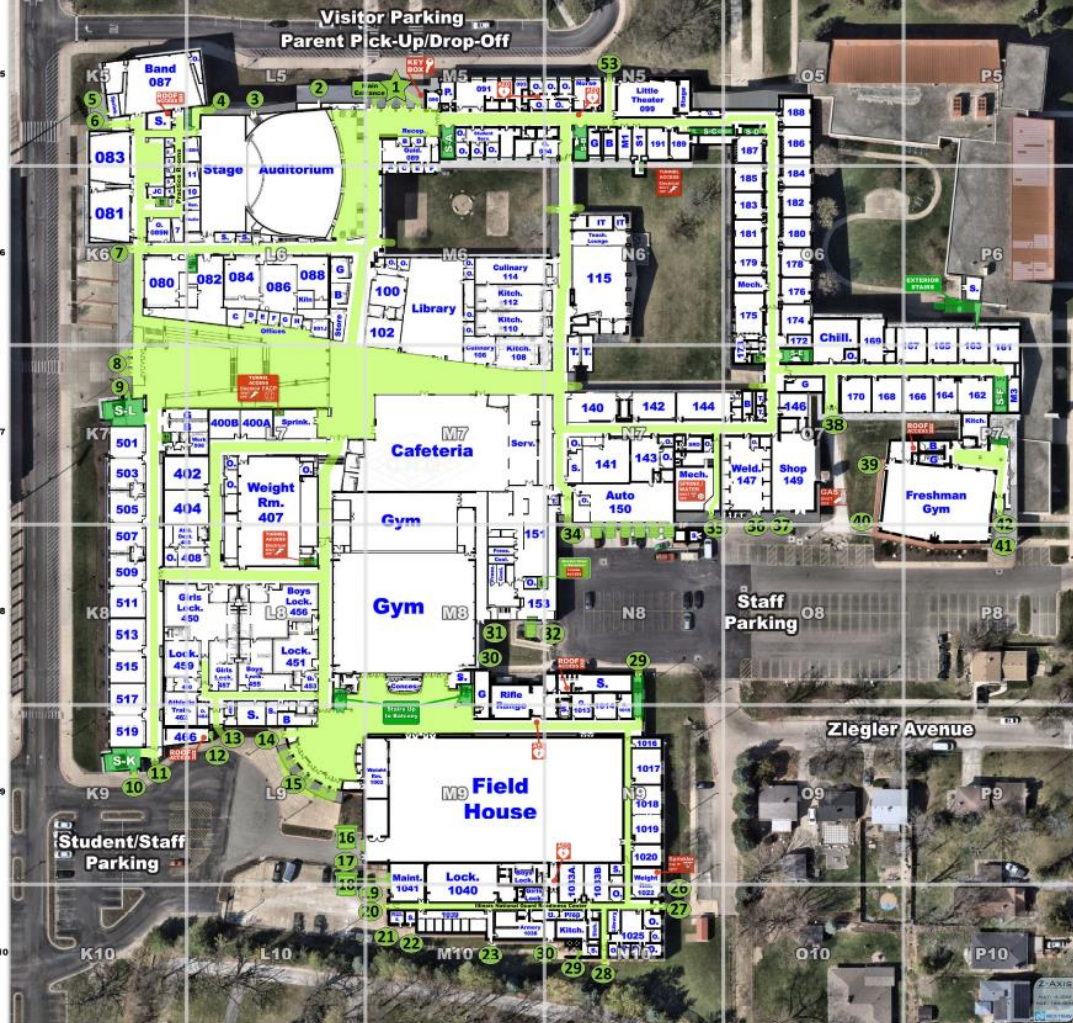
GATHER
INFORMATION



INTERVENTION
PLAN

Integration of CRG School maps of D131 Schools





Detailed maps are now immediately available to 1st responders: APD, MPD, MFD and AFD.

Accurate maps of all schools as well as 1st Responder real time tracking throughout the schools to increase coordination and decrease the time required to end a traumatic incident.

Emergency Radio Testing



Pursuant to a 2021 grant acquired by Dr Halverson in his past position at D129, radios were acquired for D129 and D131 schools. D131 has now begun monthly functionality testing with D129.

These emergency radios was deemed important to share real time information with other city partners, subsequent to the Pratt mass shooting when it was realized that our districts share some students and buses,

Walkie Talkie Radio Program Improvements

More responsive and knowledgeable radio vender, Baycom.

Development of new radio frequency plan to improve ease of interoperability as well as increase speed of new radio upgrade and distribution.

| Digital/Secondary | |
|-------------------|------------------|
| 1 | EAHS -Admin |
| 2 | EAHS -Security |
| 3 | EAHS-Grounds |
| 4 | EAHS- Athletics |
| 5 | EAHS-Support |
| 6 | Cowherd-Admin |
| 7 | Cowherd-Security |
| 8 | Cowherd -Social |
| 9 | Waldo-Admin |
| 10 | Waldo -Security |
| 11 | Waldo-Social |
| 12 | Simmons-Admin |
| 13 | Simmons-Security |
| 14 | Simons-Social |
| 15 | EAEC |
| 16 | Dist 131 |

| Analog /Elementary Sharing Freq | | |
|---------------------------------|-----------|---------|
| 1 | Steam | Allen |
| 2 | REC | |
| 3 | ECC | |
| 4 | Bardwell | Johnson |
| 5 | Beaupre | |
| 6 | Brady | |
| 7 | Dieterich | |
| 8 | Gates | |
| 9 | O'Donnel | |
| 10 | Oak Park | |
| 11 | Rollins | |
| 12 | Magnet | |
| 13 | REC | |
| 14 | Krug | GCC |
| 15 | Hermes | |
| 16 | Emergency | |

Additional video coverage for Simmons

The district is working with staff and IT to minimize a long-standing surveillance blind spot in the outside the most problematic bathrooms and other areas which have been the source of vaping, fights, etc.



Enhancing Safety at EAHS Truancy Office

Speaking with staff at the Truancy Office of EAHS, it was further confirmed that staff had safety concerns with angry parents, intoxicated parents or both. Despite having a safety vestibule inside Door 45, staff had to open the door to obtain signatures. These hostile parents have been able to pull the propped door open while speaking with staff, blocking the door from being shut.

The district has partnered with Morse Glass for the construction of a reinforced tempered glass with a speaking port and document pass thru, preventing access to Truancy staff. This enhancement had to be specially ordered and is planned to be installed by return after Christmas break.



Risk of Harm Procedure Review

The district is collaboratively working to change the flow protocol involving the handling of persons deemed to be at risk of harm (ROH) in our schools. Appreciating that all ROH are different (suicidal, self-harm and homicidal), subjects deemed to have homicidal ideations or otherwise possessing a greater risk to the public, the district is working to create a system where law enforcement (SROs, Police Crisis Response Team and Security), can be looped into the evaluation process much earlier to further enhance safety within the school as well as for our evaluating staff. It is the hope that with this earlier multidisciplinary response, we can enhance safety for all, including the student at risk, while developing the best solution(s) for success.

Questions or Comments?

