



NORTH SLOPE BOROUGH SCHOOL DISTRICT

M E M O R A N D U M

TO: Robyn Burke, President
Members of the School Board

THROUGH: David Vadiveloo, Superintendent *Dsv*

THROUGH: Caitlin Santos, Director of Curriculum & Instruction *CS*

FROM: Ranel Gandia, Student Records Manager *RG*
Ian Acuna, Data Manager *IA*

DATE: April 1, 2024

SUBJECT: Enrollment and Attendance Report

Memo No. SB24-135
(Information Item)

NSBSD Strategic Plan Goal:

1.2 Engaged & Empowered by Learning - Attendance: Cultivate an environment where attendance is valued, encouraged, and supported and implement a culturally integrated calendar that is aligned across the district to increase attendance and expand options for students.

Issue Summary:

Research consistently shows that student attendance matters. Students with higher attendance rates are more likely to meet state academic standards, and graduate on time at higher rates. Educational outcomes reflect attendance even in the earliest grades, and then those gaps continue to widen into secondary (grades 6-12). While some students are more adversely affected by absences than others, it is clear that the effects of absences accumulate over time; attendance matters and every day counts. This is not to say that perfect attendance should be the goal ‘no matter what.’ We understand that students may miss school for a variety of reasons, and do not want to encourage sick children to attend when it is not appropriate to do so. In light of these factors, and the overwhelming amount of research, the district has set the attendance goal for all students at 80%.

| K-12 Enrollment by Site | | | |
|--------------------------------|------------------------------|--------------------------|----------------------------------|
| School | Current Student Count | Attendance Report | 22-23 March Student Count |
| Nunamiut School | 90 | 65.29% (↓ 18.12%) | 97 |
| Tikiġaq School | 216 | 68.57% (↓ 3.50%) | 245 |
| Nuiqsut Trapper School | 139 | 64.68% (↓ 6.82%) | 144 |
| Kali School | 80 | 88.59% (↑ 1.32%) | 71 |
| Aġak School | 130 | 68.71% (↓ 6.05%) | 153 |
| Harold Kaveolook School | 55 | 81.77% (↓ 9.96%) | 54 |
| Meade River School | 81 | 67.23% (↓ 12.74%) | 70 |
| Barrow High School | 256 | 67.74% (↓ 5.40%) | 264 |
| Eben Hopson Middle School | 208 | 75.34% (↓ 2.83%) | 232 |
| Fred Ipalook Elementary School | 423 | 77.61% (↓ 4.50%) | 442 |
| KIITA Learning Community | 42 | 69.62% (↑ 3.85%) | 40 |
| Total | 1720 | 72.41% (↓ 4.50%) | 1812 |

| K3 & K4 Enrollment by Site | | | |
|---------------------------------------|------------------------------|--------------------------|----------------------------------|
| School | Current Student Count | Attendance Report | 22-23 March Student Count |
| Nunamiut School | 13 | 49.50% (↓ 26.32%) | 14 |
| Tikiqaaq School | 14 | 57.21% (↑ 1.21%) | 26 |
| Nuiqsut Trapper School | 14 | 46.46% (↓ 16.90%) | 20 |
| Kali School | 10 | 69.05% (↓ 15.39%) | 14 |
| Ałak School | 10 | 47.62% (↓ 11.69%) | 9 |
| Harold Kaveolook School | 8 | 83.93% (↑ 3.22%) | 4 |
| Meade River School | 8 | 61.90% (↑ 20.23%) | 9 |
| Fred Ipalook Elementary School | 101 | 61.38% (↓ 0.22%) | 89 |
| Total | 178 | 59.73% (↓ 3.52%) | 185 |

| Night School Enrollment | | |
|--------------------------------|------------------------------|----------------------------------|
| School | Current Student Count | 22-23 March Student Count |
| KIITA Learning Community | 15 | 16 |

The symbols (↑ and ↓) next to the data indicates if there was an increase or decrease since the last monthly report, the percentage next to the symbol indicates the amount it has increased or decreased by since the last monthly report.

Below, you will find two new charts. The first chart is a year over year enrollment summary starting with 2020. The second chart is showing year over year attendance throughout the school year. We provide this information so that trends can be seen, however please note that due to COVID related attendance policies, as well as the way that attendance was previously calculated, the attendance rate for the 2021-2022 school year is inflated. During that time, when a school was in “Red” status, or operating remotely, all attendance was “present.” During that school year, we also counted a student present daily, rather than period by period in Middle School and High School. This data is helpful however in order to see peaks and valleys by month.



Enrollment Overview

North Slope Borough School District

Compare by Year

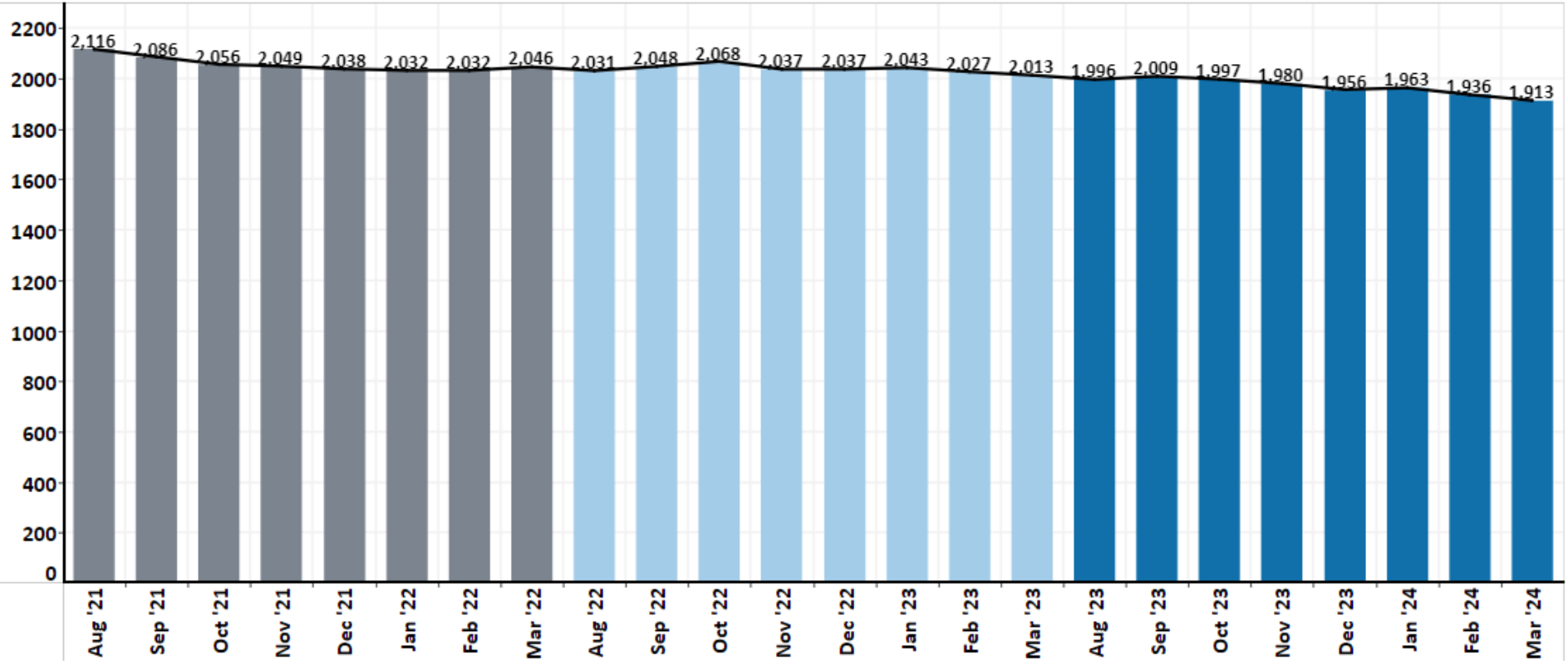
Year(s):
(Multiple values)

Month(s):
(Multiple values)

School:
NSBSD

Grade:
All Grades

Year(s): 2023-2024, 2022-2023, 2021-2022 | Month(s): Aug, Sep, Oct and 5 more | School: NSBSD | Grade: All Grades



■ 2021-2022
 ■ 2022-2023
 ■ 2023-2024

| Month | 2021-2022 | 2022-2023 | 2023-2024 |
|-------|-----------|--------------|---------------|
| Aug | 2,116 | 2,031 (↓ 85) | 1,996 (↓ 35) |
| Sep | 2,086 | 2,048 (↓ 38) | 2,009 (↓ 39) |
| Oct | 2,056 | 2,068 (↑ 12) | 1,997 (↓ 71) |
| Nov | 2,049 | 2,037 (↓ 12) | 1,980 (↓ 57) |
| Dec | 2,038 | 2,037 (↓ 1) | 1,956 (↓ 81) |
| Jan | 2,032 | 2,043 (↑ 11) | 1,963 (↓ 80) |
| Feb | 2,032 | 2,027 (↓ 5) | 1,936 (↓ 91) |
| Mar | 2,046 | 2,013 (↓ 33) | 1,913 (↓ 100) |



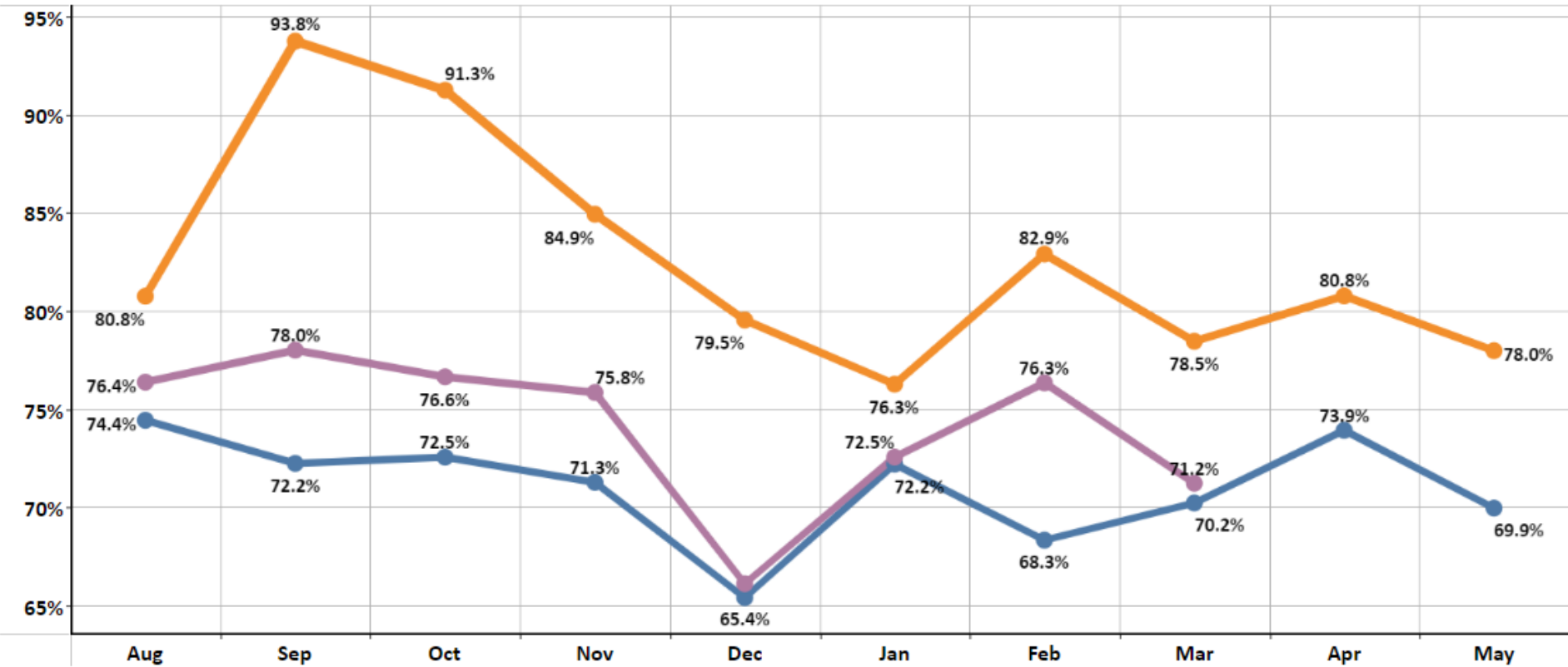
Attendance Overview

North Slope Borough School District



Compare by Year
 Year(s):
 Month(s):
 School:
 Grade:

Year(s): 2023-2024, 2022-2023, 2021-2022 | Month(s): All | School: NSBSD | Grade: All Students (Pre-K - 12)



■ 2023-2024
 ■ 2022-2023
 ■ 2021-2022

| Month | 2021-2022 | 2022-2023 | 2023-2024 |
|-------|-----------|-------------------|------------------|
| Aug | 80.75% | 74.43% (↓ 6.33%) | 76.37% (↑ 1.94%) |
| Sep | 93.76% | 72.22% (↓ 21.54%) | 78.00% (↑ 5.78%) |
| Oct | 91.26% | 72.54% (↓ 18.72%) | 76.64% (↑ 4.10%) |
| Nov | 84.93% | 71.26% (↓ 13.68%) | 75.84% (↑ 4.58%) |
| Dec | 79.54% | 65.38% (↓ 14.16%) | 66.09% (↑ 0.71%) |
| Jan | 76.26% | 72.19% (↓ 4.08%) | 72.54% (↑ 0.36%) |
| Feb | 82.90% | 68.31% (↓ 14.59%) | 76.34% (↑ 8.03%) |
| Mar | 78.45% | 70.21% (↓ 8.25%) | 71.21% (↑ 1.01%) |
| Apr | 80.77% | 73.91% (↓ 6.85%) | |
| May | 77.97% | 69.94% (↓ 8.03%) | |

Signature: DSVadiveloo
DSVadiveloo (Apr 20, 2024 11:58 AKDT)

Email: david.vadiveloo@nsbsd.org

Signature: Caitlin Santos
Caitlin Santos (Apr 10, 2024 08:32 AKDT)

Email: Caitlin.Santos@nsbsd.org