









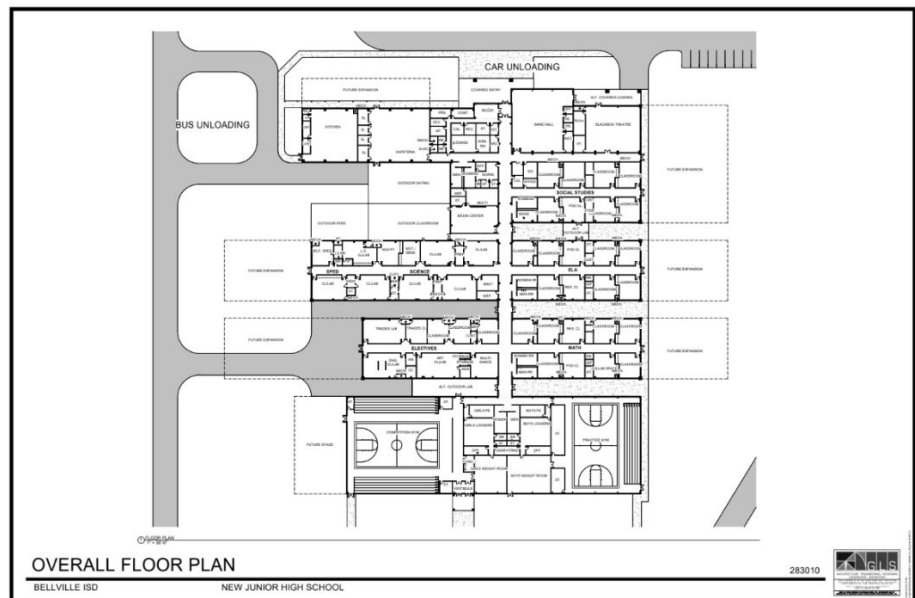


# BISD BOND STEERING TIMELINE | Updated April 2024

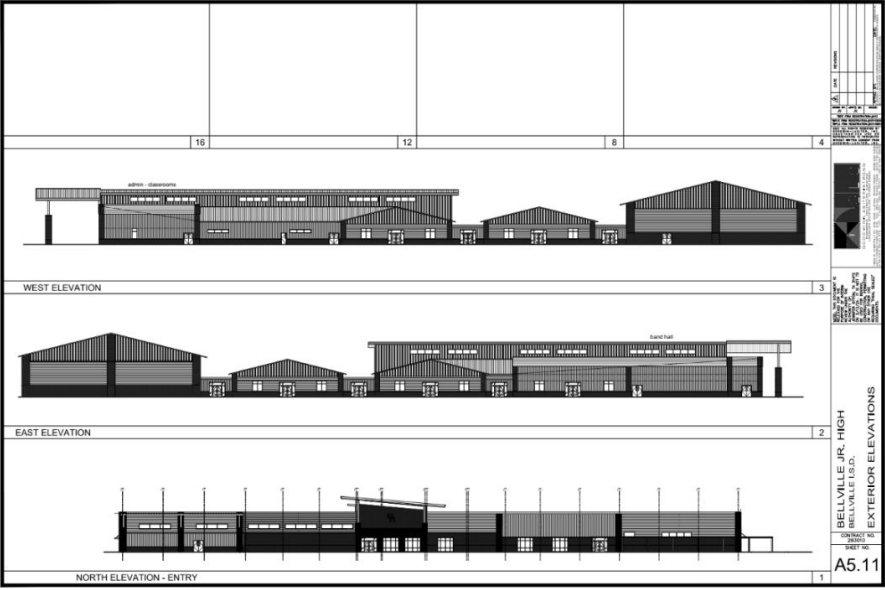
THE TIMELINE BELOW IS FLEXIBLE AND HIGHLY DEPENDENT UPON WEATHER CONDITIONS & AVAILABILITY OF LABOR & SUPPLIES.

 <b>Winter 2023</b>	 <b>Spring 2024</b>	 <b>Summer 2024</b>	 <b>Fall 2024</b>	 <b>Spring 2025</b>	 <b>Summer 2025</b>	 <b>WINTER 2025</b>	 <b>Spring 2026</b>	 <b>Summer 2026</b>	 <b>Fall 2026</b>
<ul style="list-style-type: none"> <li>✓ Background Work: Geotech, Finances, Etc.</li> <li>✓ Engage LRFP Committee</li> <li>✓ Engage Design Committees:                             <ul style="list-style-type: none"> <li>✓ BJHS</li> <li>□ Transportation</li> <li>✓ Food Service</li> <li>✓ BJHS Site Visits</li> </ul> </li> </ul>	<ul style="list-style-type: none"> <li>✓ Engage West End Design Committee</li> <li>✓ Finalize Design: West End &amp; BJHS</li> </ul>	<ul style="list-style-type: none"> <li>□ OBP Roof Replacement</li> <li>□ OBP HVAC Replacement</li> <li>□ WE Renovations</li> <li>□ Break Ground on New BJHS Campus</li> <li>□ BHS HVAC Replacements</li> </ul>	<ul style="list-style-type: none"> <li>□ OBP/WE/BHS Furniture Refresh Selections</li> <li>□ Convene OBI Design Team</li> <li>□ Finalize OBI Refresh Design</li> <li>□ Construction on New BJHS</li> <li>□ Create OBI Commemorative Committee</li> </ul>	<ul style="list-style-type: none"> <li>□ OBP/WE/BHS Furniture Purchases</li> <li>□ Construction on New BJHS</li> <li>□ Convene OBP Design Team</li> <li>□ Finalize OBP Interior Remodel Plans</li> </ul>	<ul style="list-style-type: none"> <li>□ WE/BHS Furniture Installation</li> <li>□ WE Additions</li> <li>□ BJHS/OBI/BHS Parking &amp; Traffic Flow Configuration</li> <li>□ Construction on New BJHS</li> <li>□ Road/parking improvements at BHS</li> </ul>	<ul style="list-style-type: none"> <li>□ Complete Construction and Open Classes in New BJHS</li> </ul>	<ul style="list-style-type: none"> <li>□ Remodel Existing BJHS for OBI</li> </ul>	<ul style="list-style-type: none"> <li>□ Transition OBI (3rd-5th) to Existing BJHS</li> <li>□ Demolition of OBI</li> <li>□ Disposal of Portable Buildings from OBP/OBI</li> <li>□ Parking &amp; Traffic Flow Configuration at OBP</li> <li>□ OBP Interior Remodel</li> </ul>	<ul style="list-style-type: none"> <li>□ All Work Complete!</li> <li>□ OBI Opens at existing BJHS with 3rd Grade</li> </ul>

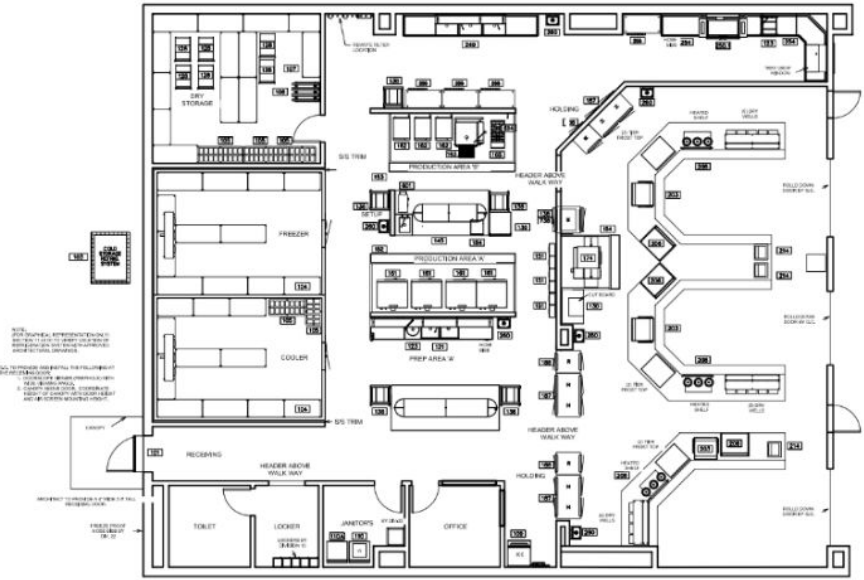
## BJHS Footprint



# BJHS Exterior



# BJHS Cafeteria Design



# WE CORRIDOR & CAFETERIA

