

ENGLISH LANGUAGE LEARNERS PROGRAMMING

Program Review

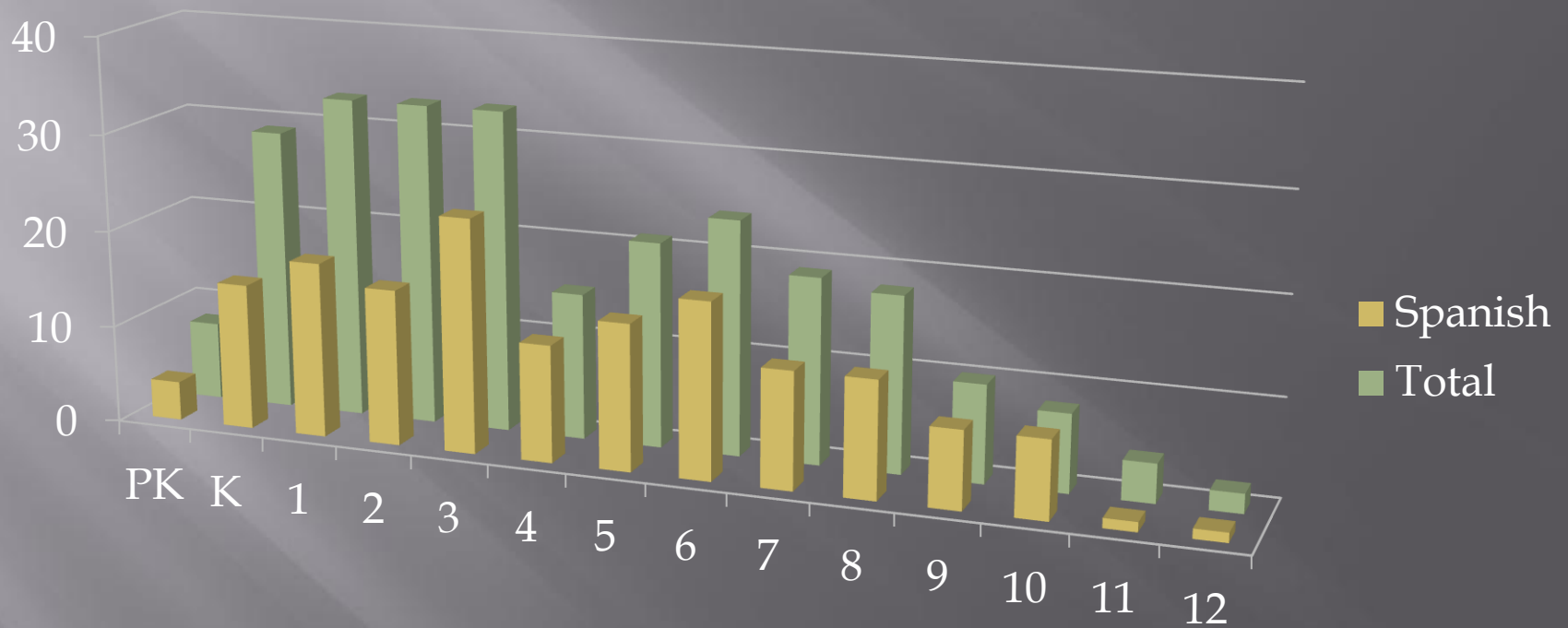
Steps Taken

- ▣ Hired Vazquez Educational Consulting to evaluate our program and make sure we were in compliance
 - Met with Harlem teachers and administrators for input
 - Created a Strategic Program Report
 - ▣ Comprehensive Bilingual/ELL Program
 - ▣ Steps to ensure compliance

Current Programming

- ▣ 5 Elementary ELL Teachers
 - Parker
 - Loves Park
 - Maple
 - Marquette
 - Olson
 - Windsor
- ▣ 1 Middle School Bilingual/ELL Teacher
- ▣ 1 High School ELL Teacher
- ▣ 4 Paraeducator Positions – Elementary Buildings

ELL Student Population



	PK	K	1	2	3	4	5	6	7	8	9	10	11	12	T
SPANISH	4	15	18	16	24	12	15	18	12	12	8	8	1	1	164
TOTAL	8	29	33	33	33	15	21	24	19	18	10	8	4	2	257

Types of Programs

- ▣ Transitional Bilingual Education – 20 or more students who speak the same language in the same school.
 - Part of the core instruction must be in native language.
 - ▣ Rock Cut
 - ▣ Harlem Middle School
 - Must teach Spanish Language Arts next year.
- ▣ Transitional Program Instruction – Less than 20 students who speak the same language in one school.
 - Program at all other buildings
 - Parker is close to requiring TBE in Spanish

PROPOSED PROGRAM

2013-2014

Student Identification

- ▣ Home Language Survey is filled out at registration.
- ▣ Follow the procedures created to ensure all ELL students are identified and tested.
- ▣ All ELL paperwork maintained in student permanent file at each school.

Program Structure

- ▣ Parker
- ▣ 3 Elementary Buildings
 - **Rock Cut** who will partner with Windsor
 - **Maple** who will partner with Marquette
 - **Loves Park** who will partner with Olson Park
- ▣ Harlem Middle School
- ▣ Harlem High School
- ▣ All ELL 1st graders and new ELL students must attend one of the 3 buildings to receive services
- ▣ ELL programming will be phased out at the partner schools – one grade/year

Staffing

- ▣ Eliminate the 4 ELL paraeducator positions
- ▣ 1 Bilingual – Spanish FTE at Parker
- ▣ 2 FTE at Rock Cut, Maple, and Loves Park
 - 1 **must** be Bilingual – Spanish, preferably both
 - Will service partner school until phased out
- ▣ 1 Bilingual – Spanish FTE at Harlem Middle School
- ▣ 1 FTE at Harlem High School Campuses
 - Preferably Bilingual - Spanish
- ▣ ELL/Bilingual Administrator **must** be appointed by July 1, 2014.

Instruction and Assessment

- ▣ Develop a Spanish Language Arts Curriculum
 - Aligned to our English/Language Arts Curriculum
 - Three elementary buildings and HMS
- ▣ Classroom teachers will collaborate with Bilingual/ELL teacher to ensure grade is reflection of what was learned
- ▣ Professional Development for all teachers working with ELL students
 - Focus on buildings with programs
 - Encourage general education teachers to obtain their English as a Second Language (ESL) endorsement