



ENROLLMENT PROJECTION 2023-24

Independent School District 877
Buffalo-Hanover-Montrose

November 28, 2022

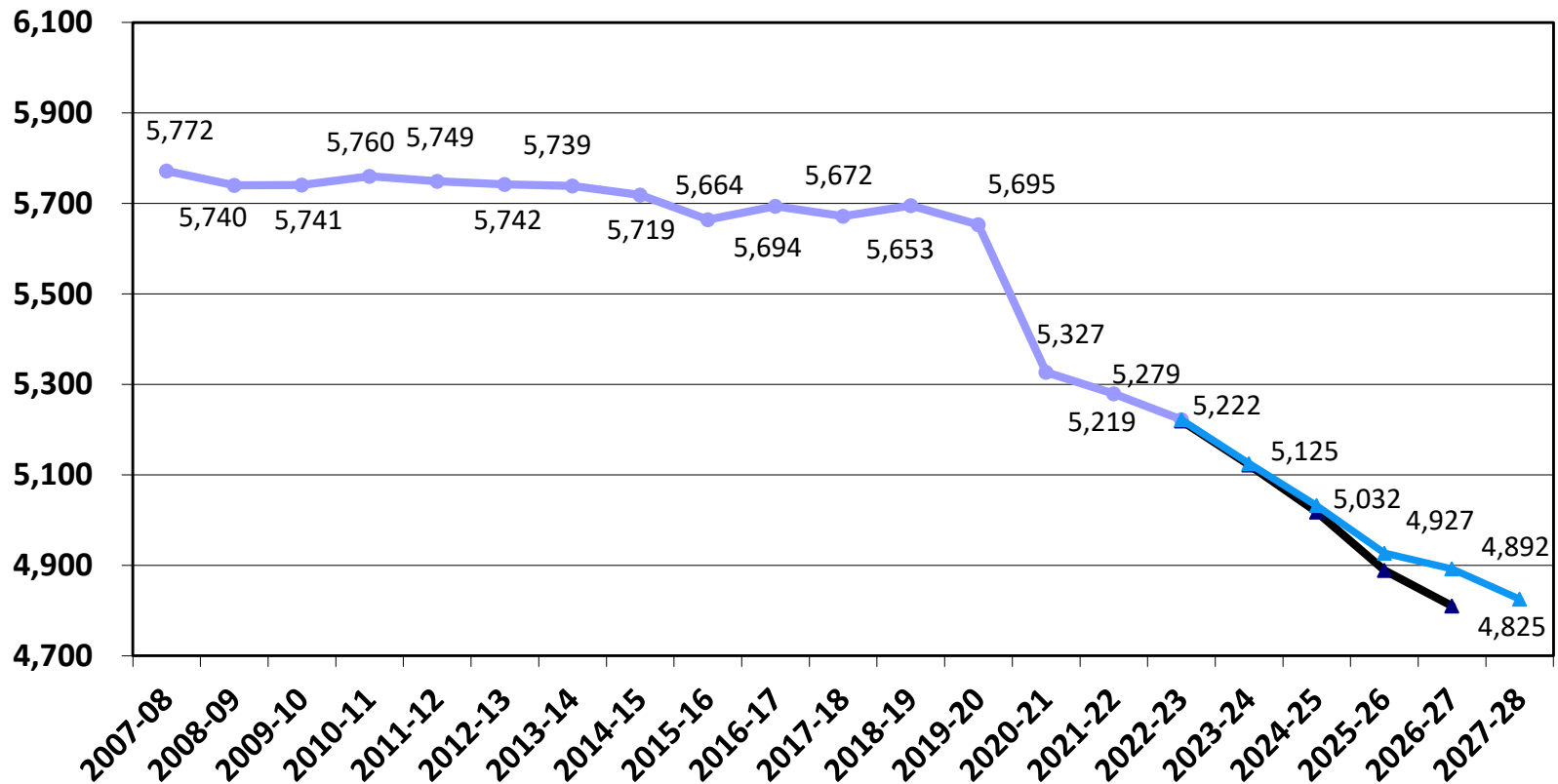


Enrollment Projection Report

- Review of K-12 enrollment as of Oct. 1st
- Resident enrollment
- Open enrollment & tuition
- Nonpublic enrollment
- Fall vs. spring enrollment
- Review 2022-23 enrollment projection
- 2023-24 enrollment projection



Historical and 2022-23 Projected K-12 Enrollment as of Oct. 1st



Review of K-12 Enrollment as of Oct. 1st

- We are below last year's enrollment by 58 students.
- The five-year enrollment is a decline and currently averaging -90.0 students/year.
- Total enrollment change over the past five years is -450 students or -7.90%.
- The totals are greatly skewed due to the COVID-19 pandemic.

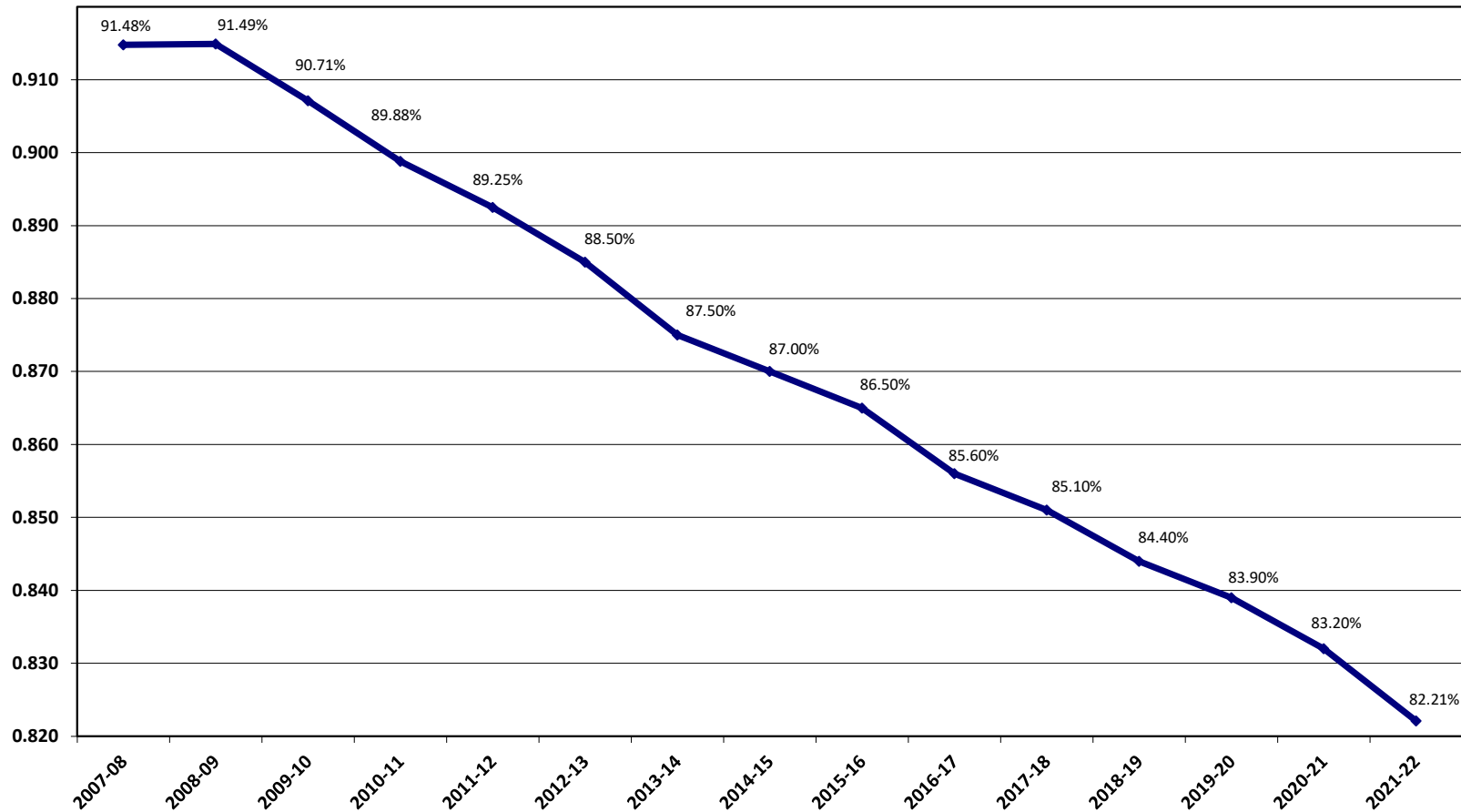
	2018-19	2019-20	2020-21	2021-22	2022-23
K-12 enrollment	5,695	5,653	5,327	5,280	5,222
Change over prior year	23	-42	-326	-47	-58
% change	.41%	-.74%	-5.77%	-.88%	-1.09%

Total Resident Students Enrolled in ISD 877 as of June 30th

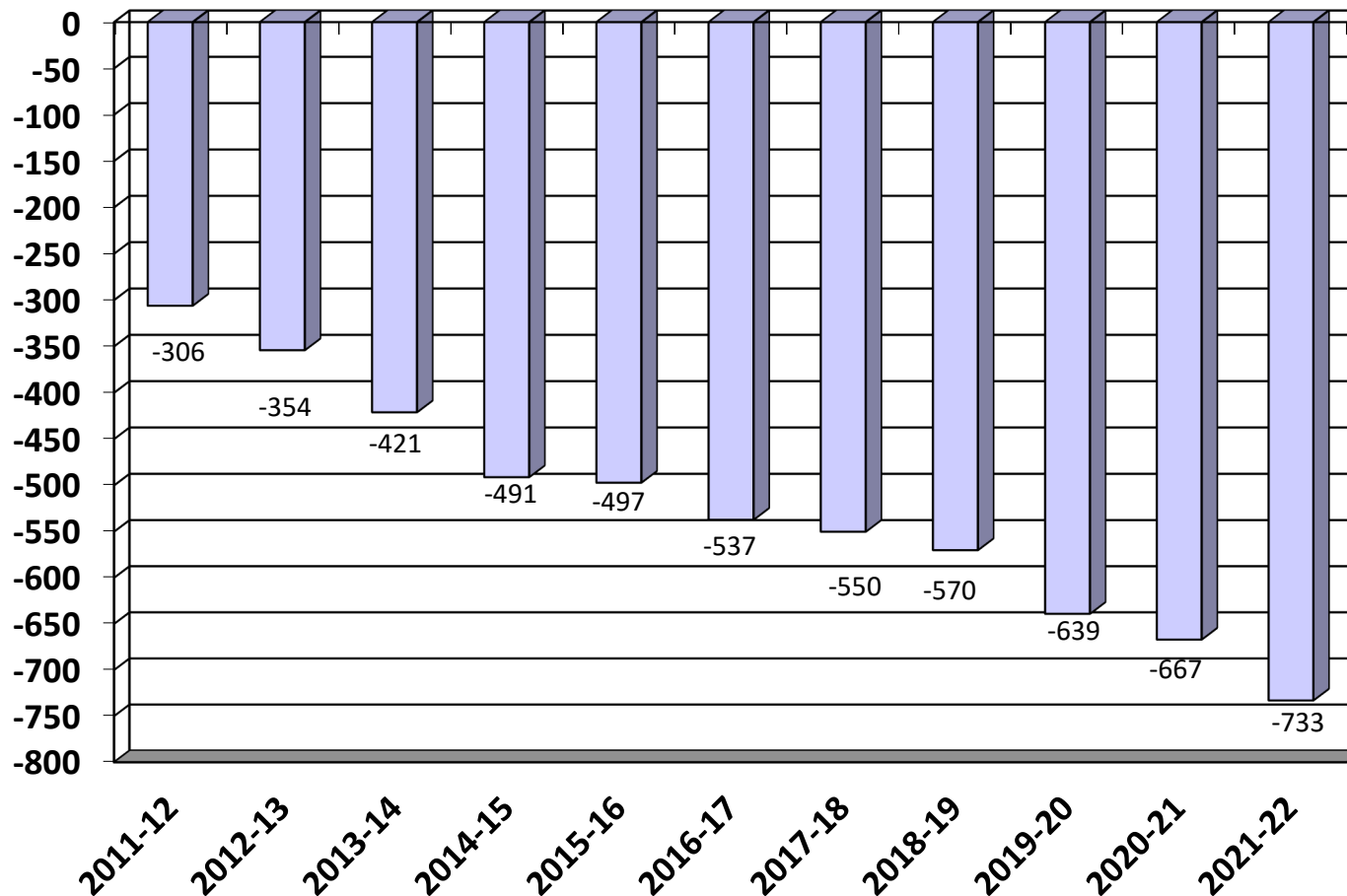
- BHM's resident population increased and the residents served population declined this past year.

	2017-18	2018-19	2019-20	2020-21	2021-22
Residents served	5,309	5,323	5,278	5,024	4,967
Residents going elsewhere	931	980	1,007	1,012	1,075
Total Residents	6,240	6,303	6,285	6,036	6,042
Change over prior year	10	63	-18	-249	6
% change	-0.16%	1.18%	-0.34%	-4.72%	0.10%
% Served vs. Total Population	85.1%	84.4%	83.9%	83.2%	82.2%

Total Resident Students Enrolled in ISD 877 as of June 30th



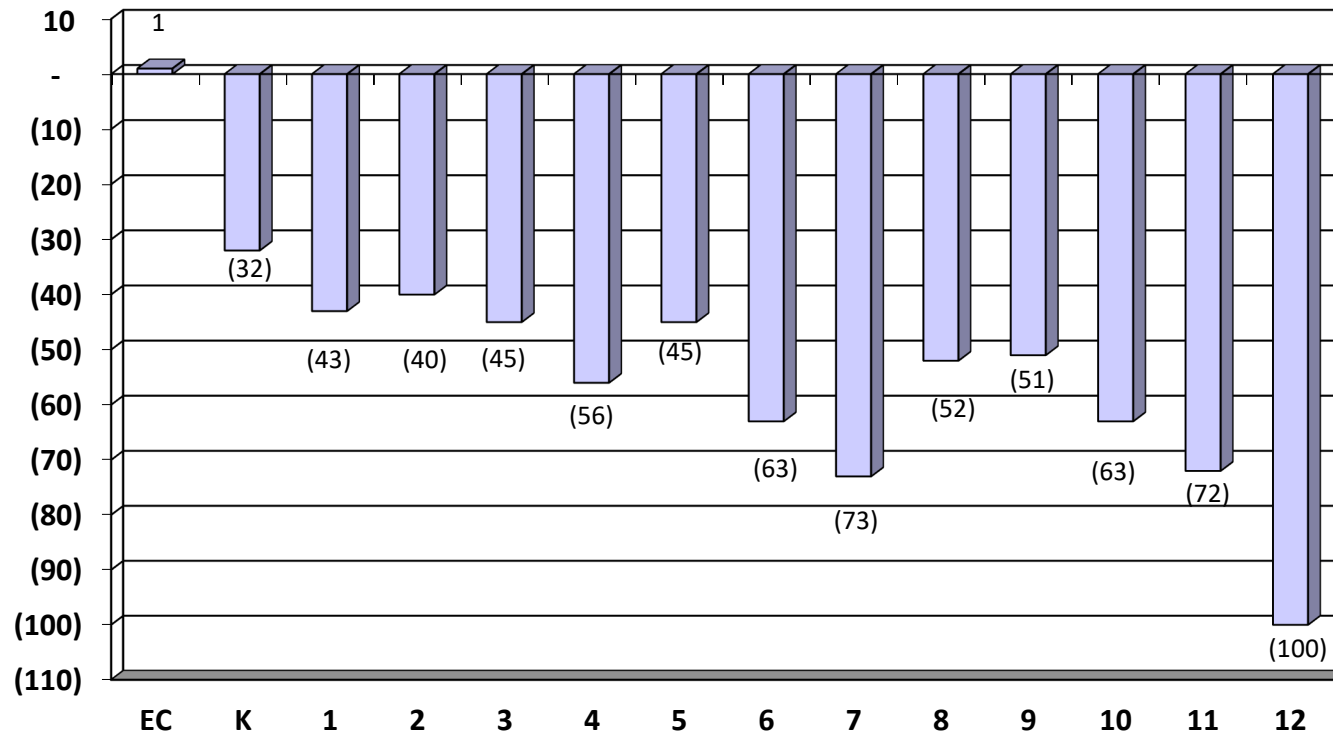
Open Enrollment & Tuition Net Gain/Loss as of June 30th



2021-22 Open Enrollment & Tuition Gain/Loss by District as of June 30th

District	In	Out	Net	Prior Year	Targeted Services, Tuition, and Charter/Online			
					School/District	21-22	20-21	Difference
Delano	6	174	-168	-153	Southwest Metro Educational Coop	-55	-34	-21
Rockford	44	178	-134	-147	Jane Goodall Environmental Science	-30	-22	-8
St. Michael-Albertville	66	191	-125	-101	Minnesota Transitions	-23	-29	6
Watertown-Mayer	5	67	-62	-53	Spectrum Charter High School	-16	-15	-1
Elk River	10	61	-51	-32	Wright Technical Center	-12	-15	3
Osseo	4	20	-16	-25	Swan River Montessori	-10	-9	-1
Orono	0	14	-14	-17	Houston	-7	-8	1
Anoka-Hennepin	4	3	1	0	Parnassus School	-7	-8	1
Becker	3	1	2	1	Bluesky Charter School	-7	-6	-1
Big Lake	6	4	2	5	Kaleidoscope School	-7	-6	-1
Dassel-Cokato	6	4	2	3	MAWSECO	-4	-7	3
Waconia	5	2	3	2	Minnesota Online HS	-4	-3	-1
Monticello	44	37	7	8	Eagle Ridge Academy	-2	-2	0
Annandale	14	2	12	9				
Howard Lake-W-W	53	37	16	3				
Maple Lake	55	32	23	41				

2021-22 Net Open Enrollment & Tuition by Grade as of June 30th

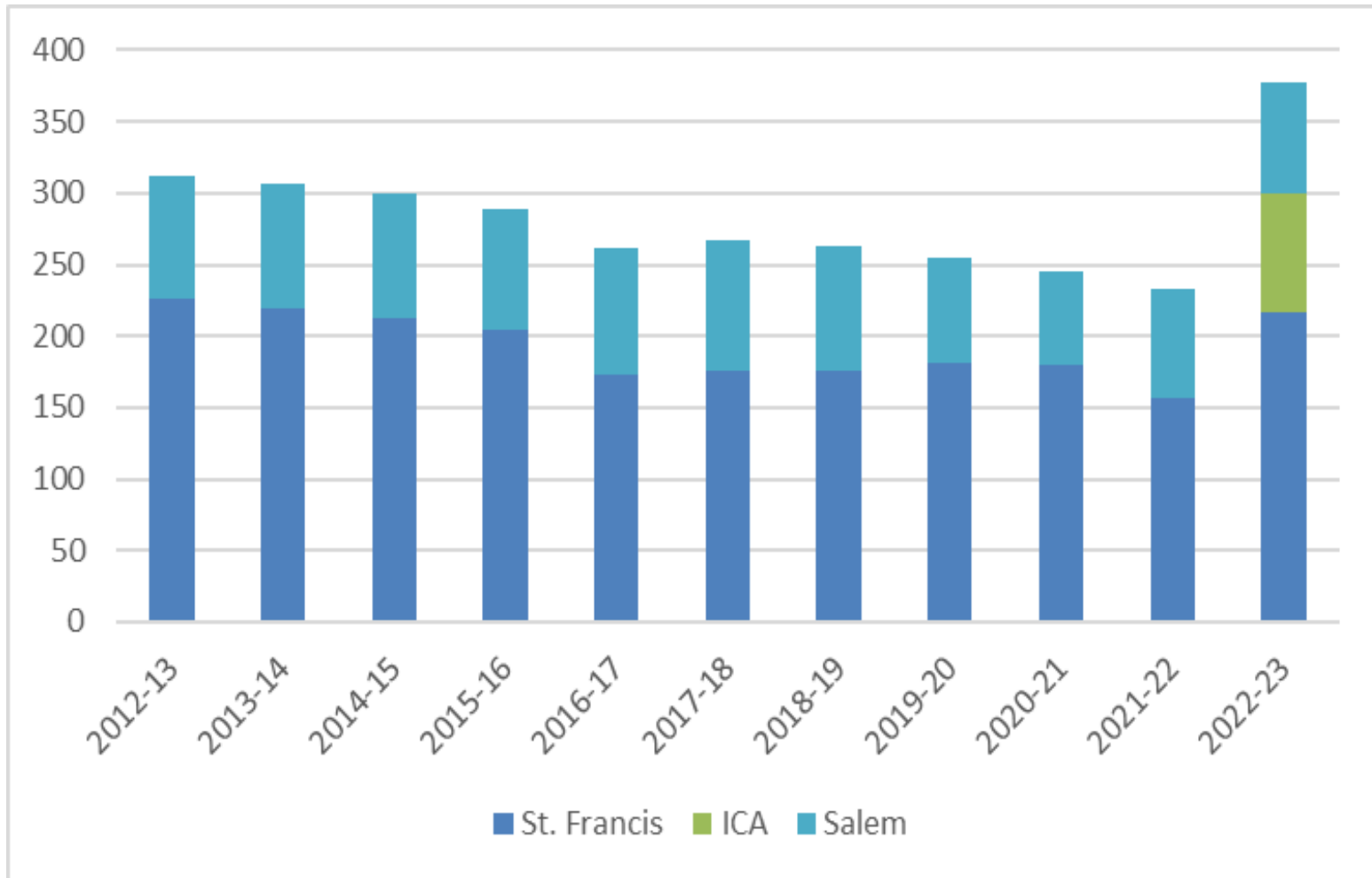


Nonpublic History

- Three nonpublic schools in the BHM district: St. Francis Xavier (K-8) and Christian Impact Academy (K-9) in Buffalo and Salem Lutheran (K-8) in Greenfield.
- Homeschool totals not graphed below were 184 on 10/1/17, 206 on 10/1/18, 220 on 10/1/19, 449 on 10/1/20, and 343 on 10/1/21, and 337 on 10/1/22.

	13-14	14-15	15-16	16-17	17-18	18-19	19-20	20-21	21-22	22-23
Salem	86	88	84	89	91	87	74	65	77	78
St. Francis	220	212	205	173	176	176	181	180	156	217
ICA										83
Total	306	300	289	262	267	263	255	245	233	378
# Change	-6	-6	-11	-27	5	-4	-4	-10	-12	145
% Change	-.92%	-1.96%	-3.67%	-9.34%	1.91%	-1.50%	-1.50%	-3.92%	-4.90%	62.2%

Nonpublic History



2021-22 Enrollment

Fall vs. Spring

- Historically, the district's K-12 enrollment decreases from October 1 to June 1.
- Most of the enrollment drops happen in grades 9-12.
- 2021-22 was similar to 2020-21 in that starting and ending student numbers were very comparable.

	Oct. 1 st , 2021	Jun. 1 st , 2022	Net	Prior Year
K	362	362	0	4
Gr. 1-5	1,886	1,907	21	16
Gr. 6-8	1,190	1,205	15	11
Gr. 9-12	1,842	1,796	-46	-52
Total	5,280	5,270	-10	-21

Historical Enrollment

Fall vs. Spring

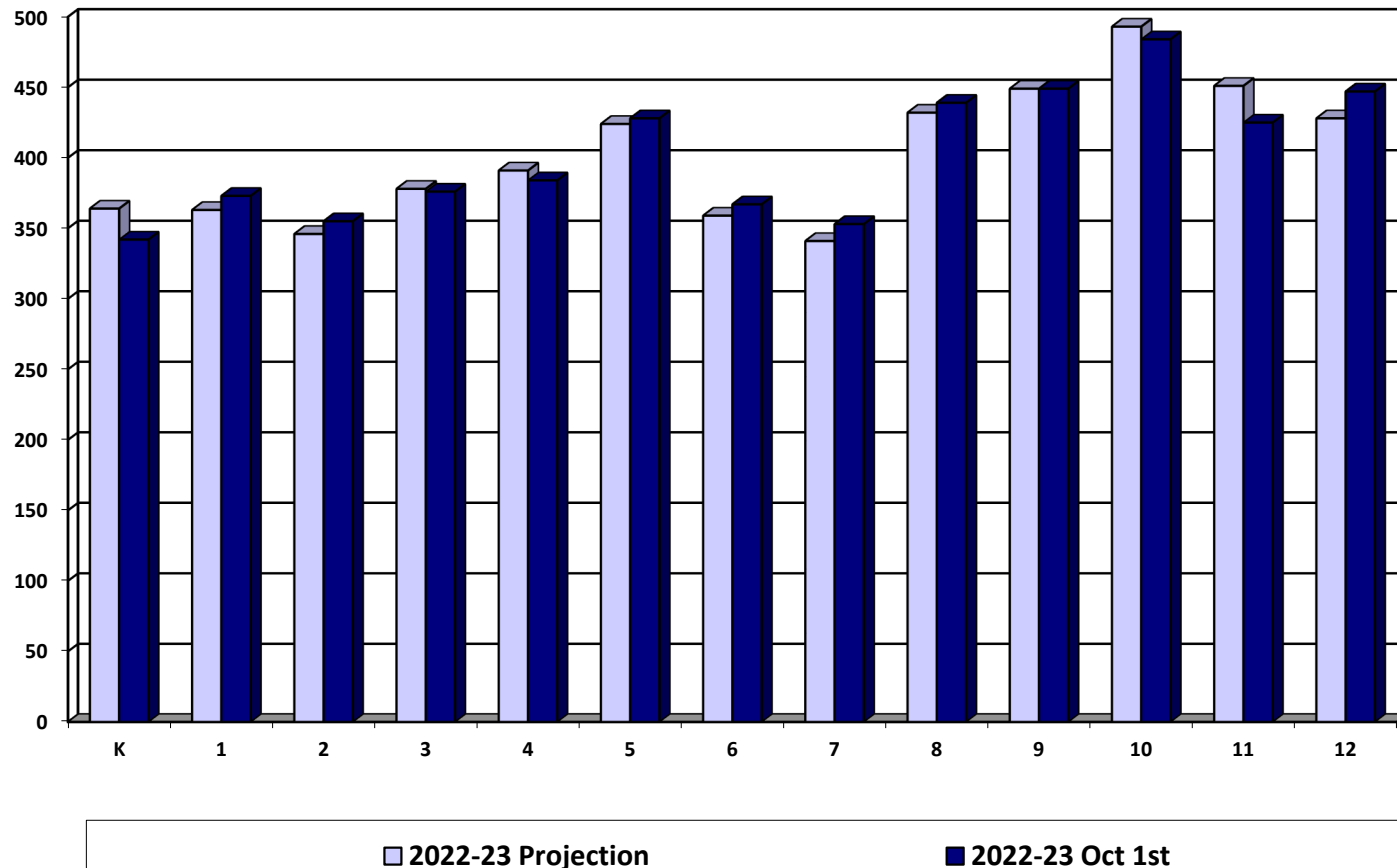
	K	Gr. 1-5	Gr. 6-8	Gr. 9-12	Net
2011-12	-10	-11	-14	-94	-129
2012-13	-2	-14	1	-86	-101
2013-14	2	-7	2	-127	-130
2014-15	-10	6	-8	-89	-101
2015-16	7	39	-1	-99	-54
2016-17	3	-16	10	-110	-113
2017-18	1	14	-11	-107	-103
2018-19	9	20	-3	-71	-45
2019-20	-6	-26	-9	-127	-168
2020-21	4	16	11	-52	-21
2021-22	0	21	15	-46	-10

Review of 2022-23 Enrollment Projection

- Last year's enrollment projection was underestimated by 3 students.
- Our internal monthly enrollment reports adjust down post-secondary and shared time students.
- The official Oct. 1st MARSS submission by MDE will report a higher enrollment with post-secondary and shared-time students.

	2022-23 Projection	2022-23 Oct. 1st	Difference
K	364	342	-22
Gr. 1-5	1,902	1,916	14
Gr. 6-8	1,132	1,159	27
Gr. 9-12	1,821	1,805	-16
Total	5,219	5,222	3

Review of 2022-23 Enrollment Projection by Grade



Enrollment Projection Data

Enrollment Projection Data

- The district uses a combination of results from multiple enrollment projection models.
- The models allows schools to develop enrollment projections based on three different sets of data:
 - ☐ **October 1st MARSS submission**
 - ☐ **End of Year ADM** is generally used for financial forecast
 - ☐ **District Data** allows schools to enter enrollment history taken at any time, resident ADM or any other historical data by grade

Kindergarten Projection Methods

- **Hold constant** maintains the 2022-23 kindergarten level.
- **Linear projection** is a straightforward mathematical projection based on nothing more than the past five years of data.
- **County birth method** uses the total number of live births in Wright County and examines what percentage of those births enroll in kindergarten. The projection is based on the average percentage of the last four years.
- **District-determined method** examines county birth rates in Wright County and compares that to actual student enrollment numbers in the District and projects that percentage for the next five years.

Kindergarten Projection Methods

- Using Oct. 1st district data

	18-19	19-20	20-21	21-22	22-23	23-24	24-25	25-26	26-27	27-28
Actual enrollment	391	400	348	362	342					
Hold constant						342	342	342	342	342
Linear projection						346	339	332	325	318
Wright Co. Avg. births						362	353	354	375	379
District Determined Method						362	343	354	379	364

Kindergarten Projection Methods

Birth Year	Kdgn Enroll Year	Wright Co. Births	Actual Kdgn Enrollment	% of Wright Co. Births Enrolled
2010	2015	1,891	370	19.6%
2011	2016	1,855	358	19.3%
2012	2017	1,829	413	22.6%
2013	2018	1,784	391	21.9%
2014	2019	1,791	400	22.3%
2015	2020	1,799	343	19.4%
2016	2021	1,785	363	20.5%
2017	2022	1,705	343	20.1%
2018	2023	1,767	362*	20.5%*
2019	2024	1,672	343*	20.5%*
2020	2025	1,726	354*	20.5%*
2021	2026	1,851	379*	20.5%*

* Projected K enrollment based on County births-4-year average

Enrollment Projection Methods

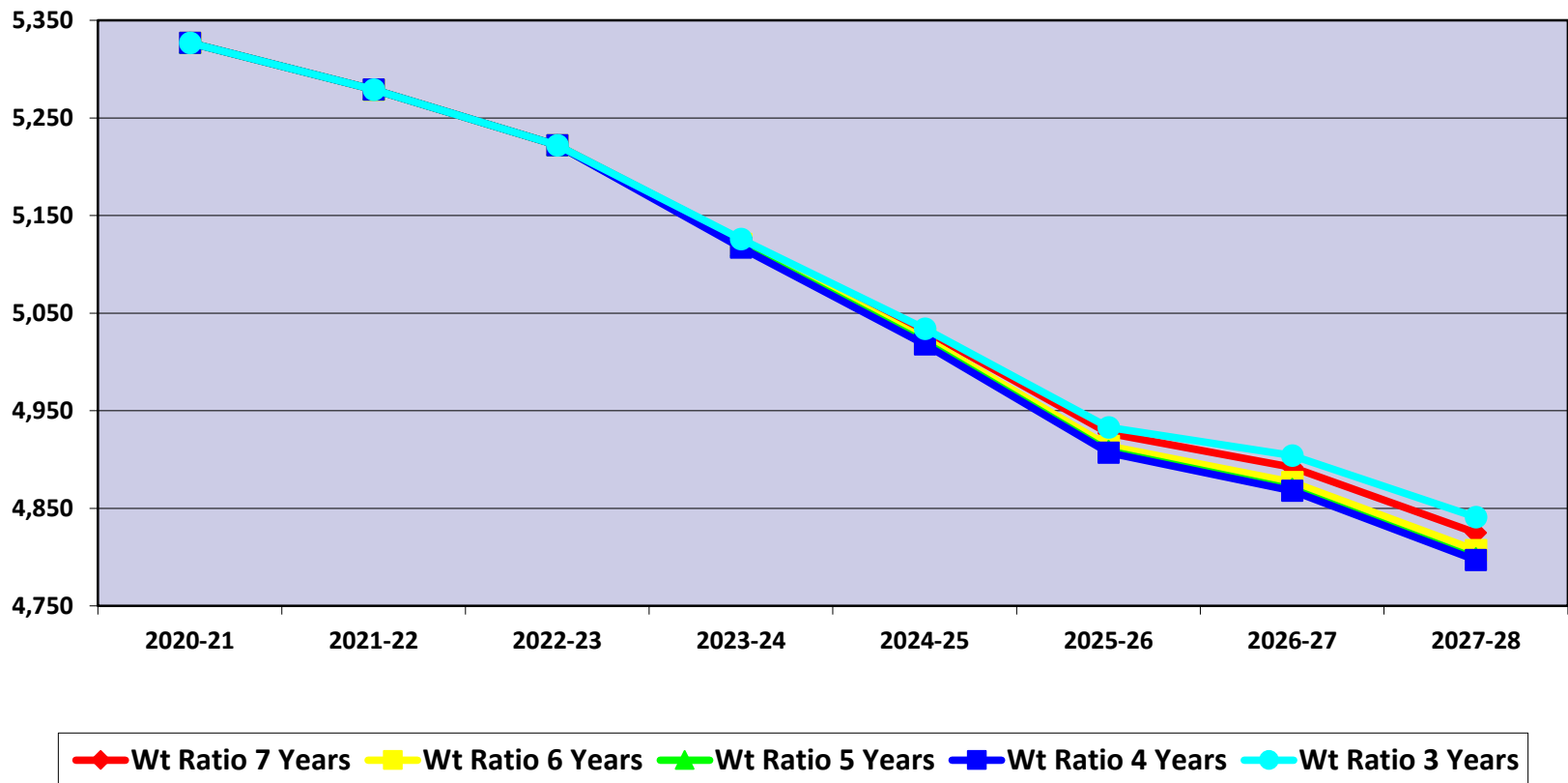
- After the kindergarten enrollment projection is complete, the overall K-12 enrollment is determined by a variety of methods:
 - ☐ Cohort Survival Method
 - ☐ Weighted Cohort Survival Method
 - ☐ Numerical Survival Method
 - ☐ Weighted Numerical Survival Method
 - ☐ Merged Method

Projection Methods Comparison

- Using Oct. 1st district data, eighteen different variations were examined.
- The following five were selected for detailed analysis:

	22-23	23-24	24-25	25-26	26-27	27-28
Wt Ratio 3 Years	5,222	5,126	5,034	4,933	4,904	4,841
Wt Ratio 4 Years	5,222	5,117	5,018	4,907	4,868	4,797
Wt Ratio 5 Years	5,222	5,119	5,020	4,909	4,870	4,799
Wt Ratio 6 Years	5,222	5,121	5,024	4,914	4,877	4,807
Wt Ratio 7 Years	5,222	5,125	5,032	4,927	4,892	4,825
Max Difference		-9	-16	-26	-36	-44

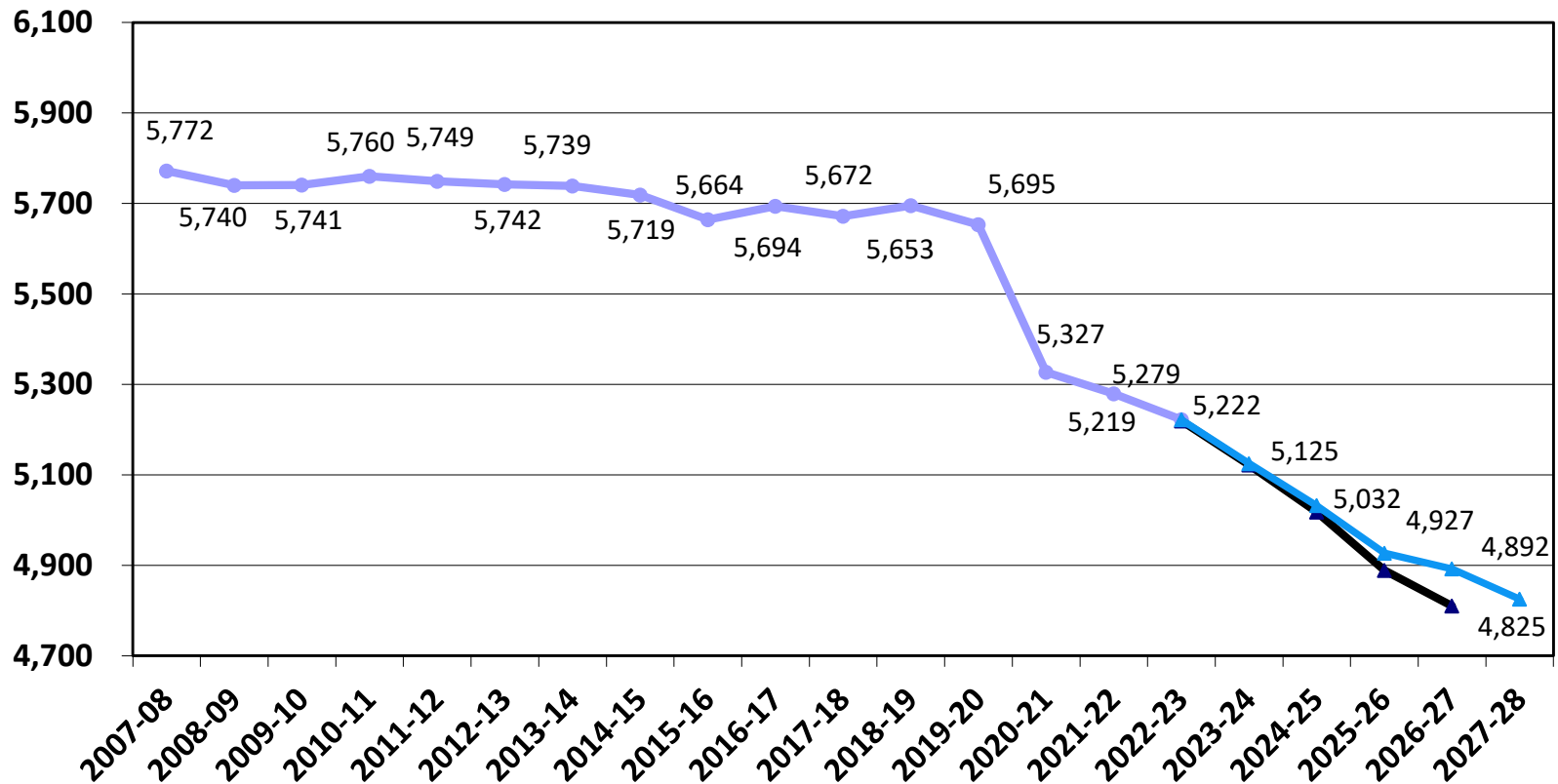
Projection Methods Comparison



2023-24 Enrollment Projection

- Factors considered: housing market, economic conditions, the duration of the current pandemic, Wright County births, and open enrollment
 - Building permits by city:
 - Buffalo - 29 building permits issued during 2022 compared to 81 in 2021
 - Hanover - 70 building permits issued during 2022 compared to 97 in 2021
 - Montrose - 0 building permits issued during 2022 compared to 40 in 2021
- 4-year kindergarten attendance average 20.7%
- Weighted ratio 7 years
- K-12 Enrollment 5,125
- Decrease of 97 students or 1.86% from the 2022-23 projection

Historical and 2022-23 Projected K-12 Enrollment as of Oct. 1st

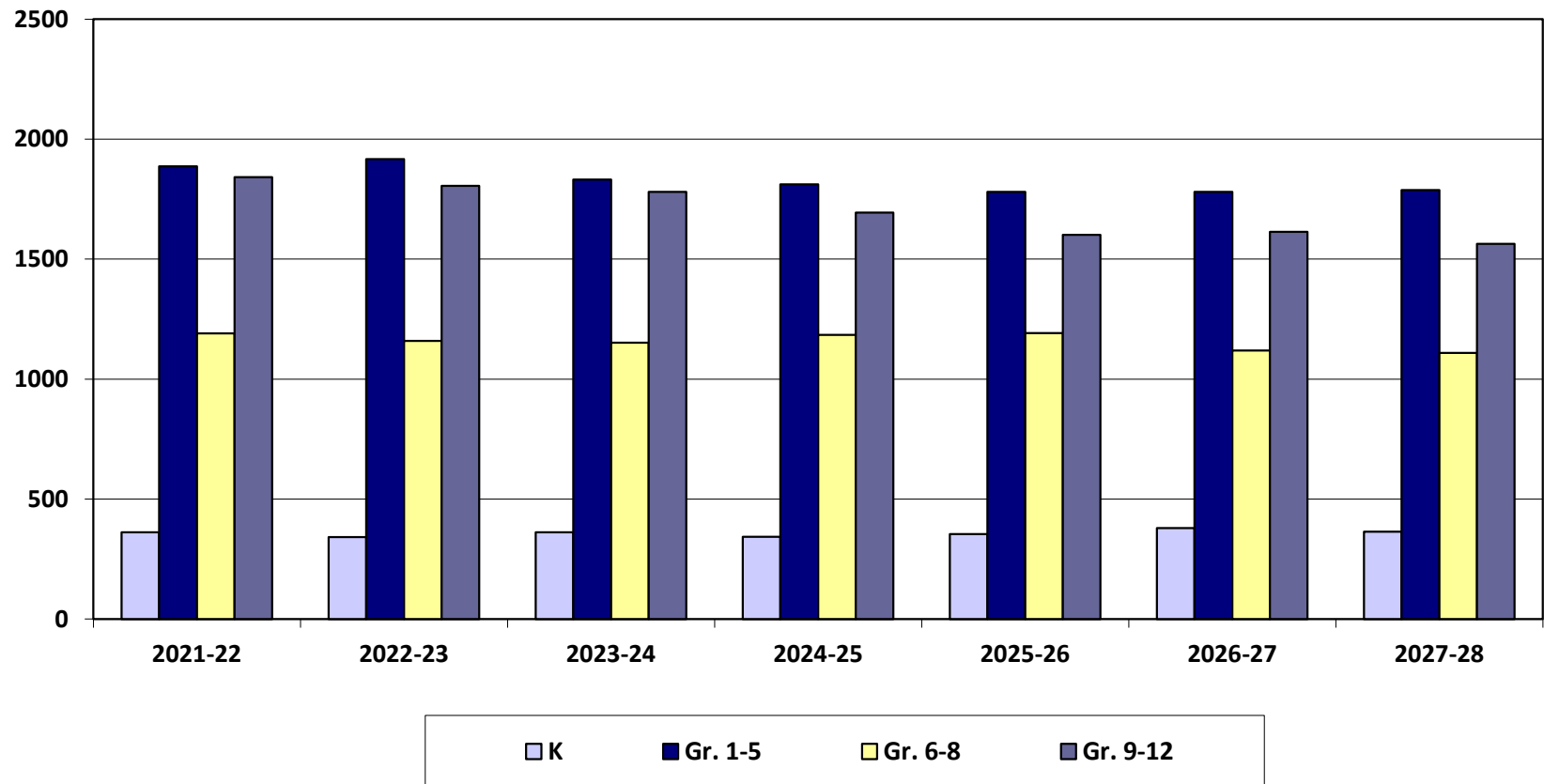


2022-23 Enrollment Projection by Grade Groupings

- With future enrollments, we need to consider building capacity:
 - BHS – 2,010
 - BCMS – 1,425
 - Elementary – 3,350

	2021-22	2022-23	2023-24	2024-25	2025-26	2026-27	2027-28
K	362	342	362	343	354	379	364
Gr. 1-5	1,886	1,916	1,831	1,811	1,780	1,780	1,788
Gr. 6-8	1,190	1,159	1,152	1,184	1,192	1,119	1,109
Gr. 9-12	1,841	1,805	1,780	1,694	1,601	1,614	1,564
Total	5,279	5,222	5,125	5,032	4,927	4,892	4,825
	-48	-57	-97	-93	-105	-35	-67
	-0.84%	-1.08%	-1.86%	-1.81%	-2.09%	-0.71%	-1.37%

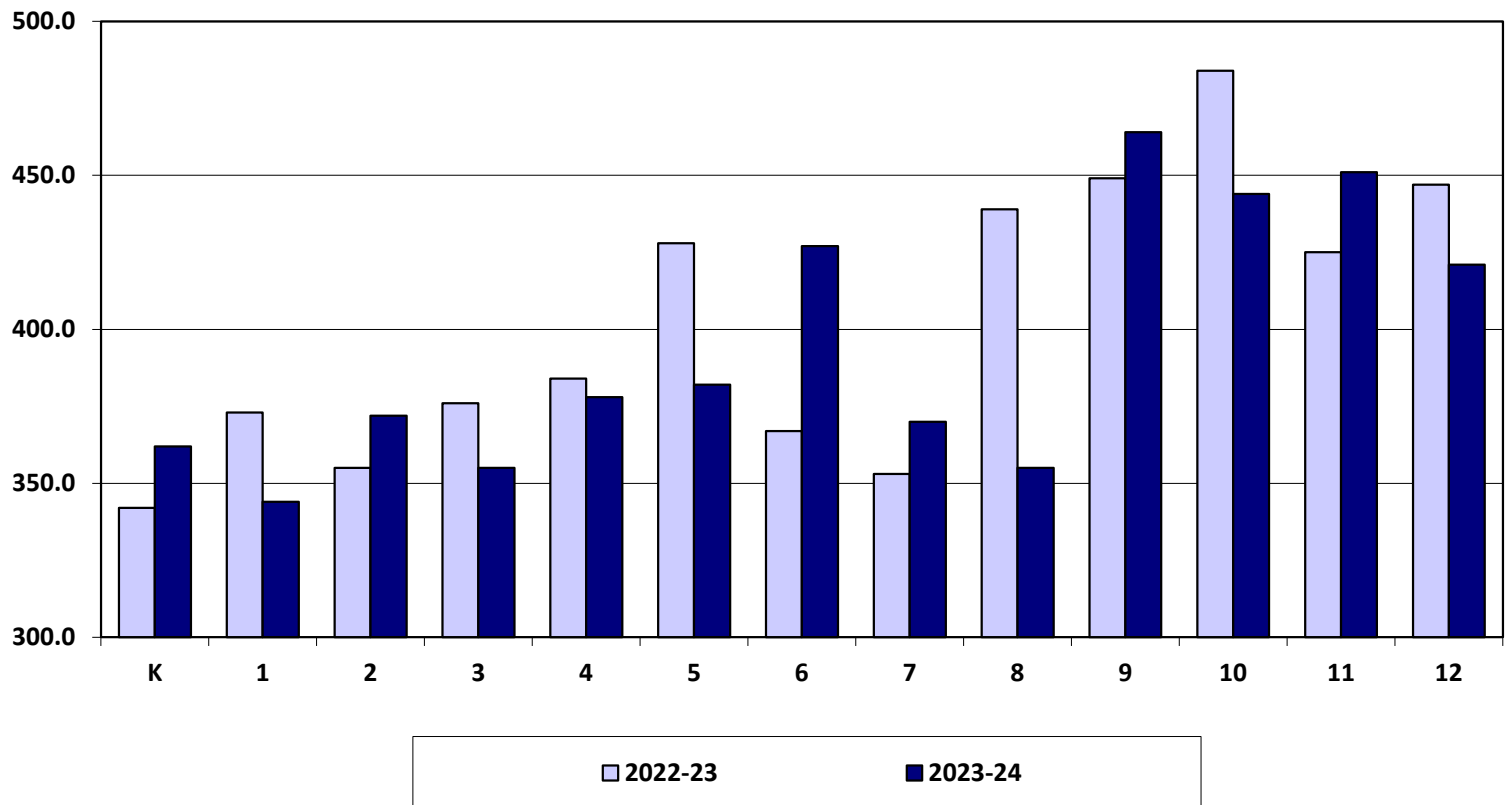
2022-23 Enrollment Projection by Grade Groupings



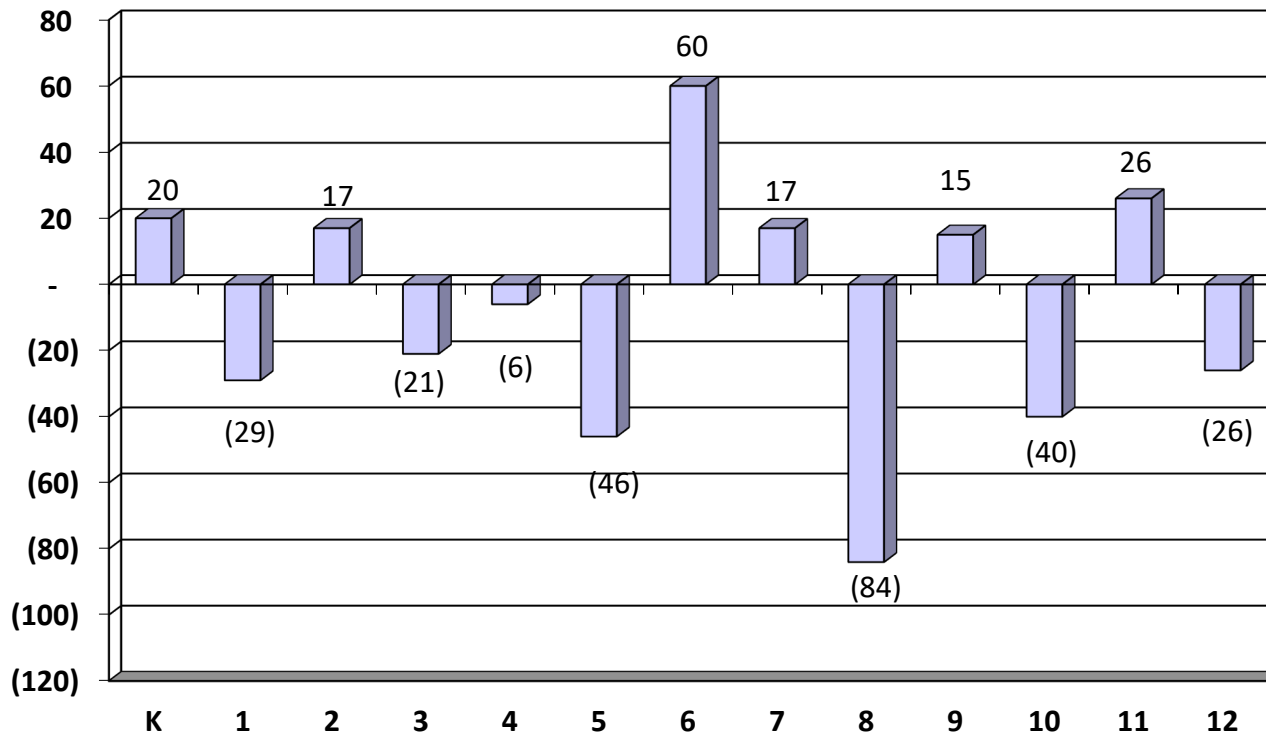
2022-23 Enrollment Projection by Grade

	2022-23	2023-24	2024-25	2025-26	2026-27	2027-28
K	342	362	343	354	379	364
1	373	344	364	345	356	381
2	355	372	343	363	344	355
3	376	355	372	343	363	344
4	384	378	356	374	345	365
5	428	382	376	355	372	343
6	367	427	381	375	354	371
7	353	370	430	384	378	357
8	439	355	373	433	387	381
9	449	464	375	393	457	408
10	484	444	458	371	389	452
11	425	451	414	427	345	362
12	447	421	447	410	423	342
Total	5,222	5,125	5,032	4,927	4,892	4,825

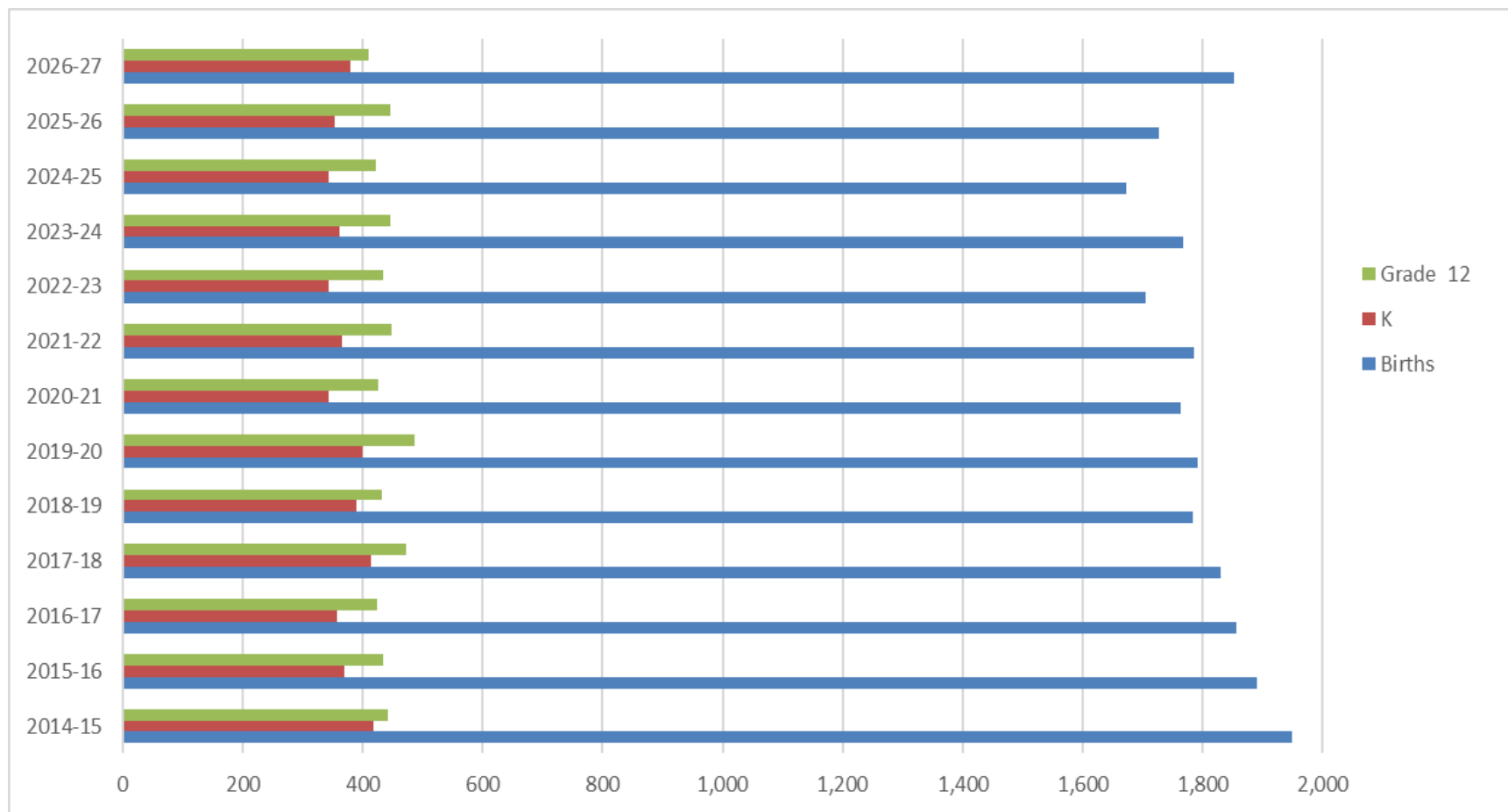
2022-23 Actual vs. 2023-24 Enrollment Projection by Grade



2023-24 Enrollment Change by Grade



Births, Kindergarten, and Grade 12



WADM Report

- The weighted average daily membership (WADM) projection shows a decline in student aid.
- Keep in mind the district's enrollment history also tends to decline from Oct. 1st to June 1st.

	2022-23		2023-24		2024-25		2025-26		2026-27	
	Enroll	WADM	Enroll	WADM	Enroll	WADM	Enroll	WADM	Enroll	WADM
K	342	342	362	362	343	343	354	354	379	379
Gr. 1-3	1,104	1,104	1,071	1,071	1,079	1,079	1,051	1,051	1,063	1,063
Gr. 4-6	1,179	1,179	1,187	1,187	1,113	1,113	1,104	1,104	1,071	1,071
Gr. 7-8	792	950	725	870	803	964	817	980	765	918
Gr. 9-12	1,805	2,166	1,780	2,136	1,694	2,033	1,601	1,921	1,614	1,937
ECSE	72	72	55	55	60	60	75	75	60	60
MCPU		24		37		25		30		16
Total	5,294	5,837	5,180	5,718	5,092	5,617	5,002	5,515	4,952	5,444

Conclusion

- Uncertain economic and environmental factors make enrollment projections difficult.
- BHM's enrollment is projected to decline over the next three to five years.

5,125

