

UNITED INDEPENDENT SCHOOL DISTRICT AGENDA ACTION ITEM

TOPIC: PROPOSED BOUNDARY FOR CLARK MIDDLE AND UNITED MIDDLE 2008-2009

SUBMITTED BY: MIKE GARZA **OF:** DIRECTOR OF SUPPORT SERVICES

APPROVED FOR TRANSMITTAL TO SCHOOL BOARD: _____

DATE ASSIGNED FOR BOARD CONSIDERATION: June 10, 2008

RECOMMENDATION: Staff recommends approval of the proposed boundary change for the 2008-2009 school year.

RATIONALE: The proposed boundary change will rectify the cluster of students currently attending United Middle School.

BUDGETARY INFORMATION:

N/A

BOARD POLICY REFERENCE AND COMPLIANCE:

N/A

NEW PROPOSED SCHOOL ATTENDANCE ZONES FOR 2008-2009

United Middle School

The United Middle Boundary starts at the Northeast Boundary on Bob Bullock Loop and Del Mar Blvd. West on Del Mar, including Winfield and Country Club area North on Country Club Dr. to McPherson south on McPherson; West on Laurel to include Crestview and Hillplace; West on Andrew; South on Lindenwood; West on Idylwood, West on Berkley; North on Broadcrest to Antonia; South on Broadcrest; West on Candlewood to Del Mar Blvd. West on Del Mar to Springfield to include Hilltop and Salinas Key Subdivision up to International Blvd. west on International Blvd. to IH 35. South on IH 35 to Del Mar Blvd. West on Del Mar Blvd. to Rio Grande River. South along Rio Grande River; East on Calton to San Dario; North on San Dario; East on Calle Del Norte to include all students residing North of Calle del Norte up to McPherson; North on McPherson to include all students residing West of McPherson up to Jacaman; East on Jacaman to include all students residing North of Jacaman up to Bob Bullock Loop to include Lakeside Subdivision.

Clark Middle School

The Clark Middle Boundary starts on IH 35 go East on Calle Del Norte to include all students residing South of Calle del Norte up to McPherson; North on McPherson to include all students residing East of McPherson up to Jacaman, East on Jacaman to include all students residing South of Jacaman up to Bob Bullock Loop. Go South on Loop 20 to Casa Blanca Rd. (to include all those living in the inner loop Casa Blanca east to Loop 20) to Saunders; West on Saunders to Queen Sago; South on Queen Sago to Ash; West on Ash to Ejido; North on Ejido to Pappas; West on Pappas; West on Daugherty; West on Markley to the Rio Grande River; North along Rio Grande river to Calton; East on Calton to IH 35.

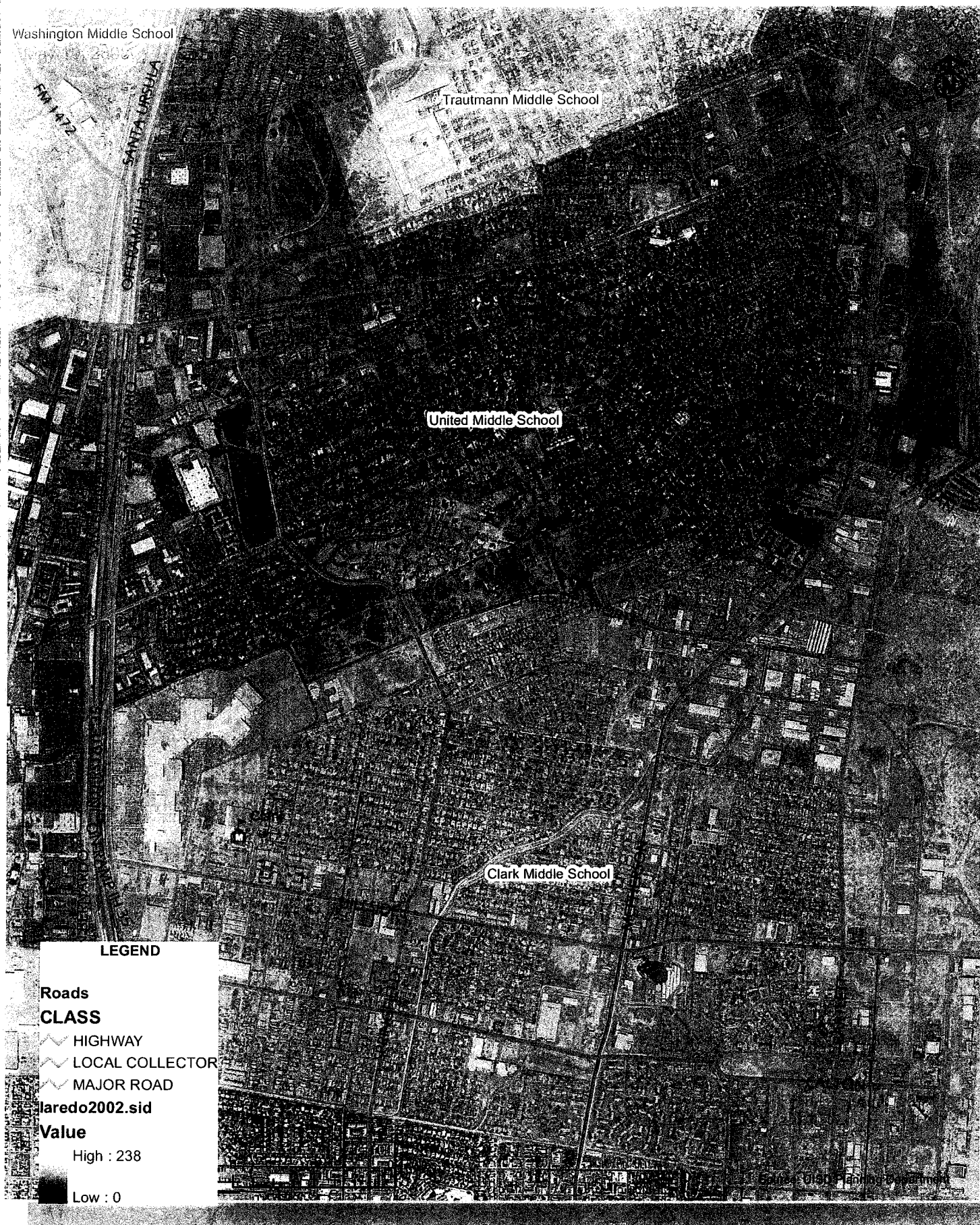
NEIGHBORHOOD STREETS TO BE INCULDED WITH
THE UNITED MIDDLE SCHOOL BOUNDARY

LOS JARDINES

CLAVELES
ROSALES
DEL NORTE

JACARANDA
VIOLETA

CURRENT BOUNDARIES FOR UNITED MIDDLE AND CLARK MIDDLE



PROPOSED BOUNDARIES FOR UNITED MIDDLE AND CLARK MIDDLE

Washington Middle School

Trautmann Middle School

United Middle School

Clark Middle School

LEGEND

Roads

CLASS

~ HIGHWAY

~ LOCAL COLLECTOR

~ MAJOR ROAD

laredo2002.sid

Value

High : 238

Low : 0

Escondido Planning Department

ESCONDIDO PLANNING DEPARTMENT
1000 W. MAIN ST., SUITE 100
ESCONDIDO, CA 92026
TEL: 760/941-1000
WWW.ESCONDIDOPLANNING.COM

United Middle School Boundary Change Impact (2008-09)

	Incoming 5th	Current 6th	Current 7th	Total Adjustment
Los Jardines Area UNITED MIDDLE SCHOOL	4	6	4	14