

Handle With Care



What is Handle With Care?

- First piloted in Charleston, WV in 2013
- Bridges communication gap between schools and law enforcement so that children who are exposed to potentially traumatic events receive appropriate interventions.
- Interventions that will help give them the best chance of succeeding in school.

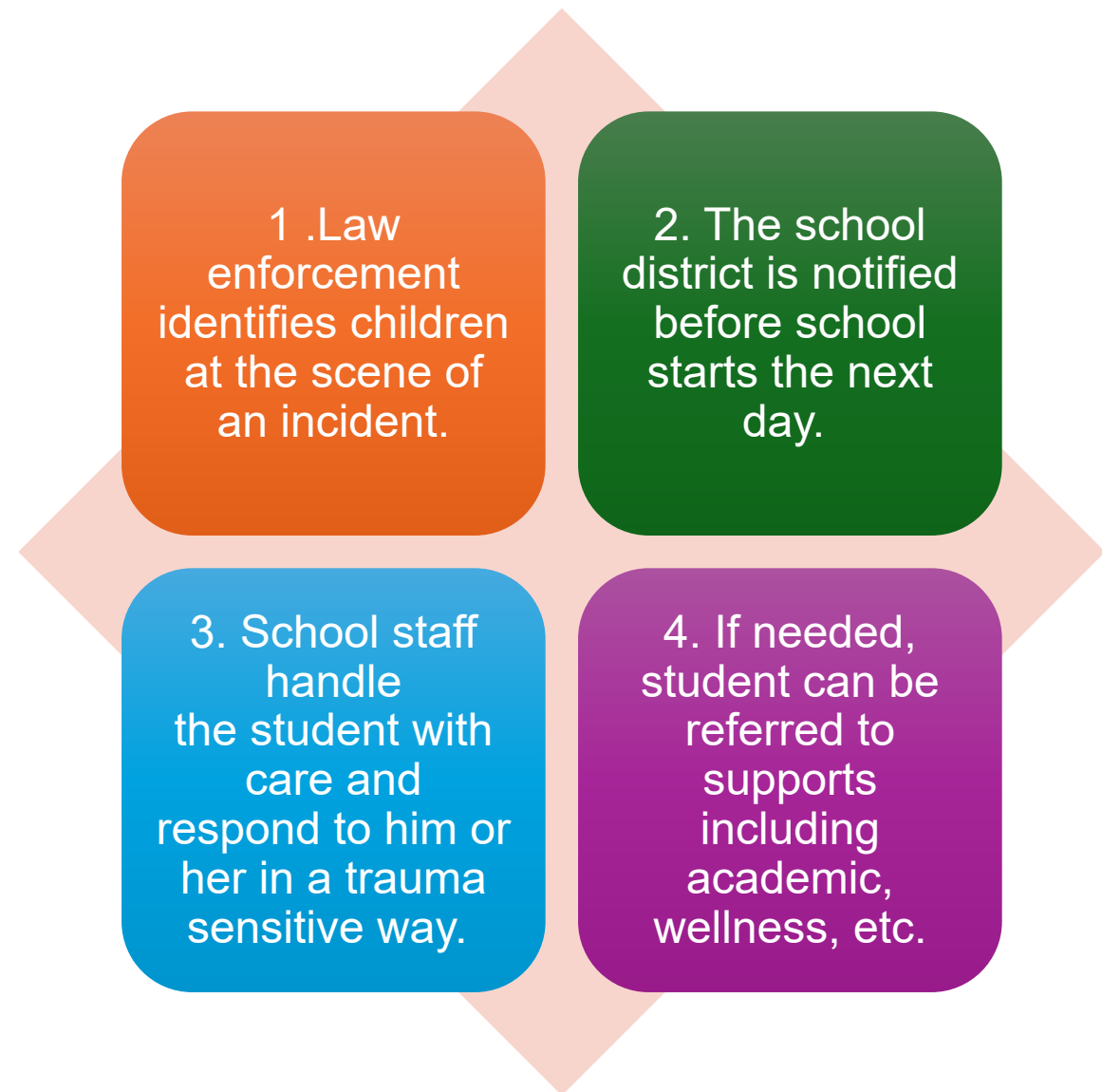


Goals of Handle With Care

To offer academic & social-emotional support to a student, should they present symptoms related to a traumatic event. The staff's observation may help mitigate the after effects.

To connect students with accessible mental health services and provide additional supports, if needed

How does HWC work?



Notification Process

- Incidents that would initiate a Handle with Care notice could include being a victim, or witness to the following: domestics violence, traffic accident with injuries, drug overdose, natural death, shooting, arrest of loved one, child abuse or neglect, robbery, home invasion, house fire, mental health related, search warrant, etc.
- It is important to point out that not all of these incidents are violent or involve a criminal activity. Please **avoid making assumptions** about why your student has received a HWC notice.

Notification Process

- The school district is notified before school starts the next day.
 - Law enforcement personal will advise, by phone or email, a simple notice to the **designated individuals** at student's school. The alert includes the student was involved in a police-related incident and could experience academic or behavioral challenges.
 - **Designated individuals: School Principal, Classroom Teacher, School Social Worker.**



Trauma Sensitive Schools

- **Privacy**

- Law enforcement will **NOT** provide any details of the incident to the school per Illinois Juvenile Statute provision.
 - Staff will **NOT** ask or probe child about details.
 - This notice information should **NOT** leave the school.
Confidentiality is Respectful.
-

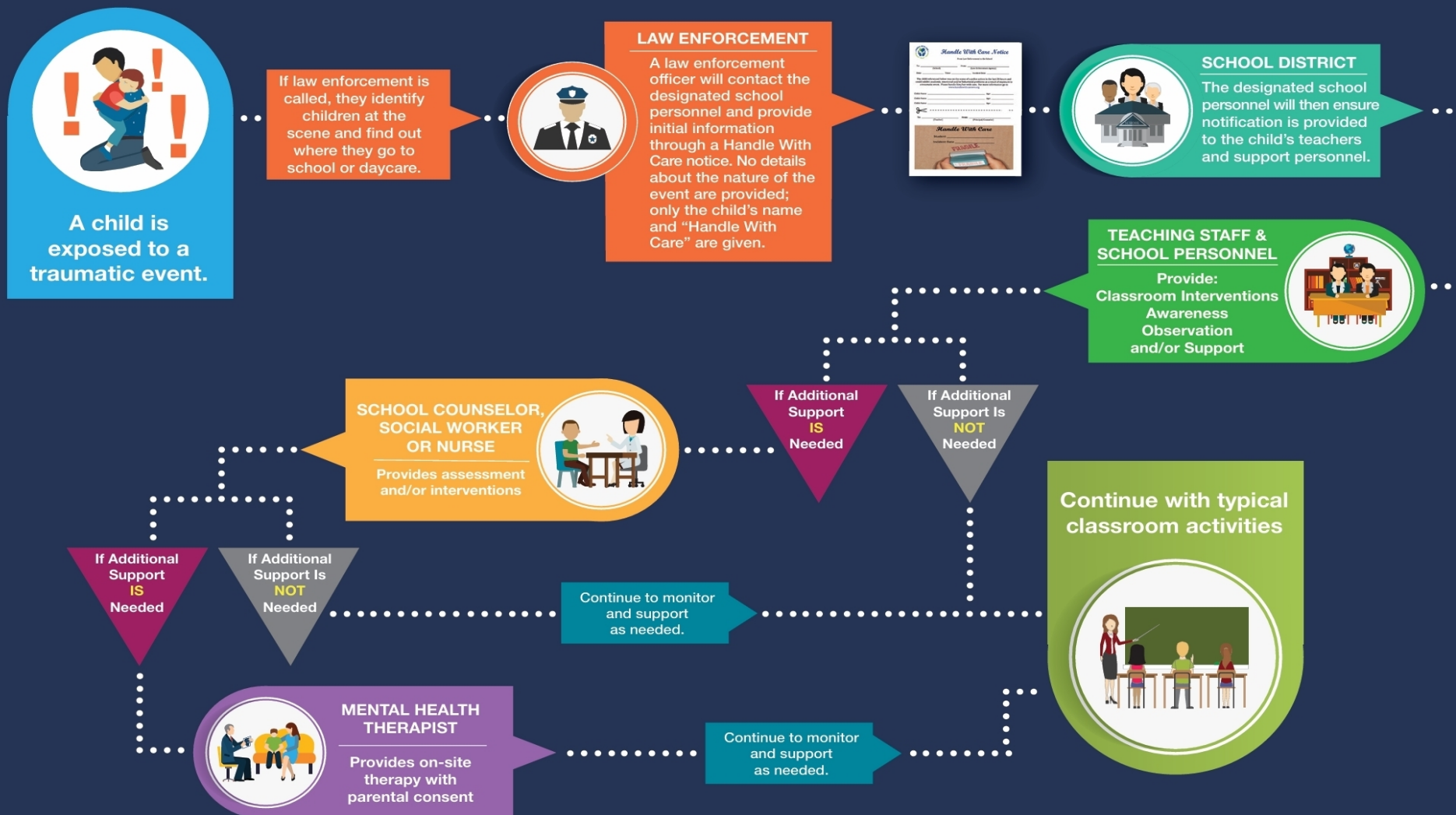
What do I do after getting notice?

- **BE AWARE**
- **A NOTICE DOES NOT MEAN ACTION IS REQUIRED**
- Monitor the child to identify if support is needed:
 - Support can be: move test dates, offer breaks, naps or someone to talk to.



HANDLE WITH CARE

Process Flow Chart





Questions?