



Oak Park Elementary School District 97

970 Madison ▪ Oak Park ▪ Illinois ▪ 60302 ▪ ph: 708.524.3000 ▪ fax: 708.524.3019 ▪ www.op97.org

TO: Dr. Albert G. Roberts, Superintendent of Schools

FROM: Therese M. O'Neill, Asst. Supt. Finance & Operations

SUBJECT: Final Cost Estimates – Playgrounds for Summer 2013

DATE: January 8, 2013

The construction documents were received (electronically) by me on December 21, 2013 from Altamanu and have been forwarded on to the members of FAC (Facility Advisory Committee) for review, comment and possible revisions. FAC will be meeting on Monday, January 7, 2013 so, at the meeting on January 8, 2013, should there be any significant recommendations for revision, I will be able to report to the Board at that time. These construction documents have been included with this document for Board review.

Attached are the formalized cost estimates, in summary, for each of the four schools:

Hatch –	Base Bid:	\$253,863.06
	Rubberized Surface:	\$132,678.00
	Alternate 1H:	\$ 1,492.45
Mann -	Base Bid:	\$285,789.30
	Rubberized Surface:	\$129,381.00
	Alternate 4M:	\$ 16,990.05
	Alternate 5M:	\$ 13,200.00
Whittier -	Base Bid:	\$255,954.25
	Rubberized Surface:	\$164,850.00
	Alternate 6W:	\$ 24,819.30
	Alternate 7W:	TBD
Irving -	Base Bid:	\$840,423.32
	Rubberized Surface:	\$143,220.00
	Alternate 1: Base:	\$715,638.07
	Rubberized Surface:	\$143,220.00
	Alternate 2: Base:	\$1,111,139.12
	Rubberized Surface:	\$ 150,150.00

Line 34 of the cost estimates for all scenarios for Irving currently has no value but that number will be known and presented Tuesday evening.

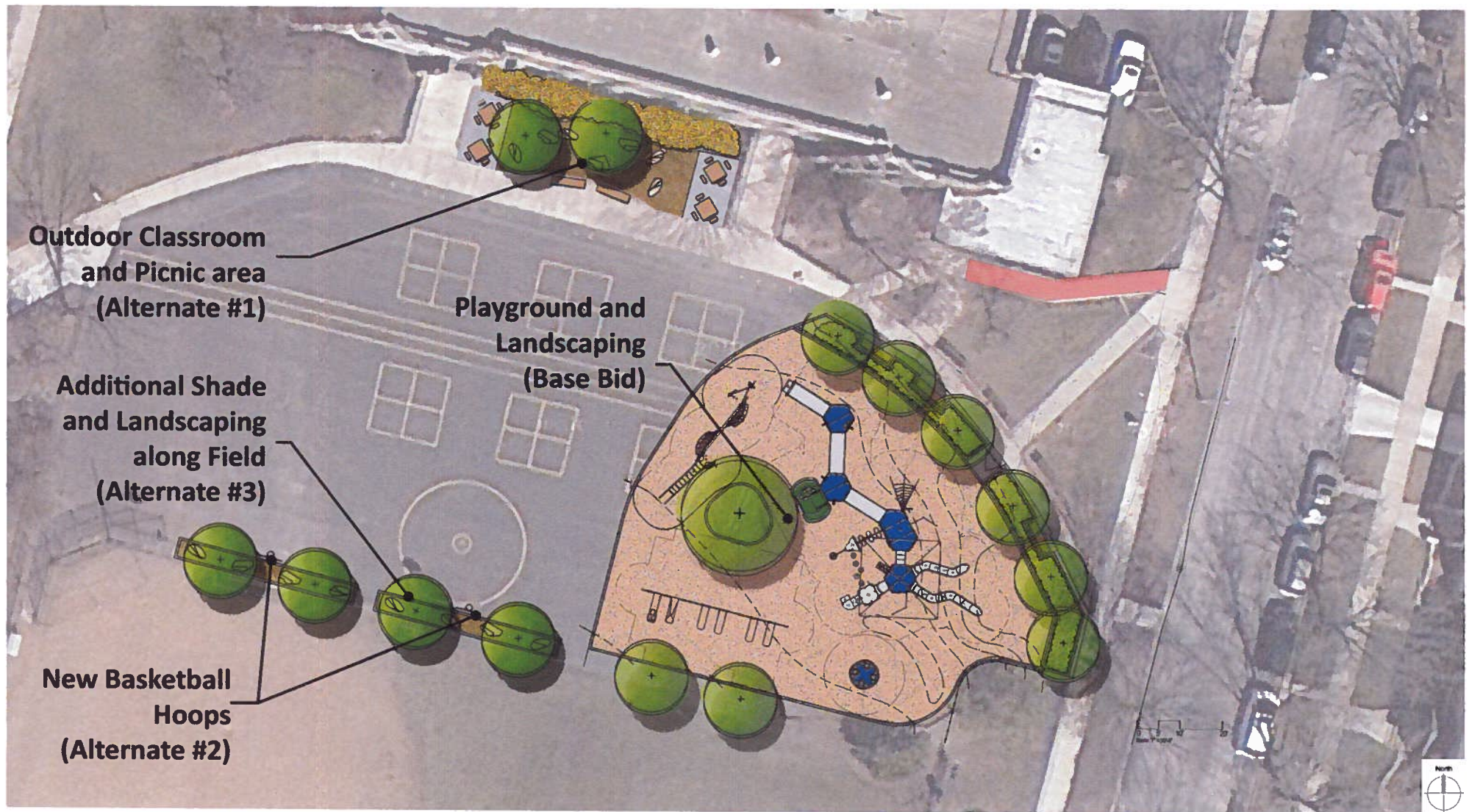
We will be seeking authority to proceed with letting this work at the January 22, 2013 meeting. With this authority, it is intended to let bids commencing with January 28 and returned by February 13 with first review by the Board at its February 26 meeting and approval at the March 19 meeting. This timetable will afford the successful contractor sufficient time to order materials and equipment as well as provide the firm the ability to mobilize work crews so work can commence immediately upon the close of school, anticipated on Thursday, May 30, with successful completion of all work prior to school commencing in late August, 2013.

Should there be any questions about the content of this memorandum, having questions prior to the meeting on January 8 would be helpful so I can provide complete responses at the meeting.

tmo

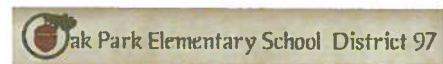
attachments

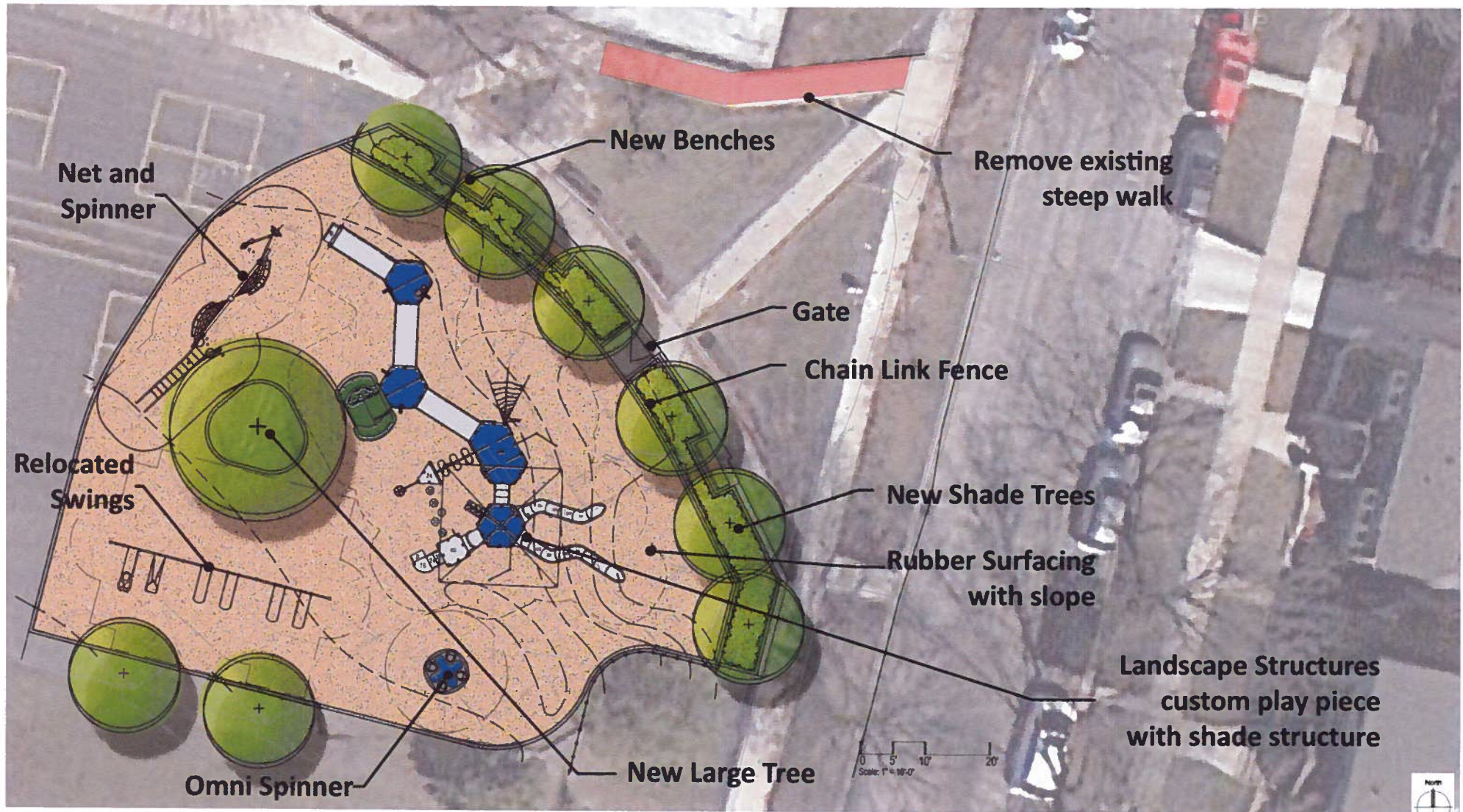
attachments



11.06.2012

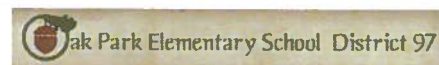
Hatch Elementary School Oak Park District 97





11.06.2012

Hatch Elementary School Oak Park District 97



School District 97 Playground Improvements

2-Jan-13

	Item	Unit	Qty	Unit Price	Total
--	------	------	-----	------------	-------

HATCH ELEMENTARY SCHOOL

Removals and Site Preparation

1	Site Preparation, mobilization, construction fencing, construction entrance, bonding costs	LS	1	\$5,750.00	\$5,750.00
2	Tree Protection Fencing Supply and Install	LF	460	\$5.00	\$2,300.00
3	Furnish, install and maintain erosion control measures	LS	1	\$600.00	\$600.00
4	Sawcut Pavement	LF	125	\$10.00	\$1,250.00
4	Remove and haul off existing concrete pavement	SY	30	\$30.00	\$900.00
5	Remove and haul off existing asphalt pavement	SY	290	\$30.00	\$8,700.00
6	Remove and haul off timbers	LF	435	\$9.50	\$4,132.50
6	Remove existing benches/pads/footings	EACH	2	\$250.00	\$500.00
7	Remove and haul off mulch in existing playground	SY	570	\$7.50	\$4,275.00
8	Remove and haul off playground equipment, foundations, playground surface, etc.	LS	1	\$5,000.00	\$5,000.00
9	Remove existing swings, store for relocation	LS	1	\$1,500.00	\$1,500.00
10	Root Prune trees performed by a Certified Arborist/Tree Surgeon as identified on the drawings prior to construction activities	LF	50	\$10.00	\$500.00
	Subtotal Removals and Site Preparation				\$35,407.50

Site Grading and Excavation

11	Perform all grading and excavation to obtain sub grades for pavement and other grading requirements as shown or noted on the Plans and in accordance with the specifications	LS	1	\$5,400.00	\$5,400.00
12	Transitional grading from edge of walk or curb to existing surface after walk installation	LS	1	\$1,200.00	\$1,200.00
	Subtotal Site Grading and Excavation				\$6,600.00

Paving and Surface

13	Furnish and install concrete walk, including site furnishing pads as shown on the drawings. (see eng detail)	SF	265	\$6.50	\$1,722.50
14	Furnish and install asphalt patch as shown on the drawings. (see eng detail)	SY	25	\$50.00	\$1,250.00
15	Furnish and install 6" curbs as shown on the drawings. (see eng detail)	LF	510	\$18.00	\$9,180.00
16	Repaint lines for blacktop games and line up circles	LS	1	\$1,000.00	\$1,000.00
	Subtotal Paving and Surface				\$13,152.50

Playground Equipment

17	Apparatus: Furnish and install Landscape Structures <u>NET CLIMBER (2650)</u> as shown and noted on the plan and in play equipment schedule.	EA	1	\$19,103.00	\$19,103.00
18	Apparatus: Furnish and install Landscape Structures <u>OMNI SPINNER</u> as shown and noted on the plan and in play equipment schedule.	EA	1	\$8,330.00	\$8,330.00
19	Apparatus: Furnish and install Landscape Structures <u>CUSTOM PLAY EQUIPMENT</u> as shown and noted on the plan and in play equipment schedule.	EA	1	\$119,238.00	\$119,238.00
20	Apparatus: Reinstall <u>EXISTING LANDSCAPE STRUCTURES SWINGS</u> noted on the plan and in play equipment schedule. Refurbish and repaint as needed	EA	1	\$3,000.00	\$3,000.00
	Subtotal Apparatus Area				\$149,671.00

	Item	Unit	Qty	Unit Price	Total
--	------	------	-----	------------	-------

HATCH ELEMENTARY SCHOOL

Site Furniture and Fencing

21	Furnish and install 8' IPE backed benches	EA	3	\$1,900.00	\$5,700.00
22	Wave Bike Rack on existing pavement	EA	1	\$900.00	\$900.00
23	Furnish and install 4' ht chain link fence as shown on plans.	LF	160	\$50.00	\$8,000.00
24	Furnish and install 4' ht chain link fence 4' wide gate as shown on plans.	EA	1	\$400.00	\$400.00
	<u>Subtotal Site Furniture</u>				\$15,000.00

Site Landscape Plantings

25	Furnish and install 3" Catalpa Shade Tree	EA	1	\$663.08	\$663.08
26	Furnish and install 3" London Planetree Shade Tree	EA	3	\$621.08	\$1,863.24
27	Furnish and install 3" Swamp White Oak Shade Tree	EA	3	\$609.00	\$1,827.00
28	Furnish and install 8" Elm Shade Tree	EA	1	\$3,300.00	\$3,300.00
29	Furnish and install #5 Container Green Mound Alpine Currant	EA	56	\$40.63	\$2,275.28
30	Furnish and install hardwood mulch in planted areas	SY	75	\$7.00	\$525.00
31	Prune existing trees as needed	LS	1	\$500.00	\$500.00
	<u>Subtotal Site Landscape Plantings</u>				\$10,953.60

	Total for base bld Improvements - Hatch Elementary				\$230,784.60
	10% Contingency				\$23,078.46
	GRAND TOTAL FOR BASE BID - HATCH ELEMENTARY SCHOOL				<u>\$253,863.06</u>

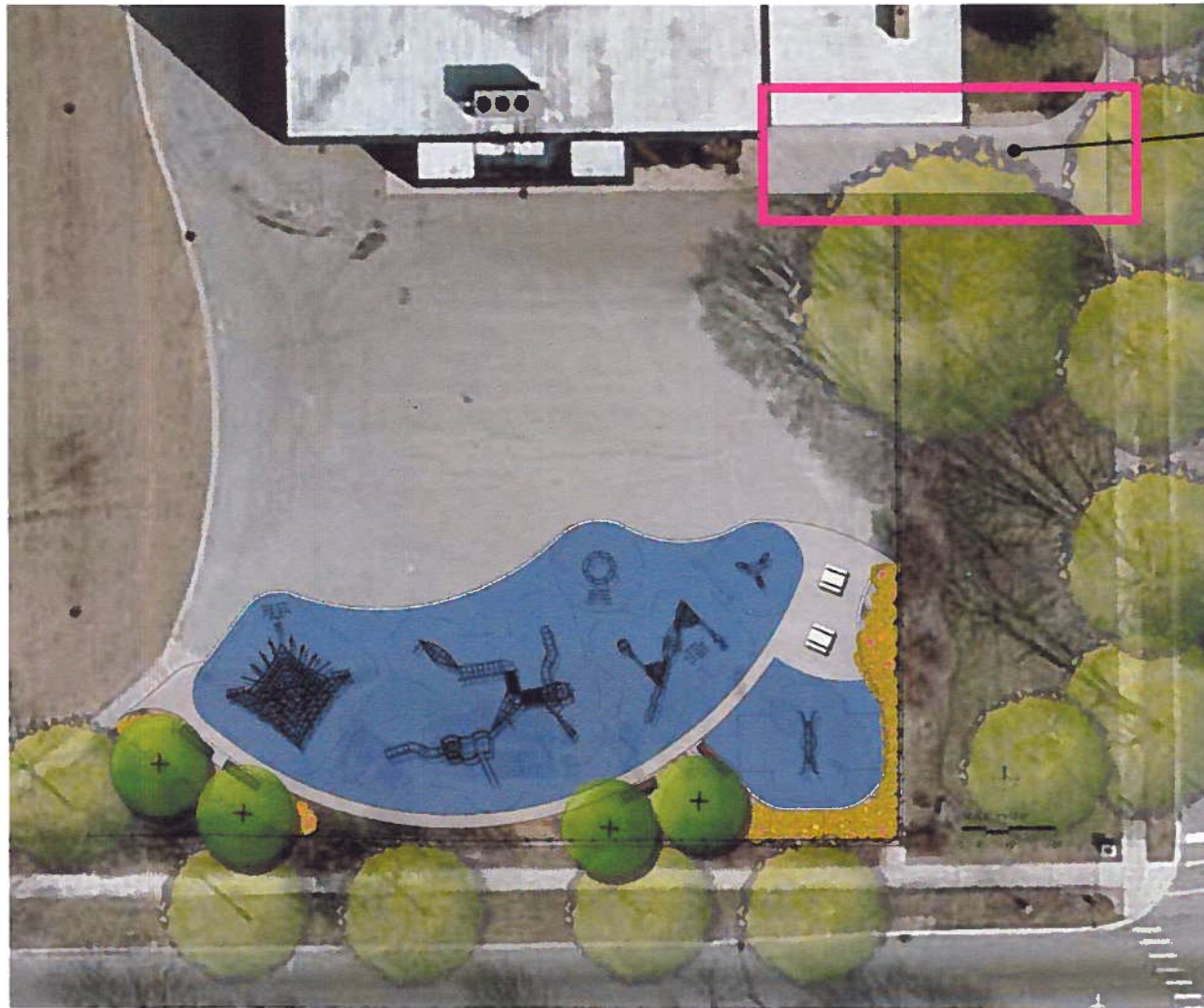
ALTERNATE #1H - Village of Oak Park Sidewalk removal/replacement

32	Remove and haul off existing sidewalk	SF	113	\$5.00	\$565.00
33	Furnish and install 5" thick walk to Village Standards (see eng detail)	SF	113	\$6.50	\$734.50
	TOTAL FOR ALTERNATE #1H - VOP Sidewalk				\$1,299.50
	10% Contingency				\$129.95
	GRAND TOTAL FOR ALTERNATE #1H				<u>\$1,429.45</u>

PLAYGROUND RUBBER SURFACING

34	Furnish and install concrete base to receive synthetic rubber surfacing at all playground surfaces	SF	6,318	\$7.00	\$44,226.00
35	Furnish and install synthetic rubber surfacing at all playground surfaces	SF	6,318	\$14.00	\$88,452.00
	TOTAL FOR PLAYGROUND SURFACING				\$132,678.00

PLAYGROUND CONCEPT PLAN

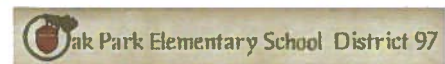


ALTERNATE



11.06.2012

Mann Elementary School
Oak Park District 97



School District 97 Playground Improvements

2-Jan-13

	Item	Unit	Qty	Unit Price	Total
--	------	------	-----	------------	-------

MANN ELEMENTARY SCHOOL

Removals and Site Preparation

1	Site Preparation, mobilization, construction fencing, construction entrance, bonding costs	LS	1	\$3,750.00	\$3,750.00
2	Tree Protection Fencing Supply and Install	LF	245	\$5.00	\$1,225.00
3	Furnish, install and maintain erosion control measures	LS	1	\$2,075.00	\$2,075.00
4	Sawcut Pavement	LF	175	\$10.00	\$1,750.00
5	Remove and haul off existing concrete pavement	SY	32	\$30.00	\$960.00
6	Remove and haul off existing asphalt pavement	SY	370	\$30.00	\$11,100.00
7	Remove and haul off existing 8-6.12 curb & gutter	LF	135	\$15.00	\$2,025.00
8	Remove and haul off existing catch basin	EACH	1	\$400.00	\$400.00
9	Remove and haul off existing 8" pvc storm	LF	30	\$20.00	\$600.00
10	Remove existing benches/pads/footings	EACH	4	\$250.00	\$1,000.00
11	Remove and haul off mulch in existing playground	SY	640	\$7.50	\$4,800.00
12	Remove and haul off playground equipment, foundations, playground surface, etc.	LS	1	\$5,000.00	\$5,000.00
13	Root prune existing trees as shown on plans	LF	60	\$12.00	\$720.00
14	Selective trimming/pruning of existing hedge	LS	1	\$500.00	\$500.00
	Subtotal Removals and Site Preparation				\$35,905.00

Site Grading and Excavation

15	Perform all grading and excavation to obtain sub grades for pavement and other grading requirements as shown or noted on the Plans and in accordance with the specifications	LS	1	\$3,200.00	\$3,200.00
16	Transitional grading from edge of walk or curb to existing surface after walk installation	LS	1	\$1,200.00	\$1,200.00
	Subtotal Site Grading and Excavation				\$4,400.00

Paving and Surface

17	Furnish and install concrete walk, including site furnishing pads as shown on the drawings. (see eng detail)	SF	1207	\$6.50	\$7,845.50
18	Furnish and install asphalt patch as shown on the drawings. (see eng detail)	SY	44	\$50.00	\$2,200.00
19	Furnish and install 6" curbs as shown on the drawings. (see eng detail)	LF	195	\$18.00	\$3,510.00
20	Repaint lines for blacktop games and line up circles	LS	1	\$1,000.00	\$1,000.00
	Subtotal Paving and Surface				\$14,555.50

Utilities and Drainage

21	Furnish and install 48" catch basin	EA	1	\$2,400.00	\$2,400.00
22	Furnish and install 8" PVC Type SDR 26	LF	60	\$15.00	\$900.00
	Subtotal Utilities and Drainage				\$3,300.00

Playground Equipment

	Item	Unit	Qty	Unit Price	Total
--	------	------	-----	------------	-------

MANN ELEMENTARY SCHOOL

23	Apparatus: Furnish and install Kompan <u>BLAZER ELE400021</u> as shown and noted on the plan and in play equipment schedule.	EA	1	\$3,143.00	\$3,143.00
24	Apparatus: Furnish and install Kompan <u>Supernova GXY944</u> as shown and noted on the plan and in play equipment schedule.	EA	1	\$8,793.54	\$8,793.54
25	Apparatus: Furnish and install Kompan <u>GXY942</u> as shown and noted on the plan and in play equipment schedule.	EA	1	\$44,037.00	\$44,037.00
26	Apparatus: Furnish and install Kompan <u>ELE5900296</u> as shown and noted on the plan and in play equipment schedule.	EA	1	\$71,340.50	\$71,340.50
27	Apparatus: Furnish and install Kompan <u>CLASSIC DOME COR8842</u> as shown and noted on the plan and in play equipment schedule.	EA	1	\$46,480.00	\$46,480.00
28	Apparatus: Furnish and install Landscape Structures <u>LS Oodle Swing</u> as shown and noted on the plan and in play equipment schedule.	EA	1	\$5,908.00	\$5,908.00
	<u>Subtotal Playground Equipment</u>				\$179,702.04

Site Furniture and Fencing

29	Furnish and install 8' IPE backed benches	EA	4	\$1,900.00	\$7,600.00
30	Precast concrete picnic tables	EA	2	\$1,560.00	\$3,120.00
31	Furnish and install 4' ht chain link fence as shown on plans.	LF	10	\$50.00	\$500.00
32	Furnish and install 6' ht chain link fence as shown on plans.	EA	5	\$60.00	\$300.00
	<u>Subtotal Site Furniture</u>				\$11,520.00

Site Landscape Plantings

33	Furnish and install 3" Quaking Aspen Tree	EA	4	\$579.08	\$2,316.32
34	Furnish and install 5' HT Blue Heaven Juniper	EA	1	\$232.58	\$232.58
35	Furnish and install 36" ht. Aronia melanocarpa "Iroquois Beauty"	EA	20	\$68.78	\$1,375.60
36	Furnish and install #3 Cont. Itea virginica "Little Henry"	EA	28	\$47.78	\$1,337.84
37	Furnish and install 36" ht. Physocarpus opulifolius "Summer Wine"	EA	3	\$57.23	\$171.69
38	Furnish and install 36" ht. Viburnum "Blue Muffin"	EA	20	\$57.23	\$1,144.60
39	Furnish and install #1 Cont. Allium "Summer Beauty"	EA	14	\$11.88	\$166.32
40	Furnish and install #1 Cont. Bouteloua curtipendula	EA	14	\$13.75	\$192.50
41	Furnish and install #1 Cont. Panicum virgatum 'Northwind'	EA	8	\$14.38	\$115.04
42	Furnish and install #1 Cont. Schizachyrium scoparium	EA	9	\$14.38	\$129.42
43	Furnish and install hardwood mulch in planted areas	SY	92	\$7.00	\$644.00
44	Furnish and install topsoil as shown on details	CY	52	\$50.00	\$2,600.00
	<u>Subtotal Site Landscape Plantings</u>				\$10,425.91

	Total for base bid Improvements - Mann Elementary				\$259,808.45
	10% Contingency				\$25,980.85
	GRAND TOTAL FOR BASE BID - MANN ELEMENTARY SCHOOL				<u>\$285,789.30</u>

	Item	Unit	Qty	Unit Price	Total
--	------	------	-----	------------	-------

MANN ELEMENTARY SCHOOL

ALTERNATE #4M - New Entry

45	Remove existing tree	EA	1	\$400.00	\$400.00
46	Furnish and install silt fence	LF	85	\$3.50	\$297.50
47	Furnish and install 8' ht construction fence	LF	171	\$10.00	\$1,710.00
48	Sawcut pavement	LF	51	\$10.00	\$510.00
49	Remove and haul off existing concrete pavement	SY	58	\$30.00	\$1,740.00
50	Remove and haul off existing asphalt pavement	SY	36	\$30.00	\$1,080.00
51	Remove existing chain link fence, posts and foundations	LF	12	\$10.00	\$120.00
52	Furnish and install concrete walk as shown on drawings	SF	1352	\$6.50	\$8,788.00
53	Furnish and install asphalt patch as shown on drawings	SY	8	\$50.00	\$400.00
54	Furnish and install chain link fence	LF	10	\$40.00	\$400.00
	TOTAL FOR ALTERNATE #4M - New Entry at Mann				\$15,445.50
	10% Contingency				\$1,544.55
	<u>GRAND TOTAL FOR ALTERNATE #4M</u>				<u>\$16,990.05</u>

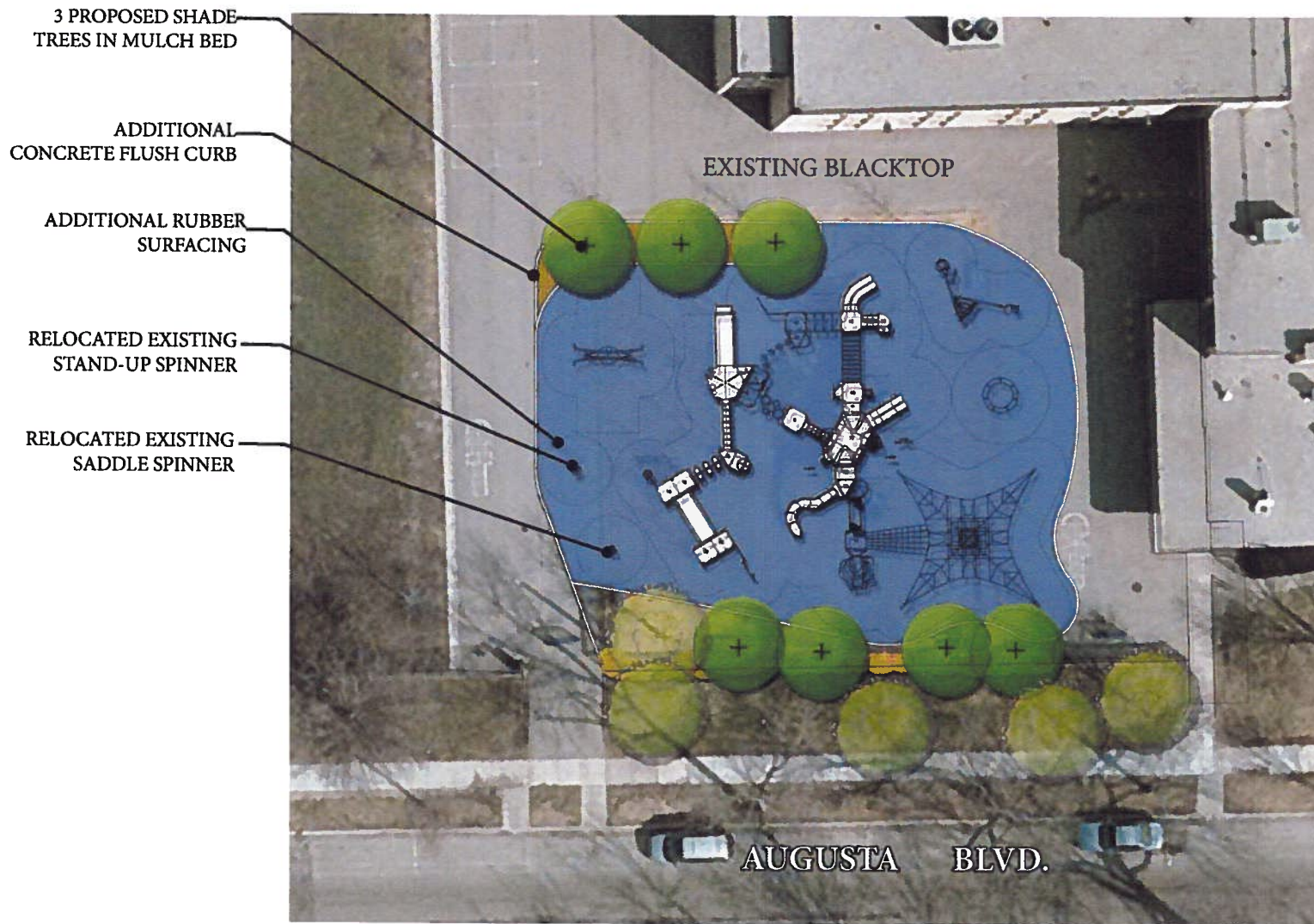
ALTERNATE #5M - Trash Enclosure

55	Furnish and install 8' ht construction fence	LF	195	\$10.00	\$1,950.00
56	Remove and haul off existing trash enclosure fence, posts and foundations	LF	56	\$30.00	\$1,680.00
57	Furnish and install pavement patches where existing foundations were located	LS	1	\$500.00	\$500.00
58	Sawcut existing asphalt for new concrete pad	LF	60	\$10.00	\$600.00
59	Remove and haul off existing asphalt pavement and base	SY	39	\$40.00	\$1,560.00
60	Furnish and install concrete pad for trash enclosure	SY	28	\$70.00	\$1,960.00
61	Furnish and install 6' H chain link fence	LF	55	\$50.00	\$2,750.00
62	Furnish and install 5' W x 6'H chain link gate	EA	1	\$350.00	\$350.00
63	Furnish and install asphalt patch as shown on drawings	SY	13	\$50.00	\$650.00
	TOTAL FOR ALTERNATE #5M - New Entry at Mann				\$12,000.00
	10% Contingency				\$1,200.00
	<u>GRAND TOTAL FOR ALTERNATE #5M</u>				<u>\$13,200.00</u>

PLAYGROUND RUBBER SURFACING


64	Furnish and install concrete base to receive synthetic rubber surfacing at all playground surfaces	SF	6,161	\$7.00	\$43,127.00
65	Furnish and install synthetic rubber surfacing at all playground surfaces	SF	6,161	\$14.00	\$86,254.00
	TOTAL FOR PLAYGROUND SURFACING				\$129,381.00

5 - 10 PLAYGROUND CONCEPT PLAN



11. 13. 2012

Whittier Elementary School
Oak Park District 97

 Oak Park Elementary School District 97

 **Manhard**
CONSULTING

Altamanu Inc. 

School District 97 Playground Improvements

2-Jan-13

	Item	Unit	Qty	Unit Price	Total
--	------	------	-----	------------	-------

WHITTIER ELEMENTARY SCHOOL

Removals and Site Preparation

1	Site Preparation, mobilization, construction fencing, construction entrance, bonding costs	LS	1	\$4,630.00	\$4,630.00
2	Tree Protection Fencing Supply and Install	LF	375	\$5.00	\$1,875.00
3	Remove Small Trees 8" caliper or smaller and grind stump to depth of 12"	EA	5	\$500.00	\$2,500.00
4	Furnish and install silt fence	LF	305	\$3.50	\$1,067.50
5	Furnish, install and maintain other erosion control measures	LS	1	\$600.00	\$600.00
6	Sawcut Pavement (including North concrete for garden space)	LF	326	\$10.00	\$3,260.00
7	Remove and haul off existing concrete pavement	SY	108	\$30.00	\$3,240.00
8	Remove and haul off existing asphalt pavement	SY	315	\$30.00	\$9,450.00
9	Remove and haul off timbers and plastic edging around play surfaces	LF	351	\$8.00	\$2,808.00
10	Remove existing bench (store, to be relocated)	EACH	1	\$250.00	\$250.00
11	Remove and dispose of existing benches and footings	EACH	6	\$250.00	\$1,500.00
12	Remove and haul off mulch in 5-12 year old playground	SY	748	\$7.50	\$5,610.00
13	Remove and stockpile mulch in 2-5 year old playground	SY	105	\$6.00	\$630.00
14	Remove and haul off playground equipment, foundations, playground surface, etc.	LS	1	\$5,000.00	\$5,000.00
15	Remove existing fence and footings	LF	18	\$25.00	\$450.00
16	Remove and haul off existing concrete ramp (2-5 playground)	SY	5	\$30.00	\$150.00
17	Root Prune trees performed by a Certified Arborist/Tree Surgeon as identified on the drawings prior to construction activities	LF	20	\$10.00	\$200.00
	Subtotal Removals and Site Preparation				\$43,220.50

Site Grading and Excavation

18	Perform all grading and excavation to obtain sub grades for pavement and other grading requirements as shown or noted on the Plans and in accordance with the specifications	LS	1	\$6,400.00	\$6,400.00
19	Transitional grading from edge of walk or curb to existing surface after walk installation	LS	1	\$1,200.00	\$1,200.00
	Subtotal Site Grading and Excavation				\$7,600.00

Paving and Surface

20	Furnish and install concrete walk, including site furnishing pads as shown on the drawings. (see eng detail)	SF	657	\$6.50	\$4,270.50
21	Furnish and install asphalt patch as shown on the drawings. (see eng detail)	SY	65	\$30.00	\$1,950.00
22	Furnish and install 3" mulch in planting bed areas. (see specifications)	SY	170	\$7.00	\$1,190.00
23	Furnish and install 6" flush curb as shown on the drawings. (see eng detail)	LF	561	\$24.00	\$13,464.00
24	Repaint lines for blacktop games and line up circles	LS	1	\$1,000.00	\$1,000.00
	Subtotal Paving and Surface				\$21,874.50

Playground Equipment

25	Apparatus: Furnish and install Kompan <u>SUPERNOVA GXY944</u> as shown and noted on the plan and in play equipment schedule.	EA	1	\$8,739.54	\$8,739.54
----	--	----	---	------------	------------

	Item	Unit	Qty	Unit Price	Total
--	------	------	-----	------------	-------

WHITTIER ELEMENTARY SCHOOL

26	Apparatus: Furnish and install Kompan <u>Nereide GXY937</u> as shown and noted on the plan and in play equipment schedule.	EA	1	\$25,452.00	\$25,452.00
27	Apparatus: Furnish and install Landscape Structures <u>CUSTOM PLAY EQUIPMENT</u> as shown and noted on the plan and in play equipment schedule.	EA	1	\$106,106.14	\$106,106.14
28	Apparatus: Furnish and install Landscape Structures <u>OODLE SWING</u> noted on the plan and in play equipment schedule.	EA	1	\$5,908.00	\$5,908.00
29	Apparatus: Reinstall <u>EXISTING SADDLE SPINNER</u> noted on the plan and in play equipment schedule.	EA	1	\$400.00	\$400.00
30	Apparatus: Reinstall <u>EXISTING STAND UP SPINNER</u> noted on the plan and in play equipment schedule.	EA	1	\$500.00	\$500.00
31	Clean and repaint existing play equipment as needed	LS	1	\$2,500.00	\$2,500.00
	<u>Subtotal Apparatus Area</u>				\$149,605.68

Site Furniture and Fencing

32	Reinstall existing bench in 2-5 year old playground area	LS	1	\$500.00	\$500.00
33	Furnish and install 4' ht chain link fence as shown on plans.	LF	45	\$50.00	\$2,250.00
34	Furnish and install 4' ht chain link fence 8' wide double leaf gate as shown on plans.	EA	1	\$800.00	\$800.00
35	Furnish and install 4' ht chain link fence 4' wide gate as shown on plans.	EA	1	\$400.00	\$400.00
36	Repair and paint existing chain link fence	LS	1	\$2,000.00	\$2,000.00
	<u>Subtotal Site Furniture</u>				\$5,950.00

Site Landscape Plantings

37	Furnish and install prepared topsoil for planting bed areas	CY	67	\$50.00	\$3,350.00
38	Furnish and install sod as shown on drawings	SY	78	\$7.50	\$585.00
39	Prune existing trees	LS	1	\$500.00	\$500.00
	<u>Subtotal Site Landscape Plantings</u>				\$4,435.00

	Total for base bid Improvements - Whittier Elementary				\$232,685.68
	10% Contingency				\$23,268.57
	GRAND TOTAL FOR BASE BID - WHITTIER ELEMENTARY SCHOOL				<u>\$255,954.25</u>

ALTERNATE #6W - GROUP SWING AT 2-5 PLAYGROUND

40	Perform grading and excavation to obtain sub grades for pavement	LS	1	\$800.00	\$800.00
41	Perform transitional grading from edge of walk or curb to existing surface after walk installation	LS	1	\$400.00	\$400.00
42	Furnish and install 5" thick walk, including site furnishing pads as shown on drawings	SF	40	\$6.50	\$260.00
43	Concrete base to receive synthetic rubber surfacing	SF	620	\$7.00	\$4,340.00
44	Synthetic rubber surfacing	SF	620	\$14.00	\$8,680.00
45	Furnish and install 6" flush curb	LF	92	\$24.00	\$2,208.00
46	Deduct 6" flush curb to be installed as part of base bid	LF	17	\$24.00	\$408.00

	Item	Unit	Qty	Unit Price	Total
--	------	------	-----	------------	-------

WHITTIER ELEMENTARY SCHOOL

47	Furnish and install Landscape Structures OODLE SWING 2-5 Year Old	EA	1	\$5,908.00	\$5,908.00
48	Furnish and install new sod	SY	50	\$7.50	\$375.00
	TOTAL FOR ALTERNATE #6W - GROUP SWING AT 2-S PLAY				\$22,563.00
	10% Contingency				\$2,256.30
	<u>GRAND TOTAL FOR ALTERNATE #6W</u>				<u>\$24,819.30</u>

ALTERNATE #7W - WATER SUPPLY FOR GARDEN SPACE

49	Furnish and install Yard Hydrant Woodford Model Y95 or approved equivalent	EA	1	\$600.00	\$600.00
50	Reduced Pressure Zone, enclosure and all required material	EA	1	\$450.00	\$450.00
51	Water service pipe, trench, backfill, patching and all other required items. Contractor to provide unit price. Routing of water service to be determined based on where District 97 can provide a building stub.	LS	TBD	TBD	TBD
	<u>GRAND TOTAL FOR ALTERNATE #7W - WATER SUPPLY</u>				TBD

PLAYGROUND RUBBER SURFACING

52	Furnish and install concrete base to receive synthetic rubber surfacing at all playground surfaces	SF	7,850	\$7.00	\$54,950.00
53	Furnish and install synthetic rubber surfacing at all playground surfaces	SF	7,850	\$14.00	\$109,900.00
	TOTAL FOR PLAYGROUND SURFACING				\$164,850.00

Irving Elementary Base Bid





Irving Elementary Base Bid Opinion of Probable Costs:

Refurbished Parking Lot:

Alternate II Mill and Relay Existing Parking Lot, New Fence & Concrete Trash Enclosure	\$81,240
---	-----------------

180 FT x 114 FT Field:

REMOVALS & EXCAVATION	\$280,370.00
ARTIFICIAL SURFACING	\$209,847.40
DRAINAGE & UTILITIES	\$105,755.00
NEW TREES & TOPSOIL	\$18,200.00
NEW FENCE	\$23,400.00
SUBTOTAL	\$637,572.40
10% CONTINGENCY	\$63,757.24
TOTAL FOR FIELD	\$701,329.64

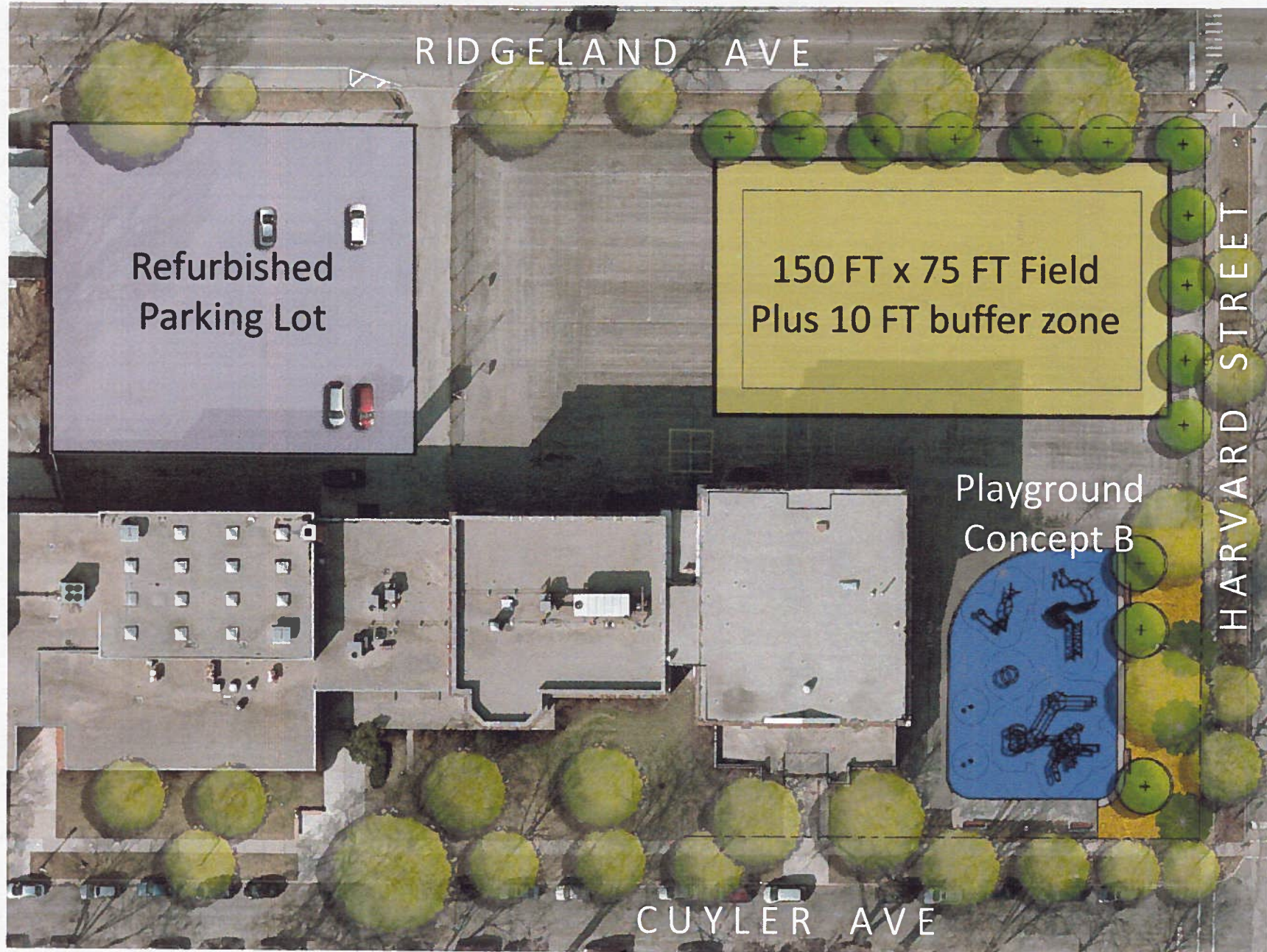
New Playground (Concept B):

REMOVALS	\$19,800
SITE GRADING, EXCAVATION, DRAINAGE & UTILITIES:	\$10,500
ASPHALT AND CONC. WALK	\$27,450
PLAY EQUIPMENT & RUBBER SURFACE	\$272,080
SITE FURNITURE & LANDSCAPES	\$18,872
SUBTOTAL	\$348,702
10% CONTINGENCY	\$34,870
TOTAL FOR IRVING SCHOOL PLAYGROUND IMPROVEMENTS	\$383,572

Irving Elementary Base Bid Opinion of Probable Cost: \$1,166,141.64

Add add'l \$160,000 for sport lighting

Alternate 1:





Alternate 1 Opinion of Probable Costs:

Refurbished Parking Lot:

Alternate II Mill and Relay Existing Parking Lot, New Fence & Concrete Trash Enclosure	\$81,240
---	-----------------

150 FT x 75 FT Field:

REMOVALS & EXCAVATION	\$230,950
ARTIFICIAL SURFACING	\$130,008
DRAINAGE & UTILITIES	\$68,562
NEW TREES & TOPSOIL	\$24,300
NEW FENCE	\$21,450
SUBTOTAL	\$475,270
10% CONTINGENCY	\$47,527
TOTAL FOR FIELD	\$522,797

New Playground (Concept B):

REMOVALS	\$19,800
SITE GRADING, EXCAVATION, DRAINAGE & UTILITIES:	\$10,500
ASPHALT AND CONC. WALK	\$27,450
PLAY EQUIPMENT & RUBBER SURFACE	\$272,080
SITE FURNITURE & LANDSCAPES	\$18,872
SUBTOTAL	\$348,702
10% CONTINGENCY	\$34,870
TOTAL FOR IRVING SCHOOL PLAYGROUND IMPROVEMENTS	\$383,572

Alternate 1 Opinion of Probable Costs:

\$987,609

Add add'l \$160,000 for sport lighting

Alternate 2:





Alternate 2 Opinion of Probable Costs:

Parking Lot (new):

REMOVALS & EXCAVATION	\$25,550.00
GRADING	\$6,000.00
DRAINAGE & UTILITIES	\$16,000.00
NEW PAVING, CURB AND GUTTER	\$60,031.25
NEW FENCE	\$14,300.00
NEW TREES, SOIL AND SOD	\$24,900.00
SUBTOTAL	\$146,781.25
10% CONTINGENCY	\$14,678.13
TOTAL FOR PARKING LOT	\$161,459.38

180 FT x 114 FT Field:

REMOVALS & EXCAVATION	\$280,370.00
ARTIFICIAL SURFACING	\$209,847.40
DRAINAGE & UTILITIES	\$105,755.00
NEW SHRUBS & TOPSOIL	\$7,056.00
NEW FENCE	\$23,400.00
RELOCATED TRASH	\$8,000.00
SUBTOTAL	\$634,428.40
10% CONTINGENCY	\$63,442.84
TOTAL FOR FIELD	\$697,871.24

New Playground (Concept B):

REMOVALS	\$56,050.00
SITE GRADING, EXCAVATION, DRAINAGE & UTILITIES	\$13,000.00
ASPHALT AND CONCRETE WALK	\$27,450.00
PLAY EQUIPMENT & RUBBER SURFACE	\$272,080.00
SITE FURNITURE & LANDSCAPES	\$23,471.00
NEW FENCE	\$14,300.00
SUBTOTAL	\$406,351.00
10% CONTINGENCY	\$40,635.10
TOTAL FOR PLAYGROUND	\$446,986.10

Alternate 2 Opinion of Probable Costs:

\$1,306,316.72

Add add'l \$160,000 for sport lighting

Item	Unit	Qty	Unit Price	Total
------	------	-----	------------	-------

IRVING ELEMENTARY SCHOOL - Base BID

Removals and Site Preparation

1	Construction Entrance	EA	1	\$1,500.00	\$1,500.00
2	Tree Protection Fencing Supply and Install	LF	307	\$5.00	\$1,535.00
3	Furnish and install silt fence	LF	560	\$3.50	\$1,960.00
4	Furnish and install inlet protection	EA	11	\$200.00	\$2,200.00
5	Furnish and install 8' high Chain link construction fence	LF	833	\$10.00	\$8,330.00
6	Sawcut Pavement	LF	930	\$10.00	\$9,300.00
7	Remove and haul off existing concrete pavement	SY	125	\$30.00	\$3,750.00
8	Remove and haul off concrete curb & gutter	LF	407	\$30.00	\$12,210.00
9	Remove and haul off existing asphalt pavement	SY	3550	\$30.00	\$106,500.00
10	Remove and haul off timbers	LF	146	\$9.50	\$1,387.00
11	Remove and haul off existing catch basin	EACH	1	\$750.00	\$750.00
12	Remove and haul off existing chain link fence, posts and foundations	LF	460	\$25.00	\$11,500.00
13	Remove and haul off existing benches and pads	EACH	4	\$250.00	\$1,000.00
14	Remove and haul off mulch	SY	1080	\$7.50	\$8,100.00
15	Remove and haul off playground equipment, foundations, playground surface, etc.	LS	1	\$10,000.00	\$10,000.00
	Subtotal Removals and Site Preparation				\$180,022.00

Tree Root Pruning

16	Root Prune trees performed by a Certified Arborist/Tree Surgeon as identified on the drawings prior to construction activities	LF	60	\$10.00	\$600.00
----	--	----	----	---------	----------

Site Grading and Excavation

17	Perform all grading and excavation to obtain sub grades for pavement and other grading requirements as shown or noted on the Plans and in accordance with the specifications	LS	1	\$12,600.00	\$12,600.00
18	Transitional grading from edge of walk or curb to existing surface after walk installation	LS	1	\$12,000.00	\$12,000.00
	Subtotal Site Grading and Excavation				\$24,600.00

Paving and Surface

19	Furnish and install 5" Thick walk, including site furnishing pads as shown on the drawings. (see eng detail)	SF	2300	\$6.50	\$14,950.00
20	Furnish and install 8" Thick concrete as shown on the drawings. (see eng detail)	SF	187	\$9.00	\$1,683.00
21	Furnish and install asphalt patch as shown on the drawings. (see eng detail)	SY	390	\$50.00	\$19,500.00
22	Furnish and install 3" mulch shown on the drawings. (see specifications)	SY	744	\$9.00	\$6,696.00
23	Furnish and install monolithic concrete curb as shown on the drawings. (see eng detail)	LF	205	\$21.00	\$4,305.00
24	Furnish and install 6" flush curb as shown on the drawings. (see eng detail)	LF	715	\$15.00	\$10,725.00
25	Furnish and install 6" non flush curb as shown on the drawings. (see eng detail)	LF	150	\$18.00	\$2,700.00
26	Furnish and install impermeable liner as shown on the drawings (see eng detail)	SF	25480	\$1.50	\$38,220.00
27	Furnish and install removable panel for manhole under field (see eng detail)	EA	1	\$450.00	\$450.00
28	Furnish and install nailer board (see eng detail)	LF	655	\$8.00	\$5,240.00
29	Furnish and install synthetic turf field	SF	25480	\$5.00	\$127,400.00
30	Furnish, install and fine grade min 6" Vulcan 210 aggregate base course (see eng detail)	SY	2831	\$5.00	\$14,155.00
31	Pavement Markings in parking area	LS	1	\$400.00	\$400.00
32	Mill and Relay 2" asphalt surface	SY	1850	\$22.00	\$40,700.00
33	Leveling Binder (Machine Course), N 50	Ton	106	\$85.00	\$9,010.00
34	Full Depth Concrete Patch in mill area - 8" CA-6, 4" Asphalt Binder Course N50 (Surface Course included in item directly above). Quantity to be measured in field by engineer.	SY	TBD		TBD
	Subtotal Paving and Surface				\$296,134.00

Utilities

35	48" Catch Basin, including riser, half trap & trench backfill	EA	5	\$2,400.00	\$12,000.00
36	Furnish and install 18" Reinforced Concrete Pipe, including trench backfill	LF	427	\$24.00	\$10,248.00
37	Furnish and install 8" PVC pipe SDR 26	LF	39	\$15.00	\$585.00
38	Furnish and install ADS Advanedge 1"x12" drains and all associated appertances to connect the Advanedge pipes to the sewer mains (see eng details)	LF	1,210	\$12.00	\$14,520.00
	Subtotal Utilities				\$37,353.00

	Item	Unit	Qty	Unit Price	Total
--	------	------	-----	------------	-------

IRVING ELEMENTARY SCHOOL - Base BID

Apparatus Area

39	Apparatus: Furnish and install Kompan STELLA NOVA GXY244 as shown and noted on the plan and in play equipment schedule.	EA	1	\$9,770.60	\$9,770.60
40	Apparatus: Furnish and install Kompan PERFORMER DOME COR8842 as shown and noted on the plan and in play equipment schedule.	EA	1	\$46,230.80	\$46,230.80
41	Apparatus: Furnish and install Kompan COROCORD PACKAGE PAK-10/2 as shown and noted on the plan and in play equipment schedule.	EA	1	\$16,928.80	\$16,928.80
42	Apparatus: Furnish and install Landscape Structures CUSTOM PLAY (CODE:OAK12IRV8C) noted on the plan and in play equipment schedule.	EA	1	\$85,687.00	\$85,687.00
43	Apparatus: Furnish and install Landscape Structures OMNISPIN SPINNER noted on the plan and in play equipment schedule.	EA	1	\$8,330.00	\$8,330.00
44	Apparatus: Furnish and install Landscape Structures SNACK SHACK noted on the plan and in play equipment schedule.	EA	1	\$6,692.00	\$6,692.00
	Subtotal Apparatus Area				\$173,639.20

Site Furniture

45	Furnish and Install 8' long backless IPE bench (surface mount) as shown on plans.	EA	1	\$967.40	\$967.40
46	Furnish and Install 8' long backed IPE bench (surface mount) as shown on plans.	EA	2	\$1,660.40	\$3,320.80
47	Furnish and install star bench (small)	EA	4	\$1,204.00	\$4,816.00
48	Furnish and install trash enclosure fence	LF	45	\$100.00	\$4,500.00
49	Furnish and install fence around synthetic field	LF	400	\$75.00	\$30,000.00
50	Furnish and install 4' ht. chain link fence gate (single)	EA	1	\$500.00	\$500.00
51	Furnish and install 4' ht. chain link fence gate (double single)	EA	1	\$1,000.00	\$1,000.00
	Subtotal Site Furniture				\$45,104.20

Site Landscape Plantings

52	Populus tremuloides, 2" CAL.	EA	4	\$378.00	\$1,512.00
53	Ulmus 'Accolade', 3" CAL	EA	5	\$516.08	\$2,580.38
54	Crataegus crusgalli var. inermis, 3" CAL	EA	3	\$400.58	\$1,201.73
55	Amelanchier x grandiflora 'Autumn Brilliance', 48" HT.	EA	2	\$157.50	\$315.00
56	Cornus racemosa. 48" HT.	EA	3	\$51.98	\$155.93
57	Hamamelis vernalis, 48" HT.	EA	1	\$182.70	\$182.70
58	Itea virginica 'Little Henry', #3 CONT.	EA	13	\$47.78	\$621.08
	Subtotal Site Landscape Plantings				\$6,568.80

TOTAL FOR BASE BID				\$764,021.20
10% CONTINGENCY				\$76,402.12
GRAND TOTAL FOR BASE BID - IRVING ELEMENTARY SCHOOL				\$840,423.32

PLAYGROUND RUBBER SURFACING

Furnish and install concrete base to receive synthetic rubber surfacing at all playground surfaces	SF	6,200	\$7.00	\$43,400.00
Furnish and install synthetic rubber surfacing at all playground surfaces	SF	6,200	\$14.00	\$86,800.00
TOTAL				\$130,200.00
10% CONTINGENCY				\$13,020.00
GRAND TOTAL FOR RUBBER SURFACING - IRVING ELEMENTARY SCHOOL				\$143,220.00

GRAND TOTAL FOR BASE BID INCLUDING RUBBER SURFACING- IRVING ELEMENTARY SCHOOL				\$983,643.32
--	--	--	--	---------------------

All items not listed shall be considered incidental to the contract.

Item	Unit	Qty	Unit Price	Total
------	------	-----	------------	-------

IRVING ELEMENTARY SCHOOL - Alternate 1

Removals and Site Preparation

1	Construction Entrance	EA	1	\$1,500.00	\$1,500.00
2	Tree Protection Fencing Supply and Install	LF	307	\$5.00	\$1,535.00
3	Furnish and install silt fence	LF	535	\$3.50	\$1,872.50
4	Furnish and install inlet protection	EA	10	\$200.00	\$2,000.00
5	Furnish and install 8" high Chain link construction fence	LF	833	\$10.00	\$8,330.00
6	Sawcut Pavement	LF	1045	\$10.00	\$10,450.00
7	Remove and haul off existing concrete pavement	SY	125	\$30.00	\$3,750.00
8	Remove and haul off concrete curb & gutter	LF	381	\$30.00	\$11,430.00
9	Remove and haul off existing asphalt pavement	SY	2550	\$30.00	\$76,500.00
10	Remove and haul off timbers	LF	0	\$8.00	\$0.00
11	Remove and haul off existing catch basin	EACH	1	\$750.00	\$750.00
12	Remove and haul off existing chain link fence, posts and foundations	LF	435	\$25.00	\$10,875.00
13	Remove and haul off existing benches and pads	EACH	4	\$250.00	\$1,000.00
14	Remove and haul off mulch	SY	1080	\$7.50	\$8,100.00
15	Remove and haul off playground equipment, foundations, playground surface, etc.	LS	1	\$10,000.00	\$10,000.00
Subtotal Removals and Site Preparation					\$148,092.50

Tree Root Pruning

16	Root Prune trees performed by a Certified Arborist/Tree Surgeon as identified on the drawings prior to construction activities	LF	60	\$10.00	\$600.00
----	--	----	----	---------	----------

Site Grading and Excavation

17	Perform all grading and excavation to obtain sub grades for pavement and other grading requirements as shown or noted on the Plans and in accordance with the specifications	LS	1	\$11,800.00	\$11,800.00
18	Transitional grading from edge of walk or curb to existing surface after walk installation	LS	1	\$12,000.00	\$12,000.00
Subtotal Site Grading and Excavation					\$23,800.00

Paving and Surface

19	Furnish and install 5" Thick walk, including site furnishing pads as shown on the drawings. (see eng detail)	SF	2400	\$6.50	\$15,600.00
20	Furnish and install 8" Thick concrete as shown on the drawings. (see eng detail)	SF	187	\$9.00	\$1,683.00
21	Furnish and install asphalt patch as shown on the drawings. (see eng detail)	SY	275	\$50.00	\$13,750.00
22	Furnish and install 3" mulch shown on the drawings. (see specifications)	SY	744	\$9.00	\$6,696.00
23	Furnish and install monolithic concrete curb as shown on the drawings. (see eng detail)	LF	205	\$21.00	\$4,305.00
24	Furnish and install 6" flush curb as shown on the drawings. (see eng detail)	LF	590	\$15.00	\$8,850.00
25	Furnish and install 6" non flush curb as shown on the drawings. (see eng detail)	LF	195	\$18.00	\$3,510.00
26	Furnish and install impermeable liner as shown on the drawings (see eng detail)	SF	16150	\$1.50	\$24,225.00
27	Furnish and install removable panel for manhole under field (see eng detail)	EA	1	\$450.00	\$450.00
28	Furnish and install nailer board (see eng detail)	LF	530	\$8.00	\$4,240.00
29	Furnish and install synthetic turf field	SF	16150	\$5.00	\$80,750.00
30	Furnish, install and fine grade min 6" Vulcan 210 aggregate base course (see eng detail)	SY	1795	\$5.00	\$8,975.00
31	Pavement Markings in parking area	LS	1	\$400.00	\$400.00
32	Mill and Relay 2" asphalt surface	SY	1850	\$22.00	\$40,700.00
33	Leveling Binder (Machine Course), N 50	Ton	106	\$85.00	\$9,010.00
34	Full Depth Concrete Patch in mill area - 8" CA-6, 4" Asphalt Binder Course N50 (Surface Course included in item directly above). Quantity to be measured in field by engineer.	SY	TBD		TBD
Subtotal Paving and Surface					\$223,144.00

Utilities

35	48" Catch Basin, including riser, half trap & trench backfill	EA	4	\$2,400.00	\$9,600.00
36	Furnish and install 18" Reinforced Concrete Pipe, including trench backfill	LF	335	\$24.00	\$8,040.00
37	Furnish and install 8" PVC pipe SDR 26	LF	41	\$15.00	\$615.00
38	Furnish and install ADS Advanedge 1"x12" drains and all associated appertances to connect the Advanedge pipes to the sewer mains (see eng details)	LF	750	\$12.00	\$9,000.00
Subtotal Utilities					\$27,255.00

Apparatus Area

39	Apparatus: Furnish and install Kompan <u>STELLA NOVA GXY244</u> as shown and noted on the plan and in play equipment schedule.	EA	1	\$9,770.60	\$9,770.60
40	Apparatus: Furnish and install Kompan <u>PERFORMER DOME COR8842</u> as shown and noted on the plan and in play equipment schedule.	EA	1	\$46,230.80	\$46,230.80
41	Apparatus: Furnish and install Kompan <u>COROCORD PACKAGE PAK-10/2</u> as shown and noted on the plan and in play equipment schedule.	EA	1	\$16,928.80	\$16,928.80
42	Apparatus: Furnish and install Landscape Structures <u>CUSTOM PLAY</u> (CODE:OAK12IRV8C) noted on the plan and in play equipment schedule.	EA	1	\$85,687.00	\$85,687.00
43	Apparatus: Furnish and install Landscape Structures <u>OMNISPIN SPINNER</u> noted on the plan and in play equipment schedule.	EA	1	\$8,330.00	\$8,330.00
44	Apparatus: Furnish and install Landscape Structures <u>SNACK SHACK</u> noted on the plan and in play equipment schedule.	EA	1	\$6,692.00	\$6,692.00
	Subtotal Apparatus Area				\$173,639.20

Site Furniture

45	Furnish and install 8' long backless IPE bench (surface mount) as shown on plans.	EA	1	\$967.40	\$967.40
46	Furnish and install 8' long backed IPE bench (surface mount) as shown on plans.	EA	2	\$1,660.40	\$3,320.80
47	Furnish and install star bench (small)	EA	4	\$1,204.00	\$4,816.00
48	Furnish and install trash enclosure fence	LF	45	\$100.00	\$4,500.00
49	Furnish and install fence around synthetic field	LF	400	\$75.00	\$30,000.00
50	Furnish and install 4' ht. chain link fence gate (single)	EA	1	\$500.00	\$500.00
51	Furnish and install 4' ht. chain link fence gate (double single)	EA	1	\$1,000.00	\$1,000.00
	Subtotal Site Furniture				\$45,104.20

Site Landscape Plantings

52	Celtis occidentalis, 3" CAL	EA	3	\$453.08	\$1,359.23
53	Populus tremuloides, 2" CAL	EA	4	\$378.00	\$1,512.00
54	Ulmus 'Accolade', 3" CAL	EA	5	\$516.08	\$2,580.38
55	Crataegus crusgalli var. inermis, 3" CAL	EA	3	\$400.58	\$1,201.73
56	Syringa pekinensis 'China Snow', 3" CAL	EA	3	\$642.08	\$1,926.23
57	Amelanchier x grandiflora 'Autumn Brilliance', 48" HT.	EA	2	\$157.50	\$315.00
58	Cornus racemosa, 48" HT.	EA	3	\$51.98	\$155.93
59	Hamamelis vernalis, 48" HT.	EA	1	\$182.70	\$182.70
60	Itea virginica 'Little Henry', #3 CONT.	EA	13	\$47.78	\$621.08
	Subtotal Site Landscape Plantings				\$9,854.25

TOTAL FOR ALTERNATE 1				\$651,489.15
10% CONTINGENCY				\$65,148.92
GRAND TOTAL FOR ALTERNATE 1- IRVING ELEMENTARY SCHOOL				\$716,638.07

PLAYGROUND RUBBER SURFACING

Furnish and install concrete base to receive synthetic rubber surfacing at all playground surfaces	SF	6,200	\$7.00	\$43,400.00
Furnish and install synthetic rubber surfacing at all playground surfaces	SF	6,200	\$14.00	\$86,800.00
TOTAL				\$130,200.00
10% CONTINGENCY				\$13,020.00
GRAND TOTAL FOR RUBBER SURFACING - IRVING ELEMENTARY SCHOOL				\$143,220.00

GRAND TOTAL FOR ALTERNATE 1 INCLUDING RUBBER SURFACING- IRVING ELEMENTARY SCHOOL				\$859,858.07
---	--	--	--	---------------------

All items not listed shall be considered incidental to the contract.

Item	Unit	Qty	Unit Price	Total
------	------	-----	------------	-------

IRVING ELEMENTARY SCHOOL - Alternate 2

Removals and Site Preparation

1	Construction Entrance	EA	1	\$1,500.00	\$1,500.00
2	Tree Protection Fencing Supply and Install	LF	307	\$5.00	\$1,535.00
3	Remove Trees 8" caliper or larger and grind stump to depth of 12"	EA	2	\$500.00	\$1,000.00
4	Furnish and install silt fence	LF	455	\$3.50	\$1,592.50
5	Furnish and install inlet protection	EA	9	\$200.00	\$1,800.00
6	Furnish and install 8" high Chain link construction fence	LF	890	\$10.00	\$8,900.00
7	Sawcut Pavement	LF	610	\$10.00	\$6,100.00
8	Remove and haul off existing concrete pavement	SY	196	\$30.00	\$5,880.00
9	Remove and haul off concrete curb & gutter	LF	486	\$30.00	\$14,580.00
10	Remove and haul off existing asphalt pavement	SY	5550	\$30.00	\$166,500.00
11	Remove and haul off timbers	LF	50	\$8.00	\$400.00
12	Remove and haul off existing catch basin	EACH	2	\$750.00	\$1,500.00
13	Remove and haul off existing chain link fence, posts and foundations	LF	785	\$6.00	\$4,710.00
14	Remove and haul off existing benches and pads	EACH	4	\$250.00	\$1,000.00
15	Remove and haul off mulch	SY	1080	\$7.50	\$8,100.00
16	Remove and haul off playground equipment, foundations, playground surface, etc.	LS	1	\$10,000.00	\$10,000.00
Subtotal Removals and Site Preparation					\$235,097.50

Tree Root Pruning

17	Root Prune trees performed by a Certified Arborist/Tree Surgeon as identified on the drawings prior to construction activities	LF	60	\$10.00	\$600.00
----	--	----	----	---------	----------

Site Grading and Excavation

18	Perform all grading and excavation to obtain sub grades for pavement and other grading requirements as shown or noted on the Plans and in accordance with the specifications	LS	1	\$18,000.00	\$18,000.00
19	Transitional grading from edge of walk or curb to existing surface after walk installation	LS	1	\$15,000.00	\$15,000.00
Subtotal Site Grading and Excavation					\$33,000.00

Paving and Surface

20	Furnish and install 5" Thick walk, including site furnishing pads as shown on the drawings. (see eng detail)	SF	3500	\$6.50	\$22,750.00
21	Furnish and install 8" Thick concrete as shown on the drawings. (see eng detail)	SF	710	\$9.00	\$6,390.00
22	Furnish and install asphalt patch as shown on the drawings. (see eng detail)	SY	1440	\$50.00	\$72,000.00
23	Furnish and install 3" mulch shown on the drawings. (see specifications)	SY	1500	\$9.00	\$13,500.00
24	Furnish and install monolithic concrete curb as shown on the drawings. (see eng detail)	LF	176	\$21.00	\$3,696.00
25	Furnish and install 6" flush curb as shown on the drawings. (see eng detail)	LF	690	\$15.00	\$10,350.00
26	Furnish and install 6" non flush curb as shown on the drawings. (see eng detail)	LF	305	\$18.00	\$5,490.00
27	Furnish and install impermeable liner as shown on the drawings (see eng detail)	SF	25480	\$1.50	\$38,220.00
28	Furnish and install removable panel for manhole under field (see eng detail)	EA	0	\$450.00	\$0.00
29	Furnish and install nailer board (see eng detail)	LF	655	\$8.00	\$5,240.00
30	Furnish and install synthetic turf field	SF	25480	\$5.00	\$127,400.00
31	Furnish, install and fine grade min 6" Vulcan 210 aggregate base course (see eng detail)	SY	25480	\$5.00	\$127,400.00
32	Pavement Markings in parking area	LS	1	\$300.00	\$300.00
33	Mill and Relay 2" asphalt surface	SY	0	\$22.00	\$0.00
34	Leveling Binder (Machine Course), N 50	Ton	0	\$85.00	\$0.00
35	Full Depth Concrete Patch in mill area - 8" CA-6, 4" Asphalt Binder Course N50 (Surface Course included in item directly above). Quantity to be measured in field by engineer.	SY	TBD		TBD
Subtotal Paving and Surface					\$432,736.00

Utilities

36	48" Catch Basin, including riser, half trap & trench backfill	EA	4	\$2,400.00	\$9,600.00
37	Furnish and install 18" Reinforced Concrete Pipe, including trench backfill	LF	439	\$24.00	\$10,536.00
38	Furnish and install 8" PVC pipe SDR 26	LF	41	\$15.00	\$615.00
39	Furnish and install ADS Advanedge 1"x12" drains and all associated appertances to connect the Advanedge pipes to the sewer mains (see eng details)	LF	1,210	\$12.00	\$14,520.00
Subtotal Utilities					\$35,271.00

Apparatus Area

40	Apparatus: Furnish and Install Kompan STELLA NOVA GKY944 as shown and noted on the plan and in play equipment schedule.	EA	1	\$9,770.60	\$9,770.60
41	Apparatus: Furnish and Install Kompan PERFORMER DOME COR8842 as shown and noted on the plan and in play equipment schedule.	EA	1	\$46,230.80	\$46,230.80
42	Apparatus: Furnish and Install Kompan COROCORD PACKAGE PAK-10/2 as shown and noted on the plan and in play equipment schedule.	EA	1	\$16,928.80	\$16,928.80
43	Apparatus: Furnish and Install Landscape Structures CUSTOM PLAY (CODE:OAK12IRV8C) noted on the plan and in play equipment schedule.	EA	1	\$85,687.00	\$85,687.00
44	Apparatus: Furnish and Install Landscape Structures QMNISPIN SPINNER noted on the plan and in play equipment schedule.	EA	1	\$8,330.00	\$8,330.00
45	Apparatus: Furnish and Install Landscape Structures SNACK SHACK noted on the plan and in play equipment schedule.	EA	1	\$6,692.00	\$6,692.00
	Subtotal Apparatus Area				\$173,639.20

Site Furniture

46	Furnish and Install 8' long backed IPE bench (surface mount) as shown on plans.	EA	3	\$1,660.40	\$4,981.20
47	Furnish and Install star bench (small)	EA	4	\$1,204.00	\$4,816.00
48	Furnish and install star bench (LARGE)	EA	1	\$1,568.00	\$1,568.00
49	Furnish and install trash enclosure fence	LF	110	\$100.00	\$11,000.00
50	Furnish and install fence around synthetic field	LF	600	\$75.00	\$45,000.00
51	Furnish and install 4' ht. chain link fence gate (double single)	EA	1	\$1,000.00	\$1,000.00
	Subtotal Site Furniture				\$68,365.20

Site Landscape Plantings

52	<i>Catalpa speciosa</i> , 3" CL.		10	\$663.08	\$6,630.75
53	<i>Celtis occidentalis</i> , 3" CAL.		3	\$630.00	\$1,890.00
54	<i>Melasequoia glyptostroboides</i> , 3" CAL.		2	\$1,050.00	\$2,100.00
55	<i>Platanus 'Exclamation'</i> , 3" CAL.		3	\$621.08	\$1,863.23
56	<i>Populus tremuloides</i> , 2" CAL.		6	\$378.00	\$2,268.00
57	<i>Crataegus crusgalli</i> var. <i>inermis</i> , 3" Cal.		3	\$400.58	\$1,201.73
58	<i>Amelanchier x grandiflora 'Autumn Brilliance'</i> , 48" ht.		3	\$157.50	\$472.50
59	<i>Aronia melanocarpa 'Iraqis Beauty'</i> , 36" ht.		40	\$68.78	\$2,751.00
60	<i>Comus racemosa</i> , 48" ht.		7	\$51.98	\$363.83
61	<i>Corylus americana</i> , 42" ht.		1	\$66.68	\$66.68
62	<i>Hamamelis vernalis</i> , 48" ht.		1	\$182.70	\$182.70
63	<i>Itea virginica 'Little Henry'</i> , #3 cont.		20	\$47.78	\$955.50
64	<i>Viburnum 'Blue Muffin'</i> , 36" ht.		3	\$57.23	\$171.68
65	<i>Allium 'Summer Beauty'</i> , quart		105	\$10.00	\$1,050.00
66	<i>Bouteloua curtipendula</i> , quart		210	\$10.00	\$2,100.00
67	<i>Echinacea pallida</i> , quart		105	\$10.00	\$1,050.00
68	<i>Panicum virgatum 'Northwind'</i> , quart		105	\$10.00	\$1,050.00
69	<i>Panicum virgatum 'Shenadoah'</i> , quart		315	\$10.00	\$3,150.00
70	<i>Schizachyrium scoparium</i> , quart		105	\$10.00	\$1,050.00
71	<i>Solidago rugosa 'Fireworks'</i> , quart		105	\$10.00	\$1,050.00
	Subtotal Site Landscape Plantings				\$31,417.58

TOTAL FOR ALTERNATE 2				\$1,010,126.48
10% CONTINGENCY				\$101,012.65
GRAND TOTAL FOR ALTERNATE 2- IRVING ELEMENTARY SCHOOL				\$1,111,139.12

PLAYGROUND RUBBER SURFACING

Furnish and install concrete base to receive synthetic rubber surfacing at all playground surfaces	SF	6,500	\$7.00	\$45,500.00
Furnish and install synthetic rubber surfacing at all playground surfaces	SF	6,500	\$14.00	\$91,000.00
TOTAL				\$136,500.00
10% CONTINGENCY				\$13,650.00
GRAND TOTAL FOR RUBBER SURFACING - IRVING ELEMENTARY SCHOOL				\$150,150.00

GRAND TOTAL FOR ALTERNATE 2 INCLUDING RUBBER SURFACING-IRVING ELEMENTARY SCHOOL				\$1,261,289.12
--	--	--	--	-----------------------

All items not listed shall be considered incidental to the contract.