



December 12, 2025

TO: Beaverton School District Board of Directors
FR: Dan Goldman, Superintendent of Northwest Regional Education Service District
RE: The 2026-27 Local Service Plan

Colleagues:

It's my pleasure to present the 2026-27 Local Service Plan. As your education service district partner, our goal is to connect school districts to services and resources that might otherwise be out of reach or unaffordable. In the pages that follow, I hope you get a sense of our existing and potential partnership opportunities to support your school district's students.

Our strategic plan, created in collaboration with the school districts in our service area, outlines a shared vision that every student is educated, equipped and inspired to achieve their full potential and enrich their communities. Through our special educators, technology staff, early learning educators, professional learning team, and many more specialists throughout our organization, we humbly offer our services in pursuit of this vision.

It's a pleasure to work alongside you and your educational staff.

In partnership,

A handwritten signature in blue ink, consisting of a stylized 'D' and 'G' connected by a horizontal line.

Dan Goldman, Superintendent

Supplementary Materials: Attached with this cover letter, you'll find the Proposed 2026-27 Local Service Plan which includes Summaries of Grant and Value-Add Services; Presentation Slides which include a District Profile with current services; a Proposed Resolution; and the 2026-27 LSP Timeline.

Proposed Motion: "BE IT Resolved, the Board of Directors adopts the 2026-27 Local Service Plan as presented."



Northwest Regional
Education Service District



2026-27 Local Service Plan

A framework for our partnership with school districts in
Clatsop, Columbia, Tillamook and Washington counties

Table of Contents

Local Service Plan

- About the Local Service Plan 3
 - Service Area 4
 - Board of Directors 5
 - Key Management 6
 - Timeline for Plan Development 7
 - How the Local Service Plan is Funded..... 8
- Core Services 9
- Menu Services 12
 - Administration 13
 - Early Learning 14
 - Instruction 15
 - K-12 Special Education..... 17
 - Technology..... 21
- Student Success Act Technical Assistance Plan 23

Appendix

- Proposed Resolution Authorizing NWRESD Local Service Plan for 2026-27 27
- Grant Funded & Value-Add Services 28



Cover photo: A preschooler plays with a leaf at our Hillsboro Early Childhood Center. This child attended our Better Together classes, where children of all abilities learn and play side-by-side. Better Together classes are available to preschoolers in Astoria, Beaverton, Hillsboro, St. Helens, Tillamook and Tualatin.



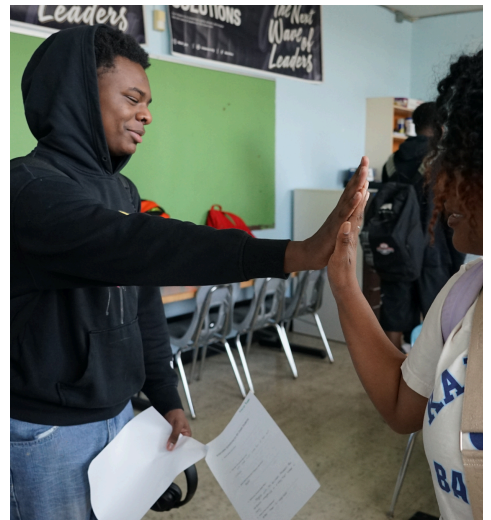
About the Local Service Plan

Oregon requires its 19 education service districts to submit a local service plan each year reflecting their state-mandated mission “to assist school districts and the Department of Education in achieving Oregon’s educational goals by providing equitable, high-quality, cost-effective and locally responsive educational services at a regional level.”

The local service plan is the framework for how we serve our 20 partner school districts in Clatsop,

Columbia, Tillamook and Washington counties. According to ORS 334.175, the local service plan must address special education services, technology support, school improvement services, and administrative services.

It must be approved by at least two thirds of our partner school district boards, representing at least 50% of the total number of students enrolled in our service area.

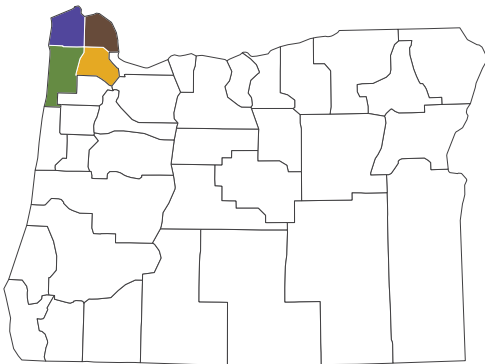


Getting more students on track to graduate starts much earlier than senior year. Through our 9th Grade Success Network, schools rethink their practices and adjust their systems so more students obtain six credits by the end of their freshman year -- setting them up for success.

Raeya, then a sophomore at Astoria High School, with her freshman transitions teacher Candace Chapman. Jackie, then a senior at Southridge High School in Beaverton, a 9th Grade Success Network student intern. Knowyn, then a freshman at Beaverton High School, a student who successfully recovered credits after accessing several of the school's on-track supports.



Service Area



Clatsop County

SD #1	Astoria
SD #8	Jewell
SD #4	Knappa
SD #10	Seaside
SD #30	Warrenton-Hammond

Columbia County

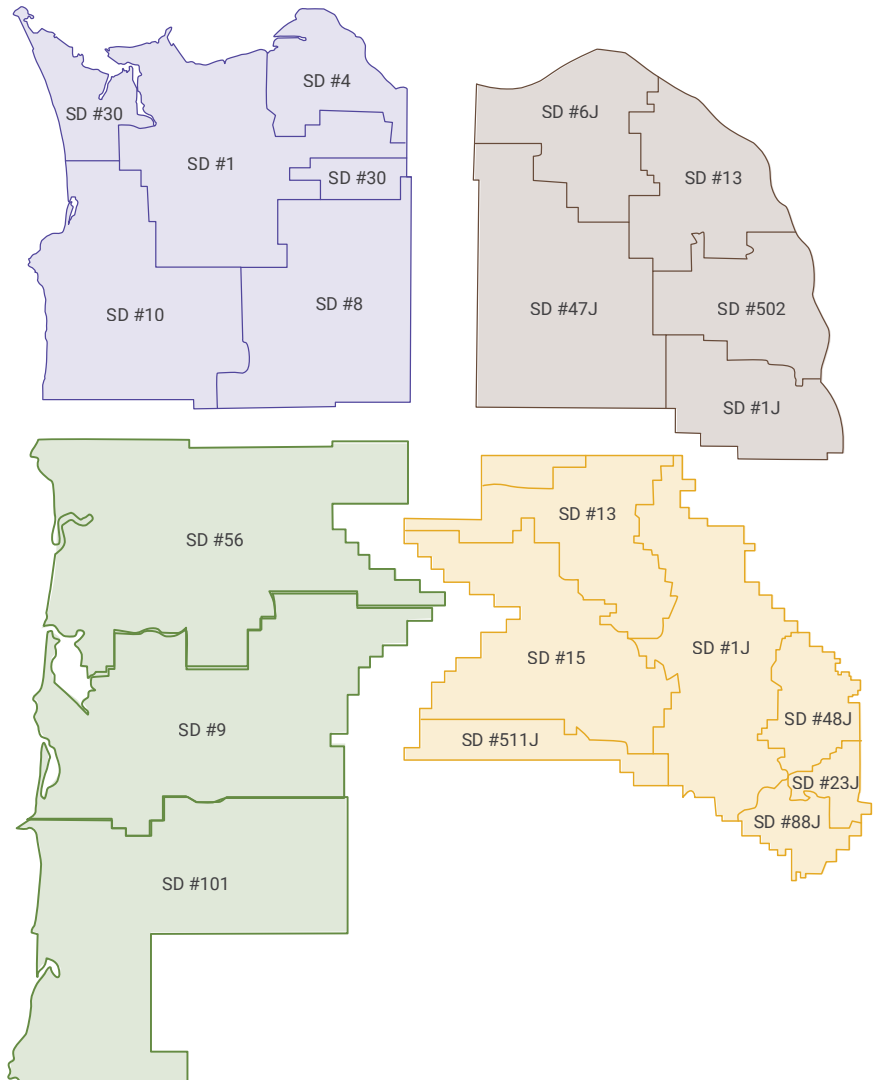
SD #6J	Clatskanie
SD #13	Rainier
SD #1J	Scappoose
SD #502	St. Helens
SD #47J	Vernonia

Tillamook County

SD #56	Neah-Kah-Nie
SD #101J	Nestucca Valley
SD #9	Tillamook

Washington County

SD #13	Banks
SD #48J	Beaverton
SD #15	Forest Grove
SD #511J	Gaston
SD #1J	Hillsboro
SD #88J	Sherwood
SD #23J	Tigard-Tualatin





Board of Directors



Becky Tymchuk, Chair
Zone 5: Beaverton (Aloha, Beaverton, Mountainside and Southridge attendance areas)



Maureen Wolf, Vice Chair
Board Member At-Large



Christine Riley
Zone 1: Gaston, Sherwood and Tigard-Tualatin



Doug Dougherty
Zone 2: Astoria, Banks, Forest Grove, Jewell, Knappa, Neah-Kah-Nie, Nestucca Valley, Seaside, Tillamook and Warrenton-Hammond



Dorian Russell
Zone 3: Hillsboro



Michelle Graham
Zone 4: Beaverton (Sunset and Westview High School attendance areas), Clatskanie, Rainier, Scappoose, St. Helens and Vernonia



Paul Jarrell
Higher Education



Mjere Simantel
Social Services



Ernest Stephens
Business position



Key Management



Dan Goldman

Superintendent
nwresd.org/about/contact-us



Catherine Dalbey

Chief Human Resources Officer
cdalbey@nwresd.k12.or.us



Megan Logan

Chief Academic Officer
mlogan@nwresd.k12.or.us



Stuart Long

Chief Information Officer
slong@nwresd.k12.or.us



Jordan Ely

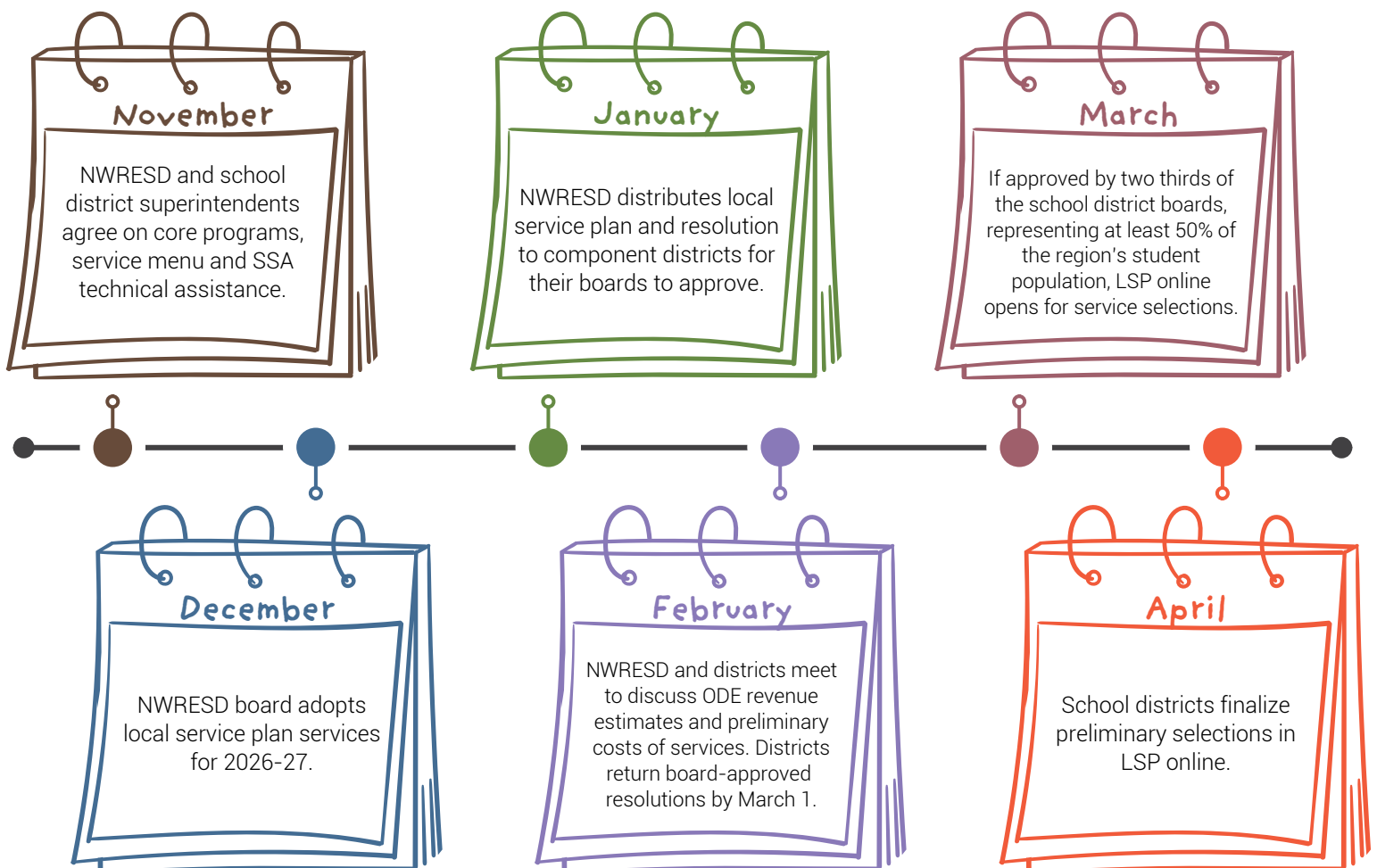
Chief Financial Officer
jely@nwresd.k12.or.us



Timeline for Plan Development

In early fall, school districts collaborate with NWRESD to design the local service plan (LSP). The LSP is then formally approved by school district superintendents,

NWRESD's board of directors, and the 20 regional school boards, according to the timeline below. Implementation begins the following school year.





How the Local Service Plan is Funded

The State School Fund (SSF) is Oregon's largest investment, equating to \$10.2 billion in the 2025-27 biennium. A share of 95.5% of the SSF goes directly to K-12 school districts and a share of 4.5% goes to education service districts for administering regional services.

The state and local revenues within the SSF formula provide more than 80% of general operating dollars to school districts and education service districts statewide. For NWRES D specifically, the SSF formula accounts for roughly 22% of our total budgeted resources.

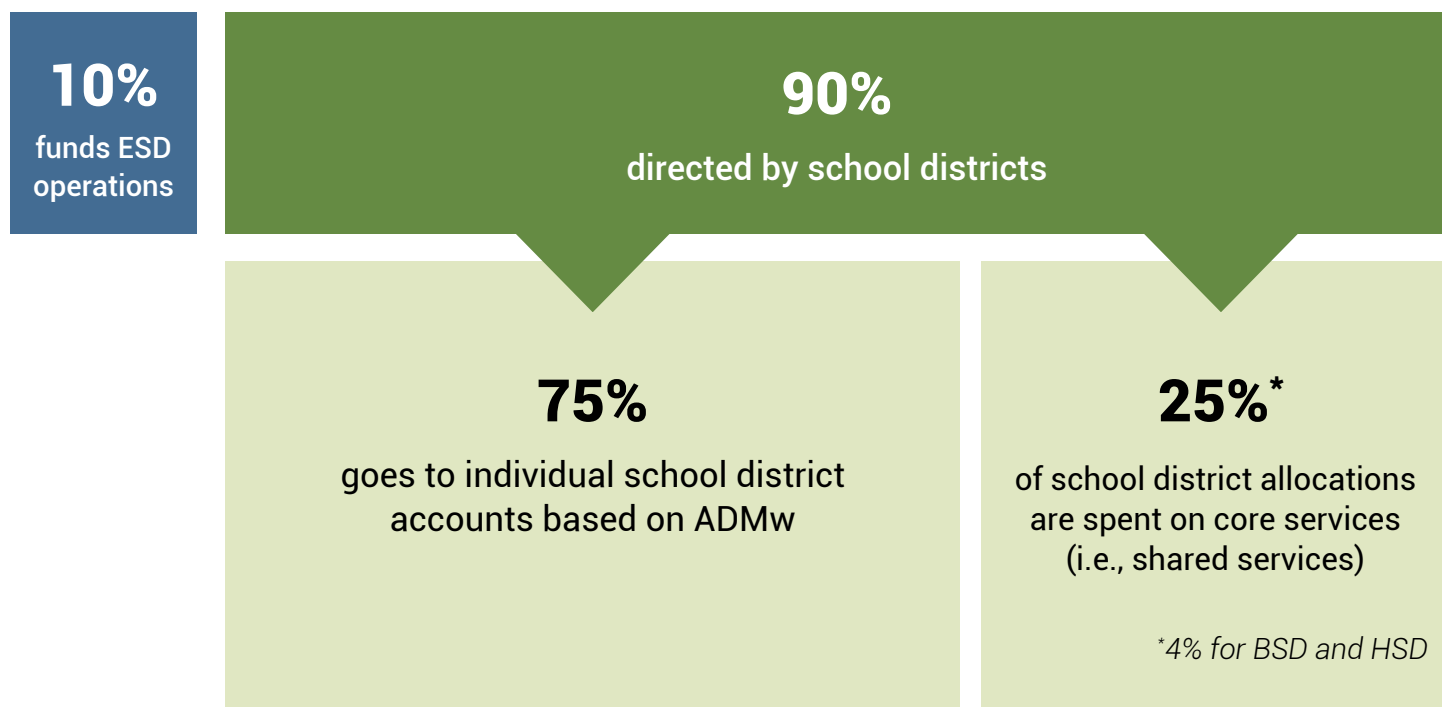
Of the SSF money we receive, 90% is allocated to districts based on weighted student population (ADMw) and 10% supports NWRES D operations.

Of the school district allocations, 75% goes directly to school district ESD accounts and 25% to core services.

School district ESD accounts can be used to purchase services through the local service plan menu. Money can also be flowed through to districts. Districts can also purchase services outside of their ESD accounts.

Core services, which are shared services available to all school districts, are first approved by component school district superintendents and then by component school district boards.

4.5% of the State School Fund ADMw **flows through ESDs.**





Two toddlers play together during the soft open and name dedication ceremony of the antkwak Early Learning Center, located in Hillsboro. The center officially opened in July 2025 and will serve an estimated 2,000 children annually through evaluations. Hundreds more will attend special education programs.

Core Services

Core services are first approved by component school district superintendents and then by component school district boards. These services are available to all school districts and represent 25% of the local service plan allocations for school districts.



9th Grade Success Network

The purpose of the 9th Grade Success Network is to increase the number of students completing 9th grade on track to graduate high school within four years. On-track students are more than 3.5 times more likely to graduate from high school in four years.

Aspiring Administrators

Our Aspiring Administrators program provides educators who are interested in moving into administrator positions with leadership training and coaching.

Behavior, Attendance, and Social Emotional Systems

Our BASES team supports districts with school culture and climate goals through a multi-tiered system of support (MTSS) lens. The team provides training and supports around positive behavioral interventions (PBIS), MTSS, and attendance best practices.

Career and College Readiness

We expand college credit and career and technical education (CTE) opportunities for all students, with a focus on students furthest from access and opportunity in our education systems. We support educators and districts through CTE guidance, program support, career readiness resources, work-based learning and career services like guest speakers, resume workshops and career fairs.

Career, College and Workforce Connection Software

We provide districts with access to SchoolLinks, which is a web-based platform that helps districts track and centralize their career and college readiness efforts. The tool includes work-based learning and industry

partner components. Optional features include social-emotional learning for elementary students, course planning and forecasting. Our team will support your district with implementation.

County Allocations

Through core, each county subset of school districts receives flexible funding to support localized regional priorities agreed upon by the school district superintendents.

Cybersecurity Services

Cybersecurity services include advising on policy and procedure, security management of technology applications, and incident response during cyber threats and attacks.

Early Literacy Supports

Our early literacy work is rooted in the science of reading, evidence-based practices and Oregon's 2023 Early Literacy Success Initiative. We offer professional development, coaching and leadership support focused on reading, teaching and data use. We also support educators to receive LETRS certification, with additional graduate credit and mentoring through Eastern Oregon's reading clinic. We view skilled reading as a civil right and design programs collaboratively to serve our region.

Emergency Closure Network

We provide districts with access to an emergency communication system (FlashAlert) for sharing emergency information, school delays and closures with their communities and the local media.



Forecast 5

We provide Forecast 5 analytics tools to help K-12 educational leaders leverage district, demographic and peer data to develop future focused strategies for managing limited resources, achieving education outcomes and improving academic ROI in today's challenging budget environment.

Grant Services

We provide grant writing and management to school districts seeking competitive grants, including state, federal and private grants. Grant writers connect with school district teams to envision, plan and convey projects and match them to grant opportunities.

Library Services (Follett Destiny Library, Resource Manager and Textbook)

We host and support Follett's Destiny Library Management System, which provides a full service suite of school library software for managing inventory, check in/out, fees, and users.

Destiny is an internet-based library, textbook and resource management system designed specifically to support K-12 education. We provide software hosting, support, student information system integration and training.

Network Services

We keep districts connected to the internet with a full suite of network management and connectivity services. We provide a sustainable model that increases speed and redundancy while maintaining low costs for school districts.

Regional Compensation Analysis

We contract with RS2 for statewide licensed salary and regional administrator comparisons.

Restraint and Seclusion

The Restraint and Seclusion Application is a custom-built records management system to track all school incidents resulting in physical restraint and/or seclusion. The Oregon Department of Education (ODE) requires a precise count and reporting of these incidents based on a number of student criteria. This application provides a secure and permanent history of these records, along with calculation and exportation of all pertinent data to ODE.

Technical Engineering Cooperative

Component districts participate in the Technology Engineering Cooperative, which ensures engineers are always available to keep essential systems running smoothly. This also connects your technology staff with ESD engineering teams for escalation of critical issues and serves as an additional resource in a time of crisis.



Students from Cascade Academy celebrated their graduation in June. This social-emotional learning school in Beaverton, which is operated by Northwest Regional Education Service District, supports about 50 middle and high school students with significant behavioral challenges. Students receive supports throughout the school day, allowing them to participate in classes and various activities.

Menu Services

Menu services are available for individual districts to purchase as needed using service credits or other funding sources.



Administration

Civil Rights and Title IX Coordination

NWRESD offers support services to ensure compliance with federal and state civil rights laws, including Title IX, which prohibits discrimination based on sex in education. Services include consultation on policies and procedures, support in responding to incidents, and assistance in building systems that promote equity, access, and accountability.

Communication Management FTE

Districts can contract for dedicated support from a communications manager in increments of 0.25 FTE. The communications manager would work in the district to advise and execute communications strategy and serve as a public information officer. They would be a member of a larger communications team at NWRESD and have direct access to coaching, mentoring and support.

Educator Pathways

Our Educator Pathways program partners with school districts to cultivate a diverse pipeline of future teachers. The program offers three distinct tracks designed for individuals from a variety of backgrounds who aspire to become licensed educators. These tracks include current classified staff, individuals from racially and culturally diverse communities and high school students interested in pursuing education careers.

Executive & Principal Coaching

Executive coaching is available on a weekly, biweekly, once every three weeks or monthly basis. These sessions will be specifically tailored to the district's and superintendent's needs. Coaching and problem-solving conversations will help participants build their leadership skills, understand the politics surrounding their position, find solutions to complex challenges and increase their confidence and improve their ability to make an educational impact.

Fiscal Services

NWRESD provides school districts with a full range of fiscal services, including accounting, budgeting, payroll processing, and financial reporting.

Human Resources Investigations

We provide impartial, thorough and timely investigation services to support our component districts in addressing workplace and school-related concerns. Each investigation is tailored to the situation to ensure that districts can respond to sensitive matters consistently, transparently and aligned with best practices.





Medicaid Reimbursements

We offer districts the opportunity to participate in school Medicaid Billing and Medicaid Administrative Claiming in Oregon.

Medicaid reimburses schools for health and related services provided to Medicaid-enrolled students. Schools bill for services provided through an individualized family service plan (IFSP) or individualized education plan (IEP).

The Medicaid administrative claiming (MAC) program reimburses districts for administrative activities associated with coordination, referral, outreach and program planning of Medicaid-covered health services.

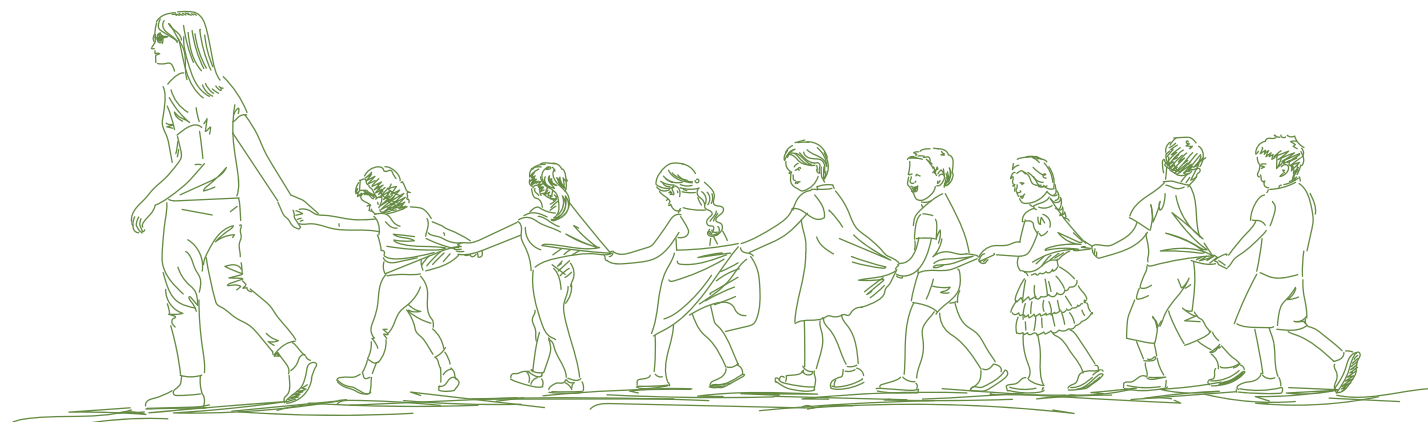
Spanish Language Interpretation and Translation

We offer translation (written) and virtual and in-person interpretation in Spanish to component districts.

Early Learning

Early Intervention/Early Childhood Special Education (EI/ECSE) Evaluations

EI/ECSE evaluations look at a child's development and whether special education supports could build skills to further a child's individual developmental progress. Children who are found to be eligible for EI/ECSE receive free services.





Instruction

Attendance

We partner with district and school attendance teams to implement effective and meaningful attendance structures. The work we do grows community awareness about the importance of regular attendance and strengthens school-to-home connections.

Cascade Education Corps

Cascade Education Corps is an experiential education program for Tigard-Tualatin School District students that aims to provide underserved youth with the knowledge, skills, resources and confidence to be lifelong environmental stewards. Students spend time in the field working on restoration projects.

Dual Credit Programming - Willamette Promise

In collaboration with local high schools and higher education institutions, students earn college credits while they are still in high school. Willamette Promise focuses on cooperation between high school teachers and college faculty to ensure students are working and learning at a college level. We specifically seek to engage historically underserved students, including students of color and first-generation college goers.

a simulated experience to practice real-world business and entrepreneurial skills at the local Finance Park.

Multi-tiered Systems of Support (MTSS) Data System Platform and Technical Support

We provide software and support for data-based screening and progress monitoring of system-wide intervention efforts, identifying individual student needs, and monitoring student progress.

Northwest Regional Outdoor Science School

Northwest Regional Outdoor Science School is an overnight experience for sixth grade students. In an immersive experience, students learn about the natural world at one of our sites in northwest Oregon. Each site's 12 to 13 staff members are supported by high school volunteers.

Oregon Virtual Education (ORVED)

Oregon Virtual Education (ORVED) offers a suite of online standards-based courses taught by Oregon-certified teachers.

Junior Achievement: Biztown and Finance Park

We offer districts the opportunity to use service credits to partner with Junior Achievement and Biztown. This partnership offers students in the region

PCC Mobile Welding Outreach and Training Center

In partnership with Union Pacific, this mobile training center brings state-of-the-art welding instruction directly to high schools across Washington and



Columbia counties. Students gain hands-on experience using professional equipment while earning microcredentials and college credit through Portland Community College (WLD190A/B). The program provides accessible, career-connected learning pathways that prepare students for high-demand jobs in the skilled trades and help address regional workforce needs.

Re-engagement Services

We employ a team of attendance advisers to work directly with school districts on returning as many students as possible to the classroom. Acting on attendance referrals from schools, our team uses a restorative and culturally responsive approach when contacting parents. Along with providing resources and identifying the root cause of absenteeism, the adviser can also provide information on Oregon laws that require students to attend school.

Our team's focus is first on re-engagement while still meeting Oregon attendance laws, as re-engagement has proven much more effective than truancy citations.



K-12 Special Education

Audiology

Our audiology program supports students from birth to age 21. A licensed audiologist provides testing, consultation and workshops. Our two audiometric booths located at the Washington Service Center are used for audiological evaluations, including initial evaluations and re-evaluations to determine eligibility for Deaf and hard-of-hearing special education services.

Augmentative and Alternative Communication and Assistive Technology

We help educational teams identify, select and acquire alternative communication and assistive technology devices and/or systems. We also provide any needed training, resources and technical assistance for using those devices and systems.

Autism Spectrum Disorder (ASD) Services

Our ASD team supports students who experience autism spectrum disorder and the educators who work with them. Services include evaluations; licensed special education teachers with ASD expertise; and coaching and consultation for teachers, specialists, parents and instructional assistants.

Behavioral Support Consultation

Evidence-based behavior support consultation targets a specific area of need and may include the development of a functional behavior assessment or

behavior support plan, classroom and program support, coaching, data analysis, multi-tiered systems of support (MTSS) consultation, and other technical assistance.

Blind Visually Impaired (BVI) Student Services

Our BVI team serves students birth to age 21 who experience low vision, are blind or are DeafBlind. Teachers of the visually impaired provide instruction, consultation, evaluation and professional development. Orientation and mobility specialists instruct students in safe, efficient and independent travel. Our brailist provides braille services to several school districts.

Cascade Academy

Cascade Academy is an educational behavioral program located in Beaverton, serving students in grades 7 through 12. Local district teams refer students when they need a small, supportive academic environment with a strong behavioral focus. A consulting school psychologist and district team work with a team of behavioral specialists and special education teachers to meet the student's academic, social, emotional and behavioral needs.

Curriculum, instruction and assessment are linked to the Oregon State Standards and the IEP process. Students and staff participate in equity training designed to increase educational opportunities and prepare students for success in their home schools and communities.



Cascade/Pacific Intensive Classroom

The classroom functions as a self-contained program within Cascade and Pacific Academy, serving students in grades 6-10 who need significant adult support to participate in an academic setting. Students have the potential to access grade-level instruction, but mental health or behavioral needs will have resulted in cumulative academic and social emotional skill deficits.

Students may be far behind their peers and unable to participate in small group instruction, even at the appropriate skill-level. Targeted skills include participating in whole group instruction, maintaining emotional regulation for extended periods of time, and using appropriate communication skills in the school setting. Students typically need one-to-one support for much of the day.

Columbia Academy K-6

Columbia Academy K-6 program annual slots can be purchased as well as daily rates pending availability. The Columbia Academy K-6 program is a special education placement targeting students in grades K-6 who need intensive instruction regarding emotion regulation skills in order to access their academics. Students are placed into one of three classrooms based on grade level and programming needs. Currently, two classrooms serve elementary-age students.

Program staff are highly trained to provide behavioral support, collaboration and unique supervision needed for students to help learn safe strategies to regulate behavior and or emotions. Explicit instruction and practice of these skills helps ready students to return

to their home school district. Students will access core academic instruction at their appropriate grade level and receive needed specially designed instruction to work toward grade-level content standards.

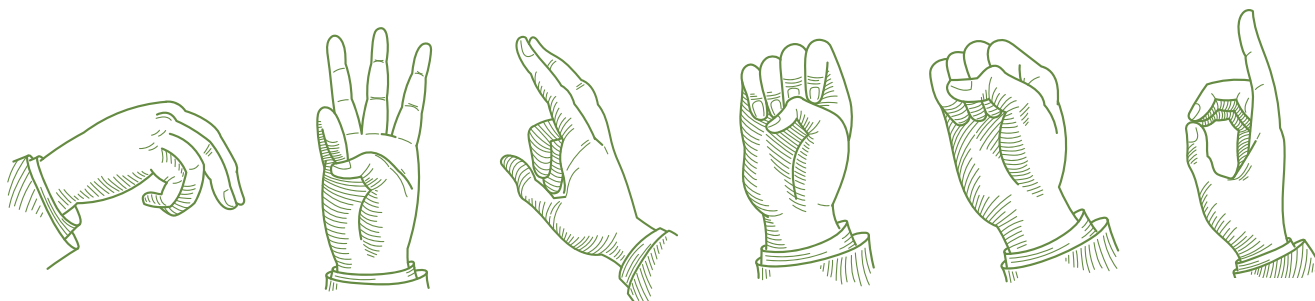
Students and staff participate in equity training designed to increase educational opportunities and prepare students for success in their home schools and communities.

Deaf and Hard-of-Hearing Classroom

Our Deaf and hard-of-hearing classroom hosts kindergarten to sixth grade students. Learning alongside peers with similar communication modalities facilitates linguistic and social emotional development. Some children in the program use sign language as their primary mode of communication and others choose a more auditory path. Students communicate with their teacher through their primary modality and attend school with those who share their culture and communication system.

Deaf and Hard-of-Hearing Services

This program is part of Oregon's Regional Inclusive Services. Itinerant teachers serve students who are eligible for special education or Section 504 services. Services include consultation to educators, professional learning, and instruction — which typically includes reading, written language, self-advocacy and other areas most impacted by hearing loss. The program also provides staffing services, including American Sign Language (ASL) interpreter services, ASL teacher, and ASL assistants who work under the direction of a licensed classroom teacher.





FM Rentals

We rent FM systems to districts for use with students who experience hearing loss and need technology to support access to their instructional program.

Learning Specialists

Learning specialists hold an Oregon license with an endorsement in the area of their assignment. Instruction will include the development of academic, social, behavioral, and workforce skills.

Additional job responsibilities include case management, IEP development, assessment and data collection, scheduling meetings, parent/guardian communication, management of support staff, and collaboration with general education teachers, youth transition program (YTP) teachers, social service and business partners.

The teacher works with other instructional providers to ensure equitable access to teaching and learning.

Levi Anderson Learning Center

Levi Anderson Learning Center, located at St. Mary's Home for Boys, is a day treatment program serving boys in grades 6-12. Curriculum, instruction and assessment are linked to the Oregon State Standards. Students receive mental health and behavioral supports individually and in small groups throughout the school day.

Students and staff participate in equity training designed to increase educational opportunities and prepare students for success in their home schools and communities. The focus of the program builds on social emotional learning throughout the school day.

Classroom staff are trained in trauma-informed care and collaborative problem solving and coordinate with the St. Mary's behavioral support team.

Meadowlark Academy K-5 (Columbia County)

Meadowlark Academy K-5 program annual slots can be purchased as well as daily rates pending availability. The Meadowlark program is a special education placement targeting students in grades K-5 who need intensive instruction regarding emotion regulation skills in order to access their academics. Students are placed into classrooms based on grade level and programming needs.

Program staff are highly trained to provide behavioral support, collaboration and unique supervision needed for students to help learn safe strategies to regulate behavior and or emotions. Explicit instruction and practice of these skills helps ready students to return to their home school district. Students will access core academic instruction at their appropriate grade level and receive needed specially designed instruction to work toward grade-level content standards.

Students and staff participate in equity training designed to increase educational opportunities and prepare students for success in their home schools and communities.

Nursing Services

Our nursing team provides direct one-to-one care to students in the classroom, site-based nursing care or general nursing services in school districts. Nurses also train and consult with educators. Districts can contract with us to provide nursing services to students based on a physician's order or as designated in the individual IFSP/IEP.



Occupational Therapy (OT) Services

Our occupational therapy team assesses fine motor, visual motor, visual perceptual, motor coordination and sensory processing skills. Practitioners — occupational therapists and occupational therapy assistants — provide strategies and resources to promote independence, participation, strength, well-being and safety in the educational setting.

They make adaptations to tasks and tools, model, consult, coach and teach skills. They may also facilitate assistive technology and equipment usage to remove barriers and support student success in academics, self-care and social participation.

Pacific Academy

Pacific Academy is an educational program with mental health supports located in Beaverton. It serves students grades 6-12. Local district teams refer students when they need a small, supportive academic environment with a mental health focus.

A consulting school psychologist and district team work with mental health staff and special education teachers to meet the student's academic, social, emotional and behavioral needs. Curriculum, instruction and assessment are linked to the Oregon State Standards and the IEP process. Students and staff participate in equity training designed to increase educational opportunities and prepare students for success in their home schools and communities.

Physical Therapy (PT) Services

Our team provides school-age physical therapy services to address the gross motor needs of students in area school districts. Physical therapists evaluate the functional skills of students with disabilities to identify barriers to physically access and participate in school. Physical therapists consult and collaborate with the student's educational team. Physical therapists and physical therapist assistants

teach strategies to classroom staff that support safe access and participation for the student in all settings throughout each school day.

Pre-Employment Transition Services (Pre-ETS, Formerly YTP)

Our Youth Transition Program is a collaboration between school districts and the Office of Vocational Rehabilitation to prepare students with disabilities for employment or career-related postsecondary education or training through the provision of a comprehensive array of pre-employment transition services and supports.

Clatsop County school districts match grant funds to sustain the work of two transition specialists funded with this grant.

School Psychology Services

Our psychologists provide expertise in mental health, learning and behavior to schools and their students. They support evaluations for special education eligibility, Functional Behavioral Assessments (FBA), and school law and individualized education plan (IEP) procedures. They help improve academic achievement, promote positive behavioral and mental health, establish safe school climates and strengthen family partnerships.

Speech-Language Pathology Services

Our speech-language pathology team partners with school districts and educational teams to promote language literacy, social learning and engagement. Students receive culturally and linguistically sustaining services.

Our SLPs support students who exhibit the full range of communication needs, including language, literacy, articulation (speech sound disorders), fluency, voice/resonance and swallowing.



Technology

Attendance Reconnection System

Developed by the Cascade Technology Alliance, this web-based application assists schools in processing and tracking attendance issues. The software provides recording and monitoring for all required forms. It incorporates the steps necessary for districts to return as many students as possible to the classroom and contributes significantly to case resolution rates and is available to school districts, ESDs, and police departments across Oregon.

Criminal Background Check System

We contract with Criminal Information Services, Inc. (CRIS) to provide customized, easy-to-use, online and offline criminal background information at a reduced rate. With a per use charge, CRIS allows us to conduct background checks via web interface on volunteers, new hires, coaches, substitutes, teachers and staff. The CRIS database includes access to a nationwide database of over 1,000 registries and 300 million records on criminal activities.

District Technology Purchasing

We provide purchasing assistance to component districts. Our team of trained technicians are available to purchase needed software and hardware from multiple retailers streamlining the process for clients.



Help Desk

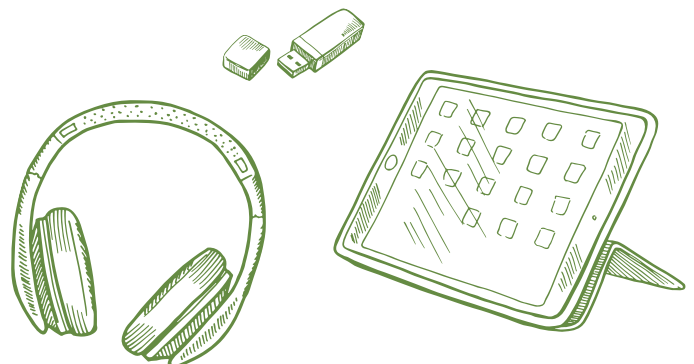
We provide dedicated staffing at the request of districts when they have specific support needs. Our direct site support, technology planning and purchasing, engineering, and remote help desk services are tailored to each district's needs.

Learning360 Streaming Video

We contract with Infobase to provide Learn360, a Technology Services streaming digital content service for K–12 education. Teachers, students, and parents can access more than 130,000 multimedia resources on any internet-enabled device, anytime, anywhere. Does not include: Classroom Video on Demand.

Oregon Data Suite

We contract with Willamette ESD to offer the Oregon Data Suite. The suite is a collection of data services that provide educators with an accessible tool to monitor and analyze key indicators of student success. It uses a visual dashboard to transform district, building, and student data into usable information.





Public School Works

We contract with Works International to provide Public School Works compliance training to local school districts and public entities.

Public School Works is designed to ensure all employees have completed annual training requirements. The widespread use allows districts to pay a nominal fee per employee each year. The software generates email notification to employees and uses a paperless management tracking feature.

School ERP Pro (formerly Infinite Visions)

We contract with Tyler Technologies to host School ERP Pro, a comprehensive enterprise financial and human resources management solution specifically engineered for the K-12 business environment.

Modules include: general ledger, budget, accounts receivable, accounts payable, payroll, human resources, grant tracking and inventory.

The employee access web portal allows employees, administrators, and fiscal staff access to work from anywhere. Direct support from Tyler Technologies is included.

Synergy Student Information System

We offer the Synergy Student Information System (SIS), a comprehensive student information system providing single entry for student demographics, scheduling, attendance, grading, transcripts, fees, immunization, and discipline tracking.

Additional Synergy applications and services are also supported, including integration with Zoom and One Roster, online registration, assessment, Inspect Item Bank, GradeCam, MTSS, analytics, SchoolPlay, special education, ParentVue and StudentVue.

Technical Engineering Cooperative

Component districts participate in the Technology Engineering Cooperative, which ensures engineers are always available to keep essential systems running smoothly. This also connects your technology staff with ESD engineering teams for escalation of critical issues and serves as an additional resource in a time of crisis.



A student in the Jewell School District proudly displays the star performer medal she received after graduating from third grade. In one school year, Jewell School District increased regular attendance by 25 percentage points by putting research-based systems and structures into place to better support students and families.

Student Success Act/Integrated Guidance Technical Assistance Plan

The Student Success Act plan, as required by HB 3427 Section 25, defines our role to support districts make progress toward the goals of the Student Success Act.



9th Grade Success Network

The purpose of the 9th Grade Success Network is to increase the number of students completing 9th grade on track to graduate high school within four years. On-track students are more than 3.5 times more likely to graduate from high school in four years.

Behavior, Attendance, and Social Emotional Supports (BASES)

Our BASES team supports districts with school culture and climate goals through a multi-tiered system of support (MTSS) lens. The team provides attendance and school safety and prevention services, social-emotional learning support and MTSS coaching for districts and/or schools.

Communications Technical Assistance

Our communications team offers technical assistance, networking and support to educational staff in the region who have a community relations role.

We are available to assist with:

- crisis response
- Student Investment Account community relations plans
- translation and interpretation, including training on how to work with an interpreter
- graphic design
- messaging
- convening and networking around regionally relevant topics

Community Engagement and Family Partnerships Technical Assistance

Oregon districts feature communities, families and students who have been historically and contemporarily underserved, underrepresented, excluded or marginalized from the educational system. When we support your district through

training in strengthening family partnerships, advocacy, organizing, and increasing engagement with the community, you will see focal groups that will feel less like an audience for your decisions and more involved as key partners.

Structures of accountability and feedback will bring a sense of transparency and authenticity to district planning. Specific services include access to community surveys and ThoughtExchange and training on how to facilitate story circles and empathy interviews.

Comprehensive Support and Improvement/Targeted Support and Improvement (CSI/TSI)

We serve as a vital link between the Oregon Department of Education and our component districts, helping schools identified for Comprehensive or Targeted Support and Improvement (CSI/TSI) develop goals and strategies to improve student outcomes. We support districts through technical assistance, planning facilitation, and coordination with state initiatives like the Student Investment Account. Our role ensures that school improvement efforts are strategic, equity-driven and aligned with their Integrated Programs plan.

Early Literacy Supports

Our early literacy work is rooted in the science of reading, evidence-based practices and Oregon's 2023 Early Literacy Success Initiative. We offer professional development, coaching and leadership support focused on reading, teaching and data use. We view skilled reading as a civil right and design programs collaboratively to serve our region.



Instructional Rounds

Instructional Rounds is run through our Instructional Coaching Network (ICN). Instructional Rounds is a collaborative, evidence-based process in which educators observe learning across classrooms to identify patterns of practice and determine high-leverage next steps. This disciplined inquiry strengthens instructional systems and supports building more equitable learning experiences for all students and improving student outcomes. The foundation of Instructional Rounds is that it is experience-based professional learning where teachers learn with and from each other, a more powerful and effective method of improving teacher practice in order to move student outcomes.

Small/Rural Grant Support Technical Assistance

Our instructional services team provides grant writing services to small and rural school districts in order to fulfill the requirements of Integrated Guidance.

Workforce Development and Career and College Readiness

We provide educators with professional learning communities, career and technical education (CTE) teacher mentoring, curriculum (e.g. Oregon Employability Skills), resources, summer externships, and grants. Student support includes career fairs, career kits, internships and experiential events. We also provide districts with access to SchoolLinks, which is a web-based platform that helps districts track and centralize their career and college readiness efforts.



Appendix



A child who receives Early Childhood Special Education Services plays with blocks. After receiving services from our specialists, she was able to say mama for the very first time.



Resolution Authorizing NWRESD Local Service Plan for 2026-27

BE IT RESOLVED by the Board of Directors of Beaverton School District in Washington County, Oregon, that for the nature and extent of Core Services, Service Credits, and the Student Success Act technical assistance plan described in the proposed local service plan and in compliance with the provisions of ORS 334.175, the school board of said school district hereby approves the Northwest Regional Education Service District Local Service Plan for the 2026-27 school year.

ADOPTED this _____ day of _____ 2026.

ATTEST:

Board Chair

Superintendent

Please email or mail the signed document by March 1, 2026 to:

Valerie White vwhite@nwresd.k12.or.us
Northwest Regional Education Service District
5825 NE Ray Circle Hillsboro, Oregon, 97124



A preschooler from Columbia County plays on the playground during an Early Childhood Special Education class during the summer. Last year, 2,800 students received Early Intervention and Early Childhood Special Education services from our agency.

Grant Funded & Value-Add Services

Through support from federal, state and private grants, NWRES D provides certain services at no cost to school districts.



Autism Spectrum Disorder (ASD) Services

Our ASD team supports students who experience autism spectrum disorder and the educators who work with them. Services include evaluations; licensed special education teachers with ASD expertise; and coaching and consultation for teachers, specialists, parents and instructional assistants.

Blind Visually Impaired (BVI) Student Services

Our BVI team serves students birth to age 21 who experience low vision, are blind or are DeafBlind. Teachers of the visually impaired provide instruction, consultation, evaluation and professional development. Orientation and mobility specialists instruct students in safe, efficient and independent travel. Our brailist provides braille services to several school districts.

Blind Visually Impaired Student Fund

This fund was established in 2009 by the Oregon State Legislature to help students transition to educational programs in their neighborhood schools when Oregon's School for the Blind closed. The fund's purpose has since expanded to enhance learning for all students in the state who experience blindness or visual impairment.

Career and Technical Education Washington County Revitalization

This regional initiative expands access to high-quality career and technical education in aerospace, diesel technology, and bioscience. By sharing program slots across districts, students gain college credit, industry credentials, and real-world experience in high-demand fields. The project strengthens equity and collaboration across Washington County, ensuring all students can access pathways to meaningful careers.

Cascade Alliance for Equity (Regional Educator Network)

The Regional Educator Network, part of the statewide Educator Advancement Council, is dedicated to strengthening the teaching profession in Oregon. Our regional work is guided by local educator input and data. Our Cascade Alliance for Equity offers twice-yearly summits, county belonging collaboratives and employee affinity groups to all districts in our region. Summits reverse traditional roles and place students as the experts and educators as the learners in our shared mission to create more equitable and inclusive learning environments.

Child Care Resource and Referral (CCR&R)

Northwest CCR&R supports child care providers in Clatsop, Columbia and Tillamook counties through training, career advancement opportunities, licensing and other forms of support. The team also advances child care sector planning for the region.

Courier

NWRESD's courier delivers educational materials, technology and other materials between all school districts and NWRESD sites.

Deaf and Hard-of-Hearing Services

This program is part of Oregon's Regional Inclusive Services. Itinerant teachers serve students who are eligible for special education or Section 504 services. Services include consultation to educators, professional learning, and instruction — which typically includes reading, written language, self-advocacy and other areas most impacted by hearing loss. The program also provides staffing services, including American Sign Language (ASL) interpreter services, ASL teacher, and ASL assistants who work under the direction of a licensed classroom teacher.



DeafBlind Services

Through our DeafBlind services as part of Oregon's Regional Inclusive Services, we provide materials and tools that facilitate learning, ensuring that content is accessible and engaging for DeafBlind students. Teachers of the Visually Impaired and Teachers of the Deaf and Hard of Hearing can provide consultation and help support specialized training to educational teams. Through State and National DeafBlind projects, we connect students and families to programs and initiatives that offer additional support and resources.

Early Childhood Special Education (ECSE)

Early Childhood Special Education (ECSE) offers special education services to children found eligible through our screening and evaluations process. Services include specially designed instruction and related services such as physical, occupational, or speech and language therapy.

Most of these services are offered in partnership with school districts, community and Head Start preschools, and other child care facilities. When needed, services are offered in specialized settings.

Early Intervention (EI)

Our Early Intervention (EI) program supports eligible children from birth to age 3 years. The program helps families develop the skills they need to help their children learn and grow. Services are delivered through a parent coaching model at home or in other care-giving settings.

Early Intervention/Early Childhood Special Education (EI/ECSE) Intake and Screening

Screenings are completed at no cost for children from birth to age five. The EI/ECSE intake and screening process determines if a child needs to be evaluated to determine EI/ECSE eligibility.

Evaluations, which are available as a contracted service, look at a child's development and whether special education supports could build skills to further a child's individual developmental progress.

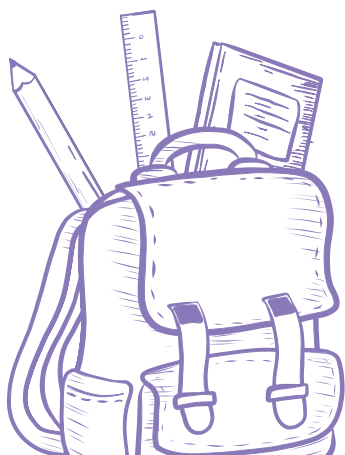
Early Literacy Supports (Regional Educator Network)

The Regional Educator Network, part of the statewide Educator Advancement Council, is dedicated to strengthening the teaching profession in Oregon. Our regional work is guided by local educator input and data. The Regional Educator Network provides educators with access to LETRS (Language Essentials for Teachers of Reading and Spelling) training with an option to participate in graduate-level courses on the science of reading. The grant also reimburses districts for substitute and mileage costs.

Early Learning Hub (Clatsop, Columbia and Tillamook Counties)

The Northwest Early Learning Hub convenes cross-sector partners — educators, health care providers, community advocates, businesses and others — to create local systems that are aligned, coordinated and family-centered.

Families in Clatsop, Columbia and Tillamook counties receive support to become healthy, stable and attached and their children receive the early learning experiences they need to thrive.





English Language Learner Consortium (Title III)

This consortium ensures English learners, including immigrant children and youth, attain English proficiency and achieve academically in English and all other subjects. We assist teachers, including preschool teachers, principals and other school leaders in establishing and sustaining effective language education programs so that students are ready to attend classes in English.

Equity and Family Partnerships (Regional Educator Network)

We work to ensure every student can achieve their full potential by fostering inclusive, antiracist school environments. Our efforts include promoting culturally sustaining teaching, diversifying the educator workforce, removing barriers for marginalized groups, and supporting educators of color through community and advocacy.

Health Education Training Application

This health-related training database provides on-demand training on topics like CPR, medication administration, anaphylaxis and seizure protocols to every educator in our region. This program enables districts to create training records for every educator and ensures educators are up-to-date on their training requirements.

Instructional Coaching Network (Regional Educator Network)

The Regional Educator Network, part of the statewide Educator Advancement Council, is dedicated to strengthening the teaching profession in Oregon. Our regional work is guided by local educator input and data. Our Instructional Coaching Network provides customized coaching, professional learning and

support with instructional rounds. Our team tailors these services and supports to ensure they align with a school's and/or district's improvement goals.

Migrant Education Program (MEP)

MEP ensures children whose families migrate for work in the agricultural, fishing, timber and other similar industries can fully benefit from public education.

The program focuses on:

- family partnership
- kindergarten preparation
- student empowerment
- high school completion

Northwest Early Learning and Parenting Hub (Clatsop, Columbia and Tillamook Counties)

The Northwest Early Learning Hub convenes cross-sector partners — educators, health care providers, community advocates, businesses and others — to create local systems that are aligned, coordinated and family-centered.

Families in Clatsop, Columbia and Tillamook counties receive support to become healthy, stable and attached and their children receive the early learning experiences they need to thrive. Our regional parenting education hub ensures parents have access to parenting education programs, educational workshops and family engagement opportunities.

Oregon Math Project (STEM Hub)

The Oregon Math Project, facilitated by the Northwest STEM Hub, helps promote the Oregon Department of Education's 2+1 Math Pathways pilots, establish professional learning communities focused on equitable math practices, and offer professional development on K-12 Data Reasoning standards.



Oregon Response to Instruction & Intervention (ORTII)

The purpose of Oregon Response to Instruction and Intervention is to provide technical assistance to Oregon school districts implementing response to intervention systems that provide targeted, effective instruction to meet the needs of all students and provide the framework to identify students with specific learning disabilities. The focus of the project is on literacy, early intervention, and the use of evidence-based practices. ORTII has been supported by the Oregon Department of Education since 2006.

Pre-Employment Transition Services (Pre-ETS, Formerly YTP)

Our Youth Transition Program is a collaboration between school districts and the Office of Vocational Rehabilitation to prepare students with disabilities for employment or career-related postsecondary education or training through the provision of a comprehensive array of pre-employment transition services and supports.

Clatsop County school districts match grant funds to sustain the work of two transition specialists funded with this grant.

Regional Equipment Center

The Regional Equipment Center provides adaptive equipment and assistive technology devices to special education students experiencing orthopedic impairment, who are blind or visually impaired or Deaf or hard-of-hearing. Equipment center staff consult with therapists to determine students' equipment needs.

Regional Mentoring (Regional Educator Network)

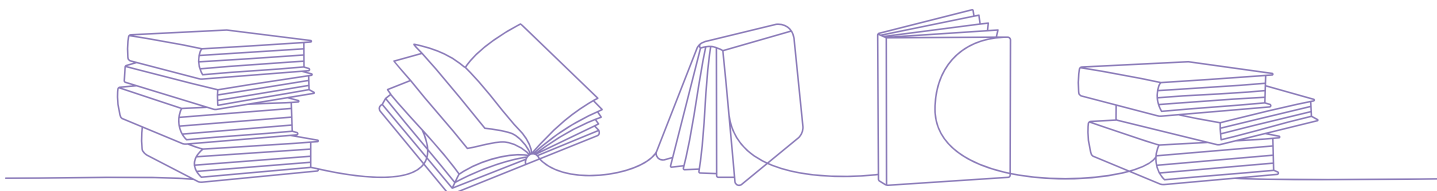
The Regional Educator Network, part of the statewide Educator Advancement Council, is dedicated to strengthening the teaching profession in Oregon. Our regional work is guided by local educator input and data. Our regional mentoring program provides ongoing, individualized support for mentors and novice educators through professional learning opportunities, in-field coaching and cross-district connections. Differentiated strands of support include licensed educators, career and technical educators and classified staff.

Regional Technical Assistance Provider (RTAP)

Through a collaboration with the Oregon Department of Education's Office of Enhancing Student Opportunities and the Oregon Association of Education Service Districts, we provide no-cost regional professional development and targeted technical assistance through a regional technical assistance provider. This provider delivers in-person and virtual support to special education teachers, case managers and directors, which ensures consistent high-quality services for students across Oregon. This support is delivered as part of the state's general supervision requirements.

School Safety and Prevention System

The School Safety and Prevention System was established through Section 36 of the Student Success Act and Senate Bill 52 (Adi's Act). This new statewide system provides an integrative approach for aligning





school safety, public education and health systems that is centered in equity, racial equity and access to mental health services.

The program provides technical expertise, consultation, training and system development in responding to threats of violence, sexual incidents, suicidal ideation, bias incidents, and tragedies in the school community.

The program's multi-tiered system of support also includes universal prevention programs aimed at promoting mental health and belonging in schools and preventing bullying, harassment and intimidation.

Spot Vision Screener

The spot vision screener is a device that quickly identifies potential vision problems and determines whether a child needs a more comprehensive eye assessment. This equipment is available for check-out in our professional library.

STEM (Science, Technology, Engineering, Math) Hub

The Northwest STEM Hub serves 15 school districts and their surrounding communities throughout Clatsop, Columbia, Tillamook and rural Washington counties. The team empowers students by removing barriers to STEM education by offering integrated learning experiences for students and families, providing professional development and resources to rural teachers, and partnering with local industry, community organizations, and post-secondary institutions to promote career-connected learning opportunities.

Traumatic Brain Injury (TBI) Services

Our TBI liaison connects educators, families and students to resources both within our region and throughout the state. The TBI liaison also works closely with members of the statewide TBI team, which includes professionals throughout our region who have volunteered to complete professional learning activities needed to provide consultation within their school district.